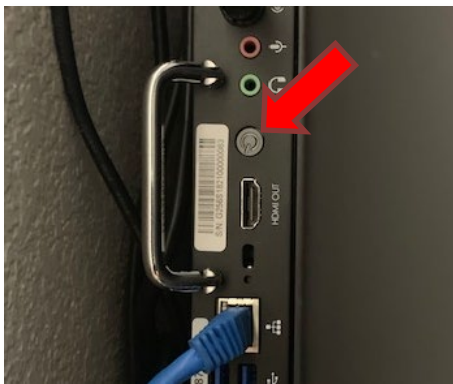


Powering Up Promethean Panel and OPS Box

Power on the Promethean Panel and the OPS Box then select the proper input source.



Press the **power** button on the front of the Promethean Panel.



Press **power** on OPS box (located on upper left side of panel).



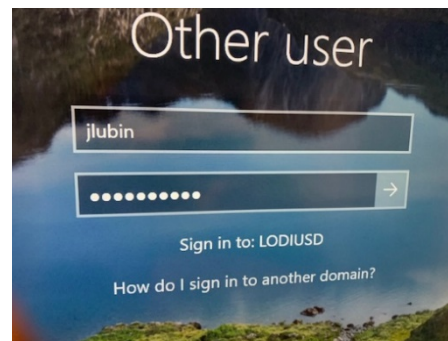
Click **source** button on front of panel. OPS box must be on to appear in sources.

Logging in to OPS Box

Log in to the OPS box similarly to any Windows device.



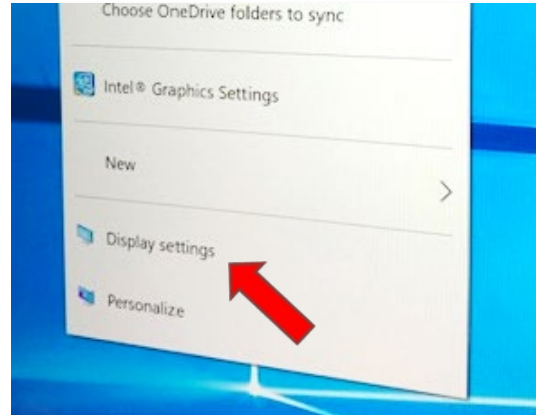
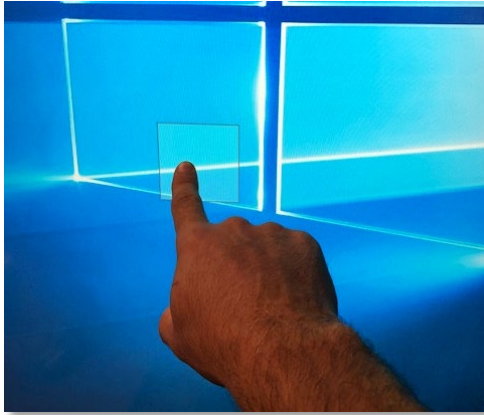
Slide up on lock screen to show login screen.



Log in on OPS box using Citrix credentials.

Changing Screen Resolution and Icon Size

If icons on desktop are too small, you can change resolution settings and zoom.



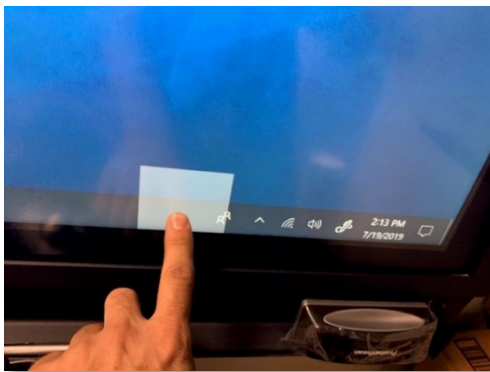
On the desktop, press one finger on panel until a box appears. Click on **Display Settings**.

Under Scale and layout:

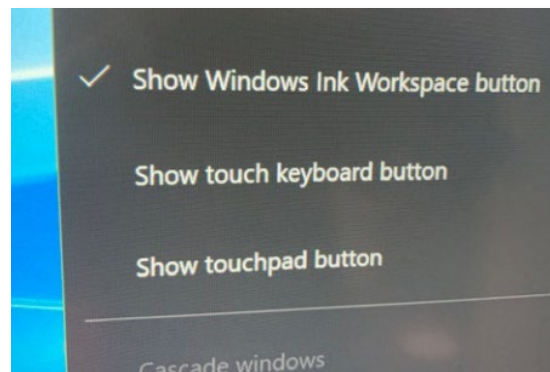
- Change the size of text, apps, and other items to **125%**
- Change resolution to **1920 x 1080**.

Adding Touch Keyboard to Taskbar

A touch keyboard button may be added to the taskbar for convenience.



Right click (hold finger) on the taskbar.



Select **Show touch keyboard button**.

Altering Sound Settings

Volume and other sound settings can be modified in the taskbar by clicking the speaker icon.



Press speaker icon and select AP7_Titanium.