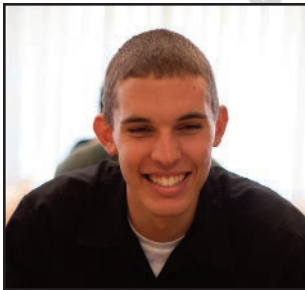


legacy giving ENDOWMENTS



Endowments are the financial foundation of a school.

Rather than used for immediate needs, endowed funds are invested. The earnings on these investments then provide a stable, ongoing source of funds for scholarships, operations, and other areas of campus life where there is a need.

The goal of an endowment is to use enough earnings to accomplish the purpose for which the endowment was created, while retaining a portion to allow for growth and future use.

By creating an endowment at De La Salle High School, you provide a fundamental, ongoing gift that will touch the lives of our students for years to come. Read further to learn how you can help De La Salle continue its mission of

*“Educating Men of Faith, Integrity,
and Scholarship.”*



Whatever your interest, there is an area on campus that can benefit through an endowment. Here are some brief explanations about various types of endowments:

GENERAL

Earnings from a general endowment of the school help to keep tuition costs down, allowing De La Salle to serve its mission to seek and embrace students with varied academic needs and diverse social, cultural and economic backgrounds.

FINANCIAL AID

Financial aid endowments enable families and students in need to pursue their dream of a De La Salle education. Our financial aid recipients have traditionally come from a wide variety of families who demonstrate financial need. In addition to serving these families, De La Salle has created a scholarship program for students from the very poorest families in our community and has made it a top priority.

OPERATIONS, PROGRAMS, AND EXCELLENCE

Operations, programs, and excellence endowments enhance the school's ability to provide top quality, state-of-the-art educational opportunities for our young men. These endowments may be established to benefit any operational or education area on campus.

ATHLETICS

Athletic endowments can help underwrite the costs of operating the entire program or a specific sport.

ACADEMIC DEPARTMENT

The endowing of an academic department at De La Salle provides the resources necessary for the department to meet its standards of academic excellence. It does so by supplementing the departmental budget.

FACULTY

Faculty endowments allow De La Salle to attract and retain faculty members who are passionate about Catholic education and excel in their areas of speciality while impacting the students they teach. Specifically, these endowments provide funds to defray or supplement our faculty's salaries or provide educational opportunities to enhance a faculty member's teaching.

FACILITIES AND EQUIPMENT

As facilities and equipment age, they need repairs and replacement. A facilities and equipment endowment can help meet or offset costs associated with such repairs or replacement. These endowments help keep De La Salle's campus running smoothly.



De La Salle High School continues to flourish due to our many valued partnerships created by individuals, families, corporations and class years as a deep commitment to furthering our educational mission. Some of these partnerships evolved from the passing of an alumnus or other loved one, as a legacy and promise to future generations that De La Salle will remain prepared to love, guide, and instruct students in the Lasallian traditions.

Named funds, are established with a minimum investment of \$50,000 and provide a lasting symbol of the bond between De La Salle High School and those who are permanently honored. De La Salle is proud to uphold the legacy of the following individuals and families.

Alumni Endowment for Financial Aid

Established in 2003 by the De La Salle Alumni Association, this fund gives preference to sons of De La Salle alumni in need of tuition assistance. In the event no alumni families apply for such support in any given year, a De La Salle student in need of tuition assistance shall be named.

Bianchina Jr. Family Fund

This fund provides support for the De La Salle High School Learning Center to supplement current operational needs including retaining additional academic resources and instructors.

Joan M. Buhlman Scholarship Fund

Established in 2018, this fund provides support to students enrolled who demonstrate a passion for faith, scholarship, and integrity through leadership in the classroom, co-curricular activities, and their community. Additionally, preference is given to students who are: 1). from a single parent household; 2). has played basketball at De La Salle or with another organization prior to De La Salle. In the event that a student with both of the criteria above cannot be identified, a student in need and in good standing at De La Salle High School will be selected.

Nick Casci Endowed Memorial Scholarship Award

Established in 2002 in honor of former De La Salle faculty member Nick Casci, this fund supports the Nick Casci Endowed Memorial Scholarship Award presented annually to a graduating senior who has demonstrated an interest in the performing arts and will be attending college.

De La Salle Brothers' Community Endowment for Financial Aid

Established by the Christian Brothers' community at De La Salle High School, this fund offers financial assistance to students who otherwise would be unable to receive a Lasallian education.



De La Salle Faculty/Staff Endowment Fund

Established by the faculty and staff at De La Salle High School, this fund offers financial assistance to students who otherwise would be unable to receive a Lasallian education.

Josh and Chelsea Freeman Family Fund

Established in 2015, the Josh and Chelsea Freeman Family Fund provides support to students enrolled at De La Salle High School who are classified as Bishop Cummins Scholars. Preference will be given to a Bishop Cummins Scholar participating in football and/or track and field, but if a student athlete cannot be identified, a Bishop Cummins Scholar in good standing may be named.

The Silvio and Mary Garaventa Family Financial Aid Endowment Fund

Established in 2008 to the Garaventa Family's long standing commitment to Lasallian education at De La Salle High School, this fund will provide assistance to a student who demonstrates a passion for faith, scholarship, and integrity through leadership in the classroom, co-curricular activities and their community.

Carl E. and Ann K. Hanson Endowed Memorial Fund for Financial Aid

Named in memory of Carl E. and Ann K. Hanson, grandparents of a De La Salle alumnus, this fund provides two scholarships: 1). to a De La Salle student from a single parent household; and 2). to a student with a special interest and aptitude in math and/or physical sciences.

The Happy Family Fund

This fund provides support to students enrolled at De La Salle High School who are graduates of the De La Salle Academy, Inc. and demonstrate a passion for faith, integrity, and scholarship through leadership in the classroom, co-curricular activities, and their community.

The Maurice Jones Memorial Scholarship Fund

Established in 2014, this fund is used to support a deserving young man from the Antioch, California community, whom attended public middle school and is from a single parent household.

Terrance Kelly '04 Endowed Memorial Fund for Financial Aid

In honor of his accomplishments both in the classroom and on the football field, this fund was established by Terrance's friends and family to help a promising student from an underserved area reach his fullest potential. Special consideration will be given to a student exhibiting Terrance's special character and qualities: a leader among his peers, a solid student, and an inspiration to others.

Nathan Kirkham '00 Endowed Memorial Fund for Financial Aid

This fund provides financial assistance to a student from a single-parent family as a lasting tribute to Nate Kirkham '00.



Luciano-Medeiros Family Endowment for Financial Aid

Named in honor of Thelma and Michael Luciano, grandparents of Mike Medeiros '05 and Matt Medeiros '15, this fund offers financial assistance to a student demonstrating leadership qualities through participation in academics, athletics, and church-related activities.

The Maloney Family Scholarship Fund

This fund provides support to students enrolled at De La Salle High school who are classified at Bishop Cummins Scholars who demonstrate a passion for faith, scholarship and integrity, who demonstrate academic rigor and excellence as well as leadership among his peers; and has well-rounded engagement in the co-curricular life of the school.

The Marchetti Family Lasallian Educator Fellowship Award

Established in 2015, the Marchetti Family Lasallian Educator Fellowship Award shall be used to provide support for an extraordinary educator at De La Salle High School who wishes to further his or her ongoing professional development for the awarded school year. Preference shall be given to educators who demonstrate a desire to further his or her ongoing development, teaches a minimum of four periods for the academic school year, while also involved in extra-curricular activities such as athletics, arts, or club moderation. These characteristics are identified because of their willingness to dedicate themselves to furthering their own education in service to the Mission and benefit of the students at De La Salle.

Bill Mercer Endowment for Financial Aid

Named in honor of alumni parent Bill Mercer (father of Eric '84, Brian '86, Kent '87 and Craig '90), this fund provides financial assistance to a student in need who shows a significant commitment to community service.

Peters Family Scholarship Fund

This fund provides support to students enrolled at De La Salle High school who are classified at Bishop Cummins Scholars who demonstrate a passion for faith, scholarship and integrity, who have an affinity towards, robotics, engineering or the sciences; demonstrate academic rigor and excellence as well as leadership among his peers; and well-rounded engagement in the co-curricular life of the school.

Ken Reidy '82 Endowed Memorial Fund for Financial Aid

Named as a lasting tribute to alumnus Ken Reidy '82, this fund benefits students with demonstrated financial need who show a special interest in math and science.

Brice Richard '93 Endowed Memorial Fund for Financial Aid

Established as a lasting legacy to Brice Richard '93, this fund provides financial assistance to four De La Salle students. such applicant qualifies for this preference, the recipient shall be an upper classman with demonstrated financial need.



Schuler Family Fund

Established in 2015, the Schuler Family Fund provides support to students enrolled at De La Salle High School who are classified as Bishop Cummins Scholars, raised in a single parent household and are receiving at least 50% aid to meet their tuition obligation.

Mr. and Mrs. Sharpes Family Fund

Established in 2015, the Mr. and Mrs. Sharpes Family Fund provides support to students enrolled at De La Salle High School who are classified as Bishop Cummins Scholars, raised in a single parent household and are receiving at least 50% aid to meet their tuition obligation.

George A. Viscia Memorial Scholarship Fund

Established in 2014, the George A. Viscia memorial Scholarship Fund provides students enrolled at De La Salle who demonstrate significant need, come from regional Catholic feeder schools, and/or come from a single or no parent household, but lack the resources to attend De La Salle.

Wallunas Family Athletic Fund

Established in 2018, the Wallunas Family Athletic Fund supports students through leadership in the classroom, co-curricular activities and their community. Preference is given to students who participate in a team sport, demonstrate academic rigor amongst peers, and well-rounded engagement in the life of the school.

Brother James B. Zachary Ward, FSC Endowment for Financial Aid

Honoring a former De La Salle faculty member, the Brother James B. Zachary Ward Endowment for Financial Aid will help support a junior or senior who promotes human welfare and who has displayed a compassionate love to those around him with great sincerity or devotion.

Frank Wolf Memorial Financial Aid Endowment

Established in November 2010 in honor of alumnus Frank Wolf '90, this fund provides financial assistance to a junior or senior who, as a result of unforeseen circumstances, is in need of financial assistance for the first time. In the event that no such applicant qualifies for this preference, the recipient shall be an upper classman with demonstrated financial need.

For additional information about endowments and named funds, please contact:

De La Salle High School, Office of Advancement

(925) 288-8100