

# Hunters Creek Elementary School Replacement School PAT Meeting #7 – 08.06.19



## AGENDA

- PAT Charge & Process
- Project Schedule
- Exterior Elevations – Revisited
- Courtyard – Revisited
- Exterior Materials
- Color Schemes
- Interior Concepts
- Next Steps & Questions

# Hunters Creek Elementary School

## PAT Charge

The goal of the PAT is to ensure that parents, staff and community members have the opportunity to take part in the planning and design of the new school.

The PAT members will serve as communicators to and from the community during the schematic design and design development phases of the project and participate in discussions that will lead to recommendations. The PAT concludes its work once construction begins.

All recommendations must be in alignment with the District's Educational Specifications and Design and Construction Standards.



# Hunters Creek Elementary School

## PAT Charge (continued)

The PAT will **reach a proposed recommendation through consensus**.

Any concerns identified by the PAT members should immediately be brought to the attention of the SBISD Project Manager.

These **recommendations will be presented** by the project's architects:

1. to the **Superintendent of Schools**, and based on approval from the Superintendent,
2. to the **Board of Trustees** for their approval.

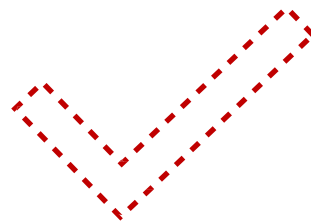
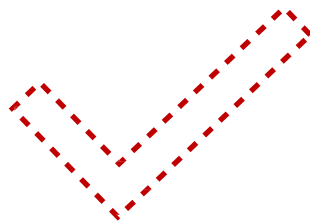
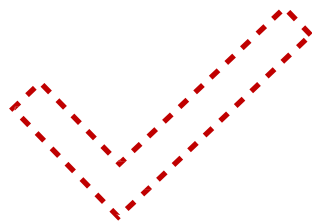


**The Board of Trustees may act upon the recommendations developed with PAT input by approving, amending, altering or not approving all or any part of the recommendations.**



# Hunters Creek PAT Engagement Process





# EXTERIOR CONCEPT IMAGES





# EXTERIOR CONCEPT IMAGES





# SITE PLAN





# COMPOSITE FIRST FLOOR PLAN

## Department Legend

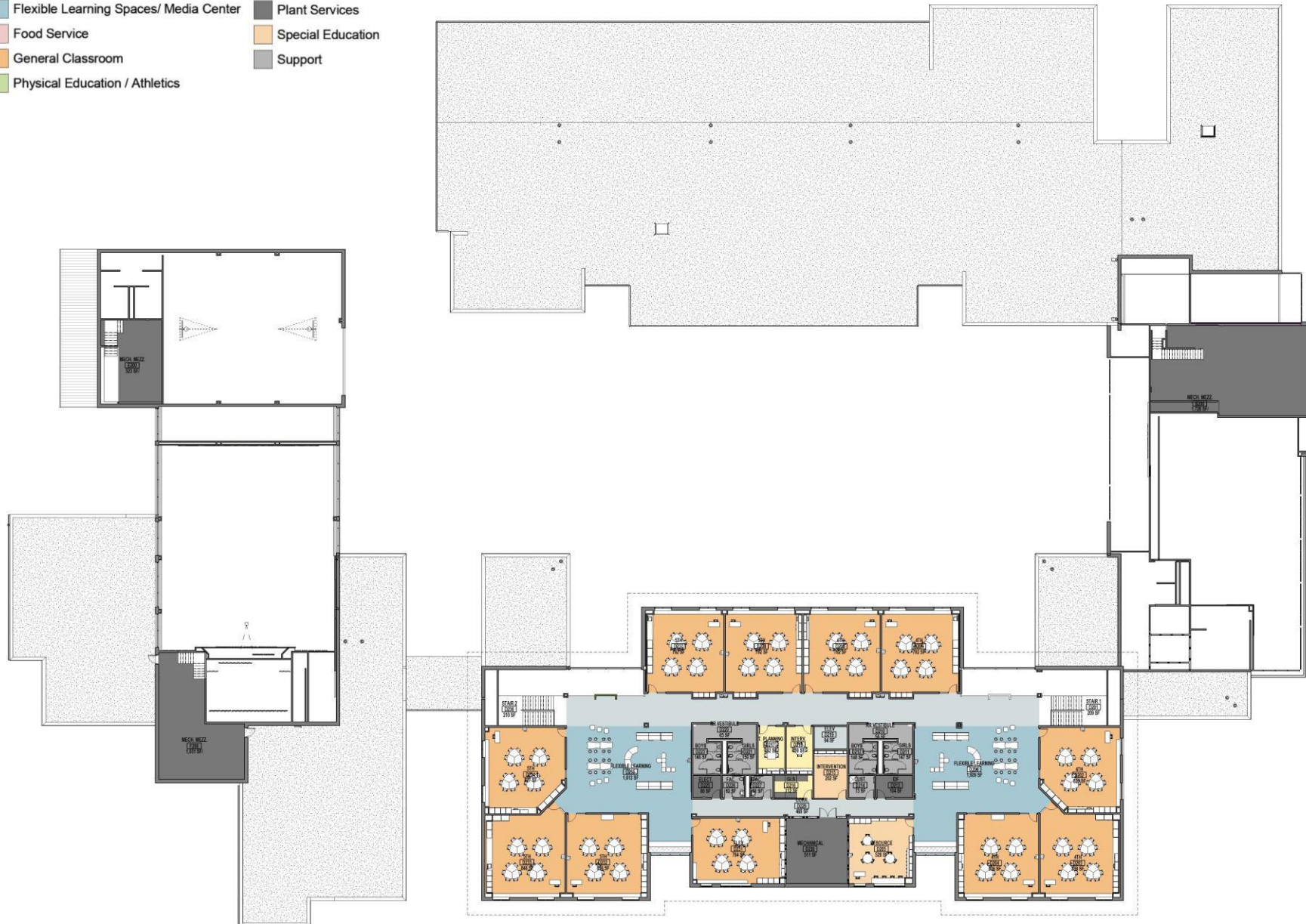
Administration	Flexible Learning Spaces/ Media Center	Plant Services
Circulation	Food Service	Special Education
Fine Arts	General Classroom	Support
	Physical Education / Athletics	



## COMPOSITE SECOND FLOOR PLAN

### Department Legend

- Administration
  Food Service
  Special Education
- Circulation
  General Classroom
  Support
- Fine Arts
  Physical Education / Athletics





WHERE WE LEFT OFF...







FRONT ENTRANCE

## FRONT ENTRY: OPTION A & OPTION B



**OPTION A**



**OPTION B**



## FRONT ENTRY: OPTION A & OPTION B



**OPTION A**



**OPTION B**



FRONT ENTRY: OPTION A & OPTION B



**OPTION A**



**OPTION B**



## FRONT ENTRY: OPTION A & OPTION B



**OPTION A**



**OPTION B**



# FRONT ENTRY: OPTION A PROPOSED





## FRONT ENTRY: OPTION A PROPOSED





# FRONT ENTRY: OPTION A PROPOSED - LIBRARY





## BUS DROP OFF: OPTION A PROPOSED





## PARENT DROP OFF: OPTION A PROPOSED

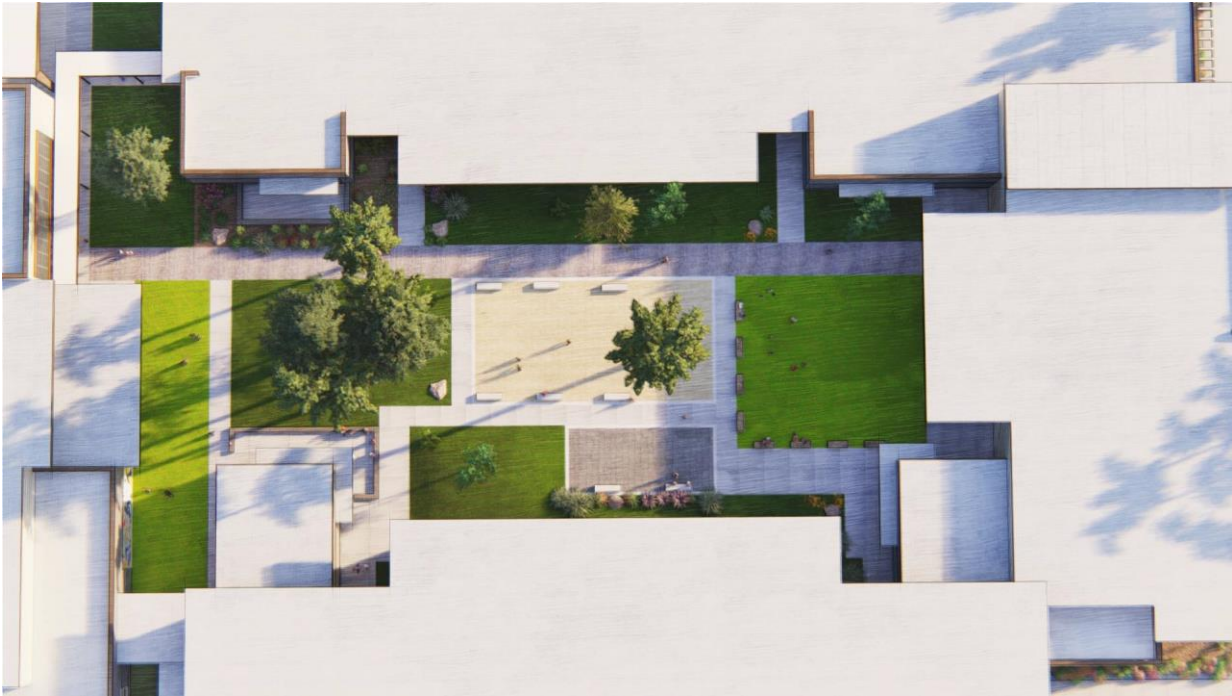






COURTYARD

COURTYARD PROPOSED PLAN: OPTION A & OPTION B

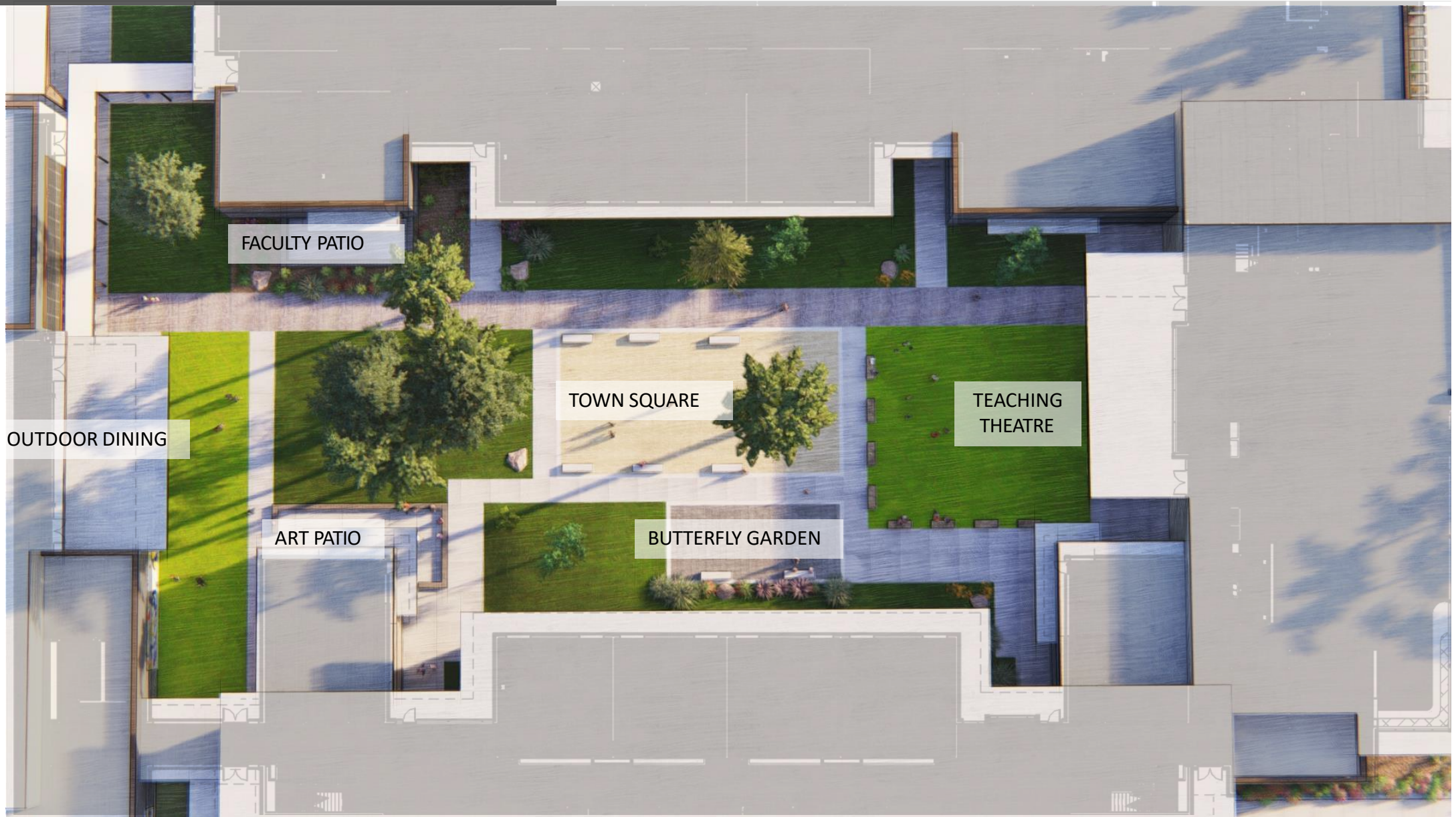


**OPTION A - RECTILINEAR**



**OPTION B - ORGANIC**

## COURTYARD: OPTION A PROPOSED PLAN





# COURTYARD: OPTION A PROPOSED - LIBRARY



TURF NOT CURRENTLY IN CONTRACT



# COURTYARD: OPTION A PROPOSED



POTENTIAL LOCATION  
FOR RAISED BEDS, NIC.



COURTYARD: OPTION A PROPOSED – CAFETERIA





# COURTYARD: OPTION A PROPOSED

MURALS NOT CURRENTLY IN CONTRACT





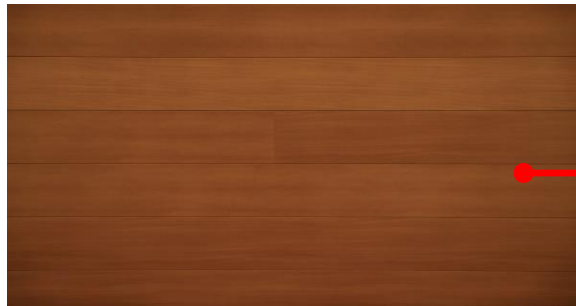
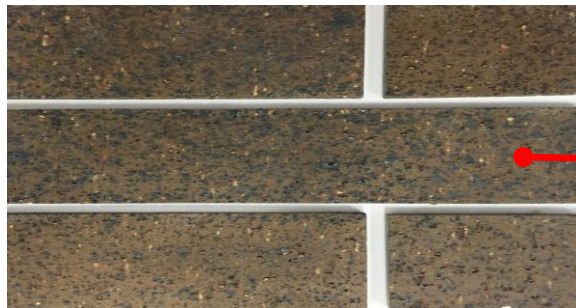
# PROPOSED PLAYGROUNDS





# MATERIALS





# EXTERIOR MATERIALS A





# EXTERIOR MATERIALS B





# EXTERIOR MATERIALS C





## EXTERIOR MATERIALS D





# EXTERIOR MATERIALS E





# INTERIORS

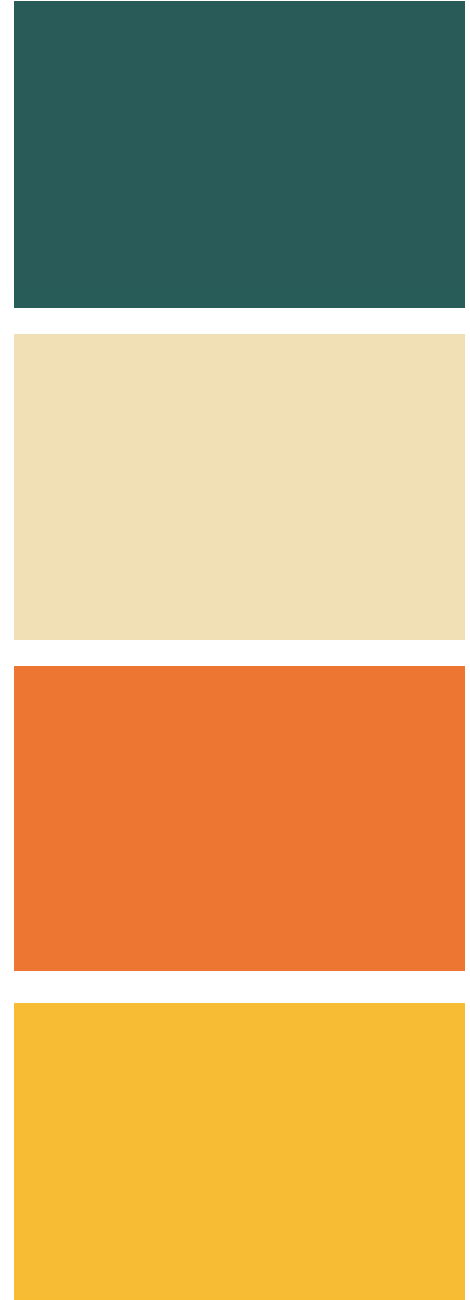
A word cloud shaped like a triangle, with words of various sizes and colors (yellow, green, blue, orange) arranged to form the shape. The words are related to nature, transparency, and home-like qualities.

HOME-LIKE  
TREES  
GLASS  
VISIBILITY  
LIGHT  
OUTDOORS  
NATURAL  
SAFETY  
AIRY  
WARM  
FLEXIBILITY  
NATURE  
WOOD  
FLOW  
TRANSPARENCY  
OPENNESS



## INTERIOR COLOR PALETTE A





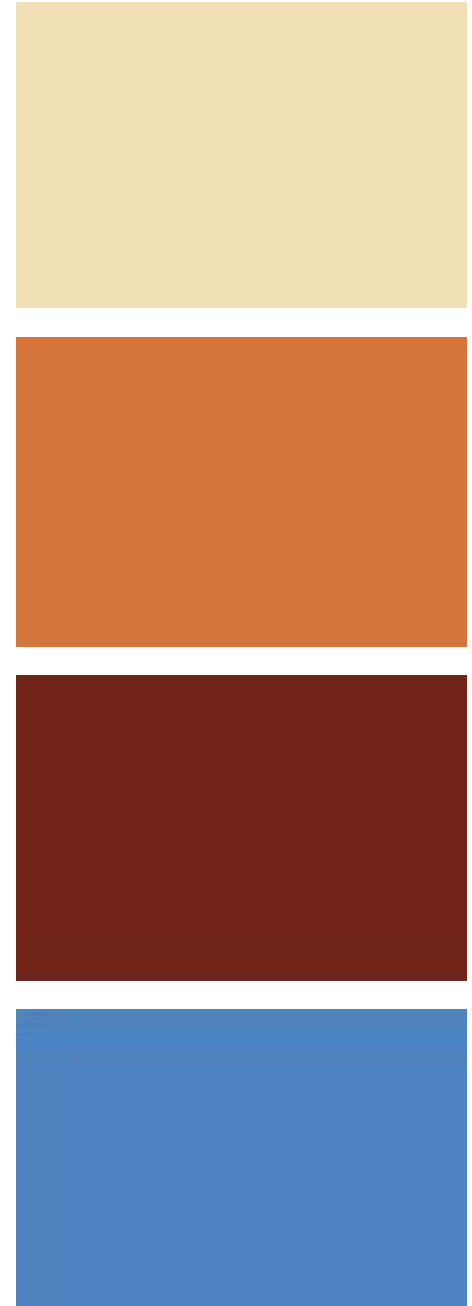
INTERIOR COLOR PALETTE B





INTERIOR COLOR PALETTE C





INTERIOR COLOR PALETTE D





# INTERIOR CONCEPT IMAGES



## INTERIOR CONCEPT IMAGES

CEILING IDEA FOR LIBRARY &  
OR COLABORATIVE SPACES

**CREATING COLLABORATIVE  
AND ENGAGING SPACE –  
BUILT-IN BENCH NEXT TO THE  
STAIRS**







### FLEXIBILITY

WRITABLE SURFACES AND BUILT-IN SEATING  
TO PROMOTE COLLABORATION

### WOOD

BRING THE OUTDOOR FEEL OF THE CAMPUS INSIDE.  
PROPOSE WOOD ON WALLS AND CEILINGS.

### TRANSPARENCY

BRING NATURAL LIGHTS INSIDE THE BUILDING AND  
BETWEEN CLASSROOMS AND CORRIDORS



## INTERIOR CONCEPT IMAGES



### STORY TELLING

BUILT-IN SEATING SPACE IN LIBRARY.



### CONNECTION TO NATURE

SEATING SPACES FACING OUTDOORS

### NATURAL

NATURAL MATERIALS THAT BLEND IN WITH THE SURROUNDINGS



## INTERIOR CONCEPT IMAGES



### TREES

EXPRESS TREES INSIDE GRAPHICALLY AND SYMBOLICALLY

### TRANSPARENCY

BOTH OUTDOORS AND FROM CLASSROOMS TO COLLABORATIVE SPACES

### WOOD

BRING THE OUTDOOR FEEL OF THE CAMPUS INSIDE. PROPOSE WOOD ON WALLS AND CEILINGS.

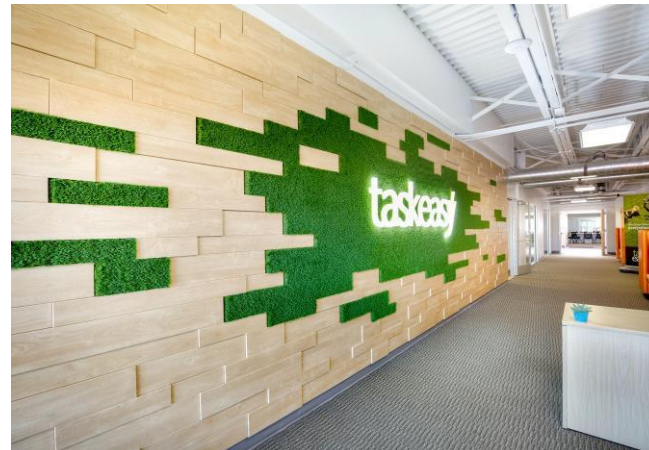


## INTERIOR CONCEPT IMAGES



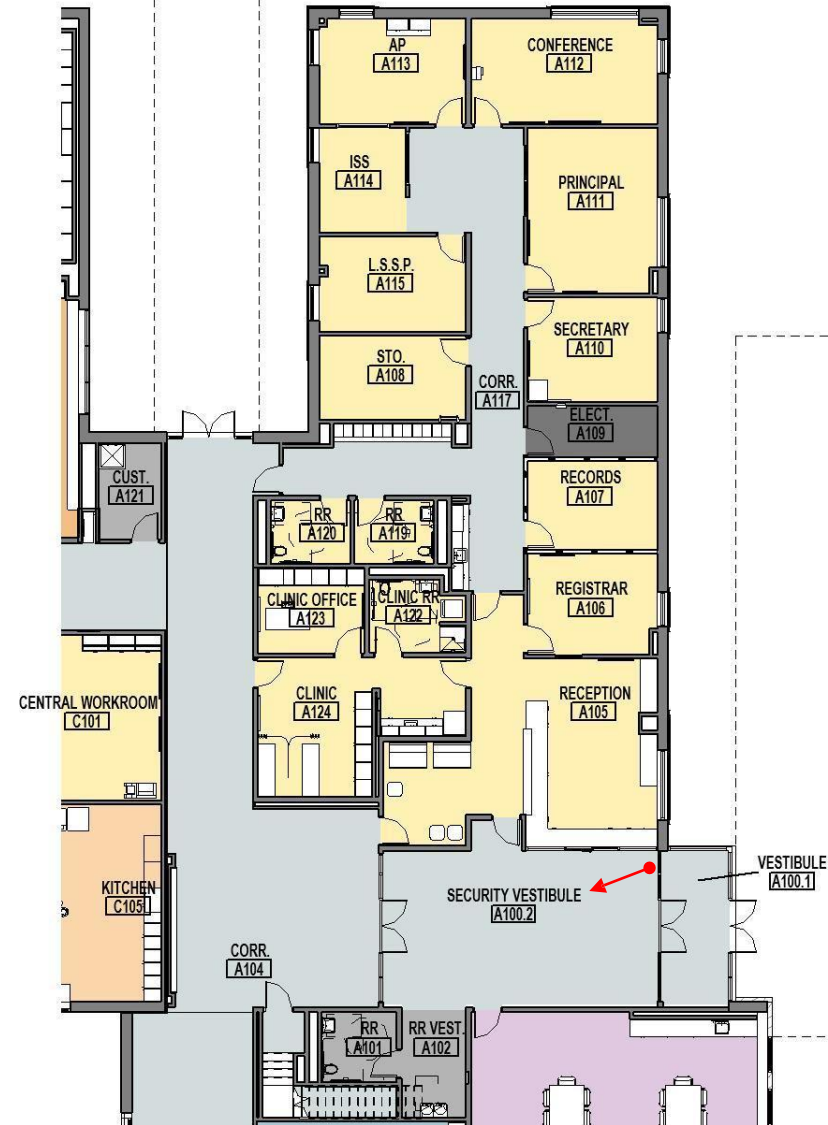
## GRAPHICS

TEXTURED WALL SURFACES WITH SIGNAGE,  
EDUCATIONAL AND INTERACTIVE DISPLAYS





# ENTRY/VESTIBULE





## CONCEPTUAL ENTRY/VESTIBULE

**WOOD** – BRING THE OUTDOOR FEEL OF THE CAMPUS INSIDE. PROPOSE WOOD ON WALLS AND CEILINGS.

**NATURAL MATERIALS** – PROPOSE EXTENDING THE EXTERIOR STONE INTO THE ENTRY VESTIBULE.

**TRANSPARENCY** – CLERESTORY GLAZING TO BRING IN NATURAL LIGHT.

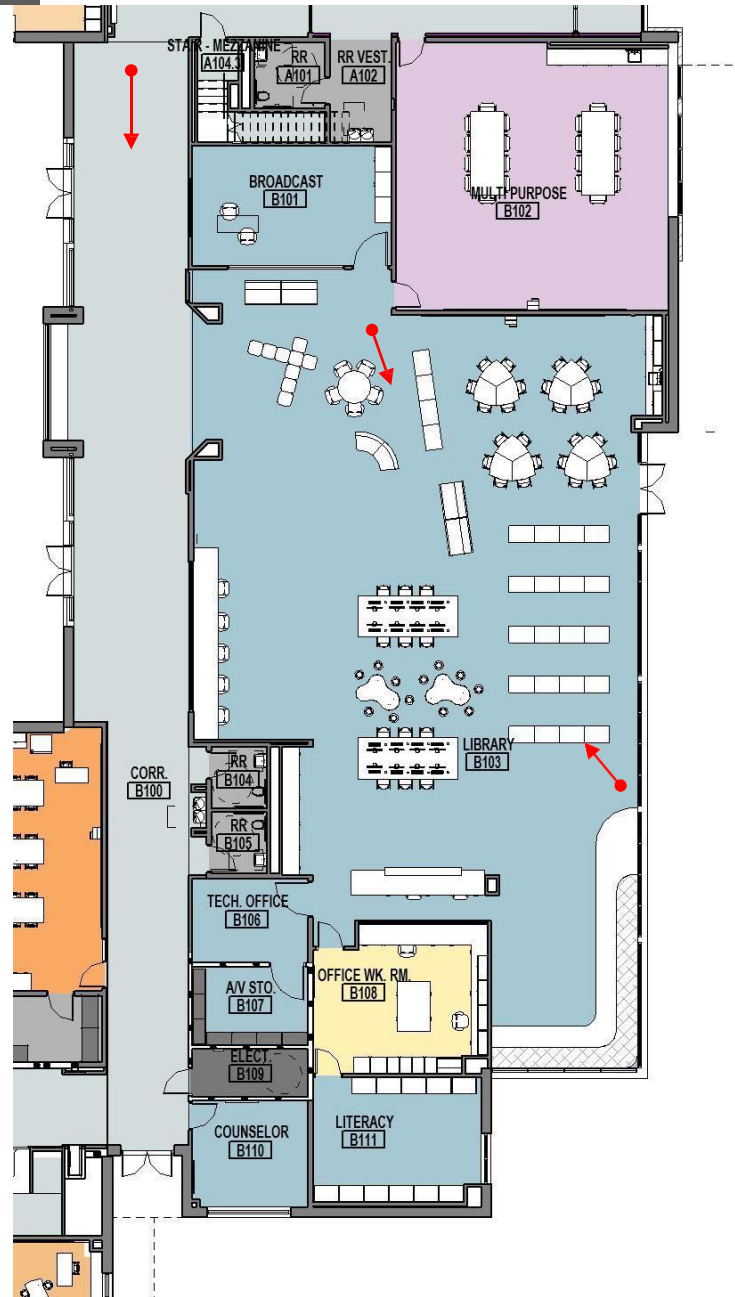
**REDUCE NOISE**– ACOUSTIC BAFFLE CEILING

**GRAPHICS** – OPPORTUNITIES FOR WALL GRAPHICS THAT RELATE TO THE CAMPUS



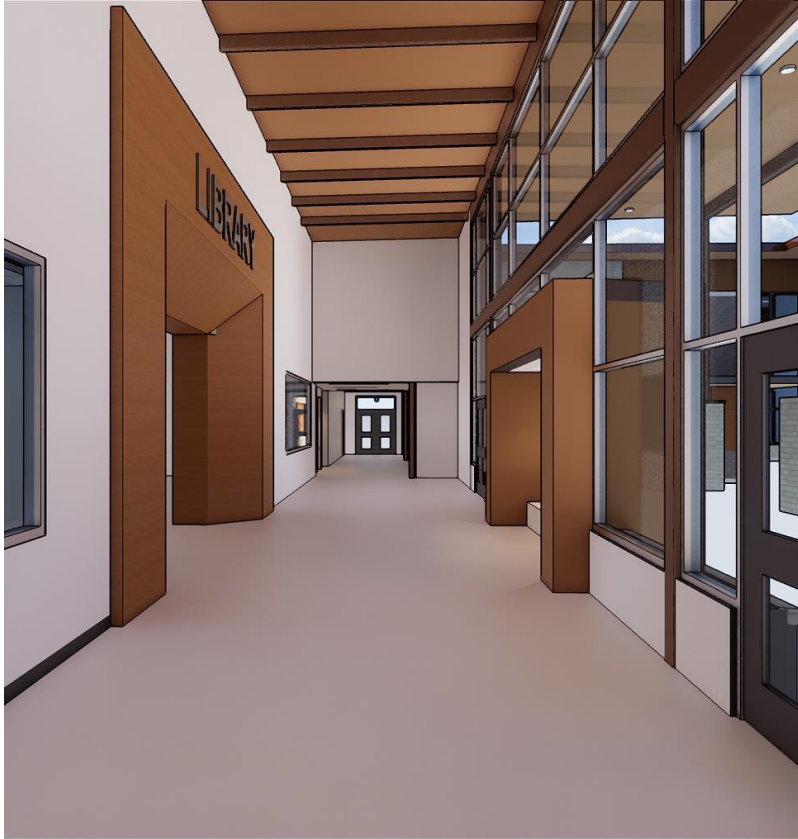


# LIBRARY





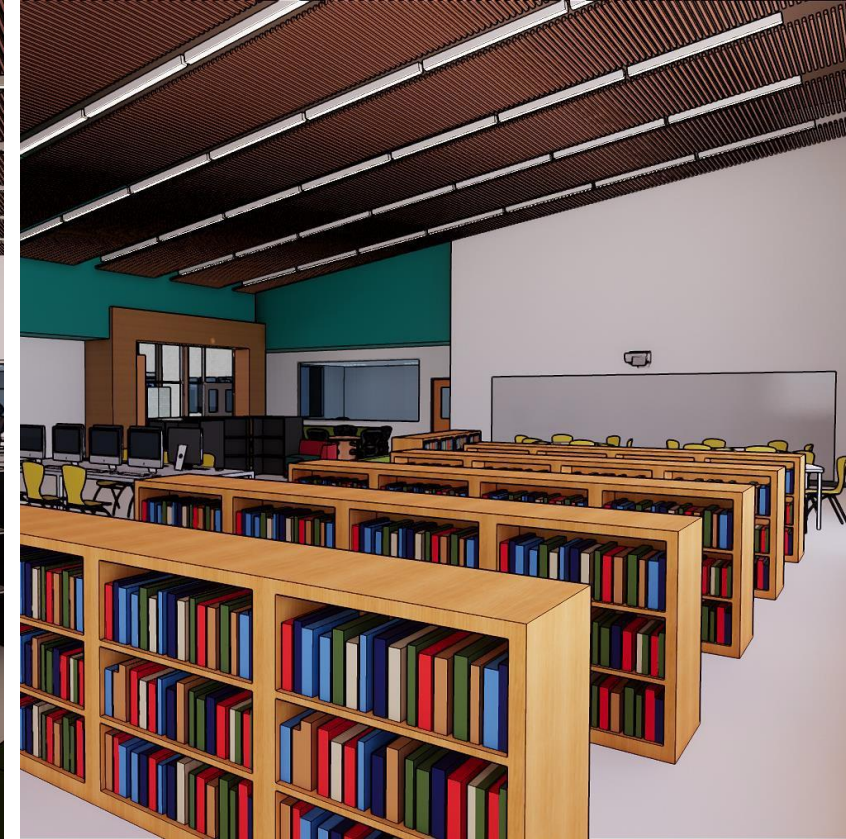
## CONCEPTUAL LIBRARY



**TRANCPARENCY** – FULL HEIGHT WINDOWS TO BRING IN AS MUCH NATURAL LIGHT AS POSSIBLE.



**CONNECTION TO NATURE** – SEATING SPACES FACING OUTDOORS. NATURAL MATERIALS THAT CONNECT TO THE EXTERIOR.



**WOOD** – BRING THE OUTDOOR FEEL OF THE CAMPUS INSIDE. PROPOSE WOOD ON WALLS AND CEILINGS.



# COLLABORATION SPACES





# CONCEPTUAL COLLABORATION SPACES

**WOOD** – BRING THE OUTDOOR FEEL OF THE CAMPUS INSIDE. PROPOSE WOOD ON WALLS AND CEILINGS.

**FLEXIBILITY** – MOVEABLE FURNITURE ALLOWS FOR MULTIPLE CONFIGURATIONS OF THE COLLABORATION SPACE.

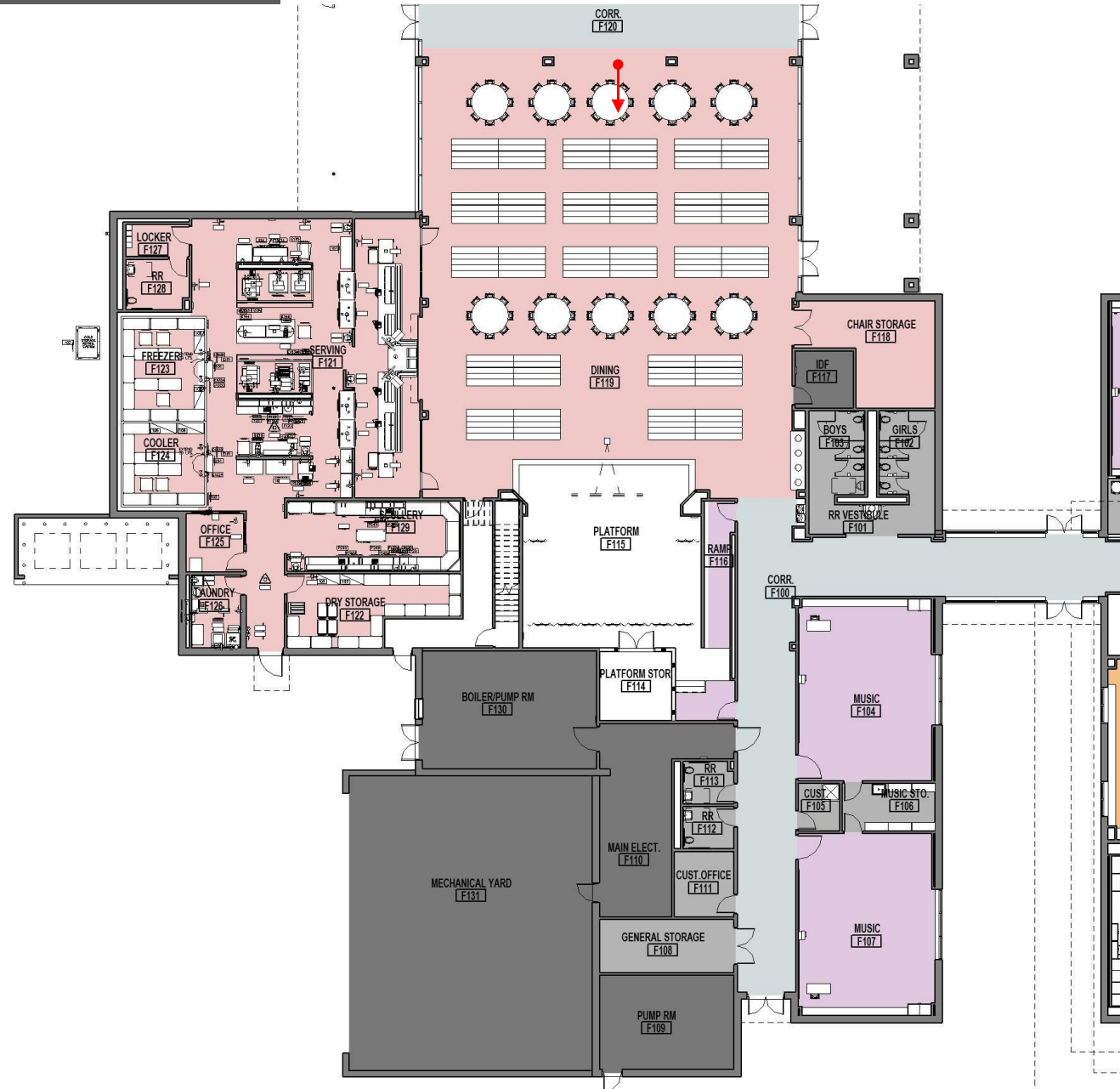
**TRANSPARENCY** – GLASS FROM CLASSROOMS TO COLLABORATIVE SPACES AND TO THE EXTERIOR.

**OPENNESS** – OPEN FLOOR PLAN PROMOTES COLLABORATION AND FLEXIBILITY





# CAFETERIA





## CONCEPTUAL CAFETERIA



**WOOD** – NATURAL FINISHES AT AND SURROUNDING THE STAGE

**TRANSPARENCY** – GLASS ON BOTH SIDES OF THE CAFETERIA ENHANCE THE VISUAL CONNECTION FROM THE CAFETERIA TO THE PLAYFIELDS

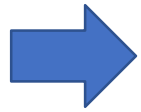
**REDUCE NOISE** – DECORATIVE CEILING TO AID WITH ACOUSTICS.



# Hunters Creek Elementary School

## Next Steps

PAT Meeting Schedule: all meetings are at 3:20pm at HCE



- |                     |                       |                                  |
|---------------------|-----------------------|----------------------------------|
| ▪ <b>Meeting #7</b> | <b>August 6, 2019</b> | <b>Design Development Update</b> |
| ▪ Meeting #7.5      | September - TBD       | Design Development Continuation  |
| ▪ Meeting #8        | November 6, 2019      | Final Presentation               |

## QUESTIONS?