



**Best *for*
the World**





The Beginning

Jakarta Intercultural School (JIS) was established in 1951 as the International School of Djakarta, with three teachers and eight children ranging from three to 10 years old. Over the decades, our community grew to thousands of students, parents, faculty members, staff, and alumni from all over the world — all connected by the same mission, vision, and values.



Our Values

We are

passionate, inquisitive and creative – learning in Indonesia to be *Best for the World*.

We value

perseverance, integrity, responsibility, respect, compassion, balance and fun.

We will

inspire joyful, rigorous learning and foster wellness as a pioneering, inclusive and collaborative community.

We learn

by reflecting and relating, by being resourceful and resilient.



What does it mean to be **Best for the World?**

A Community of Care that values respect and inclusivity.

Creating change alongside social organizations.

Serving as **environmental custodian**
for a sustainable future.

Engaging with Indonesia through collaborative
teacher-training programs and the JIS
Bhinneka Tunggal Ika scholarship.

Working with and for the community
as partners in service learning.

10 Reasons to Join JIS



1 Spacious Campuses

Three campuses spread across 46 acres (18.6 hectares).

2 World-Class Facilities

184 classrooms, 18 science labs, 6 gymnasiums, 4 libraries, 3 swimming pools, and much more.

3 Balanced Learning

Inquiry-based curriculum with equal emphasis on academics, sports, music & the arts.

4 Top University Acceptances

Students move on to study at top universities around the world.

5 Intercultural Environment

Students represent more than 60 nationalities.

6 Low Teacher-Student Ratio

Students receive individualized support in small classroom settings.

7 Global-Standard Curriculum

International Baccalaureate®, Advanced Placement®, Global Online Academy.

8 Co-curricular Programs

Offering more than 500 clubs and activities.

9 Service Learning

Working with social organizations to serve communities nationwide.

10 Strong Alumni Network

Once a Dragon, always a Dragon.



Intercultural Environment

JIS is a community of over 2,000 students representing more than 60 nationalities who learn and grow together in a truly intercultural environment.

With Indonesia's national motto, "Unity in Diversity" as our guide, JIS is committed to cultivating a Community of Care that values inclusivity and belonging.

Each in-school program and co-curricular activity is designed to encourage student involvement and advocate mutual respect from an early stage.

More than just a school, JIS is a family of lifelong learners.



"In schools, we know the importance of belonging and of having an inclusive community that welcomes all."

Maya Nelson, JIS Alumna and Head of School

World-Class Facilities

We work with the best architects who specialize in schools to build campuses that reflect our core values. When you walk around any of our campuses, you will see our state-of-the-art facilities, many of which are purpose-built. All students from Early Years to Grade 12 have access to resources, learning spaces, and technology that support their learning and make their thinking visible, including:



184

Classrooms

18

Science laboratories

6

Gymnasiums

6

Sports fields

4

Libraries with over 130,000 titles

3

Swimming pools





Internationally Accredited Curriculum

The JIS Curriculum aims to develop passionate, inquisitive, and creative learners who embody our seven values and develop their learning dispositions.

We teach students *how* to think, developing their competencies to be resourceful, manage their own cognitive processes, and relate with others. These principles put students at the center of teaching and learning, asserting that they should

experience a curriculum that engages and challenges them, is forward-looking and inclusive.

As a school that offers both the International Baccalaureate® (IB®) and Advanced Placement® (AP®), JIS is committed to providing the guidance and mentorship needed for High School students to achieve their academic goals for higher education.

International Baccalaureate® (IB®)

The International Baccalaureate® (IB®) is a two-year pre-university program leading either to the IB® Diploma or to separate IB® subject certificates, depending on the student's plans for further education. A highly respected academic program, the IB® is recognized by colleges and universities in nearly 90 countries across six continents.

The International Baccalaureate (IB®) Career-related Programme is designed for students who want to dedicate themselves to career-related learning, fostering skills in applied ethics, intercultural understanding, critical and creative thinking, effective communication, and personal development.

Advanced Placement® (AP®)

The College Board's Advanced Placement® (AP®) is a rigorous academic program that allows academically prepared high school students to study and learn at the college level. Each AP® course is modeled on a comparable college course.





Exceptional Faculty

We take pride in our exceptional faculty, a culturally diverse set of educators selected for their commitment to education.

While the majority of our educators come from the United States, our teachers represent over twenty countries, including Australia, Canada, the United Kingdom, India, New Zealand, and, of course, our host country, Indonesia.

Our educators are not only teachers; they are specialists in their fields and play a vital role at JIS. They aim to go beyond traditional teaching, serving as influential mentors who help our students navigate their academic, extracurricular, and social experiences. Our faculty is the core of our institution, and their expertise is our primary asset.



"I love the lush green campus where you really feel connected to nature. I love that I see a holistic approach to teaching and learning in action each day; it's visible and not just words in a mission and vision statement. I love the connections that we have to our host country and that this is a priority for JIS."

Lia Chumtong
Teacher



"I enjoy seeing innovative ways of learning in maker education. It is exciting to see the aha moments that students have as they explore new ways of thinking, learning, and solving problems."

Jason Graham
Digital Literacy Coach

Spacious Campuses

JIS is one of the largest international schools in the world, comprising three fully equipped campuses.

Pattimura Elementary (PEL) Campus

Near the central business hub of Jakarta, where many embassies are located, PEL is dedicated to educating learners from Early Years to Grade 5. This is also the home of our JIS Learning Center (JLC) Elementary Program for children with moderate-to-severe learning needs. PEL is currently undergoing an impressive three-year redevelopment project that will be completed in 2025.

Pondok Indah Elementary (PIE) Campus

Also catering to Early Years to Grade 5 students, the PIE campus is home to our purpose-built Early Years Center (EYC), an ecologically designed building featuring 12 classrooms, two Makerspace workshops, a dance and movement studio, an art room, a training kitchen, and much more.

Cilandak (CIL) Campus

This campus comprises our Middle School, the JLC Secondary Program, and High School. Students are surrounded by lush gardens and towering trees, with access to science labs, sports equipment, art studios, libraries, and common spaces that reinforce balanced learning.



Comprehensive Academic Program

From Early Years to High School, JIS offers a premier academic program that is accredited by the Western Association of Schools and Colleges (WASC) and the Council of International Schools (CIS).

The **JIS Early Years** curriculum is based on a Reggio-inspired philosophy with a workshop approach to literacy and numeracy development. We provide learning experiences that are appropriate and aligned with the sociocultural context of each child's upbringing.

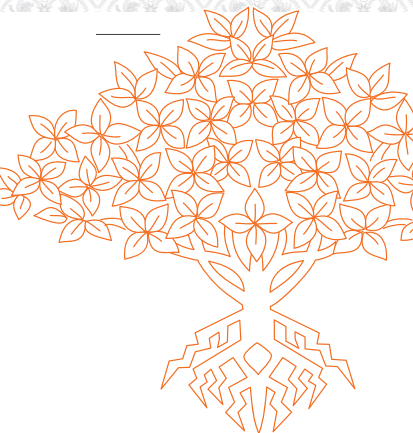
The **JIS Elementary School** curriculum adopts programs that demonstrate the best international standards, practices, and results for student learning. We place a strong emphasis on language arts and mathematics. To ensure a balanced curriculum, we provide programs in science and technology, social studies, modern language, fine arts, and physical development.

The **JIS Middle School** curriculum emphasizes research-based teaching and learning practices through age-appropriate intellectual, physical, cultural, and social experiences.

The **JIS High School** is an inquiry-based academic program designed to prepare students for a university that fits them best and includes the option to take International Baccalaureate® (IB®) and Advanced Placement® (AP®) courses, as well as pursue the IB® Diploma Programme or IB® Careers-related Programme.

The **JIS Learning Center (JLC)** Elementary and Secondary programs were established to best serve students with neuro-diversities, or moderate-to-severe learning needs. The curriculum includes modified academic instruction in areas such as reading, writing, and mathematics, as well as additional instruction in adaptive and daily living skills, social skills, and building independence based on each child's Individualized Learning Plan (ILP).





Early Years

Our Early Years Program (ages 3-6) immerses children in an atmosphere of wonder, care, exploration, and growth.

Young children learn best through direct sensory encounters with the world rather than through abstract and formal academic procedures. The program is supported by qualified, committed educators who guide young children to take their first steps toward lifelong learning, and their personal, social, and academic development.

Our program:

- Promotes oral language as the foundation of literacy development.
- Empowers children to make supported and independent decisions about their learning engagements, tools, materials, and partners.
- Supports children to understand their experiences with others and the world through exploration and play with a variety of materials.
- Introduces the outdoors as an integral part of the learning environment.
- Gives children the opportunity to learn in multi-age environments.





Elementary School

Our Elementary School program (Grades 1-5) aims to build each child to become a thinker, creator, feeler, problem solver, and doer.

Our inquiry approach to learning is founded in research and we believe that there must be clearly stated goals and objectives established collaboratively and supported by teachers, administrators, and parents.



Our program:

- Encourages each child to reach his or her full potential within a challenging inquiry-based curriculum based on high expectations.
- Is a well-defined, balanced curriculum that challenges students in purposeful, relevant activities.
- Is an inquiry approach that places a strong emphasis on language arts and mathematics.
- Highlights science and technology, social studies, modern language, health and physical development, and visual and performing arts.
- Involves regular assessments of students and evaluations of lessons/activities.
- Follows Indonesian government regulations that require all Indonesian students to take Bahasa Indonesia and civics classes, as well as religious studies.





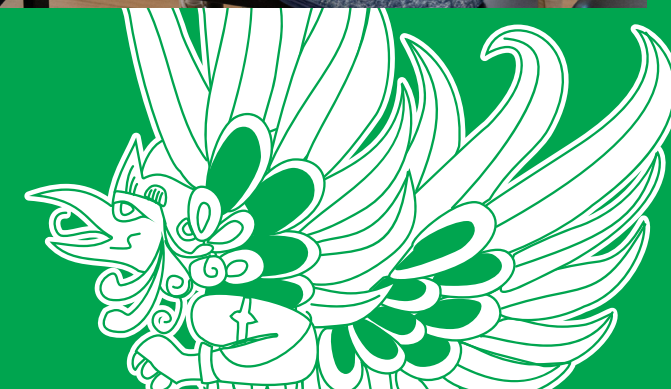
Middle School

Our Middle School program (Grades 6-8) recognizes that Middle School students are in the midst of a unique period of change, from childhood to adolescence. As such, their education should be broad, challenging, and designed to help nurture each learner and help them achieve their full potential.

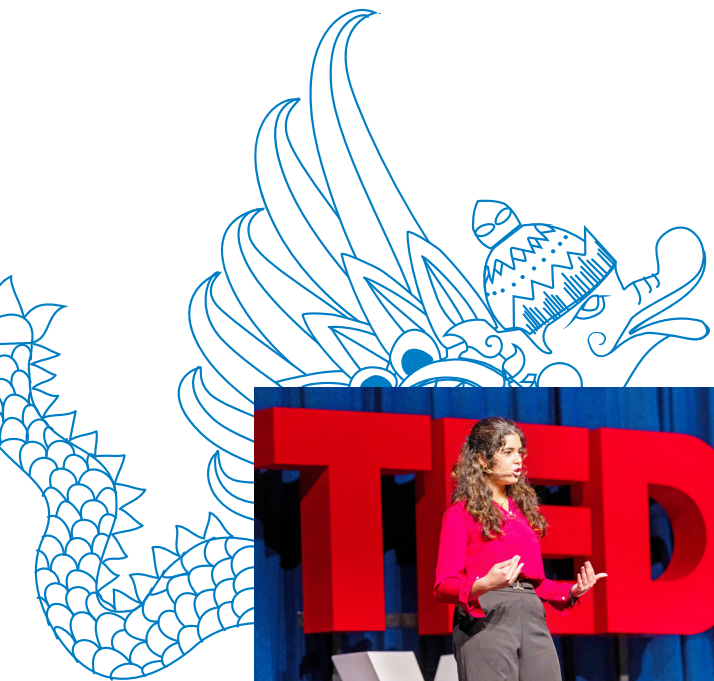
Students are challenged as learners using research-based teaching practices that support various learning styles. We promote initiative participation and collaboration, along with opportunities to exercise creativity, courage, and compassion.

Our program:

- Is designed to prepare students for our rapidly changing world.
- Incorporates the United Nations Sustainable Development Goals (SDG) into the curriculum to ensure a global understanding of the impacts that we have on our environment.
- Celebrates student voice, choice, and agency.
- Supports an atmosphere that is physically and emotionally safe, free of prejudice, and respectful of what makes each student unique.
- Encourages partnerships between home and school.
- Celebrates Indonesia's unique and diverse cultural and geographic features.
- Follows Indonesian government regulations that require Indonesian students to take Bahasa Indonesia and civics classes, as well as religious studies.



High School



Our High School (Grades 9-12) program is based on the best curriculum models worldwide, which are designed to prepare students for college or university. Our inquiry-based approach is expansive and attuned to the needs of 21st-century learners, with the aim of preparing them for life's possibilities by placing equal emphasis on academics, the creative arts, technology, service learning, and sports.

The four-year program is based on the North American model, whereby students accumulate “credits” toward graduation and a high school diploma. All courses are taught in English, with the exception of modern language and mother tongue course offerings.



Our program:

- Includes a Grade 9 and 10 curriculum that is based on international standards and was designed to prepare students for success in Grades 11 and 12. Students in Grade 10 have the option to take a select number of Advanced Placement® (AP®) courses.
- Offers Grade 11 and 12 students the option to take courses in the International Baccalaureate® Diploma Programme (IB®DP), the IB® Careers-related Programme (IB®CP), and Advanced Placement® (AP®) curriculum, including the AP® Capstone Diploma.
- Enforces Indonesian government regulations that require all Indonesian students to take language, literature, and civics courses, then national exams in Grades 9 and 12.
- Requires all students to complete Creativity, Activity, and Service (CAS) activities throughout High School.





Connections

Once a Dragon, Always a Dragon

JIS alumni are our Mission in action. To understand the impact of a JIS education, look no further than our Dragons, both locally and globally.



From politicians and performers to entrepreneurs and athletes, activists and artists to explorers and engineers, scientists and authors to inventors and philanthropists, JIS alumni exemplify what it means to be Best for the World. Diverse and connected, the JIS community stretches beyond borders and is an immediate extended network for anyone joining our community to enjoy lifelong.

Our active alumni program ensures that both alumni and current students benefit from a rich variety of opportunities provided by our global network. Mentoring, internships, social events, and shared service opportunities are just a few of the ways the Naga Spirit will accompany every member of our connected JIS community.



Join Us

How to Apply



<https://www.jisedu.or.id/admissions/apply>

School Fees



<https://www.jisedu.or.id/admissions/fees>



What Our Community Says About Us

"There is no doubt in my mind that my experience here at JIS was formative. It is really inspiring to see [students] and to know that JIS is continuing the tradition of bringing the world together, making the world a smaller place, and helping us to understand that it is our relationships with other countries [...] that matter in creating a just and peaceful world."

Pramila Jayapal

Alumna (1982) and US Congresswoman

"I think JIS's mission to be Best for the World is an interesting one. We often hear within families or friend groups that the idea of being the best is getting into the best university, having the best GPA, or doing really well in sports competitions. But people don't often think about how we can best serve those around us be the best version of ourselves."

Alexandra

High School Student



What Our Community Says About Us

"It has been great for us as parents to know that our three kids have been enjoying an excellent education and a truly outstanding community experience with JIS. We have been really grateful seeing them come home from school (almost always) happy, inspired, and enthusiastic, as their level of fulfillment and academic success constitutes a very important pillar of our time in Indonesia."

Philipp
Parent

"This is the most supportive community of teachers, leaders, students, and parents. If you listen to the stories teachers and students tell, it's easy to see that our values, vision, and mission are embedded in our policies and practices. I think it is really special that these are lived and not just words on the wall. It makes it hard to imagine going anywhere else."

Ryan Burke
High School Associate Principal



Jakarta Intercultural School

Learning in Indonesia to be best *for* the world

www.jisedu.or.id

 Jakarta Intercultural School

 Jakarta Intercultural School

 @JISofficial

 Jakarta Intercultural School