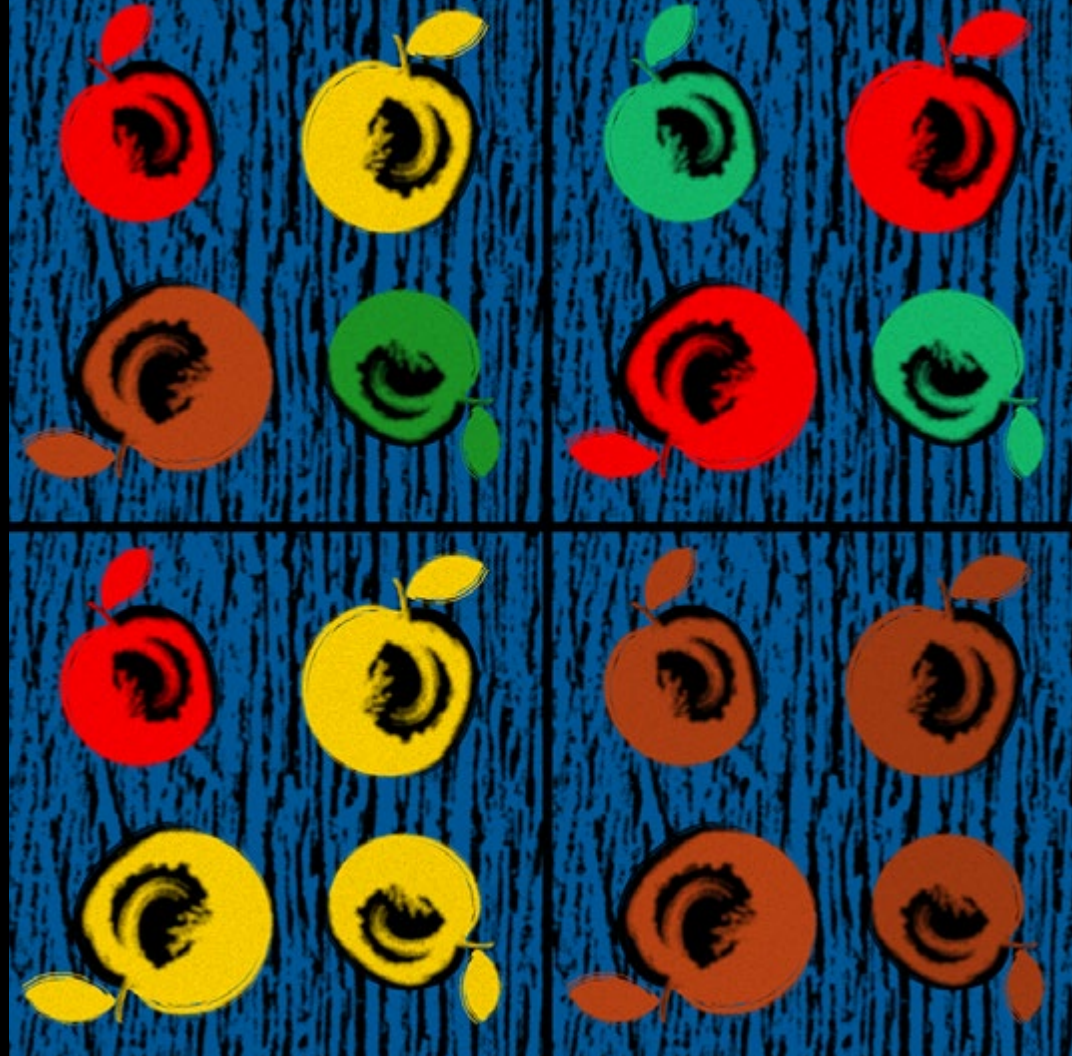




WILSHIRE BOULEVARD TEMPLE

# HIGH HOLY DAYS

5780/2019





WILSHIRE BOULEVARD TEMPLE

# HIGH HOLY DAYS 5780/2019

Please keep this guide and use it as a reference throughout the High Holy Day season.

This information is also available online at [holydays.wbtla.org](http://holydays.wbtla.org).

If you have questions, contact the Membership office at (213) 835-2132 or (213) 835-2142 or [membershipservices@wbtla.org](mailto:membershipservices@wbtla.org). We are looking forward to beautiful and meaningful High Holy Days with you.

## Clergy

Rabbi Steven Z. Leder *Pritzker Chair, Senior Rabbis*

Cantor Don Gurney

Rabbi Elissa Ben-Naim

Rabbi David Eshel

Rabbi M. Beaumont Shapiro

Rabbi Susan Nanus

Rabbi Joel Nickerson

Cantor Lisa Peicott

Rabbi Aviva Funke

Rabbi Karen Fox, Emerita

Rabbi Harvey J. Fields, Ph.D., z"l

Wilshire Boulevard Temple Board of Trustees: Alberto Valner, *President*; Dena Bloom, *Vice President*; Scott Edelman, *Secretary*; Simon Furie, *Treasurer*; Rick Powell, *Immediate Past President*; David Wimmer, *Counsel*; *Board Members*: Ronn Davids, Deborah Dragon, Jim Hyman, Rebecca Jonah, Skip Kessler, Fred Kunik, Caroline Kuperstock, Brian Milder, Bruce Rosenblum, Toni Schulman, Reagan Silber, *Honorary Board Members*: Howard M. Bernstein, Audrey Irmas, Julie Miller, Richard Pachulski  
Executive Director: Donna Nadel



5780/2019

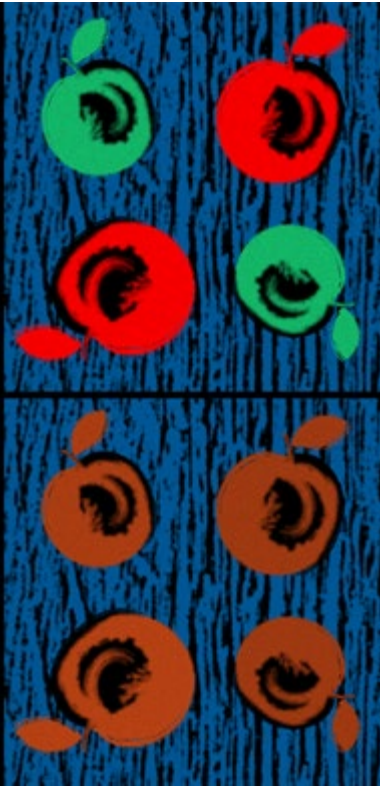
## THE POWER OF SWEETNESS

We say it every High Holy Days, *Shana Tova u' Metukah* - "May you have a good and sweet year." To emphasize the point, we eat apples and honey to actually taste the sweetness. On Shabbat, we wish each other peace (Shabbat Shalom), and on all other holidays, we wish each other happiness (Chag Sameach). It is only during the Days of Awe that we hope for sweetness. The custom of wishing for sweetness originated in medieval times, but what does it really mean? Is there any deeper significance to this special greeting used only at the holiest time of the year? And what about eating apples and honey? Are they meaningful in any way, or will any sweet food suffice?

Our sacred teachings reveal some surprising and beautiful answers. In Psalm 119 we read, "How sweet are your words (of Torah) to my taste, sweeter than honey to my mouth!" In Proverbs 24 it is written, "Eat honey, my son, for it is good; honey from the comb is sweet to your taste. Know also that wisdom is like honey for you: If you find it, there is a future hope for you, and your hope will not be cut off." In Proverbs 16, "Kind words are a honeycomb, sweet to the soul and healing to the bones." And in Psalm 55, "My companion, my friend, sweet was our fellowship; we walked together in God's house." In other words, sweetness represents Torah and *mitzvot*, wisdom, kindness, and true friendship. And honey, in particular, which is known for its powerful healing properties, symbolizes the purity and wholeness of these virtues.

According to Jewish mysticism, the apple represents the *Shekhinah* (the feminine aspect of God) who is watching us with love and compassion as She evaluates our behavior during the past year. It is also a symbol of the Garden of Eden, which our Hasidic masters tell us smelled like an apple orchard. Furthermore, when Solomon depicts the love God harbors for His people, he writes in the Song of Songs: "Beneath the apple tree I aroused your love." Eating an apple on Rosh Hashanah is an attempt to remind God of our age-old relationship of love and forgiveness.

*Shana Tova u' Metukah*. How powerful are these four simple words. We wish you a year of goodness and growth, wisdom and hope, kindness and companionship, love and forgiveness. We wish you a sweet New Year.



The High Holy Days begin through the gates of S'lichot, our prayers of forgiveness.

S'lichot

5



Rosh Hashanah celebrates the Jewish New Year and the creation of the world.

Rosh  
HaShanah

6



During the Tashlich ceremony, we symbolically cast off our sins by casting them into flowing water.

Tashlich

7



Shabbat Shuvah highlights the ethical teachings of the Torah as we prepare for atonement on Yom Kippur.

Shabbat  
Shuvah

8



Prayer, music, repentance, and fasting contribute to the personal introspection of Yom Kippur, the Day of Atonement.

Yom  
Kippur



Yizkor, a solemn service of remembrance.

Yizkor

12



Child care, featuring age appropriate holiday experiences, is available for children 10 and under while parents are in services.

Child  
Care

13



Sukkot is a celebration of thanksgiving for the fall harvest.

Sukkot

15



On Simchat Torah we joyfully celebrate the completion and renewal of our annual cycle of Torah reading.

Simchat  
Torah

16



Traditional and contemporary High Holy Day prayers and music in a participatory and interactive service.

Koleinu

17



Parking information, transportation options, and arrival information.

Parking  
and  
Arrival

19

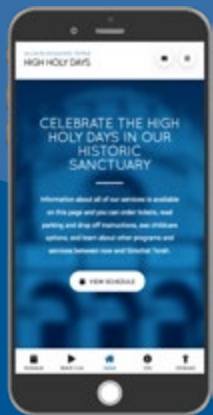


Our High Holy Day Calendar includes all dates, services, times, and locations.

Calendar

21





New this year, our High Holy Days app with services times, parking instructions, childcare options, study sessions and special programs.

Learn more at:  
**[wbtda.org/app](http://wbtda.org/app)**

## General Information

### We are here to help you...

For extra tickets and answers to all questions you cannot find in this guide or on our website at [holydays.wbtda.org](http://holydays.wbtda.org), contact the Membership office at (213) 835-2132, (213) 835-2142, or [membershipservices@wbtda.org](mailto:membershipservices@wbtda.org).

### Extra tickets

Temple members may purchase extra tickets at [wbtda.org/hdhtickets](http://wbtda.org/hdhtickets) for family and guests. Please note that since tickets have already been distributed, if you have reserved seats, additional seats may not be adjacent to your current seats.

### Reciprocal tickets

If you wish to worship at an out-of-town temple, please go to [wbtda.org/hdhtickets](http://wbtda.org/hdhtickets), then fill out the form and submit the request. You may also contact Membership Services at (213) 835-2142 or [membershipservices@wbtda.org](mailto:membershipservices@wbtda.org). When space allows, current members are welcome at other congregations. Please note, however, that High Holy Day seating is based on the discretion of the host congregation.

### Kippot and Tallitot

Kippot and tallitot are available at all services.

### Large-Print Prayer Books

We offer large-print High Holy Day prayer books for adults with impaired vision. Ask for one when you enter the Sanctuary.

### Hearing System

Headsets are available on a first-come first-served basis in the Sanctuary. You will be required to leave a photo ID at check-in in the foyer.

### Live Streaming Services

All adult services in the Sanctuary will be streamed live at [wbtda.org/live](http://wbtda.org/live). The prayer book is available at [wbtda.org/hhd-prayer-book](http://wbtda.org/hhd-prayer-book).

### Emergency Services

When you are at Wilshire Boulevard Temple, you are always in safe hands. All of our security personnel are highly trained and have the ability to deal with medical and safety issues. In addition, many of our ushers have been trained in CPR, first aid, and Automated External Defibrillator (AED) use. Special thanks to congregant, Les Bronte, for organizing these trainings. In case of emergency, please follow instructions from personnel handling the situation.



# S'lichot

*S'lichot* are prayers of forgiveness that help us prepare our souls for the High Holy Days, recited on the Saturday night before Rosh Hashanah.



"On the High Holy Days I am reminded of the sweet smells and flavors of the wild fennel plants that grow throughout the hills and creek beds of our beloved WBT Camps. In this new year of camp revitalization may those sweet smells and flavors flourish above the ashes. *L'shana Tova Tikatevu.*"

- Jake Glucksman, *Camp Committee Chair*

## A Los Angeles S'lichot

📅 Saturday, September 21, 7 p.m.

► Temple Emanuel of Beverly Hills  
8844 Burton Way, Beverly Hills, 90211

Featuring the music of prominent LA composers of the past and present such as the works of Ami Aloni, Cantor Meir Finkelstein, and many more. The rabbis, cantors and choirs of University Synagogue, Temple Emanuel of Beverly Hills, Kehillat Israel, and Wilshire Boulevard Temple invite you to come together for food, music, study and prayer. Join us for a dessert buffet and a chance to study with the rabbis of other synagogues.

📅 RSVP at [holydays.wbtla.org](https://holydays.wbtla.org)



# Rosh HaShanah

Beautiful and majestic, Rosh HaShanah begins a 10 day period of reflection and repentance known as the Days of Awe. It is a time to honestly examine our lives over the past year and renew our commitment to the highest ideals.

*For every service throughout this Guide, the Rabbi listed denotes who is speaking.*

## Erev Rosh HaShanah Services

**i** Sunday evening, September 29, Glazer Campus

|           |                    |           |  |
|-----------|--------------------|-----------|--|
| 4:30 p.m. | Family             | Piness    | Rabbi Eshel<br>Cantor Peicott<br>Jason Mesches |
| 5:00 p.m. | Adult Open Seating | Sanctuary | Rabbi Leder<br>Cantor Gurney                   |
| 8:00 p.m. | Adult Reserved     | Sanctuary | Rabbi Leder<br>Cantor Gurney<br>Cantor Peicott |



## Rosh HaShanah Day Services

**i** Monday, September 30, Glazer Campus

|            |                       |                |  |
|------------|-----------------------|----------------|--|
| 8:45 a.m.  | Adult<br>Open Seating | Sanctuary      | Rabbi Eshel<br>Rabbi Nanus<br>Rabbi Shapiro<br>Cantor Gurney |
| 9:00 a.m.  | Nursery School        | Sports Complex | Rabbi Leder<br>Jason Mesches                                 |
| 9:00 a.m.  | Family<br>Grades K-2  | Piness         | Rabbi Nickerson<br>Cantor Peicott                            |
| 10:30 a.m. | Koleinu               | Piness         | Rabbi Nickerson<br>Cantor Peicott                            |
| 11:30 a.m. | Adult Reserved        | Sanctuary      | Rabbi Eshel<br>Rabbi Nanus<br>Rabbi Shapiro<br>Cantor Gurney |
| 2:30 p.m.  | Family<br>Grades 3-5  | Sanctuary      | Rabbi Nickerson<br>Cantor Peicott<br>Jason Mesches           |

- Bagels with the clergy from 8:00 – 8:30 a.m. – Come early and schmooze!

# Tashlich

We write down our sins and dissolve them in moving waters in this ritual casting off of our transgressions at the beginning of the new year.

## Tashlich in the Courtyard

📅 Monday, September 30, all day, Mitchell Promenade

### Rabbi Nanus and Cantor Peicott

Before or after any service, we invite you and your family to visit the *Tashlich* Fountains, take a moment of reflection, then write down your sins and symbolically dissolve them in the running water.

## Paddle Boarding and Prayer


📅 Sunday, October 6, 9:30 a.m.

▶ Malibu, *details provided upon registration*

### Rabbi Nickerson

At this time of heightened reflection and self-assessment, join Rabbi Joel Nickerson for some stand-up paddle boarding and prayer to welcome in the new year and experience an alternative to the traditional Tashlich ritual. We'll paddle board in the calm ocean waters off of Malibu and engage in a brief prayer service on the water. We'll also have time to paddle along the coast at our own pace. No prior paddle boarding experience necessary (though it does require some core strength and balancing skills). Cost is \$40.

📍 RSVP at [holydays.wbtla.org](https://holydays.wbtla.org)



"My earliest memory at Wilshire Boulevard Temple is going to Sunday School. I grew up really loving being around Wilshire Boulevard Temple, watching it grow, seeing all the changes. I am thrilled that I can be a member. My children are members. My grandchildren are members and so is my new great grandbaby." -Joyce Powell, *congregant*

## Second-Day Rosh HaShanah Day Service

📅 Tuesday, October 1, 10 a.m., Irmas Campus

### Rabbi Nanus, Cantors Gurney and Peicott

Rosh HaShanah continues in a more intimate setting, where we connect in song, prayer, study, and discussion. Please join us for lunch at 12:30 in the courtyard following the service.



# Shabbat Shuvah

## Shabbat Shuvah: The Shabbat “Between”

Shabbat Shuvah highlights the ethical teachings of the Torah as we prepare for atonement on Yom Kippur.

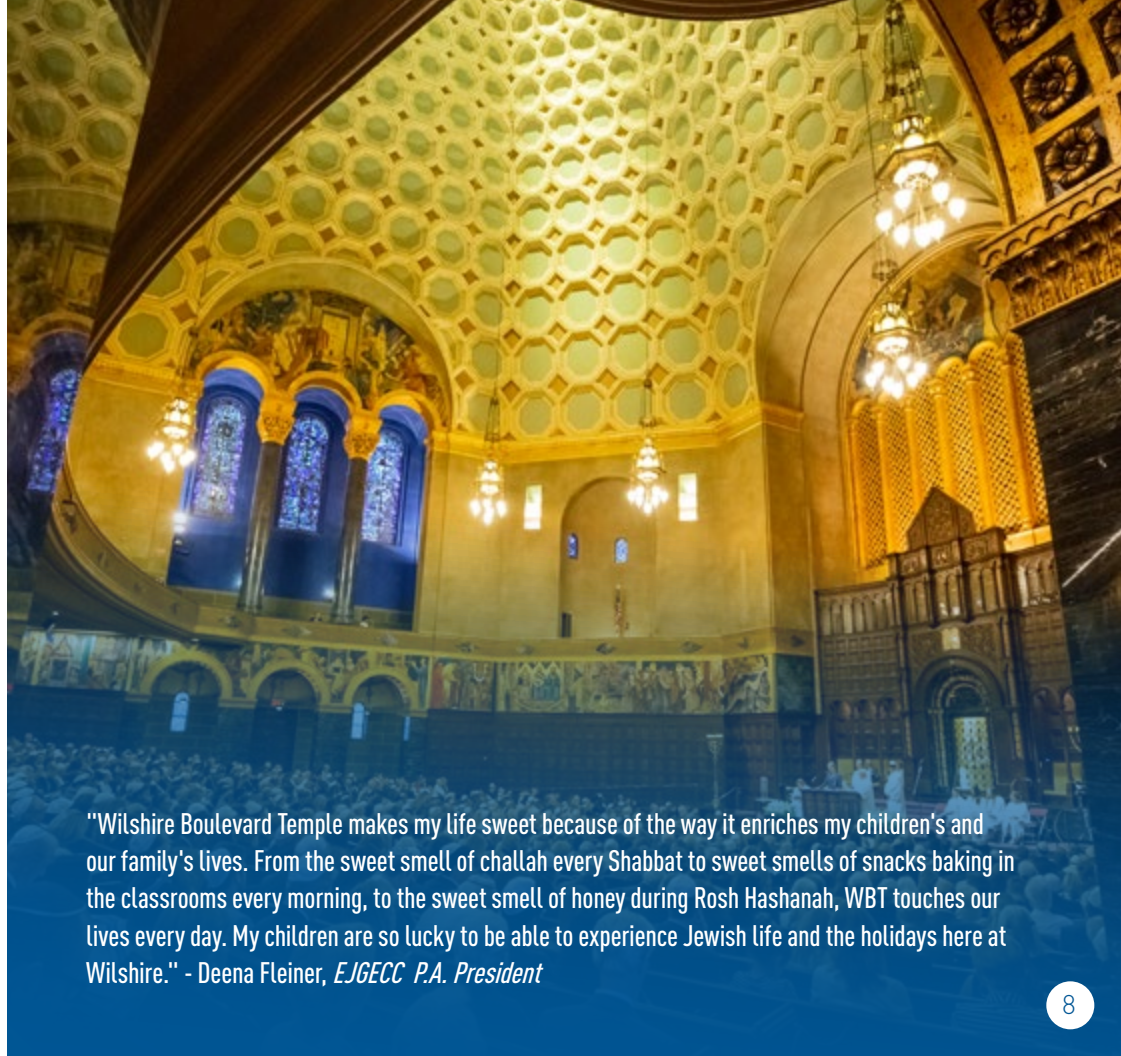
### Services

📅 Saturday,  
October 5, 10 a.m.

**Glazer Campus**  
**Rabbi Nickerson**  
**and Cantor Gurney**

📅 Saturday,  
October 5, 10 a.m.

**Irmas Campus**  
**Rabbi Shapiro**  
**and Cantor Peicott**



"Wilshire Boulevard Temple makes my life sweet because of the way it enriches my children's and our family's lives. From the sweet smell of challah every Shabbat to sweet smells of snacks baking in the classrooms every morning, to the sweet smell of honey during Rosh Hashanah, WBT touches our lives every day. My children are so lucky to be able to experience Jewish life and the holidays here at Wilshire." - Deena Fleiner, *EJGECC P.A. President*

# Yom Kippur

Prayer, music, repentance, and fasting contribute to the personal introspection of Yom Kippur, the Day of Atonement.

Yom Kippur observance begins with Kol Nidrei on Erev Yom Kippur and continues as a full day of services, fasting, reflection, and memory.



In addition to services in the main sanctuary, we offer the engaging, reflective and musical Koleinu services as well as age appropriate family services.

Doors will be closed 15 minutes after the Yizkor service begins and will not reopen until the service is over and *N'ilah* begins.

\*At the close of the *N'ilah* service, we invite you to bring your own shofar to participate in a huge community *Tekiah Gedolah!* Then join us for Break-the-Fast following services.



## *Kol Nidrei*

 Tuesday evening, October 8, Glazer Campus

The beautiful sound of the cello and moving refrain of "Kol Nidrei" stir our souls as we sit together engaged in contemplation and prayer. "All vows are canceled...we start anew."

|           |                    |           |                                   |
|-----------|--------------------|-----------|-----------------------------------|
| 5:00 p.m. | Adult Open Seating | Sanctuary | Rabbi Leder<br>Cantor Gurney      |
| 7:30 p.m. | Koleinu            | Piness    | Rabbi Nickerson<br>Cantor Peicott |
| 8:00 p.m. | Adult Reserved     | Sanctuary | Rabbi Leder<br>Cantor Gurney      |

## Yom Kippur Day Services

📅 Wednesday, October 9, Glazer Campus

|                     |                                     |                |  |
|---------------------|-------------------------------------|----------------|--|
| 8:45 a.m.           | Adult<br>Open Seating               | Sanctuary      | Rabbi Nickerson<br>Cantor Gurney                 |
| 9:00 a.m.           | Nursery School                      | Sports Complex | Rabbi Ben-Naim<br>Jason Mesches                  |
| 9:00 a.m.           | Family<br>Grades K-2                | Piness         | Rabbi Eshel<br>Cantor Peicott                    |
| 10:30 a.m.          | Koleinu                             | Piness         | Rabbi Eshel<br>Cantor Peicott                    |
| 11:30 a.m.          | Adult Reserved                      | Sanctuary      | Rabbi Nickerson<br>Cantor Gurney                 |
| 2:30 p.m.           | Family<br>Grades 3-5                | Piness         | Rabbi Shapiro<br>Cantor Peicott<br>Jason Mesches |
| 4:00 -<br>6:15 p.m. | Minchah/Yizkor/N'ilah*/<br>Havdalah | Sanctuary      | Rabbi Leder<br>Cantor Gurney                     |

*Children at Yizkor:* Yizkor is a somber service where mourners remember their treasured loved ones. Due to the sensitive nature of this service, we request that young children not attend. Parents and young children may watch the Yizkor service via live stream in the Early Childhood Centers Library located on the first floor.



## Yom Kippur Afternoon Programs

**1** Wednesday, October 9, Glazer Campus

The time between the end of morning services and the beginning of the *Minchah* (afternoon), *Yizkor*, *N'ilah* and *Havdalah* services on Yom Kippur afternoon presents our community with opportunities for learning, discussion and personal reflection.

### Clergy Panel: *Ask the Rabbis*

**1** 2:00 p.m., Sanctuary

An opportunity to pose your ethical, religious, and spiritual questions to our clergy and hear a variety of answers.

### Meditation Room

**1** All day, Meitus Hall, Room 202

A peaceful setting with pillows and comfy rug where you can sit, reflect, and rest, the meditation room will be open throughout the afternoon.

### Open Prayer at the Ark

**1** 1:45 p.m., Factor Chapel

Pray in silence in front of the open ark. Take time for personal reflection during the peaceful quiet of Yom Kippur afternoon.

### Hard Hat Tours of the Audrey Irmes Pavillion

**1** 2:00 p.m., Audrey and Jack Skirball Exhibit Hall

Please join us for a hard-hat tour of our new Audrey Irmes Pavilion construction site. Space is limited and we will do our best to accommodate everyone. Waiver and closed toe shoes are required prior to the tour.

### Film Screening: *Keep Quiet* (2019)

**1** 11:00 a.m. and 2:00 p.m., Stalford Hall

A riveting documentary about a rabidly anti-Semitic Hungarian politician who becomes a national leader of the far right and then discovers that he is Jewish. *Keep Quiet* depicts Csand Szegedi's struggle to embrace his new identity and confront the painful truths of his family's past, his own wrong doing, and the turbulent, sometimes ugly times we live in.





# Yizkor

*Yizkor* is a solemn service for mourners to honor and remember their deceased loved ones.

*Yizkor* is observed four times per year. On Yom Kippur, it is the service in the sanctuary immediately prior to *N'ilah*, the final service at the end of Yom Kippur before the fast is broken.

Our other *Yizkor* services will take place on the Irmas campus at 10:00 a.m. on the following 5780/2019-2020 dates:

- October 21, 2019, Sh'mini Atzeret
- April 16, 2020, Pesach
- May 30, 2020, Shavuot

These *Yizkor* services are small and include teachings from our Rabbis, uplifting music, and opportunities to share food and memories. Please join us for any or all of these meaningful moments to remember your loved ones and to connect with other congregants who are remembering their families as well.



## REMEMBERING THOSE WHO CAME BEFORE US

Temple members commemorate loved ones by making charitable gifts in their honor and by adding plaques in their names to our beautiful Memorial Wall. Located in the Temple Sanctuary, the elegant and luminous Memorial Wall was designed by Los Angeles artist Lita Albuquerque and installed in 2013.

In accordance with Jewish tradition, we honor the memories of those who have passed away when the *Kaddish* prayer is recited at worship services. We mark the memories of these loved ones by illuminating their plaques during *yahrzeit* (the anniversary of their deaths), and illuminating all plaques at *Yizkor* services on Yom Kippur, Sh'mini Atzeret, Pesach, and Shavuot.

By memorializing the names of our deceased loved ones, we express our gratitude for the gifts of their precious lives—and the hope that their spirits will continue to inspire us.

For more information, contact Cristina Mauro at [cmauro@wbtl.org](mailto:cmauro@wbtl.org) or (213) 835-2142.



# Child Care Programs

We welcome your children for a full day of holiday experiences and fun while you are in services.

## Child Care (3 Months to Age 5)

### Rosh HaShanah Day

📅 Monday, September 30  
8:30 a.m. - 2:00 p.m.

### Yom Kippur Day

📅 Wednesday, October 9  
8:30 a.m. - 2:00 p.m.

► Glazer Campus Nursery School Classroom

Teachers from both the Glazer and Mann Early Childhood Centers will be working together to create a meaningful day for your children. We will provide a healthy lunch and snack depending upon the time of your service. Please let us know of any allergies your children may have. Cost is \$18 per child, per day. For more information, please contact Sydney Seehoff at [sseehoff@wbtl.org](mailto:sseehoff@wbtl.org).

📞 **RSVP required at [wbtl.org/hhd-childcare](http://wbtl.org/hhd-childcare)**

## Child Care (Ages 6-8)

### Rosh HaShanah Day

📅 Monday, September 30  
8:30 a.m. - 2:00 p.m.

### Yom Kippur Day

📅 Wednesday, October 9  
8:30 a.m. - 2:00 p.m.

► Glazer Campus Brawerman Classroom

Join Admissions Director Chris Donohoe and an amazing team from Brawerman East who will be working to create meaningful High Holy Day experiences for your children. A healthy lunch or snack will be provided, depending on the time of your service. Please let us know of any allergies your children may have. Cost is \$18 per child, per day.

For more information, please contact Erin Jacobs at [ejacobs@brawerman.org](mailto:ejacobs@brawerman.org).

📞 **RSVP required at [wbtl.org/hhd-childcare](http://wbtl.org/hhd-childcare)**



## Children and Family Services

### Erev Rosh HaShanah Sunday, September 29

🕒 4:30 p.m. Family Service  
(for children of all ages)

### Rosh HaShanah Monday, September 30

🕒 9:00 a.m. Nursery  
🕒 9:00 a.m. Family K-2  
🕒 2:30 p.m. Family Grades 3-5

### Yom Kippur Wednesday, October 9

🕒 9:00 a.m. Nursery  
🕒 9:00 a.m. Family K-2  
🕒 2:30 p.m. Family Grades 3-5

🕒 Glazer Campus - Pines Auditorium  
🕒 Glazer Campus - Sanctuary  
🕒 Glazer Campus - Sports Complex

## Programming Extravaganza for Children Ages 6-10: A Special Spiritual Experience

### Kol Nidrei

📅 Tuesday, October 8, 4:45 - 7:45 p.m.,  
▶ Glazer Campus Rooftop Athletics Complex

Bring your children for a fun, educational, and interactive experience! We'll feed them, teach them, and have them discover their own spiritual experience focusing on the meaning of the holidays and Judaism.

For more information, contact Erin Jacobs at [ejacobs@browman.org](mailto:ejacobs@browman.org) or (213) 835-2170. Food will be provided.

### 📞 **RSVP at [wbtla.org/hhd-childcare](http://wbtla.org/hhd-childcare)**

Reservations are required by Monday, September 30

\*Child Care and Programming Extravaganza are designed to support adults who attend adult services at our Glazer Campus. Due to limited classroom space, we kindly request that adults do not participate or stay in Child Care rooms. Register your child(ren) in advance to guarantee space(s).

### What's Included:

- Activities
- Food
- Crafts
- Music
- Experienced Professionals

### What you need to do:

- Every child must be registered
- Inform us about food allergies
- Pre-payment of \$18 per child, per day





# Sukkot

Sukkot, which means “booths” or “huts” is a celebration of Thanksgiving for the fall harvest as well as the commemoration of the 40 years the Israelites wandered in the desert after Sinai.

Children in our schools (Browman Elementary School, Mann and Glazer Early Childhood Centers, and Religious School) celebrate Sukkot with special activities and celebrations during regular school hours.

## Celebrate the Harvest at our Food Pantries

- 📅 Sunday, October 13
- 📅 Sunday, October 20
  - ▶ 7:45–9:30 a.m. • Karsh Center, Glazer Campus
  - ▶ 9:00–11:30 a.m. • The People Concern  
(503 Olympic Blvd., Santa Monica)

As we celebrate the fall harvest during Sukkot, we are reminded of the commandment: “Leave the corners of your fields for the hungry.” So we gather at our Food Pantries to help feed those in need.

- 📞 RSVP to Elizabeth Green at  
[elizabeth@karshcenter.org](mailto:elizabeth@karshcenter.org)



## A Taste of Sukkot

- 📅 Shabbat Sukkot, Friday, October 18,  
6:00 p.m., Irmas Campus

Join us for a delightful musical Shabbat service followed by a Mediterranean feast in the Sukkah.

- 📞 RSVP at [holydays.wbtla.org](http://holydays.wbtla.org)

## Sukkot Yizkor (Memorial Service)

- 📅 Monday, October 21, 9:30 a.m.,  
Irmas Campus

Rabbi Nanus and Cantor Peicott will lead a spiritual Holiday and *Yizkor* Service, followed by a light brunch in the Sukkah.

- 📞 RSVP to [cantorsoffice@wbtla.org](mailto:cantorsoffice@wbtla.org)

# Simchat Torah

On Simchat Torah we joyfully commemorate the completion of our annual Torah reading cycle by unrolling the Torah to read the last verse of Deuteronomy and begin anew with the first verse of Genesis.

📅 Monday, October 21, Glazer Campus

- ▶ 4:30 p.m. • Torah for Tots Celebration  
(families with children under 6)
- ▶ 5:30 p.m. • All Wilshire Boulevard Temple Dinner
- ▶ 6:30 p.m. • Dancing with the Torah

Join us as we celebrate the gift of Torah with food, drinks, music and dancing with your Wilshire Boulevard community.

📍 RSVP at [holydays.wbtla.org](https://holydays.wbtla.org)



## THE TEMPLE FUND

### WHY SHOULD I GIVE?

Meaningful contributions beyond your own membership to the Temple Fund annual campaign support vital aspects of Wilshire Boulevard Temple and ensure that membership at Wilshire Boulevard Temple is available to **anyone** with a desire to be part of our community. Last year, donations made a significant difference to more than **800 families**, our community stronger and more vital because of their participation and the vision of donors.

The Temple Fund supports:

- Membership Assistance
- Comprehensive state-of-the-art security
- Special events and programs
- Religious School scholarships and youth programs
- Torah study and informal Jewish learning
- World renowned music and cultural performances
- Interfaith activities

This year when you ask yourself, "why should I give?" - think about what the Temple means to you and your family, the impact you will make, the lives you will touch, and the community you will inspire by giving.

For more information, visit  
[wbtla.org/temple-fund](https://wbtla.org/temple-fund) or contact  
Cheri Lauterbach at  
[clauterbach@wbtla.org](mailto:clauterbach@wbtla.org) or (213) 835-2135



# Koleinu

## Koleinu Services

### Rosh HaShanah morning

📅 September 30, 10:30 a.m.

### Kol Nidrei

📅 October 8, 7:30 p.m.

### Yom Kippur morning

📅 October 9, 10:30 a.m.

Connect, reflect and be inspired at Koleinu; a new prayer experience at Wilshire Boulevard Temple. If you loved our Nefesh services, you'll want to check out Koleinu!

Led by Rabbi Joel Nickerson and Cantor Lisa Peicott, along with an extraordinary band of musicians, this engaging, reflective, and musical High Holy Day service is designed for adults and families with children above the age of 13.

Join us to explore the themes of the *Yamim Noraim* (Days of Awe) with thoughtful discussion, meaningful teachings, and uplifting musical prayer.

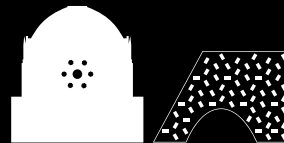
For more information, contact [cantorsoffice@wbtl.org](mailto:cantorsoffice@wbtl.org).



We hope you will also join our Koleinu services the first Friday of each month at the Glazer campus at 7 p.m. as we welcome in Shabbat with music, prayer and community. Our other Koleinu services will take place on the following 5780/2019-2020 dates:

- |                    |                 |
|--------------------|-----------------|
| • October 4, 2019  | • March 6, 2020 |
| • November 1, 2019 | • April 3, 2020 |
| • December 6, 2019 | • May 1, 2020   |
| • January 3, 2020  | • June 5, 2020  |
| • February 7, 2020 |                 |





AUDREY IRMES PAVILION  
AT WILSHIRE BOULEVARD TEMPLE

## AN INSPIRING PLACE TO GATHER

The Audrey Irmes Pavilion is the most exciting statement and commitment we've made to the community since our sanctuary opened in 1929.

The building's exterior is so extraordinary that no one will be able to resist entering to discover the remarkable things happening inside. A banquet hall, chapel and sanctuary view terrace, rooftop terrace and sunken garden, meeting rooms, performance space, and professional catering kitchen. In this most modern of buildings, the Annenberg Foundation will also launch the Annenberg Center for Purposeful Aging.

We are very proud that Wilshire Boulevard Temple will be a vital part of the cultural, religious, and socially conscious conversation that is defining 21st Century Los Angeles.

For more information, contact Jamie Geller at [jgeller@wbtl.org](mailto:jgeller@wbtl.org) or (213) 388-2401.






## Parking Information

There are many options for transportation and parking for the High Holy Days.

### Temple's Parking Structure

**RP** The Temple's parking structure is available to those who receive reserved parking passes. This includes members of our Temple leadership, volunteer ushers for High Holy Day services, and congregants who participate in The Temple Fund campaign with a generous gift of \$1,800 or more. To become a Temple Fund member, please contact Cheri Lauterbach at clauterbach@wbtl.org or (213) 835-2135.

### Disabled Person Parking - New

 Parking for people with disabilities will be in our Temple Parking Structure. The Temple will not be issuing special passes. To park in the disabled lot, show your state issued placard or license plate and your High Holy Day tickets for every person in your car.

### Parking Lots Nearby

There are parking lots near the Temple with limited capacity.

**We do not have any special arrangements for validations.**

All are electronic payment, either in the building lobby or at the exit.

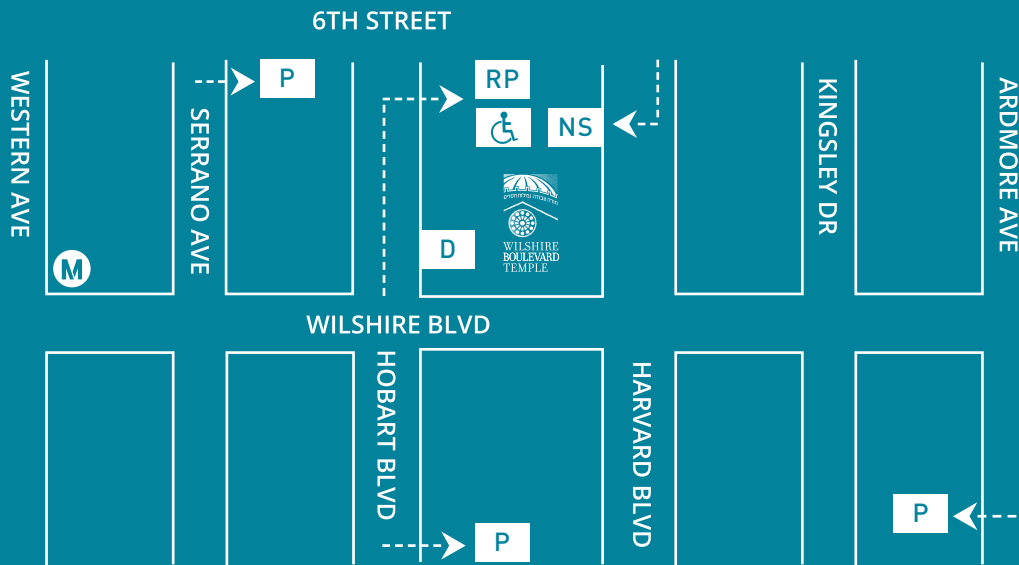
\* Due to limited parking, we encourage you to consider a ride service such as Lyft or Uber. We have a designated drop off and pick up point on Hobart between Wilshire and 6th Street. The Metro purple line stop at Wilshire/Western is another option with a 5 minute walk.

## Become a Volunteer Usher

Thousands of congregants will worship with us and we need your help as an usher for High Holy Day services. Our clergy and staff rely on our valued volunteers to help ensure a positive experience for our congregation. Ushers serve as ambassadors by welcoming people, guiding congregants to their seats, helping to maintain the decorum of services, and answering various questions.

In appreciation, we provide you with one parking pass for our parking structure on Hobart Boulevard.

If you have additional questions regarding volunteering as an usher for the High Holy Days, please e-mail Edna Gonzalez at ednag@wbtl.org or call (213) 835-2129.



**Reserved Parking**  
Must have Temple-issued Reserved Parking Pass, enter on Hobart.



**Disabled Person Parking**  
Must have state issued disabled parking placard or license plate, enter on Hobart.



**Metro Purple Line**



**Drop-off/pick-up spot for passengers**



**Public Parking Facilities**  
Located near the temple.  
We do not have any special arrangements for validations.



**Nursery School Drop-Off**

# 5780/2019 High Holy Days Calendar

Dates, times, and events subject to change

## S'lichot

Saturday, September 21

- G 7:00 p.m. Service  
with other synagogues

## Erev Rosh HaShanah

Sunday, September 29

- G 4:30 p.m. Family
- G 5:00 p.m. Adult- OS
- G 8:00 p.m. Adult- R

## Rosh HaShanah

Monday, September 30

- G 8:45 a.m. Adult- OS
- G 9:00 a.m. Nursery
- G 9:00 a.m. Family (K-2)
- G 9:30 a.m. Food Games (N-2)
- G 10:30 a.m. Koleinu
- G 11:30 a.m. Adult- R
- G 2:30 p.m. Family 3-5

## SEPTEMBER

| SUN                         | MON                    | TUE | WED | THU | FRI | SAT            |
|-----------------------------|------------------------|-----|-----|-----|-----|----------------|
| 15                          | 16                     | 17  | 18  | 19  | 20  | 21<br>S'LICHOT |
| 22                          | 23                     | 24  | 25  | 26  | 27  | 28             |
| 29<br>EREV ROSH<br>HASHANAH | 30<br>ROSH<br>HASHANAH |     |     |     |     |                |

## Tashlich

Monday, September 30

- G All Day Courtyard

## Second-Day Rosh HaShanah

Tuesday, October 1

- I 10:00 a.m. Service
- I 12:30 p.m. Lunch

## Shabbat Shuvah

Saturday, October 5

- G 10:00 a.m. Service

## Kol Nidrei

Tuesday, October 8

- G 5:00 p.m. Adult- OS
- G 7:30 p.m. Koleinu- OS
- G 8:00 p.m. Adult- R

G Glazer Campus - Piness Auditorium

G Glazer Campus - Sanctuary

G Glazer Campus - Sports Complex

G Glazer Campus - ECC Library

I Irmas Campus

G Glazer Campus

OS Open Seating

R Reserved Seating

# 5780/2019 High Holy Days Calendar

Dates, times, and events subject to change

## Yom Kippur

Wednesday, October 9

ALL DAY: Meditation room

8:45 a.m. Adult-

9:00 a.m. Nursery

9:00 a.m. Family K-2

10:30 a.m. Koleinu

11:00 a.m. Movie Screening

11:30 a.m. Adult-

2:00 p.m. Programming

2:30 p.m. Family 3-5

6:15 p.m. Break-the-Fast

## Sukkot

Sunday, October 13

12:15 p.m. Religious School Sukkot Picnic

Wednesday, October 16

5:30 p.m. Religious School Sukkot Picnic

5:00 p.m. EJGECC Sukkot Picnic

Thursday, October 17

5:00 p.m. BESE Sukkot Picnic

5:00 p.m. MFECC Sukkot Picnic

## OCTOBER

| SUN              | MON                          | TUE                                 | WED                 | THU              | FRI                         | SAT                         |
|------------------|------------------------------|-------------------------------------|---------------------|------------------|-----------------------------|-----------------------------|
|                  |                              | 1<br>SECOND-DAY<br>ROSH<br>HASHANAH | 2                   | 3                | 4                           | 5<br>SHABBAT<br>SHUVAH      |
| 6                | 7                            | 8<br><br>KOL NIDREI                 | 9<br><br>YOM KIPPUR | 10               | 11                          | 12                          |
| 13<br><br>SUKKOT | 14<br><br>SUKKOT             | 15<br><br>SUKKOT                    | 16<br><br>SUKKOT    | 17<br><br>SUKKOT | 18<br><br>SUKKOT<br>SHABBAT | 19<br><br>SUKKOT<br>SHABBAT |
| 20<br><br>SUKKOT | 21<br><br>SH'MINI<br>ATZERET | 22<br><br>SIMCHAT<br>TORAH          | 23                  | 24               | 25                          | 26                          |
| 27               | 28                           | 29                                  | 30                  | 31               |                             |                             |

## Sukkot Shabbat

Friday, October 18

6:00 p.m. Service

6:00 p.m. A Taste of Sukkot Shabbat

## Sukkot Shabbat

Saturday, October 19

10:00 a.m. Service

10:00 a.m. Service

## Sh'mini Atzeret

Monday, October 21

9:30 a.m. *Yizkor*

## Simchat Torah

Tuesday, October 22

4:30 p.m. Torah for Tots

5:30 p.m. Dinner

6:30 p.m. Dancing with the Torah

Glazer Campus - Piness Auditorium

Glazer Campus - Sanctuary

Glazer Campus - Sports Complex

Glazer Campus - ECC Library

Irmas Campus

Glazer Campus

Open Seating

Reserved Seating



## Other Holidays

These are the other major holidays and observances for the 5780/2019-2020.

### Chanukah

📅 December 22-30

### Purim

📅 March 9-10

### Pesach

📅 April 8-16

### Yom HaShoah

📅 May 20-21

### Yom HaAtzma'ut

📅 May 28-29

### Shavuot

📅 May 28-30

## We're Here All Year!

The High Holy Days are a special time for all of us at Wilshire Boulevard Temple. There are so many ways you can continue to connect with us and each other all year round.

Join us at our regular Friday night services at either campus or for our many holiday programs.



Join the Women of Wilshire or Men of Wilshire with their abundant selection of programs.



Study with one of the Rabbis multiple times per month.



Attend one or more of dozens of adult programs throughout the year.



Attend our family programming such as Shabbat Family Jam, Family Camp, and many others.



Bring your kids to WBTY, WBTY Deux, WBTY Junior, or Wednesday Night Programming for Teens.



Volunteer at the Karsh Center or at one of our food pantries.



Travel with us on a fishing trip, golf trip, a camping trip, a trip to Israel, or even go to Kenya.



We'd love to see you!



WILSHIRE BOULEVARD TEMPLE

3663 Wilshire Boulevard • Los Angeles, CA 90010 • (213) 388-2401 • [wbtl.org](http://wbtl.org)