

**GENERAL SPECIFICATIONS**

**MECHANICAL ANCHORS**

- INSTALL ACCORDING TO MANUFACTURER'S INSTALLATION INSTRUCTIONS & RECOMMENDATIONS.
- INSTALL ACCORDING TO SPECIAL INSPECTION PROGRAM.
- EXPANSION ANCHORS (CONCRETE):
  - ICC / EBCO APPROVED; CONFIRM w/ FF-S-325, GROUP II, TYPE 4, CLASS 1.
  - MATERIAL: CARBON STEEL, ZINC PLATED, HOT-DIPPED GALVANIZED ACCORDING TO ASTM A 153.
  - ACCEPTABLE ANCHORS: STRONG BOLT 2 BY SIMPSON STRONG TIE COMPANY, INC. OR APPROVED EQUAL.
- IF REINFORCEMENT IS ENCOUNTERED DURING DRILLING, ABANDON & SHIFT HOLE LOCATION TO AVOID REINFORCEMENT; PROVIDE MINIMUM 2 ANCHOR DIAMETERS OR 1 INCH, WHICHEVER IS LARGER, OF SOUND CONCRETE BETWEEN ANCHOR & ABANDONED HOLE. FILL ABANDON HOLE WITH NON-SHRINK GROUT. IF ANCHOR MAY NOT BE SHIFTED AS NOTED ABOVE, CONTACT ENGINEER TO DETERMINE COURSE OF ACTION.

**SPECIAL INSPECTIONS**

- AN INDEPENDENT TESTING AGENCY & SPECIAL INSPECTORS WILL BE RETAINED BY THE OWNER TO PERFORM THE FOLLOWING TESTS AND INSPECTIONS. PROVIDE ACCESS & FURNISH SAMPLES TO THE AGENCY AS REQUIRED.

REQUIRED SPECIAL INSPECTIONS (TABLE 1705.2)			
VERIFICATION & INSPECTION	CONTINUOUS	PERIODIC	REFERENCED STANDARD
INSPECTION OF HIGH-STRENGTH BOLTING			
PRETENSION & SLIP-CRITICAL JOINTS USING TURNOFFNUT WITHOUT MATCHMAKING OR CALIBRATED WRENCH METHODS OF INSTALLATION	X		AISC 360, SECTION M2.5

- IF INITIAL TESTS OR INSPECTIONS MADE BY THE OWNER'S TESTING AGENCY REVEAL ANY PORTION OF THE WORK DOES NOT COMPLY WITH THE CONTRACT DOCUMENTS, ADDITIONAL TESTS, INSPECTIONS, & NECESSARY REPAIRS WILL BE MADE AT CONTRACTOR'S EXPENSE.

**ELECTRICAL**

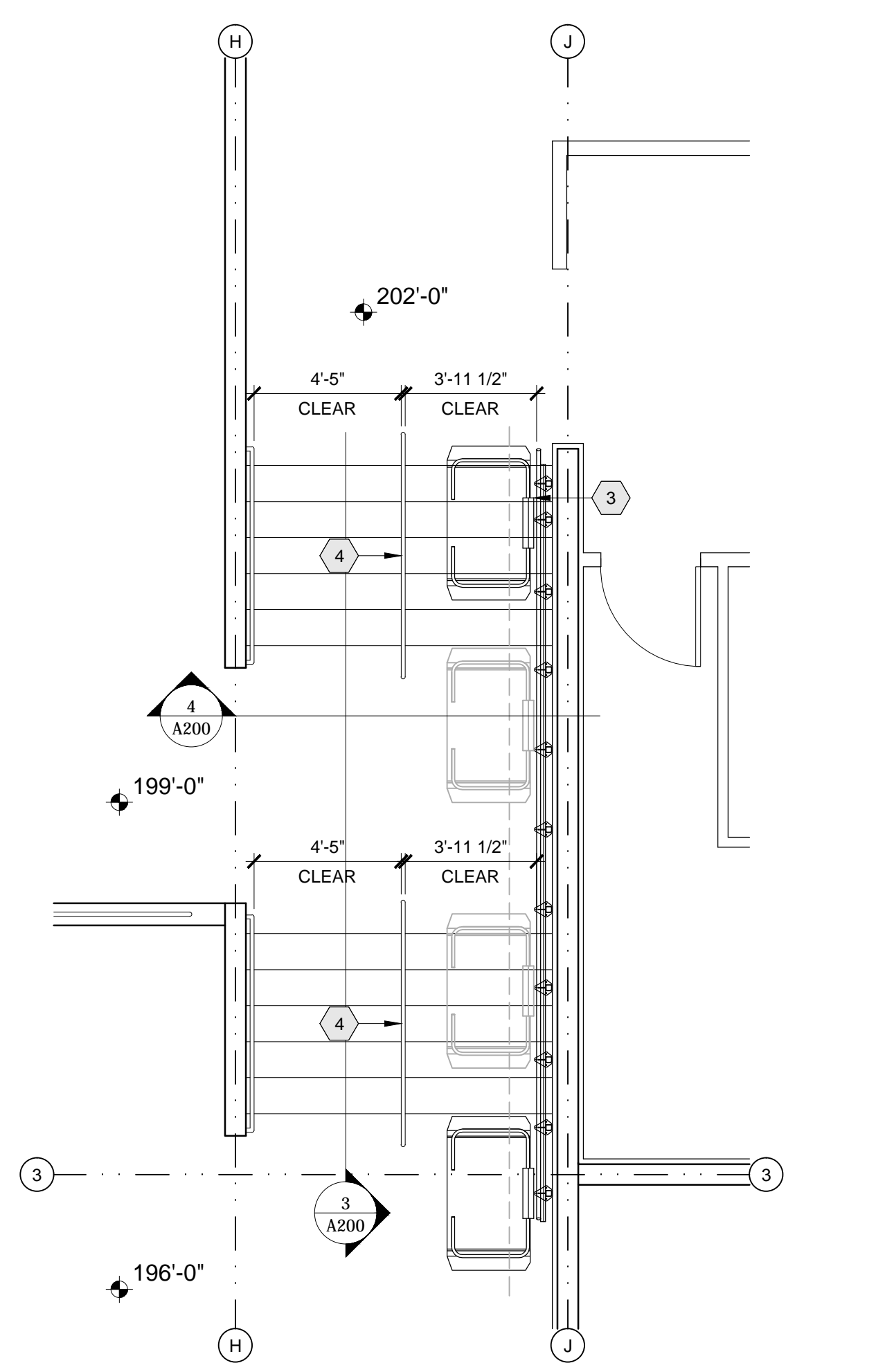
- ELECTRICAL EQUIPMENT AND WIRING TO COMPLY w/ NEC ANSI / NFPA 70.
- ELECTRICAL CONTRACTOR TO CONFIRM LOCATION & CAPACITY OF LOCAL POWER SUPPLY.
- PROVIDE SINGLE-PHASE, DEDICATED CIRCUIT THROUGH A FUSED DISCONNECT. SIZE ACCORDING TO MANUFACTURER'S SPECIFICATIONS.
- LOCATE ELECTRICAL CONNECTION BOX PER MANUFACTURER'S RECOMMENDATION.

**LIGHTING**

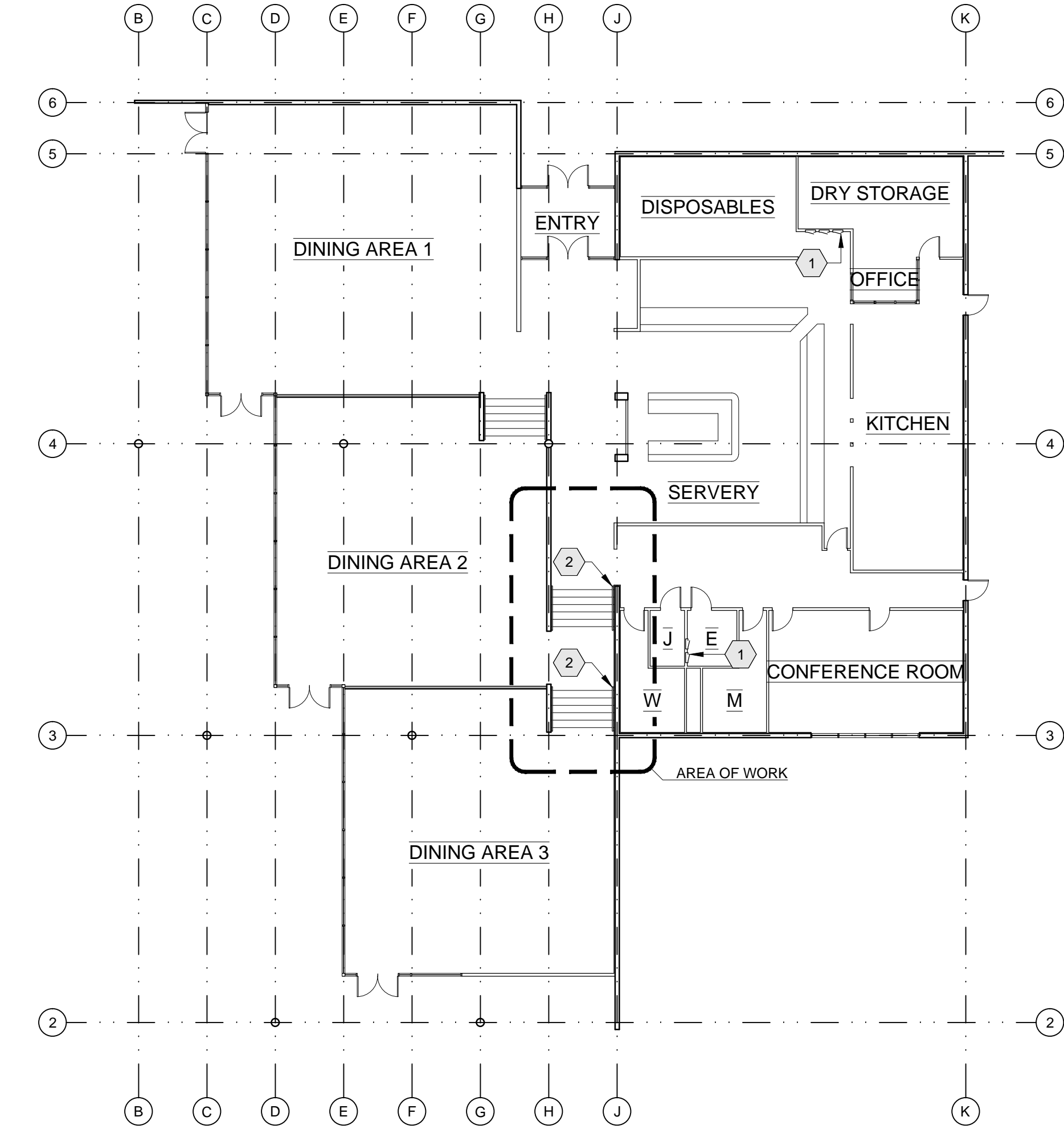
- CONTRACTOR TO ENSURE A MINIMUM OF 10 FOOT-CANDLES AT PLATFORM & LANDINGS DURING NORMAL HOURS OF OPERATION; AND 1 FOOT-CANDLE FOR EMERGENCY LIGHTING.

**EQUIPMENT**

- PLATFORM LIFTS REQUIRE STAIRS, FLOORS, & LANDINGS TO BE LEVEL, PLUMBING, & SQUARE; AND IN ACCORDANCE WITH THE SITE-SPECIFIC SHOP DRAWINGS.
- CONTRACTOR TO ENSURE ALL MINIMUM & MAXIMUM CLEARANCE AS SPECIFIED BY MANUFACTURER ARE MET.
- EQUIPMENT MUST BE INSTALLED BY A QUALIFIED TECHNICIAN IN COMPLIANCE w/ THE MANUFACTURER REQUIREMENTS.
- EQUIPMENT INSTALLATION IS TO CONFIRM w/ STANDARDS SET BY THE CONTRACT DOCUMENTS. REPORT ANY DISCREPANCIES TO OWNER'S REPRESENTATIVE AND/OR ARCHITECT.



**2 ENLARGED FLOOR PLAN**  
SCALE: 1/4" = 1'-0"



**1 OVERALL FLOOR PLAN**  
SCALE: 1/16" = 1'-0"

**KEY NOTES**

- LOCATIONS OF ELECTRICAL PANELS. ELECTRICIAN TO VERIFY PANELS HAVE CAPACITY FOR NEW CHAIR LIFT EQUIPMENT.
- REMOVE EXISTING HANDRAILS AS INDICATED. PATCH WALL FOR LIKE NEW APPEARANCE.
- INSTALL NEW MULTI-STOP STRAIGHT INCLINED PLATFORM LIFT w/ INTEGRATED HANDRAIL MOUNTED TO MANUFACTURER'S SUPPORT POST.
- INSTALL NEW 1 1/2" STEEL PIPE HANDRAIL AS INDICATED.

NOTE:  
REPORT ANY SITE DISCREPANCIES TO ARCHITECT PRIOR TO ORDERING AND/OR INSTALLATION.

**CODE SUMMARY**

**GENERAL NOTES**

- EXISTING PATH OF TRAVEL AND OVERALL AREA IS NOT EFFECTED BY THIS PROJECT.
- THE EXISTING MEANS OF EGRESS WIDTH FOR DINING AREA 3 HAS CHANGED AND IS STILL IN COMPLIANCE WITH CURRENT CODE. SEE SUMMARY BELOW FOR MORE INFORMATION.
- BUILDING IS EQUIPPED THROUGHOUT WITH AN AUTOMATIC FIRE SPRINKLER SYSTEM.

**APPLICABLE CODES**

ALL WORK TO COMPLY WITH CURRENT FEDERAL, STATE, COUNTY, CITY BUILDING & ADA CODES & REGULATIONS.

**CHAPTER 3 - USE & OCCUPANCY CLASSIFICATION**

SECTION 303.3: A2 - ASSEMBLY

**CHAPTER 10 - MEANS OF EGRESS**

TABLE 1004.1.1: OCCUPANT LOAD  
LOAD FACTOR = 15 NET SF

DINING AREA 1  
NET AREA = 1,853 SF  
# OF OCCUPANTS = 124  
REQ'D EXITS = 2

DINING AREA 2  
NET AREA = 1,598 SF  
# OF OCCUPANTS = 106  
REQ'D EXITS = 2

DINING AREA 3  
NET AREA = 1,575 SF  
# OF OCCUPANTS = 105  
REQ'D EXITS = 2

TOTAL  
NET AREA = 5,026  
# OF OCCUPANTS = 335  
REQ'D EXITS = 2

SECTION 1005: EGRESS WIDTH  
OCCUPANCY REQUIRED PROVIDED  
DINING AREA 1 124 (0.2) = 24.8" 216" DOOR

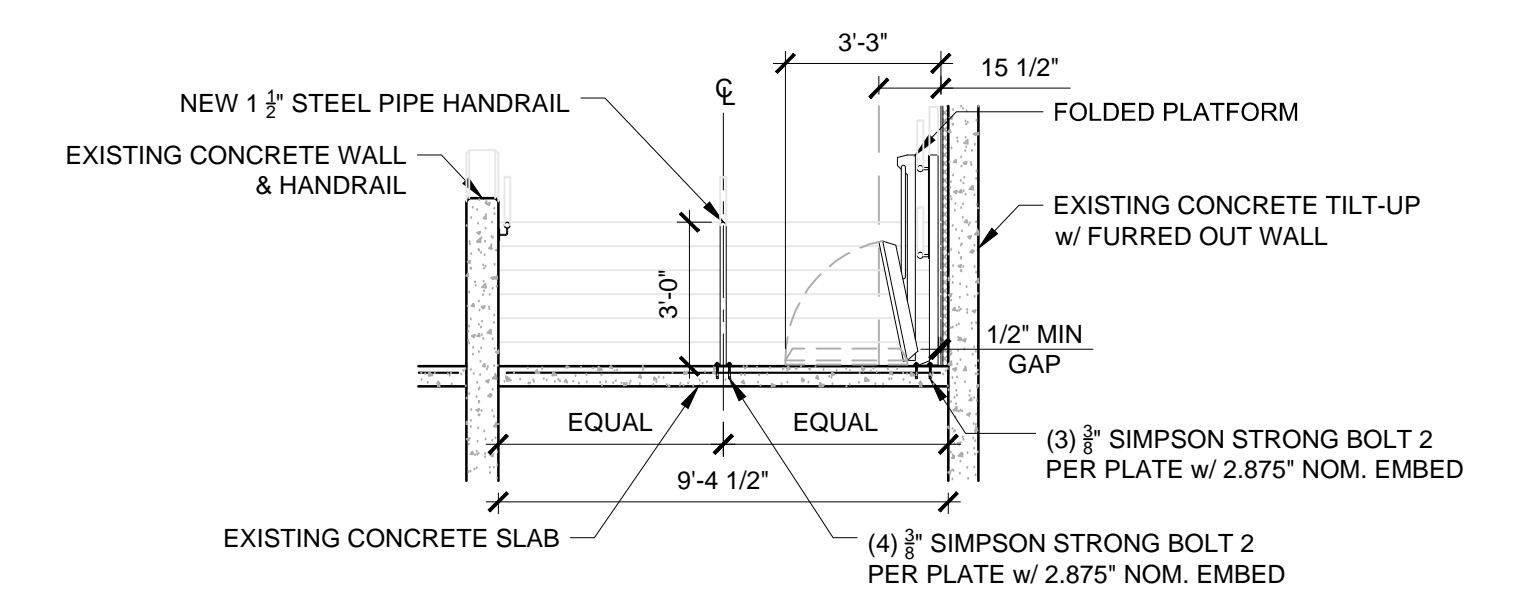
DINING AREA 2 106 (0.2) = 21.2" 72" DOOR  
106 (0.3) = 31.8" 129" STAIR

DINING AREA 3 105 (0.2) = 21" 72" DOOR  
105 (0.3) = 31.5" 53" STAIR

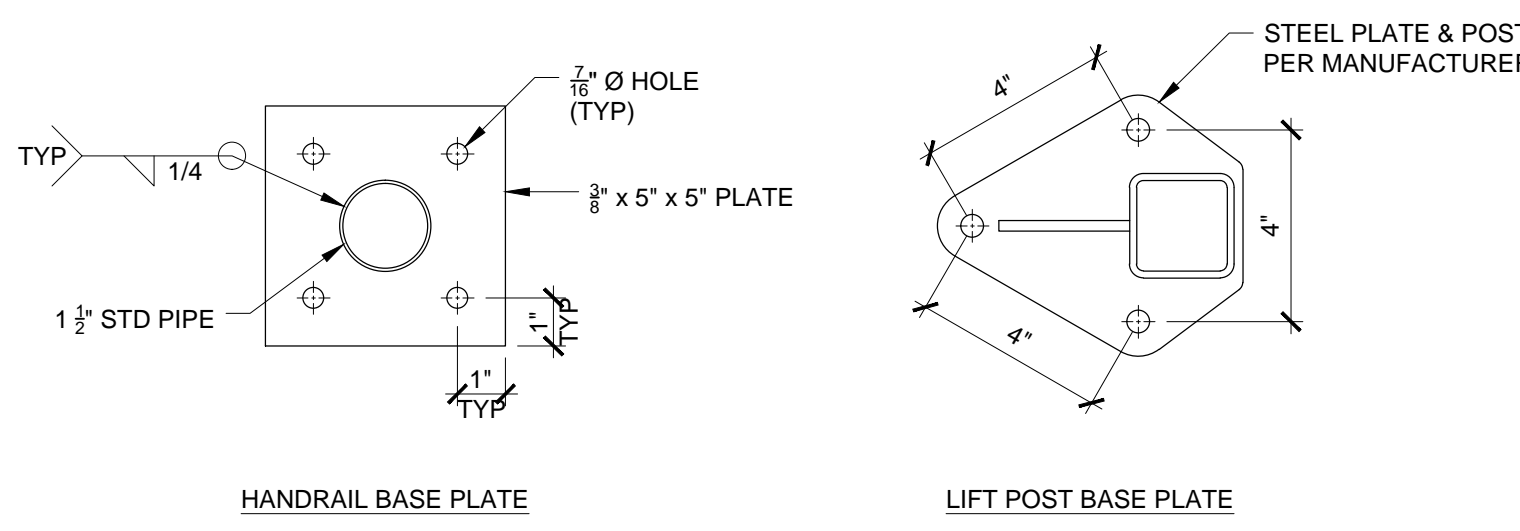
TABLE 1018.2: MINIMUM CORRIDOR WIDTH  
ANY FACILITIES NOT LISTED IN TABLE = 44"

**CHAPTER 11 - ACCESSIBILITY**

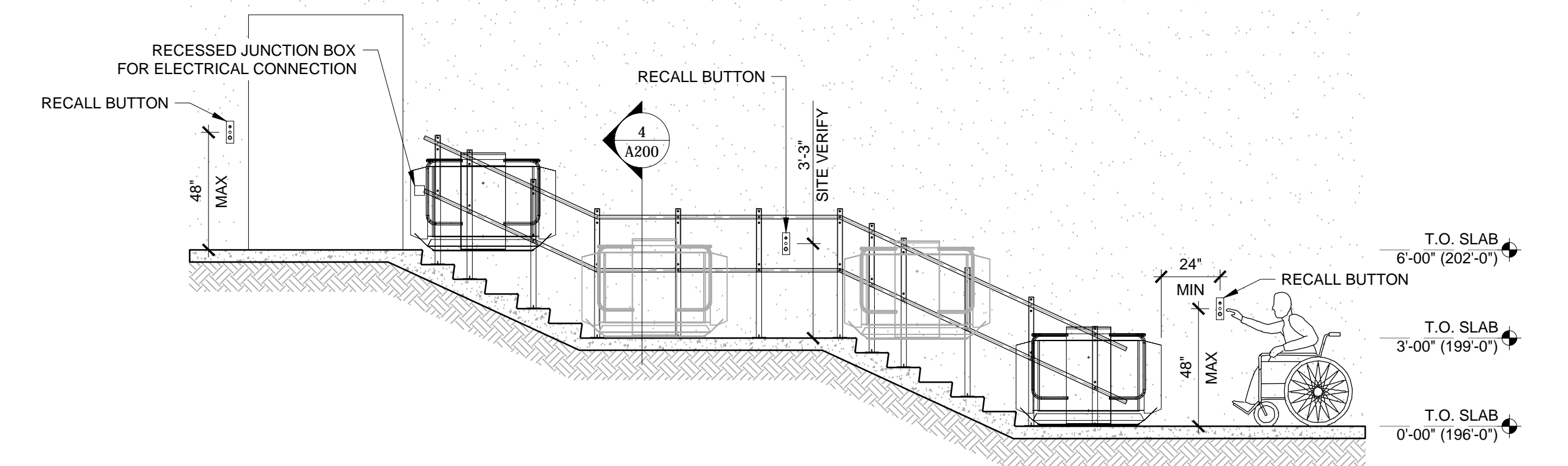
THIS DEVELOPMENT IS TO COMPLY WITH THE AMERICANS WITH DISABILITIES ACT AND THIS CHAPTER OF THE 2014 OSSC.



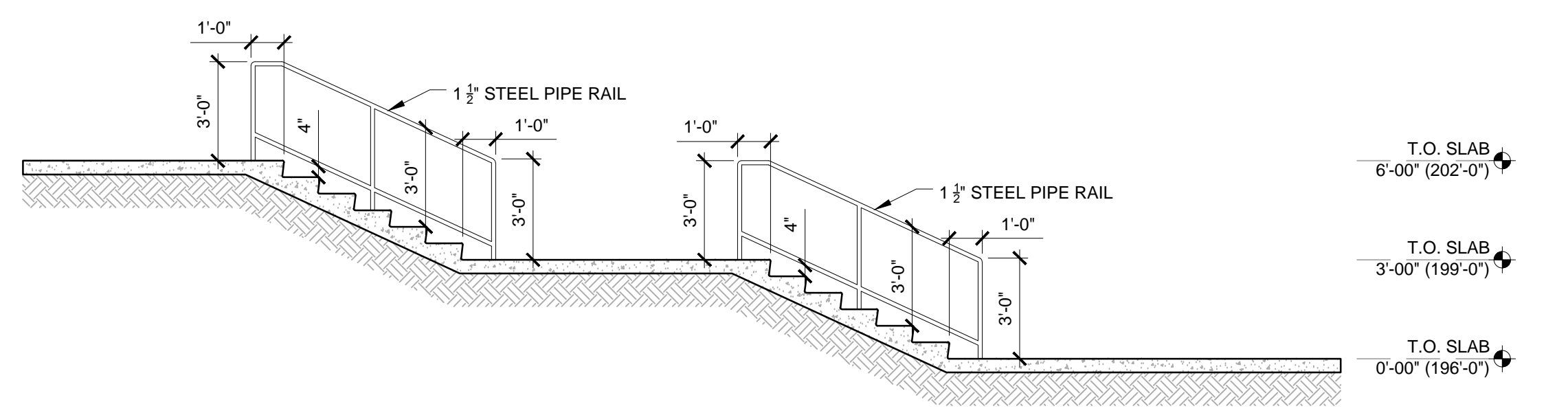
**4 SECTION**  
SCALE: 1/4" = 1'-0"



**5 BASE PLATE DETAIL**  
SCALE: 3" = 1'-0"



**3 SECTION / ELEVATION**  
SCALE: 1/4" = 1'-0"



**5 HANDRAIL ELEVATION**  
SCALE: 1/4" = 1'-0"