

STUDENT ACADEMIC OUTCOMES REPORT

November, 2013



TABLE OF CONTENTS

Introduction	1
Executive Summary	5
SPP (Special Performance Profile)	9
PSSA (Pennsylvania System of School Assessment) Data	11
Keystone Exam	26
PVAAS	28
SAT Reasoning (College Board)	35
SAT Ranking of Top 20 Schools and Comparator Schools in Pennsylvania	43
Preliminary Scholastic Assessment Test (PSAT)/National Merit Scholarship Qualifying Test (NMSQT) Data	49
American College Test (ACT) Scores	53
Advanced Placement (AP) Scores	57
Early Graduation Information	70
Post Graduation Activities	72
Analysis of College Attendance by Competitiveness	76
College Admissions Selector	80

INTRODUCTION

The 2013 Student Academic Outcomes Report is a collection of data used as indicators of student success. To the extent possible, the Student Outcomes Report reflects trend data so these trends can be analyzed, addressed, and/or celebrated accordingly. It is important to note that data reflecting any single year is not indicative of a trend. It should be expected that there will be slight fluctuations in the data from year to year. Only through an analysis of a collection of results over time can valid conclusions be drawn regarding changes in student performance.

As a recent feature, the Student Outcomes Report also includes data from 15 Pennsylvania Comparator School Districts. These 15 school districts were selected based on their high and consistent performance on the PSSA and SAT. The comparator districts include: Central Bucks, Fox Chapel, Great Valley, Hampton, Lower Merion, Lower Moreland, North Allegheny, Peters Township, Radnor, South Fayette, Tredyffrin-Easttown, Unionville-Chadds Ford, Upper Dublin, Upper St. Clair, and Wallingford-Swarthmore.

This report represents only a small portion of the data that is gathered and reported by the School District. We are required to gather and then submit various types of data in order to meet state and federal guidelines. This includes data on student attendance, discipline, and graduation rates. We also choose to gather data to assist with program planning and evaluation. The data gathered from the graduate survey falls into this category. Additionally, we receive data from a variety of sources. For example, the Department of Education provides us with a wealth of information on our PSSA results. Data is broken down, or disaggregated, by scores on each state standard, grade level, performance category, and gender and ethnic subgroups.

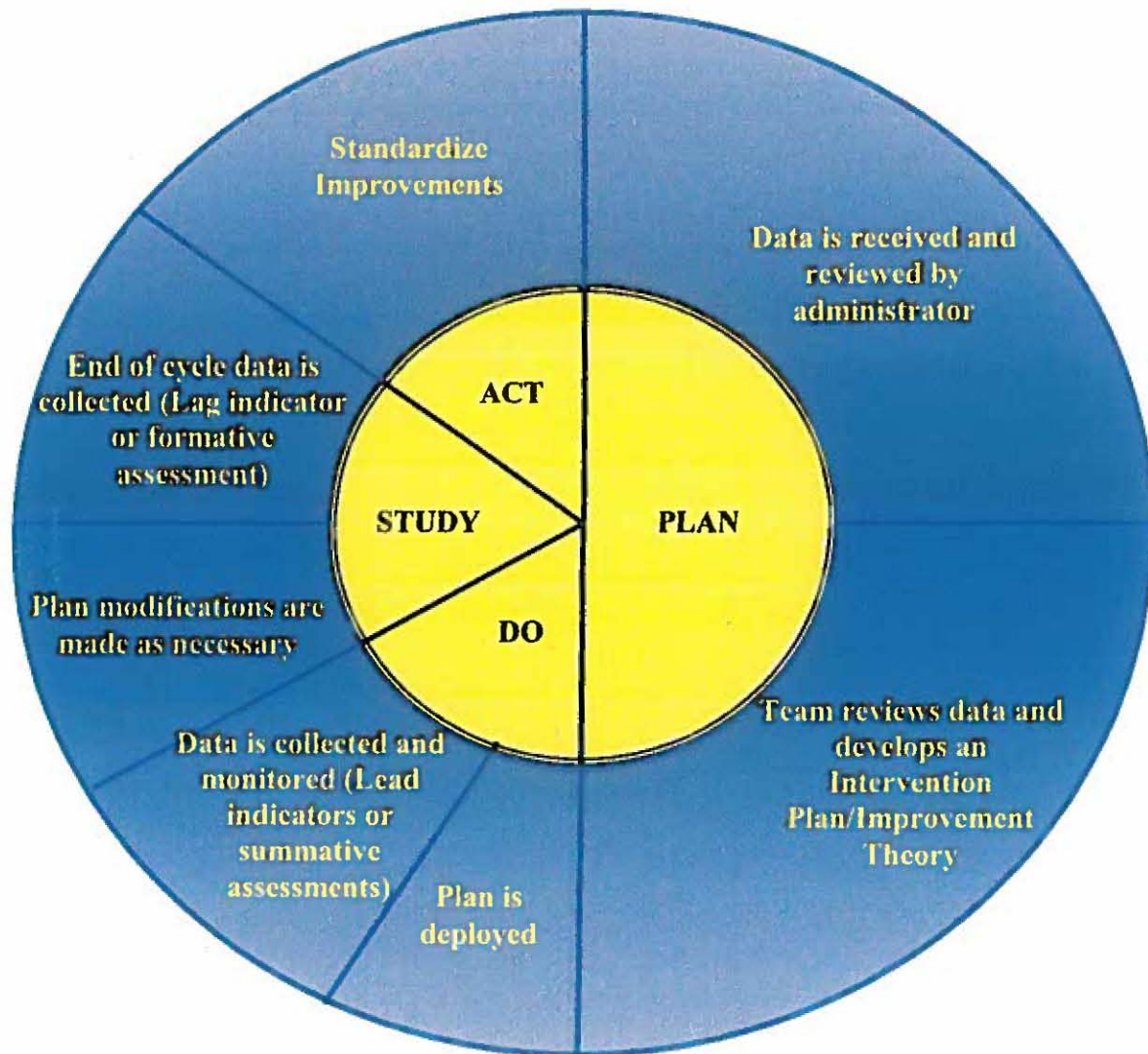
Data reporting mechanisms vary depending on the data source and its intended purpose. Some data, such as the Building School Performance Profiles, is reported publicly through our web site. Other data is shared with staff at the building level in order to assist with planning.

Data analysis is an integral component of the decision-making process and the Strategic Plan. Data for the Strategic Plan is reported on the Balanced Scorecard. Data is also used as part of the Plan, Do, Study, Act (PDSA) cycle. This cycle is detailed on the following page.

Typically, the administration uses information to develop individual, grade level, building level and district level improvement plans. The four types of plans are described below.

When data is provided to the administrator, a team of professionals is asked to review individual student achievement information. For the current 2013-2014 school year, the Superintendent is requiring that Individualized Learning Plans be developed for all students who were not proficient on the PSSA. Support may be provided in the regular classroom through differentiation or in-class remediation (Level I Support). However, it may be determined the student is in need of more

intensive support (Level II Support). In this case, in addition to regular education in-class remediation, support may also occur by specialists. Instructional Support, Strive, and the services of the reading specialist are examples of Level II interventions. If this level of support proves unsuccessful, the student may be considered for more intensive or Level III support. Frequent data is gathered during Levels I, II, and III to determine intervention effectiveness and student learning plans are modified as appropriate.



Building principals also analyze data at each grade level. If data suggests there is a concern across a particular grade level, a PDSA cycle is implemented for the entire grade. Data is monitored and the team determines if the intervention has been successful. Plans for professional development are derived from this analysis.

Building principals are also required to develop building level plans. The principal and staff review all available data in order to develop building plans. Principals have been asked to address three key factors: content, process, and motivation in their building plans. Professional development activities also emanate from these discussions.

Additionally, secondary department chairs and elementary curriculum facilitators are asked to develop departmental plans. At this level, data is collected to determine district level effectiveness. At times, major curricular revisions occur based on the data analysis. Other plans may involve minor curricular adjustments.

We use data to describe our current condition and compare that to our target conditions. When discrepancies are found, a series of interventions occur to correct the course (PDSA cycle).

EXECUTIVE SUMMARY

The data collected in the 2013 Student Outcomes Report is positive. Mt. Lebanon students continue to meet or exceed the high expectations inherent in our educational system. Thus, it appears that the School District is moving toward meeting its mission of providing the best education possible for each and every student. Below are some highlights of this report.

SPP (School Performance Profile)

- SPP is a collection of data that provides a broader perspective of student achievement in each building. Nine out of 10 buildings have a SPP above 90% with one school receiving a score in the high 80's placing us among the highest performing school districts in the State.

PSSA

- District PSSA composite scores are above 90% proficiency in Reading, Math, Science and Writing.
- Scores on all measures and at all grade levels far exceed state averages.
- Elementary scores are consistently strong, scoring well above the State average.
- Secondary scores are consistently strong, scoring well above the State averages in each tested subject area.
- Trend data indicates over 91% of third graders have demonstrated proficiency on both Reading and Math over the last 3 years.
- Trend data in 5th grade has shown increases in both Reading and Math proficiency.
- Middle School results remain strong.
- High School results remain strong. Student performance on the Keystone Exams has exceeded past performances on the PSSA. The High School continues to outperform the top schools in the region and State.
- An analysis of the composite scores with the 15 comparator districts indicates that we ranked 9th in Math and 3rd in Reading.

Keystone Exams:

- The 2011-12 school year was a year of transition from the PSSA for the high school to end-of-course Keystone Exams in Algebra 1 (administered in 8th grade) Biology, and English Literature.
- The overall proficiency rate for the 11th grade cohort in 2012-2103 (Class of 2014) in Algebra 1 was 91.5%. In comparison, the prior years' PSSA math proficiency rate was 88.1%.
- The overall proficiency rate for the 11th grade cohort in 2012-2013 (Class of 2014) in Biology was 83%. In comparison, the prior year's PSSA science proficiency rate was 73.5%.
- The overall proficiency rate for the 11th grade cohort in 2012-2013 (Class of 2014) in English Literature was 95%. In comparison, the prior year's PSSA reading proficiency rate was 92.8%.

PVAAS

- There is moderate evidence showing that the School District exceeded the standard for PA Academic Growth in grades 4-8 in Reading and significant evidence showing the School District exceeded the standard in Math.

SAT

- The SAT (College Board) Critical Reading average score of 553, the Mathematics average score of 573, and the Writing average score of 559 are significantly better than both the state and national averages. It is important to note that 93% of the class participated in this assessment.
- The SAT (Subject Test) scores illustrate that on 5 out of 8 tests, Mt. Lebanon students scored above state and national averages. For 1 out of 8 tests, scores were above the national average and slightly below the state average.

National Merit

- The graduating class of 2014 had 27 of the students, who took the PSAT, qualify as Commended or Semi-Finalist National Merit students. In comparison, the class of 2013 had 17 students, who took the PSAT, qualify as Commended or Semi-Finalist National Merit students.

ACT

- The number of students taking the ACT increased to 63% from last year of 55%.
- Scores remain significantly higher than state and national means. The average composite score was 24.9 compared to the national average of 20.9 and the Pennsylvania state average of 22.7.

Advanced Placement (AP)

- All Advanced Placement mean scores remain above 3.0 with the exception of Computer Science A which is 2.7.
- Mt. Lebanon mean scores (n=573) are at or above the national average on 17 of the 19 tests.
- The following subtests had scores at least one point higher than the national average: Art-Studio, Chemistry, English Language/Composition, English Literature/Composition, Environmental Science, and U.S. History.
- Several tests had mean scores of 4.0 and above. These include: Art-Studio, Calculus BC, Chemistry, English Language/Composition, French Language, German Language, Physics E&M, Psychology, and US History.
- Exams were taken by 371 different students, as compared to 344 in 2011-2012.
- Almost 7 out of every 10 students taking advanced placement courses at Mt. Lebanon (69%) scored at a 4 or 5, and 90% of students received a score of 3 or higher in advanced placement courses taught at Mt. Lebanon.
- Mt. Lebanon students earning scores of 3, 4 or 5 outpaced contemporaries throughout Pennsylvania and the nation; 89.2% of Mt.

Lebanon examinees scored 3, 4 or 5 compared to 68.3% in Pennsylvania and 60.8% in the nation. (Note: This statistic includes students who take an advanced placement course exam with the course not being taught at Mt. Lebanon High School.)

- For the graduating class of 2013, 46.9 % of the 12th graders scored a 3 or higher on at least one AP exam during their high school career.

Graduation Information

- The cohort graduation rate for the class of 2013 is 97.6%.
- 96.3% of the graduating class indicated that they would be attending a two or four year college program.
- The percentage of students attending the top two categories of Most Competitive and Highly Competitive colleges equals 33.5%.

Since the Student Outcomes Report data have remained consistently strong over past years, families and educators should take great pride in the performance of the Mt. Lebanon School System.

SPP (SCHOOL PERFORMANCE PROFILE) DATA

SPP (School Performance Profile) 2013-2014

Elementary Schools

Foster	97.8
Hoover	97.0
Howe	95.5
Jefferson	92.0
Lincoln	94.7
Markham	93.2
Washington	93.6

Middle Schools

Mellon	87.7*
Jefferson	93.4*

HIGH SCHOOL

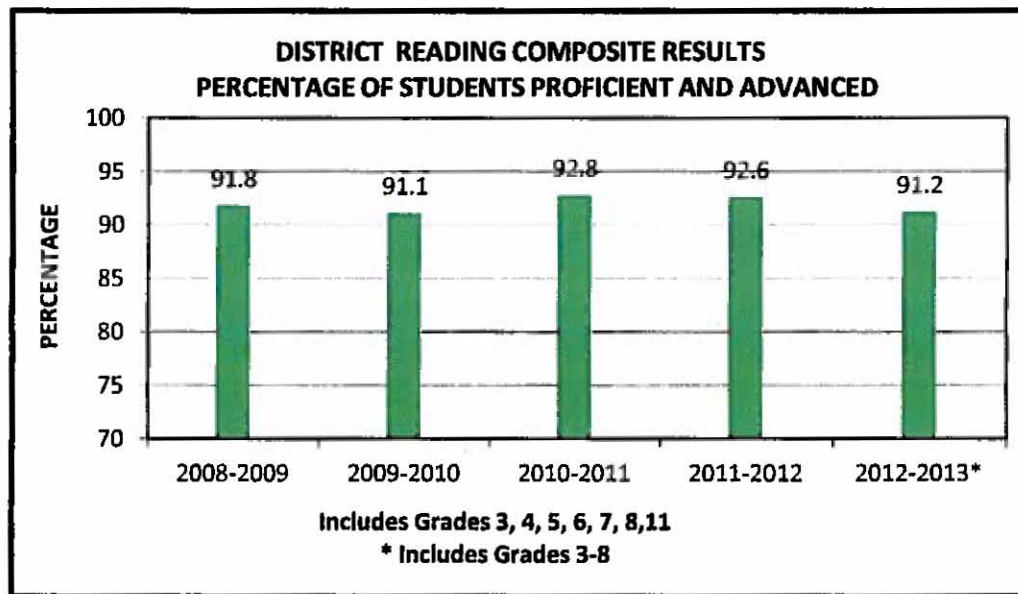
High School	96.6*
-------------	-------

*Statement on the SPP Web-site: Academic Performance Data is not currently available due to corrections the school will make in its end-of-course designations for students taking the Keystone Exams. This school's School Performance Profile (SPP) academic performance data will be available by January 2014. Current data, not corrected for the end-of-course designations, may be available sooner upon request from the Local Education Agency (LEA).

The Mt. Lebanon School District expects the School Performance Profile for the secondary schools to adjust in January 2014 once the PVAAS data for these respective schools is accurately calculated into the academic performance data.

Data compiled from:
Paschoolperformance.org

**PSSA (PENNSYLVANIA SYSTEM OF SCHOOL ASSESSMENT)
DATA**

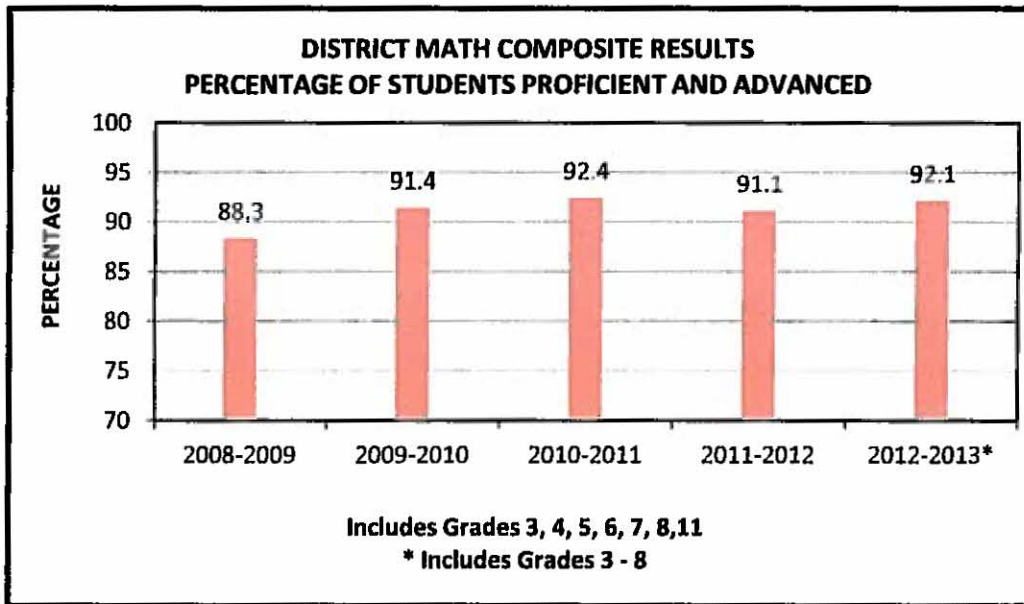


Data compiled from:

<http://paayp.emetric.net>

*Data compiled from:

Emetrics

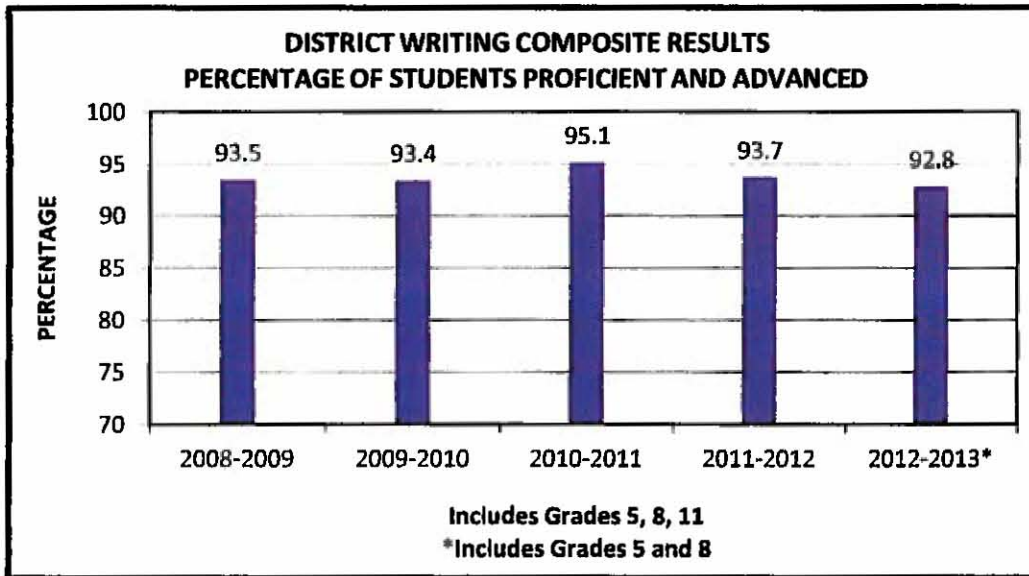


Data compiled from:

<http://paayp.emetric.net>

*Data compiled from:

Emetrics

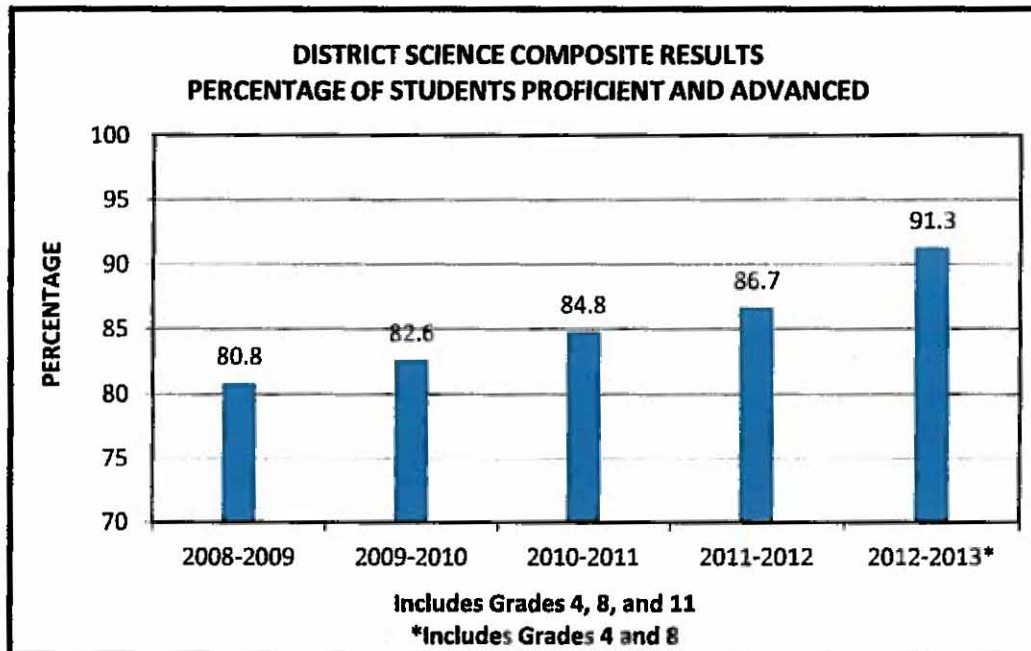


Data compiled from:

<http://paavp.emetric.net>

*Data compiled from:

Emetrics



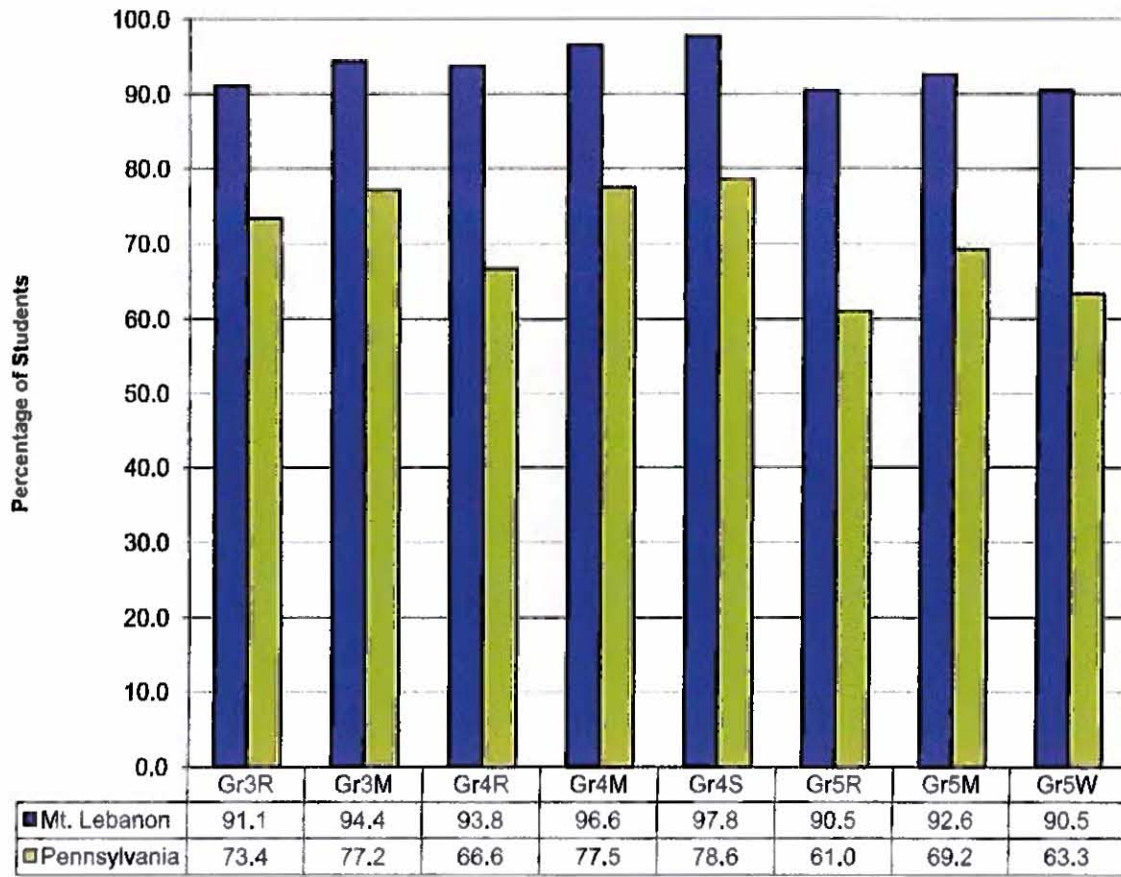
Data compiled from:

<http://paayp.emetric.net>

*Data compiled from:

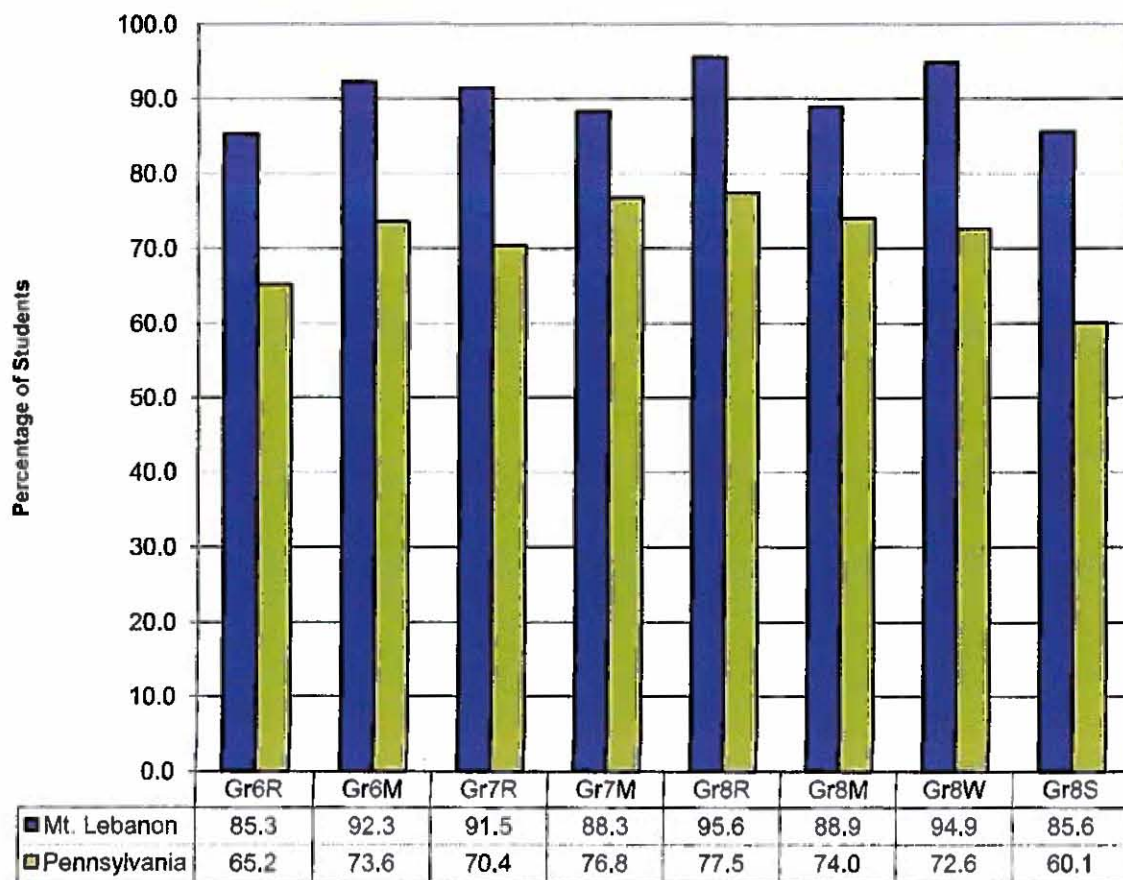
Emetrics

2012-2013 PSSA - Percentage of Students Proficient or Advanced



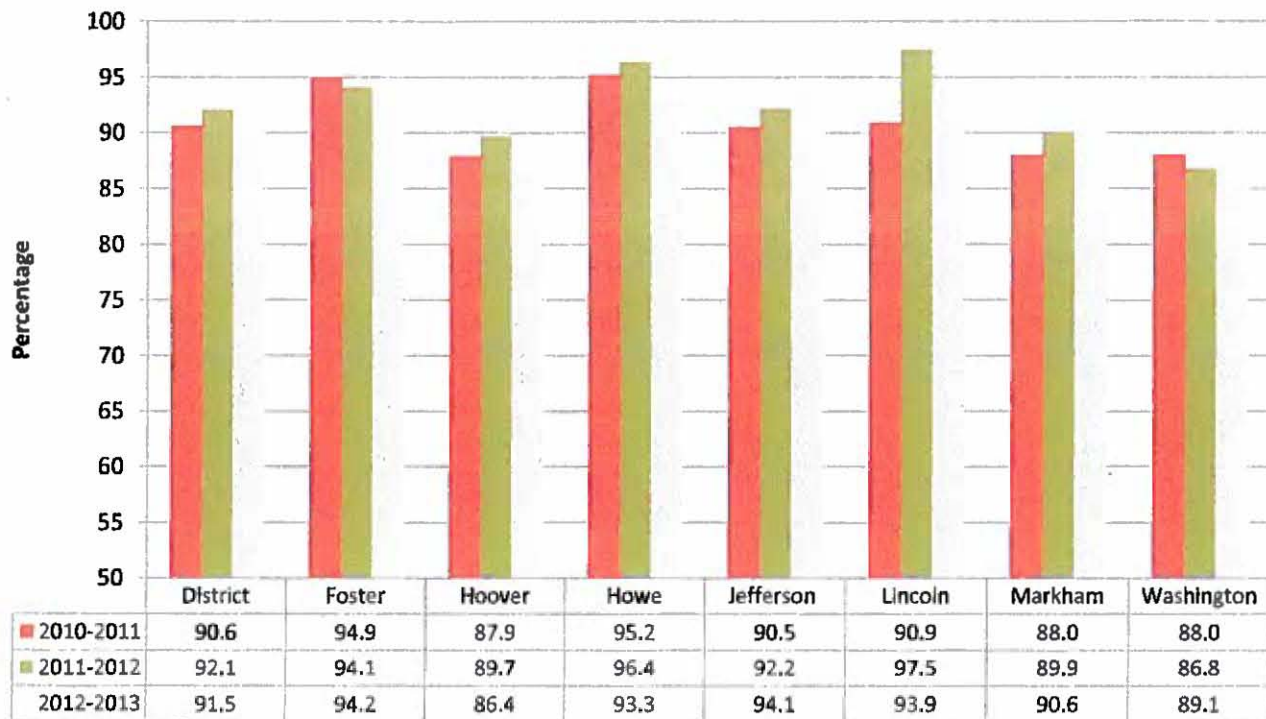
Data compiled from:
Emetrics

2012-2013 PSSA - Percentage of Students Proficient or Advanced



Data compiled from:
Emetrics

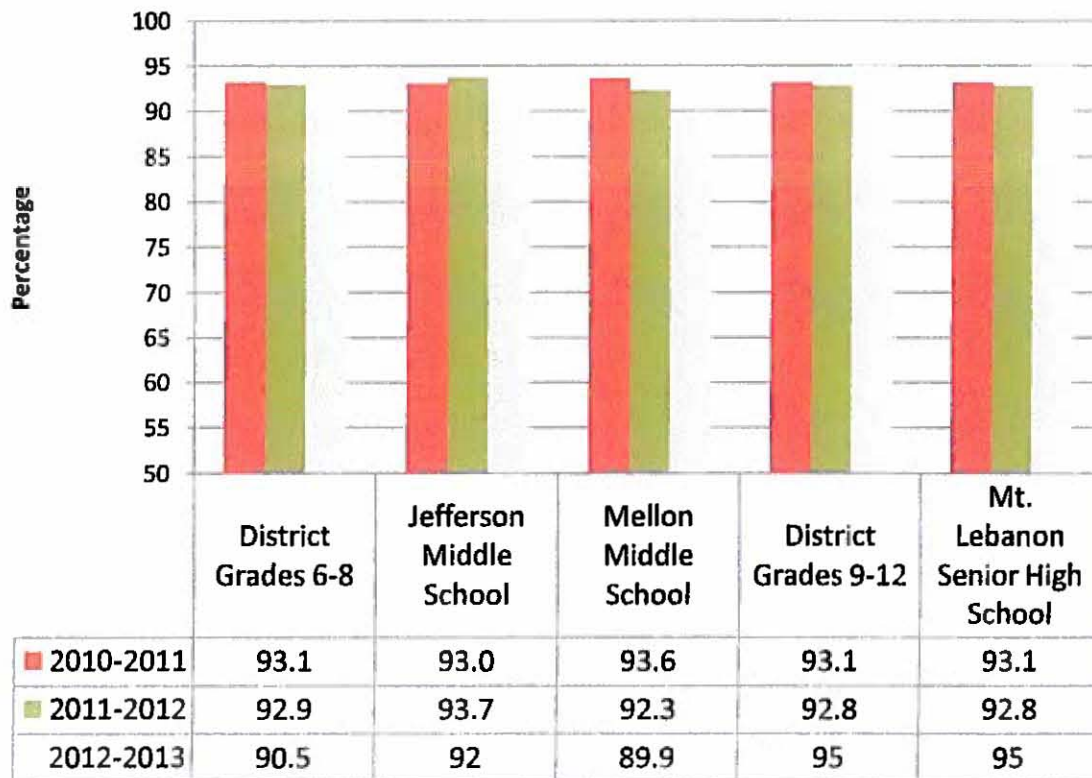
STUDENTS SCORING AT PROFICIENT OR ADVANCED GRADES 3 - 5 READING*



Data compiled from:

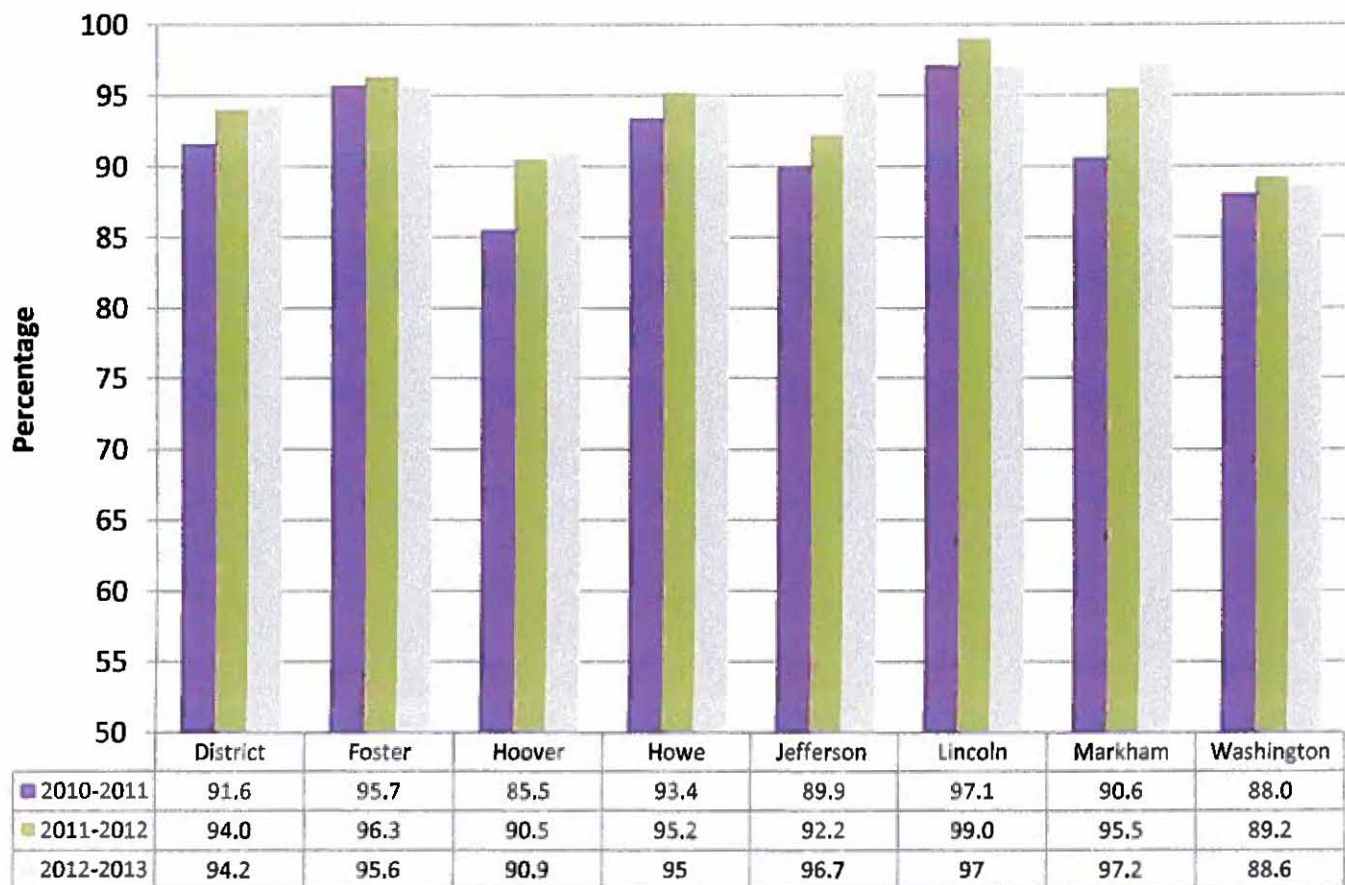
Emetric 'Getting Results' Packet

**STUDENTS SCORING AT PROFICIENT OR ADVANCED
GRADES 6-8 PSSA READING*
GRADES 9-12 ENGLISH LITERATURE KEYSTONE EXAM**



Data compiled from:
Emetrics 'Getting Results' Packet

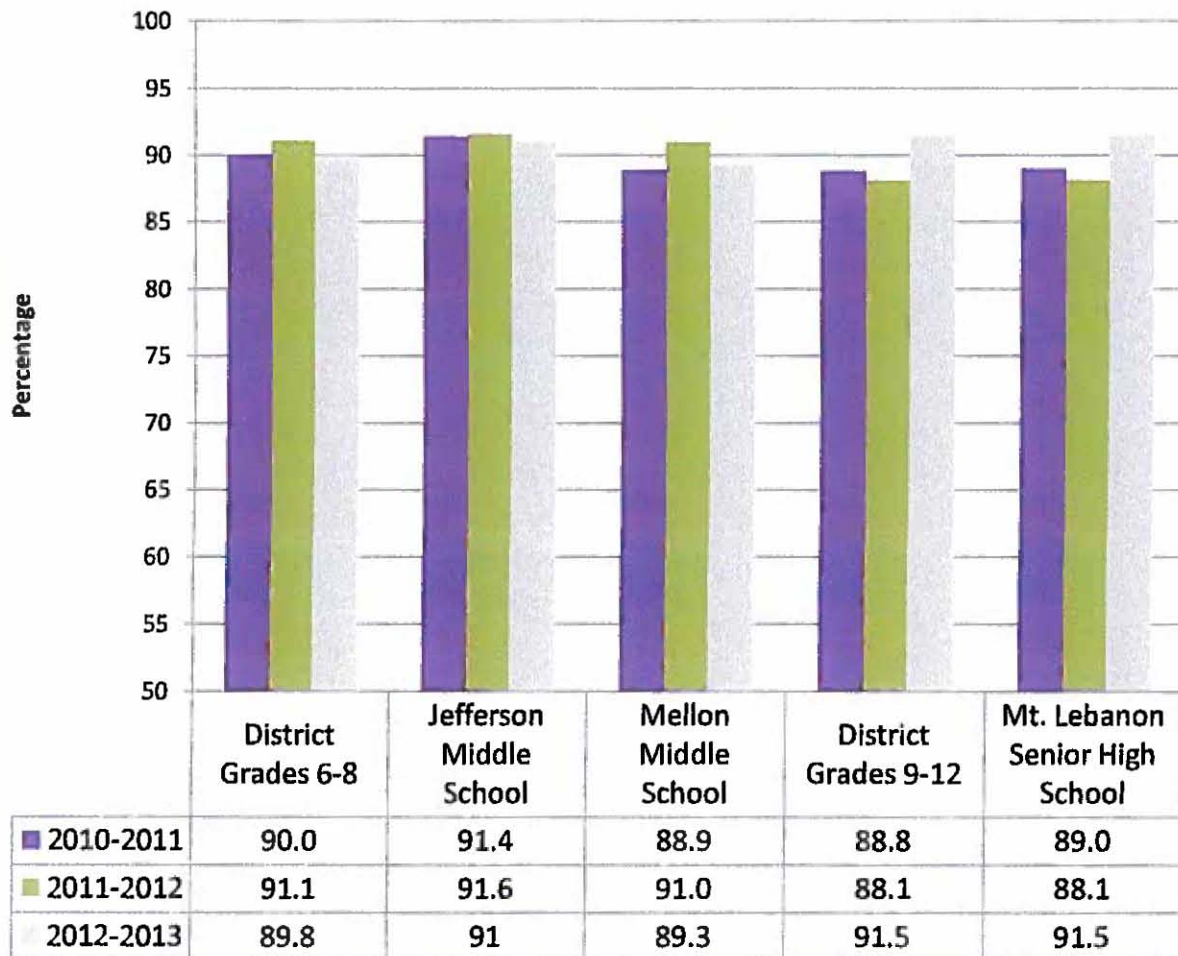
STUDENTS SCORING AT PROFICIENT OR ADVANCED GRADES 3 - 5 MATH*



Data compiled from:

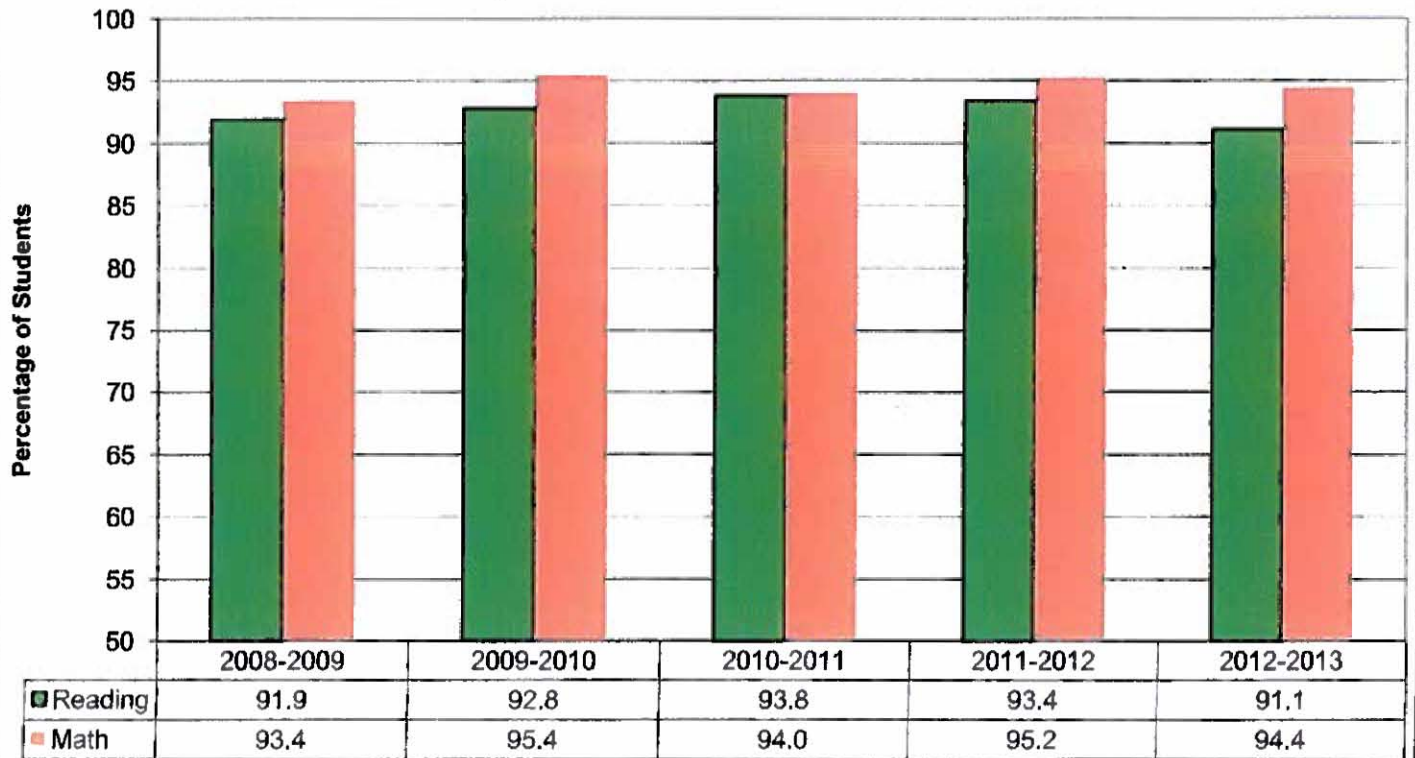
Emetrics 'Getting Results Packet

**STUDENTS SCORING AT PROFICIENT OR
ADVANCED
GRADES 6-8 PSSA MATH*
GRADES 9-12 ALGEBRA 1 KEYSTONE EXAM**



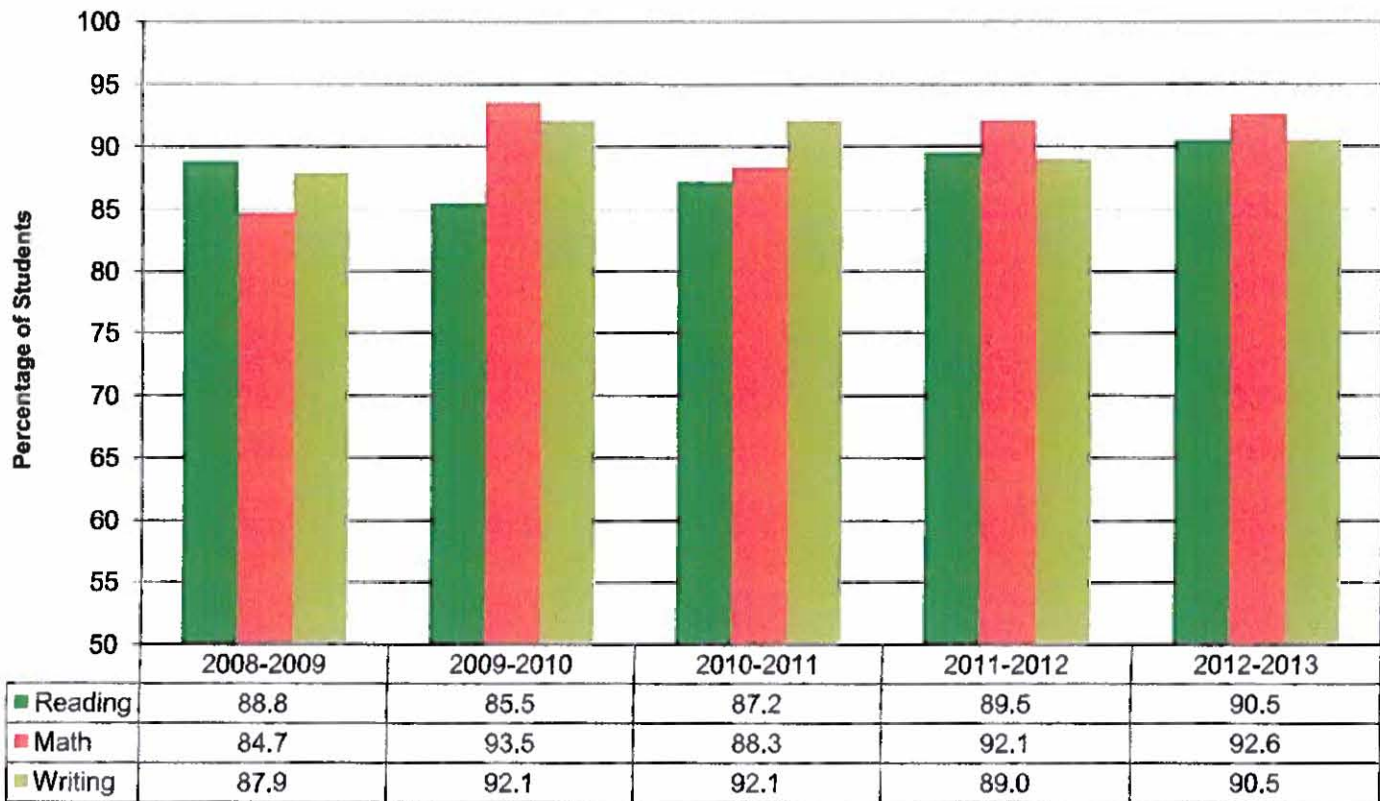
Data compiled from:
Emetrics 'Getting Results' Packet

**PSSA Five Year Trends
Grade 3 Reading and Math
Percentage of Students Who are Proficient or Advanced**



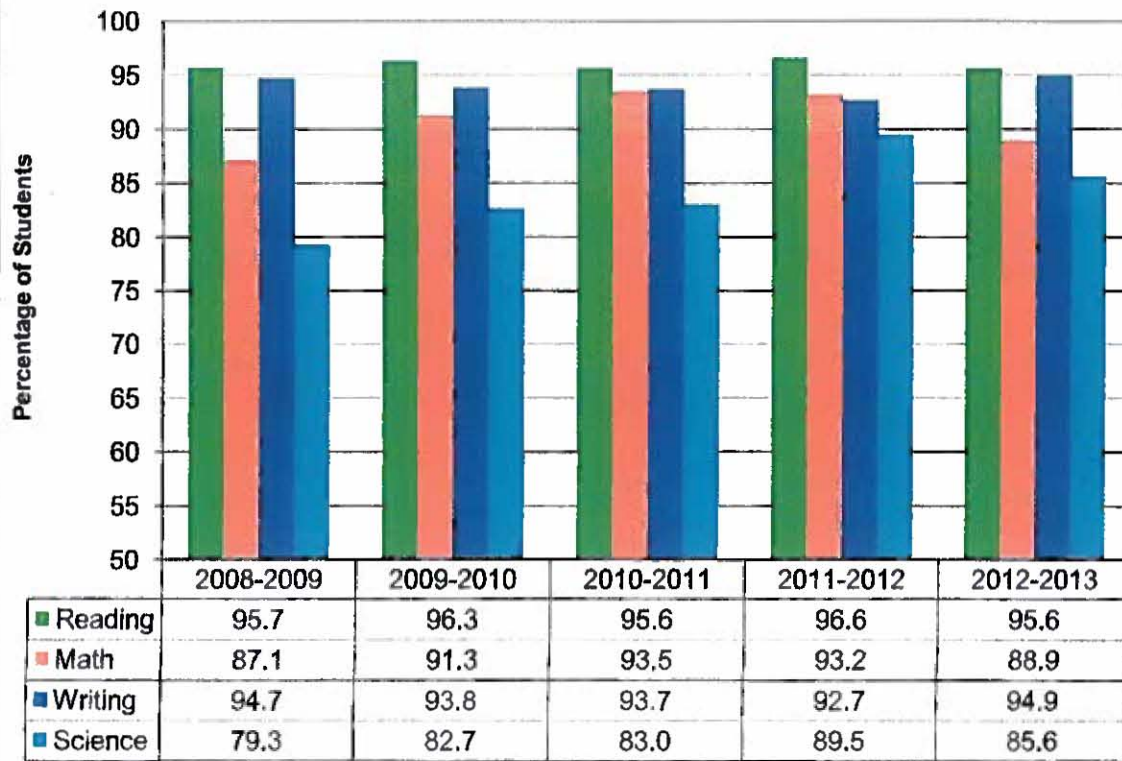
Data Compiled from:
Emetrics PSSA Only

PSSA Five Year Trends
Grade 5 Reading, Math and Writing
Percentage of Students Who are Proficient or Advanced



Data compiled from:
 Emetrics 'PSSA' Only

PSSA Five Year Trends
Grade 8 Reading, Math, Writing and Science
Percentage of Students Who are Proficient or Advanced



Data compiled from:
 Emetrics 'PSSA' Only

**2012-2013 PSSA (GRADES 4-8) COMPOSITE SCORES
MT. LEBANON AND COMPARATOR SCHOOL DISTRICTS**

DISTRICT	MATH % ADV. & PRO.	READING % ADV. & PRO.
Central Bucks	90.867	88.169
Fox Chapel	89.288	85.729
Great Valley	89.075	87.724
Hampton	92.367	90.155
Lower Merion	92.142	90.543
Lower Moreland	90.131	85.859
Mt. Lebanon	91.615	90.743
North Allegheny	89.148	87.714
Peters Township	92.059	90.343
Radnor	92.865	90.337
South Fayette	96.389	93.485
Tredyffrin-Easttown	92.464	90.456
Unionville-Chadds Ford	93.785	91.884
Upper Dublin	93.842	90.258
Upper St. Clair	91.269	90.412
Wallingford-Swarthmore	86.856	87.173

Source: Scatterplot function on PVAAS (Math and Reading)

KEYSTONE EXAM

2012-2013 KEYSTONE EXAM RESULTS

2013 Keystone Exams	Grade Level	Total	Number of Students Proficient	Number of Students Below Proficient	Percent Proficient	2012 PSSA Results
Biology	11	430	355	75	83%	73.5 (science)
	10	417	329	88	79%	
Algebra 1	11	433	396	37	91.5%	88.1 (math)
	10	425	358	67	84.2%	
	9	374	266	108	71%	
	8	375 ++ non- tested	285	90	75%	
	7 & 6	21	21	0	100%	
Literature	11	435	413	22	95%	92.8 (reading)
	10	421	373	48	89%	
	9 (Honors)	131	130	1	99%	

PVAAS

**2012-2013 SCHOOL VALUE ADDED SUMMARY
READING GRADES 3-5**

DISTRICT	PSSA Test(s)	Growth Measure	Standard Error	Average Growth Index
Foster Elementary School	3-5	5.7	1.5	3.81
Hoover Elementary School	3-5	5.3	1.7	3.07
Howe Elementary School	3-5	2.1	1.3	1.54
Jefferson Elementary School	3-5	3.4	1.4	2.34
Lincoln Elementary School	3-5	2.1	1.2	1.72
Markham Elementary School	3-5	0.9	1.3	0.65
Washington Elementary School	5-Mar	2.8	1.3	2.23

Data compiled from: pvaas.sas.com

	Significant evidence that the district exceeded the standard for PA Academic Growth
	Moderate evidence that the district exceeded the standard for PA Academic Growth
	Evidence that the district met the standard for PA Academic Growth
	Moderate evidence that the district did not meet the standard for PA Academic Growth
	Significant evidence that the district did not meet the standard for PA Academic Growth

**2012-2013 SCHOOL VALUE ADDED SUMMARY
READING GRADES 6-8**

DISTRICT	PSSA Test(s)	Growth Measure	Standard Error	Average Growth Index
ANDREW W. MELLON Middle School	6-8	-1.5	0.5	-2.74
THOMAS JEFFERSON Middle School	6-8	-0.7	0.6	-1.2

Data compiled from: pvaas.sas.com

	Significant evidence that the district exceeded the standard for PA Academic Growth
	Moderate evidence that the district exceeded the standard for PA Academic Growth
	Evidence that the district met the standard for PA Academic Growth
	Moderate evidence that the district did not meet the standard for PA Academic Growth
	Significant evidence that the district did not meet the standard for PA Academic Growth

**2012-2013 DISTRICT VALUE ADDED SUMMARY
READING GRADES 4-8 AND COMPARATOR SCHOOL DISTRICTS**

DISTRICT	PSSA Test(s)	Growth Measure	Standard Error	Average Growth Index
Central Bucks	3-11	1	0.2	6.41
Fox Chapel	3-11	-1.1	0.4	-3.23
Great Valley	3-11	1	0.4	2.85
Hampton	3-11	-0.3	0.4	-0.69
Lower Merion	3-12	1.1	0.3	4.12
Lower Moreland	3-11	1.7	0.5	3.69
Mt. Lebanon	3-11	0.4	0.3	1.36
North Allegheny	3-11	1	0.3	4.06
Peters Township	3-11	0.3	0.3	1.02
Radnor	3-11	2.4	0.4	6.21
South Fayette	3-12	2.1	0.4	5.03
Tredyffrin-Easttown	3-12	0.8	0.3	2.95
Unionville-Chadds Ford	3-11	0.4	0.3	1.1
Upper Dublin	3-11	0.4	0.4	1.06
Upper St. Clair	3-11	1.6	0.3	4.66
Wallingford-Swarthmore	3-11	1.1	0.4	2.88

Data compiled from: pvaas.sas.com

	Significant evidence that the district exceeded the standard for PA Academic Growth
	Moderate evidence that the district exceeded the standard for PA Academic Growth
	Evidence that the district met the standard for PA Academic Growth
	Moderate evidence that the district did not meet the standard for PA Academic Growth
	Significant evidence that the district did not meet the standard for PA Academic Growth

**2012-2013 SCHOOL VALUE ADDED SUMMARY
MATH GRADES 3-5**

DISTRICT	PSSA Test(s)	Growth Measure	Standard Error	Average Growth Index
Foster Elementary School	5-Mar	2.1	1.3	1.57
Hoover Elementary School	5-Mar	5.9	1.5	3.9
Howe Elementary School	5-Mar	4.9	1.2	4.24
Jefferson Elementary School	5-Mar	3.8	1.2	3.08
Lincoln Elementary School	5-Mar	1.3	1.1	1.19
Markham Elementary School	5-Mar	-0.6	1.2	-0.56
Washington Elementary School	5-Mar	3.8	1.1	3.42

Data compiled from: pvaas.sas.com

	Significant evidence that the district exceeded the standard for PA Academic Growth
	Moderate evidence that the district exceeded the standard for PA Academic Growth
	Evidence that the district met the standard for PA Academic Growth
	Moderate evidence that the district did not meet the standard for PA Academic Growth
	Significant evidence that the district did not meet the standard for PA Academic Growth

**2012-2013 SCHOOL VALUE ADDED SUMMARY
MATH GRADES 6-8**

DISTRICT	PSSA Test(s)	Growth Measure	Standard Error	Average Growth Index
ANDREW W. MELLON Middle School	6-8	0.3	0.4	0.58
THOMAS JEFFERSON Middle School	6-8	1.2	0.5	2.56

Data compiled from: pvaas.sas.com

	Significant evidence that the district exceeded the standard for PA Academic Growth
	Moderate evidence that the district exceeded the standard for PA Academic Growth
	Evidence that the district met the standard for PA Academic Growth
	Moderate evidence that the district did not meet the standard for PA Academic Growth
	Significant evidence that the district did not meet the standard for PA Academic Growth

**2012-2013 DISTRICT VALUE ADDED SUMMARY
MATH GRADES 4-8 AND COMPARATOR SCHOOL DISTRICTS**

DISTRICT	PSSA Test(s)	Growth Measure	Standard Error	Average Growth Index
Central Bucks	3-11	1.9	0.1	14.19
Fox Chapel	3-11	-0.3	0.3	-1.06
Great Valley	3-11	2.1	0.3	0.98
Hampton	3-11	0.7	0.3	1.97
Lower Merion	3-12	1.5	0.2	6.41
Lower Moreland	3-11	0.5	0.4	1.3
Mt. Lebanon	3-11	1.5	0.3	5.5
North Allegheny	3-11	2.6	0.2	12.02
Peters Township	3-11	2.4	0.3	8.8
Radnor	3-11	4	0.3	12.53
South Fayette	3-12	0.8	0.4	2.15
Tredyffrin-Easttown	3-12	2.5	0.2	10.56
Unionville-Chadds Ford	3-12	0.9	0.3	2.83
Upper Dublin	3-11	1.1	0.3	3.5
Upper St. Clair	3-11	2.1	0.3	7.16
Wallingford-Swarthmore	3-11	0.1	0.3	0.26

Data compiled from: pvaas.sas.com

	Significant evidence that the district exceeded the standard for PA Academic Growth
	Moderate evidence that the district exceeded the standard for PA Academic Growth
	Evidence that the district met the standard for PA Academic Growth
	Moderate evidence that the district did not meet the standard for PA Academic Growth
	Significant evidence that the district did not meet the standard for PA Academic Growth

**SAT REASONING
(COLLEGE BOARD)**

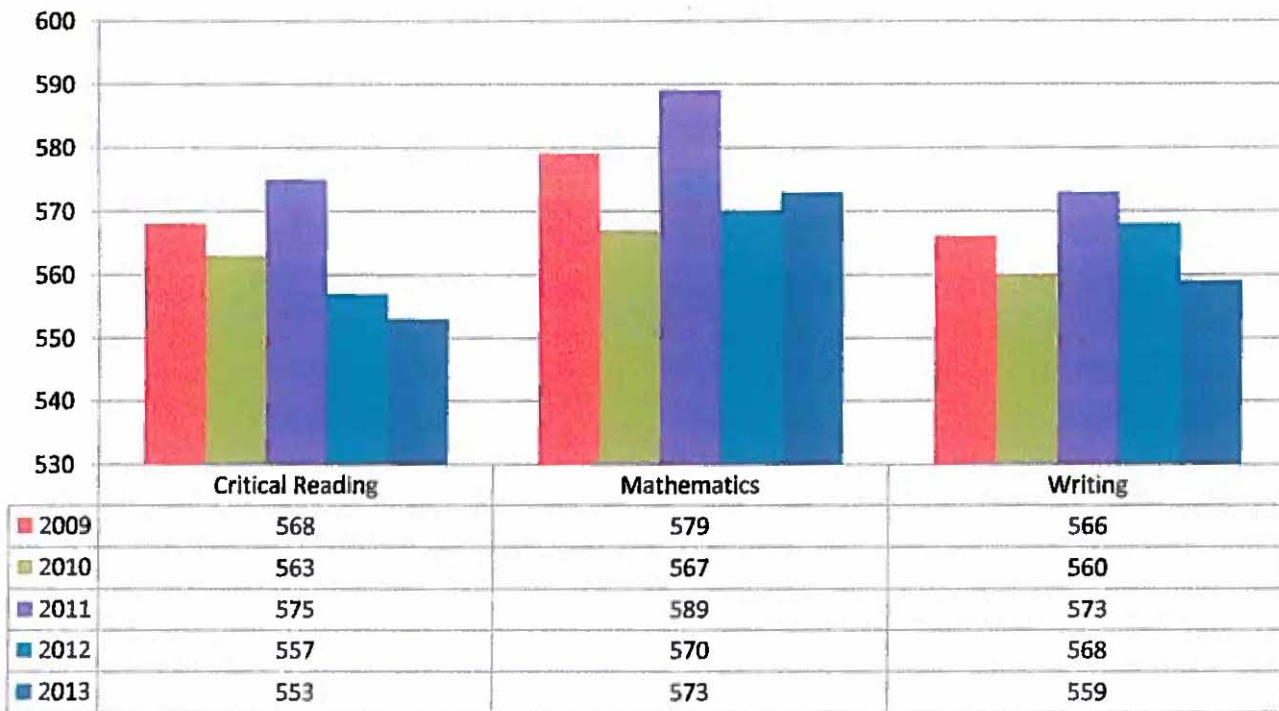
SUMMARY OF SAT REASONING MEAN SCORES

The SAT Reasoning test is a nationally-normed benchmark utilized by colleges and universities as a major admissions indicator. It is designed to help admissions personnel in assessing a student's likelihood of success in a college environment. A product of the Educational Testing Service (ETS) also known as the College Board, the SAT Reasoning test addresses three core areas – Critical Reading, Mathematics and Writing. In the following report, the scores for Critical Reading, Mathematics and Writing are listed separately and compared with both national and Pennsylvania state means. Additionally, data is further broken down by gender.

SAT Reasoning scores can range from 200-800 on each of the three sections of the test. The cumulative mean score of the Critical Reading and Mathematics sections for Mt. Lebanon students combined was 1126 (Critical Reading 553, Mathematics 573), 116 points higher than the national mean and 128 points higher than the Pennsylvania mean. The mean score for the writing test for Mt. Lebanon students this year is 559. This is 74 points higher than the national mean and 80 points higher than the Pennsylvania mean.

It is significant to note that Mt. Lebanon's mean SAT Reasoning scores represent 93% of the class of 2013. Students of all abilities are taking the SAT Reasoning test within our district and are being accounted for in very favorable national and state comparisons.

SAT Results



Data compiled from:

<http://www.pde.state.pa.us>

SAT Reasoning Test Score Distributions (# Totals) Class of 2013

Score Range	Critical Reading	Mathematics	Writing
800-700	30	44	39
690-600	106	130	111
590-500	157	139	153
490-400	98	80	93
390-300	17	13	8
290-200	0	2	4
TOTAL	408	408	408

PLEASE SEE ADDITIONAL WORKSHEETS: CONTENT SPECIFIC GRAPHS

SAT Reasoning Test Score Distributions (% In Group) Class of 2013

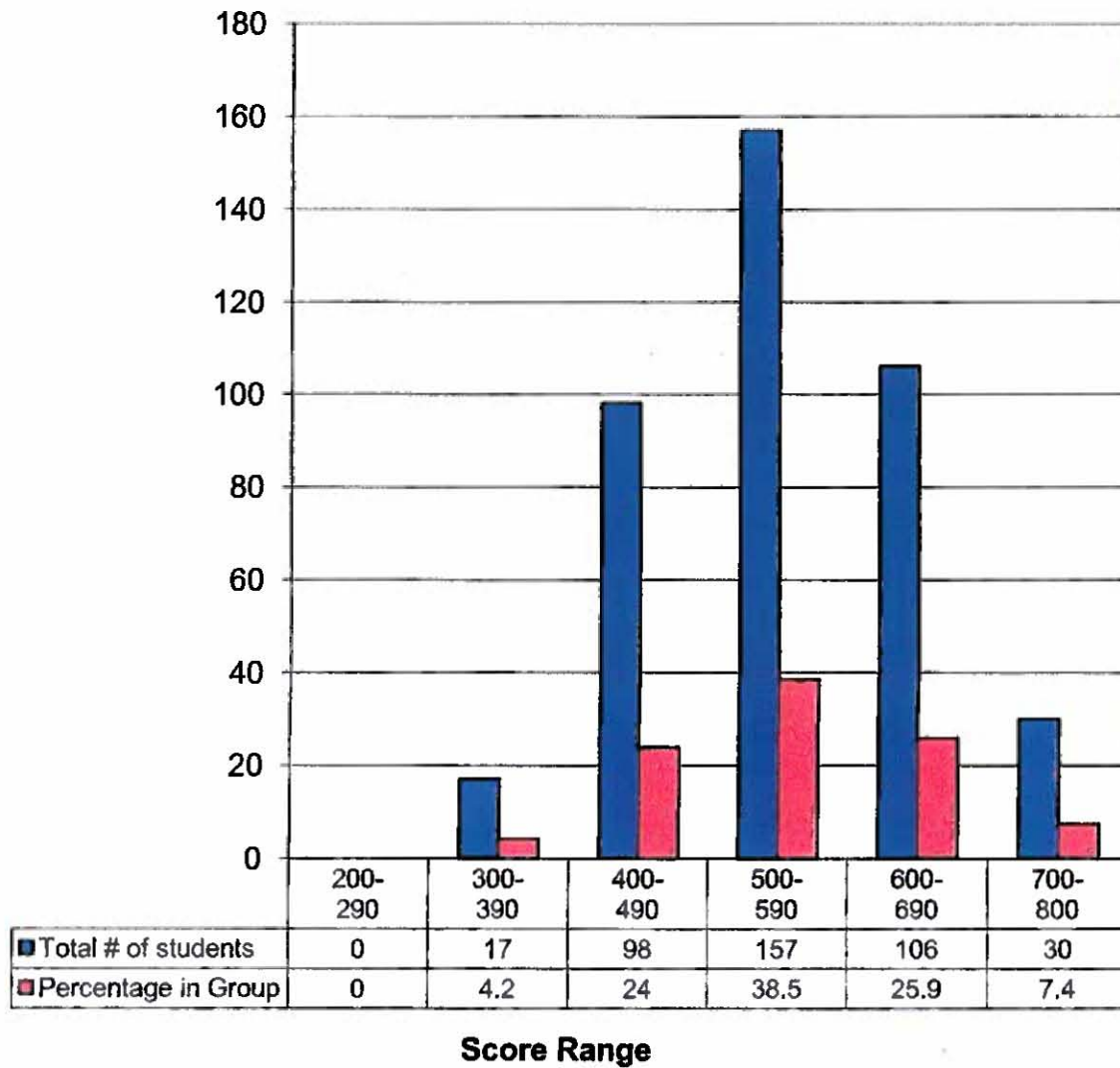
Score Range	Critical Reading	Mathematics	Writing
800-700	7.4%	10.8%	9.5%
690-600	25.9%	31.9%	27.2%
590-500	38.5%	34.1%	37.5%
490-400	24.0%	19.6%	22.8%
390-300	4.2%	3.2%	2.0%
290-200	0.0%	0.4%	1.0%
TOTAL	100%	100%	100%

Data compiled from:

2013 The College Board; 2013 Colleg-Bound Seniors High School Profile Report for Mt. Lebanon High School.

Class of 2013 SAT Distribution - Critical Reading

MTLHS Students

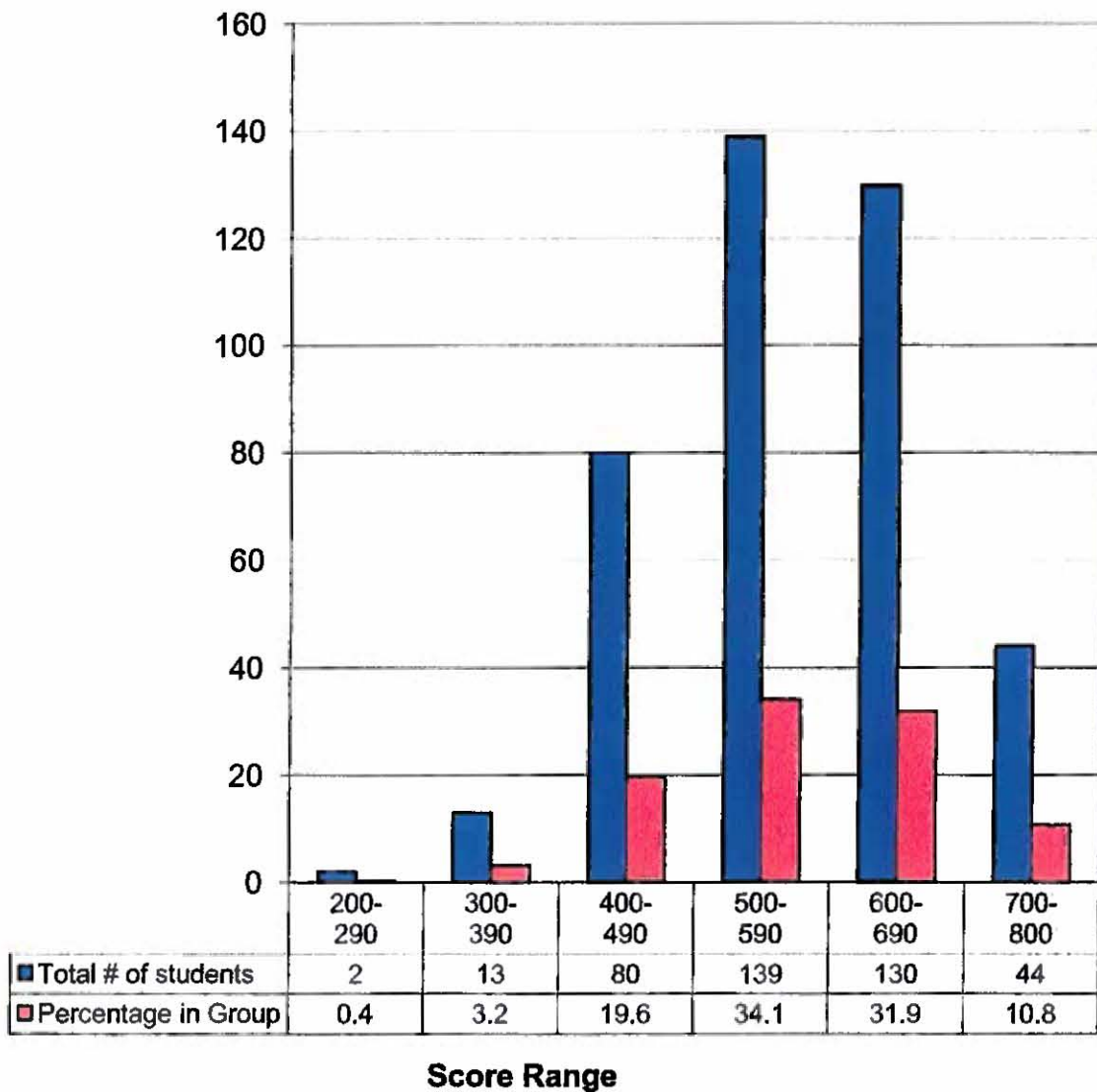


Data compiled from:

2013 The College Board: 2013 College-Bound Seniors High School Profile Report for ML Lebanon High School

Class of 2013 SAT Distribution - Mathematics

MTLHS Students

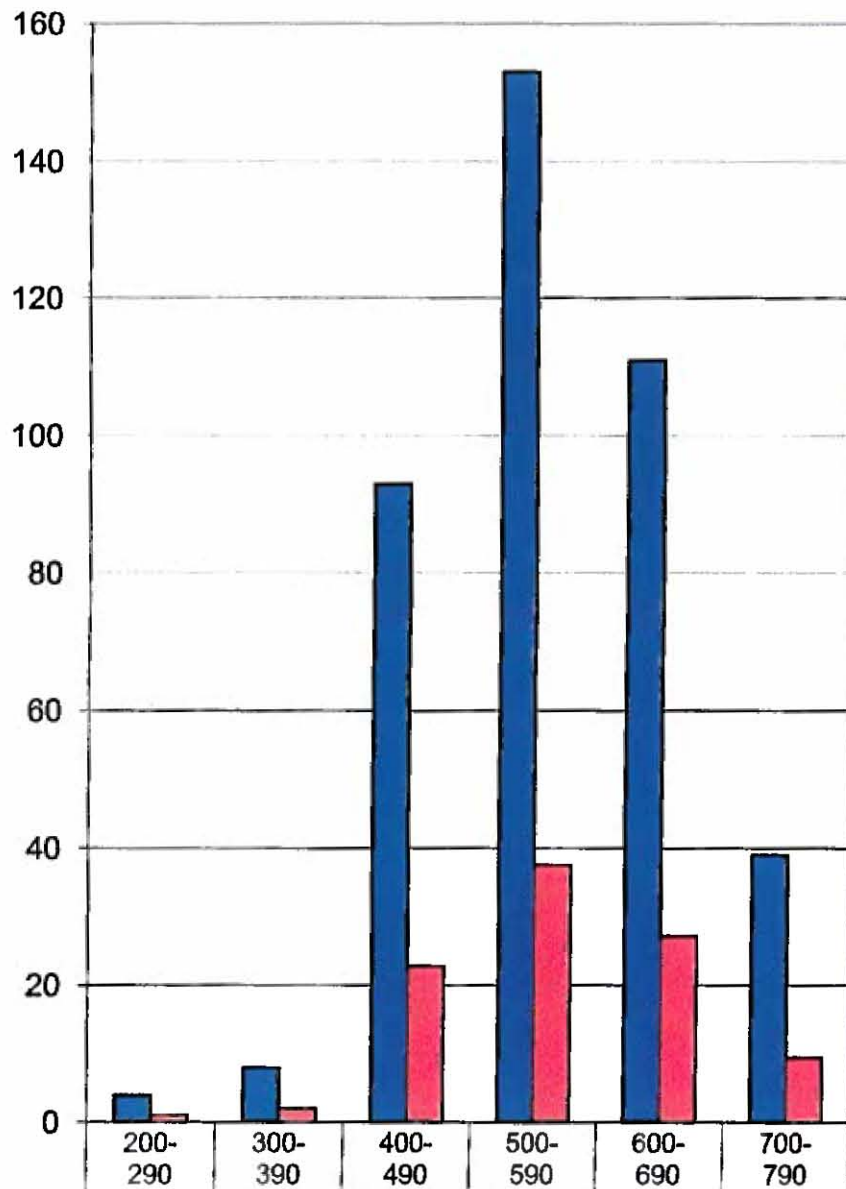


Data compiled from:

2013 The College Board; 2013 College-Bound Seniors High School Profile Report for Mt. Lebanon High School

Class of 2013 SAT Distribution - Writing

MTLHS Students



Total # of students	4	8	93	153	111	39
Percentage in Group	1	2	22.8	37.5	27.2	9.5

Score Range

Data compiled from: 2013 The College Board; 2013 College-Bound Seniors High School Profile Report for Mt. Lebanon High School

**MT. LEBANON SCHOOL DISTRICT SAT REASONING MEAN SCORES
TREND SUMMARY**

CRITICAL READING	MT. LEBANON SCHOOL DISTRICT				NATION			PENNSYLVANIA		
	MALE	FEMALE	COMBINED	% OF CLASS TESTING	MALE	FEMALE	COMBINED	MALE	FEMALE	COMBINED
2003-04	578	564	571	93	512	504	508	505	497	501
2004-05	570	572	571	92	513	505	508	506	496	501
2005-06	571	584	578	93	505	502	503	496	491	493
2006-07	569	568	568	95	504	500	502	496	491	493
2007-08	572	557	564	92	504	500	502	497	492	494
2008-09	564	573	568	93	503	498	501	497	489	493
2009-10	555	569	563	94	503	498	501	494	490	492
2010-11	573	578	575	93	500	495	498	497	490	493
2011-12	562	552	557	92	498	493	496	495	488	491
2012-13	551	554	553	93	499	494	496	499	494	496

MATHEMATICS	MT. LEBANON SCHOOL DISTRICT			NATION			PENNSYLVANIA		
	MALE	FEMALE	COMBINED	MALE	FEMALE	COMBINED	MALE	FEMALE	COMBINED
2003-04	595	553	575	537	501	518	521	485	502
2004-05	593	564	579	538	504	520	522	487	503
2005-06	606	574	590	536	502	518	518	483	500
2006-07	585	564	573	533	499	515	518	483	499
2007-08	599	561	581	533	500	515	520	485	501
2008-09	590	569	579	534	499	515	521	485	501
2009-10	584	551	567	534	500	516	519	485	501
2010-11	595	581	589	531	500	515	517	486	501
2011-12	590	549	570	532	499	514	519	485	501
2012-13	583	564	573	531	499	514	531	499	514

WRITING	MT. LEBANON SCHOOL DISTRICT			NATION			PENNSYLVANIA		
	MALE	FEMALE	COMBINED	MALE	FEMALE	COMBINED	MALE	FEMALE	COMBINED
2005-06	561	586	573	491	502	497	477	488	483
2006-07	553	569	561	489	500	494	477	488	482
2007-08	562	563	562	488	501	494	476	489	483
2008-09	550	583	566	486	499	493	477	489	483
2009-10	548	573	560	486	498	492	473	486	480
2010-11	558	590	573	482	496	489	472	486	479
2011-12	561	576	568	481	494	488	472	487	480
2012-13	559	565	562	482	493	488	482	493	488

Data compiled from: 2013 The College Board; 2013 College-Bound Seniors High School Highlights Report for Mt. Lebanon High School

**SAT RANKING OF TOP 20 SCHOOLS
AND COMPARATOR SCHOOLS IN PENNSYLVANIA**

**2013 SAT SCORES
TOP 20 AND COMPARATOR SCHOOLS
IN PENNSYLVANIA**

State Rank	DISTRICT	SCHOOL NAME	VERBAL AVERAGE SCORE
1	PHILADELPHIA CITY SD	J R MASTERMAN LAB. & DEMONSTRATION SCHOOL	632
2	TREDYFFRIN-EASTTOWN SD	CONESTOGA HIGH SCHOOL	600
3	RADNOR TOWNSHIP SD	RADNOR HIGH SCHOOL	586
4	LOWER MERION SD	HARRITON HIGH SCHOOL OF LOWER MERION	581
5	UPPER SAINT CLAIR SD	UPPER SAINT CLAIR HIGH SCHOOL	574
6	UNIONVILLE-CHADDS FORD SD	UNIONVILLE HIGH SCHOOL	573
7	NORTH ALLEGHENY SD	NORTH ALLEGHENY SENIOR HIGH SCHOOL	568
8	GREAT VALLEY SD	GREAT VALLEY HIGH SCHOOL	567
9	FOX CHAPEL AREA SD	FOX CHAPEL AREA HIGH SCHOOL	567
10	LOWER MERION SD	LOWER MERION HIGH SCHOOL	566
11	WALLINGFORD-SWARTHMORE SD	STRATH HAVEN HIGH SCHOOL	564
12	ERIE CITY SD	COLLEGIATE ACADEMY	561
13	CENTRAL BUCKS SD	CENTRAL BUCKS HIGH SCHOOL EAST	557
14	COUNCIL ROCK SD	COUNCIL ROCK HIGH SCHOOL NORTH	557
15	DERRY TOWNSHIP SD	HERSHEY HIGH SCHOOL	556
16	NEW HOPE-SOLEBURY SD	NEW HOPE-SOLEBURY HIGH SCHOOL	554
17	LEWISBURG AREA SD	LEWISBURG AREA HIGH SCHOOL	554
18	MT LEBANON SD	MT. LEBANON HIGH SCHOOL	553
19	CAMP HILL SD	CAMP HILL HIGH SCHOOL	553
20	STATE COLLEGE AREA SD	STATE COLLEGE AREA HIGH SCHOOL	552
24	UPPER DUBLIN SD	UPPER DUBLIN HIGH SCHOOL	545
31	HAMPTON TOWNSHIP SD	HAMPTON HIGH SCHOOL	539
44	CENTRAL BUCKS SD	CENTRAL BUCKS HIGH SCHOOL WEST	534
45	PETERS TOWNSHIP SD	PETERS TOWNSHIP HIGH SCHOOL	534
46	LOWER MORELAND TOWNSHIP SD	LOWER MORELAND HIGH SCHOOL	533
65	CENTRAL BUCKS SD	CENTRAL BUCKS HIGH SCHOOL SOUTH	525
66	SOUTH FAYETTE TOWNSHIP SD	SOUTH FAYETTE HIGH SCHOOL	524

data compiled from:
www.pde.state.pa.us

**2013 SAT SCORES
TOP 20 AND COMPARATOR SCHOOLS
IN PENNSYLVANIA**

State Rank	DISTRICT	SCHOOL NAME	MATH AVERAGE SCORE
1	PHILADELPHIA CITY SD	J R MASTERMAN LABORATORY AND DEMONSTRATION	661
2	RADNOR TOWNSHIP SD	RADNOR HIGH SCHOOL	616
3	TREDYFFRIN-EASTTOWN SD	CONESTOGA HIGH SCHOOL	611
4	LOWER MERION SD	HARRITON HIGH SCHOOL OF LOWER MERION	593
5	UPPER SAINT CLAIR SD	UPPER SAINT CLAIR HIGH SCHOOL	591
6	UNIONVILLE-CHADDS FORD	UNIONVILLE HIGH SCHOOL	587
7	NORTH ALLEGHENY SD	NORTH ALLEGHENY SENIOR HIGH SCHOOL	586
8	WALLINGFORD-SWARTHMO	STRATH HAVEN HIGH SCHOOL	586
9	GREAT VALLEY SD	GREAT VALLEY HIGH SCHOOL	581
10	FOX CHAPEL AREA SD	FOX CHAPEL AREA HIGH SCHOOL	578
11	PINE-RICHLAND SD	PINE-RICHLAND HIGH SCHOOL	577
12	COUNCIL ROCK SD	COUNCIL ROCK HIGH SCHOOL NORTH	577
13	CENTRAL BUCKS SD	CENTRAL BUCKS HIGH SCHOOL EAST	576
14	PHILADELPHIA CITY SD	CENTRAL HIGH SCHOOL	575
15	LOWER MERION SD	LOWER MERION HIGH SCHOOL	574
16	DERRY TOWNSHIP SD	HERSHEY HIGH SCHOOL	573
17	MT LEBANON SD	MT. LEBANON HIGH SCHOOL	573
18	UPPER DUBLIN SD	UPPER DUBLIN HIGH SCHOOL	568
19	SOUTH FAYETTE TOWNSHIP	SOUTH FAYETTE HIGH SCHOOL	567
20	CUMBERLAND VALLEY SD	CUMBERLAND VALLEY HIGH SCHOOL	566
27	CENTRAL BUCKS SD	CENTRAL BUCKS HIGH SCHOOL WEST	559
31	LOWER MORELAND TOWNSHIP	LOWER MORELAND HIGH SCHOOL	556
32	PETERS TOWNSHIP SD	PETERS TOWNSHIP HIGH SCHOOL	555
34	CENTRAL BUCKS SD	CENTRAL BUCKS HIGH SCHOOL SOUTH	553
37	HAMPTON TOWNSHIP SD	HAMPTON HIGH SCHOOL	551

data compiled from:
www.pde.state.pa.us

**2013 SAT SCORES
TOP 20 AND COMPARATOR SCHOOL
IN PENNSYLVANIA**

State Rank	DISTRICT	SCHOOL NAME	WRITING AVERAGE SCORE
1	PHILADELPHIA CITY SD	J R MASTERMAN LAB. & DEMONSTRATION SCHOOL	645
2	TREDYFFRIN-EASTTOWN SD	CONESTOGA HIGH SCHOOL	598
3	RADNOR TOWNSHIP SD	RADNOR HIGH SCHOOL	588
4	LOWER MERION SD	HARRITON HIGH SCHOOL OF LOWER MERION	576
5	UNIONVILLE-CHADDS FORD	UNIONVILLE HIGH SCHOOL	571
6	UPPER SAINT CLAIR SD	UPPER SAINT CLAIR HIGH SCHOOL	571
7	CENTRAL BUCKS SD	CENTRAL BUCKS HIGH SCHOOL EAST	567
8	JENKINTOWN SD	JENKINTOWN JUNIOR-SENIOR HIGH SCHOOL	561
9	NORTH ALLEGHENY SD	NORTH ALLEGHENY SENIOR HIGH SCHOOL	561
10	MT LEBANON SD	MT. LEBANON HIGH SCHOOL	559
11	WALLINGFORD-SWARTHMO	STRATH HAVEN HIGH SCHOOL	559
12	FOX CHAPEL AREA SD	FOX CHAPEL AREA HIGH SCHOOL	558
13	COUNCIL ROCK SD	COUNCIL ROCK HIGH SCHOOL NORTH	558
14	GREAT VALLEY SD	GREAT VALLEY HIGH SCHOOL	556
15	DERRY TOWNSHIP SD	HERSHEY HIGH SCHOOL	554
16	UPPER DUBLIN SD	UPPER DUBLIN HIGH SCHOOL	554
17	PINE-RICHLAND SD	PINE-RICHLAND HIGH SCHOOL	550
18	NEW HOPE-SOLEBURY SD	NEW HOPE-SOLEBURY HIGH SCHOOL	550
19	LOWER MERION SD	LOWER MERION HIGH SCHOOL	550
20	LOWER MORELAND TOWNSH	LOWER MORELAND HIGH SCHOOL	548
26	CENTRAL BUCKS SD	CENTRAL BUCKS HIGH SCHOOL SOUTH	537
29	CENTRAL BUCKS SD	CENTRAL BUCKS HIGH SCHOOL WEST	534
37	HAMPTON TOWNSHIP SD	HAMPTON HIGH SCHOOL	530
39	PETERS TOWNSHIP SD	PETERS TOWNSHIP HIGH SCHOOL	526
47	SOUTH FAYETTE TOWNSHIP	SOUTH FAYETTE HIGH SCHOOL	521

data compiled from:
www.pde.state.pa.us

SUMMARY OF SAT SUBJECT TESTS

SAT Subject tests are offered in specific content areas. They are often required for admission to the most highly selective colleges and universities. Students typically take only those tests that will be required or recommended for those universities/colleges to which they will be applying. Data provided is from a narrow cross section of our school, state and national populations that self-select to take exams based on college admission intentions. Since the SAT Reasoning test now includes an essay, the SAT Subject test in Writing (which required an essay) was discontinued after the 2005-2006 school year.

This report is a summary of the mean scores of Mt. Lebanon students for SAT Subject tests compared to state and national means scores. Subject test scores range from 200-800. In 5 of the 8 tests in which there were measurable outcomes, Mt. Lebanon students' scores were above state and national averages to include English Literature, Chemistry, Biology (Ecological), Biology (Molecular), and US History. For two tests, Math Level 1 and Math Level 2, scores were above the national average and slightly below the state average.

SAT SUBJECT TEST PARTICIPATION AND MEAN SCORES COMPARISONS

Year	English Writing				English Literature				Math Level 1				Math Level 2			
	#	MTL	Nat	PA	#	MTL	Nat	PA	#	MTL	Nat	PA	#	MTL	Nat	PA
2003-04	116	645	604	631	18	627	590	626	34	620	586	617	67	684	669	675
2004-05	104	644	605	634	14	660	589	625	35	622	586	618	62	691	670	676
2005-06	6	670	620	646	29	676	583	626	28	649	593	615	84	702	644	675
2006-07	NA	NA	NA	NA	35	665	581	621	51	645	596	615	67	678	639	673
2007-08	NA	NA	NA	NA	38	671	580	625	38	636	599	623	70	700	644	678
2008-09	NA	NA	NA	NA	34	676	580	622	34	635	599	616	55	696	648	676
2009-10	NA	NA	NA	NA	35	640	580	628	35	636	605	626	61	661	649	683
2010-11	NA	NA	NA	NA	36	665	576	630	33	642	610	633	61	687	654	689
2011-12	NA	NA	NA	NA	30	643	604	632	35	631	617	632	58	678	677	687
2012-13	N/A	N/A	N/A	N/A	17	660	613	631	16	633	621	634	70	678	686	693

Year	Chemistry				Physics				Biology (Ecological)				Biology (Molecular)			
	#	MTL	Nat	PA	#	MTL	Nat	PA	#	MTL	Nat	PA	#	MTL	Nat	PA
2003-04	88	582	612	616	25	693	651	638	5	560	584	592	9	611	617	624
2004-05	42	632	628	638	26	673	652	648	7	530	595	609	15	649	627	636
2005-06	42	670	629	634	35	683	643	650	7	634	591	606	8	701	630	646
2006-07	36	642	630	634	29	640	647	645	8	619	589	605	8	676	630	644
2007-08	36	671	635	642	25	641	650	643	4	*	593	615	5	732	630	646
2008-09	52	654	638	640	21	667	655	644	5	560	598	615	*	*	641	658
2009-10	29	667	644	651	23	610	658	646	17	681	601	627	5	722	638	655
2010-11	24	684	648	652	15	687	656	653	20	646	604	634	9	690	635	653
2011-12	31	685	662	656	10	627	662	649	31	646	623	640	7	693	654	659
2012-13	36	710	666	664	18	648	667	659	23	663	626	642	15	707	655	663

Year	US History				French				German				Spanish			
	#	MTL	Nat	PA	#	MTL	Nat	PA	#	MTL	Nat	PA	#	MTL	Nat	PA
2003-04	46	701	603	633	5	570	610	593	6	545	611	539	7	591	622	571
2004-05	29	659	599	631	4	*	620	596	3	*	613	536	2	*	636	594
2005-06	66	698	601	633	7	606	612	599	1	*	610	584	3	*	634	594
2006-07	81	654	588	622	8	645	615	602	3	*	604	552	6	612	632	587
2007-08	78	656	597	633	6	650	596	620	1	*	620	542	3	*	640	595
2008-09	56	679	599	638	4	*	618	595	1	*	616	548	2	*	646	593
2009-10	51	631	601	645	4	*	620	593	0	*	639	618	4	*	644	601
2010-11	45	675	608	652	3	*	622	582	1	*	622	559	3	*	647	600
2011-12	37	658	640	660	5	678	631	592	3	*	628	538	2	*	649	588
2012-13	31	676	651	663	4	*	635	594	1	*	622	573	3	*	656	599

Data compiled from:

2013 The College Board; 2013 College-Bound Seniors High School Profile Report for Mt. Lebanon High School

**PRELIMINARY SCHOLASTIC ASSESSMENT TEST (PSAT)/
NATIONAL MERIT SCHOLARSHIP QUALIFYING TEST (NMSQT)
DATA**

SUMMARY OF PSAT/NMSQT SCORES OF SEMIFINALISTS AND COMMENDED STUDENTS

This report represents a ten* year summary of the Preliminary Scholastic Assessment Test (PSAT)/National Merit Scholarship Qualifying Test (NMSQT). The scores for both verbal and math sections range from 20 to 80. The total score possible is 240. Designed for students in their junior year, many of the District's sophomores and even some younger students take the PSAT as preparation for the SAT. [The selection index is used for National Merit purposes for juniors only.] Two thirds of the Selection Index is verbal (critical reading and writing scores) and one third is the mathematics score.

Scores are reported both for those selected as Semifinalists and those receiving Commended status.

The following data is a ten* year summary of the total number of National Merit Semifinalists from comparable schools in Pennsylvania. Comparisons with demographically similar local schools offer insight about our top students' performances relative to the performances of top students in other, similar districts. This does not, however, provide an overall reflection of programmatic quality across the spectrum of learners. The number of semifinalists fluctuates year to year depending on a number of variables.

*Ten year summary for previously identified comparable schools in Western Pennsylvania, and a one year comparison for newly identified throughout the state.

NATIONAL MERIT SEMIFINALISTS
10-YEAR COMPARISONS OF SOUTHWESTERN PENNSYLVANIA SCHOOLS
AND 1-YEAR COMPARISON OF COMPARATOR PENNSYLVANIA SCHOOLS
2012-2013 (CLASS OF 2014)

	2005	2006	2007	2008	2009	2010	2011	2012	2013	2014	Total
Bethel Park School District	0	2	3	2	2	4	1	0	1	2	17
Central Bucks School District**									15	12	27
<i>Fox Chapel School District</i>	6	9	14	9	11	7	11	9	17	8	101
Gateway School District	0	3	6	3	2	4	4	0	1	1	24
Great Valley School District									10	2	12
Hampton School District									3	0	3
Lower Merion School District*									23	21	44
Lower Moreland School District									3	3	6
<i>Mt. Lebanon School District</i>	7	13	13	10	8	5	12	7	3	11	89
North Allegheny School District	12	12	8	20	13	15	17	17	27	15	156
Peters Township School District									5	1	5
Radnor School District									24	8	24
South Fayette School District									0	2	2
Taylor Alderdice (Pittsburgh Public School District)	11	9	4	8	8	4	5	12	3	8	72
Tredyffrin-Easttown School District									35	26	61
Unionville-Chadds Ford School District									13	13	26
Upper Dublin School District									11	15	26
Upper St. Clair School District	2	11	7	15	7	10	5	12	14	5	88
Wallingford-Swarthmore School District									12	18	30

*Denotes two (2) high schools

**Denotes three (3) high schools

**MT. LEBANON SCHOOL DISTRICT
NATIONAL MERIT SCHOLARSHIP QUALIFYING TEST (NMSQT) SUMMARY**

Class of	Students in Class	Students Taking the NMSQT	Semi-Finalist Students	Commended Students	Total Semi-Finalists & Commended Students
2005	458	275	7	15	22
2006	474	322	13	18	31
2007	491	322	13	23	36
2008	506	333	10	22	32
2009	490	321	8	22	30
2010	474	286	5	12	17
2011	427	259	12	19	31
2012	447	249	7	13	20
2013	468	295	3	14	17
2014	436	262	11	16	27

The above data is a ten year summary of the National Merit Scholarship Qualifying Test results for Mt. Lebanon High School. These results are based on the Preliminary Scholastic Assessment Test (PSAT) that was given to eleventh graders in October 2012 (2012-13). Semifinalist standing usually represents students scoring within the top 1% of test takers in Pennsylvania and Commended standing within the top 3% in Pennsylvania. It is important to note that National Merit indexes vary from year-to-year and state-to-state.

AMERICAN COLLEGE TEST (ACT) SCORES

2013 AMERICAN COLLEGE TEST (ACT) MEAN SCORES

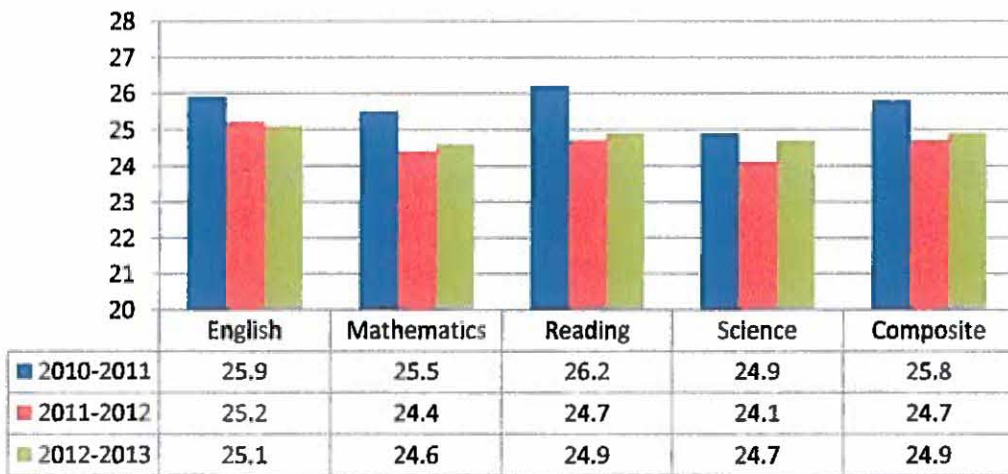
The ACT Assessment is a college admission test in direct competition with the SAT. The ACT Assessment contains four curriculum based tests that measure academic achievement in the areas of English, Mathematics, Reading and Science. The ACT also provides an overall Composite score. In addition to these four curricular areas and the summary composite, students may also opt to complete an additional writing assessment (ACT Plus) new in 2006. The ACT writing component is recommended by our high school counseling staff when students opt to take the ACT.

The ACT is headquartered in Iowa City, Iowa and today its assessment is accepted at all colleges and universities. The SAT currently has a historical foothold in our area of the country, which partially explains why the vast majority of students at Mt. Lebanon take the SAT. However, increasing competition between the ACT and SAT over the last few years has resulted in nation-wide acceptance of both assessment devices. Often Mt. Lebanon students, who do not fare as well as expected on the SAT, will complete the ACT to see if a relatively higher score can be obtained. Concordance tables reflecting SAT to ACT range comparisons are made available to students and families in the high school guidance office. Counselors regularly recommend that college-bound students sit for an ACT during junior or senior year.

The following report shows the mean score for Mt. Lebanon students on the ACT, as well as the mean score for all students in Pennsylvania and nationally who took the ACT. The scores can range from a low of 1 to a high of 36 for each of the sub-tests (English, Mathematics, Reading and Science). This is also true for the overall Composite score.

The number of participants (280) and percentage (63%) of our students taking the ACT in 2012-13 exceeds the participation percentage in the past 10 years. The average ACT composite score for Mt. Lebanon students this year was 24.9.

ACT RESULTS



Data compiled from:

<http://www.pde.state.pa.us>

2013 AMERICAN COLLEGE TEST (ACT) PARTICIPATION RATES & MEAN SCORES

Mt. Lebanon*	# of Students	% of Class		English	Math	Reading	Science	Composite
		Participating						
2003-2004	168	35		24.2	24.6	25.6	24.3	24.8
2004-2005	154	34		24.5	25.0	25.2	23.8	24.7
2005-2006	173	38		25.0	25.3	25.6	24.2	25.1
2006-2007	241	50		25.3	25.7	26.0	25.1	25.6
2007-2008	278	57		25.2	25.2	25.3	24.5	25.2
2008-2009	243	51		25.8	25.1	26.0	25.2	25.6
2009-2010	263	55		25.1	24.3	25.8	24.4	25.1
2010-2011	244	58		25.9	25.5	26.2	24.9	25.8
2011-2012	237	55		25.2	24.4	24.7	24.1	24.7
2012-2013	280	63		25.1	24.6	24.9	24.7	24.9
Pennsylvania								
2003-2004				21.2	21.5	22.3	21.5	21.8
2004-2005				21.2	21.5	22.3	21.4	21.7
2005-2006				21.3	21.7	22.2	21.4	21.8
2006-2007				21.5	21.9	22.4	21.5	22.0
2007-2008				21.8	22.3	22.5	21.6	22.2
2008-2009				21.7	22.2	22.4	21.5	22.1
2009-2010				21.3	22.1	22.1	21.4	21.9
2010-2011				21.9	22.6	22.6	21.8	22.3
2011-2012				22.0	22.7	22.7	21.9	22.4
2012-2013				22.2	23.0	23.0	22.2	22.7
Nation								
2003-2004				20.4	20.7	21.3	20.9	20.9
2004-2005				20.4	20.7	21.3	20.9	20.9
2005-2006				20.6	20.8	21.4	20.9	21.1
2006-2007				20.7	21.0	21.5	21.0	21.2
2007-2008				20.6	21.0	21.4	20.8	21.1
2008-2009				20.6	21.0	21.4	20.9	21.1
2009-2010				20.5	21.0	21.3	20.9	21.0
2010-2011				20.6	21.1	21.3	20.9	21.1
2011-2012				20.5	21.1	21.3	20.9	21.1
2012-2013				20.2	20.9	21.1	20.7	20.9

*MTLSD data compiled from: http://www.pde.state.pa.us/portal/server.pt/community/data_and_statistics/7202/sat_and_act_scores/674663

**Pennsylvania data compiled from: ACT Profile Report - State: Section I, Executive Summary

***Nation data compiled from: ACT Profile Report - National: Section I, Executive Summary

ADVANCED PLACEMENT (AP) SCORES

EXPLANATION AND PRESENTATION OF DATA SOURCES

Summary of 2013 Advanced Placement Scores

Advanced Placement courses follow a prescribed syllabus developed and audited by the College Board. AP courses are designed to equate to the initial year of university study in a given subject. Students who score a 3 or above, out of a possible high score of 5, generally receive advanced placement and/or college credit from colleges and universities. The most competitive colleges and universities often require an AP score of 4 or 5 prior to granting credit.

The following report represents advanced placement scores by course. The report also shows the number of students enrolled in a course versus how many students subsequently chose to participate in testing. It can be difficult to draw a valid analysis of scores due to the discrepancy that often occurs between the number of students taking the class versus those that actually go on to take the test. Students opt not to take the test for a variety of reasons. In some cases, virtually all students enrolled in a given course take the test which assists in drawing valid conclusions about our students' performance and course delivery.

Each AP subject teacher receives an Instructional Planning Report, providing summary data about student performance and related item analysis. Teachers begin reviewing this data in the summer months in preparation for the following school year.

2013 AP TREND DATA BY SUBJECT - Enrollment, Participation and National Comparisons

	2009						2010						2011					
	Stud.	Stud.	%	MTLSD	Nat'l.	Avg.	Stud.	Stud.	%	MTLSD	Nat'l.	Avg.	Stud.	Stud.	%	MTLSD	Nat'l.	Avg.
	Enrolled	Testing	Testing	Avg.	Avg.	Diff.	Enrolled	Testing	Testing	Avg.	Avg.	Diff.	Enrolled	Testing	Testing	Avg.	Avg.	Diff.
Art - Studio	15	8	53.3%	3.75	3.12	0.63	19	15	78.9%	3.80	2.86	0.94	18	17	94.4%	3.52	3.06	0.46
Biology	50	40	80.0%	4.53	2.70	1.83	55	40	72.7%	3.85	2.63	1.22	51	29	56.9%	4.31	2.70	1.61
Calculus BC	36	39	108.3%	4.31	3.70	0.61	48	44	91.7%	4.30	3.84	0.46	36	28	77.8%	4.07	3.78	0.29
Chemistry	51	46	90.2%	4.09	2.77	1.32	52	43	82.7%	3.79	2.72	1.07	38	36	94.7%	4.00	2.77	1.23
Computer Science A	1	1	100.0%	5.00	3.03	1.97	10	7	70.0%	3.14	3.14	0.00	0	0	0.0%	0.00	0.00	0.00
English Lang/Comp (New 2008)	18	11	61.1%	4.46	2.87	1.59	20	9	45.0%	3.89	2.91	0.98	39	23	59.0%	4.57	2.92	1.65
English Lit/Comp	41	19	46.3%	4.32	2.83	1.49	30	24	80.0%	4.21	2.82	1.39	37	15	40.5%	4.27	2.81	1.46
Environmental Science	88	30	34.1%	3.00	2.59	0.41	229	144	62.9%	3.26	2.61	0.65	162	105	64.8%	3.59	2.66	0.93
European History	45	20	44.4%	3.55	2.92	0.63	39	23	59.0%	3.70	2.86	0.84	24	14	58.3%	3.71	2.81	0.90
French Language	12	4	33.3%	4.00	2.63	1.37	16	9	56.3%	3.11	2.59	0.52	12	11	91.7%	3.18	2.78	0.40
German Language	27	20	74.1%	3.30	3.11	0.19	29	11	37.9%	3.73	3.12	0.61	16	11	68.8%	4.09	3.18	0.91
Music Theory (New 2008)	17	2	11.8%	1.50	2.97	-1.47	13	4	30.8%	2.50	3.03	-0.53	19	7	36.8%	3.00	2.96	0.04
Physics - E & M	12	11	91.7%	3.91	3.51	0.40	11	6	54.5%	4.17	3.42	0.75	0	7	0.0%	4.29	3.48	0.81
Physics - Mechanics	31	25	80.6%	4.00	3.26	0.74	27	16	59.3%	3.69	3.36	0.33	59	32	54.2%	3.44	3.38	0.06
Psychology	145	90	62.1%	4.18	3.21	0.97	164	113	68.9%	3.98	3.10	0.88	144	65	45.1%	4.05	3.12	0.93
Spanish Language	55	7	12.7%	3.43	3.31	0.12	67	9	13.4%	3.89	3.38	0.51	61	11	18.0%	3.09	3.22	-0.13
Statistics	84	43	51.2%	3.30	2.82	0.48	45	18	40.0%	3.56	2.82	0.74	95	35	36.8%	3.37	2.81	0.56
U.S. History	97	71	73.2%	3.72	2.72	1.00	75	72	96.0%	3.89	2.72	1.17	55	47	85.5%	3.87	2.75	1.12
U.S. Gov. & Politics	17	9	52.9%	3.78	2.78	1.00	25	16	64.0%	3.94	2.65	1.29	34	16	47.1%	4.19	2.67	1.52
TOTALS	842	496					974	623					900	509				
Overall % Tested	58.9%						64.0%						56.6%					

	2012						2013					
	Stud.	Stud.	%	MTLSD	Nat'l.	Avg.	Stud.	Stud.	%	MTLSD	Nat'l.	Avg.
	Enrolled	Testing	Testing	Avg.	Avg.	Diff.	Enrolled	Testing	Testing	Avg.	Avg.	Diff.
Art - Studio	18	10	55.5%	3.78	3.14	0.64	9	2	22.2%	5.00	3.27	1.73
Biology	73	49	67.1%	4.47	2.73	1.74	34	25	73.5%	3.76	2.88	0.88
Calculus BC	41	36	87.8%	4.53	3.87	0.66	47	43	91.5%	4.63	3.73	0.9
Chemistry	59	52	88.1%	4.37	2.79	1.58	33	31	93.9%	4.26	2.92	1.34
Computer Science A	12	3	25.0%	1.67	3.07	-1.40	24	10	41.7%	2.70	3.21	-0.51
English Lang/Comp (New 2008)	31	15	48.4%	4.27	2.90	1.37	32	20	62.5%	4.10	2.77	1.33
English Lit/Comp	28	14	50.0%	4.93	2.80	2.13	18	10	55.5%	3.90	2.81	1.09
Environmental Science	219	160	73.1%	3.66	2.68	0.98	144	121	84.0%	3.68	2.61	1.07
European History	36	14	38.9%	4.07	2.83	1.24	25	12	48.0%	3.50	2.78	0.72
French Language	17	8	47.1%	4.00	3.35	0.65	16	5	31.25%	4.20	3.37	0.83
German Language	10	5	50.0%	4.20	3.49	0.71	16	8	50.0%	4.13	3.47	0.66
Music Theory (New 2008)	9	3	33.3%	4.00	3.04	0.96	17	8	47.0%	3.38	3.01	0.37
Physics - E & M	14	7	50.0%	4.86	3.57	1.29	21	12	57.0%	4.17	3.45	0.72
Physics - Mechanics	54	29	53.7%	3.86	3.59	0.27	96	44	45.8%	3.64	3.46	0.18
Psychology	123	40	32.5%	4.13	3.13	1.00	175	83	47.4%	4.00	3.17	0.83
Spanish Language	49	3	6.1%	4.00	3.35	0.65	48	4	8.3%	3.25	3.32	-0.07
Statistics	100	21	21.0%	3.95	2.83	1.12	52	27	51.9%	3.48	2.80	0.68
U.S. History	54	52	96.3%	3.92	2.80	1.12	89	83	93.3%	4.16	2.77	1.39
U.S. Gov. & Politics	33	15	45.5%	4.33	2.69	1.64	41	25	60.9%	3.64	2.65	0.99
TOTALS	980	536					937	573				
Overall % Tested	54.7%						61.2%					

Data compiled from: 2013 The College Board: AP Five-Year School Score Summary (2013)

Mt. Lebanon High School
2013 Average AP Scores by Subject

	2004	2005	2006	2007	2008	2009	2010	2011	2012	2013
Art (Studio)	3.75	2.80	3.33	3.89	3.33	3.75	3.80	3.52	3.78	5.00
Biology	4.00	4.15	4.60	4.33	4.23	4.53	3.85	4.31	4.47	3.76
Calculus BC	4.53	4.69	4.51	4.60	4.25	4.31	4.30	4.07	4.53	4.63
Chemistry	4.11	4.21	4.13	4.00	4.27	4.09	3.79	4.00	4.37	4.26
Computer Science A	3.69	3.07	3.92	3.00	3.13	5.00	3.14	NA	1.67	2.70
English Language/Comp	NA	NA	NA	NA	4.24	4.46	3.89	4.57	4.27	4.10
English Lit/Comp	4.08	4.07	4.21	4.06	4.30	4.32	4.21	4.27	4.93	3.90
Environmental Science	2.83	3.03	3.22	3.62	3.02	3.00	3.26	3.59	3.66	3.68
European History	4.17	3.89	4.09	4.09	3.64	3.55	3.70	3.71	4.07	3.50
French Language	3.23	3.27	3.36	3.25	3.74	4.00	3.11	3.18	4.00	4.20
German Language	3.62	3.81	3.39	3.72	3.78	3.30	3.73	4.09	4.20	4.13
Music Theory	NA	NA	NA	NA	4.50	1.50	2.50	3.00	4.00	3.38
Physics- E & M	3.88	4.26	4.22	3.88	4.50	3.91	4.17	4.29	4.86	4.17
Physics - Mechanics	3.95	4.33	3.88	3.97	4.14	4.00	3.69	3.44	3.86	3.64
Psychology	NA	NA	4.26	4.00	3.75	4.18	3.98	4.05	4.13	4.00
Spanish Language	3.25	2.93	2.86	3.67	3.70	3.43	3.89	3.09	4.00	3.25
Statistics	3.92	3.79	3.97	3.36	3.73	3.30	3.56	3.37	3.95	3.48
US History	3.89	4.02	3.88	3.74	3.43	3.72	3.89	3.87	3.92	4.16
US Government & Politics	NA	NA	NA	3.65	3.83	3.78	3.94	4.19	4.33	3.64

SUMMARY OF THE 2013 ADVANCED PLACEMENT SCORE ANALYSIS

On the following pages, advanced placement data is reported on the basis of number and percentage of scores in a given range for the May, 2013 administration. Advanced placement scores can range from a low of 1 to a high of 5. As a general rule, a college/university will require a minimum score of 3 for college credit to be awarded. For highly competitive colleges, a score of 4 may be required. Some of the most competitive colleges do not accept AP scores for credit, but will accept them for advanced placement status. Requirements for granting credit vary from school to school and in some cases, even from department to department at a given college or university. Mt. Lebanon's curriculum supervisors, department chairs, and curriculum facilitators are given the data in these reports each year for departmental analysis.

AP SCORE ANALYSIS BY SUBJECT					
	2008-09	2009-10	2010-11	2011-12	2012-13
ART - STUDIO					
# of 5	2	2	4	4	2
# of 4	3	8	5	0	0
# of 3	2	5	4	3	0
# of 2	1	0	4	3	0
# of 1	0	0	0	0	0
Total Tested	8	15	17	10	2
% of 5	25%	13%	24%	40%	100%
% of 4 and above	63%	67%	53%	40%	0
% of 3 and above	88%	100%	76%	70%	0
BIOLOGY					
# of 5	27	14	15	35	4
# of 4	8	13	10	6	11
# of 3	4	8	3	5	10
# of 2	1	3	0	2	0
# of 1	0	2	1	1	0
Total Tested	40	40	29	49	25
% of 5	68%	35%	52%	71%	16%
% of 4 and above	88%	68%	86%	84%	60%
% of 3 and above	98%	88%	97%	94%	100%
CALCULUS BC					
# of 5	21	24	13	26	32
# of 4	13	12	10	5	7
# of 3	3	5	2	4	3
# of 2	0	3	0	0	1
# of 1	2	0	3	1	0
Total Tested	39	44	28	36	43
% of 5	54%	55%	46%	72%	74%
% of 4 and above	87%	82%	82%	86%	91%
% of 3 and above	95%	93%	89%	97%	98%
CHEMISTRY					
# of 5	18	12	17	29	14
# of 4	19	16	9	16	11
# of 3	5	10	5	4	6
# of 2	3	4	3	3	0
# of 1	1	1	2	0	0
Total Tested	46	43	36	52	31
% of 5	39%	28%	47%	56%	45%
% of 4 and above	80%	65%	72%	87%	81%
% of 3 and above	91%	88%	86%	94%	100%

COMPUTER SCIENCE A					
# of 5	1	2	NA	0	2
# of 4	0	2	NA	0	2
# of 3	0	0	NA	1	1
# of 2	0	1	NA	0	1
# of 1	0	2	NA	2	4
Total Tested	1	7	NA	3	10
% of 5	100%	29%	NA	0%	20%
% of 4 and above	100%	57%	NA	0%	40%
% of 3 and above	100%	57%	NA	33%	50%
ENGLISH LANG/COMP					
# of 5	7	2	14	7	6
# of 4	3	4	8	5	10
# of 3	0	3	1	3	4
# of 2	1	0	0	0	0
# of 1	0	0	0	0	0
Total Tested	11	9	23	15	20
% of 5	64%	22%	61%	47%	30%
% of 4 and above	91%	67%	96%	80%	80%
% of 3 and above	91%	100%	100%	100%	100%
ENGLISH LIT/COMP					
# of 5	9	10	7	13	3
# of 4	7	9	5	1	4
# of 3	3	5	3	0	2
# of 2	0	0	0	0	1
# of 1	0	0	0	0	0
Total Tested	19	24	15	14	10
% of 5	47%	42%	47%	93%	30%
% of 4 and above	84%	79%	80%	100%	70%
% of 3 and above	100%	100%	100%	100%	90%
ENVIRONMENTAL SCIENCE					
# of 5	2	18	21	26	29
# of 4	8	52	41	76	47
# of 3	11	36	22	38	23
# of 2	6	26	21	18	21
# of 1	3	12	0	2	1
Total Tested	30	144	105	160	121
% of 5	7%	13%	20%	16%	24%
% of 4 and above	33%	49%	59%	64%	63%
% of 3 and above	70%	74%	80%	88%	82%

EUROPEAN HISTORY					
# of 5	3	5	4	4	2
# of 4	7	6	6	7	4
# of 3	9	12	1	3	5
# of 2	0	0	2	0	0
# of 1	1	0	1	0	1
Total Tested	20	23	14	14	12
% of 5	15%	22%	29%	29%	17%
% of 4 and above	50%	48%	71%	79%	50%
% of 3 and above	95%	100%	79%	100%	92%
FRENCH LANGUAGE					
# of 5	2	1	0	3	2
# of 4	1	1	5	2	2
# of 3	0	5	3	3	1
# of 2	1	2	3	0	0
# of 1	0	0	0	0	0
Total Tested	4	9	11	8	5
% of 5	50%	11%	0%	38%	40%
% of 4 and above	75%	22%	45%	63%	80%
% of 3 and above	75%	78%	73%	100%	100%
GERMAN LANGUAGE					
# of 5	1	3	2	2	3
# of 4	7	4	8	2	3
# of 3	9	2	1	1	2
# of 2	3	2	0	0	0
# of 1	0	0	0	0	0
Total Tested	20	11	11	5	8
% of 5	5%	27%	18%	40%	38%
% of 4 and above	40%	64%	91%	80%	75%
% of 3 and above	85%	82%	100%	100%	100%
MUSIC THEORY					
# of 5	0	0	0	2	2
# of 4	0	0	3	0	1
# of 3	0	3	2	0	3
# of 2	1	0	1	1	2
# of 1	1	1	1	0	0
Total Tested	2	4	7	3	8
% of 5	0%	0%	0%	67%	25%
% of 4 and above	0%	0%	43%	67%	38%
% of 3 and above	0%	75%	71%	67%	75%

PHYSICS - E & M					
# of 5	2	3	4	6	7
# of 4	7	1	1	1	2
# of 3	1	2	2	0	1
# of 2	1	0	0	0	2
# of 1	0	0	0	0	0
Total Tested	11	6	7	7	12
% of 5	18%	50%	57%	86%	58%
% of 4 and above	82%	67%	71%	100%	75%
% of 3 and above	91%	100%	100%	100%	92%
PHYSICS - MECHANICS					
# of 5	7	4	10	12	7
# of 4	13	6	5	6	18
# of 3	3	4	8	7	16
# of 2	2	1	7	3	2
# of 1	0	1	2	1	1
Total Tested	25	16	32	29	44
% of 5	28%	25%	31%	41%	16%
% of 4 and above	80%	63%	47%	62%	57%
% of 3 and above	92%	88%	72%	86%	93%
PSYCHOLOGY (New in 2006)					
# of 5	39	32	23	17	32
# of 4	34	55	25	12	30
# of 3	13	18	14	10	14
# of 2	2	8	3	1	3
# of 1	2	0	0	0	4
Total Tested	90	113	65	40	83
% of 5	43%	28%	35%	43%	39%
% of 4 and above	81%	77%	74%	73%	75%
% of 3 and above	96%	93%	95%	98%	92%
SPANISH LANGUAGE					
# of 5	1	1	1	1	0
# of 4	2	7	3	1	1
# of 3	3	0	4	1	3
# of 2	1	1	2	0	0
# of 1	0	0	1	0	0
Total Tested	7	9	11	3	4
% of 5	14%	11%	9%	33%	0%
% of 4 and above	43%	89%	36%	67%	25%
% of 3 and above	86%	89%	73%	100%	100%

STATISTICS					
# of 5	5	7	6	8	3
# of 4	14	3	11	7	13
# of 3	14	2	9	3	7
# of 2	9	5	8	3	2
# of 1	1	1	1	0	2
Total Tested	43	18	35	21	27
% of 5	12%	39%	17%	38%	11%
% of 4 and above	44%	56%	49%	71%	59%
% of 3 and above	77%	67%	74%	86%	85%
U.S. GOV & POLITICS (new in 07)					
# of 5	1	6	9	7	6
# of 4	5	5	2	6	7
# of 3	3	3	4	2	9
# of 2	0	2	1	0	3
# of 1	0	0	0	0	0
Total Tested	9	16	16	15	25
% of 5	11%	38%	56%	47%	24%
% of 4 and above	67%	69%	69%	87%	52%
% of 3 and above	100%	88%	94%	100%	88%
U.S. HISTORY					
# of 5	16	22	14	17	36
# of 4	29	28	19	18	28
# of 3	16	16	8	13	15
# of 2	10	4	6	4	4
# of 1	0	2	0	0	0
Total Tested	71	72	47	52	83
% of 5	23%	31%	30%	33%	43%
% of 4 and above	63%	69%	70%	67%	77%
% of 3 and above	86%	92%	87%	92%	95%
TOTAL	2008-09	2009-10	2010-2011	2011-2012	2012-2013
# of 5	164	168	164	219	192
# of 4	180	232	176	171	201
# of 3	99	139	96	101	125
# of 2	42	62	61	38	42
# of 1	11	22	12	7	13
Total Tested	496	623	509	536	573
% of 5	33%	27%	32%	41%	34%
% of 4 and above	69%	64%	67%	73%	69%
% of 3 and above	89%	87%	86%	92%	90%
Data compiled from: 2013 The College Board; AP Current Year Score Summary (2013)					

PERCENTAGE OF STUDENTS SCORING A 3, 4, OR 5 ON AP EXAMS

ACADEMIC YEAR	MT. LEBANON	PENNSYLVANIA	NATIONAL
2012-2013	*89.2%	68.3%	60.8%

*Note: Percentage includes results for students who took an advanced placement test not included in the Mt. Lebanon Curriculum (e.g., AP AB Calculus, Chinese, etc.)

AP EQUITY AND EXCELLENCE TREND DATA

Academic Year	2007-2008	2008-2009	2009-2010	2010-2011	2011-2012	2012-13
10TH*	1.9%	4.0%	4.3%	3.7%	6.8%	7.2%
11TH*	24.3%	20.6%	30.7%	24.5%	37.6%	34.3%
12TH*	36.6%	35.6%	37.8%	35.6%	25.6%	32.4%
GRADUATING CLASS SUMMARY**	45.5%	43.3%	45.5%	46.4%	35.5%	46.9%

*These measures indicate the percentage of students enrolled in grades 10, 11 and 12 scoring a 3 or higher on at least one AP exam during the prior year divided by the total number of students in the respective grade.

**The Graduating Class Summary represents the percentage of twelfth graders scoring a 3 or higher on at least one AP exam at any point in their high school careers divided by the total number of the school's services.

Data compiled from: 2013 The College Board; AP Equity and Excellence (2013)

EARLY GRADUATION INFORMATION

NUMBER OF STUDENTS WHO GRADUATED EARLY

The below data indicates the number of students who chose to graduate early over the past ten years. Although all graduation credit requirements are met at the end of junior year or in January of a student's senior year, early graduates participate in June's commencement program and receive their diplomas with their respective graduating class.

2003	6
2004	7
2005	12
2006	7
2007	10
2008	10
2009	5
2010	10
2011	2
2012	4
2013	3

POST GRADUATION ACTIVITIES

POST GRADUATION ACTIVITIES FOR THE CLASS OF 2013

The following data is submitted to the state of Pennsylvania each year. The report summarizes the post high school activity of our graduating class of 2013. For the Class of 2013, the data indicates a comparable number of students attending 4-year colleges or universities and an increase in the number of students attending 2-year colleges from the previous year. This is a trend that we are monitoring closely. Reasons for this change may have included the national economic downturn coupled with the continuing rise of tuition costs at 4-year institutions. Additionally, students and families may have been seeking a phased approach to their post-secondary educations, with students attending more cost effective 2-year educational options with full intent of transferring to a 4-year educational option at a later date.

This year's data seems to indicate an increased affinity for state public and state affiliated schools. In fact, attendance at these institutions as a percentage is the highest in the last ten years. These institutions include the higher education system of Pennsylvania as well as The Pennsylvania State University, the University of Pittsburgh and Temple University.

MTL Post Graduation Activities Summary

Class of 2013

	#	%
4-Year College & University	385	86%
2-Year College	36	8%
Total College-Bound Grads	421	94%
Technical Institute or Specialized Training	9	2%
Employment	13	3%
Armed Services	5	1%
Grand Total	448	100.0%

SCHOOLS ATTENDED BY MTL's CLASS of 2013

Allegheny College	LaRoche College	University of Hartford
American University	Lake Erie College	University of Kentucky
Amherst College	Lehigh University	University of Maryland-Coll. Prk.
Arcadia University	Loyala University	University Of Massachusetts-Am.
Art Institute of Pittsburgh	Marshall University	University of Michigan
Ashland University	McGill University (Canada)	University of Missouri
Bard College	Mercyhurst College	University of Mount Union
Beloit College	Miami University of Ohio	Univ. of NC - Wilmington
Bloomsburg University	Muhlenberg College	University of Notre Dame
Boston College	Nazareth College	University of Pennsylvania
Bowling Green State University	New York University	Univ. of Pittsburgh - Bradford
Brown University	Northwestern University	Univ. of Pittsburgh - Greensburg
Bucknell University	Oberlin College	Univ. of Pittsburgh - Johnstown
CA College of Arts	Ohio State University	Univ. of Pittsburgh - Titusville
California Institute of Technology	Ohio Tech College	Univ. of Pittsburgh
California University of PA	Ohio University	University of Richmond
Carnegie Mellon University	Pace University	University of Toronto
Case Western Reserve University	Penn. State University	Utah State University
Catholic University of America	Penn State University - Beaver	Vanderbilt University
Clarion University	Penn State University - Behrend	Vassar College
Coastal Carolina University	Penn State University - Fayette	Villanova University
College of Charleston	Penn State Univ - Grtr Allegheny	Virginia Tech University
College of Wooster	Pittsburgh Technical Institute	Wake Forest University
Community College of Allegh. Cnty.	Point Park University	Washington & Jefferson College
Cornell University	Princeton University	Washington University-St. Louis
Culinary Institute of America	Purdue University	Wellesley College
Dance - New York	Rensselaer Polytechnic Institute	Wesleyan University
Denison University	Rice University	West Virginia University
DePaul University	Robert Morris University	Westminster College
Dickinson College	Rochester Institute of Technology	Whitman College
Drexel University	Roosevelt University	Wittenberg University
Duquesne University	San Diego Mesa College	WYO Tech
Edinboro University	Seton Hill University	Yale University
Elon University	Slippery Rock University	
Florida Gulf Coast University	Special Education Workshop Fac.	
Florida State University	St. Boneventure University	
Foothill College, 2 year, California	St. Joseph's University	
Fordham University	St. Mary's College	
George Washington University	St. Vincent College	
Georgetown University	Stanford University	
Grove City College	SUNY - Binghamton University	
Hamilton College	SUNY - Fredonia	
High Point University	Temple University	
Indiana University of Pennsylvania	US Naval Academy - Annapolis	
Ithaca College	University of Akron	
James Madison University	University of California-San Diego	
John Carroll University	University of Central Florida	
Johns Hopkins University	University of Cincinnati	
Johnson & Wales University	University of Colorado - Boulder	
Junata College	University of Dayton	
Kent State University	University of Delaware	
Kenyon College	University of Findlay	

ANALYSIS OF COLLEGE BY COMPETITIVENESS

ANALYSIS OF COLLEGE ATTENDANCE BY COMPETITIVENESS

The following reports give the number and percentage of students from the class of 2013 attending 4-year colleges or universities by level of competitiveness. The level of competitiveness is taken from Barron's Guide to Colleges to ensure a level of objectivity in review. The report demonstrates that 51 students (12.3%) from last year's graduating class are attending a 4-year college or university that is classified as "the most competitive" in the country. The percentage of students attending the top two categories (33.5%), most competitive and highly competitive combined, is consistent with the prior year. The total percentage of students attending the top three tiers of schools (63.3%) represents a slight increase from the prior year.

This year's report shows that a consistent percentage of Mt. Lebanon students are being admitted at rigorous, competitive post-secondary institutions. This accomplishment continues to be significant given the environment for admission to top tier colleges has increased significantly in competitiveness over the past two decades. Because of this increased competition, one area of possible concern that will be carefully monitored over the next few years is the number and percentage of students getting into the most competitive and highly competitive colleges and universities. In general, national acceptance rates at these institutions have declined significantly in the last two decades. Data related to the percentage of students opting for state affiliated and public, state schools will also be closely scrutinized in coming years.

2013 TREND DATA: COLLEGE ATTENDANCE BY COLLEGE COMPETITIVENESS

	2004			2005			2006			2007			2008	
	#	%		#	%		#	%		#	%		#	%
Most Competitive	64	15.5%		62	16.0%		71	17.3%		53	12.4%		64	15.1%
Highly Competitive	125	30.3% *		109	28.2% *		140	34.1% *		147	34.3% *		87	20.5%
Very Competitive	101	24.5%		71	18.3%		82	20.0%		82	19.2%		124	29.2%
Competitive	98	23.7%		108	27.9%		102	24.8%		114	26.6%		118	27.8%
Less Competitive	23	5.6%		36	9.3%		15	3.6%		23	5.4%		25	5.9%
Non Competitive	1	0.2%		0	0.0%		0	0.0%		3	0.7%		4	0.9%
Specialized	1	0.2%		1	0.3%		1	0.2%		6	1.4%		2	0.5%
TOTAL	413	100.0%		387	100.0%		411	100.0%		428	100.0%		424	100.0%

	2009			2010			*			2012			2013	
	#	%		#	%		#	%		#	%		#	%
Most Competitive	60	14.8%		57	13.9%		58	15.5%		45	11.1%		51	12.3%
Highly Competitive	114	28.1%		77	18.8%		64	17.1%		68	16.8%		88	21.2%
Very Competitive	97	24.0%		115	28.0%		103	27.5%		100	24.7%		124	29.8%
Competitive	102	25.2%		128	31.2%		98	26.2%		128	31.6%		94	22.6%
Less Competitive	22	5.4%		24	5.9%		15	4.0%		56	13.8%		18	4.3%
Non Competitive	3	0.7%		3	0.7%		35	9.4%		4	1.0%		32	7.7%
Specialized	7	1.7%		6	1.5%		1	0.3%		4	1.0%		9	2.2%
TOTAL	405	100.0%		410	100.0%		374	100.0%		405	100.0%		416	100.0%

NOTE: Analysis is in terms of graduates attending 4-year colleges/universities only (405) not the entire graduating class

* This number reflects Barron's upward reclassification of The Pennsylvania State University to "Highly Competitive" from "Very Competitive" from 2004 through 2007.

**2013 Trend Data: MTL Graduates College Attendance by College Competitiveness
(Barron's Guide)**

	2004		2005		2006		2007		2008	2009	2010	2011	2012	2013	<i>PSU RECLASS. IMPACT</i>
Most Competitive	15.5%		16.0%		17.2%		12.4%		15.1%	14.8%	13.9%	15.5%	11.1%	12.3%	<i>13.9%</i>
Highly Competitive	30.3%	*	28.2%	*	34.1%	*	34.4%	*	20.5%	28.1%	18.8%	17.1%	16.8%	21.2%	<i>28.3%</i>
Very Competitive	24.5%		18.3%		19.9%		19.2%		29.2%	24.0%	28.0%	27.5%	24.7%	29.8%	<i>18.5%</i>
Top 2 Tiers	45.8%		44.2%		51.3%		46.8%		35.6%	42.9%	32.7%	32.6%	27.9%	33.5%	<i>42.2%</i>
Top 3 Tiers	70.3%		62.5%		71.2%		66.0%		64.8%	66.9%	60.7%	60.1%	52.6%	63.3%	<i>60.7%</i>

NOTE: Analysis is in terms of graduates attending 4-year colleges or universities only - not the entire graduating class

* This number reflects Barron's upward reclassification of The Pennsylvania's State University to "Highly Competitive" from "Very Competitive" from 2004 through 2007.

COLLEGE ADMISSIONS SELECTOR

This index groups all the colleges listed in this book according to degree of admissions competitiveness. The Selector is not a rating of colleges by academic standards or quality of education; it is rather an attempt to describe, in general terms, the situation a prospective student will meet when applying for admission.

THE CRITERIA USED

The factors used in determining the category for each college were: median entrance examination scores for the 2003-2004 freshman class (the SAT I score used was derived by averaging the median verbal reasoning and the median mathematics reasoning scores; the ACT score used was the median composite score); percentages of 2003-2004 freshmen scoring 500 and above and 600 and above on both the verbal reasoning and mathematics reasoning sections of the SAT I; percentages of 2003-2004 freshmen scoring 21 and above and 27 and above on the ACT; percentage of 2003-2004 freshmen who ranked in the upper fifth and the upper two-fifths of their high school graduating classes; minimum class rank and grade point average required for admission (if any); and percentage of applicants to the 2003-2004 freshman class who were accepted. The Selector cannot and does not take into account all the other factors that each college considers when making admissions decisions. Colleges place varying degrees of emphasis on the factors that comprise each of these categories.

USING THE SELECTOR

To use the Selector effectively the prospective student's records should be compared realistically with the freshmen enrolled by the

colleges in each category, as shown by the SAT I or ACT scores, the quality of high school record emphasized by the colleges in each category, and the kinds of risks that the applicant wishes to take.

The student should also be aware of what importance a particular school places on various nonacademic factors, when available, this information is presented in the profile of the school. If a student has unusual qualifications that may compensate for exam scores or high school record, the student should examine admissions policies of the colleges in the next higher category than the one that encompasses his or her score and consider those colleges that give major consideration to factors other than exam scores and high school grades. The "safety" college should usually be chosen from the next lower category, where the student can be reasonably sure that his or her scores and high school record will fall above the median scores and records of the freshmen enrolled in the college.

The listing within each category is alphabetical and not in any qualitative order. State-supported institutions have been classified according to the requirements for state residents, but standards for admission of out-of-state students are usually higher. Colleges that are experimenting with the admission of students of higher potential but lower achievement may appear in a less competitive category because of this fact.

A WORD OF CAUTION

The Selector is intended primarily for preliminary screening, to eliminate the majority of colleges that are not suitable for a particular student. Be sure to examine the admissions policies spelled out in the Admissions section of each profile. And remember that many colleges have to reject qualified students; the Selector will tell you what your chances are, not which college will accept you.

MOST COMPETITIVE

Even superior students will encounter a great deal of competition for admission to the colleges in this category. In general, these colleges require high school rank in the top 10% to 20% and grade averages of A to B+. Median freshman test scores at these colleges

are generally between 655 and 800 on the SAT I and 29 and above on the ACT. In addition, many of these colleges admit only a small percentage of those who apply—usually fewer than one third

Amherst College, MA
Bates College, ME
Boston College, MA
Bowdoin College, ME
Brander University, MA
Brown University, RI
California Institute of Technology, CA
Carleton College, MN
Carnegie Mellon University, PA
Case Western Reserve University, OH
Claremont McKenna College, CA
Colby College, ME
Colgate University, NY
College of New Jersey, The, NJ
College of the Holy Cross, MA
College of William and Mary, VA
Columbia University/Barnard College, NY
Columbia University/Columbia College, NY
Columbia University/Fu Foundation School of Engineering and Applied Science, NY
Connecticut College, CT
Cooper Union for the Advancement of Science and Art, NY
Cornell University, NY
Dartmouth College, NH
Davidson College, NC
Duke University, NC
Emory University, GA
George Washington University, DC
Georgetown University, DC
Hamilton College, NY
Harvard University/Harvard College, MA

Harvey Mudd College, CA
Haverford College, PA
Johns Hopkins University, MD
Lafayette College, PA
Macalester College, MN
Massachusetts Institute of Technology, MA
Middlebury College, VT
New York University, NY
Northwestern University, IL
Oberlin College, OH
Pomona College, CA
Princeton University, NJ
Reed College, OR
Rice University, TX
Stanford University, CA
Swarthmore College, PA
Tufts University, MA
United States Coast Guard Academy, CT
United States Military Academy, NY
United States Naval Academy, MD
University of California at Berkeley, CA
University of California at Los Angeles, CA
University of Chicago, IL
University of Florida, FL
University of North Carolina at Chapel Hill, NC
University of Notre Dame, IN
University of Pennsylvania, PA
University of Richmond, VA
University of Southern California, CA
University of Virginia, VA
Vanderbilt University, TN

VERY COMPETITIVE

The colleges in this category generally admit students whose averages are no less than B- and who rank in the top 35% to 50% of their graduating class. They generally report median freshman test scores in the 573 to 619 range on the SAT I and from 24 to 26 on the ACT. These schools generally accept between one half and three quarters of their applicants.

The plus (+) has been placed before colleges with median freshman scores of 610 or above on the SAT I or 26 or better on the ACT depending on which test the college prefers; and colleges that accept fewer than one third of their applicants.

Adelphi University TX
Adelphi University NY
Adelphi College of Idaho ID
Adelphi College MO
Adelphi College PA
Adelphi College MI
+Adelphi University DC
Adelphi State University NC
Adelphi College NY
Adelphi University AL
+Augustine College IL
Augustine College SD
Adelphi Pacific University CA
Adelphi University IS
Adelphi University TX
Adelphi University NY
Adelphi University TN
Adelphi College MA
+Adelphi College NY
Adelphi College GA
Adelphi College WI
Adelphi College MO
Adelphi University CA
+Birmingham-Southern College AL
Bradley University IL
+Bridgman Young University Indiana IN
Bryant College TN
Bryant College IL
+Bryant University IN
California Polytechnic State University CA
Campbell University NC
Carnegie College MT
Catholic University of America DC
Cedarville University OH
+Centenary College of Louisiana LA
Chapman University CA
+Chatham College VA
Christian Brothers University TN
Christopher Newport University VA
+City University of New York, Baruch College NY
Clark University MA
Clarkson University NY
Coe College IA
College of Saint Benedict MN
College of Saint Catherine MN
+College of the Atlantic ME
+College of the District MO
Colorado Christian University CO
Colorado State University CO
Concordia College NY
+Concordia College, Massachusetts MA
Converse College SC
+Cortland College IA
+Cortland College GA
+Creighton University NE
Dallas Baptist University TX
David Lipscomb University TN
DePaul University IL
DePaul University LA
DePaul College IA
+DePaul University IA
Drew University College of Liberal Arts NJ
Drexel University PA
+Drexel University MO
Duquesne University PA
+Eastern College IN
Eastern College NY

Edin University NC
Edin College SC
+Edin College IL
Florida Institute of Technology FL
Florida International University FL
Franklin University of Steubenville OH
George Fox University OR
George Mason University VA
Georgetown College KY
+Gordon College MA
Goshen College IN
Grace College IN
Grand Valley State University MI
Guilford College NC
+Guilford College MA
Hampshire University MA
Hampshire College MA
+Hampshire College MA
Hartwick University NY
Hastings College NE
+Hastings College AR
Hartwick College OH
Hartwick University NY
Hartwick University VA
Hood College MD
Hope College MI
Houghton College NY
Huntington College AL
Illinois College IL
Indiana University Bloomington IN
Iona College NY
Iowa State University IA
James Madison University VA
John Brown University AR
Juniper College PA
Kansas State University KS
Kansas Wesleyan University KS
King College TN
+Knox College IL
La Salle University PA
Lake Forest College IL
Le Moyne College NY
Lebanon Valley College PA
Lewis and Clark College OR
Lindenwood University MO
Lincoln College OR
Louisiana State University and Agricultural and Mechanical College LA
Loyola Marymount University CA
Loyola University Chicago IL
+Loyola University New Orleans LA
Luther College IA
Lyon College AR
Marquette University MI
Marquette University of Management VA
Marquette College NY
Marquette College NY
Marquette University WI
Marquette College TN
Marquette University of Saint Louis MO
Marquette College and Seminary TN GA
McDaniel College MD
McDonnell College IL
McDonnell College GA
+McDonnell College GA
McDonnell College PA
McDonnell State University MO

COMPETITIVE

This category is a very broad one, covering colleges that generally have median freshman test scores between 500 and 572 on the SAT I and between 21 and 23 on the ACT. Some of these colleges require that students have high school averages of B- or better, although others state a minimum of C+ or C. Generally, these colleges prefer students in the top 50% to 65% of the

graduating class and accept between 75% and 85% of their applicants.

Colleges with a plus (+) are those with median freshman SAT I scores of 563 or more or median freshman ACT scores of 24 or more (depending on which test the colleges prefer), and those that admit fewer than half of their applicants.

Adams State College, CO
Adrian College, MI
Alabama State University, AL
Albion State University, AL
+ Albany State University, GA
Albright College, PA
Alcorn State University, MS
Alderson-Broaddus College, WV
Alfred University, NY
Alice Lloyd College, KY
Alliant International University, CA
Averno College, WI
Andrews University, MI
Antioch College, OH
Aquinas College, MI
Arcadia University, PA
Arizona State University-Main, AZ
Arkansas State University, AR
Arkansas Tech University, AR
Armstrong Atlantic State University, GA
Ashland University, OH
Assumption College, MA
Atlantic Union College, MA
Augustine College, MN
Augustine State University, GA
Aurora University, IL
Avis University, MO
Baldwin-Wallace College, OH
Ball State University, IN
Barton College, NC
Baylor Path College, MA
+ Bethany College, MS
Belmont Abbey College, NC
Bemidji State University, MN
Benedictine College, KS
Benedictine University, IL
Bennett College, NC
Bethel College, IN
+ Bethel College, KS
Bethel College, TN
Blackburn College, IL
Bloomsburg University of Pennsylvania, PA
Blue Mountain College, MS
Bluefield College, VA
Bluffton College, OH
Bonanza College, NY
+ Bowie State University, MD
Bowling Green State University, OH
Brenau University Women's College, GA
Breida University, KY
Brick Cliff University, IA
Bridgewater College, VA
Bridgewater State College, MA
Buena Vista University, IA
Cabot College, PA
California Baptist University, CA
California Maritime Academy, CA
+ California State Polytechnic University, Pomona, CA
California State University, Fullerton, CA
+ California State University, Long Beach, CA
California State University, Los Angeles, CA
California State University, Sacramento, CA
California State University, Stanislaus, CA
California University of Pennsylvania, PA
Campbellsville University, KY
+ Canisius College, NY
Capital University, OH
Capitol College, MD
Cardinal Stritch University, WI
Carlos Albizu University, FL

Carlow College, PA
Carroll College, WI
Carson-Newman College, TN
Carthage College, WI
Castleton State College, VT
Catawba College, NC
Cazenovia College, NY
+ Cedar Crest College, PA
Central College, IA
Central Connecticut State University, CT
Central Methodist College, MO
Central Michigan University, MI
Central Missouri State University, MO
+ Central State University, OH
Central Washington University, WA
Champlain College, VT
Charleston Southern University, SC
+ Chatham College, PA
Cheyney University of Pennsylvania, PA
+ Chicago State University, IL
Christian Heritage College, CA
+ Citadel, The, SC
+ City University of New York/Brooklyn College, NY
+ City University of New York/City College, NY
+ City University of New York/Hunter College, NY
City University of New York/John Jay College of Criminal Justice, NY
City University of New York/Queens College, NY
+ Clarion University, SC
+ Clark Atlanta University, GA
Clarke College, IA
Clarison College, NE
Coastal Carolina University, SC
Coker College, SC
College of the Holy Spirit, PA
College of Mount Saint Vincent, NY
College of Mount St. Joseph, OH
College of New Rochelle, NY
College of Notre Dame of Maryland, MD
College of Our Lady of the Elms, MA
College of Saint Elizabeth, NJ
College of Saint Joseph, VT
College of Saint Mary, NE
College of Saint Rose, NY
+ College of Saint Scholastica, MN
+ College of Santa Fe, NM
+ College of the Southwest, NM
Columbia College, MO
Columbia Union College, MD
Columbia University/School of General Studies, NY
Columbus State University, GA
Concord College, WV
Concordia University, CA
Concordia University, MI
Concordia University, OR
+ Concordia University Nebraska, NE
Concordia University Wisconsin, WI
Concordia University River Forest, IL
Concordia University/St. Paul, MN
Consema University and Grand Rapids Theological Seminary, MI
Crichton College, TN
Culver Station College, MO
Cumberland College, IN
Cumberland University, TN
Daemen College, NY
Dakota State University, SD
Dakota Wesleyan University, SD
Dana College, NE
Daniel Webster College, NH

- Midland Lutheran College NE
 Midway College KY
 Millersville University of Pennsylvania PA
 •Milligan College TN
 Millikin University IL
 Mississippi College MS
 Mississippi State University MS
 Missouri Baptist University MO
 Missouri Southern State University MO
 Missouri Valley College MO
 Mitchell College CT
 Molloy College NY
 Monmouth College IL
 Monmouth University NJ
 Montana State University-Billings MT
 Montana State University-Bozeman MT
 Montclair State University NJ
 Montreat College NC
 Morehead State University KY
 Morehouse College GA
 Morgan State University MD
 Morningstar College IA
 Mount Mary College WI
 Mount Mercy College IA
 Mount Saint Mary College NY
 Mount Saint Mary's College MD
 Mount Union College OH
 Mount Vernon Nazarene University OH
 Mustangum College OH
 •Nebraska Wesleyan University NE
 New Mexico State University NM
 Newbury College MA
 Newman University KS
 Niagara University NY
 North Carolina Wesleyan College NC
 North Central University MN
 North Dakota State University ND
 North Georgia College and State University GA
 North Park University IL
 Northern Arizona University AZ
 Northern Illinois University IL
 Northern Michigan University MI
 •Northland College WI
 Northwest Christian College OR
 Northwest College WA
 Northwest Missouri State University MO
 •Northwestern College MN
 •Northwestern College of Iowa IA
 Northwood University FL
 Notre Dame College OH
 Nova Southeastern University FL
 Nyack College NY
 Oakland University MI
 Oakwood College AL
 Ohio Dominican University OH
 Ohio University OH
 •Ohio Valley College WV
 Oklahoma Panhandle State University OK
 Old Dominion University VA
 •Oliver College MI
 Oliver Nazarene University IL
 Oral Roberts University OK
 Oregon Institute of Technology OR
 Oregon State University OR
 Otterbein College OH
 Our Lady of Holy Cross College LA
 Our Lady of the Lake University of San Antonio TX
 •Pacific Union College CA
 Pacific University OR
 Palm Beach Atlantic University FL
 •Park University MO
 Penn State University at Erie/Belvidere College PA
 Penn State University/Altoona PA
 Pfeiffer University NC
 Philadelphia Biblical University PA
 Philadelphia University PA
 Piedmont College GA
 Point Park University PA
 Portland State University OR
 Prescott College AZ
 •Principia College IL
 Queens University of Charlotte NC
 Quincy University IL
 Radford University VA
 Randolph-Macon College VA
 Regis College MA
 •Regis University CO
 Reinhardt College GA
 Rhode Island College RI
 Rider University NJ
 Rivier College NH
 Roanoke College VA
 Robert Morris University PA
 •Roberts Wesleyan College NY
 Rochester College MI
 •Rockhurst University MO
 Rocky Mountain College MT
 Roger Williams University RI
 Rosemont College PA
 Russell Sage College NY
 •Rust College MS
 Sacred Heart University CT
 Saginaw Valley State University MI
 Saint Ambrose University IA
 Saint Andrews Presbyterian College NC
 Saint Anselm College NH
 Saint Cloud State University MN
 Saint Edward's University TX
 Saint John Fisher College NY
 Saint John's University NY
 Saint Joseph College CT
 Saint Joseph's College IN
 Saint Joseph's College of Maine ME
 Saint Joseph's College, New York, Brooklyn Campus
 Saint Joseph's College, New York, Suffolk Campus
 Saint Leo University FL
 Saint Martin's College WA
 Saint Mary-of-the-Woods College IN
 Saint Mary's University of Minnesota MN
 Saint Mary's University of San Antonio TX
 Saint Norbert College WI
 Saint Xavier University IL
 Salem International University WV
 Salem State College MA
 Salve Regina University RI
 Sam Houston State University TX
 San Diego State University CA
 San Francisco State University CA
 San Jose State University CA
 Schreiner University TX
 Seton Hill University PA
 •Shaw University NC
 Shepherd College WV
 Shippensburg University of Pennsylvania PA
 Shorter College GA
 Sierra Nevada College NV
 Simpson College CA
 •Simpson College IA
 Sonoma State University CA
 •South Dakota School of Mines and Technology SD
 South Dakota State University SD
 Southeast Missouri State University MO
 Southeastern Oklahoma State University OK
 Southern Adventist University TN
 Southern Arkansas University AR
 Southern Connecticut State University CT
 Southern Illinois University Carbondale IL
 Southern Illinois University Edwardsville IL
 Southern New Hampshire University NH
 Southern Oregon University OR
 Southern Utah University UT
 Southern Wesleyan University SC
 Southwest Baptist University MO
 Southwest Missouri State University MO
 Southwestern Adventist University TX
 Southwestern College KS
 Southwestern Oklahoma State University OK
 Spalding University KY
 •Spelman College GA
 Spring Arbor University MI
 Springfield College MA
 State University of New York at Oswego NY
 State University of New York at Potsdam NY
 State University of New York College at Brockport NY
 State University of New York College at Buffalo NY
 State University of New York College at Cortland NY

LESS COMPETITIVE

Included in this category are colleges with median freshman test scores generally below 500 on the SAT I and below 21 on the ACT; some colleges that require entrance examinations but do not report

median scores, and colleges that admit students with averages generally below C who rank in the top 65% of the graduating class. These colleges usually admit 85% or more of their applicants.

- Alabama Agricultural and Mechanical University AL
 Alcorn Magdon College, CT
 Alvernia College, PA
 American Indian College of the Assemblies of God, AZ
 American International College, MA
 Anderson University, IN
 Anna Maria College, MA
 Aquinas College, TN
 Austin Peay State University, TN
 Averett University, VA
 Barber-Scholls College, NC
 Berry University, FL
 Beacon College, FL
 Becker College, MA
 Benedict College, SC
 Bethel College, NY
 Bethel College of New York City, NY
 Bethany College, KS
 Bethune-Cookman College, FL
 Black Hills State University, SD
 Bloomfield College, NJ
 Bowdoin State College, WV
 Boise State University, ID
 Bowdon-Parker College, GA
 Caldwell College, NJ
 California Lutheran University, CA
 California State University, Bakersfield, CA
 California State University, Chico, CA
 California State University, Dominguez Hills, CA
 California State University, Fresno, CA
 California State University, Hayward, CA
 California State University, Monterey Bay, CA
 California State University, Northridge, CA
 California State University, San Bernardino, CA
 California State University, San Marcos, CA
 Calumet College of St. Joseph, IN
 Centenary College, NJ
 Chambridge University of Honolulu, HI
 Chestnut Hill College, PA
 City University of New York, Harbor H. Lehman College, NY
 Clarion University of Pennsylvania, PA
 Clayton College and State University, GA
 Clearwater Christian College, FL
 Cleary College, MI
 Cleveland State University, OH
 Cogswell Polytechnical College, CA
 Colby-Sawyer College, NH
 Colorado Technical University, CO
 Columbia College, SC
 Columbia College Chicago, IL
 Concordia University of Austin, TX
 Coppin State College, MD
 Curry College, MA
 Delaware State University, DE
 DeVry College of Technology, North Brunswick, NJ
 DeVry Institute of Technology, New York, NY
 DeVry University, Addison, Chi-Pape County, IL
 DeVry University, Alpharetta, GA
 DeVry University/Chicago, IL
 DeVry University-Columbus Springs, GA
 DeVry University/Columbus, OH
 DeVry University/Dallas, TX
 DeVry University/Denver, GA
 DeVry University/Fair Washington, PA
 DeVry University/Farmstead, CA
 DeVry University/Kansas City, MO
 DeVry University/Long Beach, CA
 DeVry University/Memphis, TN
 DeVry University/Orlando, FL
 DeVry University/Phoenix, AZ
 DeVry University/Pomona, CA
 DeVry University/Seattle, WA
 DeVry University/Valley Park, IL
 DeVry University/West Hills, CA
 DeVry University/Wheatridge, CO
 Dominican College, NY
 Dowling College, NY
 Eastern Nazarene College, MA
 Eastern New Mexico University, NM
 East-West University, IL
 Edinboro University of Pennsylvania, PA
 Edward Waters College, FL
 Elizabeth City State University, NC
 Elmhurst College, IL
 Fairmont State, WV
 Fayetteville State University, NC
 Fergus College, VA
 Fisk University, TN
 Florida Memorial College, FL
 Franklin Pierce College, NH
 Friends University, KS
 Georgia Court College, NJ
 Grand Canyon University, AZ
 Grand View College, IA
 Haver College, NH
 Hilbert College, NY
 Holy Family College, PA
 Huron College, MI
 Indiana State University, IN
 Indiana University East, IN
 Indiana University Kokomo, IN
 Indiana University Northwest, IN
 Indiana University South Bend, IN
 Indiana University Southeast, IN
 Indiana University-Purdue University Fort Wayne, IN
 Indiana University-Purdue University Indianapolis, IN
 International College, FL
 Jacksonville State University, AL
 Johnson and Wales University, RI
 Johnson State College, VT
 Judson College, IL
 Keystone College, PA
 Knoxville College, TN
 La Sierra University, CA
 Lake Superior State University, MI
 Lamar University, TX
 Langston University, OK
 Lees-McCann College, NC
 Le Moyne-Owen College, TN
 Lincoln Memorial University, TN
 Lindsey Wilson College, KY
 Livingstone College, NC
 Lock Haven University of Pennsylvania, PA
 Lourdes College, OH
 Lyndon State College, VT
 MacMurray College, IL
 Miami Hill College, NC
 Massachusetts College of Liberal Arts, MA
 Military University, VT
 Middle Tennessee State University, TN
 Minnab College, CA
 Metropolitan State College of Denver, CO
 Midwestern State University, TX
 Minnesota State University Moorhead, MN
 Minnesota State University, Moorhead, MN
 Minnesota State University, MN
 Mississippi University for Women, MS
 Morris College, NY
 Morris College, SC
 Mount Mary College, PA
 Mount St. Joseph College, MA
 Mount St. Mary's College, MD

Mount Olive College, NC
 National-Louis University, IL
 Neumann College, PA
 New England College, NH
 New Jersey City University, NJ
 New Mexico Highlands University, NM
 Newberry College, SC
 Nichols College, MA
 Norfolk State University, VA
 North Carolina Agricultural and Technical State University, NC
 North Carolina Central University, NC
 Northeastern State University, OK
 Northern State University, SD
 Northwood University, MI
 Northwood University, TX
 Norwich University, VT
 Notre Dame de Namur University, CA
 Oklahoma Wesleyan University, OK
 Ottawa University, KS
 Paine College, GA
 Paul Quinn College, TX
 Pine Manor College, MA
 Plymouth State University, NH
 Presentation College, SD
 Saint Augustine's College, NC
 Saint Bonaventure University, NY
 Saint Francis College, NY
 Saint Francis University, PA
 Saint Mary's College, MI
 Saint Peter's College, NJ
 Saint Thomas Aquinas College, NY
 Saint Thomas University, FL
 Savannah State University, GA
 Sheldon Jackson College, AK
 Shimer College, IL
 Siena Heights University, MI
 Silver Lake College of the Holy Family, WI
 Slippery Rock University of Pennsylvania, PA
 Soper-Douglass College, MD
 South Carolina State University, SC
 South College, GA
 Southeastern College, FL
 Southeastern Louisiana University, LA
 Southeastern University, DC
 Southern Christian University, AL
 Southern University and A&M College, LA
 Southern Vermont College, VT
 State University of New York/Maritime College, NY

Stillman College, AL
 Sul Ross State University, TX
 Talladega College, AL
 Tennessee State University, TN
 Texas A&M University at Kingsville, TX
 Texas Woman's University, TX
 Thomas College, ME
 Tiffin University, OH
 Trinity College, DC
 Tuskegee University, AL
 Unity College, ME
 University of Alaska Southeast, AK
 University of Bridgeport, CT
 University of Maine at Fort Kent, ME
 University of Maine at Machias, ME
 University of Maine at Presque Isle, ME
 University of New England, ME
 University of North Carolina at Pembroke, NC
 University of Pittsburgh at Johnstown, PA
 University of South Alabama, AL
 University of South Carolina at Aiken, SC
 University of Southern Colorado, CO
 University of Southern Indiana, IN
 University of Southern Mississippi, MS
 University of Texas at Arlington, TX
 University of Texas-Pan American, TX
 University of the District of Columbia, DC
 University of the Incarnate Word, TX
 University of Wisconsin/Milwaukee, WI
 University of Wisconsin/Oshkosh, WI
 University of Wisconsin/Parkside, WI
 University of Wisconsin/River Falls, WI
 Ursuline College, OH
 Valley City State University, ND
 Virginia Union University, VA
 Voorhees College, SC
 Warner Southern College, FL
 West Liberty State College, WV
 Western New Mexico University, NM
 Wilberforce University, OH
 Wiley College, TX
 William Carey College, MS
 William Penn University, IA
 Wilmington College, OH
 Winston-Salem State University, NC
 Woodbury College, VT
 Woodbury University, CA
 Wright State University, OH

NONCOMPETITIVE

The colleges in this category generally only require evidence of graduation from an accredited high school (although they may also require completion of a certain number of high school units). Some require that entrance examinations be taken for placement purposes only, or only by graduates of unaccredited high schools or only by out-of-state students. In some cases, insufficient capacity

may compel a college in this category to limit the number of students that are accepted; generally, however, if a college accepts 95% or more of its applicants, it automatically falls in this category. Colleges are also rated Noncompetitive if they admit all state residents, but have some requirements for nonresidents.

Allen University, SC
American International University, GA
Angelo State University, TX
Arkansas Baptist College, AR
Auburn University Montgomery, AL
Baker College of Flint, MI
Bellevue University, NE
Bryn Athyn College of the New Church, PA
Calvin College, MI
Cameron University, OK
Cascadia College, OR
Chadron State College, NE
City University, WA
City University of New York/College of Staten Island, NY
City University of New York/Medgar Evers College, NY
City University of New York/New York City College of Technology, NY
City University of New York/York College, NY
Clemson College, AL
Davenport University, MI
Jackson State University, MO
Eastern Oregon University, OR
East-Hardeman University, TN
Greenville State College, WV
Golden Gate University, CA
Grambling State University, LA
Heldref College, OR
Idaho College, WA
Holy Names College, CA
Hope International University, CA
Humphreys College, CA
Houston-Nelson College, TX
Jamestown College, ND
Jarvis Christian College, TX
Lendell College, IL
Kentucky State University, KY
Lee University, TN
Lincoln University, MO
Louisiana State University in Shreveport, LA
Marymount University, OR
Maryville State University, ND
Mercy College, NY
Miles College, AL
Mississippi Valley State University, MS
Missouri Western State College, MO
Montana State University-Northern, MT
Montana Tech of The University of Montana, MT
Mountain State University, WV
National American University, SD
New College of California, CA
New Mexico Institute of Mining and Technology, NM
Nicholls State University, LA
Northeastern Illinois University, IL
Northern Kentucky University, KY

Northwestern Oklahoma State University, OK
Northwestern State University of Louisiana, LA
Oakland City University, IN
Oglethorpe College, SD
Ohio State University at Lima, OH
Ohio State University at Mansfield, OH
Ohio State University at Marion, OH
Ohio State University at Newark, OH
Oklahoma Christian University, OK
Petrae College, PA
Pennsylvania College of Technology, PA
Peru State College, NE
Philoander Smith College, AR
Pikeville College, KY
Pittsburg State University, KS
Prairie View A&M University, TX
Purdue University/Calamet, IN
Saint Gregory's University, OK
Saint Paul's College, VA
Shenandoah State University, OR
Shenandoah University, VA
State Glendon University, SD
Southern Nazarene University, OK
Southern University at New Orleans, LA
Tabor College, KS
Texas Southern University, TX
Thomas University, GA
Tougaloo College, MS
Troy State University Montgomery, AL
University of Akron, OH
University of Alaska Anchorage, AK
University of Arkansas at Little Rock, AR
University of Arkansas at Monticello, AR
University of Findlay, OH
University of Houston-Downtown, TX
University of Louisiana at Monroe, LA
University of Minnesota-Crookston, MN
University of Montana-Western, MT
University of Nebraska at Kearney, NE
University of North Alabama, AL
University of Rio Grande, OH
University of Texas at El Paso, TX
University of Texas at San Antonio, TX
University of Toledo, OH
Walla Walla College, WA
Washburn University of Topeka, KS
Wayland Baptist University, TX
Wayne State College, NE
Weber State University, UT
West Virginia State College, WV
West Virginia University Institute of Technology, WV
Western Tyndale College, MI
Williamson College, DE
Winthrop State University, CH

SPECIAL

Listed here are colleges whose programs of study are specialized; professional schools of art, music, nursing, and other disciplines. In general, the admissions requirements are not based primarily on academic criteria, but on evidence of talent or special interest in the field. Many other colleges and universities offer special-interest pro-

grams in addition to regular academic curricula, but such institutions have been given a regular competitive rating based on academic criteria. Schools oriented toward working adults have also been assigned the rating.

- Albany College of Pharmacy, NY
 Allen College, IA
 Art Academy of Cincinnati, OH
 Art Center College of Design, CA
 Art Institute of Atlanta, GA
 Art Institute of Boston at Lesley University, MA
 Art Institute of Portland, OR
 Art Institute of Southern California, CA
 Atlanta College of Art, GA
 Baltimore Hebrew University, MD
 Benjamin Franklin Institute of Technology, MA
 Berklee College of Music, MA
 Boston Architectural Center, MA
 Boston Conservatory, MA
 Burlington College, VT
 Cabarrus College of Health Sciences, NC
 California College of the Arts, CA
 California Institute of the Arts, CA
 Cambridge College, MA
 Charter Oak State College, CT
 Cincinnati College of Mortuary Science, OH
 Cleveland Institute of Art, OH
 Cleveland Institute of Music, OH
 College for Creative Studies, MI
 College for Lifelong Learning, NH
 College of Aeronautics, NY
 College of New Rochelle School of New Resources, NY
 College of Visual Arts, MN
 Columbus College of Art and Design, OH
 Corcoran School of Art and Design, DC
 Cornish College of the Arts, WA
 Curtis Institute of Music, PA
 Deaconess College of Nursing, MO
 Eastman School of Music, NY
 Excelsior College, NY
 Five Towns College, NY
 Florida Hospital College of Health Sciences, FL
 Franklin University, OH
 Gallaudet University, DC
 Harris-Stowe State College, MO
 Henry Cogswell College, WA
 Jewish Hospital College of Nursing and Allied Health, MO
 Juilliard School, NY
 Kansas City Art Institute, MO
 Kendall College of Art and Design of Ferris State University, MI
 Laboratory Institute of Merchandising, NY
 Lester L. Cox College of Nursing and Health Sciences, MO
 Maine College of Art, ME
 Manhattan School of Music, NY
 Mannes College of Music, NY
 Martin University, IN
 Maryland Institute College of Art, MD
 Massachusetts College of Art, MA
 Massachusetts College of Pharmacy and Health Sciences, MA
 MCP Hahnemann University, PA
 Memphis College of Art, TN
 Mercy College of Health Sciences, IA
 Metropolitan State University, MN
 Milwaukee Institute of Art and Design, WI
 Minneapolis College of Art and Design, MN
 Montserrat College of Art, MA
 Moore College of Art and Design, PA
 NAES College, IL
 Naropa University, CO
 National University, CA
 Nebraska Methodist College of Nursing and Allied Health, NE
 New England Conservatory of Music, MA
 North Carolina School of the Arts, NC
 Otis College of Art and Design, CA
 Pacific Northwest College of Art, OR
 Parsons School of Design, NY
 Pratt Institute, NY
 Research College of Nursing, MO
 Rhode Island School of Design, RI
 Ringling School of Art and Design, FL
 Samuel Merritt College, CA
 San Francisco Art Institute, CA
 San Francisco Conservatory of Music, CA
 Savannah College of Art and Design, GA
 School of the Art Institute of Chicago, IL
 School of Visual Arts, NY
 State University of New York/Empire State College, NY
 Strayer University, DC
 Thomas Edison State College, NJ
 Trinity College of Nursing and Health Sciences, IL
 Union Institute and University, OH
 University of Maryland/University College, MD
 University of the Arts, PA
 VanderCook College of Music, IL
 West Suburban College of Nursing, IL
 Westminster Choir College of Rider University, NJ