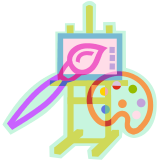


The Writing Lab



***Our Piece of Mind* Cover Contest—March 1—29!**

Interested students are asked to design both a front and a back cover for this year's literary magazine. Entries will be accepted during March. Literary magazine staff members (artists, typists, and selection staff) and JMS teachers will have the opportunity to vote for their favorite cover entry. *Our Piece of Mind* will be published at the beginning of June. Students with questions should see Mrs. Kelly in the Writing Lab, Room 102.

- ✓ Students MUST design both a front and a back cover for the magazine.
- ✓ Entries MUST be done neatly in a medium or fine black marker. All stray pencil marks and smudges MUST be erased before handing in the cover design.
- ✓ A one-inch margin MUST be on the left side of the design. A half-inch margin MUST be on the top, bottom, and right side.
- ✓ Entries MUST be designed on plain, white, 8 1/2" x 11" paper (no lines or holes).
- ✓ Entries MUST include the following (no particular order required):
 - Our Piece of Mind, Literary Magazine
 - Thomas Jefferson Middle School
 - 2018-2019
- ✓ The illustrator's name and homeroom teacher must be written on the back.
- ✓ The entry MUST be neat, not wrinkled or torn.
- ✓ The entry MUST be an original student illustration (NOT computer-generated).
- ✓ All entries MUST be given to Mrs. Kelly in the Writing Lab.
- ✓ Entries will be accepted from March 1--March 29.



Volunteer Program

Thank you to our dedicated volunteers who graciously give their time to our students. We will be very BUSY throughout the month of March and early April. Please sign up to conference with our students. During March, your help will be needed with our seventh graders as we tackle argumentative essays and our sixth graders as we craft informational essays. An hour or two of your time is greatly appreciated and truly does make a difference in the life of a child. Please consider coming in; you will be amazed by what our young writers create!

A schedule of dates and times when volunteers are needed will be sent to you via e-mail. Email Mrs. Melissa Kelly, the JMS Writing Clinician, (mkelly@mtlsd.net) if you have any questions in regard to this volunteer opportunity.



***Our Piece of Mind*, Jefferson's Literary Magazine**

All students are encouraged to be a part of *Our Piece of Mind*.

- ✓ Students can submit their original writing to be considered for publication, illustrate accepted pieces, type/edit accepted selections, or be a part of the selection staff. Poems, essays, stories, articles, etc. are welcome. Submission forms for writing are available in the Writing Lab or from the English and literature teachers.
- ✓ The selection staff meets weekly on Tuesdays to read, discuss, and determine which pieces to accept for publication.
- ✓ Several pieces are waiting to be typed and illustrated. Interested student typists and artists should stop by the Writing Lab, Room 102 to help.
- ✓ Students interested in helping with the literary magazine should see Mrs. Kelly.

We will continue to accept pieces through the end of the year, so please, keep encouraging your students to submit their writing, to join the Tuesday selection staff, or to type and illustrate for us!



Enrichment

A bulletin board advertising all current writing enrichment opportunities can be found in the Writing Lab, Room 102. Mrs. Kelly will conference with any student concerning his enrichment entries. In addition, she will take care of submitting the student's writing. All young writers are encouraged to take a risk and to explore writing enrichment.

Enrichment

A bulletin board advertising all current writing enrichment opportunities can be found in the Writing Lab. Mrs. Kelly will conference with any student concerning his/her enrichment entries. All young writers are encouraged to take a risk and to explore writing enrichment.

- **Breaking Barriers Essay Contest**—factual, personal essay about a barrier you have faced and how you have used one of Jackie Robinson's Nine Values to face it (citizenship, commitment, courage, determination, excellence, integrity, justice, persistence, teamwork)--grade 6 (200-750 words), grades 7 & 8 (500 to 1400 words)--deadline March 14--information available at [Breaking Barriers Essay Contest](#)
- **SCOPE's February edition contest entries**—respond to various articles and prompts throughout the magazine—deadline March 15--information available in Writing Lab
- **Young Playwrights Contest**—open to students in grades 7 & 8--collaborations by up to two playwrights accepted--original, one-act plays--no screenplays, musicals, or adaptations--must follow prescribed format—deadline March 31--information available at [Young Playwrights Contest](#)
- **Our Piece of Mind JMS Literary Magazine Cover Contest**--students must design both a front and back cover and follow the specific requirements and guidelines--deadline March 29--information available in the Writing Lab and at [Cover Contest 2019](#)
- **Creative Communication's Poetry Contest**—21-line maximum, single-spaced, can have blank line between stanzas—deadline April 4--information available at [Creative Communication](#)
- **SCOPE's March edition contest entries**—respond to various articles and prompts throughout the magazine—deadline April 15--information available in Writing Lab
- **The America Library of Poetry**—20-line maximum, any style except concrete or blackout—deadline April 30--information available at [The America Library of Poetry](#)
- **World Historian Student Essay Competition**--essay addressing the issue "In what way has the study of world history affected my understanding of the world in which I live?"--approximately 1000 words--deadline May 1--information available at [World Historian Student Essay Competition](#)
- **2019 Bow Seat Ocean Awareness Contest**—categories include art, poetry, film, video, prose, & music—deadline June 17—information available at [2019 Ocean Awareness Contest](#)
- **Large Print--Pittsburgh-based literary journal created for teens, by teens**--fiction/non-fiction 4,000 words or less--poetry 2 typed pages or less, information available at [Large Print](#)
- **Stone Soup**—publishes writing and art by young people through age 13, information available at [Stone Soup](#)