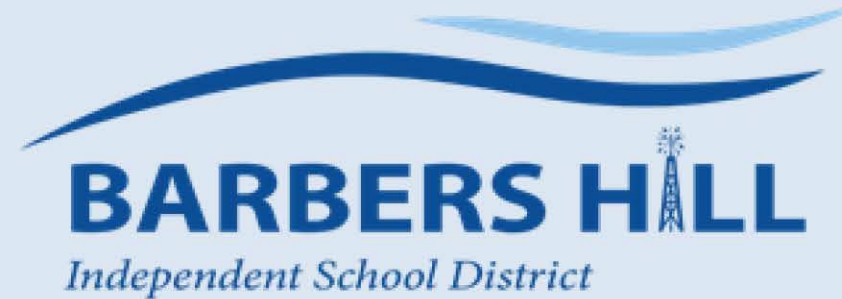




Board Meeting: April 15, 2019



Bond 2017 Update

Early Childhood Center

Construction in Progress

Substantial Completion July 2019

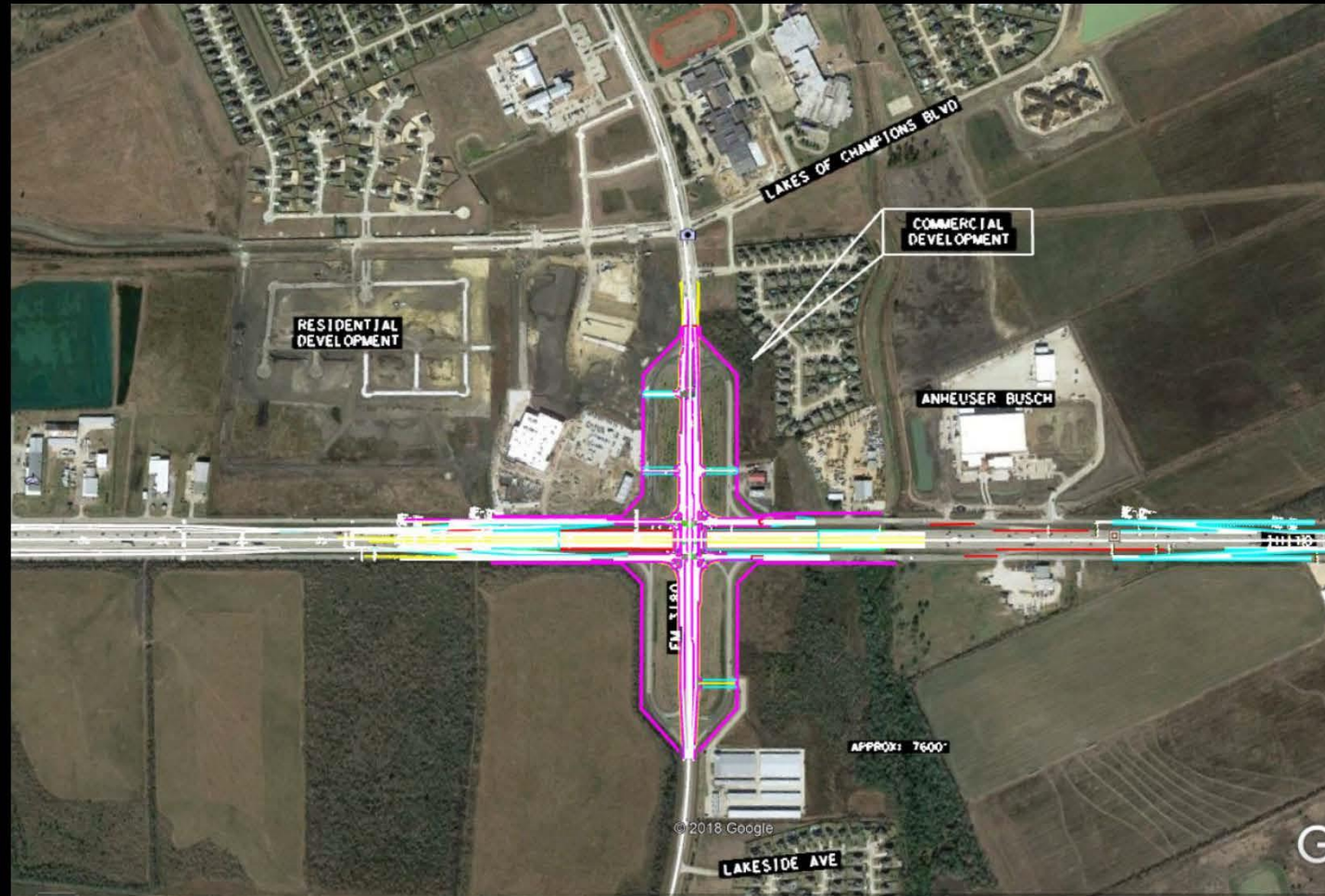
Proposed Summer Projects

**HS Weight Rm. Expansion – MSS Exterior
Canopy Corridor – ESS Marquee – MSS Front
LED Signage - MSN Art Room Renovations**

Action Items

**GMP for Weight Room
Addition & Equipment
GMP for Summer Projects Package**

Update – TXDOT I-10 FM 3180 BRIDGE INTERCHANGE PROJECT



Construction scheduled to begin by the end of April 2019



Update – TXDOT I-10 FM 3180 BRIDGE INTERCHANGE PROJECT



TCP Overview Eagle Drive Intersection: IH 10 at FM 3180

2019										2020												2021									
APR	MAY	JUN	JUL	AUG	SEP	OCT	NOV	DEC	JAN	FEB	MAR	APR	MAY	JUN	JUL	AUG	SEP	OCT	NOV	DEC	JAN	FEB	MAR	APR	MAY	JUN	JUL	AUG	SEP	OCT	
PHASE 1										PHASE 2					PHASES 3 & 4			PHASES 5 & 6				PHASE 7					PHASE 8				

PHASE 1

- Build new entrance and exit ramps to accommodate main lane traffic in future phases
- Reconstruct and widen the frontage roads again to accommodate future phases
 - Frontage roads will be reconstructed one-half at a time
 - Inside first then the outside
- New u-turn constructed at FM 565 under freeway bridge
- Traffic on FM 3180 will be unchanged

PHASE 2

- Main lane traffic will be placed on the frontage roads.
 - There will be a barrier between main lane traffic and frontage road traffic.
- Traffic will not be able to move from the main lanes to the frontage roads.
 - It will be the same as having no entrance or exit ramps for FM 3180.
- Traffic will have to use Grand Parkway entrance and exit ramps.
- During this phase, all of the new main lane bridge will be constructed except for the last segment at the existing bridge.
- There will be some temporary roadways built under the new bridge connecting the jug handle roads on the north side to the jug handle roads on the south side for use after the new bridge is completed.
- This will be completed prior to June 2020.
- Traffic on FM 3180 will be unchanged.

PHASES 3 & 4

- FM 3180 closure is tentatively scheduled for **May 27 through August 6** and coordinated with school calendar.
- Traffic will be placed on the jug handle roadways.
- Traffic will have to travel to Grand Parkway and FM 565 and make the u-turn to get to the other side.
- IH 10 main lane traffic will remain on frontage roads and the barrier will remain in place.
- The existing FM 3180 bridge structure over IH 10 freeway will be removed.
- The final span of the new IH 10 bridge will be constructed.
- Traffic is then placed on the new IH 10 bridge.
- All frontage road traffic will travel around the jug handles.
- Temporary roadways will be constructed to allow north to south traffic under the new bridge.

PHASES 5 & 6

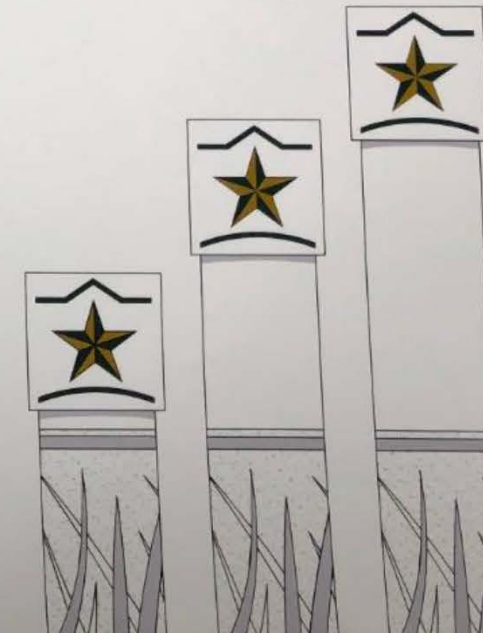
- FM 3180 traffic will drive on the jug handle roadways.
 - Each jug handle will be one-way traffic
- FM 3180 bridge and embankments will be removed and the new FM 3180 roadway will be constructed.

PHASE 7

- FM 3180 traffic will be placed on the new roadway.
- Portions of frontage roads, which were constructed of temporary pavement in previous phases, will be removed and replaced with permanent pavement.

PHASE 8

- The last pieces of pavement will be constructed (due to phasing) and the jug handle roadways will be removed.
- Beautification amenities will be installed under the bridge and in the intersection.



Project Time Line – 8 Phases



Update – TXDOT I-10 FM 3180 BRIDGE INTERCHANGE PROJECT

PHASES 3 & 4

- FM 3180 closure is tentatively scheduled for May 27 through August 6 and coordinated with school calendar.
- Traffic will be placed on the jug handle roadways.
- Traffic will have to travel to Grand Parkway and FM 565 and make the u-turn to get to the other side.
- IH 10 main lane traffic will remain on frontage roads and the barrier will remain in place.
- The existing FM 3180 bridge structure over IH 10 freeway will be removed.
- The final span of the new IH 10 bridge will be constructed.
- Traffic is then placed on the new IH 10 bridge.
- All frontage road traffic will travel around the jug handles.
- Temporary roadways will be constructed to allow north to south traffic under the new bridge.

Project Time Line – Bridge Closure Phases:
May 27, 2020 to August 6, 2020

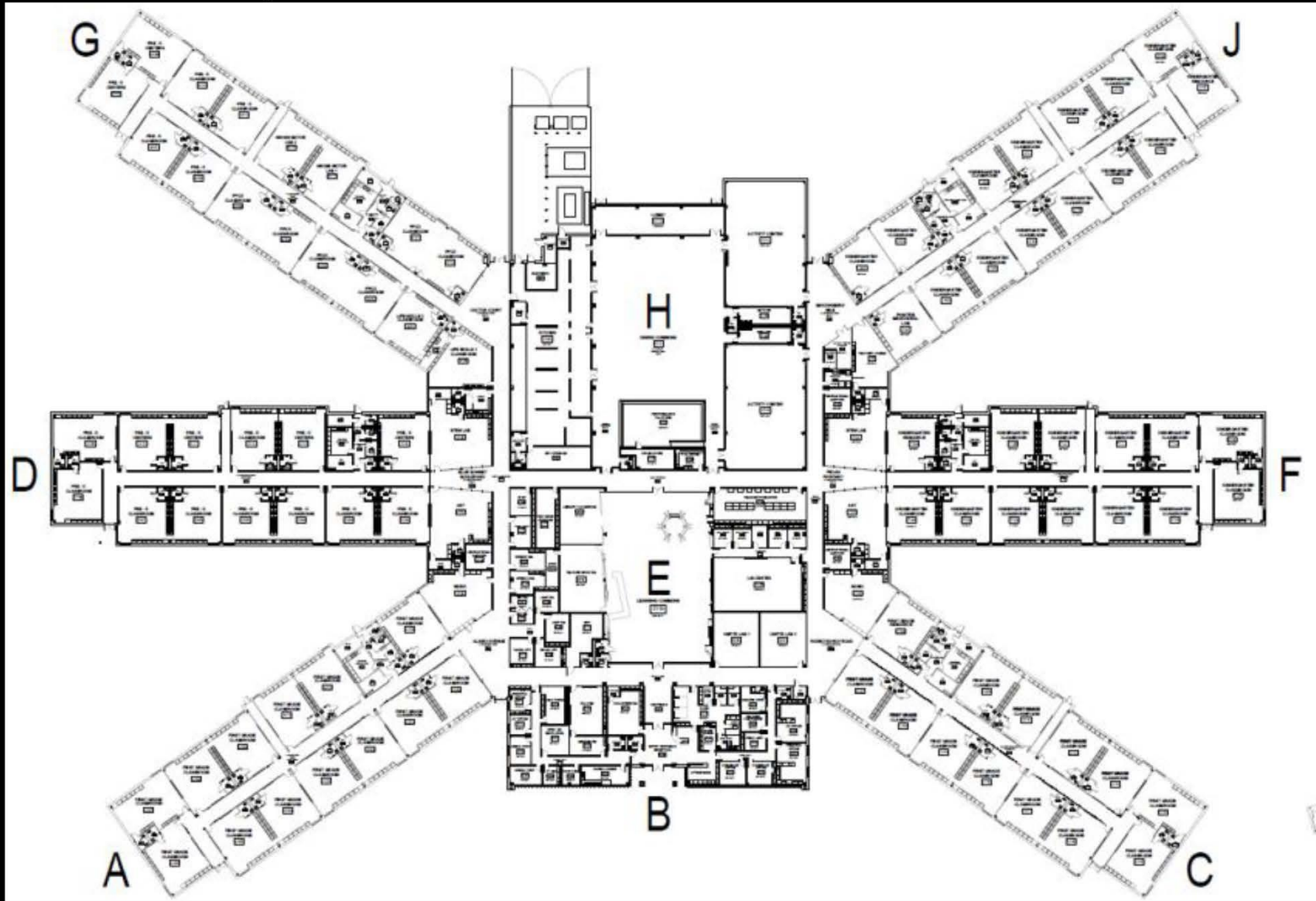
Bond 2017 - Early Childhood Center



Early Childhood Center Front Entry Rendering



Bond 2017 - Early Childhood Center



Bond 2017 - Early Childhood Center



Aerial East View from Lakes of Champion



Bond 2017 - Early Childhood Center



Aerial East View of Bus Loop, Visitor Parking, Front Entrance



Bond 2017 - Early Childhood Center



Aerial East View Front Entrance



Bond 2017 - Early Childhood Center



Front Entrance, Administration, Library, Roof & Building Envelope



Bond 2017 - Early Childhood Center



Building Envelope, Roofing, Insulation, Lightweight Concrete



Bond 2017 - Early Childhood Center



Roof Deck , Insulation, Prep for Lightweight Concrete - Start Building
Envelope Framing & Sheathing



Bond 2017 - Early Childhood Center



Roof Deck , Insulation, Prep for Lightweight Concrete - Start Building
Envelope Framing & Sheathing



Bond 2017 - Early Childhood Center



Roof Deck , Insulation, Prep for Lightweight Concrete



Bond 2017 - Early Childhood Center



Roof Deck , Insulation, Prep for Lightweight Concrete



Bond 2017 - Early Childhood Center



Lightweight Concrete, Roof Cap Sheet, Masonry Brick



Bond 2017 - Early Childhood Center



Lightweight Concrete, Roof Cap Sheet, Masonry Brick



Bond 2017 - Early Childhood Center



Lightweight Concrete, Roof Cap Sheet, Masonry Brick



Bond 2017 - Early Childhood Center



Lightweight Concrete, Roof Cap Sheet, Masonry Brick



Bond 2017 - Early Childhood Center



Roof Cap Sheet, Masonry Brick



Bond 2017 - Early Childhood Center



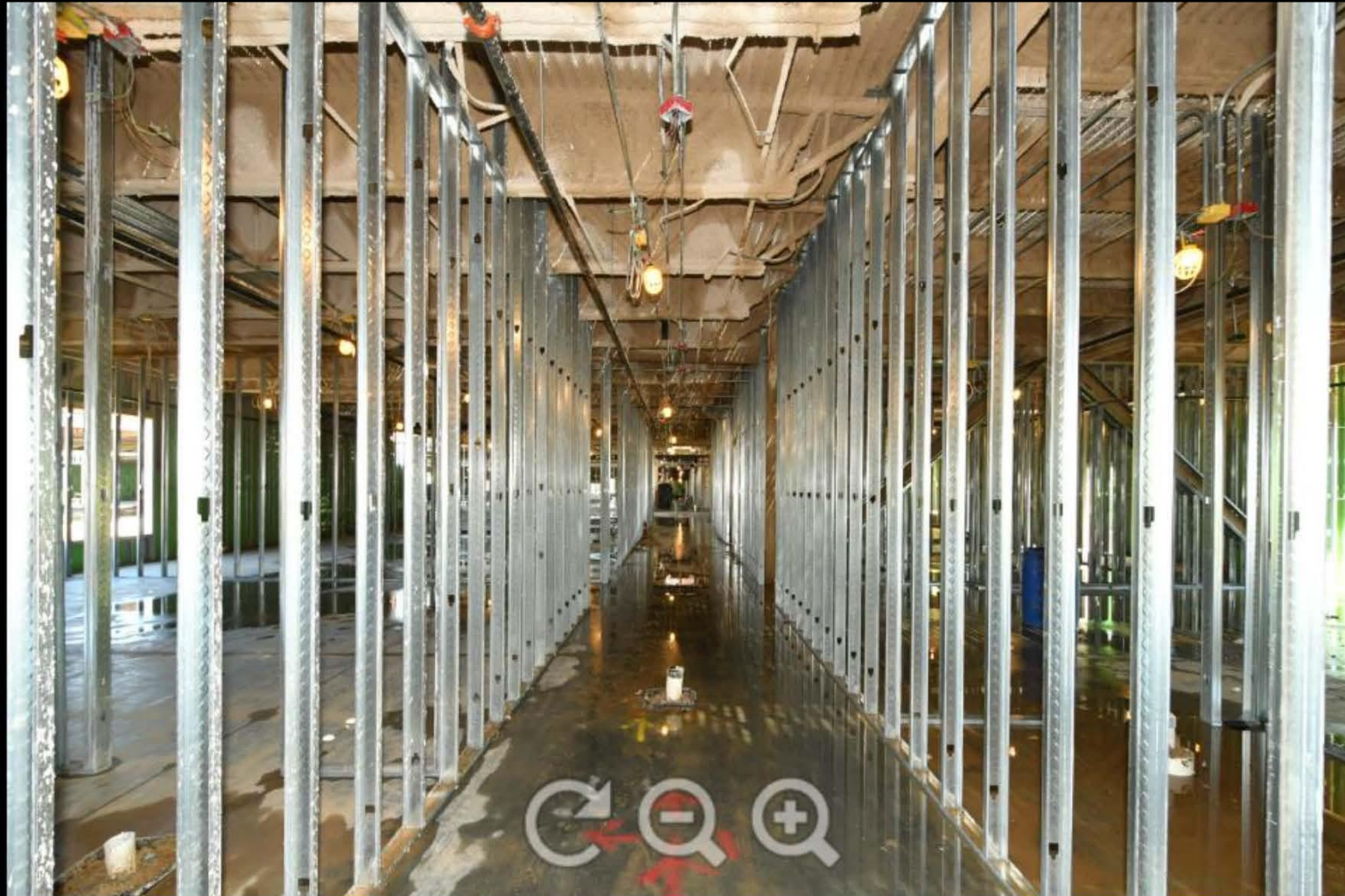
Lightweight Concrete, Roof Cap Sheet, Masonry Brick



Bond 2017 - Early Childhood Center



Bond 2017 - Early Childhood Center



Bond 2017 - Early Childhood Center



Lightweight Concrete, Roof Cap Sheet, Masonry Brick



Bond 2017 - Early Childhood Center



Lightweight Concrete, Roof Cap Sheet, Masonry Brick



Bond 2017 - Early Childhood Center

MILESTONE SCHEDULE STATUS REPORT EARLY CHILDHOOD CENTER BARBERS HILL INDEPENDENT SCHOOL DISTRICT

April 3, 2019



MILESTONE	TARGET	STATUS	(+/-)
Foundation Slabs		Complete	
Steel Erection		Complete	
Lightweight Roof Deck	April 18, 2019	On Target	ØD
Building Dry-in	May 15, 2019	On Target	ØD
Permanent Power	May 1, 2019	On Target	ØD
Start Finishes (C.Tile)	May 1, 2019	On Target	ØD
Mechanical Start-up	May 3, 2019	On Target	ØD
Exterior Brick	May 20, 2019	On Target	ØD
Roofing System	July 1, 2019	On Target	ØD
Finishes Complete	July 3, 2019	On Target	ØD
Certificate of Occupancy	July 15, 2019	On Target	ØD

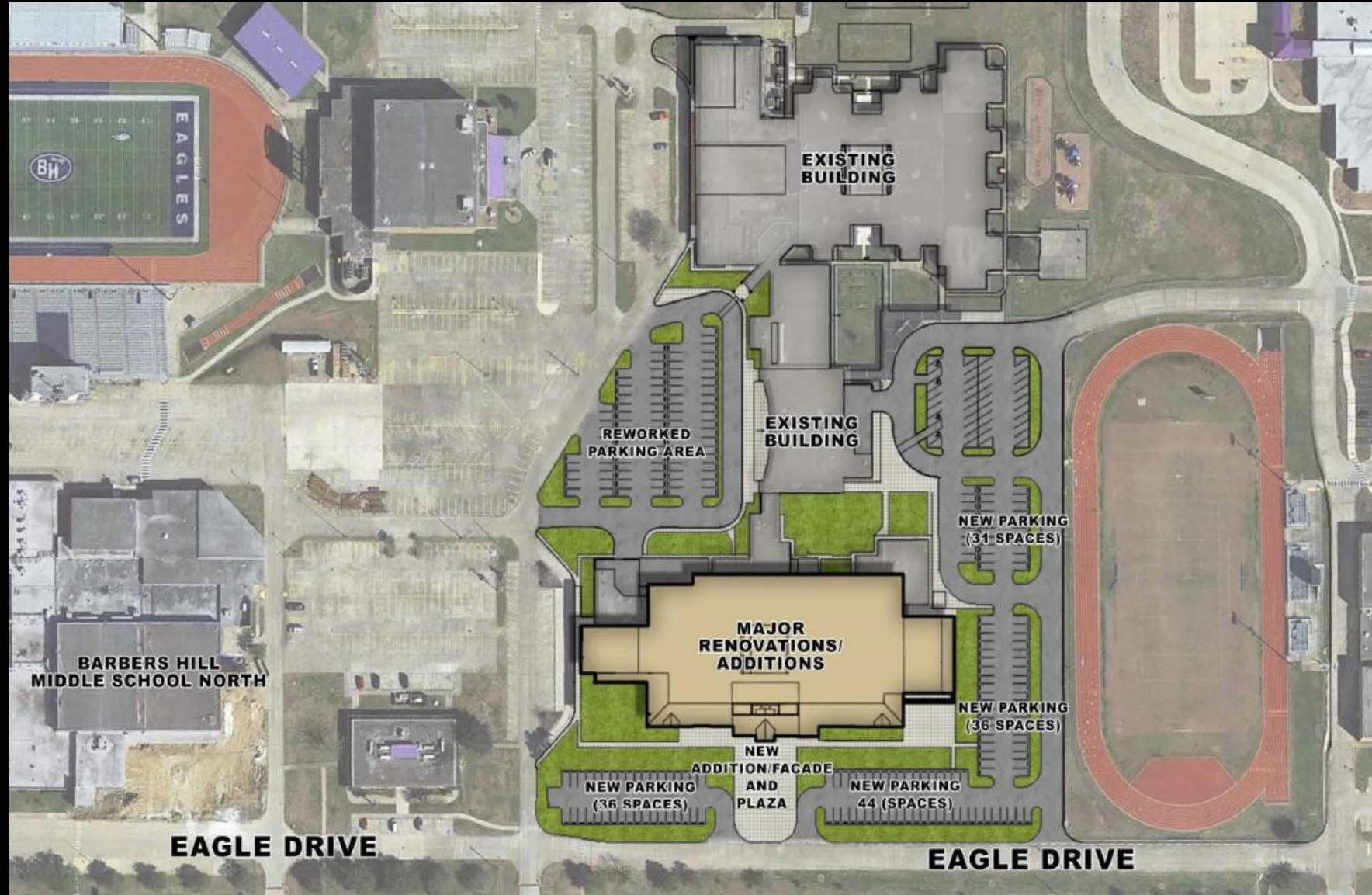
Bond 2017 – Central Building Administration PDC Facility – PBK Update



Proposed Administration/Hall of Honor Main Entrance Elevation



Proposed Bond 2017 Projects - Currently in Design Phase for Future Approval



A photograph of a construction site. In the foreground, there's a concrete wall on the left and a metal frame structure on the right. In the background, a large red building is under construction, with a crane visible in the distance under a clear blue sky. The text "Thank You" is overlaid in the center in a large, blue, sans-serif font.

Thank You