

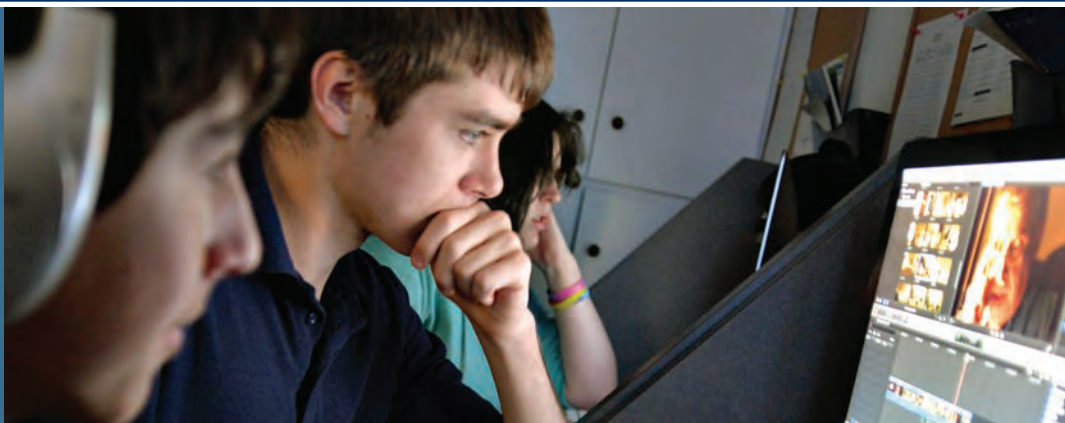
The Horizon

December 2014



A **Newsletter** for Alumni, **Families** & **Friends** of Shelton School

2013-2014 Annual Report
(See Page 25)



The Horizon **Table of Contents**

December 2014

1	From the Executive Director
2	Development Doings
4	Outreach/Training Offerings
5	Shelton Outreach is Everywhere
6	Shelton Speech / Language / Hearing Clinic
7	Shelton Evaluation Center
8	Accolades
9	Lower School News
10	Upper Elementary School News
11	Middle School News
12	Upper School News
14	Fine Arts Features
16	From the Head of School
18	Alumni Updates
19	Off the Shelf Library News
20	Spotlight on Sports
21	Parents' Page
22	Community Connections Beyond the Campus
24	Staff Stuf
25	Annual Report of Gifts 2013-2014

MISSION STATEMENT

Shelton on a mission
a school and resource center dedicated to
— making a difference —
by serving and empowering the lives of
— students who learn differently —
Because Not All Great Minds Think Alike

VISION STATEMENT

— a world model of education —
for
— individuals who learn differently —
through
Education — Evaluation — Therapy
Research — and — Outreach

The Horizon is published by the Public Relations Department.
This issue includes Shelton's 2013-2014 Annual Report.

Suzanne Stell, M.Ed., CALT, Executive Director

Anne Hendrick-Thomas, APR, SPHR, Director of Public Relations

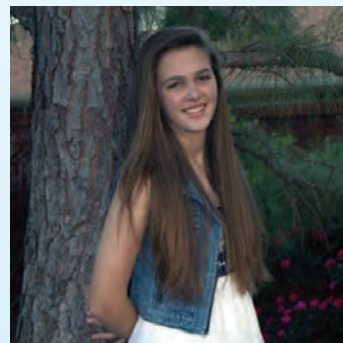
Theresa Bruno, CRFE, Director of Development



972.774.1772 www.shelton.org

Remembering Kierstin Eaddy

May 20, 2000 – July 26, 2014



This edition of *The Horizon* is dedicated to the memory of Kierstin Eaddy, who died in a go-kart accident July 26. Kierstin entered Shelton School in seventh grade in 2012 and successfully completed eighth grade with honors in the spring of 2014. Kierstin was outstanding, soaring both in academics and athletics. While maintaining an A average, Kierstin broke numerous track records. This year she had participated in the Junior Olympics national qualifier event. Kierstin also set an example of service through her involvement in Girl Scouts and volunteer work with SpiritHorse, a not-for-profit organization where she donated many hours to help autistic children build skills and confidence.

Kierstin won praise from both teachers and peers and unanimously won the *Spirit of Shelton Award* this year. The votes included such student comments as: "I have never seen such a positive person," and "She is an awesome friend, honest and good." At the final awards ceremony for eighth grade, Kierstin was recognized for her special qualities of integrity and compassion.

The Shelton community, along with many others, celebrated her life on November 8 at Texas Motor Speedway in a special event that Kierstin would have enjoyed. Families came for a movie night and to drive laps. Partial proceeds of the event went to the Kierstin Eaddy Endowed Scholarship Fund at Shelton.

Kierstin will always bring to mind a beautiful, giving spirit, full of fun and talent. She was an exceptional young person who achieved much in 14 years. Her legacy will always include the exceptional standards by which she lived.



Shelton students attend memorial event at Texas Motor Speedway

From the Executive Director

Suzanne Stell, M.Ed., CALT

Shelton Focused on 2025: Exciting, Engaging, Energizing

Shelton is in the midst of developing a ten-year plan. It has two parts – business and marketing. The business plan will set the course for where we want to be in 2025, followed by a marketing plan to support it. The process underway is exciting, engaging and energizing, and I eagerly anticipate our next steps.

Starting in January 2014, committees comprising board members, parents, faculty, staff and administrators have formed to examine Shelton's four business entities:

- School
- Speech / Language / Hearing Clinic
- Evaluation Center
- Outreach / Training Center

Each committee met for several months and created its respective "state of the union" summary, based on a review of mission, vision, and the business ramifications tied to all products and services. These summaries were presented to our board in November, and they form the preliminary body of knowledge related to our next actions.

In the Spring of 2015 we will continue to define our business goals, refine our forecast, and begin the fun part of making Shelton's voice rise above the rest with new messages. All involved are enthusiastic, creative and supportive of the work remaining.

Collaborations Continue

We continue to join forces with other organizations as we share expertise, information and resources. In October Shelton again partnered with 16 other private schools through the *Common Ground* speaker series. Dr. Madeline Levine was the featured speaker. We linked with seven other schools to sponsor Lenore Skenazy's presentation, *How Did We Get So Afraid for Our Kids?* And we have had a major grass roots involvement with Commit! (see pg. 23, *Community Connections*). I feel we are all enriched through these endeavors.



Shelton Opens Its Doors

Each year we have many requests for internship placement at Shelton. This spring we'll have interns in our Speech Clinic, School Speech Program, and Upper Elementary division. We enjoy the interaction with those from major educational institutions and value the fresh young faces of those joining with us – it keeps us young as well, and we all learn from one another.

Forward at 40

The timing and synergy of all these activities above could not be better, as we are poised to celebrate Shelton's 40th anniversary next year. As we formulate our plans, I am grateful for the ideas and contributions of so many. Stay tuned, and feel free to share your thoughts with me.

40th
ANNIVERSARY

Suzanne Stell

Development Doings

Theresa Bruno, CRFE, Director of Development



Development Department staff
(Seated L to R) Betty Glasheen, Theresa Bruno
(Standing L to R) Janie Robertson, Leslie Robinson

Supporting Shelton

Everyday we reflect upon how fortunate our community is that Shelton remains true to its mission of providing a quality education to students who learn differently. We are grateful to be part of a school that has an incredible history and a generous community of parents, grandparents, faculty, staff, friends and alumni. Our community continues to inspire us and we are united by a vision to build upon our successes.

The saying "It takes a village to raise a child" is a testimonial to our unique partnerships with our students, families and community. Shelton is grateful for our well-trained faculty and staff, dedicated volunteers, committed families, and our generous donors for their support.

Each year, in our Annual Report, we recognize and acknowledge the gifts of our supporters and celebrate the generosity and giving spirit seen throughout the year. It is with deep gratitude that we thank our entire community for its support of Shelton and its mission. We rely on your partnership to realize our goals and thank you for your ongoing financial support. Together we can.... make a difference!

Assuring the Future — Shelton Endowment Campaign

Shelton is currently conducting Phase II of a \$10,000,000 Endowment Campaign. Growth of the Shelton School Endowment Fund is one of the school's highest priorities.

In 2016 Shelton will celebrate its 40th anniversary. This milestone year will be the perfect time to celebrate our accomplishments. It is also a time to set ambitious goals that honor these accomplishments and to open doors to all of the extraordinary possibilities the future can bring.

With a larger endowment, Shelton will have additional financial resources to:

- Attract and retain the best teachers for our students
- Provide financial aid to needy students
- Offer enhanced programs and improved facilities for our students
- Continue our community outreach programs and research

An investment in Shelton's Endowment Fund will help guarantee that Shelton is here not only for those who need us today, but more importantly, for future generations to come. Your contribution to Shelton's Endowment Fund is a true endorsement of our mission and an ever-lasting form of financial support.

The Development Office would be delighted to meet with you to answer any questions or discuss endowment opportunities. Please call Theresa Bruno at Ext. 2230 or email tbruno@shelton.org for further information.



(L to R) Shelton's Suzanne Stell and George Teague receive AEDs from Tiffanie Huffmaster

Living for Zack

Shelton received two automated external defibrillator (AED) packages from an anonymous donor that were presented to the school at the 2014 Homecoming Pep Rally by the organization Living For Zachary. Thank you for helping raise awareness of keeping our students heart-healthy.

2014-2015 Shelton Annual Fund Drive — Together We Can....Make A Difference



(L to R) Co-Chairs Charlie and Mitzie Wheeler, Stephanie and Bryan Rigg lead the drive

Goal: \$650,000 and 100% parent participation

A gift to the Annual Fund Drive is the first and most important way you can support Shelton. Your donation provides necessary funding for operational and educational enhancements that tuition alone does not cover. Annual Fund gifts help bridge the gap between tuition revenue and the full cost of providing a unique quality education for each student. Every gift we receive makes a difference in the lives of our students. It takes all the members of our community to make the Annual Fund Drive successful, and together we can meet our goals and make a difference.

Thank you to our 2013-2014 Annual Fund Drive Co-Chairs **Laura** and **G. Ellison Hurt** and **Lucy** and **Don Witte** for their leadership and support. We would like to express our deep appreciation to all those who supported the 2013-14 Annual Fund Drive. We are delighted to report that we raised \$617,346.



(L to R) Ellison and Laura Hurt; Lucy and Don Witte

Shelton Stampede Auction — Bringing It Back Home February 21, 2015

Co-Chairs: **Karen Higgins, Mickie Bragalone** and **Courtney Dios**

SAVE THE DATE for this year's exciting event. Planning is well under way for the annual Shelton Parents' Association Stampede Auction. This year, the event will be held on Shelton's campus. The evening will feature live and silent auctions, dinner, and live entertainment provided by the Icehouse band. We have plenty of volunteer opportunities available. Please contact the Parents' Association Office for details.



Special Thanks to our Shelton Community

It is with deep gratitude that we thank our entire community for their support of Shelton. Special thanks to our board members, loyal supporters and dedicated volunteers who helped the Development Office in so many ways. We wish to acknowledge our leadership this past year: Annual Fund Co-Chairs: **Laura** and **G. Ellison Hurt** and **Lucy** and **Don Witte**; Auction Co-Chairs: **Heather Cronister** and **Rachel Dreiling**; SPA Co-Presidents: **Christine Horstman** and **Annette Matteson**; and Shelton's Endowment Fund Committee: **Ed Heffernan, Gary Webb, Susan Griffiths, Kristy Robinson, Dee Velvin** and **Philip Verges**.

Outreach / Training Offerings

Nancy Coffman, M.S., LDT, CALT, QI, Director of Outreach / Training



Feedback from Trainees

"I have such a high regard of the **professionalism** and **useful knowledge** of the instructor. More than I have seen in my six years of college education."

"Appreciate the **passion** of the instructor for students who have given up on themselves and now have some **hope!**"

"Absolutely exceed expectations! MSLE has been the only program that I've been a part of that has **made a difference in reading skills** for dyslexic students."

"The knowledge of the instructor and the advisors is **unparalleled** to any other group of professionals I've ever worked with, including college professors."

Making an Impact in Public Schools

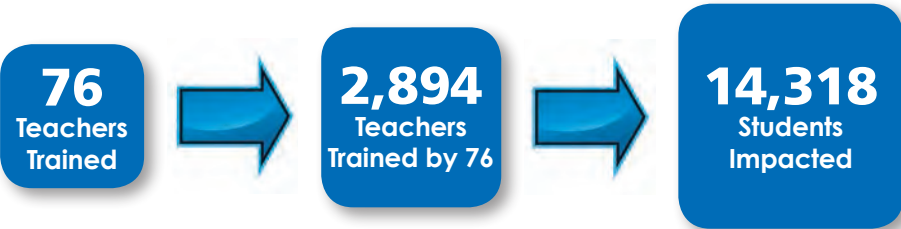
In the summer of 2009, Shelton Outreach entered into a contract with the two school districts in Alabama to train teachers for certification at the therapy level in Multisensory Structured Language Education (MSLE) using the Shelton Academic Reading Approach based on the curriculum from Texas Scottish Rite Hospital, *Take Flight: A Comprehensive Intervention for Students with Dyslexia*. Over the past five years, this training has been offered to teachers across the state. As of July 2014, public school districts have funded training for 185 teachers representing 39 different school districts in Alabama.

To assess the impact of these teachers on their school communities, the first three Alabama cohorts were asked to complete a survey at the end of their second year. Teachers were asked how many students received the intensive intervention from them and how many students had received short-term support from them. They were also asked if they had delivered in-service instruction to their colleagues and if they had implemented any programs on their campuses. Finally information was collected to determine how many students had received support based on those in-service trainings and programs.

First, let us consider the impact of the training on the colleagues of those trained.
Trained teachers responding to the survey. 76
Teachers receiving in-service training from those teachers. 2,894

The results on student impact were astonishing! The 76 therapist candidates from three cohorts reported the following during a two-year period:
Students receiving intensive intervention 814
Students receiving short term support. 2,936
Students receiving support resulting from in-services provided. 10,568

Total students receiving support impacted by MSLE training 14,318



These numbers represent the work of 76 teachers. That investment would appear to be a solid one! Within 24 months of beginning their training, on average, each of the teachers had impacted the professional knowledge of 38 fellow teachers and impacted the learning of 188.4 children. The number that we will never know is the number of students who never know failure because their teachers are more informed and more knowledgeable.

In summary, intensive MSLE teacher training for a few teachers impacted the colleagues of those teachers as well as the students they served. Public school teachers are the front line of defense against illiteracy by providing quality literacy services to children across the country. The standards held by International Multisensory Language Education Council (IMSLEC) and by the International Dyslexia Association (IDA) ensure that teachers enrolled in IMSLEC courses have the tools needed to provide that quality instruction and prevent student failure.

Shelton Outreach Is Everywhere

Joyce S. Pickering, Hum.D., Shelton Executive Director Emerita

Training for Teachers and Therapists

The Sequential English Education (SEE) approach is one of three Shelton methods of teaching reading to students with dyslexia and related disorders. SEE was written in the late 1960s by Dr. Charles Shedd. Revised, and is now in constant updates by **Dr. Joyce Pickering**. Joyce and **Amy Kelton** are co-directors of the SEE training course, which is accredited by International Multisensory Education Council (IMSLEC) and International Dyslexia Association (IDA). In the two-year cycle of training, there have been 46 teachers working on their teaching level or therapy level certificates. These teachers are from Shelton, Bridgemark Learning Academy in Tyler, TX, LIFT — an adult literacy program in Dallas, Dallas Juvenile Justice Program, All Children's Academy in Little Rock, AK, Levine Academy in Richardson, the May Center in Santa Fe, NM, Santa Cruz Montessori in Santa Cruz, CA., Fredericks, MD, and Los Alamos, NM. Sixteen teachers are working to achieve their Instructor Level certification. Dallas Baptist University (DBU) credit is available for this course, and teachers may complete a Master's in Multisensory Teaching upon completion of this course.

Montessori Applied to Children at Risk (MACAR)

For 20 years Shelton has offered this course, and many teachers have given feedback that it helped change the lives of students in their schools.

Beginning in 2012, Shelton was invited by the American Montessori Society (AMS) to offer an introduction to this course at the annual AMS conference. Offerings in Orlando, FL and Dallas have brought 84 teachers to the full summer training at Shelton. Each July the Shelton staff share their knowledge, strategies and skills with these teachers, to help children who learn differently. Over the years, hundreds of children have benefitted from the Shelton training, which was inspired by the work of Dr. June Ford Shelton, our founder.

Montessori Courses

Shelton is accredited by AMS and MACTE as a full training course in Montessori education at the Early Childhood and Elementary Levels. **Dr. Pickering** and **Pauline Novak** co-direct these courses. Both hold Montessori credentials.

Enrollment in the courses has grown to almost 20 in each course, boosted by a grant from the Simmons Foundation for scholarships, marketing and additional materials. This donation has provided significant scholarships to teachers who otherwise could not afford to attend. Nine of these teachers in training, are employed by Dallas ISD at Dealey Montessori and MATA.

Shelton's courses are known for the excellence of their instructors, most of whom are on staff at Shelton. Dallas Baptist University (DBU) credit for these courses is available.

Shelton Scholars

Offering an opportunity to children in Dallas and the surrounding community, Shelton opened the Scholars program in January 1991. Here students whose parents cannot afford a private school or private tutoring can receive one on one or small group instruction in reading, writing and spelling. Many have spent several years attending the Saturday and Summer programs and improved their skills to a fully functional level.

Students receive instruction in the SEE program under the supervision of **John Hodges**. There are approximately 30 students each semester and 70 in the summer program. Plans are underway for the spring Scholars sessions.



Callie Ginn and Scholars Coordinator John Hodges

Workshops and Seminars

Each year there are many requests for our Outreach staff to present at schools and conferences. This year presentations are being given in Dallas, El Paso, Lexington, SC, Albuquerque, NM, Cincinnati, OH, Boston, MS, Philadelphia, PA, Fayetteville, AR, Anchorage, AK, Toronto, Dundas, and Calgary, Canada, Barcelona, Spain, Beijing, China, and Tokyo, Japan. Traveling to take our *Shelton Way* to these locations are **Joyce Pickering**, **Amy Kelton** and **Pauline Novak**.

Shelton Speech / Language / Hearing Clinic

Stephanie Hicks, M.S., CCC/SLP, Director



The Speech Language Hearing Clinic had another great summer providing therapy not only to Shelton students, but also to students in the community. Thanks to **Lindsay Cobert, Kelly Lee, Avie Nikolopolous** and the assistance of two graduate students from The University of Texas at Dallas, we held an action-packed preschool *Language Adventures* program. This program

provides language enrichment for children ages three to five who may be developmentally delayed in their understanding and expression of language, in addition to articulation skills. During this six-week program, preschoolers are engaged in language-based activities following various themes, such as camping, circus, farm and sports.

Some of our preschoolers who participated in summer *Language Adventures* are continuing private therapy, making good gains in communication skills. The program has allowed our therapists to observe their preschoolers' communication skills in a group setting and then provide strategies to be used by parents at home and in the daycare/school setting.

We also have added several new programs for our Shelton students and community clients. These include *Articulation Adventures* (an intensive articulation program for children ages three to eight), *Cooking with a Purpose* (a language program that is incorporated into a fun cooking class for elementary students) and *Social Thinking Language* groups. The Social Language groups are ideal for students who are challenged to recognize and adapt to the subtle nuances and cues of social interaction. Participants are learning how their own social minds work — why they and others react and respond the way they do; how their behaviors affect those around them; how to navigate their behaviors for more rewarding social outcomes, including consideration of how others perceive and respond to these behaviors; and how to adapt to people and situations across contexts, from formal (classroom, workplace, etc.) to casual settings (hanging out, recess, etc.).

An important component of our mission is to aid parents in identifying young children with developmental delays and to recommend appropriate intervention strategies. Early intervention is critical, not only for filling in learning gaps upon which to build future language, but also in avoiding frustration and allowing a child to maintain a high level of self-esteem as he/she matures. One way to accomplish this goal is through our outreach screening program where we provide hearing, vision, speech/language and reading screenings to numerous private



(L to R) Lauren Skjott, Lindsay Cobert, Mary Passmore, Stephanie Hicks, Krista Norwood, Avie Nikolopoulos, Marilyn Aaron, Stephanie Weatherford

schools in the metroplex. This year we have provided screenings to 13 schools. We have identified numerous children with speech, language, and reading delays and have been able to conduct further assessments, provide therapy or refer to appropriate sources.

Another exciting component of the clinic is that we are now American Speech Language Hearing Association (ASHA) approved Continuing Education providers.



Shelton School, Speech Clinic & Evaluation Center is approved by the Continuing Education Board of the American Speech-Language-Hearing Association (ASHA) to provide continuing education activities in speech-language

pathology and audiology. See course information for number of ASHA CEUs, instructional level and content area. ASHA CE Provider approval does not imply endorsement of course content, specific products or clinical procedures.

This course is offered for 0.65 ASHA CEUs (Intermediate level, Professional area)

This means we can serve our school and community by hosting continuing education events for professionals and parents. One such event took place November 8, when we presented Pam Crooke, Director of Research and Clinical Operations and senior therapist at the Social Thinking Center in San Jose, CA. She spoke to our staff, parents and community professionals about how to implement Social Thinking in school and home activities.



(L to R) Conference attendees Deborah Harris, Ricki Ebner, Stephanie Hicks, speaker Pam Crooke, Krista Norwood, Rachel Dreiling

We are happy to welcome **Lauren Skjott** to our department. She previously worked in the school speech department. We are pleased to have such a professional staff, and we look forward to continuing a productive year.

Shelton Evaluation Center

Laure Ames, Ph.D., Director

The Shelton Evaluation Center has been busy over the summer and into the fall working with wonderful clients. When we evaluate a client through either a psychoeducational, neuropsychological, psychological, Autism Spectrum Disorder, and/or ADHD evaluation, our goal is to obtain a comprehensive picture of the client's functioning so that we can make appropriate recommendations. We also want clients to leave this Center feeling understood and hopeful.

One area of functioning that is often overlooked in evaluations of children and adolescents is oral language. Oral language is different from speech (articulation, voice, or fluency concerns), although articulation difficulty is often seen in the history of oral language impaired clients. Oral language refers to the ability to use the spoken word for expression and understanding across four language categories. These categories include the knowledge and use of words and word combinations (lexical / semantic), knowledge and use of grammar (syntactic), comprehension of complex language like idioms or inferences when the meaning is not directly available, and the awareness of the pragmatics of language, or how to use language appropriately in social situations. Difficulties in one or more of these categories may indicate a specific language impairment, a disorder that impacts approximately 6% of the population. When evaluating children and adolescents, it is important to consider that there might be an oral language difficulty if the client has had an early speech delay, articulation difficulty, a history of ear infections, trouble with reading comprehension or math word problems or written expression, difficulty with multi-step instructions, trouble communicating in the classroom, or has had difficulty with social communication. At the Evaluation Center, we use tests like the Clinical Evaluation of Language Functioning (CELF), Test of Language Development (TOLD), Comprehensive Assessment of Spoken Language (CASL), Test of Problem Solving (TOPS), and/or the Social Language Development Test to evaluate any or all of the categories of language. The Diagnostic and Statistical Manual (DSM-5) would code disorders in this area as a Language Disorder and / or Social (Pragmatic) Communication Disorder. It is important to determine if an oral language impairment exists

because these difficulties can impact both academic and interpersonal functioning. If an oral language difficulty is found to exist, speech-language therapy with a speech-language pathologist is recommended.

The Shelton Evaluation Center is unique in the Dallas area because our experienced staff is capable of offering multiple kinds of evaluations and integrating the information from these different evaluations in order to make appropriate and targeted recommendations for intervention and accommodations. Please call Ext. 2244 if you have any questions.



"I appreciate all you have done for us as a family and it has made me realize how important it is that children with learning differences get accurate and thorough diagnostic assessments."

A recent Evaluation Center client



(L to R) Mary Dryden, Laure Ames, Jacquelyn Pack, Stephanie McCain, Joni Williams

Accolades



Teague Elected to TAPPS Executive Committee

George Teague, Shelton's Director of Athletics, has been elected to the Athletic Executive Committee of Texas Private and Parochial Schools (TAPPS). He will represent Dallas / Fort Worth's 4A division.

Shelton Therapist Receives IMSLEC Award

Monica Orr, Middle School Speech Pathologist, received an *IMSLEC Innovator* award from the International Multisensory Language Education Council (IMSLEC) at the recent annual meeting in San Diego. She was recognized as an Outstanding Multisensory Language Educator (MSLE) Therapist.



Monica Orr



SHELTON RE-ACCREDITED FOR SEE

At the recent International Dyslexia Association (IDA) annual conference, **Amy Kelton** and **Joyce Pickering** represented Shelton's Sequential English Education Program (SEE), at the IMSLEC (see above) Committee Meeting. At this meeting Shelton was awarded a re-accreditation certificate for all levels of the SEE Training Program.

Says IMSLEC President Mary Farrell

*"It has taken many years of hard work by an ever-growing corps of dedicated, skilled, and tenacious individuals (including **Marty Cooley**, Executive Director of IMSLEC, and **Joyce Pickering**) for IMSLEC to have become the professional organization it is today—recognized nationwide for developing and maintaining the rigorous requirements needed for training teachers to work effectively with struggling readers."*

In its 19th year, IMSLEC accredited programs have trained over 9,000 teachers. IMSLEC currently has 39 accredited training courses with 93 sites.



(L to R) Mary Farrell, Kathy Rose, Joyce Pickering and Amy Kelton



Lower School News



First Good Citizens Awarded

The first Citizenship Awards of the year have been presented to the following students:

Austin Bertino

Ashley Delay

Alex Glass

Cooper Hardeman

James-David Marlett-Vasilas

Ford Meyers

These awards are earned by Primary students who demonstrate significant effort in academics, model good behavior in all of their classes and prove helpful to teachers and fellow students. Their photos are displayed all year on a bulletin board in the Lower School main hall.



Primary students continue to benefit from the hands-on learning provided in all of the Lower School Montessori classrooms. In order to help Primary students better understand the relative distances in the Solar System they went to the field to construct a scaled model. Primary also has an upcoming field trip to the Dallas Zoo.



Field experiment in progress



Green Meadows inhabitants entertain students

Lower School Activities Packed with Action

Lower School activities have been on the fast track this fall. Early Childhood (EC) classes have enjoyed Teddy Bear Day, Johnny Appleseed Day and Pumpkin Patch Day. EC shared the Fire Truck experience with Pre-Primary (PP) when a fireman came to campus, donned full regalia and allowed students to climb into the fire truck. PP also recently visited Green Meadow Farms to see a working farm and interact with farm animals. Fun was had by all.



Firemen capture students' attention



Upper Elementary School News



(L to R) Joey Sternberg, Garrett James, Ryan Abernathy, Vivian Quinby, Clay Kollinger, Lindi Harris and Tom Hoefken

Fifth Grade Goes Orange

Students in Jean Huddleston's math class measured how many feet in 10 seconds each student

could push an orange with his/her nose. They then took that information and created a bar graph of the class' results. Next they reconfigured the measurement of feet into what it would be in yards, feet, and inches. After that, they calculated the range, mode, median, and mean of the "Orange Push" results. The orange used for the exercise got a real workout.

Adjectives Add So Much

Students in Stephanie Worcester and Gabrielle Steinberg's advisory did some apple tasting in celebration of fall. They tasted seven different types of apples and came up with many more adjectives to describe them. To conclude the activity, the class made applesauce, another fall favorite.



Sy Black (L) and Pierson Roth say "yum" to apples



(L to R) Kayla Stone, Ryan Abernathy, Avery Heavner enjoy project

Fifth-Graders Study Native Americans

Students in Elizabeth Willis' social studies class enjoyed their fall project of studying Native Americans. They were creative with their models and displays.

Students Celebrated at Year-long Ceremonies

Each child in Upper Elementary is acknowledged at a special Celebration Ceremony at some point during the year. Ceremonies are held each six weeks and each student's unique qualities and interests are recognized as the child is celebrated by fellow classmates and family. "We are delighted to share the spotlight with each and every student," says Letah Samuelson, Head of Upper Elementary.

The following students were celebrated at the end of the second six weeks:

Third / Fourth Grade

Sydney Stewart
Brooke Gellman
Vinny Lane
Ethan Proctor
Betsy Sayah
Matthew Steinhart
Lauren Johnston
Weston Banowetz
Sam Marchant
Mia Winans
Jake Riggs
Turner Cuellar
Sarah Bransky
Ruthie Grossman
Caden Westman

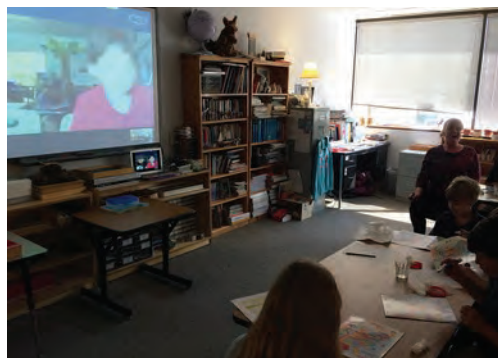
Fifth Grade

Dani Roberts
Jack Pratt
Kayla Stone
Seth Dauber
Ryan Abernathy
Madeleine Wing
Avery Heavner
Peyton Frady
Adam Dubner
Cole Osborn
Drew Stuckey
Andy Cobb
Elliott Desaloms
Jillian Jackson
Braxton Myers

Shelton Skypes with ????

Beth Goodall and Casey Barnett's students conducted a Skype session with another third grade class somewhere in the world. The activity is called #MysterySkype. While teachers know where the class is located, the students do not, nor does the partner class. Each class takes turns asking a series of "yes" or "no" geography questions to determine where the other is located, e.g. "Are you located on the continent of North America?"

"Do you live east of the Mississippi River?" Partner classes love the interactive geography lesson.



Students view mystery Syperers

Middle School News



(Top to bottom) Sam Korman, Lauryn Green, Brianna Ealey, Prichard Deering, Garret Kembel, Haven Hinds, Jenna Abbasi

Student Council Packs a Full Fall Schedule

The Middle School Student Council packed in a full fall agenda. Activities have included a back-to-school teacher appreciation breakfast, a party to welcome new students, a sixth grade bowling party, the annual Halloween parade, a bake sale fundraiser, and a Jean Day fundraiser (see page 23, *Shelton Committed*).

Officers for 2014-2015 are:

Co-Presidents – Brianna Ealey and Prichard Deering (8th)
 Vice President – Lauryn Green (8th)
 Treasurer – Sam Korman (7th)
 Secretary – Lillia Farlow (7th)
 Historian – Tian Ehrenreich (8th)
 Public Relations Director – Bella Vitullo (8th)

Officers and representatives traveled to San Marcos to attend the Texas Association for Student Councils meeting in November. **Sarah Helffrich** and **Ann Wright** are faculty sponsors of the group.

Spirit of Shelton Awards Presented

Congratulations to the following students who were nominated by their teachers for their leadership qualities, academic excellence, kindness, and exemplary behavior. Each was recognized at an honors assembly in November:

6th Grade

Jake Aron
 Gavin Cruz
 Slayton Pierson

7th Grade

JD Gregson
 Madelyn Bain
 Raella Papes

8th Grade

Connor Housewright
 Del Josephs



This "family" prepares decorations for Cabell's holiday boxes

Families Program Continues Tradition of Giving

Shelton continues its *Families* program, which connects students across different divisions. Students meet their family members in the fall and each family meets throughout the year to work on select projects. This year the *Families* service project is to interact with Dallas ISD's Cabell Elementary School. At the November meeting, *Families* participants decorated bags that will be delivered to Cabell. Students are collecting new mittens, gloves, knitted caps, scarves and socks for the bags. **Stephanie Crowe** and **Lisa Reese** are faculty sponsors of the group.

Field Trip Goes Digital

The eighth grade digital photography classes had a fun field trip to the Dallas Arboretum in October. Students captured the beauty of the sights with their photos. **Christy Fowler** is their instructor.



Stella Fite's butterfly photo



(L to R top) Grace Orth, Isabel Walsh, Tian Ehrenreich, Caitlin Dailey, Kara Eisenstat, Lauryn Green, Christina Small, Lauren Shoemaker, Jordan Powers, Stella Fite
 (Bottom) James Nayfa, Josh Segert, Cole Fisher



Lauren Shoemaker's photo

Project Heroes

Cuban born artist Rolando Diaz spoke to Middle School students November 12 at the first *Project Heroes* program of the year. His works of over 30 years can be found hanging from New York to South America. *Project Heroes* features speakers who have overcome obstacles and gone on to lead successful lives. **Chuck Locke** is faculty coordinator of the program.



Chuck Locke (L) with artist Rolando Diaz

Upper School News

Homecoming 2014: *Around the World*

Upper School celebrated Homecoming in November. This year's theme was *Around the World*. Activities included dress-out days, a Pep-nic lunch catered by Bubba's Chicken, Class Olympics, a Blacklight Pep Rally, the football game against Carrollton Prince of Peace, and the homecoming dance at Addison Event Center. There was also an all-school pep rally to recognize fall sports teams and announce the Homecoming Court:

- Freshman Prince and Princess: Luke Garza and Lizzie Cleveland
- Sophomore Prince and Princess: Kobe Boyce and Brinson Ellard
- Junior Prince and Princess: Aidan Eeffing and Anna Jordanou
- Senior Homecoming Court: Andrew Johnson, Joseph Wales, Caroline Roberts, and Paige Warren
- King and Queen: Jack Madden and Grace Verges

It was a fun week for all to engage in *Shelton Pride* and *Shelton Spirit*.



(L to R) Paige Warren, Caroline Roberts, Grace Verges, Joseph Wales and Andrew Johnson. Not pictured is Jack Madden



(L to R) Officers Jack Madden, Grace Verges, Adrianna Luedtke, Taylor Mitchell, Nathan Patton and Shelby Brand

StuCo News

Upper School Student Council has spearheaded numerous fall activities: Halloween Carnival (with a spooky parade for fifth graders to teach trick-or-treat safety), Homecoming, and a Thanksgiving feast sponsored by the Pride and Patriotism Committee. Next on the horizon are the annual Neon Nights Dance and Winter Formal Dance.

Officers for the 2014-15 school year are:

President – Grace Verges
Vice President – Jack Madden
Secretary – Nathan Patton
Treasurer – Taylor Mitchell
Historian – Adrianna Luedtke
Parliamentarian – Shelby Brand

Kathryn Baird and **Zach Paxton** are StuCo sponsors.

NHS Students Tutor Others for Exams

Members of Shelton's National Honor Society (NHS) conducted exam week after-school tutoring sessions in early December. Tutoring was open for students in grades six through twelve, with a high response from Middle School students. NHS President **Grace Verges** organized the events, which took place in faculty sponsor **Dan Hanson's** classroom. Participants received community service hours for their participation.



Tutoring session engages many

Fall Awards Bestowed

Congratulations to the following *Award of Excellence* recipients who received awards for the first nine weeks of school:

9th - Brian Coleman, John Perry-Miller

10th - Kyle McCullough, Mitchell Weiner

11th - Ellie Crosland, Adrianna Luedtke, Andrew Reader

12th - Caroline Clendening, Merritt Ford

Also recognized as *Shelton Pride* honorees were:

Perseverance: Grayson Crump (12)

Respect: Alex Trepagnier (10)

Inspiration: Kat Freudenthal (9)

Dedication: Cade Kennedy (11)

Enthusiasm: Bryce Henderson (10)



(L to R) Zac Ladd, Albert Perry, Paige Warren, Phil Romano

Seniors Study Success with Phil Romano

The Class of 2015 is marking the year with special events. The most recent was a luncheon that featured speaker Phil Romano on November 12. Romano, a Dallas restaurateur, entrepreneur, investor and artist, engaged students and their parents on the topic of success.

Romano told students, "My goal is to be MAD (making a difference) everyday, and I want you to be mad, too." Romano shared other personal tips for success – responsibility, integrity, communication, and repeating whatever formula has brought success thusfar.

Senior class president **Paige Warren** and vice president **Albert Perry** presented Mr. Romano with a \$500 donation to Hunger Busters, a not-for-profit organization founded by Romano and his wife. Said Perry, "Thank you for sharing your experience with us. We believe we are a group of highly creative students who have the potential to become successful like you. Expect big things from us!"



Robbins Family enjoys senior luncheon



Dayna and Jacob Freudenthal at senior event

Fine Arts Features



Kyle McCulloch
(Nicholas Nickleby)

Nicholas Nickleby Was Fall Theatre Highlight

Upper School Theatre Arts presented Charles Dickens' *Nicholas Nickleby* October 23-25. Over 56 Upper School students were involved in the production in both cast and crew. The show played to sold-out houses each night and was a hit with each audience.

Next on Shelton's playbill is the musical *Hello Dolly*, which will be produced in February.



Kyle McCulloch (L) as Nicholas Nickleby and Colton Marshall as Smike



(L to R) Alyse Rosenblatt (Lady Hawk), Reese Walters (Sir Frederick) and Rachel Nelson (Madam Mantalini)

Art Everywhere

Mandy Dockweiler's Upper School classes have been involved with silk painting this fall, and students have created some outstanding works.



Rylie Collins with her silk screen



Vocal Charge in action



Drumline commands attention

Grandparents' Day Showcases Performing Groups

Several performing groups delighted some 1,000 visiting grandparents on November 21. **Ken Utz** directed Lower School music students; **Blair King** conducted the Vocal Charge choir; **Jerry Bishop** marked the tempo for the Shelton drumline, which roused the entire audience.

Shelton Again Partners with DMA

Fifth Grade / Middle School art instructor Sherry Houpt will coordinate Shelton's involvement with the Dallas Museum of Art's (DMA) Young Artist Program. Shelton is one of 12 public and private schools to be selected for the honor. The program culminates with a special exhibit in April. Shelton has long been connected with DMA community programs. This year's program, *Self Portrait*, will involve seventh- and eighth-graders.



(L to R) Seventh-grade artists Lillia Farlow, Madelyn Bain, Izzy Grant, Ariana McGarity, Harper Hinds



Connor Bigenho accepts trophy from Miss Texas

Shelton Bands Take Holiday Honors

Both the band and the Drumline won their respective divisions at the Richardson Christmas Parade on December 6. There were more than 113 entries featuring 2,600 participants. The band won First Place Youth Open Marching Division. The Drumline won First Place Junior / Senior High Division. Trophies were presented by Monique Evans, Miss Texas.

Shelton to Attend ISAS Fine Arts Festival

Shelton will send students to the annual Independent Schools Association Southwest (ISAS) Fine Arts Festival in March 2015. Shelton will be represented in programs for art, choir, photography, band, film and theatre.



Band performs for holiday concert

From the Head of School

Linda Kneese, M.Ed., CALT QI



Spirit Runs High at Shelton

The Shelton Spirit Organization comprises Middle School Cheerleaders, Upper School Varsity Cheerleaders, Chargerettes, Wranglers, and Mascots. **Britt Mitchell** and **Dana Rubin** coach the Middle School Cheerleaders. The Varsity Cheerleaders, Wranglers, and Mascots are coached by **Britt Mitchell** and **Debbie Brooke**. **Christina Rosen** is the coach for the Chargerettes drill team. The students who participate in these groups help in many ways beyond pumping up the spirit at athletic events and pep rallies. These students often serve as greeters at carpool, Open House, Grandparents' Day, and other events. They are an integral part of the Shelton culture and help in any way that they are asked.

Shelton Middle School Cheerleaders

Jenna Abbasi
Sofi Barbara
Emily Bernstein
Kara Calhoun
Katie Clay
Izzy Desaloms
Kara Eisenstat - Captain
Darcy Fisher
Stella Fite
Jenna Fonberg
Maria Gabelmann
Taylor Halliburton
Ally Hickey
Harper Hinds
Haven Hinds
Kyndall Hodgson
Jadyn Jannasch
Delaney Josephs

Lindsay Kaplan
Kate Kelly
Madison Mainer - Captain
Margot Marron
Abby Marshall
Arianna McGarity
Tess O'Neill
Raella Papes
Claire Pino
Lucie Ridgeway
Alexandra Riley
Sami Roberts
Kate Rogers
Christina Rae Small - Captain
Bella Vitullo - Captain
Isabel Walsh
Genesis Williams



Middle School Cheerleaders

Shelton Varsity Cheerleaders/Mascots/Wrangler

Seniors

Gretchen Botens
Caroline Clendening -
Co-Captain
Caroline Keehn
Jessica Taken - Co-Captain
Grace Verges - Captain

Junior

Cheyenne Jenkins

Sophomores

Brinson Ellard
Lauren Isett
Isabel Kennedy
Janessa Myers

Freshmen

Caroline Borders
Lizzie Cleveland
Kate Clifford
Anna Cramm
Lexi Galardi
Caroline Jones
Anna Rose Sloan
Anna Wiggins

Mascots

Freshmen

Kat Freudenthal
Matt Matsil
Landon Meiteen

Wrangler

Sophomore

Bryce Henderson



Varsity Cheerleaders, Mascots, Wrangler

Shelton Chargerettes

Seniors

Molly Crisp - Captain
Caroline Roberts
Kelsey Barton - Manager

Juniors

Shelby Brand - Line Sergeant
Maddy Greenberg
Hannah Howard
Anna Howley
Alex Ikard
Lauren Jenkins - Lieutenant
Haley Thomas - Lieutenant
Brianna Trixler - Line Sergeant

Sophomores

Cailey Ginn - Line Sergeant
Kendall Moore

Freshmen

Annabelle Braggalone
Maddi Dunton
Sarah Abel - Manager



Chargerettes

Often seen and heard around Shelton is the Shelton Drumline. This group is under the direction of **Jerry Bishop** and **Ken Utz**. These students put on an amazing performance wherever they go.



Drummers



Shelton Drumline

Seventh Graders

Joshua Banks
Lucas Troup

Eighth Graders

Etan Cohn
Dom Gaffney
Gabe Imery
Joe Manna
Reilly Rickert

Freshmen

Max Besser
Timmy Gildersleeve
Cameron Mason
Adam Winn

Sophomores

Jake Johnson
Luke Langlais
Noah Allen

Juniors

William Chilton
Noah Dardick

Seniors

Connor Bigenho
Dimitri Secker
Hannah Wolf

Alumni Updates

Janie Robertson, Annual Fund / Alumni Relations Manager

- **Hal Ryan '01** received the *Shelton Heritage Award* in May 2014 for his outstanding service as an alumnus serving as a Shelton staff member.



Hal Ryan

- **Anthony and Tish Lavie Sherman '00** and her husband are expecting their first child in December 2014.



Anthony and Tish Lavie Sherman



Cameron and Evan Purvis

- **Evan Purvis '01** married Cameron McCay in August 2014.

- **DeWitt Corrigan '05** married Allison Rodman August 2014



Allison and Dewitt Corrigan



David T. Martineau

- **David T. Martineau** Attended Shelton 1976-1981. President and founder, Martineau Petroleum Inc. "A rising star of oil and gas" — *D CEO Magazine*. Board member, Texas Alliance of Energy Producers.

- **Zach Paxton '09** is back at Shelton teaching ethics and geography in the Upper School, and sharing a classroom with fellow alumna **Kathryn Baird '07**. Shelton staff are excited to have another alumnus on board.



Kathryn Baird and Zach Paxton



André Dowd

- **Andre' Dowd '07** received the *Alumnus of the Year Award* for his dedicated service to the Executive Board of the Shelton School Alumni Association.



Adison Allen

- **Adison Allen '04** gave the 2014 Graduation Commencement speech in front of the new alumni class. He is Post Production Supervisor of Content Media in California.



Walton and Lindsey Grayson

- **Walton Grayson '07** became engaged to Lindsey Cross in December 2013.

- **Trevor Ball '03** competed on the Food Network's show *Guy's Grocery Games* and won. He will be competing again on *The Food Network on Cut-Throat Kitchen*. Tune in to see him seek a second victory.



Trevor Ball



Tiffany and sons

■ **Tiffany Phelan O'Connor '02** is now a current Shelton parent, with her son Noah enrolled in third grade.

■ **Rebecca Bongiorno '10** spent the summer with Shelton Scholars as an assistant with the Sing, Pop, Broadway and Musical theater classes.

If you are an alumnus currently job-seeking, please take advantage of the **Career Networking Program** to help with your search. Janie Robertson, our Alumni Relations Manager, will help you connect with Shelton parents and other alumni working in various industries.

■ **Courtney Cook Dios '10** is now a current Shelton parent, with sons Heston (1st) and Webb (EC) attending Shelton School! She is also serving as a co-chair for the 2015 *Shelton Stampede Auction*.



Courtney and family

If you would like to be involved with the **Shelton Alumni Association**, volunteer for any events, be a class representative, track down missing alumni, or help with fundraising, please contact the Alumni Office at alumni@shelton.org or Janie Robertson at 972-774-1772, Ext. 2501.



Off the Shelf **Library News**

Melissa Harrison, Library Media Coordinator

Fall highlights include:

- An amazing Book Fair, coordinated by our Parents' Association Volunteers (chaired by Lauren Kaplan and Amy Zambrano) — the Heffernan Elementary and Primary Library was packed with people for a week, and we raised over \$12,000
- Continuation of Upper School's *Girl Power* and *Man Cave* book clubs
- Placement of a library calendar on Shelton's portal
- Community service involvement with Santa's Workshop project at Fort Hood — we provided four boxes of books for military families
- Upload of over 10,000 videos from Curriculum Video into our Destiny Library. Our students and faculty have many educational opportunities through this catalog system.



Girl Power Book Club brings lots of discussion

Spotlight on Sports

George Teague, Director of Athletics, Head Football Coach

Golfers Tee Off for Shelton

Some 144 golfers teed off for Shelton on September 2 at Cowboy Golf Club in Grapevine. Highlights included golfing, camaraderie and goody bags. The tournament title sponsor was **CUDD Energy Services**. Shelton parents **Glenn Mitchell** and **Ron Pleasant** once again co-chaired this event. Committee members included **Patti Bongiorno**, **Ed Copeland**, **David Goldstein**, **Tom Gray**, **Kelly Hall**, **Jeff Hughes**, **John Madden**, **Gilbert Nettleton**, **David Schrader** and **George Teague**. Over \$65,000 was raised, with proceeds benefitting Shelton athletics and tuition assistance. The 2015 tournament is scheduled for September 28, 2015.



(L to R) David Schrader, Ron Pleasant, Mike Copeland, and Glenn Mitchell at tournament

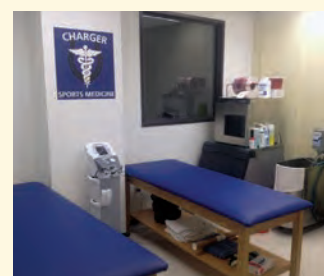


Sports Enhancement Center Now in Full Use

Our Sports Enhancement Center (SEC) opened in January, 2014. The 4,100 square foot facility is a tremendous asset to all athletic programs. It is used for off-season training and summer programs specifically designed for our athletes. The facility has state of the art lifting and cardio equipment including eight full lifting platforms and eight pieces of cardio equipment. The facility is used by our sports medicine team for rehabilitation and injury prevention. Training room equipment includes an electrical stimulation machine, compression units, whirlpools and treatment tables. Both male and female athletes have access to the Sports Enhancement Center.

Our vision is to remain on the cutting edge by installing a video system that gives instant feedback to athletes and coaches while lifting is being performed.

Many thanks to the families and community sponsors who made this a reality for our teams.



Charger Athletic Training Program in Expansion Mode

Athletic trainers are often spotted on the sidelines of competition and the Shelton Charger Athletic Training team is no different. Their sideline access ensures that they are on the frontlines of preventing, diagnosing and treating sports injuries when the time arises. Though still young, the Charger Athletic Training Program promotes education and practical application opportunities in sports medicine and athletic training. Their focus is beyond the classroom. We believe that by exposing students to different sports medicine environments and opportunities, we provide knowledge that will last a lifetime.

Students engage in clinical education opportunities on campus as well as at several facilities in the Metroplex. Under the instruction of Athletic Trainer **Krystal Cunningham**, students practice and perform skills related to evaluation, diagnosis and treatment of athletic injuries. In addition to evaluation, students also learn skills for emergency care, taping and bracing. In the last two years, the Charger student trainers and staff have been able to visit and tour athletic training facilities for the SMU Mustangs, Dallas Mavericks and the Dallas Cowboys. These opportunities offer staff and students collaboration with athletic training and health care professionals via shadowing and hands-on instruction in a variety of settings.

College Athletes Are Everywhere

Many Shelton athletes continue their athletic careers in college. We are supportive of the continued growth and competitiveness of all our sports teams. Having an extra class period for athletics fulfills our desire to keep our teams in training for the entire year. Thanks to unified dedication of families, students and coaches, many athletes are now focusing on the goal to become collegiate athletes. The following graduates are currently competing at colleges and universities:

Alyn Jackson ('11)	Avila University (Football)
Hank Aldous ('12)	Hendrix College (Basketball)
Phillip Bouillion ('12)	University of Texas at Tyler (Track & Field)
Meredith Cook ('12)	Millsaps College (Track & Field)
Seth Goodwyn ('12)	Austin College (Football)
Samantha Bongiorno ('13)	Macalester College (Volleyball)
Max Cassidy ('13)	Hendrix College (Football)
Ben Luedtke ('13)	Hendrix College (Football)
Maggie Thomas ('13)	Sewanee: The University of the South (Track & Field, Cheer)
Tori Walters ('13)	Hendrix College (Track & Field, Ultimate)
Miles Beck ('14)	University of Denver (Tennis)
Tony Billings ('14)	Sterling College (Football)
Tanner Owens ('14)	Northwestern State University (Track & Field)



SPA co-presidents Annette Matteson (L) and Lynne Turner

The Shelton Parents' Association (SPA) has had a flurry of fall activities and done an amazing job of supporting everything Shelton. Major events have included the

- Annual Book Fair
- Boosterthon
- Fall magazine and memory-making fundraiser
- Get-acquainted parties for parents
- Grandparents' Day
- Dads / Kids Annual Retreat to Sky Ranch

SPA co-presidents for 2014-15 are **Annette Matteson** and **Lynne Turner**. **Adam Dougherty** and **Todd Gryzch** head the Dads organization.



(L to R) Sudha Bhatt and Neesha Negandhi at Grandparents' Day



Leon Kaplan with grandsons Alec (L) and Asher at Book Fair



Happy Sky Ranch attendees



(L to R) Sebastian Hahsler, Glynn Rasor, and Boosterthon chair Susan Rubin



Shelton Stampede Auction — Bringing It Back Home

Exciting plans are in the making for Shelton's annual Stampede benefit auction, which takes place February 21, 2015. The fun event takes place on Shelton's campus, with live and silent auctions, dinner, and live entertainment provided by the Icehouse band. Heading up the Stampede are **Karen Higgins**, **Mickie Bragalone** and **Courtney Dios**.



(L to R) Auction chairs Mickie Bragalone, Karen Higgins and Courtney Dios promote raffle

Community Connections Beyond the Campus

Shelton Community Rolls Up Sleeve

Shelton hosted its annual blood drive with Carter BloodCare on October 7. Thirty-six units of blood were collected from staff, faculty, parents and students, including several first-time donors.



(L to R) Sam Feroze and Christian Cole are first-time blood donors

Shelton Helps Santa in His Workshop

As part of Shelton's 2014 Book Fair, parents and staff provided four big boxes of books for Ft. Hood's Santa's Workshop. According to Middle School Librarian **Margaret Simmons**, 1,700 military families with 4,000 children are given a toy, book, stuffed animal, video and board game. Every military family is so appreciative of the gifts.



Chargers for Change Promote Attitude of Gratitude

Shelton's Chargers for Change (CfC) has been active with numerous projects that demonstrate their mission to *make a difference in the world*. The organization, comprising 40 students, meets monthly to study the needs of local and global communities and focuses on how to identify and best support the work, financially and otherwise, of various organizations whose missions address these needs. Working with the Dallas Foundation, students identify best practices of philanthropic support and target their activities accordingly. Students research and select organizations to fund annually.

On Veterans Day, CfC held an assembly and expressed their thanks to staff and faculty veterans who spoke to students



(L to R) Jennifer Sands, Cullen Kampine, Dr. Alex Schilpp, Marc Shepherd, Joseph Wales and Christian Cole on Veterans Day

about their respective tours of service. Students also created a photo bulletin board of family veterans, living or deceased. Cullen Kampine did an iMovie compiling all the photos.

CfC also sponsored *Gratitude Week* through several Thanksgiving activities, including a *Gratitude Graffiti Board* on which students and teachers could post notes. Several members of CfC also visited with Upper Elementary students during lunch and engaged them in conversation about the spirit of Thanksgiving.

CfC students collected new and gently used coats and blankets and delivered them to Dallas ISD's Cabell Elementary School on November 25, for distribution to students in need of warm clothing. Shelton partners with Cabell through the local non-profit Commit organization.

Officers include: **Caroline Keehn** (President), **Christian Cole** (Vice President), **Grace Verges** (Secretary) and **Marilyn Cracken** (Historian). Board members include **Cullen Kampine**, **Jennifer Sands**, **Esther Verges** and **Joseph Wales**. **Judy Browne** serves as faculty sponsor.

John and Carol Levy, parents of Shelton graduate Allen Levy, funded the CfC project through a grant to the Dallas Foundation. The idea for the organization was sparked by Shelton graduate Barrett Cole, whose brother Christian is now a CfC officer.

Shelton Remains Committed to Commit!



Shelton continues in a second-year partnership with Commit!, an organization of over 45 institutions collectively representing over 400,000 students. Their mission aligns educational advocates across Dallas County to increase the number of children graduating with some form of higher education degree. Under **Amy Kelton's** leadership, last spring the Shelton community accomplished the following:

Collected over 400 books through the *Families* program for Cabell Library

Donated over 1,900 books through the Freshman Book Drive so that Cabell students got their own book for summer reading at home

Sponsored Senior Underwear Drive to provide new items for students in need

Sponsored Sophomore Uniform Drive to collect khaki pants for donation

Collected books year-round in two bins for ongoing donation

Baked cupcakes for Cabell Teacher Appreciation

Provided art supplies, balls and jumpropes

This year Shelton has continued its involvement with Cabell by:

Sharing speech / language programs from Shelton's Speech Clinic with Cabell's speech therapists

Sharing Shelton's Choices program activities with Cabell's after school safe place program

Raising \$1,052 through Middle School Jean Day to provide Cabell with *Time for Kids* subscriptions in classrooms

Delivering 20 meals for Thanksgiving made possible through Shelton's Middle School Cheer Team

Providing kits and DVDs for auditory / reading skills through freshman Kat Freudenthal's Girl Scout Silver Award Project

(L to R) John Hodges,
Anna Rose Redman,
Kat Freudenthal,
Sophia DesJardins,
Amy Kelton with
reading kits



Gabe Imery (L) and Aidan Smith collect the goods

Middle School Student Council Brings In the Cans

At Thanksgiving the Middle School Student Council spearheaded a collection of over 3,402 canned food items for the North Texas Food Bank, providing 2,590 meals.

Shelton students, staff and parents serve the community in a wide array of community service activities. In 2012-2013, Upper School students alone completed 9,800 hours of community service during the year. From filling shoeboxes for the homeless, to playing Bingo with nursing home residents — teaching Shelton students to become contributing citizens of the world is a tenet in a Shelton education.

Staff Stuff

Shelton Welcomes New Staff

Shelton is pleased to announce its new employees for the 2014-2015 year:

Robert Baxter	Information and Security Officer
Veronica Bradford	Middle School, Teacher
Mathieu Debic	Upper School, Teacher
Sue Goldston	Administrative Assistant, Lower School
Beth Goodall	Upper Elementary, Teacher
Tricia Harden	Upper Elementary, Teacher
Stephanie Herubin	In-house Speech Pathologist, Middle School
Lena Hilbert	Upper Elementary, Teacher
Jill Keppler	Middle School, Teacher
Debbie Knox	Director of College / Career Advising
Diana Liese	Controller
Mark Malcolm	Upper School, Teacher
Amanda Nikolopoulos	In-house Speech Pathologist, Middle School
Zach Paxton	Upper School, Teacher
Ava Reis	Middle School, Teacher
Christina Rosen	Lower School, Teacher Associate
Stacey Ruff*	Middle School, Teacher
Susan Ruff	Middle School, Teacher
Marc Shepherd	Facilities Supervisor
Jennifer Stevens	Lower School, Teacher
Carol Yartym	Upper School, Counselor

*started March 2014

In addition to new staff, several current employees have new roles:

Liz Barnett	Administrative Assistant, Middle School
Leslie Cashdollar	Accounting Associate
Jenny Cheatham	Head of Upper School
Christine Davis	Assistant Head, Lower School
Linda Kneese	Head of School
Zac Ladd	Dean of Students, Upper School
Tina Larson	Director of Student Information Resources
Kelly Lee	Lower School, Speech Language Pathologist
Amie Moyer	Lower School, Teacher
Pauline Novak	Co-Director of Montessori Teacher Education Center
Lauren Skjott	Speech Clinic, Speech Language Pathologist
Marvel Washington	Administrative Assistant, Upper Elementary
Liz Willis	Upper Elementary, Teacher

Wellness Program Alive and Well at Shelton

Shelton's Wellness Program offers ongoing experiences for all employees, regardless of whether they are on Shelton's medical insurance plan. Activities include wellness walks, an annual health fair, biometric screenings on campus, and recognition of employees who demonstrate a commitment to a healthy lifestyle. Upper School instructor **Sandy Balis** is the latest wellness champion. Nominated by her colleagues, she can often be spotted on the stationary bike during a break time.



Brendel Wins Build Your Own Professional Development Prize

Middle School instructor **Chris Brendel** was awarded \$3,000 as winner of the 2014-15 *Build Your Own Professional Development* contest. Faculty and staff are given the opportunity to submit a special project that carries special significance for the employee. Brendel will travel to Hawaii this spring to visit Mauna Kea Observatory, Volcano National Park, and several reefs. He will accompany graduate students from the Hawaii Institute of Marine Biology during an outing to collect data on accretion-erosion balance in Maunaloa Bay with Dr. Megan Donahue. Brendel plans to blog about his experiences, as well as connect with his Shelton students via Skype and Twitter.



Sandy Balis



SHELTON SCHOOL Annual Report of Gifts 2013 - 2014

Gifts

Annual Fund
Endowment
Financial Aid

Heritage Society
Matching Gifts
Parents' Association Gifts

Restricted Gifts
In-Kind Gifts
Delphi Society

Since 1976, Shelton has been blessed with gifts that have helped us make *the difference* in a student's life. We are grateful to all who have given a gift of any type. No return on investment will ever be greater than that of a child's education.

2013-2014 Board of Trustees

Executive Committee

Chairman of the Board	Gary L. Webb
Vice Chairman	Paul Neubach, M.D.
Chairman Emeritus	James B. (Boots) Reeder
Executive Director/CEO	Suzanne Stell
Executive Director Emeritus	Joyce S. Pickering, Hum.D.
Secretary	Leon Kaplan
Treasurer	Robert G. Pickering, Ph.D.
Additional Members	Benton W. Markey David Martineau Holly Vitullo

Members

Charlotte Jones Anderson	Benton W. Markey
Edwin S. Bell	David Martineau
Bert Blair	Paul Neubach, M.D.
Kevin D. Boscamp	Barbara Novotny
Jean Ann Brock	Patricia A. Pace
J. Crozier Brown	Joyce S. Pickering, Hum.D.
Diane Byrd	Robert G. Pickering, Ph.D.
Mark C. Carney	William F. Rapier
Charles G. Dannis	James B. (Boots) Reeder
Christopher K. Dreiling, M.D.	Janice Ryan
Nancy Diebolt	Susan N. Schwartz
Christopher Geymuller	Pat Smith
Susan Griffiths	Suzanne Stell
Clifford Hahne	Andrew Teller
Edward J. Heffernan	Dee Velvin
David T. Helffrich, Jr.	Philip M. Verges
Kenneth J. Hughes	Holly Vitullo
Susan P. Jarzemsky	Gary L. Webb
Leon Kaplan	Bobbie Sparks Williams
Veronica Lewis	Keith Williams
Ken Luce	Mary Young

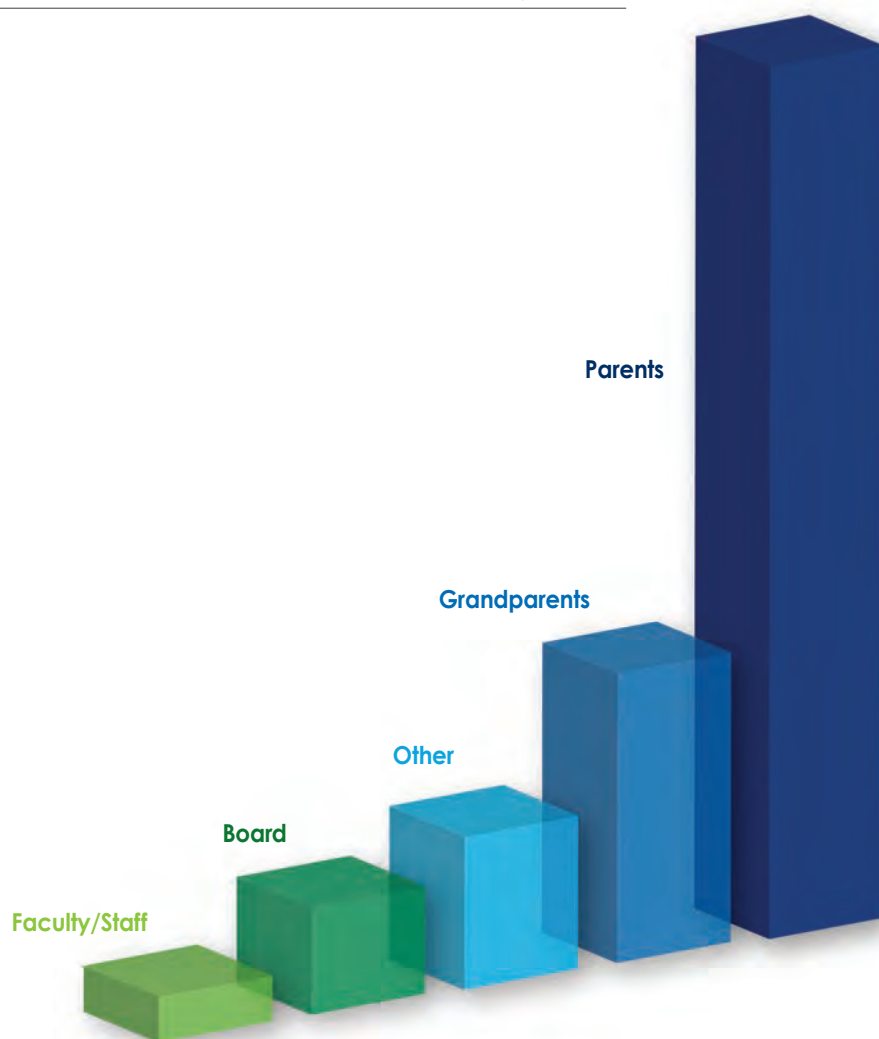


Shelton thanks its Board of Trustees for supporting the entire organization in so many ways

2013-2014 Report of Gifts & Sources

Type of Donation	No. of Gifts	Amount
Annual Fund Gifts	1053	\$617,346
Endowment	30	\$768,115
Financial Aid	41	\$126,025
Restricted Gifts	58	\$258,828

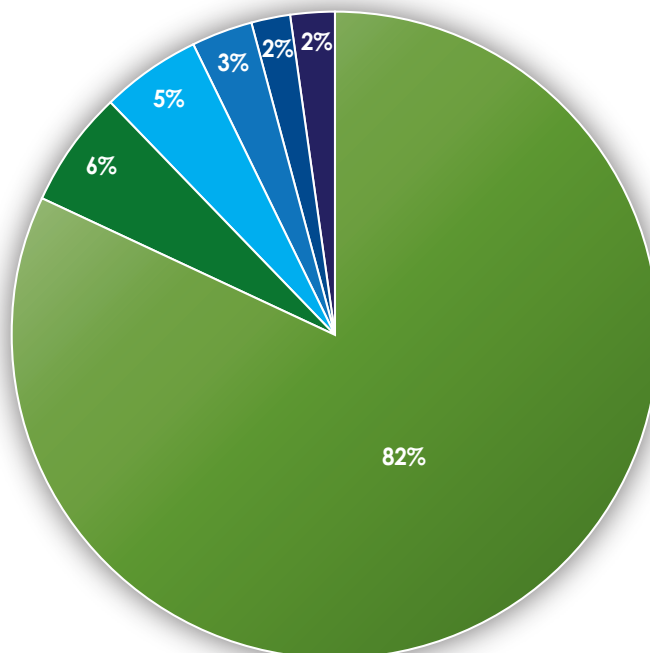
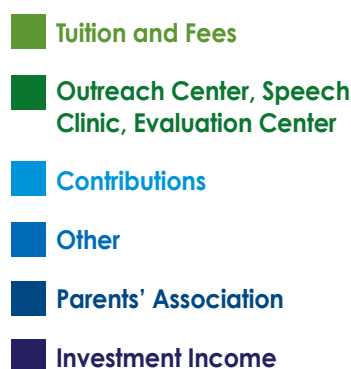
Annual Fund Breakdown	% of Total	Amount
Parents	60%	\$369,422
Grandparents	19%	\$188,059
Others	10%	\$64,645
Board	8%	\$48,500
Faculty/Staff	3%	\$16,721



2013-2014 Revenues & Expenses

Revenues

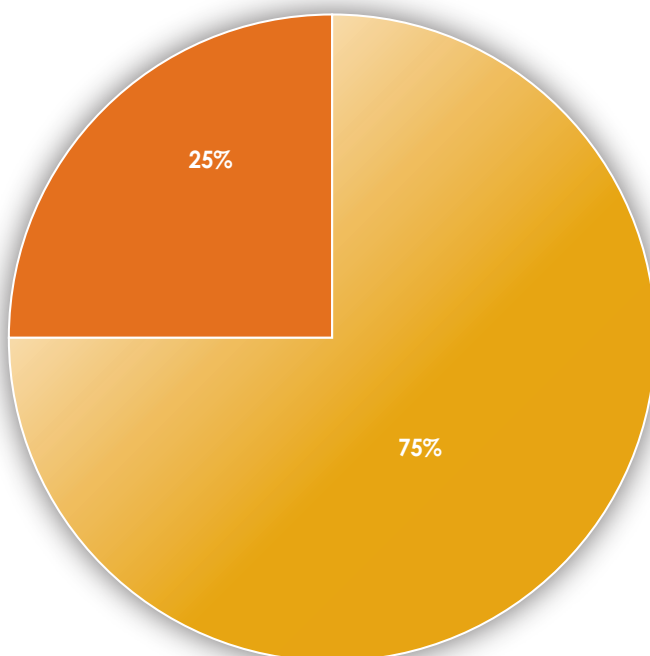
Tuition and Fees	\$19,486,288	82%
Outreach Center, Speech Clinic, Evaluation Center	1,510,546	6%
Contributions	1,124,923	5%
Other	726,646	3%
Parents' Association	537,409	2%
Investment Income	510,247	2%
Total Revenue	\$23,896,059	100%



Expenses

Salaries and Benefits	\$16,837,513	75%
Educational and Operating Expenses*	5,651,770	25%
Total Expenses	\$22,489,283	100%

*Includes Depreciation



2013-2014 Parents' Association

Co-Presidents	Christine Horstman Annette Matteson
Past President/Parliamentarian	Dayna Freudenthal
Secretary	Tammy Davis
Treasurer	Darcy Preheim
VP Communications	Brennan Newell
Publications Chair	Lisa Duan
Publications Editor	Laurel Hoitsma
Directory Ad Sales Chair	Tatum Tuthill
Volunteer Coordinator	Debra Clark
Fundraising	
Fall Fundraiser Co-Chairs	Margaret Walsh Jay Calloway
Charger 5K Co-Chairs	Elyse Lemery AK Stewart
Charger Corral Chair	Darcy Preheim
Pen Assistant Manager	Myra Gingold
Volunteer Coordinator	Betty Preston
Community Partners Chair	Michelle Gifford
VP/Auction Party Co-Chairs	Heather Cronister Rachel Dreiling

VP Community Relations	Lynne Turner
Grade Level Liaisons Chair	Lara Proctor
Dads' Club Co-Chairs	Scott Stone Pat Heptig
Book Fair Co-Chairs	Gretchen Heffernan Carreen Carson
Hospitality Chair	Kimberly Armour
Grandparents' Day Co-Chairs	Sheilagh Cooper Susan Derr Locie Boggs
Holiday Happiness Chair	Deb Pullen
Lunch with Dad Co-Chairs	Tammy Davis Linda Vandercook
New Parent Dinner Co-Chairs	Linda Caldwell Jacquie Goldstein Marcy Parker Lynne Turner Cindy Uptmore
End of Year Luncheon Co-Chairs	Linda Caldwell Jacquie Goldstein Marcy Parker Lynne Turner Cindy Uptmore
Staff Appreciation Co-Chairs	Jennifer Carr Karon Jones



(L to R) Karon Jones and Jay Calloway provide Staff Appreciation Luncheon boxes to Mimi Drew, Kelly Lee and Chris Brendel



Parents' Association Co-Presidents
Christine Horstman and Annette
Matteson

Endowment Gifts

Legacy Gifts (\$1,000,000 & above)

Anonymous
Mr. & Mrs. Edward Heffernan
Joyce Pickering Endowed Fund

Platinum Gifts (\$500,000 - \$999,999)

Gold Gifts (\$250,000 - \$499,999)

Anonymous
2001-2002 Student Endowment Fee
Mr. & Mrs. Scott Sheffield
Mr. & Mrs. Ray Smerge
Mr. & Mrs. Jerry Stool

Silver Gifts (\$100,000 - \$249,999)

2002-2003 Student Endowment Fee
Anonymous
Mr. & Mrs. Crozier Brown
Mrs. Jane Browning
Mr. & Mrs. Thomas C. Carlson
Mr. & Mrs. Richard Cheatham
Mr. & Mrs. Hal Cook
Mr. & Mrs. Stewart Dawson
Mr. & Mrs. Danny Faulkner, Sr.
Mr. & Mrs. Forrest Hoglund
The Hoglund Foundation/
Kristy H. Robinson
Mitchell Energy Advisors
Mr. & Mrs. David Pace
The Jonathan Pace Foundation
Mr. & Mrs. Trevor Pearlman
The Aileen & Jack Pratt Foundation
Shelton Stampede Auction
Harold Simmons Foundation
Anne Q. & Brien P. Smith
Thomas E. Swift III & Laurys P. Swift
Mr. & Mrs. Andrew Teller
Richard & Mary Templeton Foundation

Bronze Gifts (\$50,000 - \$99,999)

Dr. & Mrs. Kenneth Altshuler
Anonymous
The Estate of Mrs. Mary Ashby
Mr. & Mrs. Kevin Boscamp
Mr. & Mrs. Bennett Glazer
Mr. & Mrs. Hunter Hunt
Mr. & Mrs. Paul Jarzemsky
Mr. & Mrs. Chris McAdam
Mrs. Susan McAdam-Weisman
Mr. & Mrs. Charlie McKinney
Mr. Alan Moore
Mr. & Mrs. John Penson
Mrs. Susan Schwartz
Mrs. Melinda Foster Sellers
Estate of Mr. Edward B. Summerhill
Mr. & Mrs. Gillis Thomas
Mr. & Mrs. William Ward
Mr. & Mrs. Gary Webb
Mr. & Mrs. Peter S. White

Copper Gifts (\$25,000 - \$49,999)

Anonymous
Mr. & Mrs. Paul Billings
Mr. & Mrs. Mark Carney
Mr. & Mrs. Steven Collis
Mr. & Mrs. David Farmer
Free Family Foundation
Mr. & Mrs. James Goodnight
Mr. & Mrs. Evan Griffiths
Mr. & Mrs. Owen Hannay
The Lightner Sams Foundation
Mr. & Mrs. Benton Markey
Mr. & Mrs. David F. Martineau
Mr. & Mrs. Trey Velvin
Mr. & Mrs. Mark Zale

Friends (All Gifts Below \$25,000)

Alliance Data
Anonymous
Mr. & Mrs. Todd Aaron
Mr. & Mrs. John F. Abernethy
Dr. Baer Ackerman
Mr. & Mrs. Matthew J. Adamczyk
Mrs. Mary M. Adams
Ms. Kay A. Allen
Mr. & Mrs. Michael Alexander
Alliance Data
Miss Claire Anderson
Ms. Jill Andres
Mrs. Ruth Andres
Mrs. Cynthia M. Angel
Anonymous
Mrs. Anna Armstrong
Mr. & Mrs. Jerry Baldridge
Mrs. Theresa Ball
Ms. Kathryn Bancroft
Bank of America
Mr. & Mrs. Mike Barry
Mr. & Mrs. Timothy M. Bates
Mr. & Mrs. William Bauer
Mr. & Mrs. Edwin Bell
Mr. & Mrs. James D. Berry
Ms. Evelyn Bettis

Ms. Barbara W. Biddle
Ms. Judith Birsh
Mr. & Mrs. Thomas E. Black, Jr.
Mr. & Mrs. William Blankenship
Mr. & Mrs. Clay Blankenship
Mrs. Marjorie Bliss
Mrs. Mary W. Bloom
Mr. & Mrs. Garrett Boone
Mr. & Mrs. Anthony F. Bouillion, Jr.
Mrs. Virginia J. Bowers
Briggs Freeman
Dr. James Brodsky &
Dr. Cynthia Schneider
Ms. Judy Browne
Mrs. Theresa Bruno
Ms. Jean Burgard
Mr. & Mrs. Dan Busbee
Mr. & Mrs. Bob Callan
Mr. & Mrs. Peter S. Carlsen
Mr. & Mrs. Thomas Carter
Mr. & Mrs. Michael Caruthers
Mr. & Mrs. John Chapman
Mr. Jerry Chapman
Dr. Cherie Clodfelter
Mr. & Mrs. Steven Cochran
Mrs. Nancy Coffman
Mr. & Mrs. Thomas G. Coleman
Mr. & Mrs. Brian Colwill
Mr. & Mrs. John C. Conger
Drs. Charles & Jeannine Cook
Mrs. Mary G. Cooley
Mrs. Marilyn R. Corrigan
Mr. & Mrs. Gene Cramm
Mr. & Mrs. John B. Cravens
Ms. Ruth Crowe
Ms. Carla Crutsinger/Brainworks
Mr. Winston Cutshall
Mr. David Daniels & Ms. Sherry Adair
Mr. & Mrs. Russell T. Davis
Mr. & Mrs. Ed DeBarba
Mr. & Mrs. Tom Delorenzi
Mr. & Mrs. David Demarest
Ms. Dana Dickson
Ms. Nancy J. Diebolt
Ms. Pam Difazio
Mr. & Mrs. Donald Dingwall
Mrs. Joan Dodd
Mr. & Mrs. J. Miles Dowd
Ms. Mary Dowis
Mr. & Mrs. Tommy Drew
Ms. Mimi Drew
Mrs. Lisa Dunn
Ms. Madeline Duva
Ms. Tomima Edmark
Mrs. Debbie Edwards
Ms. Lisa Ehrich
Mr. Linc Eldredge
Mr. & Mrs. Robert Ellis
Ms. Lili M. Feingold
The Howard Feldman Family
Mrs. Kathy Fester
Mrs. Patricia E. Finken
Mr. & Mrs. Sheldon Frankel
Mrs. Mitzi Freeman
Mr. & Mrs. Barry L. Friedman



Lauren Sanders is President for a Day at George W. Bush Presidential Library and Museum



Administrator Liz Willis greets Sam Clay with a hug

Mr. & Mrs. George J. Gavaletz
 Ms. Betty Glasheen
 Mrs. Patricia Godo
 Mr. & Mrs. Stacy Godo
 Dr. Steven Goldfine &
 Ms. Deborah Deitsch-Perez
 Mr. & Mrs. Robert Goldstein
 Mrs. Liz Gonzalez
 Mr. & Mrs. Wayne Goodwyn
 Mrs. Laura Gordon
 Mr. & Mrs. James H. Graass, Sr.
 Mrs. Lynne Green
 Mrs. Sue Green
 Greenhill School
 Mr. & Mrs. Evan Griffiths
 Ms. Marjorie B. Gunnell
 Mr. & Mrs. Karl Gutttag
 Mr. & Mrs. Carrol Hahn
 Mr. & Mrs. James Halperin
 Mr. & Mrs. Kevin Hanrahan
 Mr. & Mrs. Travis Heinrichs
 Mrs. Bonnie Helm
 Mrs. Anne Hendrick-Thomas
 Mr. & Mrs. Don Henley
 Dr. & Mrs. John Herrera
 Mrs. Judith Higgins
 Mr. & Mrs. James Hildenbrand
 Mrs. Carole Hill
 Mr. John Hodge
 Mrs. Jan Hover
 Mr. & Mrs. Kevin C. Howe
 Drs. Carroll & Linda Hughes
 Mr. & Mrs. Kenneth Hughes
 Ms. Joan Jackson
 Mr. Charles J. Jahant
 Mr. & Mrs. Benjamin Jared
 Mr. Alexander Jarzemsky
 Mr. John Jarzemsky
 JP Morgan Chase Foundation
 Mr. Keith Kehlbeck & Dr. Rhonda
 Kehlbeck
 Mr. Billy C. Kelly &
 Mrs. Jennifer Battle
 Mr. & Mrs. Rob Kelton
 Mrs. Cleve Knode
 Mr. & Mrs. Michael Kottwitz
 Dr. & Mrs. Michael R. LaValle
 Ms. Laetitia Lavie

Mr. & Mrs. William LeCorgne
 Mr. & Mrs. Craig Litman
 Mr. & Mrs. Benny W. Lucas
 T.C. Lupton, Jr. Family Foundation
 W.P. & Bulah Luse Foundation
 Mr. Bobby B. Lyle
 Dr. Maureen K. Martin
 Mr. & Mrs. Sanford Maslansky
 Sister Anne Rita Mauck
 Mrs. Nancy McCord
 Mr. & Mrs. T. C. McFearin
 The McGee Foundation
 Ms. Carol McGraw
 Ms. Marilyn D. McJimsey
 Mr. & Mrs. Carl W. McKee
 Mr. & Mrs. Charlie McKinney
 Ms. Lou McMillan
 Mr. Lester Melnick
 Mr. Ric Middlekauff
 Mr. & Mrs. Robert R. Miller
 Mr. & Mrs. Vance Miller
 Mr. & Mrs. James Mitchell
 Mr. & Mrs. J. Mark Moore
 Mr. & Mrs. Murray Munves
 Ms. Amber Murrell
 Ms. Doneita Myers
 Neiman Marcus
 Dr. & Mrs. Paul Neubach
 Mr. & Mrs. Walter Neustadt, Jr.
 Ms. Marjorie Nichols
 Mr. & Mrs. Harold Nix
 Mr. William David Noel
 Dr. & Mrs. Christopher Norton
 Mr. & Mrs. Mike P. Novotny
 Mr. Mark O'Brien
 Mr. & Mrs. Michael Ochstein
 Mrs. Michele O'Connell
 Mr. & Mrs. Jack Oxley
 The Peppard Foundation
 Lt. Col. & Mrs. Leon Perekslis
 Ms. Vicki Petersen
 Drs. Robert & Joyce Pickering
 Dr. Jeff Pierce
 Ramond & Harmony Pittet, Robinson A.
 & Caroline S. Pittet
 Mr. & Mrs. Randy Polka
 Prestonwood Christian Academy
 Mr. & Mrs. Martin L. Price
 Mrs. Ashley H. Priddy
 Mr. & Mrs. Randy Quay
 Mrs. Anna Ramey
 Mr. & Mrs. Ernest Randall
 Robbie & John A. Raphael
 Philanthropic Fund
 Mr. & Mrs. Joel Rath
 Mrs. Sherry P. Rauter
 Raytheon
 Mr. & Mrs. Lee Reaves
 Mr. & Mrs. Chef Rees
 Ms. Courtney Reisman
 Mr. & Mrs. Norman Reynolds
 Mr. & Mrs. Chris Richardson
 Dr. Sylvia O. Richardson
 Mr. & Mrs. Timothy Roach

Mrs. Lewis V. Roberts
 Mrs. Leslie Robinson
 Mr. & Mrs. Robert L. Robinson, IV
 Ms. Karen Rodman
 Mr. & Mrs. David Rodriguez
 The Rosewood Foundation
 Mrs. Maureen Royer
 Ms. Sally Bell Rutherford
 Dr. & Mrs. William Ryan III
 Mrs. Jessica D. Sanecz
 Dr. & Mrs. Gene Schanbaum
 Mrs. Judith Schlarb
 Dr. & Mrs. Joseph G. Schneider
 Shelton School
 Shelton/Alumni Association
 Shelton/Middle School Student Council
 Shelton/Senior Class Garage Sale
 Hon. Martha Shoffner
 Mr. & Mrs. Gary Silman
 Ms. Judith L. Skowron
 Mrs. Diann Slaton
 Dr. & Mrs. Charles Sloan
 Mr. & Mrs. J. Allen Smith
 Ms. Sue Brantley Smith
 Mr. John Solana
 Mr. & Mrs. Gary Stell
 Ms. Cynthia D. Stiger
 Mrs. Margareta Sudbrink
 Mr. & Mrs. Tom Sutherland
 Rev. Stephen Swann/Episcopal
 School of Dallas
 Mrs. Marilyn Taubman
 Ms. Audrey L. Taylor
 Mr. & Mrs. Richard Teza
 Mr. Whitey Thomas &
 Mrs. Anne Hendrick-Thomas
 Mr. Stephen Tigh
 Mr. & Mrs. Frank J. Tortoriello
 Mr. & Mrs. Junior Utech
 Mr. Roy Veldman
 Dr. & Mrs. Robert Viere
 Mr. & Mrs. Charles Vincent
 Ms. Marlena Warthan
 Mr. & Mrs. Ben R. Weber, Jr.
 Mr. & Mrs. Mark Westman
 Mr. Henry Wetter & Family
 Ms. Jeanne Whitman/The Hockaday
 School
 Ms. Eleanor J. Wiedie
 Mr. & Mrs. Peter N. Wiggins
 Mr. & Mrs. Keith M. Wilkins
 Dr. J.R. Williams &
 Mrs. Bobbie Sparks Williams
 Ms. Jordan Williams
 Ms. Julie Williamson & Mr. Ahmed Mokhtar
 Mr. & Mrs. Don Winspear
 Mr. & Mrs. John Wommack
 Mr. & Mrs. Bernard Wood
 Dr. Patricia Yarborough &
 Mr. John P. Burke
 Mr. & Mrs. Keith Young, Jr.
 Mr. & Mrs. David E. Zaenglein

Endowment Tribute Gifts

Endowment ensures that Shelton will be here for other graduates like these.



Senior Class of 2014



2014 Valedictorian Daniel Kussman
Attending University of Texas
McCombs School of Business



2014 Salutatorian Mikey Halperin
Attending University of Texas
McCombs School of Business

In Honor Of:

Glen Brown
Theresa Bruno
J.D. Gregson
Linda Kneese
Cam & Janessa Myers
Bob & Joyce Pickering
Suzanne Stell

In Memory Of:

Dee Hughes
Rada Maxwell
Harold R. Webb
Ronnie Lee Williams



The June Shelton Heritage Society

The June Shelton Heritage Society honors benefactors who have contributed \$50,000 or more to the needs of the school.

Dr. & Mrs. Kenneth Altshuler
Mr. & Mrs. Shy Anderson
Anonymous
The Mary C. Ashby Estate
Mr. & Mrs. F. William Barnett
Mr. & Mrs. Benny Barton
Dr. & Mrs. Ernest E. Beecherl
Mr. & Mrs. Edwin Bell
Mr. & Mrs. Paul Billings
Mr. & Mrs. James Boney
Mr. & Mrs. Kevin Boscamp
Mrs. Peggy Braecklein
The Brodsky Foundation
Mr. & Mrs. J. Crozier Brown
Mrs. Jane Browning
Mr. & Mrs. Thomas Carlson
Mr. & Mrs. Mark Carney
Mr. & Mrs. Royal Carson III
Mr. & Mrs. Richard Cheatham
The Chilton Foundation
Mrs. Lynda Peppard Collins
Mr. & Mrs. Don Conlon
The Constantin Foundation
Mr. & Mrs. Harold Cook
Mr. & Mrs. Hugh Corrigan
Mr. & Mrs. Stuart Cutshall
Mr. & Mrs. Stewart Dawson
Pamela H. & Joe M.
Dealey Foundation

Ms. Paula Dennard
The Discovery Foundation
Mr. & Mrs. Van Ellis
Mr. & Mrs. David N. Farmer
Mr. Danny Faulkner, Sr.
Mr. & Mrs. Charles Fioretti
Mr. & Mrs. Bennett Glazer
The Goddard Foundation
The Haggerty Foundation
Mr. & Mrs. James L. Halperin
Mr. & Mrs. Edward Heffernan
Mr. & Mrs. Jeffrey Heller
Mr. & Mrs. Don Henley
The Hillcrest Foundation
The Hoblitzelle Foundation
Mr. & Mrs. Forrest Hoglund
The Hoglund Foundation
Mr. & Mrs. Kevin Howe
Mr. & Mrs. Hunter Hunt
Mr. & Mrs. Paul Jarzemsky & Family
Mr. & Mrs. Jerry W. Jones
Gene & Jerry Jones Family Charity
Mr. & Mrs. Charles Josephs, Jr.
The Kincaid Foundation
Mr. & Mrs. Jerry King
The Carl B. & Florence E. King
Foundation
Ms. Laetitia Lavie
Mr. & Mrs. Robert Lavie
Mr. & Mrs. William Lenox
Mr. & Mrs. Larry Lightner
Lightner Sams Foundation

Mr. & Mrs. Benton Markey
Mr. & Mrs. David F. Martineau
Mr. & Mrs. Christopher McAdam
Mrs. Susan McAdam-Weisman
The McGee Foundation
The Meadows Foundation
Mr. & Mrs. Ric Middlekauf
Ms. Denese Mills
Mr. Michael Mitchell
Mr. Alan Moore
Mr. Mike Mullen
Mrs. Walter Neustadt
Mr. & Mrs. Harold Nix
Mr. & Mrs. David A. Pace
Jonathan Pace Foundation
Mr. & Mrs. Dennis Parravano
Mr. & Mrs. Trevor Pearlman
Mr. & Mrs. John Penson
The Peppard Foundation
Drs. Robert & Joyce Pickering
Mr. & Mrs. Lonnie Pilgrim
Mr. & Mrs. Jack E. Pratt, Sr.
The Aileen & Jack Pratt
Foundation
Mr. & Mrs. Howard Rachofsky
Mrs. Lynne Mohamed Raouf
Mr. & Mrs. William Rapier
Mr. & Mrs. Brad Reeves
Ms. Kristy Robinson
The Rupe Foundation
Dr. & Mrs. William Ryan III
Mr. & Mrs. Rodger Sanders

Ms. Susan Schwartz
Ms. Melinda Sellers
The Sharp Foundation
Mr. & Mrs. Scott Sheffield
Mr. & Mrs. Anthony Sherman
The Harold Simmons Foundation
Mr. & Mrs. Raymond Smerge
Mr. & Mrs. Brien Smith
Mr. & Mrs. Emmitt Smith
The Sparrow Foundation
Mr. & Mrs. Gerald Stool
The Edward B. Summerhill Estate
The Louis T. Swift Foundation
Mr. & Mrs. Thomas Swift III
Mr. & Mrs. Andrew Teller
The Richard & Mary Templeton
Foundation
Mrs. Billie Thomas
Mr. & Mrs. Myron E. Ullman
Wal-Dot Foundation
Mr. & Mrs. William Ward
Mr. & Mrs. Gary Webb
Mr. & Mrs. Peter S. White
Mr. & Mrs. Peter Wiggins
Mr. & Mrs. Phillip Wiggins
Mr. & Mrs. Zolon Wilkins
The George & Fay Young
Foundation
The William & Sylvia Zale
Foundation

And members who wish to remain anonymous

Delphi Society



Delphi is a small town in the mountains of Greece where the famous oracle of Apollo supposedly took place, announcing the future. It is a symbol for seeking to know & shape the future.

To honor those individuals who seek to shape the future of Shelton School, the Delphi Society was established in 2003. The Society recognizes & thanks alumni & friends of Shelton who have created provisions in their wills or estate plans to benefit Shelton School.

Mrs. Cindy Angel
Estate of Mrs. Mary Ashby*
Mrs. Kaye Aylesworth
Mrs. Theresa Ball
Mr. and Mrs. Edwin Bell
Mr. Jerry Chapman
Mr. and Mrs. David Farmer
Mr. Andrew Frankel and Ms. Janell Eilers
Mr. and Mrs. Kenneth Hughes

Mr. and Mrs. David Martineau, Sr.
Mr. Ric Middlekauf
Drs. Bob and Joyce Pickering
Ms. Karen Rodman*
Dr. and Mrs. William Ryan
Estate of Mr. Edward B. Summerhill*
Mr. and Mrs. William Ward

* Deceased

Annual Fund 2013-2014 Now Is the Time

Annual Fund Leadership

Co-Chairs: **Laura & G. Ellison Hurt & Lucy & Don Witte**

Executive Director's Society

\$20,000 & Above

Anonymous
Mr. & Mrs. Jeffrey Heller

Leadership Council

\$10,000 - \$19,999

Mr. & Mrs. Shy Anderson
Anonymous
Mr. Ted Casey &
Ms. Angela Wommack
Mr. & Mrs. Tommy Gilbreath, Jr.
Ms. Heather Graham
Mr. & Mrs. James L. Halperin
Mr. & Mrs. Don Henley
Mr. & Mrs. G. Ellison Hurt, III
Mr. & Mrs. Jerry W. Jones
Mr. Alan Moore
Mr. & Mrs. John Vandercook

Founders' Circle

\$5,000 - \$9,999

Anonymous
Mr. & Mrs. Clay Cash
Communities Foundation of Texas
Mr. & Mrs. Ben Crosland
Mr. & Mrs. William A. Custard
Mr. & Mrs. Stuart Cutshall
Free Family Foundation
Mr. Jay Grob
Mr. & Mrs. Travis G. Heinrichs
Mr. & Mrs. David T. Helffrich, Jr.
The Hogle Foundation
Ms. Kate Juett
Mr. Michael Mitchell
Mr. & Mrs. Timothy Perry
Mr. & Mrs. Randy Polka
Mr. & Mrs. John L. Roach
Ms. Kristy Robinson
Mr. & Mrs. Rick Rogers

The Rosewood Foundation
Sapphire Foundation
Dr. Scott Stone
Mr. James Vasilas &
Mr. Charles Marlett
Mr. & Mrs. Phillip Wiggins

Directors' Club

\$3,000 - \$4,999

Mr. & Mrs. William Adkins
Anonymous
Mr. & Mrs. David Armour
Mr. & Mrs. Corey Bailey
Mr. & Mrs. Charles G. Dannis
Mr. & Mrs. Benny Duncan
Mr. & Mrs. Randall Ebner
Dr. & Mrs. Esmail Elwazir
Mr. & Mrs. Charles Josephs, Jr.
Mr. Taylor Mitchell &
Mrs. Jan Leeds
Mr. John Newby &
Mrs. Maria Karos
Mr. & Mrs. Ketan Patel
Mr. & Mrs. John Wrather

Gold Charger Club

\$1,000 - \$2,999

Mr. & Mrs. Sami Abbasi
Mr. & Mrs. Michael Androvett
Anonymous
Mr. Max Antich &
Dr. Pingying Wang
Dr. & Mrs. Roy Ashton
Mr. & Mrs. Sterling C. Bain, Jr.
Mr. Gary Baird, Jr.
Mr. & Mrs. James Baker, III
Mr. & Mrs. C. William Balthrope
Mr. & Mrs. William Balthrope
Mr. & Mrs. Leon Banowetz
Mrs. Sherry Bartholow
Dr. & Mrs. Ernest E. Beecherl
Mr. & Mrs. Edwin Bell
Mr. Scott Birnbaum
Mr. & Mrs. Steve Blackwell
Mr. Gary Bolton & Ms. Elena Katok
Mr. & Mrs. Jeffrey Bragalone
Mr. & Mrs. Todd Bratton
Mr. & Mrs. Paul Bret
Mr. & Mrs. J. Crozier Brown
Mr. & Mrs. Barry Burns
Mr. & Mrs. James C. Campbell
Mr. John R. Carmichael, III
Mr. & Mrs. Mark Carney
Mr. & Mrs. John J. Carrier
Guilomet
Castle Hills School Foundation, Inc.
Ms. Ruth Secker Chambers
Ms. Jennifer Clendening

Mr. Bill Cole
Mr. & Mrs. Jim Collet
Mr. & Mrs. Jeff Cosby
Mr. John Cracken
Mr. & Mrs. James D'Ambrosio
Mr. & Mrs. James M. Darden
Mr. & Mrs. Michael Dardick
Ms. Nancy Diebolt
Mr. & Mrs. B. Todd Dillard
Mr. & Mrs. Richard Dix
Mr. Harold Dunk
Ms. Tomima L. Edmark
Dr. & Mrs. Bryan Elvebak
Ericsson
Mrs. Sandra Erwin
Mr. & Mrs. Bill Esping
ExxonMobil
Mr. & Mrs. Jesse Ferrer
Mr. & Mrs. Jerry E. Fischer
Mrs. Mary Fox
Ms. Jennifer Frank
Mr. & Mrs. Christopher Geymuller
Mr. Jeffrey Giese
Mr. & Mrs. Mark Giles
Mr. Paul Godwin
Mr. & Mrs. Jacob Goetz
Mr. & Mrs. William R. Graham
Mr. Richard Gussoni &
Ms. Lucy Gussoni
Mr. Howard Hallam
Mr. & Mrs. Owen Hannay
Mr. & Mrs. Dean Harvey
Mr. Robert Haspel &
Mrs. Lynda Taylor
Mrs. Shirley Haspel
Mrs. Jeanette Henderson
Mr. & Mrs. Matthew Hickey
Ms. Martha Hinojosa-Nadler
Mr. & Mrs. Forrest Hogle
Dr. & Mrs. Andy & Callie Hollenshead
Mr. & Mrs. Carl H. Holliday
Mr. Ray Hutchison &
Sen. Kay Bailey Hutchison
Mr. & Mrs. Paul Jarzemyk
Mr. & Mrs. Michael Kane
Mr. Jeffry Kaplan & Mrs. Lisa Newman
Mr. & Mrs. Ray Kembel
Mr. Gary Kennedy &
Ms. Michele Valdez
Mr. & Mrs. Darren Kozelsky
Mr. & Mrs. Blake Kresl
Mr. Paul Lackey
Mr. & Mrs. Adam Lampert
Mr. Steven Lawrence
Mr. & Mrs. Lester Levy, Jr.
Mr. & Mrs. Bruce Lewis
Mr. & Mrs. Marc Lipshy
Mr. & Mrs. Kenneth W. Luce
Mr. & Mrs. David F. Martineau

Mr. & Mrs. Ira Matsil
Mr. & Mrs. Mark Matteson
Dr. & Mrs. Joseph W. McNutt
Mr. & Mrs. A.P. Merritt
Mr. & Mrs. Robert Mills
Ms. Martha Moore
Mr. & Mrs. Christopher Myers
Dr. & Mrs. Paul Neubach
Mr. & Mrs. Kenneth Niederer
Mr. & Mrs. Max Orth
Mr. & Mrs. David A. Pace
Mr. John G. Penson
Mr. & Mrs. Arnold E. Petsche
Drs. Robert & Joyce Pickering
Mr. & Mrs. Alfonso Pino
Mr. & Mrs. Bart Plaskoff
Ms. Sabrina Polley
Mrs. Carrie Postolos
Mr. & Mrs. Merlin Preheim
Mr. & Mrs. Timothy L. Pullen
Mr. & Mrs. David Ralston
Ms. Glynn Razor
Mr. & Mrs. Brad Reeves
Mr. & Mrs. Kelly Roach
Mr. & Mrs. Mark Robbins
Mr. & Mrs. Leonard Roberts
Mr. & Mrs. Doug Robison
Ms. Shelly Rosenberg
Mr. & Mrs. Carl Rubin
Dr. & Mrs. William Ryan, III
Mr. & Mrs. Naishadh Saraiya
Mr. & Mrs. Nick Schaeffer
Mr. & Mrs. David Schrader
Ms. Susan Schwartz
Mr. & Mrs. Michael Serber
Mr. & Mrs. Scott Sheffield
Mr. & Mrs. Tom Shelton
Mr. & Mrs. Matthew Simons
Mr. & Mrs. Rick Slaven
Dr. & Mrs. Louis Sloan
Dr. & Mrs. Gregg Small
Mr. & Mrs. Raymond Smerge
Mr. & Mrs. Emmitt J. Smith, III
Mr. & Mrs. Kirby Smith
Dr. & Mrs. Tommy Spain
Mr. Kenny Steinhart
Mr. & Mrs. Ron Steinhart
Mrs. Suzanne Stell
Mr. Andrew Stevens
Ms. Robyn Stevens
Mr. & Mrs. Joe Stone
Mr. & Mrs. Philip Taken
Mr. & Mrs. Dennis Thomas
Mr. & Mrs. Chris H. Tomasides
Dr. & Mrs. Fernando Torres
Dr. & Mrs. Jeffrey C. Toubin
Mr. & Mrs. Paul Trepagnier
Mr. & Mrs. Trey Velvin
Mr. & Mrs. Anthony Vitullo
Dr. & Mrs. William Weaver



(L to R) Ellison and Laura Hurt; Lucy and Don Witte

Mr. & Mrs. Gary Webb
 Dr. & Mrs. Robert Westerberg
 Mr. & Mrs. Cory Whitaker
 Mr. & Mrs. Peter S. White
 Mr. & Mrs. Donald Wills
 Ms. Kolleen Wilwerding
 Mr. & Mrs. Robert Winckler
 Mr. & Mrs. Don Witte
 Mr. & Mrs. William Zaemes

Partners' Club

\$1 - \$999

Mrs. Marilyn Aaron
 Mr. & Mrs. Abid Abedi
 Drs. Chris & Shawn Abel
 Mr. & Mrs. Greg Adair
 Mr. & Mrs. Garrett Adams
 Ms. Maggie Adams
 Ms. Marcia Waldrop Adams
 Mr. & Mrs. William Adkison
 Mr. & Mrs. Paul Aidala
 Mr. & Mrs. Enis Akgerman
 Mr. & Mrs. Harry Albert
 Ms. Jill Alessandra
 Mrs. Trish Alessio
 Mr. & Mrs. Michael Alexander
 Mr. & Mrs. Jerry Allen
 Ameriprise Financial
 Mrs. Lori Anderson
 Mr. & Mrs. Travis Anderson
 Anonymous
 Anonymous
 Mr. & Mrs. Peter Antich
 Mr. & Mrs. Phillip Applebaum
 Mr. & Mrs. Marc Armentrout
 Mrs. Betsy Armour
 Mrs. Anna Armstrong
 Mr. & Mrs. Jaime Aron
 Mr. & Mrs. Gordon Asher
 Mr. & Mrs. Bill Austin
 Mr. & Mrs. Benjamin Bain
 Ms. Kathryn Baird
 Ms. Peggy Baird
 Mr. & Mrs. Kenneth Baker
 Ms. Sandy Balis
 Ms. Meghan Ball
 Mrs. Theresa M. Ball
 Ms. Taylor Bank
 Bank of America
 Dr. & Mrs. David Banks
 Mr. & Mrs. Lynn Banks
 Mr. & Mrs. Philip Banks
 Mr. & Mrs. Dan Barbara
 Mr. & Mrs. William Barkley
 Mr. & Mrs. C. Jay Barlow
 Ms. Casey L. Barnett
 Ms. Liz Barnett
 Mrs. Mellany Barnett
 Dr. & Mrs. Lionel Barraza
 Mrs. Judy Barrett
 Mr. Brent Barry & Ms. Susan Cox
 Mr. & Mrs. Richard Bass
 Mr. & Mrs. Michael J. Bauer

Dr. & Mrs. Jay M. Beck
 Mr. & Mrs. Casey Becker
 Ms. Christine Bedenbaugh
 Mr. Masoud Beheshti &
 Mrs. Theresa Byrne
 Dr. Earl D. Bellamy
 Ms. Tamara Bennett
 Mr. Earle Bensing
 Ms. Carolyn Bentley
 Ms. Melanie Bentley
 Ms. Laura Berend
 Mr. & Mrs. Caesar Bernal
 Mr. & Mrs. Nathan Bernbaum
 Mr. & Mrs. Kent Bertino
 Dr. Alfred Bessell III
 Mr. & Mrs. Keith Bessell
 Mr. & Mrs. Jeremy Besser
 Dr. & Mrs. Michael J. Biavati
 Ms. Kimberly Bice
 Ms. Penny Bigbie
 Mr. & Mrs. Thomas Billings
 Mr. & Mrs. John Birkhoff
 Mr. Jerry Bishop
 Mr. & Mrs. John Bitzer
 Ms. Brenda Black
 Ms. Billye Blackwell
 Mr. & Mrs. Bert Blair
 Mr. & Mrs. William Blankenship
 Mr. & Mrs. Ron Bliss
 Mr. & Mrs. Robert J. Bluhm
 Ms. Cynthia Boggs
 Ms. Locie Boggs
 Mr. & Mrs. Russell Bolton
 Ms. Irene Bond
 Mr. & Mrs. Benedetto Bongiorno
 Mr. & Mrs. Damon Borders
 Mr. & Mrs. Kevin Boscamp
 Mr. & Mrs. Donald Botens
 Mr. & Mrs. Robert Botens
 Ms. Virginia J. Bowers
 Dr. & Mrs. Brad Bowman
 Mr. & Mrs. Roger C. Bowman
 Mr. & Mrs. Luis Boy
 Mr. & Mrs. David Boyce
 Mr. & Mrs. Lee Boyle
 Dr. & Mrs. Waldo Bracy
 Mrs. Huda Bragalone
 Mr. & Mrs. Kevin Brand
 Mr. & Mrs. Stuart Brand
 Dr. & Mrs. Aaron Bransky
 Mrs. Patricia J. Breen
 Mr. Chris Brendel
 Ms. Carol Brock
 Dr. Elisabeth Brockie
 Mrs. Pam Brockway
 Mr. & Mrs. Gregory Brooke
 Mrs. Carole Brotman
 Ms. Mary Ann Broussard
 Mr. Glen Brown
 Mr. & Mrs. Chris Brown
 Mr. & Mrs. Douglas Brown
 Mr. & Mrs. Fred D. Brown
 Ms. Judy Browne

Ms. Sarah Broz
 Mrs. Theresa Bruno
 Mr. & Mrs. John Brusniak
 Mr. & Mrs. William H. Bulmer
 Mr. & Mrs. Douglas Bunnell
 Mr. Keith Buresh &
 Mrs. Laurel Hoitsma
 Mr. & Mrs. Robert F. Buresh
 Ms. Kaye Burkhardt
 Mr. Virgil Burkhardt
 Dr. & Mrs. Robert Burns
 Mr. & Mrs. Tim Burroughs
 Mr. Clifford Burton
 Mr. & Mrs. Dan Busbee
 Mrs. Sherryl Bussell
 Mr. & Mrs. Charles Byars
 Mr. & Mrs. Lloyd A. Byerhof
 Mr. & Mrs. D. Harold Byrd, III
 Mr. & Mrs. Reid Caldwell
 Dr. & Mrs. John Calhoun
 Mr. & Mrs. Bill Camp
 Mr. & Mrs. Frank Campise, Jr.
 Ms. Nicole Canales
 Mrs. Sue Cantrell
 Mr. & Mrs. Chris Capriotti
 Mr. & Mrs. Dominick P. Capriotti
 Mr. Jim Cargile & Dr. Sue Francis
 Mr. Patrick Cargo &
 Mrs. Jonna Barta
 Mrs. Meg Carlsen
 Mr. & Mrs. Scott Carr
 Mr. & Mrs. Jonathan Carrier
 Mrs. Joyce Carroll
 Ms. Greta Carter
 Mr. & Mrs. Travis Carter
 Ms. Leslie Cashdollar
 Mrs. Katherine Cashon
 Ms. Tris Casillas
 Mr. & Mrs. Tony Cecil
 Mr. & Mrs. Dennis Cenzalli
 Mr. & Mrs. James Chambers
 Mr. & Mrs. Robert Champney
 Mr. & Mrs. Steven Chapman
 Mr. & Mrs. William Chilton
 Cisco
 Mr. & Mrs. Fred H. Clairmont
 Mr. & Mrs. Billy Clark
 Mr. Will Clarke &
 Ms. Michelle Witcher
 Mr. & Mrs. Chester Claudon
 Mr. & Mrs. Gary Clay
 Mr. & Mrs. Tim Clay
 Mr. & Mrs. Joe Cleveland
 Dr. & Mrs. Joseph J. Clifford
 Dr. Chris Clore
 Mrs. Judy Clymer
 Mr. & Mrs. Ty Cobb
 Ms. Lindsay Cobert
 Mrs. Nancy Coffman
 Mr. & Mrs. Ken Coggins
 Mr. & Mrs. Scott Cohen
 Mr. & Mrs. Daniel M. Cohn
 Mr. & Mrs. Martin Cohn



Mr. Chris Cole &
 Mrs. Laurie Sprouse
 Mr. & Mrs. Michael Cole
 Mr. & Mrs. David Coleman
 Mr. Craig Collins
 Ms. Rebecca Collins
 Ms. Susan Collins
 Mr. & Mrs. Brian Colwill
 Ms. Mary Connolly
 Drs. Charles & Jeannine Cook
 Mr. Jack B. Cook
 Mrs. Marty Cooley
 Mr. & Mrs. Paul Coon
 Mr. & Mrs. Marshall Cooper
 Mr. & Mrs. Delbert Cordum
 Mr. & Mrs. Jack Corman
 Ms. Jennifer Counce
 Mr. & Mrs. Gene Cramm
 Ms. Suzanne Crawford
 Mr. & Mrs. Lee Crisler
 Mr. Carter Crow
 Mr. Trammell Crow
 Mrs. Stephanie Crowe
 Mrs. Margaret Crump
 Mr. & Mrs. Patrick Crump
 Ms. Krystal Cunningham
 Ms. Cameron Custer
 Mr. & Mrs. Patrick M. Custer
 Mr. Winston Cutshall
 Mr. & Mrs. Tom Dailey
 Dr. & Mrs. Kenneth Dauber
 Mr. & Mrs. William Daves, IV
 Dr. & Mrs. Malcolm D. Davidson
 Mrs. Carolyn E. Davis
 Ms. Christine Davis
 Mr. & Mrs. David Davis
 Ms. Jennifer Davis
 Dr. & Mrs. Steve Davis
 Mr. & Mrs. Chris Dawe
 Ms. Virginia Dawe
 Mr. & Mrs. J. Stewart Dawson
 Mr. & Mrs. Armando De Diego
 Mr. & Mrs. Alejandro De La Cerda
 Mrs. Evie Debic
 Mrs. Wendy Deppe
 Dr. & Mrs. Michael Desaloms
 Mr. & Mrs. Raymond DeTullio
 Mr. & Mrs. Allan DeWitt
 Mr. & Mrs. Steven DeWolf
 Mr. & Mrs. Doug Diebolt
 Mr. & Mrs. Larry Dix
 Mrs. Mandy Dockweiler

Annual Fund 2013-2014 Continued



Brittany and Joy Baca at senior luncheon

Ms. Katherine Doctor-Troup
 Mrs. Joan Dodd
 Ms. Natalie Dodge
 Mr. Thomas F. Dodge
 Mr. & Mrs. Dahlem Dodson
 Ms. LuAnn R. Dolly
 Mr. & Mrs. Brian Donohoe
 Mr. William R. Dorward
 Mr. Adam Dougherty
 Dr. & Mrs. Shelby Douglas
 Dr. & Mrs. Daniel Dow
 Mr. & Mrs. Michael Dorn
 Ms. Jennifer Drake
 Dr. & Mrs. Christopher Dreiling
 Ms. Mimi Drew
 Ms. Mary Dryden
 Mr. & Mrs. David Duan
 Mrs. Claire Duesing
 Ms. Danyle Duke
 Mrs. Jenny Duncan
 Ms. Karen DuPape
 Mr. & Mrs. Robert Dutton
 Mr. & Mrs. Joe Dwyer
 Mr. & Mrs. Ben Dyess
 Mr. & Mrs. Todd Eaddy
 Mr. & Mrs. Joel Eastman
 Mr. & Mrs. Eddie Eckart
 Mr. & Mrs. Gerald Eckart
 Mr. & Mrs. Joseph Eckert
 Mr. & Mrs. Arthur E. Edwards
 Dr. & Mrs. Paul Eggert
 Mr. & Mrs. Mark Ehrenreich
 Dr. & Mrs. Jack Ehrhardt
 Mr. & Mrs. Bernard Eisenstat
 Mr. Brian Ellard
 Mr. & Mrs. Jeff Epstein
 Mr. & Mrs. Joe Evangelist
 Mr. Mark Evangelist
 Ms. Libby Evans
 Mr. & Mrs. Marty Evans
 ExxonMobil Corporation
 Mr. & Mrs. Brian Farlow
 Mr. Gregory Farnsworth
 Mr. & Mrs. Todd Fecht
 Mr. & Mrs. Ernest Feldgus

Mr. & Mrs. Rossi W. Felix
 Mr. & Mrs. Hunter Ferguson
 Mr. & Mrs. Christopher Finetto
 Mr. & Mrs. Edwin Fisher
 Mr. & Mrs. Mark Fisher
 Ms. Becky Fleming
 Mr. & Mrs. Bradley Fleming
 Dr. Susan Fleming
 Mr. David Fletcher
 Mr. & Mrs. Terry Flowers
 Mr. Mitchell Fonberg
 Mr. & Mrs. Rob Francis
 Mr. & Mrs. Jeff Frank
 Mr. & Mrs. Sheldon Frankel
 Mr. & Mrs. Karl Frankl
 Mr. Richard S. Frankl
 Ms. Shelley Frankl
 Mrs. Barbara Franklin
 Ms. Jill Free
 Mrs. Mitzi Freeman
 Drs. Hugo & Anita Freudenthal
 Mr. & Mrs. Richard Freudenthal
 Ms. Laurie Frey
 Mr. & Mrs. William Froelich
 Coleen Frost Real Estate Team
 Ms. Sally Fryer
 Fujitsu
 Mr. & Mrs. Ken Gabelmann
 Ms. Amy K. Gallacher
 Mr. Charles Gallacher
 Ms. Patricia Gallaher
 Mr. & Mrs. Daniel Galway
 Dr. Chris Gancarz
 Mr. & Mrs. Jesse Garza
 Mr. Drue Gawel
 Mr. & Mrs. Eli Gershenson
 Dr. Fred Ghali &
 Dr. Tessa Anderson
 Mr. & Mrs. Gary Gifford
 Ms. Mary Gilbert
 Ms. Cathie Gilmore
 Ms. Becky Ginn
 Mr. & Mrs. Sam Gioldasis
 Ms. Madeleine Giroir
 Ms. Betty Glasheen

Mr. & Mrs. Brett Glass
 Mr. & Mrs. Harold Gold
 Ms. Barbara Golden
 Mr. Christopher Golden
 Dr. Steven Goldfine & Mrs.
 Deborah Deitsch-Perez
 Mr. & Mrs. Robert P. Goldman
 Ms. Wanda Goldsby
 Mr. & Mrs. David W. Goldstein
 Ms. Sara Golieb
 Mrs. Liz Gonzalez
 Ms. Donna Gonzalez
 Mr. Wade Goodwyn &
 Dr. Sharon Sandell
 Mr. & Mrs. Aaron Gordon
 Mr. & Mrs. J. Scott Gordon
 Mr. & Mrs. Will Gordon
 Mr. & Mrs. James H. Graass, Sr.
 Ms. Christine Graf
 Mr. & Mrs. Guy Grant
 Ms. Kal Grant
 Mrs. Tina Graves
 Mr. Robert Gray &
 Ms. Elizabeth Ann Schrupp
 Judge & Mrs. George R. Greene
 Mr. & Mrs. J. Shannon Gregson
 Mr. & Mrs. Evan Griffiths
 Mr. & Mrs. Steve R. Grimmer
 Mrs. Mary Ann Grippio
 Mr. Robert Grossman &
 Mrs. Elise Back
 Mr. & Mrs. Karl Gutttag
 Mr. & Mrs. David Haber
 Dr. & Mrs. Michael Hahsler
 Ms. Kelly Hall
 Mr. & Mrs. Brian Halliburton
 Mr. & Mrs. Keith Halliburton
 Dr. Ethan Halm &
 Ms. Diana Sheehan
 Mr. & Mrs. James Halpin
 Mr. & Mrs. David Hamer
 Mr. & Mrs. David Hamilton
 Mrs. Becky Hampson
 Mrs. Janis Hanes
 Mr. Daniel Hanson
 Mrs. Lynda Hardeman
 Dr. & Mrs. John P. Harley
 Ms. Jane R. Harley
 Mr. & Mrs. Byron Harrell
 Dr. & Mrs. Erik Harrington
 Mrs. Joni Harris
 Mr. & Mrs. Bob D. Harrison
 Ms. Melissa Harrison
 Ms. Sonja Hayes
 Ms. Claudia Hays
 Mr. & Mrs. Chris Heavner
 Ms. Sarah Helffrich
 Mrs. Bonnie Helm
 Mr. & Mrs. Bruce Henderson
 Ms. Katy Henderson
 Mrs. Anne Hendrick-Thomas
 Mr. & Mrs. Jeb Hensarling
 Mr. & Mrs. J. Patrick Heptig

Ms. Debbie Herskovitz
 Mr. & Mrs. Monty Herson
 Mrs. Anne Hester
 Mrs. Stephanie Hicks
 Mr. & Mrs. Mark Higgins
 Mr. & Mrs. James Hildenbrand
 Ms. Laura K. Hill
 Mr. & Mrs. Robert Hinds
 Mrs. Peggy Hinds-Baker
 Mrs. Ada Hinkle
 Ms. Sarah Hinojosa
 Mr. & Mrs. Leonard Hirsch
 Mr. John Hodges
 Mr. & Mrs. Carlos Hoefken
 Ms. Lauri Hoffman
 Mr. & Mrs. Dennis Hogan
 Ms. Rose Anne Holman
 Mr. & Mrs. Michael Holmes
 Mr. John Fox Holt III
 Dr. & Mrs. Rick Hostin
 Ms. Sherry Houpt
 Mr. & Mrs. Frank Houseman
 Mr. & Mrs. J. T. Housewright
 Mr. Clay Houston
 Mr. & Mrs. Chuck Howley
 Mr. & Mrs. Scott Howley
 Ms. Jean Huddleston
 Mr. & Mrs. John Hudson
 Ms. Anne Hughes
 Dr. & Mrs. Carroll Hughes
 Mrs. Caroline Hunt
 Mr. David A. Hunt
 Mr. & Mrs. Todd M. Hunt
 Mr. & Mrs. Roger Hutton
 Mr. & Mrs. Ted Ingersoll
 Mr. & Mrs. Mike Isett
 Ms. Angela Jablonski
 Mr. & Mrs. Michael C. Jackson
 Mrs. Betty James
 Mr. & Mrs. Craig N. Janssen
 Ms. Gwen Jensen
 Ms. Georgiana Jinks
 Ms. Lori Johnson
 Mr. & Mrs. Marvin Johnson
 Mr. & Mrs. Randy G. Johnson
 Ms. Sammie Johnston
 Mr. & Mrs. Barry Jones
 Mr. & Mrs. Eric Jones
 Dr. Sara Jones
 Mr. & Mrs. Scott O. Jones
 Mr. & Mrs. Thomas Jones
 Mr. & Mrs. Jim Judge
 Mr. & Mrs. Jon Jurgovan
 Mr. & Mrs. Dan Kahle
 Mr. & Mrs. Joshua A. Kahn
 Dr. & Mrs. John Kampine
 Mr. & Mrs. Michael P. Kaplan
 Ms. Karen Kaplan
 Mr. & Mrs. Barry Karesh
 Mrs. Marsha Kaspareit
 Dr. Beth Kassanoff
 Mr. Greg Kassanoff
 Ms. Christina Kasten

Ms. Barbara Katz
 Mr. Robert Kaufman
 Mr. & Mrs. Timothy Keen
 Mr. & Mrs. Tim Kelley
 Ms. Brenda Kelly
 Mr. & Mrs. Rob Kelton
 Mr. & Mrs. Clayton C. Kennedy
 Dr. James Kennedy, Jr.
 Mr. & Mrs. James Kennedy
 Mr. & Mrs. Richard Key
 Ms. Pamela Thrun Kinsell
 Mr. & Mrs. Eric Kline
 Ms. Linda Kneese
 Mr. Christopher Knowles
 Mr. & Mrs. Gordon Koblitiz
 Mr. & Mrs. Christopher Korman
 Dr. & Mrs. Jaryl Korpinen
 Mrs. Enid Kripke
 Ms. Wendy Krispin &
 Ms. Penny Krispin
 Mr. Jan Kruger
 Ms. Amy Krumholz
 Ms. Susan J. Kuddes
 Mr. & Mrs. Robert Kuhnert
 Mr. Robert Kunovich &
 Dr. Sheri Kunovich
 Mr. & Mrs. Ihor Kupchynsky
 Mr. Zachary S. Ladd
 Ms. Jean E. Lange
 Mr. & Mrs. Donald Langlais
 Mrs. Tina Larson
 Mr. Bill Lau
 Ms. Virginia Lauderdale
 Mr. Alan Lawrence &
 Mrs. Marbella Hernandez
 Mr. & Mrs. Randall Laza
 Mr. Music Learning
 Ms. Charlotte Lee
 Ms. Kelly Lee
 Mr. & Mrs. Jere Lehtinen
 Mr. Zilei Leite
 Mr. Brian Lemery & Dr. Elyse
 Lemery
 Mr. & Mrs. Julian Levin
 Ms. Rita Levin
 Mr. & Mrs. John I. Levy
 Ms. Christy Lincoln
 Mr. & Mrs. Tony Liscio
 Mr. Daniel P. Little &
 Ms. Elizabeth Bobo Little
 Mr. & Mrs. Harry Littrell
 Drs. Nelson & Christy Littrell
 Ms. Susie Littrell
 Mr. & Mrs. Chris Livingston
 Mr. & Mrs. Chris Lloyd
 Mr. Chuck Locke
 Mr. & Mrs. Frederick London
 Ms. Brynn Long
 Dr. & Mrs. Jorge Lopez
 Dr. & Mrs. James Lowell
 Mrs. Cathy Luby
 Mr. & Mrs. Benny Lucas
 Ms. Gwen Luedtke

Mr. & Mrs. David Lurie
 Mr. & Mrs. Jeff Lurie
 Mr. & Mrs. Brian Mack
 Mr. & Mrs. John Madden
 Mr. & Mrs. David E. Maddux
 Mrs. Linda Madon
 Ms. Patsy Mahfouz
 Mr. & Mrs. Paul Mainer
 Mr. & Mrs. Joseph Malvezzi
 Dr. & Mrs. J. Fernando Mandujano
 Mr. & Mrs. Brian Mantzey
 Mr. & Mrs. Randall Marchant
 Dr. & Mrs. Jason Marchetti
 Mr. & Mrs. Benton Markey
 Mr. & Mrs. Mark Marshall
 Mrs. Joy Martello
 Mrs. Vella Jo Martin
 Mr. & Mrs. Charles Martin
 Mrs. Kathy Martin
 Mr. & Mrs. John Martinez
 Mr. Ronnie Masters &
 Ms. Genie Howard
 Mr. & Mrs. Andrew Mathews
 Mr. & Mrs. James Mathis
 Mr. & Mrs. Kevin Mattison
 Mr. & Mrs. Michael Mauceli
 Mr. & Mrs. Kennethh Mayer
 Mr. & Mrs. Shawn McBride
 Mrs. Debbie McCabe
 Ms. Stephanie McCain
 Ms. Jennie McCament
 Mr. & Mrs. Robert McCamey, Jr.
 Ms. Nancy McCann
 Ms. Nancy McCord
 Mr. & Mrs. Charles McCormack
 Ms. Aundria McCullar
 Mr. & Mrs. Bobby McCulloch
 Mr. & Mrs. Kevin McDermott
 Mrs. Sharon McEachern
 Mr. & Mrs. Jon McGarity
 Mr. & Mrs. James McGoldrick
 Mr. & Mrs. Mark McKenzie
 Mr. William McKenzie & Mrs.
 Jennifer Nagorda
 Mr. & Mrs. Don McKenzie
 Ms. Norma McKern
 Mr. & Mrs. Gordon McLeod
 Mr. & Mrs. Mason McNairy
 Mr. & Mrs. Tim McSorley
 Mr. & Mrs. Rajnikant Mehta
 Ms. Liz Meiteen
 Mr. & Mrs. Stephen Meloncon
 Mr. & Mrs. John D. Melton
 Mr. & Mrs. Daniel Merritt
 Mr. & Mrs. David Mershon
 Mr. & Mrs. Steven Meyer
 Mr. & Mrs. William Meyer, Jr.
 Mr. & Mrs. Scott Michaelis
 Mr. & Mrs. Richard Mickelson
 Ms. Mary Jo Milbank
 Dr. & Mrs. Gregory Miller
 Mrs. Marley Miller
 Mrs. Meghan Miller

Mr. & Mrs. Neil L. Millman
 Mr. & Mrs. R. Marshall Mills
 Mr. & Mrs. Glenn Mitchell
 Mr. & Mrs. Mitch Mitchell
 Mr. & Mrs. Charles Mize
 Mr. & Mrs. Steve Moiles
 Mr. & Mrs. Charles Monaco
 Ms. Lara Monroe
 Mr. & Mrs. Michael Monroe
 Mrs. Meredith Moody
 Ms. Ginny Moore
 Mrs. Charlotte Moore
 Mr. & Mrs. John Moore
 Mr. & Mrs. Robert C. Moore
 Mr. Robert D. Moore
 Mr. Eddie Moreno
 Mr. & Mrs. Kyle Morris
 Mr. & Mrs. Arley Morrison
 Motorola Solutions Foundation
 Mrs. Amie Moyer
 Mr. & Mrs. James P. Murray
 Ms. Doneita Myers
 Mr. & Mrs. Jeff Neal
 Mr. & Mrs. Jason Needleman
 Mrs. Patricia Needleman
 Mr. & Mrs. Ronald M. Nevelow
 Mr. & Mrs. Michael Newell
 Mr. & Mrs. Joey Newman
 Ms. Diana Ng
 Mr. & Mrs. Gary Nicholas
 Mrs. Julie C. Niederer
 Ms. Avie Nikolopoulos
 Mr. & Mrs. John M. Nisbett
 Mr. & Mrs. Rex Norris
 Ms. Andrea Norton
 Ms. Krista Norwood
 Mrs. Pauline Novak
 Ms. Barbara Novotny
 Mr. & Mrs. Bill Nowell
 Mr. & Mrs. Michael Nowell
 Mr. & Mrs. Korbyn O'Connor
 Mr. & Mrs. Ed O'Loughlin
 Ms. Molly O'Neill &
 Ms. Victoria Threlfall
 Ms. Carol R. Oakes
 Mrs. Gillie Odom
 Mr. Christopher Ogden
 Mr. & Mrs. Robert J. Olsen
 Orix Foundation
 Ms. Monica Orr
 Mr. & Mrs. Frederic Ortiz
 Mr. Richard S. Oxenreider
 Mr. & Mrs. Anthony Pace
 Mr. & Mrs. Jerald Pace
 Mr. & Mrs. Nicholas Pace
 Ms. Diane Padgett &
 Ms. Stacey Padgett
 Mr. & Mrs. Don Padgett
 Mr. & Mrs. Ted Palles
 Mr. & Mrs. Anthony Papalas
 Ms. Marcy Parker
 Mr. & Mrs. Jeff Partridge
 Ms. Mary Passmore

Dr. & Mrs. Dhiren Patel
 Ms. Barbara Paxton
 Ms. Dyana Payne
 Mr. & Mrs. Robert K. Payne
 Mr. & Mrs. Joseph L. Pearce
 Ms. Lynne Penner
 Mr. & Mrs. Ralph Perry-Miller
 Mrs. Audrey Perry
 Mr. & Mrs. Mitchell O. Perry
 Mr. Joseph Petruska & Mrs.
 Adrienne Court
 Mr. Tommy Pharr &
 Mrs. Romaine Bumpass-Pharr
 Dr. Jeff Pierce
 Mr. & Mrs. Roger Pierce
 Mr. & Mrs. Jamie Pierson
 Mr. & Mrs. John Pittlik
 Mr. James Ryan Pitts
 Mr. & Mrs. John Podvin, Jr.
 Dr. & Mrs. Edward Pong
 Mr. & Mrs. Claron Pong
 Ms. Sylvia Portnoy
 Mr. & Mrs. Robert Post
 Mrs. Patsie Potts
 Mrs. June Powell
 Mr. & Mrs. John Dale Powers
 Mr. & Mrs. Joseph Pratt
 Mr. & Mrs. Thomas Preheim
 Mr. & Mrs. Michael Preston
 Mr. & Mrs. Mark Prill
 Mr. & Mrs. Charles Prince
 Ms. Peggy Purser
 Dr. & Mrs. Jonathan Quinby
 Mr. Mark Ralston &
 Mrs. Tricia Peaney
 Mr. & Mrs. Mitchell Rasansky
 Mr. & Mrs. Jeff Ratliff
 Mr. & Mrs. Andy Raub
 Mr. & Mrs. Bill Rayburn
 Ms. Carol Reeder
 Mr. James Reeder
 Ms. Lisa Reese
 Mr. Rene Reyes & Mrs. Maria Florez
 Mr. & Mrs. Brett Rheder
 Mrs. Barbara Rickert
 Mr. & Mrs. Stuart Rickert
 Dr. & Mrs. Bryan M. Rigg
 Ms. Beth Riggs
 Ms. Janet Riley
 Mr. & Mrs. Michael Riley
 Ms. Gloria A. Ripoll
 Mr. & Mrs. Marco Rivera
 Mrs. Becky Rivers
 Mr. & Mrs. Richard Robbins
 Ms. Ann Roberts
 Dr. & Mrs. David Roberts
 Mr. & Mrs. J. Malcolm Robertson, Jr.
 Ms. Janie Robertson
 Mr. Larry Robins &
 Rabbi Debbie Robbins
 Mrs. Leslie Robinson
 Mr. & Mrs. Troy Rockman
 Mrs. Dorothy A. Rog

Annual Fund 2013-2014 Continued

Ms. Ann Rogers	Mr. & Mrs. James Smith	Mr. & Mrs. Mark Vitek
Mr. Brian Rogers & Mr. Stephen Hipp	Mr. & Mrs. Jean Smith	Mr. Thomas R. Wagner
Dr. & Mrs. Glenn A. Rogers	Mr. Jerry Smith	Mr. & Mrs. Curtis Wales
Mrs. Jean Rogers	Mr. & Mrs. S. Jay Smith	Mrs. Elizabeth Walgren
Mr. & Mrs. Richard Rogers	Ms. Suzanne Smith	Ms. Catherine Walhord
Mrs. Amanda Rollen	Mr. & Mrs. Shannon Smitherman	Mr. & Mrs. Mark Walker
Mr. & Mrs. Allen Rosa	Mr. & Mrs. Sean Sneathern	Ms. Rachel Wallace
Mrs. Christene Ross	Mr. & Mrs. David Snyder	Mr. & Mrs. Blake Waterhouse
Mr. & Mrs. Michael Ross	Mr. & Mrs. Lars Springman	Ms. Stephanie Weatherford
Mr. & Mrs. James Roth	Mrs. Jerre Sprouse	Ms. Terrell W. Weatherl
Mr. & Mrs. Steve Rowland	Mr. & Mrs. Bob Stafford	Mr. & Mrs. Ben R. Weber
Mr. Clayton G. Russell	Mr. & Mrs. Ryan Stafford	Mrs. Sandy Weiner
Mr. & Mrs. John Rutherford	Ms. Gabrielle Steinberg	Mr. & Mrs. Kraig Wellshear
Mr. Hal Ryan	Mr. & Mrs. Lawrence Steinberg	Mr. Robert Wenning
Mr. Jeffrey Sabel	Ms. Randi Steinhart	Ms. Christina Westfall
Dr. & Mrs. Walid Saleh	Dr. & Mrs. Paul Stelzer	Ms. Tricia Westman & Ms. Jenna Mamola
Mr. Cliff A. Samuelson	Mr. & Mrs. Steven Sterling	Mr. & Mrs. Charles E. Wheeler, Jr.
Ms. Lauren Sanders	Ms. Claudia Stevens	Mr. & Mrs. George Wheeler
Mr. & Mrs. Steven Sands	Mr. Merile Stevenson	Mr. & Mrs. Monk White
Mr. & Mrs. Karl Sanger	Mr. & Mrs. Dan Stewart	Ms. Cassandra Whittington
Mrs. Sara Saver	Dr. & Mrs. James R. Stewart	Ms. Peggy Whitwell
Mr. & Mrs. Thomas R. Saving	Mr. & Mrs. Michael Stitt	Ms. Eleanor J. Wiedie
Mr. & Mrs. Carl Scantlan	Mr. & Mrs. Allen Stoneham	Mr. & Mrs. Merlin Wilkerson
Mr. & Mrs. S. Andrew Schendle	Dr. & Mrs. Richard Strand	Mrs. Sheila Willet
Mr. & Mrs. Frank Schettler	Ms. Ann Stroth	Dr. & Mrs. J.R. Williams, II
Mr. & Mrs. Karl Schopmeyer	Ms. Kathy Stuart	Ms. Amber Williams
Mr. & Mrs. AC Schwark	Mr. & Mrs. Schuyler Stuckey	Mrs. Joni Williams
Mrs. Kathryn Scott Scoper	Mr. & Mrs. Robert G. Surgeoner	Dr. & Mrs. J.R. Williams
Mr. & Mrs. Dave Scott	Mrs. Susan Sutton	Mr. Keith Williams
Dr. & Mrs. Larry B. Scott	Mr. & Mrs. Mark Taken	Ms. Elizabeth Willis
Mr. & Mrs. Charles H. Secker	Mr. & Mrs. Mark Talkington	Ms. Jill Wilson
Mr. & Mrs. Todd Sedwick	Dr. Larry Taub	Mr. & Mrs. Kyle Wilson
Mr. & Mrs. Steven Serber	Mr. & Mrs. Beau Taylor	Mr. & Mrs. Todd Wilson
Mr. & Mrs. Peter Shaddock	Ms. Leigh Taylor	Mrs. Lisa Winkler
Mr. & Mrs. Kevin Shade	Mr. & Mrs. George Teague	Mr. Kevin Witcher
Drs. Abhijit & Neepa Shah	Mr. & Mrs. Andrew Teller	Mr. & Mrs. Don Witte
Mr. & Mrs. Michael Shannon	Mr. & Mrs. Michael Terstriep	Mr. & Mrs. Rick Wojciechowski
Mr. & Mrs. Bill Sharp	Texas Instruments	Mr. & Mrs. Lawrence Wolf
Ms. Linda Sharpe	Mr. & Mrs. Stewart H. Thomas	Mr. & Mrs. Brandon Wood
Mr. Bernard Shaw & Mrs. Julia Simon	Mr. & Mrs. Mike Thomas	Drs. Stacy & Judy Wood
Ms. Karen Shaw	Ms. Christina Thompson	Dr. & Mrs. Thomas Wood
Ms. Whitney Shelley	Dr. & Mrs. William Thompson	Mr. & Mrs. James Woodcock
Shelton School	Mr. & Mrs. Craig Threadgill	Mr. & Mrs. Rodney Woods
Ms. Debbie Shelton	Ms. Debbie Tilger	Mr. & Mrs. Trevor Worcester
Ms. Anne-Marie Shiflet	Ms. Cheryl Tolbert	Ms. Ann Wright
Mr. & Mrs. Ian Shores	Mr. & Mrs. Harry Tomasides	Mr. & Mrs. Charles Wright
Ms. Ann Shortall	Ms. Rochelle Trainer	Mrs. Jean Wright
Ms. G-g Shryer	Mr. Phillip Tran & Mrs. Melissa Ly	Mr. Daniel S. Wu & Dr. Dawn Wu
Mrs. Margie Shuler	Dr. & Mrs. Gerardo Trillo	Mr. & Mrs. Jim Yager
Mr. & Mrs. Gary D. Silansky	Dr. Betty Jo Troeger	Mr. & Mrs. Robert L. Yeager
Mr. & Mrs. Bud Silverberg	Mr. & Mrs. Jack Trompert	Mr. & Mrs. Eugene Yoss
Mrs. Barbara Simmons	Ms. Karen Truitt	Mr. & Mrs. Sanford Yoss
Mr. & Mrs. Steven Simmons	Mr. & Mrs. Bart Turner	Mr. & Mrs. Doug Young
Ms. Lauren Skjott	Mr. & Mrs. John G. Tuthill	Mr. & Mrs. Kelly Young
Mr. & Mrs. Denys Slater, Jr.	Mr. & Mrs. Scott Tuthill	Ms. Martha Young
Mrs. Diann Slaton	Ms. Lisa Tyler	Mr. & Mrs. Wayne Young
Mr. Cary Slobin & Mrs. Lauren Kaplan	Mr. & Mrs. William Uptmore	Mr. & Mrs. Harold Younger
Mr. Robert Small	Ms. Lisa Utley	Mr. & Mrs. Charles James Yuncker
Ms. Bonita Smith	Mr. Kenneth P. Utz	Mr. & Mrs. Steven Zaduk
Mr. & Mrs. Gary Smith	Mr. & Mrs. Terry W. Van Burkleo	Mr. & Mrs. Ronald Zander
	Mr. & Mrs. Spencer Van Ness	Mr. & Mrs. Joe Zasa
	Mr. & Mrs. James E. Vermillion	Mrs. Jennifer Zeavin
	Mr. & Mrs. Mark Viracola	

Annual Fund — Faculty and Staff



Evaluation Center Staff

Mrs. Marilyn Aaron
 Ms. Maggie Adams
 Ms. Jill Alessandra
 Mrs. Lori Anderson
 Ms. Kathryn Baird
 Ms. Sandy Balis
 Ms. Meghan Ball
 Mrs. Theresa M. Ball
 Ms. Taylor Bank
 Ms. Casey L. Barnett
 Ms. Liz Barnett
 Mrs. Mellany Barnett
 Ms. Christine Bedenbaugh
 Ms. Carolyn Bentley
 Ms. Melanie Bentley
 Ms. Laura Berend
 Ms. Kimberly Bice
 Ms. Penny Bigbie
 Mr. Jerry Bishop
 Ms. Billye Blackwell
 Mr. Chris Brendel
 Ms. Carol Brock
 Mrs. Pam Brockway
 Mrs. Debbie Brooke
 Ms. Mary Ann Broussard
 Mr. Glen Brown
 Ms. Judy Browne
 Ms. Sarah Broz
 Mrs. Theresa Bruno
 Mrs. Sherryl Bussell
 Mrs. Sue Cantrell
 Mrs. Meg Carlsen
 Ms. Greta Carter
 Ms. Leslie Cashdollar
 Ms. Tris Casillas
 Dr. Chris Clore
 Ms. Lindsay Cobert
 Mrs. Nancy Coffman
 Ms. Susan Collins
 Ms. Mary Connolly
 Mrs. Marty Cooley
 Ms. Jennifer Counce
 Ms. Suzanne Crawford

Mrs. Stephanie Crowe
 Ms. Krystal Cunningham
 Mrs. Debbie Dauber
 Ms. Christine Davis
 Mrs. Wendy Deppe
 Mrs. Margaret DeTullio
 Mrs. Mandy Dockweiler
 Mrs. Joan Dodd
 Ms. LuAnn R. Dolly
 Ms. Jennifer Drake
 Ms. Mimi Drew
 Ms. Mary Dryden
 Mrs. Claire Duesing
 Ms. Danyle Duke
 Mrs. Jenny Duncan
 Ms. Karen DuPape
 Ms. Libby Evans
 Mr. Gregory Farnsworth
 Mrs. Charlotte Fisher
 Mr. David Fletcher
 Mrs. Mitzi Freeman
 Ms. Laurie Frey
 Ms. Patricia Gallaher
 Dr. Chris Gancarz
 Mrs. Laura Gershenson
 Ms. Mary Gilbert
 Ms. Cathie Gilmore
 Ms. Betty Glasheen
 Ms. Wanda Goldsby
 Ms. Sara Golieb
 Ms. Donna Gonzalez
 Mrs. Liz Gonzalez
 Mrs. Tina Graves
 Ms. Kelly Hall
 Mrs. Becky Hampson
 Mr. Daniel Hanson
 Ms. Amy Harrington
 Mrs. Joni Harris
 Ms. Melissa Harrison
 Ms. Sonja Hayes
 Ms. Claudia Hays
 Ms. Sarah Helffrich
 Mrs. Bonnie Helm

Mrs. Anne Hendrick-Thomas
 Mrs. Stephanie Hicks
 Mrs. Ada Hinkle
 Mr. John Hodges
 Ms. Lauri Hoffman
 Ms. Rose Anne Holman
 Ms. Sherry Houpt
 Mr. Clay Houston
 Ms. Jean Huddleston
 Ms. Anne Hughes
 Mr. David A. Hunt
 Ms. Gwen Jensen
 Ms. Georgana Jinks
 Ms. Lori Johnson
 Ms. Sammie Johnston
 Mrs. Marsha Kaspereit
 Ms. Christina Kasten
 Ms. Barbara Katz
 Mr. Robert Kaufman
 Mr. and Mrs. Rob Kelton
 Ms. Pamela Thrun Kinsell
 Ms. Linda Kneese
 Mr. Zachary S. Ladd
 Mrs. Tina Larson
 Mr. Bill Lau
 Ms. Charlotte Lee
 Ms. Kelly Lee
 Mr. Zilei Leite
 Ms. Christy Lincoln
 Ms. Susie Littrell
 Mr. Chuck Locke
 Mrs. Cathy Luby
 Ms. Gwen Luedtke
 Ms. Patsy Mahfouz
 Mrs. Joy Martello
 Mrs. Debbie McCabe
 Ms. Stephanie McCain
 Ms. Nancy McCann
 Ms. Nancy McCord
 Mrs. Sharon McEachern
 Ms. Mary Jo Milbank
 Mrs. Meghan Miller
 Mrs. Meredith Moody
 Ms. Ginny Moore
 Mr. Eddie Moreno
 Mrs. Amie Moyer
 Ms. Jessica Newman
 Mr. Joey Newman
 Mrs. Julie C. Niederer
 Ms. Avie Nikolopoulos
 Ms. Krista Norwood
 Mrs. Pauline Novak
 Ms. Monica Orr
 Ms. Mary Passmore

Ms. Dyana Payne
 Drs. Robert and Joyce Pickering
 Dr. Jeff Pierce
 Ms. Sylvia Portnoy
 Mrs. Cheryl Prince
 Ms. Peggy Purser
 Ms. Glynn Rasor
 Ms. Lisa Reese
 Ms. Beth Riggs
 Ms. Janet Riley
 Mrs. Becky Rivers
 Ms. Janie Robertson
 Mrs. Leslie Robinson
 Mrs. Amanda Rollen
 Mr. Hal Ryan
 Mr. Cliff A. Samuelson
 Ms. Lauren Sanders
 Ms. Karen Shaw
 Ms. Debbie Shelton
 Ms. Anne-Marie Shiflet
 Ms. Ann Shortall
 Ms. G-g Shryer
 Ms. Lauren Skjott
 Mrs. Diann Slaton
 Mr. Robert Small
 Ms. Bonita Smith
 Mr. Jerry Smith
 Ms. Gabrielle Steinberg
 Mrs. Suzanne Stell
 Ms. Claudia Stevens
 Ms. Ann Stroth
 Ms. Kathy Stuart
 Mrs. Susan Sutton
 Ms. Leigh Taylor
 Mrs. Consuela Teague
 Mr. George Teague
 Mrs. Christy Thomas
 Ms. Debbie Tilger
 Ms. Karen Truitt
 Ms. Lisa Tyler
 Mr. Kenneth P. Utz
 Ms. Catherine Walhooood
 Ms. Stephanie Weatherford
 Ms. Peggy Whitwell
 Ms. Amber Williams
 Mrs. Joni Williams
 Ms. Elizabeth Willis
 Mrs. Lisa Winkler
 Mrs. Stephanie Worcester
 Ms. Ann Wright
 Mrs. Jean Wright
 Mr. and Mrs. Jim Yager
 Mrs. Jennifer Zeavin

Annual Fund — Parent Participation by Class

Grade 12 / Class of 2014

Parent Participation: 43%

Mr. & Mrs. Shy Anderson
Mr. & Mrs. Keith Bessell
Mr. & Mrs. John Birkhoff
Mr. & Mrs. Kevin Boscamp
Dr. & Mrs. Brad Bowman
Mr. & Mrs. John J. Carrier Guillomet
Mr. & Mrs. Charles G. Dannis
Mr. & Mrs. Chris Dawe
Mr. & Mrs. Raymond DeTullo
Mr. & Mrs. J. Scott Gordon
Mr. Richard Gussoni & Ms. Lucy Gussoni
Mr. & Mrs. Clifford A. Hahne
Mr. & Mrs. James L. Halperin
Mr. & Mrs. Dean Harvey
Mr. & Mrs. Don Henley
Mr. & Mrs. Thomas Jones
Mr. & Mrs. Charles Josephs, Jr.
Mr. & Mrs. Kenneth W. Luce
Mr. & Mrs. R. Marshall Mills
Mr. & Mrs. Kenneth Niederer
Mr. & Mrs. Timothy Perry
Mr. & Mrs. Timothy L. Pullen
Ms. Ann Roberts
Ms. Kristy Robinson
Dr. & Mrs. Larry B. Scott
Mr. & Mrs. Steven Simmons
Mr. & Mrs. Mark Viracola
Mr. Daniel S. Wu & Dr. Dawn Wu

Grade 11 / Class of 2015

Parent Participation: 63%

Mr. & Mrs. Kevin Boscamp
Mr. & Mrs. Robert Botens
Dr. Elisabeth Brockie
Ms. Jennifer Clendening
Mr. & Mrs. Ken Coggins
Mr. Craig Collins
Mr. John Cracken
Mr. & Mrs. Patrick Crump
Mr. & Mrs. Doug Diebolt
Dr. & Mrs. Shelby Douglas
Mr. & Mrs. Richard Freudenthal
Mr. & Mrs. Daniel Galway
Mr. & Mrs. Sam Gioldasis
Mr. & Mrs. Evan Griffiths
Mr. & Mrs. Randy G. Johnson
Mr. & Mrs. Joshua A. Kahn
Ms. Diana Ng
Mr. & Mrs. Mitchell O. Perry
Mr. & Mrs. John Podvin, Jr.
Mr. & Mrs. Kelly Roach
Ms. Ann Roberts

Mr. Larry Robins & Rabbi Debbie Robbins
Mr. & Mrs. Steven Sands
Mr. & Mrs. Charles H. Secker
Mr. & Mrs. Gary D. Silansky
Mr. & Mrs. David Snyder
Ms. Robyn Stevens
Mr. Andrew Stevens
Mr. & Mrs. Joe Stone
Mr. & Mrs. Mark Taken
Mr. & Mrs. William Uptmore
Mr. & Mrs. Terry W. Van Burkleo
Mr. Thomas R. Wagner
Mr. & Mrs. Curtis Wales
Mrs. Elizabeth Walgren
Ms. Rachel Wallace
Mr. & Mrs. Lawrence Wolf

Grade 10 / Class of 2016

Parent Participation: 60%

Mr. & Mrs. William Adkins
Mr. & Mrs. Kevin Brand
Mr. & Mrs. William H. Bulmer
Mr. & Mrs. Tim Burroughs
Mr. & Mrs. William Chilton
Mr. & Mrs. Michael Cole
Mr. & Mrs. Ben Crosland
Mr. & Mrs. Michael Dardick
Mr. & Mrs. Armando De Diego
Mr. & Mrs. David Duan
Mr. & Mrs. Mark Fisher
Mr. Richard S. Frankl
Ms. Shelley Frankl
Mr. Charles Gallacher
Ms. Amy K. Gallacher
Mr. & Mrs. David W. Goldstein
Mr. & Mrs. Steve R. Grimmer
Mr. & Mrs. David Haber
Mr. & Mrs. Scott Howley
Mr. & Mrs. Charles Josephs, Jr.
Mr. & Mrs. Jim Judge
Dr. & Mrs. John Kampine
Mr. & Mrs. Michael P. Kaplan
Mr. & Mrs. James Kennedy
Dr. James Kennedy, Jr.
Dr. & Mrs. Jorge Lopez
Ms. Gwen Luedtke
Mr. Ronnie Masters & Ms. Genie Howard
Mr. & Mrs. Glenn Mitchell
Mr. & Mrs. David Schrader
Mr. & Mrs. Michael Shannon
Mr. & Mrs. James Smith
Mr. & Mrs. Allen Stoneham
Dr. Larry Taub
Mr. & Mrs. Mike Thomas

Mr. & Mrs. Anthony Vitullo
Ms. Rachel Wallace
Ms. Terrell Weatherl
Mr. & Mrs. Kyle Wilson

Grade 9 / Class of 2017

Parent Participation: 63%

Mrs. Trish Alessio
Dr. & Mrs. Ernest E. Beecherl
Mr. & Mrs. Benedetto Bongiorno
Mr. & Mrs. David Boyce
Mr. & Mrs. Gregory Brooke
Mr. & Mrs. Douglas Brown
Mr. & Mrs. Barry Burns
Mr. & Mrs. Reid Caldwell
Mr. & Mrs. Billy Clark
Mr. & Mrs. Joe Cleveland
Mr. & Mrs. Jeff Cosby
Mr. John Cracken
Mr. & Mrs. Ben Crosland
Mr. & Mrs. Steven DeWolf
Mr. Brian Ellard
Mr. & Mrs. Bill Esping
Mr. Jeffrey Giese
Ms. Becky Ginn
Mr. & Mrs. William R. Graham
Mr. & Mrs. Owen Hannay
Mr. Robert Haspel & Mrs. Lynda Taylor
Ms. Debbie Herskovitz
Mr. & Mrs. Mike Isett
Mr. Gary Kennedy & Ms. Michele Valdez
Mr. & Mrs. Blake Kresl
Mr. & Mrs. Donald Langlais
Mr. & Mrs. Tony Liscio
Ms. Brynn Long
Mr. & Mrs. Charles Martin
Mr. & Mrs. Bobby McCulloch
Mr. & Mrs. Mark McKenzie
Mr. & Mrs. John Moore
Mr. & Mrs. Ronald M. Nevelow
Mr. & Mrs. Anthony Pace
Ms. Sabrina Polley
Mr. & Mrs. Rick Rogers
Ms. Shelly Rosenberg
Mr. & Mrs. Jean Smith
Mr. & Mrs. Robert G. Surgeoner
Mr. & Mrs. Philip Taken
Mr. & Mrs. Paul Trepagnier
Mr. & Mrs. Bart Turner
Mr. & Mrs. Peter S. White
Mr. & Mrs. Todd Wilson
Mr. & Mrs. Charles James Yuncker
Mr. & Mrs. Ronald Zander

Grade 8 / Class of 2018

Parent Participation: 64%

Drs. Chris & Shawn Abel
Mr. & Mrs. Jeremy Besser
Mr. & Mrs. Ron Bliss
Mr. & Mrs. Robert J. Bluhm
Mr. & Mrs. Damon Borders
Mr. & Mrs. Jeffrey Bragalone
Mr. & Mrs. Chris Brown
Mr. Keith Buresh & Mrs. Laurel Hoitsma
Mr. & Mrs. Joe Cleveland
Dr. & Mrs. Joseph J. Clifford
Mr. & Mrs. David Coleman
Mr. & Mrs. Jim Collet
Mr. & Mrs. Gene Cramm
Mr. & Mrs. James M. Darden
Mr. William R. Dorward
Mr. & Mrs. Todd Eaddy
Mr. & Mrs. Todd Fecht
Mr. & Mrs. Rob Francis
Mr. & Mrs. Richard Freudenthal
Mr. & Mrs. Jesse Garza
Mr. & Mrs. Gary Gifford
Mr. & Mrs. David Hamer
Ms. Katy Henderson
Mr. & Mrs. Mark Higgins
Ms. Sarah Hinojosa
Mr. & Mrs. Craig N. Janssen
Mr. & Mrs. Eric Jones
Mr. & Mrs. Timothy Keen
Mr. & Mrs. Clayton C. Kennedy
Mr. & Mrs. Randall Laza
Mr. & Mrs. Lester Levy, Jr.
Mr. & Mrs. Bruce Lewis
Mr. & Mrs. Marc Lipshy
Mr. & Mrs. David Lurie
Mr. & Mrs. Ira Matsil
Ms. Liz Meiteen
Mr. & Mrs. Stephen Meloncon
Mr. & Mrs. Daniel Merritt
Mr. & Mrs. Glenn Mitchell
Mr. Taylor Mitchell & Mrs. Jan Leeds
Mr. & Mrs. Michael Nowell
Mr. & Mrs. Ted Palles
Mr. & Mrs. Jeff Partridge
Mr. & Mrs. Ralph Perry-Miller
Mr. & Mrs. Michael Preston
Mr. & Mrs. Brad Reeves
Mr. Jeffrey Sabel
Dr. & Mrs. Louis Sloan
Mr. & Mrs. David Snyder
Mr. & Mrs. Mark Talkington
Dr. & Mrs. William Thompson
Mr. & Mrs. Mark Walker

Ms. Cassandra Whittington
Mr. & Mrs. Kelly Young
Mr. & Mrs. Steven Zaduk
Mr. & Mrs. William Zaemes

Grade 7 / Class of 2019

Parent Participation: 74%

Mr. Max Antich & Dr. Pingying Wang
Mr. & Mrs. David Armour
Mr. & Mrs. Lynn Banks
Mr. & Mrs. Philip Banks
Mr. & Mrs. Dan Barbara
Mr. Brent Barry & Ms. Susan Cox
Ms. Brenda Black
Ms. Cynthia Boggs
Mr. & Mrs. Luis Boy
Mr. & Mrs. Chris Brown
Mr. & Mrs. John Brusniak
Dr. & Mrs. Robert Burns
Mr. & Mrs. Bill Camp
Mr. & Mrs. Frank Campise, Jr.
Mr. Will Clarke & Ms. Michelle Witcher
Mr. & Mrs. Daniel M. Cohn
Mr. & Mrs. Tom Dailey
Mr. & Mrs. William Daves, IV
Dr. & Mrs. Michael Desaloms
Mr. & Mrs. Joe Dwyer
Mr. & Mrs. Joel Eastman
Mr. & Mrs. Eddie Eckart
Dr. & Mrs. Paul Eggert
Mr. & Mrs. Mark Ehrenreich
Mr. Brian Ellard
Mr. & Mrs. Todd Fecht
Mr. & Mrs. Mark Fisher
Mr. Mitchell Fonberg
Dr. Fred Ghali & Dr. Tessa Anderson
Mr. Christopher Golden
Ms. Barbara Golden
Mr. Robert Gray & Ms. Elizabeth Ann Schrupp
Dr. Ethan Halm & Ms. Diana Sheehan
Mr. & Mrs. David Hamer
Mr. & Mrs. Edward Heffernan
Mr. & Mrs. Matthew Hickey
Mr. Ray Hutchison &
Sen. Kay Bailey Hutchison
Mr. & Mrs. Marvin Johnson
Mr. & Mrs. Charles Josephs, Jr.
Mr. & Mrs. Tim Kelley
Mr. Christopher Knowles
Ms. Amy Krumholz
Mr. & Mrs. Jere Lehtinen
Mr. & Mrs. Brian Mack
Mr. & Mrs. Paul Mainer
Mr. & Mrs. Mark Matteson



Coach Steve McBride (L) with Tanner Owens and family on signing day for Northwestern State Louisiana (Track and Field)

Dr. & Mrs. Joseph W. McNutt
Ms. Liz Meiteen
Mr. & Mrs. Steve Moiles
Ms. Lara Monroe
Mr. & Mrs. Max Orth
Mr. & Mrs. Ketan Patel
Mr. & Mrs. Mark Prill
Mr. & Mrs. Stuart Rickert
Mr. & Mrs. Marco Rivera
Ms. Shelly Rosenberg
Mr. & Mrs. Steve Rowland
Mr. & Mrs. Carl Rubin
Dr. & Mrs. Walid Saleh
Ms. Whitney Shelley
Mr. & Mrs. Matthew Simons
Dr. & Mrs. Gregg Small
Mr. & Mrs. Kirby Smith
Mr. & Mrs. Sean Sneathern
Dr. & Mrs. Jeffrey C. Toubin
Mr. & Mrs. Anthony Vitullo
Mr. Kevin Witcher

Grade 6 / Class of 2020

Parent Participation: 74%

Mr. & Mrs. Sami Abbasi
Mr. & Mrs. Benjamin Bain
Mr. & Mrs. C. William Balthrope
Dr. & Mrs. David Banks
Mr. Gary Bolton & Ms. Elena Katok
Anonymous
Mr. & Mrs. Kevin Boscamp
Mr. & Mrs. Paul Bret
Dr. & Mrs. John Calhoun
Mr. & Mrs. Scott Carr
Mr. & Mrs. John J. Carrier Guillomet
Mr. & Mrs. Gary Clay
Mr. & Mrs. James D'Ambrosio
Ms. Katherine Doctor-Troup
Mr. William R. Dorward
Mr. & Mrs. Todd Eaddy
Mr. Mark Evangelist
Mr. & Mrs. Brian Farlow
Mr. & Mrs. Hunter Ferguson
Mr. & Mrs. Bradley Fleming
Mr. & Mrs. Ken Gabelmann

Annual Fund — Parent Participation by Class Continued



Shelton Speech Clinic Staff

Mr. & Mrs. Jacob Goetz
 Mr. Wade Goodwyn & Dr. Sharon Sandell
 Mr. & Mrs. Will Gordon
 Mr. & Mrs. James H. Graass, Sr.
 Ms. Kal Grant
 Mr. & Mrs. J. Shannon Gregson
 Mr. Jay Grob
 Mr. & Mrs. Brian Halliburton
 Mr. & Mrs. Bruce Henderson
 Mr. & Mrs. Robert Hinds
 Mr. & Mrs. Leonard Hirsch
 Dr. & Mrs. Rick Hostin
 Mr. & Mrs. G. Ellison Hurt, III
 Dr. Sara Jones
 Mr. Jeffrey Kaplan & Mrs. Lisa Newman
 Mr. & Mrs. Ray Kembel
 Mr. & Mrs. Eric Kline
 Mr. & Mrs. Christopher Korman
 Dr. & Mrs. Jaryl Korpinen
 Mr. & Mrs. Marc Lipshy
 Mr. & Mrs. Brian Mantzey
 Mr. & Mrs. Andrew Mathews
 Mr. & Mrs. Mark Matteson
 Mr. & Mrs. Kevin Mattison
 Mr. John Newby & Mrs. Maria Karos
 Mr. & Mrs. John M. Nisbett
 Mr. & Mrs. Michael Nowell
 Ms. Molly O'Neill & Ms. Victoria Threlfall
 Dr. & Mrs. Dhiren Patel
 Mr. & Mrs. Alfonso Pino
 Mr. & Mrs. John Pitlik
 Mr. Mark Ralston & Mrs. Tricia Peaney
 Mr. Rene Reyes & Mrs. Maria Florez
 Mr. & Mrs. Michael Riley
 Mr. & Mrs. Marco Rivera
 Dr. & Mrs. David Roberts
 Mr. & Mrs. Richard Rogers
 Mr. & Mrs. Todd Sedwick

Mr. & Mrs. Emmitt J. Smith, III
 Mr. & Mrs. Michael Stitt
 Mr. Phillip Tran & Mrs. Melissa Ly
 Ms. Tricia Westman & Ms. Jenna Mamola
 Mr. & Mrs. Charles Wheeler
 Mr. & Mrs. Don Witte
 Mr. & Mrs. Don Witte
 Mr. & Mrs. Joe Zasa

Grade 5 / Class of 2021 Parent Participation: 73%

Mr. & Mrs. Garrett Adams
 Mr. & Mrs. Enis Akgerman
 Mr. & Mrs. Jaime Aron
 Mr. & Mrs. Leon Banowetz
 Mr. & Mrs. Caesar Bernal
 Dr. & Mrs. Aaron Bransky
 Mr. Clifford Burton
 Mr. & Mrs. Charles Byars
 Mr. & Mrs. Frank Campise, Jr.
 Mr. & Mrs. Tony Cecil
 Mr. & Mrs. Tim Clay
 Mr. & Mrs. Paul Coon
 Mr. & Mrs. James M. Darden
 Ms. Jennifer Davis
 Mr. & Mrs. Richard Dix
 Mr. Thomas F. Dodge
 Ms. Natalie Dodge
 Mr. & Mrs. Joseph Eckert
 Dr. & Mrs. Esmail Elwazir
 Mr. & Mrs. Jeff Epstein
 Mr. & Mrs. Rossi W. Felix
 Ms. Jennifer Frank
 Mr. & Mrs. Mark Giles
 Mr. Christopher Golden
 Ms. Barbara Golden
 Mr. & Mrs. Aaron Gordon
 Mr. & Mrs. John Hudson
 Dr. Beth Kassanoff
 Mr. Greg Kassanoff
 Ms. Wendy Krispin & Ms. Penny Krispin
 Mr. & Mrs. Adam Lampert
 Dr. & Mrs. Jason Marchetti
 Mr. & Mrs. Shawn McBride
 Mr. & Mrs. Kevin McDermott
 Mr. William McKenzie &
 Mrs. Jennifer Nagorda
 Mr. & Mrs. Mason McNairy
 Mr. & Mrs. Tim McSorley
 Mr. & Mrs. David Mershon
 Mr. & Mrs. David Mershon
 Mrs. Marley Miller
 Mr. & Mrs. Kyle Morris

Mr. & Mrs. Michael Newell
 Ms. Diane Padgett & Ms. Stacey Padgett
 Mr. Joseph Petruska & Mrs. Adrienne Court
 Mr. & Mrs. Jamie Pierson
 Mr. & Mrs. Jeff Ratliff
 Dr. & Mrs. Bryan M. Rigg
 Mr. Bernard Shaw & Mrs. Julia Simon
 Mr. & Mrs. Shannon Smitherman
 Mr. & Mrs. David Snyder
 Ms. Gabrielle Steinberg
 Dr. Scott Stone
 Mr. & Mrs. Phillip Taken
 Dr. & Mrs. Gerardo Trillo
 Mr. & Mrs. John Vandercook
 Mr. & Mrs. Anthony Vitullo
 Mr. & Mrs. Merlin Wilkerson
 Mr. & Mrs. Brandon Wood
 Drs. Stacy & Judy Wood
 Mr. & Mrs. Trevor Worcester

Grade 3 & 4 / Class of 2022 & 2023 Parent Participation: 68%

Mr. & Mrs. Abid Abedi
 Mr. & Mrs. Greg Adair
 Mr. & Mrs. Paul Aidala
 Mr. & Mrs. Michael Androvett
 Mr. & Mrs. Marc Armentrout
 Dr. & Mrs. Roy Ashton
 Mr. & Mrs. Leon Banowetz
 Mr. & Mrs. William Barkley
 Ms. Tamara Bennett
 Mr. & Mrs. Nathan Bernbaum
 Mr. & Mrs. Thomas Billings
 Mr. & Mrs. Steve Blackwell
 Ms. Locie Boggs
 Dr. & Mrs. Aaron Bransky
 Mr. & Mrs. Travis Carter
 Mr. Ted Casey & Ms. Angela Wommack
 Mr. & Mrs. Fred H. Clairmont
 Mr. & Mrs. Ty Cobb
 Mr. & Mrs. Scott Cohen
 Mr. & Mrs. Marshall Cooper
 Dr. & Mrs. Kenneth Dauber
 Mr. & Mrs. B. Todd Dillard
 Dr. & Mrs. Daniel Dow
 Dr. & Mrs. Paul Eggert
 Ms. Jennifer Frank
 Mr. & Mrs. Jeff Frank
 Ms. Jill Free
 Mr. & Mrs. Eli Gershenson
 Dr. & Mrs. Michael Hahsler
 Mr. & Mrs. Byron Harrell
 Dr. & Mrs. Erik Harrington

Mr. & Mrs. Chris Heavner
 Mr. & Mrs. Jeb Hensarling
 Mr. & Mrs. J. Patrick Heptig
 Mr. & Mrs. Carlos Hoefken
 Mr. & Mrs. Michael Holmes
 Mr. & Mrs. G. Ellison Hurt, III
 Ms. Angela Jablonski
 Mr. & Mrs. Michael C. Jackson
 Mr. & Mrs. Barry Jones
 Mr. & Mrs. Dan Kahle
 Mr. & Mrs. Michael Kane
 Mr. & Mrs. Darren Kozelsky
 Mr. Paul Lackey
 Mr. & Mrs. Lester Levy, Jr.
 Mr. & Mrs. Bruce Lewis
 Drs. Nelson & Christy Littrell
 Mr. & Mrs. Chris Livingston
 Mr. & Mrs. Chris Lloyd
 Mr. & Mrs. Randall Marchant
 Mr. & Mrs. Michael Mauceli
 Ms. Aundria McCullar
 Mr. & Mrs. Tim McSorley
 Mr. & Mrs. Scott Michaelis
 Mr. & Mrs. Mitch Mitchell
 Mr. & Mrs. Michael Monroe
 Ms. Martha Moore
 Mr. Alan Moore
 Mr. & Mrs. Jason Needleman
 Mr. Christopher Ogden
 Mr. & Mrs. Frederic Ortiz
 Ms. Diane Padgett & Ms. Stacey Padgett
 Mr. & Mrs. Randy Polka
 Dr. & Mrs. Edward Pong
 Mr. & Mrs. Marco Rivera
 Mr. & Mrs. Mark Robbins
 Dr. & Mrs. David Roberts
 Mr. & Mrs. Doug Robison
 Mr. & Mrs. Troy Rockman
 Ms. Ann Rogers
 Mr. & Mrs. Carl Scantlan
 Mr. & Mrs. Peter Shaddock
 Mr. & Mrs. S. Jay Smith
 Mr. & Mrs. Emmitt J. Smith, III
 Mr. & Mrs. Ryan Stafford
 Ms. Randi Steinhart
 Mr. Kenny Steinhart
 Mr. & Mrs. Steven Sterling
 Mr. & Mrs. Dan Stewart
 Dr. Scott Stone
 Mr. & Mrs. Beau Taylor
 Mr. & Mrs. Michael Terstriep
 Ms. Cheryl Tolbert
 Mr. & Mrs. Scott Tuthill

Ms. Lisa Utley
 Mr. & Mrs. Kraig Wellshear
 Mr. & Mrs. Sanford Yoss
 Mr. & Mrs. Wayne Young

Primary Grades 1 & 2 / Class of 2024 & 2025

Parent Participation: 68%

Mr. & Mrs. Michael Alexander
 Mr. & Mrs. Travis Anderson
 Anonymous
 Mr. & Mrs. Marc Armentrout
 Mr. & Mrs. Corey Bailey
 Mr. Gary Baird, Jr.
 Ms. Peggy Baird
 Mr. & Mrs. Michael J. Bauer
 Mr. Earle Bensing
 Mr. & Mrs. Kent Bertino
 Dr. & Mrs. Waldo Bracy
 Ms. Nicole Canales
 Mr. & Mrs. Chris Capriotti
 Mr. Patrick Cargo & Mrs. Jonna Barta
 Mr. & Mrs. Clay Cash
 Mr. Chris Cole & Mrs. Laurie Sprouse
 Mr. & Mrs. Alejandro De La Cerda
 Mr. & Mrs. Dahlem Dodson
 Mr. & Mrs. Brian Donohoe
 Mr. William R. Dorward
 Dr. & Mrs. Christopher Dreiling
 Mr. & Mrs. Randall Ebner
 Mr. & Mrs. Todd Fecht
 Mr. & Mrs. Christopher Finetto
 Mr. & Mrs. William Froelich
 Mr. & Mrs. Tommy Gilbreath, Jr.
 Mr. & Mrs. Brett Glass
 Mr. Robert Grossman & Mrs. Elise Back
 Dr. & Mrs. Michael Hahsler
 Mr. & Mrs. Christopher Korman
 Mr. Jan Kruger
 Mr. Alan Lawrence &
 Mrs. Marbella Hernandez
 Mr. Brian Lemery & Dr. Elyse Lemery
 Mr. & Mrs. Joseph Malvezzi
 Mr. & Mrs. James McGoldrick
 Dr. & Mrs. Gregory Miller
 Mr. Michael Mitchell
 Mr. & Mrs. Christopher Myers
 Mr. & Mrs. Michael Nowell
 Mr. & Mrs. Korbyn O'Connor
 Mr. Christopher Ogden
 Mr. & Mrs. Bart Plaskoff
 Mr. & Mrs. Robert Post
 Mr. & Mrs. Thomas Preheim
 Mr. & Mrs. Brett Rheder

Dr. & Mrs. David Roberts
 Mr. & Mrs. Michael Serber
 Drs. Abhijit & Neepa Shah
 Dr. & Mrs. Tommy Spain
 Mr. & Mrs. Craig Threadgill
 Mr. & Mrs. Harry Tomasides
 Mr. James Vasilas & Mr. Charles Marlett
 Dr. & Mrs. Robert Westerberg
 Ms. Tricia Westman & Ms. Jenna Mamola

Pre-Primary / Class of 2026

Parent Participation: 52%

Mr. & Mrs. Casey Becker
 Mr. Adam Dougherty
 Dr. & Mrs. Bryan Elvebak
 Mr. Robert Kunovich & Dr. Sheri Kunovich
 Mr. Steven Lawrence
 Mr. & Mrs. Mark Marshall
 Mr. & Mrs. Joey Newman
 Mr. Brian Rogers & Mr. Stephen Hipp
 Mr. & Mrs. Nick Schaeffer
 Mr. Merile Stevenson
 Mr. & Mrs. Mark Vitek

Early Childhood / Class of 2027

Parent Participation: 64%

Mr. & Mrs. Corey Bailey
 Mr. & Mrs. Jonathan Carrier
 Mr. & Mrs. Steven Chapman
 Dr. & Mrs. Christopher Dreiling
 Ms. Heather Graham
 Mr. & Mrs. Travis G. Heinrichs
 Drs. Andy & Callie Hollenshead
 Mr. & Mrs. Jon Jurgovan
 Mr. Jan Kruger
 Mr. & Mrs. Ihor Kupchynsky
 Mr. & Mrs. James Mathis
 Mr. & Mrs. James McGoldrick
 Mr. & Mrs. Jeff Neal
 Mr. & Mrs. Thomas Preheim
 Dr. & Mrs. Jonathan Quinby
 Dr. & Mrs. David Roberts
 Mr. & Mrs. S. Andrew Schendle
 Drs. Abhijit & Neepa Shah
 Mr. Cary Slobin & Mrs. Lauren Kaplan
 Dr. & Mrs. Fernando Torres
 Ms. Tricia Westman & Ms. Jenna Mamola
 Mr. & Mrs. Cory Whitaker

Annual Fund — Grandparents

Mr. & Mrs. William Adkison
Xavier Kunovich 2026

Mr. & Mrs. Harry Albert
Hayden Hipp 2026

Mr. & Mrs. Jerry Allen
Dylan Sneathern 2019

Mr. & Mrs. Peter Antich
Evan Antich 2019

Mrs. Betsy Armour
Ethan Armour 2019

Mr. & Mrs. Gordon Asher
Garrett Kembel 2020

Mr. & Mrs. Bill Austin
Cooper Gudgel 2020

Mr. & Mrs. Sterling C. Bain, Jr.
Madelyn Bain 2020

Mr. & Mrs. James Baker, III
Leland Winston 2018

Zander Winston 2024

Mr. & Mrs. William Balthrope
William Balthrope 2020

Dr. & Mrs. Lionel Barraza
Nick Coulter 2016

Cate Coulter 2021

Mrs. Judy Barrett
William Balthrope 2020

Mrs. Sherry Bartholow
Luke Garza 2018

Mr. & Mrs. Richard Bass
Charlie Witte 2020

Dr. & Mrs. Jay M. Beck
Miles Beck 2014

Dr. Earl D. Bellamy
Ben Wilson 2016

Dr. Alfred Bessell III
Connor Bessell 2014

Mr. & Mrs. John Bitzer
Cole & Elise Needleman 2022

Mr. & Mrs. Russell Bolton
Uriel R Bolton 2020

Ms. Irene Bond
Timothy Bond 2020

Mr. & Mrs. Donald Botens
Gretchen Botens 2015

Mr. & Mrs. Roger C. Bowman
Kennedy Moore 2021

Mrs. Huda Bragalone
Annabelle Bragalone 2018

Mr. & Mrs. Stuart Brand
Shelby Brand 2016

Mr. & Mrs. Todd Bratton
Jonathan Capriotti 2024

Mrs. Patricia J. Breen
Neely & Peter Krispin 2021

Mrs. Carole Brotman
Alec Nelson 2020

Rachel Nelson 2017

Mr. & Mrs. Fred D. Brown
Andrew Brown 2018

Kyle Brown 2019

Mr. & Mrs. Douglas Bunnell
Schuyler Livingston 2023

Mr. & Mrs. Robert F. Buresh
Zane Buresh 2018

Mr. Virgil Burkhardt
Grant Miller 2024

Ms. Kaye Burkhardt
Grant Miller 2024

Mr. & Mrs. Lloyd A. Byerhof
Max Besser 2018

Mr. & Mrs. James C. Campbell
Marilyn Cracken 2015

Preston Cracken 2017

Mr. & Mrs. Dominick P. Capriotti
Jonathan Capriotti 2024

Mrs. Joyce Carroll
Caroline Farish 2018

Mrs. Katherine Cashon
Ryan Cashon 2020

Will Cashon 2022

Mr. & Mrs. James Chambers
Dashiell Dreiling 2024

Greer Dreiling 2027

Mr. & Mrs. Robert Champney
Hannah Tuthill 2022

Mr. & Mrs. Chester Claudon
Emily Rogers 2022

Mrs. Judy Clymer
Andrew Ogden 2023

Taylor Ogden 2025

Mr. & Mrs. Martin Cohn
Ally Hickey 2019

Ms. Rebecca Collins
Meredith Dodson 2024

Mr. Jack B. Cook
Chandler Tolbert 2022

Mr. & Mrs. Delbert Cordum
Chase Cordum 2015

Mr. & Mrs. Jack Corman
Max Besser 2018

Mr. & Mrs. Lee Crisler
Alex Frank 2023

Mrs. Margaret Crump
Grayson Crump 2015

Mr. & Mrs. William A. Custard
George Hurt 2020

Henry Hurt 2023

Dr. & Mrs. Malcolm D. Davidson
Zachary Taylor 2022

Mrs. Carolyn E. Davis
Noah Young 2023

Mr. & Mrs. David Davis
Landon Davis 2020

Dr. & Mrs. Steve Davis
Carlos Davis 2021

Ms. Virginia Dawe
Katie Dawe 2014

Mr. & Mrs. Allan DeWitt
Bailee Adkins 2016

Ms. Nancy Diebolt
Bo Diebolt 2015

Mr. & Mrs. Larry Dix
Gracie Dix 2021

Mr. & Mrs. Michael Dorn
Alex De La Cerda 2025

Mr. & Mrs. Robert Dutton
Grace Orth 2019

Mr. & Mrs. Ben Dyess
Connell Curtis 2023

Eloise Curtis 2027

Mr. & Mrs. Gerald Eckart
Jacob Eckart 2019

Mr. & Mrs. Arthur E. Edwards
Lucas Black 2018

Sy Black 2023

Dr. & Mrs. Jack Ehrhardt
Dylan Henderson 2018

Mr. & Mrs. Bernard Eisenstat
Kara Eisenstat 2019

Mrs. Sandra Erwin
Zach Sabel 2018

Mr. & Mrs. Joe Evangelist
Zoe Evangelist 2020

Mr. & Mrs. Marty Evans
Luke Baird 2024

Mr. & Mrs. Ernest Feldgus
Lexi Galardi 2018

Shae Galardi 2021

Mr. & Mrs. Jerry E. Fischer
Addison Smith 2016

Mr. & Mrs. Edwin Fisher
Zachary Fisher 2016

Cole Fisher 2019

Mr. Jim Cargile & Dr. Sue Francis
Andrei Francis 2018

Mr. & Mrs. Sheldon Frankel
Noah Hirsch 2020

Mr. & Mrs. Karl Frankl
Dylan Frankl 2016

Free Family Foundation
Natalie Free 2022

Drs. Hugo & Anita Freudenthal
Jacob Freudenthal 2015

Katarina Freudenthal 2018

Mr. Paul Godwin
Caeden Wood 2021

Mr. & Mrs. Harold Gold
Zoe Evangelist 2020

Mr. & Mrs. Robert P. Goldman
Jeffrey Brusniak 2019

Ms. Christine Graf
Rodes Slater 2023

Will Slater 2026

Mr. & Mrs. Guy Grant
Izzy Grant 2020

Judge & Mrs. George R. Greene
Avanna Davenport 2014

Mrs. Mary Ann Grippo
Ben Finetto 2024

Mr. Howard Hallam
Hale & Hite Hallam 2024

Mr. & Mrs. Keith Halliburton
Taylor Halliburton 2020

Mr. & Mrs. David Hamilton
Sofi Barbara 2019

Mrs. Janis Hanes
Jared Willis 2015

Mrs. Lynda Hardeman
Cooper Hardeman 2025

Dr. & Mrs. John P. Harley
Grant Young 2023

Audrey Young 2027

Ms. Jane R. Harley
Grant Young 2023

Audrey Young 2027

Mrs. Shirley Haspel
Aidan Haspel 2017

Mr. & Mrs. Jeffrey Heller
Ford Myers 2025

Mrs. Jeanette Henderson
Dylan Henderson 2018

Mr. & Mrs. Monty Herson
Spencer Silansky 2015

Mrs. Anne Hester
Charlie Robbins 2022

Mrs. Peggy Hinds-Baker
Harper & Haven Hinds 2020

Ms. Martha Hinojosa-Nadler
Jarrod Glover 2018

Mr. & Mrs. Forrest Hoglund
Tori Robinson 2014

Mr. & Mrs. J. T. Housewright
Connor Housewright 2019

Mr. & Mrs. Chuck Howley
Anna Howley 2015

Mrs. Caroline Hunt
Stark Heinrichs 2027

Mr. & Mrs. Roger Hutton
Delaney Brown 2020

Mr. & Mrs. Ted Ingersoll
Hayde Higgins 2018

Mrs. Betty James
Garrett James 2022

Mr. & Mrs. Jerry W. Jones
Shy Anderson 2014

Ms. Kate Juett
Ellie Crosland 2016

Carrter Crosland 2019

Ms. Karen Kaplan
Stephanie Kaplan 2016

Ms. Brenda Kelly
Ryan Cashon 2020

Will Cashon 2022

Mr. & Mrs. Richard Key
Aine Donohoe 2024

Mr. & Mrs. Gordon Koblitz
Cole Westman 2020

Caden Westman 2024

Jordan Mamola 2023

Mrs. Enid Kripke
Cooper Chimbrel 2015

Mr. & Mrs. Robert Kuhnert
Cullen Mershon 2021

Ms. Jean E. Lange
Jenna McDermott 2021

Ms. Virginia Lauderdale
Ava Aidala 2022

Ms. Rita Levin
Sam Robbins 2015

Mr. & Mrs. Julian Levin
Samantha Pong 2022

Mr. & Mrs. Harry Littrell
Reese Littrell 2023

Mr. & Mrs. Frederick London
Grant London 2022

Dr. & Mrs. James Lowell
Corbin Shaddock 2022

Mr. & Mrs. Benny Lucas
Becka Reaves 2014

Mr. & Mrs. Jeff Lurie
Chasida Lurie 2018

Mr. & Mrs. John Madden
Jack Madden 2015

Mr. & Mrs. David E. Maddux
Hannah Wolf 2015

Mrs. Vella Jo Martin
Andrew Martin 2017

Mr. & Mrs. John Martinez
Wyatt Scott 2014

Ms. Jennie McCament
Sutton Rockman 2022

Mr. & Mrs. Charles McCormack
Alister Hollenshead 2027

Mr. & Mrs. Jon McGarity
Arianna McGarity 2020

Ms. Norma McKern
Matthew Halbeisen 2020

Mr. & Mrs. Gordon McLeod
Thomas George 2026

Mr. & Mrs. Rajnikant Mehta
Kavin Shah 2024

Dylan Shah 2027

Mr. & Mrs. John D. Melton
Mary Claire Melton 2023

Mr. & Mrs. A.P. Merritt
Merritt Ford 2015

Mr. & Mrs. Richard Mickelson
Logan Scantlan 2022

Mr. & Mrs. Robert Mills
Mason Mills 2014

Mr. Taylor Mitchell &
Mrs. Jan Leeds
Oscar Eakett 2018

Mr. & Mrs. Charles Mize
Joshua Fecht 2018

Jacob Fecht 2024

Mr. & Mrs. Charles Monaco
Maddy Greenberg 2016

Mrs. Charlotte Moore
Blake Brady 2020

Mr. & Mrs. Robert C. Moore
Cooper Hardeman 2025

Mr. & Mrs. Arley Morrison
Brandon Dillard 2022

Mr. & Mrs. James P. Murray
Nick Giodasis 2015

Mrs. Patricia Needleman
Cole & Elise Needleman 2022

Mr. & Mrs. Gary Nicholas
Jack Witcher 2019

Mr. & Mrs. Rex Norris
Jake DeWolf 2017

Ms. Andrea Norton
Hunter Wrather 2016

Mr. & Mrs. Bill Nowell
Aaron Nowell 2024

Zachary Nowell 2018

Mr. & Mrs. Ed O'Loughlin
Brendon Mack 2019

Ms. Carol R. Oakes
Rider Harrington 2023

Mrs. Gillie Odom
Tucker Boggs 2022

Mr. Richard S. Oxenreider
Amy Clairmont 2022

Mr. & Mrs. Nicholas Pace
Stefani Pace 2017

Mr. & Mrs. Don Padgett
Jacob Padgett 2021

Hunter Padgett 2023

Mr. & Mrs. Anthony Papalas
Jason Papalas 2014

Ms. Marcy Parker
Zach Goldstein 2016

Mr. & Mrs. Robert K. Payne
Maddie Stoneham 2016

Ms. Lynne Penner
Ellie Weinberg 2025

Mrs. Audrey Perry
Albert Perry 2015

Mr. Tommy Pharr &
Mrs. Romaine Bumpass-Pharr
Preston Pierce 2020

Drs. Robert & Joyce Pickering
Hadley Newman 2026

Mr. & Mrs. Roger Pierce
Preston Pierce 2020

Mr. & Mrs. Claron Pong
Sami Pong 2022

Mrs. Carrie Postolos
Marki Tomasides 2025

Mrs. Patsie Potts
Andrew Luce 2014

Mr. & Mrs. John Dale Powers
Jordan Powers 2019

Mr. & Mrs. Joseph Pratt
Harry Pratt 2018

Jack Pratt 2022

Mr. & Mrs. Merlin Preheim
Connor Preheim 2027

Matthew Preheim 2025

Mr. & Mrs. David Ralston
Max Ralston 2020

Mr. & Mrs. Mitchell Rasansky
Steven Rasansky 2014

Mr. & Mrs. Andy Raub
Kyle Brown 2019

Andrew Brown 2018

Kallie Galvan 2018

Mr. & Mrs. Bill Rayburn
Robert Burns 2019

Mrs. Barbara Rickert
Reilly Rickert 2019

Ms. Gloria A. Ripoll
Ellie Dodge 2021

Mr. & Mrs. John L. Roach
Sam Roach 2015

Mr. & Mrs. Richard Robbins
Charlie Robbins 2022

Mr. & Mrs. Leonard Roberts
Darcy Fisher 2020

Mrs. Dorothy A. Rog
Ethan Westerberg 2024

Dr. & Mrs. Glenn A. Rogers
Kyle Williams-Konarski 2017

Mrs. Jean Rogers
Kimberly Polley 2017

Mr. & Mrs. Allen Rosa
Gray Anderson 2025

Mr. & Mrs. Michael Ross
Garrett James 2022

Mrs. Christene Ross
Victoria Mitchell 2023

Mr. & Mrs. James Roth
Noah Hirsch 2020

Mr. Clayton G. Russell
Katarina Freudenthal 2018

Jacob Freudenthal 2015

Mr. & Mrs. Karl Sanger
Gavin Cruz 2021

Ian Cruz 2025

Mr. & Mrs. Naishadh Saraiya
Aneesa Patel 2019

Mr. & Mrs. Thomas R. Saving
Blake Youngblood 2018

Mr. & Mrs. Frank Schettler
Hannah Field 2017

Mr. & Mrs. Karl Schopmeyer
Andrew Cobb 2022

Mr. & Mrs. AC Schwark
Caitlin Dailey 2019

Mrs. Kathryn Scott Scoper
Hannah Howard 2016

Mr. & Mrs. Dave Scott
Wyatt Scott 2014

Mr. & Mrs. Steven Serber
Max Serber 2024

Mr. & Mrs. Bill Sharp
Matthew Watrous 2023

Mr. & Mrs. Tom Shelton
Piper Grzych 2026

Mr. & Mrs. Ian Shores
Matthew Steinhart 2023

Mrs. Margie Shuler
Cole Miller 2021

Mr. & Mrs. Bud Silverberg
Kara Eisenstat 2019

Mrs. Barbara Simmons
Tyler Simmons 2014

Mr. & Mrs. Denys Slater, Jr.
Rodes Slater 2023

Will Slater 2026

Mr. & Mrs. Rick Slaven
Schaefer Terstriep 2023

Ms. Suzanne Smith
Abby Marshall 2020

Mr. & Mrs. Gary Smith
Emma McNairy 2021

Mrs. Jerre Sprouse
Zachary Cole 2025

Mr. & Mrs. Bob Stafford
Ben Stafford 2023

Mr. & Mrs. Ron Steinhart
Matthew Steinhart 2023

Dr. & Mrs. Paul Stelzer
Justin Rigg 2021

Dr. & Mrs. James R. Stewart
Sydney Stewart 2023

Dr. & Mrs. Richard Strand
Timothy Gildersleeve 2018

Mr. & Mrs. Schuyler Stuckey
Drew Stuckey 2022

Mr. & Mrs. Chris H. Tomasides
Marika Tomasides 2025

Ms. Rochelle Trainer
Grace Breitenfeld 2015

Dr. Betty Jo Troeger
Kate Clifford 2018

Mr. & Mrs. John G. Tuthill
Hannah Tuthill 2022

Mr. & Mrs. James E. Vermillion
Aidan Eeffing 2016

Mr. & Mrs. Blake Waterhouse
Noah Dardick 2016

Dr. & Mrs. William Weaver
Ryan Cashon 2020

Will Cashon 2022

Mrs. Sandy Weiner
Mitchell Weiner 2017

Ms. Christina Westfall
John Podvin 2015

Mr. & Mrs. George Wheeler
Connor Preheim 2027

Matthew Preheim 2025

Mr. & Mrs. Charles E. Wheeler, Jr.
Sage Wheeler 2020

Mr. & Mrs. Monk White
Stella Fite 2019

Ms. Eleanor J. Wiedie
J.D. Gregson 2020

Mrs. Sheila Willet
Mitchell Weiner 2017

Dr. & Mrs. J.R. Williams
Kyle Konarski 2017

Mr. & Mrs. Donald Wills
Cooper Gudgel 2020

Ms. Jill Wilson
Jack Witcher 2019

Mr. & Mrs. Robert Winckler
Cooper Burns 2017

Dr. & Mrs. Thomas Wood
Connor Wood 2021

Mr. & Mrs. James Woodcock
Seth Kassanoff 2021

Mr. & Mrs. Rodney Woods
Perry Esping 2017

Mr. & Mrs. John Wrather
Hunter Wrather 2016

Mr. & Mrs. Charles Wright
Slayton Pierson 2021

Mr. & Mrs. Robert L. Yeager
JD Zasa 2020

Mr. & Mrs. Eugene Yoss
Lacey Yoss 2022

Mr. & Mrs. Doug Young
Noah Young 2023

Mr. & Mrs. Harold Younger
Justin Kline 2020

Annual Fund — Parents of Alums

Anonymous
Mr. & Mrs. Phillip Applebaum
Mrs. Anna Armstrong
Mr. & Mrs. Kenneth Baker
Mr. & Mrs. Larry Ball
Mr. & Mrs. Edwin Bell
Dr. & Mrs. Michael J. Biavati
Mr. Scott Birnbaum
Mr. & Mrs. Bert Blair
Mr. & Mrs. William Blankenship
Mr. & Mrs. Benedetto Bongiorno
Mr. & Mrs. William H. Bulmer
Mr. & Mrs. Barry Burns
Mr. & Mrs. Dan Busbee
Mr. & Mrs. Gary Bussell
Mr. & Mrs. D. Harold Byrd, III
Mr. & Mrs. Peter Carlsen
Mr. John R. Carmichael, III
Mr. & Mrs. Mark Carney
Ms. Ruth Secker Chambers
Mr. Bill Cole
Mr. & Mrs. Michael Cole
Mr. & Mrs. Brian Colwill
Drs. Charles & Jeannine Cook
Mr. & Mrs. Michael Crowe
Mr. & Mrs. Patrick M. Custer
Mr. & Mrs. Stuart Cutshall

Mr. & Mrs. J. Stewart Dawson
Mr. & Mrs. Mike Dodd
Ms. Tomima L. Edmark
Mr. & Mrs. Christopher Geymuller
Dr. Steven Goldfine &
Mrs. Deborah Deitsch-Perez
Mr. & Mrs. James H. Graass, Sr.
Mr. & Mrs. Bob D. Harrison
Mr. & Mrs. David T. Helffrich, Jr.
Mr. & Mrs. James Hildenbrand
Ms. Laura K. Hill
Mr. & Mrs. Carl H. Holliday
Mr. & Mrs. Frank Houseman
Mr. & Mrs. Scott Howley
Mr. & Mrs. Todd M. Hunt
Mr. & Mrs. Paul Jarzemsky
Mr. & Mrs. Scott O. Jones
Ms. Susan J. Kuddes
Mr. & Mrs. John I. Levy
Mr. Daniel P. Little &
Ms. Elizabeth Bobo Little
Dr. & Mrs. J. Fernando Mandujano
Mr. & Mrs. Kennethh Mayer
Mr. & Mrs. Robert McCamey, Jr.
Mr. & Mrs. Kevin McDermott
Mr. & Mrs. David Mershon
Mr. & Mrs. Steven Meyer

Mr. & Mrs. Kenny Moore
Dr. & Mrs. Paul Neubach
Ms. Barbara Novotny
Mr. & Mrs. Robert J. Olsen
Mr. & Mrs. David A. Pace
Ms. Barbara Paxton
Mr. & Mrs. Charles Prince
Mr. James Reeder
Mr. & Mrs. Kelly Roach
Mr. & Mrs. John Rutherford
Dr. & Mrs. William Ryan, III
Ms. Susan Schwartz
Mr. & Mrs. Kevin Shade
Mr. & Mrs. Scott Sheffield
Mr. & Mrs. Raymond Smerge
Mr. & Mrs. Jerry Smith
Bishop Raymond Sutton &
Mrs. Susan Sutton
Dr. Larry Taub
Mr. & Mrs. Andrew Teller
Mr. & Mrs. Stewart H. Thomas
Mr. & Mrs. Jack Trompert
Mr. & Mrs. Trey Velvin
Mr. & Mrs. Ben R. Weber
Mr. & Mrs. Peter S. White
Mr. & Mrs. Phillip Wiggins
Dr. & Mrs. J.R. Williams, II
Mr. & Mrs. Keith Young, Jr.

Corporate / Matching Gifts

AIG
Alliance Data
Ameriprise Financial
AT&T
Ben E. Keith
Bank of America
Cisco
Coca-Cola
Communities Foundation of Texas
Container Store
Ericsson
ExxonMobil Corporation

Fujitsu
Genentech
Hunt Consolidated, Inc.
IBM
MassMutual
Motorola Solutions Foundation
Orix Foundation
Quest
Raytheon
Rosewood
Texas Instruments
Towers Perrin



Annual Fund — Tribute Gifts

Gifts to the Annual Fund were made

In Honor of:

Ava Aidala
Gray Anderson
Shayna & Michelle Applebaum
Alex Armstrong
Madelyn Bain
David & Sally Baird
Luke Baird
Meghan & Casey Ball
William Balthrope
Max Adler Besser
Lucas & Sy Black
Uriel Bolton
Timothy Bond
Gretchen Botens
Tracey & Taylor Bowsher
Blake Brady
Annabelle Bragalone
Shelby Brand
Andrew & Kyle Brown
Jeffrey Brusniak
Zane Buresh
Jonathan Capriotti
Maddie Cargo
Thomas Carlsen
Collin Cash
Ryan & Will Cashon
Amy Clairmont
Kate Clifford
Andrew Cobb
Ethan Cohn
Jack Collet
Ethan Conklin
Nick & Cate Coulter
Grayson Crump
Caitlin Dailey
Noah Dardick
Avanna Davenport
Carlos Davis
Andrew DeTullio
Brandon Dillard
Timothy Dodd
Ellie Dodge
Aine Donohoe
Mr. Will Dorward &
Dr. Susan McKinney
Jacob Eckart
Aidan Eeffing
Kara Eisenstat
Caroline Farish
Loren Ferrer
Hannah Field
Ben Finetto
Charlotte Fisher
Darcy Fisher
Becky Fleming

Andrei Francis
Mitzi Freeman
Jacob & Katarina Freudenthal
Lexi & Shae Galardi
Cameron Gallacher
Laura Gershenson
Cailey Ginn
Nick Gioldasis
Betty Glasheen
Maddy Greenberg
Piper Grzych
Matthew Halbeisen
Mary Hanson
Cooper Hardeman
Alec & Cayley Harris
Callan Harrison
Aidan Haspel
Dylan Henderson
Harper & Haven Hinds
Hayden Hipp
Noah Hirsch
Alistar Hollenshead
Hannah Howard
Deja Jackson
Garrett James
Stephanie Kaplan
Justin Kline
Will Kresl
Neely & Peter Krispin
Xavier Kunovich
Reese Littrell
Grant London
Andrew Luce
Daniel Mandujano
Ian Marr
Abby Marshall
Andrew Martin
Jenna McDermott
Arianna McGarity
Mary Claire Melton
Cullen Mershon
Grant Miller
Mason Mills
Kennedy Moore
Ford Myers
Alec & Rachel Nelson
Aaron & Zachary Nowell
andrew & Taylor Ogden
Stefani Pace
Jason Papalas
Zachary Paxton
Preston Pierce
Slayton Pierson
Kimberly Polley
Samantha Pong
Josh Post
Jordan Powers



Grandparents' Day brings smiles

Max Ralston
Reilly Rickert
Sam Roach
Charlie Robbins
Tori Robinson
Cliff Samuelson
Wyatt Scott
Max Serber
Corbin Shaddock
Laura Shade
Kavin & Dylan Shah
Spencer Silansky
Rodes & Will Slater
Addison Smith
Dylan Sneathern
Matthew Steinhart
Marki Tomasides
Hannah Tuthill
Andrew Velvin
Peter B. Wallace
Ross Weber
Mitchell Weiner
Kross Wellshear
Ethan Westerberg
Kyle Williams-Konarski
Jared Willis
Jack Wilson
Leland & Alexander Winston
Charlie Witte
Hannah Wolf

Caeden Wood
Hunter Wrather
Grant & Audrey Young
Noah Young
JD Zasa

In Memory Of:

Christopher Lee Baker
Kelly Barnett
Mary Frances Berryman
Shirley Breitenfeld
Mrs. Carney
Scott F. Cooley
Faith Elizabeth Durham
Mr. & Mrs. R. W. Evans
Christine Frenzel
Elizabeth Lynn Jones
Richard Luby
Meredith Lyon
Raymond Gibson "Gibby"
McEachern
Rich Miller, Jr.
Jonathan Pace
Evelyn Pitts
Brian Price
Maisie & Ashley Raymon
Billie Shryer
Jeff Smith
Harlow Sprouse
Robin Weiner

In-Kind & Restricted Gifts

In-Kind Gifts

Ms. Megan Ball
Mr. and Mrs. Rhett Bentley
Container Store
Ms. Sara Golieb
Ms. Melissa Harrison

Ms. Barbara Katz
Mr. and Mrs. Larry Krause
Ms. Charlotte Lee
Ms. Joan McGraw
Mr. John Newby and Ms. Maria Keros

Drs. Robert and Joyce Pickering
Dr. Sylvia Richardson
Ms. Kristy Robinson
Mr. Jerry Smith
Vitec

Restricted Gifts

Anonymous
Mr. & Mrs. Chris Armstrong
Ms. Mary Bashara
Mr. & Mrs. Paul Billings
Dr. & Mrs. Brad Bowman
Ms. Jeannie Bresler
Mr. & Mrs. J. Crozier Brown
Ms. Judy Browne
Mr. & Mrs. Barry Burns
Mr. & Mrs. Warren Cornil
Cowboy Toyota/Scion
Mr. John W. Cracken
Mr. & Mrs. Michael Dardick
Mr. & Mrs. Chris Dawe
The Discovery Foundation
Ms. Joan Dodd
Dale & Roger Gandall
Mr. & Mrs. Jesse Garza
Mr. & Mrs. Nathan Gaudette
Ms. Mary Gilbert
Gregg Industrial Insulators
Ms. Deborah Brown Grissen
Mr. & Mrs. Richard Gussoni
Mr. & Mrs. Chris Guta
Mr. & Mrs. Clifford Hahne
Mr. & Mrs. James L. Halperin
The Harold Simmons Foundation
Mr. & Mrs. K. H. Huddleston
Mr. & Mrs. Kenneth J. Hughes
Jerry Jones Family Charities
Mr. & Mrs. Charles Josephs, Jr.
Mr. Gary Kennedy & Ms. Michele Valdez
Ms. Suzy Lazarow
Mr. & Mrs. Chris Lloyd
Mr. & Mrs. Kenneth Luce
Mr. & Mrs. John Madden
Mr. & Mrs. Stephen Meloncon
Ms. Mary Jo Milbank
Ms. Carolyn T. Myers
Mr. Gilbert Nettleton
Mr. & Mrs. Kenneth Niederer
Mr. & Mrs. David Pace
Mr. & Mrs. Timothy E. Perry
Drs. Robert & Joyce Pickering
Mr. & Mrs. Raymond Pittet
Mr. & Mrs. Todd Price
Mr. & Mrs. Timothy L. Pullen
Mr. & Mrs. William Rapier
Redstone Interests, Inc.
Ms. Kristy Robinson

Mr. & Mrs. Rick Rogers
Mr. & Mrs. William Rowan
The Rupe Foundation
The Stephen M. Seay Foundation, Inc.
Shelton Upper School Social Studies Dept.
Shelton Upper School
Pat & Emmitt Smith Charities
Mr. & Mrs. Brad Smith
Stallings Foundation
Vista Academy of Coppell
Mr. & Mrs. William Ward
Mr. & Mrs. Michael C. West

Krippner Fund

Anonymous
Ms. Mary Bashara
Ms. Judy Browne
Mr. John W. Cracken
Mrs. Joan Dodd
Mr. & Mrs. Raymond Pittet
Shelton Upper School Social Studies Dept.
Shelton Upper School

Class 2014 "A Legacy of Learning"

Mr. & Mrs. Paul Billings
Dr. & Mrs. Brad Bowman
Mr. & Mrs. Chris Dawe
Mr. & Mrs. Nathan Gaudette
Mr. & Mrs. Richard Gussoni
Mr. & Mrs. James L. Halperin
Mr. & Mrs. Charles Josephs, Jr.
Ms. Suzy Lazarow
Mr. & Mrs. Kenneth W. Luce
Mrs. Julie C. Niederer
Mr. & Mrs. Timothy E. Perry
Mr. & Mrs. Todd Price
Mr. & Mrs. Timothy L. Pullen
Mr. & Mrs. William Rapier
Mr. & Mrs. Michael C. West

Gifts were made in Honor Of:

Ms. Nancy Diebolt
Ms. Melissa Driver
Miss Mackenzie Hagood
Mr. Chuck Locke
Mr. Benton Markey
Mr. David F. Martineau
Ms. Lou McMillan
Ms. April Southworth Munoz
Mr. Wil Ridling

Gifts were made In Memory Of:

Mr. Royal Bettis, Jr.
Ann & Joseph Caton
Mr. Tom Hunt
Mr. Andy Krippner
Ms. Pauline LaValle
Mr. James Louis Leverenz
Mr. Robbie Donald Maxwell
Ms. Rada Maxwell
Mr. Joseph O'Connell
Mr. Jeff Smith
Ms. Angy Underwood Swift
Mr. Harold R. Webb
Mr. Ronnie Lee Williams

2013 Golf

Anonymous
Paul Billings
Kevin & Shea Boscamp
Glen Brown
Don Kay Clay Cash Foundation
Dina Fay Culberson
D&H Insurance Partners LLC
Charles Dannis
Eugene & Melissa Dours
Adam Dunayer
William & Margaret Dwiggin
Mitchell Fonberg Invest.
D.W. Gold Construction
Green Bank
Ben E. Keith
Blake D. Kresl
Glenn Mitchell
J.P. Morgan
Gilbert Nettleton
Andrew Schwarz
Andrew Stevens
Joe & Tara Stone
Thompson & Knight
Weaver & Tidwell
Kyle & Susan Wilson

Auction Donors

2B Organized
 Amore Italian
 Amy's Collection
 An Organized State
 Charlotte & Shy Anderson
 Lori Anderson
 Animal Crackers
 Anonymous
 APEX Wellness Center
 Kimberly & David Armour
 Artful Dancewear
 AT&T Performing Arts Center
 Taylor Bank
 Barking Hound Village
 Casey Barnett
 Mellany Barnett
 Robert Baxter
 Christine Bedenbaugh
 Ben E. Keith
 Carolyn Bentley
 Bibbentuckers
 Kim Bice
 Billy Bob's Texas
 Billy Reid
 Blackson Brick Company
 Billye Blackwell
 Lindsay Bock
 Bonnie Pressley Decorating Den Interiors
 Bosco Pet Photography
 Mr. & Mrs. Lee Boyle
 Sarah Jo Boyle
 Mr. & Mrs. Scott Brady
 Brainworks, Inc.
 Branching Out Floral & Event Design
 Carol Brock
 Mary Ann Broussard
 Judy Browne
 Sarah Broz
 Albert Burns
 Carol Burcham
 Café Pacific
 Zac Campbell
 Campisi's Restaurant
 Shelley Capriotti
 Meg Carlsen
 Carol Slobin Fine Art
 Mr. & Mrs. Jay Carrigan

Mr. & Mrs. Jonathan Carrier
 Amber Carter
 Ashley & Clay Cash
 Celebration Restaurant
 Chamberlain Studios of Self Defense
 Linda & James Chambers
 Champion Ranch
 Cheesecake Factory
 Cindi's N.Y. Deli, Restaurant & Bakery
 Cinemark 17 & Imax
 Cisco Grill
 Ty Cobb
 Bill Cole
 Susan Collins
 Mary Connolly
 Cornea Associates of Texas
 Cowboys Golf Club
 Mr. & Mrs. Scott Cronister
 Mr. & Mrs. Carter Crow
 CTC Martial Arts
 Nicole Cuellar
 Cycling Center Dallas
 Dallas Arboretum
 Dallas Children's Theatre
 Dallas Holocaust Museum
 Dallas Mavericks
 Dallas Stars
 Dallas Summer Musicals
 Dallas Symphony Orchestra
 Dallas Yoga Center
 Dallas Zoo
 Deborah Dauber
 Christine Davis
 Mr. & Mrs. Chris Dawe
 Margaret DeTullio
 Richard Dix
 LuAnn Dolly
 Jenny & Adam Dougherty
 Jennifer Drake
 Dr. & Mrs. Chris Dreiling
 Drybar
 Claire Duesing
 Danyle Duke
 Elvebak Orthodontics
 Enlighten
 Heather & Bill Esping
 Karen Eubanks



Liam Schaeffer ponders daily business as Executive Director for the Day

Libby Evans
 Face Logic
 Fernando's Mexican Cuisine
 Charlotte Fisher
 Tracy Fletcher
 Fogo de Chao
 Fort Worth Museum of Science & History
 Fort Worth Zoological Association
 Melissa Freeman
 Frisco Kid's Dentistry
 Frontiers of Flight Museum
 Gail Nogle Photography
 Laura Gershenson
 Cathie Gilmore
 Sara Golieb
 Liz Gonzalez
 Molly Goodson
 Great Outdoors Sub Shops
 Mr. & Mrs. Evan Griffiths
 Kari & Todd Grzych
 Lucy & Richard Gusonni
 Gymboree Play & Music of Plano
 Gayle & Jim Halperin
 Joni Harris
 Melissa Harrison
 Haynsworth Photography
 Heard Natural Science Museum & Wild
 Life Sanctuary

Auction Donors Continued

Mr. & Mrs. David Helffrich
Sharon & Don Henley
Hepworth's
Heritage Auctions
John Hodges
Laurie Hoffman
Hoglund Foundation
Hopdoddy Burger Bar
Mr. & Mrs. Douglas Horstman
Hotel Palomar
Sherry Houpt
House of Blues
Howard Wang's China Grill
Chuck Howley
Jean Huddleston
Anné Hughes
Intelligent Interiors. Inc.
JD's Chippery
Gwen Jensen
Jewish Community Center of Dallas
Georgana Jinks
Lori Johnson
Gene & Jerry Jones
Karon Jones
Nicole Jones

Lee Roy Jordan
Judy Nordseth Photography
Dawn Kahle
Marsha Kaspareit
Christina Kasten
Katie Diebolt & Son Insurance
Barbara Katz
KD College A Subsidiary of
KD Studio, Inc
Amy Kelton
Mr. & Mrs. Gary Kennedy
KIDKRAFT
Blair King
Lisa King
Pamela Kinsell
Linda Kneese
Lackey Herschman, LLP
Lakewood Brewing Company
Mr. & Mrs. Bill LaMothe
Sheryl & Travis Landman
Mr. & Mrs. Randy Laza
Charlotte Lee
Dr. & Mrs. Brian Lemery
Lepley Orthodontics
Christina Lincoln
Little Greek Restaurant
Susie Littrell
Shelly & Chris Lloyd
Chuck Locke
Lockhart Smokehouse
Logos Bookstore
LOOK Cinemas
Cathy Luby
Patsy Mahfouz
Marlett-Vasilas Family
Joy Martello
Mr. & Mrs. David Martineau
Annette & Mark Matteson
Nancy McCann
Mr. & Mrs. Kevin McDermott
Sharon McEachern
Medieval Times
Mesquite Arena / ProRodeo
Mary Jo Milbank
Rick Miller
Becky & Robert Mills
Mine Boutique

Shirley Moiles
Mr. & Mrs. Steve Moiles
Ginny Moore
Move Studio
Amie Moyer
Mr. & Mrs. Chris Myers
Nasher Sculpture Center
Natural Environments Landscape Design
Mr. & Mrs. John Newby
Mr. & Mrs. John Nisbett
North Dallas Veterinary Hospital
Salim Nourallah
Jill & Michael Nowell
Wanda O'Connor
Mr. Chris Ogden
Omni Hotels & Resorts
Monica Orr
Jennifer Ortiz
Patti & David A. Pace
Joe Palladino
Pampillonja Jewelers
Panera Bread
Paper Affair
Park Cities Animal Hospital
Parker School Uniforms
Dyana Payne
Peggy Sue BBQ
Joyce Pickering
Place at Perry's
Mr. & Mrs. Michael Preston
Cheryl Prince
Pump It Up Dallas/Forest Lane
Peggy Purser
David Ranney
Holly & Brad Reeves
Richardson Bike Mart
Robin & William Riddle, Jr.
Beth Riggs
Janet Riley
Esther Ritz
Mr. & Mrs. Marco Rivera
Becky Rivers
Roberta Langley RMT
Robin Jackson Photography
Kristy Robinson/The Hoglund Foundation
Mr. & Mrs. Chuck Rubin
Salata



Asher Slobin is Executive Director for a Day, assisted by Suzanne Stell

SampleHouse & Candle Shop
 Letah Samuelson
 Lauren Sanders
 Scardello Cheese
 Mr. & Mrs. Nick Schaeffer
 Alex Schilpp
 Scotty P's Hamburgers
 Shawn Shannon
 Mr. & Mrs. Brett Sheldon
 Whitney Shelley
 Shelton Golf Tournament
 Shelton Speech Clinic
 Anne Marie Shiflet
 Ann Shortall
 G-g Shryer
 Margaret Simmons
 Tyler Simmons
 Lauren Skjott
 Mr. & Mrs. Cary Slobin
 Slow Bone BBQ
 Robert Small
 Bonita Smith
 Pat & Emmitt Smith
 Sorted Out, LLC
 Southwest Airlines
 Suzanne & Gary Stell
 Stevens Entertainment Group
 Andrew Stevens
 Claudia Stevens
 Strategic Tax Group
 Lola Stenning
 Studio 6 Fitness
 Studio Movie Grill
 Style in the City
 Sunstone Yoga
 Susan Sutton
 Amy & Joel Swan
 T.L.C. Esthetics
 Leigh Taylor
 George Teague
 Texas Ballet Theater
 Texas Motor Speedway
 Texas Rangers Baseball Club
 The Container Store
 The Gem
 The Mat Yoga Studio
 The Toy Maven

Anne Thomas
 Dr. & Mrs. William Thompson
 Deborah Tilger
 Time Out Tavern
 Times Ten Cellars
 Karen Truitt
 Mr. & Mrs. Bart Turner
 Mr. & Mrs. Scott Tuthill
 Lisa Tyler
 Cindy & William Uptmore
 Vanlandingham Associates Interiors
 Holly & Anthony Vitullo
 Catherine Walhood
 Wendy Krispin Caterer
 Mr. & Mrs. Charlie Wheeler
 Peggy Whitwell
 Elizabeth Willis
 Robert Wilonsky
 Owen Wilson
 Lisa Winkler
 WOGA Gymnastics
 Mr. Ted Casey & Mrs. Angela Wommack
 Woodhill Dental Specialties
 Ann Wright
 Sarah Jane Wright
 Write What's Wrong



Stampede Auction Co-Chairs Rachel Dreiling (L) and Heather Cronister



Holiday Happiness 2013

Mr. & Mrs. Enis Akgerman
 Ms. Diane Alder
 Mr. & Mrs. Michael Alexander
 Mr. & Mrs. Travis Anderson
 Mr. & Mrs. Thomas Anderson
 Mr. & Mrs. Michael Androvett
 Anonymous
 Mr. Max Antich
 Mr. & Mrs. Marc Armentrout
 Mr. & Mrs. David Armour
 Mr. & Mrs. Jaime Aron
 Ms. Peggy Baird
 Mr. & Mrs. C. William Balthrope
 Mr. & Mrs. Philip Banks
 Dr. & Mrs. David Banks
 Mr. & Mrs. Leon Banowetz
 Mr. & Mrs. Philip Bates
 Mr. & Mrs. Youri Bebic
 Mr. & Mrs. Casey Becker
 Dr. & Mrs. Dana Bedden
 Mr. & Mrs. Nathan Bernbaum
 Mr. & Mrs. Kent Bertino
 Mr. & Mrs. Paul Billings

Mr. & Mrs. Thomas Billings
 Mr. & Mrs. John Birkhoff
 Ms. Brenda Black
 Mr. & Mrs. Ron Bliss
 Mr. & Mrs. Robert J. Bluhm
 Mr. & Mrs. Jonathan R. Bond
 Mr. & Mrs. Benedetto Bongiorno
 Mr. & Mrs. Luis Boy
 Mr. & Mrs. Lee Boyle
 Mr. & Mrs. Jeffrey Bragalone
 Mr. & Mrs. Kevin Brand
 Dr. & Mrs. Aaron Bransky
 Mr. & Mrs. Paul Bret
 Dr. Elisabeth Brockie
 Mrs. Debbie Brooke
 Mr. & Mrs. Douglas Brown
 Mr. & Mrs. Chris Brown
 Mr. & Mrs. Jon Brownfield
 Mr. & Mrs. John Brusniak
 Mr. Keith Buresh
 Mr. & Mrs. Barry Burns
 Dr. & Mrs. Robert Burns
 Mr. Clifford Burton

Mr. & Mrs. Stephen Cadigan
 Mr. & Mrs. Reid Caldwell
 Dr. & Mrs. John Calhoun
 Dr. Rocio Calle-Rodrigue
 Mr. Anthony Calloway
 Mr. & Mrs. Frank Campise, Jr.
 Mr. & Mrs. Mark Carney
 Mr. & Mrs. Scott Carr
 Mr. & Mrs. Jonathan Carrier
 Mr. & Mrs. John Carson
 Mr. Ted Casey
 Mr. & Mrs. Clay Cash
 Mr. & Mrs. Steven Chapman
 Mr. Aaron Chawla
 Mr. & Mrs. William Chilton
 Mr. & Mrs. Trey Christensen
 Mr. & Mrs. Fred H. Clairmont
 Mr. & Mrs. Billy Clark
 Mr. Will Clarke
 Mr. & Mrs. Tim Clay
 Mr. & Mrs. Gary Clay
 Mr. & Mrs. Joe Cleveland
 Mr. & Mrs. Ty Cobb
 Mr. & Mrs. Scott Cohen
 Mr. & Mrs. Paul Cohen
 Mr. & Mrs. Greg Cohen
 Mr. & Mrs. Daniel M. Cohn
 Mr. & Mrs. Jim Collet
 Mr. & Mrs. Harvey Conklin
 Mr. & Mrs. Paul Coon
 Mr. & Mrs. Jeff Cosby
 Mr. & Mrs. Scott Cronister
 Mr. & Mrs. Robert Cruz
 Mr. & Mrs. Chris Cuzalina
 Mr. & Mrs. Tom Dailey
 Mr. & Mrs. Charles G. Dannis
 Mr. & Mrs. James M. Darden
 Mr. & Mrs. Michael Dardick
 Mrs. Debbie Dauber
 Mr. & Mrs. William Daves, IV
 Mr. & Mrs. Brian Davis
 Mr. & Mrs. Stubbs Davis
 Mr. & Mrs. Chris Dawe
 Mr. & Mrs. Alejandro De La Cerda
 Mr. & Mrs. Wasem Demashkiah



Suzanne Stell, Christine Horstman and Annette Matteson at staff party

Ms. Susan Derr
 Dr. & Mrs. Michael Desaloms
 Mr. & Mrs. Michael G. Devereaux
 Mr. & Mrs. Byron Todd Dillard
 Mr. Richard Dix
 Ms. Katherine Doctor-Troup
 Ms. Natalie Dodge
 Mr. & Mrs. Dahlem Dodson
 Mr. & Mrs. Brian Donohoe
 Mr. William R. Dorward
 Mr. Adam Dougherty
 Dr. & Mrs. Daniel Dow
 Ms. Darlene Drake
 Dr. & Mrs. Christopher Dreiling
 Mr. & Mrs. David Duan
 Mr. & Mrs. Benny Duncan
 Mr. & Mrs. Joe Dwyer
 Mr. & Mrs. Doug Dzina
 Mr. & Mrs. Todd Eaddy
 Mr. & Mrs. Joel Eastman
 Mr. & Mrs. Randall Ebner
 Mr. & Mrs. Eddie Eckart
 Mr. & Mrs. Joseph Eckert
 Mr. & Mrs. Gary Eisenstat
 Dr. & Mrs. Bryan Elvebak
 Mr. & Mrs. Jeff Epstein
 Mr. Mark Evangelist
 Mr. & Mrs. Brian Farlow
 Mr. & Mrs. Todd Fecht
 Mr. & Mrs. Rossi W. Felix
 Mr. & Mrs. Christopher Finetto
 Mr. & Mrs. Judd Fisher
 Mr. & Mrs. Bradley Fleming
 Mr. & Mrs. Brad Fletcher
 Mr. & Mrs. Jeff Forbus
 Mr. & Mrs. Randy Foster
 Mr. & Mrs. Jeff Frank
 Ms. Jennifer Frank
 Ms. Jill Free
 Mr. & Mrs. Richard Freudenthal
 Mr. & Mrs. Ken Gabelmann
 Dr. Steven Gadol
 Mr. & Mrs. Kevin Galvan
 Mr. & Mrs. Daniel Galway
 Mr. & Mrs. Jesse Garza

Dr. Fred Ghali
 Mr. Jeffrey Giese
 Mr. & Mrs. Larry Gingold
 Mr. & Mrs. Sam Gioldasis
 Mr. & Mrs. Brett Glass
 Ms. Elizabeth Goff
 Mr. & Mrs. Christopher Golden
 Mr. & Mrs. David W. Goldstein
 Mr. Kevin H. Good
 Mr. Wade Goodwyn
 Mr. & Mrs. Aaron Gordon
 Mr. & Mrs. Will Gordon
 Ms. Kal Grant
 Mr. & Mrs. Evan Griffiths
 Mr. Robert Grossman
 Mr. Mike Guajardo
 Mr. Richard Gussoni
 Mr. & Mrs. Christopher Guta
 Mr. & Mrs. Keith Haas
 Mr. & Mrs. David Haber
 Mr. & Mrs. Stephen Halbeisen
 Mr. & Mrs. Brian Halliburton
 Dr. Ethan Halm
 Mr. & Mrs. Owen Hannay
 Mr. & Mrs. Denny Hardeman
 Ms. Amy Harrington
 Mr. Robert Haspel
 Mr. & Mrs. Edward Heffernan
 Mr. & Mrs. Travis G. Heinrichs
 Ms. Katy Henderson
 Mr. & Mrs. Don Henley
 Mr. & Mrs. Jeb Hensarling
 Mr. & Mrs. J. Patrick Heptig
 Ms. Debbie Herskovitz
 Mr. & Mrs. Matthew Hickey
 Mr. & Mrs. Mark Higgins
 Mr. Christopher A. Hill
 Mr. & Mrs. Robert Hinds
 Mr. & Mrs. Derek Hodgson
 Mr. & Mrs. Carlos Hoefken
 Drs. Andy & Callie Hollenshead
 Mr. & Mrs. Michael Holmes
 Mr. & Mrs. Doug Horstman
 Dr. & Mrs. Rick Hostin
 Mr. Ed Housewright



Pam Brockway signs up for raffle tickets at party

Mr. & Mrs. Scott Howley
 Mr. & Mrs. John Hudson
 Mr. & Mrs. G. Ellison Hurt, III
 Mr. & Mrs. Mike Isett
 Ms. Angela Jablonski
 Mr. & Mrs. Michael C. Jackson
 Mr. Tommy James
 Mr. & Mrs. Jeff Jannasch
 Mr. & Mrs. Craig N. Janssen
 Mr. & Mrs. David Johnson
 Mr. & Mrs. Isaac Johnston
 Dr. Sara Jones
 Mr. & Mrs. Thomas E. Jones
 Mr. & Mrs. Barry Jones
 Mr. & Mrs. Jim Judge
 Mr. & Mrs. Dan Kahle
 Mr. & Mrs. Joshua A. Kahn
 Mr. & Mrs. Jim Kalahar
 Mr. & Mrs. Michael Kane
 Mr. Jeffry Kaplan
 Mr. & Mrs. Michael P. Kaplan
 Mr. Greg Kassanoff
 Mr. & Mrs. Ray Kembel

Holiday Happiness 2013 Continued

Dr. Tammy Kennedy
 Mr. Gary Kennedy
 Mr. & Mrs. Gordon Koblitiz
 Mr. & Mrs. Jeffrey Kollinger
 Mr. & Mrs. Christopher Korman
 Dr. & Mrs. Jaryl Korpinen
 Mr. Jan Kruger
 Mr. Robert Kunovich
 Mr. & Mrs. Ihor Kupchynsky
 Mr. & Mrs. Adam Lampert
 Mr. & Mrs. Donald Langlais
 Mr. & Mrs. Randall Laza
 Mr. & Mrs. John M. Lee
 Mr. Brian Lemery
 Mr. & Mrs. Bruce Lewis
 Mr. & Mrs. Tony Liscio
 Drs. Nelson & Christy Littrell
 Mr. & Mrs. Chris Livingston
 Mr. & Mrs. Kenneth W. Luce
 Mr. & Mrs. Paul Mainer
 Mr. & Mrs. Joseph Malvezzi
 Mr. & Mrs. Brian Mantzey
 Mr. & Mrs. Randall Marchant
 Dr. & Mrs. Jason Marchetti
 Mr. & Mrs. Jeffrey Marshall

Mr. & Mrs. Charles Martin
 Mr. & Mrs. Andrew Mathews
 Mr. & Mrs. James Mathis
 Mr. & Mrs. Mark Matteson
 Mr. & Mrs. Kevin Mattison
 Mr. & Mrs. Michael Mauceli
 Mr. & Mrs. Bobby McCulloch
 Mr. & Mrs. Kevin McDermott
 Mr. & Mrs. Scott McGarity
 Mr. & Mrs. James McGoldrick
 Mr. & Mrs. Mark McKenzie
 Dr. & Mrs. Joseph W. McNutt
 Mr. & Mrs. Tim McSorley
 Mr. & Mrs. Stephen Meloncon
 Mr. & Mrs. David Mershon
 Mr. & Mrs. Scott Michaelis
 Mrs. Marley Miller
 Dr. & Mrs. Gregory Miller
 Mr. & Mrs. Mark Miller
 Mr. & Mrs. R. Marshall Mills
 Mr. Taylor Mitchell
 Mr. & Mrs. Aldrich C. Mitchell
 Ms. Lara Monroe
 Mr. Michael Shawn Montgomery
 Mr. & Mrs. John Moore
 Mr. & Mrs. Robert Moore
 Mr. & Mrs. Patrick Moore
 Mr. & Mrs. Jason Needleman
 Mr. & Mrs. Ronald M. Nevelow
 Mr. John Newby
 Mr. & Mrs. Michael Newell
 Mrs. Julie C. Niederer
 Mr. & Mrs. John M. Nisbett
 Mr. & Mrs. Michael Nowell
 Mr. Christopher Ogden
 Mr. & Mrs. Michael O'Neill
 Mr. & Mrs. Max Orth
 Mr. & Mrs. Frederic Ortiz
 Ms. Diane Padgett
 Mr. & Mrs. Greg Parker
 Dr. & Mrs. Dhiren Patel
 Mr. & Mrs. Ketan Patel
 Mr. & Mrs. Jason Pawkett

Mr. & Mrs. Timothy Perry
 Mr. & Mrs. Ralph Perry-Miller
 Mr. & Mrs. Jamie Pierson
 Dr. & Mrs. Alfonso Pino
 Mr. & Mrs. Bart Plaskoff
 Mr. & Mrs. John Podvin, Jr.
 Mr. & Mrs. Robert Post
 Mr. & Mrs. Thomas Preheim
 Mr. & Mrs. Todd Price
 Mr. & Mrs. Mark Prill
 Dr. & Mrs. Tim Proctor
 Mr. & Mrs. Timothy L. Pullen
 Dr. Rachel Quinby
 Mr. Mark Ralston
 Mr. & Mrs. William Rapier
 Mr. Rene Reyes
 Mr. & Mrs. Jimmy Richmond
 Dr. & Mrs. Bryan M. Rigg
 Mr. & Mrs. Mark Robbins
 Mr. & Mrs. Timothy G. Robbs
 Ms. Ann Roberts
 Dr. & Mrs. David Roberts
 Mr. Larry Robins
 Mr. Troy Rockman
 Ms. Meg Rockman
 Mr. Robert Rodriguez
 Mr. Brian Rogers
 Mr. & Mrs. Rick Rogers
 Ms. Ann Rogers
 Ms. Elisabeth D. Rogers
 Mr. & Mrs. Richard Rogers
 Mr. & Mrs. Jesse Roth
 Mr. & Mrs. Steve Rowland
 Mr. & Mrs. Carl Rubin
 Dr. & Mrs. Paul Rubin
 Dr. & Mrs. Walid Saleh
 Mr. & Mrs. Steven Sands
 Mr. & Mrs. Carl Scantlan
 Mr. & Mrs. Nick Schaeffer
 Mr. Greg Schardt
 Mr. & Mrs. S. Andrew Schendle
 Mr. & Mrs. Charles H. Secker
 Mr. & Mrs. Todd Sedwick



Adrain Hayes wins a doorprize at holiday party

Mr. & Mrs. Michael Shannon
 Mr. & Mrs. Bill Sharp
 Mr. Bernard Shaw
 Mr. & Mrs. Brett Sheldon
 Mr. & Mrs. Gary D. Silansky
 Mr. & Mrs. Steven Simmons
 Mr. & Mrs. Matthew Simons
 Mr. & Mrs. Rodney Singleton
 Mr. & Mrs. Denys Slater
 Dr. & Mrs. Louis Sloan
 Mr. Cary Slobin
 Mr. & Mrs. Patrick J. Smale
 Dr. & Mrs. Gregg Small
 Mr. & Mrs. Emmitt J. Smith, III
 Mr. & Mrs. Taylor Smith
 Mr. & Mrs. S. Jay Smith
 Mr. & Mrs. Jean Smith
 Mr. & Mrs. Shannon Smitherman
 Mr. & Mrs. Sean Sneathern
 Mr. & Mrs. David Snyder
 Mr. & Mrs. Daniel P. Son
 Mrs. Jerre Sprouse
 Mr. & Mrs. Ryan Stafford
 Mr. Kenny Steinhart
 Mr. Ron Stelmarski
 Mr. & Mrs. Steven Sterling

Mr. & Mrs. Dan Stewart
 Mr. & Mrs. Michael Stitt
 Mr. & Mrs. Steven Sumner
 Mr. Thomas Sutherland
 Mr. & Mrs. Mark Taken
 Mr. & Mrs. Philip Taken
 Mr. & Mrs. Mark Talkington
 Mr. & Mrs. Michael Terstriep
 Dr. & Mrs. William Thompson
 Mr. & Mrs. Todd Thompson
 Mr. & Mrs. Harry Tomasides
 Mr. Phillip Tran
 Mr. & Mrs. Paul Trepagnier
 Mr. & Mrs. Bart Turner
 Mr. & Mrs. Scott Tuthill
 Mr. & Mrs. Mick Twomey
 Mr. & Mrs. William Uptmore
 Mr. & Mrs. Terry W. Van Burkleo
 Mr. & Mrs. John Vandercook
 Mr. James Vasilas
 Mr. & Mrs. Mark Vitek
 Mr. & Mrs. Anthony Vitullo
 Mr. Thomas R. Wagner
 Mr. & Mrs. Curtis Wales
 Mr. & Mrs. Mark Walsh
 Mr. Matthew R. Walters

Mr. & Mrs. Andrew Weinberg
 Mr. & Mrs. Kraig Wellshear
 Mr. & Mrs. Michael C. West
 Dr. & Mrs. Robert Westerberg
 Mr. & Mrs. Charles E. Wheeler, Jr.
 Mr. & Mrs. Cory Whitaker
 Mr. & Mrs. Peter S. White
 Ms. Cassandra Whittington
 Mr. & Mrs. Merlin Wilkerson
 Mr. & Mrs. O. Williams
 Mr. & Mrs. David Williamson
 Mr. & Mrs. Kyle Wilson
 Mr. & Mrs. Robbie Winans
 Mr. William Winston
 Mr. & Mrs. Don Witte
 Mr. & Mrs. Lawrence Wolf
 Mr. & Mrs. Carter Wood
 Mr. & Mrs. Brandon Wood
 Mr. & Mrs. Lane Wooldridge
 Mr. & Mrs. Wayne Young
 Mr. & Mrs. Chris Young
 Mr. & Mrs. Charles James Yuncker
 Mr. & Mrs. William Zaemes
 Mr. & Mrs. Joe Zasa



Shelton Gratefully Acknowledges our Sponsors

Thank You to the Sponsors of our 2013 Shelton Run to Read Charger 5K and Fun Run

100.3 KJKB FM
102.1 FM Alternative Rock
102.9 FM Mix & Variety
1190 AM KFXR
92.5 FM Classic Rock
97.1 FM Rock
98.7 K-LUV FM
ABCO
Albertsons
Aqua Shop
Baylor Health Care System
Bragalone Conroy PC
Camp Gladiator
Check Point Software
Coit Boot and Shoe Repair
Communities foundation of Texas
Dallas Fire-Rescue
Dallas Youth Optical
Kenneth Dauber, MD

Dr. Paul Rubin
Elvebak Orthodontics
Equest Therapeutic Horsemanship
Frisco Kids Dentistry
Hoard Frysh DDS
Great American Cookie Company
Lackey Hershman LLP
High Tech Signs
Highland Park Dental
IPT
Jason's Deli
KLB Designs
La Madeleine
Look! Theatre
Market Street
Martha Justice Moore
Mullis Newby Hurst LP
NorAm Asset Management
Park Cities Learning Disabilities Assoc

Plano Orthopedic Sports Medicine
& Spine Center
Premier Foot and ankle
Prestonwood Eyecare
Primo Fundraising
Dr. Paul Rubin
RunFar
Schorr Law Firm
Schreiner University
Serena Inc, DBA Duxiana
Starbuck's
Subway
Summit Transportation
Sunbelt Industrial Trucks
Tutor Doctor
Whole Foods
World Wear Project
Yoga Synergy Spa

Thank You to the Sponsors of the 2013 Shelton Golf Tournament

Art House
Ben E. Keith Company
Paul Billings
Steve Blackwell
Richard Carey
Clay & Ashley Cash
Cover Clothing /
Stevens Entertainment Group
Dina Culberson
D&H Insurance Partners, Inc.
Chuck Dannis

Dunayer Family
Duxiana
Green Bank
Kahn Mechanical
Blake Kresl
Mitchell Fonberg Investments
John Madden
Manchester Place Assisted Living
Gilbert Nettleton
RBC Wealth Management
Andrew Schwarz

Smart Auto Leasing
Sun TX Capital Partners
George Teague
Andy Teller
Titus Sports Marketing
Robert Warrington
Weaver and Tidwell
Wind Tex Energy



(L to R) George Teague, Gilbert Nettleton, Suzanne Stell, and Glenn Mitchell at tournament's end

Shelton School 2014-2015 Board of Trustees



Executive Committee

Chairman	Gary L. Webb
Vice Chairman	Paul Neubach, M.D.
Chairman Emeritus	James B. (Boots) Reeder
Executive Director/CEO	Suzanne Stell
Executive Director Emerita	Joyce S. Pickering, Hum.D. (ex-officio member)
Secretary	Leon Kaplan
Treasurer	Glen Brown
Additional Members:	Benton W. Markey David Martineau Holly Vitullo



Gary L. Webb, President

Trustees

Charlotte Anderson	David T. Helffrich, Jr.	Janice C. Ryan
John Aspinwall	Kenneth J. Hughes	Suzanne Stell
Edwin S. Bell	Susan P. Jarzemsky	Andrew Teller
Bert Blair	Leon Kaplan	Dee Velvin
J. Crozier Brown	Veronica Lewis	Holly Vitullo
Diane Byrd	Ken Luce	Gary L. Webb
Mark C. Carney	Benton W. Markey	Bobbie Sparks Williams
Chuck Dannis	David F. Martineau	Keith Williams
Nancy Diebolt	Paul Neubach, M.D.	Mary M. Young
Chris Dreiling, M.D.	Barbara Novotny	
Christopher Geymuller	Patti Pace	
Susan Griffiths	William F. Rapier	
Clifford Hahne	James (Boots) Reeder	
Edward J. Heffernan	Brad Reeves	

New Faces On Board

We welcome two new trustees this year and are grateful for the new ideas and contributions they bring to the entire Shelton organization:



John L. Aspinwall

John L. Aspinwall
 Wife Colleen
 Son Jon, 2013 Shelton graduate, attending University of Arkansas
 Daughter Ashley, graduate University of Missouri
 Director, Starkey Mortgage, LLP
 Serves on Shelton Endowment/Development Committee
 Board member, College Golf Fellowship
 Advisory Board member, McCoy School of Business, TX State University



Bradley C. Reeves

Bradley C. Reeves
 Wife Holly
 Son Cole Reeves, Shelton freshman
 Daughter Payton Reeves, Bishop Lynch senior
 Managing Director, Freedom Truck Finance
 Serves on Shelton Finance/Investment Committee
 Board member St. John's Episcopal School,
 Wedgwood Circle Institute, Art House Dallas,
 Thrive Baseball



Shelton School & Evaluation Center
15720 Hillcrest Road Dallas, TX 75248

Non-Profit Org.
US Postage
PAID
Dallas, Texas
Permit No.
4299

Shelton School 2014 - 2015 Calendar Clips



Shelton students adopt a
holiday Salvation Army station



December 2014

22 Winter Break Begins

*Happy Holidays and
Happy New Year!*

January 2015

6 Classes Resume

19 Martin Luther King, Jr. Day – No School

21 Early Intervention Information Meeting
by Joyce S. Pickering

February 2015

6 Upper School Ethics Symposium

12 – 13 Parent Conferences

21 Stampede Benefit Auction

March 2015

8 Daylight Saving Time Begins

9 – 13 Spring Break

April 2015

3 No School

6 – 10 National Library Week

May 2015

8 Mayfest

25 Memorial Day – No School

28 Last Day of School for All Students

30 Seniors' Graduation

June 2015

29 Summer School and Scholars Program Begin



972.774.1772

www.shelton.org