

🔴 = Catch Basin

○ = Off Site Location for WBSD Facilities & Operations

🟢 = Manhole

🟦 = Infiltration Basin

North



3380 Orchard Lake Rd., West Bloomfield, Michigan 48324

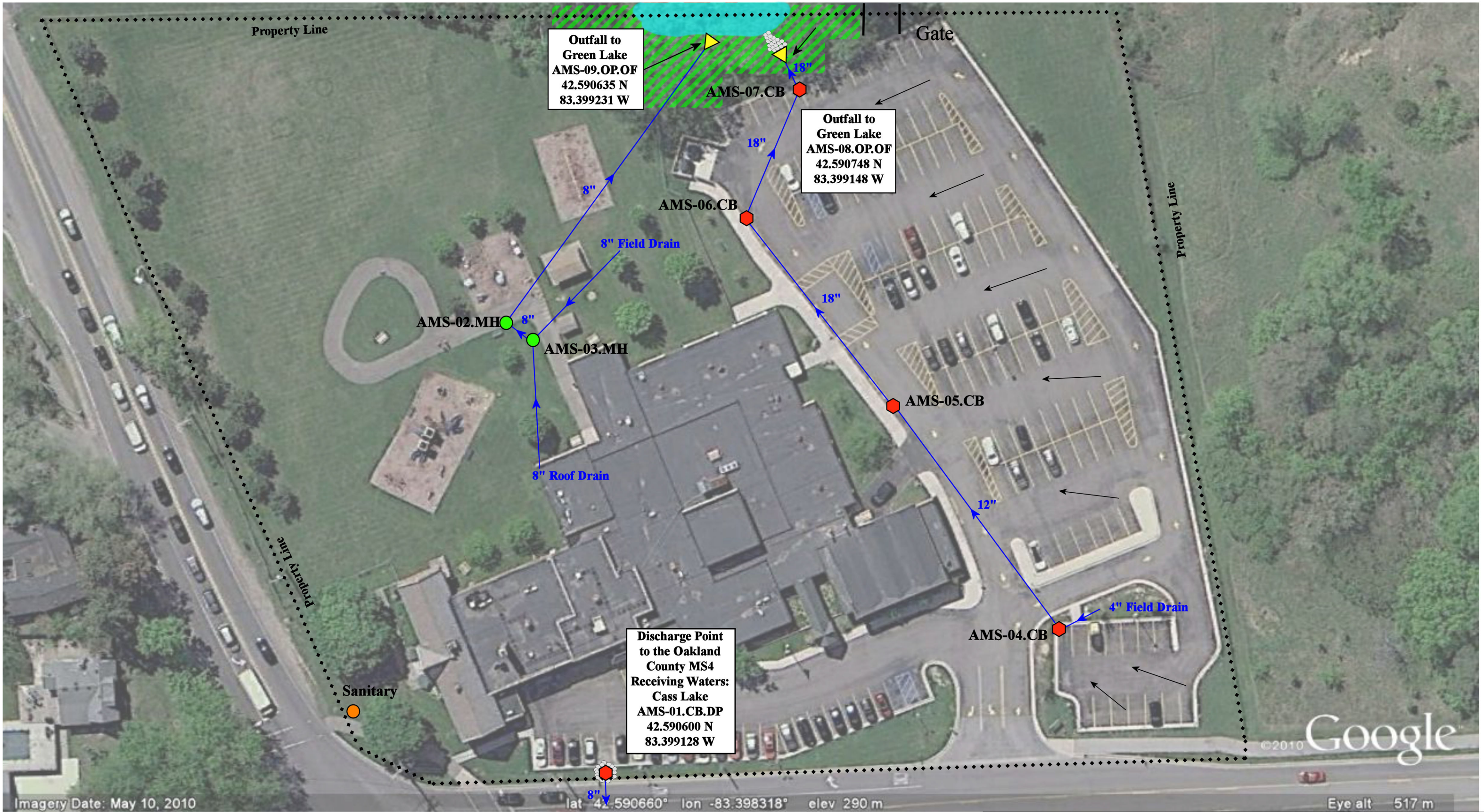
Abbott Middle School

West Bloomfield School District



3380 Orchard Lake Road,
West Bloomfield Township,
Michigan 48324

Date:	1/5/2018
Drawn By:	JF
Scale:	Not to Scale



- = Catch Basin
- = Open Pipe Outlet
- = Manhole
- = Wetland
- = Buffer & Filter Strip
- = Rip Rap



5810 Commerce Road, West Bloomfield Township, MI 48324

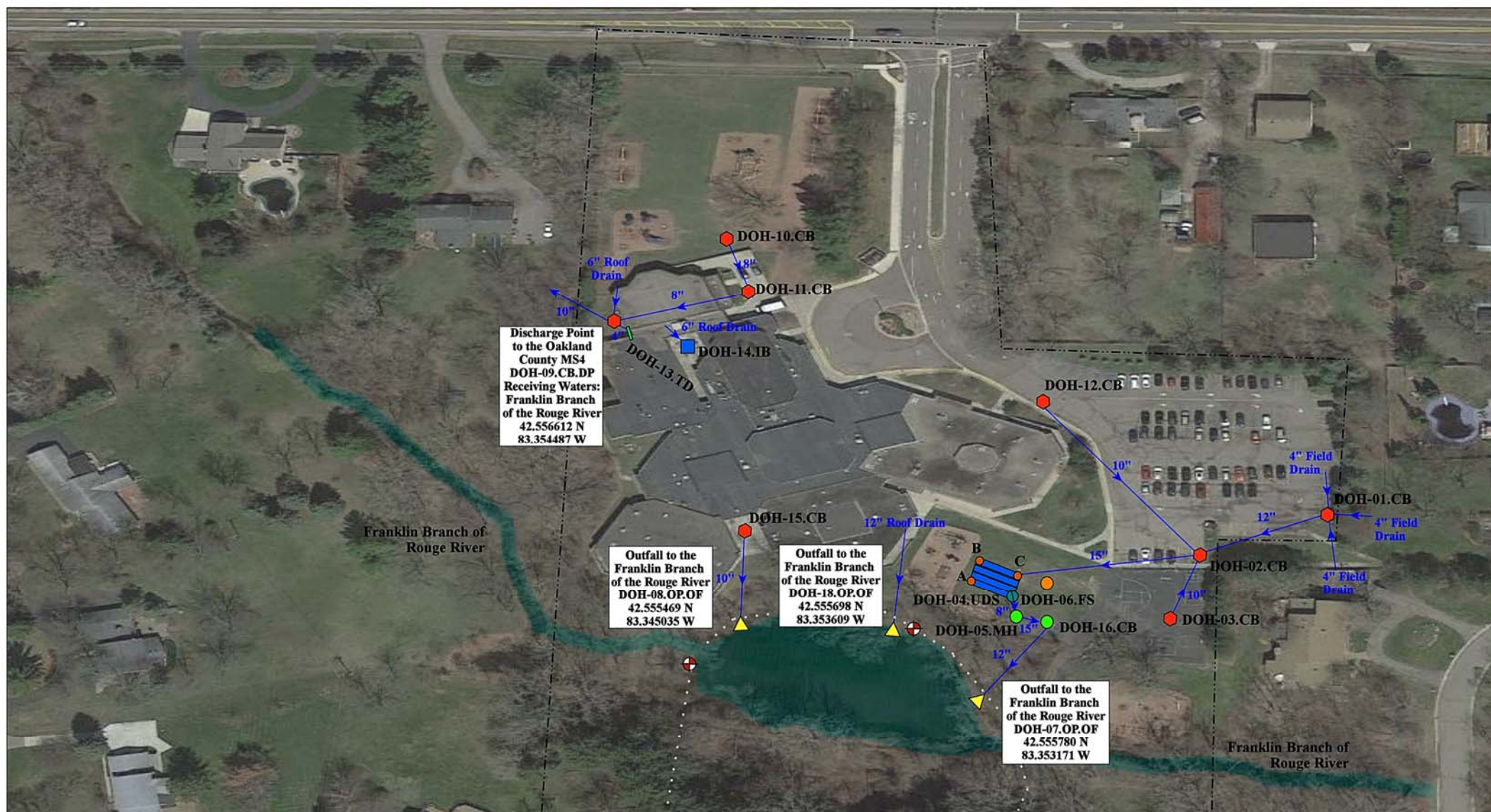
Administration Building

West Bloomfield School District



37720 Interchange Drive
Farmington Hills, MI 48335
Phone: 248-426-0165
Fax: 248-427-0305

Date:	7/12/2017
Drawn by:	AK
Reviewed:	LK
Page #:	1 of 1
Scale:	Not to Scale



- = Catch Basin
- = Manhole
- ▲ = Open Pipe Outlet
- = Underground Detention System

- = Flow Splitter
- = Infiltration Basin
- = Sanitary
- = Trench Drain
- = Property Boundary
- = Fence Line
- ⊕ = Access Point



3675 Walnut Lake Rd, West Bloomfield Twp. 48332

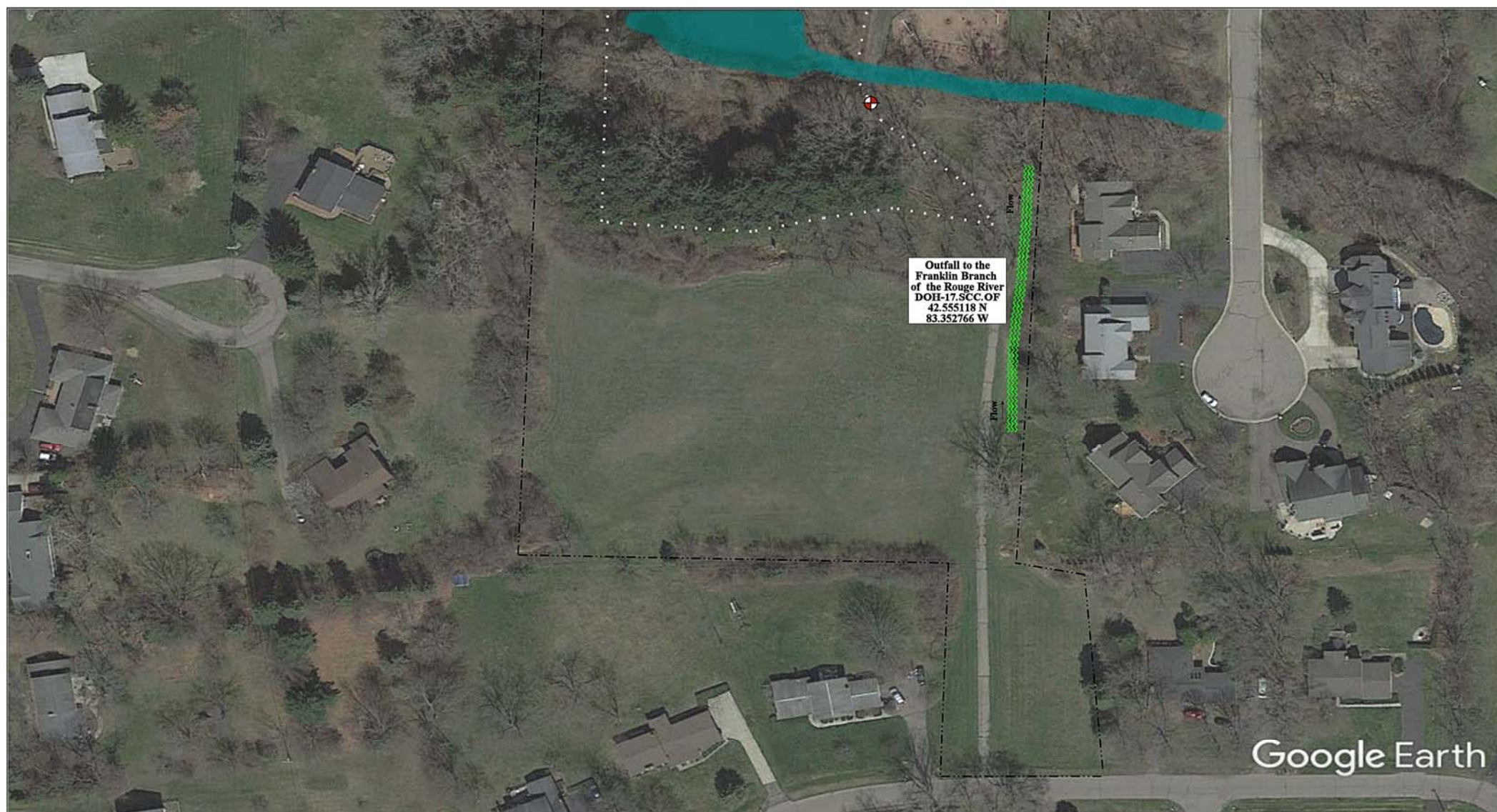
Doherty Elementary School

West Bloomfield School District



37720 Interchange Drive
Farmington Hills, MI 48335
Phone: 248-426-0165
Fax: 248-427-0305

Revision Date:	4/16/2018
Drawn by:	SB
Reviewed:	LK
Page #:	1 of 1
Scale:	Not to Scale



- = Property Boundary
 = Stormwater Conveyance Channel
 = Fence Line
 = Access Point



3675 Walnut Lake Road, West Bloomfield Twp. Michigan 48332

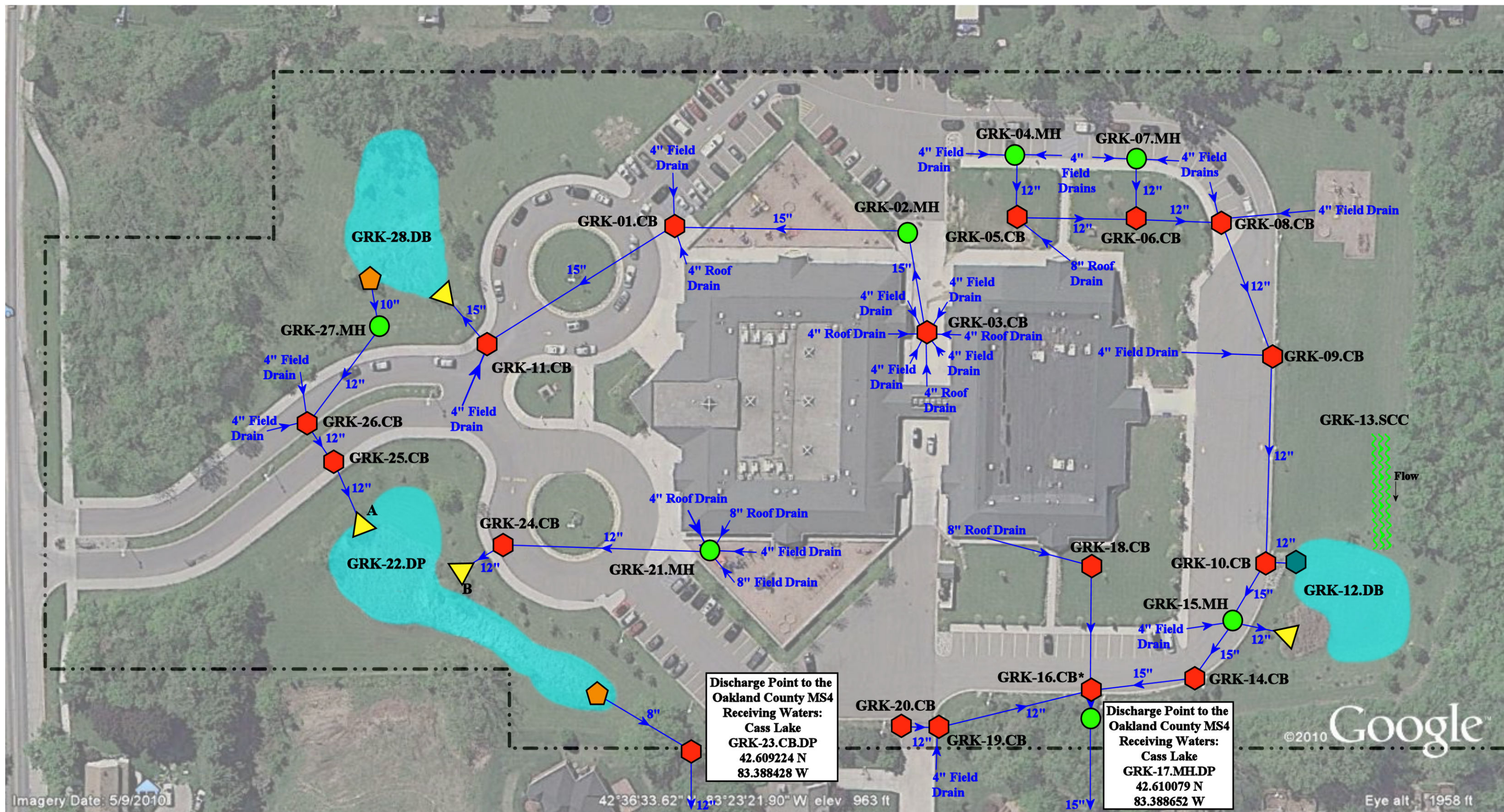
Doherty Elementary School

West Bloomfield School District





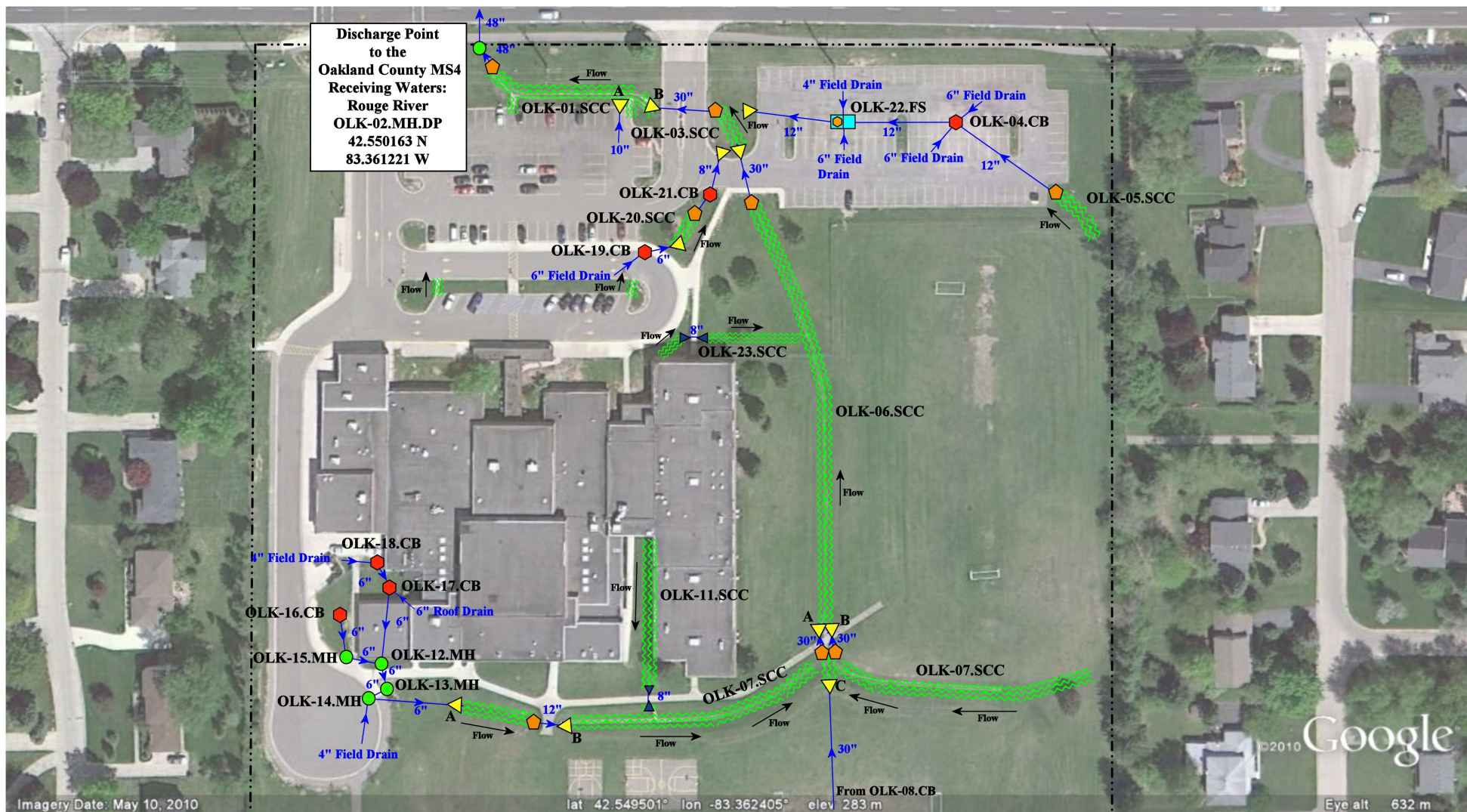
37720 Interchange Drive
Farmington Hills, MI 48335
Phone: 248-426-0165
Fax: 248-427-0305

Revision Date:	4/16/2018
Drawn by:	SB
Reviewed:	LK
Page #:	1 of 1
Scale:	Not to Scale

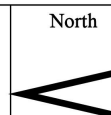


- ⬡ = Catch Basin
- = Manhole
- ▲ = Open Pipe Outlet
- ⬡ = Drainage Receptor
- ⬡ = Stabilized Outlet
- * = Outlet Pipe Gooseneck
- ~~~~~ = Stormwater Conveyance Channel
- ⬢ = Detention Pond/ Detention Basin

5300 Greer Road, West Bloomfield, Michigan 48324				
<div>North</div> <div></div>	Gretchko Elementary School		Date	2/6/2018
	West Bloomfield School District		Drawn By	ACK
	<div></div> <div>37720 Interchange Drive Farmington Hills, MI 48335 Phone: 248-426-0165 Fax: 248-427-0305</div>		Reviewed	LK
			Page #	1 of 1
			Scale:	Not to Scale



- ◆ = Catch Basin
- = Manhole
- ◆ = Drainage Receptor
- ◻ = Flow Splitter
- ~ = Stormwater Conveyance Channel
- ▲ = Culvert
- ▲ = Open Pipe Outlet
- - - = Property Boundary



6000 Orchard Lake Road, West Bloomfield, Michigan 48322

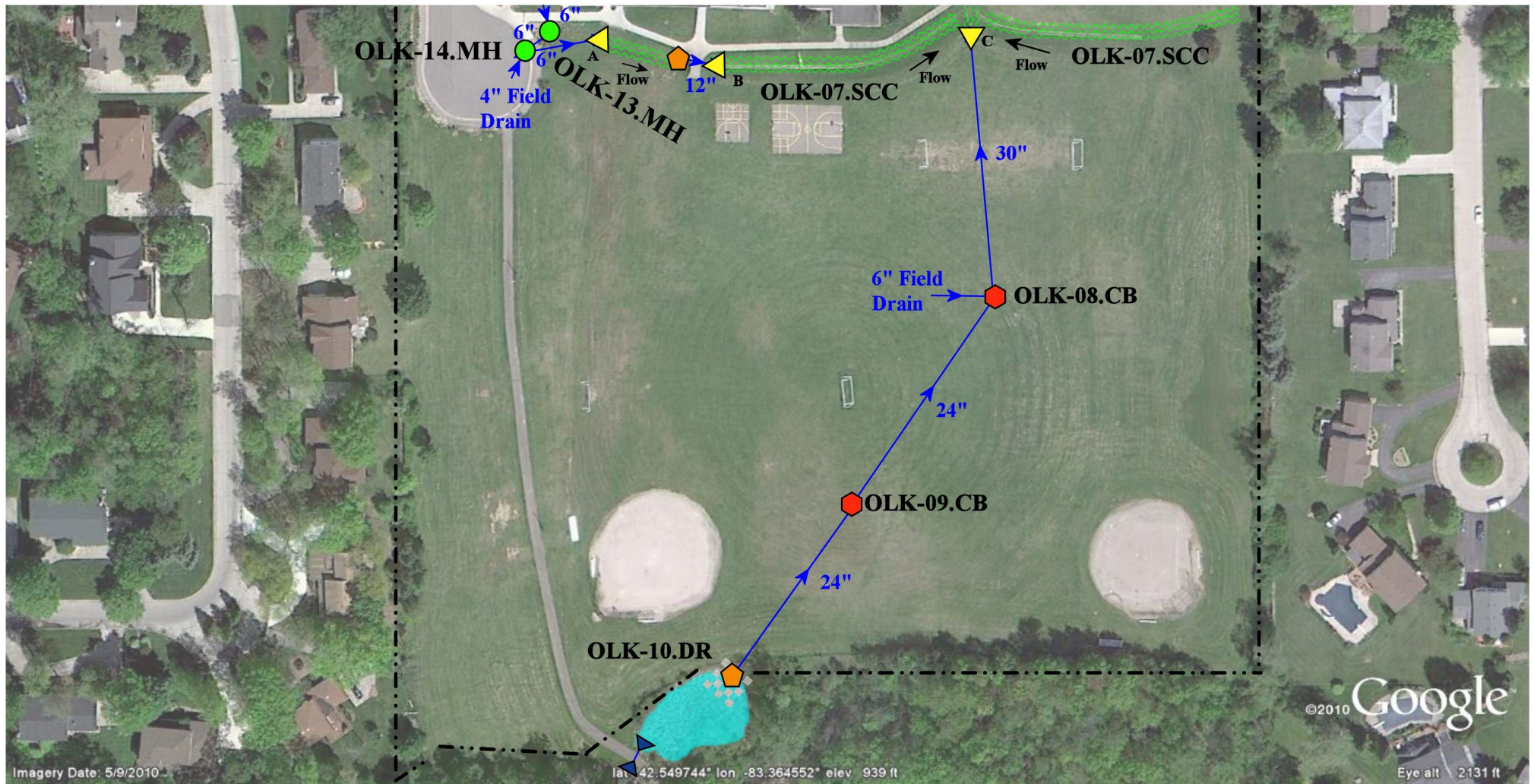
Orchard Lake Middle School

West Bloomfield School District

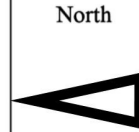


37720 Interchange Drive
 Farmington Hills, MI 48335
 Phone: 248-426-0165
 Fax: 248-427-0305

Revision Date:	4/16/2018
Drawn by:	ACK
Reviewed:	AP
Page #:	1 of 2
Scale:	Not to Scale



- = Catch basin
- = Drainage Receptor
- = Open Pipe Outlet
- = Stormwater Conveyance Channel
- = Rip Rap
- = Offsite Stormwater Wetland
- = Culvert
- = Property Boundary



6000 Orchard Lake Road, West Bloomfield, Michigan 48322

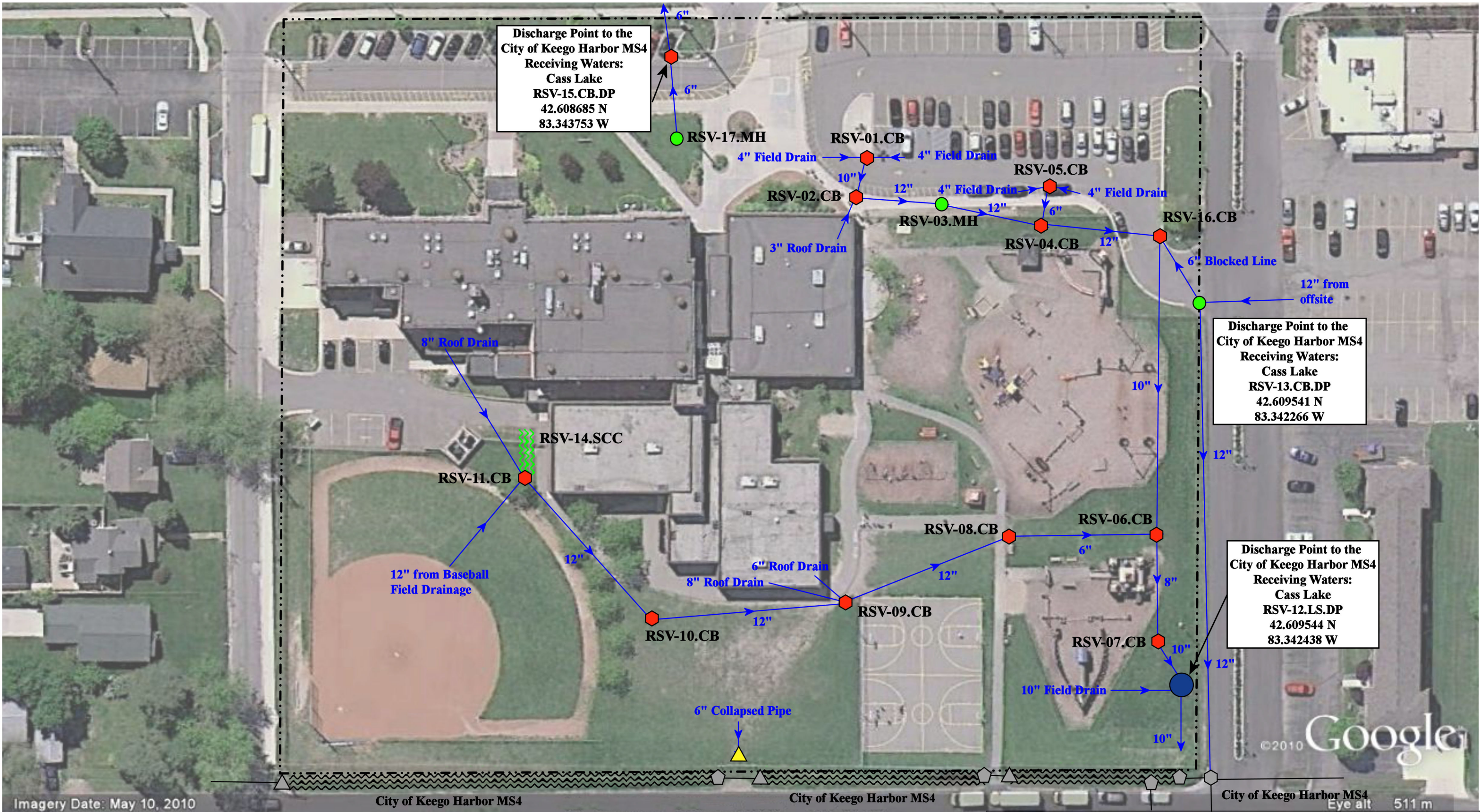
Orchard Lake Middle School







West Bloomfield School District

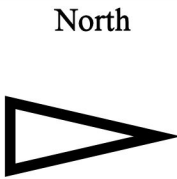


37720 Interchange Drive
Farmington Hills, MI 48335
Phone: 248-426-0165
Fax: 248-427-0305


Revision Date :	4/16/2018
Drawn by:	ACK
Reviewed:	AP
Page #:	2 of 2
Scale:	Not to Scale



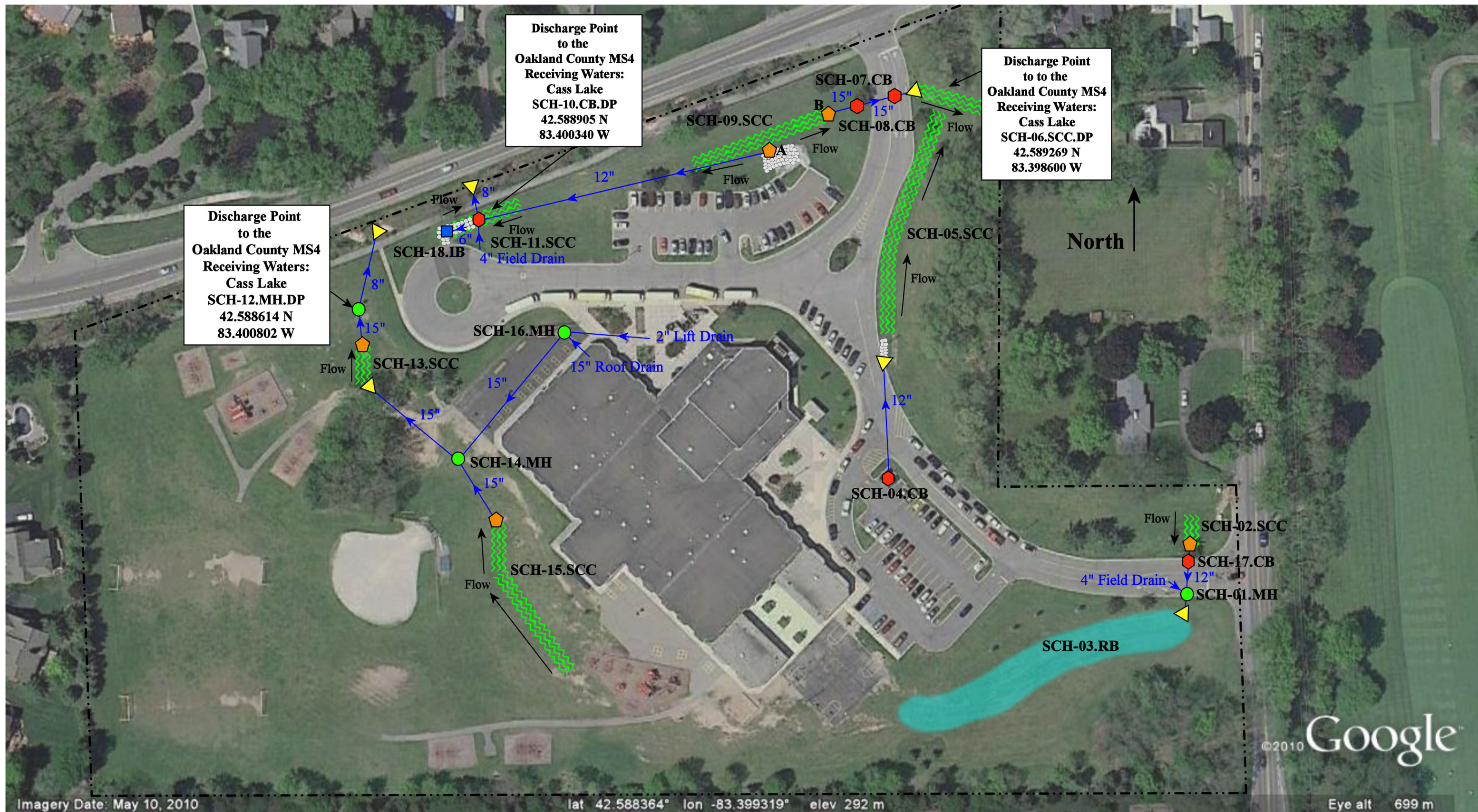
- | | |
|--|---|
|  = Catch Basin |  = Offsite Structures |
|  = Manhole |  = Stormwater Conveyance Channel |
|  = Open Pipe Outlet |  = Storm System Lift Station |



2065 Cass Lake Road, Keego Harbor, Michigan 48320


Roosevelt Elementary School
West Bloomfield School District

37720 Interchange Drive Farmington Hills, MI 48335 Phone: 248-426-0165 Fax: 248-427-0305

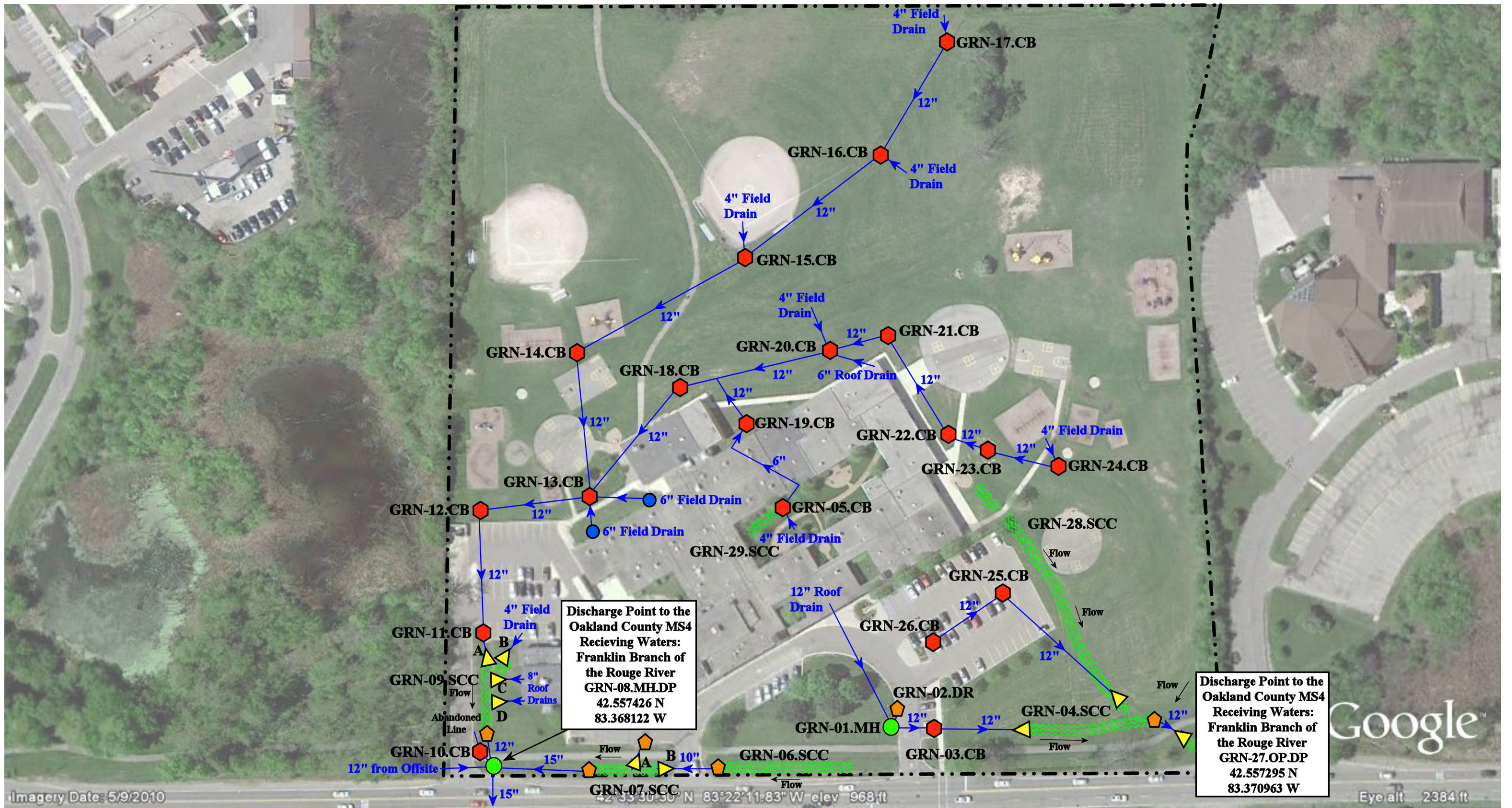
Revision Date :	01/05/2018
Drawn by:	ACK
Reviewed:	Initials
Page #:	1 of 1
Scale:	Not to Scale



- ⬡ = Catch Basin
- ⬡ = Open Pipe Outlet
- ⬡ = Drainage Receptor
- ~~~~~ = Stormwater Conveyance Channel
- ⬢ = Riprap
- ~~~~~ = Retention Basin
- - - = Property Boundary



5959 Commerce Road, West Bloomfield, Michigan 48324		
Scotch Elementary School		Revision Date: 01/05/2018
		Drawn by: ACK
West Bloomfield School District		Reviewed: Initials
	37720 Interchange Drive Farmington Hills, MI 48335 Phone: 248-426-0165 Fax: 248-427-0305	Page #: 1 of 1
		Scale: Not to Scale



🔴 = Catch Basin

🌊 = Stormwater Conveyance Channel

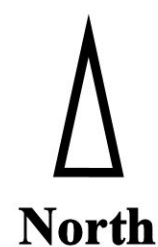
🟢 = Manhole

🟡 = Landscape Drain

--- = Property Line

🟠 = Drainage Receptor

🟡 = Open Pipe Outlet



4500 Walnut Lake Road, West Bloomfield Township, MI 48323

Sheiko Elementary School

West Bloomfield School District



37720 Interchange Drive
Farmington Hills, MI 48335
Phone: 248-426-0165
Fax: 248-427-0305

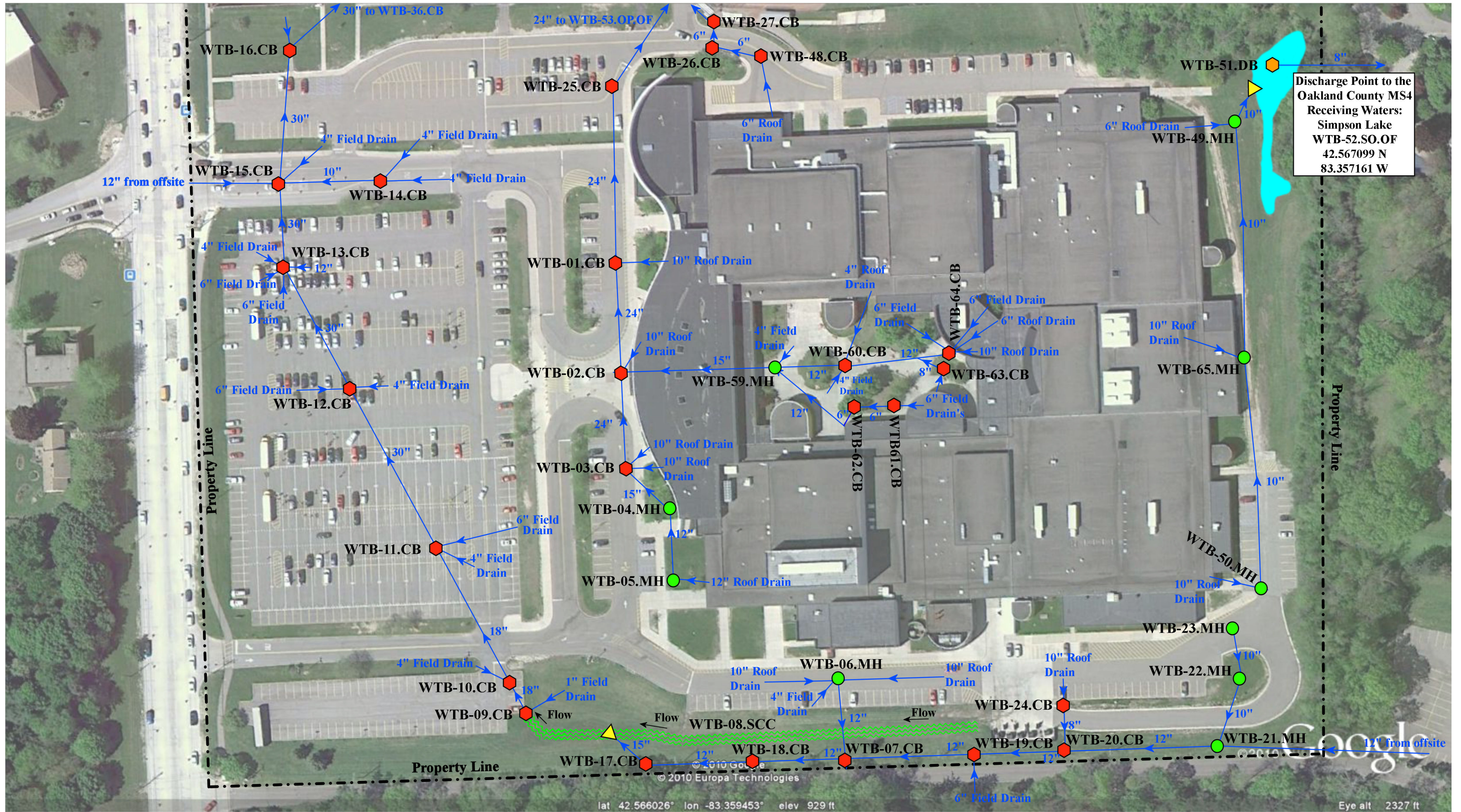
Revision Date: 6/7/2017

Drawn by: JP

Reviewed: LK

Page #: 1 of 1

Scale: Not to Scale




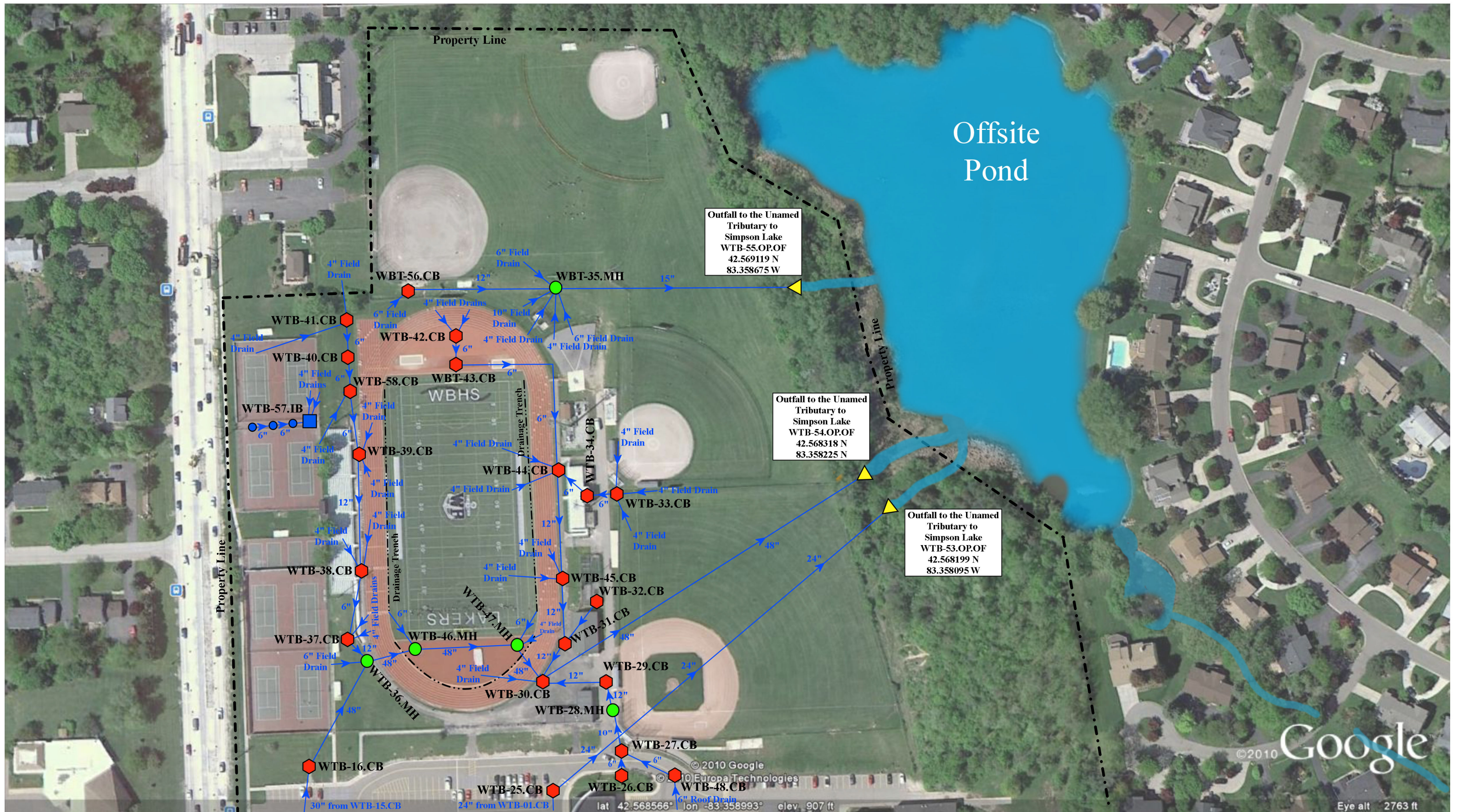
Discharge Point to the
Oakland County MS4
Receiving Waters:
Simpson Lake
WTB-52.SO.OF
42.567099 N
83.357161 W

- = Catch Basin
- = Manhole
- = Stabilized outlet

- = Stormwater Conveyance Channel
- = Open Pipe Outlet
- = Detention Basin



West Bloomfield High School 4925 Orchard Lake Rd., West Bloomfield Twp., Michigan 48323	Date:	5/23/2017
	Drawn by:	SB
	West Bloomfield School District	
	Reviewed:	LK
	Page #:	1 of 2
	Scale:	Not to Scale



- = Catch Basin
- = Manhole
- = Landscape Drain
- = Trench Drain
- = Open Pipe Outlet
- = Infiltration Basin



West Bloomfield High School 4925 Orchard Lake Rd., West Bloomfield Twp., Michigan 48323		Date:	5/23/2017
West Bloomfield School District		Drawn by:	SB
		Reviewed:	LK
		Page #:	1 of 2
		Scale:	Not to Scale