

Spring Branch Independent School District \ \ Houston, Texas \ \ April 25th, 2019



PAT Meeting #04 (3:15pm to 4:45pm)

- Project Recap
- Architectural Process
- Guiding principals
- Priorities
- New Auditorium Layout
- New Auditorium Conceptual Design
- Auditorium Spirit Images Review
- PAT Review
- Next Steps
- Meeting Adjourned at 4:45pm

Project Recap



PAT 01

02-28-2019

KICK-OFF

- Fact Finding Review
- Gather Data
- Establish Guiding Principles



PAT 02

03-18-2019

PROG

- Floor Plan improvements
- Auditorium plan review
- Site Improvements



PAT 03

04-03-2019

SD

- Refine Layout Options
- Acoustical consultant

PAT 04

04-25-2019

SD

- Refine Auditorium Layout Options
- Volumetric exterior concepts

PAT 05

05-16-2019

DD

- Refine Layout Options
- Review Exterior Design

S U M M E R
B R E A K

PAT 06

08-21-2019

DD

- Review Overall Design
- Present Exterior and Interior imagery
- Review finishes

PAT 07

09-04-2019

CD 25%

- Review Overall Design
- Review Finishes

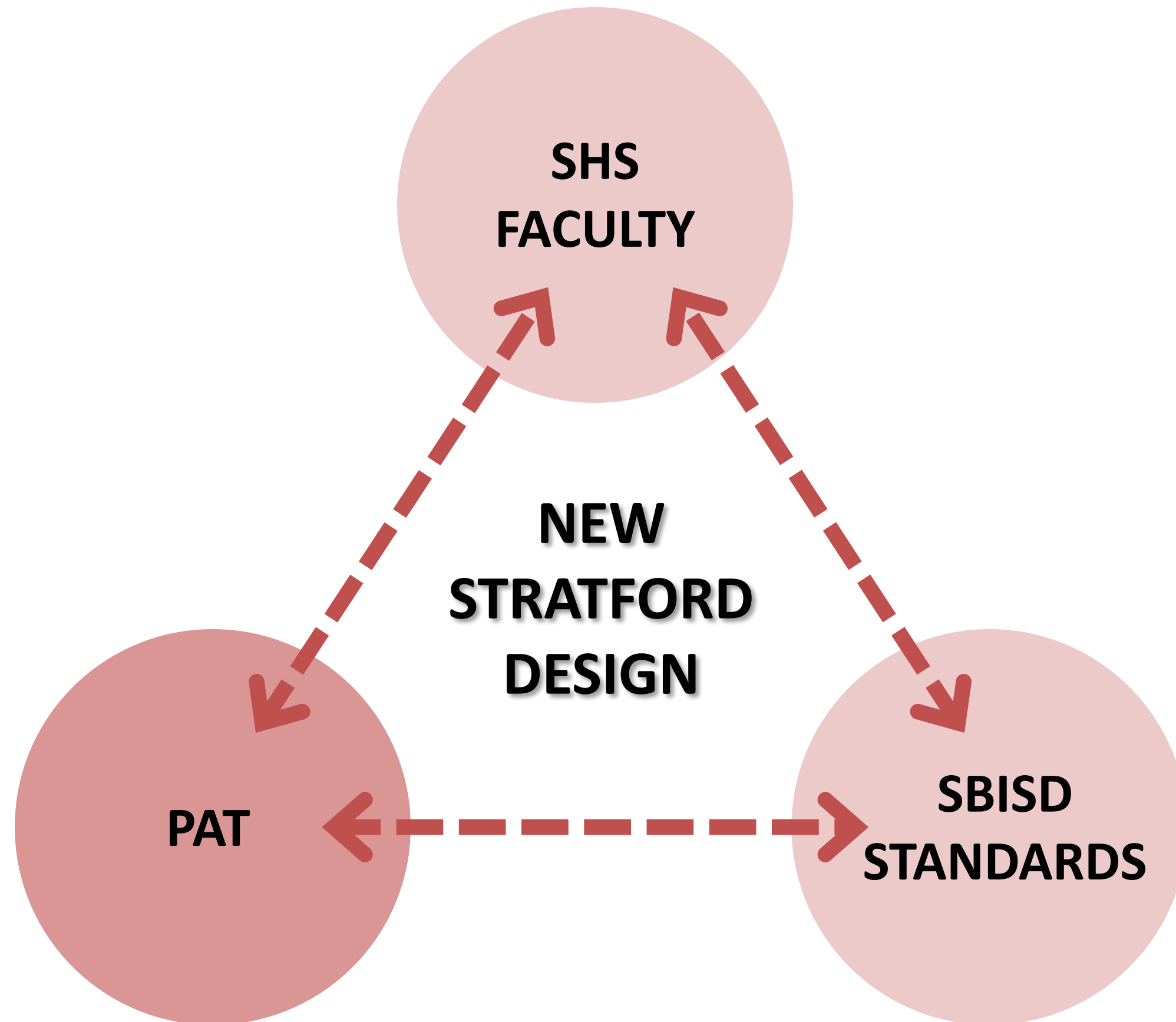
Goal

The goal of the PAT is to ensure that parents, staff and community members have the opportunity to take part in the planning and design of new schools. The PAT members will **serve as communicators** to and from the community during the schematic design and development phases of the project and participate in discussions that will lead to recommendations. The PAT concludes its work once construction begins.

Charge

Each Project Advisory Team's (PAT) members are charged with **providing input into planning and design development** for their school's new construction or major renovation project in the 2017 Bond Program. The PAT will meet as needed throughout the project, from initial planning, through design to the start of construction. Meeting agendas and minutes will be posted on the school's bond project website.

- **New 1,000 seat Auditorium**
- **Mechanical/ HVAC System Upgrades;** for better comfort control in hallways and classrooms
- **Exterior/ Interior Upgrades:**
 - Safety and security (fire alarms, burglar and access control)
 - Meet Education Specifications (replacement of student furniture, evaluate lighting, door hardware, flooring)
 - Exterior power wash, building envelope
- **Site Improvements** (Safety lighting and parking pavement)
- **Roof Systems;** replacement
- **Athletic Upgrades;** (Resurface track, tennis courts, & field refurbishment. Upgrades will be addressed as needed)





- Involved **Community**
- School is a **Community** hub
- No **meeting spaces** on campus
- Desire **Openness**
- **Way-finding** is not organized
- No **open** look and feel
- Remove lockers
- Balance **true needs** of SHS



- **Playhouse** season ticket holders
- **Auditorium** is central to campus
- Need an **LGI**
- Need **offices** and **storage**
- **Floating** teachers
- **Secure** main lobby
- Feels too **institutional**
- Create **Counselor** suite

Meeting Minutes

Project Name: Stratford High School Renovations
Project Number: 18148
Owner: Spring Branch ISD
Meeting Description: SHS - Meeting with Principal #2

Meeting Date and Time:
Meeting Location: Stratford HS
Owner's Designated Representative: Kris Drasche
Report Date and Author: 1/22/2019 Max Buja

Stratford HS Campus Review

1. Introductions
2. Travis, Kris – P&C
3. Chad, Principal
4. D. White, Counselor
5. Pam, Assoc. Principal
6. Lynne, Director SB Institute
7. Valerie, 9th Gr Principal
8. David, Director Tech Theater
9. Kristi Schaper, CTE Teacher
10. William Hall, Math & Engineering
11. Shelby, Librarian
12. Project Scope-Roof, Turf Field, Auditorium, Major Renovations & Interiors work.
13. Classroom Furniture (Future Separate Project).
14. Current 750 seat auditorium. Request and need to keep current auditorium seating during construction.
15. 500 participants in current programs.
16. Previous events there have had folding chairs brought inside the space to allow for additional seating.
17. Plays are "extra-curricular" because of other programs that students participate in.
18. Heavy participation from community.
19. Theater, Orchestra
20. Several hundred season ticket holders.
21. Gala fundraiser this week for Theater Booster Club (multiple enormous events) compete against varsity football events.
22. Auditorium is central to campus use and highly used.
23. UIL hosted events – every UIL events for one act plays and large events.
24. No current multipurpose space at SHS. Use auditorium, library, or dining space therefore auditorium is commonly occupied.
25. Parent meetings that coincide with production, rehearsals, or other events. The set is there and this results in limited usable space within auditorium.
26. Medium sized space ideally would house 100-150 people (multi-use space).

ce of CTE but has been asked to leave – he has been moving around
and the Ag Center. ROTC, Culinary, Film, Cosmetology, Film Making,
antage of all at Guthrie Center.
for engineering dept.
d requires replacement of select equipment.
ve loop was added in previous renovation and while small made a

as – ramp is on the East side only 7 buses used limited bus for main
buses throughout the day for other programs will use the front
rop off on Fern Drive.
ed except front door (as of last year) so front is active and students
ad to walk around building to front door.
problematic – no temporary classrooms except for 3rd rubber gym
al needs. To get to rubber gym you have to go outside then back
hat line to protect pedestrians from main building out to the 3rd
unlocked. Canopy would be wanted/helpful. All PE classes are
PE students are affected.
th a gap in between (one class)
rpose room, frequently used, commonly shut down. Technology
eacher luncheons, students eat.
library varying use but up to almost 100. Fire Marshal limit at 72.
testing, and regular testing.
ias 3 classrooms and a small work based utility area. Pretty old and

or severe autistic only at select campuses throughout district.
ed.
1, of varied age, and poorly supports student useage and function.
osed off with many doors and hallways constricting spaces.
hout campus to help wayfinding, campus pride, organization.
s to make the school less institutional
tc. scattered throughout building.
ar, 90 degree turns can we "SOFTEN" the campus?
it SHS:
ited / LGI for larger group
pace, & Storage Added

nd Intimate Auditorium Integrated in Campus (Not on an Island)
ig Auditorium – capture smaller targets and needs throughout

- Better clearly identify where you enter Stratford. Large auditorium with 3 larger group spaces.
- Need added storage. Get rid of or use multiple balconies.
- Classrooms and LGI added.

On behalf of the entire **PRK** Team, we thank you for this opportunity!

"Committed to Learning. Working Together. Enriching Lives." - SHS

Stratford High School Additions and Renovations

Rating of the Fact-Finding Items

<u>A</u> Heavy Community involvement	<u>B</u> School lacks gathering areas
<u>A</u> School is a community "hub", constant activity on campus	<u>A</u> Incorporate large and medium instructional areas
<u>A</u> Auditorium central to campus, highly used	<u>B</u> Desire openness and interconnectedness across campus
<u>A</u> Performing arts program very popular, equal to football	<u>A</u> Provide flexible and collaborative areas
<u>B</u> Several hundred season ticket holders for the Playhouse	<u>A</u> Create spaces that harbor ownership and responsibility
<u>B</u> UIL hosted events in the Auditorium	<u>B</u> Provide flexible furniture to enhance collaboration
<u>A</u> Front entry lacks presence towards street	<u>A</u> Lack storage across campus (see below)
<u>A</u> Back entry is heavy used (students), front only visitors/ parents	<u>A</u> Need additional admin offices
<u>A</u> Balance security with campus openness and student flow	<u>A</u> Create counselor suite
<u>A</u> School doors locked all day	<u>A</u> Remove lockers, underutilized (50 to 75 units used)
<u>A</u> No secure vestibule	<u>A</u> 8 teachers are currently "floating"
<u>A</u> 3rd gym/ training room exterior access only	<u>C</u> SBAI (Spring Branch Academic Institute) specific needs
<u>B</u> School lacks clear way-finding	<u>A</u> Several HVAC issues across the campus
<u>Define school academies - not in this scope</u>	<u>A</u> Technology upgrades needed across campus
<u>B</u> Parents and visitors "lost" in campus	
<u>A</u> STORAGE FOR SPORTS (STUDENTS EQUIPMENT) ON MAIN FLOOR (Eg. GOLF CLUBS) - THEY HAVE TO USE THEM AT THE END OF THE SCHOOL DAY.	
<u>A</u> Accessible to all (auditorium / cafeteria etc)	
<u>B</u> Better parking out in the front of the building. There is never open parking for parents for pick up.	
<u>A/C</u> Fence around parking areas (Jr/sr lots)?	
<u>B</u> Staircases - some open / some closed. ↳ better staircase in the cafeteria area - would look & function so much better	

Additional Comments

A Technology & electrical etc

go together

perhaps join storage / make a new space with the third gym (make it secure)

use to create classrooms

A "no" b/c they could "go anywhere" comment
"If SBAI does not utilize the STS staff why do they not use the space @ SBAI? There is space (or was) at that campus & then the students are with their age peers & bus costs. Just curious..."

Priority Legend

On the left of each Fact-Finding statement, please rate from A to B (A being the highest priority and C being the lowest priority)

A = High Priority
B = Medium Priority
C = Low Priority

PRK

11 Greenway Plaza
22nd Floor
Houston, Texas 77046

800.938.7272
PRK.com

WHAT MAKES SHS^{SI} STRATFORD?

- COMMUNITY/FAMILY
"BLOOD RUNS GREEN"
- SUPPORT
TEACHERS/STAFF/PARENTS
COMMUNITY
- SMALL TOWN IDENTITY
ALUMNI GROWTH/PRESENCE
*WELCOMING BACK
- FAMILY TIES THROUGHOUT SBISD
- APPROACH: LONG TERM, LONG LASTING
- GOING TO HAVE LUNCH NEXT YR → SPACE

* ^{STRAT} CAREFUL w/ UTILIZATION OF CIRC.
SPACES - HEAVILY TRAFFICKED STUDENTS,
NOT A "ROOM" BUT GRAPHICS/FLEXIBILITY?

* GET CONDITIONED AIR INTO CIRC.
SPACE CURRENTLY NOT

* LIBRARY SPACE CAN BE RE-PROGRAMMED
OR MORE EFFICIENTLY USED AS FLEX
& COLLABORATION SPACE - MORE COST EFFECTIVE?

* SNACK BAR NOT UTILIZED - STORAGE
NOW - CAN BE RECAPTURED.

* LAYERED SAFETY
CAMPUS WIDE - INSIDE & OUT

* REVISE / REMOVE / LESS EMPHASIS
ON "SPECIAL FOCUS ON FINE ARTS"
(GUIDING PRINCIPLE)

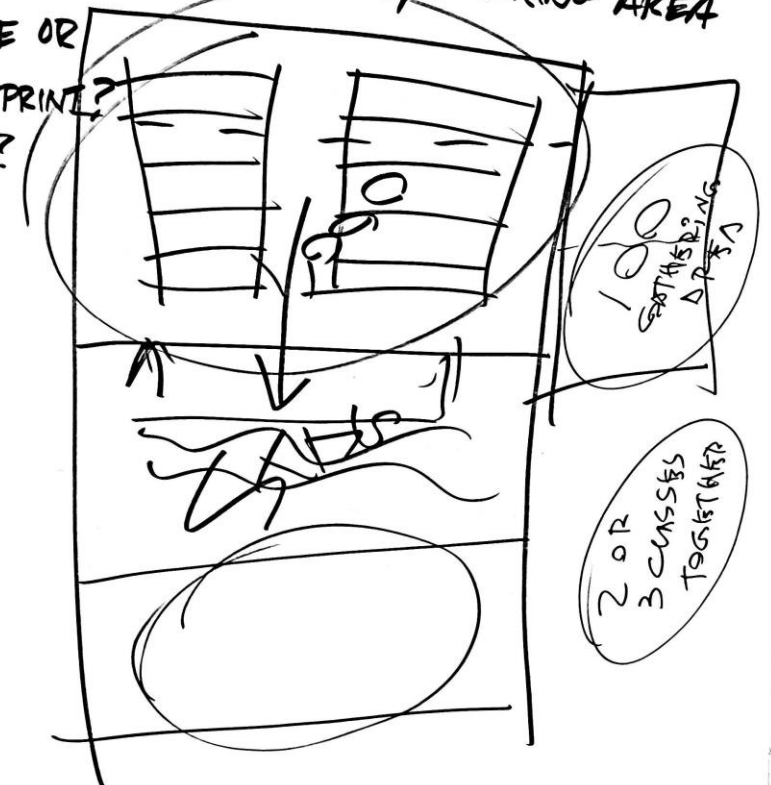
* SEPARATE ACADEMIES FROM "WAY-FINDING"
SIGNAGE VS SPACES & COLLABORATION

* ATHLETIC IMPROVEMENTS IDENTIFIED

* IDENTIFY BOND SCOPE PREREQUISITES
w/ PRIORITY SUMMARY

* AUDITORIUM REPLACEMENT VS 2ND "NEW"
BUILDING SET IN STONE? BOND ITEM

* LOOK AT SECONDARY SMALL LGI / GATHERING AREA
w/ SAME OR
SIM. FOOTPRINT?
OCC. ± 100?



STRATFORD PAT 3

- VESTIBULE SEEMS VERY SMALL
- VESTIBULE IS STUDENT GATHERING AREA.
- IF WE ARE MAKING SECURE VEST... CAN WE REMOVE BACK WALL? RE: 1017
- PEOPLE GO STRAIGHT TO ATTENDANCE & CLINIC INSTEAD OF VISITORS TAG.
- ENCLOSE ONTO EXTERIOR TO GAIN VESTIBULE SPACE?
- RESTROOMS IN ADMIN. AREA ARE USED BY EVERYONE. MAKE THEM GENDER NEUTRAL.
- MAIL ROOM IN ADMIN AREA CAN GO ON 2ND FLOOR

- RECEPTION MORE OPEN? *FRISCO
- CAN WE JUMP FENCE?
- CAN RAMP BE INTEGRATED ON STAIRS?
- 1 HR LUNCH
- 1 TO 1 DEVICES
- CAFETERIA USED FOR END OF YEAR BANQUETS.
- PRESENTATION AREA IN STUDENT COMMONS.
- OPERABLE PARTITIONS? RE: JARED SKETCH
- CAFETERIA... IS GATHERING SPACE. ~~FARE NOT TO SEE~~
- ORCHESTRA WITH AUDITORIUM
- PIT VS STEP DOWN...
- STUDY VIEWS

~~OTHER~~ TICKET BOX LOCATION
OF A LOT OF ELDERLY

Do you approve of the security layout for the main lobby entry and the 3rd gym secure area?

0 2 3

Yes



91%

No



9%

Do you approve of the layout for the Student commons?

0 2 4

Yes



75%

No



25%

Do you approve of the layout for the New Auditorium?

0 2 4

Yes



17%

No



83%

Are we going in the right direction for the Stratford High School Additions and Renovations Design after PAT #3?

0 2 3

Yes



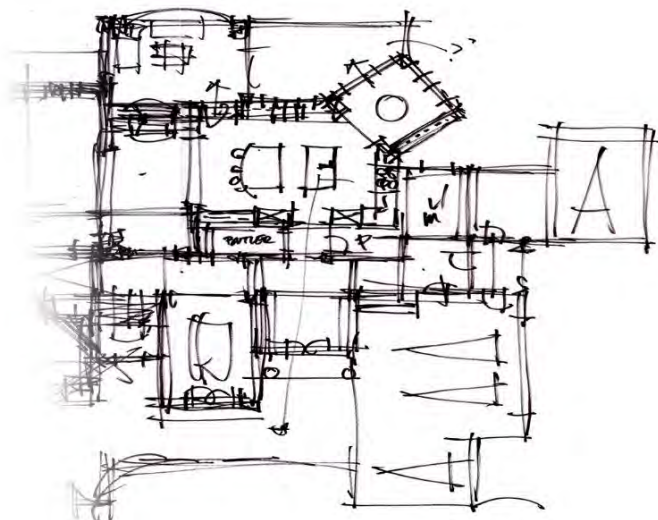
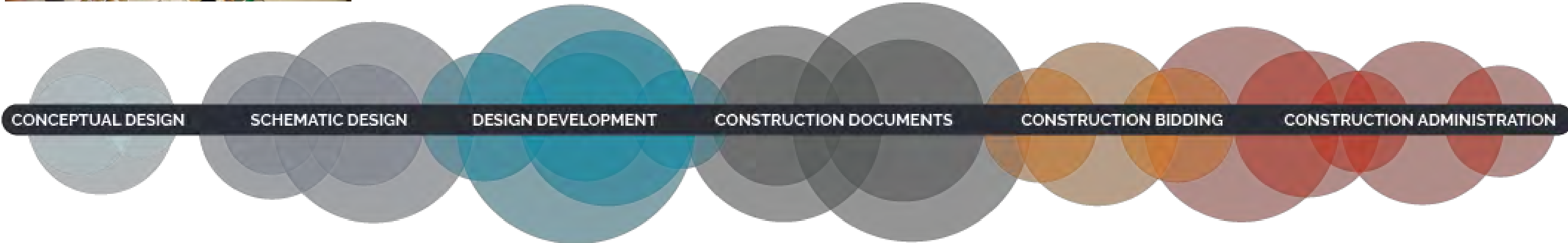
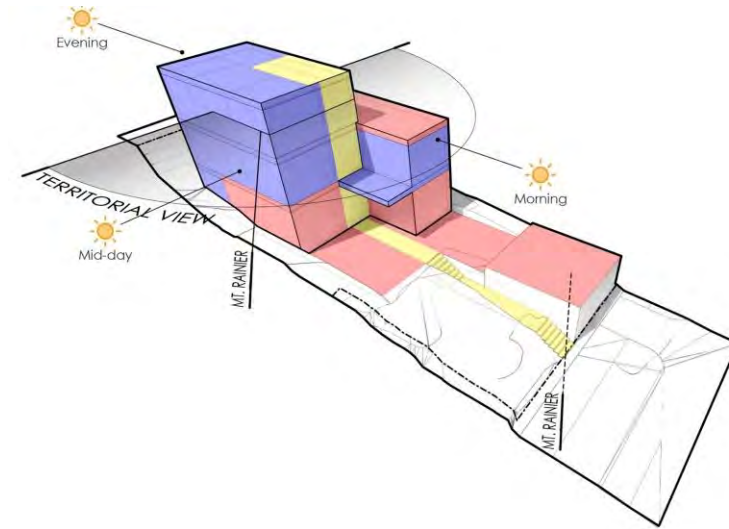
83%

No



17%

Architectural Process



Guiding Principles

Stratford High School Additions and Renovations

Stratford HS One Word “Word Cloud”



Community Involvement for Success

Neighborhood Institution that offers opportunities to all and hosts a wide arrange of community engagements.

An Environment of Academic Excellence

Uphold and evolve higher educational performance through the introduction of versatile and flexible gathering areas.

A Place for Everyone

Create an environment that celebrates everyone and provides accessibility to all.

Safety Fosters Success

A secure campus that fosters an environment where students, teachers and staff can succeed.

A Culture of Tradition and Pride

Maintain the traditions that provide a sense of pride and honor to the school and community.

Priorities

Priority A

1. Campus Security
2. HVAC/ Tech Campus Enhancement
3. Gathering Areas, Openness and Interconnectedness
4. New Auditorium/ Community “Hub”

Priority B

1. Remove Lockers
2. “Floating” Teachers Issues
3. Lack of Storage
4. Counselor Suite

Priority C

1. Additional Admin Offices
2. Way-finding/ Academies
3. Fix Stairs and Elevator
4. SBAI needs

PAT #03

- 1. Main Entry Vestibule/ 3rd Gym
Secure Area**
- 2. Student Commons**
- 3. New Auditorium/ Repurposed
Areas**

PAT #04

- 1. Classrooms/ Academies**
- 2. Flex/ Corridors**
- 3. Offices/ Counselors**
- 4. New Auditorium Diagrams**
- 5. New Auditorium Layout**
- 6. New Auditorium Conceptual Massing**

PAT #03

1. Main Entry Vestibule/ 3rd Gym
Secure Area
2. Student Commons
3. New Auditorium/ Repurposed
Areas

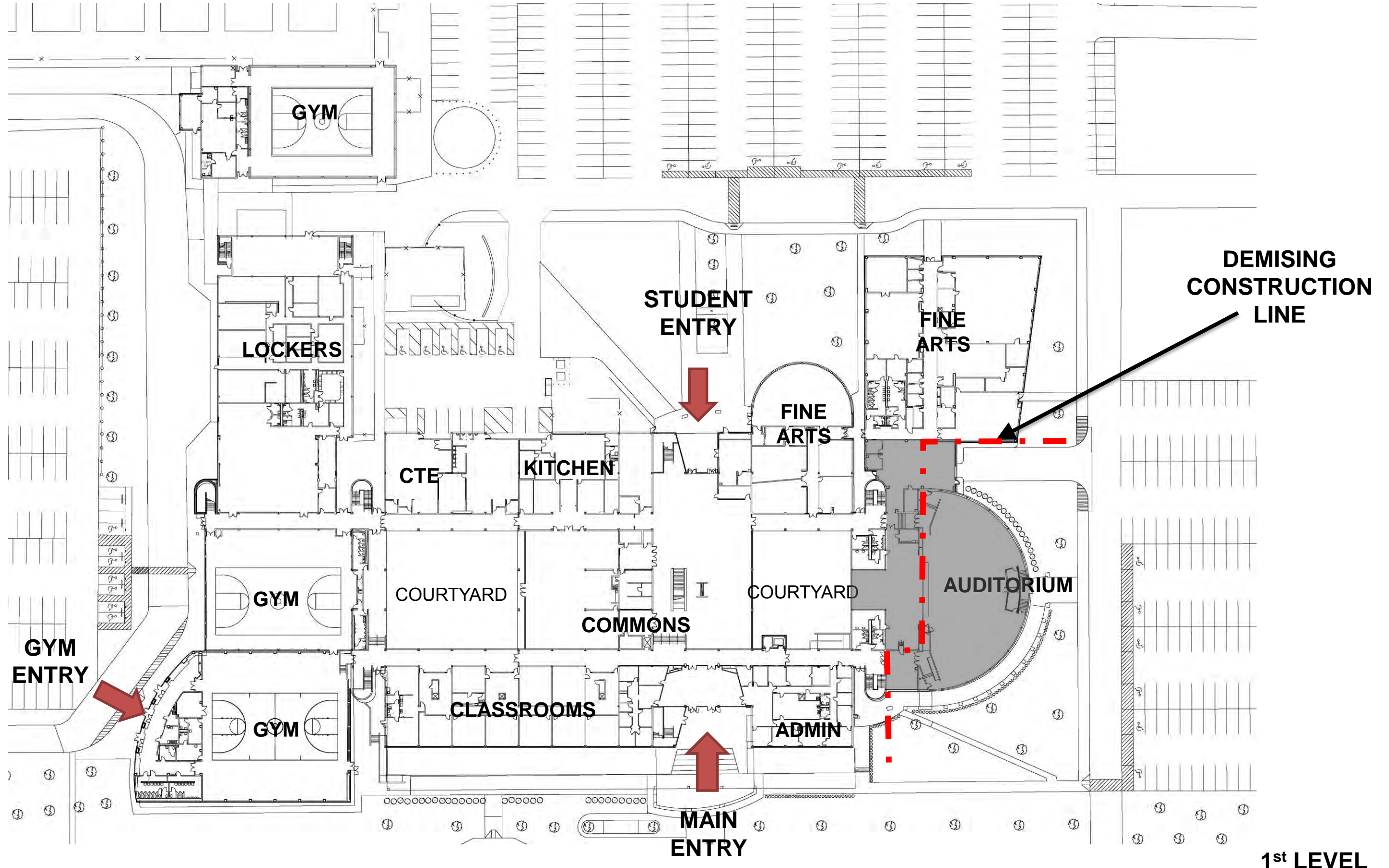
PAT #04

- ~~1. Classrooms/ Academies~~
- ~~2. Flex/ Corridors~~
- ~~3. Offices/ Counselors~~
4. New Auditorium Diagrams
5. New Auditorium Layout
6. New Auditorium Conceptual Massing

New Auditorium Layout

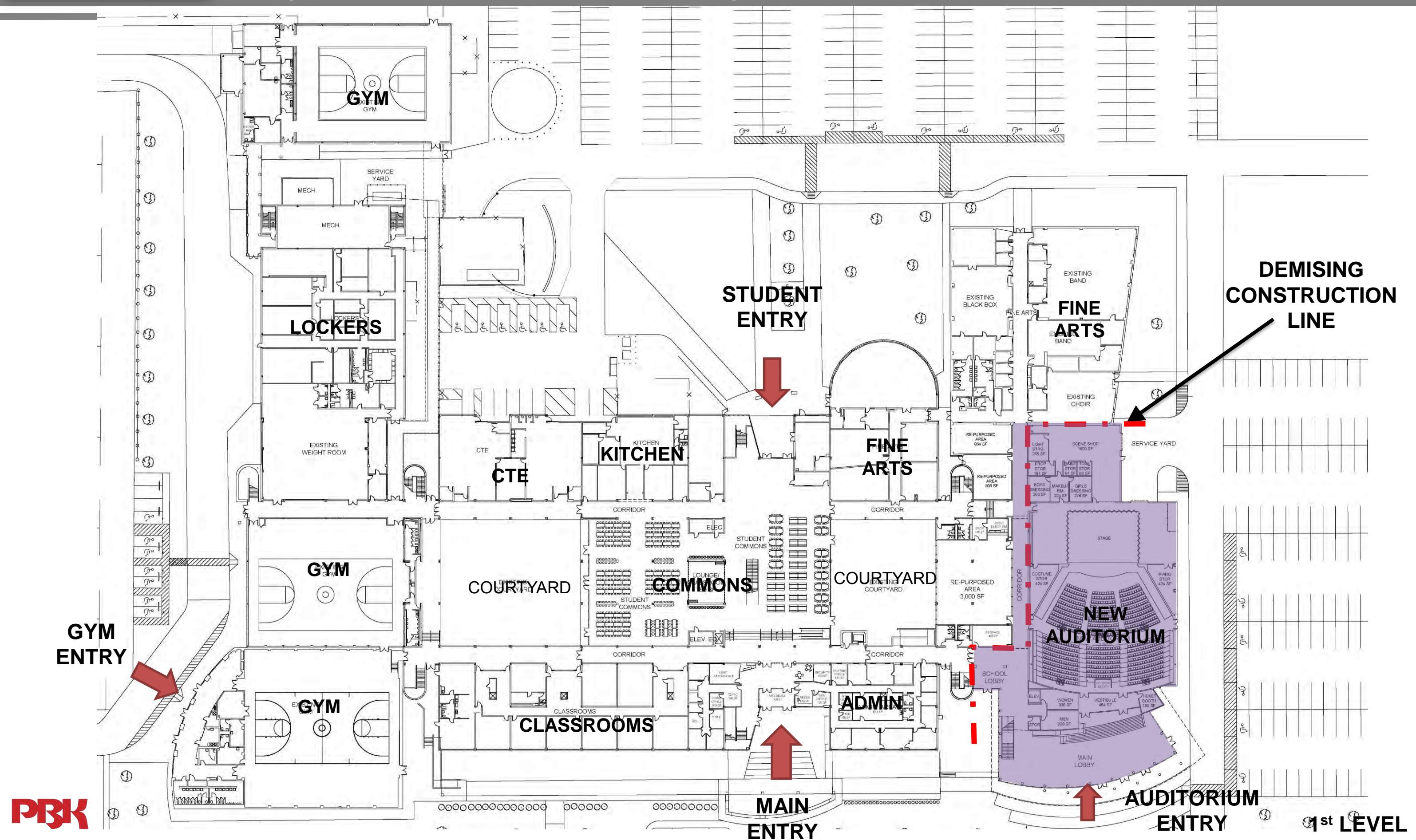
Stratford High School Additions and Renovations

Existing 1st Level Floor Plan



Stratford High School Additions and Renovations

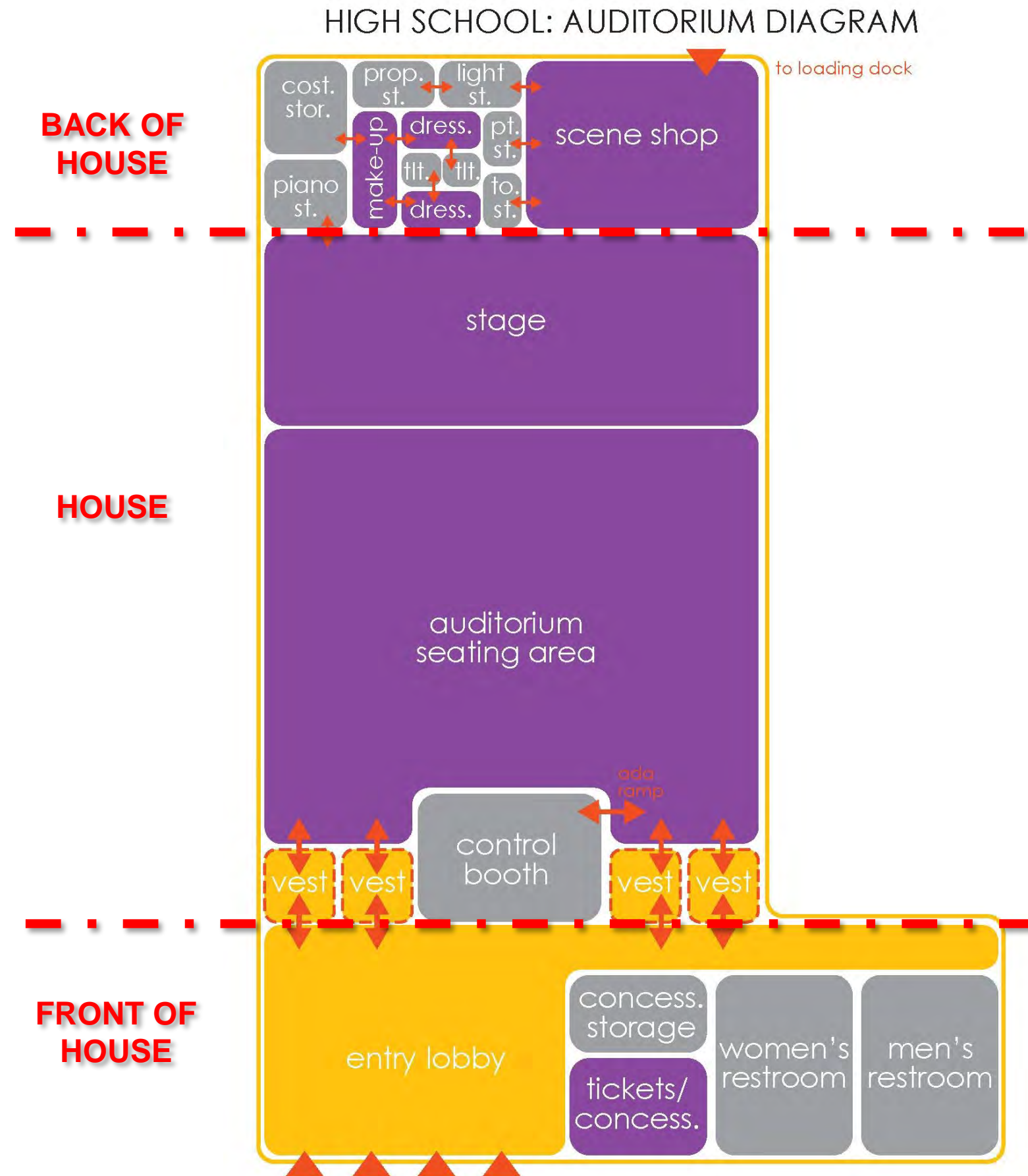
Proposed 1st Level Floor Plan Layout



Stratford High School Additions and Renovations

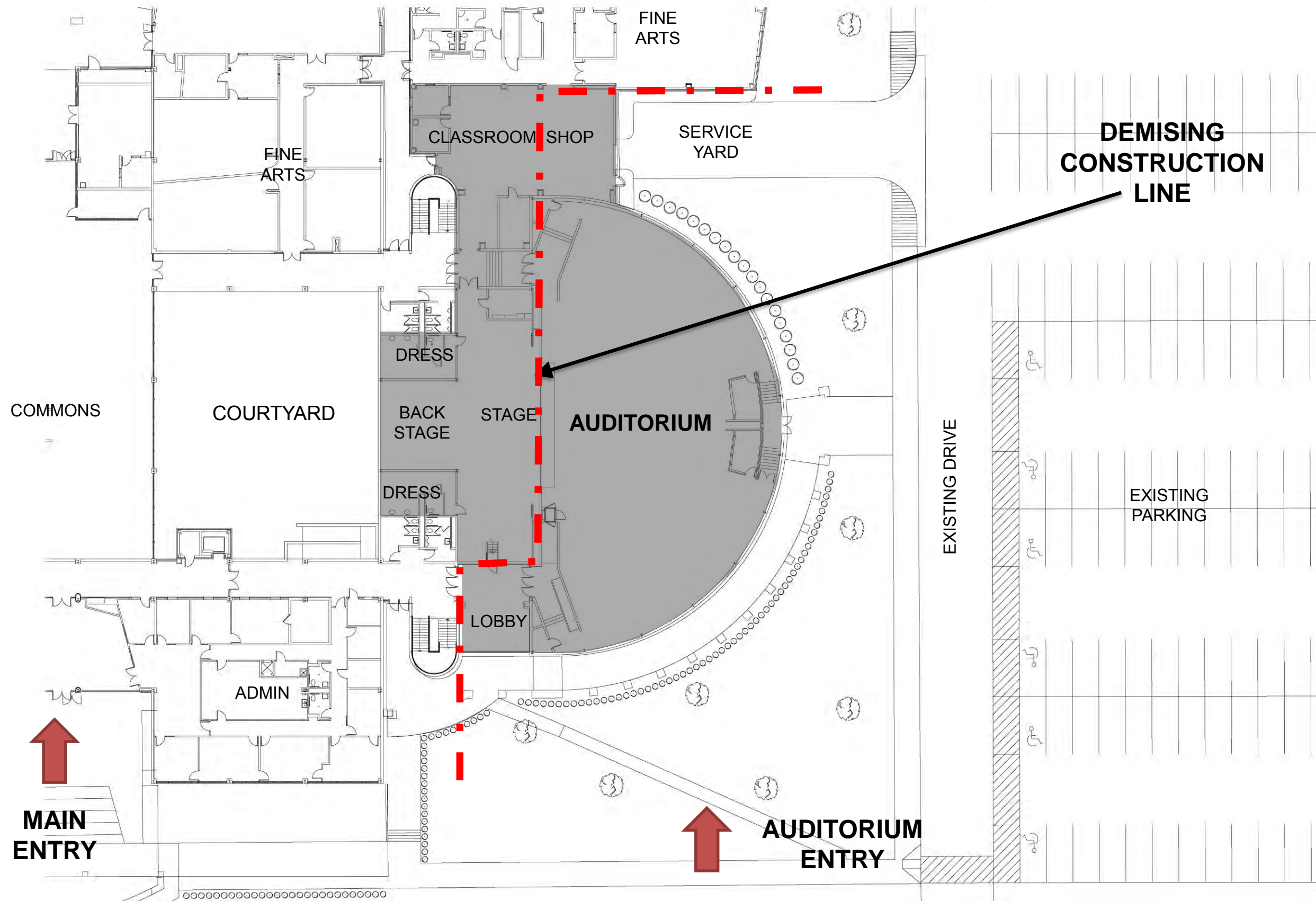
SBISD Ed Specs – High School Auditoriums

Space/Function
Auditorium
Entry / Lobby
Ticket Booth / Concession
Ticket Booth / Concession Storage
Men's Restroom
Women's Restroom
Vestibule
Control Booth Stair
Control Booth - ADA Lift
Lights - Left
Control Booth
Lights - Right
Seating Area
Stage
Scene Shop
Tool Storage
Paint Storage
Light Storage
Prop Storage
Make-up
Girl's Dressing
Girl's Toilet
Boy's Dressing
Boy's Toilet
Costumes Storage
Piano Room
Mechanical Area
Mezzanine - Mech Rm
Mezzanine Storage
Mezzanine Mechanical Space
Mezzanine Boiler Space
Subtotal Auditorium



Stratford High School Additions and Renovations

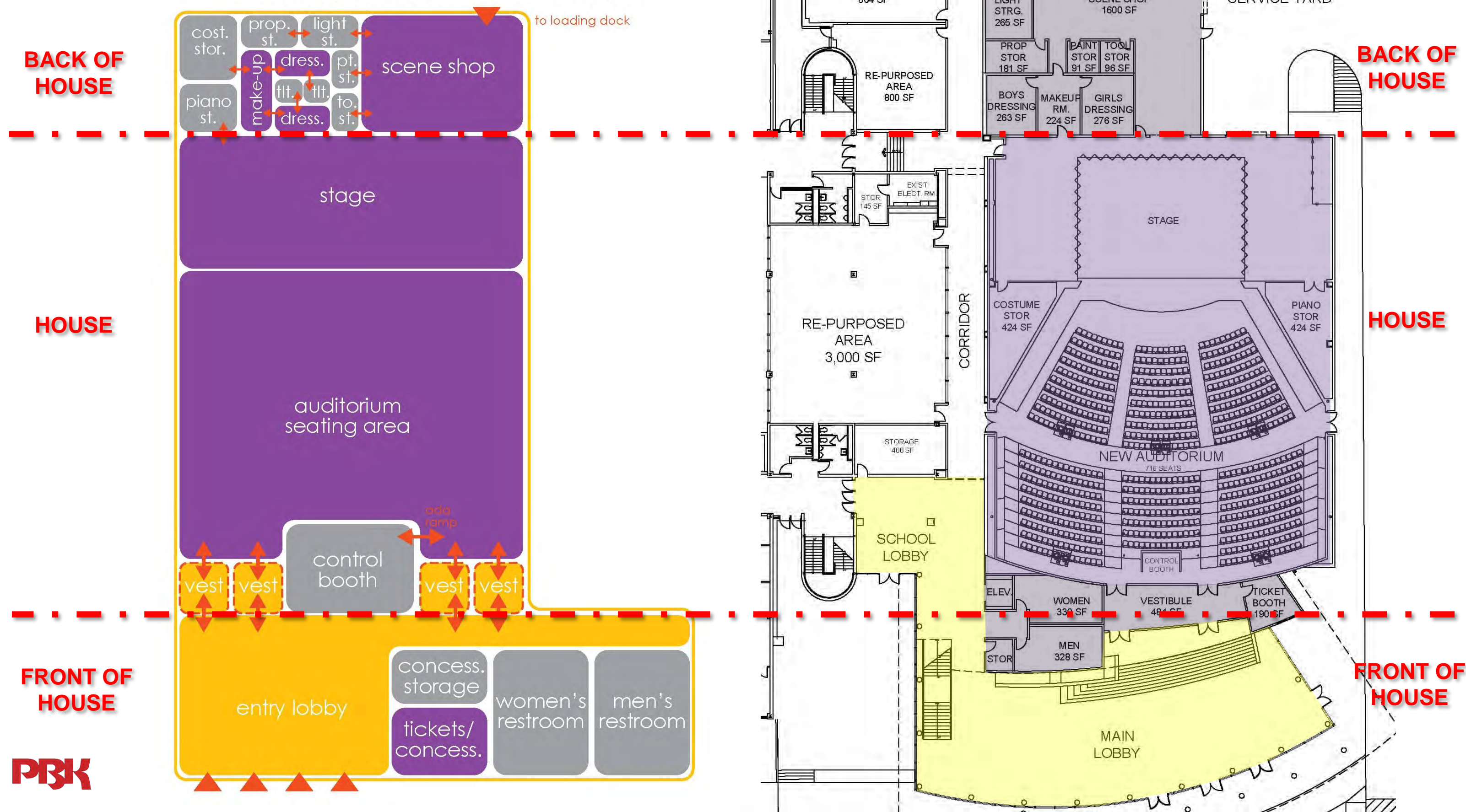
Existing New Auditorium



Stratford High School Additions and Renovations

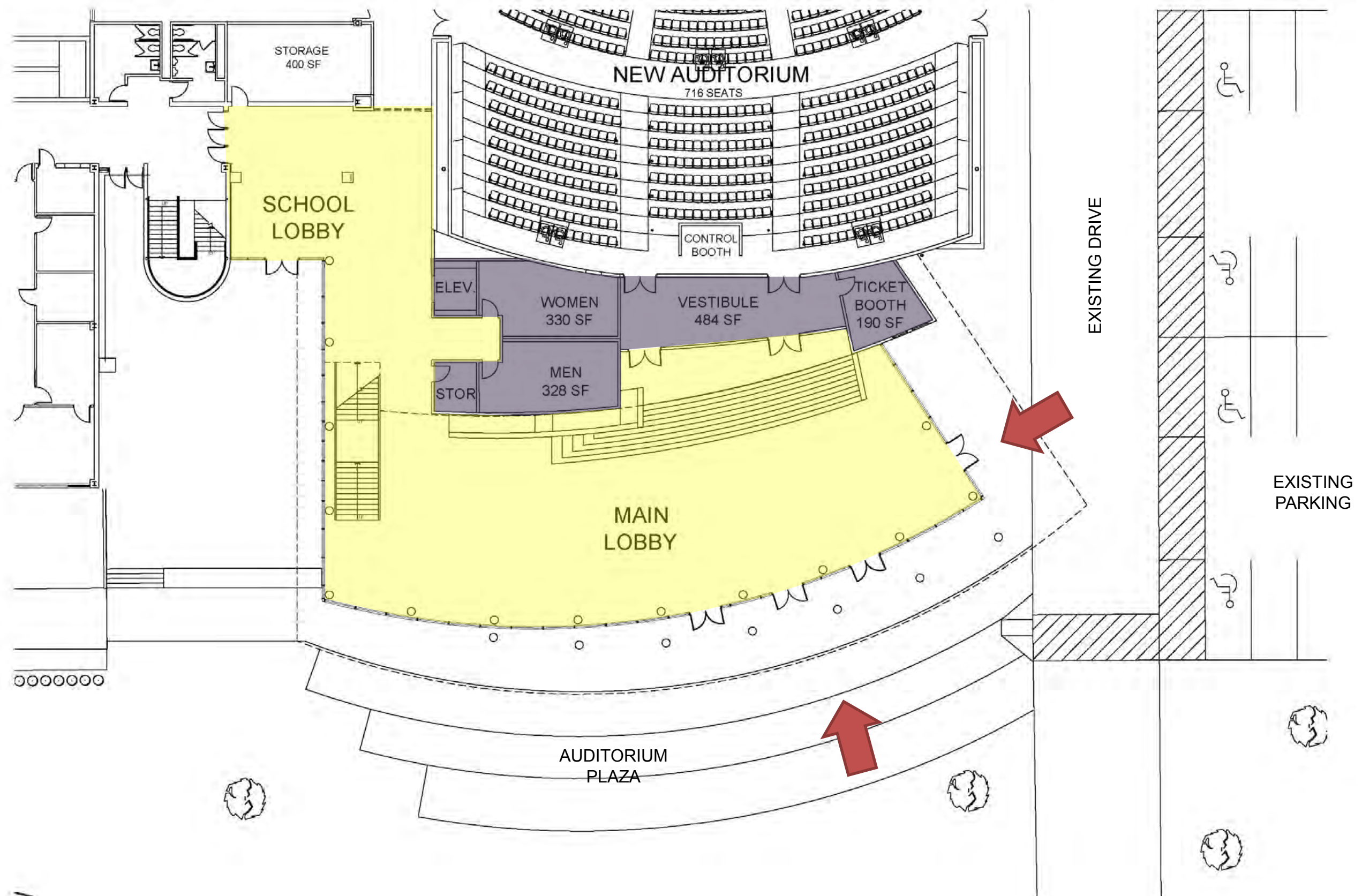
SBISD Ed Specs – High School Auditoriums

HIGH SCHOOL: AUDITORIUM DIAGRAM



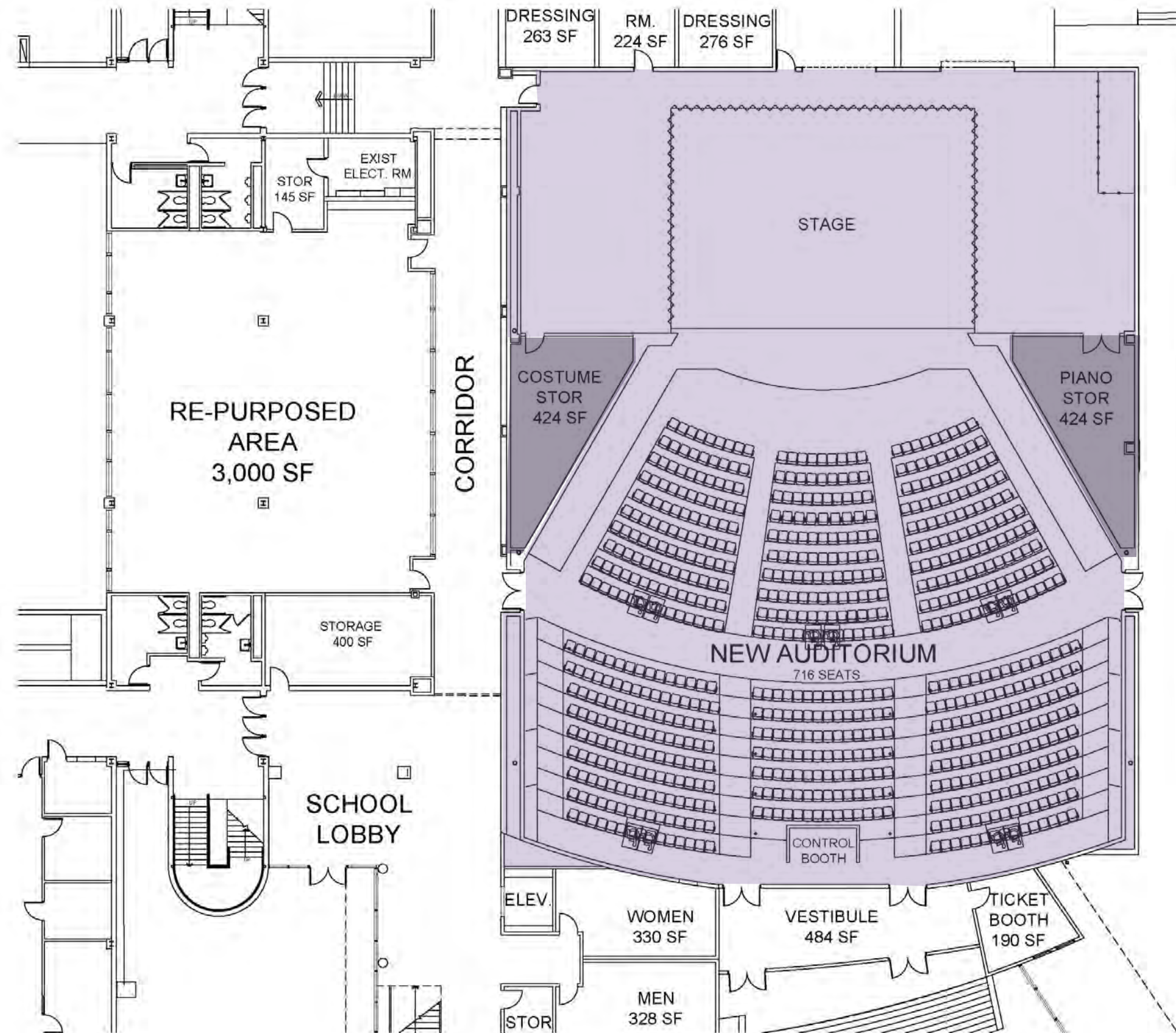
Stratford High School Additions and Renovations

Proposed Floor Plan Layout – Front of House



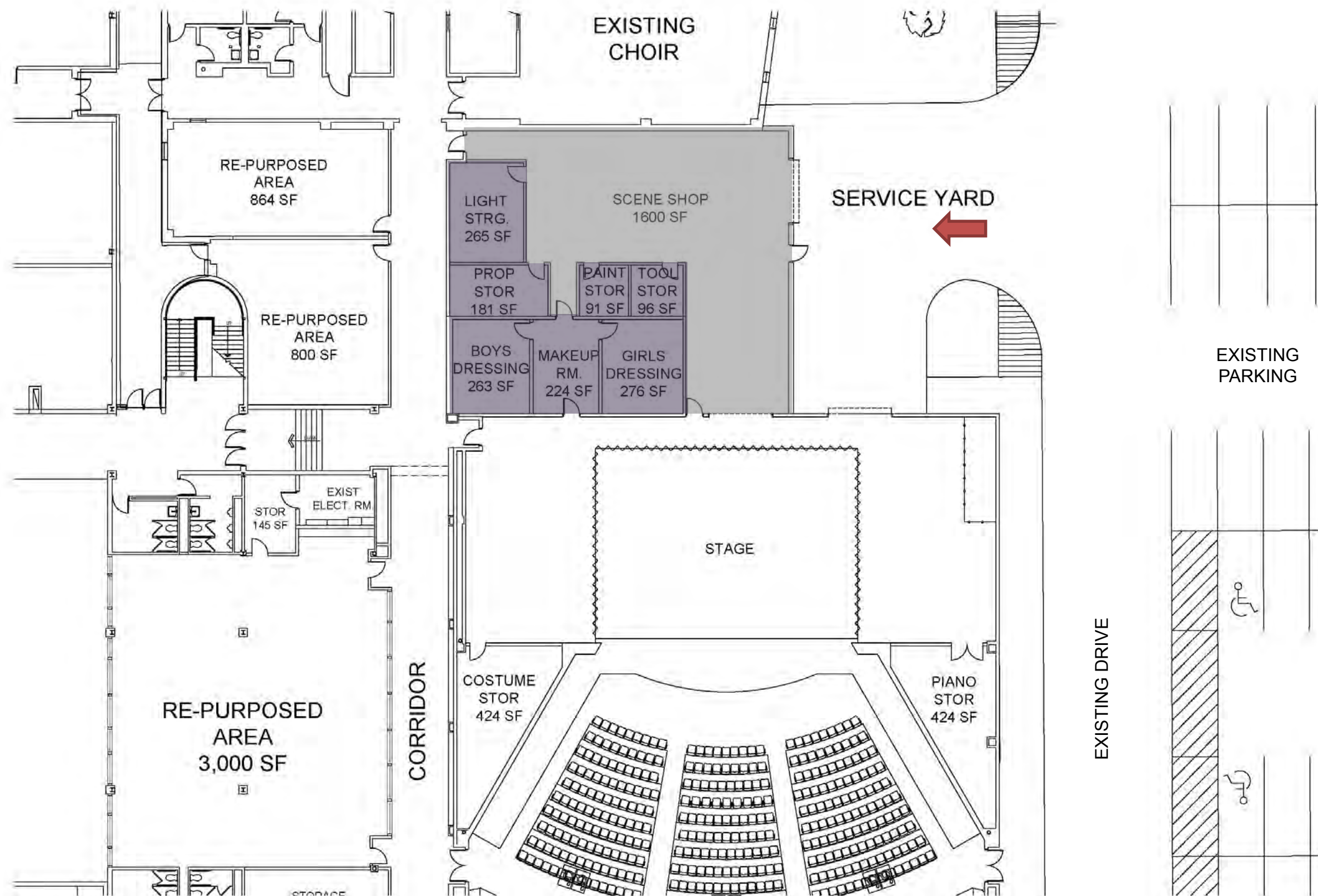
Stratford High School Additions and Renovations

Proposed Floor Plan Layout – House



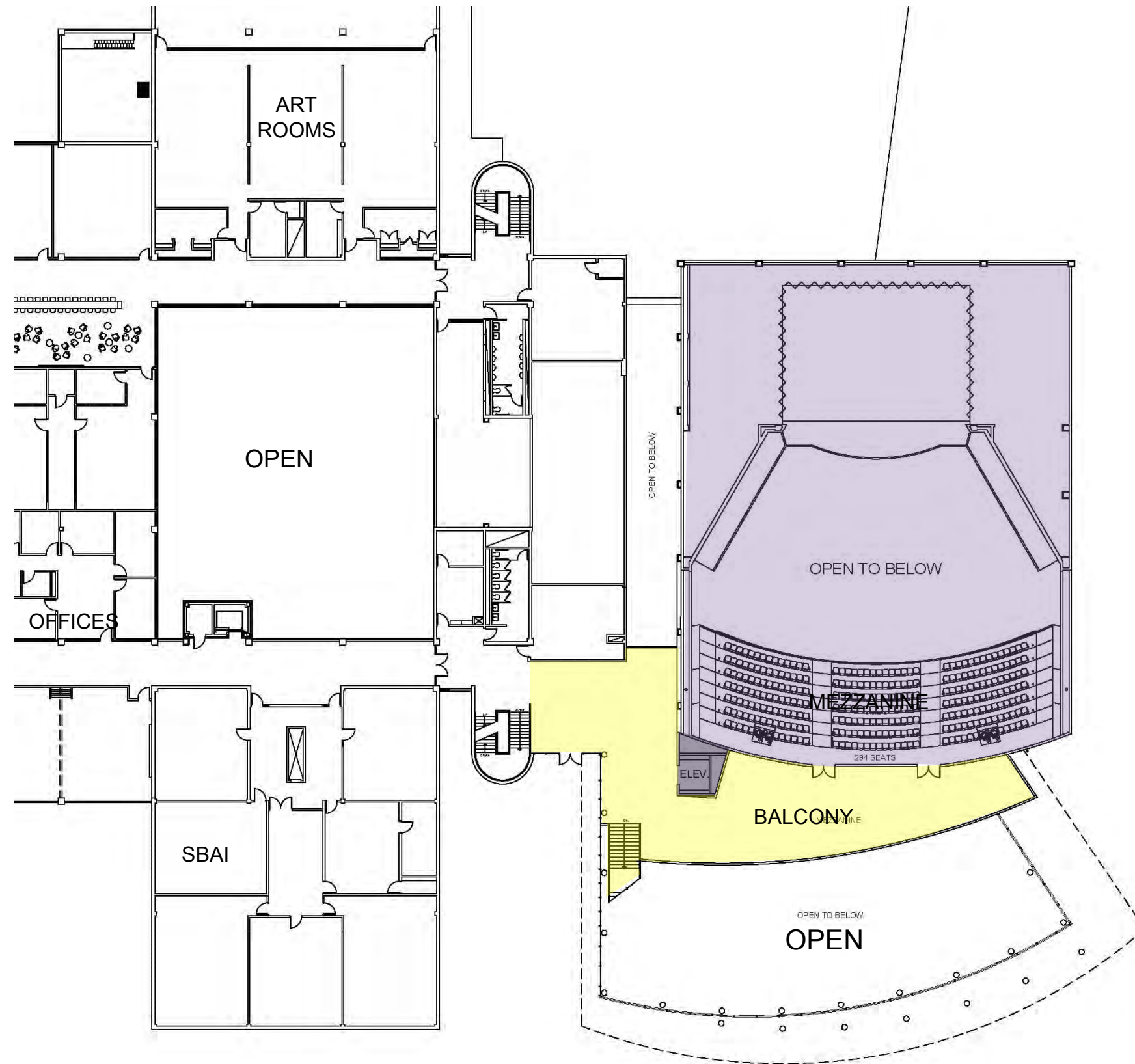
Stratford High School Additions and Renovations

Proposed Floor Plan Layout – Back of House



Stratford High School Additions and Renovations

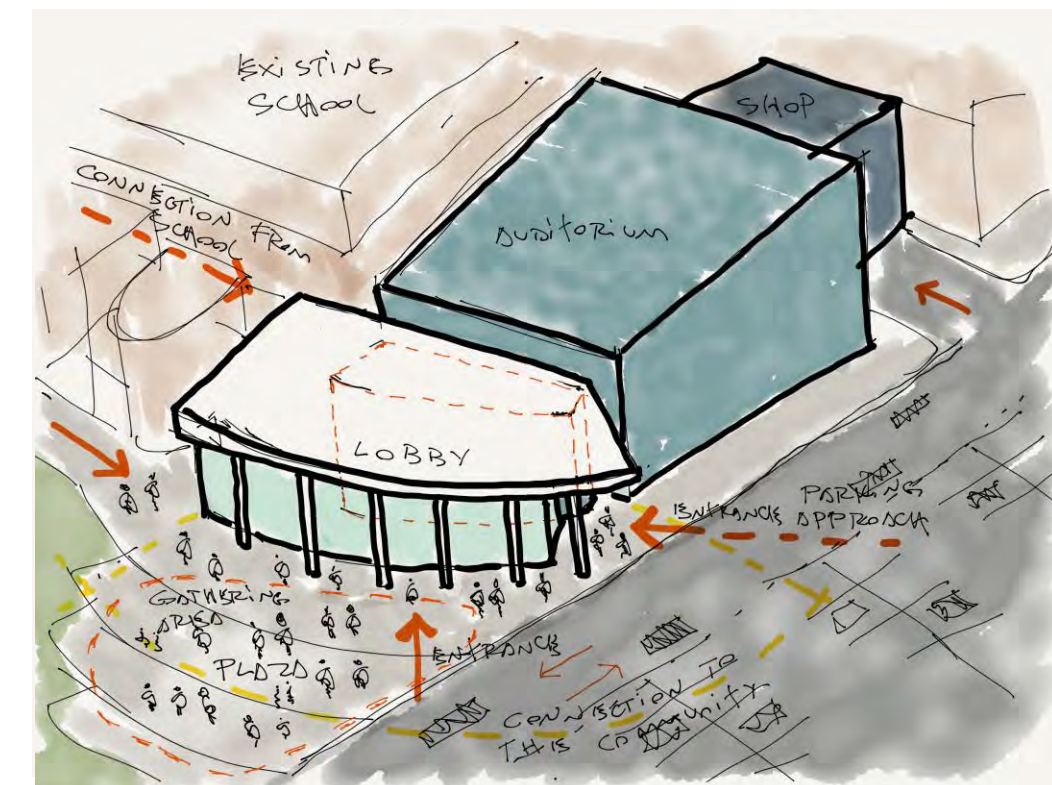
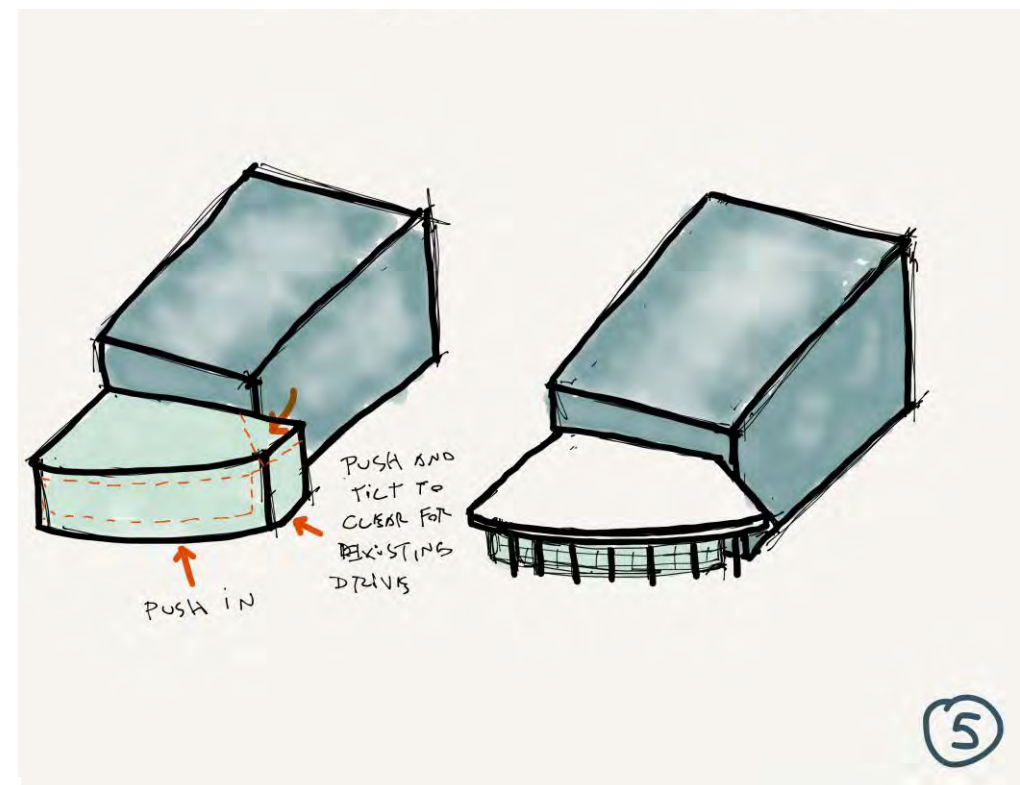
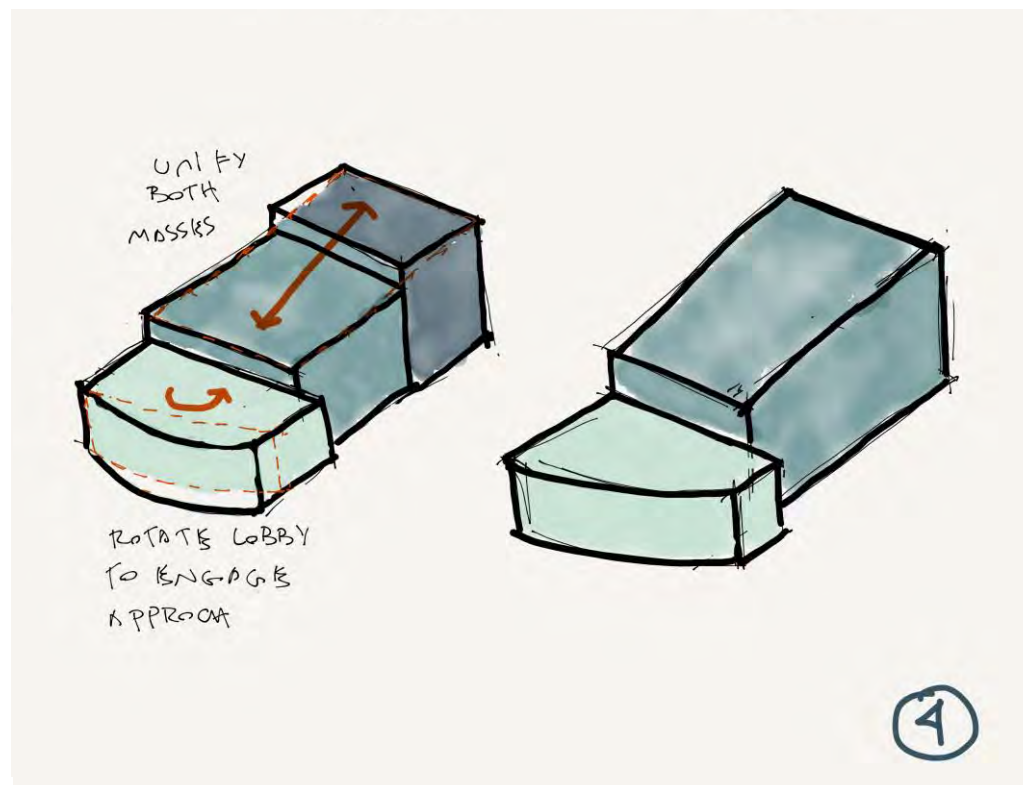
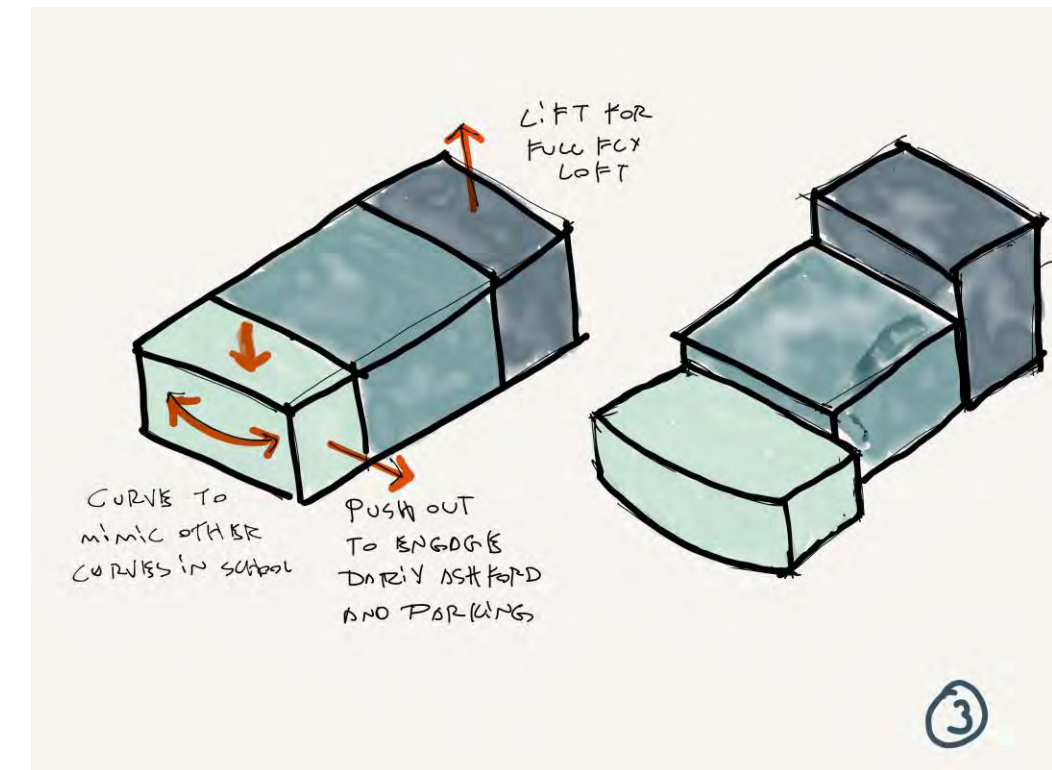
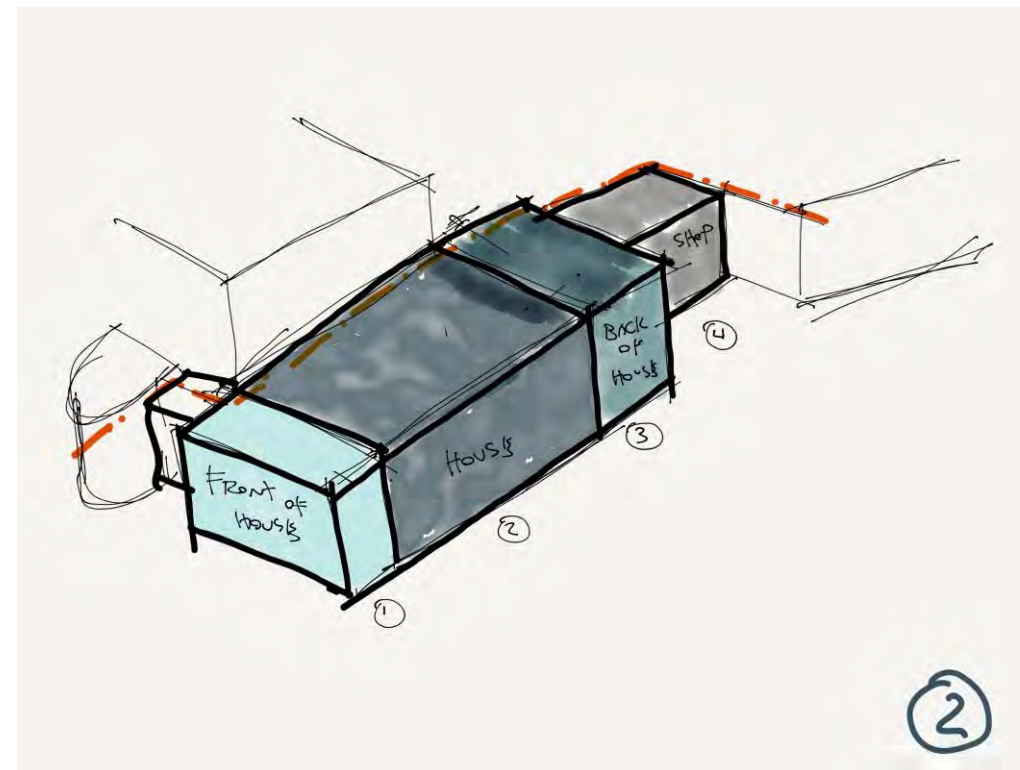
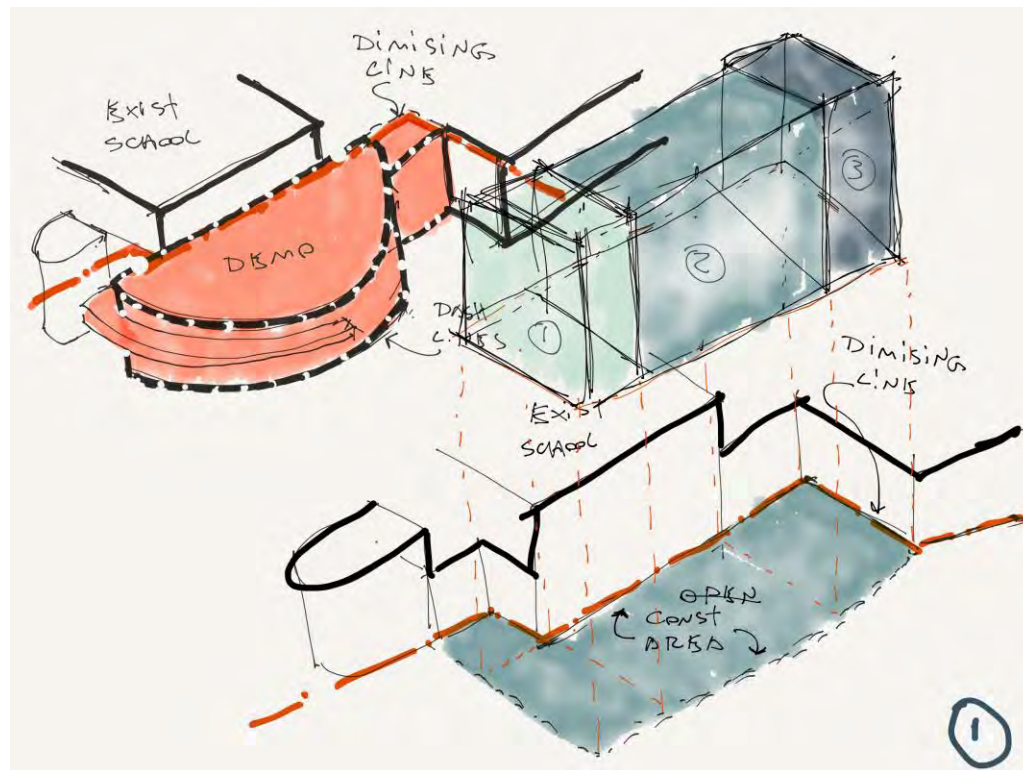
Proposed Floor Plan Layout – New Auditorium

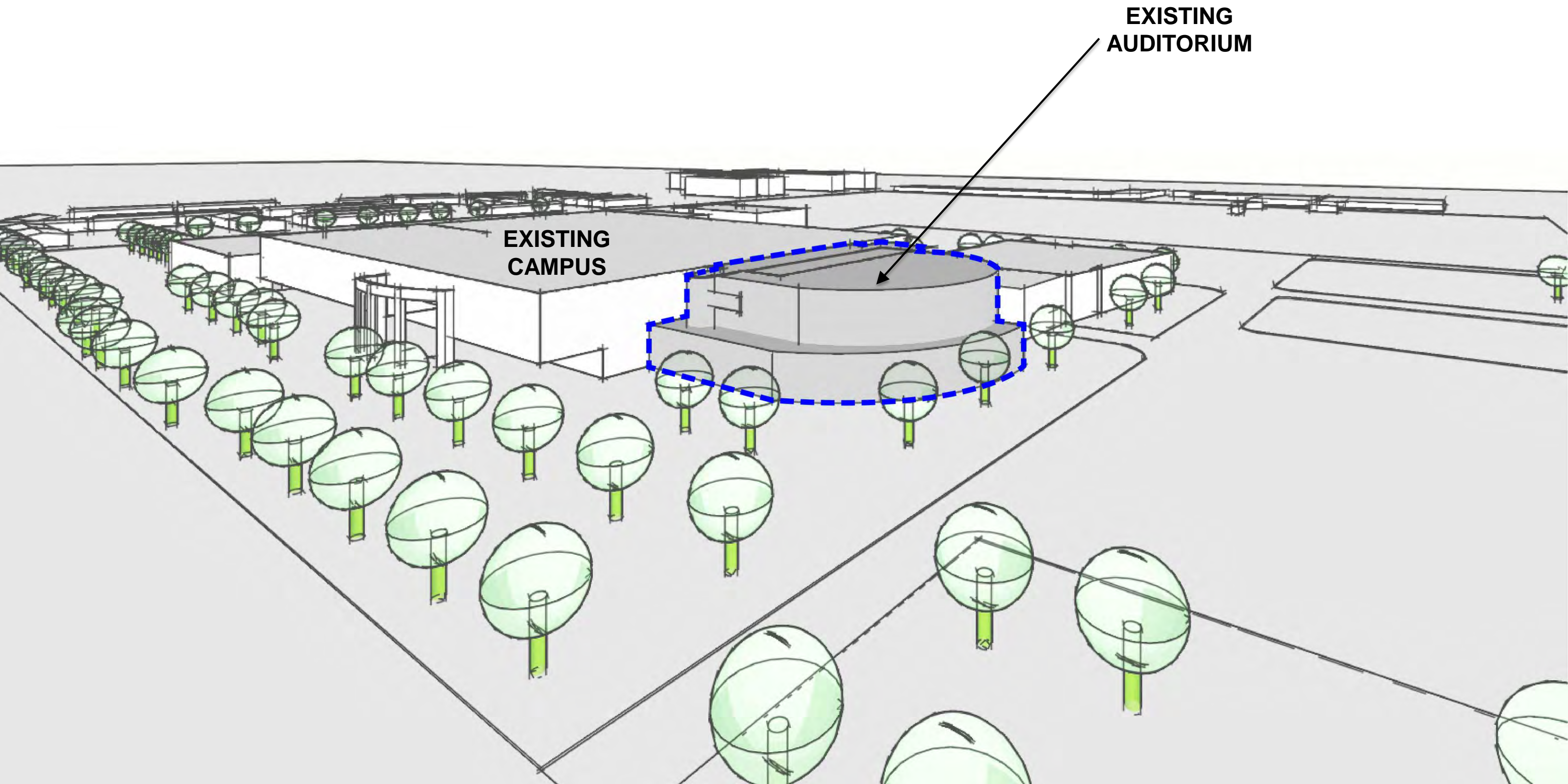


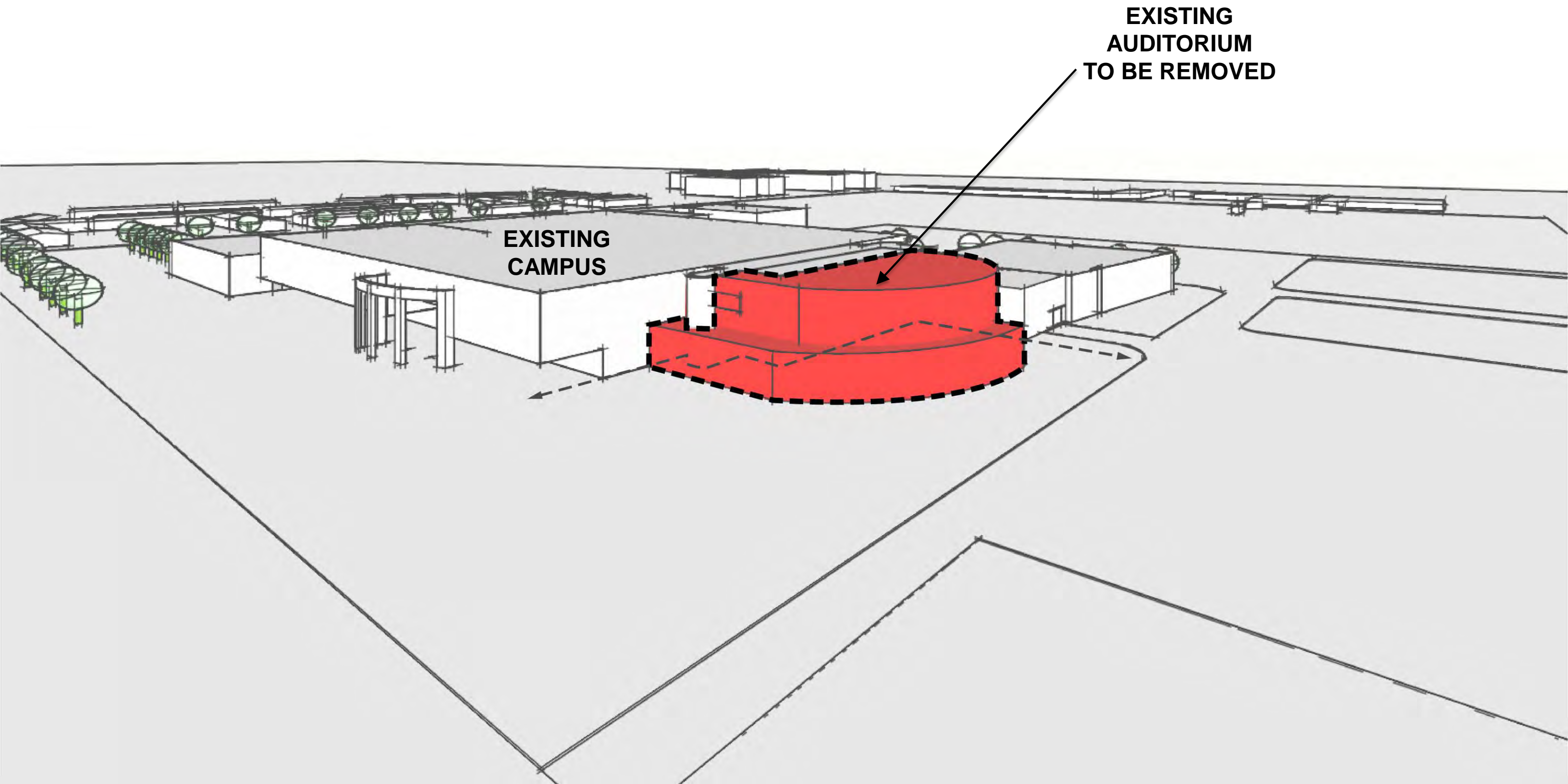
New Auditorium Conceptual Design

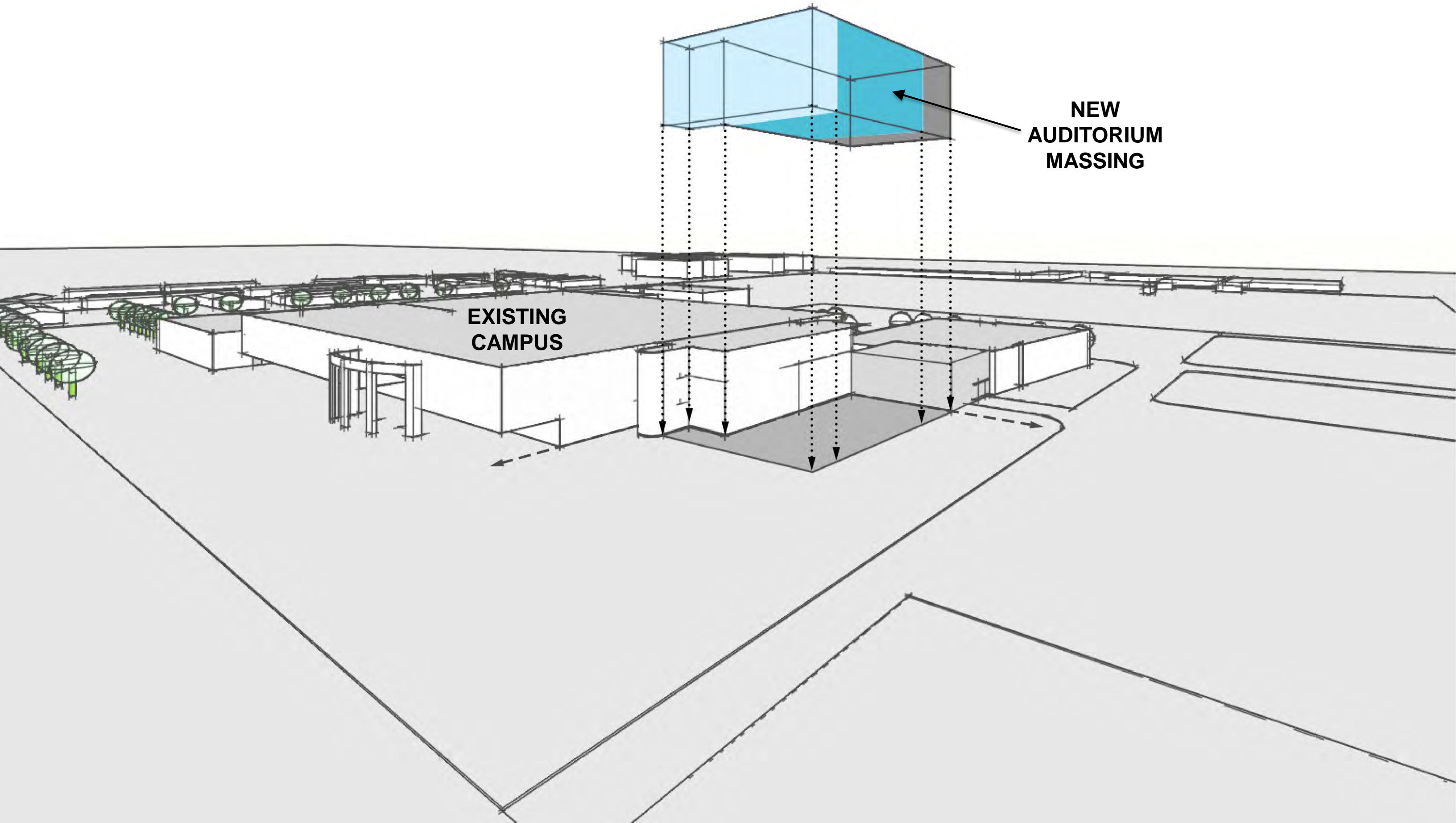
Stratford High School Additions and Renovations

Conceptual Massing Design Process



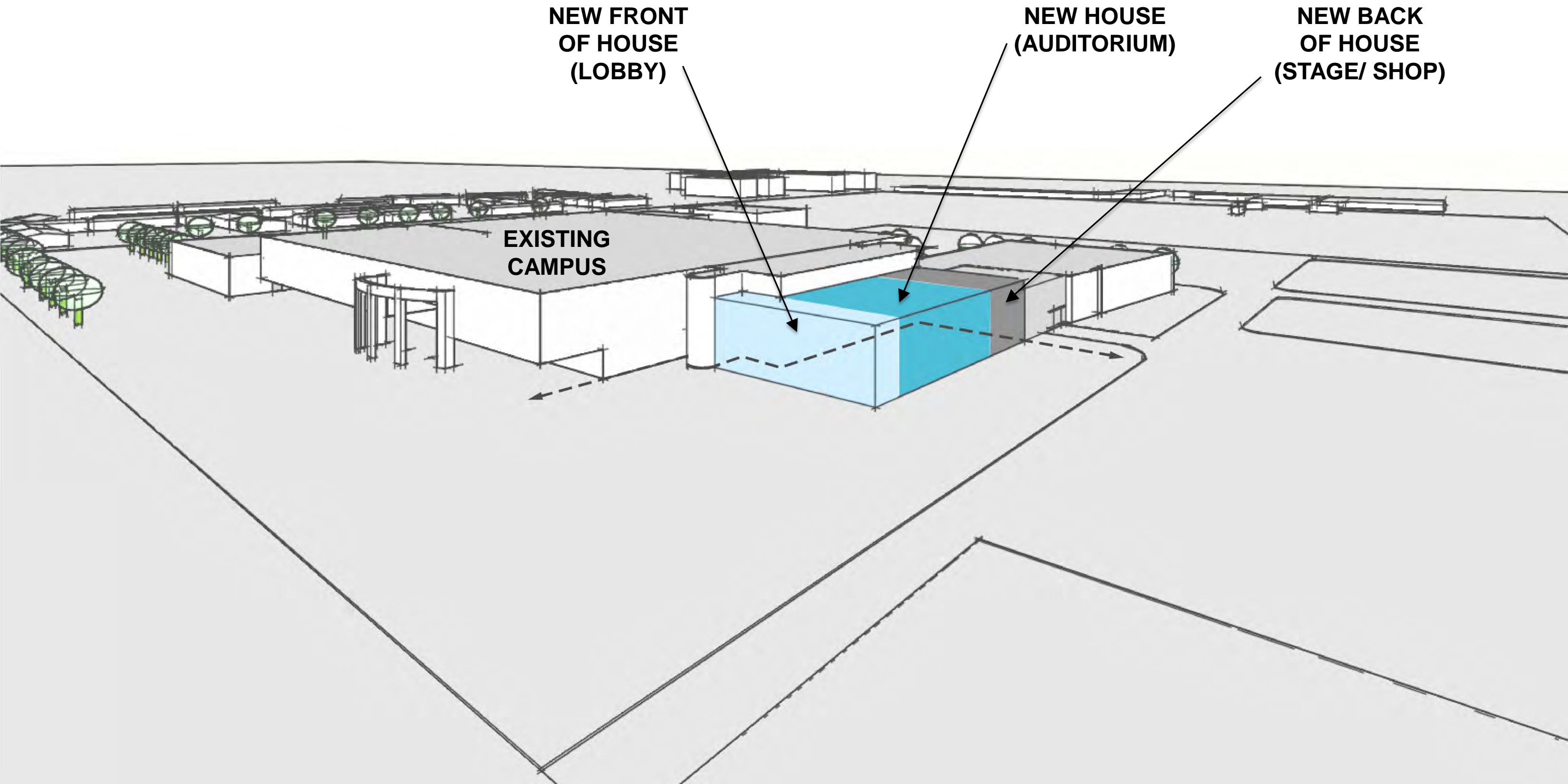


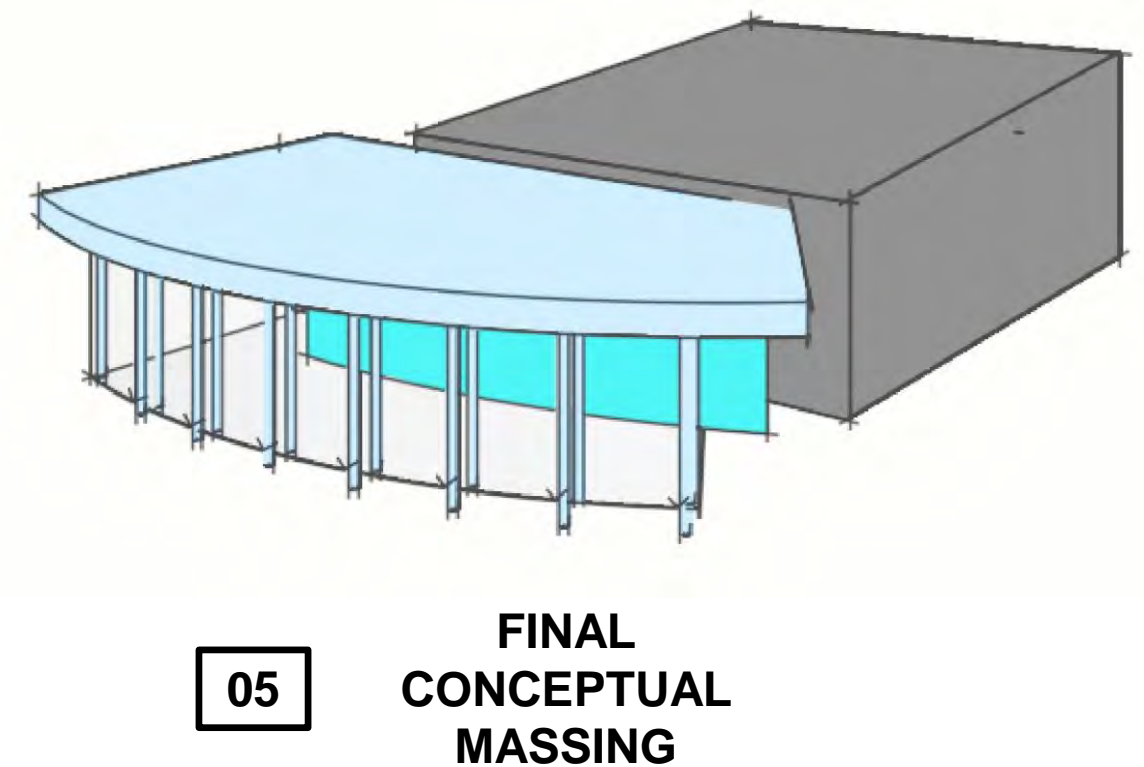
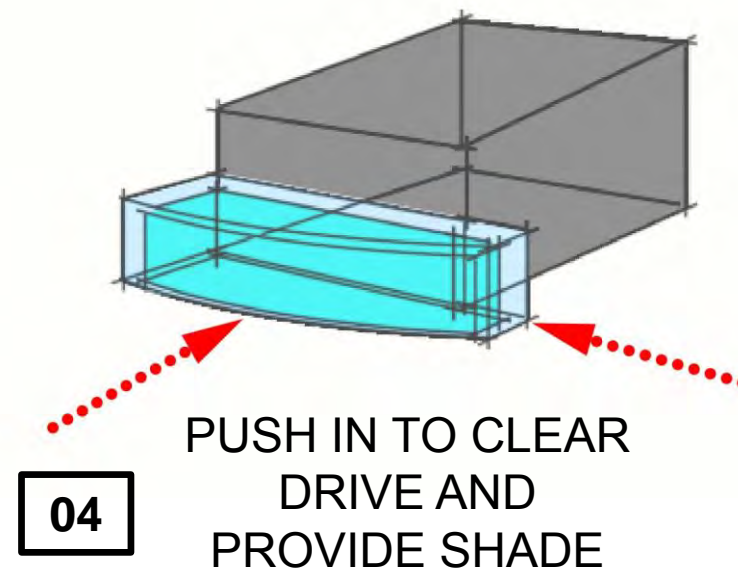
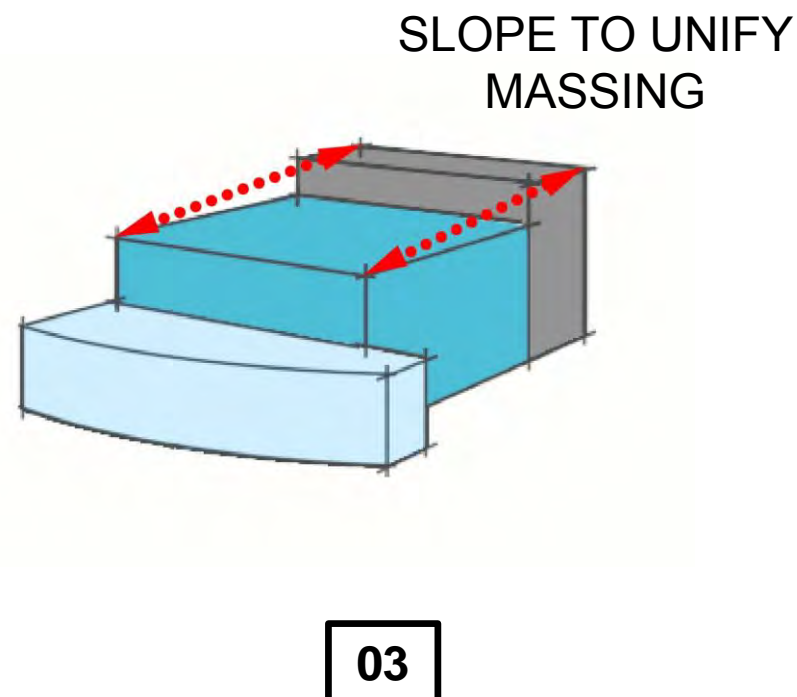
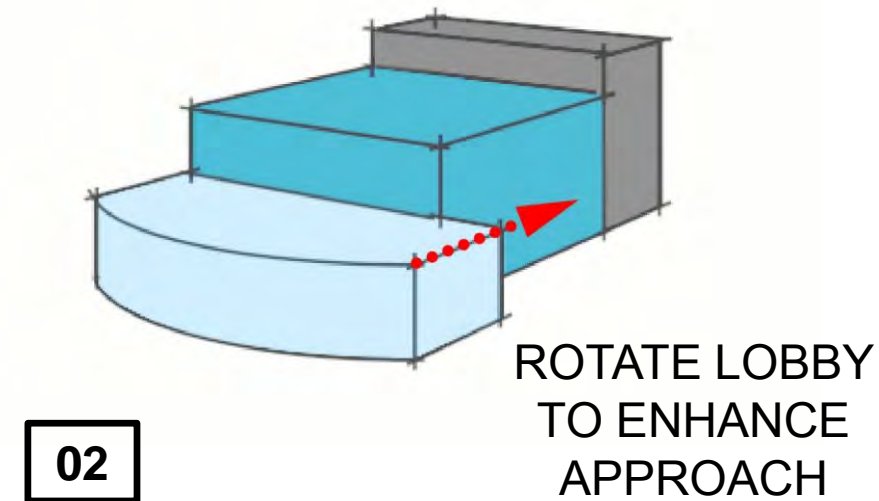
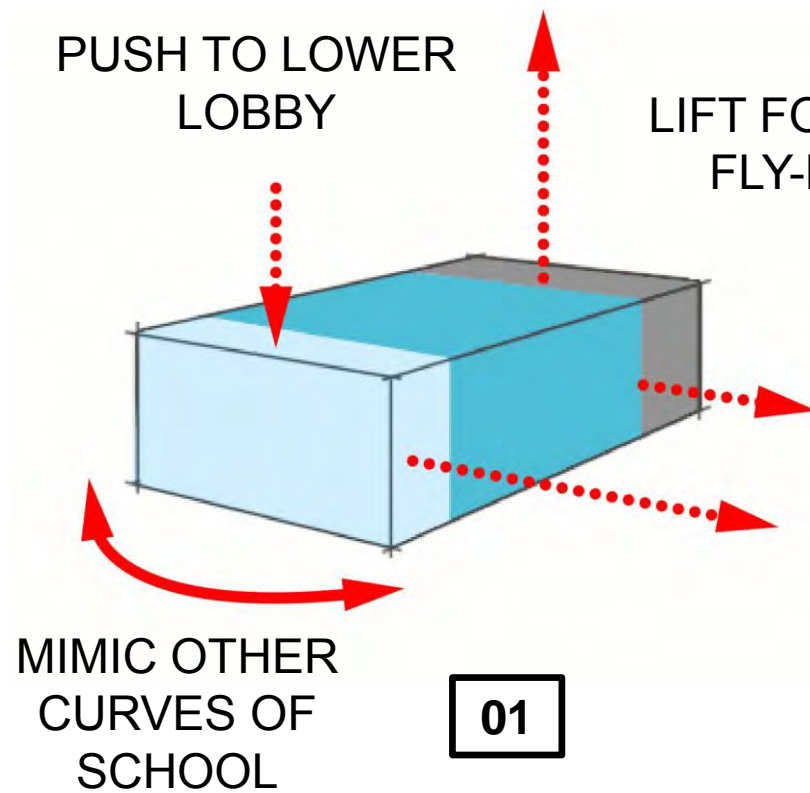




Stratford High School Additions and Renovations

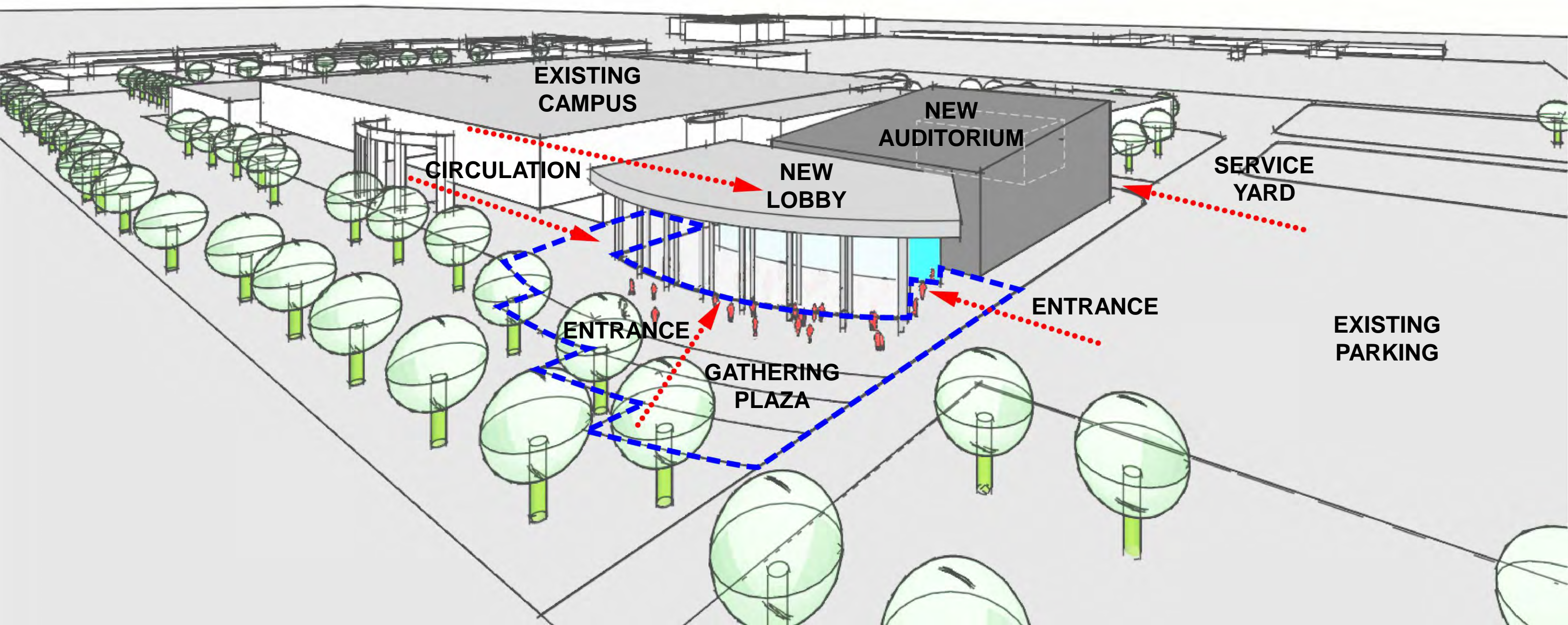
Conceptual Massing Design Process





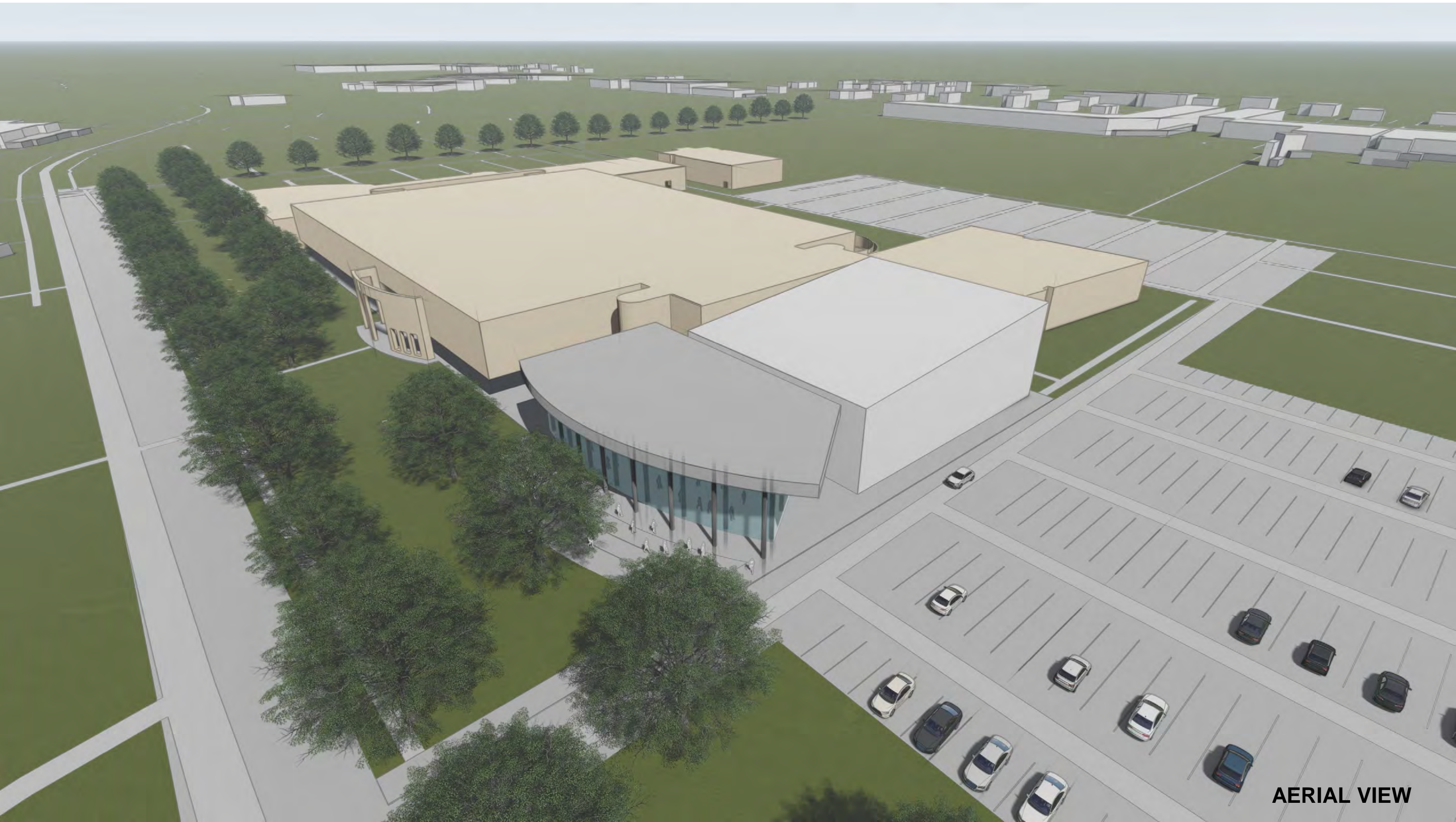
Stratford High School Additions and Renovations

Conceptual Massing Design Process



Stratford High School Additions and Renovations

New Auditorium Conceptual Massing



AERIAL VIEW



MAIN ENTRY VIEW

Stratford High School Additions and Renovations

New Auditorium Conceptual Massing



MAIN FACADE VIEW

Stratford High School Additions and Renovations

New Auditorium Conceptual Massing



VIEW FROM MAIN SCHOOL ENTRY

Stratford High School Additions and Renovations

New Auditorium Conceptual Massing



VIEW FROM DAIRY ASHFORD

Stratford High School Additions and Renovations

New Auditorium Conceptual Massing



VIEW FROM PARKING

New Auditorium Spirit Images

Stratford High School Additions and Renovations

Auditorium Exterior and Plaza - Spirit Images



Stratford High School Additions and Renovations

Auditorium Exterior and Plaza - Spirit Images





Stratford High School Additions and Renovations

Auditorium Exterior and Plaza - Spirit Images









Stratford High School Additions and Renovations

Auditorium Lobby - Spirit Images





CURVED CEILING - DARK WOOD - GREY SEATING - BRICK WAINSCOT WING WALLS







PAT 04 Review

- Log in to: **slido.com**
 - Enter Code: **P727**
1. Do you agree with the direction of the layout for the Auditorium Lobby?
 2. Do you agree with the direction of the layout for the Auditorium?
 3. Do you agree with the direction proposed for the conceptual auditorium massing?

Next Steps



PAT 01

02-28-2019

KICK-OFF

- Fact Finding Review
- Gather Data
- Establish Guiding Principles



PAT 02

03-18-2019

PROG

- Floor Plan improvements
- Auditorium plan review
- Site Improvements



PAT 03

04-03-2019

SD

- Refine Layout Options
- Acoustical consultant



PAT 04

04-25-2019

SD

- Refine Auditorium Layout Options
- Volumetric exterior concepts

PAT 05

05-16-2019

DD

- Refine Layout Options
- Review Exterior Design

S U M M E R
B R E A K

PAT 06

08-21-2019

DD

- Review Overall Design
- Present Exterior and Interior imagery
- Review finishes

PAT 07

09-04-2019

CD 25%

- Review Overall Design
- Review Finishes



Thank You!

