

# Grade 2 – Painted Portraits



Portraiture

# What do you see?



Collage portrait by Yali Ziv

# Artistic Focus: Portraiture



Collage portrait by Yali Ziv

A **PORTRAIT** is a painting, photograph, sculpture, or other artistic representation of a person, which usually focuses on the person's face and head.

## Today's objective:

1. To follow the steps of a guided drawing lesson, in order to create a fun, side-oriented self-portrait.
2. To practice pencil, paint and brush skills.

## WA State Visual Arts Standard

Categorize images based on expressive properties. (VA: Re7.2.2)

# Yali Ziv

- Illustrator based in Tel Aviv, Israel.
- Studied Visual Communication at Shenkar College of Engineering, Art & Design.
- Works mostly with watercolors and paper cutouts.
- Also uses colored pencils for sketching.
- Strong command of shapes and colors.
- Fascinated by the world of fashion and textile in combination with art and illustration.



# Artwork



Portraits by Yali Ziv

# Artwork



Portraits by Yali Ziv



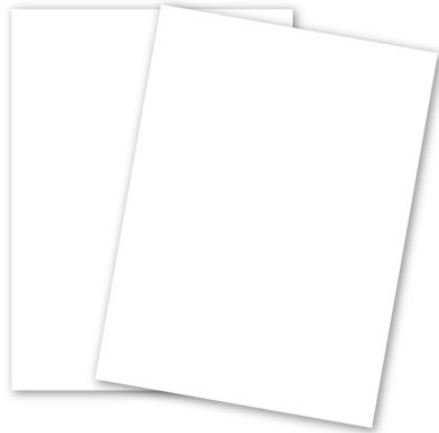
# Artwork



Portraits by Yali Ziv

# Materials

90# white sulphite or  
other stiff paper



Palette or paper plate



Paper towels & wipes



Pencil



Tempera paint



Eraser



Water cups



Paint brushes (medium & small round)



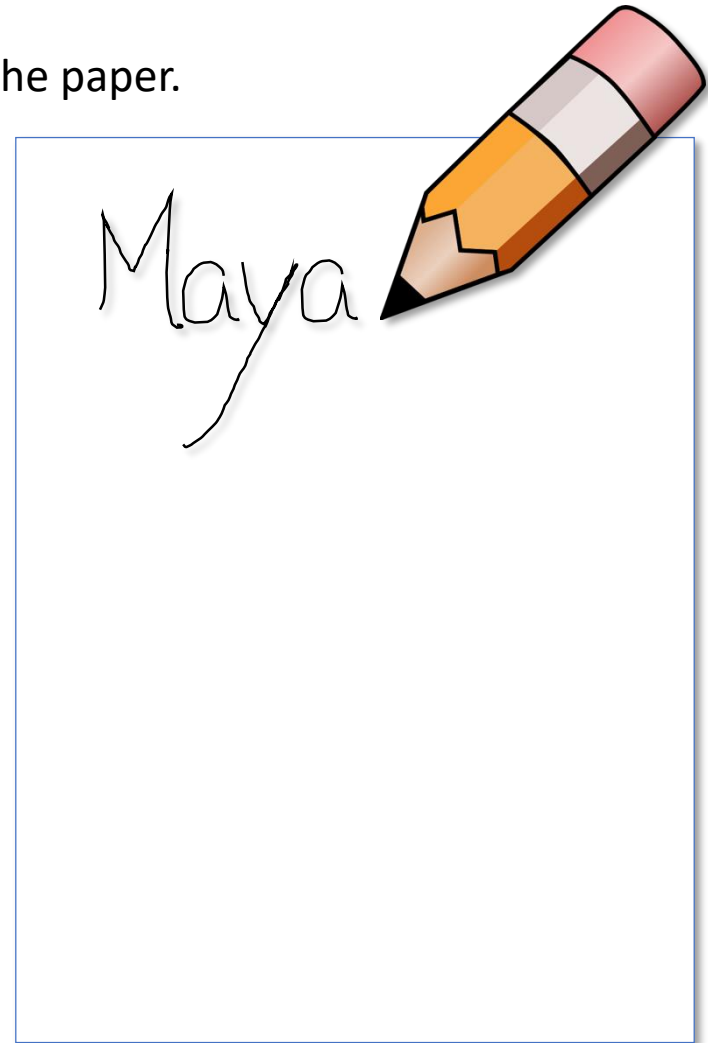


# Example of Today's Project



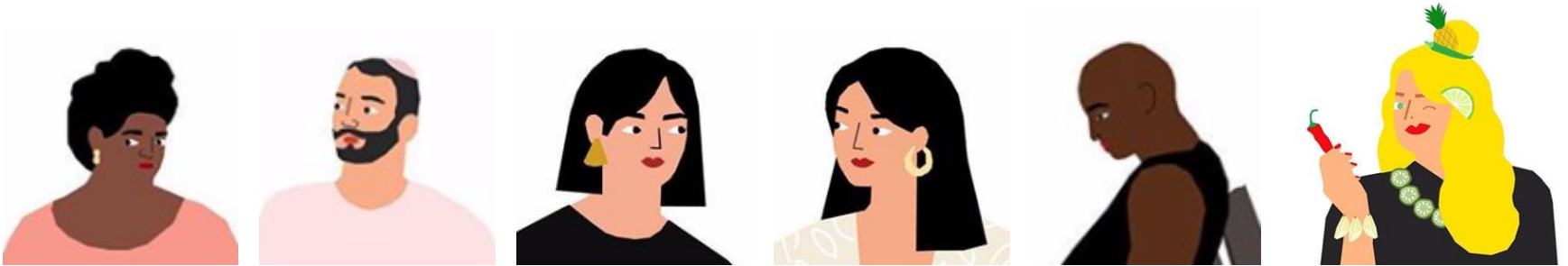
# Before You Begin

1. Write your **name** in pencil on the **back** of the paper.
2. Flip over your paper.
3. **Roll up your sleeves!**



# Step 1

- Take a close look at these faces created by Yali Ziv:



- What do you notice about them?
- What do they have in common?
- What is different about them?

## Step 2

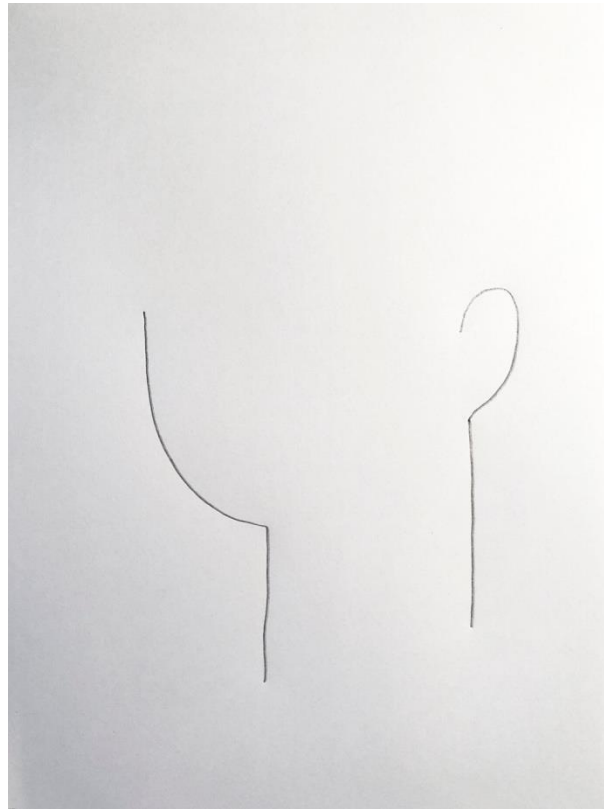
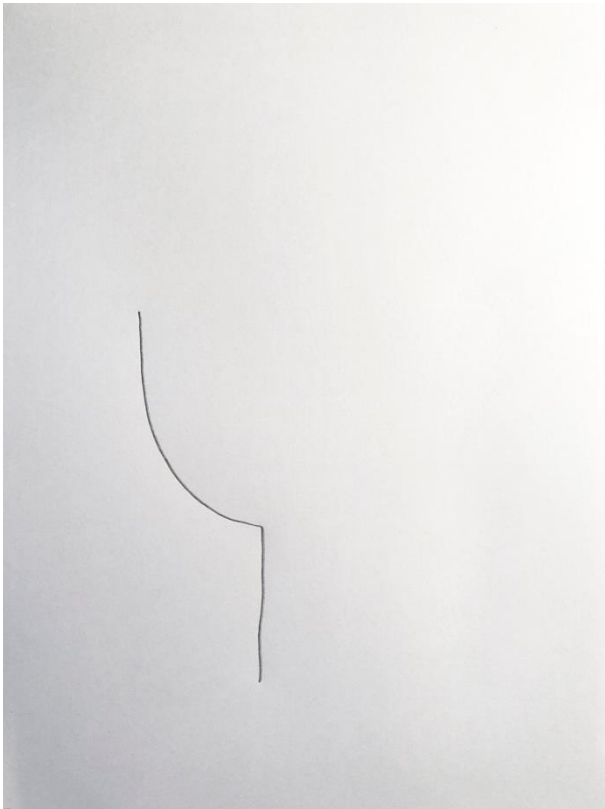
The portraits shown on the previous slide depict people with their faces turned to the side. This is how we will draw our portraits today.

- Notice how this portrait does show these features:
  - Eyebrows
  - Eyes
  - Nose
  - Closed mouth
  - Ear – contour or outline of one ear only
  - One simple earring
- Notice how this portrait does not show these details:
  - No eyelashes
  - No fine lines in the ears or elsewhere on the face
  - No teeth
  - No contour line under the chin
- Now it's time to relax and have fun drawing your own portrait.



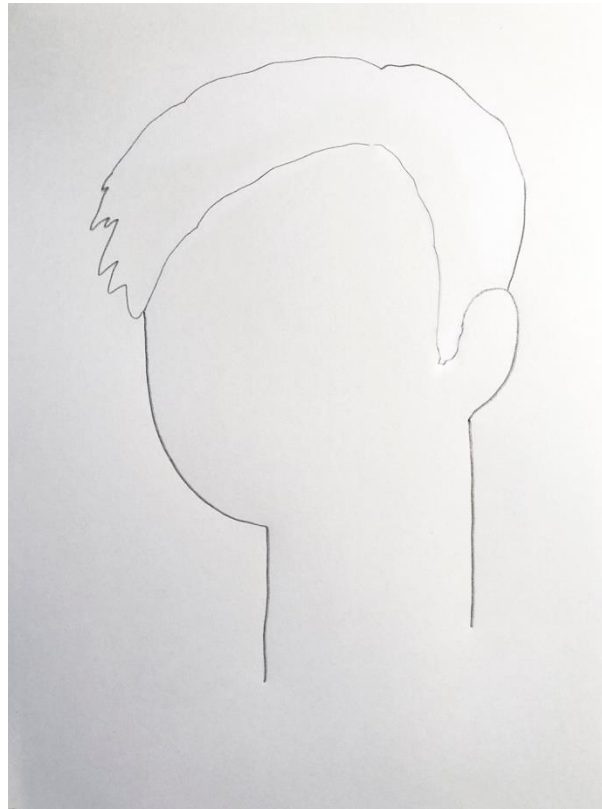
# Step 3

- You will start with paper, pencil and eraser. The paint will come later.
- Start by drawing your chin, like half of a rounded Y shape. Draw big like this.
- Draw the other side of the neck and one ear as below.
- You may choose which way you would like your self-portrait to face.



## Step 4

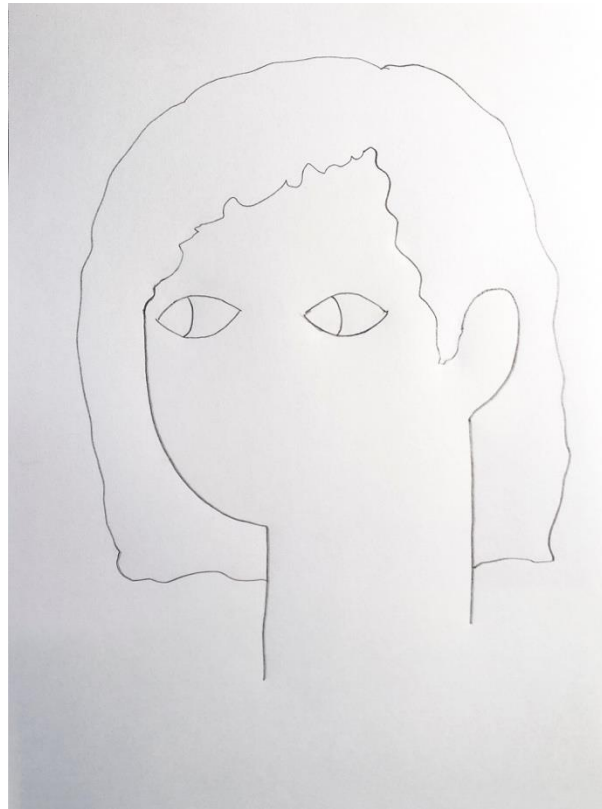
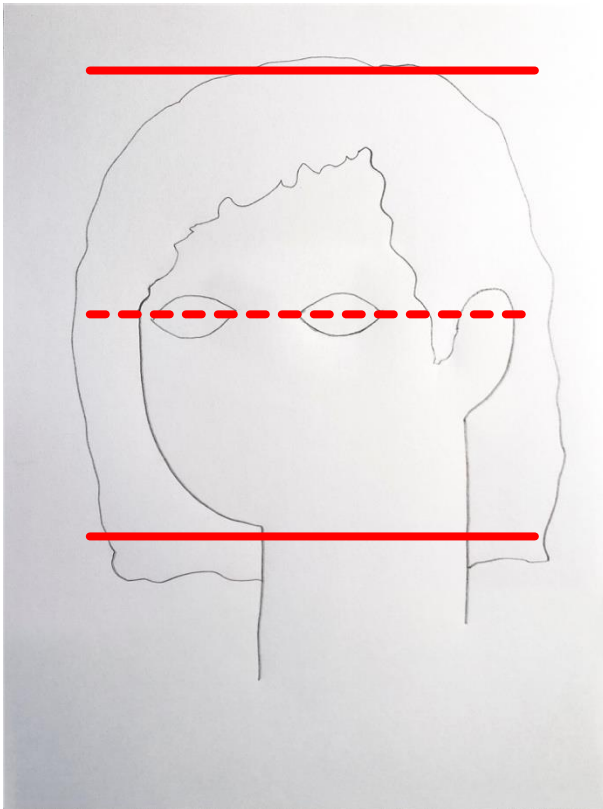
- Draw curvy lines for wavy hair or straight lines for straight hair.
- You may draw long hair or short hair.
- Fill your paper with your drawing like this.





# Step 5

- Find the halfway point between the top of your head and your chin.
- Draw one eye very close to the edge of your face away from the ear.
- Draw the second eye about halfway between the first eye and your ear.
- Draw the iris (colored part) in the corner of each eye farthest away from your ear.



## Step 6

- To draw your nose, start between your eyes and draw a leaning capital L that ends about halfway between your eyes and your chin.
- Draw your mouth about halfway between your nose and chin.
- You can draw lips like the ones shown or a simple smile line.



# Step 7

- Draw simple eyebrows over your eyes.
- Draw an earring if you'd like.
- Keep it simple.



# Step 8

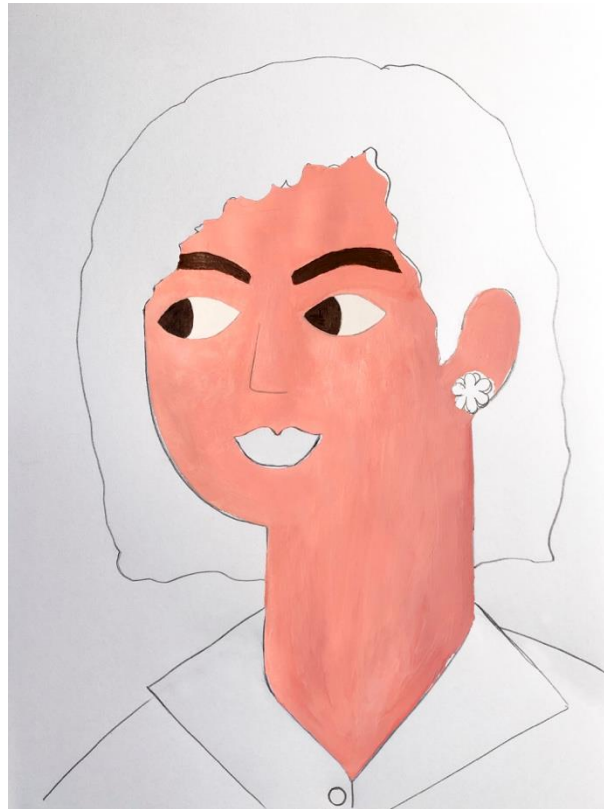
- Draw shoulders sloping down from your neck.
- Draw a shirt, with a V-neck, a round neck, a collar, or a button.
- You have finished drawing your portrait.



## Step 9

Now it is time to paint! You will need only a small amount of paint.

- Work from the inside out, starting with the skin, eyes and eyebrows.
- You can create most skin colors by mixing brown and white. Sometimes you need to add a bit of yellow or red to the mix as well.



# Step 10

- Paint your mouth. You will need only a tiny amount of paint for your mouth.  
Red + white = pink. Red + white + yellow = peach.  
Red + white + brown = maroon. Red + white + a tiny drop of blue = lavender rose.
- Paint your hair and any other details on your head.





# Step 11

- Use one or two colors to paint your shirt.
- Leave the background white.
- Congratulations on your finished self-portrait!



# Reflection

- How did you feel about painting a self-portrait looking to the side?
- Is it easier or harder to draw this kind of portrait compared to a person who is facing forward? Why?
- What was your favorite part of our project today?
- Would anyone like to share their art?



# Credits

1. Yali Ziv's official website <https://www.yaliziv.com>
2. Yali Ziv on Instagram <https://www.instagram.com/yaliziv/>
3. Original LWSD art samples, used with permission.