

# JOHN C. DUNHAM STEM PARTNERSHIP SCHOOL FAQ



## 1. Who will select students for the John C. Dunham STEM Partnership School?

- » Each school district will select their own students for the John C. Dunham STEM Partnership School.

recognized model inspiring students to transformative academic achievement in science and mathematics, employing the community as a laboratory to create leaders of tomorrow and improving workforce development. This vision creates a new model of education focused on learning all content through a science, mathematics, engineering and technology context.

## 2. Who will select teachers for the John C. Dunham STEM Partnership School?

- » Each school district will select the teachers for the John C. Dunham STEM Partnership School.

## 7. Will other subjects be taught at the school in addition to mathematics and science?

- » Yes. All subjects required to be taught by the Illinois State Board of Education will be taught at the John C. Dunham STEM Partnership School.

## 3. How much more will it cost to educate students at this school than in my district?

- » The cost of educating students in the John C. Dunham STEM Partnership School will be less than educating them in their home school.

## 8. Is the curriculum of the school aligned to the common core standards, the Next Generation Science Standards and Illinois State Board of Education requirements?

- » Yes. The curriculum of the school is aligned to the common core standards, the Next Generation Science Standards and the Illinois State Board of Education requirements.

## 4. How will the school be collaboratively funded?

- » The school will be collaboratively funded by a sharing of costs between the school districts and the university.

## 9. Why are partners such as Caterpillar, Exelon, Waste Management, Nicor, Cabot Microelectronics, Argonne National Laboratory, Fermi National Accelerator Laboratory, the DuPage Children's Museum, Morton Arboretum, and the Illinois Mathematics and Science Academy involved in the development and creation of the curriculum for this school?

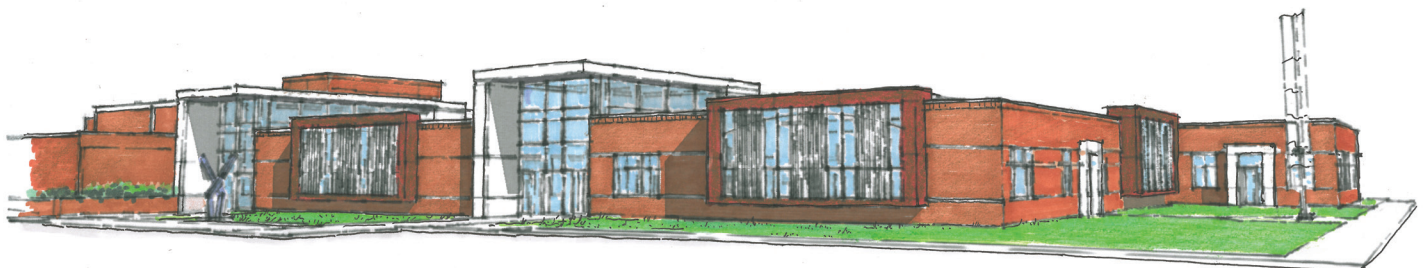
- » Partners are involved in the development of the curriculum for the school because they bring a college and career readiness insight to the curriculum through real world applications.

## 5. In addition to regular school fees, how much will I have to pay as a parent for my child to attend the John C. Dunham STEM Partnership School?

- » In addition to school fees, parents will not be charged any additional costs to attend the John C. Dunham STEM Partnership School.

## 6. What is the vision of the John C. Dunham STEM Partnership School? How does that differ from the school my child is currently attending?

- » Arising from innovation and collaboration, the John C. Dunham STEM Partnership School is a nationally



**10. How will my school district benefit from being part of this STEM partnership school?**

- » School districts will benefit from being part of the STEM Partnership School in several ways. Students who learn best through a STEM context will have a rich STEM learning environment. Teachers will participate in professional development experiences and will ultimately return to their home school where they can share their enriched knowledge of content and pedagogy with their colleagues. The school districts will be part of an ongoing partnership with other school districts, the university, not-for-profits and the corporate sector in which enriched dialog about teaching and learning continually occurs. Opportunities for other students may also increase due to efficiencies created by cost sharing at the John C. Dunham STEM Partnership School.

**11. Does Aurora University offer other STEM programs in addition to the John C. Dunham STEM Partnership School?**

- » Yes. Aurora University, in partnership with the school districts, the City of Aurora, and Communities In Schools, offers a summer STEM experience for middle school students. After-school programs in STEM also are offered at several middle schools.

**12. Where is the school located on the Aurora University campus?**

- » The school is located on the east side of the campus, adjacent to Stephens Hall.

**13. Will transportation be provided to the students?**

- » Yes. Transportation will be provided by the school districts.

**14. If my child attends the John C. Dunham STEM Partnership School, will he/she still be enrolled in my school district?**

- » Yes. Students will remain part of their home school district.

**15. What opportunities will students and teachers at the school receive from Aurora University?**

- » Students attending the John C. Dunham STEM Partnership School will receive a \$1,000 scholarship to attend Aurora University. Full-time teachers at the John C. Dunham STEM Partnership School will be offered the opportunity to enroll in six hours of graduate credit per year.

**16. What services will be offered for bilingual students or parents who do not speak English?**

- » Services for bilingual students and parents will be offered on an as-needed basis.

**17. Will the Director of the John C. Dunham STEM Partnership School be a certified administrator in Illinois?**

- » The Director of the John C. Dunham STEM Partnership School will be a certified administrator in Illinois.

**18. What extracurricular activities (clubs, music, sports, etc.) will be offered?**

- » At the present time, some extra-curricular activities, including clubs, will be offered at the STEM Partnership School.

**19. When does the school open?**

- » The school will open in August 2014.

**20. What calendar does it follow? And what are the school hours?**

- » The school will follow the West Aurora School District 129 calendar for the 2014–15 school year. Students will attend school from 8:00 a.m. to 3:00 p.m.