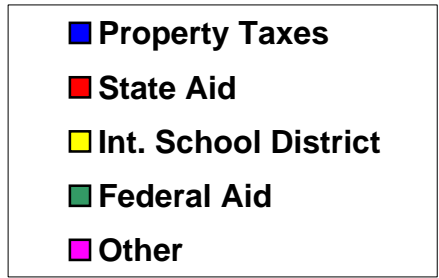
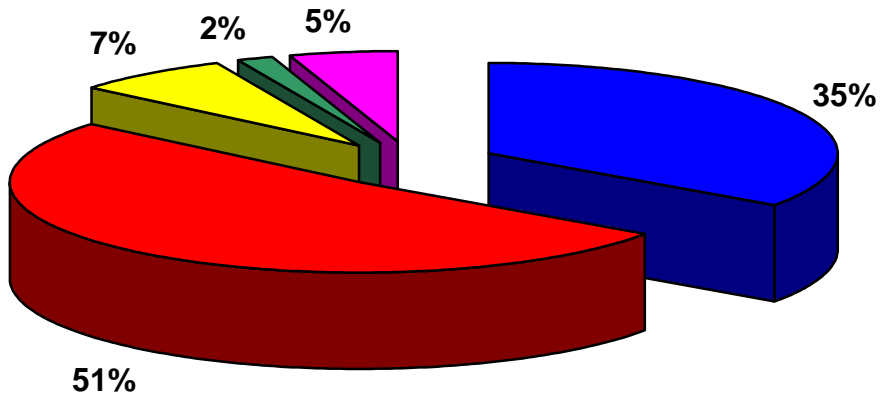


**NOVI COMMUNITY SCHOOLS
SUMMARY OF BUDGETS
2008 - 2009
As adopted June, 2008**

| | GENERAL FUND | ATHLETICS | FOOD SERVICE | DEBT FUND | SINKING FUIND |
|---------------------------------------|-------------------|----------------|------------------|-------------------|------------------|
| REVENUES | | | | | |
| Local Sources-Property Tax | 24,669,372 | | | 13,976,946 | 1,141,063 |
| Local Sources-Other | 3,012,460 | 250,000 | 2,233,577 | 126,000 | 12,000 |
| State Sources | 36,505,486 | | 237,078 | | |
| Federal Sources | 1,196,453 | | 83,818 | | |
| Transfer-Intermediate School District | 5,193,106 | | | | |
| Other Transactions | 555,000 | | | 61,805 | |
| Transfer from General Fund | | 571,061 | | | |
| TOTAL REVENUES | 71,131,877 | 821,061 | 2,554,473 | 14,164,751 | 1,153,063 |
| EXPENDITURES | | | | | |
| INSTRUCTION | | | | | |
| Elementary | 20,083,401 | | | | |
| Middle School | 6,301,411 | | | | |
| High School | 10,041,742 | | | | |
| Added Needs | 8,952,801 | | | | |
| Adult Education | 90,627 | | | | |
| TOTAL INSTRUCTION | 45,469,982 | 0 | 0 | 0 | 0 |
| SUPPORT SERVICES | | | | | |
| Pupil Services | 4,693,432 | | | | |
| Instructional Staff Services | 3,479,151 | | | | |
| General Administration | 443,006 | | | | |
| School Administration | 3,439,617 | | | | |
| Business Services | 1,061,258 | | | | |
| Operations and Maintenance | 7,474,338 | | | | |
| Transportation Services | 3,236,125 | | | | |
| Other Central Services | 1,044,374 | | | | |
| TOTAL SUPPORT SERVICES | 24,871,301 | 0 | 0 | 0 | 0 |
| Community Services | 2,404,516 | | | | |
| Athletic Activities | | 821,061 | | | |
| Food Services | | | 2,633,162 | | |
| Debt Service | | | | 14,035,777 | |
| Capital Projects Expenditures | | | | | 514,000 |
| Transfers and Other Transactions | 782,779 | | 170,000 | | |
| TOTAL EXPENDITURES | 73,528,578 | 821,061 | 2,803,162 | 14,035,777 | 514,000 |
| Revenues over/(under) Expenditures | (2,396,701) | 0 | (248,689) | 128,974 | 639,063 |
| Beginning Fund Balance (Projected) | 11,334,864 | 0 | 485,995 | 644,272 | 747,952 |
| Ending Fund Balance | 8,938,164 | 0 | 237,306 | 773,246 | 1,387,015 |

NOVI COMMUNITY SCHOOL DISTRICT
2007-08 BUDGET
As Adopted April, 2008

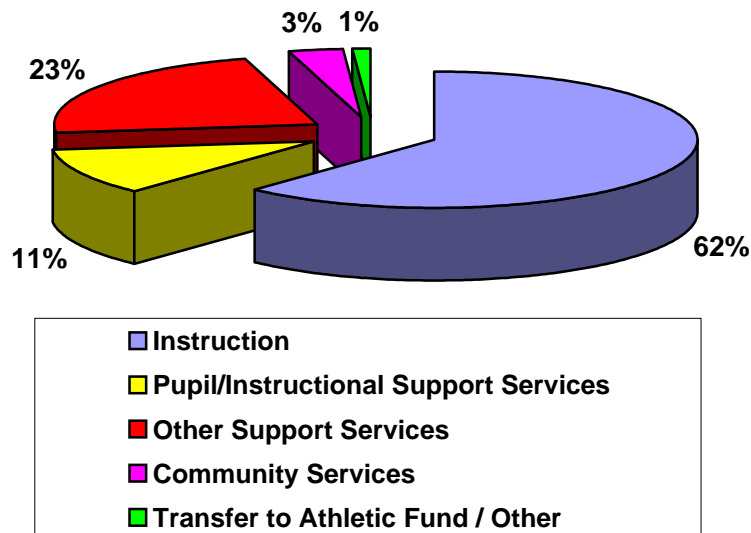
2008-09 General Fund Revenues



| | |
|----------------------|-------------------|
| Property Taxes | 24,669,372 |
| State Aid | 36,505,486 |
| Int. School District | 5,193,106 |
| Federal Aid | 1,196,453 |
| Other | 3,567,459 |
| TOTAL: | 71,131,876 |

NOVI COMMUNITY SCHOOL DISTRICT
2007-08 BUDGET
As Adopted April, 2008

2008-09 General Fund Expenditures - by Category



Definitions of Expenditure Categories

Instruction - Instruction includes those activities dealing directly with the teaching of students or the interaction between teacher and pupils in a classroom or in a classroom situation.

Pupil/Instructional Support Services - Pupil and instructional staff support services include those activities which are designed to assess and improve the well-being of pupils, supplement the teaching process, and assist the process of providing learning experiences for pupils. These activities include such services as guidance, psychological, speech, social work and library/media, and computer-based instruction, curriculum development, supervision and direction of instructional staff, and academic student assessment.

Other Supporting Services - Other support services include those general administration activities concerned with establishing policy and operating schools and the school system; those school administration activities associated with the principal's office; those business activities concerned with budgeting, accounting, payroll, purchasing and internal services; those operations and maintenance activities concerned with keeping school buildings open, comfortable, and safe for use, including payment of utility costs; those pupil transportation activities concerned with the conveyance of pupils to and from school; and activities other than those listed above which support each of the instructional and supporting service programs, including research, personnel and data processing. This category also includes principal and interest payments on bus loans and capital outlay expense, primarily for purchase of buses.

Community Services - Community Services consist of those activities that are not directly related to providing education for pupils in a school system. These include services provided by the school system for the community as a whole or some segment of the community, such as community recreation programs, civic activities, and programs for the care and custody of children.

Transfer to Athletic Fund - The athletic fund finances the interscholastic athletic programs which are under the supervision of the local school board. The athletic fund is not self-supporting and requires a contribution from the general fund to maintain the program.

**NOVI COMMUNITY SCHOOL DISTRICT
2008-09 BUDGET
General Appropriations Act**

RESOLVED, that this resolution shall be the general appropriations act of the Novi Community School District for the fiscal year ending June 30, 2009; AN ACT to make appropriations; to provide for the expenditure of the appropriations; and to provide for the disposition of all income received by the Novi Community School District

BE IT FURTHER RESOLVED, that the total revenues and unappropriated fund balance estimated to be available for appropriations in the general fund of the Novi Community School District for the fiscal year ending June 30, 2009 is as follows:

REVENUE:

| | |
|---------------------------------------|-------------------|
| Local | 27,681,832 |
| State | 36,505,486 |
| Intermediate | 5,193,106 |
| Federal | 1,196,453 |
| Other | <u>555,000</u> |
| TOTAL REVENUE: | 71,131,877 |
| Unappropriated Fund Balance | <u>2,396,701</u> |
| TOTAL AVAILABLE TO APPROPRIATE | 73,528,578 |

BE IT FURTHER RESOLVED, that of the total available to appropriate in the **General Fund** is hereby appropriate in the amounts and for the purposes set forth below:

EXPENDITURES:

| | |
|---------------------------|-------------------|
| General Education: | 61,173,819 |
| Special Education: | 9,952,243 |
| Community Services: | <u>2,402,516</u> |
| TOTAL APPROPRIATED | 73,528,578 |

**NOVI COMMUNITY SCHOOL DISTRICT
2008-09 BUDGET
General Appropriations Act**

BE IT FURTHER RESOLVED, that the total revenues and unappropriated fund balance estimated to be available for appropriations in the **Debt Funds** of the Novi Community School District for the fiscal year June 30, 2009 is as follows:

REVENUE:

| | |
|---------------------------------------|-------------------|
| Property Tax | 13,976,946 |
| Interest | 126,000 |
| Other | <u>0</u> |
| TOTAL REVENUE: | 14,102,946 |
| Unappropriated Fund Balance | <u>(128,974)</u> |
| TOTAL AVAILABLE TO APPROPRIATE | 13,973,972 |

BE IT FURTHER RESOLVED, that of the total available to appropriate in the **Debt Funds** is hereby appropriate in the amounts and for the purposes set forth below:

EXPENDITURES:

| | |
|---------------------------|-------------------|
| Redemption of Principal | 7,900,000 |
| Interest of Debt | 6,069,472 |
| Dues and Fees/other | <u>4,500</u> |
| TOTAL APPROPRIATED | 13,973,972 |

**NOVI COMMUNITY SCHOOL DISTRICT
2008-09 BUDGET
General Appropriations Act**

BE IT FURTHER RESOLVED, that the total revenues and unappropriated fund balance estimated to be available for appropriations in the **Sinking Fund** of the Novi Community School District for the fiscal year June 30, 2009 is as follows:

REVENUE:

| | |
|---------------------------------------|------------------|
| Property Tax | 1,141,063 |
| Interest | 12,000 |
| Other | <u>0</u> |
| TOTAL REVENUE: | 1,153,063 |
| Unappropriated Fund Balance | <u>(639,063)</u> |
| TOTAL AVAILABLE TO APPROPRIATE | 514,000 |

BE IT FURTHER RESOLVED, that of the total available to appropriate in the **Sinking Fund** is hereby appropriate in the amounts and for the purposes set forth below:

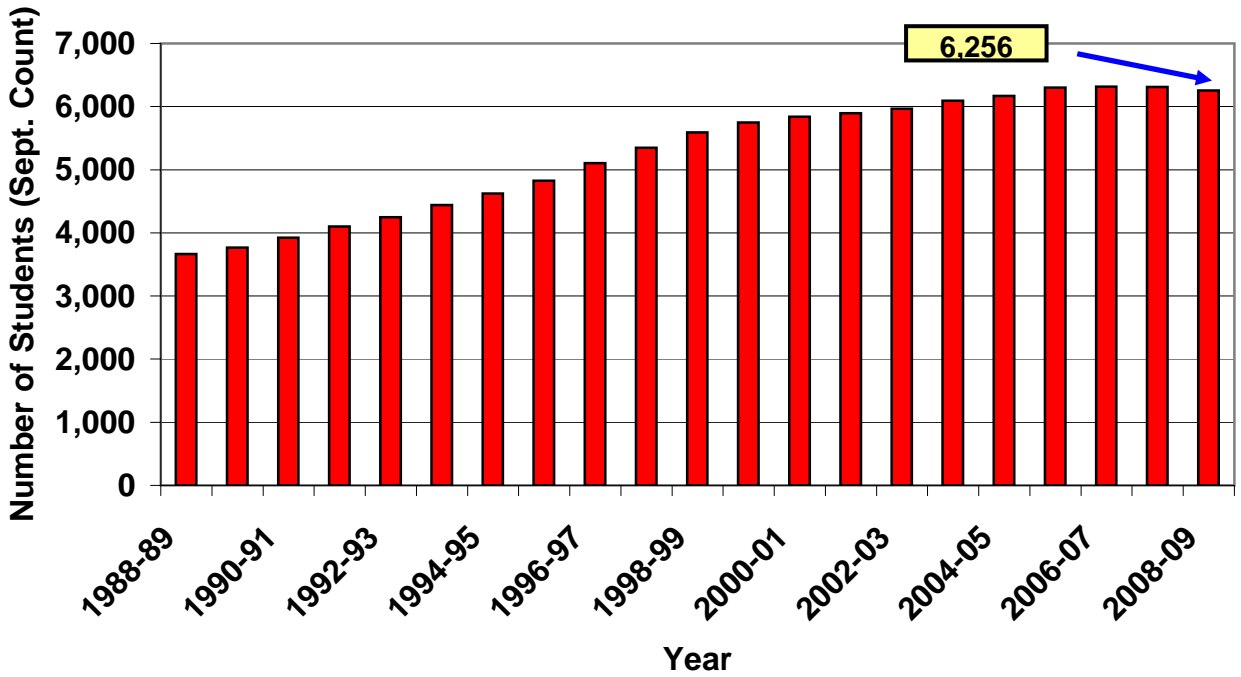
EXPENDITURES:

| | |
|---------------------------|----------------|
| Maintenance & Repair | <u>514,000</u> |
| TOTAL APPROPRIATED | 514,000 |

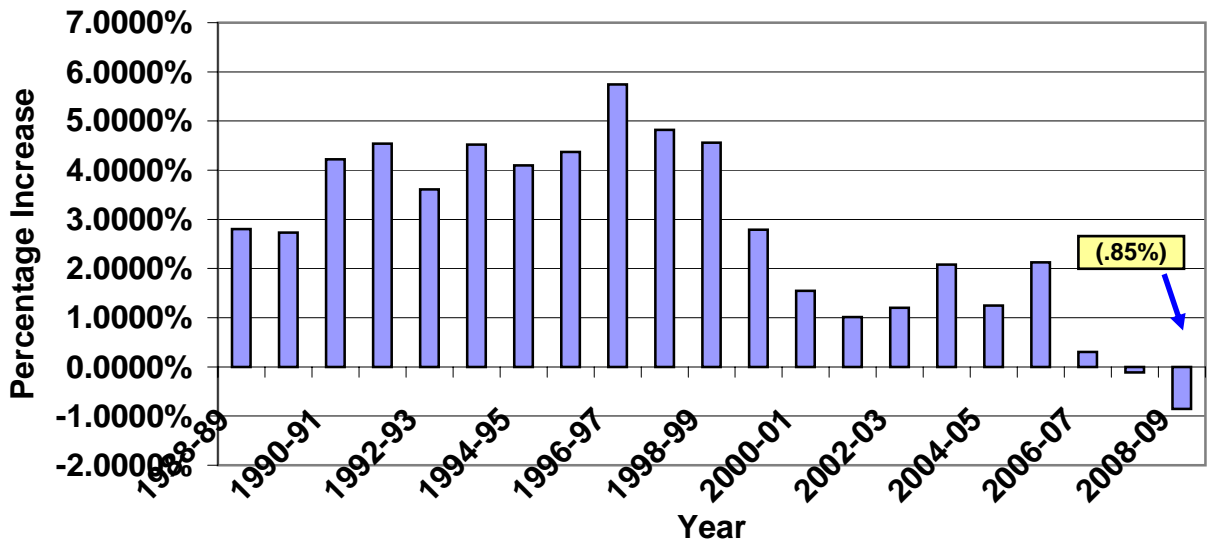
| |
|------------------|
| Approved: |
| 19-Jun-08 |
| Amended: |
| |

NOVI COMMUNITY SCHOOL DISTRICT

Student Enrollment History

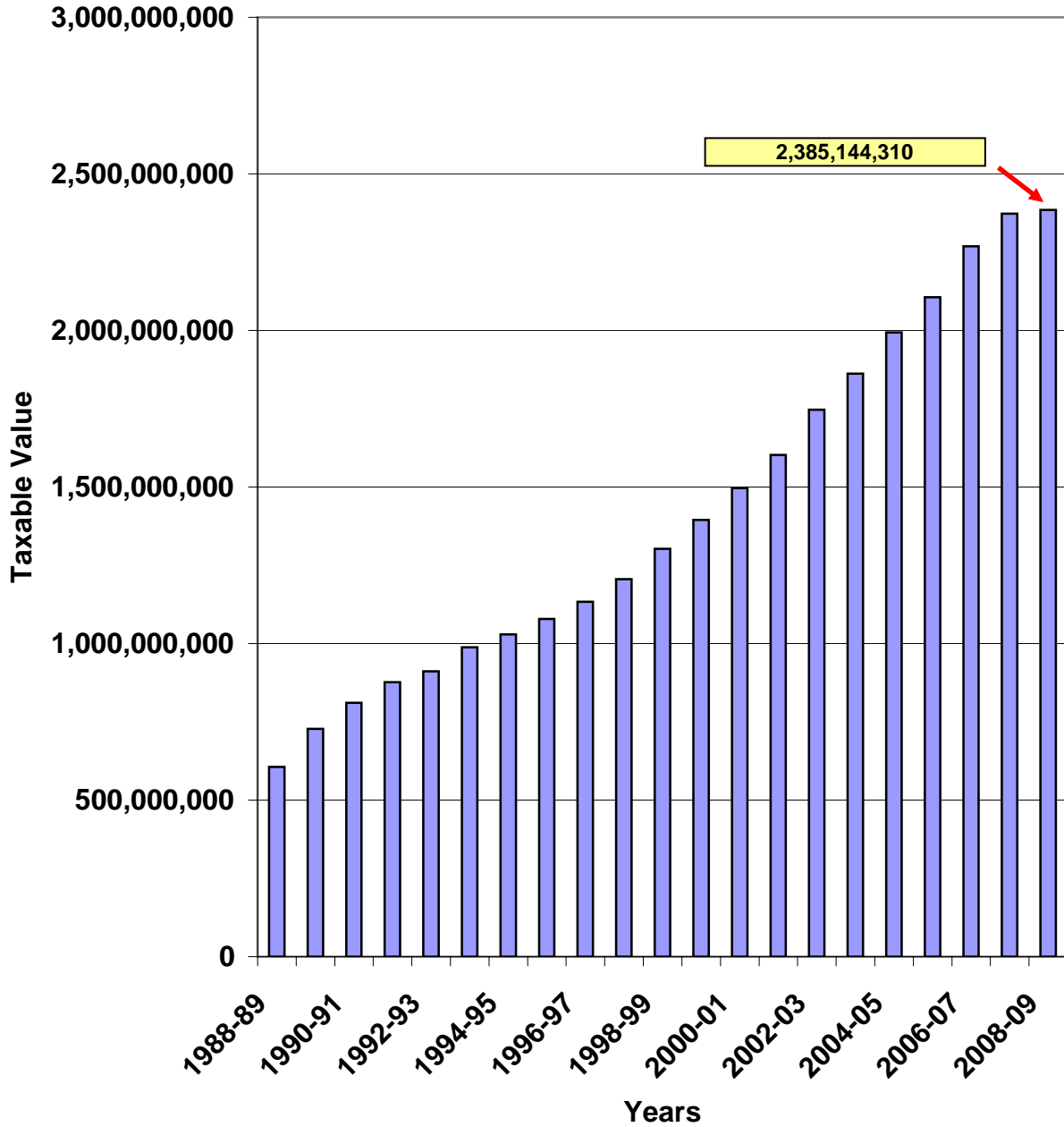


Annual Percentage Increase of Student Enrollment



NOVI COMMUNITY SCHOOL DISTRICT

Taxable Value History



NOVI COMMUNITY SCHOOL DISTRICT

General Fund Millage History

