

June 2019

Dear Students,

Welcome to AP Calculus! I can't wait to start the year with all of you and have my eye on the prize; Tuesday May 5, 2020 at 8 a.m.! It seems like a lifetime from now, but it will be here before we know it. You will be sitting for the AP exam, well rested, well prepared and ready to take on the world.

Looking toward our year together, I am sending a small packet of problems for you to do before school begins. I hope the problems will help us all hit the ground running in September. Please do NOT attempt to do all of the work on the night before school begins. You won't have enough time to ask questions or complete the work carefully and late work is unacceptable. As will be the policy next year, you will not have the opportunity to correct assignments, so please submit the good work that I know you are capable of doing. You would not be signed up for this course if someone did not think you could do it. I have faith in you!

The problems will be **due on the first day of class** and these assignments will be part of your first grades of the quarter. If you need any guidance, please contact me via e-mail or speak with a classmate. You must submit your own work, as you will all year, but you may benefit from discussing the material with your peers. Discussing problems and strategies does NOT mean copying each other's work. This is NEVER acceptable! Yes I will be grading these.

Calculus may be my favorite course to teach and I am looking forward to walking through many doors with you.

Please feel free to contact me with any questions or concerns and get ready for an exciting year!

Sincerely,

Mr. Vuckovich

dvuckovich@gbwl.org

Assignment 1

1. Simplify the following: (no negative or zero exponents in final answer)

a. $\frac{x^3}{x^{-5}}$	b. $\frac{2x^3}{y^{-5}} \cdot \frac{y^2}{3x^7}$	c. $x^{\frac{1}{3}} \cdot x^{\frac{3}{5}}$
-------------------------	---	--

2. Multiply $(x + 2)^2$

3. Simplify $\frac{x-4}{4-x}$

4. Simplify $\frac{x^2 - 4x - 5}{x^2 + 2x + 1}$

5. Given the point $P\left(-1, \frac{4}{3}\right)$

- Find an equation for the vertical line through P .
- Find an equation for the horizontal line through P .

6. Write the point-slope equation for the line through $P(0,3)$ with slope, $m = 2$.

7. Write the slope-intercept equation for the line with slope $m = \frac{1}{3}$ and y -intercept $b = -1$.

8. Write a general linear equation for the line through the two points $(-2, 1)$ and $(2, -2)$.

9. Use the x - and y -intercepts to graph the line $3x + 4y = 12$. Label the graph, including the intercepts.

10. Given $P(-2,4)$ and the line $L: x = 5$

- Write an equation for the line through P that is parallel to L
- Write an equation for the line through P that is perpendicular to L

11. Write an equation for the line with x -intercept 3 and y -intercept -5.

12. Write an equation for the line $y = f(x)$, where f has the following values

x	-2	2	4
$f(x)$	4	2	1

Assignment 2

Solve each equation for all real values of x . (check for extraneous solutions in # 1, 4, and 5)

1. $\frac{2}{x+1} = \frac{x-2}{2}$

2. $x^2 - 9x + 9 = 0$

3. $\frac{1}{x} + x = 4$

4. $\frac{5}{e^x + 1} = 1$

5. $\sqrt{x-1} - \frac{5}{\sqrt{x-1}} = 0$

6. Given $f(x) = 3x^2 - x - 1$, find $f(0)$ and $f(-2)$.

7. Is $x = -1$ a zero of the function $p(x) = x^3 - 3x^2 - x + 3$? Why or why not?

8. The sides of a rectangle are x and $3 - 2x$.

- Express the rectangle's area as a function of x .
- Express the rectangle's perimeter as a function of x .
- Explain why x cannot equal 2.

9. The height and diameter of a cylinder are equal. Express the volume of the cylinder as a function of its radius.

10. Find the average rate of change of $f(x) = 3\sqrt{x}$ (or if you prefer to think of it as the slope of the secant line) over the interval $[4, 25]$

11. A car travels 297 miles in a period of 270 minutes. Find the average velocity of the car in miles per hour over this time period. (Observe that your answer should be in miles/hour and you are given information in units of minutes. A change of units will be necessary. Also recall that the average velocity is the average rate of change in position with respect to time, that is, change in distance divided by time elapsed.)

Assignment 3

1. Determine if the function is even or odd algebraically. That means look at $f(-x)$.

a. $f(x) = x^4$

b. $f(x) = x + 2$

Use interval notation to express the domain and range.

2. Given $y = 4 - x^2$

- Find the domain
- Find the range
- Sketch the graph

3. Given $y = \sqrt{x-1}$

- Find the domain
- Find the range
- Sketch the graph

4. Given $y = \frac{1}{x+3}$

- Find the domain
- Find the range
- Sketch the graph

5. Given $y = |x+4| - 3$

- Find the domain
- Find the range
- Sketch the graph

6. Graph both functions $f(x) = \frac{x^2 - 9}{x - 3}$ and $g(x) = x + 3$

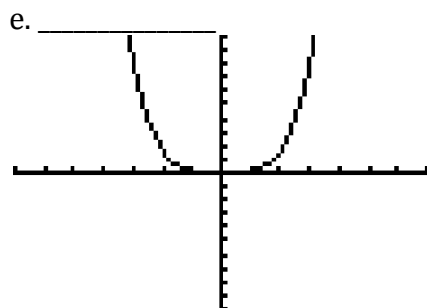
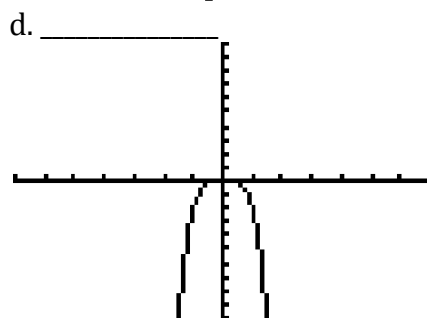
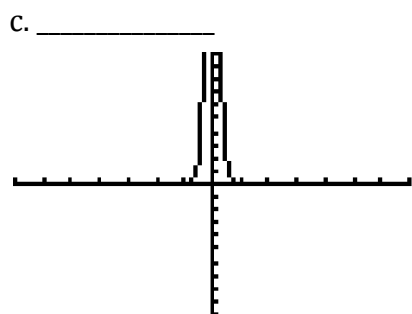
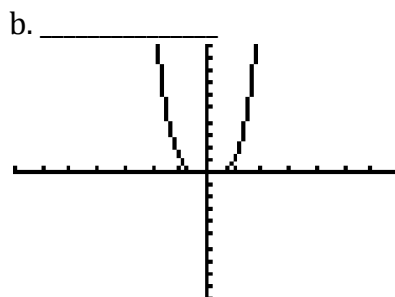
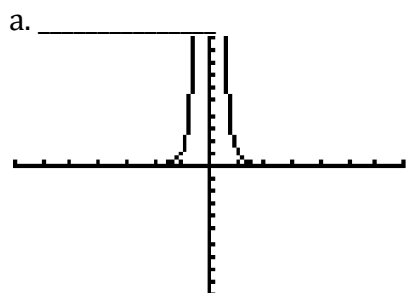
- Are the domains equal?
- Does f have a vertical asymptote? Explain.
- Explain why the graphs appear to be identical. Describe their differences.
- Are the functions identical? Explain why.

7. Sketch the graph of the piecewise function

$$f(x) = \begin{cases} 3 - x & , \quad x \leq 1 \\ 2x & , \quad 1 < x \end{cases}$$

8. Without using a graphing calculator, match the graphs with their functions listed below and right $i - v$. Each viewing window is $[-7, 7]$ by $[-10, 10]$

(You don't need to reproduce the graphs, this time, and this time ONLY; just write the answers.)



i. $f(x) = x^{-4}$

ii. $f(x) = -2x^4$

iii. $f(x) = \left(\frac{1}{10}\right)x^{-4}$

iv. $f(x) = x^4$

v. $f(x) = \left(\frac{1}{10}\right)x^4$

Assignment 4

1. Sketch the graphs of $y = 2^x$ and $y = \log_2 x$. Label your graphs clearly including asymptotes and at least two points on EACH graph.
2. Find the domain of $y = -3 \log(x + 2)$. Tell what the “parent” function is and how the graph of this function relates to it in terms of shifts, stretches and reflections. You need NOT graph it, just describe the graph.
3. Use properties of exponents to decide which pair of functions are identical: $y_1 = 3^{2x+4}$, $y_2 = 3^{2x} + 4$,
 $y_3 = 9^{x+2}$
4. Complete the statement to illustrate the property of logarithms
 - a. Product rule: $\log_3 5x =$ _____
 - b. Quotient rule: _____ = $\log y - \log 17$
 - c. Power rule: $\ln 2^{-5} =$ _____
5. If possible, find a pair of numbers x and y such that $xy = 6$ but it is not true that $\ln 6 = \ln x + \ln y$
6. Use properties of logarithms to expand $\log_3 (a^2 \sqrt{b})^4$
7. Use properties of logarithms to condense $3 \log_4 x + \frac{1}{2} \log_4 x^2$. Assume $x > 0$
8. Solve each equation

a. $4^{1-2x} = 2$	b. $\log_x 64 = -3$	c. $\log_3 \sqrt{x-2} = 2$
d. $25^{2x} = 5^{x^2-12}$	e. $9^{2x} = 27^{3x-4}$	f. $2^{x-1} \cdot 8^{-x} = 4$

9. Given $f(x) = x^3 - 1$, find $f^{-1}(x)$ and verify that $(f^{-1} \circ f)(x) = (f \circ f^{-1})(x) = x$

Assignment 5

1. Draw a $30^0-60^0-90^0$ triangle. Let the hypotenuse have length 2. Find the lengths of the other two sides.
2. Draw a $45^0-45^0-90^0$ triangle. Let the hypotenuse have length $\sqrt{2}$. Find the lengths of the other two sides.
3. Convert each angle in degrees to radians. Express your answer as a multiple of π .

135°

210°

18°

15°

4. Convert each angle in radians to degrees.

$\frac{5\pi}{4}$

$\frac{2\pi}{3}$

$-\frac{5\pi}{2}$

$-\frac{3\pi}{2}$

5. $\sin^{-1}\left(\frac{\sqrt{3}}{2}\right) =$

6. $\cos^{-1}\left(-\frac{\sqrt{3}}{2}\right) =$

7. $\tan^{-1}(1) =$

Solve each equation on the interval $0 \leq \theta < 2\pi$

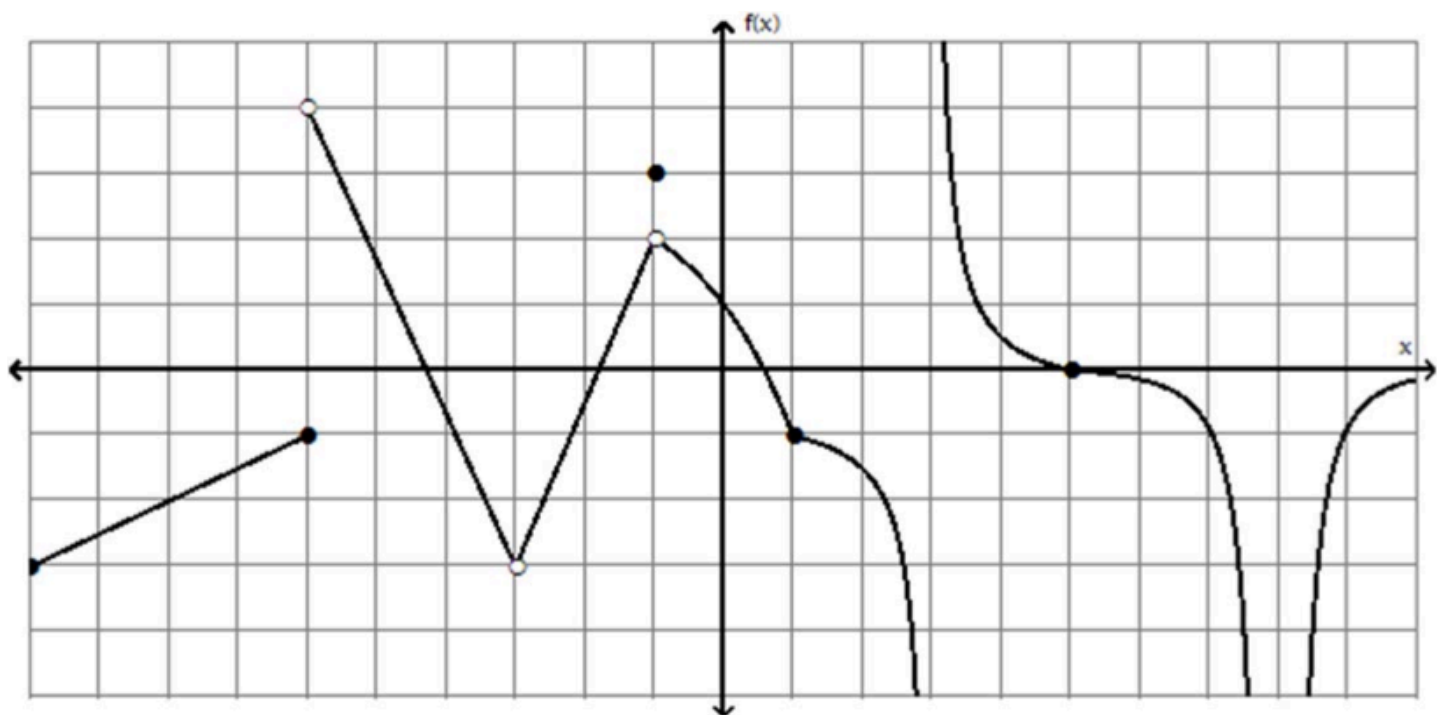
8. $\cos \theta = \frac{1}{2}$

9. $\sin(2\theta) + 1 = 0$

10. $2 \cos \theta + \sqrt{2} = 0$

11. Sketch one period of the graph of $y = \sin(2x)$

12. Sketch two periods of the graph of $y = 2 \tan x$



For 13-17, use the graph above.

13. $\lim_{x \rightarrow 0} f(x) =$ 14. $\lim_{x \rightarrow -6^+} f(x) =$ 15. $\lim_{x \rightarrow -1} f(x) =$

16. For what values of x would the limit of $f(x)$ not exist?

17. What value for $f(-3)$ would make f continuous at $x = -3$

18. Determine where f is discontinuous. Be sure to support your answer with work.

$$f(x) = \begin{cases} -4, & x \leq 3 \\ x - 7, & 3 < x < 5 \\ x^2 - 10, & x \geq 5 \end{cases}$$

19. $\lim_{x \rightarrow 2^-} \frac{x+2}{x-2}$

20. $\lim_{x \rightarrow 0} \frac{x^2 - 3x}{x}$