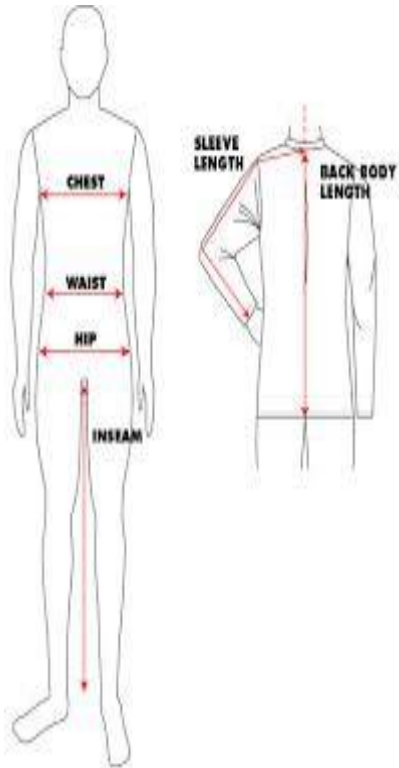


UNIFORM PRE-ORDER REQUEST FORM



CAMPBELL
COLLEGE

Est 1894



Collar:

Measure around base of neck, just below adam’s apple allowing for comfortable fit, about a finger width of room.

Chest:

Measure under arms around the fullest part of the chest.

Waist:

Bend to one side-the natural crease that appears is your waist. Standing straight, measure around your natural waistline.

Sleeves:

With your arms relaxed at your sides and elbows slightly bent, measure from the beginning of your shoulder tip down the outside of arm past elbows to your cuff.

Shoulder to Shoulder:

Measure from the tip of one shoulder, horizontally across the back, to the tip of the other shoulder.

Hips:

Place the measuring tape around the body to the fullest part of the lower hip, feet together.

Inseam:

Without shoes, measure the inside of one leg, from crotch to the floor.

ITEM	Nos Required	Measurements
Blazer #		
Black school trousers		
Black V-neck pullover		
White shirts		
School House ties #		
CCB Raincoat *		
CCB Black PE T-shirt #		
CCB Black PE shorts #		
CCB Black Rugby Jersey *		
CCB Black Rugby shorts *		
CCB Tracksuit *		
CCB Hoody *		

Basic items (e.g. trousers, shirts) can be purchased from any high street store. Items marked with an asterisk (*) are *only* available from the College shop. Items marked with a hash tag (#) are *essential* and *only* available from the College shop.