

# SARC

2017-18 School Accountability  
Report Card

Published in 2018-19



## Wanda Hirsch Elementary School

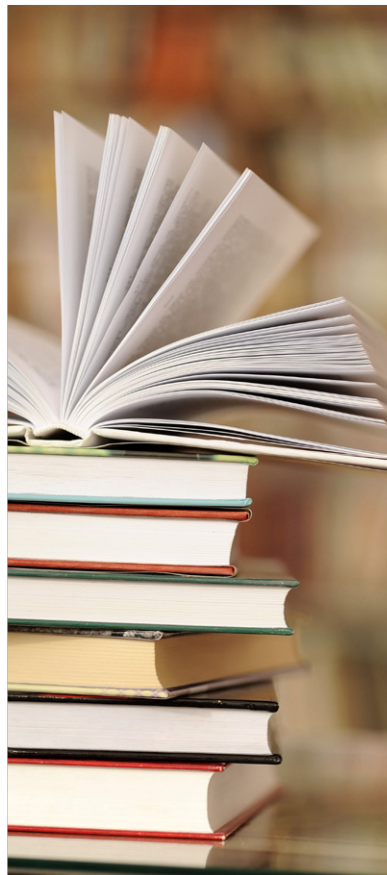
Grades TK-5  
CDS Code 39-75499-6114490

Cindy Sasser  
Principal  
[csasser@tusd.net](mailto:csasser@tusd.net)

1280 Dove Drive  
Tracy, CA 95376  
(209) 830-3312

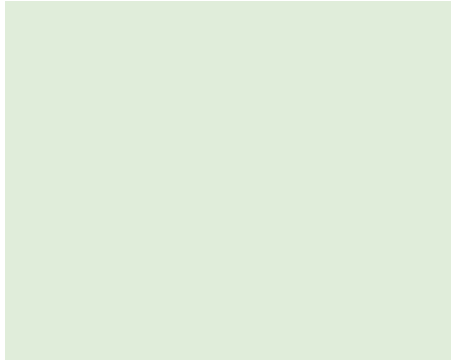
[www.tracy.k12.ca.us/sites/hes](http://www.tracy.k12.ca.us/sites/hes)

Para español, visita  
[www.tracy.k12.ca.us](http://www.tracy.k12.ca.us)



## Tracy Unified School District

1875 West Lowell Avenue Tracy, CA 95376 ▪ [www.tracy.k12.ca.us](http://www.tracy.k12.ca.us)  
Brian Stephens, Superintendent ▪ [bstephens@tusd.net](mailto:bstephens@tusd.net) ▪ (209) 830-3200





## Principal's Message

Dear parents and students,

Welcome to Wanda Hirsch Elementary School! Hirsch is a preschool through fifth-grade neighborhood school built in 1997. Our school has been serving families for 21 years.

Our school community is proud that Hirsch was recognized in 2002, 2004 and 2010 as a California Distinguished School. The programs at Hirsch focus on academic achievement and promote a positive school climate. It is the goal of the school to ensure that each student is a competent reader, writer and mathematician, meeting or exceeding grade-level standards. The school has many programs to assist general and special education students, as well as our English language learners. Our staff members have high expectations that students will be successful as lifelong learners and researchers, and have the ability to work collaboratively with others. Teacher teams collaborate and use data to set goals and improve teaching and learning, expanding the curriculum to recognize the increased expectations of science, technology and society upon our young people.

Hirsch is a cohesive partnership of students, parents, educators and community members. We take pride in providing a quality education in a caring, supportive and challenging environment. The results of our expectations for student achievement are evident in the outstanding academic performance of our students. Our community embraces the concept that integrity and compassion are part of daily life. Follow Wanda Hirsch Elementary School on Facebook at [www.facebook.com/WandaHirschElementarySchool](http://www.facebook.com/WandaHirschElementarySchool) for school updates, special announcements and events around campus.

Students are taught and model the Six Pillars of Character: trustworthiness, respect, responsibility, fairness, caring and citizenship. Students serve on Student Council and plan activities. Hirsch has many extracurricular activities for students, including Chess Club, noon sports program, after-school basketball, Turkey Trot, science challenges, science fair, spelling bee and our annual talent show. The school mascot is the Patriot.

Sincerely,

Cindy Sasser

Principal

## School Mission Statement

With integrity and compassion, Wanda Hirsch Elementary School promotes a commitment to personal academic excellence, while empowering each individual to strive for and embrace the character, knowledge and problem-solving skills necessary to facilitate positive changes in our diverse world.

## Parental Involvement

Hirsch Elementary promotes a sense of community within the school by encouraging parent involvement in all areas of the school: classroom volunteering, participation in the School Site Council, District Language Acquisition Committee and Hirsch Parent Teacher Organization (HPTO).

Parents have taken an active role in determining the school goals and identifying supportive programs and activities. The School Site Council meets each month to review school goals, programs and activities. The Hirsch Parent Teacher Organization volunteers and coordinates fundraising efforts to help support programs such as field trips, Accelerated Reader, noon sports and assemblies.

The HPTO encourages families to attend family movie nights and family dances, which are fun and well attended. The staff invited more than 90 parents to an end-of-the-year appreciation tea to recognize them for their outstanding efforts and contributions. Formal parent conferences are held at the end of the first report period. A series of minimum days are scheduled in order to allow sufficient time for parents to meet with teachers.

Proud Patriot Assembly, honor roll assemblies, the talent show, Family Science Night, Multicultural Fair, ice cream social, and our Annual Night of Character are all examples of opportunities for parents to participate in school events.

Information is posted in our school newsletter, on the marquee, on our Facebook page and school website. Hirsch also uses School Messenger communications system to phone and text families to make them aware of important upcoming events.

Please call our school office at (209) 830-3312 or come in and speak with Mrs. Phenix, our school secretary, if you are interested in getting more information on how you can be an active participant in your child's education.

## School Accountability Report Card

In accordance with state and federal requirements, the School Accountability Report Card (SARC) is put forth annually by all public schools as a tool for parents and interested parties to stay informed of the school's progress, test scores and achievements.



*"The future belongs to the educated."*

**TRACY**  
UNIFIED SCHOOL DISTRICT

## District Mission Statement

Tracy Unified School District prepares our diverse student population to be college and career ready for the 21st century by providing a quality-learning environment in safe, modern facilities equipped with the latest technological tools. Our culturally proficient world-class staff empowers students to reach their fullest potential and prepares students to solve real-world problems by utilizing best instructional practices and collaborating with the community, businesses and institutions of higher learning.

## District Vision Statement

All students in Tracy Unified School District will become lifelong learners, responsible citizens, and leaders in the 21st century.

## Board of Trustees

Steve Abercrombie, President

Brian Pekari, Vice President

Jill Costa, Board Clerk

Simran Kaur, Member

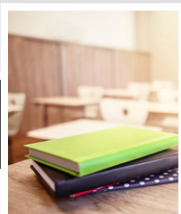
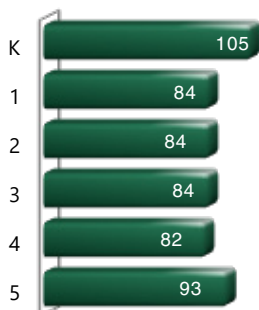
Ameni Alexander, Member

Lori Souza, Member

## Enrollment by Grade

The bar graph displays the total number of students enrolled in each grade for the 2017-18 school year.

2017-18 Enrollment by Grade



## Suspensions and Expulsions

This table shows the school, district, and state suspension and expulsion rates for the most recent three-year period. Note: Students are only counted one time, regardless of the number of suspensions.

Suspension and Expulsion Rates

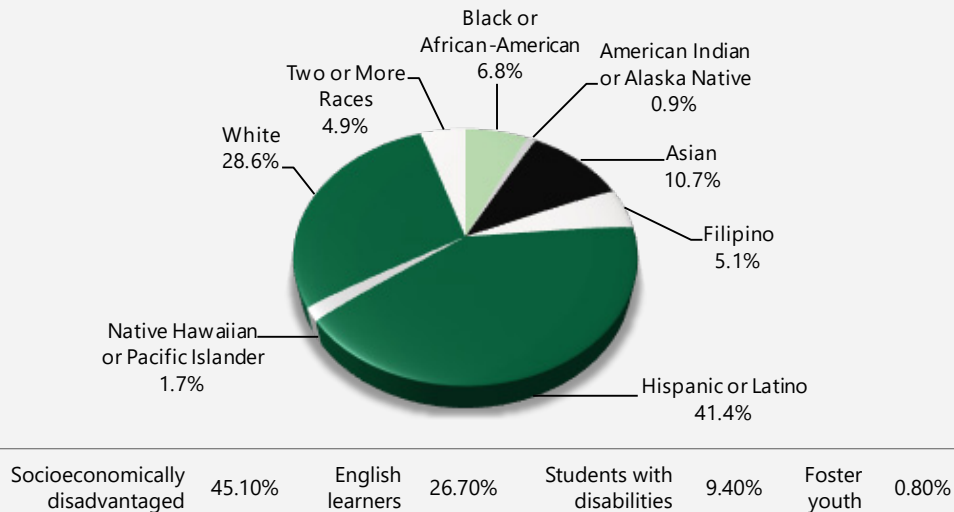
Hirsch ES			
	15-16	16-17	17-18
Suspension rates	1.2%	1.6%	1.5%
Expulsion rates	0.2%	0.0%	0.0%
Tracy USD			
	15-16	16-17	17-18
Suspension rates	7.6%	10.5%	8.3%
Expulsion rates	0.6%	0.6%	0.7%
California			
	15-16	16-17	17-18
Suspension rates	3.7%	3.6%	3.5%
Expulsion rates	0.1%	0.1%	0.1%

## Enrollment by Student Group

The total enrollment at the school was 532 students for the 2017-18 school year. The pie chart displays the percentage of students enrolled in each group.

Demographics

2017-18 School Year

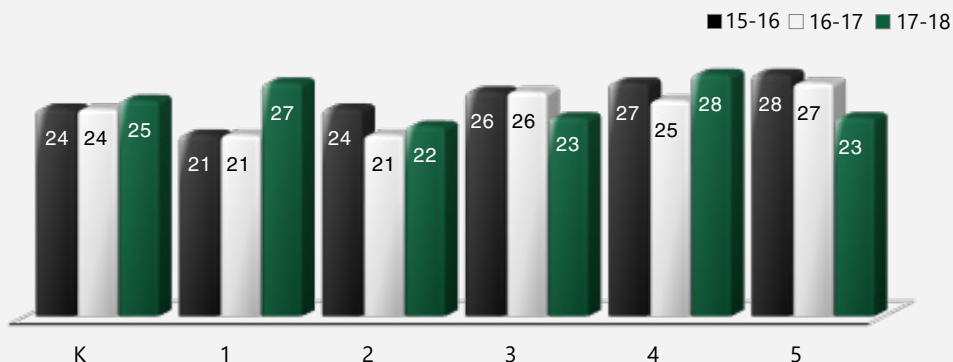


## Class Size Distribution

The bar graph displays the three-year data for average class size, and the table displays the three-year data for the number of classrooms by size. The number of classes indicates how many classrooms fall into each size category (a range of total students per classroom). At the secondary school level, this information is reported by subject area rather than grade level.

Average Class Size

Three-Year Data



Number of Classrooms by Size

Three-Year Data

	2015-16			2016-17			2017-18		
Grade	Number of Students								
	1-20	21-32	33+	1-20	21-32	33+	1-20	21-32	33+
K	1	3		1	3			4	
1	1	3		2	2			4	
2		3		2	2			4	
3		4			3			4	
4		3		1	3			4	
5		4		1	3			4	

## CAASPP Test Results for All Students: Science (grades 5, 8 and 10)

The 2016–17 and 2017–18 data are not available. The California Department of Education is developing a new science assessment based on the Next Generation Science Standards for California Public Schools (CA NGSS). The California Science Test (CAST) was pilot-tested in spring 2017 and field-tested in spring 2018. The CAST will be administered operationally during the 2018–19 school year. The CAA for Science was pilot-tested for two years (i.e., 2016–17 and 2017–18) and the CAA for Science will be field-tested in 2018–19.

Percentage of Students Scoring at Proficient or Advanced					Two-Year Data	
	Hirsch ES		Tracy USD		California	
Subject	16-17	17-18	16-17	17-18	16-17	17-18
Science	✧	✧	✧	✧	✧	✧

## CAASPP Test Results for All Students: English Language Arts/Literacy and Mathematics (grades 3-8 and 11)

The table below shows the percentage of students meeting or exceeding the state standards in English language arts (ELA)/literacy and mathematics.

Percentage of Students Meeting or Exceeding State Standards					Two-Year Data	
	Hirsch ES		Tracy USD		California	
Subject	16-17	17-18	16-17	17-18	16-17	17-18
English language arts/literacy	47%	56%	41%	42%	48%	50%
Mathematics	39%	40%	29%	30%	37%	38%

## California Physical Fitness Test

Each spring, all students in grades 5, 7 and 9 are required to participate in the California Physical Fitness Test (PFT). The Fitnessgram is the designated PFT for students in California public schools put forth by the State Board of Education. The PFT measures six key fitness areas:

1. Aerobic Capacity
2. Body Composition
3. Flexibility
4. Abdominal Strength and Endurance
5. Upper Body Strength and Endurance
6. Trunk Extensor Strength and Flexibility

Encouraging and assisting students in establishing lifelong habits of regular physical activity is the primary goal of the Fitnessgram. The table shows the percentage of students meeting the fitness standards of being in the "healthy fitness zone" for the most recent testing period. For more detailed information on the California PFT, please visit [www.cde.ca.gov/ta/tg/pf](http://www.cde.ca.gov/ta/tg/pf).

California Physical Fitness Test		2017-18 School Year
Percentage of Students Meeting Fitness Standards		Hirsch ES
		Grade 5
Four of six standards		20.00%
Five of six standards		21.10%
Six of six standards		7.80%

✧ Not applicable.

## California Assessment of Student Performance and Progress (CAASPP)

For the 2017-18 school year, the CAASPP consists of several key components, including:

**California Alternate Assessments (CAA)** test includes both ELA/literacy and mathematics in grades 3-8 and 11. The CAA is given to those students with the most significant cognitive disabilities whose current individualized education program (IEP) designates an alternate assessment.

**Smarter Balanced Assessments** include ELA/literacy and mathematics in grades 3-8 and 11. Smarter Balanced Assessments are designed to measure student progress toward college and career readiness.

The assessments under CAASPP show how well students are doing in relation to the state-adopted content standards. On each of these assessments, student aggregate scores are reported as achievement standards. For more information on the CAASPP assessments, please visit [www.cde.ca.gov/ta/tg/ca](http://www.cde.ca.gov/ta/tg/ca).



## CAASPP by Student Group: English Language Arts/Literacy and Mathematics

The table on the following page displays the percentage of students that met or exceeded state standards in English language arts/literacy and mathematics for the school by student groups for grades 3-5.

The "percentage met or exceeded" is calculated by taking the total number of students who met or exceeded the standard on the Smarter Balanced Summative Assessment plus the total number of students who met the standard on the CAA divided by the total number of students who participated in both assessments.

Note: The number of students tested includes all students who participated in the test whether they received a score or not. However, the number of students tested is not the number that was used to calculate the achievement level percentages. The achievement level percentages are calculated using only students who received scores.

## CAASPP Results by Student Group: English Language Arts and Mathematics (grades 3-5)

Percentage of Students Meeting or Exceeding State Standards				2017-18 School Year
English Language Arts				
Group	Total Enrollment	Number Tested	Percentage Tested	Percentage Met or Exceeded
All students	253	248	98.02%	56.05%
Male	122	120	98.36%	50.83%
Female	131	128	97.71%	60.94%
Black or African-American	15	15	100.00%	33.33%
American Indian or Alaska Native	❖	❖	❖	❖
Asian	33	32	96.97%	53.13%
Filipino	12	12	100.00%	83.33%
Hispanic or Latino	104	102	98.08%	49.02%
Native Hawaiian or Pacific Islander	❖	❖	❖	❖
White	72	70	97.22%	65.71%
Two or more races	❖	❖	❖	❖
Socioeconomically disadvantaged	112	108	96.43%	47.22%
English learners	74	72	97.30%	37.50%
Students with disabilities	30	30	100.00%	33.33%
Students receiving Migrant Education services	❖	❖	❖	❖
Foster youth	❖	❖	❖	❖
Mathematics				
Group	Total Enrollment	Number Tested	Percentage Tested	Percentage Met or Exceeded
All students	253	249	98.42%	40.16%
Male	122	121	99.18%	43.80%
Female	131	128	97.71%	36.72%
Black or African-American	15	15	100.00%	33.33%
American Indian or Alaska Native	❖	❖	❖	❖
Asian	33	33	100.00%	51.52%
Filipino	12	12	100.00%	58.33%
Hispanic or Latino	104	102	98.08%	28.43%
Native Hawaiian or Pacific Islander	❖	❖	❖	❖
White	72	70	97.22%	47.14%
Two or more races	❖	❖	❖	❖
Socioeconomically disadvantaged	112	109	97.32%	28.44%
English learners	74	73	98.65%	31.51%
Students with disabilities	30	30	100.00%	16.67%
Students receiving Migrant Education services	❖	❖	❖	❖
Foster youth	❖	❖	❖	❖

❖ Scores are not shown when the number of students tested is 10 or fewer, either because the number of students tested in this category is too small for statistical accuracy or to protect student privacy.

## Textbooks and Instructional Materials

Textbook-selection committee members are volunteers from each school site, balanced by grade band (K-2, 3-5, 6-8 and 9-12). They receive ongoing training in standards related to that content area before an adoption cycle begins. After extensive review and piloting, the textbook-selection committee members vote to recommend one text to the district's Curriculum Council. The council, which consists of members from each school site and including some site administrators, reviews the recommendation and then recommends a textbook to the school board.

Our most recent public hearing to adopt a resolution on the sufficiency of instructional materials was in September 2018.

The district chose its most recently adopted textbooks (English language arts) using the state-approved list. The textbook content fits within the curriculum framework adopted by the California State Board of Education (SBE). The district is in the process of evaluating and selecting history-social studies instructional materials for grades 6-8 using the state-approved list for grades 6-8.

Textbooks and Instructional Materials List		2018-19 School Year
Subject	Textbook	Adopted
Reading/language arts	Wonders (TK-5 tradition)	2017
Mathematics	My Math, McGraw-Hill (K-5 traditional)	2014
Science	California Science (K-5)	2008
History/social science	Scott Foresman History-Social Science for California (K-5)	2007

## Availability of Textbooks and Instructional Materials

The following lists the percentage of pupils who lack their own assigned textbooks and instructional materials.

Percentage of Students Lacking Materials by Subject		2018-19 School Year
Hirsch ES	Percentage Lacking	
Reading/language arts	0%	
Mathematics	0%	
Science	0%	
History/social science	0%	
Visual and performing arts	✧	
Foreign language	✧	
Health	✧	

## Public Internet Access

Internet access is available at public libraries and other locations that are publicly accessible (e.g., the California State Library). Access to the internet at libraries and public locations is generally provided on first-come, first-served basis. Other use restrictions include the hours of operation, the length of time that a workstation may be used (depending on availability), the types of software programs available at a workstation, and the ability to print documents.

✧ Not applicable.

## Quality of Textbooks

The following table outlines the criteria required for choosing textbooks and instructional materials.

Quality of Textbooks	
2018-19 School Year	
Criteria	Yes/No
Are the textbooks adopted from the most recent state-approved or local governing-board-approved list?	Yes
Are the textbooks consistent with the content and cycles of the curriculum frameworks adopted by the State Board of Education?	Yes
Do all students, including English learners, have access to their own textbooks and instructional materials to use in class and to take home?	Yes

## Currency of Textbooks

This table displays the date when the most recent hearing was held to adopt a resolution on the sufficiency of instructional materials.

Currency of Textbooks	
2018-19 School Year	
Data collection date	9/28/2018





## School Safety

Student safety is a priority at Hirsch Elementary. Each year the school's safety plan is reviewed and updated. Staff and students participate in monthly fire drills. The school conducts earthquake drills each quarter. Each classroom is equipped with an emergency-response backpack and bucket containing items deemed necessary in the event of an emergency.

All visitors to the school must sign in at the office, and all staff members wear badges. New fencing and gates surround the school site for additional safety and security. There are 20 security cameras located throughout the school. A positive school climate and safety are of upmost importance. The district Elementary School Handbook and education code are followed. Inappropriate student conduct is not tolerated. Results from the school surveys indicate that staff, students and parents agree that Hirsch is safe and has a positive climate. Students demonstrating good character are acknowledged on a regular basis.

The school safety plan is reviewed, updated and discussed with the school faculty each year; it was last done in January 2019.



## Types of Services Funded

About 58 percent of the district's income is spent on employee salaries, and 23 percent is spent on employee benefits. Books and supplies account for 10 percent of the district's spending, an additional 10 percent is dedicated to services and operating costs, three percent is used for capital outlay, and two percent is spent on other district outgo. Expenditures are expected to exceed revenues by approximately five percent.

All of our Kindergarten through third grade classes comply with the California Class Size Reduction program limits. We offer a Bilingual Education and a GATE program at South/West Park Elementary School. We provide special programs at our high schools that include Agricultural Career Technical Education, a Space and Engineering Academy, a Medical And Health Services Academy.

## School Facility Good Repair Status

The table shows the results of the school's most recent inspection using the Facility Inspection Tool (FIT) or equivalent school form. This inspection determines the school facility's good repair status using ratings of good condition, fair condition or poor condition. The overall summary of facility conditions uses ratings of exemplary, good, fair or poor. At the time of this school facility inspection, no deficiencies were found.

School Facility Good Repair Status		2018-19 School Year
Items Inspected	Repair Status	
<b>Systems:</b> Gas leaks, sewer, mechanical systems (heating, ventilation and HVAC)	Good	
<b>Interior:</b> Interior surfaces (floors, ceilings, walls and window casings)	Good	
<b>Cleanliness:</b> Pest/vermin control, overall cleanliness	Good	
<b>Electrical:</b> Electrical systems	Good	
<b>Restrooms/fountains:</b> Restrooms, sinks and drinking fountains	Good	
<b>Safety:</b> Fire safety, emergency systems, hazardous materials	Good	
<b>Structural:</b> Structural condition, roofs	Good	
<b>External:</b> Windows/doors/gates/fences, playgrounds/school grounds	Good	
<b>Overall summary of facility conditions</b>	Good	
<b>Date of the most recent school site inspection</b>	7/13/2018	
<b>Date of the most recent completion of the inspection form</b>	7/13/2018	

## School Facilities

### General

The Tracy Unified School District takes great efforts to ensure that all schools are clean, safe and functional. To assist in this effort, the district uses a facility survey instrument developed by the State of California Office of Public School Construction. The results of this survey are available at the district office located at 1875 West Lowell Avenue in Tracy, California.

Below is more specific information on the condition of Wanda Hirsch Elementary School for the 2018-19 school year and the efforts made to ensure that students are provided with a clean, safe and functional learning environment.

### Age of School/Buildings

This school has 32 classrooms, a multipurpose room, library, administration building, stage and kitchen. The main campus was built in 1997. Additions were constructed in the 1997-98 school year (two classrooms added for Class Size Reduction), 1998-99 (four classrooms added for Class Size Reduction), 2005-06 (two state relocatable classrooms) and 2016 (window systems, intrusion alarm system).

### Maintenance and Repair

District maintenance staff ensures that the repairs necessary to keep the school in good repair and working order are completed in a timely manner. A work-order process is used to ensure efficient service and that emergency repairs are given the highest priority.

### Cleaning Process and Schedule

The district governing board has adopted cleaning standards for all schools in the district. A summary of these standards is available at the district office. The principal works daily with the custodial staff to develop cleaning schedules to ensure a clean and safe school.

### Deferred Maintenance Budget

In accordance with Chapter 12, Statutes of 2009 (SBX3 4), the district has elected to use the flexibility clause. The clause allows the district to use the state-deferred maintenance contribution as well as the district's matching share contribution toward "any educational purpose." The district has elected to commit deferred maintenance funding to cover general fund expenditures. This school year, fencing was added to block access behind portable classrooms to ensure student safety. Plans are to add concrete to a front section of the school for ease at student dismissal. Plans are to move the bike rack area so additional parking can be added.



## Teacher Qualifications

This table shows information about teacher credentials and teacher qualifications. Teachers without a full credential include teachers with district and university internships, pre-internships, emergency or other permits, and waivers. For more information on teacher credentials, visit [www.ctc.ca.gov](http://www.ctc.ca.gov).

Teacher Credential Information		Three-Year Data		
	Tracy USD	Hirsch ES		
Teachers	18-19	16-17	17-18	18-19
With a full credential	655	27	24	24
Without a full credential	44	2	1	1
Teaching outside subject area of competence (with full credential)	8	0	0	0

## Teacher Misassignments and Vacant Teacher Positions

This table displays the number of teacher misassignments (positions filled by teachers who lack legal authorization to teach that grade level, subject area, student group, etc.) and the number of vacant teacher positions (not filled by a single designated teacher assigned to teach the entire course at the beginning of the school year or semester). Please note that total teacher misassignments includes the number of teacher misassignments of English learners.

Teacher Misassignments and Vacant Teacher Positions		Three-Year Data		
		Hirsch ES		
Teachers		16-17	17-18	18-19
Teacher misassignments of English learners		0	0	0
Total teacher misassignments		0	0	0
Vacant teacher positions		0	0	0

## Professional Development

Tracy Unified School District requires new teachers to participate in the Tracy Teacher Induction Program (TTIP). This involves six full days of pre-service and four days of follow-up during the year. At this time, teachers are introduced to the district and their site and receive training on classroom management, content organization and lesson design.

All activities are based on the California Standards for the Teaching Profession (CSTP). Throughout the year in TTIP, teachers are additionally supported in the classroom on a regular basis by a staff-development specialist. New teachers who qualify for the district's induction program to clear their preliminary credentials are assigned an Induction support provider and work through the modules of the Formative Assessment of California Teachers (FACT).

The district offers professional-development opportunities for all staff members throughout the school year. Two full days are provided before the school year starts. As Hirsch continues to implement the Common Core State Standards (CCSS), the staff receives training including Rigor and Relevance Framework, articles related to CCSS, updates on TUSD transition, authentic resources, and time for collaboration and reflection: lesson development focusing on project-based learning. Hirsch has four teachers writing English language arts units through Rigorous Curriculum Design (RCD), two teachers writing mathematics units through RCD, and two teachers going through extensive Next Generation Science Standards training.

Every Monday, students are released early from school at 1:30 p.m. to allow teachers to participate in professional-development opportunities. These sessions are divided throughout the year to allow teachers to participate in site staff development, district staff development and teacher collaboration time.

Professional Development Days		Three-Year Data		
		2016-17	2017-18	2018-19
Hirsch ES		5 days	5 days	5 days



## Academic Counselors and School Support Staff

This table displays information about academic counselors and support staff at the school and their full-time equivalent (FTE).

Academic Counselors and School Support Staff Data	
2017-18 School Year	
Academic Counselors	
FTE of academic counselors	0.0
Average number of students per academic counselor	✧
Support Staff	
	FTE
Social/behavioral counselor	0.1
Career development counselor	0.0
Library media teacher (librarian)	0.0
Library media services staff (paraprofessional)	0.5
Psychologist	1.0
Social worker	0.0
Nurse	0.0
Speech/language/hearing specialist	0.6
Resource specialist (nonteaching)	1.0
✧ Not applicable.	



## School Financial Data

The following table displays the school's average teacher salary and a breakdown of the school's expenditures per pupil from unrestricted and restricted sources.

School Financial Data	
2016-17 Fiscal Year	
<b>Total expenditures per pupil</b>	\$7,717
<b>Expenditures per pupil from restricted sources</b>	\$1,884
<b>Expenditures per pupil from unrestricted sources</b>	\$5,834
<b>Annual average teacher salary</b>	\$77,627



## Expenditures Per Pupil

Supplemental/restricted expenditures come from money whose use is controlled by law or by a donor. Money that is designated for specific purposes by the district or governing board is not considered restricted. Basic/unrestricted expenditures are from money whose use, except for general guidelines, is not controlled by law or by a donor.

## Financial Data

The financial data displayed in this SARC is from the 2016-17 fiscal year. The most current fiscal information available provided by the state is always two years behind the current school year and one year behind most other data included in this report. For detailed information on school expenditures for all districts in California, see the California Department of Education (CDE) Current Expense of Education & Per-pupil Spending web page at [www.cde.ca.gov/ds/fd/ec](http://www.cde.ca.gov/ds/fd/ec). For information on teacher salaries for all districts in California, see the CDE Certificated Salaries & Benefits web page at [www.cde.ca.gov/ds/fd/cs](http://www.cde.ca.gov/ds/fd/cs). To look up expenditures and salaries for a specific school district, see the Ed-Data website at [www.ed-data.org](http://www.ed-data.org).

## District Financial Data

This table displays district teacher and administrative salary information and compares the figures to the state averages for districts of the same type and size based on the salary schedule. Note: The district salary data does not include benefits.

Salary Data		2016-17 Fiscal Year
	Tracy USD	Similar Sized District
<b>Beginning teacher salary</b>	\$48,137	\$49,512
<b>Midrange teacher salary</b>	\$70,952	\$77,880
<b>Highest teacher salary</b>	\$93,286	\$96,387
<b>Average elementary school principal salary</b>	\$126,958	\$123,139
<b>Average middle school principal salary</b>	\$133,564	\$129,919
<b>Average high school principal salary</b>	\$136,424	\$140,111
<b>Superintendent salary</b>	\$221,734	\$238,324
<b>Teacher salaries: percentage of budget</b>	39%	36%
<b>Administrative salaries: percentage of budget</b>	6%	5%

## Financial Data Comparison

This table displays the school's per-pupil expenditures from unrestricted sources and the school's average teacher salary and compares it to the district and state data.

Financial Data Comparison		2016-17 Fiscal Year
	Expenditures Per Pupil From Unrestricted Sources	Annual Average Teacher Salary
<b>Hirsch ES</b>	\$5,834	\$77,627
<b>Tracy USD</b>	\$6,110	\$74,520
<b>California</b>	\$7,125	\$79,665
<b>School and district: percentage difference</b>	-4.5%	+4.2%
<b>School and California: percentage difference</b>	-18.1%	-2.6%

Data for this year's SARC was provided by the California Department of Education and school and district offices. For additional information on California schools and districts and comparisons of the school to the district, the county and the state, please visit DataQuest at <http://dq.cde.ca.gov/dataquest>. DataQuest is an online resource that provides reports for accountability, test data, enrollment, graduates, dropouts, course enrollments, staffing and data regarding English learners. Per Education Code Section 35256, each school district shall make hard copies of its annually updated report card available, upon request, on or before February 1.

All data accurate as of December 2018.

## School Accountability Report Card

PUBLISHED BY:

**SIA** School  
Innovations  
& Achievement  
[www.sia-us.com](http://www.sia-us.com) | 800.487.9234