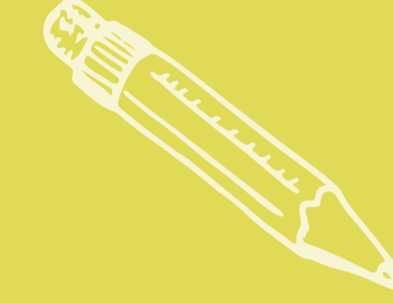


# COMPLETION COACHES



## WHAT WE DO:



### ASSESS

the needs or struggles that students face throughout their college careers.



### ENGAGE

with internal college resources and external community organizations.



### NAVIGATE

students through planning and preparation for graduation or transfers.



## OUR PARTNERS:

- ★ FINANCIAL AID
- ★ MULTICULTURAL SERVICES
- ★ INSTITUTIONAL RESEARCH
- ★ COMMUNITY-BASED ORGANIZATIONS
- ★ ADVISING
- ★ TRIO
- ★ FACULTY



## HOW WE HELP:

- ★ **FINANCIAL:** Identify funding resources. Assist with private, state and federal aid navigation (FAFSA/WASFA).
- ★ **ACADEMIC:** Assist with graduation planning, including post-graduation transfer or employment. Provide referrals for tutoring, study skills and disability services.
- ★ **PERSONAL:** Address issues related to balancing life, school, and work. Connect to food and housing resources, counseling, child and healthcare services.
- ★ **INSTITUTIONAL:** Assist with transfer credits, course substitutions and exceptions to policy. Provide class selection and registration assistance. Facilitate issues of pertaining to cultural climate.



**pcccn**  
Puget Sound College and Career Network