

2012-13

ANNUAL REPORT



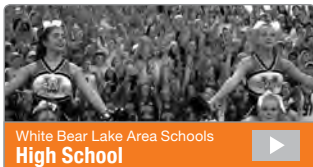
White Bear Lake Area Schools



Leading minds to learning,
hearts to compassion,
and lives to community service.

CONTENTS

- 4 STUDENT ACHIEVEMENT
- 13 SCHOOL CLIMATE
- 14 STUDENT AWARDS
- 16 INNOVATION
- 18 FINANCE
- 20 DISTRICT PROFILE
- 20 SCHOOL BOARD
- 22 PARTNERSHIPS



Visit www.isd624.org/news/District-Videos.asp to view videos of feature stories.



FROM THE SUPERINTENDENT

As you read this annual report, consider the stories of the individual students and staff members whose accomplishments are described and whose photos you see.

Consider learning more by viewing videos and reading additional information on our website.

Then consider visiting our schools, attending concerts, athletic events, and programs, and find out how you can be more involved in our stories of success!

Dr. Michael Lovett, Superintendent of Schools



STUDENT GROWTH

Measures of Academic Progress (MAP)

The district measures the academic growth of each student in grades 1-10 with the Measures of Academic Progress (MAP) test, a nationally-normed assessment based on national and state standards. Compared to the national average for one year of growth, our student gains in 2012-13 were highly competitive.

- Average reading gains in grades 1-10 were one year, four months.
- Average math gains in grades 1-10 were one year, five months.



150%
(1 yr 6 mos)

125%
(1 yr 3 mos)

100%
(1 year)
National Mean

75%

50%

25%

0%

Average
**READING
GROWTH**

1 year
4 months

GRADES 1-10

Average
**MATH
GROWTH**

1 year
5 months

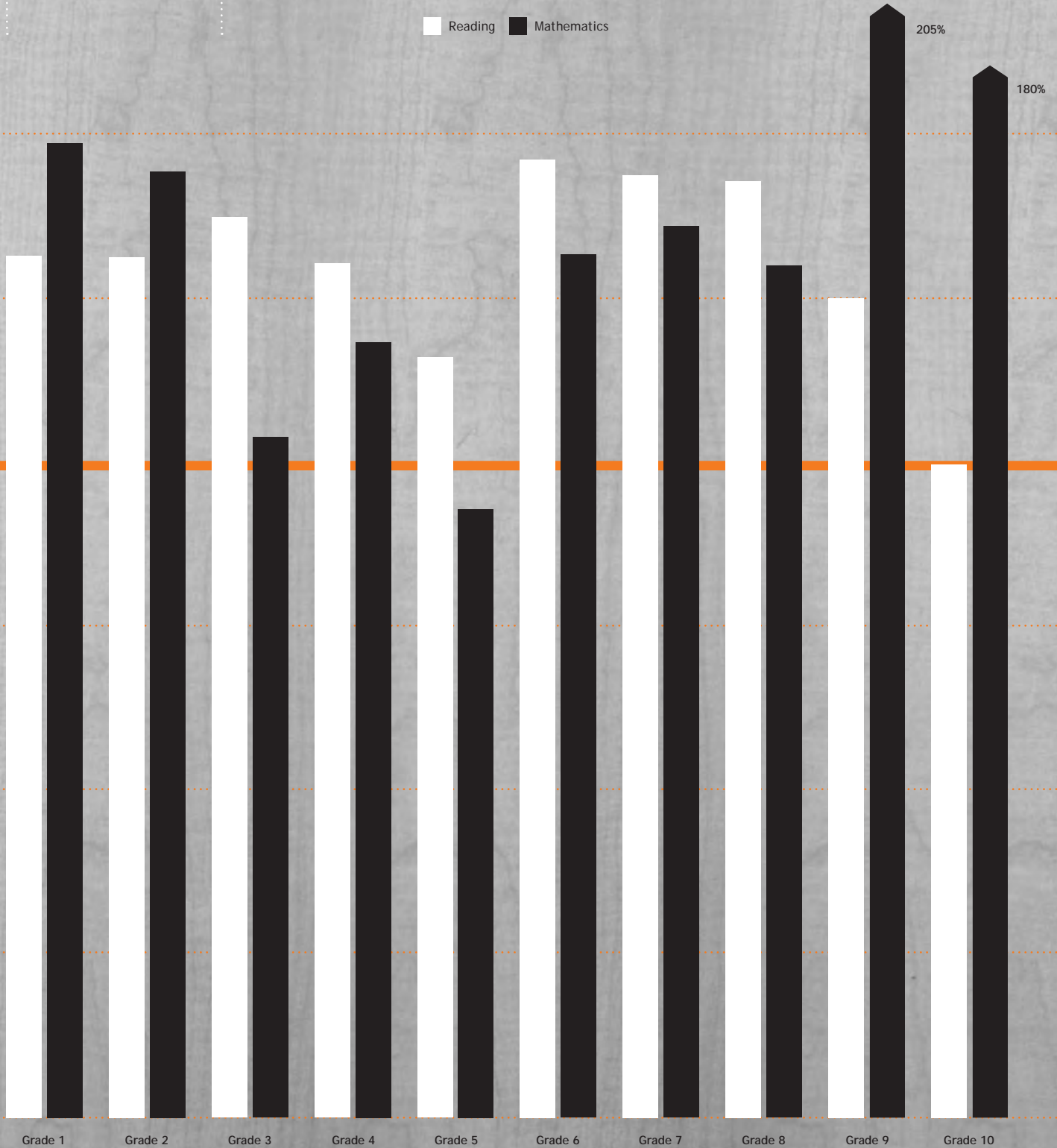
GRADES 1-10

Growth note:

- » *Grades 1-3 shows fall 2012 to spring 2013 growth*
- » *Grades 4-5 shows spring 2012 to spring 2013 growth*
- » *Grades 6-10 shows fall 2012 to spring 2013 growth*

Measure of Academic Progress (MAP)
2012-13 School Year
White Bear Lake Area Schools
Student Academic Growth

Reading Mathematics



Percent of Expected Growth
National Average Growth Equals 100% (One year)

STUDENT PROFICIENCY

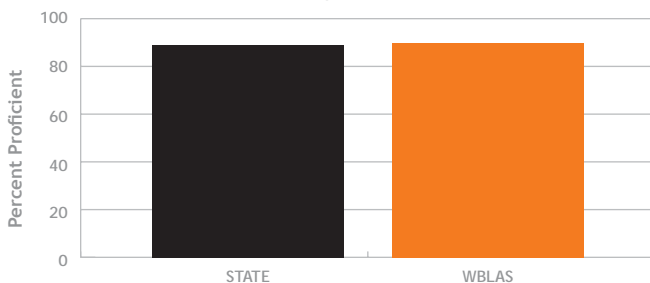
Minnesota Comprehensive Assessments (MCA)
 Student proficiency is measured by the Minnesota Comprehensive Assessment (MCA) tests, Minnesota's state requirement for testing under the Federal No Child Left Behind (NCLB) Act.

WBLAS MCA COMPARISON TO STATE AVERAGES			
	State	WBLAS	WBLAS % above state
Writing	88%	88%	0
Reading	57%	64%	+7
Mathematics	60%	67%	+7
Science	52%	62%	+10



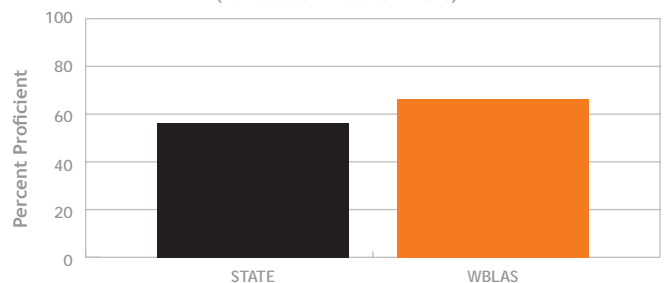
WRITING PROFICIENCY

WBLAS - North Campus 9th Grade MCA Grad Written Composition Test 2012



READING PROFICIENCY

MCA Reading (New test administered in 2013)



WBLAS makes AYP for 4th year in a row.

*One of only two districts
in the East Metro area to do so.*

Adequate Yearly Progress (AYP):

- Met the Federal Adequate Yearly Progress (AYP) threshold in 2013 for the fourth year in a row. White Bear was one of only two school districts in the East Metro area to do so for all four years.
- Made state targets for reading and math with all groups of students for the fourth year in a row.



MATH scores rise

*District math scores
rose nearly 5 percentage
points from 2011 to 2013.*

READING margin above state increases

*On the new, more rigorous
reading test given in 2013,
district scores rose
from 4 points above the
state average in 2012 to
7 points above the state
average in 2013.*

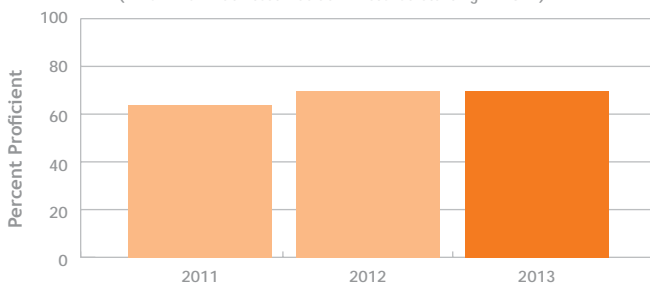
SCIENCE scores rise

*District science scores
have risen
14 percentage points
over the past 5 years.*

All district sites scored in the 99th percentile for proficiency in the State of Minnesota's new Multiple Measurement Rating (MMR). Of special note, **White Bear Lake Area High School - South Campus was rated in the top 1% of the Minnesota's 413 high schools.**

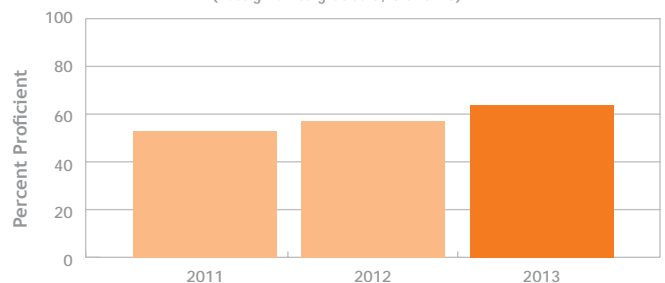
MATH PROFICIENCY

WBLAS MCA Math Results - 3 year trend
(A new MCA Math test was administered starting in 2011)



SCIENCE PROFICIENCY

WBLAS MCA Science Results - 3 year trend
(Test given to grades 5, 8 and 10)



HIGH EXPECTATIONS & ENRICHMENT

Number two in state

White Bear Lake Area Schools ranked number two in the state for number of students participating in College in the Schools (CIS) courses through the University of Minnesota for 2012-13. Students had the option to take 10 CIS courses.

\$1.6 million

The total value of credits earned by WBLAHS students in CIS and AP courses during 2012-13 was \$1.6 million at University of Minnesota tuition rates.



Rising to the challenge

5 out of 10 middle school students

took advanced or enriched courses.

6 out of 10 seniors

took college courses.

Special Services

White Bear Lake Area Schools have high expectations for all students and offer a continuum of specialized instruction for students with special needs. Our programs are individualized and comprehensive.

Early Childhood

Class options at Tamarack Nature Center, Normandy Park and Hugo Elementary expanded after a program review was completed in 2010-11. A family literacy class was first initiated in November of 2011 and filled to capacity for the 2012-13 academic year.

Elementary

- A review of the Gifted and Talented program was completed in 2012-13. In the fall of 2013, innovative new programs were implemented to challenge all students.
- Beginning in 2012-13, all elementary schools offered a world language, with Spanish at Birch Lake, Hugo, Lakeaires, Matoska, Oneka, Otter Lake, and Willow Lane. Chinese is offered at Lincoln and Vadnais Heights. For 2012-13, the language was offered in grades 4 and 5, with the full K-5 implementation beginning in the fall of 2013.

STEM initiatives

The middle schools and high school campuses offered courses through Project Lead the Way, a rigorous, innovative program focused on science, technology, engineering and mathematics.

International Baccalaureate

- Central and Sunrise Park Middle Schools were accepted as International Baccalaureate Candidate Schools for the Middle Years Program (MYP) in June 2012.
- Matoska International IB World School, an elementary option for all families, has been an authorized IB site since December of 2010.

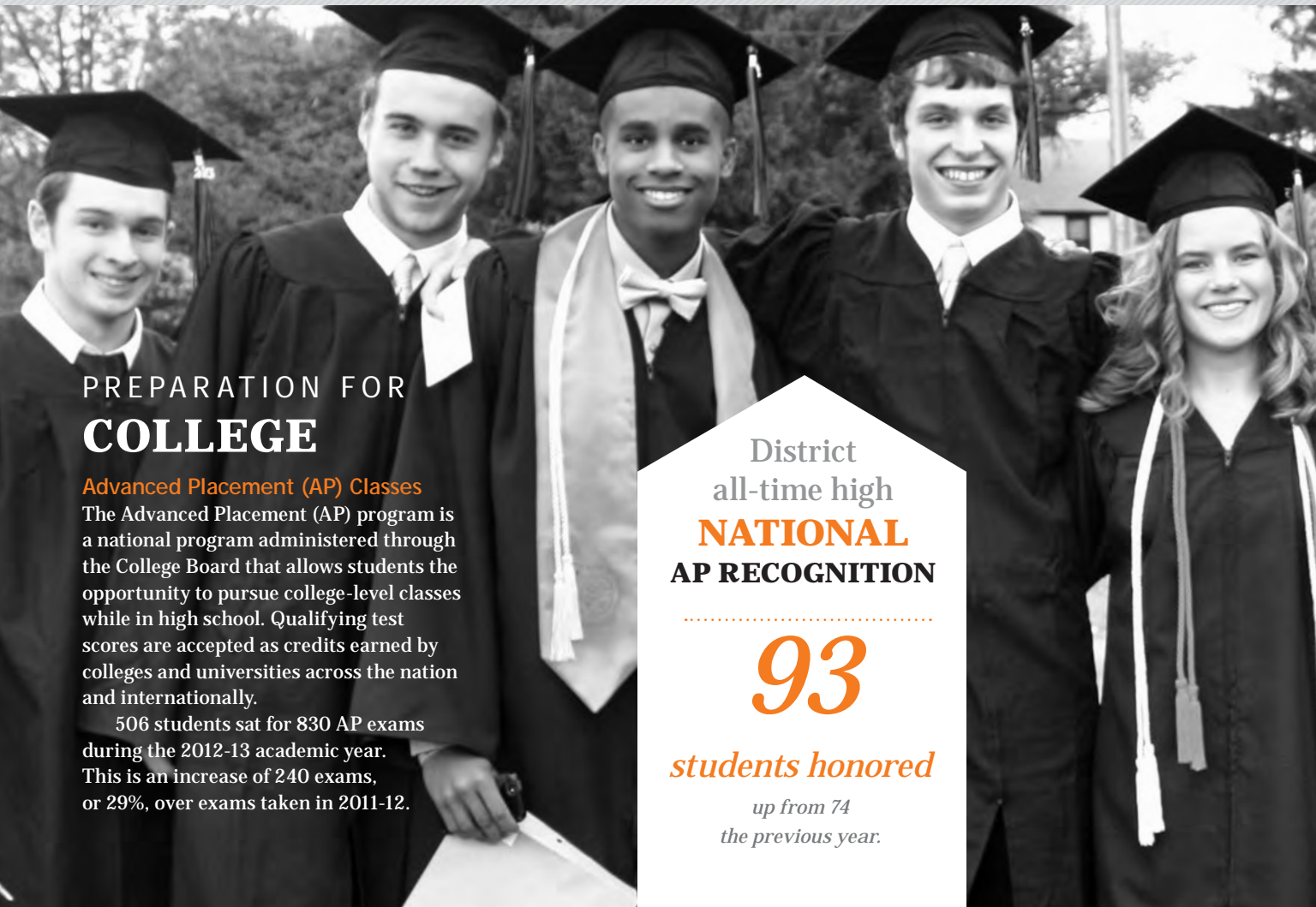


Middle School

- Students had the opportunity to take Chinese, French, German or Spanish during each of their middle school years.
- For 2012-13, 49% of middle school students at Sunrise and Central took at least one advanced or enriched class in math, science, social studies, or language arts. This is an increase of six percentage points over the previous year.
- In June 2012, White Bear Lake Area School District middle schools were accepted as IB Candidate Schools.
- In December of 2013, the School Board approved adding Project Lead the Way coursework at grade 6, giving students the opportunity to take these STEM (design and modeling, robotics) classes in grades 6, 7 and 8.

High School

- **College-level classes** - White Bear Lake Area High School offered a total of 30 college-level courses to students in 2012-13. This is the highest number of college course offerings in our area. The number of students enrolling in these classes is increasing.
- **Increased rigor** - The percentage of high school seniors taking college level courses was 60% in 2012-13. The number of AP Scholars in 2013 rose to 93, up from 74 the previous year.



PREPARATION FOR COLLEGE

Advanced Placement (AP) Classes

The Advanced Placement (AP) program is a national program administered through the College Board that allows students the opportunity to pursue college-level classes while in high school. Qualifying test scores are accepted as credits earned by colleges and universities across the nation and internationally.

506 students sat for 830 AP exams during the 2012-13 academic year. This is an increase of 240 exams, or 29%, over exams taken in 2011-12.

District
all-time high
NATIONAL
AP RECOGNITION

93

students honored

up from 74
the previous year.

15

Advanced Placement (AP) Classes

- » Art History
- » Biology
- » Calculus A-B
- » Calculus B-C
- » Chemistry
- » English Language & Composition
- » English Literature & Composition
- » European History
- » Macroeconomics
- » Microeconomics
- » Music Theory
- » Physics
- » Statistics A-B
- » Studio Art
- » U.S. Government & Politics

The district added AP American History, AP Human Geography and AP World History and dropped AP Government and Politics for the 2013-14 academic year.

10

College in the Schools (CIS) Classes

- » CIS Intro Literature
- » eCIS Writers Studio
- » CIS American History to 1865
- » CIS US History Since 1865
- » CIS French 1003
- » CIS French 1003/1004
- » CIS German 1003/1004
- » CIS Spanish 1003

2013 ADVANCED PLACEMENT SCHOLARS

43 AP Scholars

Kaylee Anderson
Lydia Andresen
Alexa Anfang
Brian Boerner
Benjamin Burke
Ryan Burke
Samuel Denker
Peter Diede
Samantha Gibson

Chase Gorman
John Hagen
Allison Hansen
Cory Huff
Andrea Jorissen
Kidus Ketema
Benjamin Nguyen
Emily Purdham
Jordan Schultze

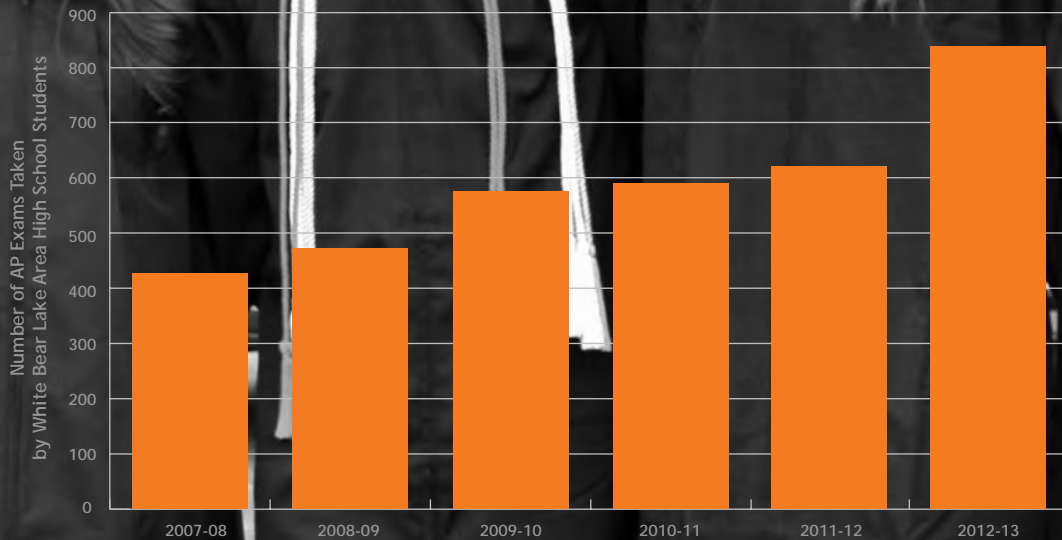
Andrew Smith
Jacob Wilcox
Arianna Adams
Ryan Allen
Chase Ator
Lukas Carlson
Benjamin Dullum
Christopher Dye
Melissa Hiniker

Collette Johnson
Kiersten Johnson
Marissa Knutson
Lauren Mason
Megan Matthews
Brittany Patricelli
Kathryn Ross
Margaret Rupprecht
Connor Ryan

Tiffany Schack
Abby Simms
Patrick Sogard
Jane Storey
Macy Tran
Grant Walby
Alina Yasis



ADVANCED PLACEMENT (AP) PROGRAM 2007-13



5

Project Lead the Way (PLTW) Classes

- » CIS Spanish 1003/1004
- » eCIS Mathematical Modeling and Predictions

College in the Schools classes are introductory-level college courses offered by the University of Minnesota. A total of 340 White Bear Lake Area High School students enrolled in CIS courses during the 2012-13 academic year.

In 2014-15, the district will add CIS Modern Chinese and CIS German 1004.

- » Introduction to Engineering Design
- » Principles of Engineering
- » Digital Electronics
- » Biotechnical Engineering
- » Civil Engineering and Architecture (began in 2012-13)

Project Lead the Way STEM classes are nationally-certified courses that allow students the opportunity to earn university credits.

21 AP Scholars with Honor

Tina Li	Mitchell Brunkow
Jenna Baker	Madisen Crow
Karl Breustedt	Tanner Eischen
James Farrell	Scott Eischens
Daniel Hawley	Ryan Geary
James Hazzard	Kristin Karels
Taylor Okonek	Ella Rausch
Laura Sevcik	Danielle Renner
Olivia Shepler	Sydney Simmons
Rachel Altier	Beau Smit
Alexander Berlin	

27 AP Scholars with Distinction

Calvin Brinkworth	Benjamin Ehrlich	Jake Marzitelli
Lindsay Buhl	Sarah Falk	Caitlin Mccoy
Taylor Krivanek	Sarah Garrison	Caitlin Nelson
Brigid Niccum	Taylor Grasdalen	Madeline Phelps
Nicholas Binger	Nicole Hinze	Frances Rossini
Jenna Binsfeld	Seaver Holter	Benjamin Siers
Justin Brill	Brandon Johnson	Karl Solberg
Jordan Buie	Sean Kasprisin	Mackenzie Troske
Carly Edson	Anthony Larson	Joseph Viavattine

2 National AP Scholars

Nicholas Binger
Joseph Viavattine

Advancement via Individual Determination (AVID)

White Bear Lake Area High School began implementation of the Advancement via Individual Determination (AVID) program in the fall of 2010. The program offers rigorous instruction to students in the academic middle who have the individual determination to prepare for a four-year college. In AVID classes, students collaborate, engage in inquiry, and learn college-level reading, writing, and study strategies.

White Bear Lake Area Schools AVID 9th graders surpassed the 2012-2013 state average of 87.8, with 96% passing the GRAD writing exam. Tenth grade AVID students also showed positive growth on their MCA reading test, scoring 9 percentage points higher than the state average.

Enrollment in AVID continues to increase, with 110 students in grades 8-11 enrolled in the program for 2012-13 and 117 students enrolled in the 8-12th grade program for the 2013-14 school year.

Post-Secondary Enrollment Option (PSEO)

Juniors and seniors at White Bear Lake Area High School have the opportunity to attend Minnesota post-secondary institutions as high school students. Thirty-three members of the Class of 2012 were PSEO students.

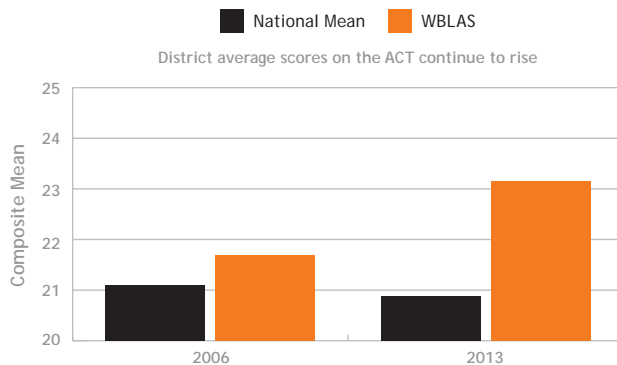
ACT

The ACT is the most commonly taken college entrance exam in Minnesota, required by most Minnesota colleges. The White Bear Lake Area School District encourages all students to take the ACT test. There is a strong relationship between taking challenging courses, such as honors, AP and CIS classes, and increased scores on college entrance exams.

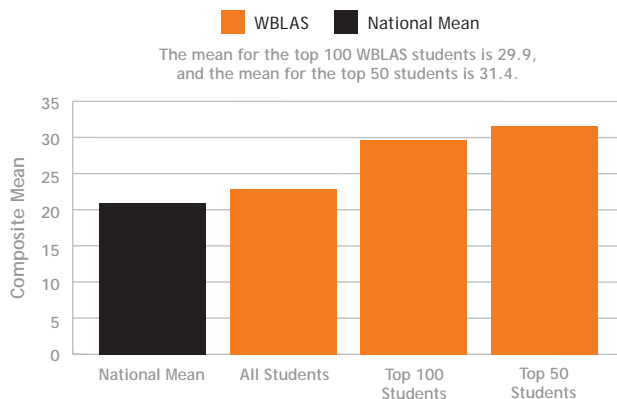
SAT

The SAT college entrance exam is not generally required of colleges or universities in the Upper Midwest and is taken by fewer students in the district than the ACT.

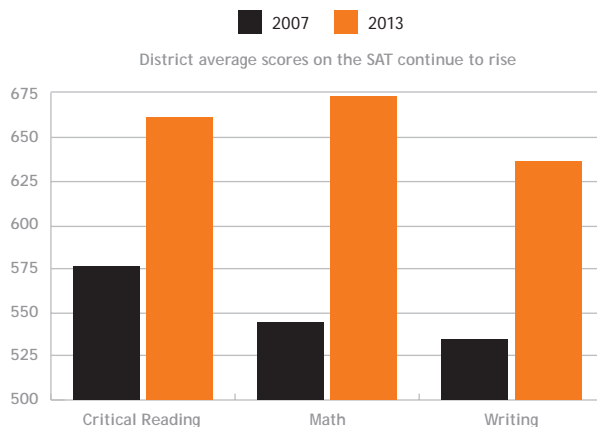
ACT - WBLAS EIGHT YEAR TREND



2013 ACT COMPOSITE



SAT - WBLAS SEVEN YEAR TREND



Students had the opportunity to earn college credit in 30 courses at the high school.

For 2013-14, the number of college courses rises to 32, the highest number of college course offerings in the our area.

RIGOROUS CURRICULUM

• Science

White Bear Lake Area Schools are clearly making significant progress in science as a result of science notebooks, Engineering is Elementary, Foss Science Curriculum and staff professional development. District science scores rose another 5 percentage points for 2013, with an overall improvement of 14 percentage points over 5 years. These results represent the greatest one-year gain of 16 East Metro School Districts.

• Reading

Factors contributing to a positive seven percentage point spread between the state average reading score and White Bear Lake Area Schools average reading scores include continued literacy training for teachers and implementation of new literacy curriculum aligned to state standards. We continue to successfully implement a highly structured intervention program designed to meet the individual needs of all students.

• Math

The 2013 11th grade math results showed an improvement of 20 percentage points over 5 years. This improvement is indicative of the benefits students are seeing from opportunities they now have to accelerate into more rigorous math curriculum at an earlier age.

• Curriculum Advisory

The Community Curriculum Advisory Committee (CCAC) includes parents, students, teachers, administrators and community members. They serve as a sounding board for the community, gain knowledge about the district's curriculum and its development, and positively influence changes within each curriculum area.

RESPONSE TO INTERVENTION (RtI)

This framework is a system of high-quality instruction and tiers of intervention matched to student need. In 2012-13, RtI expanded to eighth grade and was implemented in all elementary schools.

COMMUNITY SUPPORT

- Community volunteers provide important mentoring, math and reading help and classroom support. Families actively support students through parent-teacher organizations.
- In November of 2011, the White Bear Lake Area community supported the district's local operating levy renewal with a 73% to 27% margin.
- In November of 2013, the White Bear Lake Area community supported the district's Capital Projects Levy.



EXCELLENT TEACHING AND SUPPORT

White Bear Lake Area Schools Otter Lake Elementary teacher Luanne Oklobzija was named 2012 Teacher of the Year and represented the district in the state Teacher of the Year program.

Staff Professional Development

While individual teachers personally invest in ongoing training through advanced coursework, the school district focused on several areas key to strengthening student achievement during the 2012-13 academic year, including advanced literacy training and a professional development focus on elementary science and the implementation of the IB Middle Years Program at Central and Sunrise. The continuation of a program entitled "Authentic Intellectual Work" (AIW) also helps teachers develop the understanding and skills to raise the level of student engagement.

2012-13 NATIONAL MERIT SCHOLARS

- *National Merit Commended*
 - » *Madisen Crow*
 - » *Sarah Falk*
 - » *Brandon Johnson*
 - » *Madeline Phelps*
 - » *Frances Rossini*
- *National Achievement Scholarship*
 - » *Jordan Buie*



STATE & NATIONAL STUDENT AWARDS

› **Girls' Cross Country participants**

Two WBLAHS Girls' Cross Country athletes competed in the cross country state meet.

› **Boys' Cross Country Team**

The WBLAHS Boys' Cross Country Team competed in the cross country state meet.

› **Girls' Cheerleading**

The Cheerleading Team placed first for the third consecutive year at the MCCA State Cheer-Off competition.

› **Girls' Soccer**

The WBLAHS Girls' Soccer Team competed in state championship game at the Metrodome.

› **WBLAHS Bowling Team members**

Five WBLAHS Bowling Team members participated in the state championship.

› **WBLAHS Mountain Bike Team member**

WBLAHS Mountain Bike Team member Kaleb DeKeyrel placed 7th in the state competition.

› **AP Scholarship program**

Ninety-three students were honored in the AP Scholar program in the categories of AP Scholars, AP Scholars with Honors, AP Scholars with Distinction, and National AP Scholars.

› **National Merit Scholars**

Five WBLAHS alumni were commended as National Merit Scholars. Additionally, Jordan Buie was recognized as an "outstanding participant" in the National Achievement Scholarship Program.

› **All-State Band**

Two WBLAHS students represented the district in the All-State Band.

› **All-State Choir**

Luke Gion represented the district in the All-State Choir.

› **Honors Choir**

Five WBLAHS students represented the district in the Honors Choir.

› **Hennepin Theatre Trust's SpotLight Musical Theatre Program**

The cast and crew of WBLAHS' Fall Musical "Anything Goes" received accolades from the Hennepin Theatre Trust's SpotLight Musical Theatre Program. In addition to individual cast awards, "Anything Goes" won Outstanding Overall Production and Outstanding Overall Performance.

› **Wrestling**

The White Bear Lake Wrestling Team sent six athletes to participate in the Individual State 4AAA Tournament.

› **Alpine Ski**

Two skiers from the WBLAHS Alpine Ski Team competed at the state competition.

› **Boys Diving**

WBLAHS Diving Team member Harry Baden competed at the state meet.

› **Cheer Nationals**

The WBLAHS cheerleaders were among 20 teams participating in the 2013 National Cheerleaders Association in Louisville, Ky. They took the overall high score for their "time out" cheer and became the national champions for the second consecutive year.

› **Nordic Ski**

The Nordic Ski Team participated in the Suburban East Conference, one of the most competitive conferences in the state for skiing; all team members were awarded All-Conference Honors.

› **Scholastic Art Award Recipients**

Six district students received Minnesota Scholastic Art Awards, three of which were Gold Key Awards; the awards are an affiliate of the National Scholastic Art Awards program that recognizes many of Minnesota's most creative teenagers in grades 7-12.

› **History Day Award Recipients**

Sixty students participated in the National History Day's state competition. Sunrise students Jennie Hebaus, Anna Wieland and Emily Zoborowski and WBLAHS student Sarah Westad traveled to Washington, D.C. to compete in the national competition.

› **Bus Safety Poster Contest**

Seven district students placed first in their school and competed at the state level Bus Safety Poster Contest. Three of the students received first place in the state for their grade levels.

› **WBLAHS Archery Team**

The WBLAHS Archery Team participated at the national tournament, placing in the top 20% of qualifying teams and going on to compete in the MASP World Championship.

› **National Geography Challenge**

More than 200 students from Central Middle School participated in the National Geography Challenge. The top ten scores, averaged together, placed Central Middle School first in the state and third nationally.

› **Girls' Track and Field**

The WBLAHS Girls' Track and Field Team placed second at the Section 4AA Finals. Four team members went on to participate in the state meet.

› **Boys' Track and Field**

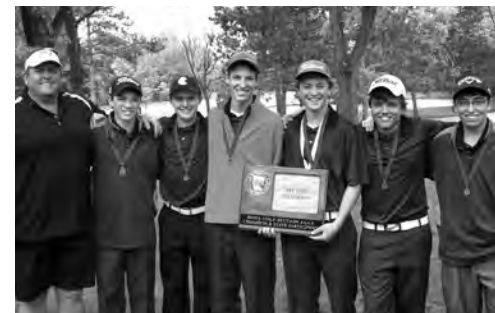
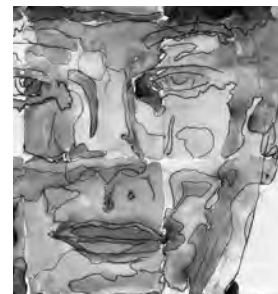
The WBLAHS Boys' Track and Field Team placed second at the Section 4AA Finals. Seven team members went on to participate in the state meet.

› **WBLAHS Student Council**

The WBLAHS - South Campus Student Council was recognized as the Outstanding Student Council of the Year at the Minnesota Association of Student Councils State Convention.

› **Boys' Golf Team**

The WBLAHS Boys' Golf Team was named the Section 4AAA champions and advanced to the state meet for the first time since 2008.





INNOVATION

Innovative Technology

WBLAS is committed to integrating technology in every classroom in order to engage students, accelerate student learning, and ensure that students gain the 21st century skills they need to succeed. These goals are reflected in current practices as well as new initiatives for 2012-13.

Technology Integration

- Technology integration is expanding across our schools. New tools allow for more collaboration, more personalized communication and instruction, more authentic ways for students to demonstrate learning and more ways for parents to stay connected to their child's learning.
- Instructional technology coaches at each building support teachers and help them make best-practice use of these resources. This model ensures that we are maximizing resources in White Bear while sharing our best ideas across grade levels, departments and buildings. We are expanding our innovative use of technology at all levels including more hybrid courses at secondary level and more access to technology and expanded learning opportunities at all grades.

Infrastructure

- WBLAS continues to strengthen and expand our technology infrastructure. We continued to expand the wireless network to guarantee we are meeting the growing needs of our learners. With nearly 4,000 computers in the district, we maintain a student to computer ratio of less than 3:1.
- Our retooled technology department with a new Director of Technology and Database Manager are better positioned to provide accurate and timely, quality service and help the entire district innovate.

iPads and ChromeBooks

- We employ more than 400 iPads to ensure technology is easy to use, equitable, authentic and innovative. Unique usage of iPads included work in K-1 classrooms, teacher evaluations, special education, middle school math, and the buildings and grounds department.
- Always seeking to provide the best technology for each situation, we deployed nearly 500 *ChromeBooks* across the district in 2012-13. These devices offer instant access to the collaborative features of *Google Apps*, *Schoology* and countless other online resources. They also helped our students develop stronger 21st century skills and helped staff members increase the digital impact of their curriculum.

White Bear Apps and Schoology

- *Google Apps* and integration expanded dramatically in 2012-13. WBLAS staff and students incorporated these tools into our daily practice, using them to communicate more efficiently, collaborate more easily, provide more equitable access, offer more timely feedback and expand learning beyond the traditional school day.
- *Google Apps* accounts are connected to *Schoology* to make logins more efficient. *Schoology* improves communication, provides a central place for classroom resources and serves as a digital extension of the physical classroom, a place where students and staff are continuing discussions, sharing ideas and building understanding. All teachers were using this system by the start of the 2013-14 school year.



Communication Innovation

White Bear Lake Area Schools embraces innovative new communications tools to connect with families and community members.

- **Parent Alert System** - The district began using the School Messenger parent alert system in 2012. The system allows for voicemail and email alerts to be sent out instantaneously.
- **Community e-Newsletter** - The Community e-Newsletter, sent out twice a month to families and community members, covers School Board proceedings, student and staff achievements as well as school and Community Education offerings.
- **Stay Social** - The White Bear Lake Area Schools joined new social media circles in 2012. Currently, almost 3,000 people follow the district on Facebook, Twitter or YouTube. Find links to the district's social media accounts at www.isd624.org.
- **www.isd624.org** - New websites, launched by the district and schools in the summer of 2012, are designed to be easy-to-use and informational.
- **Videos** - White Bear Lake Area Schools began to “tell its story” through video. Starting in the fall of 2013, the district began sending a Community e-Newsletter Video Edition publication to families and community members twice a month. Professional videos and student videos have both debuted through this communication venue.



Innovation in the News

Many of the district's students, staff members and programs were highlighted in the news as examples of innovation and excellence.



Find links to media stories at www.isd624.org/news/WBLAS-in-the-News.asp



General fund revenue

*79% invested directly
into the classroom*

Ranks the district among the highest in the Metro

Financial Management

To help the district meet its educational goals, White Bear Lake Area Schools remain committed to fiscal responsibility and a balanced budget to ensure that maximum resources reach our classrooms.

White Bear Lake Area Schools invested 79% of general fund revenue directly into the classroom, which ranks the district first compared to neighboring districts. Over the past three years, we have put a greater percentage of general fund revenue into classrooms than any neighboring districts.

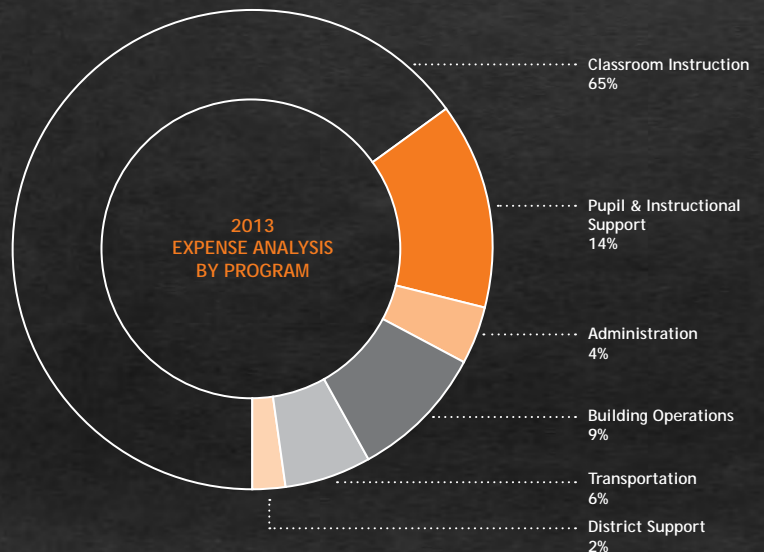
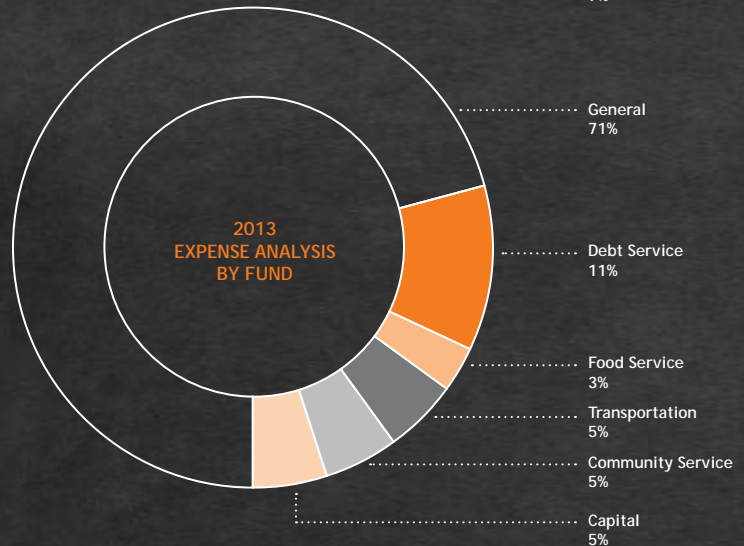
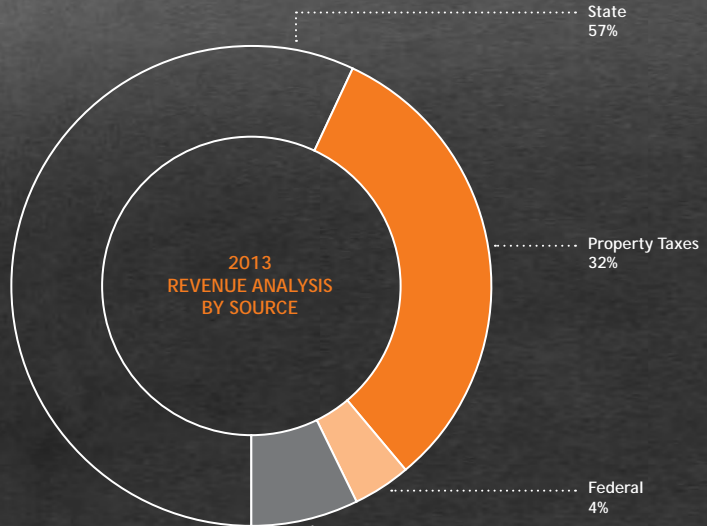
District Efficiencies:

- Second-most efficient in transportation cost per student among area districts.
- Among the most efficient districts with some of the lowest administrative costs per student.

Stewardship:

For 2012-13, White Bear Lake Area Schools continued to demonstrate strong stewardship to our communities.

- We are the only Minnesota district to be recognized for excellence in financial reporting by the Association of School Business Officials and Government Finance Officers Association for 13 consecutive years.
- The district was awarded a AA bond rating from Standard and Poor's in 2008, 2011 and again 2012.
- We partnered with Hallberg Engineering to reduce our energy use during our third year in the Schools for Energy Efficiency (SEE) program, avoiding \$117,000 in energy costs from October 1, 2012 to September 30, 2013.
- Our supportive community passed a capital projects levy with a 61% to 39% margin in November of 2013.



Source: Comprehensive Annual Financial Report

DISTRICT PROFILE

The White Bear Lake Area School District serves all or parts of Birchwood, Gem Lake, Hugo, Lino Lakes, Little Canada, Maplewood, North Oaks, Vadnais Heights, White Bear Lake and White Bear Township.

STUDENT DEMOGRAPHICS 2012-13	
Free/Reduced Lunch	29.9%
English Language Learner	4.6%
Special Education	12.3%
American Indian/Alaskan Native	0.8%
Asian/Pacific Islander	7.3%
Hispanic	4.6%
Black (non-Hispanic)	6.0%
White (non-Hispanic)	81.3%

Source: Minnesota Department of Education

STUDENT ENROLLMENT 2012-13	
Pre-K	714
Elementary (Grades K-5)	3,680
Middle School (Grades 6-8)	1,759
High School (Grades 9-12)	2,508
Transition Plus (Special Ed - ages 18-21)	25
DISTRICT TOTAL K-T+	7,972
DISTRICT TOTAL BIRTH-T+	8,686

Source: Minnesota Department of Education and District data

DISTRICT 624 STAFF PROFILE 2012-13	
Teachers with fewer than 3 years experience	8%
Teachers with more than 10 years experience	64%
Teachers meeting federal "Highly Qualified" requirements	100%



2012-13 School Board Members
 Superintendent Lovett, Clerk Cathy Storey, Vice Chair Chris Hiniker, Chair Janet Newberg (chair Jan. 2013-present), Treasurer George Kimball, Lori Swanson (chair through Dec. 2012), Bob Schevik, Kim Chapman.



www.isd624.org/about/Strategic-Planning.asp

Strategic Planning

During the 2012-13 academic year, the district continued work on goals identified during the 2010-11 community-driven Strategic Planning process.

Resulting changes being implemented during the 2012-13 academic year include: the addition of elementary world language and a middle school International Baccalaureate program, guidance counselor additions, college preparation improvements, and many more.

Core Values

The White Bear Lake Area School District builds quality lives and strong communities through compassion, integrity, respect, responsibility and service.

Mission

The mission of the White Bear Lake Area School District, a leader in innovative education and community partnerships, is to ensure our students:

- develop a love for learning,
- excel academically,
- are inspired to realize their dreams, and
- become engaged citizens with a global understanding by challenging each student within a dynamic, respectful and inclusive environment that nurtures the unique talents and abilities of every student.



In addition to English,
students in our district

speak
54

home languages

- AfannOromoOromi
- Afrikaans
- Amharic
- Arabic
- Balinesa
- Bantu
- Bengali
- Bosnian
- Cambodian
- Cebuano
- Chinese Mandarin
- Estonian
- French
- Fulah
- German
- Greek
- Gujarati
- Hawaiian
- Hindi
- Hmong
- Icelandic
- Igbo
- Indonesian, Bahasa
- Italian
- Japanese
- Kannada
- Kikuyu
- Kiswahili Swahili
- Korean
- Lao, Laotian
- Latvian
- Lithuanian
- Luganda Ganda
- Mandar
- Marathi
- Minangkabau
- Nepali
- Norwegian
- Phillipina, Tagalog
- Polish
- Portuguese
- Punjabi
- Russian
- Samoan
- Slovak
- Somali
- Spanish
- Tamil
- Telugu
- Thai
- Turkish
- Ukrainian
- Vietnamese
- Yoruba

Strategies

More than 100 action team members came together to plan action steps related to the six specific results below.

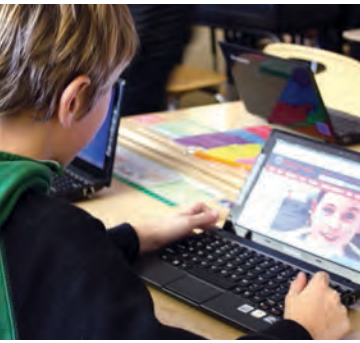
- We will develop a comprehensive understanding of our students' needs and interests to ensure students are challenged and excelling academically.
- We will create and implement a plan for global experiences and relationships to further understand world connections.
- We will ensure our facilities support our district's mission and objectives.
- We will create a district-wide culture that inspires innovation, a passion for learning, and confidence to pursue dreams.
- We will build a network of partnerships to provide personal and educational growth and service opportunities for students.
- We will foster connections with and among students and staff members to ensure all feel valued, supported and understood; and we will establish an environment that cultivates understanding and respect for differences among people.

Full details of the Strategic Planning process can be found at
www.isd624.org/about/Strategic-Planning.asp.

DISTRICT

PARTNERSHIPS

- **Hangzhou Foreign Languages School**
White Bear Lake Area Schools partners with Hangzhou Foreign Languages School, located in Hangzhou, China, for teacher and cultural exchanges. Teachers serve residencies in each school. Expanded opportunities for students began in 2012-13.
- **International Exchange Partnerships**
WBLAHS partners with schools in Meaux, France and Leipzig, Germany to provide international exchange experiences for students in German and French world language programs.
- **Lakeshore Players**
The district works with Lakeshore Players, a highly-regarded community theater based in White Bear Lake, to provide after-school classes and workshops for students.
- **MacPhail Center for Music**
Birch Lake Elementary partners with MacPhail Center for Music to offer an enhanced music program including piano and violin. For 2012-13, MacPhail provided free clinics for secondary band and choir students. Additional after-school and weekend music lesson opportunities are offered to the whole community.
- **Tamarack Nature Center**
Otter Lake and Vadnais Heights Elementary Schools and the district's middle schools partner with Tamarack Nature Center to provide students with experiential learning on environmental issues. The Early Childhood Program also benefits from a partnership with the Center, which serves as a program site for "My Nature Preschool."
- **Vadnais Sports Center**
The Vadnais Sports Center serves as the home arena for the boys' and girls' high school hockey teams.
- **White Bear Center for the Arts**
Every elementary student receives five watercolor and drawing lessons annually through a partnership with the White Bear Center for the Arts. The partnership received a Local Government Innovation Award from the University of Minnesota Humphrey Institute in 2010.
- **YMCA**
Through a partnership with the YMCA, elementary students receive water safety lessons during the school year. Extended Day participants receive summer swimming lessons. The YMCA serves as the home pool for our girls' and boys' swimming and diving teams and as a site for an outreach teen and senior center. The district also partners with the Y on a childcare center at Birch Lake Elementary.
- **Business Partnerships**
Individual schools and programs partner with local businesses and organizations. The partnerships often are highlighted in our Community e-Newsletters. Find story archives at www.isd624.org.
- **Century College**
In our continued efforts to improve student learning and opportunities, our secondary schools are working with Century College to improve college readiness and increase concurrent enrollment options.
- **Community Partnerships**
The district partners with our ten municipalities to provide year-round recreational programs and athletic activities for the whole community through the Community Education and Recreation Program.
- **East Metro Integration District**
The district's involvement in the East Metro Integration District (EMID) offers inter-district partnerships and support for student and educators. The partnership coordinates students and educator programs.
- **University of Minnesota**
 - » White Bear schools have been identified as exemplary training sites for future teachers. Using a grant from the Bush Foundation, the University of Minnesota has designated four WBLAS schools as Professional Development Sites and provided additional resources for teachers and students.
 - » White Bear students receive unique science lab experiences that are relevant and hands-on, made possible with the support of a University of Minnesota Science Fellow who is funded with a grant from 3M.
- **Volunteers**
Community volunteers provide important mentoring, math and reading help and classroom support. Families actively support students through parent-teacher organizations.
- **White Bear Lake Area Educational Foundation**
The Foundation supports our schools with the help of local businesses, alumni, and community members. The Foundation provides teaching grants, scholarships, fellowships for teachers, an Angel Fund for families with special economic needs, and works closely with the White Bear Lake Area Alumni Association. In 2012-13, the Foundation provided support for the high school Writing Center in addition to music programming support.



WHITE BEAR LAKE AREA SCHOOL DISTRICT (ISD#624)
DR. MICHAEL LOVETT, SUPERINTENDENT
4855 BLOOM AVENUE, WHITE BEAR LAKE, MN 55110

Interactive pdf available online



HAISQHIA! Yog koj xav tau tsev kawm ntawv cov ntawv txhais ua lus Hmoob, thov hu tus Hmoob Liaison rau (651) 407-7623.
ATENCIÓN: Si usted necesita hablar con una persona que hable Español, por favor, llame al (651) 407-7625.

The White Bear Lake Area School District serves all or parts of Birchwood, Gem Lake, Hugo, Lino Lakes, Little Canada, Maplewood, North Oaks, Vadnais Heights, White Bear Lake and White Bear Township.

Elementary Schools

BIRCH LAKE / 651-653-2776
1616 Birch Lake Avenue
White Bear Lake, MN 55110

HUGO / 651-288-1800
14895 Francesco Avenue
Hugo, MN 55038

LAKEAIRES / 651-653-2809
3963 Van Dyke Street
White Bear Lake, MN 55110

LINCOLN / 651-653-2820
1961 Sixth Street
White Bear Lake, MN 55110

ONEKA / 651-288-1800
4888 Heritage Parkway North
Hugo, MN 55038

OTTER LAKE / 651-653-2831
1401 County Road H2,
White Bear Township, MN 55110

**MATOSKA INTERNATIONAL
IB WORLD SCHOOL**
651-653-2847
2530 Spruce Place
White Bear Township, MN 55110

VADNAIS HEIGHTS
651-653-2858
3645 Centerville Road
Vadnais Heights, MN 55127

WILLOW LANE / 651-773-6170
3375 Willow Avenue
White Bear Lake, MN 55110

Middle Schools

CENTRAL / 651-653-2888
4857 Bloom Avenue
White Bear Lake, MN 55110

SUNRISE PARK / 651-653-2700
2399 Cedar Avenue
White Bear Lake, MN 55110

High School Campuses

WBLAHS - NORTH CAMPUS
651-653-2920
(Grades 9-10)
5045 Division Ave
White Bear Lake, MN 55110

WBLAHS - SOUTH CAMPUS
651-773-6200
(Grades 11-12)
3551 McKnight Road
White Bear Lake, MN 55110

WBL AREA LEARNING CENTER
651-773-6400
2449 Orchard Lane
White Bear Lake, MN 55110

Other Sites

DISTRICT CENTER OFFICES
651-407-7500
4855 Bloom Avenue
White Bear Lake, MN 55110

EARLY CHILDHOOD PROGRAM
651-653-3100

- Normandy Park Education Center
2482 East Cty Rd F
White Bear Lake
- Tamarack Nature Center
5287 Otter Lake Rd
White Bear Township
- Hugo Elementary
14895 Francesca Ave, Hugo

WHITE BEAR AREA SENIOR PROGRAM / 651-653-3121
2482 East County Rd F
White Bear Lake, MN 55110

TRANSITION EDUCATION CENTER / 651-773-6051
13497 Fenway Blvd Circle N
Hugo MN 55038

Published by the White Bear Lake Area Schools Office of Communications.
©White Bear Lake Area School District, 2014

This Annual Report is based upon the Annual Report on Curriculum, Instruction and Student Achievement, which is required by Minnesota Statutes.

