

ISD624.ORG

2011-12

ANNUAL REPORT

TO THE COMMUNITY

WHITE BEAR LAKE AREA SCHOOLS





WHITE BEAR LAKE AREA SCHOOLS

Leading minds to learning,
 hearts to compassion,
 and lives to community service.

Core Values

The White Bear Lake Area School District builds quality lives and strong communities through compassion, integrity, respect, responsibility and service.

Mission

The mission of the White Bear Lake Area School District, a leader in innovative education and community partnerships, is to ensure our students:

- » develop a love for learning,
- » excel academically,
- » are inspired to realize their dreams, and
- » become engaged citizens with a global understanding

by challenging each student within a dynamic, respectful and inclusive environment that nurtures the unique talents and abilities of every student.

TABLE OF CONTENTS

4	STUDENT ACHIEVEMENT	18	FINANCE
13	SCHOOL CLIMATE	20	DISTRICT PROFILE
14	STUDENT AWARDS	20	SCHOOL BOARD
16	INNOVATION	22	PARTNERSHIPS

MESSAGE FROM THE SUPERINTENDENT

As you read this annual report, consider the stories of the individual students and staff members whose accomplishments are described and whose photos you see. Consider learning more by viewing videos and reading additional information on our website. Then consider visiting our schools, attending concerts, athletic events, and programs, and find out how you can be more involved in our stories of success!



Dr. Michael Lovett, Superintendent of Schools

Visit www.isd624.org/news/District-Videos.asp to view videos of feature stories.





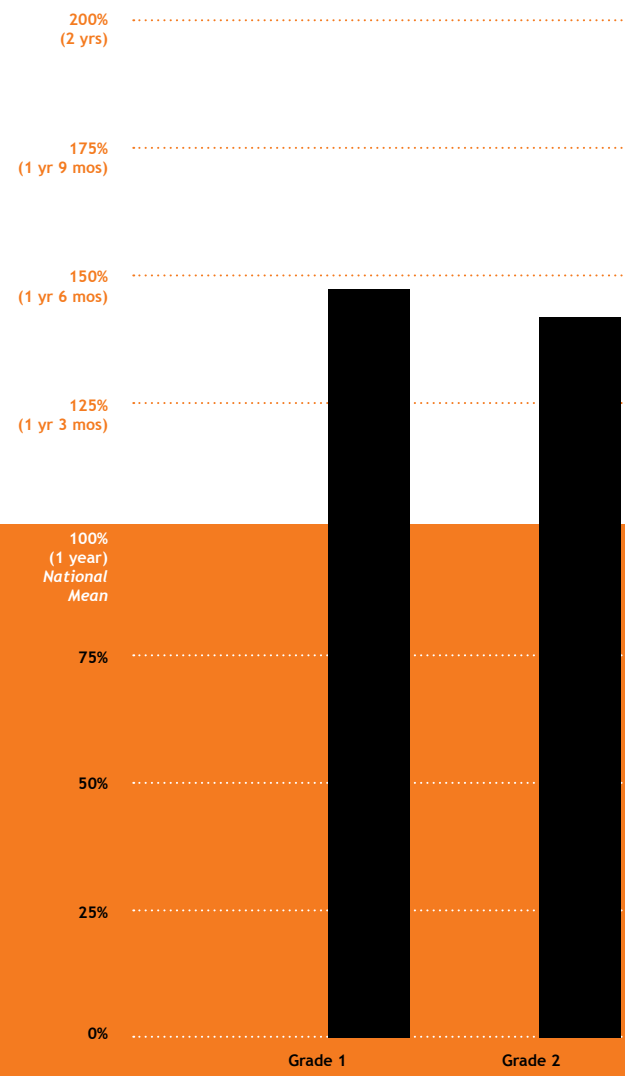
Average
math growth
1 year
7 months
Grades 1-10

Student growth

Measures of Academic Progress (MAP)
The District measures the academic growth of each student in grades one through ten with the Measures of Academic Progress (MAP) test, a nationally-normed assessment based on national and state standards. Compared to the national average for one year of growth, our student gains in 2011-12 were highly competitive.

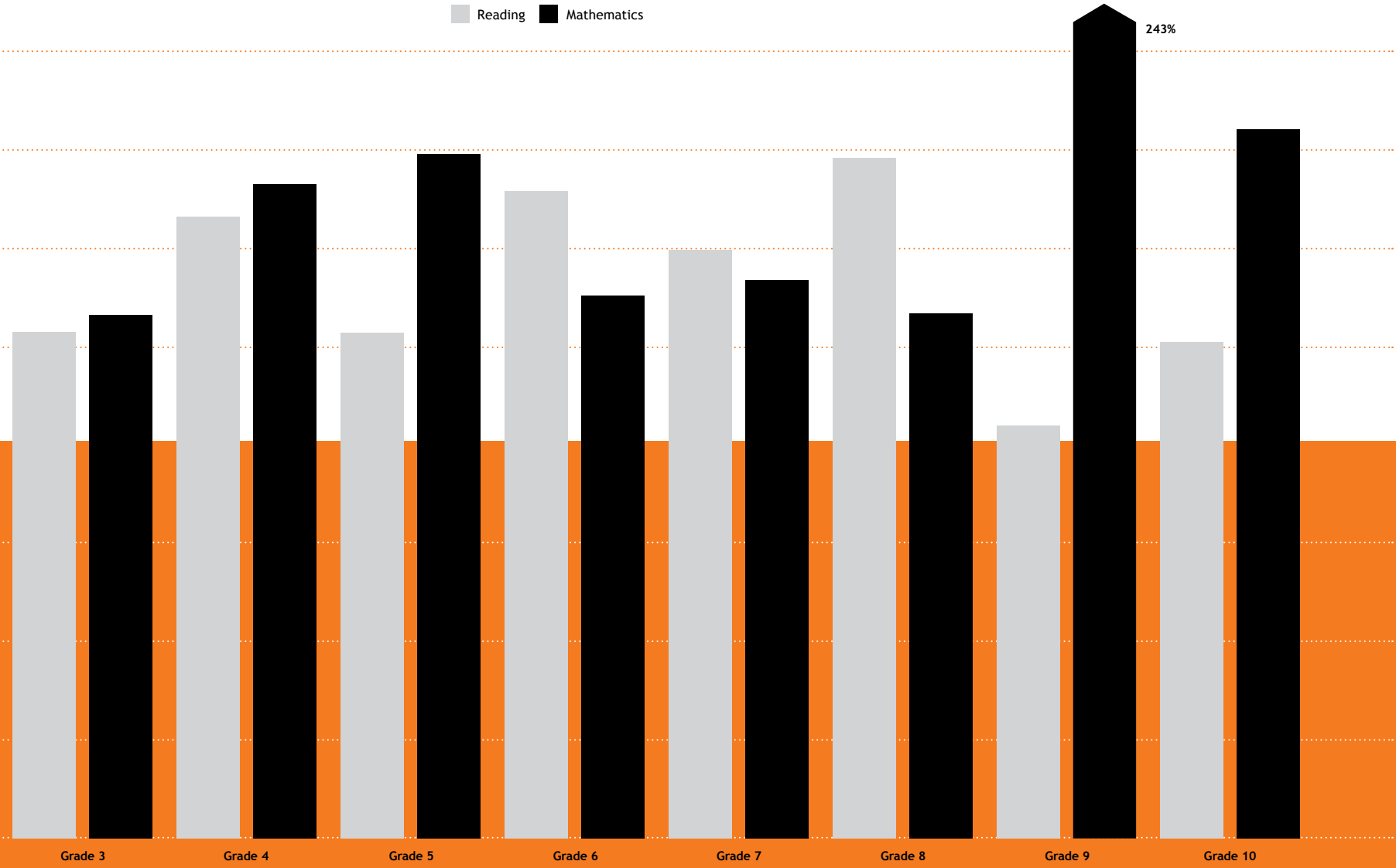
- Average reading gains in grades 1-10 were one year, four months.
- Average math gains in grades 1-10 were one year, seven months.

Average
reading growth
1 year
4 months
Grades 1-10



Measure of Academic Progress (MAP)
2011-12 School Year White Bear Lake Area Schools
Student Academic Growth

Reading Mathematics



Percent of Expected Growth
National Average Growth Equals 100% (One year)

Proficiency

Minnesota Comprehensive Assessments (MCA)

Student proficiency is measured by the Minnesota Comprehensive Assessment (MCA) tests, Minnesota's state requirement for testing under the Federal No Child Left Behind (NCLB) legislation.

WBLAS MCA COMPARISON TO STATE AVERAGES			
	State	WBLAS	WBLAS % above state
Writing	92	94	+2
Reading	75	79	+4
Mathematics	61	68	+7
Science	51	58	+7

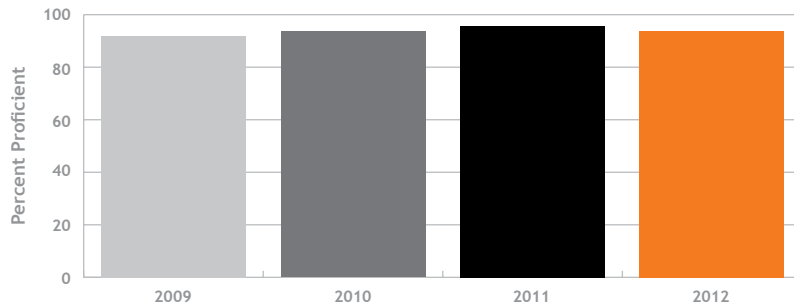
Adequate Yearly Progress (AYP):

- Met the Federal Adequate Yearly Progress (AYP) threshold in 2012 for the third year in a row. White Bear was one of only two school districts in the East Metro area to do so for all three years.
- Made state targets for reading and math with all groups of students for the third year in a row.

WBLAS makes AYP for 3rd year in a row. *One of only two districts in the East Metro area to do so.*

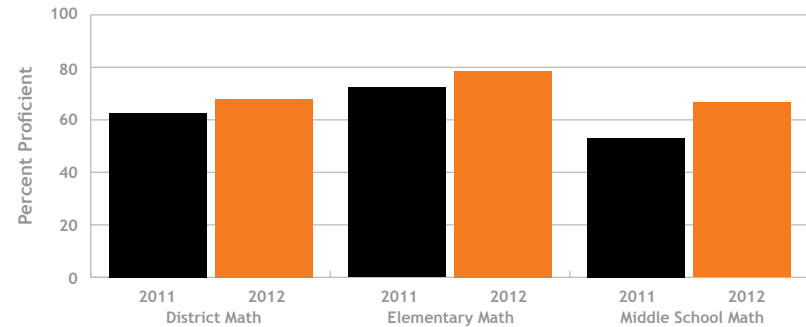
WRITING PROFICIENCY

WBLAS - North Campus 9th Grade MCA Grad Written Composition Test District 4-Year Trend



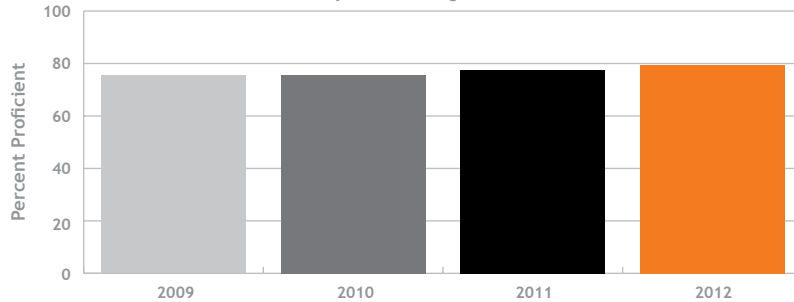
MATH PROFICIENCY

WBLAS MCA II Math Results - 2-Year Trend (A new MCA Math test was administered starting in 2011)



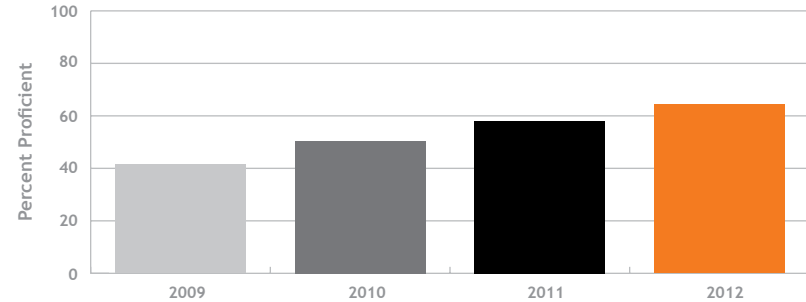
READING PROFICIENCY

Elementary MCA II Reading - District 4-Year Trend



SCIENCE PROFICIENCY

Elementary Science 4-Year Trend





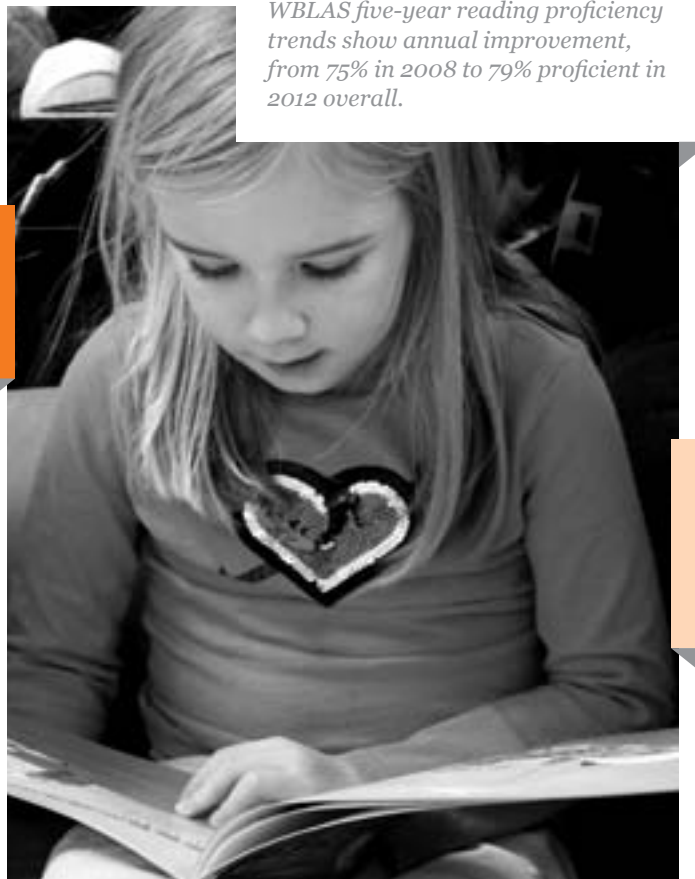
Science scores rise

Elementary science scores are up 20 percentage points since 2009.



Reading scores rise

WBLAS five-year reading proficiency trends show annual improvement, from 75% in 2008 to 79% proficient in 2012 overall.



Math scores rise

The district's increase in math was 5.4 percentage points for 2012.



High Expectations & Enrichment

Number 2 in state

White Bear Lake Area Schools ranked number two in the state for number of students participating in College in the Schools (CIS) courses through the University of Minnesota for 2011-12. Students had the option to take 10 CIS courses.

\$1.4 million

The total value of credits earned by WBLAHS students in CIS and AP courses during 2011-12 was \$1.4 million at University of Minnesota tuition rates.

STEM initiatives

The middle schools and high school offered courses through Project Lead the Way, a rigorous, innovative program focused on science, technology, engineering and mathematics.

International Baccalaureate

Central and Sunrise Park Middle Schools were accepted as International Baccalaureate Candidate Schools for the Middle Years Program (MYP) in June 2012.

*Rising to
the challenge*

4 out of 10 middle school students
took advanced or enriched courses.

6 out of 10 seniors
took college courses.

Early Childhood

Class options at Tamarack Nature Center, Normandy Park and Hugo Elementary expanded after a program review was completed in 2010-11. Additionally, a family literacy class was first initiated in November of 2011 and became so popular it filled to capacity for the 2012-13 academic year.

Elementary

- A review of Gifted and Talented programming was completed with major changes scheduled for the 2013-14 school year.
- Matoska International IB World School, an elementary school option for all families, offered Spanish language in grades K-5.
- Beginning in 2012-13, all other elementary schools are offering a world language in grades 4 and 5 (Spanish or Chinese) with expansion planned to grades K-5 beginning in 2013-14.

Middle School

- Students had the opportunity to take Spanish, French or German during each of their middle school years. Chinese is added as an option beginning in 2012-13.
- For 2011-12, 40% of middle school students at Sunrise and Central took at least one advanced or enriched class in math, science, social studies, or language arts.
- In June 2012, White Bear Lake Area School District middle schools were accepted as IB Candidate Schools.

High School

- **College-level classes** - White Bear Lake Area High School offered a total of 30 college-level courses to students in 2011-12. This is the highest number of college course offerings in our area. The number of students enrolling in these classes is increasing.
- **Increased rigor** - The percentage of high school seniors taking college credit courses rose to 60% in 2011-12 from 56% in 2010-11. The number of AP Scholars in 2012 rose to 72, up from 42 in 2011.



Special Services

White Bear Lake Area Schools have high expectations for all students and offer a continuum of specialized instruction for students with special needs. Our programs are individualized and comprehensive.

Seventy-two students were honored as AP Scholars for 2012,

up almost 30 students over any previous year.



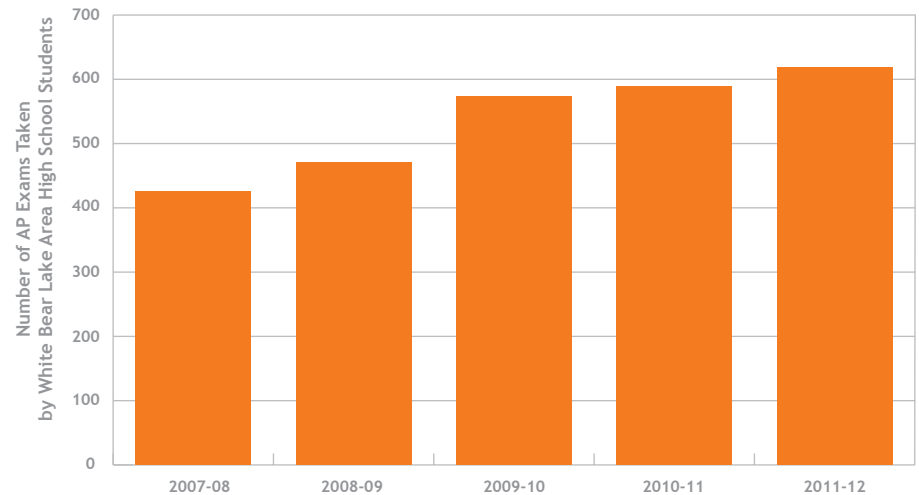
Preparation for College

Advanced Placement (AP) Classes

The Advanced Placement (AP) program is a national program administered through the College Board that allows students the opportunity to pursue college-level classes while in high school. Qualifying test scores are accepted as credits earned by colleges and universities across the nation and internationally.

A total of 543 White Bear Lake Area High School students enrolled in a total of 779 Advanced Placement classes. 435 students sat for 620 AP exams during the 2011-12 academic year.

ADVANCED PLACEMENT (AP) PROGRAM 2007-12



2012 ADVANCED PLACEMENT SCHOLARS

40 AP Scholars

Steven Aviles	Andrea Ek-Pangerl	Brandon Libby
Joshua Bartness	Taylor Grasdalen	Jake Marzitelli
Alexander Berlin	Desirae Hammond	Caitlin Mccoy
Nicholas Binger	Joua Her	Miles Mcparland
Jenna Binsfeld	Nicole Hinze	Zachary Meyer
Laurel Bruesehoff	Melynda Hoover	Carl Molnar
Jordan Buie	Amanda Kirkland	Joseph Nasvik
Mackenzie Burnham	Anthony Larson	Erin O'brien
Alyssa Carney	Hanna Larson	Brady Och
Madisen Crow	Cassandra Le	Frances Rossini
Tanner Eischen	Sara Leonhart	Benjamin Siers

Jacquelyn Sittler
Hunter Slack
Ryan Solomon
David Trudeau
Joey Viavattine
Emily Wosika
Michelle York

18 AP Scholars with Honor

Adam Alver	Brandon Johnson
Justin Anibas	Regina Kurandina
Grady Bell	Jordan Lacher
Katherine Bissen	Abbie Mozzetti
Justin Brill	Addison Pierskalla
Laurel Disera	Aaron Sommer
Sarah Falk	Alexander Thompson
John Galatowitsch	Kaitlyn Walek
Eric Gebeke	
Caroline Held	

16 AP Scholars with Distinction

Andrew Gardner	Lindsay Lundgren
Zachary Hubinger	Michael Marier
Claire Jokinen	Stephanie Noonan
Evan Jorissen	Madeline Phelps
Lillian Kallestad	Jay Rausch
Vincent Kancans	Andrea Scott
Christine Kasprisin	Luke Wennen
Sean Kasprisin	Andrea Woodberry



15

Advanced Placement (AP) Classes

- » Art History
- » Biology
- » Calculus A-B
- » Calculus B-C
- » Chemistry
- » English Language & Composition
- » English Literature & Composition
- » European History
- » Macroeconomics
- » Microeconomics
- » Music Theory
- » Physics
- » Statistics A-B
- » Studio Art
- » U.S. Government & Politics

5

Project Lead the Way (PLTW) Classes

- » Introduction to Engineering Design
- » Principles of Engineering
- » Digital Electronics
- » Biotechnical Engineering
- » Civil Engineering and Architecture (began in 2012-13)

Project Lead the Way
STEM classes are nationally-
certified courses that allow
students the opportunity
to earn university credits.

10

College in the Schools (CIS) Classes

- » CIS Intro Literature
- » eCIS Writers Studio
- » CIS American History to 1865
- » CIS US History Since 1865
- » CIS French 1003
- » CIS French 1004
- » CIS German 1003
- » CIS Spanish 1003
- » CIS Spanish 1004
- » eCIS Mathematical Modeling and Predictions

College in the Schools classes are introductory-level college courses offered by the University of Minnesota. A total of 207 White Bear Lake Area High School juniors and seniors enrolled in a total of 278 courses during the 2011-12 academic year.

Advancement via Individual Determination (AVID)

White Bear Lake Area High School began implementation of the Advancement via Individual Determination (AVID) program in the fall of 2010. The program offers rigorous instruction in academic “survival skills” and college-level skills to high school students in the academic middle, many of whom will be the first in their family to attend college.

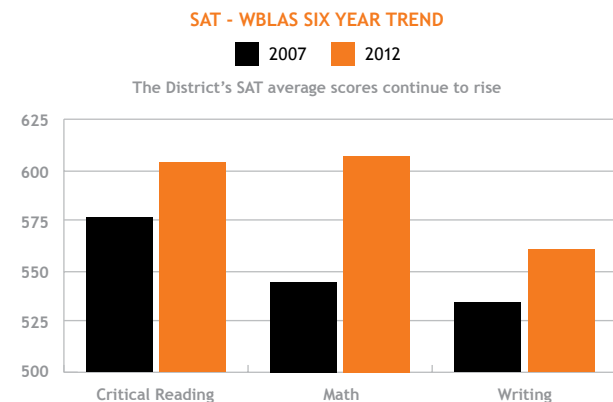
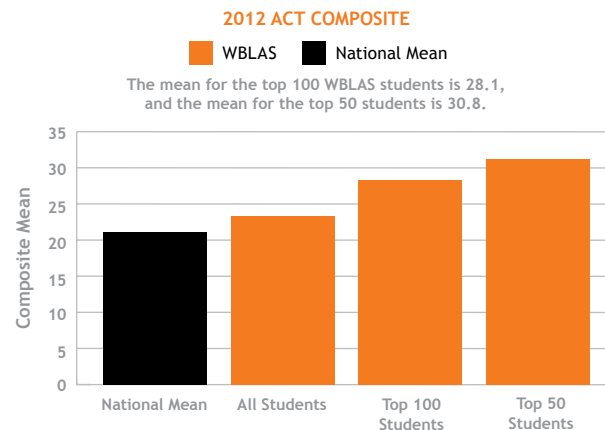
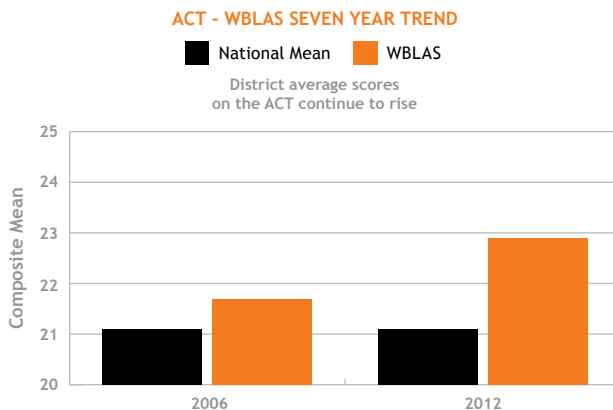
Fifty-two White Bear Lake Area High School students participated in the AVID during the 2011-12 academic year, more than doubling the enrollment of the program’s inaugural year in 2010-11. The number of students doubled again in 2012-13, with 110 students in grades 8-11 enrolled in the program.

Post-Secondary Enrollment Option (PSEO)

Juniors and seniors at White Bear Lake Area High School have the opportunity to attend Minnesota post-secondary institutions as high school students. Thirty-three members of the Class of 2012 were PSEO students.

ACT

The ACT is the most commonly taken college entrance exam in Minnesota, required by most Minnesota colleges. White Bear Lake Area Schools encourages all students to take the ACT test. There is a strong relationship between taking challenging courses, such as honors, AP and CIS classes, and increased scores on college entrance exams.

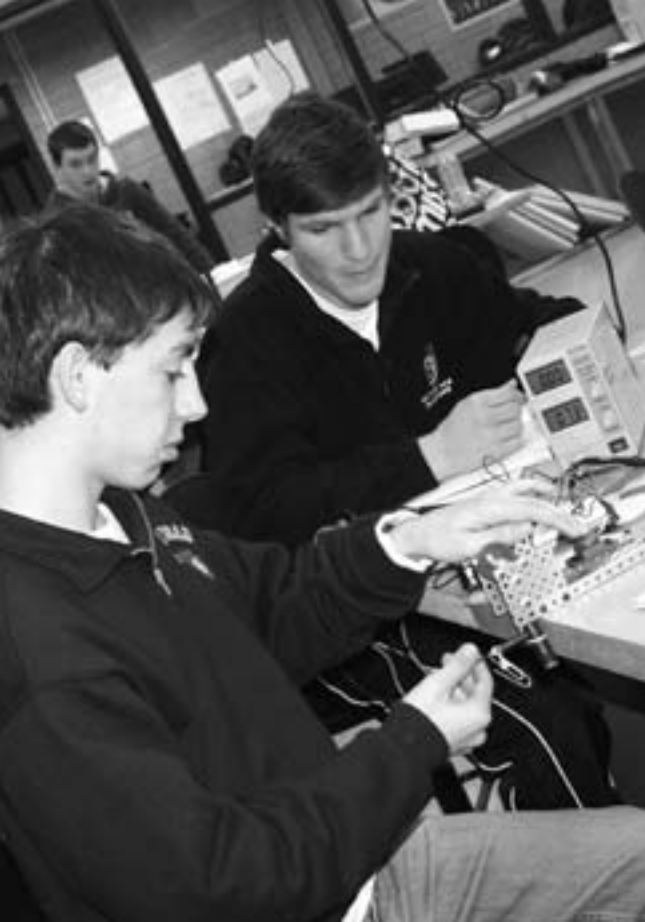


SAT

The SAT college entrance exam required by many nationally competitive colleges and universities is taken by fewer students in the District than the ACT. It is not generally required of colleges or universities in the Upper Midwest.

Students had the opportunity to earn college credit in 30 courses at the high school.

This is the highest number of college course offerings in the our area.



RIGOROUS CURRICULUM

- **Science**
Factors contributing to science score increases at the elementary level included a focus on engineering for elementary science and elementary science notebook experiences, through which elementary students learn to make field journals to observe and record data simulating the work of scientists in the field.
- **Writing**
Ninth grade writing scores have shown a multi-year rise, moving WBLAS students from just above average to tied for the highest proficiency in the East Metro area for 2011. For 2012, proficiency is at 94%, two percentage points above the state average.
- **Reading**
Factors contributing to elementary improvement include innovative literacy training for teachers and successful implementation of a highly structured intervention program. All students are challenged to continue to grow, and students who struggle with a concept or unit receive timely support.
- **Math**
District math scores rose another 5.4 percentage points for 2012, reflecting a net of more than 250 additional students meeting proficiency.

- **Curriculum Advisory**

The Community Curriculum Advisory Committee (CCAC) includes parents, students, teachers, administrators and community members. They serve as a sounding board for the community, gain knowledge about the District's curriculum and its development, and positively influence changes within each curriculum area.

2011-12 NATIONAL MERIT SCHOLARSHIP HONOREES

- *Justin Buhl* was a National Merit Semi-Finalist.
- *Desirae Hammond, Caroline Held, Zachary Hubinger* and *Stephen Taylor* were commended.

RESPONSE TO INTERVENTION (RtI)

This framework is a system of high-quality instruction and tiers of intervention matched to student need. In 2011-12, Hugo, Oneka, and Lincoln Elementary Schools were three of only 115 schools across the country chosen to participate in an RtI study with the U.S. Department of Education's Institute of Education Sciences.

COMMUNITY SUPPORT

- Community volunteers provide important mentoring, math and reading help and classroom support. Families actively support students through parent-teacher organizations.
- In November of 2011, the White Bear Lake Area community supported the district's local operating levy renewal with a 73% to 27% margin. This was one of the largest margins in the state.

EXCELLENT TEACHING AND SUPPORT

White Bear Lake Area High School mathematics teacher Matt Danielson was recognized as the district's 2011 Teacher of the Year and was a semi-finalist for the state Teacher of the Year program.

Staff Professional Development

While individual teachers personally invest in ongoing training through advanced coursework, the school district during 2011-12 focused on several areas key to strengthening student achievement including advanced literacy training and a professional development focus on elementary science and middle school math. The continuation of a program entitled "Authentic Intellectual Work" (AIW) also helps teachers develop the understanding and skills to raise the level of student engagement.

» **Archery**

WBLAS Archery team members, split into two teams, placed second and sixth out of 12 teams in the 2012 state competition. At nationals, the team placed 21st out of 126 high school teams.

» **National Merit**

Students with the highest PSAT scores qualify for recognition in the National Merit® Scholarship Program. Four students were commended, one a semi-finalist.

» **AP Scholars**

Seventy-two WBLAHS students were recognized as AP Scholars, granted to students who receive scores of 3 or higher on three or more AP exams.

» **Cheer Team**

The White Bear Lake Area High School varsity cheerleaders took first place at the MCCA State Cheer Off finals for the second year in a row and placed first at the National Cheerleaders Association High School Cheerleading National Championship.

» **Sailing**

WBLAHS Sailing Team athletes were second in the state competition. Sailors Eddie Cox and Natasha Skaarud, with alternate Ema Johnson, earned first place at a regional qualifier and were second at the Great Oaks National Regatta.

» **Girls' Soccer**

Alexis Foley was named Ms. Soccer for the State of Minnesota.

» **Boys' Cross Country Team**

The Boys Cross Country team finished second out of 16 teams at the section meet and qualified for the Minnesota State Cross Country Championships.

» **Girls' Cross Country**

Two individuals - Bethany Kozak and Allison Ternes - qualified for the State Meet.

» **Fall Musical**

The WBLAHS Theatre Department received outstanding overall honors from the Hennepin Theatre Trust's SpotLight Music Theatre Program for its fall musical production of "How to Succeed in Business Without Really Trying." Four students were eligible to compete for the prestigious Triple Threat Award. Emily Nies was chosen to travel to New York City in the summer of 2012 to represent Minnesota and compete in the Jimmy Awards.

» **WBLAHS Mariners Choir**

The Mariners from WBLAHS - South Campus were chosen as one of only four solo choirs to be featured at the annual Concordia College (Moorhead) Choral Festival.

» **State 9-10 High School Honor Choir members**

Students Luke Gion, Taylor Okonek and Olivia Shepler were selected to participate in the 2012 State 9-10 High School Honor Choir program.

» **ACDA Regional HS Honor Choir participants**

Emily Nies and Sarah Hiner were selected from more than 1000 auditionees to participate in a 100-member Regional Honor's Choir at the North Central Division of ACDA (American Choral Director's Association).

» **All-State Band**

Three WBLAHS band participants were chosen as members and one was named an alternate for the All-State Band, with members drawn from all regions and conferences.

» **One-Act Play**

The WBLAHS One Act Play won Sections to advance as one of the eight teams in the State One Act Festival with "Radium Girls," a story about factory workers in 1928 who become ill after being exposed to radium in the workplace.

» **Boys Swimming and Diving Team members**

Two Bears divers, Harry Baden and Patrick Slagerman, represented White Bear Lake Area High School at the swimming and diving state meet.

» **Gymnastics**

Senior Kellie Dougherty capped off a successful high school gymnastics career by winning three of four events at the Section 4AA Gymnastics Meet and the all-around title. At the state meet, she earned third place in the uneven bars.

» **Alpine Ski**

White Bear Lake High School Alpine skier Eddie Cox skied to a fifth-place finish at the State Alpine Championships.

» **Wrestling**

For the third consecutive year, the WBLAHS wrestling team made it to state. Once they were there, they earned the AAA consolation championship. Eight members of the team also competed individually.

» **Middle School Honor Band**

Three 8th grade band students at Central Middle School they were selected to participate in the MBDA 6-8 Grade Honor Band, essentially a middle school All-State Band.

» **Nordic Ski**

Nordic skier Allison Ternes represented White Bear Lake Area High School at the Nordic ski state meet with the District's best State finish in 10 years.

» **Girls' Basketball Team**

The WBLAHS girls' basketball team won the Section 4AAAA title and earned their fourth consecutive trip to the Class AAAA state tournament.

» **State and National History Day**

The district had 25 National History Day entries at this year's state competition, a count that breaks the district's previous record of 24. Middle school student Kylie Noonan competed at the national competition in Washington, D.C.

» **Speech Team**

Two members of the WBLAHS Speech Team - Julie Berrisford and Anthony Larson - competed at the state competition.

» **Bus Safety Poster Contest**

Six District elementary students won awards in the State Bus Safety Poster Contest.

» **Girls' Golf**

WBLAHS Girls' Golf Team athlete Abby Mozzetti competed in the state competition.

» **Girls' Track**

WBLAHS Girls' Track Team athletes competed in the State Track Meet. Senior Angie Guenther placed third in the state in discus.

» **Boys' Track Team**

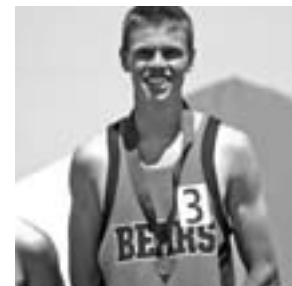
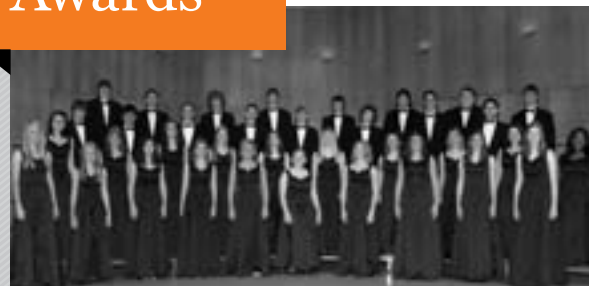
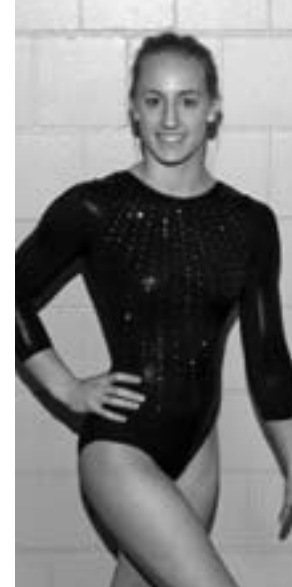
The WBLAHS Boys Track Team won the section True Team meet and competed in the State True Team meet. Six team members competed in the State Track Meet. Senior Eric Gebeke placed first in the 800.

» **WBLAHS Student Council members**

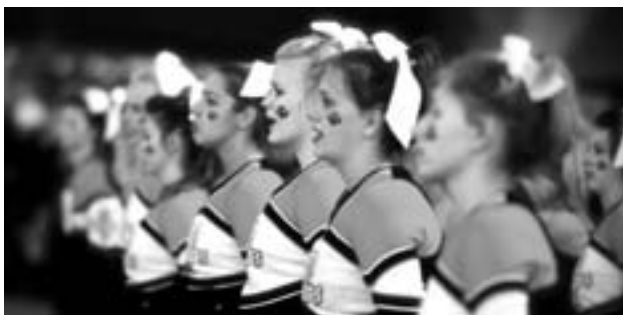
The WBLAHS - South Campus Student Council was awarded with the Outstanding Student Council of the Year during the Minnesota Association of Student Councils State Convention.

» **Trap-shooting Team**

The District's Trapshooting Team finished seventh in the 2012 State Tournament of the Minnesota State High School Clay Target League. KayCee Nelson earned Female High Gun 1st place.



State and National Student Awards



Innovation

Innovative Technology

WBLAS is committed to integrating technology in every classroom in order to engage students, accelerate student learning, and ensure that students gain the 21st century skills they need to succeed. These goals are reflected in current practices as well as new initiatives for 2011-12.

• Technology Integration

Technology integration is expanding across our schools. New tools are allowing for more collaboration, more personalized communication, more authentic ways for students to demonstrate learning and more ways for parents to stay connected to their child's learning.

» We added instructional technology coaches at each building to support teachers and help them make best-practice use of these resources. These teacher leaders model technology integration in their own classrooms and offer training and assistance to their colleagues. This model ensures that we are maximizing resources in White Bear while sharing our best ideas across grade levels, departments and buildings.

• Infrastructure

» WBLAS continues to strengthen and expand our technology infrastructure. We added ports in classrooms to support additional computers, rebuilt the wireless network and doubled our Internet bandwidth from 100 Mbps to 200 Mbps to guarantee we are meeting the growing needs of our learners.

» With nearly 3,000 computers in the district, we maintain a student to computer ratio of less than 3:1. We also continue to expand our use of interactive whiteboards and now run 346 *SMART Boards* across WBLAS.

• iPads and ChromeBooks

» We employ 400 *iPads* to ensure technology is easy to use, equitable, authentic and innovative. Unique usage of *iPads* included work in K-1 classrooms, teacher evaluations, special education, middle school math, and the buildings and grounds department.

» Always seeking to provide the best technology for each situation, we deployed 50 *ChromeBooks* across the District in 2011-12. These devices offer instant access to the collaborative features of *Google Apps*, *Schoology* and countless other online resources.

• White Bear Apps and Schoology

» 2011-12 was our first school-year using *Google Apps*. WBLAS staff and students incorporated these tools into our daily practice, using them to communicate more efficiently, collaborate more easily, provide more equitable access, and offer more timely feedback.

» We tied White Bear Apps to *Schoology* allowing students and staff to log into both systems with one password and offering one place for students to find, reflect on, create and hand in digital content. Teachers use *Schoology* to communicate with parents and students alike. The learning management tool also serves as a digital extension of the physical classroom, a place where students and staff are continuing discussions, sharing ideas and building understanding. All teachers will be using this system by the start of the 2013-14 school year.





Communication Innovation

The District embraces innovative new communications tools to connect with families and community members.

- **Community e-Newsletter** - The Community e-Newsletter, sent out twice a month to families and community members, covers School Board proceedings, student and staff achievements, and school and Community Education offerings.
- **Stay Social** - The White Bear Lake Area Schools joined new social media circles in 2012. Find links to the District's Facebook, Twitter and YouTube accounts at www.isd624.org.
- **www.isd624.org** - New websites, launched by the District and schools in the summer of 2012, are designed to be easy-to-use and informational.
- **District Mobile App** - In December of 2012, WBLAS will launch a mobile app that will allow students, parents and community members access to the important District news, information and resources.

Innovation in the News

Many of the District's students, staff members and programs were highlighted in the news as examples of innovation and excellence.



Find links to media stories at www.isd624.org/news/WBLAS-in-th-News.asp



General fund revenue

76%
*invested
 directly into
 the classroom*

Ranks the district among the highest
 in the Metro

Finance

Financial Management

To help the District meet its educational goals, the White Bear Lake Area Schools remain committed to fiscal responsibility and a balanced budget to ensure that maximum resources reach our classrooms.

White Bear Lake Area Schools invested 76% of general fund revenue directly into the classroom, which ranks the district first compared to neighboring districts. Over the past three years, we have put a greater percentage of general fund revenue into classrooms than any neighboring districts.

District Efficiencies:

- Second-most efficient in transportation cost per student among area districts.
- Among the most efficient districts with some of the lowest administrative costs per student.

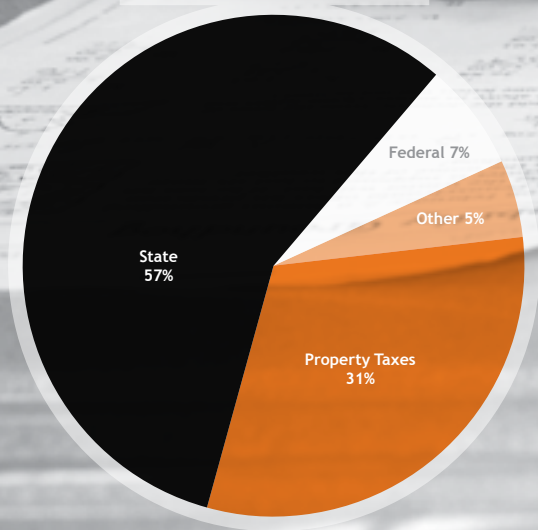
Stewardship:

For 2011-12, the White Bear Lake Area Schools continued to demonstrate strong stewardship to our communities.

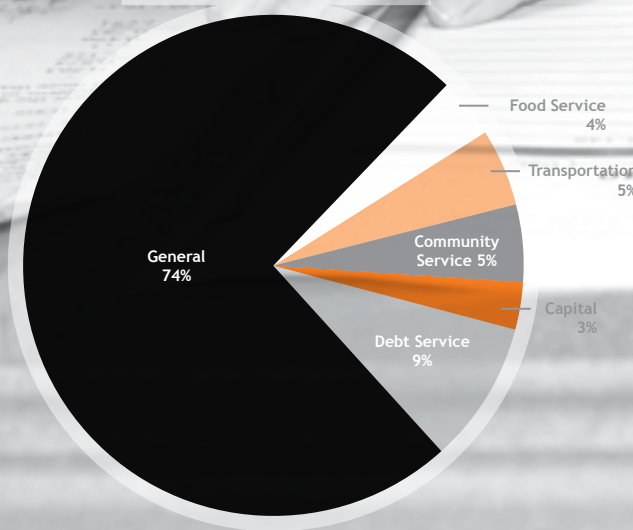
- We are the only Minnesota district to be recognized for excellence in financial reporting by the Association of School Business Officials and Government Finance Officers Association for 12 consecutive years.
- The District was awarded a AA bond rating from Standard and Poor's in 2008, 2011 and again 2012. Only 12 districts in the state have a rating of AA or higher, which puts us in the top 3%.
- Over the past three years, the District has redirected more than \$2 million into the classroom and added programs by reducing expenses outside of the classroom.
- We partnered with Hallberg Engineering to reduce our energy use by 6% during our second year in the Schools for Energy Efficiency (SEE) program, avoiding almost \$90,000 in energy costs from October 1, 2011 to September 30, 2012.
- Our supportive community passed a local operating levy renewal with a 73% to 27% margin in November, 2011.
- In April 2012, the District completed refinancing of all long-term debt, saving taxpayers more than \$1.5 million.



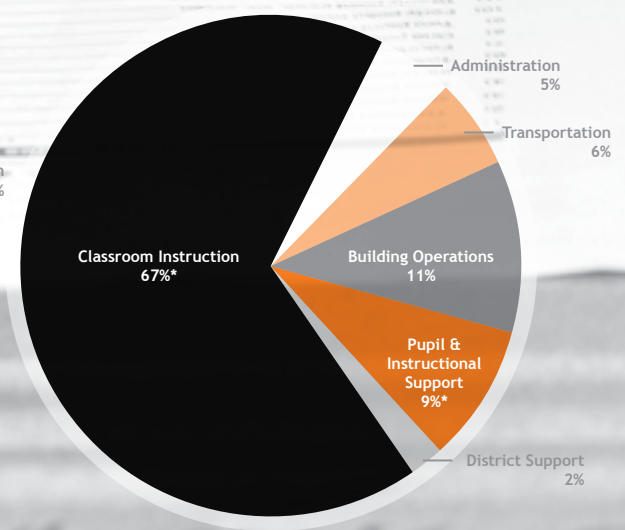
**2012
REVENUE ANALYSIS BY SOURCE**



**2012
EXPENSE ANALYSIS BY FUND**



**2012
EXPENSE ANALYSIS BY PROGRAM**



*Classroom Instruction and Pupil & Instructional Support costs represent 76% of the District's expenses, which ranks the district among the highest in the Metro for general fund revenue invested directly into the classroom.

In addition to English, students in our district

speak
38

Home languages

- Afrikaans
- Amharic
- Arabic
- Balinese
- Bantu
- Bengali
- Cambodian/
Khmer
- Cebuano
- Chinese, Mandarin
- French
- Fulah
- German
- Gio
- Greek
- Hindi
- Hmong
- Igbo
- Japanese
- Kiswahili, Swahili
- Lao, Laotian
- Latvian
- Lithuanian
- Luganda, Ganda
- Marathi
- Minangkabau
- Polish
- Punjabi
- Russian
- Samoan
- Slovak
- Somali
- Spanish
- Tamil
- Telugu
- Thai
- Turkish
- Ukrainian
- Vietnamese

District profile (2011-12)

The White Bear Lake Area School District serves all or parts of Birchwood, Gem Lake, Hugo, Lino Lakes, Little Canada, Maplewood, North Oaks, Vadnais Heights, White Bear Lake and White Bear Township.

STUDENT DEMOGRAPHICS 2011-12	
K-T+ Enrollment	8,022
Free/Reduced Lunch	27.3%
English Language Learner	4.7%
Special Education	12.5%
American Indian/ Alaskan Native	.8%
Asian/Pacific Islander	7.7%
Hispanic	4.0%
Black (non-Hispanic)	5.6%
White (non-Hispanic)	81.9%

STUDENT ENROLLMENT 2011-12	
Birth-Pre-K	703
K-5	3,653
Middle School (Grades 6-8)	1,745
High School (Grades 9-12)	2597
Transition Plus (Special Ed - ages 18-21)	27
DISTRICT TOTAL K-T+	8,022
DISTRICT TOTAL BIRTH-T+	8,725

DISTRICT 624 STAFF PROFILE 2011-12		
	DISTRICT 624	STATE
Teachers with Master's Degrees	73%	54%
Teachers with fewer than 3 years experience	8%	7%
Teachers with more than 10 years experience	65%	62%
Teachers meeting federal "Highly Qualified" requirements	100%	98%

Source: Minnesota Department of Education

Source: Minnesota Department of Education

School Board Members

Kim Chapman; Janet Newberg; Bob Shevik; George Kimball, Treasurer; Lori Swanson, Chair; Chris Hiniker, Vice Chair; Cathy Storey, Clerk





[www.isd624.org/
about/Strategic-
Planning.asp](http://www.isd624.org/about/Strategic-Planning.asp)

Strategic Planning

During the 2011-12 academic year, the District began work on 22 of the 50 specific result statements identified during the 2010-11 community-driven Strategic Planning process.

Resulting changes being implemented during the 2012-13 academic year include: the addition of elementary world language and a middle school International Baccalaureate program, Guidance Office changes, increased communication initiatives, and many more.

Core Values

The White Bear Lake Area School District builds quality lives and strong communities through compassion, integrity, respect, responsibility and service.

Mission

The mission of the White Bear Lake Area School District, a leader in innovative education and community partnerships, is to ensure our students:

- develop a love for learning,
 - excel academically,
 - are inspired to realize their dreams, and
 - become engaged citizens with a global understanding
- by challenging each student within a dynamic, respectful and inclusive environment that nurtures the unique talents and abilities of every student.

Strategies

More than 100 action team members came together to plan action steps related to the six action teams below.

- We will develop a comprehensive understanding of our students' needs and interests to ensure students are challenged and excelling academically.
- We will create and implement a plan for global experiences and relationships to further understand world connections.
- We will ensure our facilities support our district's mission and objectives.
- We will create a district-wide culture that inspires innovation, a passion for learning, and confidence to pursue dreams.
- We will build a network of partnerships to provide personal and educational growth and service opportunities for students.
- We will foster connections with and among students and staff members to ensure all feel valued, supported and understood; and we will establish an environment that cultivates understanding and respect for differences among people.

Full details of the Strategic Planning process can be found at www.isd624.org/about/Strategic-Planning.asp.



District Partnerships

- Hangzhou Foreign Languages School**
 White Bear Lake Area Schools partners with Hangzhou Foreign Languages School, located in Hangzhou, China, for teacher and cultural exchanges. Teachers serve residencies in each school. Expanded opportunities for students begin in 2012-13.
- International Exchange Partnerships**
 WBLAHS partners with schools in Meaux, France and Leipzig, Germany to provide international exchange experiences for students in German and French world language programs.
- Lakeshore Players**
 The District works with Lakeshore Players, a highly-regarded community theater based in White Bear Lake, to provide after school classes and workshops for students.
- MacPhail Center for Music**
 Birch Lake Elementary partners with MacPhail Center for Music to offer an enhanced music program including piano and violin. For 2012-13, MacPhail provides free clinics for secondary band and choir students. Additional after-school and weekend music lesson opportunities are offered to the whole community.
- Tamarack Nature Center**
 Otter Lake and Vadnais Heights Elementary Schools and the district's middle schools partner with Tamarack Nature Center to provide students with experiential learning on environmental issues throughout the school year. The Early Childhood Program also benefits from a partnership with the Center, which serves as a program site.
- Vadnais Sports Center**
 The Vadnais Sports Center serves as the home arena for the boys and girls high school hockey teams.
- White Bear Center for the Arts**
 Every elementary student receives five watercolor and drawing lessons annually through a partnership with the White Bear Center for the Arts. The partnership received a Local Government Innovation Award from the University of Minnesota Humphrey Institute in 2010.
- YMCA**
 Through a partnership with the YMCA, elementary students receive water safety lessons during the school year. Extended Day participants receive summer swimming lessons. The YMCA serves as the home pool for our girls' and boys' swimming and diving teams and as a site for an outreach teen and senior center. The district also partners with the Y on a childcare center at Birch Lake Elementary.
- Business Partnerships**
 Individual schools and programs partner with a variety of local businesses and organizations. The partnerships often are highlighted in our Community e-Newsletters. Find story archives at the District website, www.isd624.org.
- Century College**
 In our continued efforts to improve student learning and opportunities, our secondary schools have been working with Century College to improve college readiness and increase concurrent enrollment options.
- Community Partnerships**
 The District partners with our ten municipalities to provide year-round recreational programs and athletic activities for the whole community through the Community Education and Recreation Program.
- East Metro Integration District**
 The District's involvement in the East Metro Integration District (EMID) offers inter-district partnerships and support for student and educators. The partnership coordinates student and educator programs
- University of Minnesota**
 - » White Bear schools have been identified as exemplary training sites for future teachers. Using a grant from the Bush Foundation, the University of Minnesota has designated four District schools as Professional Development Sites and provided additional resources for teachers and students.
 - » White Bear students receive unique science lab experiences that are relevant and hands-on, made possible with the support of a University of Minnesota Science Fellow that is funded with a grant from 3M.
- Volunteers**
 Community volunteers provide important mentoring, math and reading help and classroom support. Families actively support students through parent-teacher organizations.
- White Bear Lake Area Educational Foundation**
 The Foundation supports our schools with the help of local businesses, alumni, and community members. The Foundation provides teaching grants, scholarships, fellowships for teachers, an Angel Fund for families with special economic needs, and works closely with the White Bear Lake Area Alumni Association. The Foundation is providing major funding to support a high school Writing Center beginning in the fall of 2012.





WHITE BEAR LAKE AREA SCHOOL DISTRICT (ISD#624)

DR. MICHAEL LOVETT, SUPERINTENDENT
4855 BLOOM AVENUE, WHITE BEAR LAKE, MN 55110

isd624.org

Interactive pdf available online



*LUS CEEB TOOM! Yog koj xav tau daim ntawv no txhais ua lus Hmoob, thov hu rau (651) 407-7623.
ATENCIÓN: Si usted necesita hablar con una persona que hable Español, por favor, llame al (651) 407-7625.*

The White Bear Lake Area School District serves all or parts of Birchwood, Gem Lake, Hugo, Lino Lakes, Little Canada, Maplewood, North Oaks, Vadnais Heights, White Bear Lake and White Bear Township

Elementary Schools

BIRCH LAKE / 651-653-2776
1616 Birch Lake Avenue, White Bear Lake, MN 55110

HUGO / 651-288-1800
14895 Francesco Avenue, Hugo, MN 55038

LAKEAIRES / 651-653-2809
3963 Van Dyke Street, White Bear Lake, MN 55110

LINCOLN / 651-653-2820
1961 Sixth Street, White Bear Lake, MN 55110

ONEKA / 651-288-1800
4888 Heritage Parkway North, Hugo, MN 55038

OTTER LAKE / 651-653-2831
1401 County Road H2, White Bear Township, MN 55110

MATOSKA INTERNATIONAL / 651-653-2847
IB WORLD SCHOOL
2530 Spruce Place, White Bear Township, MN 55110

VADNAIS HEIGHTS / 651-653-2858
3645 Centerville Road, Vadnais Heights, MN 55127

WILLOW LANE / 651-773-6170
3375 Willow Avenue, White Bear Lake, MN 55110

Middle Schools

CENTRAL / 651-653-2888
4857 Bloom Avenue, White Bear Lake, MN 55110

SUNRISE PARK / 651-653-2700
2399 Cedar Avenue, White Bear Lake, MN 55110

High School Campuses

WBLAHS - NORTH CAMPUS / 651-653-2920
(Grades 9-10)
5045 Division Ave, White Bear Lake, MN 55110

WBLAHS - SOUTH CAMPUS / 651-773-6200
(Grades 11-12)
3551 McKnight Road, White Bear Lake, MN 55110

WBL AREA LEARNING CENTER / 651-773-6400
2449 Orchard Lane, White Bear Lake, MN 55110

Other Sites

DISTRICT CENTER OFFICES / 651-407-7500
4855 Bloom Avenue, White Bear Lake, MN 55110

EARLY CHILDHOOD PROGRAM / 651-653-3100

- Normandy Park Education Center
2482 East Cty Rd F, White Bear Lake
- Tamarack Nature Center
5287 Otter Lake Rd, White Bear Township
- Hugo Elementary
14895 Francesca Ave, Hugo

WHITE BEAR AREA SENIOR PROGRAM / 651-653-3121
2482 East County Rd F, White Bear Lake, MN 55110

TRANSITION PLUS PROGRAM / 651-773-6051
13497 Fenway Blvd Circle N, Hugo MN 55038

