

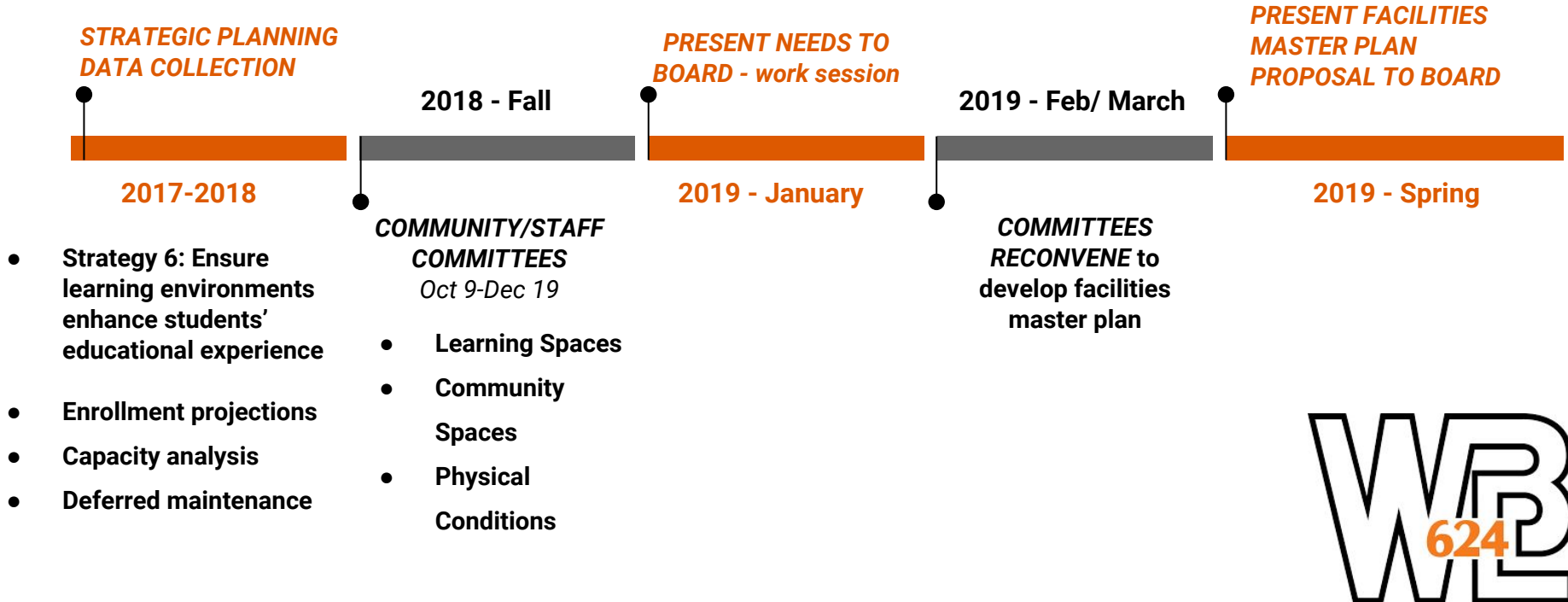


White Bear Lake  
Area Schools

# District Facility Planning School Board Work Session

*October 22, 2018*

# Comprehensive Facilities Process - Timeline



# Comprehensive Facilities Process - Oct 9

## Meeting #1 Agenda

- Facility Planning Committee Charge Statement and Operations
- District Strategic Plan
- Facilities Information
- Enrollment Projections
- Capacity vs. Enrollment
- Review of Upcoming Meetings and Subcommittee Progress



The map displays the White Bear Lake area in Minnesota, with a focus on school districts and land use. A red outline delineates the White Bear Lake School District, which includes several sub-districts: HUGO & ONEKA, LINCOLN, BIRCH LAKE, VADNAIS HEIGHTS, WILLOW LANE, and LAKEAIRES. Other nearby districts include Centennial, Forest Lake, Stillwater, Mahtomedi, Mounds View, and Roseville. The map also shows various lakes, including White Bear Lake, Lake Minnetonka, and several smaller lakes like Lino Lakes and Centennial Lake. Major roads such as I-94, I-494, and US-49 are clearly marked. The legend indicates that green areas represent 'Developable Agricultural Land'. The map is titled 'White Bear Lake School District' and includes a scale bar and a north arrow.

**Active & Planned Single Family Homes Total Available Units**

**Total Units**

- 1 - 10
- 11 - 25
- 26 - 50
- 51 - 100
- > 100

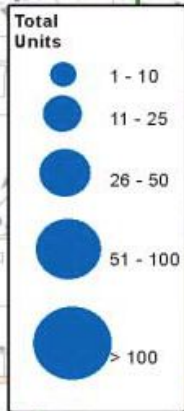
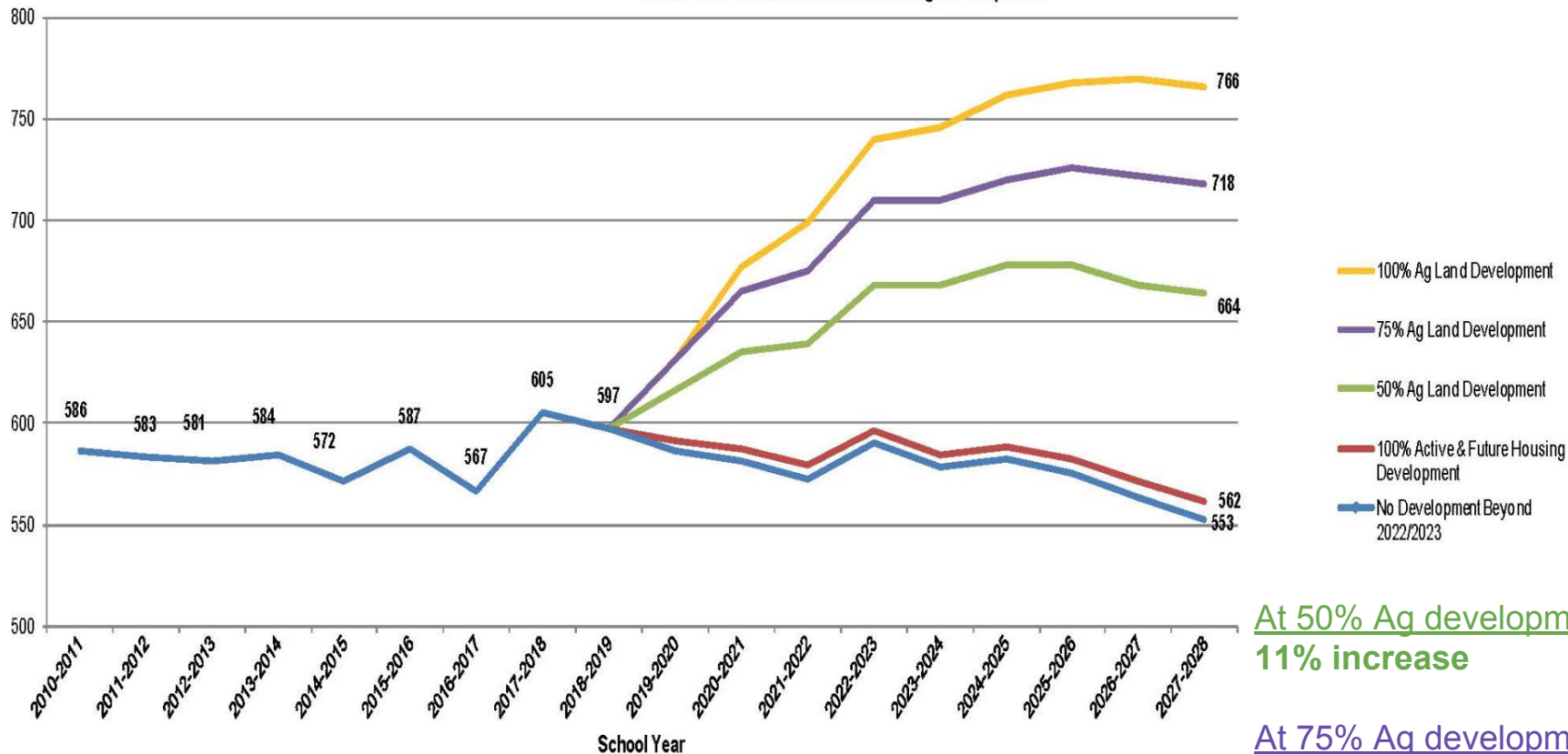




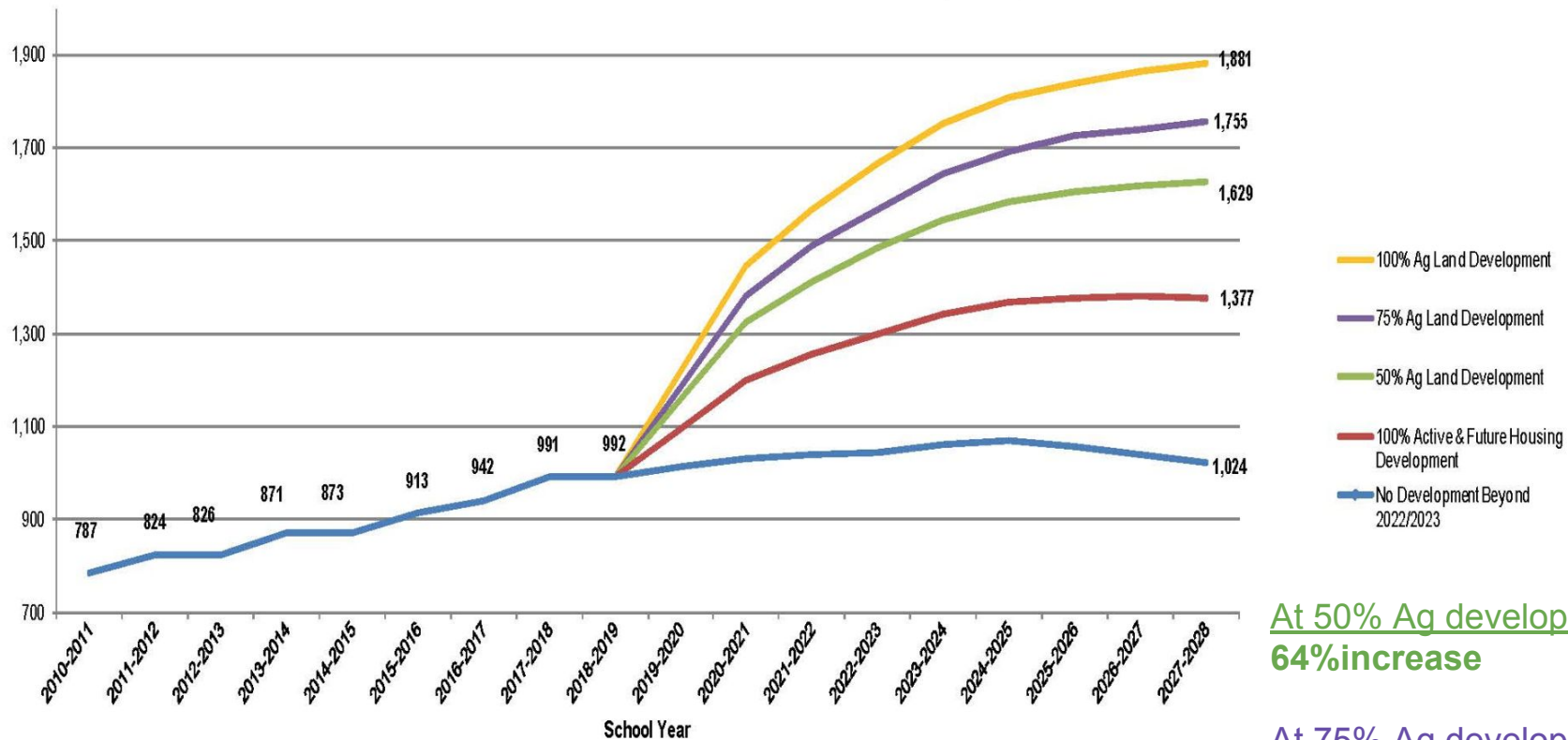
Chart 3: Otter Lake Elementary (K-5) Student Enrollment Modeling  
 Based on Various Levels of Housing Development



At 50% Ag development:  
**11% increase**

At 75% Ag development:  
**20% increase**

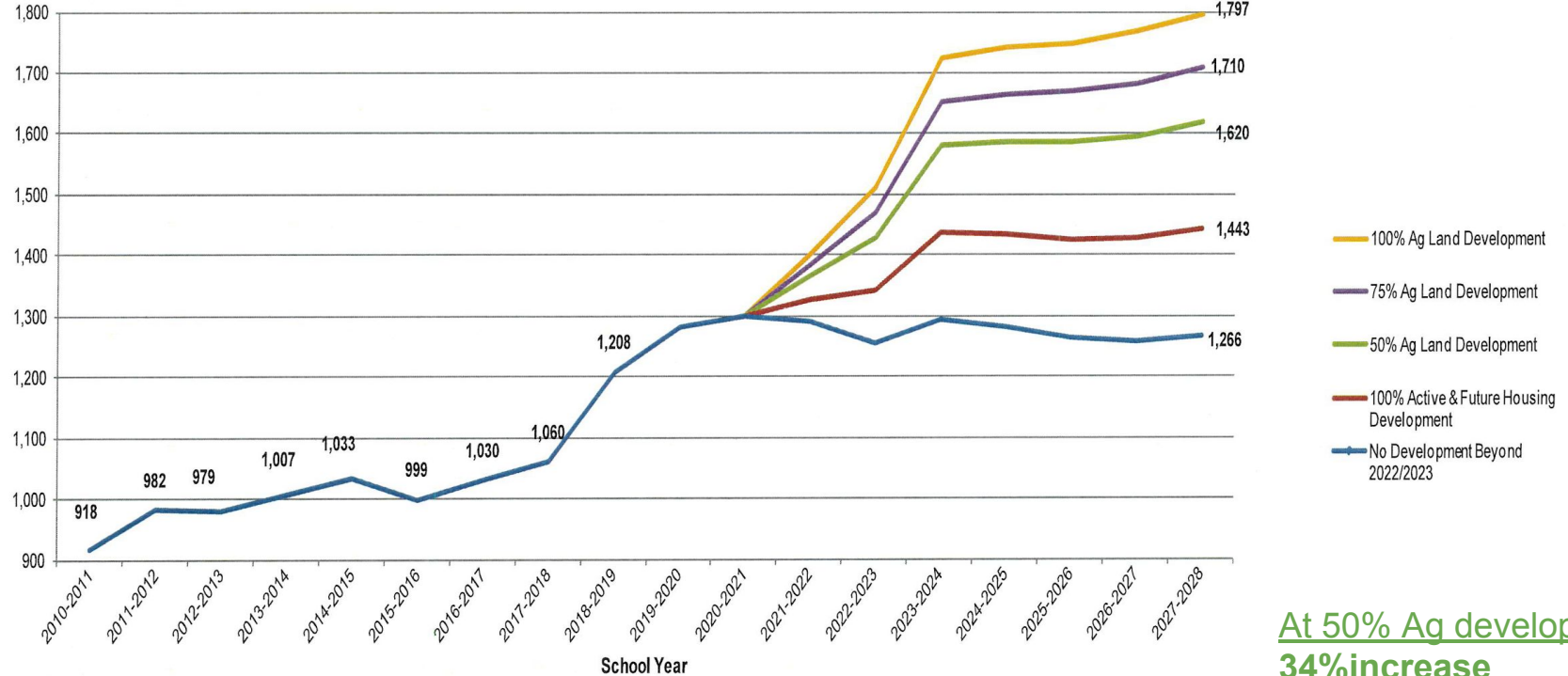
Chart 2: Hugo & Oneka Elementary (K-5) Student Enrollment Modeling  
Based on Various Levels of Housing Development



At 50% Ag development:  
**64% increase**

At 75% Ag development:  
**77% increase**

Chart 4: Central Middle School (6-8) Student Enrollment Modeling  
 Based on Various Levels of Housing Development

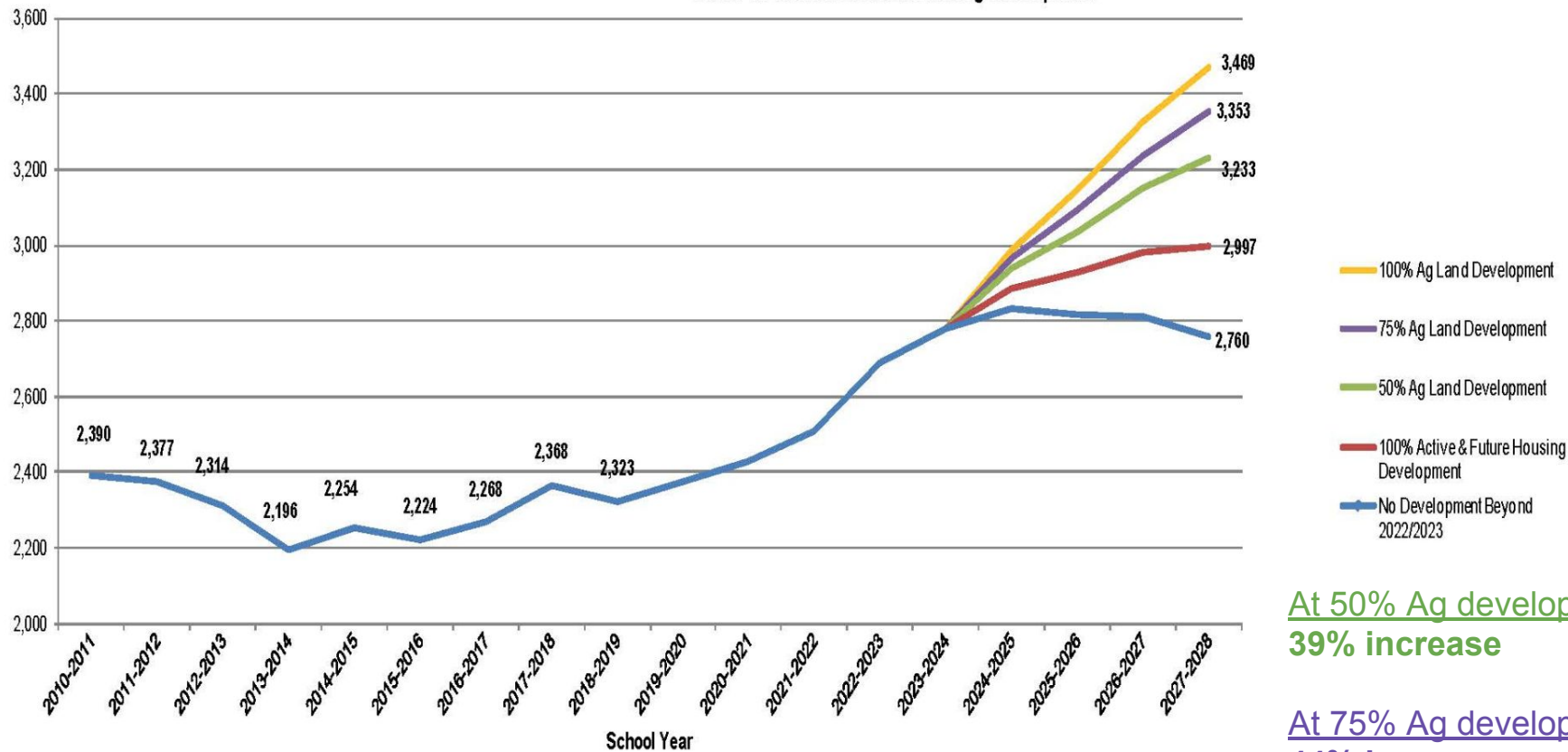


At 50% Ag development:  
**34% increase**

At 75% Ag development:  
**42% increase**



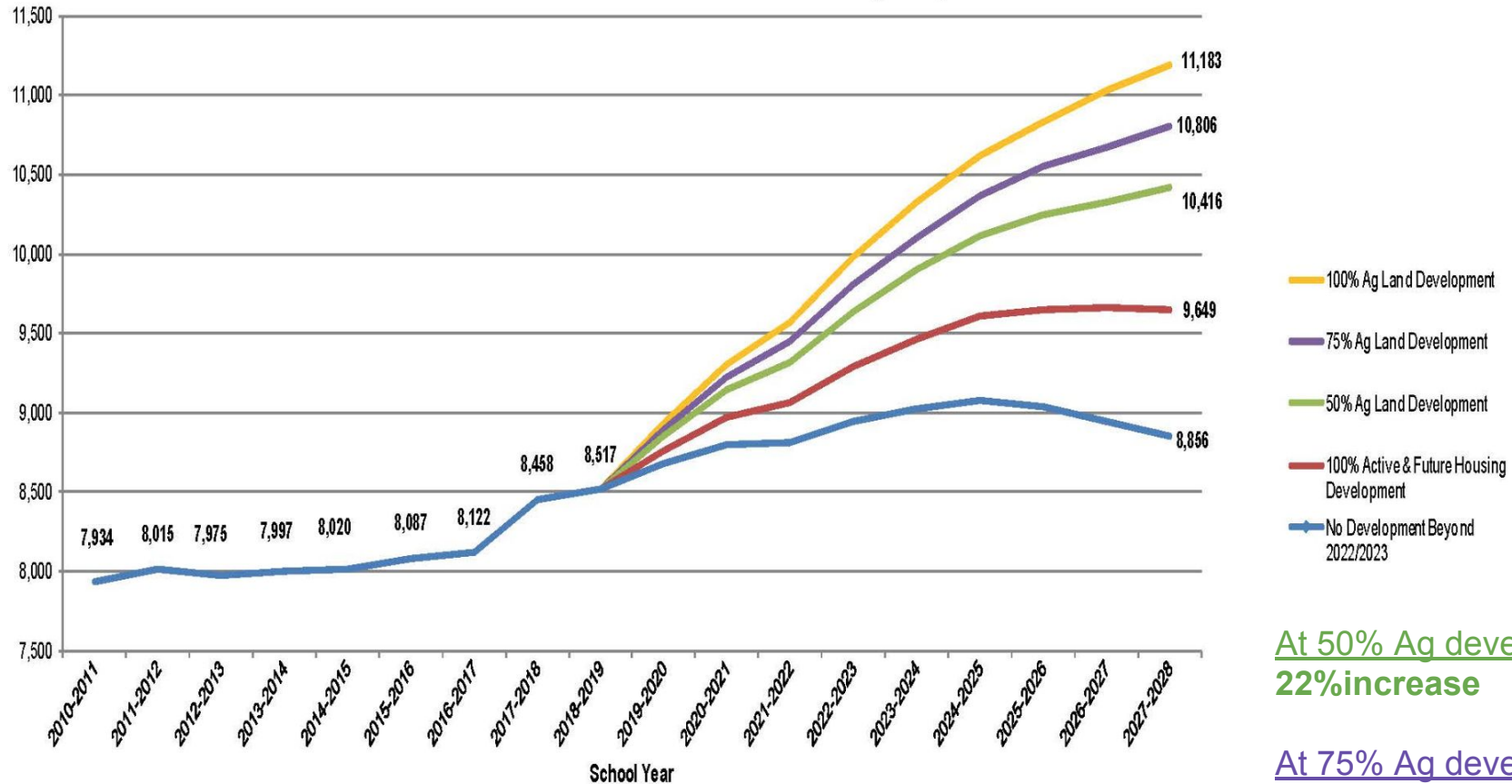
Chart 5: WBL North & South High School (9-12) Student Enrollment Modeling  
 Based on Various Levels of Housing Development



At 50% Ag development:  
**39% increase**

At 75% Ag development:  
**44% increase**

Chart 1: White Bear Lake K-12 Student Enrollment Modeling  
 Based on Various Levels of Housing Development



At 50% Ag development:  
**22% increase**

At 75% Ag development:  
**27% increase**

# Facilities Information Timeline

October 9

- Committee Charge Statement and Operations
- District Strategic Plan
- Facilities Information
- Enrollment Projections
- Capacity vs. Enrollment
- Review of Upcoming Meetings and Subcommittee Progress

October 23

- Educational Alignment
- Activities, Athletics, Fine Arts
- Safety and Security
- Facility (Maintenance) Analysis

Nov 7 - Dec 20

3 Committees will advance the work

- Learning Spaces
- Community Spaces
- Physical Conditions

