

hollis architects®
miller

we design the future®

Programming Meeting 01

2019.05.06



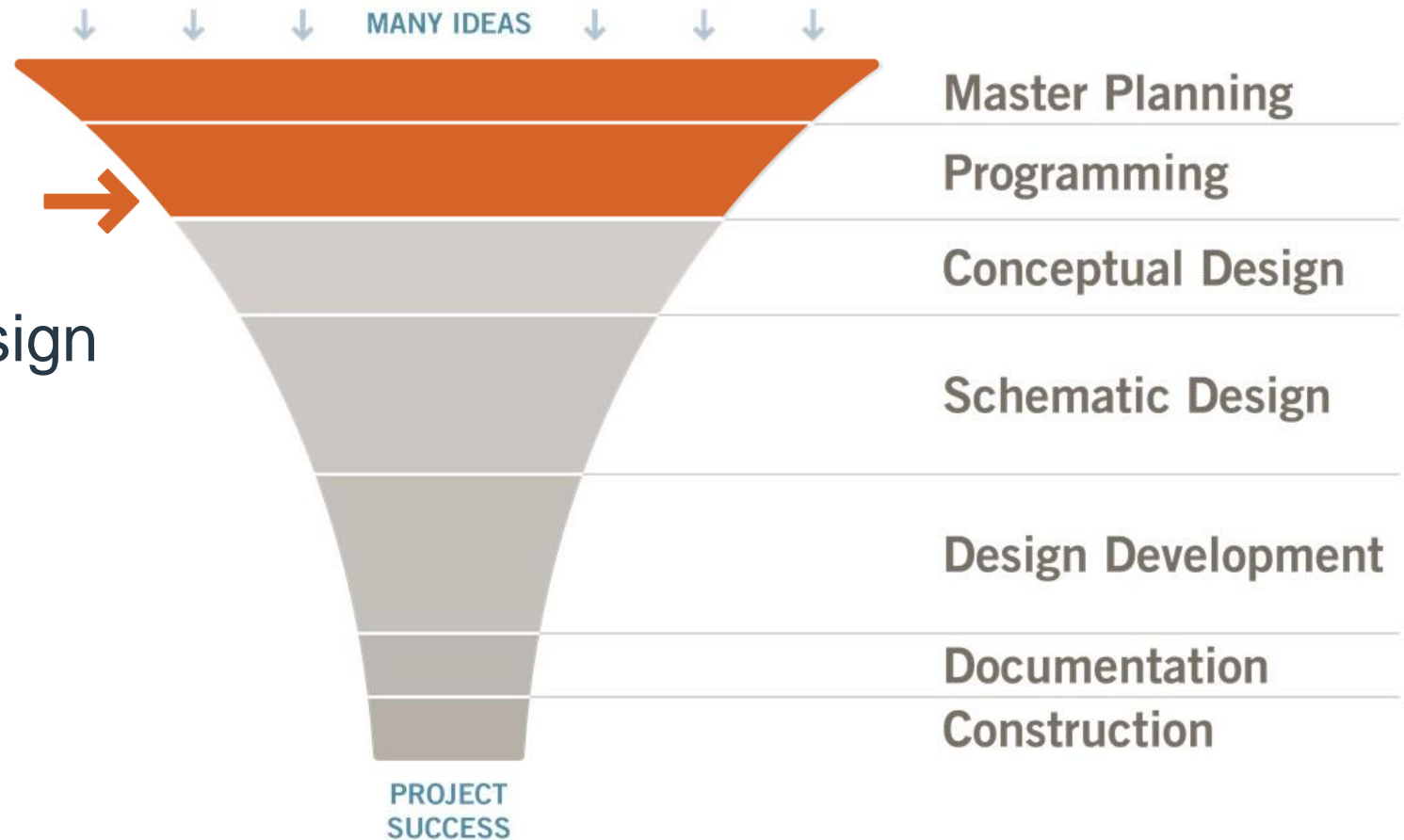
Programming 01

- Character statements
- Visual programming
- Looking forward



Our process

Programming + conceptual design
“Creating the Road Map”



Community / Culture



Maintain a caring environment through community connectedness and celebration of diversity.



Create a safe and secure space that supports different levels of emotional and developmental needs. A place where every student feels welcome.

Achievement



Find opportunities to help our students explore their passions on their journey to success.



Create a place for integrated research based programs. STEAM learning, and partnership programs (Parents as teachers, math relays, etc.).

**Because
we care,
together
we achieve**

Equity



Consider the individual's needs, while fostering healthy and supportive growth. Accessible to everyone.



Create flexible learning environments which encourage collaborative teaching and flexible classroom space built around individualized learning opportunities.

Resources



Foster longevity and growth (of our people and talents) through utilizing our resources.



Create an environment where staff and students feel ownership over their learning experience.

VISION STATEMENT:

To build on community, achievement, resources, and equity that ensures a place of achievement.

Character Statement



Community / Culture



Maintain a caring environment through community connectedness and celebration of diversity.



Create a safe and secure space that supports different levels of emotional and developmental needs. A place where every student feels welcome.



Equity



Consider the individual's needs, while fostering healthy and supportive growth. Accessible to everyone.



Create flexible learning environments which encourage collaborative teaching and flexible classroom space built around individualized learning opportunities.



Achievement



Find opportunities to help our students explore their passions on their journey to success.



Create a place for integrated research based programs. STEAM learning, and partnership programs (Parents as teachers, math relays, etc.).



Resources



Foster longevity and growth (of our people and talents) through utilizing our resources.



Create an environment where staff and students feel ownership over their learning experience.



Learning Actions

Great design is not simply how a thing looks, but also how it functions



Great design is not simply how a thing looks, but also how it functions.

This exercise gathers actions the Visioning Team anticipates occurring within the new project. These actions are returned the next meeting in a light bulb word jumble representing our shared vision of the project's function and future success.

What would it look like
if we really meant it?





Reimagining the Classroom





Envisioning Collaboration





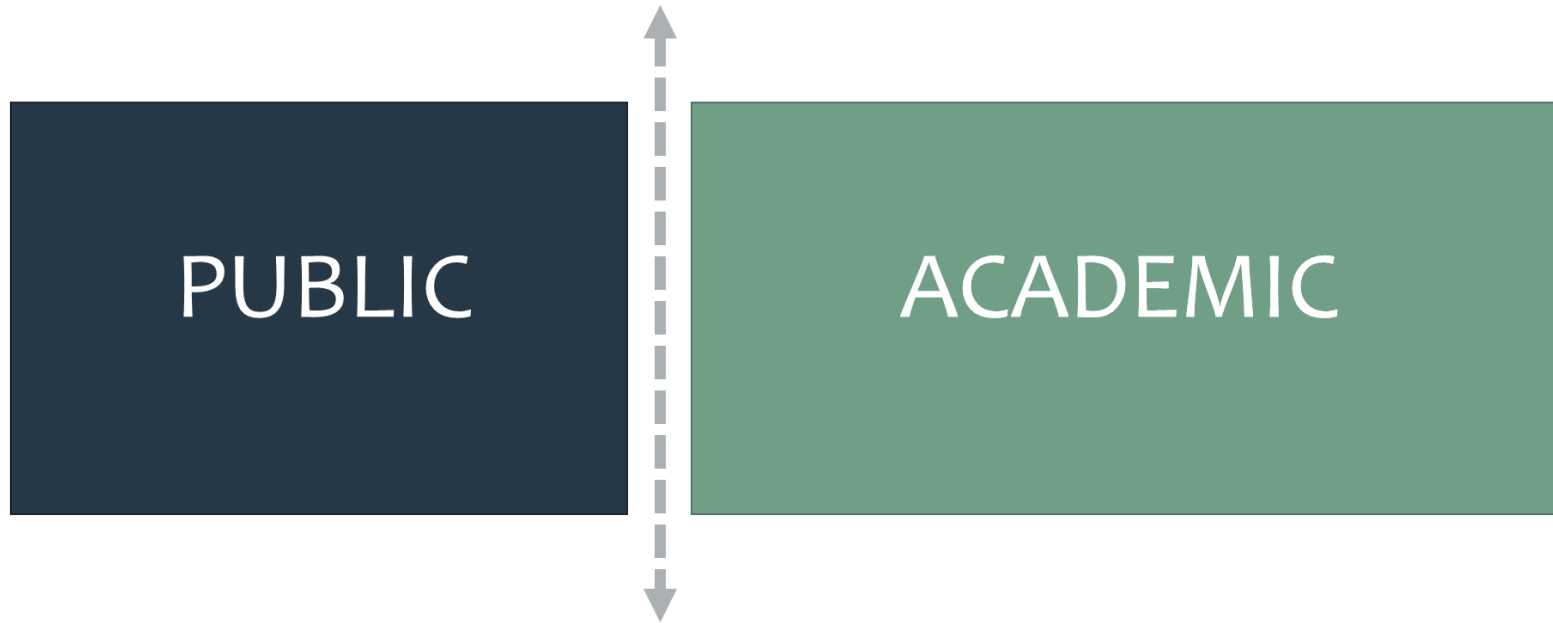
Envisioning Collaboration





Media Center

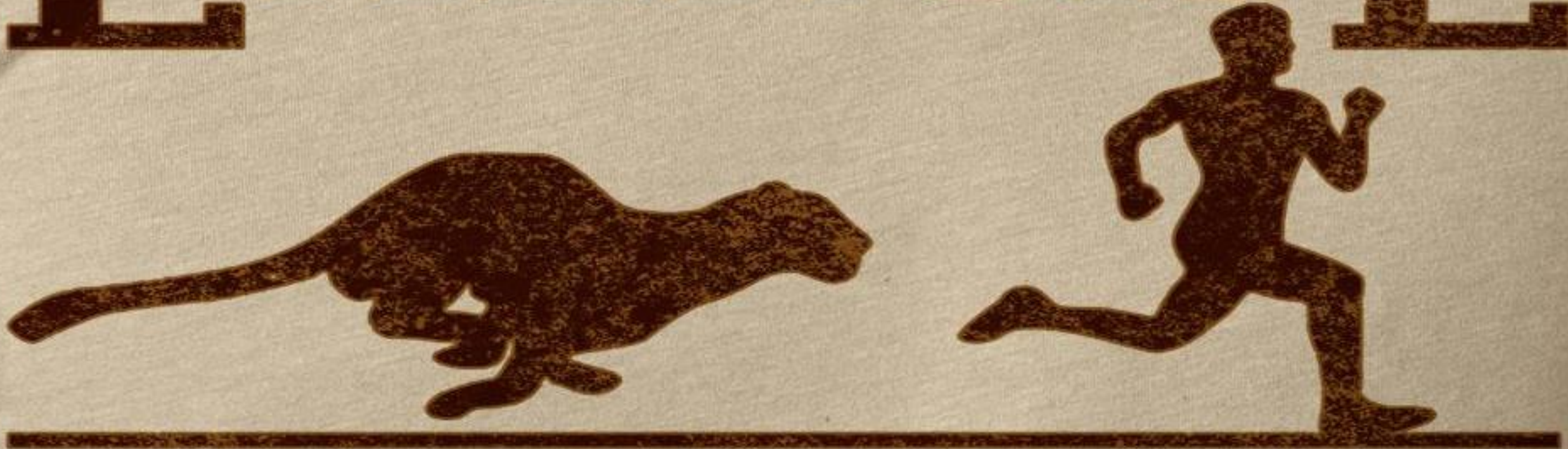




Visual Program



EXERCISE



***Some Motivation Required.**

Time for some exercise Visioning



What happens in a classroom?

Describe a typical class period



In-classroom storage



Shared / adjacent storage

How will teaching materials be stored?





Designated teacher's zone

Mobile or condensed

How will teachers facilitate the class?





In classroom



Out of classroom

Tell us about student storage goals





Fixed



Mobile

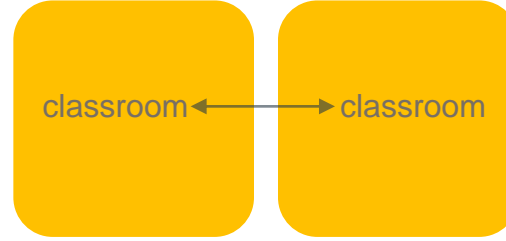
How should technology be integrated?





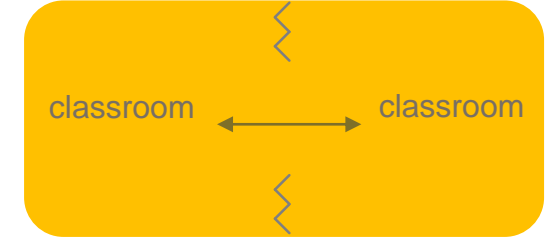
no operable partitions, no
window between classrooms

Standalone



no operable partitions,
window between classrooms

Visual connectivity



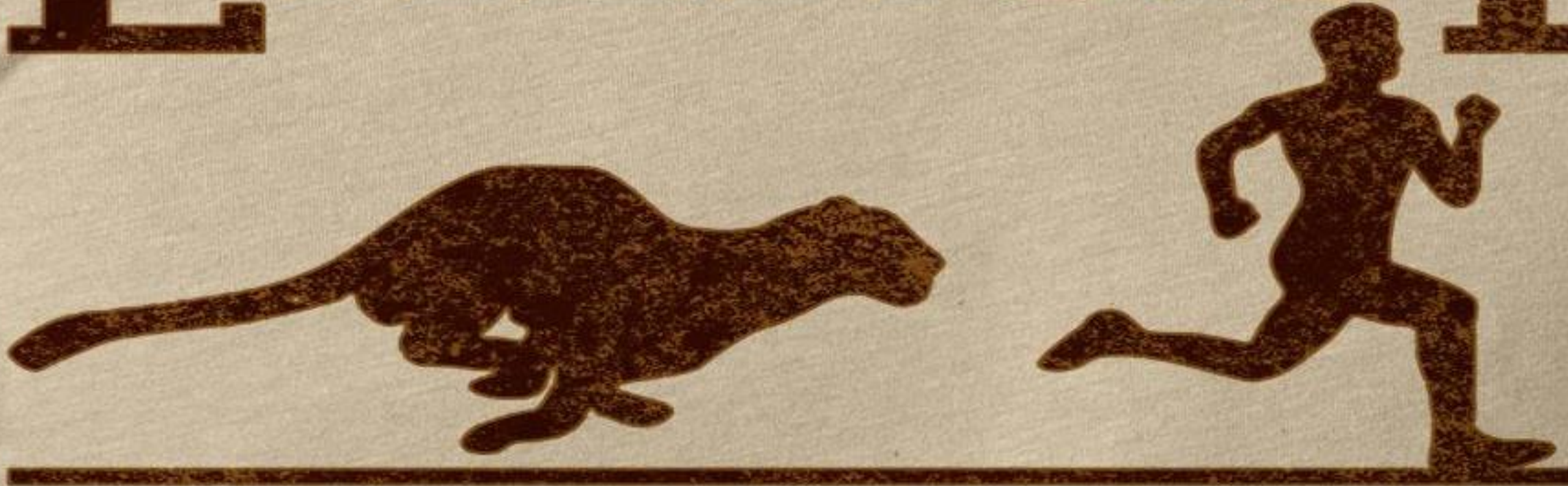
allows for team teaching,
operable partitions

Physical connectivity

How should classrooms relate to one another?



EXERCISE



***Some Motivation Required.**

Time for some exercise Visioning



How do you envision using collaboration spaces?

Describe the activities and group sizes

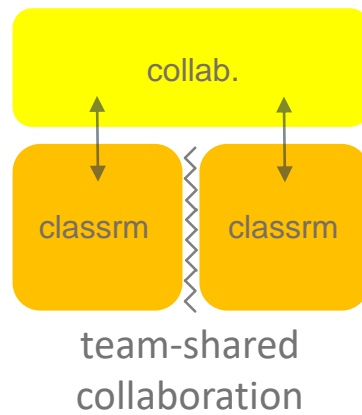


Physical connectivity



Visual connectivity

How should classrooms connect to collaboration spaces? +



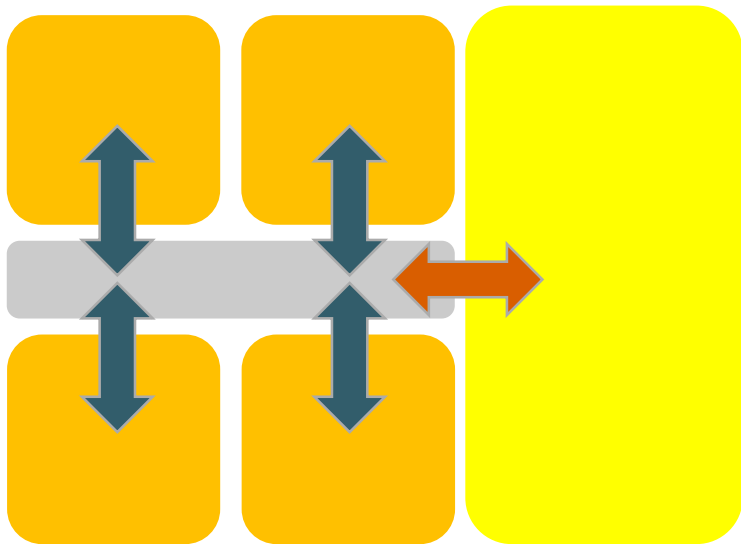
Direct access



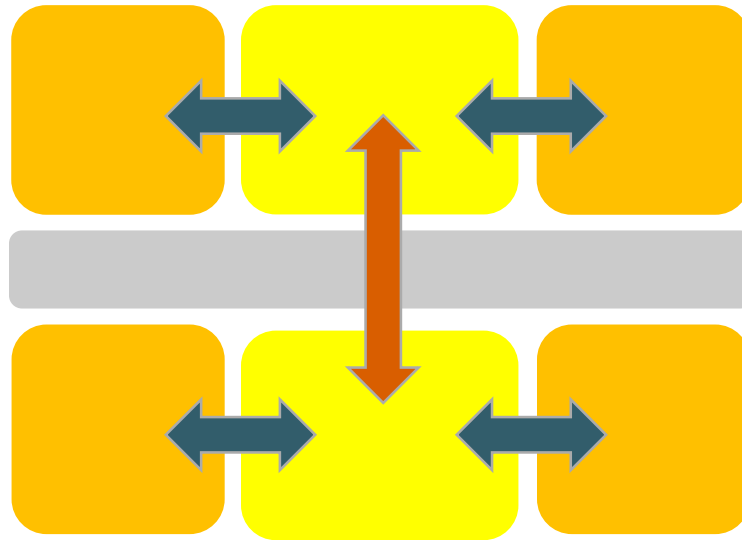
Nearby access

How should classrooms relate to collaboration spaces?

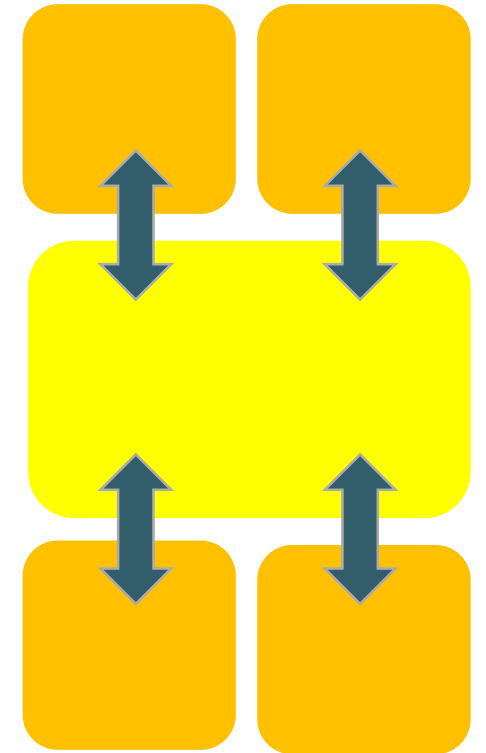




Destination
collaboration



Neighborhood
collaboration

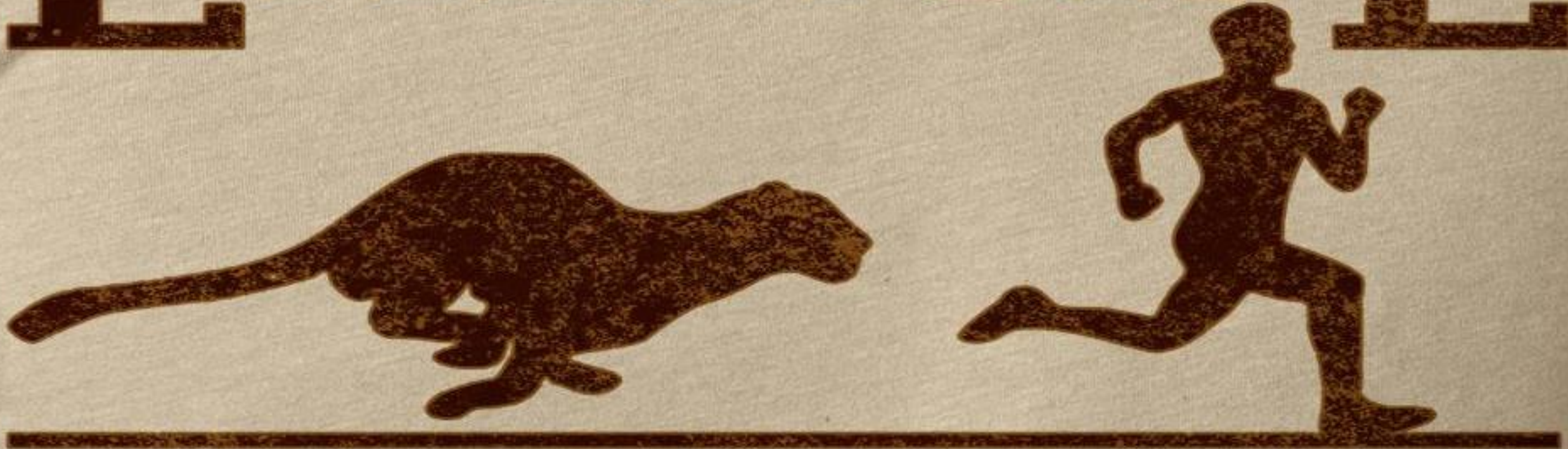


Centralized
collaboration

Team & School Community



EXERCISE



***Some Motivation Required.**

Time for some exercise Visioning



How do you envision using the media center?

Describe the activities and group sizes



Visual connectivity



Physical connectivity

How does the media center relate to other school functions?





Destination



Multiple

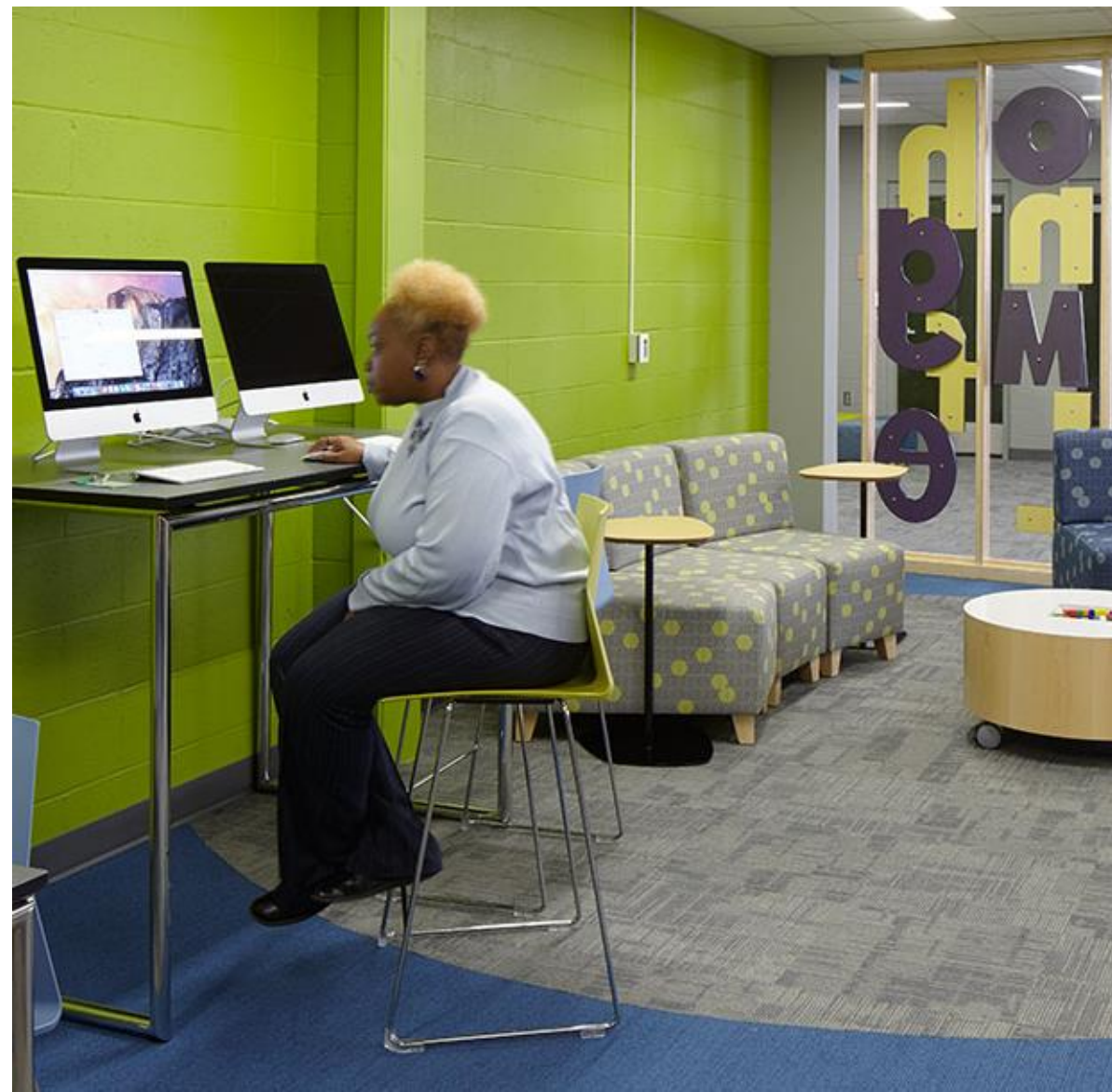
Media Center – destination or multiple locations?





What people/group sizes should be accommodated?



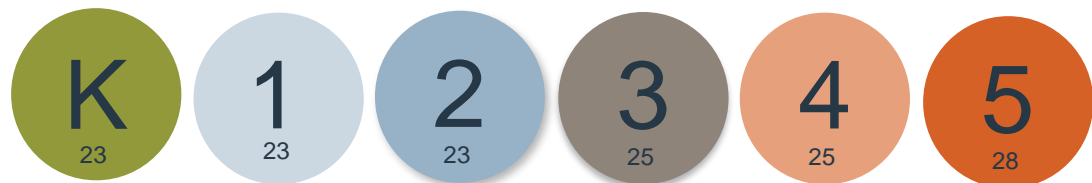
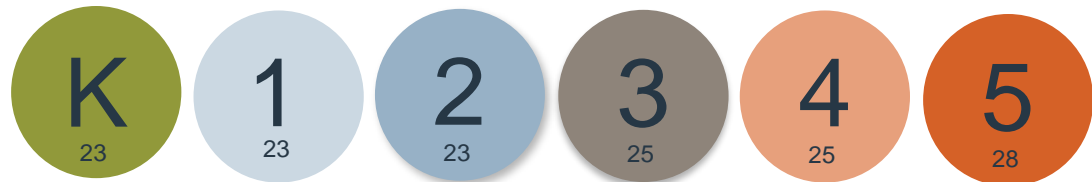
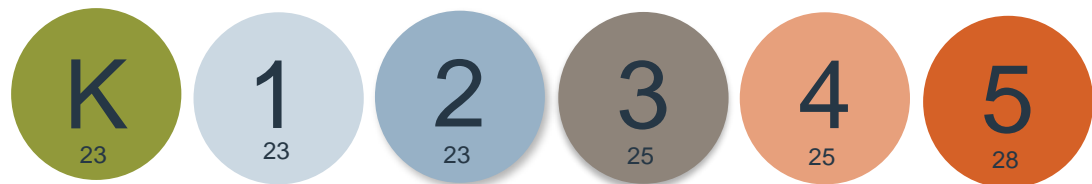


Is the media center available for community use?

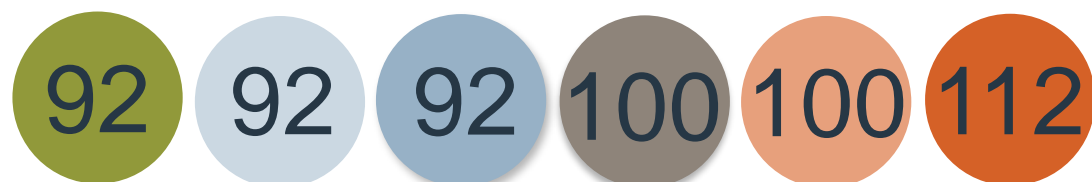
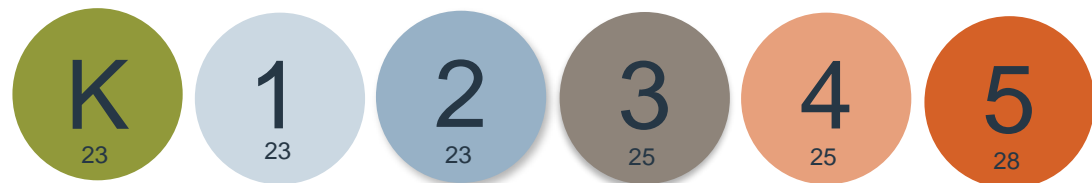


Program

**School Population
+ Academic Neighborhoods**



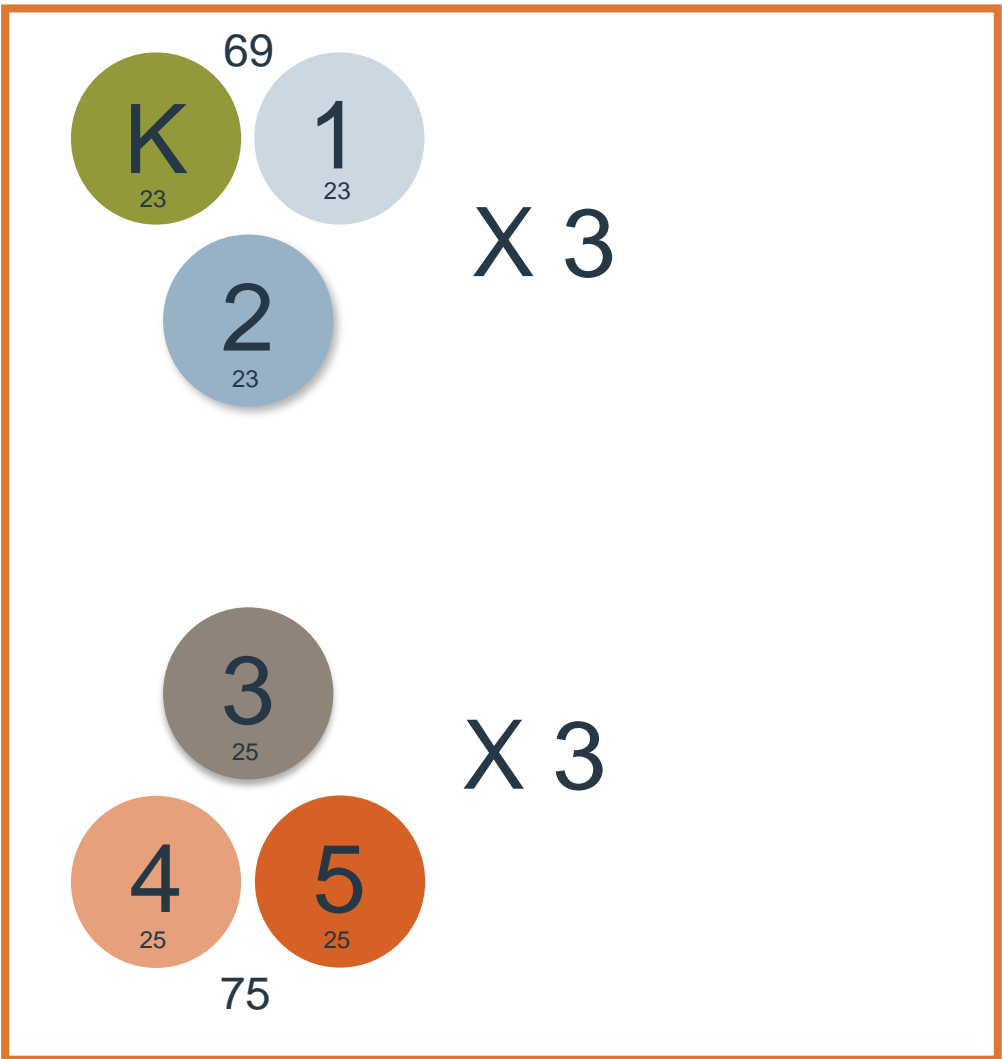
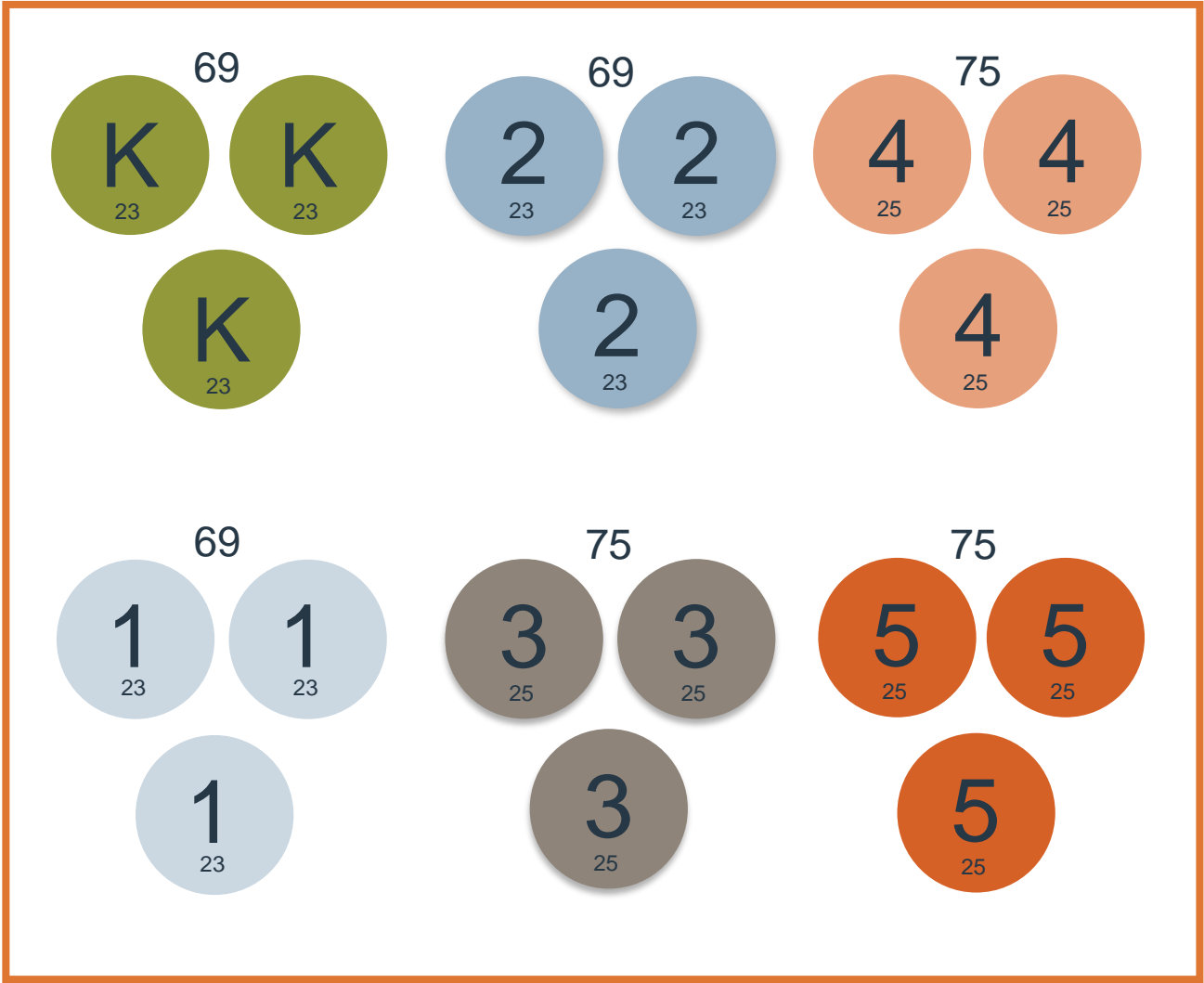
441



588



How do neighborhoods break down into classrooms w/ teachers?



Group Discussion

Tours

- Example schedule
- Tour opportunities:
 - Keep it local
 - Go regional



8:00 AM	depart Center
9:00 AM	arrive at Location 01
10:00 AM	depart Location 01 for Joplin
12:15 PM	arrive in Joplin for lunch
1:30 PM	<i>Depart lunch</i>
1:45 PM	arrive at Location 02
2:30 PM	depart Joplin for Location 02
5:15 PM	arrive at Location 03
6:00 PM	end of day



CONSTRUCTION COST
\$13,900,000

SIZE
60,000 SF

REFERENCE
Dr. Roger Barnes
Superintendent
660.646.4566
rbarnes@chillicotheschools.org

CHILLICOTHE ELEMENTARY SCHOOL

Chillicothe R-II School District | New Construction

The community's youngest learners thrive in their updated, interactive space.

Infants through first graders are excited to be in one, new building that encourages students to connect with the natural environment around them. Interior design and environmental graphics make this space come alive and encourage these little learners to imagine. It also helps these little learners to understand what a space's purpose is without traditional wayfinding signage that they wouldn't be able to read. The various learning environments include large instruction, small group and one-on-one.

The rural community of Chillicothe, Missouri, is committed to making big changes for their students. This new elementary school is just the first step in the District's plan to get all their elementary school students in one new building and all their students on one campus around their high school.



ERVIN EARLY LEARNING CENTER

DISTRICT: Hickman Mills School District

ADDRESS: 10530 Greenwood Rd.
Kansas City, MO 64134

GRADE LEVELS: Pre-K - Kindergarten

BUILDING TYPE: Renovation of existing middle school building

SQUARE FOOTAGE: 110,000 sf

NUMBER OF STUDENTS: 500 students

CONCEPTS/ GENERAL INFORMATION: Ervin ELC was created to house pre-k and kindergarten students from around the district in one main building. Opening up existing rooms and making larger, open spaces helped to promote collaborative brain based learning environments with a strong emphasis on literacy. Graphics, interior finishes, and furniture were used to help support the architectural elements in the space. A few unique features include small and large group breakout spaces including learning stairs, an indoor triclyce track, and ball pit.

NORTHVIEW ELEMENTARY

NORTH KANSAS CITY SCHOOL DISTRICT | NEW CONSTRUCTION

Northview Elementary was designed in tandem with Rising Hill Elementary to address a growing student population and overcrowding concerns. Hollis + Miller co-created with district staff, educators and students to create flexible and collaborative spaces that support elementary education with seamless integration of the district's SPED program. Specifically, teachers and principals asked for spaces that would support learners who progressed at different speeds. In addition, the concept of the traditional media center was challenged, and the solution includes those resources dissolved into a large, centralized collaboration and connection space. This encourages literacy to be a daily part of the student's experience, as opposed to behind closed doors in a destination space.

Energy conservation initiatives include designing the buildings to be net zero ready and LEED Certified. Particularly, design components perform at a 58% higher efficiency rating than the standard code. When construction is finished the District has the option of implementing minimal solutions to provide a complete net-zero building. Additionally, the design includes space for a solar grid installation in the future.

CONSTRUCTION COST

\$21,769,598

SIZE

70,907 SF

REFERENCE

Jeff Vandel
Executive Director of Facilities
816.321.5000
jeff.vandel@nkcschools.org



**BRIARWOOD NEW
ELEMENTARY SCHOOL**

Shawnee Mission School District

PROJECT DESCRIPTION

Shawnee Mission School District came to Hollis + Miller, its architect of record, in 2015 to get assistance with designing a new school and tear down the existing facility. As a part of the effort, we designed a new gym. The school was designed to accommodate 550 students grades PreK-6. The students were relocated to another facility during construction and moved into the new Briarwood in December of 2016.

PROJECT INFORMATION

Project Size: 72,000 sq. ft.
Project Cost: \$16,681,978
Date of Completion: December 2016
Grades: Pre-K through 5th



TRAILWOOD NEW ELEMENTARY SCHOOL

Shawnee Mission School District

PROJECT DESCRIPTION

Shawnee Mission School District came to Hollis + Miller, its architect of record, in 2015 to design a new school while the existing facility remained in operation on the same site. The school was designed to accommodate 550 students grades PreK-5. During construction, safety and security were paramount, not only for the construction workers but also for the students just a few feet from construction activities. Careful coordination between the District, Contractor and Architect allowed all daily operations to be maintained, along with after hour events during the school calendar year. Trailwood opened in December of 2016, transferring students from the existing building into their new learning environment.

PROJECT INFORMATION

Project Size: 68,000 sq. ft.
Date of Completion: December 2016
Grades: Pre-K through 5th

Q+A

Did we miss anything?

Thanks!

What activities will take place in the art room?

Describe the media types and equipment



What type of art classes are offered?





Dedicated space beyond
classroom for finished
projects?



Display doubles as
storage for in-progress
projects?



In-progress project storage
with visual access?

What type of student display is desired?

