

**SCHOOL
CENTER
DISTRICT**

hollis architects®
millers

we design the future®

Leadership Meeting 01

2019.04.29



Leadership Meeting 01

introductions

process | goals | schedule

looking forward

site analysis





John Brown
Lead Partner



Justin Durham
Client Leader



Karen Oppliger
Project Architect



Jenny Lake
Senior Interior



Kelsey Angle
Architect



Cassiday Love
Architect



Spenser Albertson
Environmental
Graphics



Amber Lutes
Specifications



Michelle Iwig-Harmon
Structural
Engineer



Brian Hochstein
Project Manager/
Landscape
Architect



Brian Hill
Civil Engineer



Doug Everhart
MEP Principal



Adam Mackenzie
Project
Manager/Electrical
Engineer



Jay Patterson
Mechanical
Engineer



Clayton Thompson
Plumbing Engineer



introductions







CENTE
DREAM BIG



what are your dreams for this project? visioning



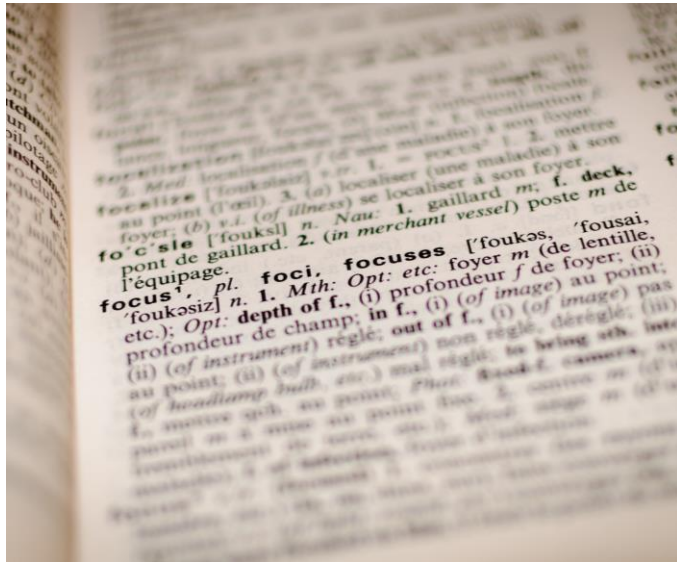


what will make this project a success? visioning



process

our process



first in words



next in drawings

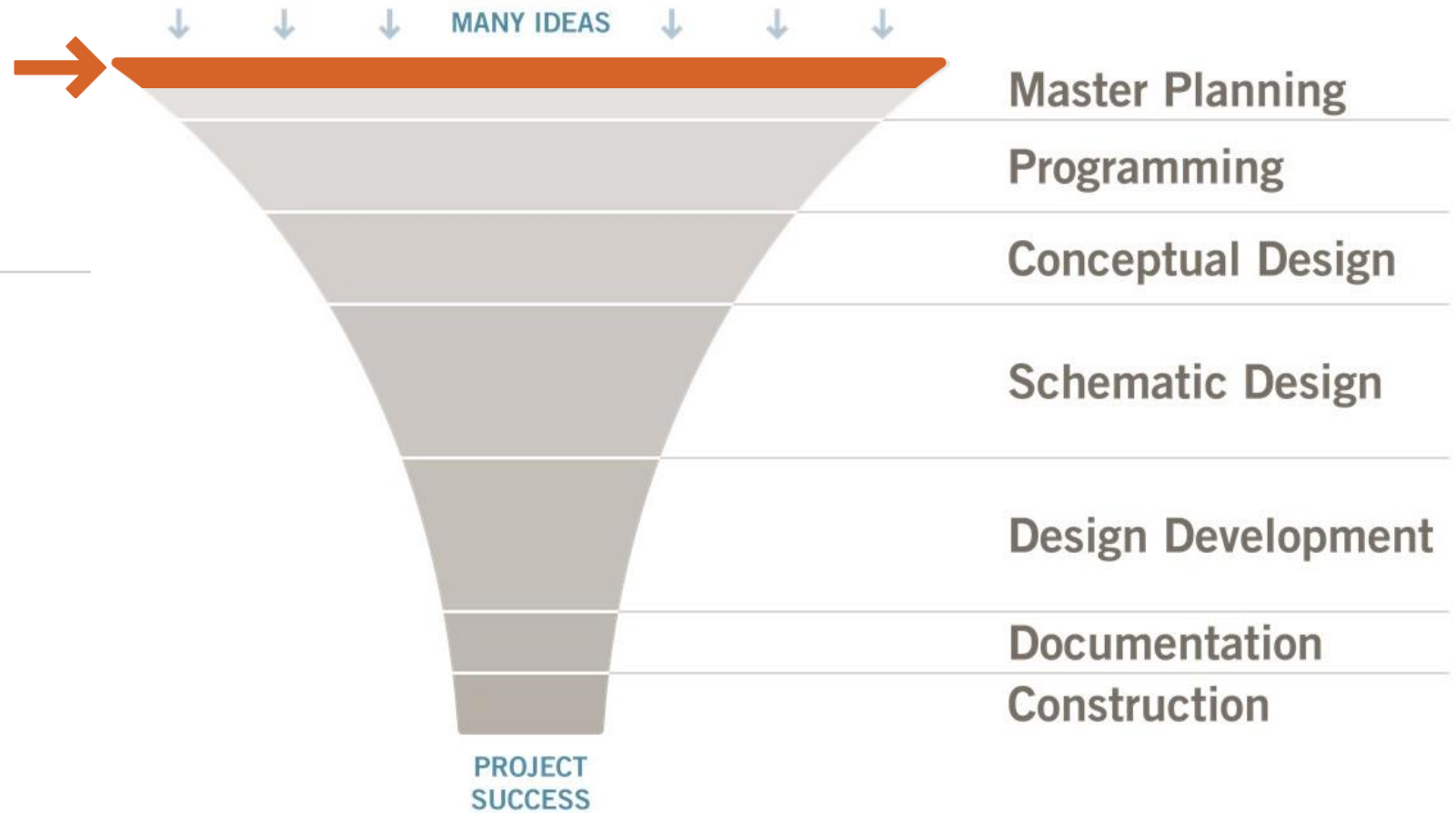


last in bricks



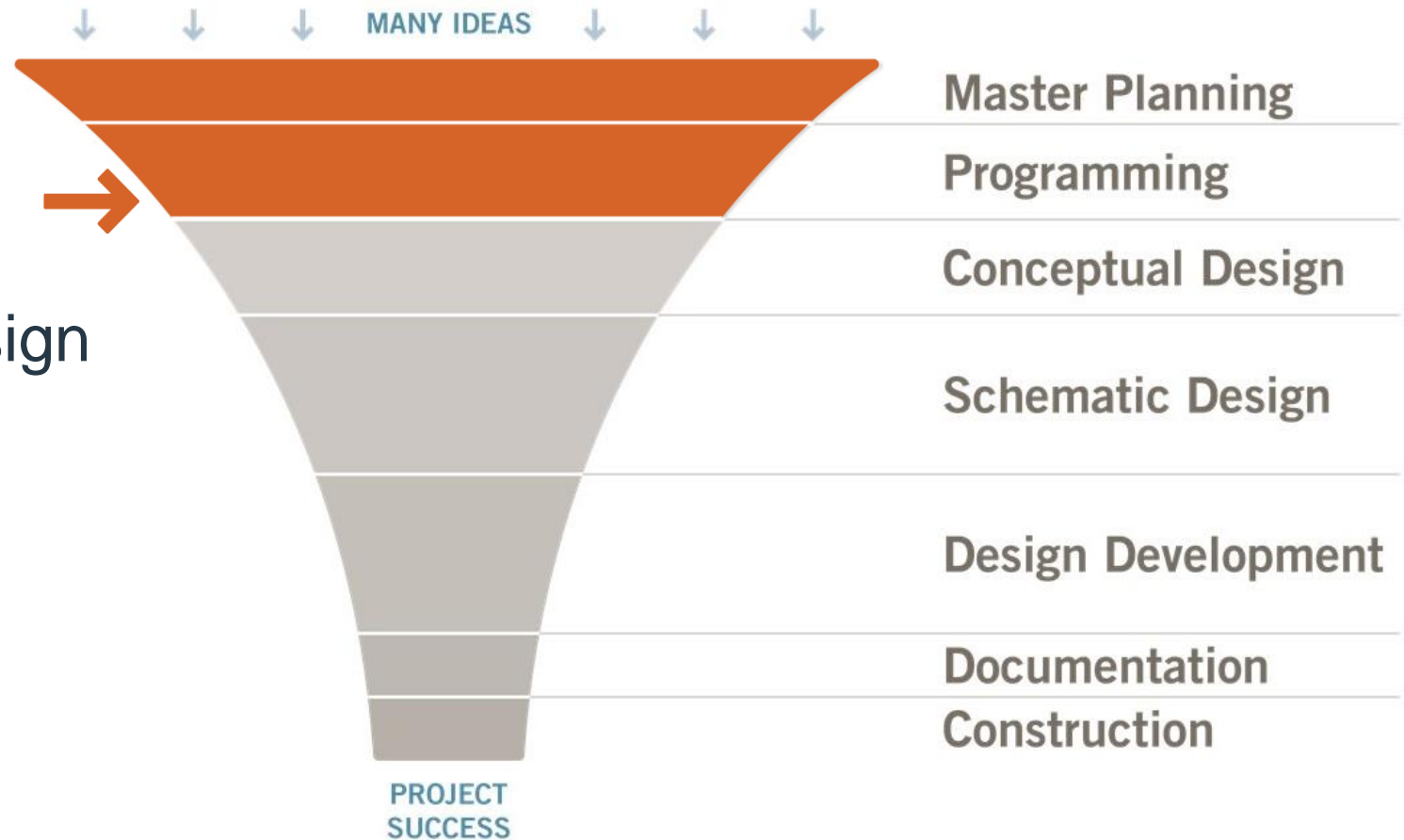
our process

general to specific



our process

programming + conceptual design
“creating the road map”



programming

typical program

New Middle School No. 6

April 17, 2013

GOAL: NEW MIDDLE SCHOOL

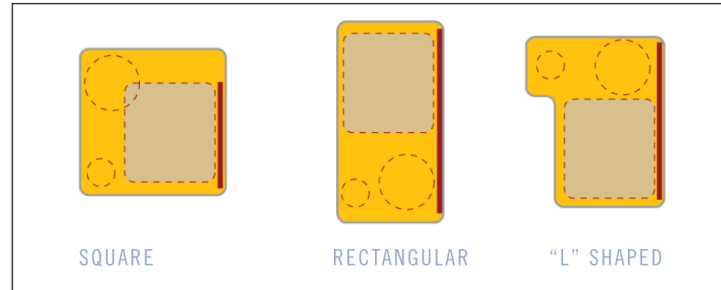
Grades 6th, 7th & 8th 900 Students
School to open August of 2015

1.0 - Middle School Program	Notes	Square Footage Program	Actual Floor Plan	Square Footage Program Phase 2
1.0-Administration/Counseling	remote depends on design	4,539	0	0
Secure Entry		150		
Reception / waiting	all admin areas	350	0	0
Principal		190	0	0
Assistant Principal		156	0	0
Assistant Principal		156	0	0
Storage		80	0	0
Waiting area for students	by each principal - 3 spaces	36		
SRO		156	0	0
In School Suspension		600		
Health Center / Toilet		280	0	0
Copy / Mail		0	0	0
Records	adjacent to Registrar (could be one or two rms)	80	0	0
Conference	near front of Admin 15 people	320	0	0
Conference	adjacent to princ office	175		
Counseling Reception / waiting/registrar		140	0	0
Counseling (3)		390	0	0
Staff Workroom / Lounge	put mail slots in lounge/workroom (1st Fl)	600	0	0
Office - General/Itinerant Offices	3, 1 in a office	160	0	0
Admin/Teacher Restrooms(2 @ 60)		120	0	0
Teacher Lounge near Houses	2nd Floor	400	0	0
2.0-Academic Houses		39,230	0	2,400
Classrooms (24 @ 850 SF)	Math, English, Civic includes Spanish/Reading	20,400	0	
Science (6 @ 1200 SF)		7,200	0	
Science Prep (6 @ 195 SF)		1,170	0	
Restrooms (6 @ 180 SF)		2,160	0	
Team storage 6 @ 80		480	0	
Staff restroom 6 @ 50		300	0	
Task room 6 @ 400		0	0	2,400 SPED in Phase 2
Technology Closets (4 @ 80)		320		
Living / learning rooms (6 @ 1200)		7,200	0	0
Student Lockers (6 @ 300)		0	0	0
Laptop Cart "Docking" Space (6@60)		0	0	0
3.0-Elective Programs		7,250	0	1,000
Computer (1 @ 900 SF)	In Media Center	900	0	0
Yearbook/multimedia/news rm/comp lab		0	0	1,000
Family & Consumer Science		2,000	0	0
FACS Storage		180	0	0
Vocational Technology (Gateway to tech)	clean/dirty lab	1,800	0	0
VO Tech Storage		200	0	0
VO Tech Office		120	0	0
Tech Lit/Keyboarding		1,200	0	0
Enrichment		850	0	0
4.0-Special Programs		9,820	0	0
BD Room		800	0	0
Severe/Profound		2,000	0	0
SPED classes (6 @ 800 SF)	6 focus rooms @ 800 (in houses)	4,800	0	0 become classrooms in PH 2
Offices		150	0	0
SPED toilet		160	0	0
Conference room		450	0	0
TA locker area		40	0	0
Kitchen area		400	0	0
Storage (3 @ 100)		300	0	0
PT office		160	0	0
PT Room		400	0	0
Speech Path office		160	0	0
5.0-Media Center		5,110	0	0
Media Center		3,500	0	0
Professional Development	need to accommodate 75-100 people			
Computer Lab	31 stations	900		
Office		150	0	0
Workroom		250	0	0
Technology Storage		250	0	0
Restroom		60	0	0
6.0-Auditorium		2,100	0	0
Auditorium	auditorium as flexible café space	0	0	0
Stage		1,600	0	0
Dressing (2 @ 90 SF)	dressing in Music /close to drama room	180	0	0
Sound	control room combined sound / video	80	0	0
Storage	riser storage	240	0	0
7.0-Arts Programs		9,925	0	2,500

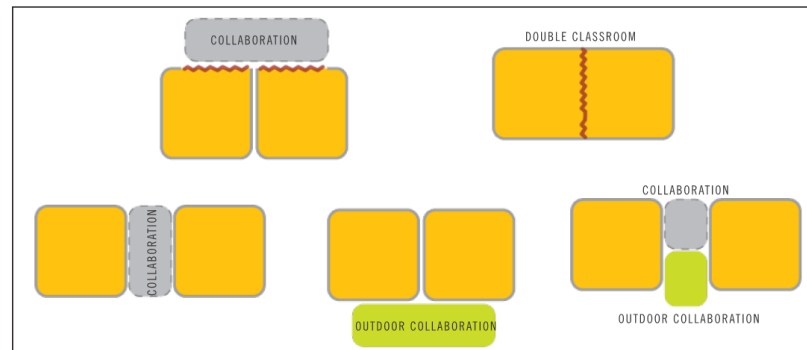




CLASSROOM PROPORTIONS



CLASSROOM PAIRING



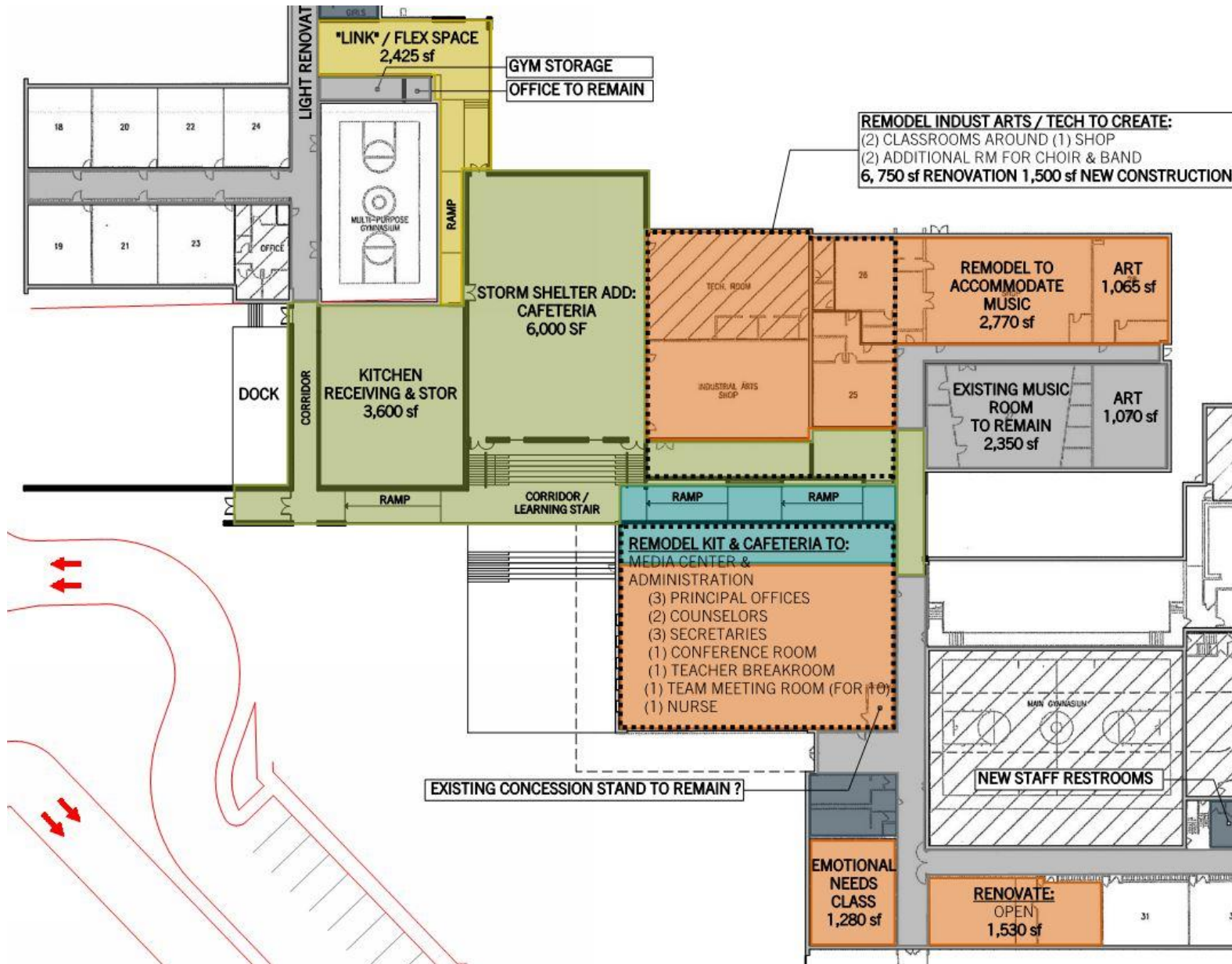
programming tools visual programming

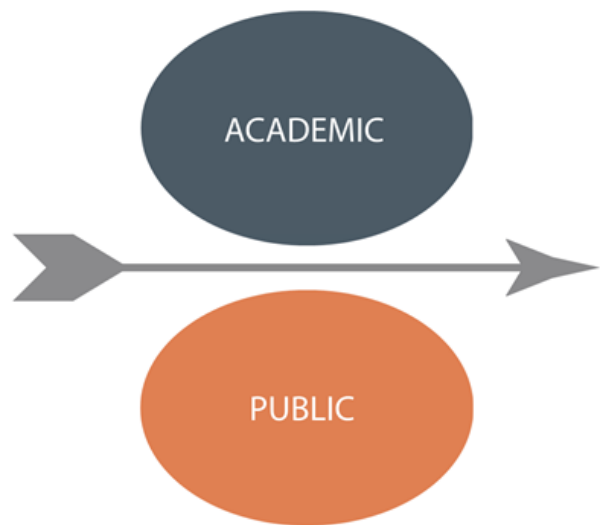


let's draw a light bulb

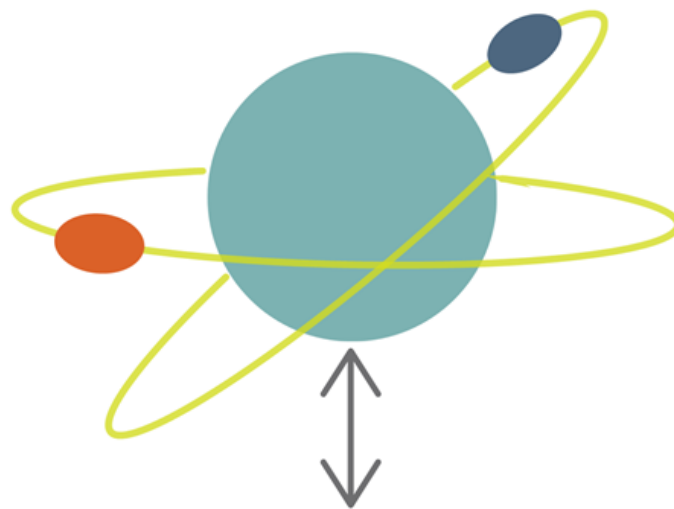
- no rules
- no right and wrong
- draw a light bulb



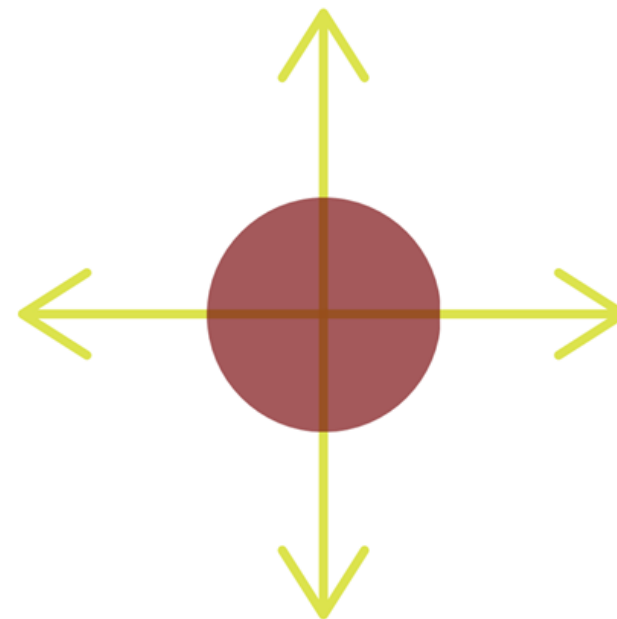




Mainstreet



The Cosmos

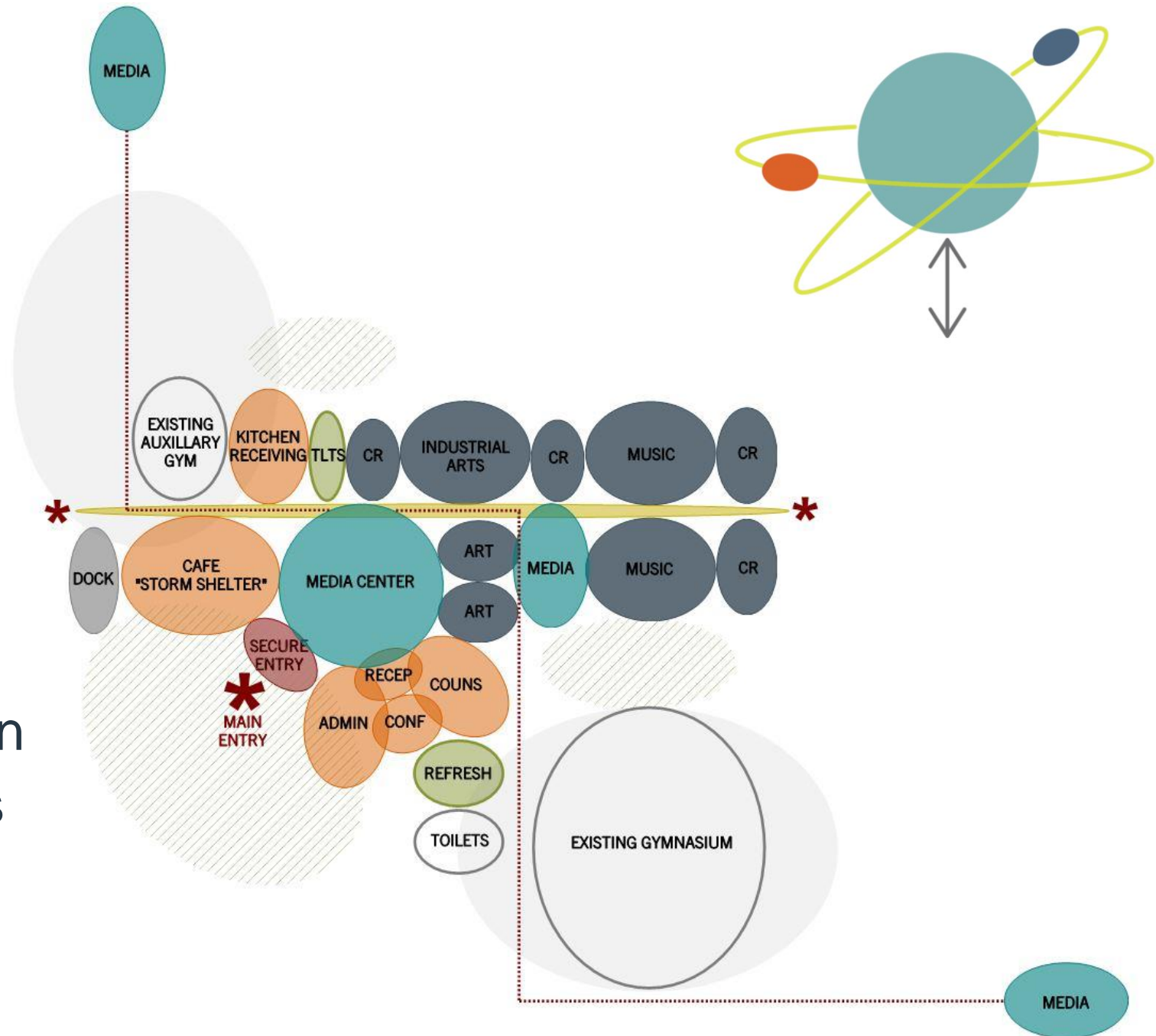


The Crossroads



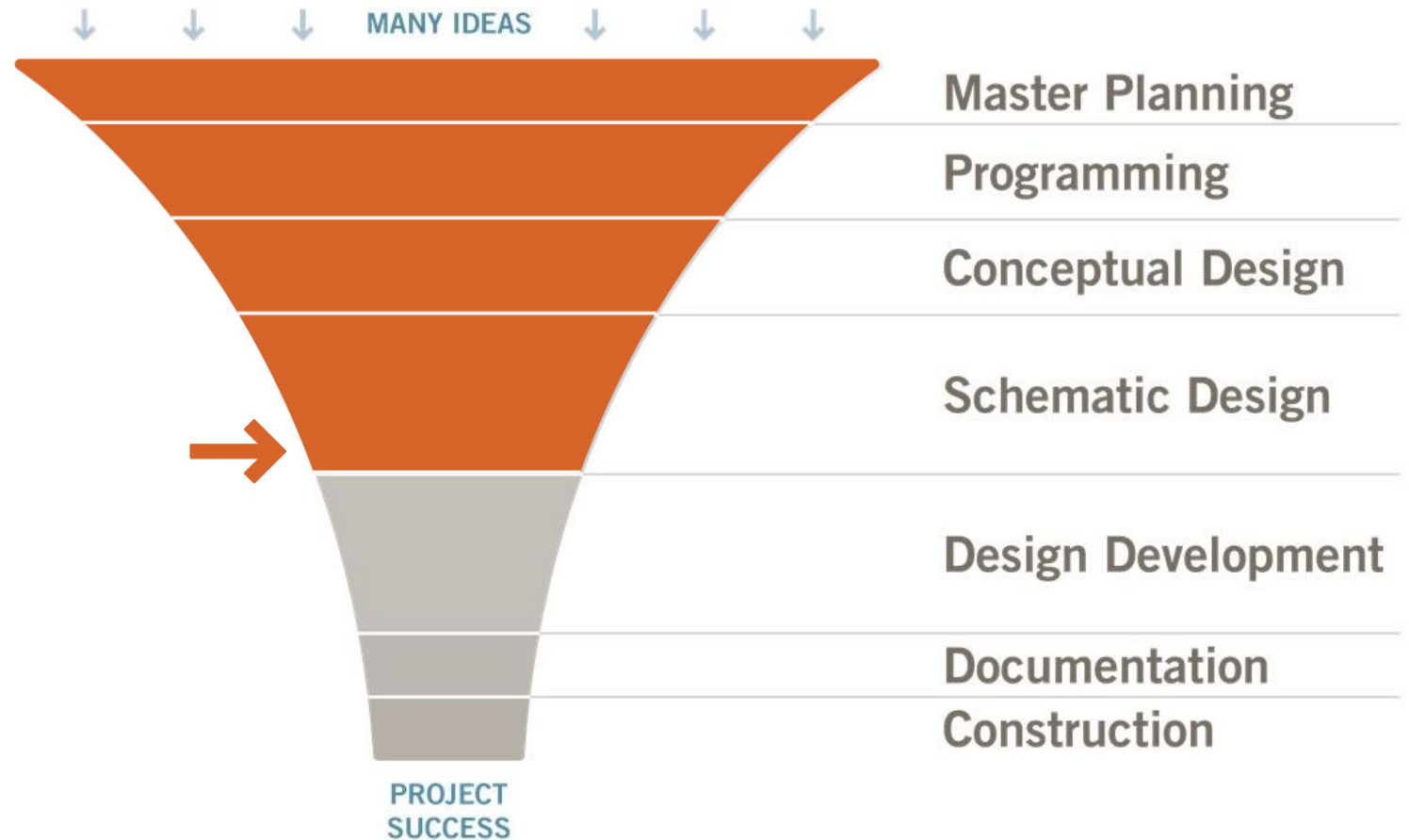
the cosmos

- media center is not a remote destination, it is integrated into students' daily lives
- effective use of circulation
- promotes student access and autonomy
- expandable

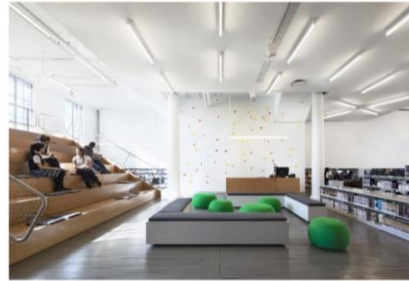
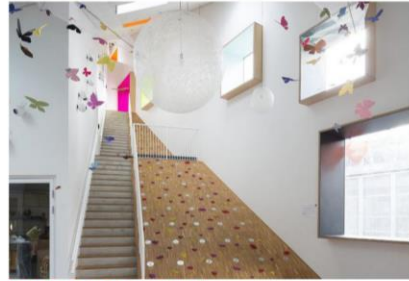


our process

schematic design (SD)
“testing the map”

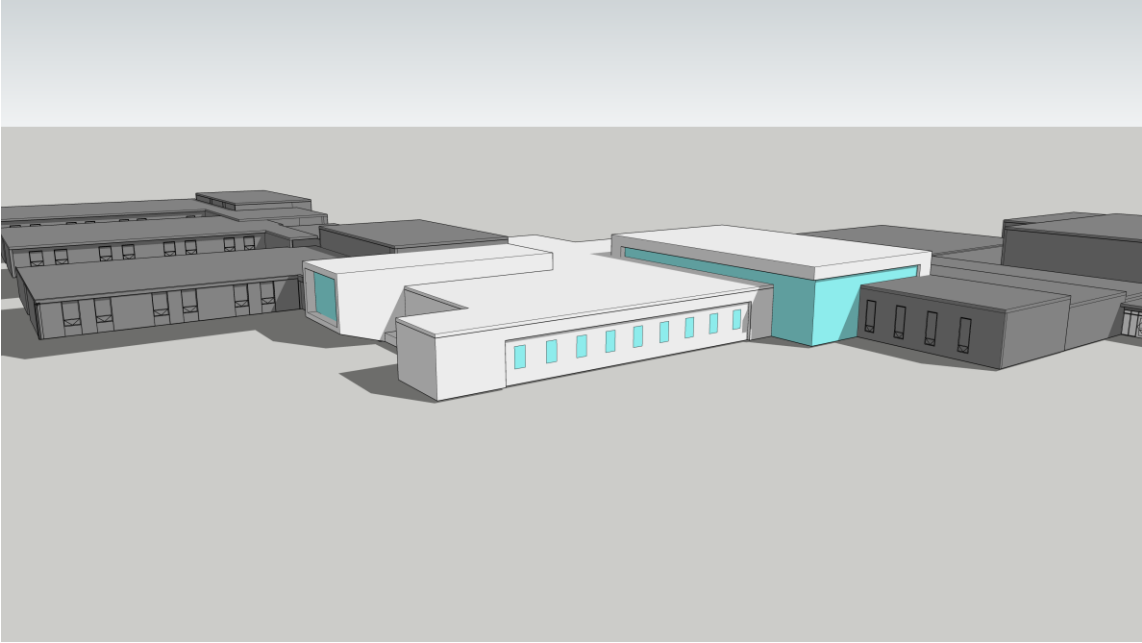
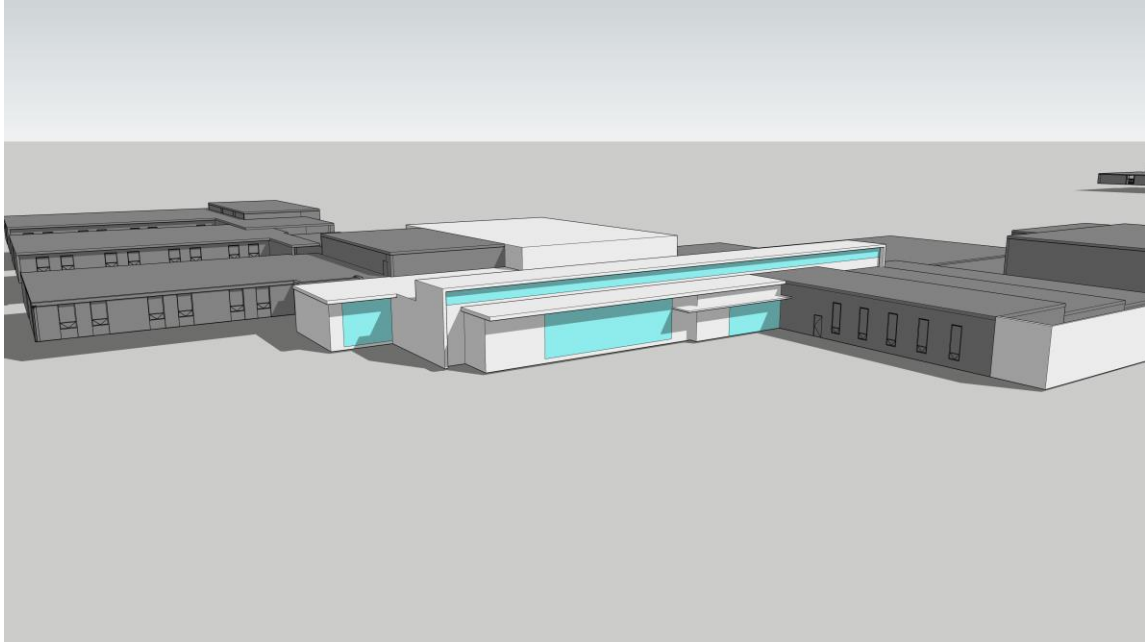






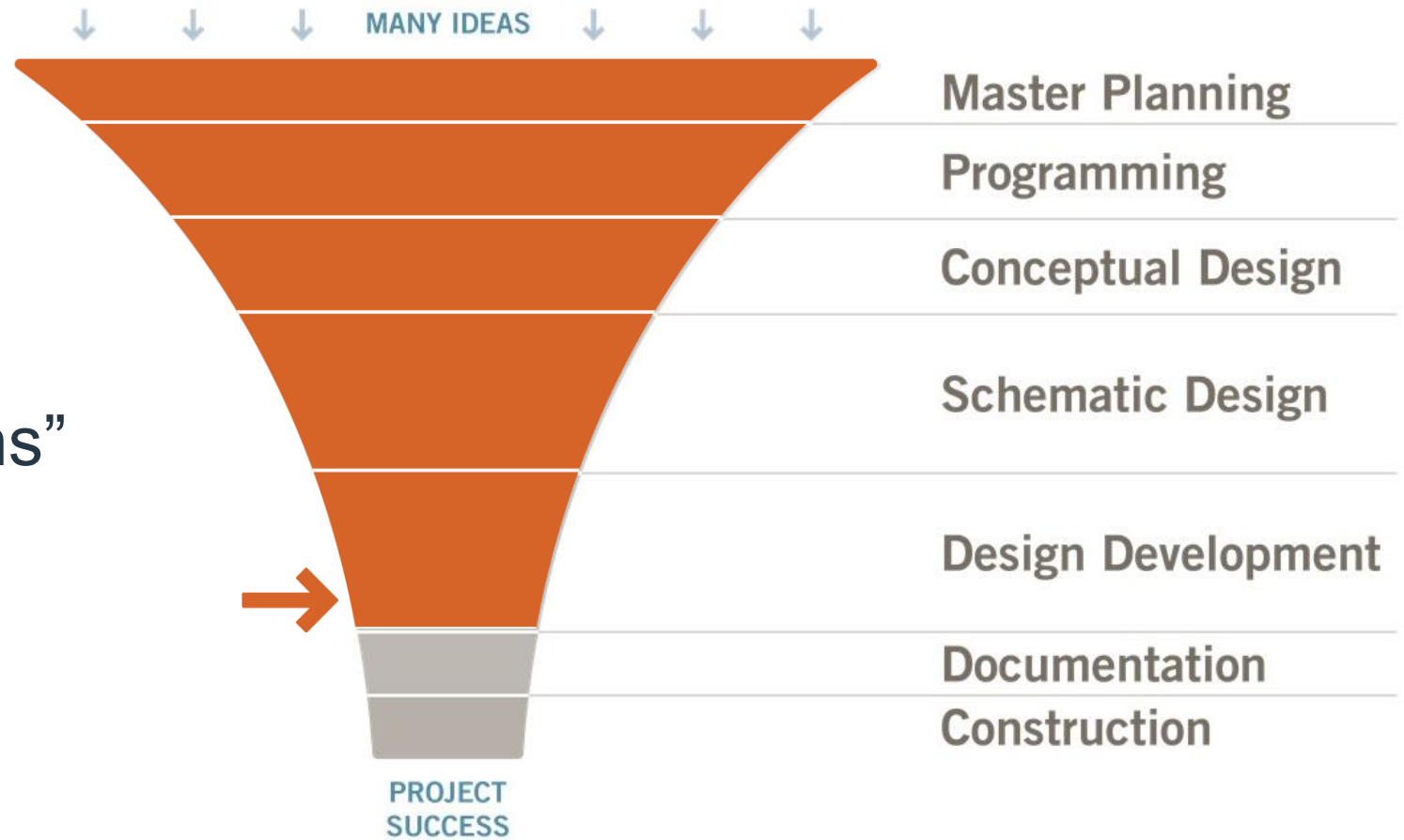


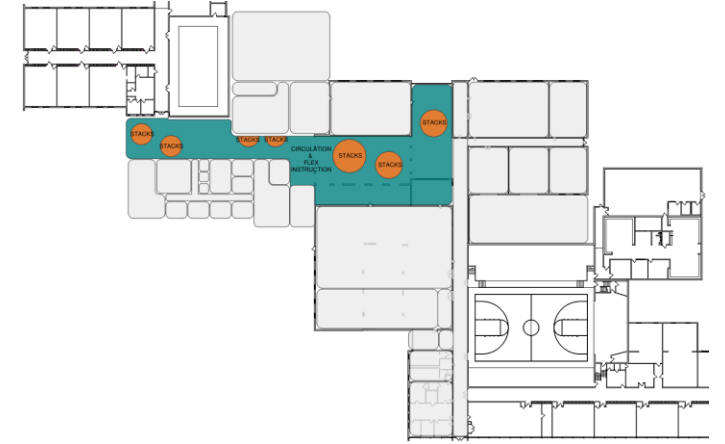
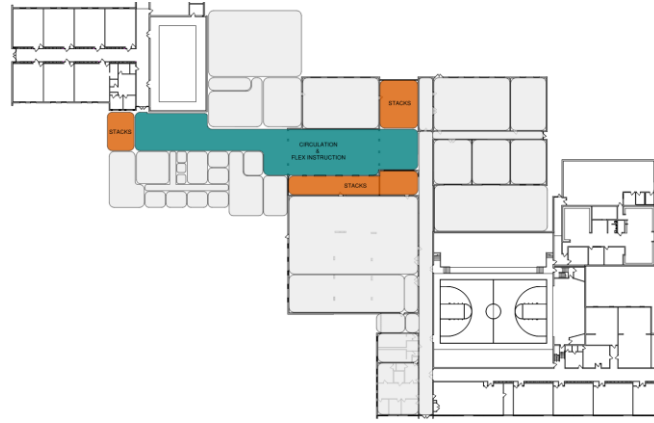
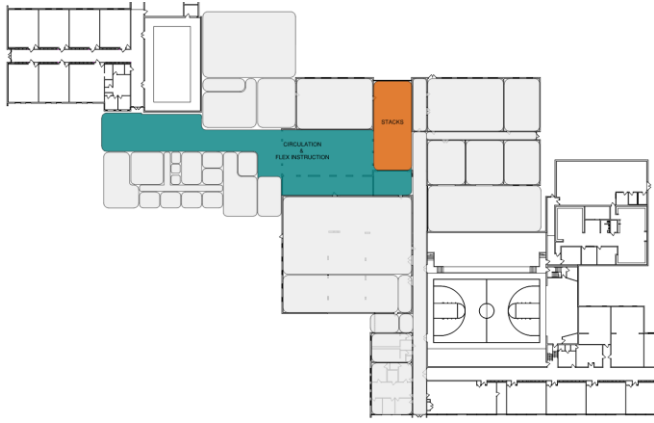
- open + collaborative
- variety of learning spaces
(group vs individual)
- varying ceiling treatment and height
define collaborative spaces
- subdued decorative lighting elements
- balance of bold colors with soft neutral
tones



our process

design development (DD)
“complete all design decisions”





refine decisions





media center



exterior

finalize & preview design

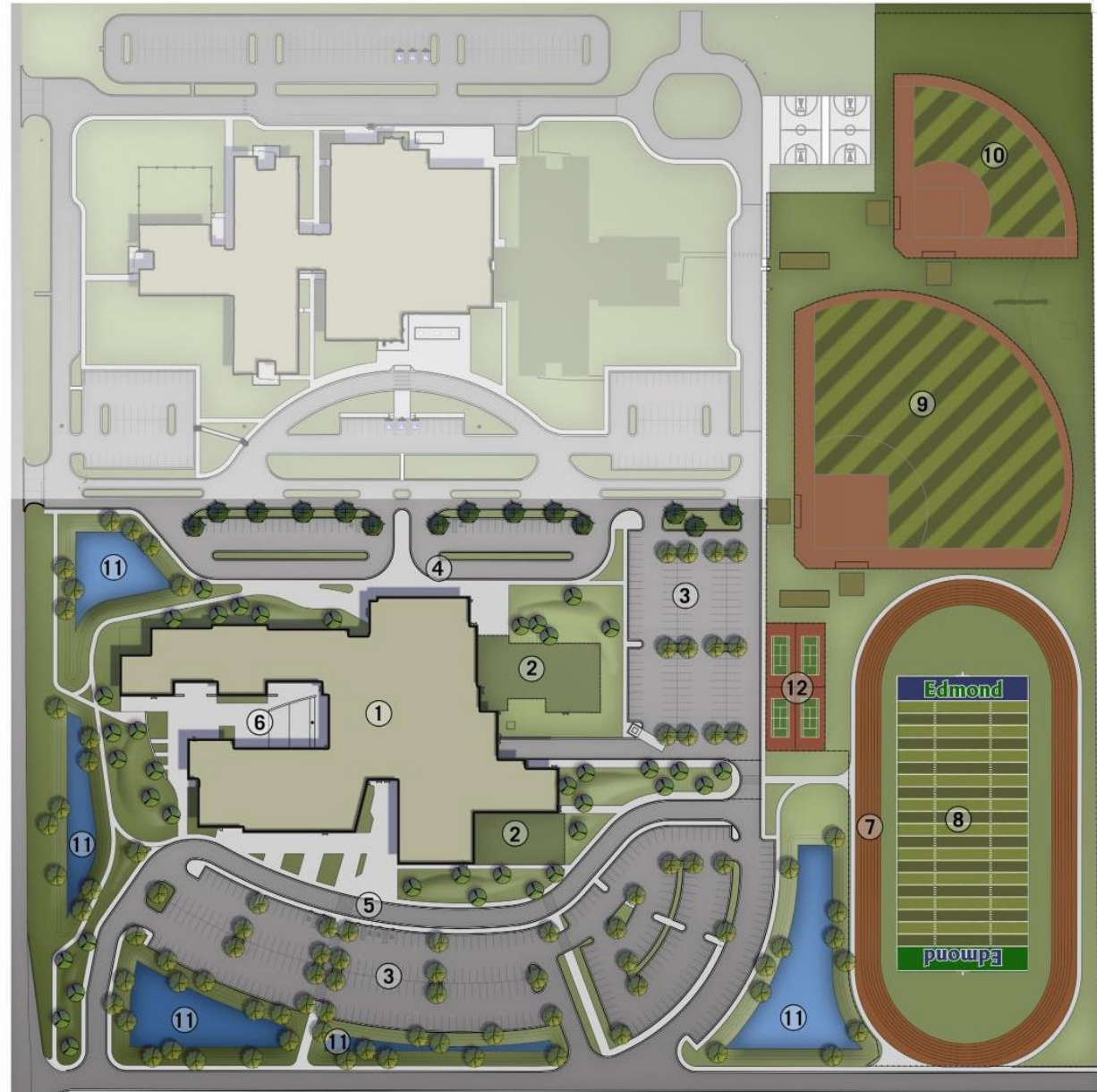


SITE DEVELOPMENT - DESIGN DEVELOPMENT

A working site was developed from the Schematic diagrams. Modifications included adjustments to the parking layout to improve vehicular traffic flow. The bus loops were also modified to improve visitor parking safety and ease of access. The permanent wet pond in the northwest corner of the site was investigated and defined to not be a priority. Finally, the student access to the athletic fields was relocated further south for better separation between student athletes and the loading dock.

SITE PLAN KEY:

1. Edmond Middle School #6 (Phase I)
2. Edmond Middle School #6 (Phase II)
3. Parking (400 +)
4. Bus Loop and Special Education Bus Loop
5. Parent Drop Off / Pick Up Loop
6. Courtyard, outdoor classrooms, amphitheater and stage
7. Six lane track
8. Football field
9. Baseball field with lights
10. Softball field with lights
11. Detention pond (shown in wet condition for clarity)
12. Tennis Courts

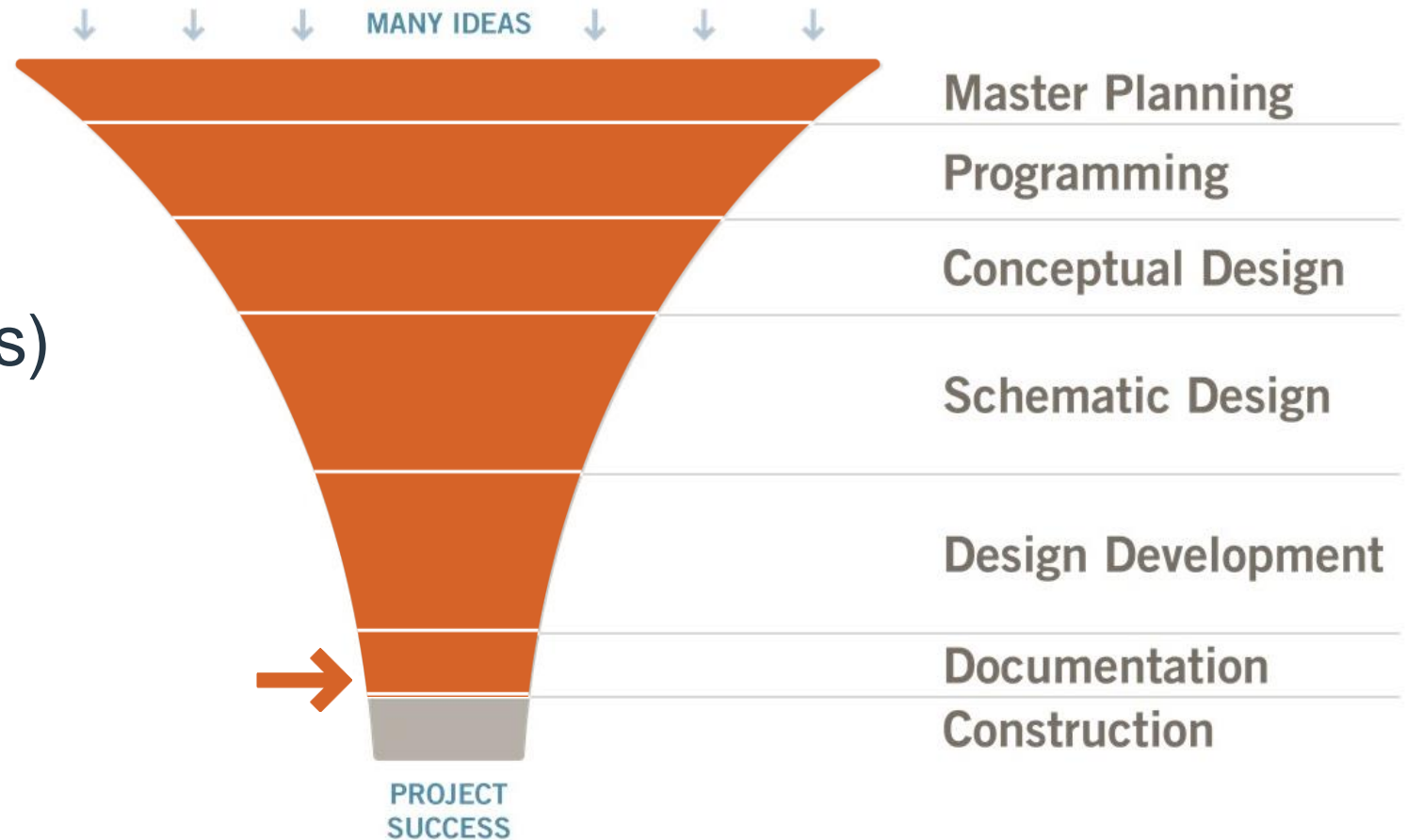


our process design development



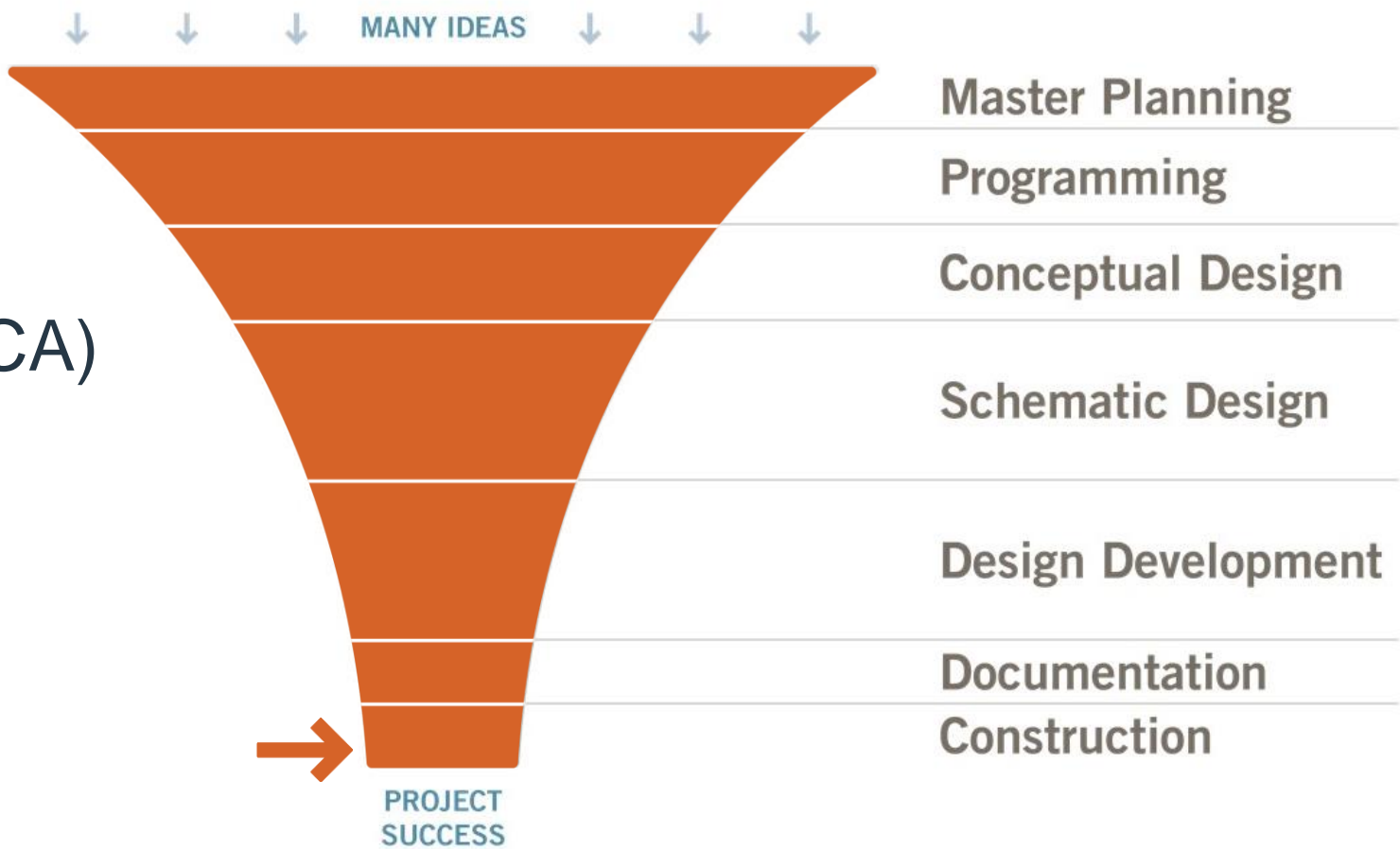
our process

construction documents (CDs)
“documenting + formatting”



our process

construction administration (CA)





media center

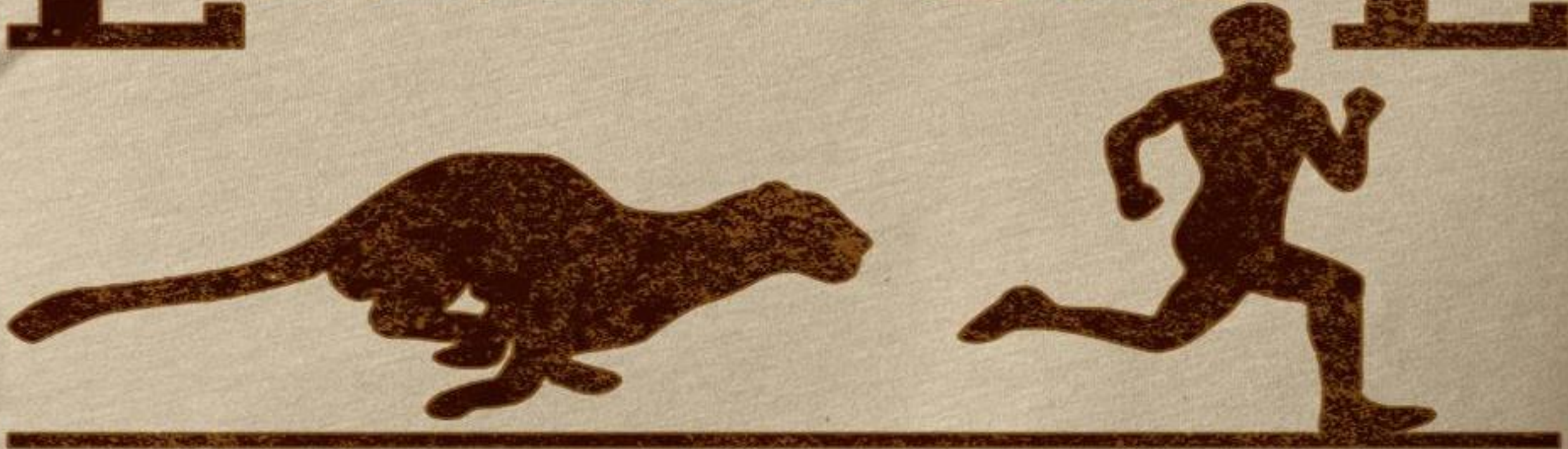


exterior

project success - your vision comes to life



EXERCISE



***Some Motivation Required.**

time for some exercises visioning



stakeholders

who will this project impact?





learners

describe your students



facilitators

describe your staff





community

describe your community





what are the
actions of your
students . . .

(give us verbs)



looking forward

- visual programming
- character statements
- building performance priorities



programming

4 week look ahead

Programming Meeting #01	Week of May 6th	Programming 01 Curriculum Mtg 01
Programming Meeting #02	Week of May 13th	Programming 02 Curriculum Mtg 02
Programming Meeting #03	Week of May 20th	Programming 03 Curriculum Mtg 03
Schematic Design Meeting #01	Week of June 3rd	SD 01



project schedule



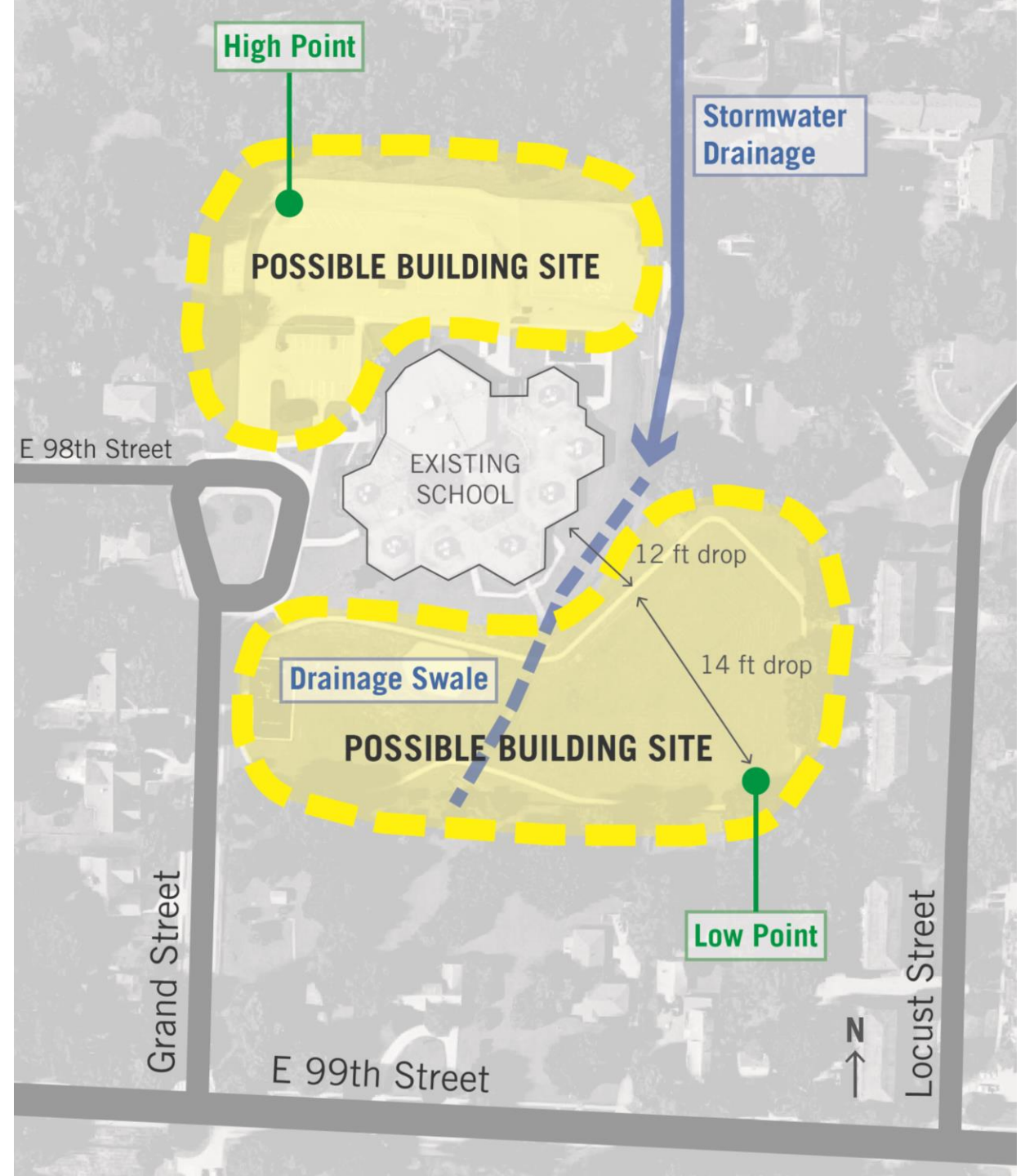
Visual Programming	04.29.2019 – 05.17.2019 (3 Weeks)
Schematic Design	05/20/2019 – 07/05/2019 (7 Weeks)
Design Development	07/08/2019 – 09/13/2019 (10 Weeks)
Construction Documents	09/16/2019 – 11/22/2019 (9 Weeks)
Quality Assurance	11/25/2019 – 12/09/2019 (2 Weeks)
Bidding & Negotiations	12/10/2019 – 03/10/2020 (3 Months)
Construction	03/10/2020 – 07/31/2021 (16 Months)

BREAK TIME



site characteristics

- main access from 98th street or grand street
- +/- 35 ft drop from nw corner to se corner
 - majority of this elevation change happens to the south of the existing building – large drop offs between the school and the trail, and south of the trail
- drainage swale bisects the southern half of the site
- possible building sites exist to the north and south of the existing building





north site

- pros:
 - less grading needed, reduces need for retaining walls
 - Views to adjacent hill and backyards
 - preserve storm drainage patterns
 - aligns well with utility lines
 - Drains well to south
- challenges:
 - narrow buildable space – limits building shape and design
 - construction access and staging limited
 - necessary temporary parking lot
 - close to single family homes to the north
 - directly affects access to existing school
- note: new building footprint will be approx. 35,000 sf on the ground level



south site

- pros:
 - more buildable area – less constraints on building design
 - Preserves existing parking lot and traffic patterns
 - easy construction access and staging
 - aligns well with utility lines
 - less impact on existing school operations
- challenges:
 - significant grading needed including retaining walls
 - elevation for parking may be above upper finished floor
 - Potential for buried classrooms / school functions
 - necessary redirection of stormwater
 - new impervious area would drain to adjacent back yards; little room to filter or slow down drainage
 - Views to back of house of apartment complex on east side
 - Potential need to relocate stormwater infrastructure


Group Discussion

q+a

did we miss anything?


thanks!


Efficient Systems

 Make district systems and technology user-friendly.

 Provide technology and systems that have user friendly platforms.

Taking Care of Students & Staff


 Support staff and students' interests, passions, mental health.


 Create a safe and secure learning environment that supports different levels of emotional and developmental needs.

 Create an environment where staff and students feel ownership over their learning experience.





Academic Achievement

 Find opportunities to let our students explore their passion for creativity and the arts.


 Create a place for integrated research based programs, and STEAM learning and partnership programs (Parents As Teachers, Math Relays, etc.)


Engagement

 Explore ways to individualize learning opportunities.

 Create flexible learning environments which encourage collaborative teaching and flexible classroom space built around individualized learning opportunities.

College & Career Readiness

 Allow teachers and students the ability to collaborate, learn, and grow in an authentic, real-time, project-based environment.

 Increase spaces for collaboration with industry partners.

