



Press On

THE CAMPAIGN FOR CREAN LUTHERAN





***I press on to make it my own,
because Christ Jesus has made me His own.
Philippians 3:12b***

PROCLAIMING JESUS CHRIST THROUGH EXCELLENCE IN EDUCATION



We **Press On** to develop Christians, Learners, and Servants for the Lord's glory. At Crean Lutheran High School, we are inspired and guided by our Mission, while intentionally and faithfully pursuing our Vision through the achievement of the following goals:

1. Providing students the highest quality, Christ-centered education in an environment that nurtures faith and celebrates God's redemptive love and grace.
2. Equipping students to intentionally enter into God's redemptive mission by learning to articulate and pass on the Gospel as well as to demonstrate His love for all people.
3. Developing our students' God-given skills and abilities that are necessary to become productive, responsible citizens whose growing relationships with Jesus Christ enable them to fulfill God's purpose in their daily lives and in their ultimate vocations.
4. Promoting healthy physical, emotional, and spiritual growth for our students.
5. Challenging students to excel, mature, and respond, both academically and socially, in a manner worthy of Christ, and to give guidance and counseling in that process.
6. Endowing students with a deep sense of servant leadership and Christian love that will impact the world and communicate the transforming power of Jesus Christ.



In the fall of 2013, Ken and Amy Beyer began looking for more than an exceptional educational experience for their two children, Sophie and Cole. They found a school they have been passionate to call "home" at Crean Lutheran. The faith-filled environment nurtures their children's faith and provides the freedom to learn in an environment that embraces the truth.

As parents, we want our children to have a strong and supportive environment; a place that understands God gave our children talents for His glory; a community that inspires our children to reach their potential academically and honors space to explore arts and athletics. This is Crean Lutheran High School. Partnering with CLHS has become one of our family's greatest joys!

Amy Beyer, parent of Sophie '17 and Cole '20

A SHINING BEACON OF FAITH AND HOPE

By God's grace, Crean Lutheran High School has become a shining beacon of faith and hope in South Orange County, where we seek to fulfill our mission of *Proclaiming Jesus Christ through Excellence in Education.*



Our students are the inspiration as we **Press On** into our second decade, committed to developing Christians, Learners, and Servants for God's kingdom. We give thanks to the Lord for His faithfulness in leading CLHS to become the 4th largest Lutheran high school in the country. He has showered our students with praise and recognition for their many outstanding accomplishments.

With the many victories of our first decade comes a unique challenge. Because of our steadily increasing enrollment, we have outgrown our original campus. Therefore, the facilities are hindering us from providing our students with an excellent CLHS experience. To address this challenge, we will be adding more than 25,000 square feet to the campus with the North Campus Expansion. This will provide two academic buildings, a comprehensive athletic facility, two collegiate-level fine arts classrooms, four dedicated studios for the performing arts, and a solution to our critical parking situation.



The promise of the North Campus Expansion rests not in its buildings, but in the opportunities the buildings will provide for our students. Additional classroom space will increase the number of courses while keeping class

size low. The Strength and Conditioning Center will provide a state-of-the-art facility for our student-athletes to prepare for competition. Specially designed classrooms and studios will strengthen the visual and performing arts programs we offer our students. Courtyards, lounges, lobbies, and meeting rooms will add a multitude of public spaces for fellowship and collaboration.

Our gracious Lord is affirming our prayers, as we **Press On** into our second decade. The North Campus Expansion will significantly enhance our ability to minister to our students, as they grow in their maturity as Christians, Learners, and Servants.

As we move toward this inspirational future, we do so with a humble attitude, a commitment to fiscal responsibility, and a fundraising plan that will allow us to expand our facilities without incurring additional debt. **Press On: The Campaign for Crean Lutheran** is an aspirational effort to raise \$6,000,000 to prepare us for the next decade. Will you join us in prayer and join us on this journey, as we **Press On** to strengthen our ability to help our students develop their minds and hearts for God's future plans and purposes for them?



ACADEMIC EXCELLENCE

13:1 Student to Teacher Ratio

21 Advanced Placement Courses

32 Honors Courses

25 Dual-Credit Courses

SAT scores consistently above state and national averages

97% of seniors matriculate after graduation

Crean Lutheran High School is committed to maintaining an unwavering, consistent, firmly-grounded, well-integrated Christ-centered worldview, identity, and mission, in a winsome, respectful, and gentle manner and in a context of a community of students, who come not only from a wide variety of Christian backgrounds, but also from a wide variety of other world religions and worldviews. I Peter 3:15 is our guide: "In your hearts set apart Christ as Lord. Always be prepared to give an answer to everyone who asks you to give the reason for the hope that you have. But do this with gentleness and respect."

Reverend Dr. Bill Bartlett, Founding Executive Director



*Then Samuel took a stone and set it up between Mizpah and Shen
and called its name Ebenezer;
for he said, "Thus far the Lord has helped us."*

1 Samuel 7:12

OUR HISTORY

Crean Lutheran High School is proud to be part of the venerable Lutheran Education system, which has been educating students in the United States for over 165 years. The vision for CLHS began in earnest in 2004, when John and Donna Crean provided the seed money necessary to open a Lutheran high school in south Orange County. Guided by their lifetime commitment to "a purposeful, meaningful, and intentional way of life," we honor their legacy, as well as that of our Founding Executive Director, Reverend Dr. Bill Bartlett.

On August 26, 2007, Crean Lutheran High School celebrated its official beginning with an inaugural worship celebration to welcome the first 100 students.

Building upon this simple beginning, our first 10 years were blessed by joyous growth, unprecedented honors, and humble recognition. As we daily *Proclaim Jesus Christ through Excellence in Education*, we also bring honor to the Crean Way, and most importantly the Lord, as we imbue these values into the student experience.

OUR ACADEMIC EXCELLENCE

Today, with nearly 800 students enrolled annually, recognized by the National Lutheran Schools Accreditation (NLSA) as an Exemplary School, and accredited by the Western Association of Schools and Colleges (WASC), CLHS has also been ranked as one of the most challenging private high schools in the United States by *The Washington Post* for the past three years in a row.

CLHS places a high value on personalized education. We proudly maintain a 13:1 student – teacher ratio and provide various academic paths designed to meet our students' personal and spiritual goals. Students now have access to 21 Advanced Placement courses, 32 Honors courses and 25 dual-credit courses that offer up to 73 college units. They earn SAT scores that are the highest of the five large parochial schools in Orange County, and consistently above the state and national averages. Our graduates not only achieve the elevated standards of the University of California A-G subject requirements, but also the rigorous admission guidelines for elite private institutions across the country.

Crean Lutheran students are already making their mark out in the community as they **Press On** to higher education. The class of 2017 is attending colleges and universities around the country that range from small, private Christian institutions to large state universities to Ivy League schools. Their majors reflect every choice imaginable, yet our graduates are prepared to stay grounded in the faith and character they built at CLHS. In recent years, more than 97% of our seniors have pursued a degree in higher education.



For just as the body is one and has many members, and all the members of the body, though many, are one body, so it is with Christ. 1 Corinthians 12:12



EXTRACURRICULAR IMPACT

Crean Lutheran is more than a center of academic excellence – our students also excel in athletics, the visual and performing arts, as well as leadership. In 2017, two students were named by the *Orange County Register* as Instrumental Artist of the Year and 3D Artist of the Year. Since fielding a comprehensive varsity sports program eight years ago, the athletic department's 26 varsity sports have earned 33 Academy League titles, five CIF titles and one California State title. For the past six years, the Servant Leadership Program has been honored to receive the California Association of Directors of Activities' Evidenced-Based Outstanding Leadership Program Award.




CLHS students have over 50 active clubs from which to select for their specific extracurricular interests. Designed to provide connectivity for students with similar passions, the clubs offer both short-term and long-term opportunities to engage, learn, and serve. They also provide student members the chance to celebrate God's unique designs for them. The purposes of the clubs are as diverse as the students who join. There are clubs dedicated to crafting, cooking, acting, sports, politics, faith, the environment, engineering, economics, community service, and international affairs among many choices.

OUR SPIRITUAL PASSION

All of the students' daily activities, opportunities, and successes are inspired by our prayerful desire to provide an environment, where they will embrace being a Christian, a Learner, and a Servant for Jesus Christ in order to make a powerful difference in our community, our nation, and our world.

Our students strengthen their understanding of Jesus Christ through an intensive study of God's Word in their Bible courses, at chapel, in small groups, and during classroom devotions. They also have many opportunities to express their faith in class, among peers, and in everything they do. Crean Lutheran's Theology Program provides our students with a robust four-year education that begins with a two-year foundation of faith by immersing students in reading and discussing the Old and New Testaments. As Juniors, they begin to apply that foundational Bible knowledge in their Christian Doctrine course. The capstone class in their senior year provides them with the opportunity to study History of World Religions and Apologetics, affording them time to develop a well-thought-out response to the HOPE that is within them.

A full-page photograph of two dancers in yellow dresses against a light grey background. The dancer in the background is in a high, arched pose with one arm raised and the other extended. The dancer in the foreground is in a lower, more dynamic pose, smiling at the camera. Both dresses have a sequined bodice and a flowing skirt.

*The dance room is a home, a space,
a safe haven, an environment for the
dancers to build relationships and to
work as a team to succeed.*

Aubrey Walsh '17,
Dance Department President, 2016-17

SERVANT LEADERSHIP TEAM (SLT)

Let no one despise you for your youth, but set the believers an example in speech, in conduct, in love, in faith, in purity. 1 Timothy 4:12



The Servant Leadership Team teaches students to use their God-given character traits in relational ministry. Each year, more than 80 Crean Lutheran students develop and hone the many skills required of servant leaders. This program provides them with a forum in which they may learn through theory and practice, and thereby engage in all aspects of campus community leadership. Team members unite the campus by providing common experiences, creating pride and spirit, honoring diversity, communicating clearly, concentrating on character education, and building connections. They thrive on the opportunity to influence the life of the school, community, Body of Christ, and most importantly, their peers.

SLT has provided me with so much support and confidence. I am blessed to have been able to spend my whole high school experience growing and learning with the Servant Leadership Team. I cannot wait to see this program grow in the coming years. Lexi Case '17 SLT President 2016-2017



COHORT PROGRAMS

Whatever you do, work at it with all your heart, as working for the Lord, not for men, since you know that you will receive an inheritance from the Lord as a reward. It is the Lord Christ you are serving. Colossians 3:23-24

The cohort programs provide students with an opportunity to explore various fields of interest while digging deeper into their faith. Students see their future professions from a Christian perspective, which is something that is special and unique to our programs. We are so proud of what the Lord is doing with the cohorts and how He is growing the students in each of them. Jasmine Anderson, Cohort Director

Experiential learning, research and internships shape the unique and exciting opportunities for CLHS students who participate in one of three Christ-centered and scholastically rigorous cohorts. These courses have been designed to equip our students for academic and professional success in medicine, engineering, and business. The three cohorts provide significant added value to our students' educational experiences and preparation for their future career paths.



My experiences as a medical cohort student have confirmed my desires to pursue a career as a medical doctor. Through this program, I have had the opportunity to visit training programs, and have had the chance to participate in hands-on labs and lectures by medical professionals regarding their careers. I am so grateful for the medical cohort program and all I have reaped from being a part of it. It has truly opened horizons in the medical field to me that I never would have dreamed possible before college. Danielle Liu, '17

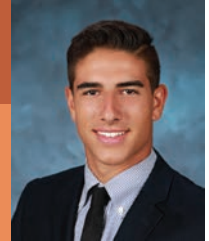
MISSION TRIPS



How then will they call on Him in whom they have not believed? And how are they to believe in Him of whom they have never heard? And how are they to hear without someone preaching? And how are they to preach unless they are sent? As it is written, "How beautiful are the feet of those who preach the good news!" Romans 10:14-15

As part of Crean Lutheran's commitment to equipping our students to be mission-minded and to always be prepared to give the reason for the hope within them, students have the opportunity to participate in numerous mission and outreach projects each year. These include multi-generational mission trips to such places as Cuba, El Salvador, Hungary, and Mexico, as well as a wide variety of personal ministries here at home through an initiative called Faith Alive.

Mission trips are a great opportunity to remove all the distractions and really focus on sharing God's word with people who have yet to come to know and receive the gift of eternal life. It is also an opportunity to experience God's power in ways that you never have experienced before. Andrew Antoun '17



LEARNING SUCCESS PROGRAM (LSP)

Therefore if you have been raised up with Christ, keep seeking the things above, where Christ is, seated at the right hand of God. Set your mind on the things above, not on the things that are on earth. For you have died and your life is hidden with Christ in God. When Christ, who is our life, is revealed, then you also will be revealed with Him in glory. Colossians 3:1-4

Students with varying academic needs and learning styles are welcomed at Crean Lutheran. They are provided with a comprehensive, yet customized, program designed to meet their learning needs. The LSP lab is designed to provide individualized support that empowers learning success. In addition, all LSP students learn through the development of strategies and skills designed to foster independence and personal academic achievement. The resources of the program range from specific learning accommodations to individual hands-on assistance across all content areas and accounting for individual learning opportunities. Our overarching goal is to further students' relationship with Jesus Christ, while helping them excel academically.



The Crean Lutheran staff is very accommodating and loving toward the students as they seek to do the Lord's work in their lives. I have two children with learning challenges and the Learning Success Program at CLHS was a critical component of their success. The flexibility and compassionate understanding of the CLHS staff made all the difference in our children's ability to develop academically, socially, and spiritually. Our oldest son is moving forward with his education at the American University in Paris and our daughter will be continuing her education at Concordia University in Irvine. As parents, we believe that our children's education at CLHS was the single best investment we have ever made.

Mark Ghassemi, Parent of Maryam '17 & Masih '16



AMBASSADOR INTERSHIP PROGRAM

Therefore, we are ambassadors for Christ, God making his appeal through us. We implore you on behalf of Christ, be reconciled to God. 2 Corinthians 5:20

Students who participate in the Ambassador Internship Program develop and provide critical outreach and service support to Crean Lutheran's External Relations Department. Program Coordinator MJ Werner shares, "These students serve as the hands and feet of God. They see a need and fill it." Whether welcoming visitors to campus, serving as tour guides for prospective students, facilitating at Development and Admissions events, leading church outreach efforts, speaking at chapel events, or making phone calls and interfacing with prospective donors, these students are advocates for Crean Lutheran. They introduce the school and our mission to a broader community. In addition to their outreach and service opportunities, Ambassadors participate in five professional development sessions during each school year to further their personal growth.



Serving as an Ambassador has given me more than I could have



imagined. Along with becoming close to the staff that serves as the backbone of Crean Lutheran, I was given the opportunity to give back to the school that has formed me into the man I am today. Being an Ambassador has equipped me with stronger leadership qualities and helped me learn how to show the love of God.

Ryan Lidd '17

To advance both the traditional and experiential learning opportunities that embody our mission, the North Campus Expansion will include two permanent steel frame buildings, providing more than 12,000 s/f of space. These are:

Arts & Athletics Building - 5,760 s/f Permanent Steel Frame Building

- 1,400 s/f - Visual Art Room to further the school's award-winning art program
- 800 s/f - Additional Visual Art Room
- 1,400 s/f - Servant Leadership Team meeting room to further the school's award-winning student government/leadership program
- 1,000+ s/f - Team Room to accommodate team meetings for Saints Athletics
- Restroom facilities
- Staff and Department Offices

Academic Building - 6,480 s/f Permanent Steel Frame Building

- Five multi-purpose, interdisciplinary classrooms
- 1,000+ s/f - Student Lounge and Art Gallery
- Faculty and staff work space
- Restroom facilities

Together, these two buildings will provide critically needed space and state-of-the-art instructional facilities. They will also provide the space for students to develop their God-given gifts and abilities.

PRESSING ON FOR ACADEMIC EXCELLENCE

*Trust in the LORD with all your heart and lean not on your own understanding;
in all your ways acknowledge Him, and He will direct your paths.*

Proverbs 3:5-6



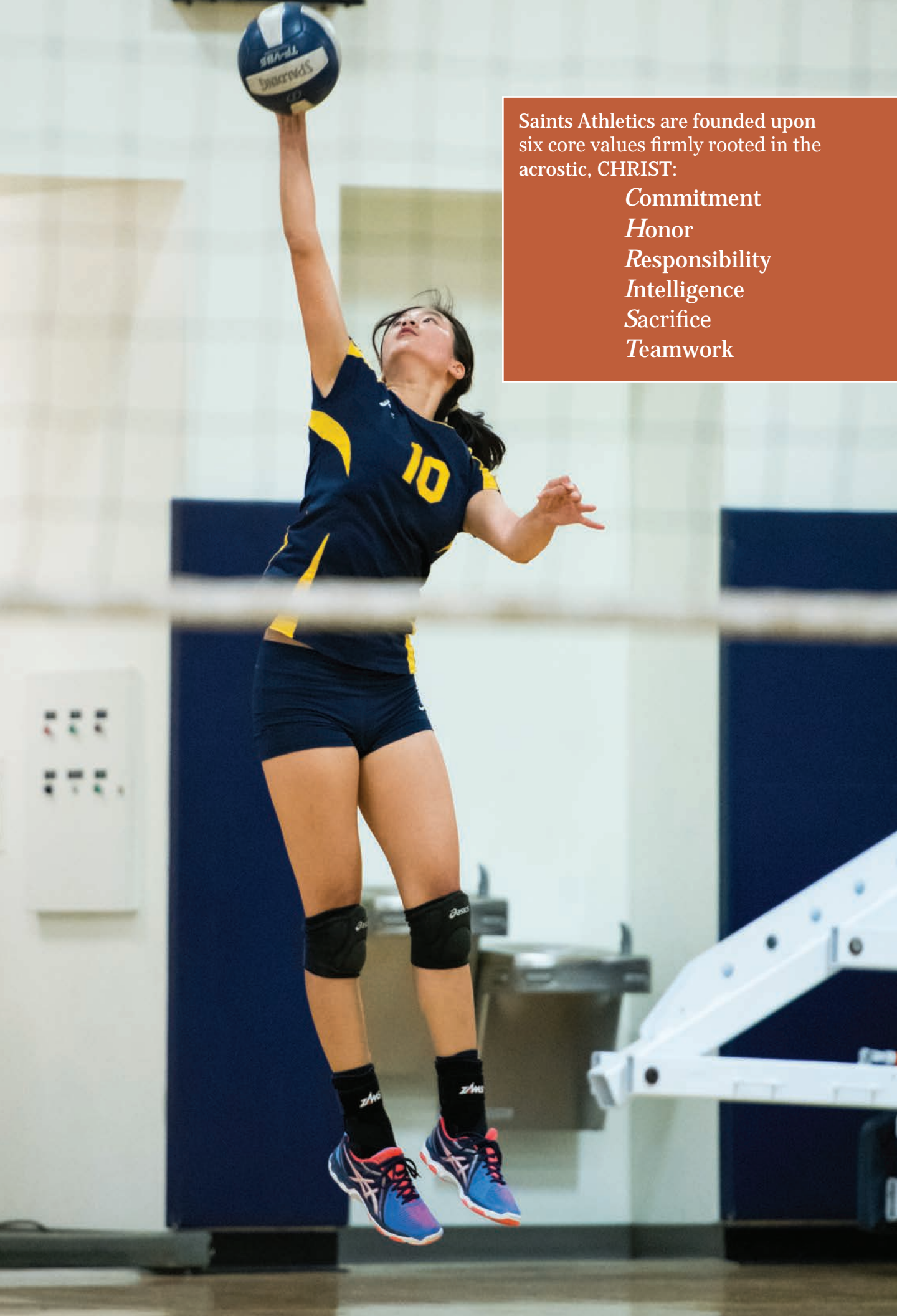
At Crean Lutheran, we understand that education is about more than textbooks. We educate and support the whole student and provide the opportunity for each student to further his or her unique gifts and talents for the purpose of glorifying our Lord and Savior, Jesus Christ.

When our North Campus Expansion is completed, our students and faculty will be blessed with five new classrooms, gathering spaces for students and faculty, critically needed meeting and office spaces, and courtyards for fellowship and study. This will allow us to maintain the small class sizes and personalized learning experiences that are hallmarks of our success. The expansion will also provide enhanced classroom spaces dedicated to specific subjects, enabling a

state-of-the-art learning environment. These new spaces will enable our students to further develop their gifts and extend



their education through a multitude of experiential learning opportunities as well. The experiential education and extracurricular programs that will benefit include: the Servant Leadership Team (SLT), the Learning Success Program (LSP), Cohort Programs, the Ambassador Internship Program, and Mission Trips.



Saints Athletics are founded upon
six core values firmly rooted in the
acrostic, CHRIST:

Commitment

Honor

Responsibility

Intelligence

Sacrifice

Teamwork

PRESSING ON FOR ATHLETIC EXCELLENCE

Do you not know that in a race all the runners run, but only one receives the prize? So run that you may obtain it. 1 Corinthians 9:24

Our teams compete for God's glory. The growing success of Saints Athletics comes from Him, but, our students need facilities that will develop and maximize their highest levels of competition.

Eric Olson
Athletic Director

Over the past decade, Crean Lutheran's athletic program has grown to 26 varsity-level sports. Our student athletes are successful in spite of the less than ideal conditions in which they practice and train. Conducting strength and conditioning training outside in the rain, high winds, extreme temperatures, limited practice facilities, cramped locker rooms, and no defined team rooms, have produced a situation that is challenging to the excellence we seek. Nevertheless, our Crean Lutheran Saints **Press On**.

A distinguished member of CIF, Crean Lutheran's Athletic Department offers a competitive and character-building program where students are challenged to participate with integrity and faith. Saints Athletic teams have distinguished themselves in eight short years of varsity competition.

Crean Lutheran student athletes have gone on to compete in both NCAA and NAIA programs. More than a dozen current students and alumni are nationally ranked and some are even Olympic hopefuls. Of our alumni, these include sisters Ella Eastin '15 and Emily Eastin '16 who are now swimming at Stanford University and the University of Michigan. Soccer Goal Keeper Hillary Beall '17 recently qualified for the U.S.A. Women's National Development Team. Will Tomlinson '16 joined the Brown University Baseball team as a starting pitcher. Diver Colten Young '17 joined Princeton's diving team.

The original athletic facilities will be enhanced with the additions of a Strength and Conditioning Center, training field, space for team meetings, and Athletic

Department offices. The Strength and Conditioning Center's unique design will feature an open concept with plenty of room for multiple teams to work out. It features large, glass, retractable doors, which will integrate this building with the adjacent training field. The new field will extend the space available for a variety of different conditioning activities and will safely accommodate many more athletes.

Finally, the Center includes space for a nutrition area, plus pre-workout and post-workout areas to allow for team preparation and debriefing meetings. Overall, the atmosphere will be inspiring, displaying God's Word and motivational school spirit designs. With this designated space, our athletes will **Press On** to become stronger, faster, and more competitive as members of the CIF Empire League.

To address the facility challenges our student athletes endure, the North Campus Expansion will bring together the elements that are missing from our comprehensive athletic facilities. These include:

Housed within the Arts and Athletics Building

1,000 s/f - Team Room to accommodate team meetings for Saints Athletics

Strength and Conditioning Center

4,500 s/f Permanent Steel Frame Building

- Indoor training space with retractable doors that extend the workout area, which is located next to a 50-yard training field
- State-of-the-Art weight training and cardio-conditioning equipment

Synthetic Turf and Lights for the Saints Stadium

PRESSING ON FOR EXCELLENCE IN THE ARTS

Let them praise His name with dancing, making melody to Him with tambourine and lyre. Psalm 149:3



*We are so blessed to have a wonderful performing arts program that teaches and supports our students to utilize their God-given talents. We have very gifted musicians, singers, dancers, actors, and artists, who are looking forward to the next chapter of the visual and performing arts. These students have managed well in their learning environment and **Press On** to perform to the best of their abilities. However, we eagerly look forward to seeing how God will use this new space to create masterpieces for His Kingdom.*

Alyssa Jones

Visual and Performing Arts Department Director

Crean Lutheran supports the visual and performing arts by nurturing each artist's God-given creative talents. Student-artists perform in a variety of settings including theatrical productions, instrumental concerts, choral concerts, and dance performances. Crean Lutheran's commitment to excellence in the visual and performing arts includes dedicated

education beyond the formal classroom and into the creative sphere.

Our visual and performing artists are afforded exciting platforms to showcase their talents through exhibitions both on-campus and off-campus. As we **Press On** to excellence in the visual and performing arts, Saints artists have been recognized by the Orange County Pacific Symphony, South Coast Repertory Theater, the City of Irvine, Fine Arts Council, the Irvine Youth Arts Show, and most recently, two students were honored as Artists of the Year by the *Orange County Register* – 3D Visual Artist, Ze Zoe Zhou '17 and Instrumental Artist, Aileen Chung '17.



space for each creative style of expressing God's beauty in the arts on earth. With four choral music groups, five instrumental music groups (plus the praise band), four levels of dance (plus the song squad), two levels of theater classes, and nine visual art genres from which to choose, Saints artists have a wealth of options to extend their

With the school's unprecedented growth over the past decade, the current space that serves as the home for each of these groups is, quite literally, bursting at the seams. Although the student artists **Press On**, their learning environment limits creative expression and a pursuit of excellence. The North Campus Expansion will address our student-artists' needs.

Crean Lutheran's music program helped me realize that I can contribute and inspire multiple parts of our amazing music program as long as I commit, have passion, and glorify God when I play music.

Eric Kim '19
Orchestra Member



DANCE STUDIO

*You turned my wailing into dancing; you removed my sackcloth
and clothed me with joy. Psalm 30:11*



One of my favorite things about dance at Crean Lutheran is the Dance Ensemble Class. I love that we dance in chapels because it helps me focus not on myself but on God.

Julie Koyamatsu '20
Dance Ensemble



Crean Lutheran dancers currently rehearse in a small space that significantly limits their ability to perform. Beginning dancers do not have the opportunity to stretch out and see how they can move in full extension. Advanced dancers mark their routines for fear of colliding with other teammates if they stretch out and truly move. Visitors and personal equipment bags clutter the dance floor, further limiting the available area in which these talented young students prepare to share the light of the Lord with their audiences. Yet still, they **Press On**, demonstrating God's beauty through movement.

The dance studio will include a full-sized, state-of-the-art Marley Floor on which students can fully extend themselves without fear of bumping into each other or the walls. It will include a foyer for the dancers to prepare for class, as well as a storage area for them to leave their bags and equipment. There will also be a glassed-in area that will serve jointly as an observation area for visitors and an office for the dance faculty.

To address these challenges, the North Campus Expansion will include a 2,900 s/f Permanent Steel Frame Building that will house the Dance Studio, including:

- 2,000 s/f Dance floor
- 800 s/f Stretching warm-up area
- Office and storage space

I've learned that you can share Jesus' light through dancing and how powerful it can be.

Delaney O'Keefe '20
Dance Ensemble





Being part of the Drama Department is like being part of a family. Not only have I made awesome friends, but I've been given the opportunity to discover and develop many new talents.

Lucas Tokarzewski, '18

DRAMA STUDIO

What you have learned and received and heard and seen in me – practice these things and the God of peace will be with you. I rejoiced in the Lord greatly that now at length you have revived your concern for me. You were indeed concerned for me, but you had no opportunity. Not that I am speaking of being in need, for I have learned in whatever situation I am to be content. I know how to be brought low, and I know how to abound. In any and every circumstance, I have learned the secret of facing plenty and hunger, abundance and need. I can do all things through Him who strengthens me. Philippians 4:9-13



After retiring as a professional actor, James Whitson was called to his second career as Crean Lutheran's Drama teacher. Mr. Whitson's students are blessed to benefit from his extensive professional experience as well as his deep personal faith in the Lord. He urges his students to learn and rehearse as God teaches us to do in Philippians 4.



Mr. Whitson's drama students presently learn the craft of acting in a small, shared-use room that is cluttered with choir risers, drum sets, a grand piano, and music stands. There is never enough room to perform scenes with more than three people, limiting the actor's ability to develop a sense of separation from the audience. Yet still, they **Press On**, faithfully executing the actions and the words of their performances to God's glory.

A dedicated Drama Studio will provide adequate space for acting classes and rehearsals plus storage for costumes and sets. It will give Crean Lutheran's drama troupe enough room to produce small-scale performances on our own campus as well.

To address these challenges, the North Campus Expansion will include a 2,160 s/f Permanent Steel Frame Building that will house the Drama Studio, including:

- 1,727 s/f Rehearsal space
- Office and storage space

VOCAL AND INSTRUMENTAL MUSIC STUDIOS

And let the peace of Christ rule in your hearts, to which indeed you were called in one body. Let the word of Christ dwell in you richly, teaching and admonishing one another in all wisdom, singing psalms and hymns and spiritual songs, with thankfulness in your hearts to God. And whatever you do, in word or deed, do everything in the name of the Lord Jesus, giving thanks to God the Father through Him. Colossians 3:15-17



Our program uses music to bring the love of God to our students and our community.

Jonathan Pratt, Instrumental Music Director

Every day, Music Director Jonathan Pratt carefully juggles schedules to accommodate practice times for the school's nine musical ensembles. Choirs rehearse in the same space as the jazz band, and the orchestra shares practice space with the athletic teams. This means that the acoustics suffer, and our students' musical development is limited by the facilities in which they rehearse. Yet still, they **Press On**, singing God's praises to the Heavens above.



The Vocal and Instrumental Music Studios will provide much needed space that will be designed to meet the acoustical and structural needs of our various performing arts ensembles. Students who seek to praise God through their music will have dedicated studios they can call "home," where they can develop both musically and personally.

To address these challenges, the North Campus Expansion will include two 1,440 s/f Permanent Steel Frame Buildings to house the Vocal Music Studio, and the Instrumental Music Studio. Each Studio will include:

- 1,240 s/f Rehearsal space
- Office and storage space



Participating in the music program at Crean Lutheran High School has given me a new perspective on what it means to glorify God with my voice. The focus on proclaiming God's word within ensembles has allowed me to perform with humility for an audience of One.

Mia Villegas, '18
Choir Member

VISUAL ARTS STUDIOS AND GALLERY

In the beginning, God CREATED the heavens and the earth. Genesis 1:1



The Visual Arts program at Crean Lutheran provides a healthy environment for students to cultivate creativity, pursue technical excellence, and see Christ in the world around them. Whether my students are exploring their art for the very first time or are enrolled in AP Art, we incorporate a Christian worldview and focus on the idea that we create because we are created in the image of God.

Anna Bloomfield, Art Teacher



The Visual Arts program has helped me become more expressive in my art, and it has made me look at things with a different perspective instead of just doing what other people have already done. I know the new arts building will inspire artists to see what Crean Lutheran has to offer. The new facilities will be a great place for artists to express themselves through various mediums, under the direction of amazing Christian teachers, who are available and eager to guide them to their full potential in the visual arts.

Amber Underwood '17

Visual Arts students are currently constrained by a lack of light, dedicated workspace, specialized equipment, and storage areas. The creative faculty manage to teach Exploratory Art, Drawing and Painting, Sculpture, Photography, Advanced Art, and AP Art in a general classroom. Yet, the students **Press On**, to celebrate God's creative spirit in their works of art.

The Visual Arts studios and gallery will further the school's award-winning art program and include space to teach art classes that are designed for this purpose. Specifically,

they will include the lighting, equipment, materials, work-stations, and storage required to provide an excellent arts program that matches our students' skill. Not only will the students have high-fire kilns and outdoor patios with which to work, the Visual Arts department will have a unique gallery designed for students to display their creations to the community.

To address these challenges, the North Campus Expansion will include three dedicated spaces within the two new academic buildings:

- 1,400 s/f - Large Visual Art Studio
- 800 s/f - Small Visual Art Studio
- 1,000+ s/f - Student Lounge and Art Gallery



PRESSING ON WITH ACCOUNTABILITY AND GOOD STEWARDSHIP

*As we **Press On** to our beloved school's second decade, imagine the innumerable ways that lives will be touched in these new buildings that will make up our new North Campus – students, teachers, parents, visitors-only the Lord knows them all.*

Sue Berkel
Alumni parent of Katy '15

Sue Berkel cannot contain herself when she proclaims her love for Crean Lutheran High School. It is with enthusiasm and grace that she, her husband Jeff, and their daughter Katy shout their thanks to the Lord. Sue and Jeff watched Katy's confidence, athleticism, friendships, and love for the Lord blossom and gave thanks to Crean Lutheran for helping shape her into the young Christian leader she is today. They will tell you that their own faith has been shaped by their experiences at CLHS as well. Every time they hear the traditional Irish Blessing sung, they are reminded of how blessed they are by the wonderful relationships they have built as part of the Crean Lutheran family.



As we **Press On** toward our second decade of *Proclaiming Jesus Christ with Excellence* in all that we do, the growth of the student body is a blessing we celebrate daily. However, this blessing has been compromised by severe space shortage, limiting opportunities for our students to excel. The North Campus Expansion is part of the school's Master Plan and signals the beginning of the next stage in Crean Lutheran's journey.

Press On: The Campaign for Crean Lutheran will have a far-reaching impact on future generations of students, the community, and the school's ministry. We are asking those who believe in the mission, impact, and vision of CLHS to join us as we prepare our campus for the next milestone of our journey. The following is the budget for the North Campus expansion project:

Project Budget*		
Building delivery, installation, refurbishment & customization	\$3,250,000	54.1%
Land preparation, fire lane, flatwork, landscaping, etc.	\$1,750,000	29.2%
Engineering, geotech, survey, inspection, planning & permits, etc.	\$325,000	5.4%
Weight room & locker room equipment	\$250,000	4.2%
Dance studio floor, bars, mirrors, and equipment	\$175,000	2.9%
Music room, risers, instrument storage, and equipment	\$150,000	2.5%
Practice field preparation & drainage maintenance	\$100,000	1.7%
TOTAL CAMPAIGN GOAL	\$6,000,000	100%

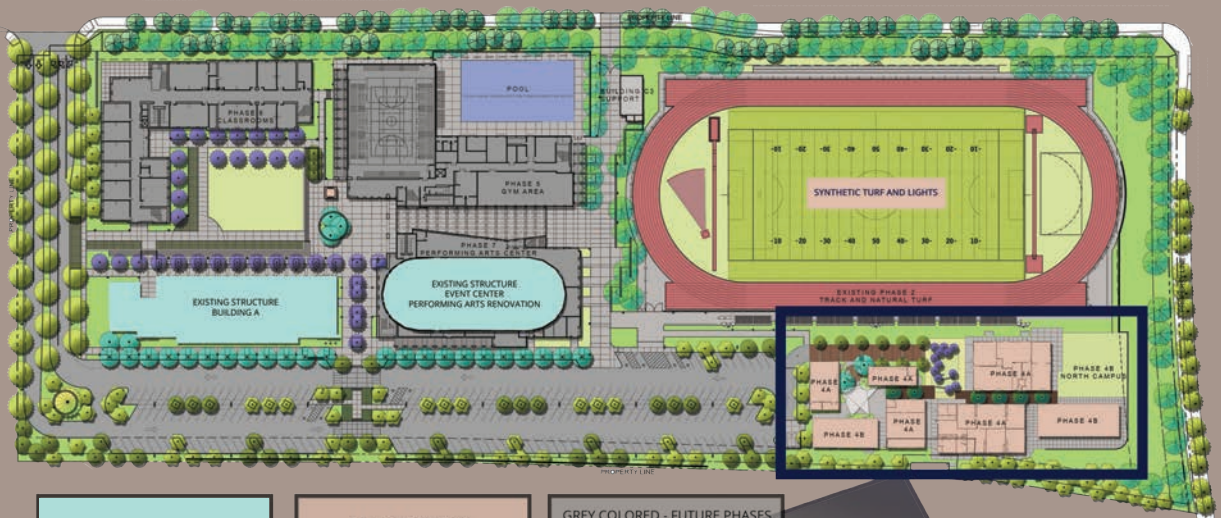
* Budget contains 16% for contingency and fundraising expenses; full budget detail available upon request.

MASTER PLAN

Go therefore and make disciples of all nations, baptizing them in the name of the Father and of the Son and of the Holy Spirit, teaching them to observe all that I have commanded you. And behold, I am with you always, to the end of the age. Matthew 28:19-20



The North Campus Expansion will provide two new academic buildings, a comprehensive Strength and Conditioning Center, studios dedicated to each of the elements of Crean Lutheran's Visual and Performing Arts program, and a multitude of public spaces for fellowship and collaboration.



EXISTING STRUCTURE

SALMON COLORED STRUCTURES INDICATE SOON TO BE CONSTRUCTED

GREY COLORED - FUTURE PHASES
GYM CONSTRUCTION
PERFORMING ARTS RENOVATION
ACADEMIC BUILDING
PERFORMING ARTS CENTER

NORTH CAMPUS EXPANSION PROJECT



PLEASE JOIN US AS WE PRESS ON!

But whatever gain I had, I counted as loss for the sake of Christ. Indeed, I count everything as loss because of the surpassing worth of knowing Christ Jesus my Lord. Philippians 3:7-8a



CHRISTIAN

I have a relationship with Jesus Christ that is evident, and I am able to share the gospel through the power of the Holy Spirit.

LEARNER

I use the gifts and abilities given to me by the Lord to honor and glorify Him.

SERVANT

I seek opportunities to serve wherever Christ may call me.

As we **Press On** into our second decade and embark upon this exciting journey, we do so with prayer, anticipation, and gratitude for the Lord's work to be furthered in the lives of our students. We humbly ask the Lord to use every gift and resource available to help our students to know Him more and make



Him their own as He has made them His own. Whether it is through becoming a more disciplined student, a more competitive athlete, or a more accomplished artist, we ask the Lord to use our staff and faculty, as well as our facilities, to guide our students toward loving and knowing Him more. Our mission of *Proclaiming Jesus Christ through Excellence in Education* will continue to guide us in all we do, as we endeavor to develop our students to be faithful Christians, Learners, and Servants.

We invite you and your family to accompany us as we **Press On** to impact God's Kingdom with the next generation of Christian leaders that our communities, nation, and world so desperately need. Please pray and partner with us to expand our campus in order to meet the needs of our students and allow them to **Press On** with excellence in all that the Lord has assigned to them.



***Who am I, O Lord God, and
what is my house, that
You have brought me thus far?
2 Samuel 7:18b***

For more information, please contact:
Crean Lutheran High School, Development Department
12500 Sand Canyon Avenue, Irvine, CA 92618
949-387-1199 • CLSHS.org
Press-On@clshs.org



Danielle Benson
Class of 2017

Kevin Chao
Class of 2017

Lexi Case
Class of 2017



CREAN LUTHERAN
HIGH SCHOOL