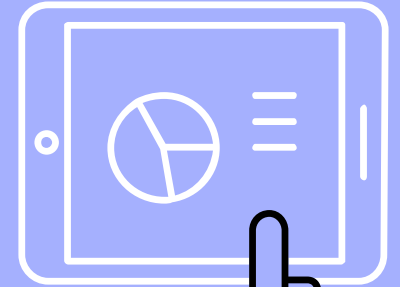
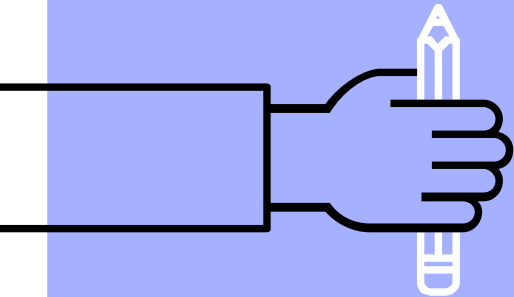
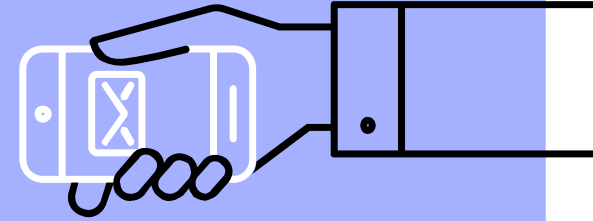
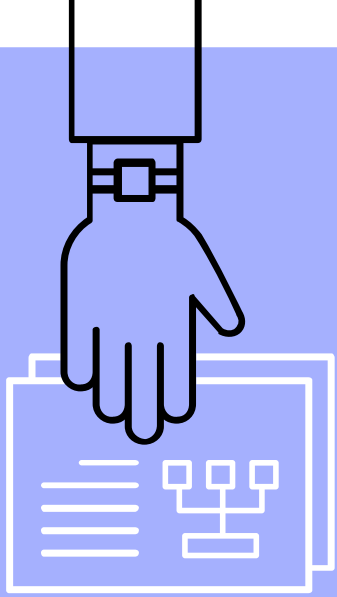


Sunrise Park Middle School - Strategic Site Plan



Background

- ▶ 55+ participants on strategic team & action teams
- ▶ Staff, Parents, and Students





“

*At Sunrise, we
value...*

*Whole Child
Learning for All
Collaboration*





“

*We will work toward our
vision by leveraging...*

Time

Learning Spaces

Communication



--	--

The mission of SPMS, a diverse community of students, staff and families, is to empower active learners who shape their futures by developing strong academic skills and discovering their individual strengths in an emotionally supportive and engaging educational environment distinguished by:

- Caring school community that fosters meaningful relationships and emotional well-being.
- Variety of challenging and student-influenced learning opportunities
- Effective use of learning strategies that support student success.
- Safe, innovative and inspiring environments
- Collaboration among students, staff, families and communities.

SPMS Objectives

100% of Students...

- ▶ and staff feel valued
- ▶ are academically proficient
- ▶ are prepared for high school
- ▶ see relevance and take ownership in their learning
- ▶ accomplish their personal learning goals



SPMS Tactics (Action Teams)

We will:

- ensure meaningful connections between students, staff, family, and community.
- provide highly effective instruction and learning experiences.
- build an atmosphere that promotes physical, mental and emotional health.
- establish an inspiring learning environment.



Meaningful Connections

Specific Results

- Clear, consistent communication about school information to attract and support families and communities of all backgrounds.
- Authentic connections between staff, families, and students to provide collaboration among everyone as a way to express culture and personal life.
- Varied opportunities for volunteers from a wide range of backgrounds to enhance the learning of students inside Sunrise Park and out in the community.

Meaningful Connections

- ▶ Website updated monthly
- ▶ Family and staff training on various ways of communication
- ▶ Use text messaging to families
- ▶ Evaluate & improve conference procedures
- ▶ Include teacher input in parent newsletter
- ▶ Communicate procedures to new Sunrise families and students



Instruction Specific Results

- Staff consistently have ample time to collaborate and plan for authentic learning opportunities.
- Staff that supports and celebrates student achievement and makes it visible within the school.
- A rigorous, standards-based curriculum that encourages students to creatively develop their passions while realizing their individual needs.
- Students in all subjects and grades have a variety of opportunities to practice and learn real-world skills.
- An ongoing partnership with community members, local businesses, and other resources to support authentic learning experiences.
- Staff develop positive and supportive individual relationships with students.

Instruction

- ▶ Explore flexible schedules to allow for more connection time during the school day
- ▶ Opportunities for self-directed learning off-campus
- ▶ Consider passion projects/genius hour
- ▶ Explore project-based learning structures
- ▶ Explore more opportunities that are career-based



Instruction

- ▶ Time for teachers to map content curriculum across all subject areas and look for connections
- ▶ Define what rigor means for SPMS
- ▶ Strive to develop a student mindset about the joy of learning vs. academic grades
- ▶ Continuous practice of student reflection




Instruction - pending

- ▶ Common planning times
- ▶ Explore learning carousels
- ▶ Scheduling options for students to have common core teachers



Mental, Physical, Emotional Health Specific Results



- Whole School - All school staff will actively and purposefully collaborate to support and develop students social emotional learning.
 - Instruction - Teachers will prioritize the mental health of students within instructional practices.
 - Non-Classroom Spaces - Students will have access to a supported space in which they can process and reset for learning.
- 

Physical, Mental, Emotional Health

- ▶ Flowchart of the standard operating procedure for raising concerns to help students in distress
- ▶ Time for staff collaboration to develop and evaluate interventions
- ▶ Professional development:
 - Indicators of unmet social, physical and emotional needs
 - Using appropriate resources to support students



Learning Environment Specific Results

- Developmentally appropriate and flexible scheduling that optimize student learning.
- Extra-curricular activities create safe, developmental opportunities that all students can access.
- A foundation of productive partnerships with the community.
- An inclusive environment that welcomes all.
- Environments promote and social/emotional health.
- Environments promote flexibility, academic success, and student ownership.

Learning Environment

- ▶ Offer multiple options for desks/chairs in classrooms
- ▶ Paint/accessorize rooms with the best colors for learning based on research (green, yellow, off-white)
- ▶ Order more whiteboards for all classrooms for students to interact with
- ▶ Use/maintain Sunrise courtyards for a different area of learning (garden, partition, science plant studies)
- ▶ Optimize the sound quality for all learning spaces



What comes off our plate

- Building goals will relate to action steps
- PD will support building goals
- Flexible time may shift current advisory processes
- Conferences may look different
- Creation of a calming space may reorganize roles of counselor/social workers, promise fellows, focus room, special education spaces

Support needed from District

- Partnerships
- Extracurriculars
- Spaces
- Schedule

Discussion

