

Facilities Advisory Committee 2017-18

Minooka CCSD 201
April 19, 2017

Agenda for 4/19/2017

1. Overview of purpose; goals for the Committee
2. Introductions
3. Establish our Committee norms, parameters
4. Establish our calendar of meetings
5. Review current state of enrollment, facilities

1. Rationale for Facilities Planning

Current enrollment projections show that:

- By the 2017-2018 school year, Minooka Intermediate School will exceed its educational capacity (1,000 students).
- By the 2019-2020 school year, both Minooka Junior High School and Minooka Intermediate School will exceed their educational capacities.
- By the 2019-20 school year, Aux Sable Elementary and Jones Elementary Schools will exceed their educational capacities (approx 750 students)

Rationale for Facilities Planning

Bottom Line:

Minooka CCSD 201 will need to have additional educational space ready for the start of the 2019-20 school year for grades K - 8.

Planning Issues

What factors need to be accounted for?

1. How do we find space?
 - a. Build new schools
 - b. Add more space at our existing schools
 - i. Additions
 - ii. Purchase temporary classrooms
 - c. Lease existing space within district

Planning Issues

What factors need to be accounted for?

2. How do we fund the new space?
 - a. Operating funds - current budget already has deficit
 - b. New debt from referendum -
 - i. Current debt structure set to escalate
 - ii. New bonds would need voter, legislative approval

Facilities Advisory Committee:

Purpose:

- Analyze enrollment trends, current facilities
 - Current space configuration
 - Project numbers of classrooms needed
- Generate options for additional space
 - Types of space
 - Locations
- Evaluate options

Finance and Operations Committee:

Purpose:

- Review current debt schedules
- Generate options for current debt
- Generate options for additional debt - using estimates from Facilities Subcommittee
- Evaluate options

Committee will recommend:

- How much (if any) space is needed for Minooka 201 over the next five years
- Where classroom space should be located
- Characteristics of classroom, school spaces to be added

Committee will NOT recommend:

- How to fund any additional space
- Class size, educational programming
- Boundary adjustments within our district

Timelines

One option that must be considered is to go for a referendum to build additions or new schools. In order to allow for adequate construction time, the likely election would be the March 20, 2018 General Primary Election.

To ensure the Board could act upon such a recommendation from the Facilities Advisory Committee, the proposed timeline for the Committee's work uses the deadlines from the 2018 General Primary Election as an endpoint.

2. Committee Introductions

3. Establishing Group Norms

“Having a set of norms—or ground rules—that a group follows encourages behaviors that will help a group do its work and discourages behaviors that interfere with a group’s effectiveness.” (Richardson, J. 1999. From Learning Forward’s Tools for Schools. Link Below.)

[Learning Forward - Tools for Schools](#)

Establishing Group Norms

WE WILL:

- Expect a committee member to make a commitment through October 2017.
- Meet only when there is a meaningful agenda.
- Start and end on time.
- Dress comfortably.
- Have refreshments.
- Participation is a right...and a responsibility.
- Initiate ideas.
- Support...challenge...counter. Differences resolved constructively lead to creative problem solving.
- Give others a chance to talk. Silence does not always mean agreement.
- Conduct group business in front of the group.
- Conduct personal business outside of the meeting.
- Develop alternative approaches to the solution of a problem.
- Differentiate between brainstorming and discussion.
- Express disagreement with ideas, not individuals.
- Feel responsible to express differing opinions within the meeting.
- Maintain confidentiality regarding disagreements expressed during the meeting.
- Reach decisions by consensus.
- Summarize what has been accomplished.
- Make decisions for the good of the whole, not individual parts

Facilities Advisory Committee:

Facilities Subcommittee

Timeline:

April - May 2017

- 2-3 meetings a month

June - August 2017

- 1 meeting per month

September 2017

- Finalize recommendation

October 2017 (NO LATER THAN)

- Submit recommendation to Board of Education

Calendar of Meetings (Tentative)

Questions for group:

- 7 PM Start time - too late, just right?
- Any known conflicts?

April:

- April 19
- April 26

May:

- May 3
- May 11 (TH)
- May 17
- May 31

June

- June 7
- June 14 (if needed)

Break

Current Facilities

As we look at our facilities, know that there is no official capacity of each area. For our purposes, the intended capacity of a building will normally be the number of regular classrooms with an assumed 25 students per class.

Minooka Primary Center (1925)

305 W Church St, Minooka

Last addition: 2009

Houses: Minooka 201 Preschool Programs, Grundy County Preschool Program, Grundy County Special Education (GCSEC), District Office

Reg Classrooms: 17

Other spaces: 2 (Gym, Library)

East wing occupied by District Office deemed unfit for students by Regional Office.

Student Capacity*: 425

Current Enrollment: 242



Preschool classes have much smaller class size requirements. 300-350 is the most we could envision.

Minooka Elementary School (1961)

400 W Coady Dr, Minooka

Last addition: 2008

Houses: Grades K - 4, GCSEC Programs

Reg Classrooms: 30

Other Classrooms: 5

Common spaces: 4 (Gyms-2, Library, Multipurpose)

Student Capacity: 750

Current Enrollment: 590



Minooka Junior High School (1997)

335 McEvily Rd, Minooka

Last improvement: 2006

Houses: Grades 7-8

Reg Classrooms: 40

Other Classrooms: 6

Common spaces: 4 (Gyms-2, Library, Multipurpose)

Student Capacity: 1,000

Current Enrollment: 990



Walnut Trails Elementary (2004)

301 Wynstone Dr, Shorewood

Last addition: None

Houses: Grades K - 4

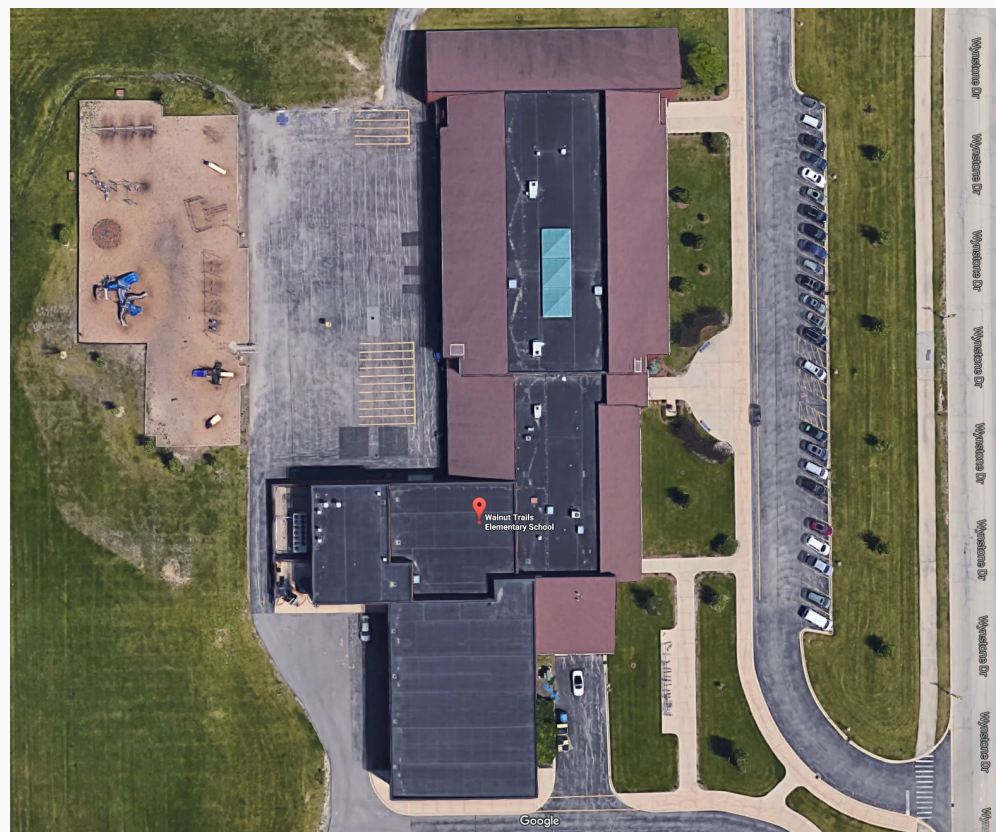
Reg Classrooms: 30

Other Classrooms: 4

Common spaces: 3 (Gym, Library, Multipurpose)

Student Capacity: 750

Current Enrollment: 576



Aux Sable Elementary (2006)

1002 Misty Creek Dr, Minooka

Last addition: None

Houses: Grades K - 4

Reg Classrooms: 30

Other Classrooms: 4

Common spaces: 3 (Gym, Library,
Multipurpose)

Student Capacity: 750

Current Enrollment: 708



Aux Sable Elementary is currently our largest elementary school in student enrollment.

Minooka Intermediate School (2009)

335 McEvily Dr, Minooka

Last addition: None

Houses: Grades 5-6, GCSEC Programs

Reg Classrooms: 36

Other Classrooms: 13 (Many Special Education Classrooms that are approx 50-66% of regular size)

Common spaces: 4 (Gyms-2, Library, Multipurpose)

Student Capacity: 900 (1,000 is our assumed capacity due to the teaming of 6th grade)

Current Enrollment: 944



Jones Elementary School (2009)

800 Barberry Way, Joliet

Last addition: None

Houses: Grades K - 4, GCSEC Programs

Reg Classrooms: 30

Other Classrooms: 4

Common spaces: 3 (Gym, Library, Multipurpose)

Student Capacity: 750

Current Enrollment: 627



Jones is our fastest growing school as many of our Joliet subdivisions have continued to thrive.

K-8 Capacity vs Enrollment, Current (No MPC)

Total Capacity, K-4 - 3,000

- AUX - 750
- MES - 750
- JES - 750
- WTES - 750

Total Capacity, 5-8 - 2,000

- MIS - 1,000
- MJHS - 1,000

Total Enrollment, K-4 - 2,501

- AUX - 708
- MES - 590
- JES - 627
- WTES - 576

Total Enrollment, 5-8 - 1,934

- MIS - 944
- MJHS - 990

NOTE: Grundy County Special Education Classrooms also take up classroom space at JES, WTES, MIS and MJHS

66

Remaining Capacity with our current 5-8 configuration

Enrollment Projections

Cohort Retention Method:

The most recognized method for projecting enrollment shifts is called Cohort Retention. This method tracks grade level cohorts and measures the rate at which they fluctuate from year to year. This rate, or rates if multiple years are tracked, are applied to our enrollments going forward.

For example, if 100 1st graders in 2015-16 grew to 110 2nd graders in 2016-17, the rate would be 1.1. For Minooka 201, a 2 year average rate has been the best predictor over the past few years.

Buildings projected to exceed capacity within five years

Aux Sable Elementary - Projected enrollment of 754 in 2018-19 (750 cap)

Jones Elementary - Projection of 802 by 2019-20 (750 cap)

Minooka Intermediate - Projection of 1,059 by 2017-18 (1,000 cap)

Minooka Junior High - Projection of 1,112 by 2019-20 (1,000 cap)

District wide - Projected enrollment of 5,227 by 2019-20 (5,000 cap)

Rationale for Facilities Planning - again

Bottom Line:

Minooka CCSD 201 will need to have additional educational space ready for the start of the 2019-20 school year for grades K - 8.

Next meeting - April 26, 2017

- Recap information from 4/19/17
 - More info needed? Explore other projection methods?
- Explore current developments within Minooka 201 boundaries
- Create consensus on enrollment projections, classroom needs
- Explore options for creating new classroom space

Minooka CCSD 201 Facilities Advisory Committee

April 19, 2017