



B.M.C. DURFEE HIGH SCHOOL FALL RIVER, MA

NEWSLETTER

April 18, 2019 - Issue 9

A Building is only as **STRONG** as its **FOUNDATION**

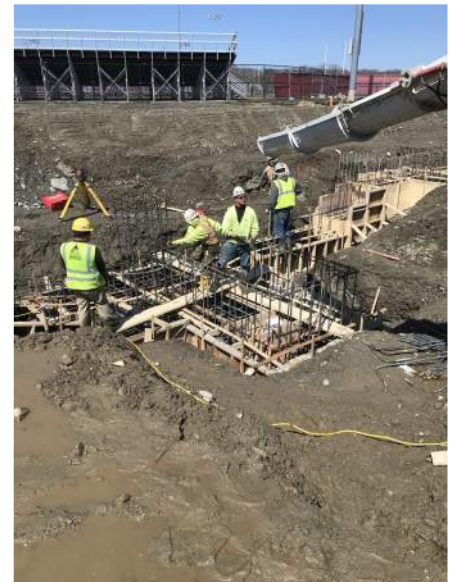
March and April have been months of forming, reinforcing steel, and concrete. J.L. Marshall Concrete has been working diligently towards placing concrete foundations for the new building. Construction activities are progressing from South to North for foundation and steel erection (working away from the Athletic Building)

To date we have placed just over 400 yards of concrete!

Other completed work includes - the large exterior grease trap for the commercial cooking kitchen. The underground Plumbing and Electrical Work within the footprint of the building is scheduled to start the end of this month. Additionally, N-Grid has also been on-site pulling primary electrical lines to the new buildings transformer.

Over the next few months the team is working toward putting concrete in the ground with a grand focus on structural steel arriving in July.

Once school commences for summer- break Suffolk and the Design Team will be mobilizing in the Athletic Building to start the phased renovation scope.



A couple of quick statistics for the Project:
- 11,200 Total Yards of Concrete
- 280 Tons of Reinforcing Steel (Rebar)
- 25,000 Total Man-hours for Concrete

Please pardon our appearance and any noise disruption during construction. We appreciate your continued patience and cooperation.

Questions or concerns? Please contact:

Adam Keane, LeftField, AKeane@leftfieldpm.com 617.593.9539



build smart