



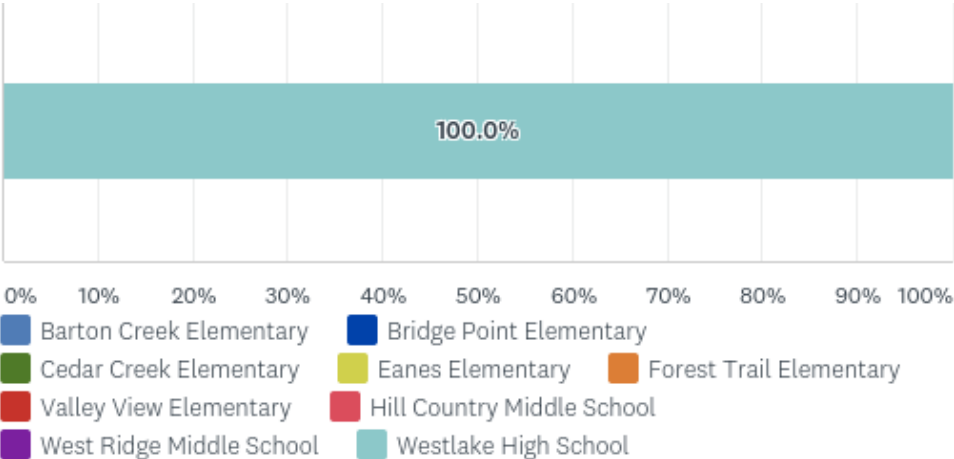
Parent Climate Survey

February 2018

811 Total Responses

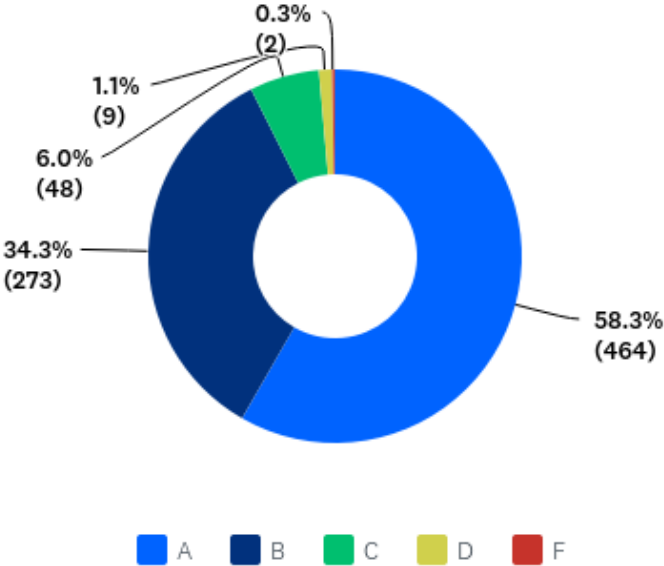
What school does your child attend?

Answered: 811 Skipped: 0



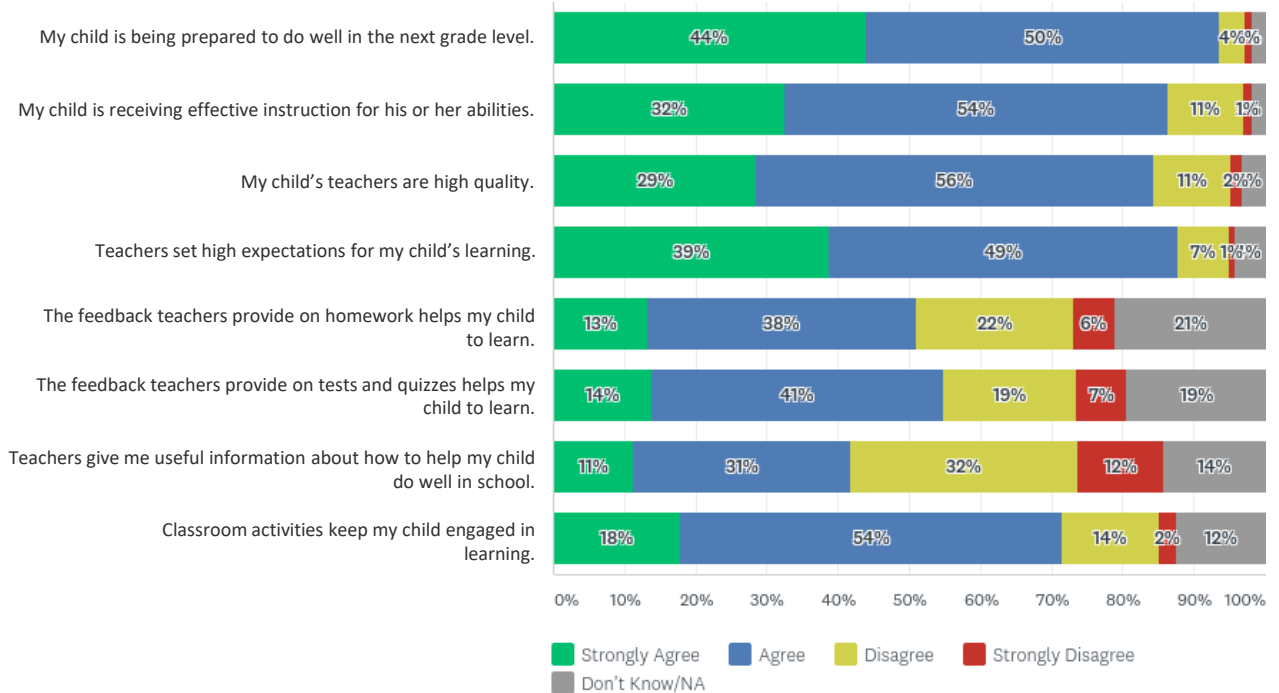
What grade would you give your school for how well it is educating your child? Please tell us what rating you would give the quality of your child’s school. On this scale, “A” represents outstanding, “C” is average and “F” is failing.

Answered: 796 Skipped: 15



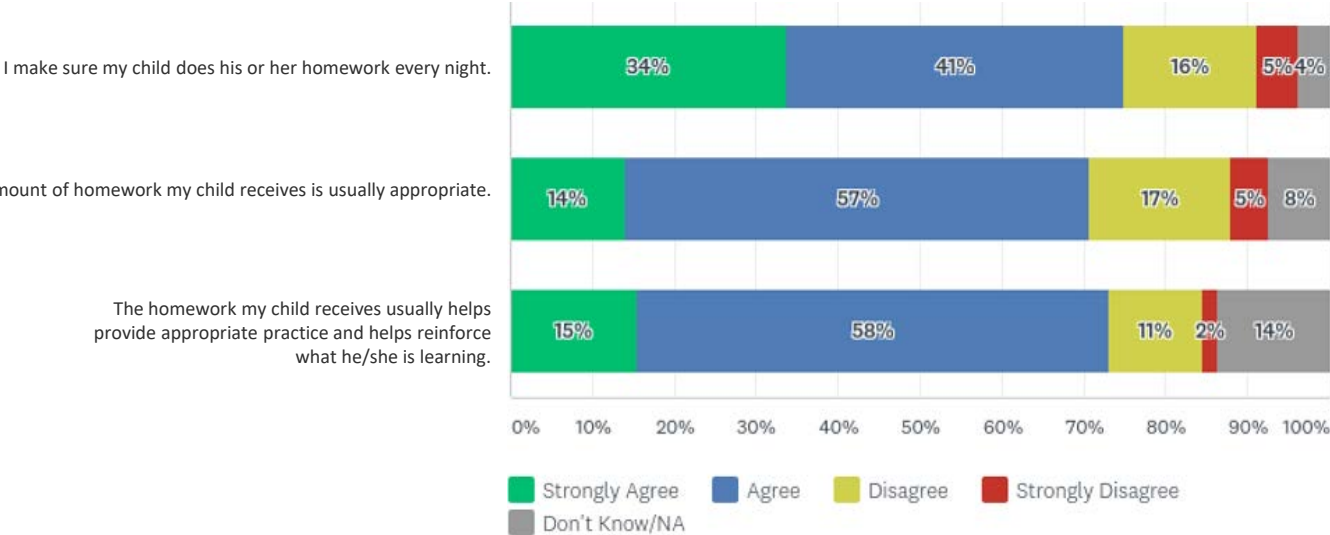
Academic Preparation

Answered: 755 Skipped: 56



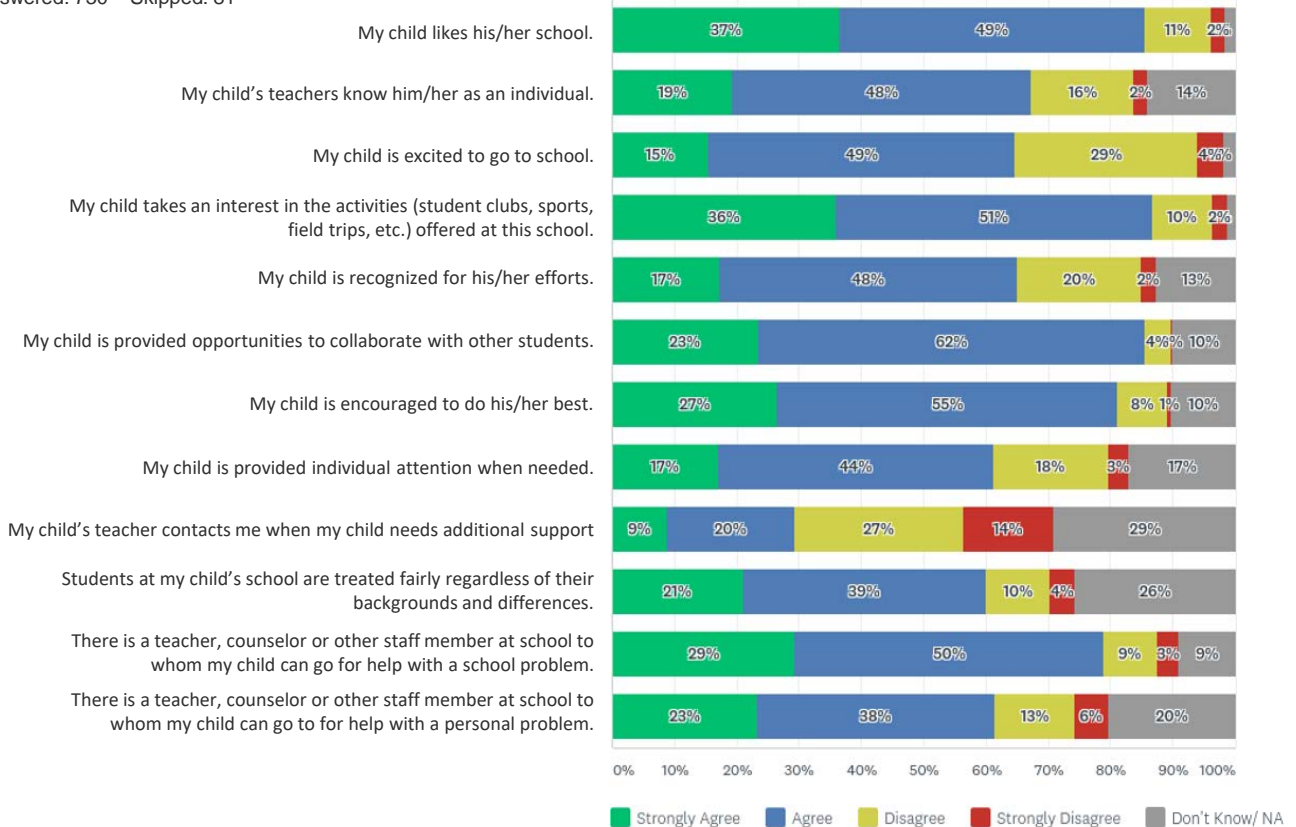
Homework

Answered: 743 Skipped: 68



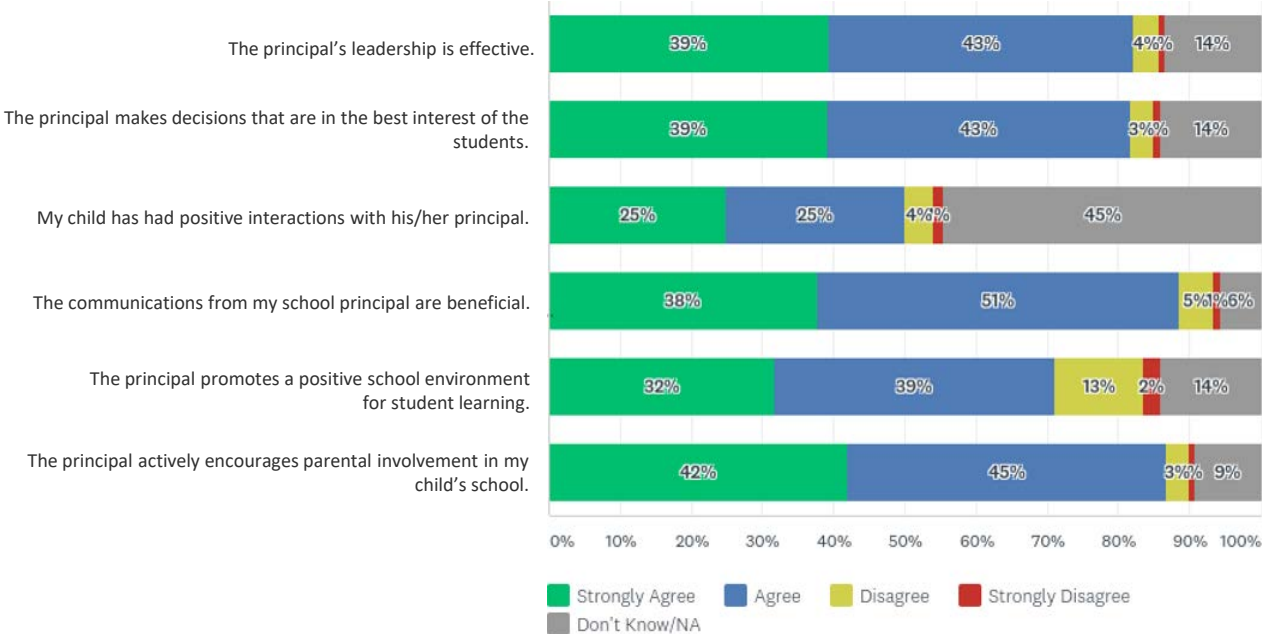
Student Support

Answered: 730 Skipped: 81



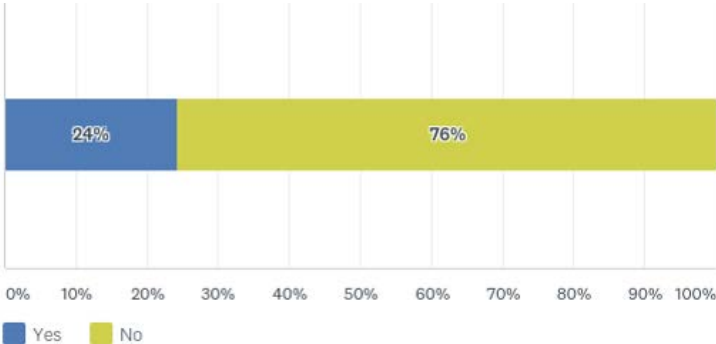
School Leadership

Answered: 723 Skipped: 88



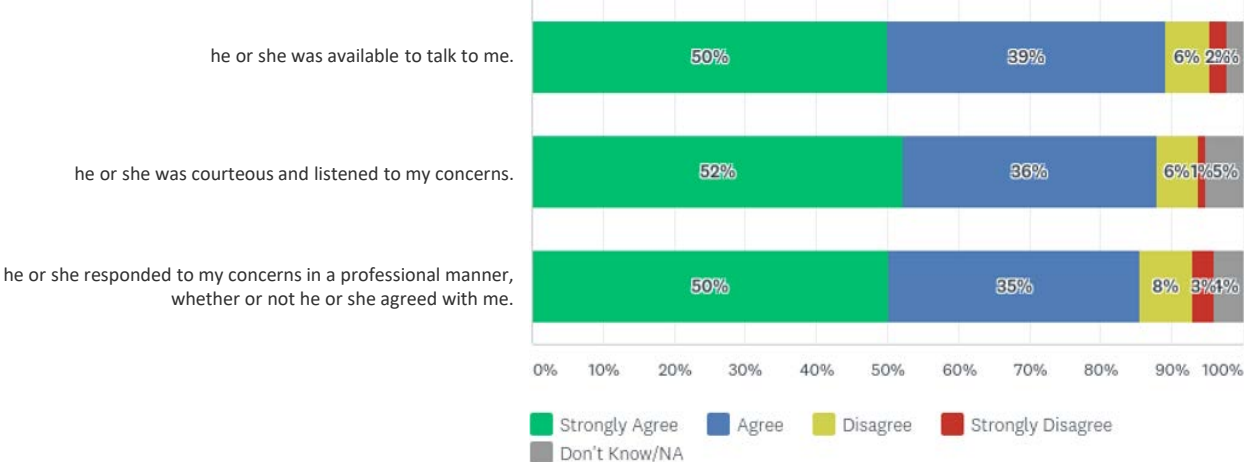
Have you had an issue to discuss with the principal or assistant principal this year?

Answered: 713 Skipped: 98



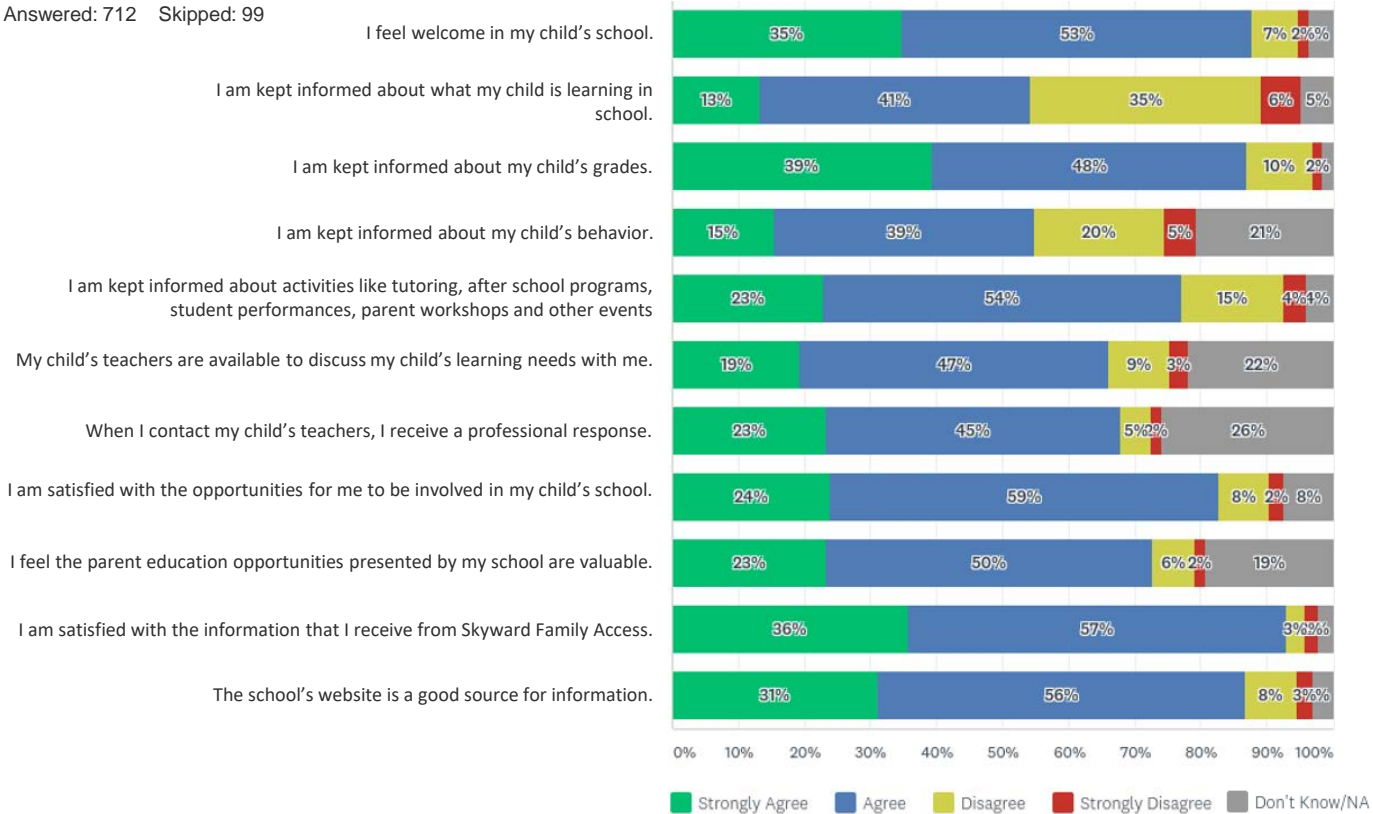
When I have had an issue to discuss with the principal or assistant principal he or she . . .

Answered: 174 Skipped: 637



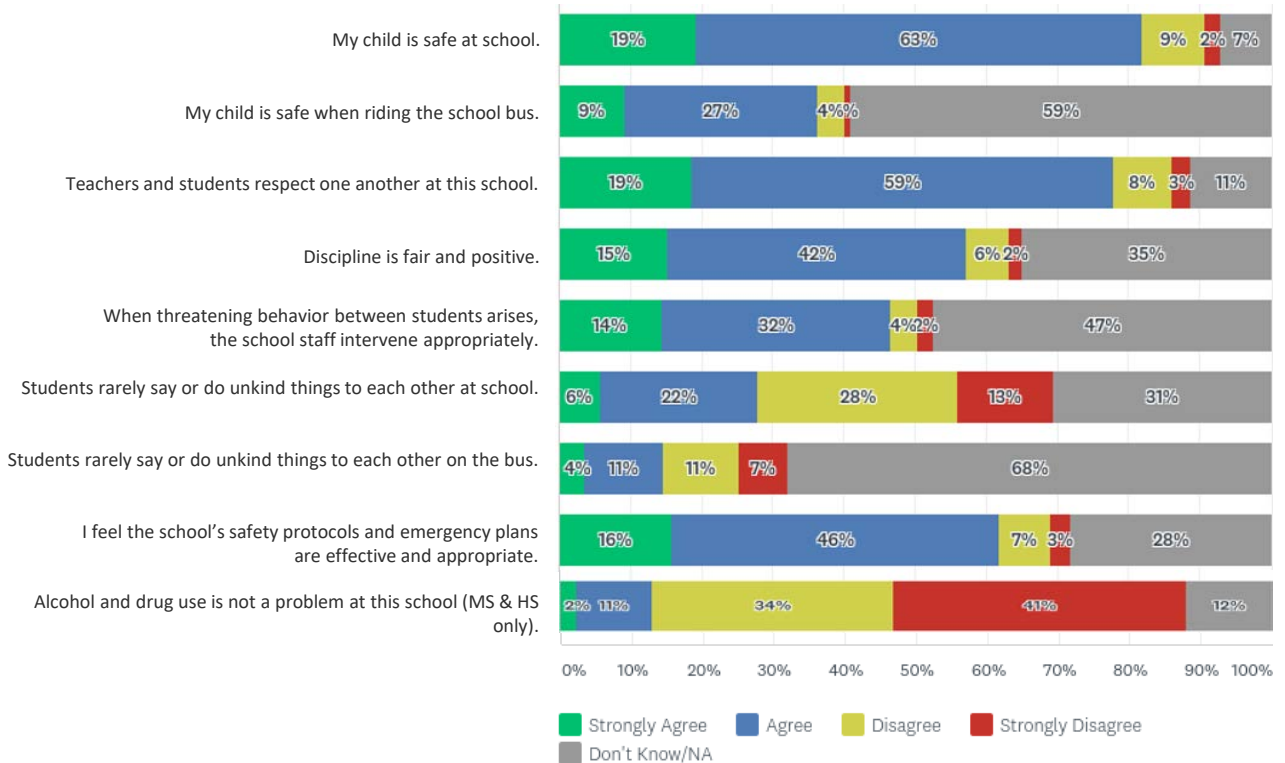
Parent Engagement

Answered: 712 Skipped: 99



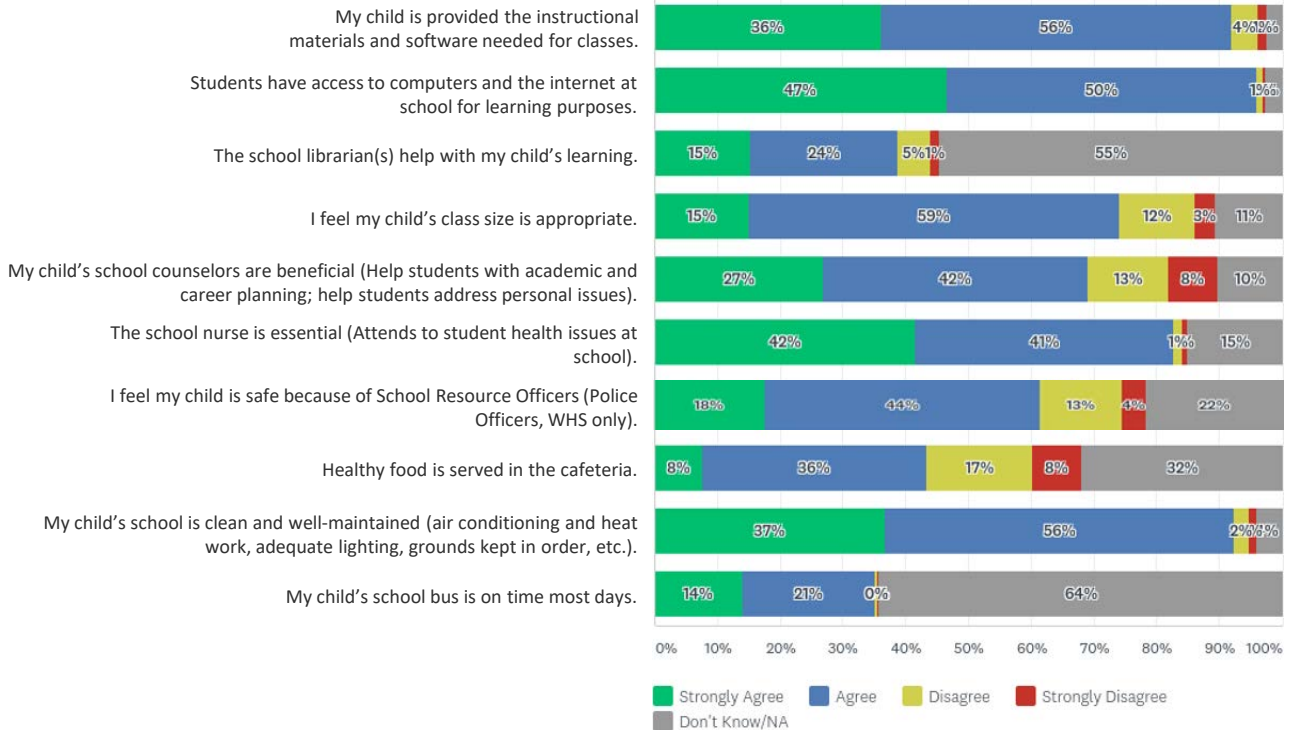
Safety and Behavior

Answered: 708 Skipped: 103



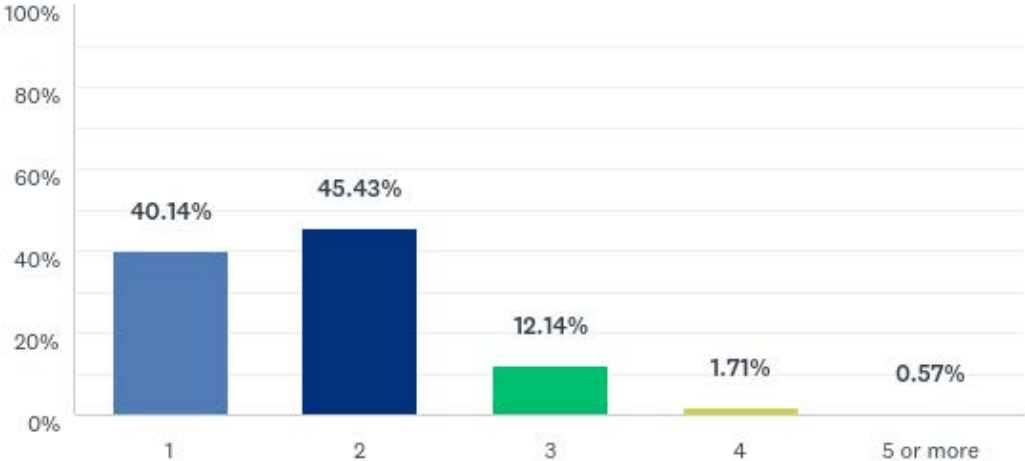
School Operations

Answered: 704 Skipped: 107



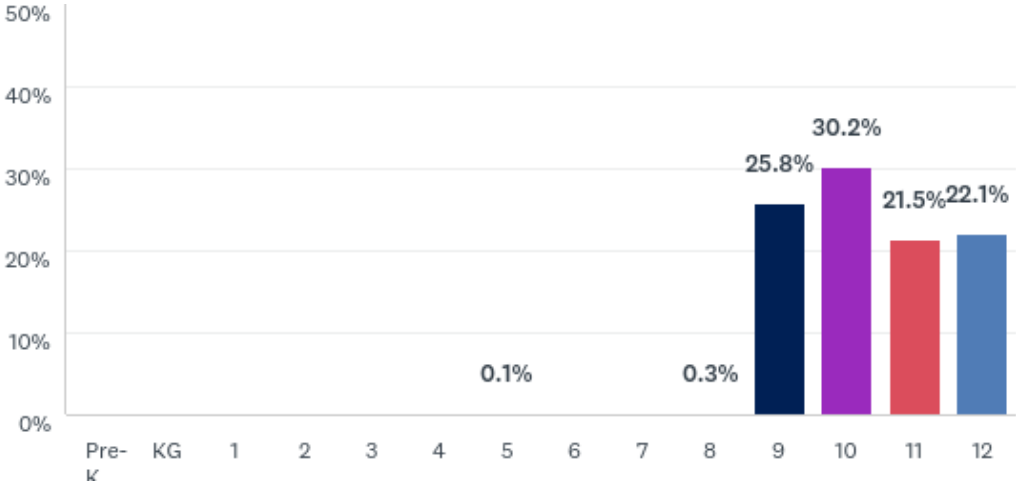
How many children do you have attending a district school?

Answered: 700 Skipped: 111



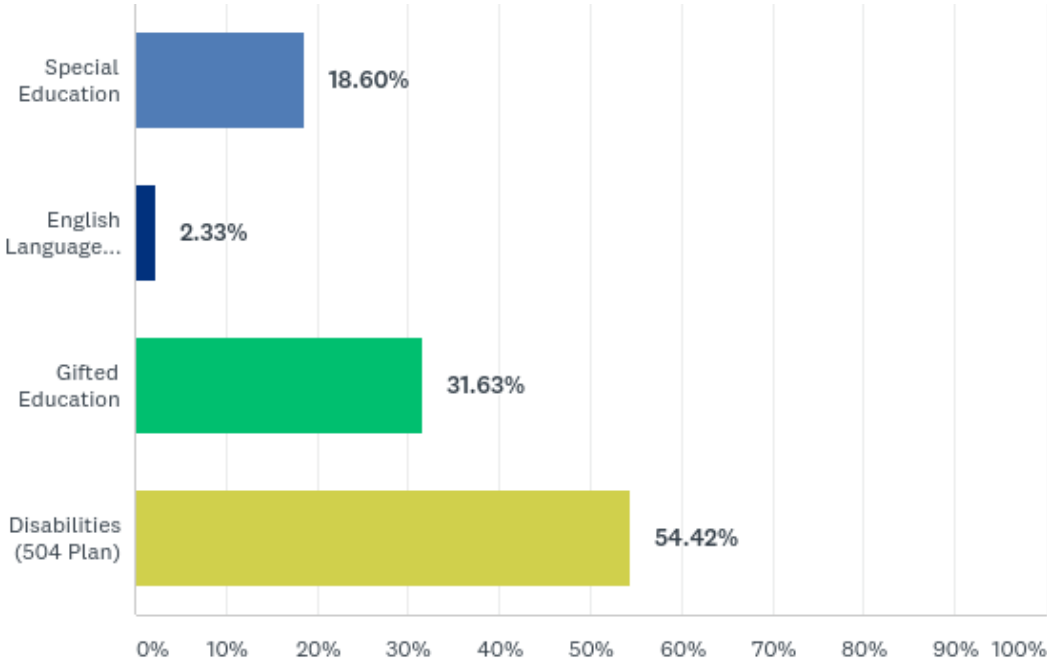
Please indicate the grade level of the child for whom you are responding.

Answered: 698 Skipped: 113



Does your child receive any of the following services at this school?

Answered: 215 Skipped: 596



What are the best ways for the school to communicate with you about your child's education?

Answered: 700 Skipped: 111

