



# ORANGE UNIFIED SCHOOL DISTRICT

## Measure S Bond Program

### January 2019 Monthly Progress Report



**PERIOD COVERED:**

January 1-31, 2019

**FISCAL YEAR**

FY 2018-2019

**PROGRESS REPORT NO.**

PR-019-1819-019

**PREPARED BY:**

**CUMMING**  
Building Value Through Expertise



## TABLE OF CONTENTS

### **1.0 Executive Summary**

- 1.1 Program Summary
- 1.2 Program Highlights/Key Milestones
- 1.3 Look Ahead (next 90 days)

### **2.0 Project Status Report**

Canyon HS – Science Center  
El Modena HS – Science Center  
Orange HS – Utility Infrastructure (Increment # 1)  
Orange HS – Science Center (Increment # 2)  
Villa Park HS – Interim Housing & Science Center

### **3.0 Financial Report**

- 3.1 Project Cost Estimate
  - Budget vs Actuals with Vendor details per High School
- 3.2 Cash Flow Projections

### **4.0 Program Schedule Summary**



## 1.0 EXECUTIVE SUMMARY

### 1.1 Program Summary

DSA approval has been received as follows:

- [\(Completed\) January 31, 2019](#) - Canyon HS Science Center (04-117300)
- (Completed) November 6, 2018 - El Modena HS Science Center (04-117098)
- (Completed) August 16, 2018 - Villa Park HS Science Center (04-117022)
- (Completed) July 12, 2018 - Orange HS Science Center (Increment # 2) (04-116859)
- (Completed) April 10, 2018 - Orange HS Increment # 1 (Satellite Kitchen) (04-116673.2)
- (Completed) March 1, 2018 - Orange HS Increment #1 (Infrastructure Upgrades, Move Relocatable Buildings, Bus Drop-Off, Restroom Renovation Project) (04-116673.1)
- (Completed) February 7, 2018 - Villa Park HS Interim Housing (DSA Application #04-116788)

Construction start and tentative scheduled starts, as follows:

- Tentative start set for February 18, 2019 – Orange HS Science Center (Increment #2) Date change reflects a 60-day delay due to cancelling of bid and re-bid timeframes.
- Tentative start set for April 2019 – El Modena HS Science Center
- Tentative start set for May 2019 – Canyon HS Science Center
- [\(Construction Start\) January 7, 2019](#) – Villa Park HS Science Center (both Interim Housing and Science Center) Date reflects a 30-day delay due to an added traffic design to the bid package.
- [\(Construction Start\)](#) June 15, 2018 – Orange HS Site Infrastructure (Increment #1)

### 1.2 Program Highlights/Key Milestones

#### January 17<sup>th</sup> Approved Board of Education Items

- January 17, 2019, the Board approved, Orange HS Increment # 01; Change Order # 4 in the amount of: \$161,049.42. This change order is comprised of the following proposed change order's (PCO): 17, 18, 20, 21, 24, 26, and 33, reflecting; 8.31% of the 10% (\$596,542) change order contingency.
- January 17, 2019, the Board approved, Orange HS Increment # 01; Change Order # 3 in the amount of: \$33,874.56. This change order is comprised of the following proposed change order's (PCO): 8, 9, and 12.
- January 17, 2019, the Board approved, Orange HS Increment # 01; Change Order # 2 in the amount of: \$42,086.09. This change order is comprised of the following proposed change order's (PCO): 13, 14, 15, and 16.



---

### **Program Budget Update**

- The December 2018 Monthly Report was issued. The budgets are based upon the 95% Construction Documents Cost Estimates completed by the Construction Managers (updated from the Construction Cost Estimates based upon the Construction Document Designs).

### **Program Schedule Update**

- The December 2018 Monthly Report was issued. The program schedule is based upon the updated schedules completed by the Construction Managers using the various stages of Construction Documents progress.

### **Phase II Update**

- On 1/23/19, held the next planning meeting with the design team and school staff for El Modena HS.
- On 12/13/18, three (3) contract amendments were approved for Harley Ellis Devereaux (HED) at El Modena High School, LPA at Villa Park HS and Lionakis at Orange HS, each to provide the conceptual design needed to get design approval from the stakeholders.
- Awaiting proposal from gkkworks / Cannon Design Architect on the formulation of a “Basis of Design” package for use in the District meetings to finalize the Phase II design for Canyon High School.

### **California Environmental Quality Act (CEQA) Compliance:**

- Villa Park HS – Notice of Exemption (Board approved on 9/20/18).
- Canyon HS – Notice of Exemption (Board approved on 7/26/18).
- Orange HS – Notice of Exemption (Board approved on 3/8/18).
- El Modena HS – Notice of Exemption (Board approved on 3/8/18).

### **Procure Electrical System Equipment**

- As of 1/8/19, the owner furnished (OFCl) electrical equipment revisions for Canyon HS were made by ACCO and re-submitted back to the Architect for final approval.
- On 12/7/18, all the (OFCl) electrical equipment was received and stored in the Warehouse for future Orange HS Science Center contractor pickup and install.
- On 11/13/18, completed the OFCl electrical equipment for Orange HS Increment # 1.
- On 10/11/18, the Board approved the use of CMAS Master Contract Nos. 4-18-51-0061A (B & C) for the purchase of Owner Furnished Contractor Installed (OFCl) Electrical System Equipment for the Villa Park HS STEM Building (Increments #1 & #2), in the amount of \$181,447.56, with an estimated savings of; \$29,939 (using 16.5% GC markup cost).

### **Citizens’ Oversight Committee (COC)**

- On 1/23/19, Scott Harvey and David Rivera presented an updated Measure S Bond Program Status presentation and a Measure S Financial update to the COC. The next meeting # 9 is scheduled for February 20, 2019.

*COC Meeting agendas, meeting minutes, reports, and additional information can be found at;*  
<https://www.orangeusd.org/measure-s/citizens-oversight-committee>



### **Program Management Plan (PMP)**

- The PMP version 2 revisions were presented to the District during the week of 11/12/18. The final review with the District was 1/25/19 and accepted.
  - The PMP version 2 will be published and launched on the Procore foundation for the Measure S bond teams. This update will consist of several revisions and additions, some of which are briefly outlined here:
    - Revisions include; Signature Page and Construction Management Plans by CMs, updated project highlight summary, Procore process information outlined, public bid procedures, and more.
    - New Additions include; Full Appendix listing, Lesson Learned Bulletin's, Procore Workflow, Commissioning information, Formal Bidding procedures and samples, Program Cost Saving measures, Financial reports and more.

### **Contractor Pre-Qualification**

- Prequalification activity for El Modena HS Science Center pursuant to the current bid;
  - 9 Prime Contractors are eligible to bid S1819-005 EMHS Sci Center – attended mandatory job walk and prequalified with audited financials and sufficient single bonding capacity.
- As of 11/21/18, current contractor prequalification includes:
  - 24 Prime/GC's – 17 large Prime Contractors are included in this category and able to financially qualify and perform at the level required to bid the large projects at the high schools.
  - There are currently 124 Mechanical / Electrical / Plumbing contractors' (there were 36 MEP's added during the Orange HS Science Center outreach for S1819-001).
  - To date, two marketing efforts for Measure S Program projects included invitations to 382 contractors and 5 plan rooms. Refer to the reoccurring marketing of projects;
  - Each project advertised for bidding will include extensive marketing efforts to maintain a large pool of qualified contractors able to bid Measure S Program projects.
  - Projects are posted to American Reprographics Company (ARC) public plan room, which a large well-known plan room and heavily utilized by school districts for posting of bids.
  - Project general information and a link to ARC is also posted on the District's website, under the Measure S Program.
- Prospective contractors continue to submit pre-qualification applications, which continue to be reviewed by the District and the Program Manager on a rolling basis.



---

### **Project Achievements**

- December 28, 2018 – A Notice to Proceed was issued to Angeles Contractor for the Interim Housing and Science Center project, reflecting a 01/07/19 start date.
- December 13, 2018, the Board approved the Construction Management Master Agreement Amendment # 2 for Balfour Beatty in order to clarify Master Agreement language in terms of the onsite construction trailer rental for the Balfour Beatty staff and the District Inspector of Record offices, which allows for the trailer rental to be removed as a contract deliverable (Exhibit E, Item 114) and submitted as a reimbursable cost under the current contract language previously approved in Amendment #1, there is no fiscal impact.
- December 13, 2018, the Board approved the Construction Management Master Agreement Amendment # 2 for Gafcon. The proposed amendment transfers the responsibility to provide offices for the construction management staff and Inspector of Record to the awarded contractor for the science center project and will be included in the hard cost construction bid, there is no fiscal impact.
- December 13, 2018, the Board approved the Construction Management Master Agreement Amendment # 2 for Cordoba. The proposed amendment transfers the responsibility to provide offices for the construction management staff and Inspector of Record to the awarded contractor for the science center project and will be included in the hard cost construction bid, there is no fiscal impact.
- December 13, 2018, the Board approved Pinner Construction for the Orange HS – Science Center project (Increment # 2) project, Bid No. S1819-003 Orange High School Science Center at \$26,109,000. This bid is within the estimated budget for this project.
- December 13, 2018, the Board approved Angeles Contractor as the responsive responsible bid for the Villa Park HS – Interim Housing & Science Center project, Bid No. S1819-002 Villa Park High School Interim Housing - Science Center, at \$23,997,000. This bid is within the estimated budget for this project.
- December 13, 2018, the Board approved contract amendment # 1 for P2S to conduct commissioning for the following systems in the Satellite Kitchen at Orange HS – Increment # 1; Split System Indoor Fan Coil Unit (x2); <sup>2</sup> Split System Outdoor Heat Pump (x2); <sup>3</sup> Exhaust Fan (x1), in the amount of \$4,755.
- On December 13, 2018, the Board approved contract amendment # 3 for Harley Ellis Devereaux (HED) to provide architectural and engineering services for Measure S projects at El Modena High School. To provide conceptual “basis of design” Phase 2 drawings / renderings for a fee of \$28,560. An additional amount of \$2,000 is being added to cover reimbursable costs and contingency for a total authorization of \$30,560.



- On December 13, 2018, the Board approved contract amendment # 3 for LPA, Inc. to provide architectural and engineering services for Measure S projects at Villa Park High School. To provide conceptual “basis of design” Phase 2 drawings/renderings for a fee of \$76,000. An additional amount of \$1,000 is being added to cover reimbursable costs and contingency for a total authorization of \$77,000.
- On December 13, 2018, the Board approved contract amendment # 3 for Lionakis to provide bidding services for the re-bid of Orange HS Science Center (S1819-003). Services include; architectural, interior design, structural engineering, electrical / low voltage, engineering, mechanical engineering, landscape architect. Assumes the same DSA approved plans and specifications used in the original bid package, along with approved addenda, will be used for re-bidding the project, in the amount of \$18,700.

### 1.3 Look Ahead (next 90 days)

#### Board of Education Agenda

##### **February 12<sup>th</sup> Tentative Items:**

- Recommended approval to award of a contract to Elite Modular Leasing & Sales, Inc., for the delivery, installation, lease, dismantle, and removal, and required related services, for a portable modular building to be used for an interim student food services location, at Canyon HS Science Center, in the amount of \$125,487 for a two (2) year lease term. An additional amount of \$18,823 (15%) is being added as contingency for a total cost of \$144,310, pursuant to the contract awarded by the Savanna School District.

#### Program Wide

- El Modena HS Science Center – The City of Orange Fire Water plan check comments to be reviewed by the Architect.
- El Modena HS Science Center – The bid closes on February 21, 2019. Prepare to recommend award the responsive and responsible low bid general contractor at the March 14, 2019 Board of Education meeting.
- Program Management Plan – Finalize version 2 with the District. Submit the newly updated version 2, to all the Measure S project management teams.
- Canyon HS Science Center – The City of Anaheim plan check comments to be reviewed by the Architect.
- Orange HS Increment # 1 – Swinerton is preparing for substantial completion and close out of the project based on February 28, 2019 completion date.





- Canyon HS Science Center – The bid package S1819-006 for (DSA Application #04-117300) is being prepared to advertise on February 21, 2019, with a mandatory pre-bid walk to be scheduled for March 1, 2019.
- Canyon HS Science Center – Request for Proposal outreach to the IOR /LOR prequalified eligibility list to establish Inspector and Lab of Record services for.
- Orange HS Science Center (Increment # 2) – Pinner Construction Inc. will be mobilizing on site preparing for a February 28, 2019 construction start. Swinerton will be removing their construction trailer off-site during the weekend of February 15, 2019.
- Canyon HS Science Center – Establish the modular contract for the Satellite Kitchen.
- Villa Park HS Interim Housing & Science Center – Angeles Contracting (ACI) and Elite Modular will meet to discuss the interim housing portable transportation onto the site and set up.
- Villa Park HS Interim Housing & Science Center – Angeles Contracting and ACCO (Owner Furnished electrical equipment supplier) will meet to discuss the delivery and logistics of the electrical switchgear equipment that will be needed to power the ten (10) interim housing modular units.
- Canyon HS Science Center – Conduct a Phase I hazardous material assessment for the upcoming building demolition areas for this project, with the successful proposer. Prepare the specification and abatement monitoring, if needed.
- Canyon HS Science Center – Senior Executive Director to finalize Phase II, "Conceptual Design" pricing with gkkworks/Cannon Design, Architect and submit for Board approval to execute agreements and start design.
- Canyon HS Science Center – Secure Architect / Engineer approval of the Owner Furnished / Contractor Installed (OFCI), electrical equipment list. Prepare the California Multiple Award Schedule (CMAS) contract to furnish this electrical equipment for Canyon HS.
- Complete the Weekly Briefing, Monthly Program Status Reports and Weekly updates.





## 2.0 PROJECT STATUS REPORT



Canyon High School  
New STEM Building

CANYON HIGH SCHOOL



EL MODENA SCIENCE CENTER

Overall View

HED



Orange High School Science Center





## CANYON HS SCIENCE CENTER

- |  |  |
|--|--|
| <ul style="list-style-type: none"><li>• 12 Laboratory Rooms</li><li>• 12 General Classrooms</li><li>• Student Services</li><li>• New Food Services</li></ul> | <ul style="list-style-type: none"><li>• New Multi-Purpose Room Entry</li><li>• Parking Lot Improvements</li><li>• Infrastructure Upgrade and Improvements</li><li>• Landscape Improvements</li></ul> |
|--|--|

### Project Update (Design):

- As of 1/31/19 the DSA Review & Approval phase was APPROVED for the STEM Building (DSA Application #04-117300).
- As of 1/15/19, the County of Orange, Health Department started review of the modular kitchen. The Architect anticipates comments back by 2/8/19.
- As of 1/8/19, the owner furnished (OFCI) electrical equipment revisions were made by ACCO and re-submitted back to the Architect for final approval.
- As of 12/28/18, the Architect issued plans to the City of Anaheim Water Department and Off-Site improvement plan for review.
- As of 12/28/18, the Architect issued plan to the County of Orange, Health Department, to start the review of the modular kitchen.
- Establish outreach for the specialize modular contract for the Modular Kitchen.
- Selection pending on the Phase I hazardous material contractor outreach for the assessment, spec preparation and abatement monitoring (if needed) for the upcoming demolition areas, Building A (Existing Admin Building) and Building H (existing MPR and Kitchen).
- Construction is tentatively scheduled to start in May 2019 to include all construction.

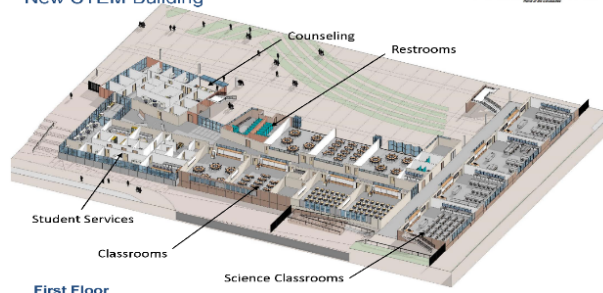
Canyon High School  
New STEM Building



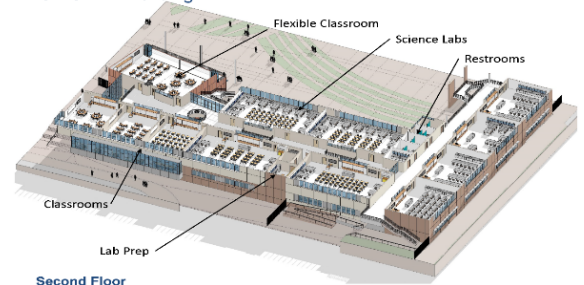
Canyon High School



Canyon High School  
New STEM Building



Canyon High School  
New STEM Building







## EL MODENA HS SCIENCE CENTER

- |   |  |
|---|--|
| <ul style="list-style-type: none"><li>• 12 Laboratory Rooms</li><li>• 1 General Classrooms</li><li>• 2 Medically Fragile Classrooms</li></ul> | <ul style="list-style-type: none"><li>• Relocation of Campus MDF</li><li>• Technology &amp; Utility Upgrade</li><li>• Landscape Improvements</li></ul> |
|---|--|

### Project Update (Bid & Award):

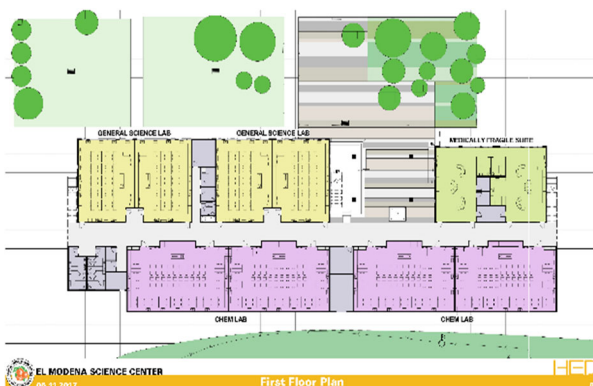
- On 1/25/19, a mandatory pre-bid walk was held at El Modena HS and nine (9) prime contractors attended.
- On 1/18/19, the El Modena HS Science Center bid S1819-005 bid documents and addendum # 1 was advertised.
  - On 1/10/19 the legal notice was submitted prior to bid.
- As of 12/19/18, the City of Orange Fire Water plan check has comments that will be distributed by the Architect to the project team for review.
- Construction is tentatively scheduled to start in April 2019 to include all construction (STEM Building, Medically Fragile Classrooms, Site Infrastructure, New Fire Lanes, New Parking Lot Lighting).

EL MODENA SCIENCE CENTER  
05.11.2017

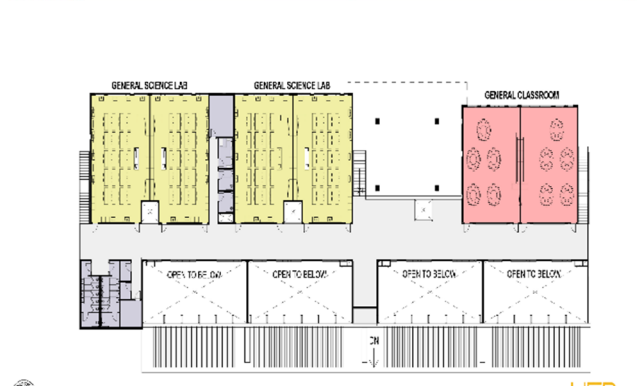
Overall View

EL MODENA SCIENCE CENTER  
05.11.2017

Site Aerial Diagram

EL MODENA SCIENCE CENTER  
05.11.2017

First Floor Plan

EL MODENA SCIENCE CENTER  
05.11.2017

Second Floor Plan



## ORANGE HS UTILITY INFRASTRUCTURE

- Site Utility & Infrastructure Upgrade
  - Satellite Kitchen
  - Electrical Utility Yard
- Relocate (5) and Demolish (4) of portable classroom buildings

### Project Update Increment # 1 – Site Utility Infrastructure (**Construction**):

- On 1/17/19 the Board of Education approved Orange HS Increment # 01; Change Order # 4 in the amount of: \$161,049.42.
  - After the approval of this change order, it will reflect; 8.31% of the 10% (\$596,542) change order contingency.
- On 1/17/19 the Board approved Orange HS Increment # 01; Change Order # 3 in the amount of: \$33,874.56.
- On 1/17/19 the Board approved Orange HS Increment # 01; Change Order # 2 in the amount of: \$42,086.09.
- The Girls (and Boys) restroom was completed and will be turned over for School use on Monday, 01/07/18.
- The Electric Yard building foundation and masonry wall complete.
- On 11/13/18, the MSA-1 switchgear and five other pieces of (OFCI) electrical equipment was picked up by the Contractor (Swinerton) and transported to the construction site for installation. This completed the OFCI Increment # 1 electrical equipment.

[See Construction Photo's below:](#)



New Satellite Kitchen equipment being set in place.



New custom wrought iron fencing being set in place around the new electric yard (off Schaffer).



Exterior site lighting around the new electric yard.





## ORANGE HS SCIENCE CENTER

- 12 Laboratory Rooms
- 1 General Classrooms

- New Panther Pavilion Plaza
- 2 Medically Fragile Classrooms

### Project Update Increment # 2 – Science Center (**Construction**):

- As of 1/28/19, Pinner has submitted their baseline schedule for initial review.
- On 1/16/19, there was a kick-off meeting held with Pinner Construction and the project team to talk about construction start mobilization.
- On 1/7/19, a Notice to Proceed was issued to Pinner Construction Co. reflecting a 02/18/19 start date.
- On 12/13/18, the Board approved Pinner Construction as the responsive responsible bid for the Orange HS – Science Center project (Increment # 2), Bid No. S1819-003 Orange High School Science Center, at \$26,109,000. This bid is within the estimated budget for this project.



Orange High School Science Center



Orange High School Science Center



Science Center Second Floor Plan



Science Center Ground Floor Plan





## VILLA PARK HS SCIENCE CENTER

- |   |  |
|---|--|
| <ul style="list-style-type: none"><li>• 12 Laboratory Rooms</li><li>• 2 General Classrooms</li><li>• 2 Medically Fragile Classrooms</li></ul> | <ul style="list-style-type: none"><li>• Demolish existing building 300</li><li>• Install 10 New Portable Buildings</li></ul> |
|---|--|

### Project Update ([Construction](#)):

- On 1/29/19, construction meeting was held with Angeles Contractor Inc. (ACI) and Elite Modular to discuss the interim housing portable transportation and logistics onto the site and set up.
- On 1/29/19, a meeting was held with ACCO and ACI to discuss the delivery and logistics of the electrical switchgear equipment that will be needed to power the ten (10) interim housing modular units.
- On 1/22/19, the regular weekly construction meeting was held with ACI at the Villa Park Library. ACI is getting the construction site trailer ready to occupy.
- The groundbreaking ceremony was held on Saturday, January 12, 2019, mid-day.
- On 1/7/19, Angeles Contractor, Inc. (ACI) started on site construction based on Notice to Proceed dated 12/28/18.

[See Construction Photo's below:](#)



Existing power where the new switchgear will be tie-in to supply power for the (10) Interim Housing modular units.



Looking South from the existing switchgear to the baseball field, where the power will be run for the ten modular units.

### 3.0 FINANCIAL REPORT



#### 3.1 Project Cost Estimate - Summary

##### Measure S Bond Program Financial Report for January 2019

|                               | Budget               | Contracted to Date  | Expended to Date    | Quarterly Expense<br>Oct '18 - Dec '18 | % Expended |
|-------------------------------|----------------------|---------------------|---------------------|--|------------|
| <b>PROGRAM</b>                |                      |                     |                     |  |            |
| Phase 1 - HS Science Center   | \$207,845,399        | \$29,646,514        | \$17,659,459        | \$1,041,593                            | 8%         |
| Phase 2                       | \$80,154,601         | \$304,257           | \$295,529           | \$0                                    | 0%         |
| <b>Total</b>                  | <b>\$288,000,000</b> | <b>\$29,950,772</b> | <b>\$17,954,987</b> | <b>\$1,041,593</b>                     | <b>6%</b>  |
| <b>Canyon High School</b>     |                      |                     |                     |  |            |
| Phase 1 - HS Science Center   | \$69,500,000         | \$7,361,241         | \$3,870,356         | \$50,053                               | 6%         |
| Phase 2                       | \$2,500,000          | \$54,593            | \$53,684            | \$0                                    | 2%         |
| <b>Total</b>                  | <b>\$72,000,000</b>  | <b>\$7,415,833</b>  | <b>\$3,924,040</b>  | <b>\$50,053</b>                        | <b>5%</b>  |
| <b>El Modena High School</b>  |                      |                     |                     |  |            |
| Phase 1 - HS Science Center   | \$40,756,811         | \$4,784,582         | \$2,544,841         | \$5,371                                | 6%         |
| Phase 2                       | \$31,243,189         | \$81,450            | \$79,676            | \$0                                    | 0%         |
| <b>Total</b>                  | <b>\$72,000,000</b>  | <b>\$4,866,032</b>  | <b>\$2,624,516</b>  | <b>\$5,371</b>                         | <b>4%</b>  |
| <b>Orange High School</b>     |                      |                     |                     |  |            |
| Phase 1 - HS Science Center   | \$52,388,588         | \$11,724,966        | \$8,510,343         | \$910,925                              | 16%        |
| Phase 2                       | \$19,611,412         | \$104,078           | \$100,326           | \$0                                    | 1%         |
| <b>Total</b>                  | <b>\$72,000,000</b>  | <b>\$11,829,044</b> | <b>\$8,610,669</b>  | <b>\$910,925</b>                       | <b>12%</b> |
| <b>Villa Park High School</b> |                      |                     |                     |  |            |
| Phase 1 - HS Science Center   | \$45,200,000         | \$5,775,725         | \$2,733,920         | \$75,244                               | 6%         |
| Phase 2                       | \$26,800,000         | \$64,137            | \$61,843            | \$0                                    | 0%         |
| <b>Total</b>                  | <b>\$72,000,000</b>  | <b>\$5,839,862</b>  | <b>\$2,795,762</b>  | <b>\$75,244</b>                        | <b>4%</b>  |





### 3.1 Project Cost Estimate

#### Measure S Bond Program

#### Budget vs Actuals - By School and Budget Category with Vendor Detail

#### Monthly Progress Report January 2019

QSS Data thru 1/31/2019

#### Canyon High School

#### 390-0000 Canyon HS IP Surveillance Camera and Systems

##### 1. FF&E (IP Surveillance Camera)

##### \$5000+ New Equipment

|   |                 |                 |                 |            |               |
|---|-----------------|-----------------|-----------------|------------|---------------|
| CDW GOVERNMENT INC (Parts for IP Camera Systems)                | \$29,337        | \$29,337        | \$29,337        | \$0        | 100.00%       |
| DIGITAL NETWORKS GROUP INC (F/I IP Camera Software)             | \$7,093         | \$7,093         | \$7,093         | \$0        | 100.00%       |
| INTER-PACIFIC INC (Install IP Based Surveillance Camera System) | \$18,163        | \$18,163        | \$17,255        | \$0        | 95.00%        |
|   | <b>\$54,593</b> | <b>\$54,593</b> | <b>\$53,684</b> | <b>\$0</b> | <b>98.34%</b> |

##### 5. Contingency

##### 5.01 Project Contingency

UNCOMMITTED

|                |            |            |            |            |              |
|----------------|------------|------------|------------|------------|--------------|
| \$3,994        |            |            |            |            |              |
| <b>\$3,994</b> | <b>\$0</b> | <b>\$0</b> | <b>\$0</b> | <b>\$0</b> | <b>0.00%</b> |

#### Total 390-0000 Canyon HS IP Surveillance Camera and Systems

|                 |                 |                 |            |               |
|-----------------|-----------------|-----------------|------------|---------------|
| <b>\$58,587</b> | <b>\$54,593</b> | <b>\$53,684</b> | <b>\$0</b> | <b>91.63%</b> |
|-----------------|-----------------|-----------------|------------|---------------|

#### 390-9520 Canyon HS Science Center

##### 1. Design Cost

##### 1.01 Architect

|  |                    |                    |                    |            |               |
|--|--------------------|--------------------|--------------------|------------|---------------|
| GKKWORKS (Architect of Record)           | \$3,207,430        | \$3,207,430        | \$2,215,785        | \$0        | 69.08%        |
| LIONAKIS (Program Master Specifications) | \$14,058           | \$14,058           | \$14,058           | \$0        | 100.00%       |
| UNCOMMITTED                              | \$626              |                    |                    |            |               |
|  | <b>\$3,222,114</b> | <b>\$3,221,488</b> | <b>\$2,229,843</b> | <b>\$0</b> | <b>69.20%</b> |

##### 2. Construction Cost

##### 2.01 Construction - Science Center

UNCOMMITTED

|                     |            |            |            |            |              |
|---------------------|------------|------------|------------|------------|--------------|
| \$43,935,604        |            |            |            |            |              |
| <b>\$43,935,604</b> | <b>\$0</b> | <b>\$0</b> | <b>\$0</b> | <b>\$0</b> | <b>0.00%</b> |

##### 3. Program and Construction Management

##### 3.01 Program Management Fees

|                               |                    |                  |                  |            |               |
|-------------------------------|--------------------|------------------|------------------|------------|---------------|
| CUMMING CONSTRUCTION MGMT INC | \$614,748          | \$614,748        | \$407,029        | \$0        | 66.21%        |
| UNCOMMITTED                   | \$1,160,767        |                  |                  |            |               |
|                               | <b>\$1,775,515</b> | <b>\$614,748</b> | <b>\$407,029</b> | <b>\$0</b> | <b>22.92%</b> |

##### 3.02 Construction Management Fees

|            |                    |                    |                  |                 |               |
|------------|--------------------|--------------------|------------------|-----------------|---------------|
| GAFCON INC | \$2,579,884        | \$2,579,884        | \$632,349        | \$49,828        | 24.51%        |
|            | <b>\$2,579,884</b> | <b>\$2,579,884</b> | <b>\$632,349</b> | <b>\$49,828</b> | <b>24.51%</b> |

##### 4. Construction Support Costs

##### 4.01 Rental

|                             |                  |                  |            |            |              |
|-----------------------------|------------------|------------------|------------|------------|--------------|
| SEAN KHAN CONSULTING CO INC | \$257,322        | \$257,322        | \$0        | \$0        | 0.00%        |
|                             | <b>\$257,322</b> | <b>\$257,322</b> | <b>\$0</b> | <b>\$0</b> | <b>0.00%</b> |



**Measure S Bond Program**  
**Budget vs Actuals - By School and Budget Category with Vendor Detail**

**Monthly Progress Report January 2019**  
**QSS Data thru 1/31/2019**

**4.02 Title, Environmental, Stormwater Management**

| Budget                                      | Year to Date Contracted | Year to Date Expense | Quarterly Expense Jan '19 - Mar '19 | % Expended    |
|---|-------------------------|----------------------|-------------------------------------|---------------|
| CHICAGO TITLE COMPANY                       | \$750                   | \$750                | \$750                               | \$0 100.00%   |
| CITY OF ANAHEIM                             | \$2,000                 | \$2,000              | \$2,000                             | \$0 100.00%   |
| CITY OF ANAHEIM - WATER                     | \$695                   | \$695                | \$695                               | \$0 100.00%   |
| COUNTY OF ORANGE - ENVIRONMENTAL HEALTH     | \$1,615                 | \$1,615              | \$1,615                             | \$0 100.00%   |
| ENVIRONMENTAL AUDIT INC                     | \$50,800                | \$50,800             | \$21,375                            | \$0 42.08%    |
| OUSD COST OF INTEREST DISTRIBUTION FY 16/17 | \$1                     | \$1                  | \$1                                 | \$0 100.00%   |
| UNCOMMITTED                                 | \$118,932               |                      |                                     |               |
| <b>\$174,793</b>                            | <b>\$55,861</b>         | <b>\$26,436</b>      | <b>\$0</b>                          | <b>15.12%</b> |

**4.03 Commissioning**

|                     |                 |                |            |               |
|---------------------|-----------------|----------------|------------|---------------|
| P2S ENGINEERING INC | \$49,202        | \$49,202       | \$4,963    | \$0 10.09%    |
| <b>\$49,202</b>     | <b>\$49,202</b> | <b>\$4,963</b> | <b>\$0</b> | <b>10.09%</b> |

**4.05 DSA Review Fees**

|                             |                  |                  |            |               |
|-----------------------------|------------------|------------------|------------|---------------|
| DIVISION OF STATE ARCHITECT | \$494,050        | \$494,050        | \$494,050  | \$0 100.00%   |
| UNCOMMITTED                 | \$286,260        |                  |            |               |
| <b>\$780,310</b>            | <b>\$494,050</b> | <b>\$494,050</b> | <b>\$0</b> | <b>63.31%</b> |

**4.06 Postage, Printing & Advertising**

|                                |                 |                |            |              |
|--------------------------------|-----------------|----------------|------------|--------------|
| AMERICAN REPROGRAPHICS CO LLC  | \$12,867        | \$12,867       | \$2,867    | \$0 22.28%   |
| SOUTHERN CALIFORNIA NEWS GROUP | \$3,352         | \$3,352        | \$352      | \$0 10.50%   |
| UNCOMMITTED                    | \$59,779        |                |            |              |
| <b>\$75,997</b>                | <b>\$16,219</b> | <b>\$3,219</b> | <b>\$0</b> | <b>4.24%</b> |

**4.07 DSA Inspection**

|                  |            |            |            |              |
|------------------|------------|------------|------------|--------------|
| UNCOMMITTED      | \$664,971  |            |            |              |
| <b>\$664,971</b> | <b>\$0</b> | <b>\$0</b> | <b>\$0</b> | <b>0.00%</b> |

**4.08 DSA Construction Phase Testing**

|                  |            |            |            |              |
|------------------|------------|------------|------------|--------------|
| UNCOMMITTED      | \$664,971  |            |            |              |
| <b>\$664,971</b> | <b>\$0</b> | <b>\$0</b> | <b>\$0</b> | <b>0.00%</b> |

**4.10 Labor Compliance**

|                 |            |            |            |              |
|-----------------|------------|------------|------------|--------------|
| UNCOMMITTED     | \$94,996   |            |            |              |
| <b>\$94,996</b> | <b>\$0</b> | <b>\$0</b> | <b>\$0</b> | <b>0.00%</b> |

**4.11 Preliminary Testing (Hazmat, Topo Survey, Geo**

|  |                 |                 |              |               |
|--|-----------------|-----------------|--------------|---------------|
| C BELOW SUBSURFACE IMAGING (Subsurface Investigation)        | \$8,445         | \$8,445         | \$8,445      | \$225 100.00% |
| CALIFORNIA GEOLOGICAL SURVEY (Geology and Seismology Review) | \$3,600         | \$3,600         | \$3,600      | \$0 100.00%   |
| HARRINGTON GEOTECHNICAL ENGINEERING INC (Geotechnical Soils) | \$13,500        | \$13,500        | \$13,500     | \$0 100.00%   |
| PROVENCHER, GEORGE (Fire Hydrant Flow Test)                  | \$720           | \$720           | \$720        | \$0 100.00%   |
| RMA GROUP (Utility Location / Mapping)                       | \$26,103        | \$26,103        | \$26,103     | \$0 100.00%   |
| XICOTENCATL ENRIQUE SALAZAR (Topographical Survey)           | \$20,100        | \$20,100        | \$20,100     | \$0 100.00%   |
| UNCOMMITTED  | \$656,527       |                 |              |               |
| <b>\$728,994</b>   | <b>\$72,468</b> | <b>\$72,468</b> | <b>\$225</b> | <b>9.94%</b>  |

**4.12 Utility Connection Fees (with Local Permittin**

|                  |            |            |            |              |
|------------------|------------|------------|------------|--------------|
| UNCOMMITTED      | \$189,991  |            |            |              |
| <b>\$189,991</b> | <b>\$0</b> | <b>\$0</b> | <b>\$0</b> | <b>0.00%</b> |

**4.13 FF&E (Laboratory Tables and Chairs, other)**



**Measure S Bond Program**  
**Budget vs Actuals - By School and Budget Category with Vendor Detail**

**Monthly Progress Report January 2019**  
**QSS Data thru 1/31/2019**

|   | Budget             | Year to Date<br>Contracted | Year to Date<br>Expense | Quarterly<br>Expense<br>Jan '19 - Mar '19 | % Expended   |
|---|--------------------|----------------------------|-------------------------|---|--------------|
| UNCOMMITTED                               | \$1,519,934        |                            |                         |   |              |
|   | <b>\$1,519,934</b> | <b>\$0</b>                 | <b>\$0</b>              | <b>\$0</b>                                | <b>0.00%</b> |
| 4.14 IT Technology Infrastructure         |                    |                            |                         |   |              |
| UNCOMMITTED                               | \$664,971          |                            |                         |   |              |
|   | <b>\$664,971</b>   | <b>\$0</b>                 | <b>\$0</b>              | <b>\$0</b>                                | <b>0.00%</b> |
| 4.15 Legal Counsel                        |                    |                            |                         |   |              |
| UNCOMMITTED                               | \$94,996           |                            |                         |   |              |
|   | <b>\$94,996</b>    | <b>\$0</b>                 | <b>\$0</b>              | <b>\$0</b>                                | <b>0.00%</b> |
| 5. Contingency                            |                    |                            |                         |   |              |
| 5.01 Construction Contingency             |                    |                            |                         |   |              |
| UNCOMMITTED                               | \$3,799,836        |                            |                         |   |              |
|   | <b>\$3,799,836</b> | <b>\$0</b>                 | <b>\$0</b>              | <b>\$0</b>                                | <b>0.00%</b> |
| 5.02 Project Contingency                  |                    |                            |                         |   |              |
| UNCOMMITTED                               | \$8,225,599        |                            |                         |   |              |
|   | <b>\$8,225,599</b> | <b>\$0</b>                 | <b>\$0</b>              | <b>\$0</b>                                | <b>0.00%</b> |
| Total 390-9520 Canyon HS Science Center   | \$69,500,000       | \$7,361,241                | \$3,870,356             | \$50,053                                  | 5.57%        |
| 390-TBD Canyon HS Unallocated Funds       |                    |                            |                         |   |              |
| 1. Unallocated Bond Funds                 |                    |                            |                         |   |              |
| 1.01 Unbudgeted Bond Funds                |                    |                            |                         |   |              |
| UNCOMMITTED                               | \$2,441,413        |                            |                         |   |              |
|   | <b>\$2,441,413</b> | <b>\$0</b>                 | <b>\$0</b>              | <b>\$0</b>                                | <b>0.00%</b> |
| Total 390-TBD Canyon HS Unallocated Funds | \$2,441,413        | \$0                        | \$0                     | \$0                                       | 0.00%        |
| Canyon High School                        | \$72,000,000       | \$7,415,833                | \$3,924,040             | \$50,053                                  | 5.45%        |



### 3.1 Project Cost Estimate

#### Measure S Bond Program

#### Budget vs Actuals - By School and Budget Category with Vendor Detail

#### Monthly Progress Report January 2019

QSS Data thru 1/31/2019

#### El Modena High School

#### 391-0000 El Modena HS IP Surveillance Camera and Systems

##### 1. FF&E (IP Surveillance Camera)

##### 5000+ New Equipment

|   |                 |                 |                 |            |               |
|---|-----------------|-----------------|-----------------|------------|---------------|
| CDW GOVERNMENT INC (Parts for IP Camera Systems)                | \$39,659        | \$39,659        | \$39,388        | \$0        | 99.32%        |
| DIGITAL NETWORKS GROUP INC (F/I IP Camera Software)             | \$11,719        | \$11,719        | \$11,719        | \$0        | 100.00%       |
| INTER-PACIFIC INC (Install IP Based Surveillance Camera System) | \$30,073        | \$30,073        | \$28,569        | \$0        | 95.00%        |
|   | <b>\$81,450</b> | <b>\$81,450</b> | <b>\$79,676</b> | <b>\$0</b> | <b>97.82%</b> |

##### 5. Contingency

##### 5.01 Project Contingency

UNCOMMITTED

|                |            |            |            |            |              |
|----------------|------------|------------|------------|------------|--------------|
| \$6,299        |            |            |            |            |              |
| <b>\$6,299</b> | <b>\$0</b> | <b>\$0</b> | <b>\$0</b> | <b>\$0</b> | <b>0.00%</b> |

#### Total 391-0000 El Modena HS IP Surveillance Camera and Systems

|                 |                 |                 |            |               |
|-----------------|-----------------|-----------------|------------|---------------|
| <b>\$87,749</b> | <b>\$81,450</b> | <b>\$79,676</b> | <b>\$0</b> | <b>90.80%</b> |
|-----------------|-----------------|-----------------|------------|---------------|

#### 391-9520 El Modena HS Science Center

##### 1. Design Cost

##### 1.01 Architect

|  |                    |                    |                    |                |               |
|--|--------------------|--------------------|--------------------|----------------|---------------|
| HARLEY ELLIS DEVEREAUX (Architect of Record) | \$1,954,014        | \$1,954,014        | \$1,374,503        | \$4,071        | 70.34%        |
| LIONAKIS (Program Master Specifications)     | \$14,059           | \$14,059           | \$14,059           | \$0            | 100.00%       |
| UNCOMMITTED                                  | \$31,185           |                    |                    |                |               |
|  | <b>\$1,999,258</b> | <b>\$1,968,073</b> | <b>\$1,388,562</b> | <b>\$4,071</b> | <b>69.45%</b> |

##### 2. Construction Cost

##### 2.01 Construction (includes escalation)

UNCOMMITTED

|                     |            |            |            |            |              |
|---------------------|------------|------------|------------|------------|--------------|
| \$27,784,872        |            |            |            |            |              |
| <b>\$27,784,872</b> | <b>\$0</b> | <b>\$0</b> | <b>\$0</b> | <b>\$0</b> | <b>0.00%</b> |

##### 3. Program and Construction Management

##### 3.01 Program Management Fees

|                               |                    |                  |                  |            |               |
|-------------------------------|--------------------|------------------|------------------|------------|---------------|
| CUMMING CONSTRUCTION MGMT INC | \$524,726          | \$524,726        | \$291,682        | \$0        | 55.59%        |
| UNCOMMITTED                   | \$502,059          |                  |                  |            |               |
|                               | <b>\$1,026,785</b> | <b>\$524,726</b> | <b>\$291,682</b> | <b>\$0</b> | <b>28.41%</b> |

##### 3.02 Construction Management Fees

|                  |                    |                    |                  |            |               |
|------------------|--------------------|--------------------|------------------|------------|---------------|
| ARCADIS U.S. INC | \$1,861,240        | \$1,861,240        | \$481,083        | \$0        | 25.85%        |
|                  | <b>\$1,861,240</b> | <b>\$1,861,240</b> | <b>\$481,083</b> | <b>\$0</b> | <b>25.85%</b> |

##### 4. Construction Support Costs

##### 4.02 Title, Environmental, Stormwater Management

|                                     |         |         |         |     |         |
|-------------------------------------|---------|---------|---------|-----|---------|
| CHICAGO TITLE COMPANY               | \$1,500 | \$1,500 | \$1,500 | \$0 | 100.00% |
| CITY OF ORANGE - WATER (Plan Check) | \$2,000 | \$2,000 | \$2,000 | \$0 | 100.00% |



**Measure S Bond Program**  
**Budget vs Actuals - By School and Budget Category with Vendor Detail**

**Monthly Progress Report January 2019**  
**QSS Data thru 1/31/2019**

|  | Budget           | Year to Date Contracted | Year to Date Expense | Quarterly Expense<br>Jan '19 - Mar '19 | % Expended    |
|--|------------------|-------------------------|----------------------|--|---------------|
| CITY OF ORANGE (Plan Check)                                  | \$71             | \$71                    | \$71                 | \$0                                    | 100.00%       |
| ENVIRONMENTAL AUDIT INC                                      | \$10,950         | \$10,950                | \$8,548              | \$0                                    | 78.06%        |
| OUSD COST OF INTEREST DISTRIBUTION FY 16/17                  | \$1              | \$1                     | \$1                  | \$0                                    | 100.00%       |
| UNCOMMITTED  | \$98,565         |                         |                      |  |               |
|  | <b>\$113,087</b> | <b>\$14,522</b>         | <b>\$12,119</b>      | <b>\$0</b>                             | <b>10.72%</b> |
| <b>4.03 Commissioning</b>                                    |                  |                         |                      |  |               |
| P2S ENGINEERING INC  | \$30,558         | \$30,558                | \$4,930              | \$0                                    | 16.13%        |
|  | <b>\$30,558</b>  | <b>\$30,558</b>         | <b>\$4,930</b>       | <b>\$0</b>                             | <b>16.13%</b> |
| <b>4.05 DSA Review Fees</b>                                  |                  |                         |                      |  |               |
| DIVISION OF STATE ARCHITECT                                  | \$306,338        | \$306,338               | \$306,338            | \$0                                    | 100.00%       |
| UNCOMMITTED  | \$184,379        |                         |                      |  |               |
|  | <b>\$490,717</b> | <b>\$306,338</b>        | <b>\$306,338</b>     | <b>\$0</b>                             | <b>62.43%</b> |
| <b>4.06 Postage, Printing &amp; Advertising</b>              |                  |                         |                      |  |               |
| AMERICAN REPROGRAPHICS CO LLC                                | \$14,867         | \$14,867                | \$4,867              | \$0                                    | 32.74%        |
| SOUTHERN CALIFORNIA NEWS GROUP                               | \$3,352          | \$3,352                 | \$352                | \$0                                    | 10.50%        |
| UNCOMMITTED  | \$30,950         |                         |                      |  |               |
|  | <b>\$49,168</b>  | <b>\$18,218</b>         | <b>\$5,218</b>       | <b>\$0</b>                             | <b>10.61%</b> |
| <b>4.07 DSA Inspection</b>                                   |                  |                         |                      |  |               |
| UNCOMMITTED  | \$430,217        |                         |                      |  |               |
|  | <b>\$430,217</b> | <b>\$0</b>              | <b>\$0</b>           | <b>\$0</b>                             | <b>0.00%</b>  |
| <b>4.08 DSA Construction Phase Testing</b>                   |                  |                         |                      |  |               |
| UNCOMMITTED  | \$430,217        |                         |                      |  |               |
|  | <b>\$430,217</b> | <b>\$0</b>              | <b>\$0</b>           | <b>\$0</b>                             | <b>0.00%</b>  |
| <b>4.10 Labor Compliance</b>                                 |                  |                         |                      |  |               |
| UNCOMMITTED  | \$61,460         |                         |                      |  |               |
|  | <b>\$61,460</b>  | <b>\$0</b>              | <b>\$0</b>           | <b>\$0</b>                             | <b>0.00%</b>  |
| <b>4.11 Preliminary Testing (Hazmat, Topo Survey, Geo)</b>   |                  |                         |                      |  |               |
| ALLEGIAN FIRE PROTECTION INC (Fire Hydrant Flow Test)        | \$525            | \$525                   | \$525                | \$0                                    | 100.00%       |
| CALIFORNIA GEOLOGICAL SURVEY (Geology and Seismology Review) | \$3,600          | \$3,600                 | \$3,600              | \$0                                    | 100.00%       |
| ENVIRONMENTAL NETWORK CORPORATION (Hazardous Material)       | \$6,000          | \$6,000                 | \$0                  | \$0                                    | 0.00%         |
| HARLEY ELLIS DEVEREAUX (Architect of Record)                 | \$14,908         | \$14,908                | \$14,908             | \$1,300                                | 100.00%       |
| PCA ARBORISTS & CONSULTANTS INC                              | \$1,569          | \$1,569                 | \$1,569              | \$0                                    | 100.00%       |
| THE CONVERSE PROFESSIONAL GROUP (Soils Investigation)        | \$30,640         | \$30,640                | \$30,640             | \$0                                    | 100.00%       |
| UNCOMMITTED  | \$430,217        |                         |                      |  |               |
|  | <b>\$487,459</b> | <b>\$57,242</b>         | <b>\$51,242</b>      | <b>\$1,300</b>                         | <b>10.51%</b> |
| <b>4.12 Utility Connection Fees (with Local Permittin</b>    |                  |                         |                      |  |               |
| SOUTHERN CALIFORNIA EDISON                                   | \$3,665          | \$3,665                 | \$3,665              | \$0                                    | 100.00%       |
| UNCOMMITTED  | \$119,254        |                         |                      |  |               |
|  | <b>\$122,919</b> | <b>\$3,665</b>          | <b>\$3,665</b>       | <b>\$0</b>                             | <b>2.98%</b>  |
| <b>4.13 FF&amp;E (Laboratory Tables and Chairs, other)</b>   |                  |                         |                      |  |               |
| UNCOMMITTED  | \$983,354        |                         |                      |  |               |
|  | <b>\$983,354</b> | <b>\$0</b>              | <b>\$0</b>           | <b>\$0</b>                             | <b>0.00%</b>  |
| <b>4.14 IT Technology Infrastructure</b>                     |                  |                         |                      |  |               |



**Measure S Bond Program**  
**Budget vs Actuals - By School and Budget Category with Vendor Detail**

**Monthly Progress Report January 2019**  
**QSS Data thru 1/31/2019**

|  | Budget              | Year to Date<br>Contracted | Year to Date<br>Expense | Quarterly<br>Expense<br>Jan '19 - Mar '19 | % Expended   |
|--|---------------------|----------------------------|-------------------------|---|--------------|
| UNCOMMITTED                                  | \$430,217           |                            |                         |   |              |
|  | <b>\$430,217</b>    | <b>\$0</b>                 | <b>\$0</b>              | <b>\$0</b>                                | <b>0.00%</b> |
| 4.15 Legal Counsel                           |                     |                            |                         |   |              |
| UNCOMMITTED                                  | \$61,460            |                            |                         |   |              |
|  | <b>\$61,460</b>     | <b>\$0</b>                 | <b>\$0</b>              | <b>\$0</b>                                | <b>0.00%</b> |
| 5. Contingency                               |                     |                            |                         |   |              |
| 5.01 Construction Contingency                |                     |                            |                         |   |              |
| UNCOMMITTED                                  | \$2,458,385         |                            |                         |   |              |
|  | <b>\$2,458,385</b>  | <b>\$0</b>                 | <b>\$0</b>              | <b>\$0</b>                                | <b>0.00%</b> |
| 5.02 Project Contingency                     |                     |                            |                         |   |              |
| UNCOMMITTED                                  | \$1,935,438         |                            |                         |   |              |
|  | <b>\$1,935,438</b>  | <b>\$0</b>                 | <b>\$0</b>              | <b>\$0</b>                                | <b>0.00%</b> |
| Total 391-9520 El Modena HS Science Center   | <b>\$40,756,811</b> | <b>\$4,784,582</b>         | <b>\$2,544,841</b>      | <b>\$5,371</b>                            | <b>6.24%</b> |
| 391-TBD El Modena HS Unallocated Funds       |                     |                            |                         |   |              |
| 1. Unallocated Bond Funds                    |                     |                            |                         |   |              |
| 1.01 Unbudgeted Bond Funds                   |                     |                            |                         |   |              |
| UNCOMMITTED                                  | \$31,155,440        |                            |                         |   |              |
|  | <b>\$31,155,440</b> | <b>\$0</b>                 | <b>\$0</b>              | <b>\$0</b>                                | <b>0.00%</b> |
| Total 391-TBD El Modena HS Unallocated Funds | <b>\$31,155,440</b> | <b>\$0</b>                 | <b>\$0</b>              | <b>\$0</b>                                | <b>0.00%</b> |
| El Modena High School                        | <b>\$72,000,000</b> | <b>\$4,866,032</b>         | <b>\$2,624,516</b>      | <b>\$5,371</b>                            | <b>3.65%</b> |



### 3.1 Project Cost Estimate

#### Measure S Bond Program

#### Budget vs Actuals - By School and Budget Category with Vendor Detail

| Monthly Progress Report January 2019<br>QSS Data thru 1/31/2019    |                  |                         |                      |  |                |
|--|------------------|-------------------------|----------------------|--|----------------|
|  | Budget           | Year to Date Contracted | Year to Date Expense | Quarterly Expense<br>Jan '19 - Mar '19 | % Expended     |
| Orange High School   |                  |                         |                      |  |                |
| 392-0000 Orange HS IP Surveillance Camera and Systems              |                  |                         |                      |  |                |
| 1. FF&E (IP Surveillance Camera)                                   |                  |                         |                      |  |                |
| \$5000+ New Equipment  |                  |                         |                      |  |                |
| CDW GOVERNMENT INC (Parts for IP Camera Systems)                   | \$55,672         | \$55,672                | \$53,662             | \$0                                    | 96.39%         |
| DIGITAL NETWORKS GROUP INC (F/I IP Camera Software)                | \$13,569         | \$13,569                | \$13,569             | \$0                                    | 100.00%        |
| INTER-PACIFIC INC (Install IP Based Surveillance Camera System)    | \$34,837         | \$34,837                | \$33,095             | \$0                                    | 95.00%         |
|  | <b>\$104,078</b> | <b>\$104,078</b>        | <b>\$100,326</b>     | <b>\$0</b>                             | <b>96.40%</b>  |
| 5. Contingency   |                  |                         |                      |  |                |
| 5.01 Project Contingency   |                  |                         |                      |  |                |
| UNCOMMITTED  | \$7,710          |                         |                      |  |                |
|  | <b>\$7,710</b>   | <b>\$0</b>              | <b>\$0</b>           | <b>\$0</b>                             | <b>0.00%</b>   |
| <b>Total 392-0000 Orange HS IP Surveillance Camera and Systems</b> | <b>\$111,788</b> | <b>\$104,078</b>        | <b>\$100,326</b>     | <b>\$0</b>                             | <b>89.75%</b>  |
| 392-9520 Demolition of Portable Buildings                          |                  |                         |                      |  |                |
| 2.01 Demolition of Portable Buildings                              |                  |                         |                      |  |                |
| CITY OF ORANGE (Plan Check)  | \$2,000          | \$2,000                 | \$2,000              | \$0                                    | 100.00%        |
| GIANNELLI ELECTRIC INC (Low Voltage Mapping)                       | \$45,888         | \$45,888                | \$35,298             | \$0                                    | 76.92%         |
| GRUETT TREE CO INC (Removal of Trees)                              | \$7,625          | \$7,625                 | \$7,625              | \$0                                    | 100.00%        |
| INTEGRATED DEMOLITION AND REMEDIATION (Abatement and               | \$44,800         | \$44,800                | \$44,800             | \$0                                    | 100.00%        |
| J & A FENCE (Custodial Storage Fencing)                            | \$6,885          | \$6,885                 | \$6,885              | \$0                                    | 100.00%        |
| KYA SERVICES LLC (Install Carpet)                                  | \$20,824         | \$20,824                | \$9,564              | \$0                                    | 45.93%         |
| OLESH, KEITH (Termite Services)                                    | \$1,500          | \$1,500                 | \$1,500              | \$0                                    | 100.00%        |
| TIME & ALARM SYSTEMS (Disconnect Fire Alarm and Low Voltage        | \$3,100          | \$3,100                 | \$3,100              | \$0                                    | 100.00%        |
| TRIMARK RAYGAL LLC   | \$89,860         | \$89,860                | \$0                  | \$0                                    | 0.00%          |
| UNIVERSAL ASPHALT CO (Remove and Patch Asphalt)                    | \$6,830          | \$6,830                 | \$6,830              | \$0                                    | 100.00%        |
|  | <b>\$229,312</b> | <b>\$229,312</b>        | <b>\$117,602</b>     | <b>\$0</b>                             | <b>51.28%</b>  |
| <b>Total 392-9520 Demolition of Portable Buildings</b>             | <b>\$229,312</b> | <b>\$229,312</b>        | <b>\$117,602</b>     | <b>\$0</b>                             | <b>51.28%</b>  |
| 392-9520 Orange HS Site Improvements (DSA 04-116673)               |                  |                         |                      |  |                |
| 1. Design Cost   |                  |                         |                      |  |                |
| 1.01 Architect   |                  |                         |                      |  |                |
| SILVER CREEK INDUSTRIES INC (Engineering for Warming Kitchen       | \$29,682         | \$29,682                | \$29,682             | \$0                                    | 100.00%        |
|  | <b>\$29,682</b>  | <b>\$29,682</b>         | <b>\$29,682</b>      | <b>\$0</b>                             | <b>100.00%</b> |
| 2. Construction Cost   |                  |                         |                      |  |                |
| 2.01 Construction  |                  |                         |                      |  |                |
| SWINERTON BUILDERS   | \$5,965,424      | \$5,965,424             | \$4,746,868          | \$440,073                              | 79.57%         |
| UNCOMMITTED  | \$298,271        |                         |                      |  |                |





**Measure S Bond Program**  
**Budget vs Actuals - By School and Budget Category with Vendor Detail**

**Monthly Progress Report January 2019**  
**QSS Data thru 1/31/2019**

|   | Budget             | Year to Date Contracted | Year to Date Expense | Quarterly Expense<br>Jan '19 - Mar '19 | % Expended     |
|---|--------------------|-------------------------|----------------------|--|----------------|
|   | \$6,263,695        | \$5,965,424             | \$4,746,868          | \$440,073                              | 75.78%         |
| <b>4. Construction Support Costs</b>                              |                    |                         |                      |  |                |
| <b>4.02 Title, Environmental, Stormwater Management</b>           |                    |                         |                      |  |                |
| ORANGE COUNTY HEALTH CARE AGENCY                                  | \$1,470            | \$1,470                 | \$1,470              | \$0                                    | 100.00%        |
|   | <b>\$1,470</b>     | <b>\$1,470</b>          | <b>\$1,470</b>       | <b>\$0</b>                             | <b>100.00%</b> |
| <b>4.05 DSA Review Fees</b>                                       |                    |                         |                      |  |                |
| DIVISION OF STATE ARCHITECT                                       | \$27,430           | \$27,430                | \$27,430             | \$0                                    | 100.00%        |
|   | <b>\$27,430</b>    | <b>\$27,430</b>         | <b>\$27,430</b>      | <b>\$0</b>                             | <b>100.00%</b> |
| <b>4.06 Postage, Printing &amp; Advertising</b>                   |                    |                         |                      |  |                |
| AMERICAN REPROGRAPHICS CO LLC                                     | \$7,206            | \$7,206                 | \$7,206              | \$0                                    | 100.00%        |
| SOUTHERN CALIFORNIA NEWS GROUP                                    | \$1,264            | \$1,264                 | \$1,264              | \$0                                    | 100.00%        |
| UNCOMMITTED   | \$1                |                         |                      |  |                |
|   | <b>\$8,471</b>     | <b>\$8,470</b>          | <b>\$8,470</b>       | <b>\$0</b>                             | <b>99.99%</b>  |
| <b>4.07 DSA Inspection</b>  |                    |                         |                      |  |                |
| KNOWLAND CONSTRUCTION SERVICES                                    | \$63,000           | \$63,000                | \$58,905             | \$0                                    | 93.50%         |
|   | <b>\$63,000</b>    | <b>\$63,000</b>         | <b>\$58,905</b>      | <b>\$0</b>                             | <b>93.50%</b>  |
| <b>4.08 DSA Construction Phase Testing</b>                        |                    |                         |                      |  |                |
| NINYO & MOORE   | \$113,255          | \$113,255               | \$90,106             | \$0                                    | 79.56%         |
|   | <b>\$113,255</b>   | <b>\$113,255</b>        | <b>\$90,106</b>      | <b>\$0</b>                             | <b>79.56%</b>  |
| <b>4.11 Preliminary Testing (Hazmat, Topo Survey, Geo</b>         |                    |                         |                      |  |                |
| ENVIRONMENTAL NETWORK CORPORATION (Hazardous Material             | \$9,100            | \$9,100                 | \$6,680              | \$3,370                                | 73.41%         |
|   | <b>\$9,100</b>     | <b>\$9,100</b>          | <b>\$6,680</b>       | <b>\$3,370</b>                         | <b>73.41%</b>  |
| <b>4.14 IT Technology Infrastructure</b>                          |                    |                         |                      |  |                |
| ACCO ENGINEERED SYSTEMS INC                                       | \$209,074          | \$209,074               | \$209,074            | \$0                                    | 100.00%        |
|   | <b>\$209,074</b>   | <b>\$209,074</b>        | <b>\$209,074</b>     | <b>\$0</b>                             | <b>100.00%</b> |
| <b>5. Contingency</b>   |                    |                         |                      |  |                |
| <b>5.01 Construction Contingency</b>                              |                    |                         |                      |  |                |
| UNCOMMITTED   | \$337,548          |                         |                      |  |                |
|   | <b>\$337,548</b>   | <b>\$0</b>              | <b>\$0</b>           | <b>\$0</b>                             | <b>0.00%</b>   |
| <b>Total 392-9520 Orange HS Site Improvements (DSA 04-116673)</b> | <b>\$7,062,725</b> | <b>\$6,426,905</b>      | <b>\$5,178,685</b>   | <b>\$443,443</b>                       | <b>73.32%</b>  |
| <b>392-9520 Orange HS Science Bldg (DSA 04-116859)</b>            |                    |                         |                      |  |                |
| <b>1. Design Cost</b>   |                    |                         |                      |  |                |
| <b>1.01 Architect</b>   |                    |                         |                      |  |                |
| LIONAKIS (Program Master Specifications)                          | \$2,303,002        | \$2,303,002             | \$1,733,308          | \$77,882                               | 75.26%         |
| UNCOMMITTED   | \$625              |                         |                      |  |                |
|   | <b>\$2,303,627</b> | <b>\$2,303,002</b>      | <b>\$1,733,308</b>   | <b>\$77,882</b>                        | <b>75.24%</b>  |
| <b>2. Construction Cost</b>                                       |                    |                         |                      |  |                |
| <b>2.02 Construction of Science Center</b>                        |                    |                         |                      |  |                |



**Measure S Bond Program**  
**Budget vs Actuals - By School and Budget Category with Vendor Detail**

**Monthly Progress Report January 2019**  
**QSS Data thru 1/31/2019**

|   | Budget              | Year to Date Contracted | Year to Date Expense | Quarterly Expense<br>Jan '19 - Mar '19 | % Expended    |
|---|---------------------|-------------------------|----------------------|--|---------------|
| UNCOMMITTED   | \$26,109,000        |                         |                      |  |               |
|   | <b>\$26,109,000</b> | <b>\$0</b>              | <b>\$0</b>           | <b>\$0</b>                             | <b>0.00%</b>  |
| <b>3. Program and Construction Management</b>             |                     |                         |                      |  |               |
| <b>3.01 Program Management Fees</b>                       |                     |                         |                      |  |               |
| CUMMING CONSTRUCTION MGMT INC                             | \$576,735           | \$576,735               | \$343,168            | \$0                                    | 59.50%        |
| UNCOMMITTED   | \$761,753           |                         |                      |  |               |
|   | <b>\$1,338,488</b>  | <b>\$576,735</b>        | <b>\$343,168</b>     | <b>\$0</b>                             | <b>25.64%</b> |
| <b>3.02 Construction Management Fees</b>                  |                     |                         |                      |  |               |
| BALFOUR BEATTY CONSTRUCTION                               | \$1,640,520         | \$1,640,520             | \$692,205            | \$389,600                              | 42.19%        |
|   | <b>\$1,640,520</b>  | <b>\$1,640,520</b>      | <b>\$692,205</b>     | <b>\$389,600</b>                       | <b>42.19%</b> |
| <b>4. Construction Support Costs</b>                      |                     |                         |                      |  |               |
| <b>4.02 Title, Environmental, Stormwater Management</b>   |                     |                         |                      |  |               |
| CHICAGO TITLE COMPANY                                     | \$1,500             | \$1,500                 | \$1,500              | \$0                                    | 100.00%       |
| OUSD COST OF INTEREST DISTRIBUTION FY 16/17               | \$1                 | \$1                     | \$1                  | \$0                                    | 100.00%       |
| PLACEWORKS INC  | \$52,231            | \$52,231                | \$52,231             | \$0                                    | 100.00%       |
| STATE WATER RESOURCES CONTROL BOARD (SWRCB)               | \$200               | \$200                   | \$200                | \$0                                    | 100.00%       |
| UNCOMMITTED   | \$95,298            |                         |                      |  |               |
|   | <b>\$149,230</b>    | <b>\$53,932</b>         | <b>\$53,932</b>      | <b>\$0</b>                             | <b>36.14%</b> |
| <b>4.03 Commissioning</b>                                 |                     |                         |                      |  |               |
| P2S ENGINEERING INC                                       | \$30,585            | \$30,585                | \$5,000              | \$0                                    | 16.35%        |
| UNCOMMITTED   | \$4,755             |                         |                      |  |               |
|   | <b>\$35,340</b>     | <b>\$30,585</b>         | <b>\$5,000</b>       | <b>\$0</b>                             | <b>14.15%</b> |
| <b>4.05 DSA Review Fees</b>                               |                     |                         |                      |  |               |
| DIVISION OF STATE ARCHITECT                               | \$252,750           | \$252,750               | \$252,750            | \$0                                    | 100.00%       |
| OUSD REVOLVING CASH                                       | \$500               | \$500                   | \$500                | \$0                                    | 100.00%       |
| UNCOMMITTED   | \$245,705           |                         |                      |  |               |
|   | <b>\$498,955</b>    | <b>\$253,250</b>        | <b>\$253,250</b>     | <b>\$0</b>                             | <b>50.76%</b> |
| <b>4.06 Postage, Printing &amp; Advertising</b>           |                     |                         |                      |  |               |
| AMERICAN REPROGRAPHICS CO LLC                             | \$11,305            | \$11,305                | \$7,762              | \$0                                    | 68.66%        |
| SOUTHERN CALIFORNIA NEWS GROUP                            | \$8,878             | \$8,878                 | \$8,518              | \$0                                    | 95.93%        |
| UNCOMMITTED   | \$36,867            |                         |                      |  |               |
|   | <b>\$57,050</b>     | <b>\$20,183</b>         | <b>\$16,279</b>      | <b>\$0</b>                             | <b>28.53%</b> |
| <b>4.07 DSA Inspection</b>                                |                     |                         |                      |  |               |
| UNCOMMITTED   | \$510,312           |                         |                      |  |               |
|   | <b>\$510,312</b>    | <b>\$0</b>              | <b>\$0</b>           | <b>\$0</b>                             | <b>0.00%</b>  |
| <b>4.08 DSA Construction Phase Testing</b>                |                     |                         |                      |  |               |
| UNCOMMITTED   | \$460,057           |                         |                      |  |               |
|   | <b>\$460,057</b>    | <b>\$0</b>              | <b>\$0</b>           | <b>\$0</b>                             | <b>0.00%</b>  |
| <b>4.10 Labor Compliance</b>                              |                     |                         |                      |  |               |
| UNCOMMITTED   | \$81,902            |                         |                      |  |               |
|   | <b>\$81,902</b>     | <b>\$0</b>              | <b>\$0</b>           | <b>\$0</b>                             | <b>0.00%</b>  |
| <b>4.11 Preliminary Testing (Hazmat, Topo Survey, Geo</b> |                     |                         |                      |  |               |



**Measure S Bond Program**  
**Budget vs Actuals - By School and Budget Category with Vendor Detail**

**Monthly Progress Report January 2019**  
**QSS Data thru 1/31/2019**

|  | Budget              | Year to Date Contracted | Year to Date Expense | Quarterly Expense<br>Jan '19 - Mar '19 | % Expended    |
|--|---------------------|-------------------------|----------------------|--|---------------|
| CALIFORNIA GEOLOGICAL SURVEY (Geology and Seismology Review) | \$3,600             | \$3,600                 | \$3,600              | \$0                                    | 100.00%       |
| KOURY ENGINEERING & TESTING INC (Geotechnical Engineering)   | \$13,300            | \$13,300                | \$13,300             | \$0                                    | 100.00%       |
| PENCO ENGINEERING INC (Topographical Survey Services)        | \$42,350            | \$42,350                | \$41,070             | \$0                                    | 96.98%        |
| RMA GROUP (Utility Location / Mapping)                       | \$49,533            | \$49,533                | \$49,533             | \$0                                    | 100.00%       |
| UNCOMMITTED  | \$580,704           |                         |                      |  |               |
| <b>4.12 Utility Connection Fees (with Local Permittin</b>    | <b>\$689,487</b>    | <b>\$108,783</b>        | <b>\$107,503</b>     | <b>\$0</b>                             | <b>15.59%</b> |
| CITY OF ORANGE (Plan Check)                                  | \$2,500             | \$2,500                 | \$2,500              | \$0                                    | 100.00%       |
| SOUTHERN CALIFORNIA EDISON                                   | \$6,912             | \$6,912                 | \$6,912              | \$0                                    | 100.00%       |
| UNCOMMITTED  | \$154,391           |                         |                      |  |               |
| <b>4.13 FF&amp;E (Laboratory Tables and Chairs, other)</b>   | <b>\$163,803</b>    | <b>\$9,412</b>          | <b>\$9,412</b>       | <b>\$0</b>                             | <b>5.75%</b>  |
| CONEXWEST  | \$9,466             | \$9,466                 | \$0                  | \$0                                    | 0.00%         |
| UNCOMMITTED  | \$1,300,962         |                         |                      |  |               |
| <b>4.14 IT Technology Infrastructure</b>                     | <b>\$1,310,428</b>  | <b>\$9,466</b>          | <b>\$0</b>           | <b>\$0</b>                             | <b>0.00%</b>  |
| ACCO ENGINEERED SYSTEMS INC                                  | \$62,883            | \$62,883                | \$0                  | \$0                                    | 0.00%         |
| UNCOMMITTED  | \$265,349           |                         |                      |  |               |
| <b>4.15 Legal Counsel</b>                                    | <b>\$328,231</b>    | <b>\$62,883</b>         | <b>\$0</b>           | <b>\$0</b>                             | <b>0.00%</b>  |
| UNCOMMITTED  | \$81,902            |                         |                      |  |               |
|  | <b>\$81,902</b>     | <b>\$0</b>              | <b>\$0</b>           | <b>\$0</b>                             | <b>0.00%</b>  |
| <b>5. Contingency</b>  |                     |                         |                      |  |               |
| <b>5.01 Construction Contingency</b>                         |                     |                         |                      |  |               |
| UNCOMMITTED  | \$2,610,900         |                         |                      |  |               |
|  | <b>\$2,610,900</b>  | <b>\$0</b>              | <b>\$0</b>           | <b>\$0</b>                             | <b>0.00%</b>  |
| <b>5.02 Project Contingency</b>                              |                     |                         |                      |  |               |
| UNCOMMITTED  | \$6,727,319         |                         |                      |  |               |
|  | <b>\$6,727,319</b>  | <b>\$0</b>              | <b>\$0</b>           | <b>\$0</b>                             | <b>0.00%</b>  |
| <b>Total 392-9520 Orange HS Science Bldg (DSA 04-116859)</b> | <b>\$45,096,552</b> | <b>\$5,068,749</b>      | <b>\$3,214,056</b>   | <b>\$467,482</b>                       | <b>7.13%</b>  |
| <b>392-TBD Orange HS Unallocated Funds</b>                   |                     |                         |                      |  |               |
| <b>1. Unallocated Bond Funds</b>                             |                     |                         |                      |  |               |
| <b>1.01 Unbudgeted Bond Funds</b>                            |                     |                         |                      |  |               |
| UNCOMMITTED  | \$19,499,624        |                         |                      |  |               |
|  | <b>\$19,499,624</b> | <b>\$0</b>              | <b>\$0</b>           | <b>\$0</b>                             | <b>0.00%</b>  |
| <b>Total 392-TBD Orange HS Unallocated Funds</b>             | <b>\$19,499,624</b> | <b>\$0</b>              | <b>\$0</b>           | <b>\$0</b>                             | <b>0.00%</b>  |
| <b>Orange High School</b>                                    | <b>\$72,000,000</b> | <b>\$11,829,044</b>     | <b>\$8,610,669</b>   | <b>\$910,925</b>                       | <b>11.96%</b> |



### 3.1 Project Cost Estimate

#### Measure S Bond Program

#### Budget vs Actuals - By School and Budget Category with Vendor Detail

#### Monthly Progress Report January 2019

QSS Data thru 1/31/2019

#### Villa Park High School

#### 394-0000 Villa Park HS IP Surveillance Camera and Systems

##### 1. FF&E (IP Surveillance Camera)

##### \$5000+ New Equipment

|   |                 |                 |                 |            |               |
|---|-----------------|-----------------|-----------------|------------|---------------|
| CDW GOVERNMENT INC (Parts for IP Camera Systems)                | \$33,369        | \$33,369        | \$32,182        | \$0        | 96.44%        |
| DIGITAL NETWORKS GROUP INC (F/I IP Camera Software)             | \$8,635         | \$8,635         | \$8,635         | \$0        | 100.00%       |
| INTER-PACIFIC INC (Install IP Based Surveillance Camera System) | \$22,133        | \$22,133        | \$21,026        | \$0        | 95.00%        |
|   | <b>\$64,137</b> | <b>\$64,137</b> | <b>\$61,843</b> | <b>\$0</b> | <b>96.42%</b> |

##### 5. Contingency

##### 5.01 Project Contingency

UNCOMMITTED

|                |            |            |            |            |              |
|----------------|------------|------------|------------|------------|--------------|
| \$4,930        |            |            |            |            |              |
| <b>\$4,930</b> | <b>\$0</b> | <b>\$0</b> | <b>\$0</b> | <b>\$0</b> | <b>0.00%</b> |

#### Total 394-0000 Villa Park HS IP Surveillance Camera and Systems

|                 |                 |                 |            |               |
|-----------------|-----------------|-----------------|------------|---------------|
| <b>\$69,067</b> | <b>\$64,137</b> | <b>\$61,843</b> | <b>\$0</b> | <b>89.54%</b> |
|-----------------|-----------------|-----------------|------------|---------------|

#### 394-9520 Villa Park HS Science Center

##### 1. Design Cost

##### 1.01 Architect

|   |                    |                    |                    |                 |               |
|---|--------------------|--------------------|--------------------|-----------------|---------------|
| DKS ASSOCIATES (Specialty Consulting - Traffic Engineering) | \$78,310           | \$78,310           | \$14,400           | \$14,400        | 18.39%        |
| LIONAKIS (Program Master Specifications)                    | \$14,059           | \$14,059           | \$14,059           | \$0             | 100.00%       |
| LPA INC (Architect of Record)                               | \$2,221,358        | \$2,221,358        | \$1,490,148        | \$0             | 67.08%        |
| UNCOMMITTED   | \$265,403          |                    |                    |                 |               |
|   | <b>\$2,579,130</b> | <b>\$2,313,727</b> | <b>\$1,518,607</b> | <b>\$14,400</b> | <b>58.88%</b> |

##### 2. Construction Cost

##### 2.01 Construction

UNCOMMITTED

|                     |            |            |            |            |              |
|---------------------|------------|------------|------------|------------|--------------|
| \$23,997,000        |            |            |            |            |              |
| <b>\$23,997,000</b> | <b>\$0</b> | <b>\$0</b> | <b>\$0</b> | <b>\$0</b> | <b>0.00%</b> |

##### 3. Program and Construction Management

##### 3.01 Program Management Fees

|                               |                    |                  |                  |            |               |
|-------------------------------|--------------------|------------------|------------------|------------|---------------|
| CUMMING CONSTRUCTION MGMT INC | \$566,731          | \$566,731        | \$318,206        | \$0        | 56.15%        |
| UNCOMMITTED                   | \$588,404          |                  |                  |            |               |
|                               | <b>\$1,155,135</b> | <b>\$566,731</b> | <b>\$318,206</b> | <b>\$0</b> | <b>27.55%</b> |

##### 3.02 Construction Management Fees

|                     |                    |                    |                  |                 |               |
|---------------------|--------------------|--------------------|------------------|-----------------|---------------|
| CORDOBA CORPORATION | \$1,744,430        | \$1,744,430        | \$500,070        | \$22,575        | 28.67%        |
|                     | <b>\$1,744,430</b> | <b>\$1,744,430</b> | <b>\$500,070</b> | <b>\$22,575</b> | <b>28.67%</b> |

##### 4. Construction Support Costs

##### 4.01 Rental

|                                   |           |           |     |     |       |
|-----------------------------------|-----------|-----------|-----|-----|-------|
| ELITE MODULAR LEASING & SALES INC | \$381,689 | \$381,689 | \$0 | \$0 | 0.00% |
|-----------------------------------|-----------|-----------|-----|-----|-------|



**Measure S Bond Program**  
**Budget vs Actuals - By School and Budget Category with Vendor Detail**

**Monthly Progress Report January 2019**  
**QSS Data thru 1/31/2019**

|  | Budget           | Year to Date Contracted | Year to Date Expense | Quarterly Expense<br>Jan '19 - Mar '19 | % Expended    |
|--|------------------|-------------------------|----------------------|--|---------------|
| UNCOMMITTED  | \$96,999         |                         |                      |  |               |
| <b>4.02 Title, Environmental, Stormwater Management</b>      | <b>\$478,688</b> | <b>\$381,689</b>        | <b>\$0</b>           | <b>\$0</b>                             | <b>0.00%</b>  |
| CHICAGO TITLE COMPANY  | \$750            | \$750                   | \$750                | \$0                                    | 100.00%       |
| OUSD COST OF INTEREST DISTRIBUTION FY 16/17                  | \$1              | \$1                     | \$1                  | \$0                                    | 100.00%       |
| PLACEWORKS INC   | \$87,059         | \$87,059                | \$73,237             | \$0                                    | 84.12%        |
| UNCOMMITTED  | \$13,840         |                         |                      |  |               |
|  | <b>\$101,650</b> | <b>\$87,810</b>         | <b>\$73,987</b>      | <b>\$0</b>                             | <b>72.79%</b> |
| <b>4.03 Commissioning</b>                                    |                  |                         |                      |  |               |
| P2S ENGINEERING INC  | \$31,635         | \$31,635                | \$3,700              | \$0                                    | 11.70%        |
|  | <b>\$31,635</b>  | <b>\$31,635</b>         | <b>\$3,700</b>       | <b>\$0</b>                             | <b>11.70%</b> |
| <b>4.05 DSA Review Fees</b>                                  |                  |                         |                      |  |               |
| 01 Budget  |                  | \$0                     | \$0                  | \$0                                    | 0.00%         |
| DIVISION OF STATE ARCHITECT                                  | \$249,516        | \$249,516               | \$249,516            | \$38,150                               | 100.00%       |
| UNCOMMITTED  | \$127,582        |                         |                      |  |               |
|  | <b>\$377,098</b> | <b>\$249,516</b>        | <b>\$249,516</b>     | <b>\$38,150</b>                        | <b>66.17%</b> |
| <b>4.06 Postage, Printing &amp; Advertising</b>              |                  |                         |                      |  |               |
| AMERICAN REPROGRAPHICS CO LLC                                | \$15,206         | \$15,206                | \$9,558              | \$119                                  | 62.86%        |
| SOUTHERN CALIFORNIA NEWS GROUP                               | \$3,352          | \$3,352                 | \$1,768              | \$0                                    | 52.74%        |
| UNCOMMITTED  | \$25,637         |                         |                      |  |               |
|  | <b>\$44,195</b>  | <b>\$18,558</b>         | <b>\$11,326</b>      | <b>\$119</b>                           | <b>25.63%</b> |
| <b>4.07 DSA Inspection</b>                                   |                  |                         |                      |  |               |
| UNCOMMITTED  | \$386,707        |                         |                      |  |               |
|  | <b>\$386,707</b> | <b>\$0</b>              | <b>\$0</b>           | <b>\$0</b>                             | <b>0.00%</b>  |
| <b>4.08 DSA Construction Phase Testing</b>                   |                  |                         |                      |  |               |
| NINYO & MOORE  | \$300,000        | \$300,000               | \$0                  | \$0                                    | 0.00%         |
| UNCOMMITTED  | \$86,707         |                         |                      |  |               |
|  | <b>\$386,707</b> | <b>\$300,000</b>        | <b>\$0</b>           | <b>\$0</b>                             | <b>0.00%</b>  |
| <b>4.10 Labor Compliance</b>                                 |                  |                         |                      |  |               |
| UNCOMMITTED  | \$55,244         |                         |                      |  |               |
|  | <b>\$55,244</b>  | <b>\$0</b>              | <b>\$0</b>           | <b>\$0</b>                             | <b>0.00%</b>  |
| <b>4.11 Preliminary Testing (Hazmat, Topo Survey, Geo</b>    |                  |                         |                      |  |               |
| CALIFORNIA GEOLOGICAL SURVEY (Geology and Seismology Review) | \$3,600          | \$3,600                 | \$3,600              | \$0                                    | 100.00%       |
| ENVIRONMENTAL NETWORK CORPORATION (Hazardous Material        | \$3,140          | \$3,140                 | \$0                  | \$0                                    | 0.00%         |
| LEIGHTON CONSULTING INC (Geotechnical Engineering)           | \$20,000         | \$20,000                | \$16,549             | \$0                                    | 82.75%        |
| PSOMAS (Topographical Survey)                                | \$27,000         | \$27,000                | \$21,034             | \$0                                    | 77.90%        |
| RMA GROUP (Utility Location / Mapping)                       | \$26,890         | \$26,890                | \$16,325             | \$0                                    | 60.71%        |
| SPECTRUM FIRE PROTECTION (Fire Hydrant Flow Test)            | \$1,000          | \$1,000                 | \$1,000              | \$0                                    | 100.00%       |
| UNCOMMITTED  | \$377,672        |                         |                      |  |               |
|  | <b>\$459,302</b> | <b>\$81,630</b>         | <b>\$58,508</b>      | <b>\$0</b>                             | <b>12.74%</b> |
| <b>4.12 Utility Connection Fees (with Local Permittin</b>    |                  |                         |                      |  |               |
| UNCOMMITTED  | \$110,488        |                         |                      |  |               |
|  | <b>\$110,488</b> | <b>\$0</b>              | <b>\$0</b>           | <b>\$0</b>                             | <b>0.00%</b>  |



**Measure S Bond Program**  
**Budget vs Actuals - By School and Budget Category with Vendor Detail**

**Monthly Progress Report January 2019**  
**QSS Data thru 1/31/2019**

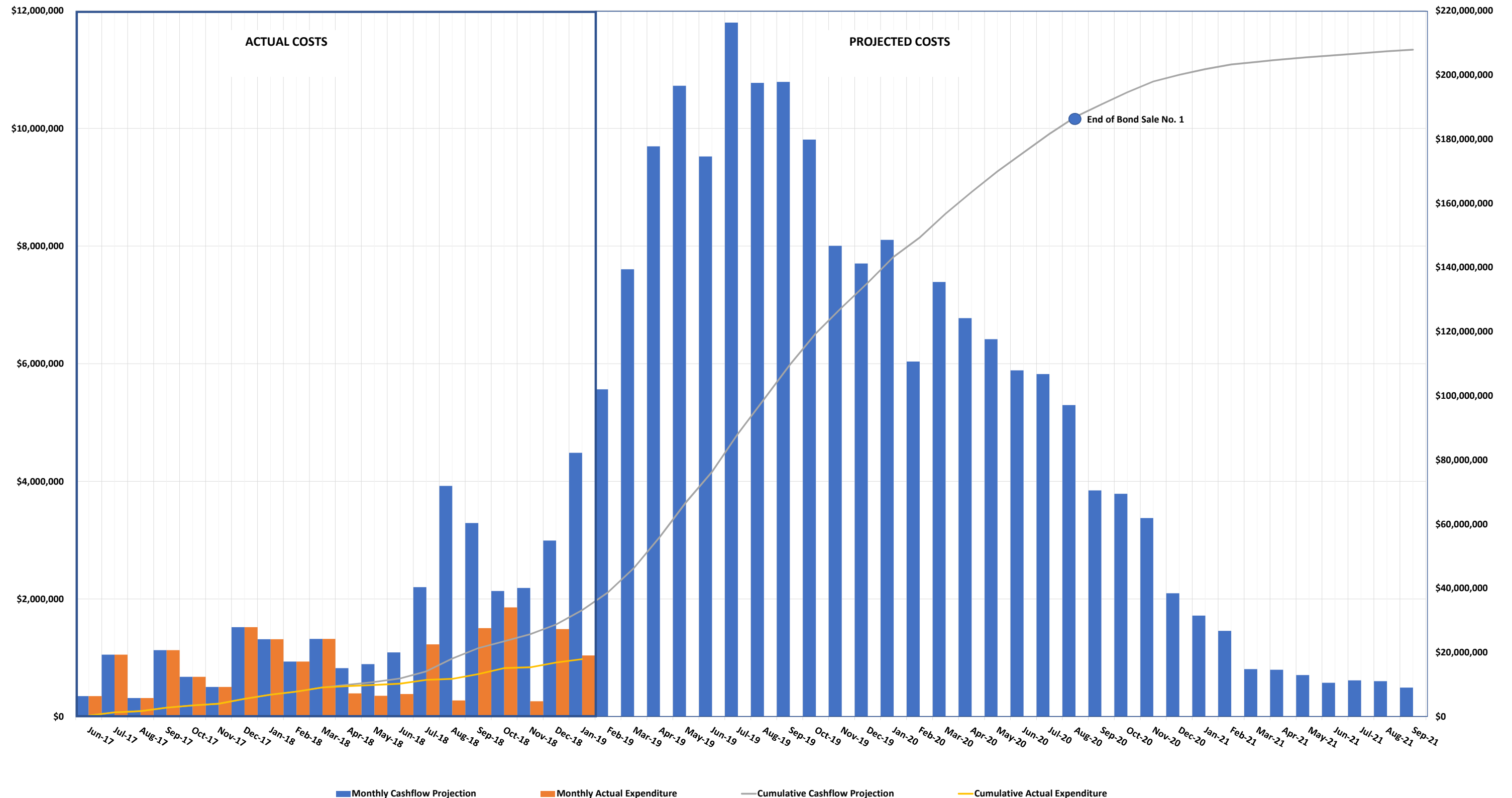
|  | Budget              | Year to Date<br>Contracted | Year to Date<br>Expense | Quarterly<br>Expense<br>Jan '19 - Mar '19 | % Expended   |
|--|---------------------|----------------------------|-------------------------|---|--------------|
| <b>4.13 FF&amp;E (Laboratory Tables and Chairs, other)</b> |                     |                            |                         |   |              |
| UNCOMMITTED  | \$883,903           |                            |                         |   |              |
|  | <b>\$883,903</b>    | <b>\$0</b>                 | <b>\$0</b>              | <b>\$0</b>                                | <b>0.00%</b> |
| <b>4.14 IT Technology Infrastructure</b>                   |                     |                            |                         |   |              |
| UNCOMMITTED  | \$386,707           |                            |                         |   |              |
|  | <b>\$386,707</b>    | <b>\$0</b>                 | <b>\$0</b>              | <b>\$0</b>                                | <b>0.00%</b> |
| <b>4.15 Legal Counsel</b>                                  |                     |                            |                         |   |              |
| UNCOMMITTED  | \$55,244            |                            |                         |   |              |
|  | <b>\$55,244</b>     | <b>\$0</b>                 | <b>\$0</b>              | <b>\$0</b>                                | <b>0.00%</b> |
| <b>5. Contingency</b>                                      |                     |                            |                         |   |              |
| <b>5.02 Construction Contingency</b>                       |                     |                            |                         |   |              |
| UNCOMMITTED  | \$2,399,700         |                            |                         |   |              |
|  | <b>\$2,399,700</b>  | <b>\$0</b>                 | <b>\$0</b>              | <b>\$0</b>                                | <b>0.00%</b> |
| <b>5.02 Project Contingency</b>                            |                     |                            |                         |   |              |
| UNCOMMITTED  | \$9,567,037         |                            |                         |   |              |
|  | <b>\$9,567,037</b>  | <b>\$0</b>                 | <b>\$0</b>              | <b>\$0</b>                                | <b>0.00%</b> |
| <b>Total 394-9520 Villa Park HS Science Center</b>         | <b>\$45,200,000</b> | <b>\$5,775,725</b>         | <b>\$2,733,920</b>      | <b>\$75,244</b>                           | <b>6.05%</b> |
| <b>394-TBD Villa Park Unallocated Funds</b>                |                     |                            |                         |   |              |
| <b>1. Unallocated Bond Funds</b>                           |                     |                            |                         |   |              |
| <b>1.01 Unbudgeted Bond Funds</b>                          |                     |                            |                         |   |              |
| UNCOMMITTED  | \$26,730,933        |                            |                         |   |              |
|  | <b>\$26,730,933</b> | <b>\$0</b>                 | <b>\$0</b>              | <b>\$0</b>                                | <b>0.00%</b> |
| <b>Total 394-TBD Villa Park Unallocated Funds</b>          | <b>\$26,730,933</b> | <b>\$0</b>                 | <b>\$0</b>              | <b>\$0</b>                                | <b>0.00%</b> |
| <b>Villa Park High School</b>                              | <b>\$72,000,000</b> | <b>\$5,839,862</b>         | <b>\$2,795,762</b>      | <b>\$75,244</b>                           | <b>3.88%</b> |

### 3.2 Cash Flow Projections



## MEASURE S BOND PROGRAM - SCIENCE CENTER CASH FLOW PROJECTION

Actual Costs thru January 31, 2019  
Projected Costs thru September 30, 2021

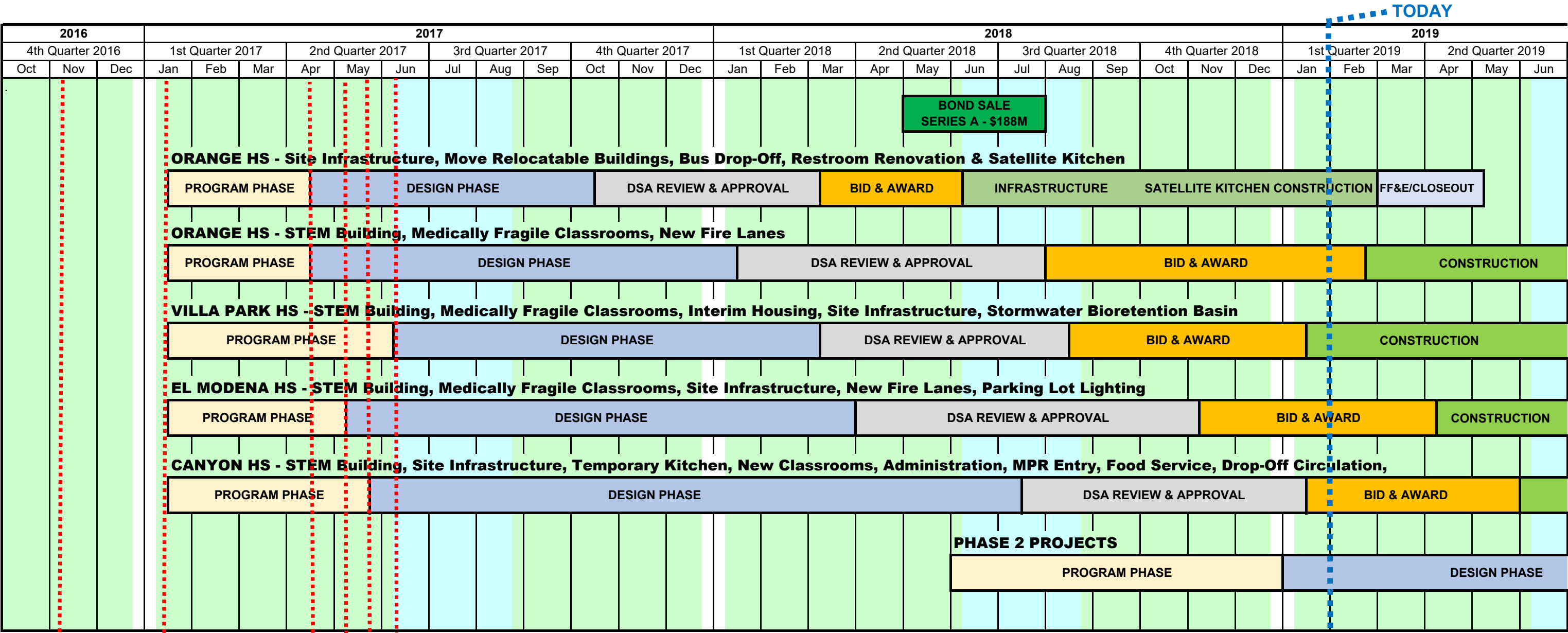




4.0 PROGRAM SCHEDULE SUMMARY



MEASURE S BOND PROGRAM - PROGRAM SCHEDULE SUMMARY



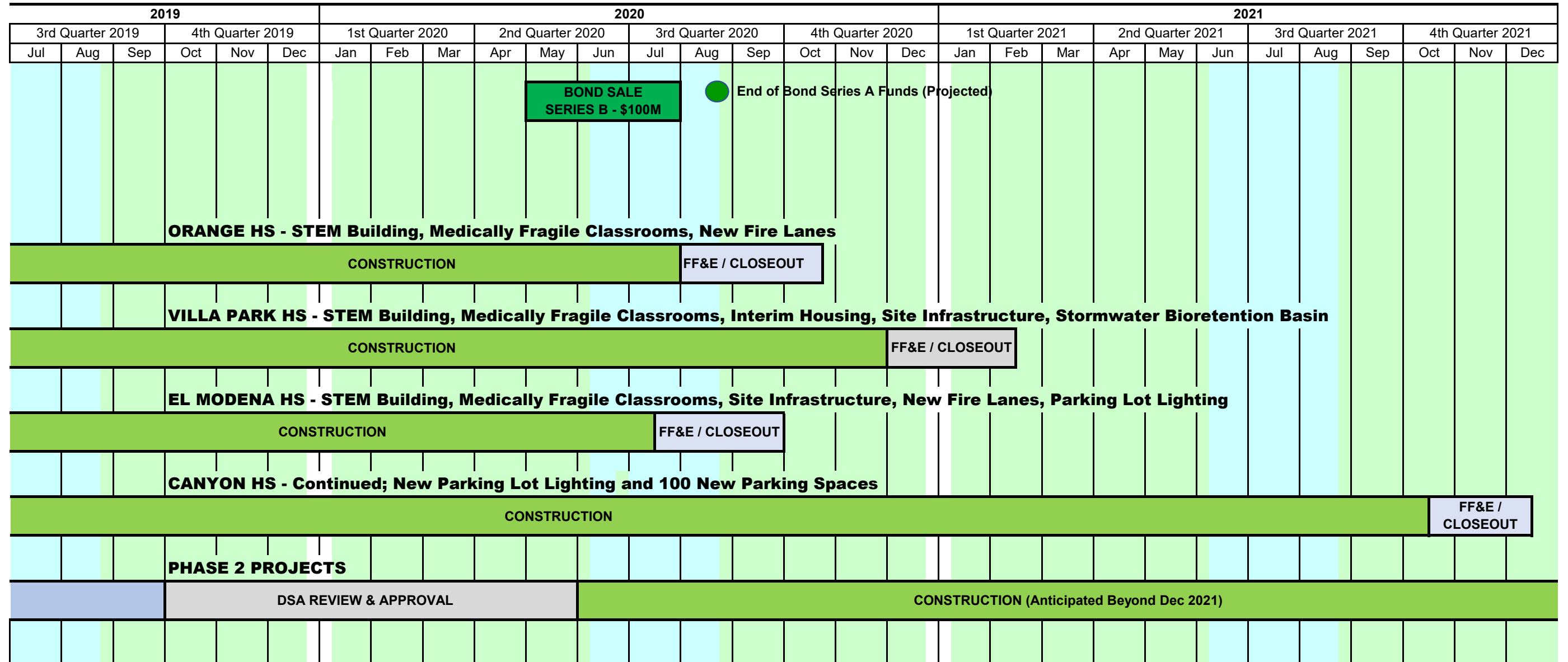
TODAY

TODAY

- Bond Measure S Passes by 62% on 11/8/16
- Program Manager Starts Work 1/17/17
- Orange HS Schematic Design & Budget Approved 4/13/17
- El Modena HS Schematic Design & Budget Approved 5/11/17
- Canyon HS Schematic Design & Budget Approved 5/25/17
- Villa Park HS Schematic Design & Budget Approved 6/8/17



# MEASURE S BOND PROGRAM - PROGRAM SCHEDULE SUMMARY



**Board of Education**

Alexia Deligianni-Brydges, Ed. D, President

Kathryn A. Moffat, Vice-President

Kris Erickson

Andrea Yamasaki

Rick Ledesma

John Ortega

Brenda Lebsack

Gunn Marie Hansen, Ph.D.

**Superintendent**

David A. Rivera

**Assistant Superintendent/CBO**

**Business Services**

Scott Harvey

**Senior Executive Director**

**Administrative Services**



Facilities & Planning Department

Measure S Bond Program

726 W. Collins Avenue

Orange, CA 92867

T: (714) 628-4500