

The SAFETY of our students depends on YOU!

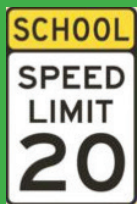


Students are especially vulnerable on the street during arrival and departure times due to the amount of traffic and people in and around schools.

Your school's pick-up and drop-off areas and procedures have been designed to increase the visibility and safety of our students. Know and follow the plan!



And remember to practice safe and courteous driving habits around school for everyone's safety:



Follow speed limits



Avoid U-turns near schools



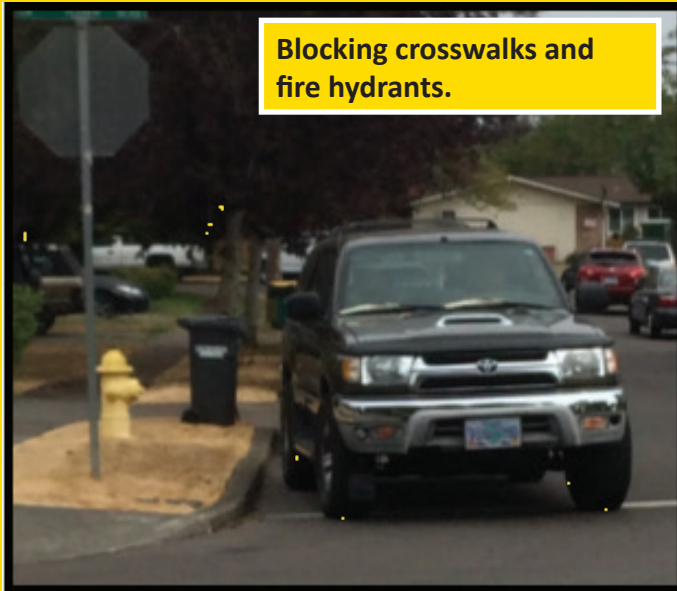
Stop for Crossing Guards



Turn your key to be Idle Free

AVOIDING the traffic violations as shown below will keep our students safe and improve traffic congestion around our schools.

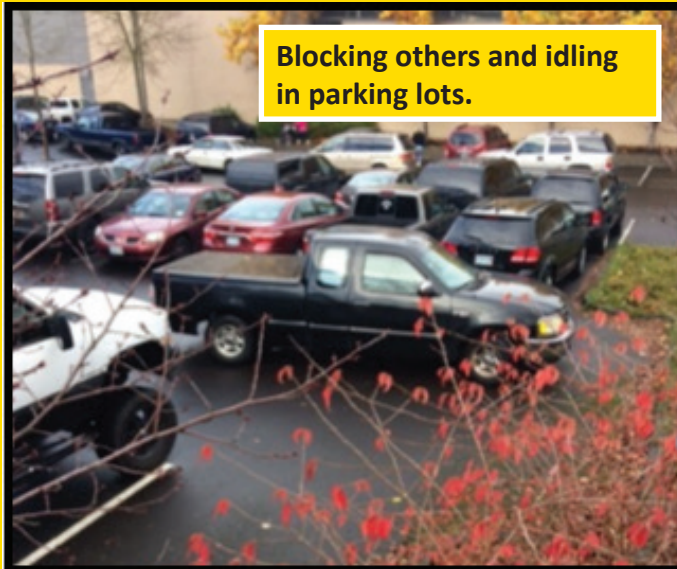
Thank you for doing your part!



Blocking crosswalks and fire hydrants.



Parking the wrong way, blocking driveway & hydrant.



Blocking others and idling in parking lots.



Blocking sidewalks and emergency access.



Parking and blocking through traffic.



Dropping students off into traffic.