



Stratford High School Additions and Renovations

PAT Meeting No. 02

Spring Branch Independent School District \\ Houston, Texas \\ March 18th, 2019



PAT Meeting #02 (3:15pm to 4:45pm)

- Project Recap
- Guiding principals
- Priority programming
- PAT Review
- Next Steps
- Meeting Adjourned at 4:45pm

Project Recap



PAT 01

02-28-2019

KICK-OFF

- Fact Finding Review
- Gather Data
- Establish Guiding Principles

PAT 02

03-18-2019

PROG

- Floor Plan improvements
- Auditorium plan review
- Site Improvements

PAT 03

04-03-2019

SD

- Refine Layout Options
- Acoustical consultant

PAT 04

04-25-2019

SD

- Refine Layout Options
- Volumetric exterior concepts

PAT 05

05-16-2019

DD

- Refine Exterior Design
- Start Interior Design

S U M M E R
B R E A K

PAT 06

08-21-2019

DD

- Review Overall Design
- Present Exterior and Interior imagery
- Review finishes

PAT 07

09-04-2019

CD 25%

- Review Overall Design
- Review Finishes

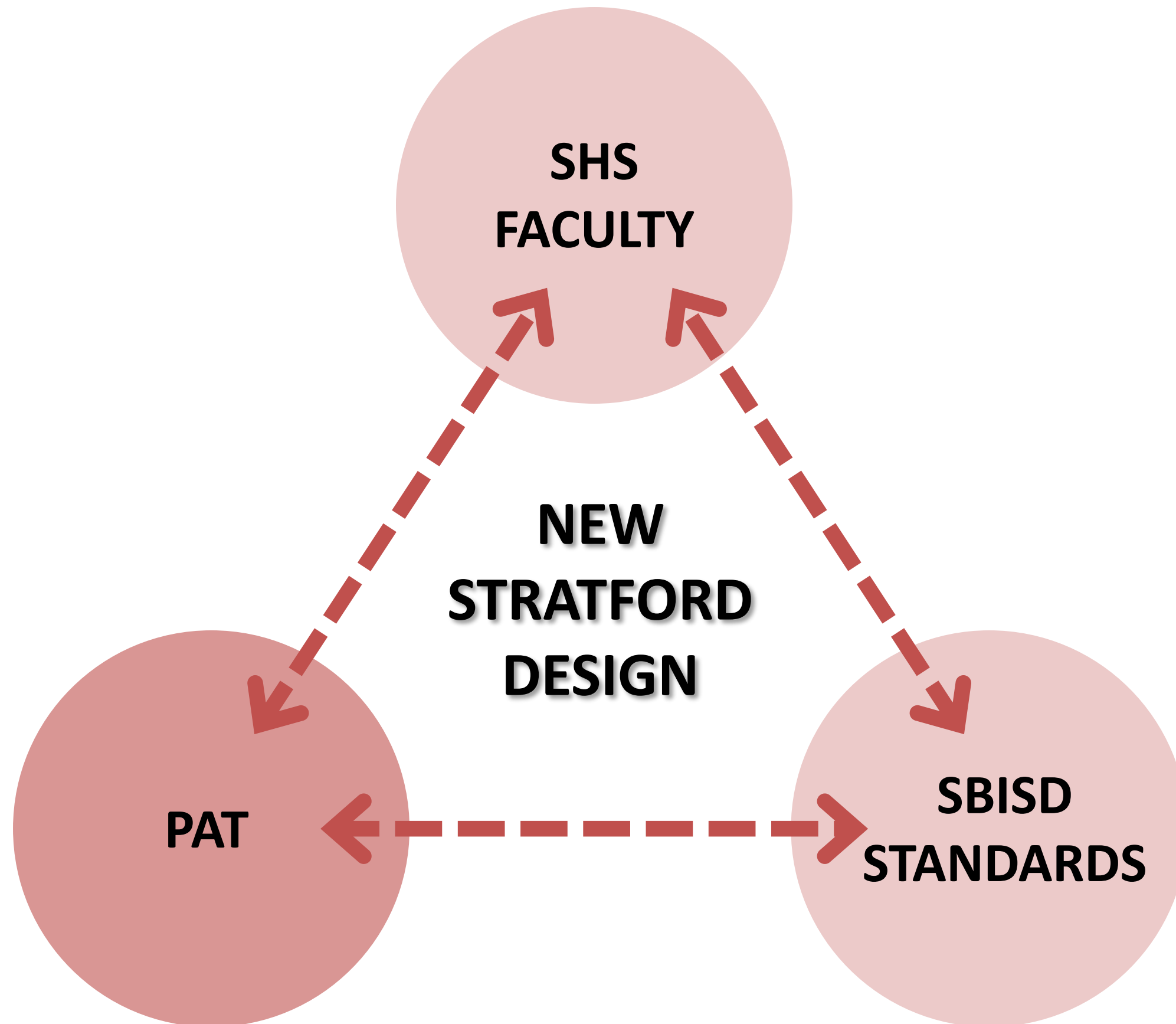
Goal

The goal of the PAT is to ensure that parents, staff and community members have the opportunity to take part in the planning and design of new schools. The PAT members will **serve as communicators** to and from the community during the schematic design and development phases of the project and participate in discussions that will lead to recommendations. The PAT concludes its work once construction begins.

Charge

Each Project Advisory Team's (PAT) members are charged with **providing input into planning and design development** for their school's new construction or major renovation project in the 2017 Bond Program. The PAT will meet as needed throughout the project, from initial planning, through design to the start of construction. Meeting agendas and minutes will be posted on the school's bond project website.

- **New 1,000 seat Auditorium**
- **Mechanical/ HVAC System Upgrades;** for better comfort control in hallways and classrooms
- **Exterior/ Interior Upgrades:**
 - Safety and security (fire alarms, burglar and access control)
 - Meet Education Specifications (replacement of student furniture, evaluate lighting, door hardware, flooring)
 - Exterior power wash, building envelope
- **Site Improvements** (Safety lighting and parking pavement)
- **Roof Systems;** replacement
- **Athletic Upgrades;** (Resurface track, tennis courts, & field refurbishment. Upgrades will be addressed as needed)



- Involved **Community**
- School is a **Community** hub
- No meeting spaces on campus
- Desire **Openness**
- Way-finding** is not organized
- No **open** look and feel
- Remove lockers
- Balance **true needs** of SHS



Meeting Minutes

Project Name: Stratford High School Renovations	Meeting Date and Time:
Project Number: 18148	Meeting Location: Stratford HS
Owner: Spring Branch ISD	Owner's Designated Representative: Kris Drosche
Meeting Description: SHS - Meeting with Principal #1	Report Date and Author: 11/15/2018 Max Buja

- Representatives from Campus: Principal, Social Studies, Science Representatives, & Foreign Language.
- Travis outlined bond program and anticipated project scope. Refurbish, renovate, and replace particular items.
- Replacement parking lot lighting (former solar lighting).
- Major roof replacement project.
- New classroom and teacher furniture (by separate project).
- Turf athletic field (by PBK within project).
- Athletic improvement budget (set aside for improvements now or in future).
- New auditorium, possibly in location of existing auditorium or going in similar location.
- Rusty Hess and SHS Fine Arts Group to be engaged about design process.
- Design parameter for considerations: Detention, Displaced Parking.
- Involved community – parent involvement is high.
- Stratford Playhouse is popular and successful component.
- Music and Fine Arts programs are popular.
- Students ride bus to Guthrie.
- Safety & Security there needs to be a way to work hand in hand with a very active campus.
- The “back” of the school is the “front” and most activity (kid traffic) comes from back parking lots.
- Front is for visitors.
- School is a community hub. Constant activities on campus.
- No meeting spaces on campus; one small conference room (10 people), the auditorium, and the library (the only in-between space). Mid-sized groups 15-20 people will need to go to library. This type of space would be desired by campus for LGI flexible usage.
- Library gets “shut down” from students commonly for group meetings, testing, etc.
- Idea suggested to convert auditorium to LGI and constructing auditorium in alternate location on site.
- Desire to incorporate LGI space and flexible use.
- SHS has a bit of an identity crisis being all “hallways and closed doors”.
- Pulse of community and campus is collaboration, small groups, clubs, and learning mentality.
- Desire openness and flexible learning and community spaces.
- Look at entry and entry identification in back where students/campus enter.
- Less lockers or no lockers is desired. 50-75 total lockers currently utilized.
- SHS has many teachers that float which is a burden on entire campus.
- Close off entire library? Large group areas inside library?
- SBAI, Spring Branch Academic Institute will need to be defined and PBK educated about this program.
- Athletic facilities in dire need of renovations.
- Both gyms and courts are in poor shape as are locker rooms.



flooring needs to be looked at and was noted to be in poor condition.
select hallways – look at versus usable SF and environment.
not organized and ideal; would appreciate new signage.
inance, Academy of Science and Engineering.
if a “Club” important to potential and current students attending.
Math are not adjacent to one another – look at program and layout of existing

lubs are numerous and well participated in; however a clear lack of storage on

against community feel – departments are all “isolated” and rarely interact.
and feel – too many interior hallways.
is to create openness to improve benefit ‘look and feel’ doors facing common areas
not others (such as social studies).
ys and hall entries/doors to be more flexible.
rovide multiple small flex areas and collaboration points with small groups, tables,

blems are prevalent. Electrical has gone down to half of school multiple times
in gym have gone out multiple times.
room conditions vary greatly.
g with T&B should be reviewed.
iphy (related to art) journalism and business – Guthrie Center handles large
h as cosmetology.
ot organized ideally.
‘If you could make a change at SHS what would it be?’
ition corridors and remove lockers to free up usable space.
e enlarged meeting area on site for use by various groups/sizes. Move voting
r? Signify prominence.
ase positive reasons to visit SHS reaching lower socio-economic constituency (with
es, programs, group exercises, language, etc).
al collaborative spaces for students to harbor ownership and responsibility.
cing true needs of SHS in all areas of school vs excessively equipped auditorium.
ure to be appropriate for collaboration, reconfiguration.
ice security improvements interior and exterior to be effective and thoughtful to work
w/campus.

t up with same group and potentially additional individuals.



- Playhouse season ticket holders
- Auditorium is central to campus
- Need an LGI
- Need offices and storage
- Floating teachers
- Secure main lobby
- Feels too institutional
- Create Counselor suite



Meeting Minutes

Project Name: Stratford High School Renovations	Meeting Date and Time:
Project Number: 18148	Meeting Location: Stratford HS
Owner: Spring Branch ISD	Owner's Designated Representative: Kris Drasche
Meeting Description: SHS - Meeting with Principal #2	Report Date and Author: 1/22/2019 Max Buja



Stratford HS Campus Review

1. Introductions
2. Travis, Kris – P&C
3. Chad, Principal
4. D. White, Counselor
5. Pam, Assoc. Principal
6. Lynne, Director SB Institute
7. Valerie, 9th Gr Principal
8. David, Director Tech Theater
9. Kristi Schaper, CTE Teacher
10. William Hall, Math & Engineering
11. Shelby, Librarian
12. Project Scope-Roof, Turf Field, Auditorium, Major Renovations & Interiors work.
13. Classroom Furniture (Future Separate Project).
14. Current 750 seat auditorium. Request and need to keep current auditorium seating during construction.
15. 500 participants in current programs.
16. Previous events there have had folding chairs brought inside the space to allow for additional seating.
17. Plays are “extra-curricular” because of other programs that students participate in.
18. Heavy participation from community.
19. Theater, Orchestra
20. Several hundred season ticket holders.
21. Gala fundraiser this week for Theater Booster Club (multiple enormous events) compete against varsity football events.
22. Auditorium is central to campus use and highly used.
23. UL hosted events – every UIL events for one act plays and large events.
24. No current multipurpose space at SHS. Use auditorium, library, or dining space therefore auditorium is commonly occupied.
25. Parent meetings that coincide with production, rehearsals, or other events. The set is there and this results in limited usable space within auditorium.
26. Medium sized space ideally would house 100-150 people (multi-use space).



ce of CTE but has been asked to leave – he has been moving around
and the Ag Center. ROTC, Culinary, Film, Cosmetology, Film Making,
antage of all at Guthrie Center.
for engineering dept.
d requires replacement of select equipment.
ve loop was added in previous renovation and while small made a

as – ramp is on the East side only 7 buses used limited bus for main
buses throughout the day for other programs will use the front
rop off on Fern Drive.
ed except front door (as of last year) so front is active and students
ad to walk around building to front door.
problematic – no temporary classrooms except for 3rd rubber gym
al needs. To get to rubber gym you have to go outside then back
hat line to protect pedestrians from main building out to the 3rd
unlocked. Canopy would be wanted/helpful. All PE classes are
PE students are affected.
th a gap in between (one class)
rpose room, frequently used, commonly shut down. Technology
eacher luncheons, students eat.
library varying use but up to almost 100. Fire Marshal limit at 72.
testing, and regular testing.
ias 3 classrooms and a small work based utility area. Pretty old and

or severe autistic only at select campuses throughout district.
red.
y, of varied age, and poorly supports student useage and function.
osed off with many doors and hallways constricting spaces.
hout campus to help wayfinding, campus pride, organization.
s to make the school less institutional
tc. scattered throughout building.
ar, 90 degree turns can we “SOFTEN” the campus?
it SHS:
ited / LGI for larger group
pace, & Storage Added

nd Intimate Auditorium Integrated in Campus (Not on an Island)
ig Auditorium – capture smaller targets and needs throughout

- Better clearly identify where you enter Stratford. Large auditorium with 3 larger group spaces.
- Need added storage. Get rid of or use multiple balconies.
- Classrooms and LGI added.



Stratford High School Additions and Renovations

Rating of Fact-Finding Items

On behalf of the entire **PRK** Team, we thank you for this opportunity!
"Committed to Learning. Working Together. Enriching Lives."- SHS



Stratford High School Additions and Renovations

Rating of the Fact-Finding Items

- B Heavy Community involvement
- B School is a community "hub", constant activity on campus
- A Auditorium central to campus, highly used
- A Performing arts program very popular, equal to football
- A Several hundred season ticket holders for the Playhouse
- B UIL hosted events in the Auditorium
- B Front entry lacks presence towards street
- A Back entry is heavy used (students), front only visitors/ parents
- A Balance security with campus openness and student flow
- A School doors locked all day
- A No secure vestibule
- B 3rd gym/ training room exterior access only
- C School lacks clear way-finding
- C Define school academies
- B Parents and visitors "lost" in campus
- A Huddle areas for the team. Room located on main, student place to meet, a generation is new

On behalf of the entire **PRK** Team, we thank you for this opportunity!
"Committed to Learning. Working Together. Enriching Lives."- SHS



Stratford High School Additions and Renovations

Rating of the Fact-Finding Items

- A Heavy Community involvement
- A School is a community "hub", constant activity on campus
- A Auditorium central to campus, highly used
- A Performing arts program very popular, equal to football
- A Several hundred season ticket holders for the Playhouse
- A UIL hosted events in the Auditorium
- C Front entry lacks presence towards street
- B Back entry is heavy used (students), front only visitors/ parents
- B Balance security with campus openness and student flow
- A School doors locked all day
- A No secure vestibule ✓ see note
- B 3rd gym/ training room exterior access only
- C School lacks clear way-finding - would be better
- C Define school academies
- B Parents and visitors "lost" in campus

On behalf of the entire **PRK** Team, we thank you for this opportunity!
"Committed to Learning. Working Together. Enriching Lives."- SHS



Stratford High School Additions and Renovations

Rating of the Fact-Finding Items

- Heavy Community involvement
- School is a community "hub", constant activity on campus
- A Auditorium central to campus, highly used
- A Performing arts program very popular, equal to football
- Several hundred season ticket holders for the Playhouse
- UIL hosted events in the Auditorium
- B Front entry lacks presence towards street
- A Back entry is heavy used (students), front only visitors/ parents
- A Balance security with campus openness and student flow
- A School doors locked all day
- A No secure vestibule
- B 3rd gym/ training room exterior access only
- B School lacks clear way-finding
- C Define school academies
- B Parents and visitors "lost" in campus

new elevators
slippery floors in outside
fix drainage front of school
fix spartan signs for volleyball
paint hallway
hallway lights are not
ramp between first floor

On behalf of the entire **PRK** Team, we thank you for this opportunity!
"Committed to Learning. Working Together. Enriching Lives."- SHS



Stratford High School Additions and Renovations

Rating of the Fact-Finding Items

- A Heavy Community involvement
- A School is a community "hub", constant activity on campus
- A Auditorium central to campus, highly used
- A Performing arts program very popular, equal to football
- B Several hundred season ticket holders for the Playhouse
- B UIL hosted events in the Auditorium
- A Front entry lacks presence towards street
- A Back entry is heavy used (students), front only visitors/ parents
- A Balance security with campus openness and student flow
- A School doors locked all day
- A No secure vestibule
- A 3rd gym/ training room exterior access only
- B School lacks clear way-finding
- Define school academies - not in this scope
- B Parents and visitors "lost" in campus

A STORAGE FOR SPORTS (STUDENTS EQUIPMENT) ON MAIN FLOOR (E.G. GOLF CLUBS) - THEY HAVE TO USE THEM AT THE END OF THE SCHOOL DAY.
A: Accessible to all (auditorium / cafeteria etc)
B Better parking out in the front of the building. There is never open parking for parents for pick up.
B: Fence around parking areas (trash lots)?
B Staircases - some open some closed.
better staircase in the cafeteria area - would look & function so much better

- B School lacks gathering areas
- A Incorporate large and medium instructional areas
- B Desire openness and interconnectedness across campus
- A Provide flexible and collaborative areas
- A Create spaces that harbor ownership and responsibility
- B Provide flexible furniture to enhance collaboration
- A Lack storage across campus (see below) - perhaps join with the third gym (make it secure)
- A Need additional admin offices
- A Create counselor suite
- A Remove lockers, underutilized (50 to 75 units used)
- A 8 teachers are currently "floating" - use to create classrooms
- C SBAI (Spring Branch Academic Institute) specific needs
- A Several HVAC issues across the campus
- A Technology upgrades needed across campus

Priority Legend

On the left of each Fact-Finding statement, please rate from A to B (A being the highest priority and C being the lowest priority)

- A = High Priority
- B = Medium Priority
- C = Low Priority

Additional Comments

A Technology & electrical etc
go together
storage / make a new space
A "new" b/c they could "go anywhere" comment
If SBAM does not utilize the SBA staff why do they not use the space @ SBA's? There is space (or was) at that campus & then the students are with their age peers & bus costs. Just curious...

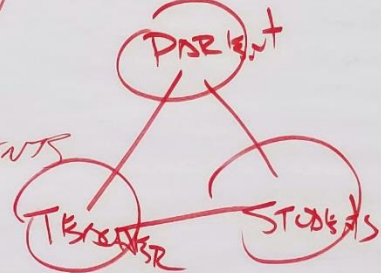
What makes SHS^{SI}
STRATFORD?

- Community/FAMILY

"BLOOD RUNS GREEN"

- SUPPORT

TEACHERS/STAFF/PARENTS
COMMUNITY



- SMALL TOWN IDENTITY

ALUMNI GHOST/PRESENCE

* WELCOMING BACK

- FAMILY TIES THROUGHOUT SBISD

→ APPROACH: LONG TERM, LONG LASTING

- GOING TO HAVE LUNCH NEXT YR → SPACE

Community LSOI

PRIDE

TRADITION

EDUCATION ↑
QUALITY ENHANCE

FINE ARTS HUB!

ACCESSIBLE TO ALL!

- ACCESSIBILITY

- FLOORING SLIPPERY

- OLD LOCKERS

- EXT STORAGE AREAS

- SWIMMER LOCKERS

- STUDENTS OPS @ PHYSYHOUSES

- STAIR-WAY FINDING

- 1 to 1 DEVICE SUPPORT

- POWER @ CLASSROOMS

BETTER LAYOUT - DATA, WIRELESS, POWER, & TECH.
SUPPORTING CURRICULUM & TEACHING.

- INCLUSION

Are we going in the right direction for the Stratford High School Additions and Renovations Design after PAT #01?

0 2 5

yes



100%

no



0%

Guiding Principles



Community Involvement for Success

Neighborhood Institution that offers opportunities to all and hosts a wide arrange of community engagements with a special focus to the fine arts.

An Environment of Academic Excellence

Uphold and evolve higher educational performance through the introduction of versatile and flexible gathering areas.

A Place for Everyone

Create an environment that celebrates everyone and provides accessibility to all.

Safety Fosters Success

A secure campus that fosters an environment where students, teachers and staff can succeed.

A Culture of Tradition and Pride

Maintain the traditions that provide a sense of pride and honor to the school and community.

Priority Programming

COMMUNITY

- **Heavy Community involvement**
- **School is a community “hub”, constant activity on campus**
- **Auditorium central to campus, highly used**

PERFORMING ARTS

- **Performing arts program very popular, equal to football**
- **Several hundred season ticket holders for the Playhouse**
- **UIL hosted events in the Auditorium**

SITE / SECURITY

- **Front entry lacks presence towards street**
- **Back entry is heavy used (students), front only visitors/parents**
- **Balance security with campus openness and student flow**
- **School doors locked all day**
- **No secure vestibule**
- **3rd gym/training room exterior access only**

WAY-FINDING

- School lacks clear way-finding
- Define school academies
- Parents and visitors “lost” in campus

COLLABORATIVE
ENVIROMENTS

- **School lacks gathering areas**
- **Incorporate large and medium instructional areas**
- **Desire openness and interconnectedness across campus**
- Provide flexible and collaborative areas
- Create spaces that harbor ownership and responsibility
- **Provide appropriate flexible furniture that enhances collaboration**

CAMPUS
ENHANCEMENT

- **Lack storage across campus**
- Need additional admin. offices
- **Create counselor suite**
- **Remove lockers, underutilized (50 to 75 units used)**
- **8 teachers are currently “floating”**
- SBAI (Spring Branch Academic Institute) specific needs
- **Several HVAC issues across the campus**
- **Technology upgrades needed across campus**
- “Fix” Stairs and Elevator issues

Priority A

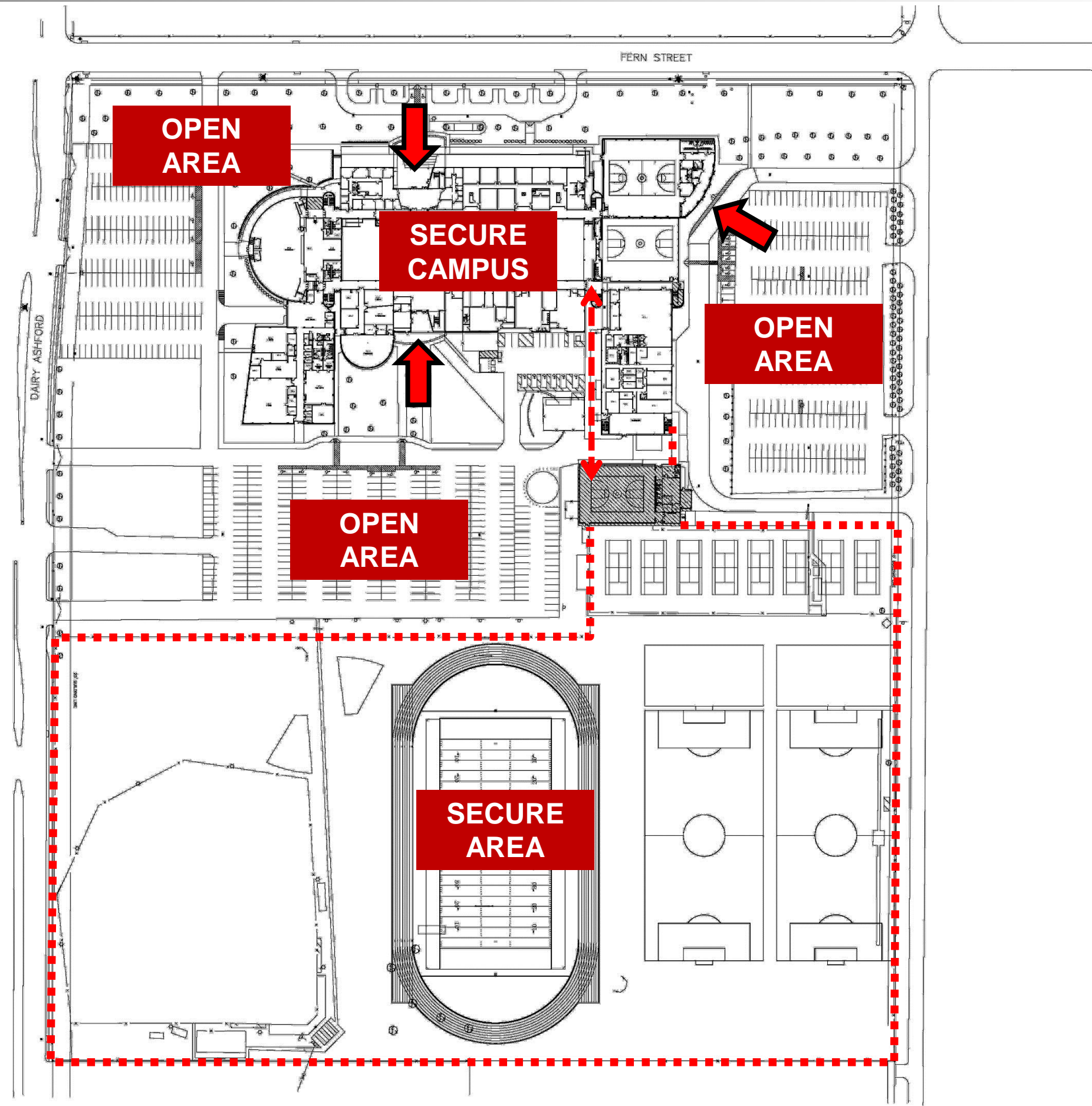
1. Campus Security
2. HVAC/ Tech Campus Enhancement
3. Gathering Areas, Openness and Interconnectedness
4. New Auditorium/ Community “Hub”

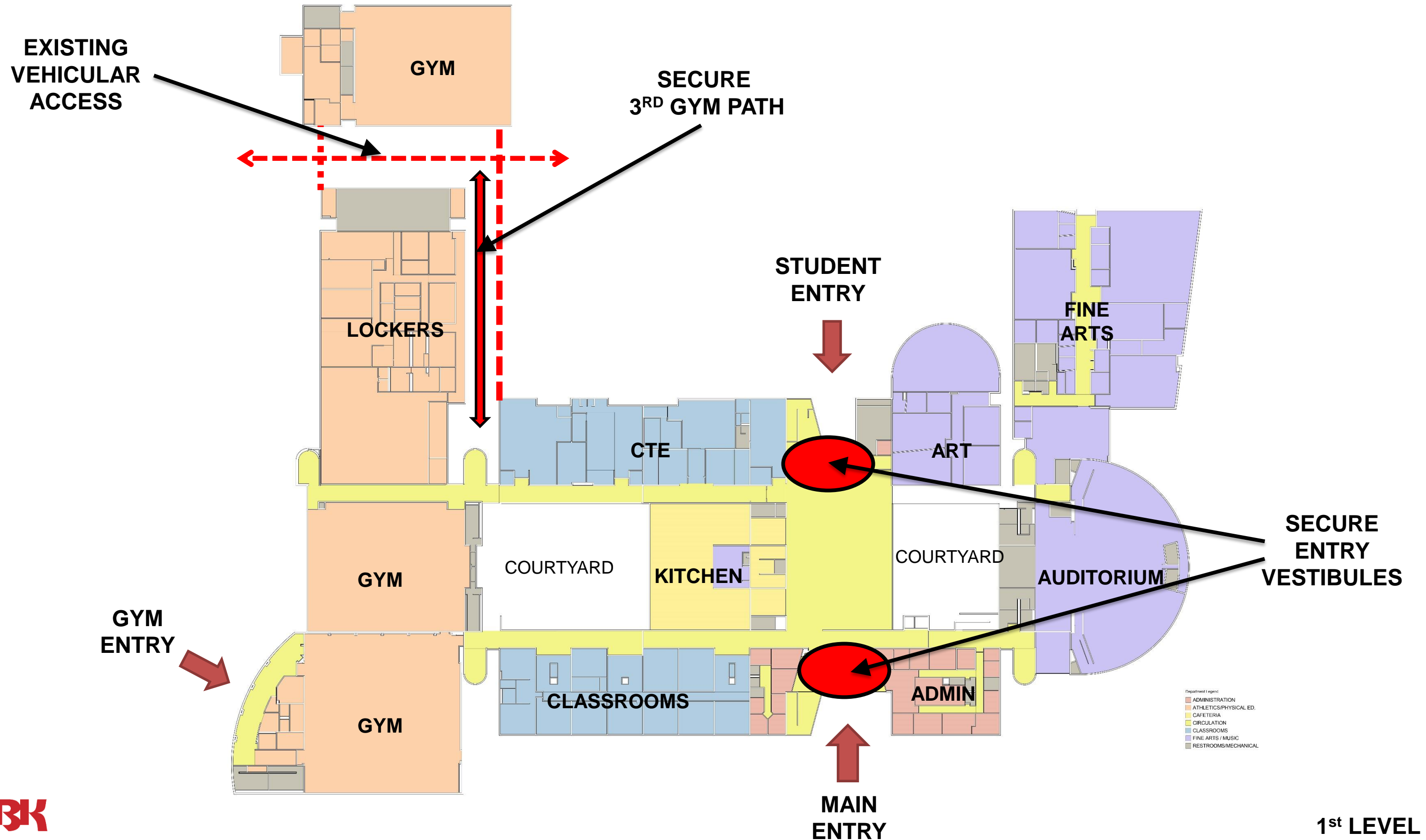
Priority B

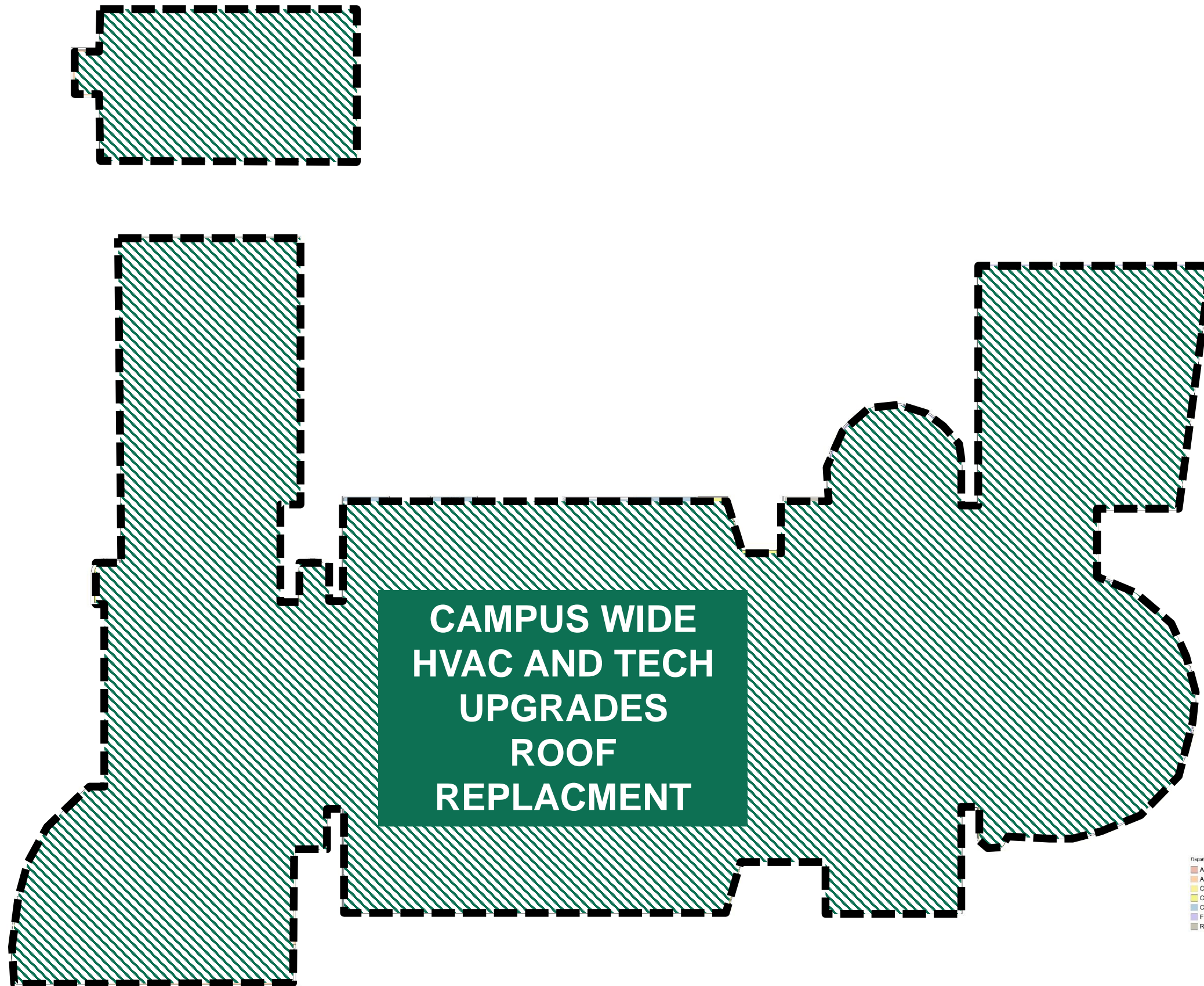
1. Remove Lockers
2. “Floating” Teachers Issues
3. Lack of Storage
4. Counselor Suite

Priority C

1. Additional Admin Offices
2. Way-finding/ Academies
3. Fix Stairs and Elevator
4. SBAI needs





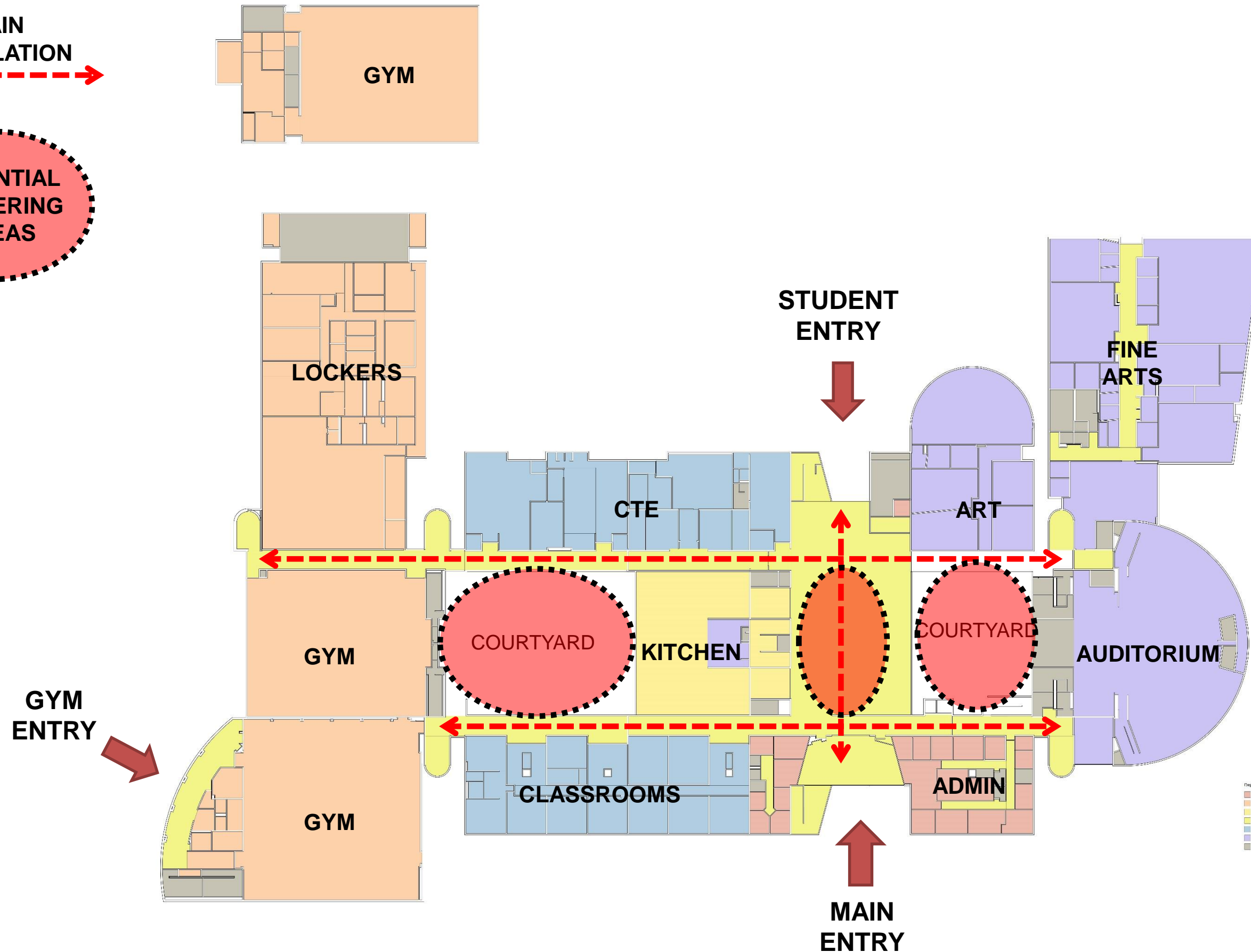


Department Legend:

- ADMINISTRATION
- ATHLETICS/PHYSICAL ED.
- CAFETERIA
- CIRCULATION
- CLASSROOMS
- FINE ARTS / MUSIC
- RESTROOMS/MECHANICAL

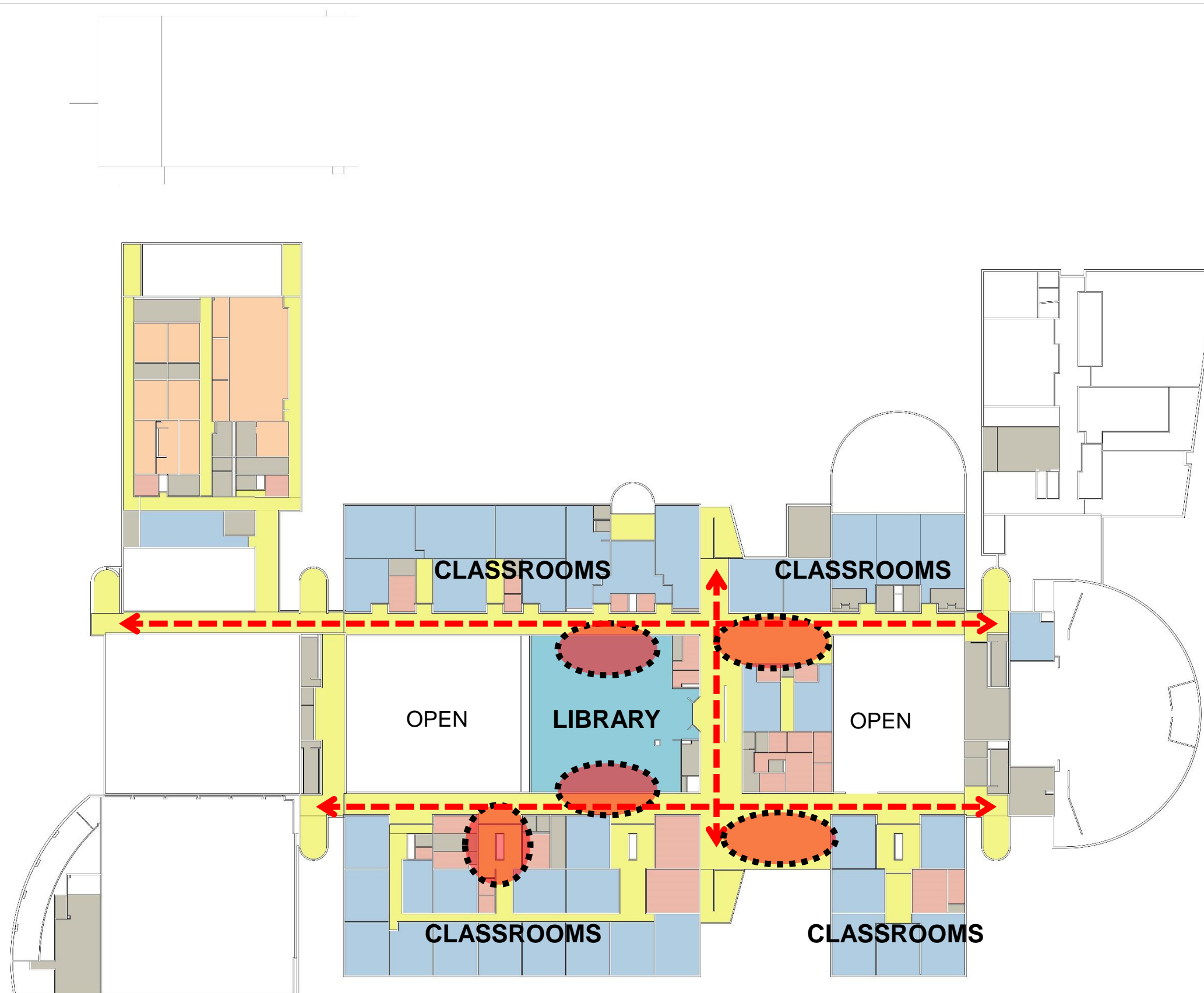
**MAIN
CIRCULATION**

**POTENTIAL
GATHERING
AREAS**



**MAIN
CIRCULATION**

**POTENTIAL
GATHERING
AREAS**

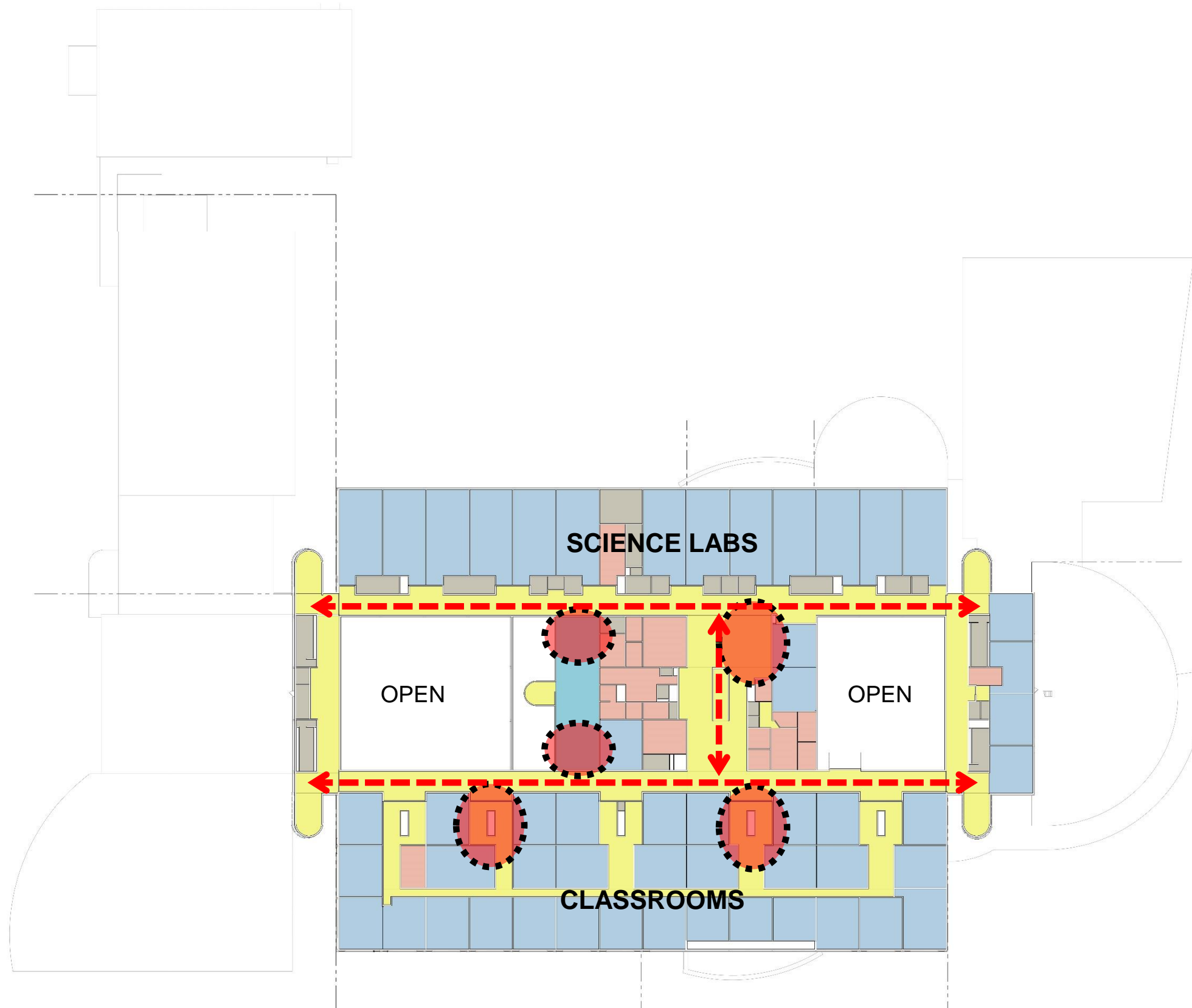


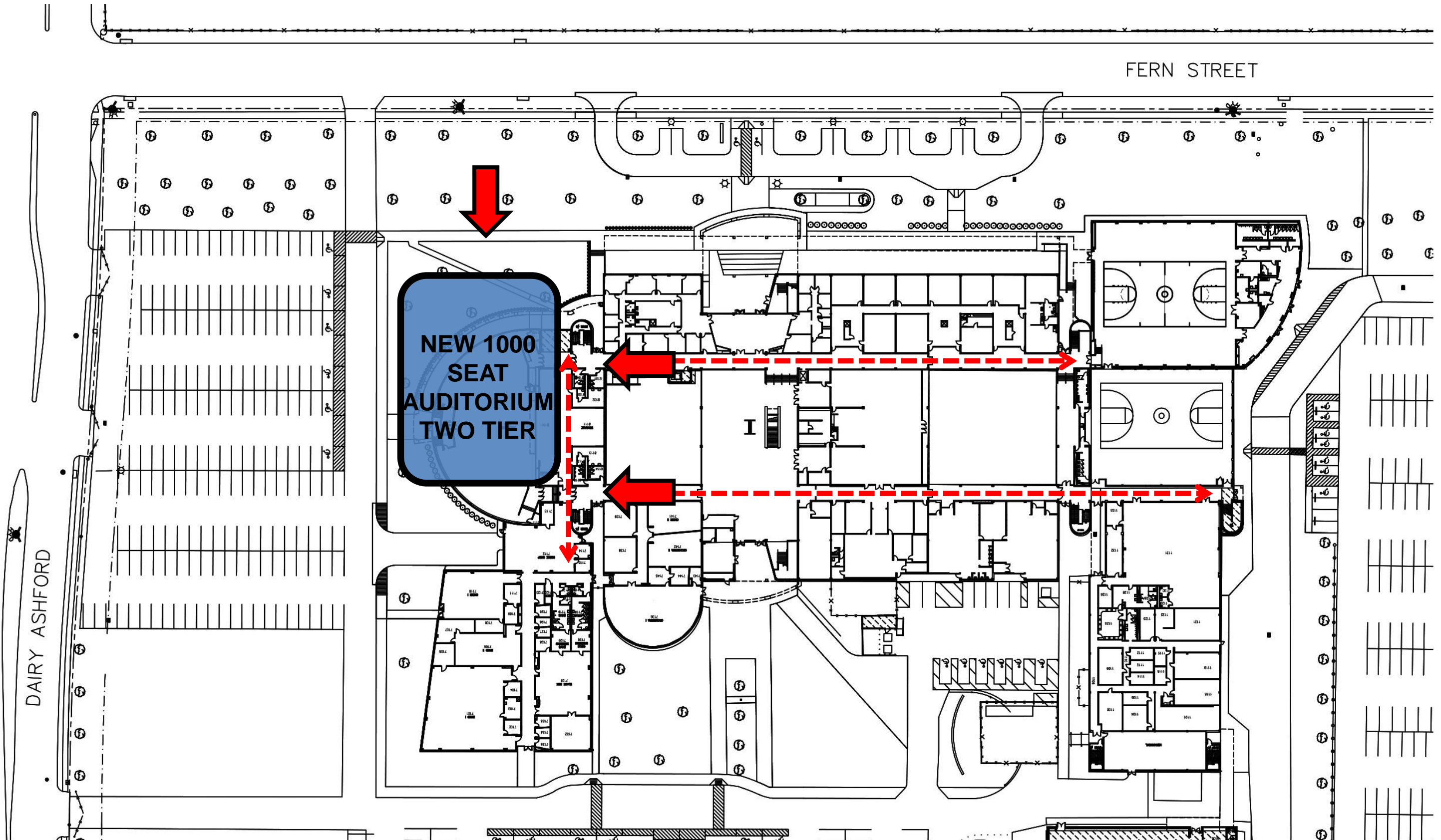
Department Legend

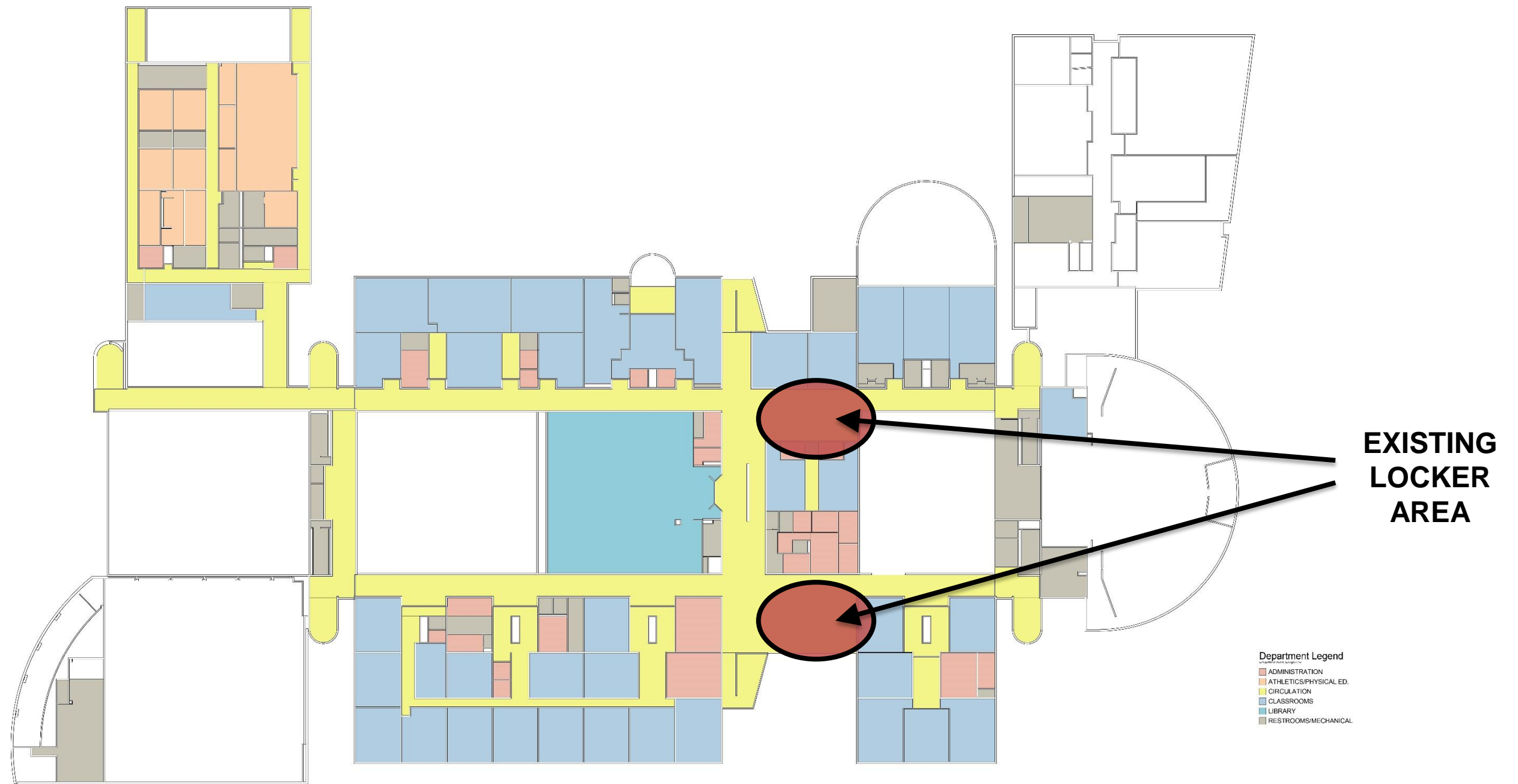
- ADMINISTRATION
- ATHLETICS/PHYSICAL ED.
- CIRCULATION
- CLASSROOMS
- LIBRARY
- RESTROOMS/MECHANICAL

**MAIN
CIRCULATION**

**POTENTIAL
GATHERING
AREAS**



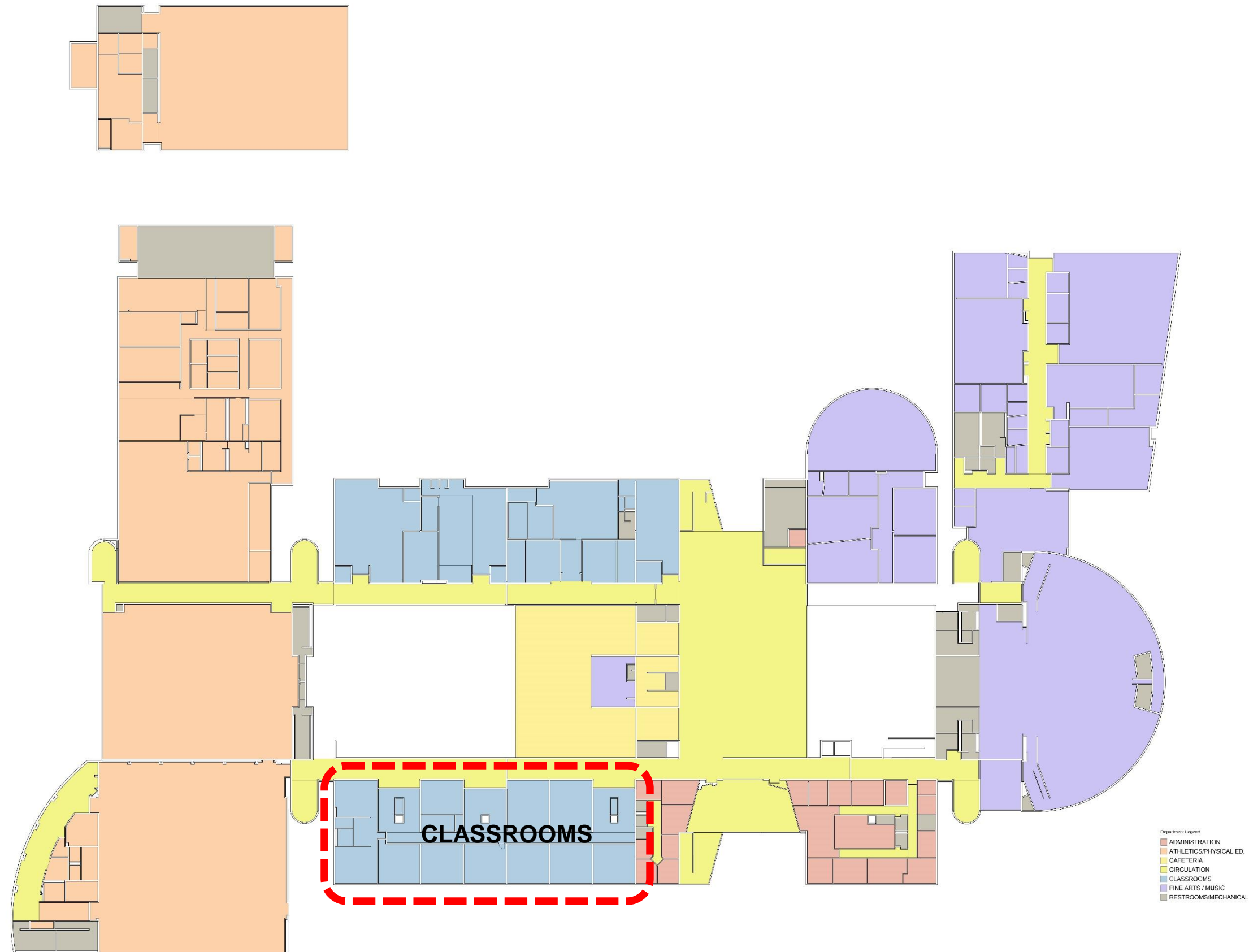


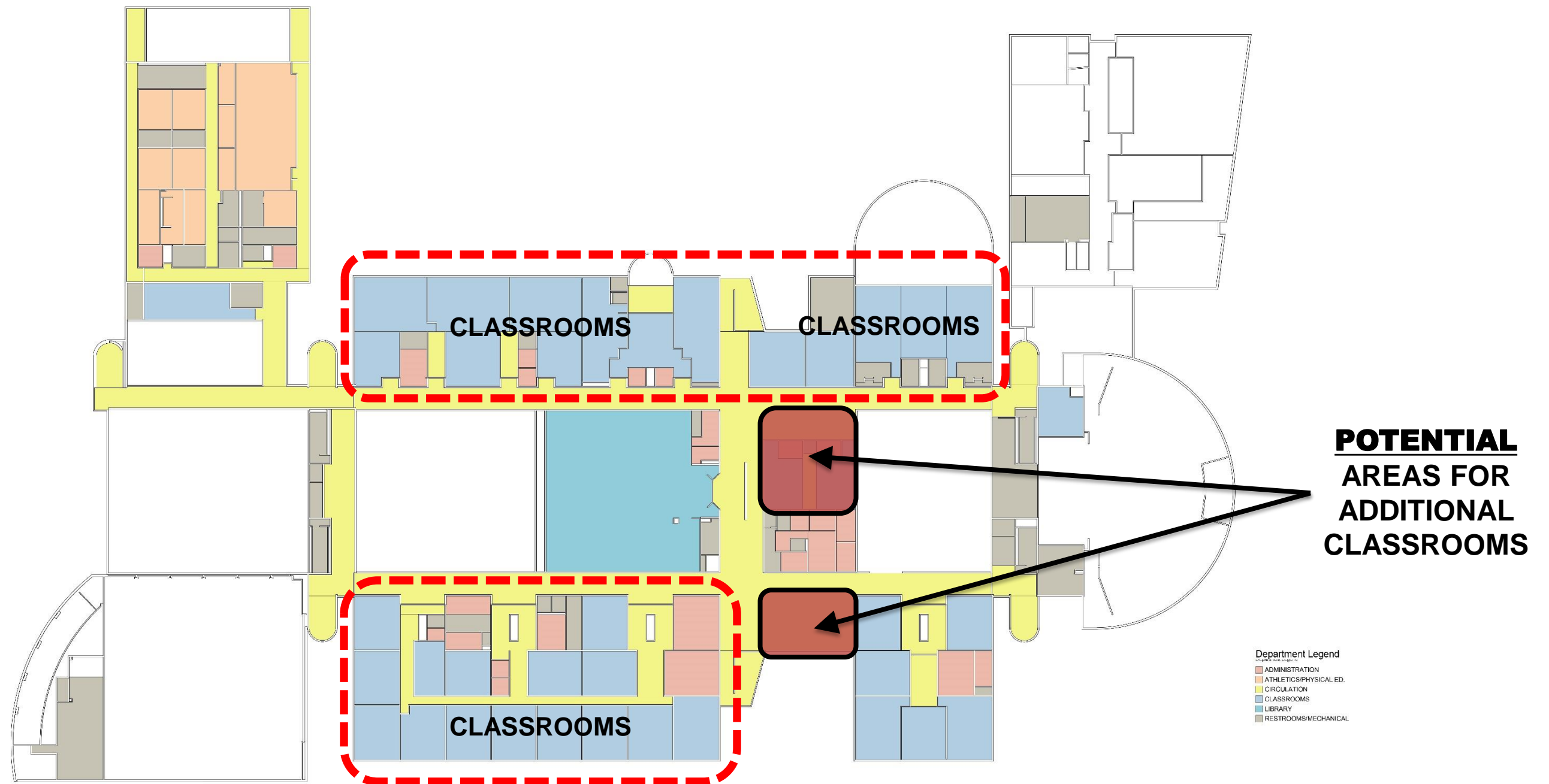




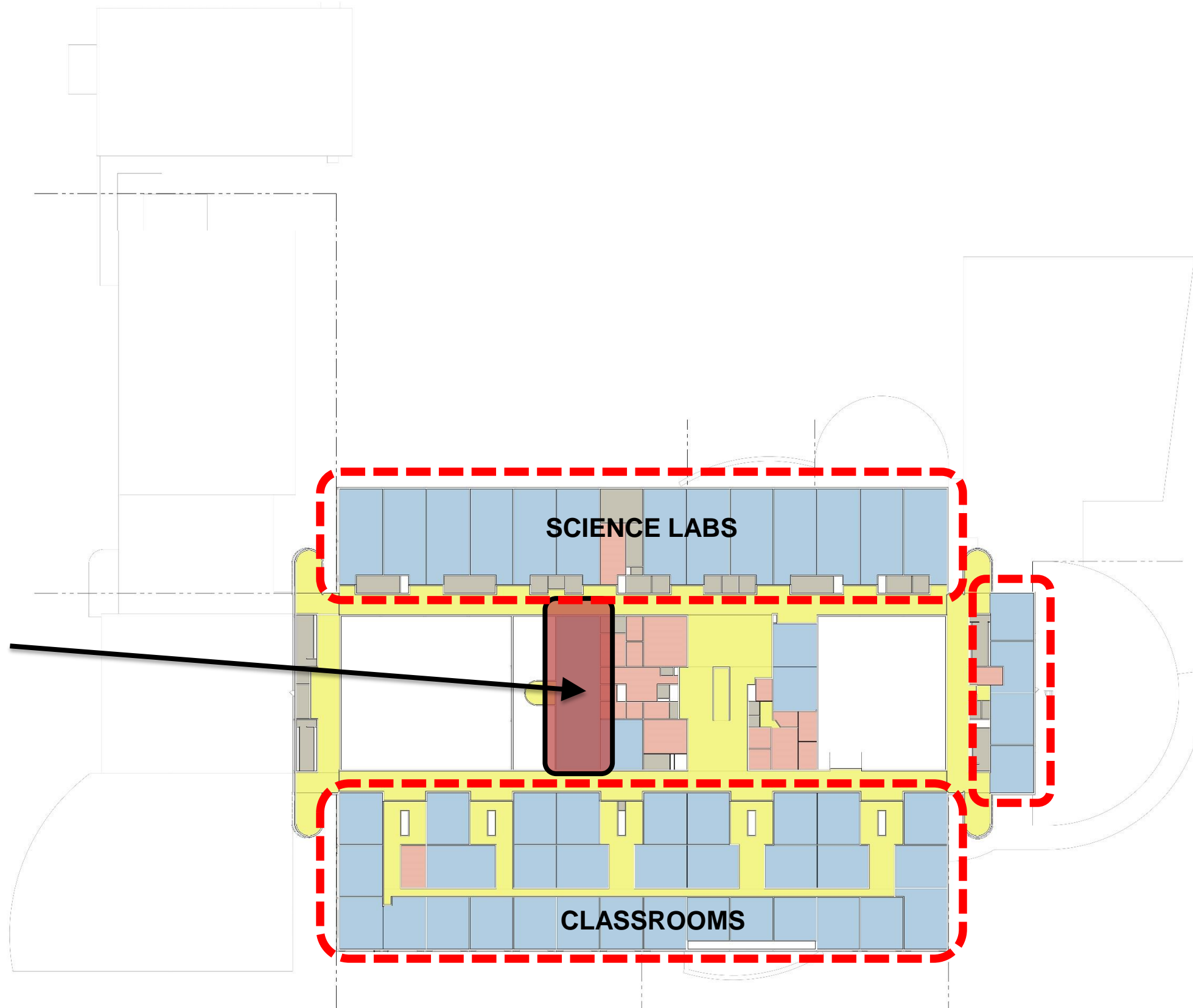
POTENTIAL
AREA FOR
COUNSELOR
SUITE

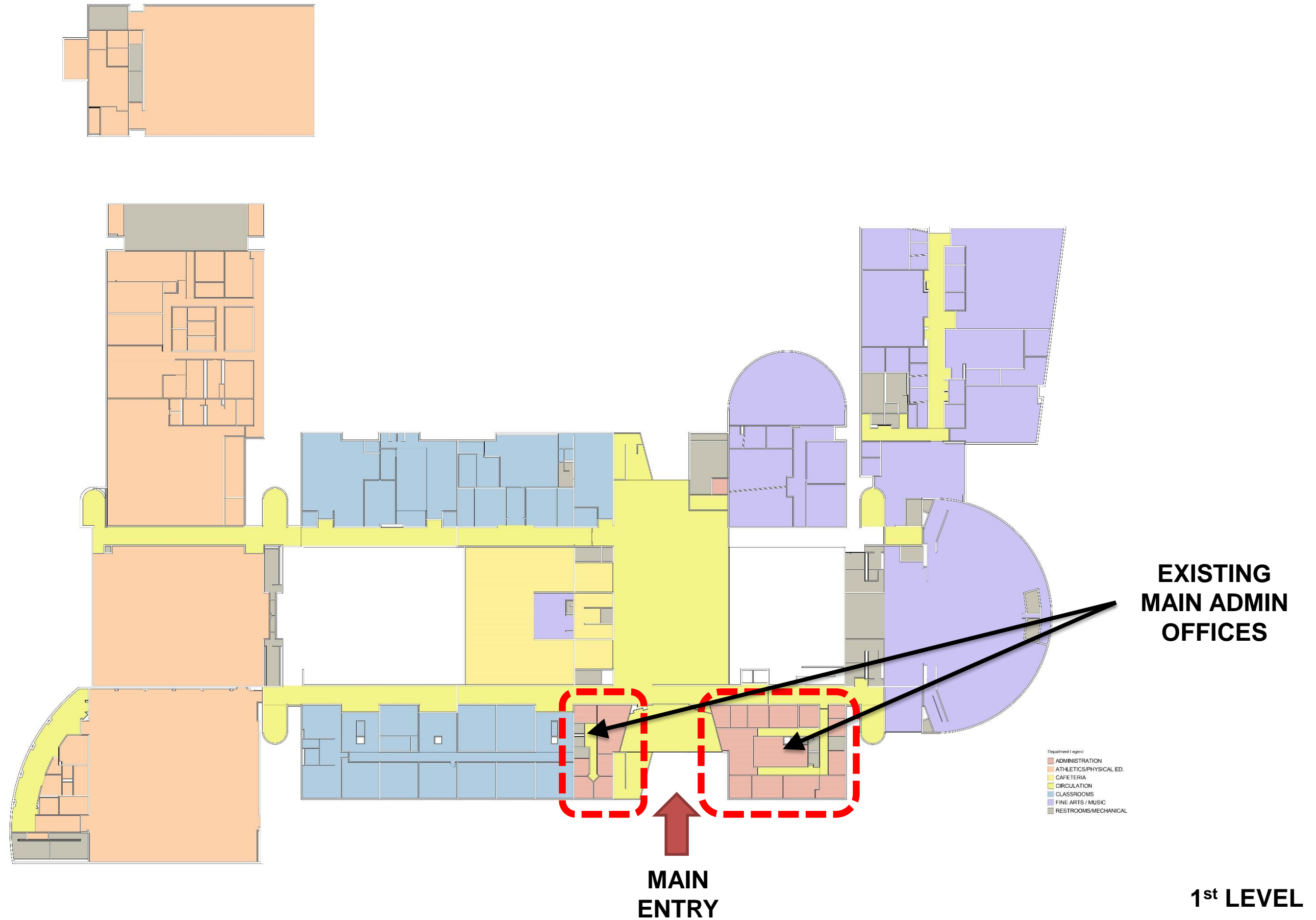
Department Legend
ADMINISTRATION
ATHLETICS/PHYSICAL ED.
CIRCULATION
CLASSROOMS
LIBRARY
RESTROOMS/MECHANICAL

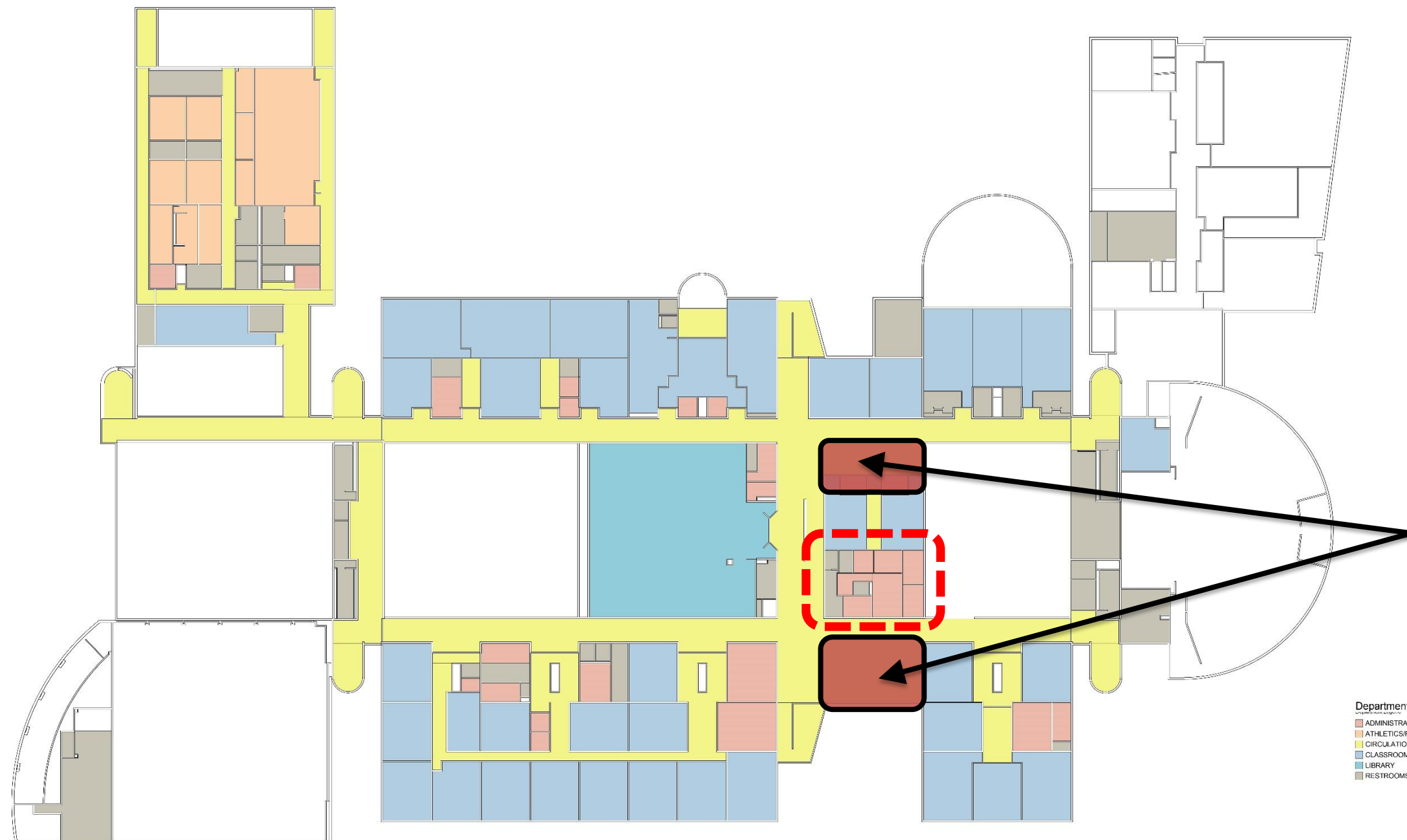




**POTENTIAL
AREAS FOR
ADDITIONAL
CLASSROOMS**



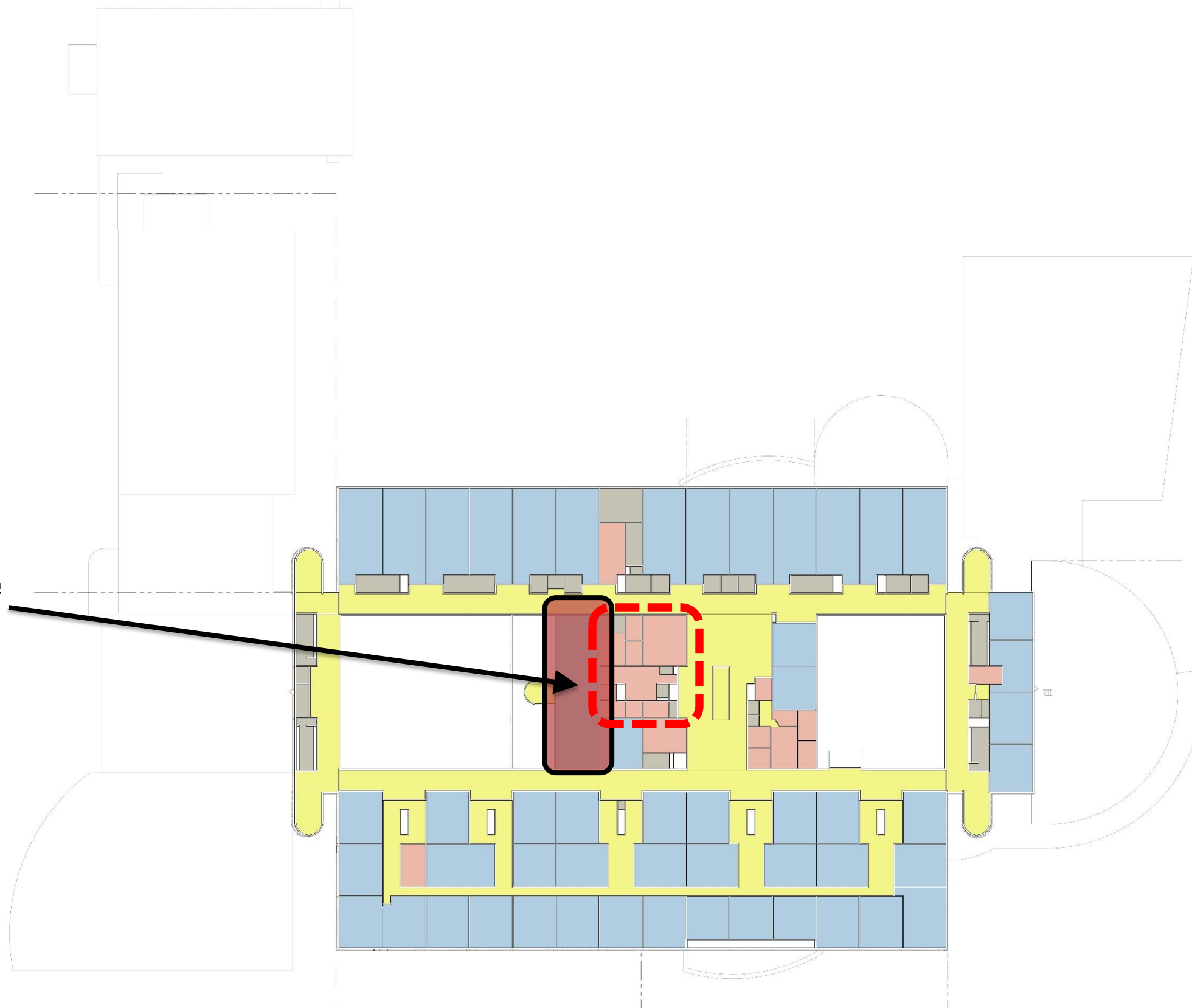


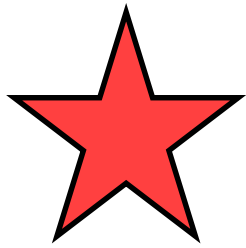


POTENTIAL
AREAS FOR
ADDITIONAL
OFFICES

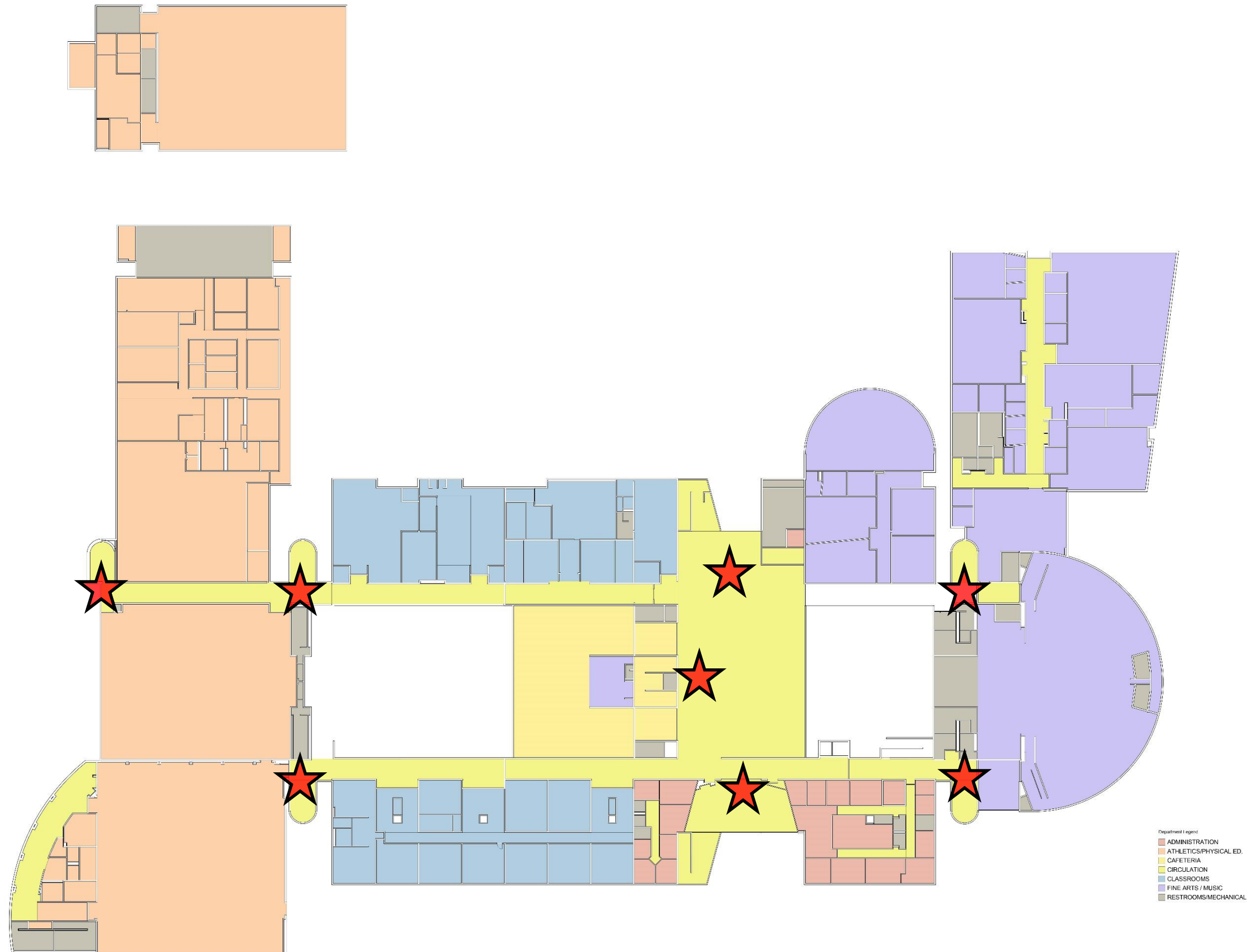
Department Legend
ADMINISTRATION
ATHLETICS/PHYSICAL ED.
CIRCULATION
CLASSROOMS
LIBRARY
RESTROOMS/MECHANICAL

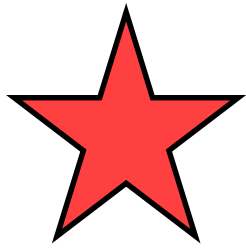
**POTENTIAL
AREAS FOR
ADDITIONAL
OFFICES**





**WAY-FINDING
“HOT SPOTS”**



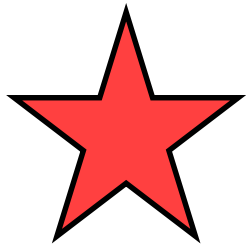


**WAY-FINDING
“HOT SPOTS”**

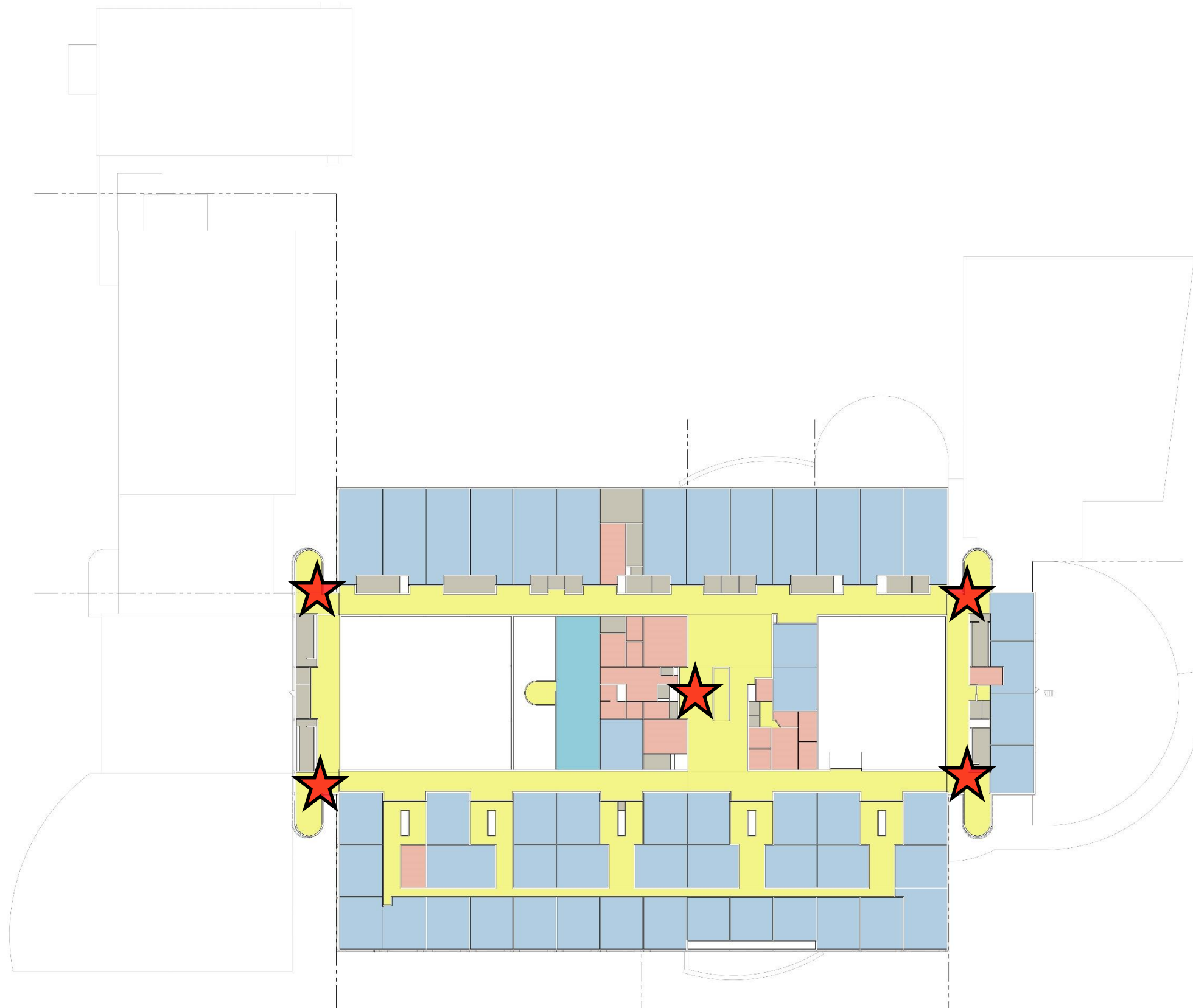


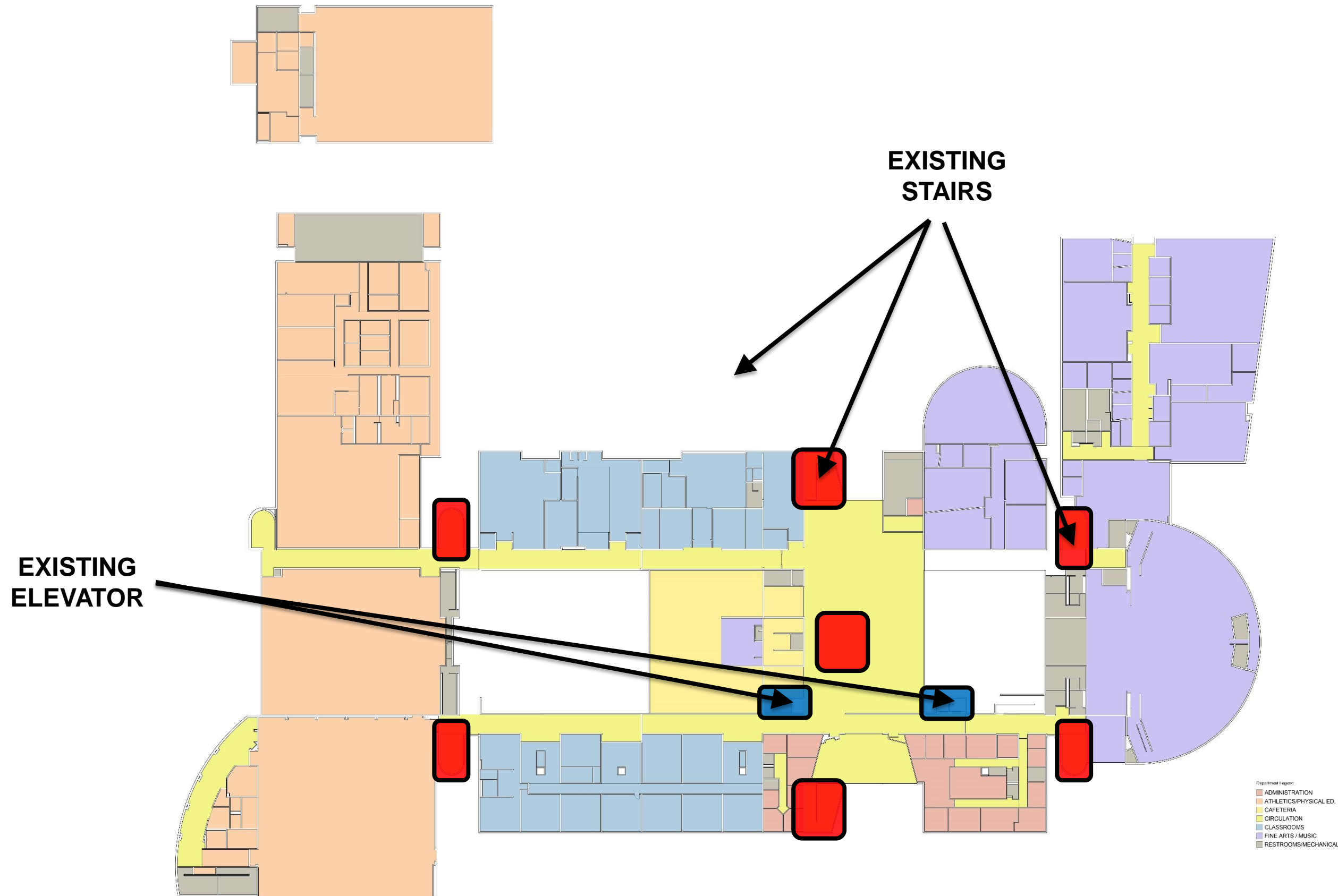
Department Legend

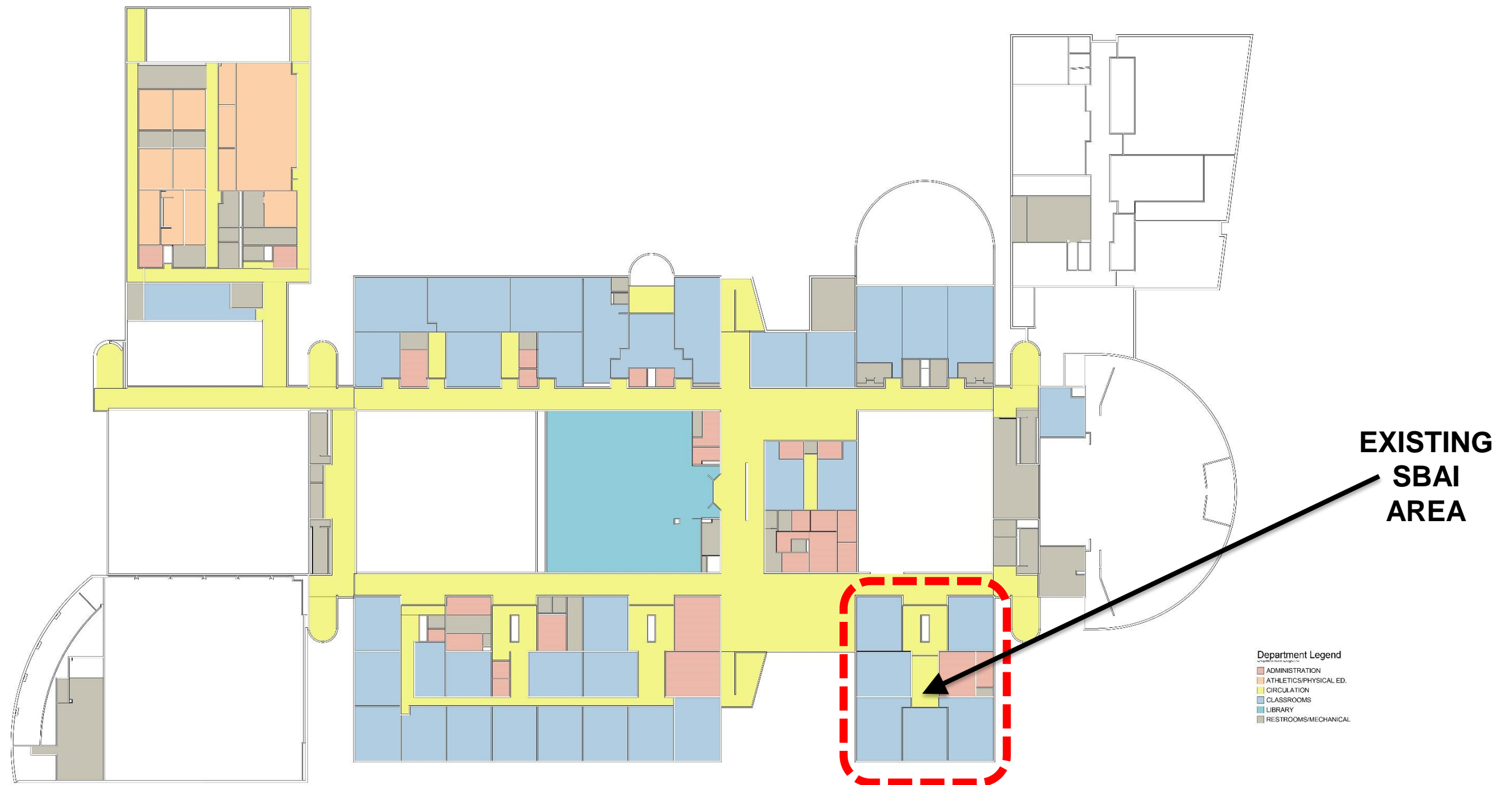
- ADMINISTRATION
- ATHLETICS/PHYSICAL ED.
- CIRCULATION
- CLASSROOMS
- LIBRARY
- RESTROOMS/MECHANICAL



**WAY-FINDING
“HOT SPOTS”**







PAT 02 Review

- Log in to: **slido.com**
- Enter Code: **E416**
- When done with question 01, please remain in slido.com, we will automatically change to question 02

- 1. Do you agree with the established Guiding Principles?**
- 2. Do you agree with the established Priorities?**
- 3. Are we going in the right direction for the Stratford High School Additions and Renovations Design after PAT 02?**

Next Steps



PAT 01

02-28-2019

KICK-OFF

- Fact Finding Review
- Gather Data
- Establish Guiding Principles



PAT 02

03-18-2019

PROG

- Floor Plan improvements
- Auditorium plan review
- Site Improvements

PAT 03

04-03-2019

SD

- Refine Layout Options
- Acoustical consultant

PAT 04

04-25-2019

SD

- Refine Layout Options
- Volumetric exterior concepts

PAT 05

05-16-2019

DD

- Refine Exterior Design
- Start Interior Design

S U M M E R
B R E A K

PAT 06

08-21-2019

DD

- Review Overall Design
- Present Exterior and Interior imagery
- Review finishes

PAT 07

09-04-2019

CD 25%

- Review Overall Design
- Review Finishes



Thank You!

