



Spring Branch ISD  
Landrum Middle School

Project Advisory  
Team Meeting #4

March 19, 2019

# EVERY CHILD



# Agenda: PAT Meeting #4



5 mins:

**1. Welcome & Introductions + Overview**

PAT Charge  
PAT Process + Objectives/Goals

10 mins:

**2. PAT Meeting #3: Recap**

Meeting Highlights and PAT Feedback

60 mins:

**3. LMS Design Update + Discussion**

Site Plan .....PAT Engagement  
Floor Plans.....PAT Engagement

5 mins:

**4. Closing Remarks**

Wrap-up / Next Steps  
User Group Meetings Update

# 1. Welcome + Meeting Overview

## LMS Project Advisory Team (PAT) - Charge

### OVERVIEW

A Project Advisory Team (PAT) will be chartered for the planning of a replacement for **Landrum Middle School** under the school's project in the 2017 Bond Program.

### CHARGE

The PAT will work collaboratively and cooperatively with the architect and SBISD Project Manager **to conceptualize, develop and refine the project's goals and design.**

**The PAT will advise on recommendations regarding the planning and development of the replacement of Landrum Middle School.**

**These recommendations will be presented by the project's architects:**

- 1) to the **Superintendent of Schools**, and based on approval from the Superintendent,
- 2) to the **Board of Trustees** for their approval.

**The Board of Trustees may act upon the recommendations developed with PAT input by approving, amending, altering or not approving all or any part of the recommendations.**



## Project Scope

- Replacement of Landrum Middle School with new 3-story building
- On Site Transition
- Estimated 234,000 SF based on SBISD Middle School Educational Specifications
- Estimated 2-year construction sequence



# Proposed Project Schedule

➤ **Schematic Design Phase** January - March 2019

- PAT Meeting #1: January 15, 2019
- PAT Meeting #2: January 28, 2019
- PAT Meeting #3: February 19, 2019

➤ **Design Development Phase** March - May 2019



- PAT Meeting #4: March 19, 2019
- PAT Meeting #5: April 23, 2019

➤ **Construction Documents** May – August 2019

➤ **Procurement & Permitting** Sept- Nov 2019

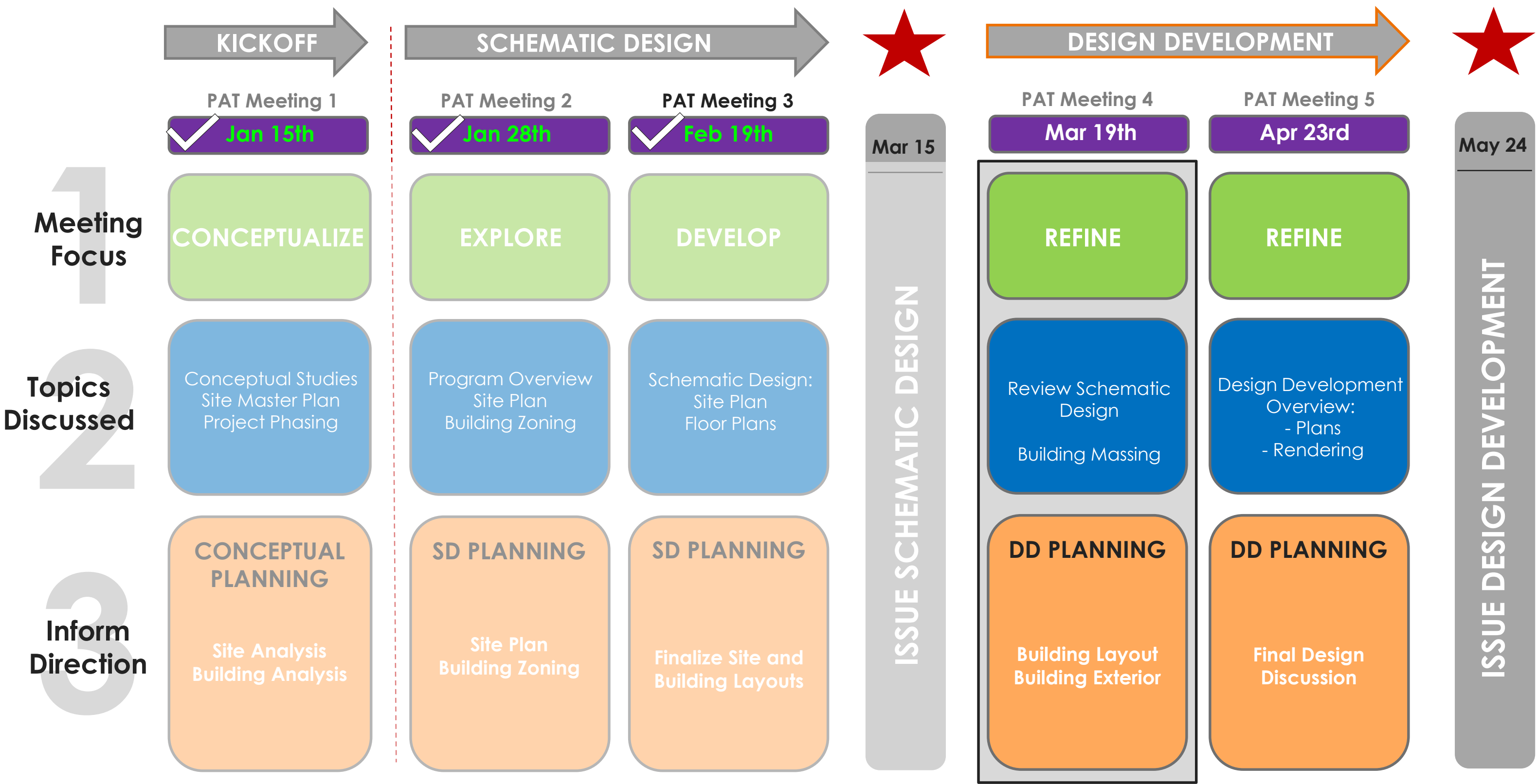
- Board GMP Approval: November 2019

➤ **Construction Administration** Dec 2019-Fall 2021

- Phase I Construction: Dec 2019 - May 2021
- New Building Move In: June 2021
- Phase II Construction: June – Fall 2021

# Meeting Schedule

## Landrum MS | PAT Engagement Process



# Agenda: PAT Meeting #4

5 mins: 1. **Welcome & Introductions + Overview**  
PAT Charge  
PAT Process + Objectives/Goals

10 mins: 2. **PAT Meeting #3: Recap**  
Meeting Highlights and PAT Feedback

60 mins: 3. **LMS Design Update + Discussion**  
Site Plan .....PAT Engagement  
Floor Plans.....PAT Engagement

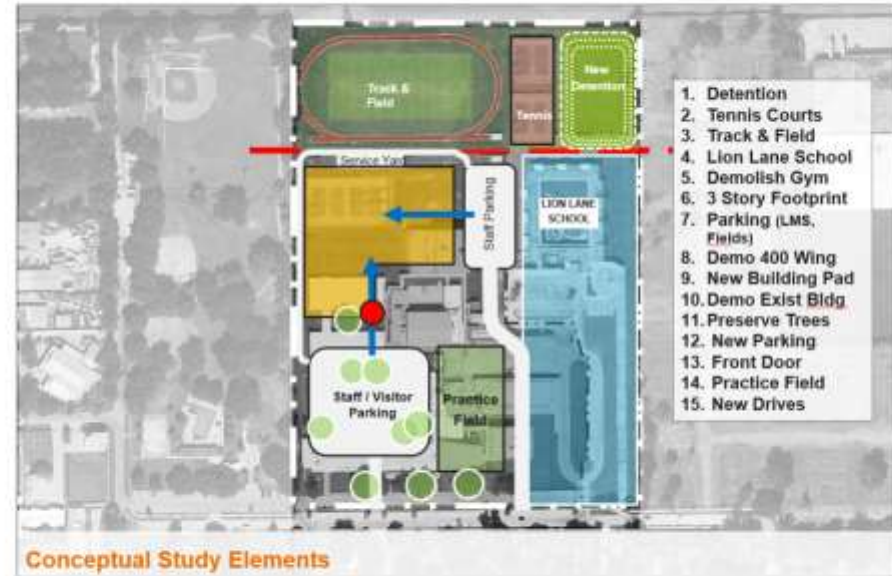
5 mins: 4. **Closing Remarks**  
Wrap-up / Next Steps  
User Group Meetings Update



# 2. PAT Meeting-3 Recap

## 1. Site Plan Discussion

### 4. Landrum MS Schematic Design



Conceptual Study Elements

Conceptual Site

### • Site Plan Review + PAT Engagement

- Building Placement
- General Site Layout Strategy
- Traffic Flow
- Sense of Arrival
- Outdoor Connections

### • Large Group Discussion

- Provide clear delineation of Visitor and Staff Parking
- Study Staff Parking at Bus Loop (Limited Quantity)
- Connection of the fields – Distance? Security?
- Good connections to outdoors
- Logical flow to site activities and building approach



LMS Bus Drop-Off

Lion Lane School Bus Drop-off

S.E. Bus Drop-Off

LMS Parent Drop Off

Lion Lane School Parent Drop-Off

▶ Staff and Visitor Parking

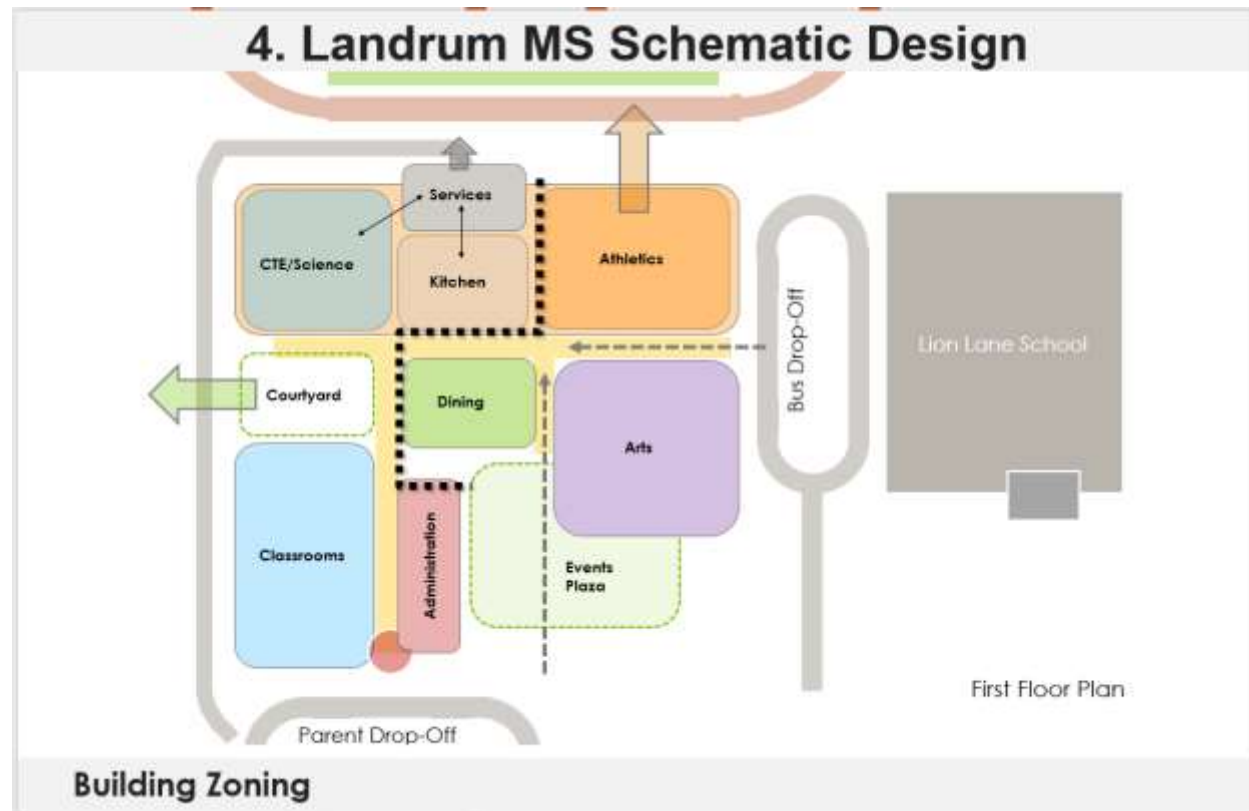
Access to Field Events

Service Access

Monument Sign



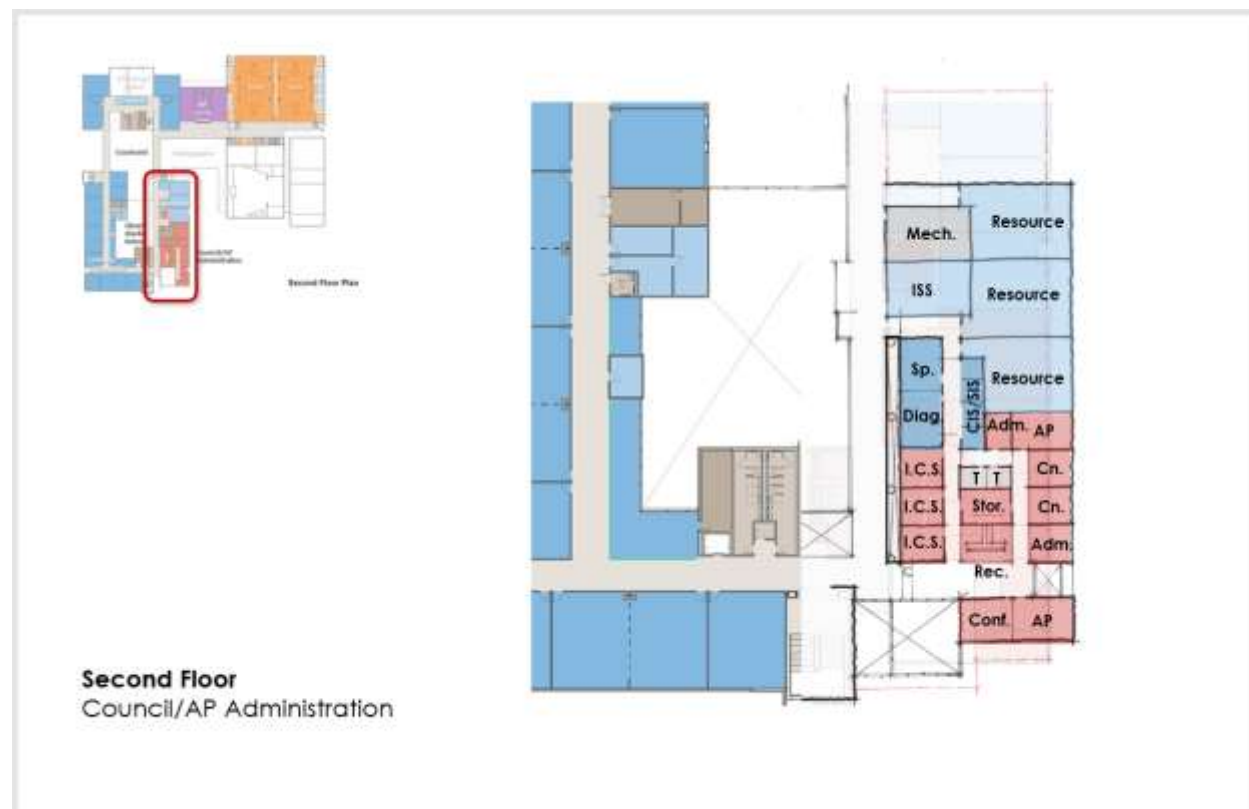
# 2. PAT Meeting-3 Recap



## 2. Floor Plan Discussion

- **Floor Plan Review + PAT Engagement**

- Building Zoning
- Vertical Zoning
- Proposed Spatial Organization and Adjacencies
- Flexibility of Spaces



- **Large Group Discussion**

- Overall reaction was Positive – Logical organization
- Ensure CTE Program Flexibility
- Acoustic Separations / Noise from gym
- Connections to 2<sup>nd</sup> Floor Gym
- Vertical Accessibility/Elevator Locations
- Physical Separation of Zones
- Locations of Courtyard / Connection to Park / Security

# 2. PAT Meeting-3 Recap

## 3. Teaching and Learning



- **Anticipated Learning Use of Facility**

- Varieties of Teaching Methods
- Personalized Learning
- Flexibility for Group and Individual Work

- **Breakout Group Discussion**

- Furniture Flexibility – Large or Small group settings
- Furniture Mobility – Easy to Move
- Interactive Features - Furniture, Technology kiosks
- Active Learning – Student movement during class time
- Acoustic Separation - Between different space types

# Agenda: PAT Meeting #4

---

**5 mins:**     **1. Welcome & Introductions + Overview**  
PAT Charge  
PAT Process + Objectives/Goals

---

**10 mins:**   **2. PAT Meeting #3: Recap**  
Meeting Highlights and PAT Feedback

**60 mins:**   **3. LMS Design Update + Discussion**  
Site Plan .....PAT Engagement  
Floor Plans.....PAT Engagement

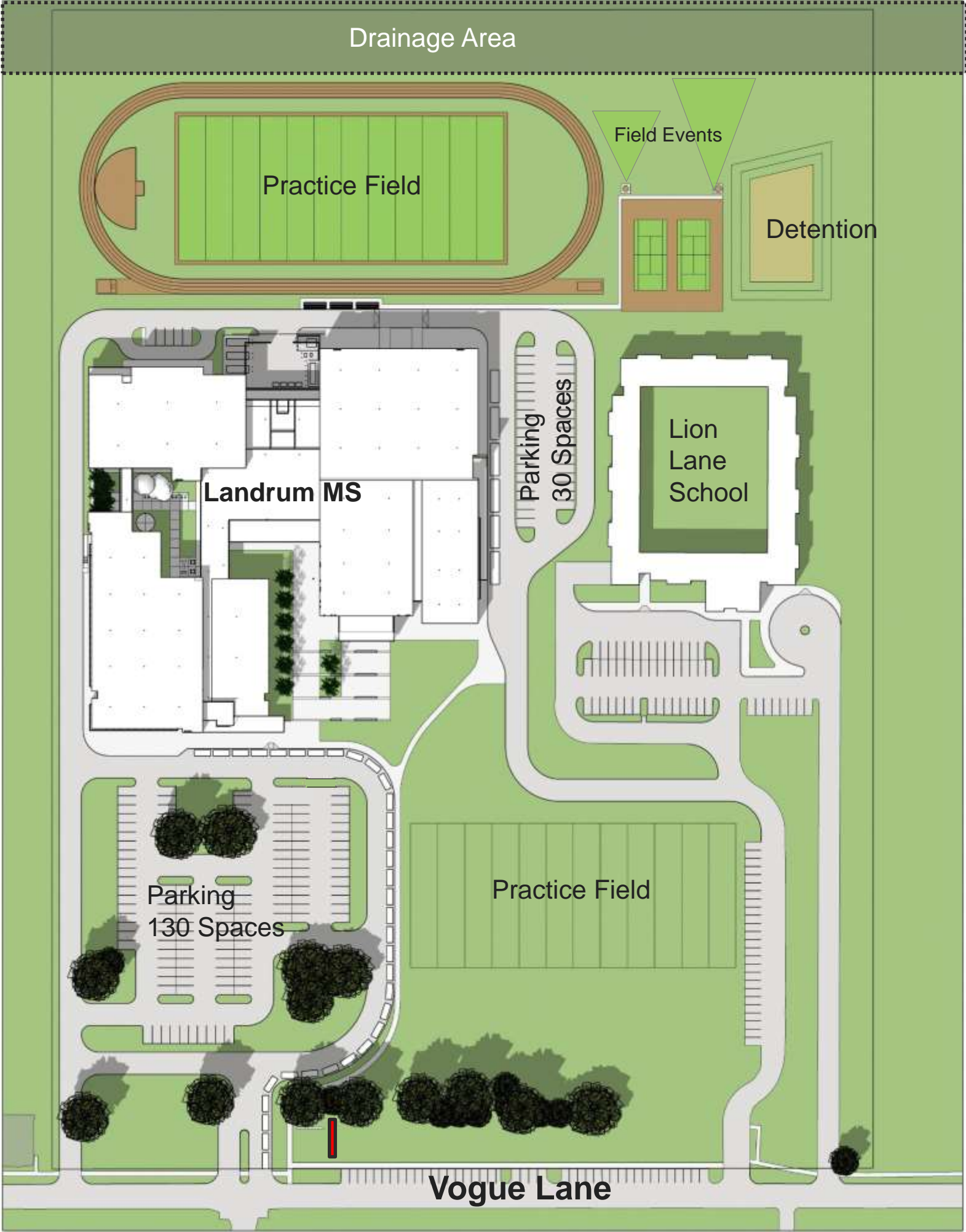
**5 mins:**     **4. Closing Remarks**  
  
Wrap-up / Next Steps  
User Group Meetings Update



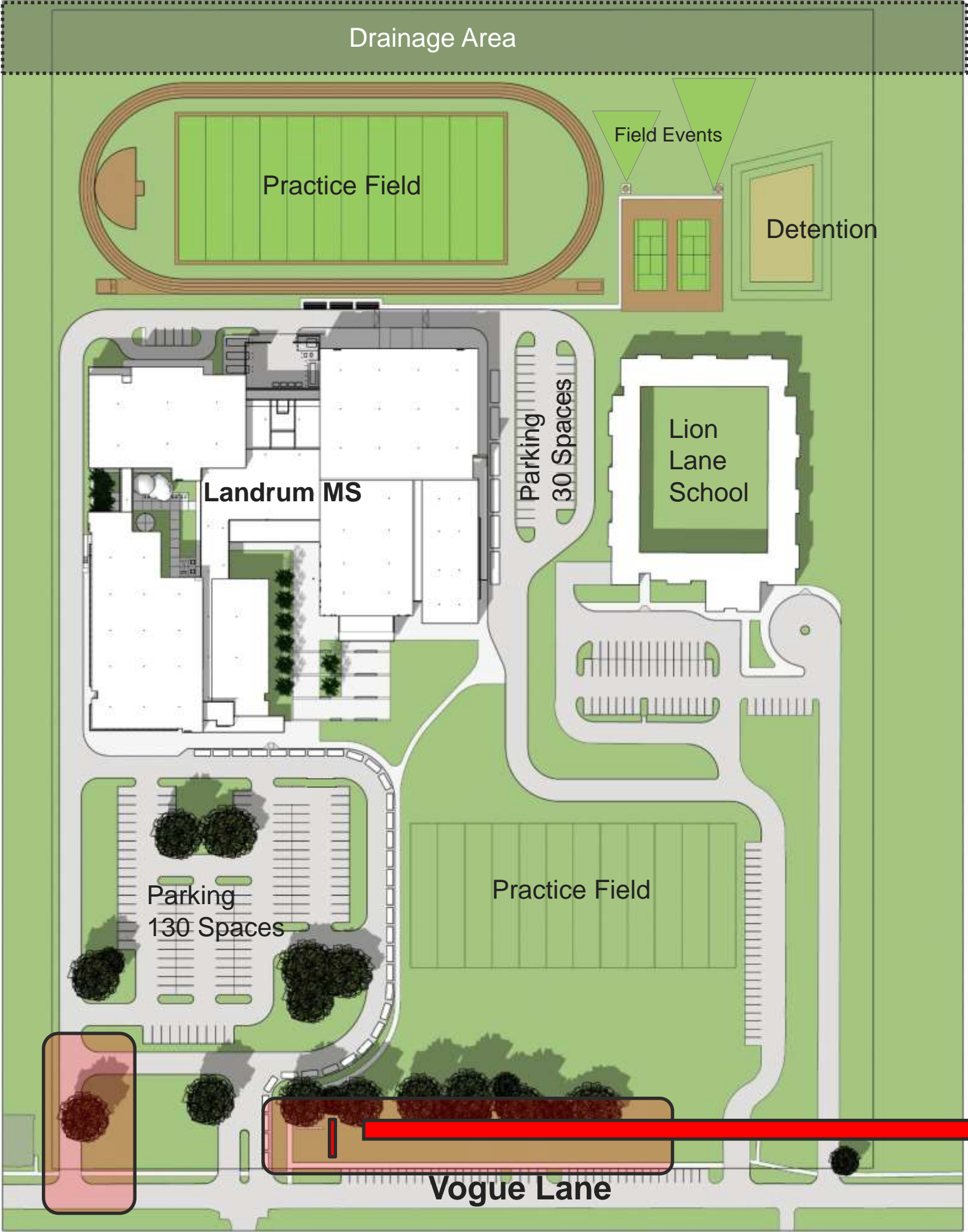


Site Plan

Floor Plans



**SITE PLAN**  
**Modified Drives**



**SITE PLAN**

**Modified Drives**

**Monument Sign**



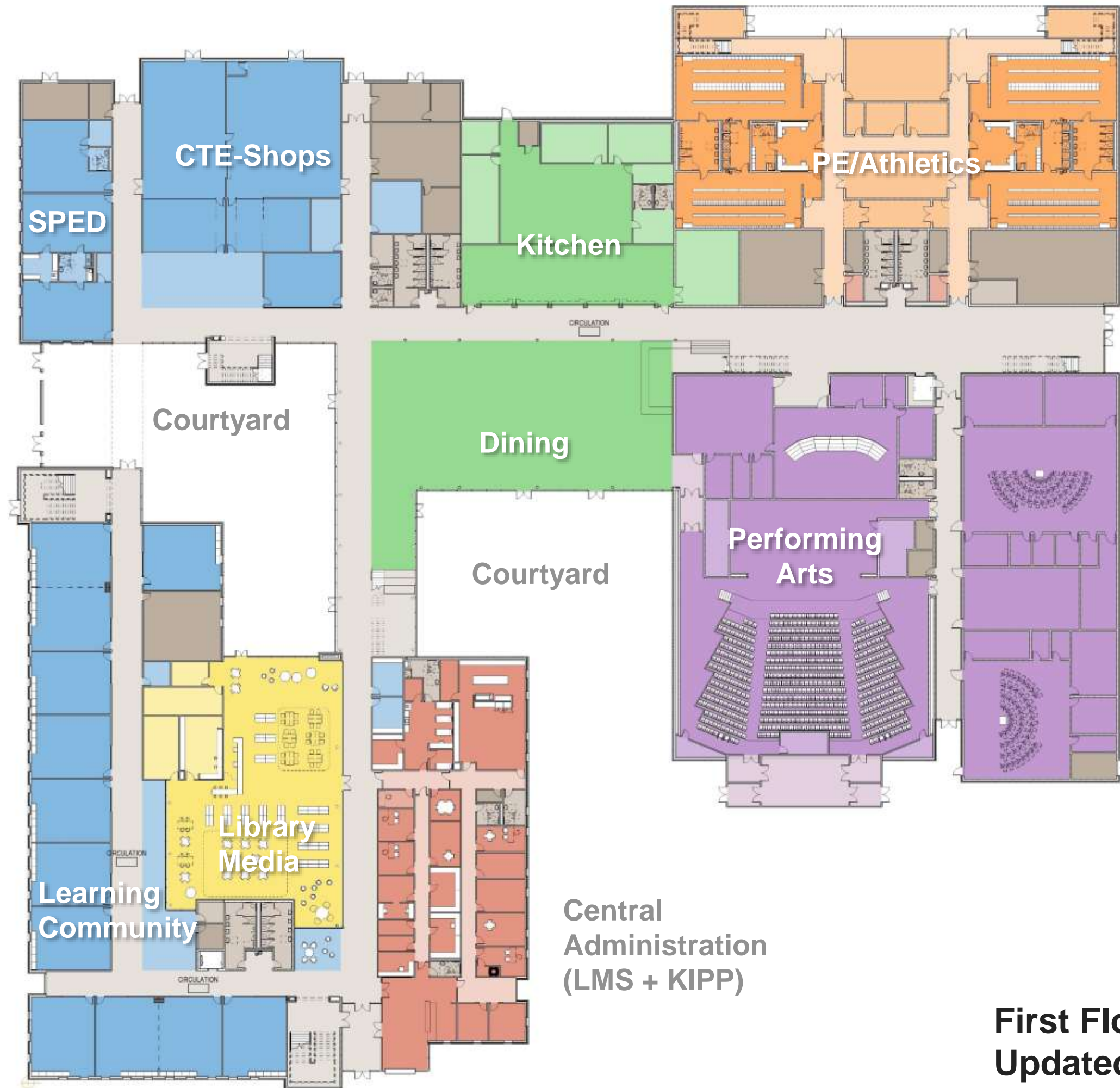




Site Plan

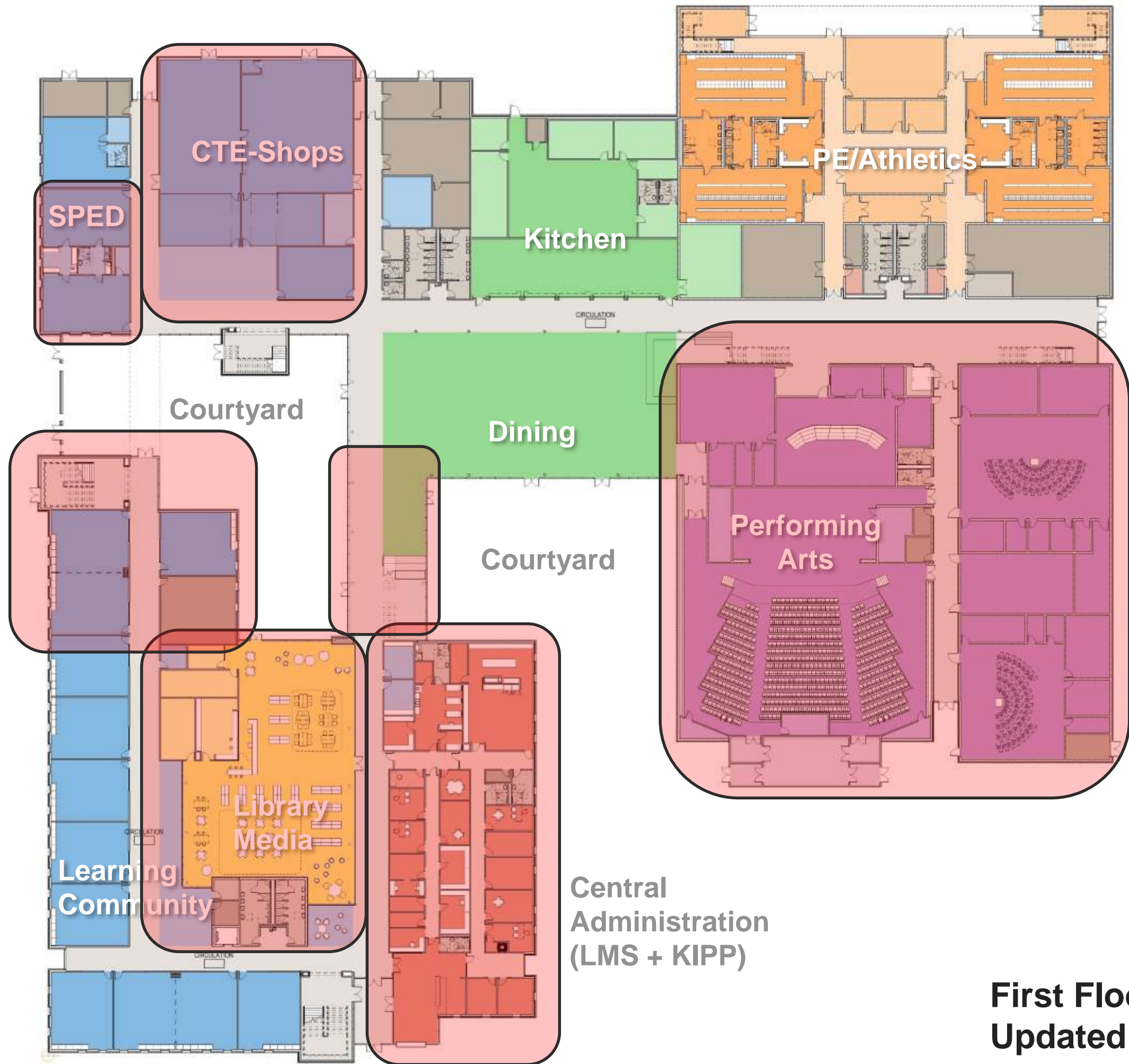


Floor Plans



**First Floor Plan  
Updated Areas**



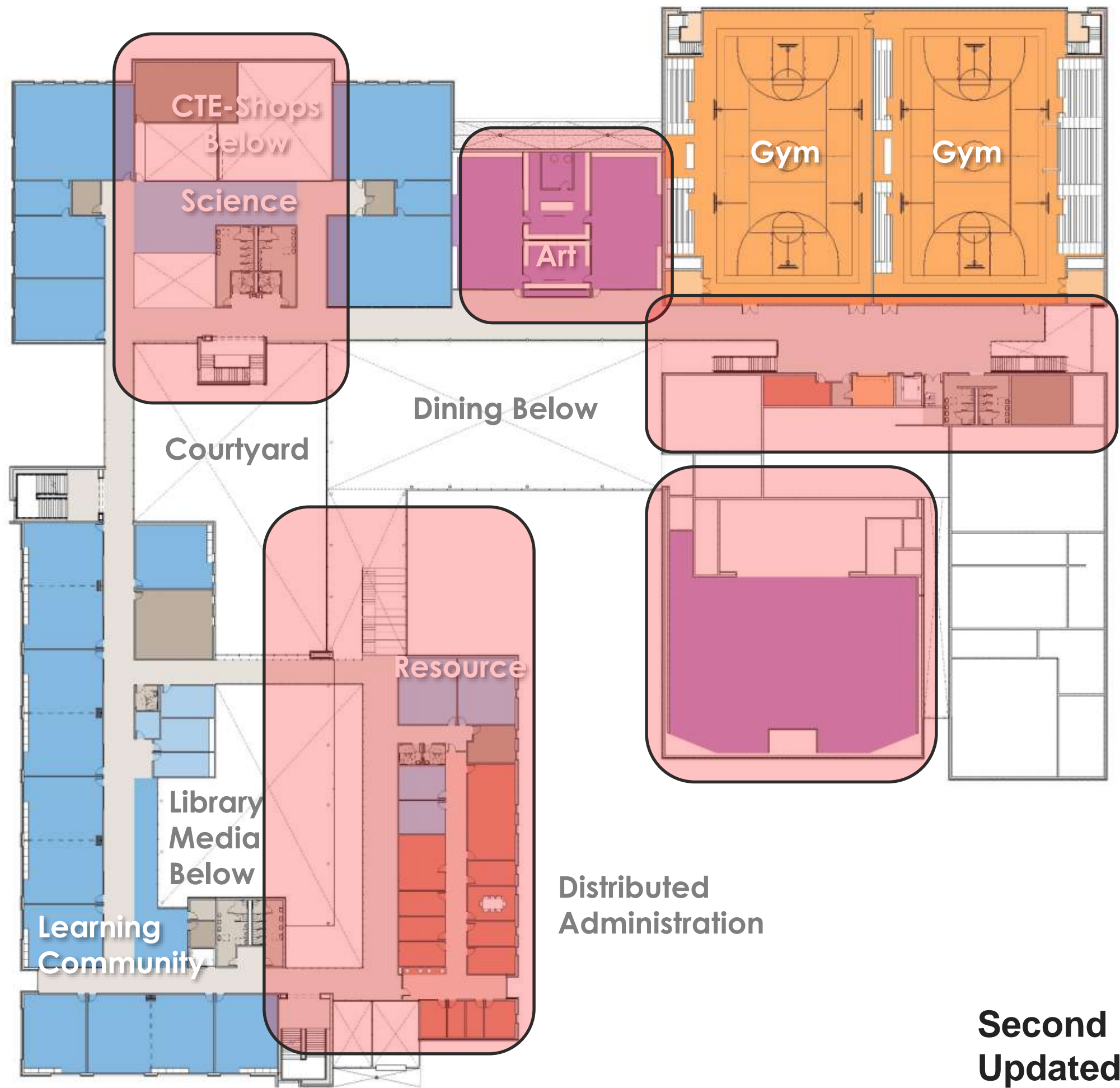


**First Floor Plan  
Updated Areas**





**Second Floor Plan  
Updated Areas**



**Second Floor Plan  
Updated Areas**

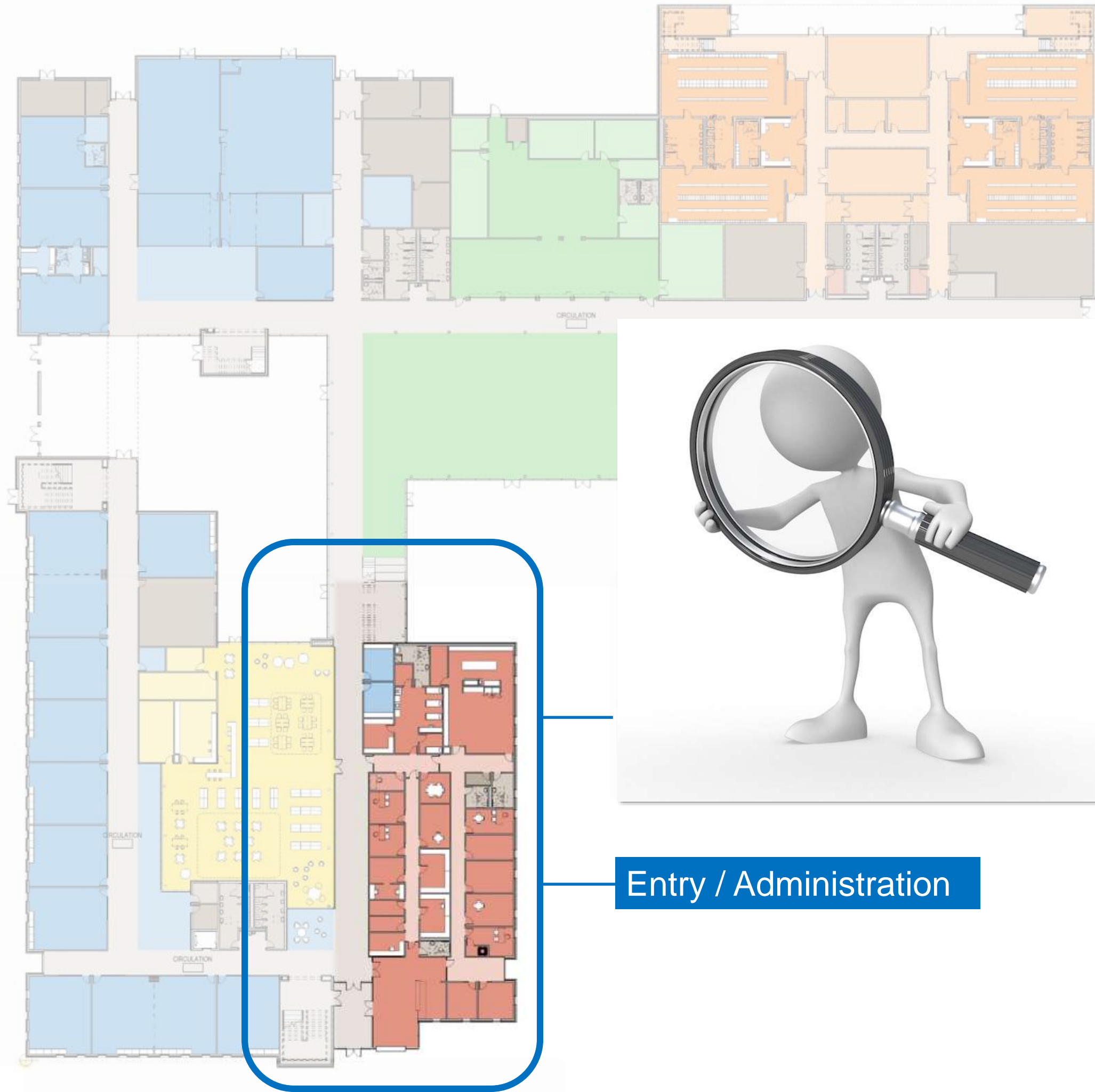


**Third Floor Plan  
Updated Areas**





**Third Floor Plan  
Updated Areas**



Entry / Administration



## Entry/Administration

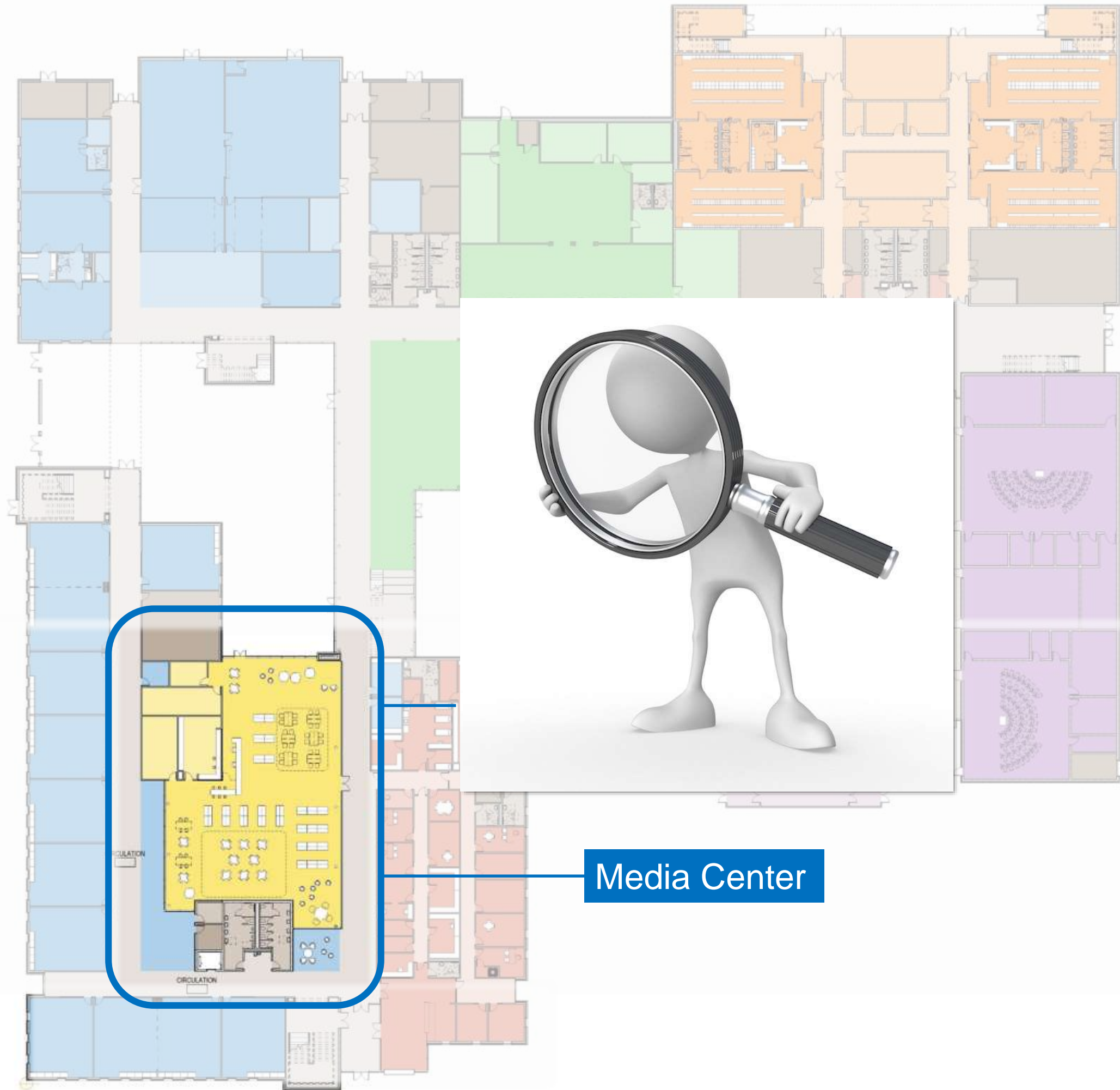
- Entry Flex Area
- LMS History
- Seating & Display
- Views to Library
- Views to Courtyard Beyond



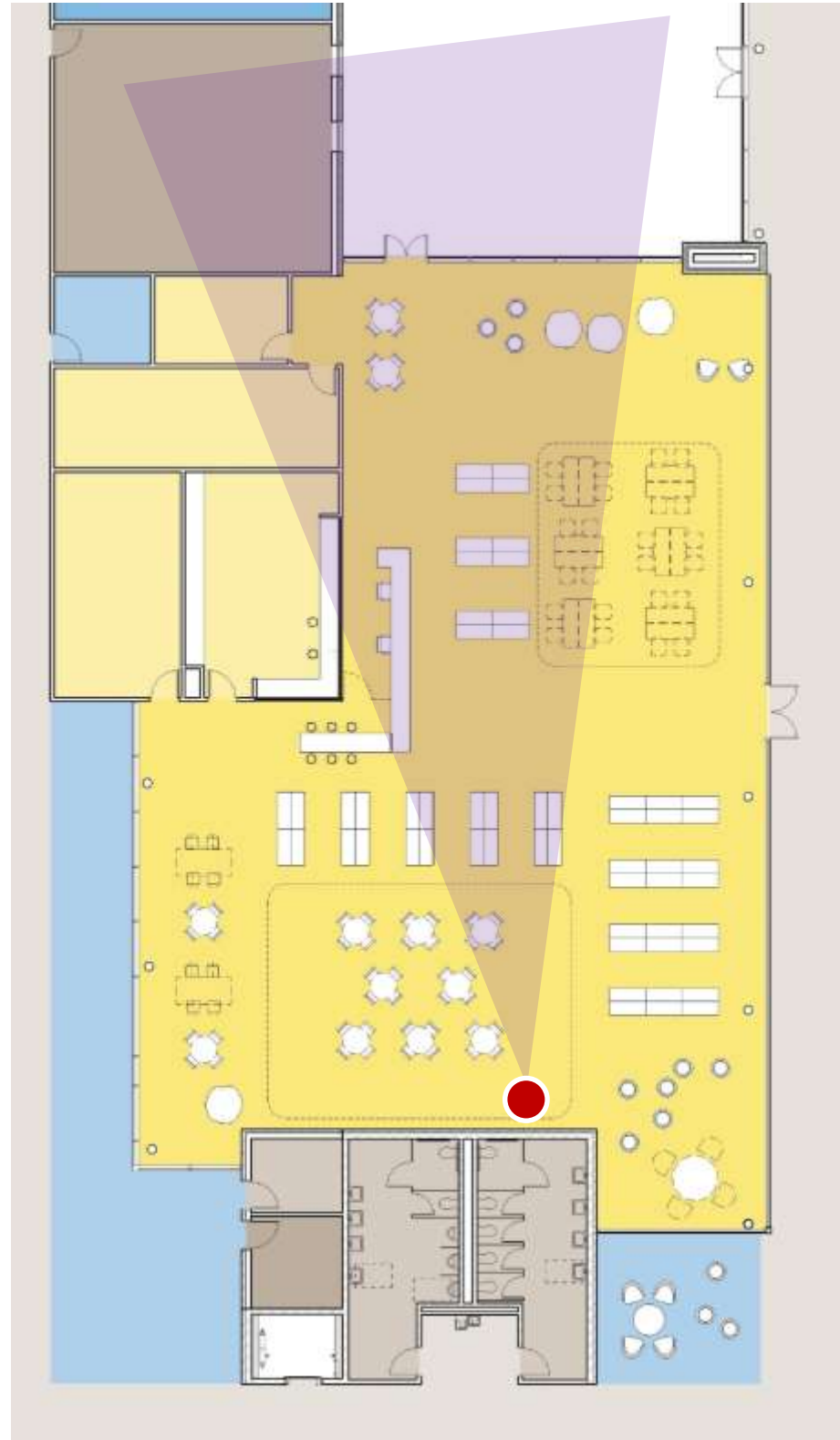


View at Main Entry





Media Center



## Media Center

### Interior Configuration

*Furniture*

*Stacks*

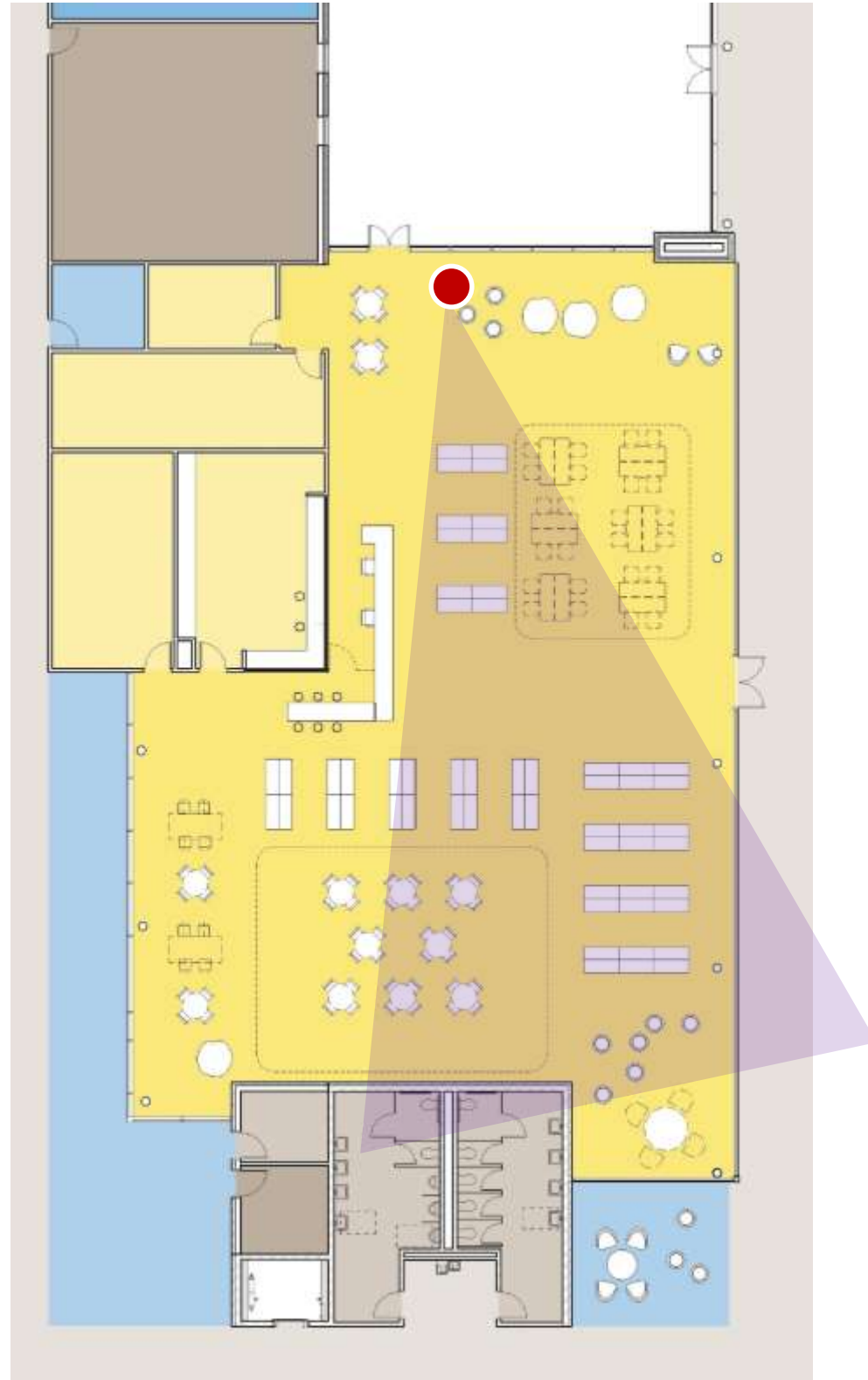
*Group Settings*





View at Media Center





## Media Center

### Interior Configuration

*Furniture*

*Stacks*

*Group Settings*

### Dynamic Graphics





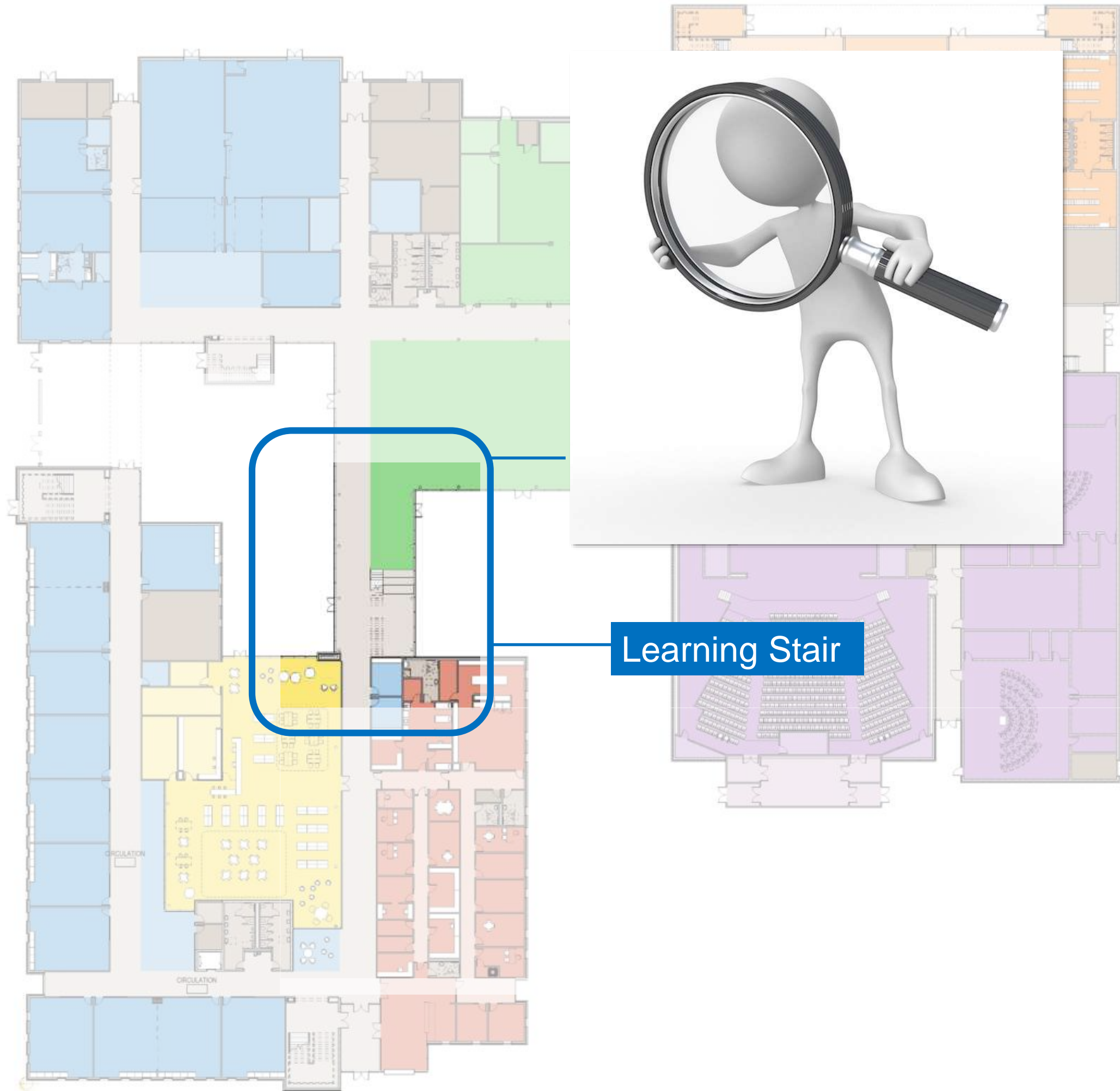
View at Media Center





View at Media Center







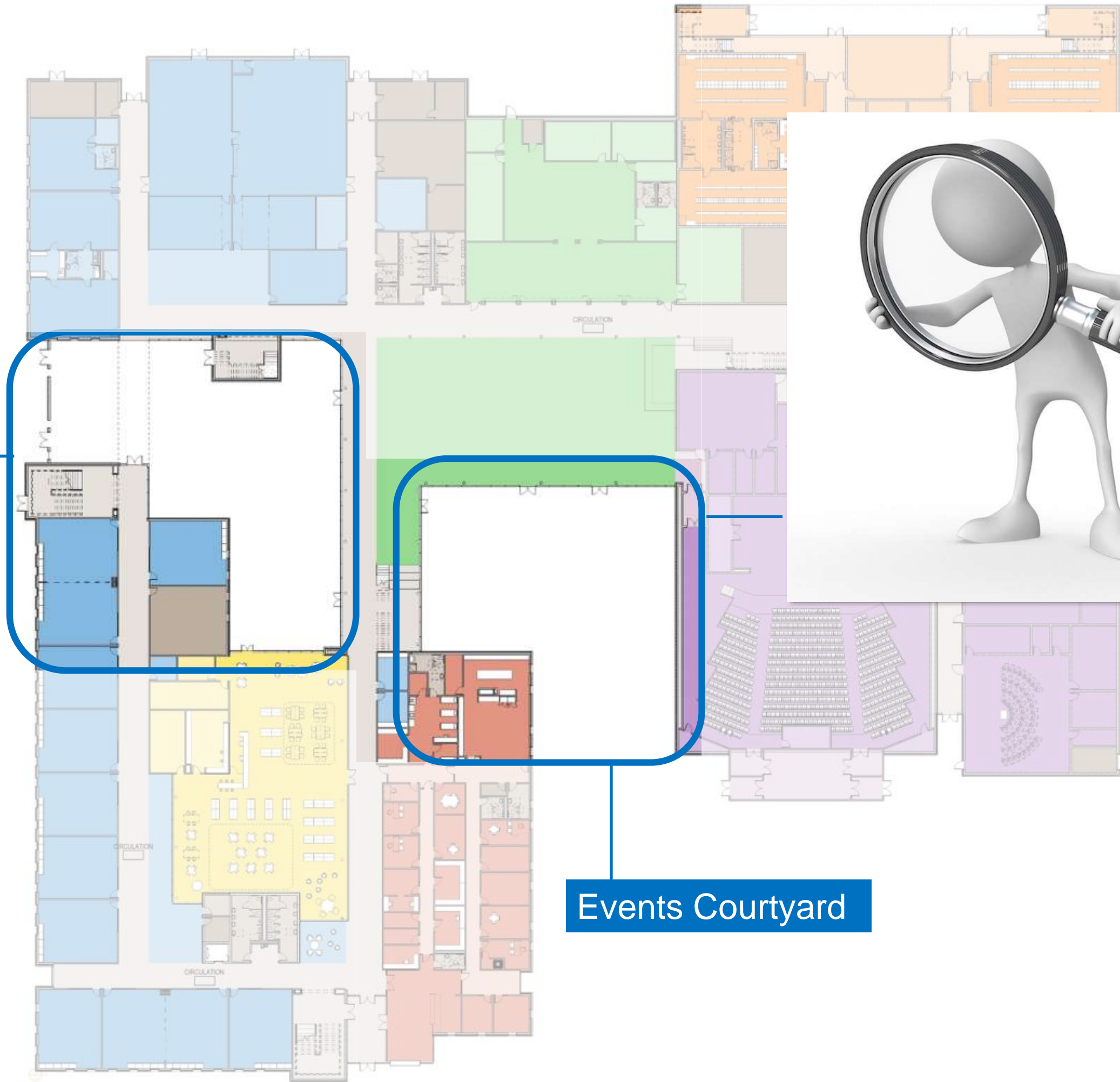
## LEARNING STAIR





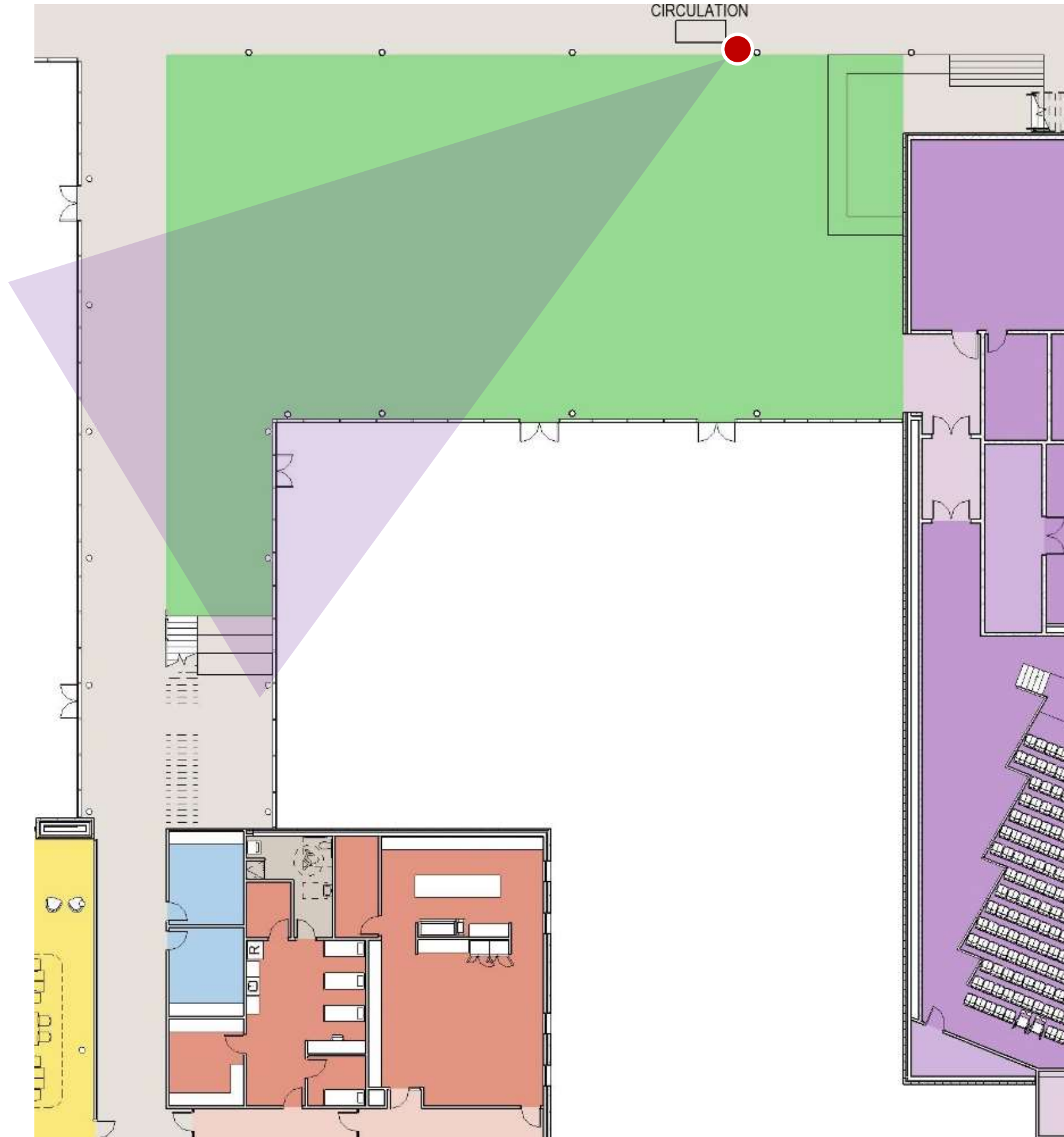


Events  
Courtyard



Events Courtyard





Courtyards





**View to Courtyards from Dining**

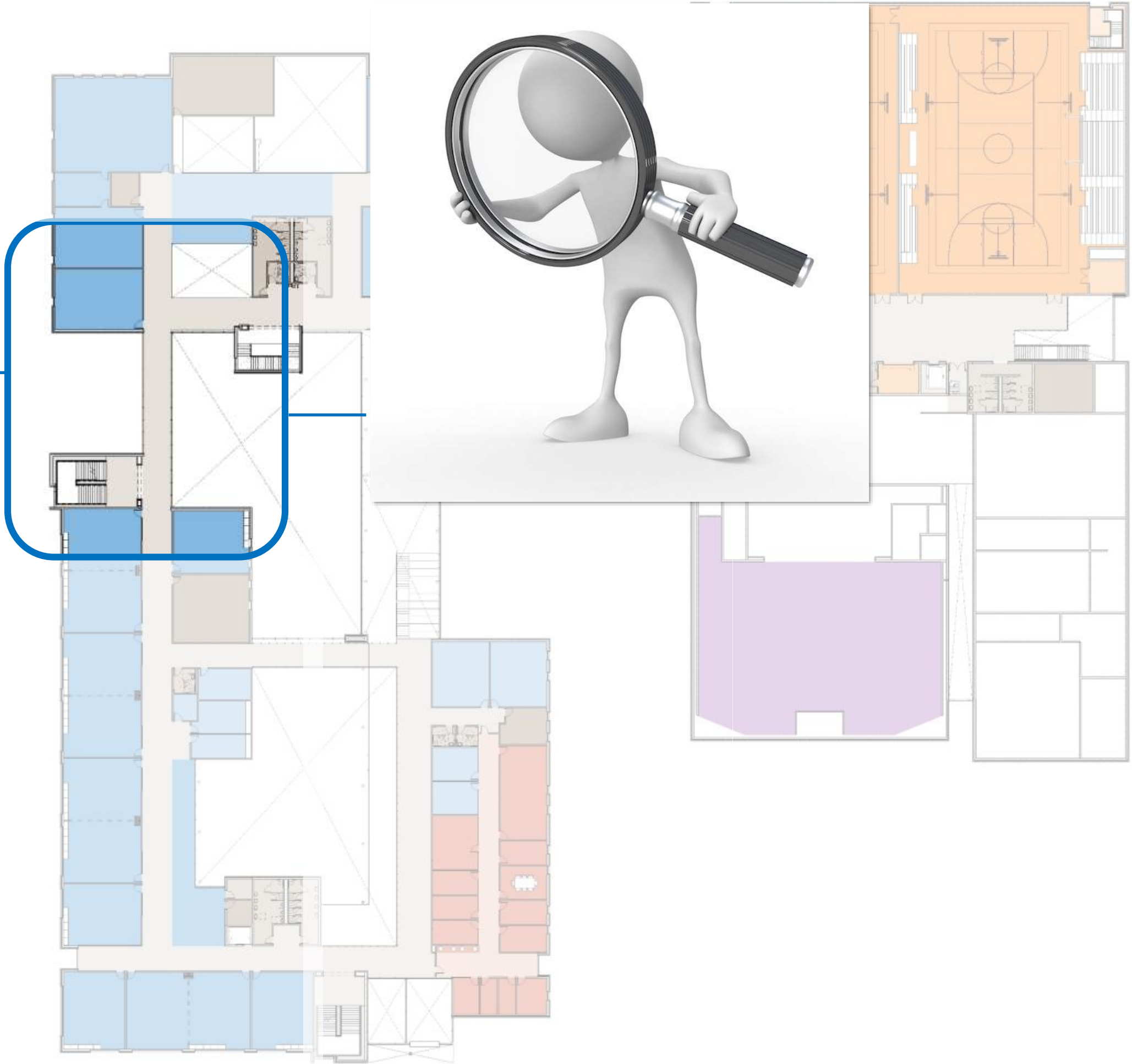




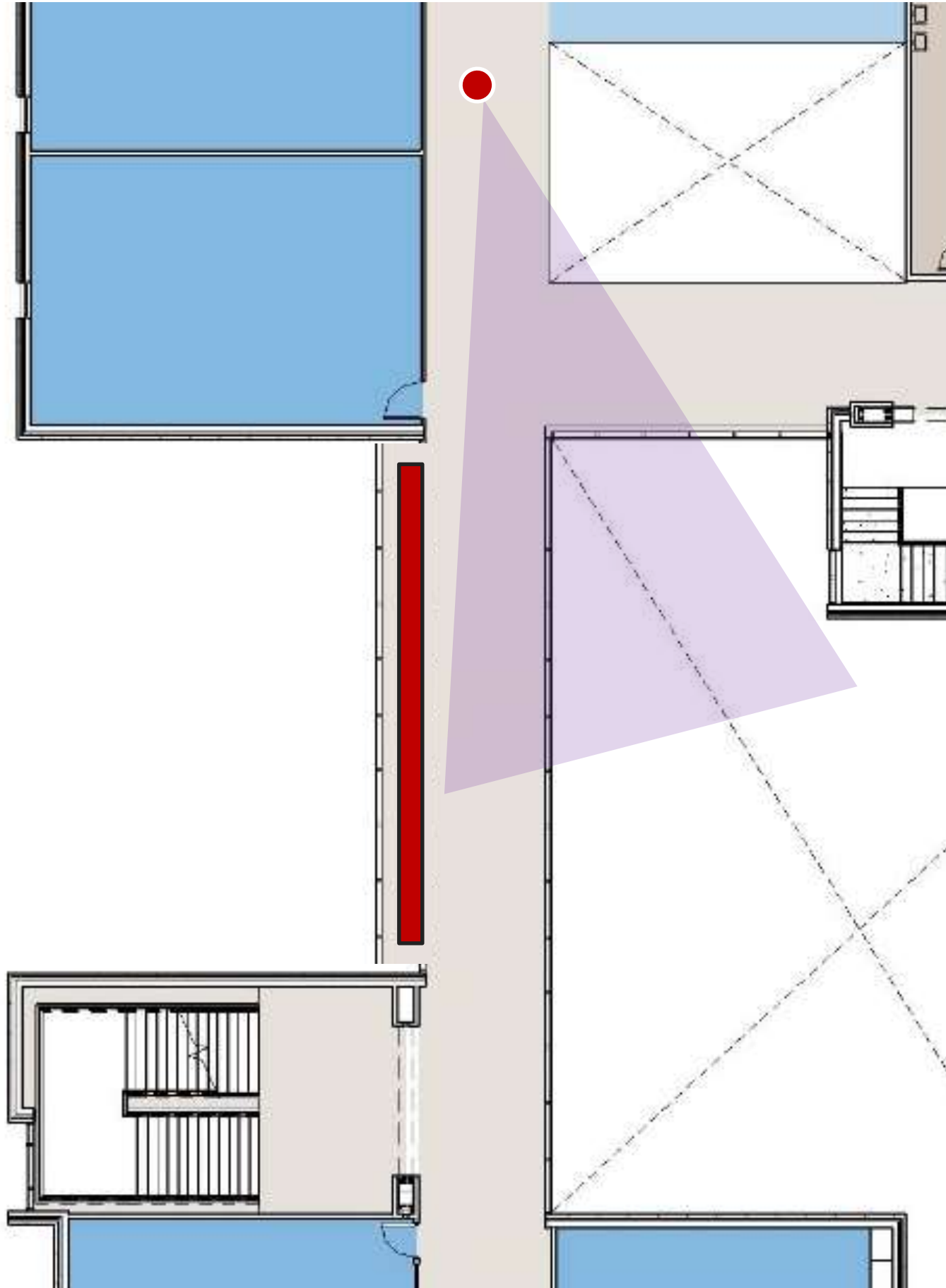
**View to Courtyards from Dining**



Flex-Bridge







Flex Bridge



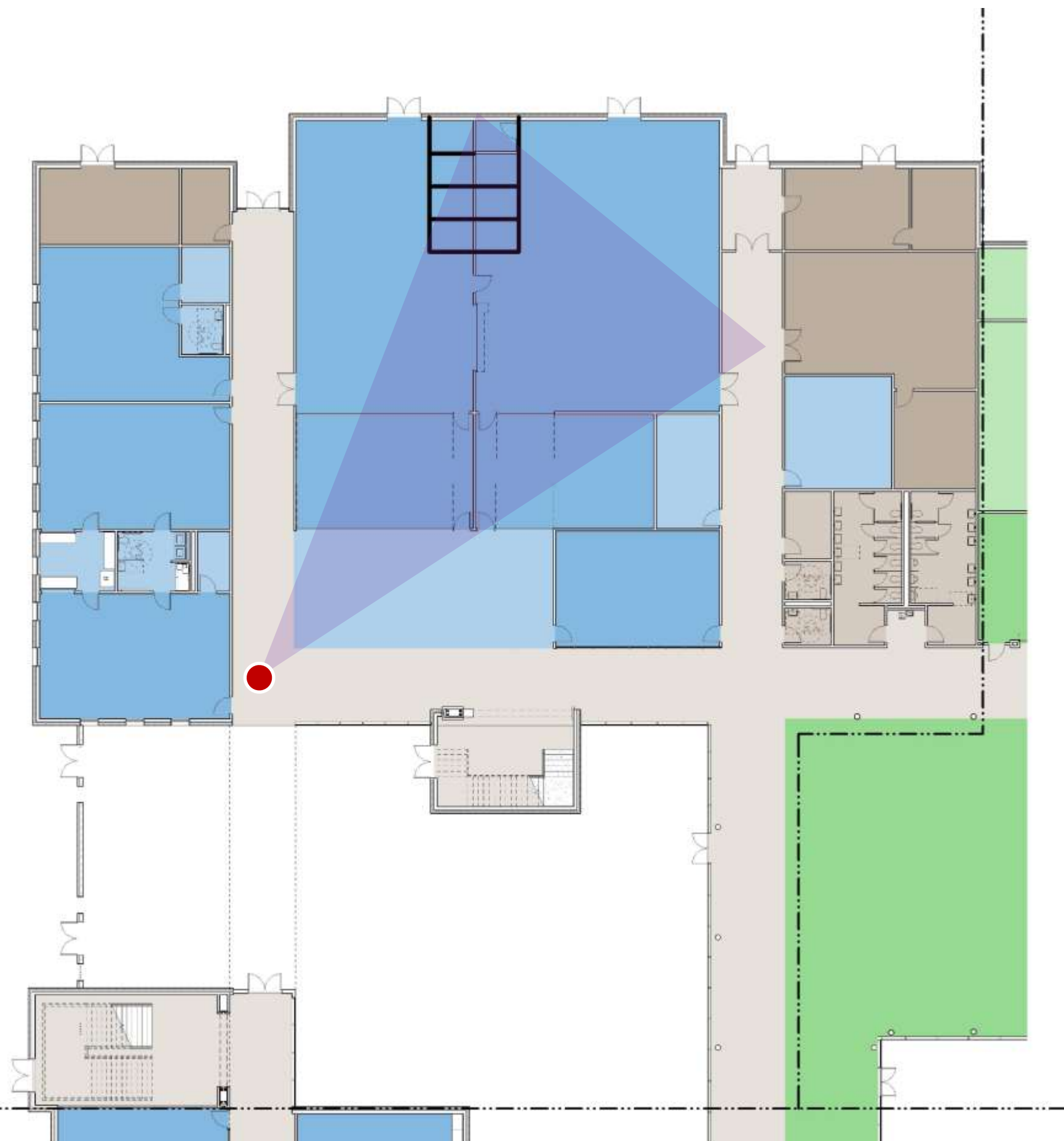


View to Flex-Bridge



CTE  
Flex Area





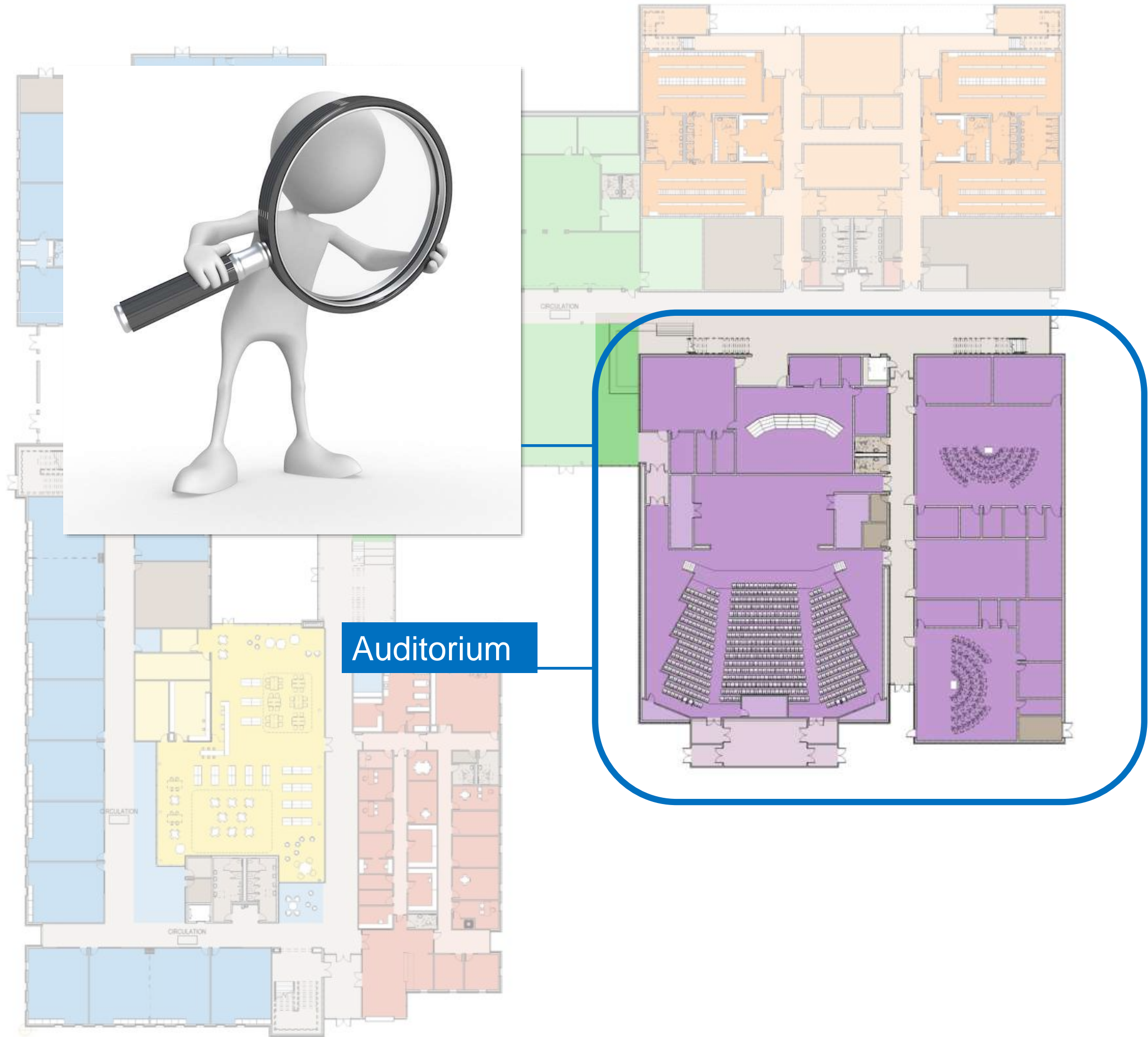
**CTE/FLEX AREA**



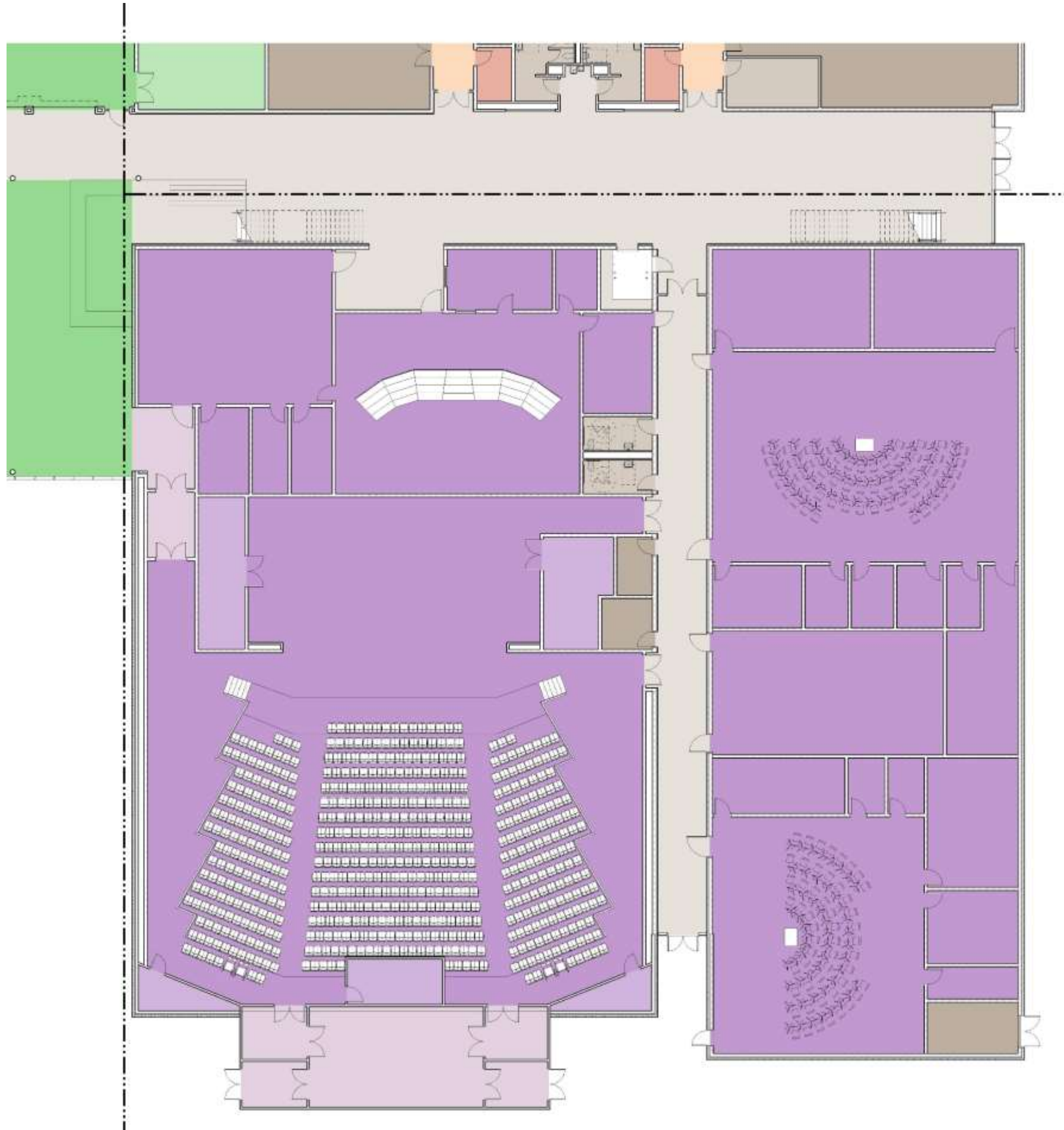


View to CTE Flex Area





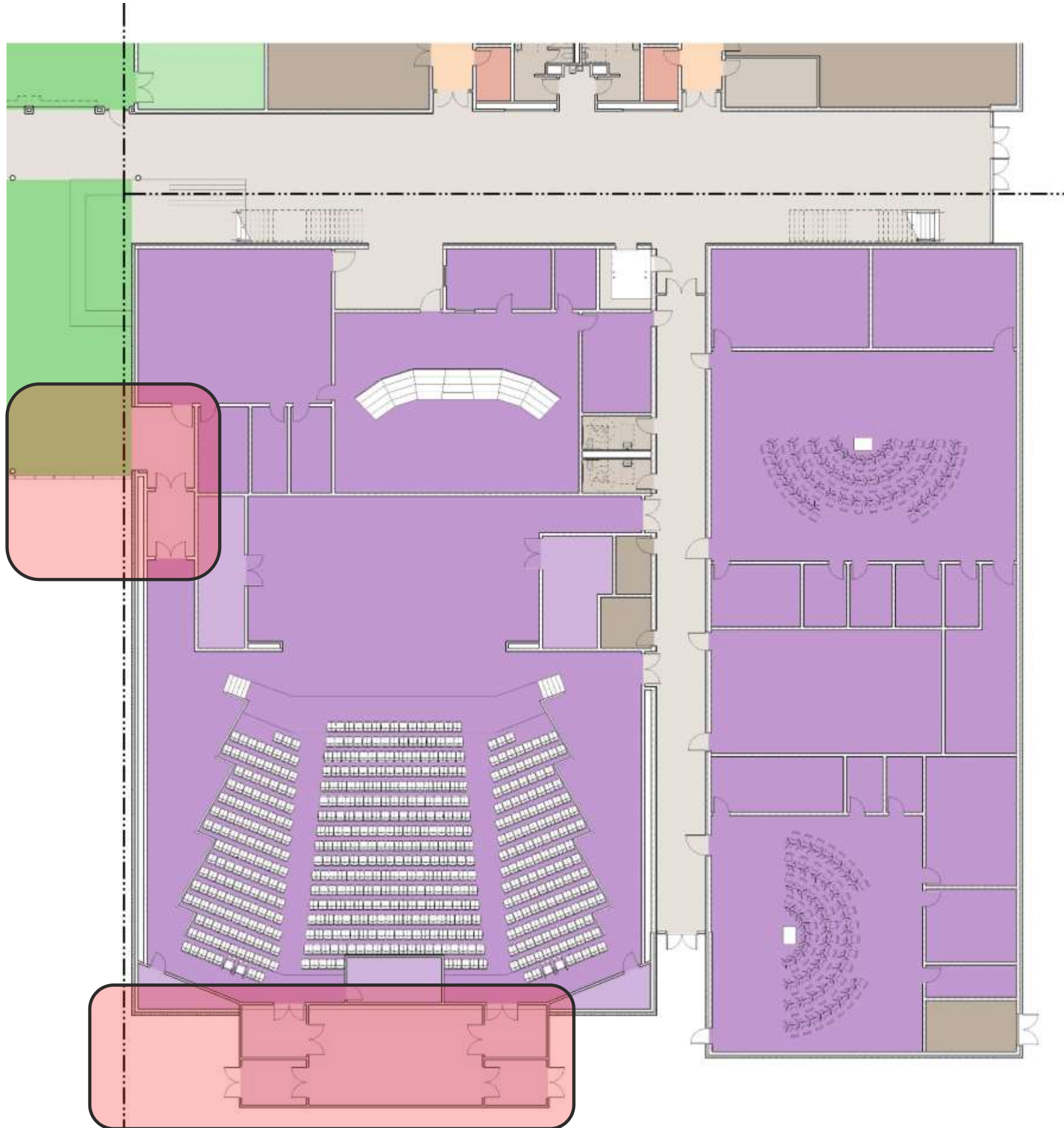




**AUDITORIUM**

**Orientation**

**Entry Points**



**AUDITORIUM**

**Orientation**

**Entry Points**



# Agenda: PAT Meeting #4

5 mins:

1. Welcome & Introductions + Overview

PAT Charge

PAT Process + Objectives/Goals

10 mins:

2. PAT Meeting #3: Recap

Meeting Highlights and PAT Feedback

60 mins:

3. LMS Design Update + Discussion

Site Plan .....PAT Engagement

Floor Plans.....PAT Engagement

5 mins:

4. Closing Remarks

Wrap-up / Next Steps

User Group Meetings Update