



Board Meeting: December 17, 2018



Bond 2017 Update

Middle School South Auditorium

Substantial Completion December 30, 2018

Early Childhood Center

Construction in Progress

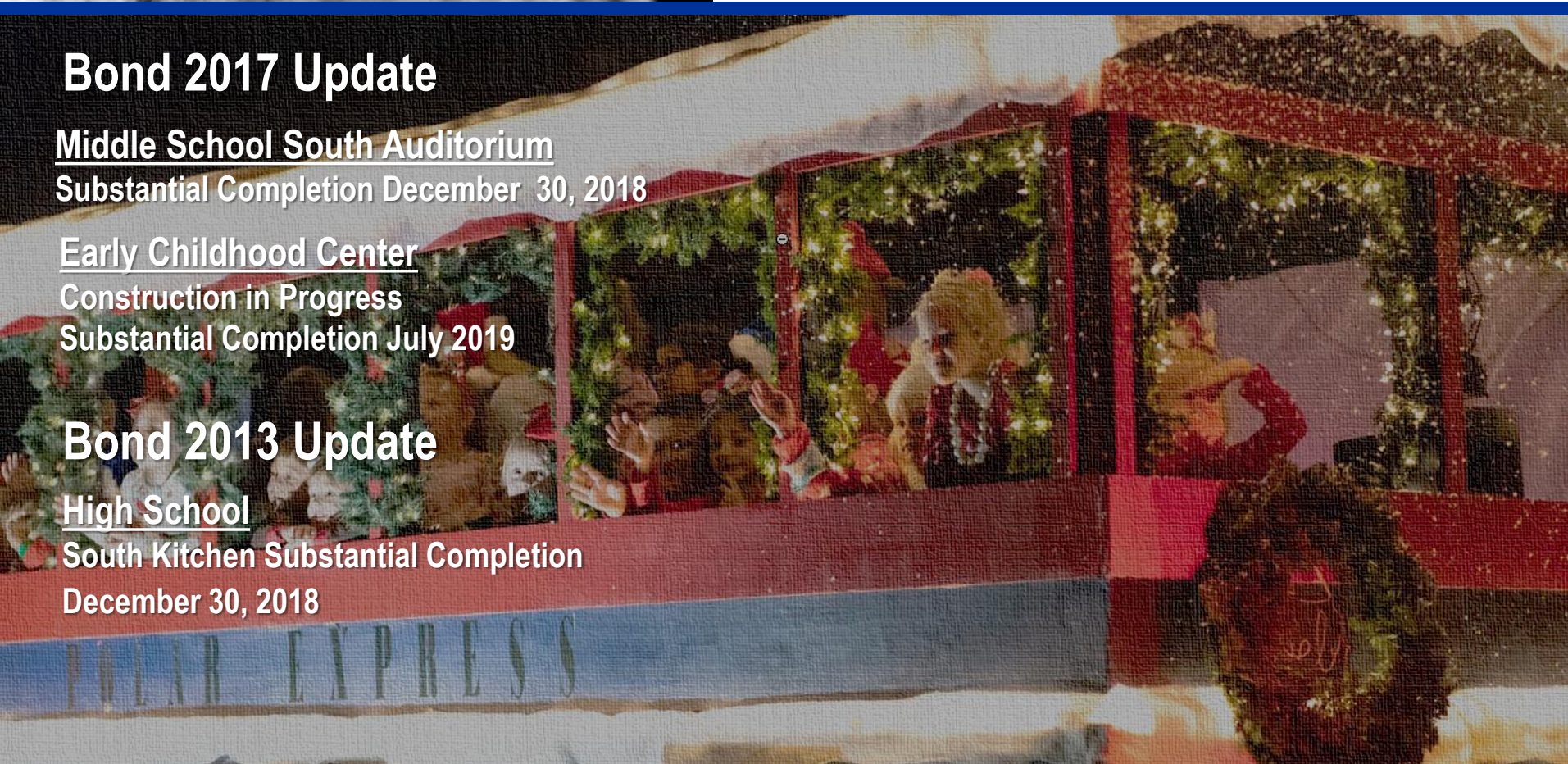
Substantial Completion July 2019

Bond 2013 Update

High School

South Kitchen Substantial Completion

December 30, 2018



UPDATE ON ENERGY MGT. BOARD POLICY CL (LOCAL):

The purpose is to provide SAFETY & ENERGY CONSERVATION
balanced with environmental and indoor air quality:

Energy Management Procedures and Guidelines

(Board Policy CL Local)

The energy management department shall develop a comprehensive program for energy efficient operations in the District. The goal of the program is to maximize energy efficiency throughout the District with proper consideration given to environmental, indoor air quality, and safety issues involving all personnel within the District. The energy management department shall be responsible for the implementation, operation, and enforcement of the program.

In response to our local policy the "Energy Committee" was formed September, 2011 to evaluate our current energy conditions. A representative from each school was included and consisted of Principals, Assistant Principals, Secretaries, Maintenance and Operations, Custodial, and Administration staff. Over the course of the year the committee met nine times and collaboratively, came up with eight procedures to help with safety and energy issues:

1. Only LED light bulbs may be used in personal lamps. These bulbs are not issued by the district.
2. Coffee pot usage is not allowed in the classroom due to safety issues.
3. Toasters are not allowed in the classroom due to safety issues.
4. Plug-in air fresheners are not allowed in the classroom as they violate fire code in Mont Belvieu, Texas.
5. Wax-based, "Scentsy", air fresheners are both an indoor air quality and safety issue. Any air quality issues will be addressed by the Energy Manager.
6. Electric hot plates are not allowed due to safety issues. They also cause an electrical overload to building circuitry.
7. Microwaves are not allowed in classrooms, only in common areas. These appliances cause an electrical overload building circuitry.
8. Space Heaters are not allowed in the district. This appliance causes an electrical overload to building circuitry, and is a safety issue.

ENERGY MGT. AUDITS - UPDATE

Room Number	Non-LED light Bulb	Integrated Pest Management	Unauthorized Microwave	Lights Left On	Unauthorized Heater	Unauthorized Air Fresher
144 Kitchen				1		
140		Food improperly stored				
127				1		
129				1		
128			1			
111				Christmsas tree lights on		
110	1					1

The purpose is to ensure safety and energy savings while complying with the Energy Mgt. Process: these are examples of this month from different campus.

Room Number	Non-LED light Bulb	Integrated Pest Management	Unauthorized Microwave	Lights Left On	Unauthorized Heater	Unauthorized Air Fresher
Hall Lights				half the school		
Library				Christmas lights on		
Library				1		
802				1		
605				1		
402				1		
406				1		
403				1		
404				1		
405				1		
305				Christmas lights on		
202				1		
206				1		
201				1		
Frog Fairway		Food improperly stored				
Multi Purpose Room				all		
119				1		
114				1		

Room Number	Non-LED light Bulb	Integrated Pest Management	Unauthorized Microwave	Lights Left On	Unauthorized Heater	Unauthorized Air Fresher
105	1					
Hall A				all		
172				all		
Auditorium				all		
Girls Lockerroom				all		
Boys Lockerroom				all		
158				all		
160				all		
194e				all		
194d				all		
194c				all		
154	1					
151				all		
142	1					
146	1					
113				Christmas lights on		
c198	1					

As evidenced from the audits, the Principals and Staffs are doing an excellent job in participating and complying with safe and energy efficient practices!



Incentive Check Request

CenterPoint Energy

2018 SCORE/CitySmart Program



Year	Participant	Contact	Phone	# of Measures	CLEAResult Contact
2018	Barbers Hill ISD	Ricky Shelton	281-576-2221 ext. 1296	8	Joshua Campbell

This Invoice lists the project(s), demand savings, energy savings, and amount of incentive to be paid to the participating organization for the completion of the project(s) listed below.

Building Name	Address	County	Account # / ESI ID	Rebate ID	Project Type	kW	kWh	Incentive
Barbers Hill Intermediate School	9600 Eagle Drive, Baytown, TX 77523	Chambers	1008901000156470015100	RBT-1889436	HVAC-DX/Heat Pump / New Construction	22.16	58,522	\$5,602.44
Barbers Hill Intermediate School	9600 Eagle Drive, Baytown, TX 77523	Chambers	1008901000156470015100	RBT-1889436	Chiller Air Cooled - Screw/Scroll/Reciprocating / New Construction	31.62	140,956	\$14,952.80
Barbers Hill Intermediate School	9600 Eagle Drive, Baytown, TX 77523	Chambers	1008901000156470015100	RBT-1889439	Light Emitting Diode (LED) / New Construction	10.47	51,806	\$3,171.59
Barbers Hill Middle School	9600 Eagle Drive, Baytown, TX 77523	Chambers	1008901000156470015100	RBT-1889435	Light Emitting Diode (LED) / New Construction	7.47	42,120	\$2,354.84
Barbers Hill Middle School	9600 Eagle Drive, Baytown, TX 77523	Chambers	1008901000156470015100	RBT-1889435	Lighting Controls / New Construction	2.56	14,435	\$807.01
Barbers Hill High School	9696 Eagle Drive, Mont Belvieu, TX 77580	Chambers	1008901023814231870103	RBT-1889432	Light Emitting Diode (LED) / New Construction	7.06	39,825	\$2,225.59
Barbers Hill High School	9696 Eagle Drive, Mont Belvieu, TX 77580	Chambers	1008901023814231870103	RBT-1889432	Lighting Controls / New Construction	0.35	1,986	\$110.33
Barbers Hill High School	9696 Eagle Drive, Mont Belvieu, TX 77580	Chambers	1008901023814231870103	RBT-1889430	Chiller Water Cooled - Centrifugal / Retrofit	1.50	114,370	\$769.26
Grand Total						83.19	464,020	\$29,993.82

TOTAL ENERGY CONSERVATION INCENTIVE REFUND:

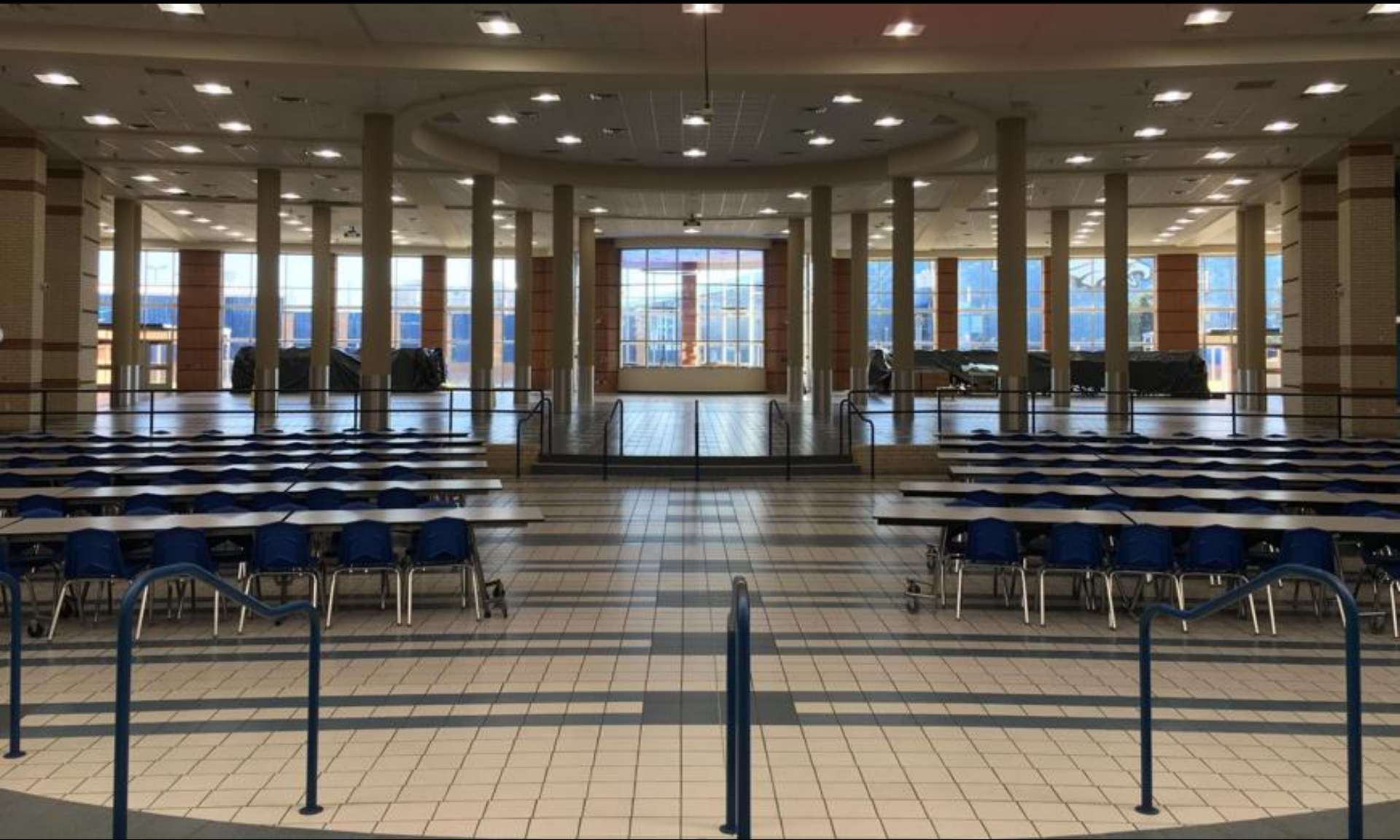
ANNUAL KWH SAVINGS = \$41,297

\$29,993.82

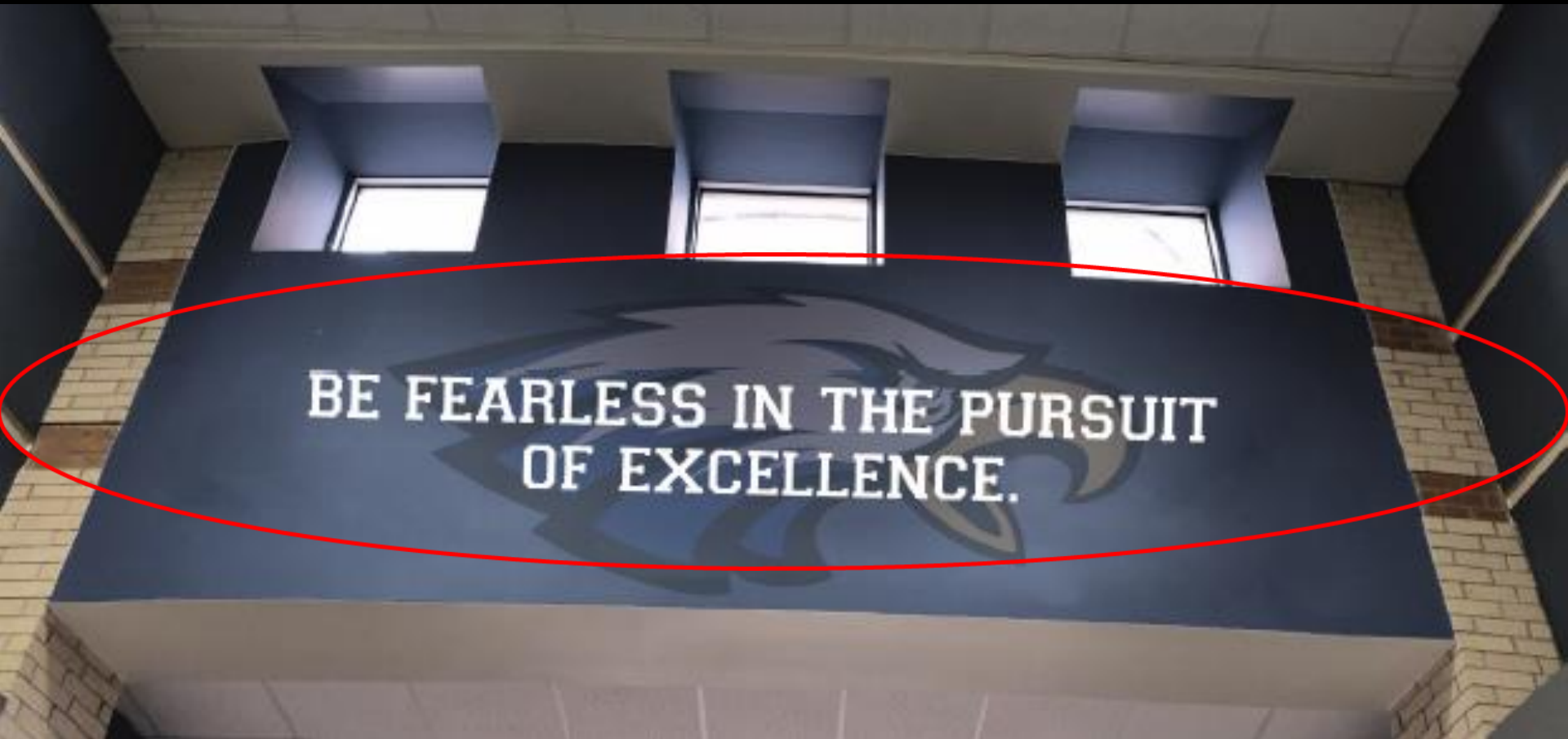






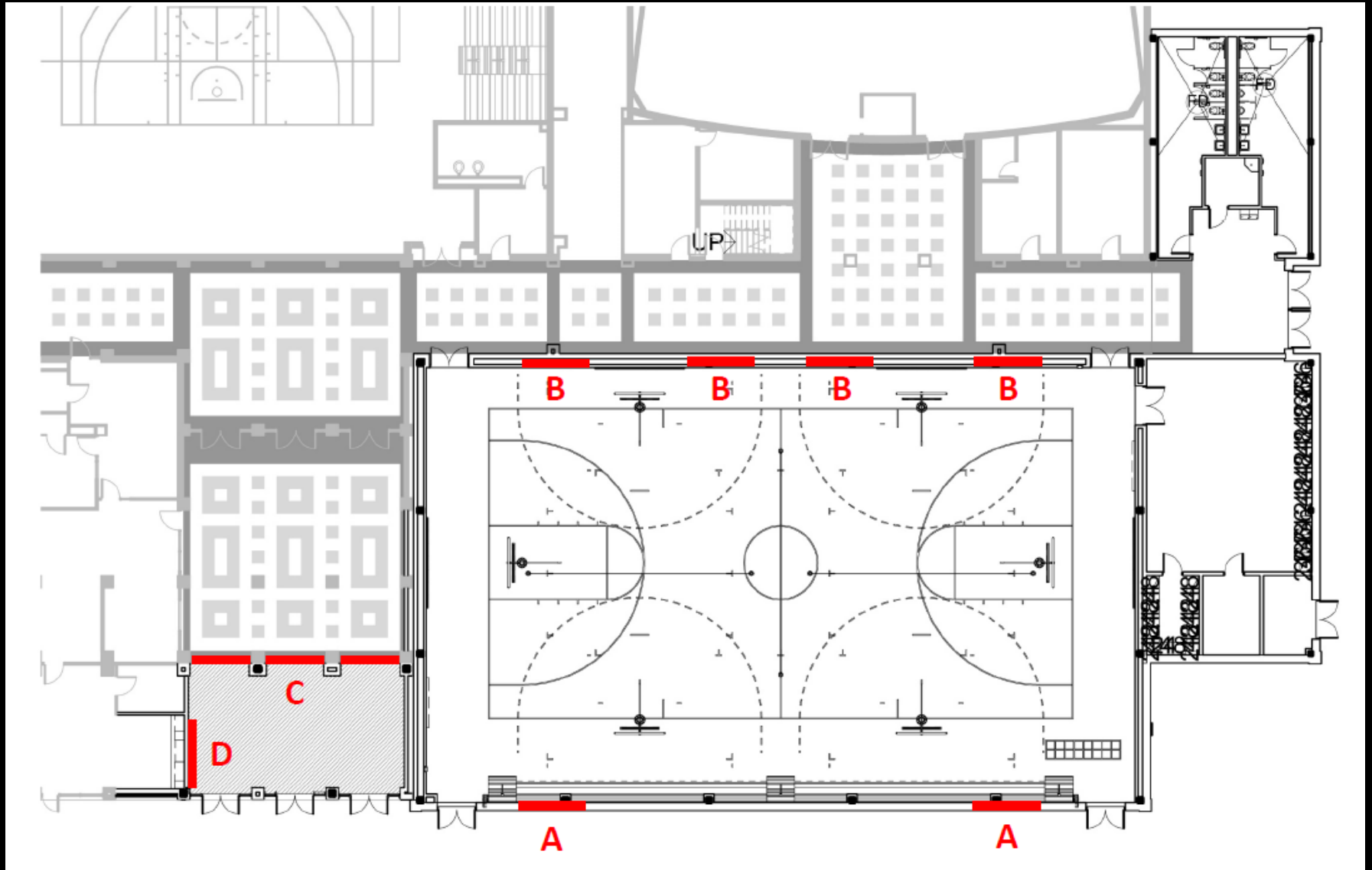








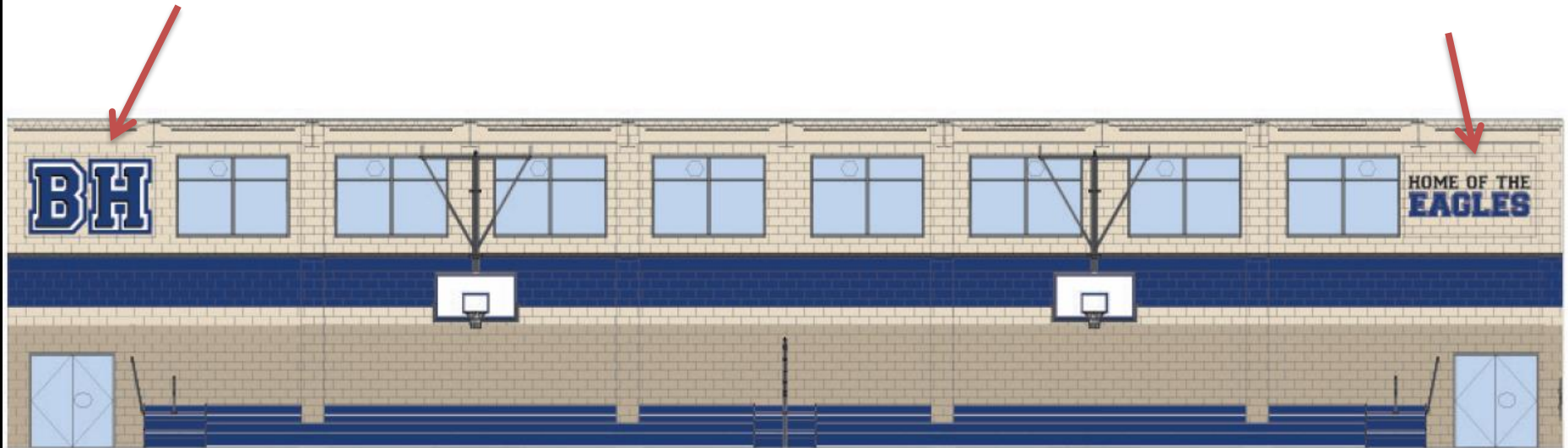
Bond 2018 – Middle School NORTH



Bond 2018 – Middle School NORTH

LOC A

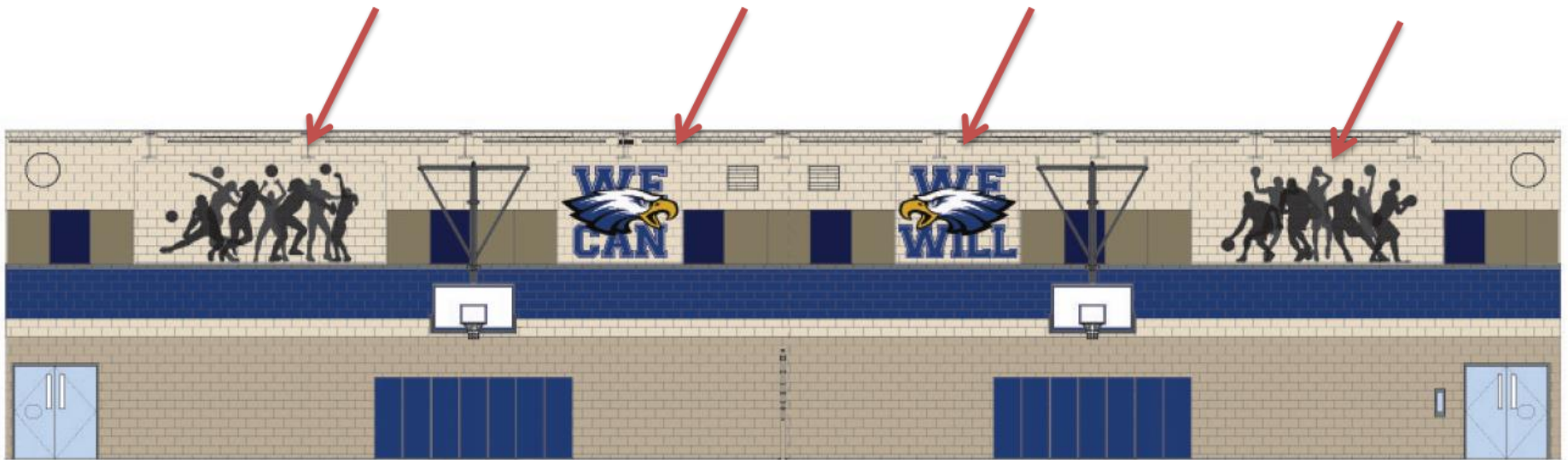
SIDE A

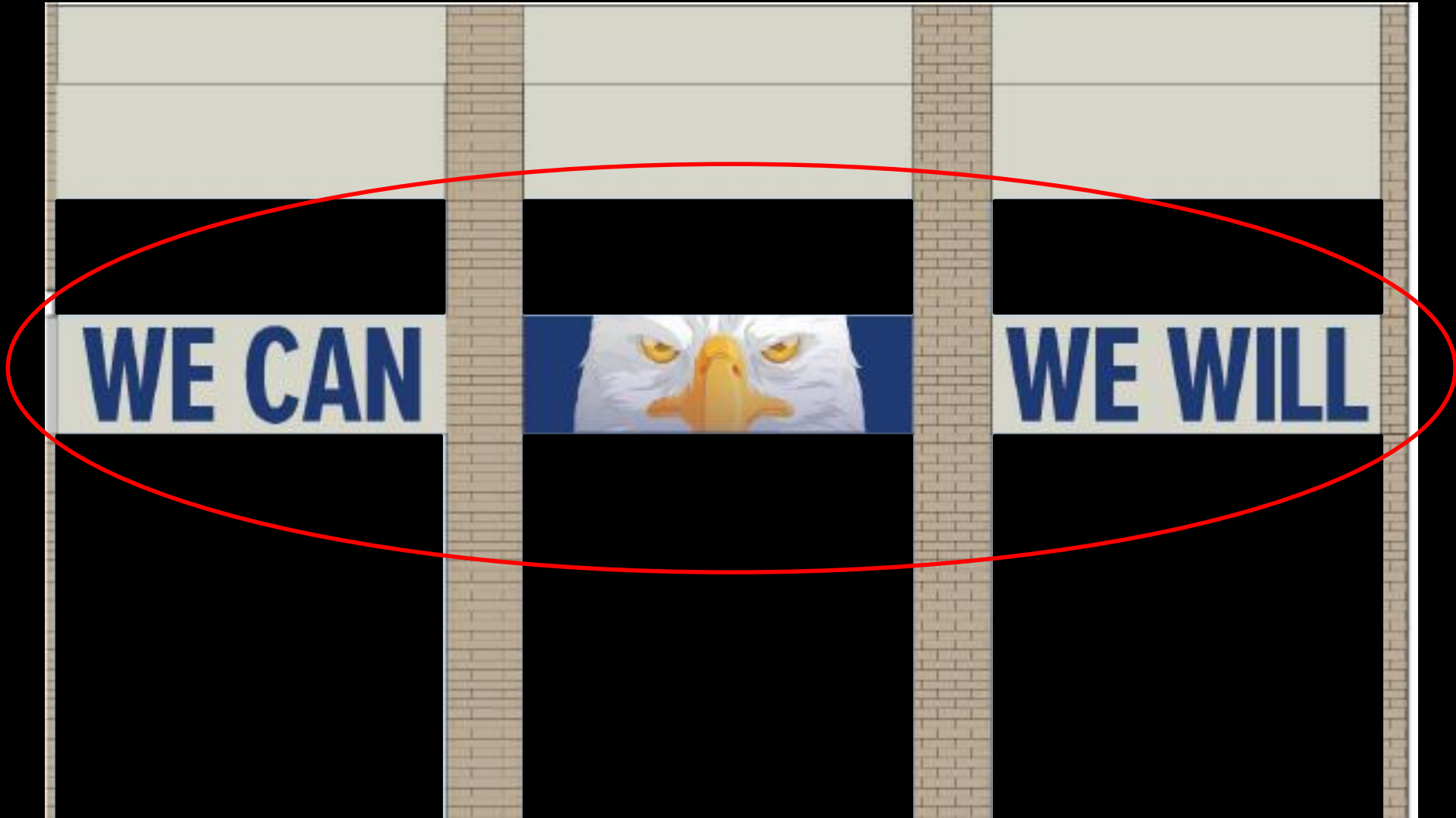


Bond 2018 – Middle School NORTH

LOC B

SIDE B





Bond 2018 – Middle School NORTH



Bond 2018 – Middle School NORTH



Rendering of Proposed MS North Time Line Graphic
North Entry Vestibule - To Be Modified

Bond 2018 – Middle School SOUTH



Bond 2018 – Middle School SOUTH



Bond 2017 - Early Childhood Center



Early Childhood Center Front Entry Rendering

Bond 2017 - Early Childhood Center



Bond 2017 - Early Childhood Center



Pavement - LOC Entrance, Bus Loop, Parent Drop-Off & Stacking Drive



Bond 2017 - Early Childhood Center



ECC-Parent Drop-Off, Parking - Steel Structure Frame & Exterior Walls



Bond 2017 - Early Childhood Center



ECC-Parent Drop-Off, Parking - Steel Structure, Exterior Wall Sheathing



Bond 2017 - Early Childhood Center



Bond 2017 - Early Childhood Center



Bond 2017 - Early Childhood Center



Bond 2017 - Early Childhood Center



Bond 2017 - Early Childhood Center



Bond 2017 - Early Childhood Center



Bond 2017 - Early Childhood Center



Bond 2017 - Early Childhood Center



Barbers Hill ISD - Early Childhood Center
Exterior Progression - Exterior - December 3 2018 - Photo 1



Early Childhood Center Library Cafeteria Area E/H Structural Steel



Bond 2017 - Early Childhood Center



Early Childhood Center Classroom Wing Exterior Wall Framing

Bond 2017 - Early Childhood Center



Barbers Hill ISD - Early Childhood Center
Exterior Progression - Exterior - December 3 2018 - Photo 1 - 122



Early Childhood Center Classroom Wing Area J Wall Framing





Thank You



Barbers Hill ISD - Early Childhood Center
Exterior Progression - Exterior - December 3, 2018 - Photo 1 - 16