

Elmhurst District 205 Achievement Summary Report 2016-2017

Mariann Lemke

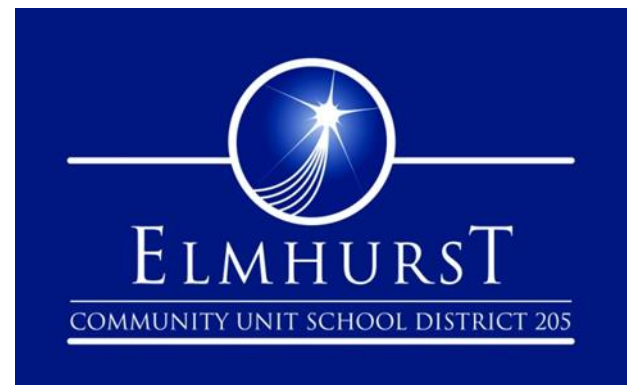
Director of Research and Program Analysis

Dr. Mary Henderson

Assistant Superintendent of Learning and Leadership
Development

Nikki Tammaru

Director of Literacy



Agenda

- Review of KPIs
- Implications for Instruction

Key Performance Indicators (KPIs)

- Achievement HS (SAT Composite)
 - Students on Track for College and Career Readiness – HS
 - Achievement Gap
- Seniors with Post-Secondary Experience
- AP Participation Rate
- Graduation Rate
- 3rd Grade – Reading at Grade Level
- Achievement Elem/Middle (PARCC & MAP)
 - Students on Track for College and Career Readiness
 - Achievement Gap
- ELL Achievement
- NWEA MAP Average Growth

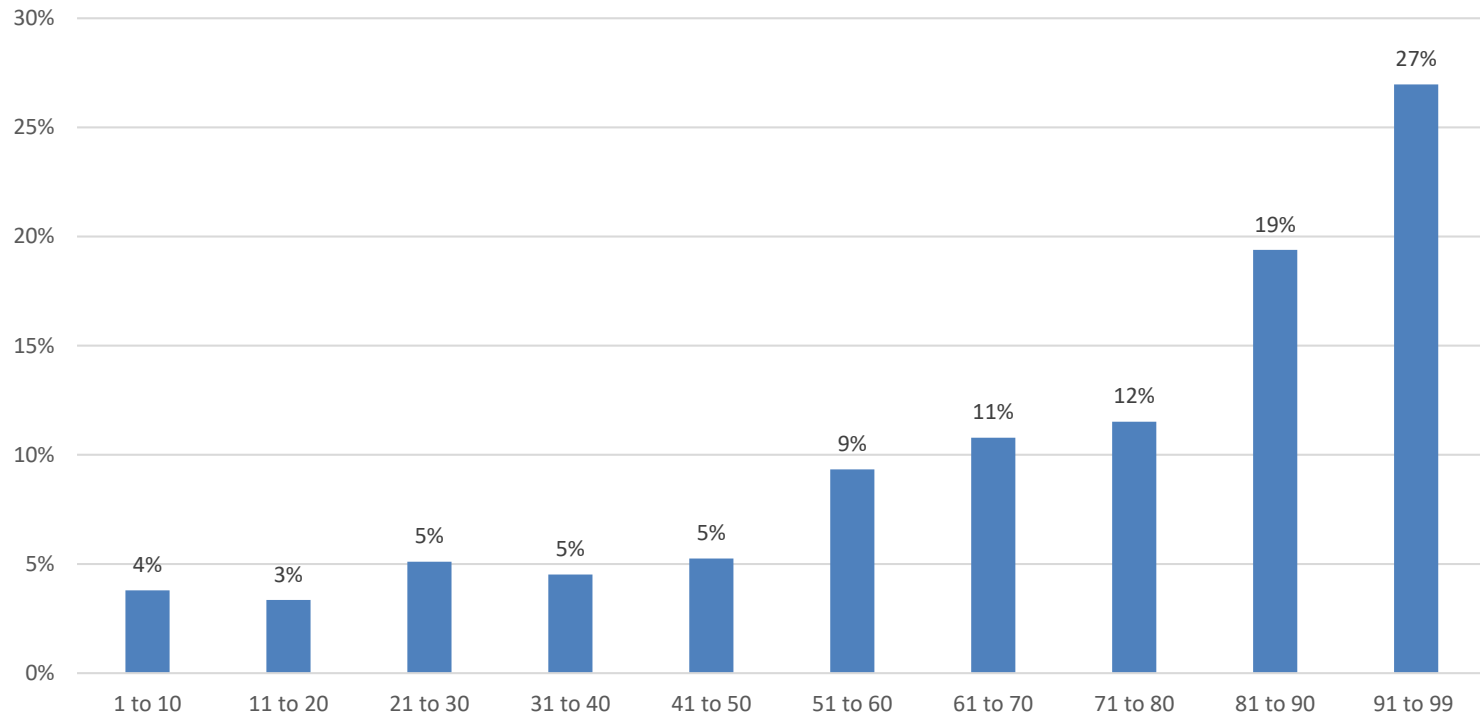
SAT Scores

Average total score for Grade 11 students

- Total score: 1162
- Math: 580
- Evidence-based reading and writing: 582

SAT Total Score

Distribution of SAT National Percentiles



College and Career Readiness-HS

College Board Benchmarks for college and career readiness are 480 (EBR) and 530 (Math).

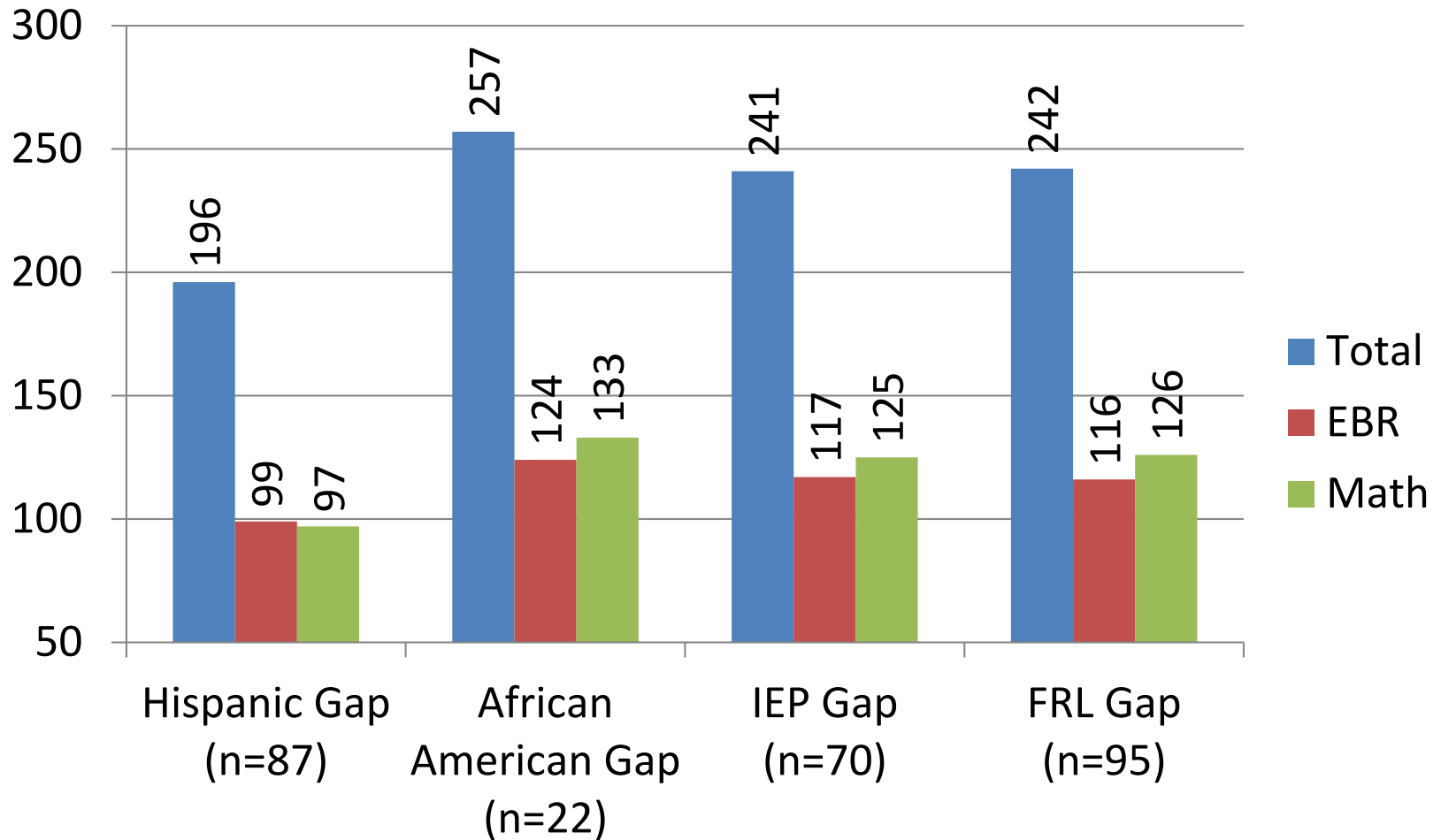
- 85% of students meet the EBR benchmark
- 68% of students meet the math benchmark

Previous district ACT benchmark was 23

- 56% of students meet this benchmark using ACT-SAT concordance information*

Achievement Gap

SAT Achievement Gap



Post-Secondary Experience

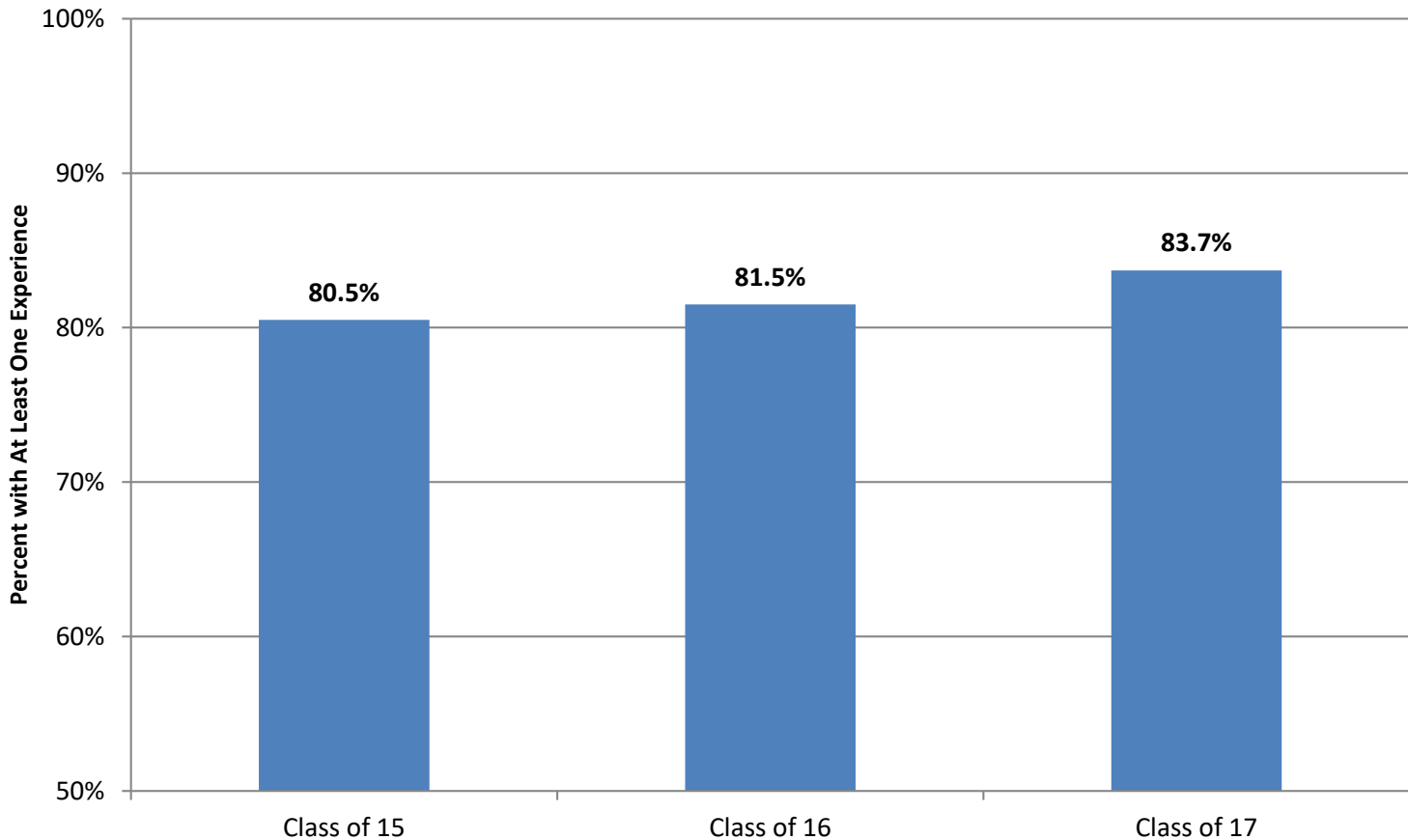
The percent of seniors that have had at least one post-secondary experience in high school.

Examples:

- AP Courses
- ACP Courses
- Dual Credit Courses
- Courses with Industry Certification

Post-Secondary Experience

Seniors with at Least One Post-Secondary Experience



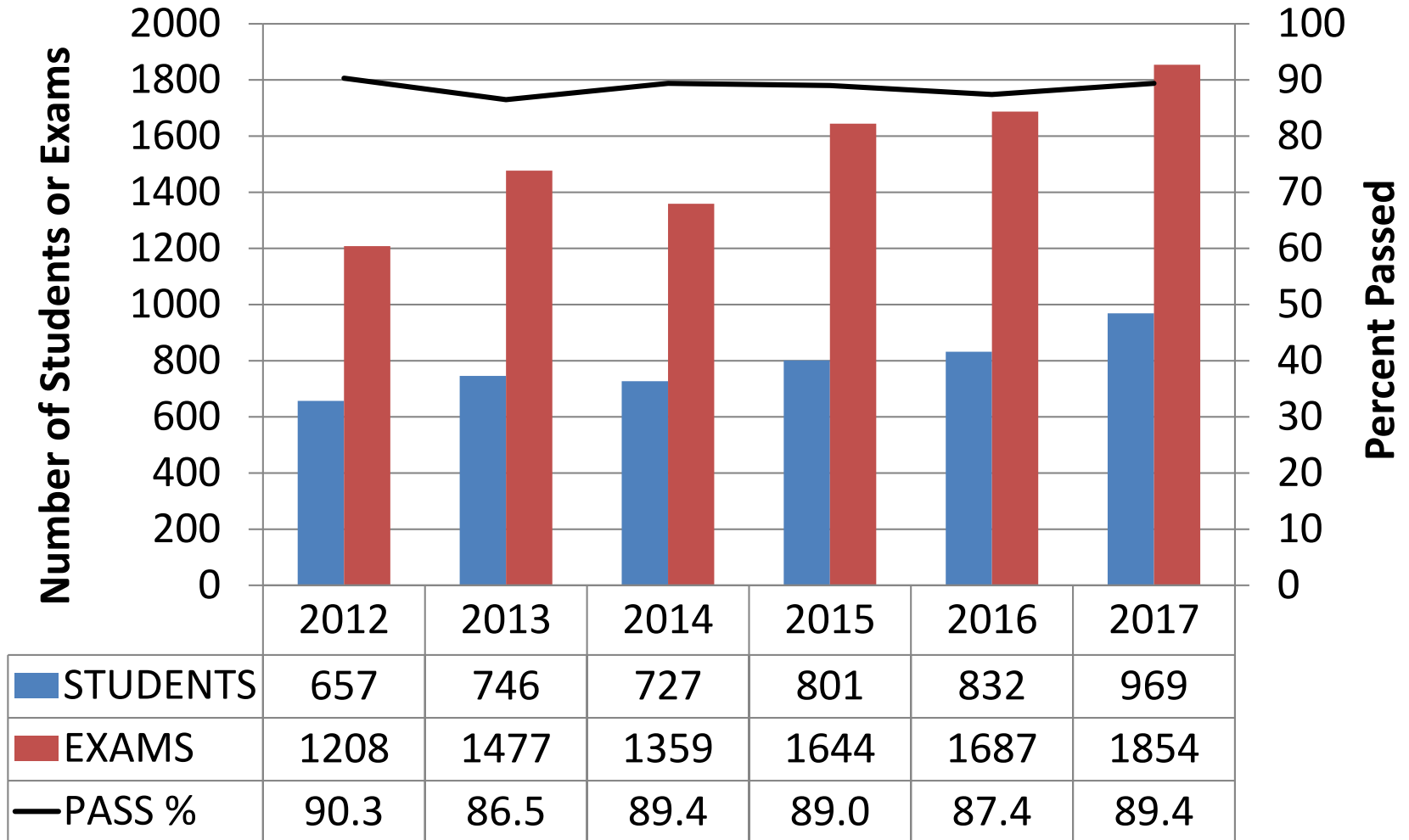
AP Participation

The percent of eligible students participating in at least one AP course.

2013-2014:	37.5%
2014-2015:	41.6%
2015-2016:	42.1%
2016-2017:	35.4%

AP Participation

Six Year AP History



Graduation Rate

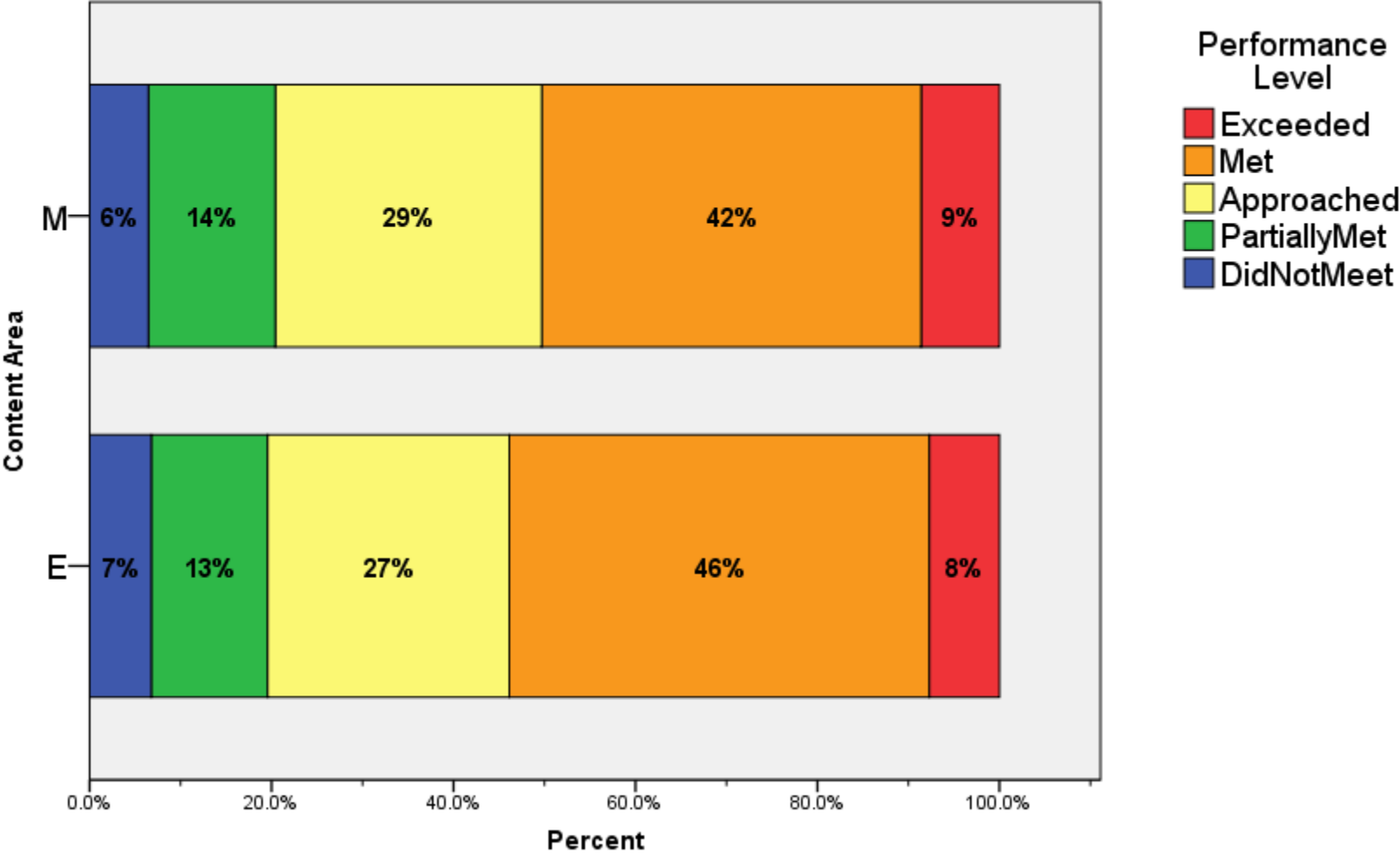
The Four Year Cohort Graduation Rate as defined by ISBE.

2014-2015: 94.4%

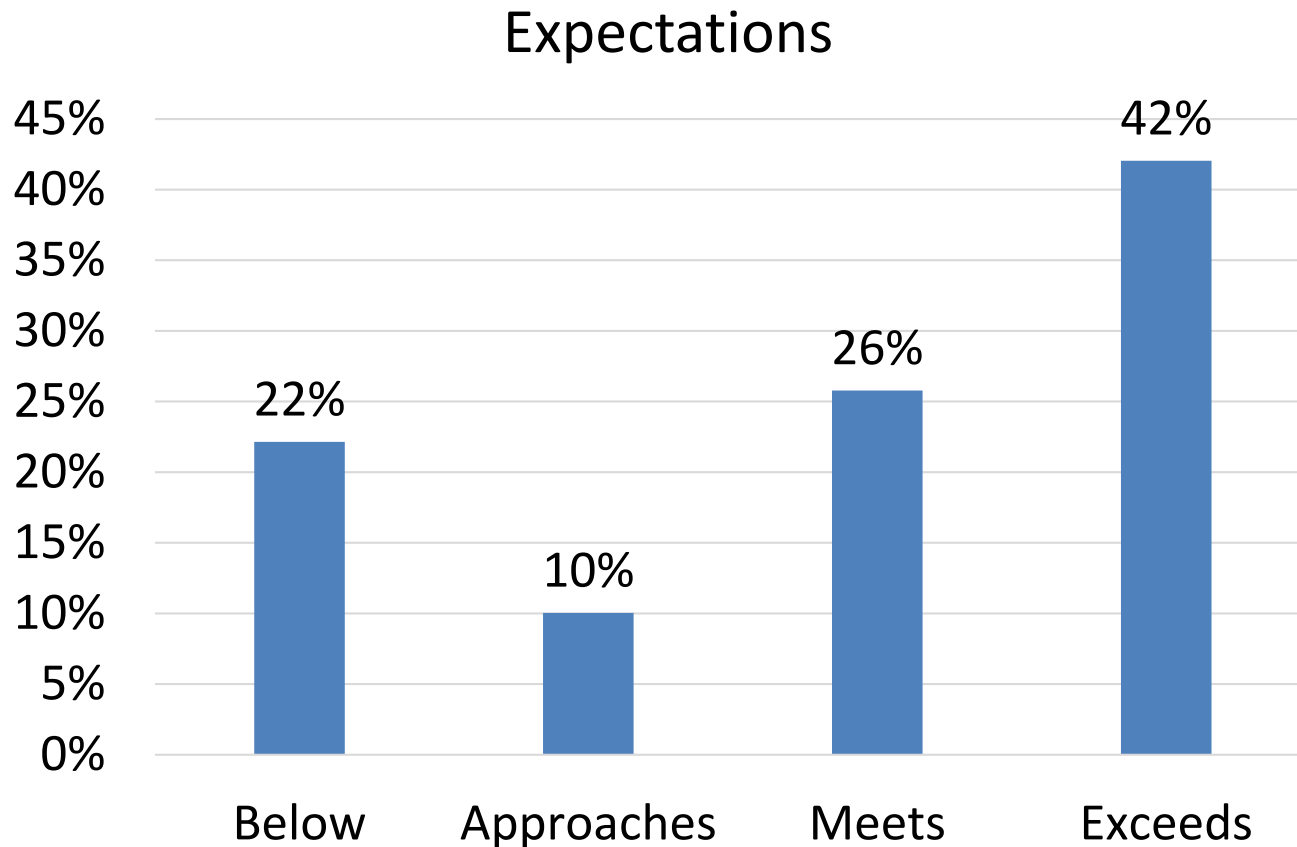
2015-2016: 94.1%

2016-2017: 95.0%

PARCC Achievement



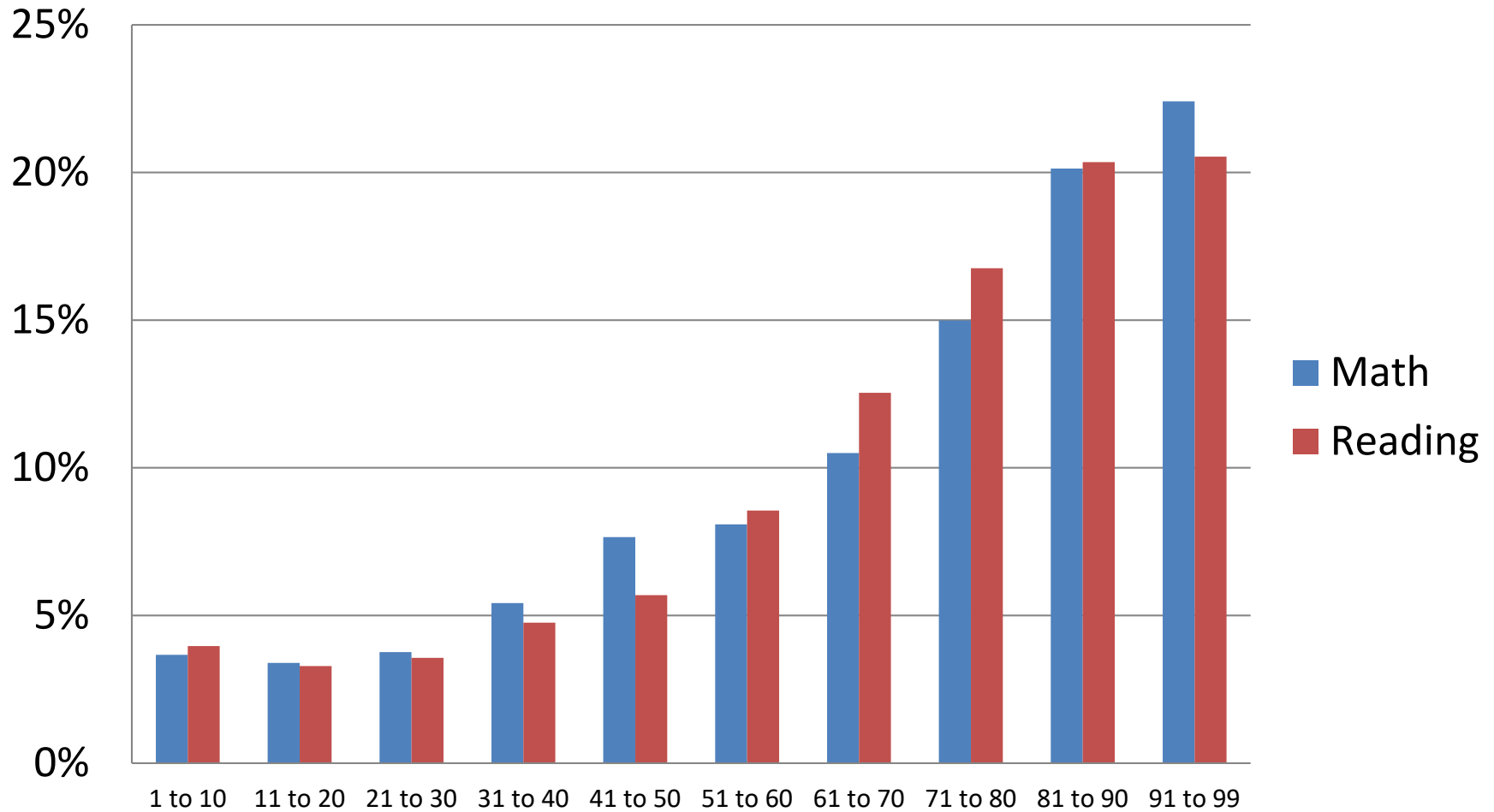
3rd Grade – Reading on Grade Level



Based on Fountas & Pinnell Fall 2017 Grade 4 students beginning of year
PARCC Grade 3 data from 2017 shows 54% of 3rd graders met or exceeded standards in ELA

NWEA MAP Achievement

Distribution of MAP Percentiles



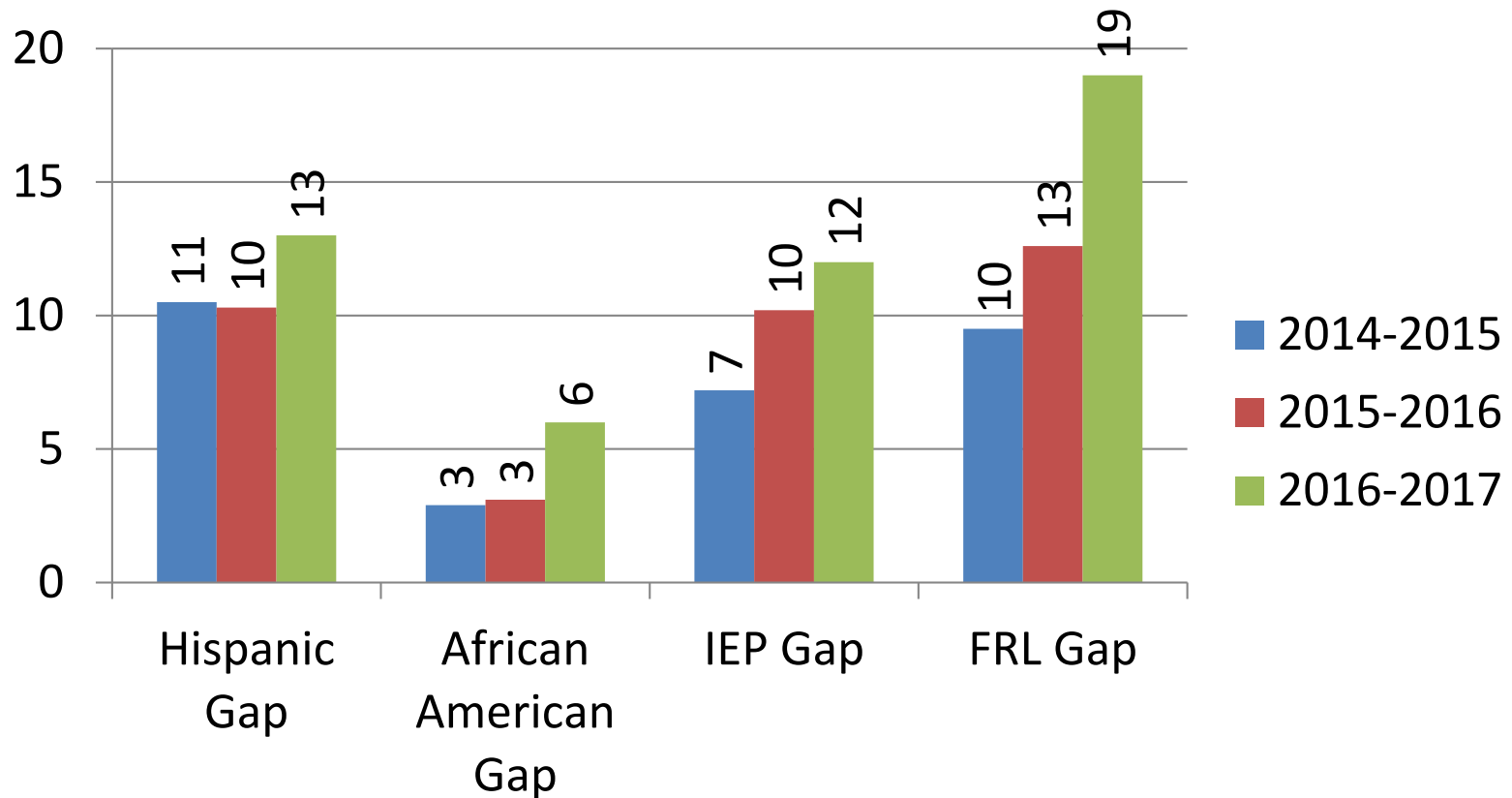
Achievement Gap

Elementary and Middle Schools

The gap in average RIT score for the fall NWEA MAP assessment.

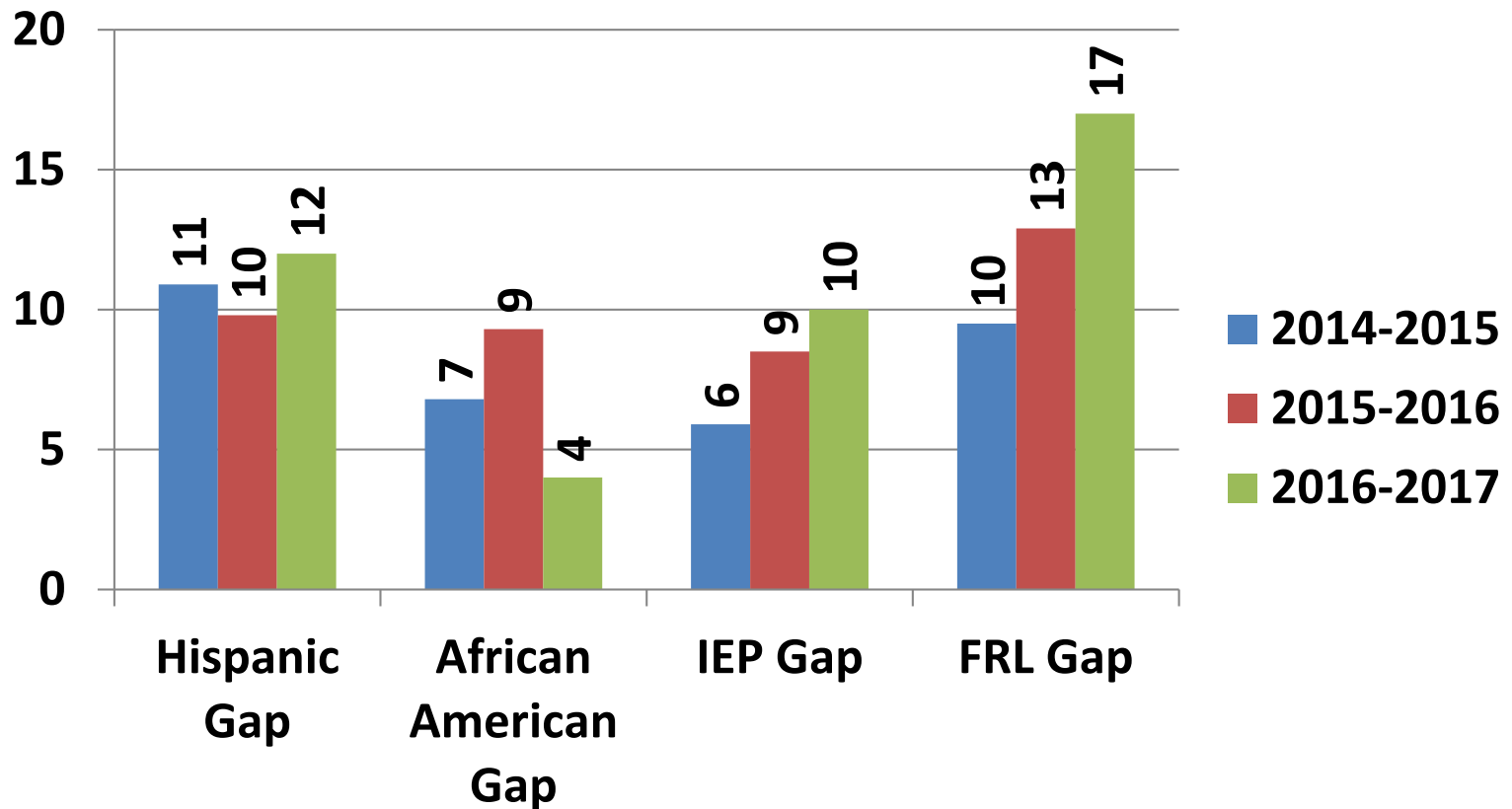
Achievement Gap

Fall MAP Achievement Gap - Elementary Reading



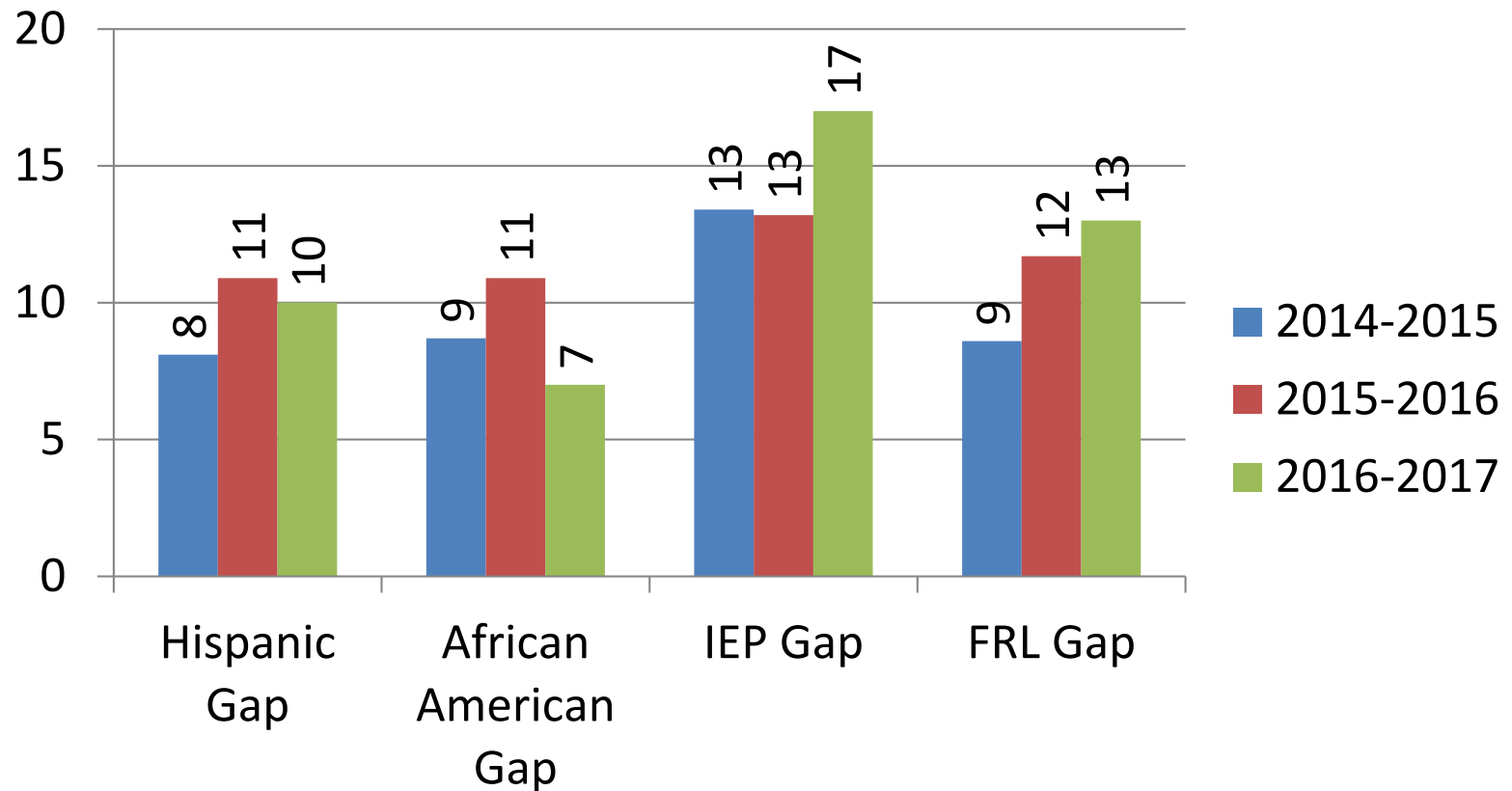
Achievement Gap

Fall MAP Achievement Gap - Elementary Math



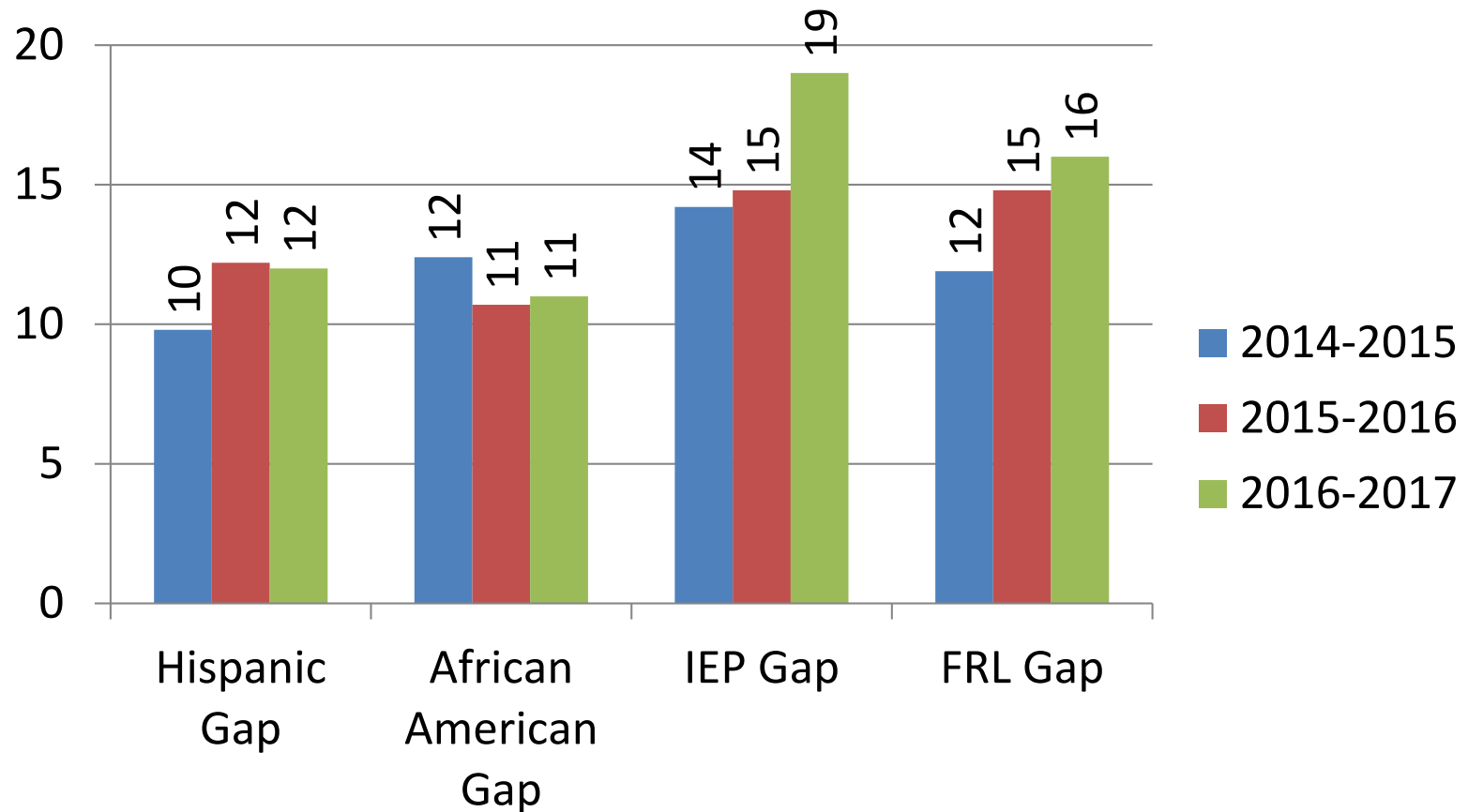
Achievement Gap

Fall MAP Achievement Gap - Middle School Reading



Achievement Gap

Fall MAP Achievement Gap - Middle School
Math



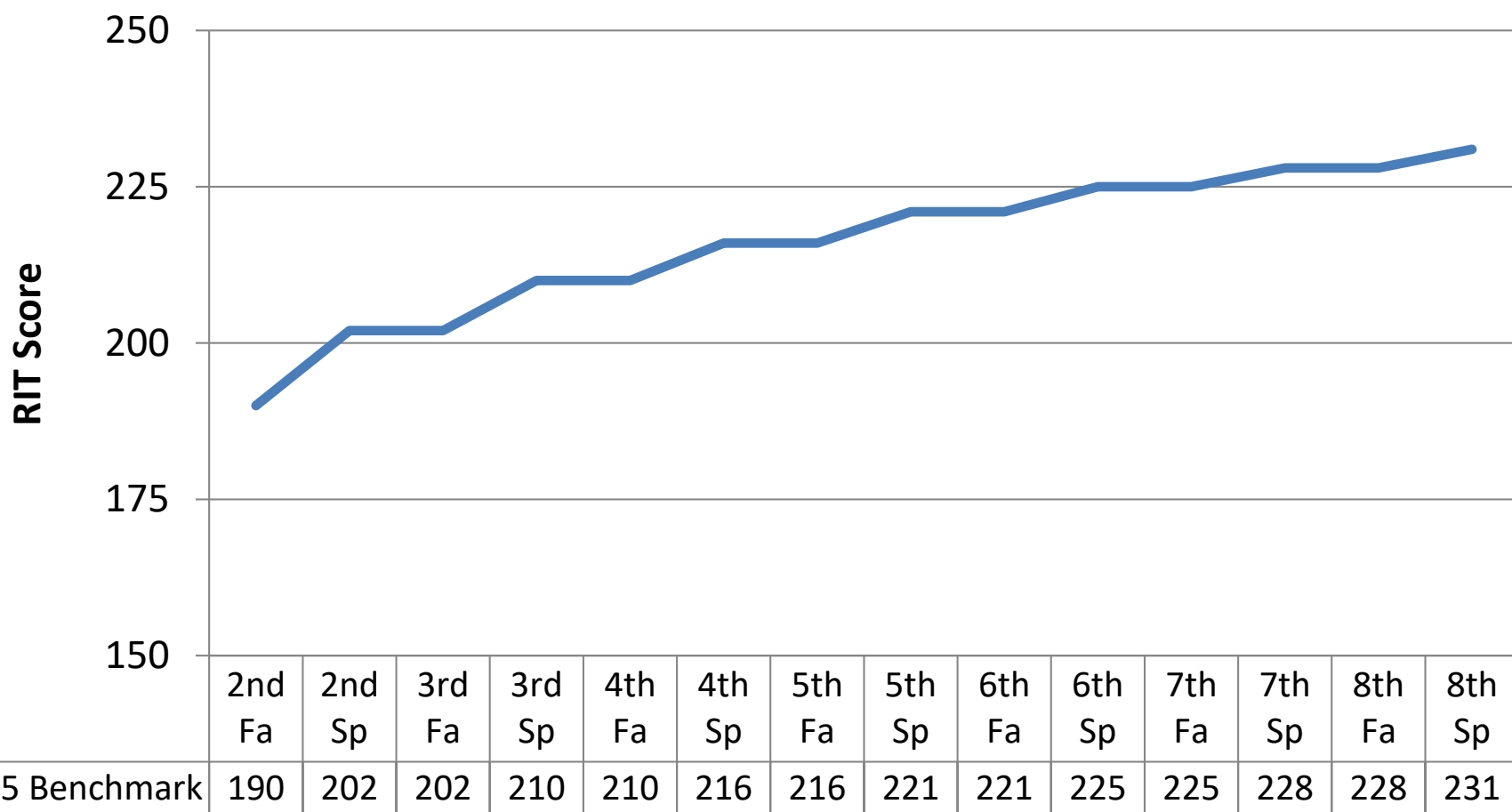
On Track for College and Career Readiness

Elementary and Middle Schools

The percent of students at or above the District 205 Trajectory score for the fall NWEA MAP assessment. Students are tracked as a cohort at each level.

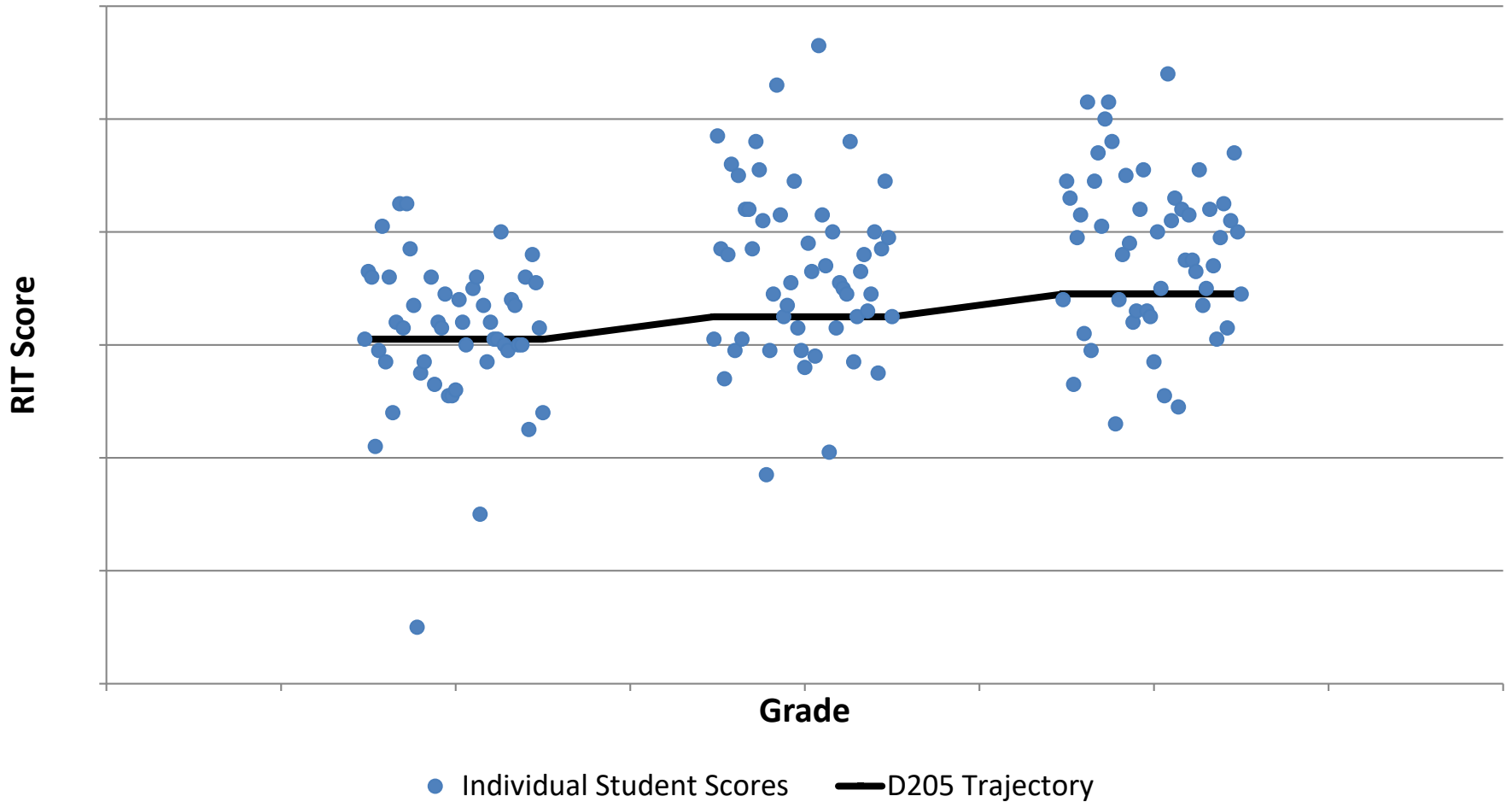
On Track for College and Career Readiness

On Track for College and Career Readiness Reading Benchmarks



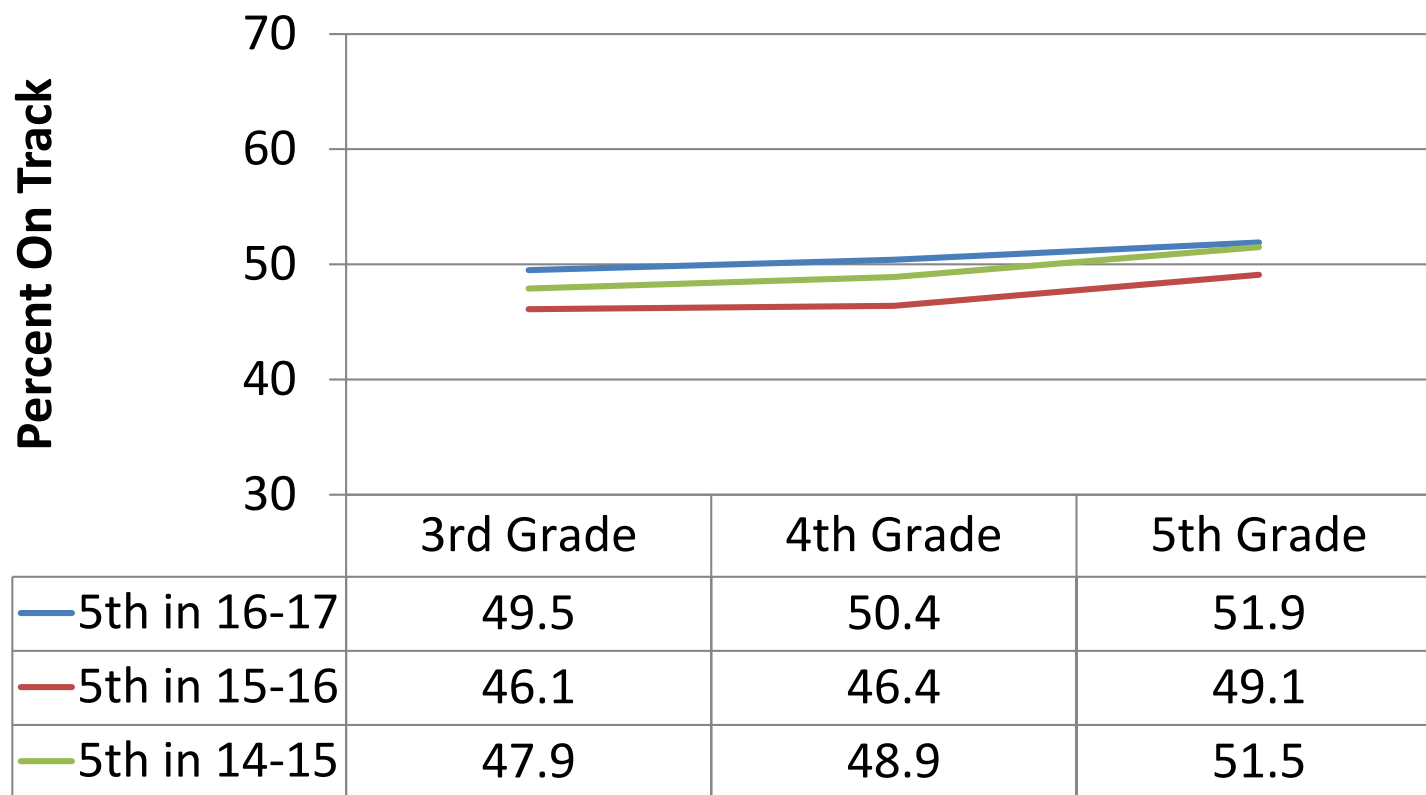
On Track for College and Career Readiness

On Track Cohorts



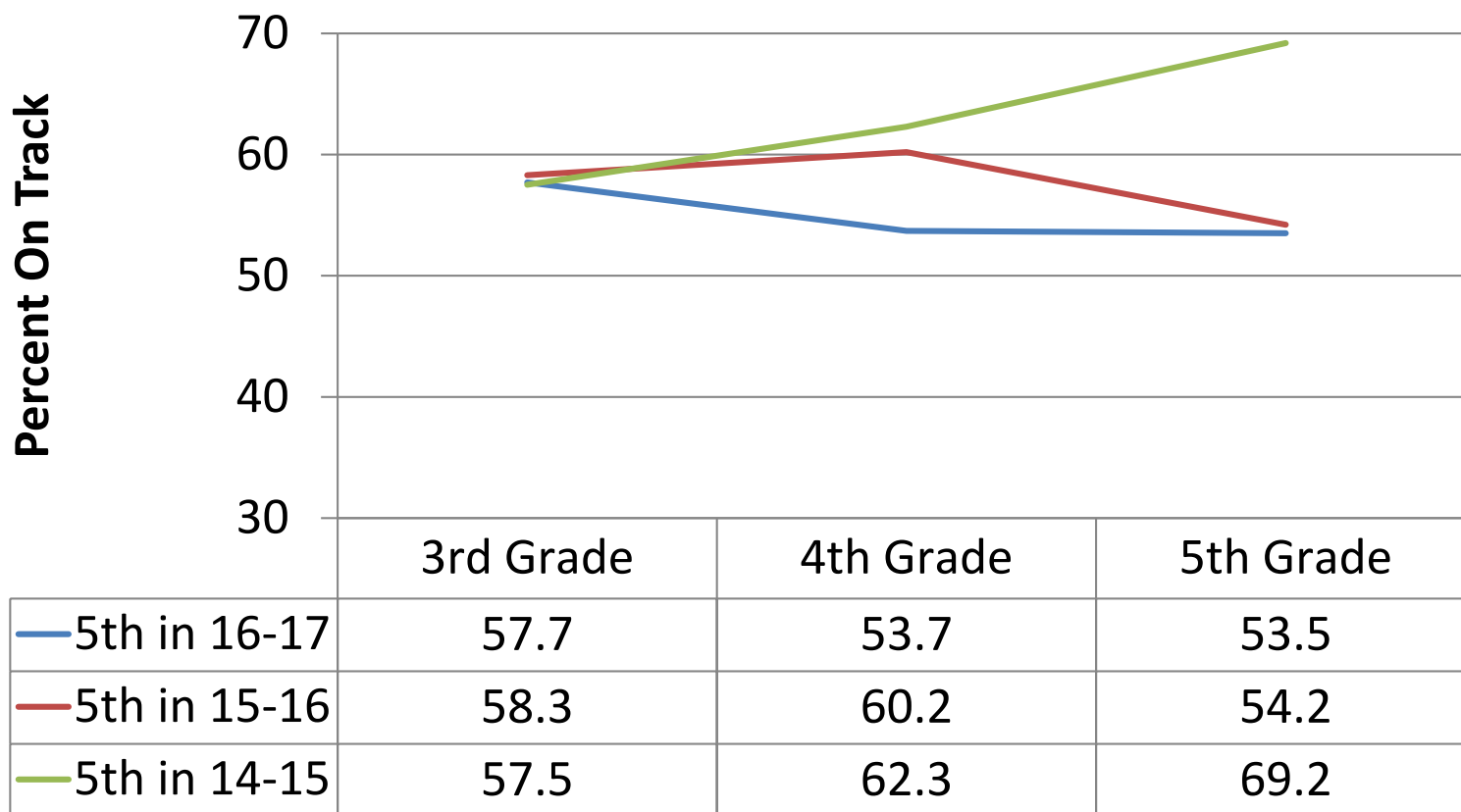
On Track for College and Career Readiness

On Track Cohorts - Elementary Reading



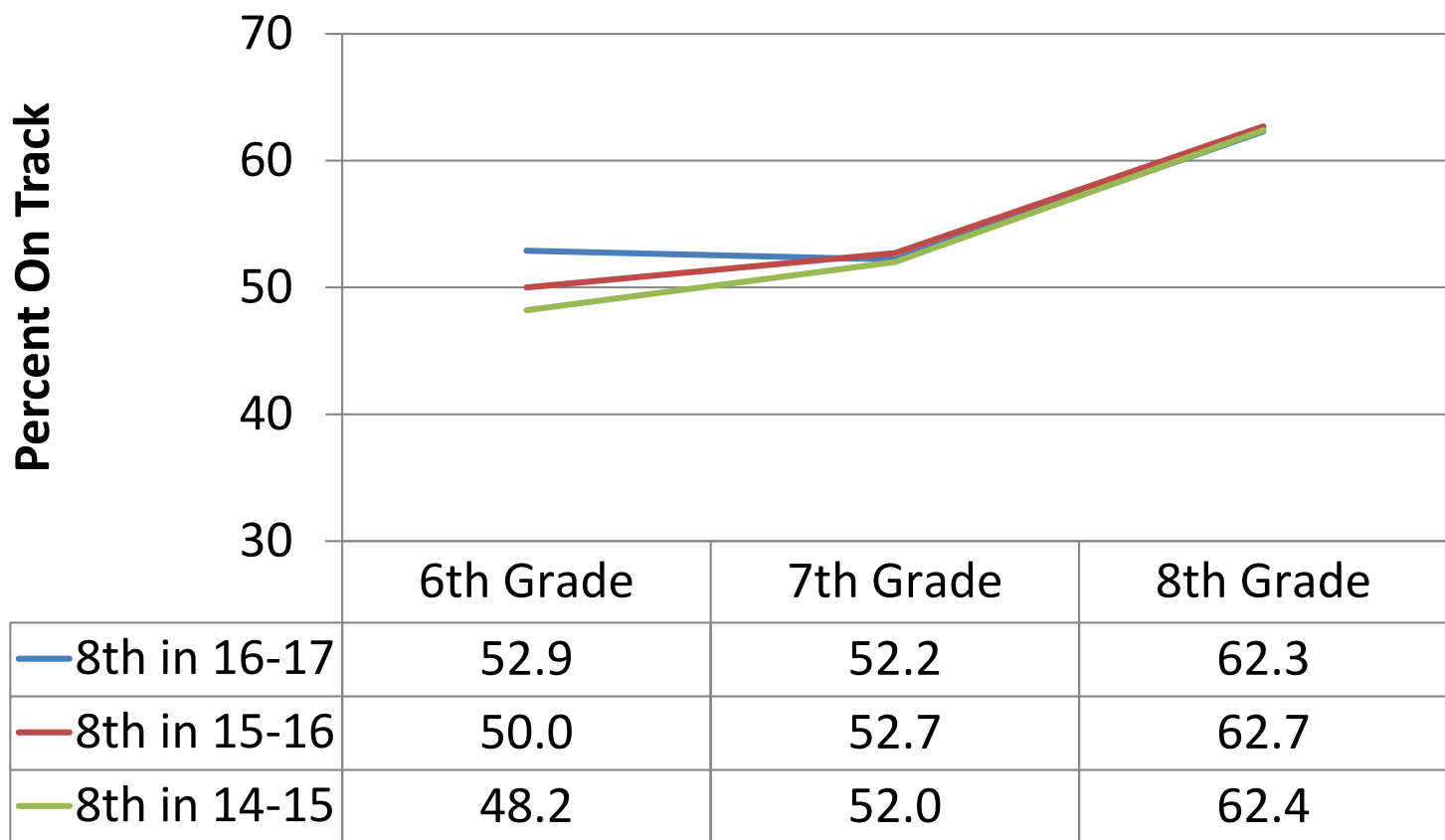
On Track for College and Career Readiness

On Track Cohorts - Elementary Math



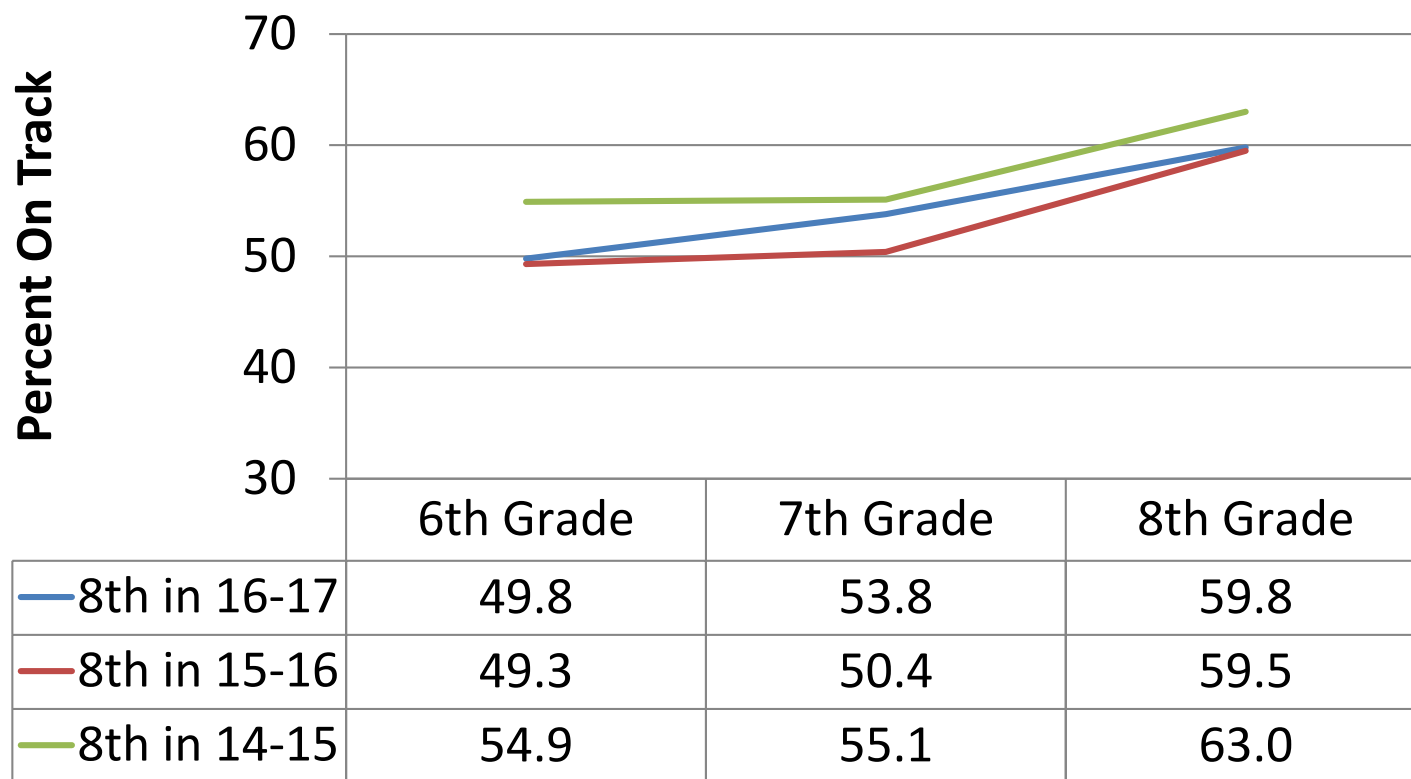
On Track for College and Career Readiness

On Track Cohorts - Middle School Reading



On Track for College and Career Readiness

On Track Cohorts - Middle School Math



ELL Progress

Measures the percent of our former ELL students that meet our college and career readiness trajectory.

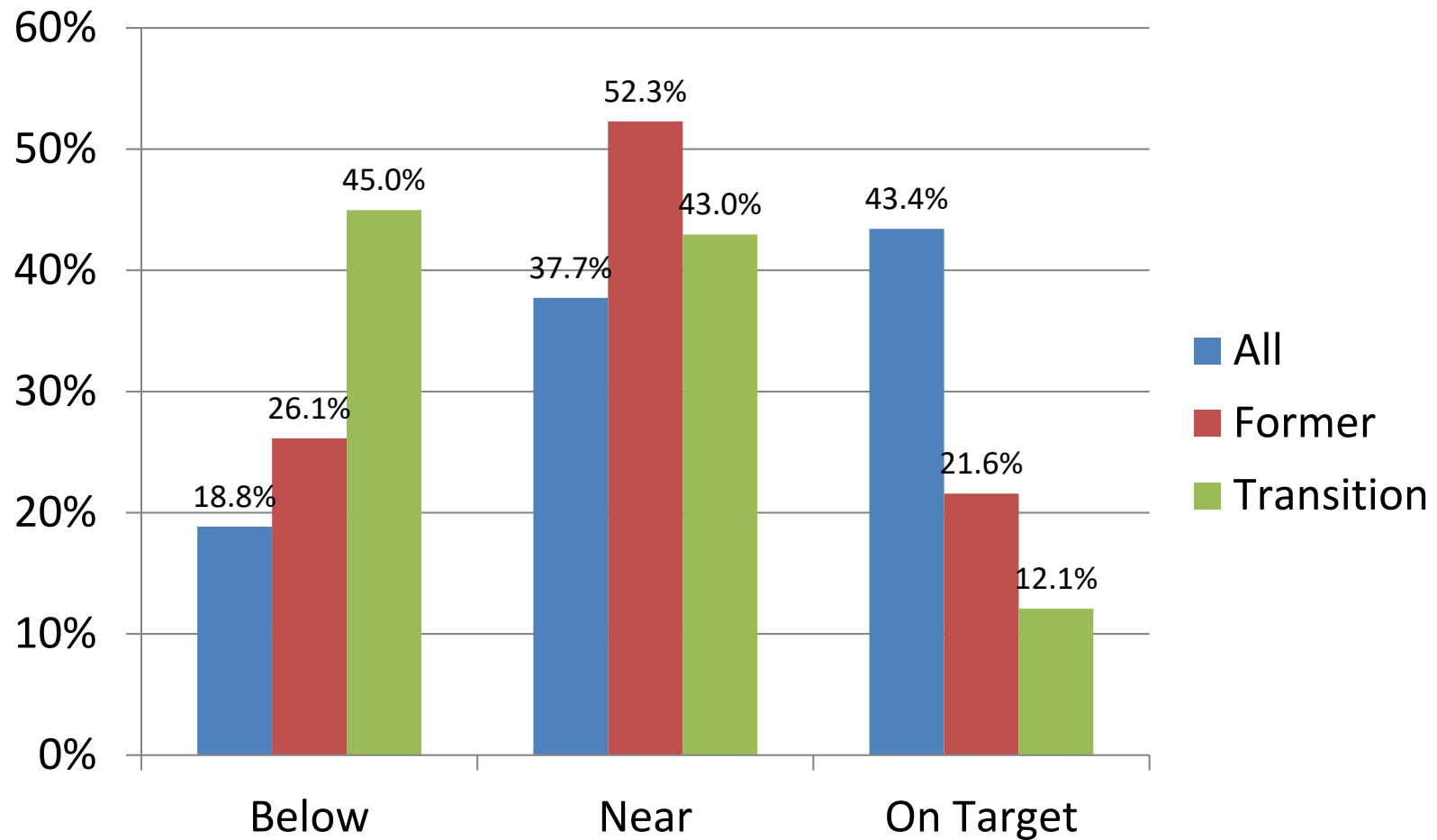
Former students are divided into two groups:

ELL-Transition: one or two years since exit

ELL-Former: more than two years since exit

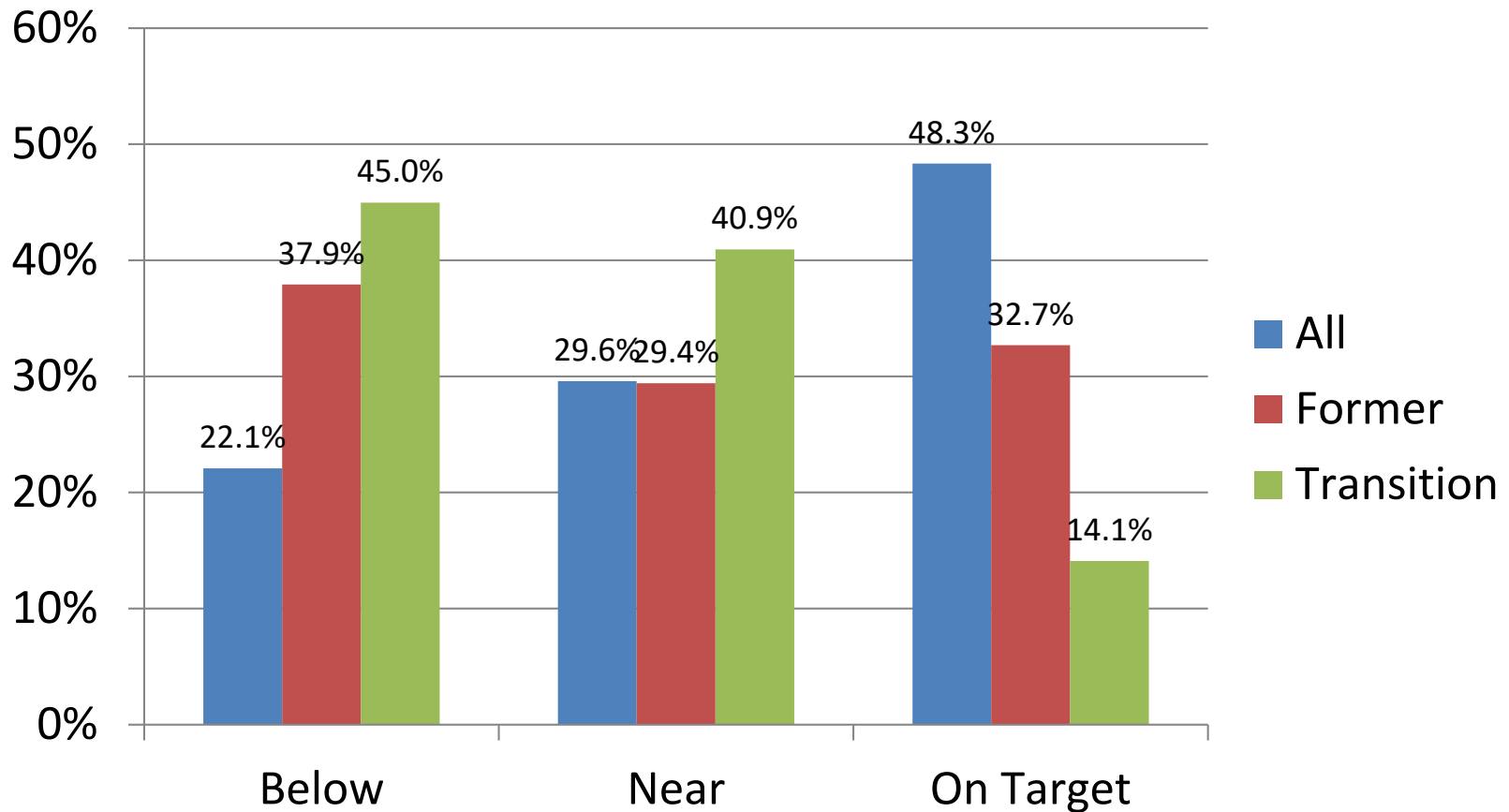
ELL Achievement

Reading



ELL Achievement

Math



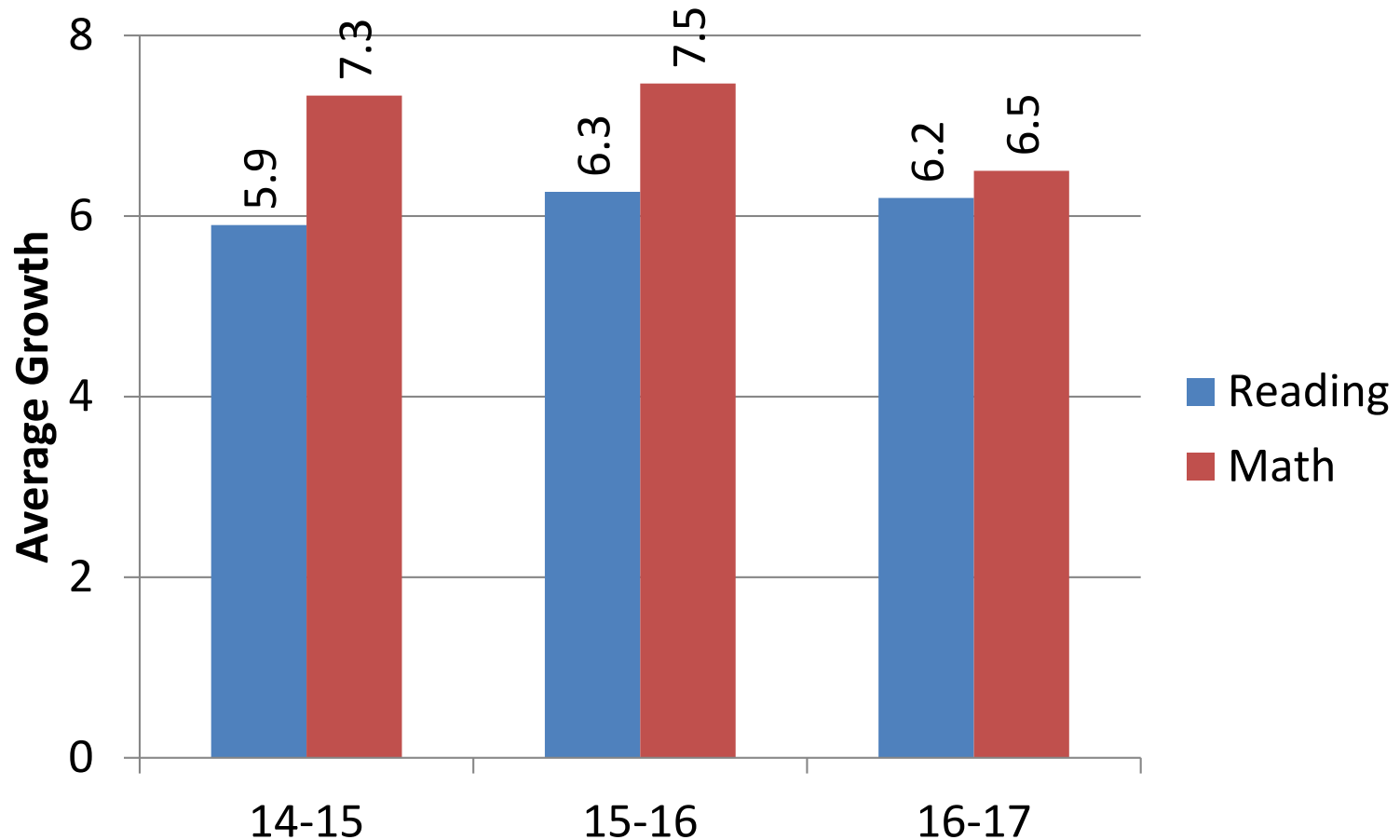
NWEA MAP Average Growth

Elementary and Middle Schools

The average growth shown by students at each level from fall to winter as measured by the NWEA MAP assessment.

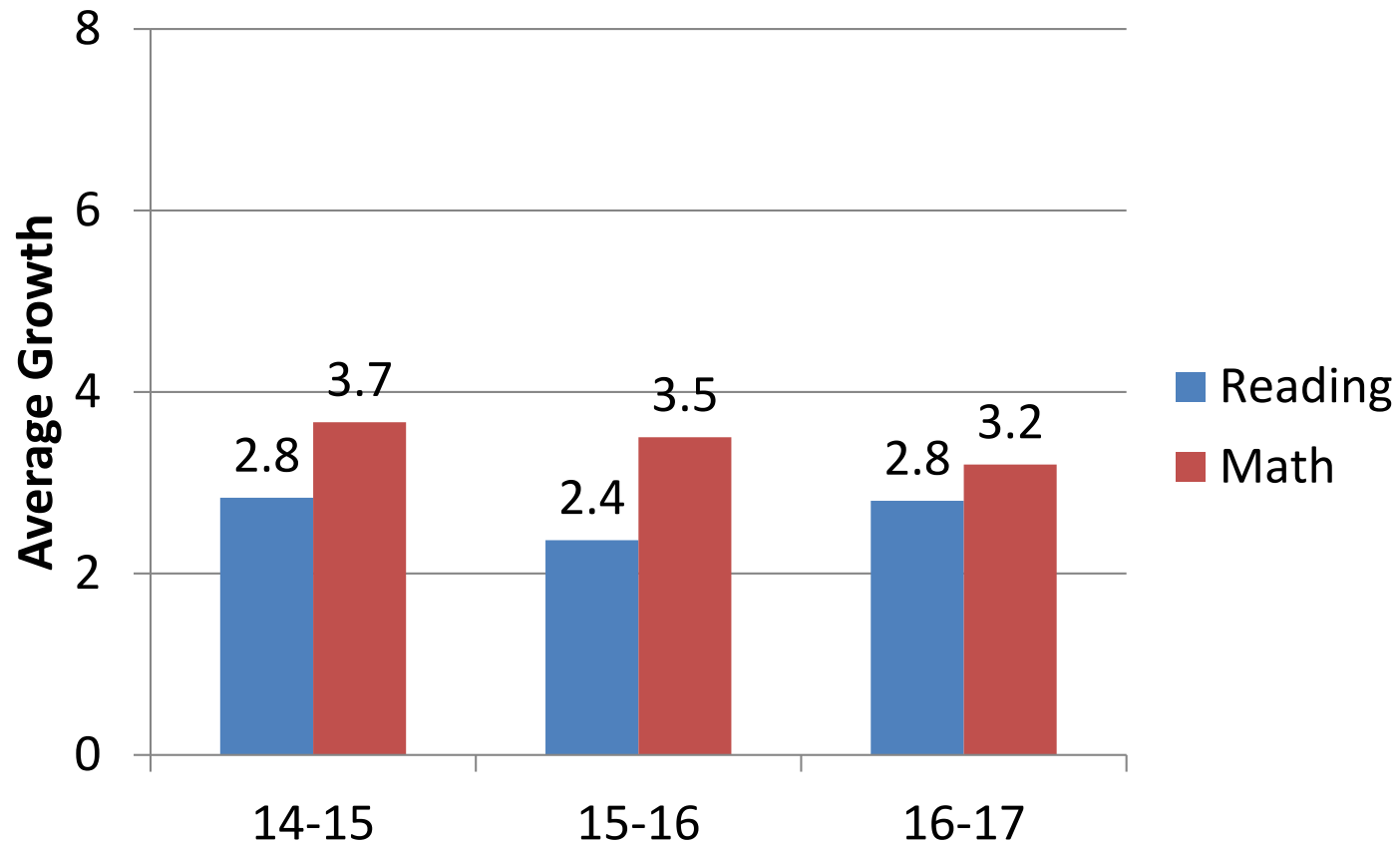
NWEA MAP Average Growth

Average MAP Growth - Elementary



NWEA MAP Average Growth

Average MAP Growth - Middle Schools



Potential Changes to Our KPIs

Additional DPIs will come online as data becomes available; may adjust others as well based on new research and data

- SAT/PSAT related measures
- Third Grade: Reading at Grade Level
- ELL Progress
- On Track for College and Career Readiness

District/School Report Cards

The state is required to post school and district report cards by October 30 each year.

We are required to present our report cards to the Board and post them online within 30 days of receiving them.

Implications for Instruction – Fountas & Pinnell in Grades K-5

Now that we have the data...

- Literacy Block
 - Using the data to group for guided reading
- Acceleration
 - Using the data to tailor instruction

During the Literacy Block K-5

- Determine individual student reading levels
 - Independent Level-Books chosen to read during workshop
 - Instructional Level-Books chosen to instruct during guided reading
 - Frustration Level-Books that are not yet appropriate to read
- Guided Reading
 - Literacy Continuum
 - Foundation for Setting School and/or District Goals
 - Link to State and National Standards
 - Helps Administrators and Teachers Achieve a Common Vision
 - Links Assessment to Instruction

A Road Map.....

“The best way to describe *The Literacy Continuum* is as a road map. It tells you what behaviors and understandings to look for during student observation. Your observations tell you where their literacy skills sit on the "map," which will lead you to the correct route to take for the next step in instruction.”

Credit: <http://blog.fountasandpinnell.com/post/october-twitter-chat-on-the-literacy-continuum>

Systems of Strategic Actions



These are the systems all readers use when processing text.

Each system is color coded and can be found throughout the Continuum.

Example of Literacy Continuum

- See board document handout

Acceleration in Grades K-5

- An extension of the core reading curriculum, not a stand alone program
- Use PLC time to analyze data
- Group students according to need
- Tie instruction during acceleration taught during the literacy block



Supporting Students in Grades 6-8

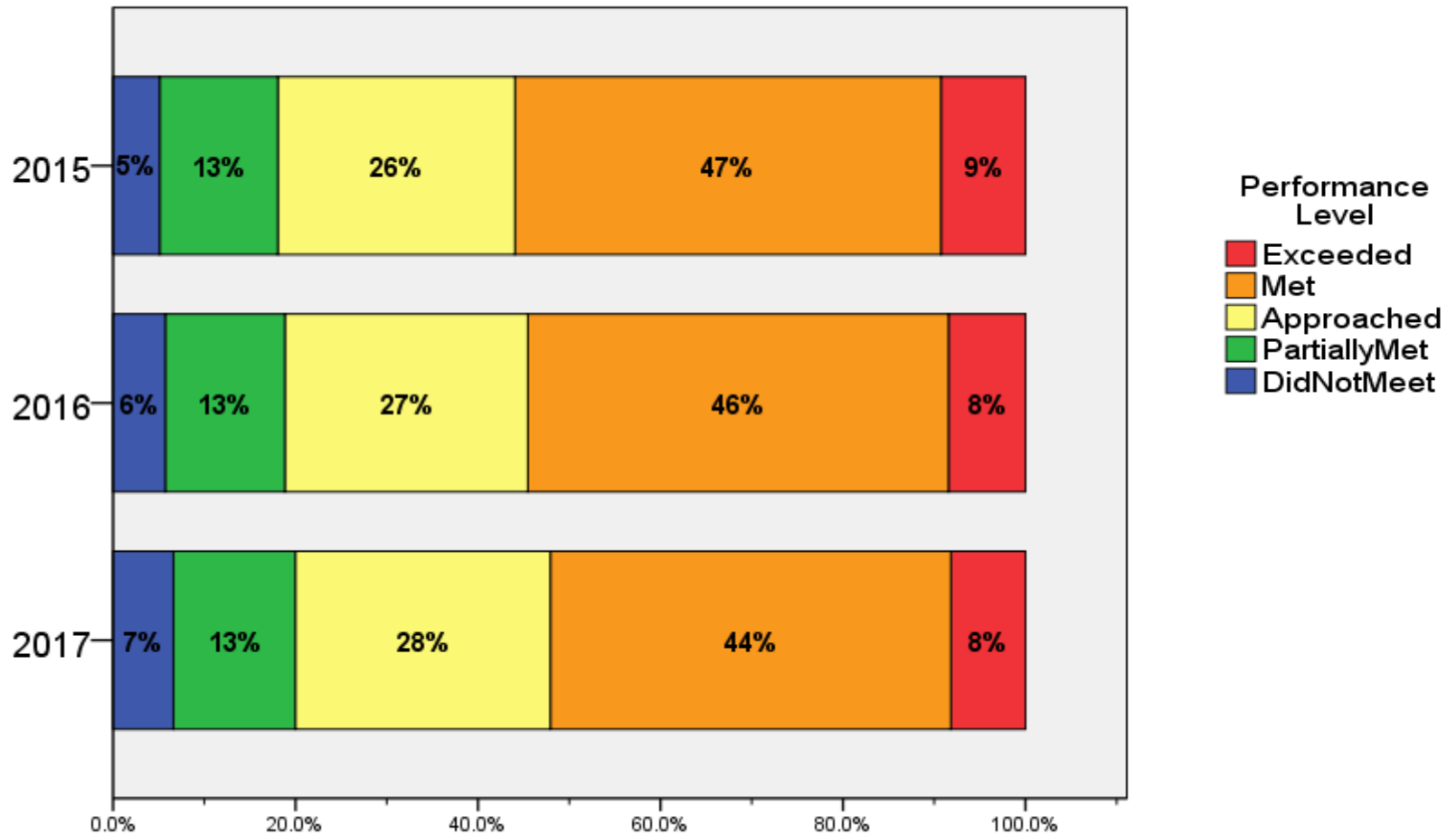
- Acceleration provides an opportunity for daily intervention in reading and math provided by content specialists
- Students who are below more than two grade levels in reading have a 40-minute reading strategies class in lieu of world language
- Students performing below grade level may also be placed in classes taught by both a content specialist and a reading specialist, EL teacher, or special education teacher

Supporting Students in Grades 9-12

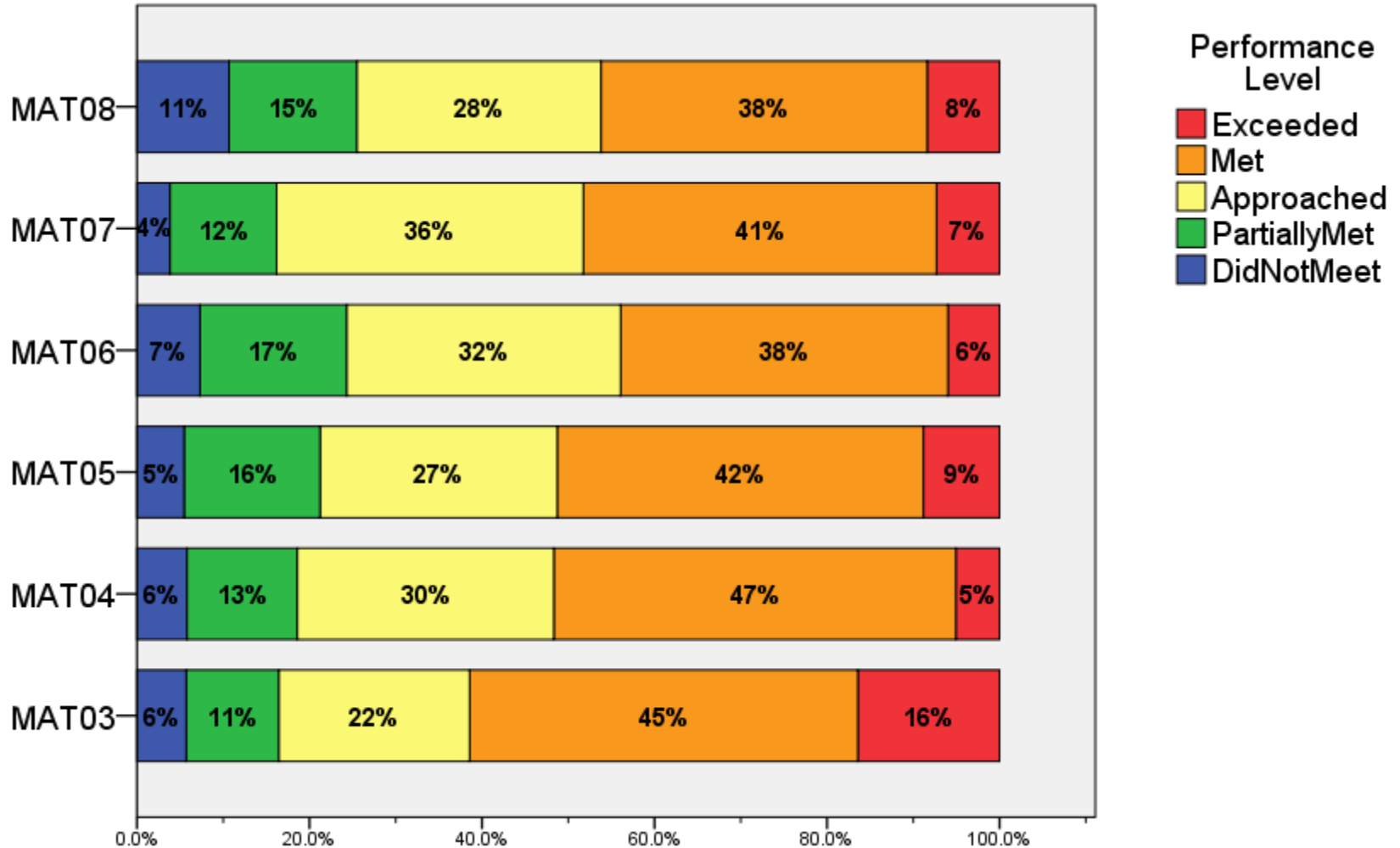
- Academic Literacy provides a reading support class
- Students may also be placed in co-taught classrooms
- The focus is on pushing students up through exposure and experience with grade level standards with support.

ADDITIONAL 2017 PARCC RESULTS

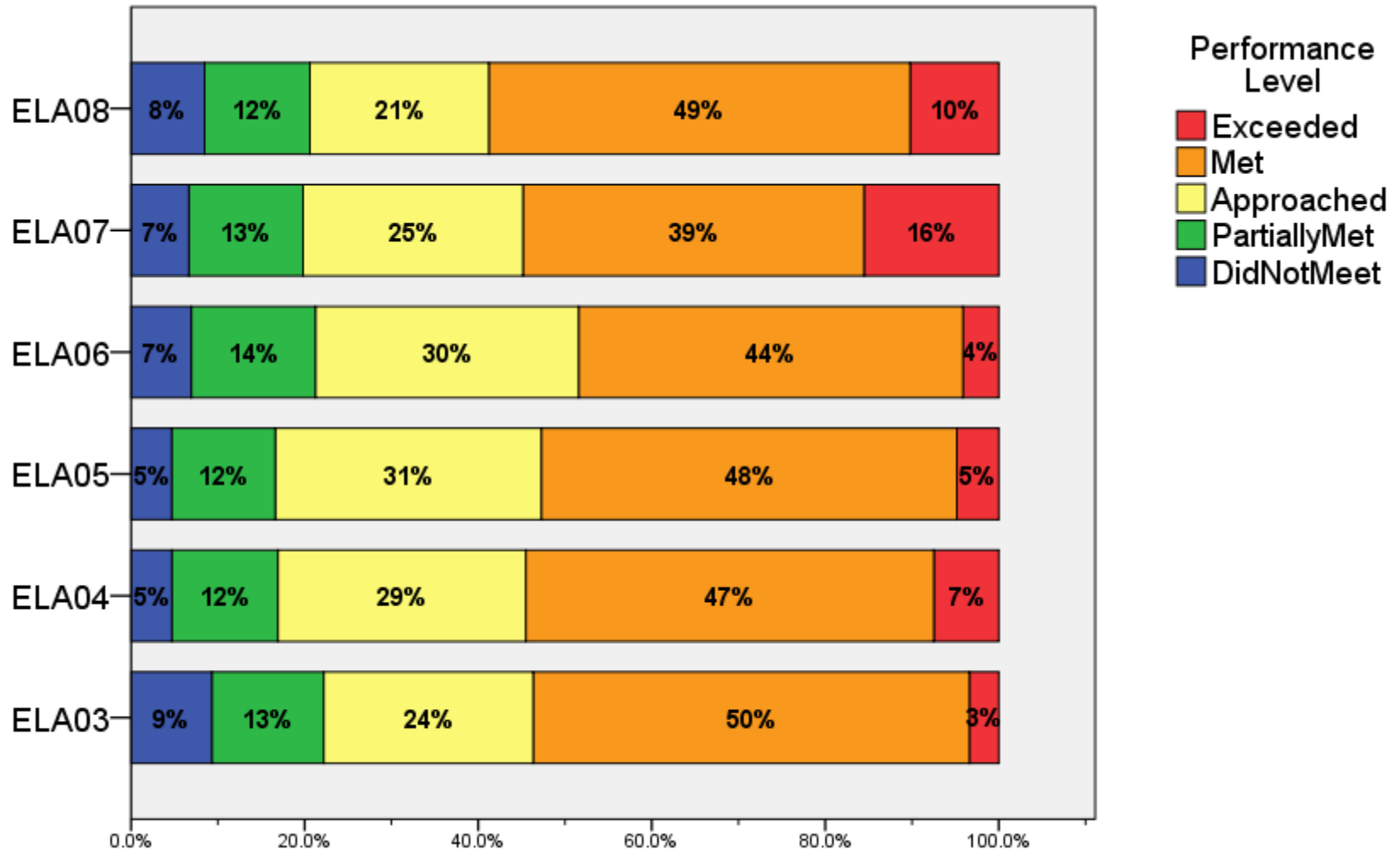
Performance Levels by Year



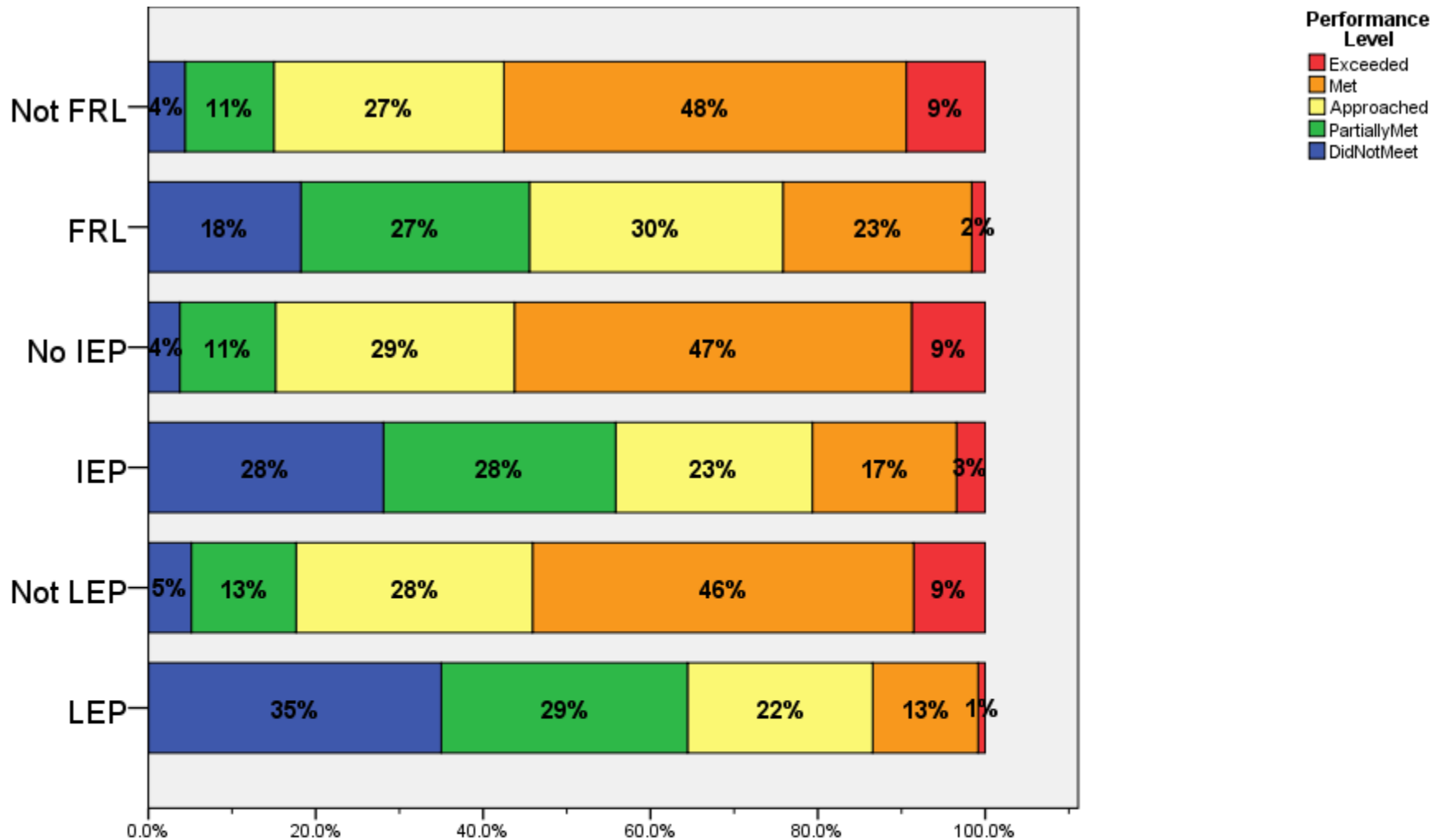
Performance Levels by Grade and Subject - Math



Performance Levels by Grade and Subject - ELA



Performance Levels by Subgroup



Performance Levels by Race/Ethnicity

