

# Snow Horse Stampede!

Phone 801-402-7350    <http://www.davis.k12.ut.us/162>

February 2019

**Thank You to our 2nd Grade Students  
and Teachers for a Wonderful Patriotic  
Program**



## Reading Week

There are many great reading based activities planned for this week. Thank you to our PTA!

Today we will have an assembly by award winning author, Matthew J. Kirby. There will be a school-wide readathon on Friday.

*\*Please see attached flyer for more information that includes a reading tracker and list of top books in 5 genres voted for by our students.*

## UPCOMING EVENTS:

### February 25th

Box Top Store during lunch

### February 25th-March 1

Reading Week

### February 26th

Box Top Store during lunch

### February 27th

5th Grade Field Trip—Utah Symphony

### March 5th

4th Grade Ski Field Trip Fitz/Green & Howe

6th Grade Snowshoe Field Trip

### March 6th

4th Grade Ski Field Trip Flinders/Merrill

6th Grade Snowshoe Field Trip

### March 8th

9:00 am 5th Grade Program for parents

### March 19th

PROFESSIONAL DAY—NO SCHOOL

### March 28th

1:00 Community Council

## LUNCH MENU

<https://davis.nutrislice.com/menu/snow-horse/lunch/2018-09-10>

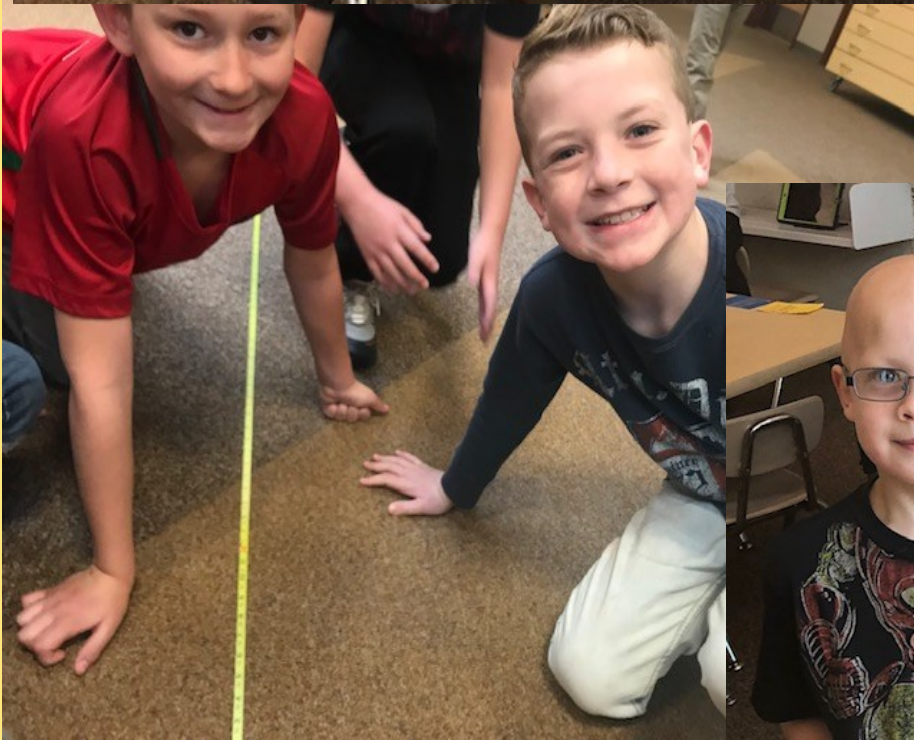
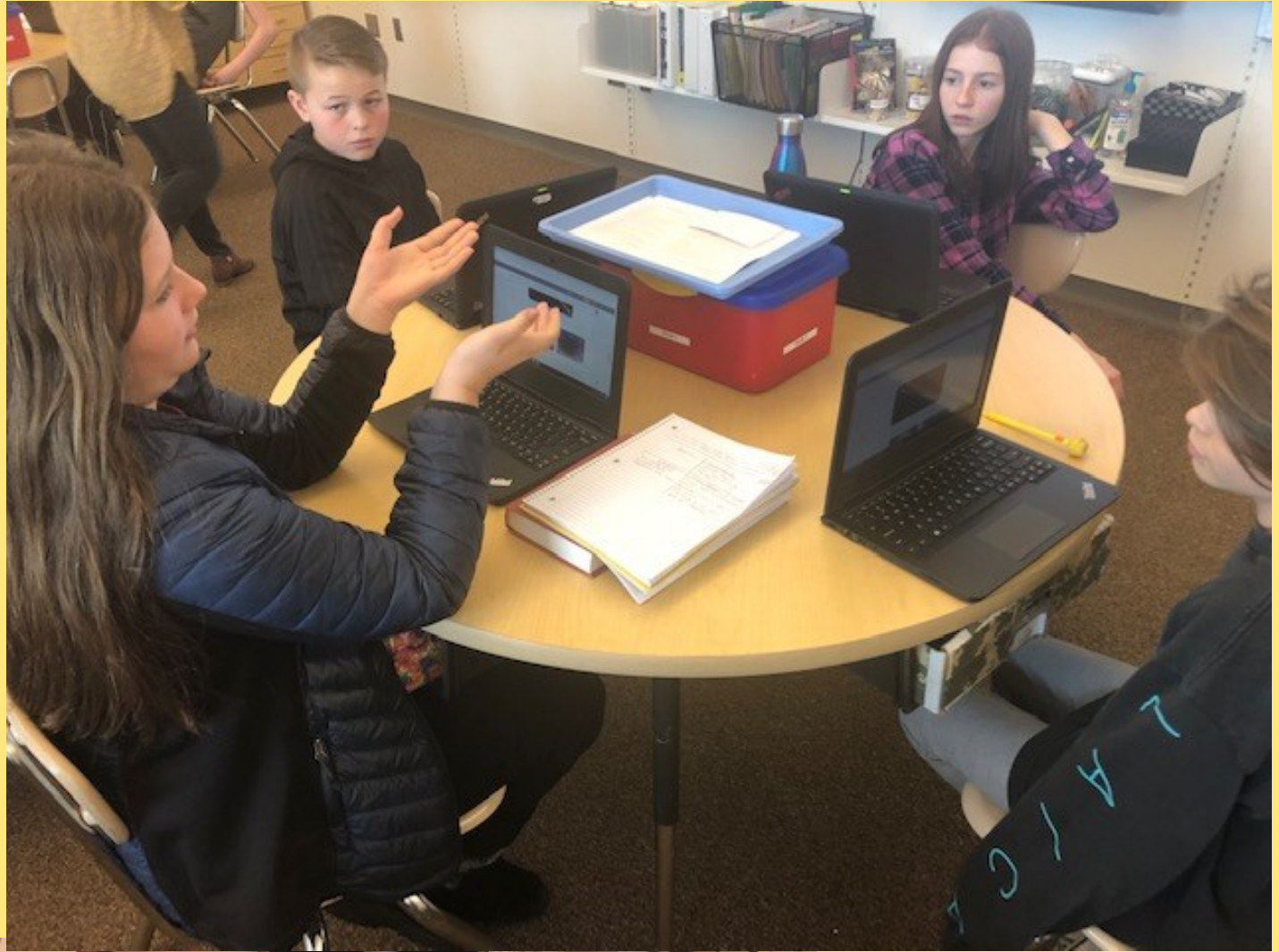
## Student Comment of The Week

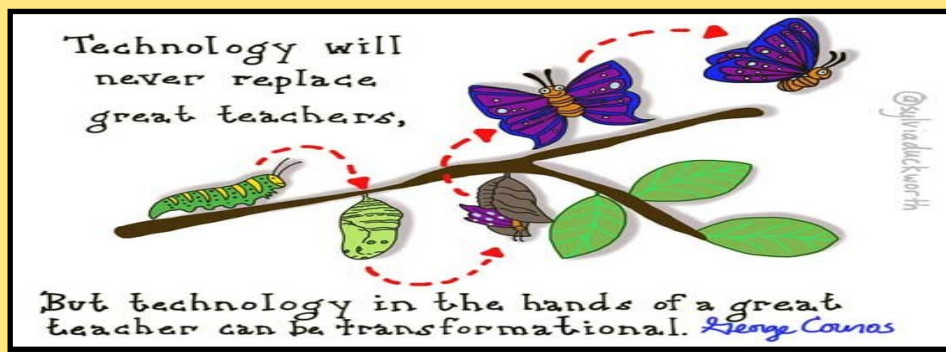
Last week, I had a meeting at another school before the day started. So, I was driving to Snow Horse the same time kids were walking to school. I saw two 6th Grade students walking in the street, so I rolled down my car window, called their names and told them to walk on the sidewalk. When I saw the two students later that day, they said “You’re everywhere. You could be an Elf On The Shelf with those powers.”











*Technology at Snow Horse is used to ENHANCE learning, not replace existing best practices that includes teacher instruction.*

**D - DELIBERATE:** Teachers carefully select the best digital resources to enhance and personalize student learning. They carefully plan how and when to insert technology into their instruction.

**R– REGULATED:** Teachers carefully regulate the amount of time students spend on a digital devices to ensure a balance with peer interaction and whole group instruction.

**I– INNOVATIVE:** Technology is creatively used to promote engagement and check for levels of understanding from ALL students. It provides teachers with immediate feedback regarding student understanding and progress. Among the others uses are—group problem solving and authentic writing practice. Mobile laptop labs provide writing practice that mirrors real-life writing.

**P– PERSONALIZED:** Quality adaptive software frees up teachers to target individual needs of students in a small group setting, while other students receive meaningful, personalized practice through adaptive software. Traditionally, all students worked on the same practice page at the same time and pace. Adaptive (personalized) software, when appropriate, replaces worksheet practice and offers immediate feedback to students and teachers.

### **Snow Horse Elementary Social Media Accounts**

We have new social media accounts this year that are designed to share reminders, great things happening in our school, as well as helpful articles on parenting and community resources. We would love to have you like and follow us! You can either click the social media buttons at the bottom of our school website, or get to our Snow Horse Elementary accounts with these links:

**Facebook:** <https://www.facebook.com/Snow-Horse-Elementary-School-2654121574813275/>

**Instagram:** <https://www.instagram.com/snowhorseelementary/>

**Twitter:** [http://twitter.com/school\\_snow](http://twitter.com/school_snow)

### **Drop-Off Pick Up Procedures Video**

Please take a moment to review this video on our school website. It's a quick instructional video on how to keep students safe and the flow of traffic moving during drop off/pick up times. Thank You!

<https://snowhorse.davis.k12.ut.us/>

## Change Your Words, Change your Mindset—Snow Horse Students Have a Growth Mindset.

School-wide we've been focusing on growth mindset. Here are some phrases that students hear at school and are also helpful to use at home.

Instead of "This is too hard." - "This may take some time and effort"

Instead of "I'm not good at this." - "What am I missing?"

Instead of "I'll never be as smart as her." - "I'm going to figure out what she does and try it."



Please help us raise money for Snow Horse Elementary by *attaching your Smith's Fresh Values Card to Snow Horse Elementary.*

1. Go To [www.smithsinspiringrewards.com](http://www.smithsinspiringrewards.com)
2. Click on "my account" In "account summary" click on "edit rewards" and input your rewards card number.
3. Click "Edit Community Rewards" (last selection on Account Summary) Enter the first letters of Snow Horse Elem. Select "Snow Horse Elementary" and click "enroll"





## TECH THE HALLS SPONSORS



Vitality Chiropractic  
Dr. Bryan Thompson D.C., M.S.



HAIR IN THE 801



AMY LAWRENCE  
PHOTOGRAPHY

