

REQUEST FOR QUOTATION	<b>TROY SCHOOL DISTRICT</b> 1140 RANKIN, TROY, MICHIGAN 48083 248-823-4052 FAX: 248-823-4077	REQUISITION
No. <b>9532</b>		
DUE DATE NO LATER THAN <b>6/10/08</b> 3 p.m.		DATE <b>5/27/08</b>

**REQUEST FOR QUOTE - NOT AN ORDER**

THIS FORM MUST BE UTILIZED WHEN RESPONDING TO THIS REQUEST  
 BID ENVELOPE ENCLOSED

**THE RFQ NUMBER MUST APPEAR ON ALL QUOTATIONS AND RELATED CORRESPONDENCE, THIS IS NOT AN ORDER**

Quantity	DESCRIPTION	UNIT PRICE	AMOUNT
	<p>Please supply us with your bid to furnish the Troy School District with <b>FURNITURE FOR GROW PROGRAM</b></p> <p style="text-align: center;">Copies of the bid are available at:  <a href="http://www.troy.k12.mi.us/purchasing/items_out_for_bid.htm">www.troy.k12.mi.us/purchasing/items_out_for_bid.htm</a></p> <p style="text-align: center;">Bid recaps will be available at:  <a href="http://troy.k12.mi.us/purchasing/index.htm">troy.k12.mi.us/purchasing/index.htm</a></p> <p style="text-align: center;"><u>FACSIMILE BID IS NOT ACCEPTABLE</u></p> <p>Bids will not be accepted if submitted after the deadline specified (local time) in the advertisement to bid or in the information to bidders. The late submission of a bid makes the bid nonrepsonsive and is a material defect which shall not be waived by the Board of Education. Delays in the mail will not be considered. All Late bids in the mail will be returned to the bidder unopened.</p> <p>Proposal for the submission of alternatives by vendors will be accepted and reviewed. However, if any substitution or departure is not clearly noted and described, it will be understood that the bid intends to exactly meet the specifications.</p> <p>The Board of Education shall be the sole judge as to whether the proposed goods are "equal" or "approved". Quotations must be mailed or delivered to the Purchasing Office, 1140 Rankin, Troy, MI 48083 no later than 3 p.m. on the date shown above. Michigan State Sales and Use Taxes and Federal Excise Taxes do not apply unless otherwise indicated. Exemption certificates will be furnished when necessary. This request imposes no obligations on the buyer. The Board of Education reserves the right to accept or reject any or all bids or to split awards by items or to accept bids, which will best serve the Board of Education.</p>		

**THIS AREA MUST BE FILLED IN**

DELIVERY TIME	PRICES FIRM FOR	NAME OF COMPANY	TELEPHONE NO.
TERMS		NO. & STREET	FAX #
FOB DELIVERED	ALL DELIVERY CHARGES MUST BE INCLUDED IN PRICES SHOWN	CITY, STATE & ZIP CODE	E-MAIL
CONTACT PERSON (PLEASE PRINT)		SIGNATURE	DATE



# TROY SCHOOL DISTRICT

## GROW Program Furniture

### BID 9532

The Troy School District is seeking qualified bids for the replacement of student furniture throughout the district. The following points are integral to this bid, respondents not adhering to these parameters are subject to disqualification.

- Bidding of complete package is **NOT** required. Bidders are encouraged to bid on all products, however, no penalty will occur should a vendor decide to submit a partial bid.
- All responses will be regarded as bid to specification unless **SPECIFICALLY** indicated on bid response. Any alternates being proposed **MUST** include complete cut sheet. Failure to include cut sheet with bid submission will be grounds for disqualification of entire bid.
- All bidders **MUST** complete the enclosed Familiar Disclosure form and include with bid submission. Bids not containing this form will be automatically disqualified. The Familiar Disclosure form is **NOT** required to be notarized for non-construction bids.
- Bidders are reminded that all furniture listed on this bid will require installation by the awarded vendor. Bids for items where vendor does not provide complete installation will be deemed incomplete and will be disqualified.
- Installation includes unloading from shipping vehicle, unpacking and placing into designated room. Any assembly is the sole responsibility of awarded vendor.
- School personnel will not assist with unloading, unpacking, assembly or cleanup of items or packaging materials.
- Awarded vendors are completely responsible for cleanup and removal of all packing materials. The school district will **NOT** provide dumpster space for packaging materials.
- School does not have loading docks, pallet lifts or forklifts. Bidders are specifically reminded that all unloading of purchased items is the sole responsibility of awarded vendor.
- Awarded vendors **MUST** coordinate with shipper to insure that all delivered products are installed **DAY OF DELIVERY**. The school does **NOT** have storage space available for product.
- Minimum of 48 hours notice is required prior to the delivery of any items awarded on this bid.
- All furniture must be complete, installed and ready to use in designated areas **NO LATER THAN FRIDAY, AUGUST 8, 2008**. Building will be open to accept deliveries from 7:30am – 2:30pm Monday through Friday.
- Bid prices are requested on a **PER UNIT BASIS**. Unit cost for delivery and installation are to be included on bid response. The district reserves the right to order additional quantities **PER BUILDING**. Bidders must specify the length of time they will hold pricing. The district will consider the timeline vendors will hold pricing when determining bid award.

Troy School District  
 Bid 9532 - GROW Program Furniture  
**ARTOPEX**

Item	Mfg	Qty	Part Number	Part Description	Category	Unit Price	Total
A-1	ART	2	TC-CO18183636CC-U (HPL) -SHO (REG) HO -G ~	Corner Tbl 90 , Rcsd E-Pnls Lft/Rgt, 18x18x36x36 H.P. Laminate Top Surface Honey Surface Finish Regular Edge Finish Honey Edge Finish Grey Base Finish Retain Grommet	WORKSURFACE	\$ _____	\$ _____
A-2	ART	2	TC-TW182436CL-U (HPL) -SHO (REG) HO -G ~	Dual-Dpt Tbl, Qck Chg R, Rcsd E-Pnl L/Full E-Pnl R, 18x24x36 H.P. Laminate Top Surface Honey Surface Finish Regular Edge Finish Honey Edge Finish Grey Base Finish Retain Grommet	WORKSURFACE	\$ _____	\$ _____
A-3	ART	1	TC-TW241836LC-U (HPL) -SHO (REG) HO -G ~	Dual-Dpt Tbl, Qck Chg L, Full E-Pnl L/Rcsd E-Pnl R, 24x18x36 H.P. Laminate Top Surface Honey Surface Finish Regular Edge Finish Honey Edge Finish Grey Base Finish Retain Grommet	WORKSURFACE	\$ _____	\$ _____
A-4	ART	4	TC-FPUUF -G -G -JB -L	FS Drawer Pedestal, Surface-Attached, 15.5x20x27.5 Grey Base Finish Grey Front Finish Curved Metal Pull, Black Finish Lock Option	PEDESTALS	\$ _____	\$ _____
A-5	ART	2	MP47-22-612-CA 2 (STD) 3064 K01	47 S MOBILE PEDESTAL CASTERS CUSHION SEAT Grade II MONTEROSI NE04 OPT: Standard Finish Charcoal keyed-alike 01	FILING	\$ _____	\$ _____
A-6	ART	4	TC-HWD36 (HPL) -SHO (REG) HO -G -G	Wall-Mount Hutch w/ Regular Doors, 36x14.5x16 H.P. Laminate Top Surface Honey Surface Finish Regular Edge Finish Honey Edge Finish Grey Base Finish Grey Front Finish	STORAGE	\$ _____	\$ _____

A-7	ART 8	Y5-SWB41 F	Wall Mount Bracket, 41" Charcoal	WORKSURFACE SUPPORT	\$ _____	\$ _____
A-8	ART 1	TC-TW211836LC (HPL) -SHO (REG) HO -G ~	Dual-Dpt Tbl, Qck Chg L, Full E-Pnl L/Rcsd E-Pnl R, 21x18x36 H.P. Laminate Top Surface Honey Surface Finish Regular Edge Finish Honey Edge Finish Grey Base Finish Retain Grommet	WORKSURFACE	\$ _____	\$ _____
A-9	ART 1	Y2-BT2072 2 ES36	Tackboard, 20x72 Grade 2 Fabric Essence Blue Nose ES36	ACCESSORY	\$ _____	\$ _____

Freight Charge to:  
**GROW Program**  
**1291 Torpey Dr.**  
**Troy, MI 48083**

\$ \_\_\_\_\_

Installation

\$ \_\_\_\_\_

TOTAL

\$ \_\_\_\_\_

Troy School District  
 Bid 9532 - GROW Program Furniture  
**HON**

Item	Mfg	Cat	Qty	Part Number	Part Description	Category	Unit Price	Total
H-1	HON	HSG	8	G41 .H .83 .Y	Task/Lab Stool,Shell,Pneu,Swivel,5-Star Base,Armls CASTER: Hard COLOR: Blue Violet 83 FRAME: Chrome	SEATING	\$	\$
H-2	HON	HSG	2	G21 .H .83 .Y	Teacher/Task Chair-Shell,Pneu,Swivel,Armless CASTER: Hard COLOR: Blue Violet 83 FRAME: Chrome	SEATING	\$	\$
H-3	HON	HSG	2	6213 .@ \$(3) .BR 90 .T	Low-Back,Dual Action,Lumbar,Pneu Synchro,Arms CASTER: (Standard) GRADE: III UPHOLSTERY UPH: Portfolio COLOR: Ink 90 FRAME: Black	SEATING	\$	\$
H-4	HON	HSG	9	5901 .@ \$(2) .BK 85 .T	Task, Swivel, Pneumatic CASTER: (Standard) GRADE: II UPHOLSTERY UPH: Classic COLOR: Blue FRAME: Black	SEATING	\$	\$
H-5	HON	HSG	1	4043 .T	Cart for Stacking 4041 Chairs (Black Only) FRAME: BLACK	SEATING	\$	\$
H-6	HON	HSG	25	G51 .83 .Y	Stack Chair-Shell,Steel Rod Frame, Armless,4/ctn COLOR: Blue Violet 83 FRAME: Chrome	SEATING	\$	\$
H-7	HON	HSG	3	G43 .H .83 .Y	Task/Lab Stool,Shell,Pneu,Swivel,5-Star Base,Arms CASTER: Hard COLOR: Blue Violet 83 FRAME: Chrome	SEATING	\$	\$
H-8	HON	HTA	1	5299	Table Truck, Black w/ Blue Bumper	FREESTANDING TABLE	\$	\$
H-9	HON	HTA	14	5283 .D .Q .Q	Half-Round Training Room Table 24D x 48W Lam: Natural Maple T-Mold: Light Gray Paint: Light Gray	FREESTANDING TABLE	\$	\$

H-10 HON HTA 12 5254  
.D  
.Q  
.Q

Rectangle Training Room Table, 24D x 60W  
Lam: Natural Maple  
T-Mold: Light Gray  
Paint: Light Gray

FREESTANDING TABLE

\$ \_\_\_\_\_

\$ \_\_\_\_\_

Freight Charge to:  
**GROW Program**  
**1291 Torpey Dr.**  
**Troy, MI 48083**

\$ \_\_\_\_\_

Installation

\$ \_\_\_\_\_

TOTAL

\$ \_\_\_\_\_

Troy School District  
 Bid 9532 - GROW Program Furniture  
**Trendway**

Item	Mfg	Qty	Part Number	Part Description	Category	Building	Unit Price	Total
T-1	TRW	1	TA2466A.S .1S .G1D .B48 .T2 .TL .1 .SA	FABRIC-COVERED ACOUSTICAL PANEL, 24W X 66H GRADE 1 SAME FABRIC ALL SIDES GRD 1 MOMENTUM MEANDER-ALL AGATE TAUPE TEXTURED TRIM COLORS TEXTURED LIGHT GRAY WILL MATCH TRIM COLOR STANDARD ACOUSTICS	PANEL	LIFE SKILLS	\$ _____	\$ _____
T-2	TRW	1	TA4866A.S .1S .G1D .B48 .T2 .TL .1 .SA	FABRIC-COVERED ACOUSTICAL PANEL, 48W X 66H GRADE 1 SAME FABRIC ALL SIDES GRD 1 MOMENTUM MEANDER-ALL AGATE TAUPE TEXTURED TRIM COLORS TEXTURED LIGHT GRAY WILL MATCH TRIM COLOR STANDARD ACOUSTICS	PANEL	LIFE SKILLS	\$ _____	\$ _____
T-3	TRW	1	AWSR66 .T2 .TL	ADJUSTABLE WALL STARTER RAIL, FITS PANEL HGT 66" TEXTURED TRIM COLORS TEXTURED LIGHT GRAY		LIFE SKILLS	\$ _____	\$ _____
T-4	TRW	1	ZSTWL6612 .B .T2 .TL .T	INT STEEL STORAGE TOWER W/ WARDROBE, LH, 6-6-12 PED BEVEL PULL TEXTURED TRIM COLORS TEXTURED LIGHT GRAY KEY-ALIKE (MUST ORDER ZLCK)	STORAGE	LIFE SKILLS	\$ _____	\$ _____
T-5	TRW	1	RTWS2448.GY .L .8 .J25 .1 .W2	WORK SURFACE, RECTANGULAR W/GROMMET 24D X 48W LIGHT GRAY WILSONART WOOD GRAIN LAMINATES WILSONART FUSION MAPLE VINYL EDGE CLEAR MAPLE	WORKSURFACE	LIFE SKILLS	\$ _____	\$ _____
T-6	TRW	2	ENP2429 .L	END PANEL WORK TOP, 24D X 29H LIGHT GRAY	WORKSURFACE SUPPORT	LIFE SKILLS	\$ _____	\$ _____



T-7	TRW	1	PNDC66A .G1D .B48 .L .1	90 DEGREE COVER, 66H (for TA Panels) GRD 1 MOMENTUM MEANDER AGATE TAUPE LIGHT GRAY WILL MATCH TRIM COLOR		LIFE SKILLS	\$	\$
T-8	TRW	1	FSU48 .PF .T2 .TL .AN .QN .IN	FLIPPER DOOR STORAGE UNIT, 48W PAINT FINISH FRONT TEXTURED TRIM COLORS TEXTURED LIGHT GRAY NO ACCENT STRIP NO QUARTERBACK INTRINSIC (MUST ORDER ZLCK)	STORAGE	LIFE SKILLS	\$	\$
T-9	TRW	1	ZLAT436 .B .T2 .TL .T	INT STEEL LATERAL FILE 4-DRAWER, 36W BEVEL PULL TEXTURED TRIM COLORS TEXTURED LIGHT GRAY KEY-ALIKE (MUST ORDER ZLCK)	FILING	LIFE SKILLS	\$	\$
T-10	TRW	1	TA6066A.S .1S .G1D .B48 .T2 .TL .1 .SA	FABRIC-COVERED ACOUSTICAL PANEL, 60W X 66H GRADE 1 SAME FABRIC ALL SIDES GRD 1 MOMENTUM MEANDER-ALL AGATE TAUPE TEXTURED TRIM COLORS TEXTURED LIGHT GRAY WILL MATCH TRIM COLOR STANDARD ACOUSTICS	PANEL	LIFE SKILLS	\$	\$
T-11	TRW	1	WSR14 .L	WALL STARTER RAIL, 85" HIGH LIGHT GRAY	PANEL		\$	\$
T-12	TRW	4	FR3014 .T2 .TL .1	SYSTEMS FRAME, 85H X 30W TEXTURED TRIM COLORS TEXTURED LIGHT GRAY TRIM IS MATCHED UNLESS GO WOOD	PANEL		\$	\$
T-13	TRW	4	PDT3001B .T2 .TL	POWER DATA TILE W/ BRACKET, 30W X 6H TEXTURED TRIM COLORS TEXTURED LIGHT GRAY	TILE		\$	\$
T-14	TRW	4	PDT3001 .T2 .TL	POWER DATA TILE, 30W X 6H TEXTURED TRIM COLORS TEXTURED LIGHT GRAY	TILE		\$	\$
T-15	TRW	4	CST3005 .G1D .B48	SMART TILE, 30W X 30H GRD 1 MOMENTUM MEANDER AGATE TAUPE	PANEL		\$	\$

T-16	TRW	4	CST3005 .G1D .B48	SMART TILE, 30W X 30H GRD 1 MOMENTUM MEANDER AGATE TAUPE	PANEL	\$ _____	\$ _____
T-17	TRW	4	AT3004 .G1D .B48	ACOUSTICAL TILE, 30W X 24H GRD 1 MOMENTUM MEANDER AGATE TAUPE	TILE	\$ _____	\$ _____
T-18	TRW	4	AT3004 .G1D .B48	ACOUSTICAL TILE, 30W X 24H GRD 1 MOMENTUM MEANDER AGATE TAUPE	TILE	\$ _____	\$ _____
T-19	TRW	4	AT3004 .G1D .B48	ACOUSTICAL TILE, 30W X 24H GRD 1 MOMENTUM MEANDER AGATE TAUPE	TILE	\$ _____	\$ _____
T-20	TRW	4	AT3004 .G1D .B48	ACOUSTICAL TILE, 30W X 24H GRD 1 MOMENTUM MEANDER AGATE TAUPE	TILE	\$ _____	\$ _____
T-21	TRW	1	RTWS2460.GY .L .8 .J25 .1 .W2	WORK SURFACE, RECTANGULAR W/GROMMET 24D X 60W LIGHT GRAY WILSONART WOOD GRAIN LAMINATES WILSONART FUSION MAPLE VINYL EDGE CLEAR MAPLE	WORKSURFACE	\$ _____	\$ _____
T-22	TRW	5	WSBKP	WORK SURFACE SUPPORT BRACKET, PAIR	WORKSURFACE SUPPORT	\$ _____	\$ _____
T-23	TRW	6	FR2414 .T2 .TL .1	SYSTEMS FRAME, 85H X 24W TEXTURED TRIM COLORS TEXTURED LIGHT GRAY TRIM IS MATCHED UNLESS GO WOOD	PANEL	\$ _____	\$ _____
T-24	TRW	6	PDT2401B .T2 .TL	POWER DATA TILE W/ BRACKET, 24W X 6H TEXTURED TRIM COLORS TEXTURED LIGHT GRAY	TILE	\$ _____	\$ _____
T-25	TRW	6	PDT2401 .T2 .TL	POWER DATA TILE, 24W X 6H TEXTURED TRIM COLORS TEXTURED LIGHT GRAY	TILE	\$ _____	\$ _____
T-26	TRW	6	CST2405 .G1D .B48	SMART TILE, 24W X 30H GRD 1 MOMENTUM MEANDER AGATE TAUPE	PANEL	\$ _____	\$ _____
T-27	TRW	6	CST2405 .G1D .B48	SMART TILE, 24W X 30H GRD 1 MOMENTUM MEANDER AGATE TAUPE	PANEL	\$ _____	\$ _____

T-28	TRW	6	AT2404 .G1D .B48	ACOUSTICAL TILE, 24W X 24H GRD 1 MOMENTUM MEANDER AGATE TAUPE	TILE	\$ _____	\$ _____
T-29	TRW	6	AT2404 .G1D .B48	ACOUSTICAL TILE, 24W X 24H GRD 1 MOMENTUM MEANDER AGATE TAUPE	TILE	\$ _____	\$ _____
T-30	TRW	6	AT2404 .G1D .B48	ACOUSTICAL TILE, 24W X 24H GRD 1 MOMENTUM MEANDER AGATE TAUPE	TILE	\$ _____	\$ _____
T-31	TRW	6	AT2404 .G1D .B48	ACOUSTICAL TILE, 24W X 24H GRD 1 MOMENTUM MEANDER AGATE TAUPE	TILE	\$ _____	\$ _____
T-32	TRW	2	WSSL .L	WORKTOP SUPPORT LEFT LIGHT GRAY	WORKSURFACE SUPPORT	\$ _____	\$ _____
T-33	TRW	11	RTWS3048.GY .L .8 .J25 .1 .W2	WORK SURFACE, RECTANGULAR W/GROMMET 30D X 48W LIGHT GRAY WILSONART WOOD GRAIN LAMINATES WILSONART FUSION MAPLE VINYL EDGE CLEAR MAPLE	WORKSURFACE	\$ _____	\$ _____
T-34	TRW	5	PPC20	CONTRADA POWERPAC CONNECTOR FOR BLK TO BLK BOND 20W	ELECTRICAL	\$ _____	\$ _____
T-35	TRW	4	PPB30	POWERPAC BLOCK, MAX 4-20AMP CIRCS/4 DPLX RCPTS, 30W	ELECTRICAL	\$ _____	\$ _____
T-36	TRW	1	CBFP	BASE FEED, 20-AMP PLUG, CIRCUIT-1 DUPLEX ONLY	ELECTRICAL	\$ _____	\$ _____
T-37	TRW	2	FR4814 .T2 .TL .1	SYSTEMS FRAME, 85H X 48W TEXTURED TRIM COLORS TEXTURED LIGHT GRAY TRIM IS MATCHED UNLESS GO WOOD	PANEL	\$ _____	\$ _____
T-38	TRW	2	PDT4801B .T2 .TL	POWER DATA TILE W/ BRACKET, 48W X 6H TEXTURED TRIM COLORS TEXTURED LIGHT GRAY	TILE	\$ _____	\$ _____
T-39	TRW	2	PDT4801 .T2 .TL	POWER DATA TILE, 48W X 6H TEXTURED TRIM COLORS TEXTURED LIGHT GRAY	TILE	\$ _____	\$ _____
T-40	TRW	2	CST4805 .G1D .B48	SMART TILE, 48W X 30H GRD 1 MOMENTUM MEANDER AGATE TAUPE	PANEL	\$ _____	\$ _____
T-41	TRW	2	CST4805 .G1D .B48	SMART TILE, 48W X 30H GRD 1 MOMENTUM MEANDER AGATE TAUPE	PANEL	\$ _____	\$ _____

T-42	TRW	2	AT4804 .G1D .B48	ACOUSTICAL TILE, 48W X 24H GRD 1 MOMENTUM MEANDER AGATE TAUPE	TILE	\$ _____	\$ _____
T-43	TRW	2	AT4804 .G1D .B48	ACOUSTICAL TILE, 48W X 24H GRD 1 MOMENTUM MEANDER AGATE TAUPE	TILE	\$ _____	\$ _____
T-44	TRW	2	AT4804 .G1D .B48	ACOUSTICAL TILE, 48W X 24H GRD 1 MOMENTUM MEANDER AGATE TAUPE	TILE	\$ _____	\$ _____
T-45	TRW	2	AT4804 .G1D .B48	ACOUSTICAL TILE, 48W X 24H GRD 1 MOMENTUM MEANDER AGATE TAUPE	TILE	\$ _____	\$ _____
T-46	TRW	1	RTWS-SPECIAL .GY .L .8 .J25 .1 .W2 .24 .51	SPECIAL 5/8" GAP WORKSURFACE GROMMET LIGHT GRAY WILSONART WOOD GRAIN LAMINATES WILSONART FUSION MAPLE VINYL EDGE CLEAR MAPLE 24" DEEP 51" WIDE		\$ _____	\$ _____
T-47	TRW	3	RTWS2448.GY .L .8 .J25 .1 .W2	WORK SURFACE, RECTANGULAR W/GROMMET 24D X 48W LIGHT GRAY WILSONART WOOD GRAIN LAMINATES WILSONART FUSION MAPLE VINYL EDGE CLEAR MAPLE	WORKSURFACE	\$ _____	\$ _____
T-48	TRW	2	PPB48	POWERPAC BLOCK, MAX 4-20AMP CIRS/4 DPLX RCPTS, 48W	ELECTRICAL WORKSURFACE SUPPORT	\$ _____	\$ _____
T-49	TRW	1	WSCSR .L	WORK SURFACE SUPPORT CANTILEVER-SHARED RIGHT LIGHT GRAY		\$ _____	\$ _____
T-50	TRW	4	WSCR .L	WORK SURFACE SUPPORT CANTILEVER-RIGHT LIGHT GRAY	WORKSURFACE SUPPORT	\$ _____	\$ _____
T-51	TRW	1	ZDD236 .B .T2 .TL .T	INT STEEL DOUBLE-DOOR STORAGE CABINET 236, 1 SHELF BEVEL PULL TEXTURED TRIM COLORS TEXTURED LIGHT GRAY KEY-ALIKE (MUST ORDER ZLCK)	FILING	\$ _____	\$ _____

T-52	TRW 3	WSCL .L	WORK SURFACE SUPPORT CANTILEVER-LEFT LIGHT GRAY	WORKSURFACE SUPPORT	\$	\$
T-53	TRW 9	TA4848A.S .1S .G1D .B48 .T2 .TL .1 .SA	FABRIC-COVERED ACOUSTICAL PANEL, 48W X 48H GRADE 1 SAME FABRIC ALL SIDES GRD 1 MOMENTUM MEANDER-ALL AGATE TAUPE TEXTURED TRIM COLORS TEXTURED LIGHT GRAY WILL MATCH TRIM COLOR STANDARD ACOUSTICS	PANEL	\$	\$
T-54	TRW 1	WSSR .L	WORKTOP SUPPORT RIGHT LIGHT GRAY	WORKSURFACE SUPPORT	\$	\$
T-55	TRW 9	WSSRS .L	WORKTOP SUPPORT SHARED, RIGHT HAND LIGHT GRAY	WORKSURFACE SUPPORT	\$	\$
T-56	TRW 4	TA3048A.S .1S .G1D .B48 .T2 .TL .1 .SA	FABRIC-COVERED ACOUSTICAL PANEL, 30W X 48H GRADE 1 SAME FABRIC ALL SIDES GRD 1 MOMENTUM MEANDER-ALL AGATE TAUPE TEXTURED TRIM COLORS TEXTURED LIGHT GRAY WILL MATCH TRIM COLOR STANDARD ACOUSTICS	PANEL	\$	\$
T-57	TRW 1	AWSR48 .T2 .TL	ADJUSTABLE WALL STARTER RAIL, FITS PANEL HGT 48" TEXTURED TRIM COLORS TEXTURED LIGHT GRAY		\$	\$
T-58	TRW 1	4WCK14 .1 .L	4-WAY CONNECTOR KIT, 85H PAINTED CORNER CAP LIGHT GRAY	PANEL	\$	\$
T-59	TRW 3	3WCK14 .T2 .TL .1	3-WAY CONNECTOR KIT, 85H TEXTURED TRIM COLORS TEXTURED LIGHT GRAY TRIM IS MATCHED UNLESS GO WOOD	PANEL	\$	\$
T-60	TRW 6	PEC14 .1 .L	PANEL END COVER, 85" HIGH PAINTED END COVER LIGHT GRAY	PANEL	\$	\$

T-61	TRW 1	CWS3048.C.GY	CORNER WORK SURFACE, CURVED FRONT WITH GROMMET 30D X 48W	WORKSURFACE	\$	\$
		.L	LIGHT GRAY			
		.8	WILSONART WOOD GRAIN LAMINATES			
		.J25	WILSONART FUSION MAPLE			
		.1	VINYL EDGE			
		.W2	CLEAR MAPLE			
T-62	TRW 1	WSBKR	WORK SURFACE SUPPORT BRACKET, RIGHT HAND	WORKSURFACE	\$	\$
T-63	TRW 1	PTWC48A	THREE-WAY COVER, 48H (for TA Panels)	SUPPORT	\$	\$
		.G1D	GRD 1 MOMENTUM MEANDER			
		.B48	AGATE TAUPE			
		.L	LIGHT GRAY			
		.1	WILL MATCH TRIM COLOR			
T-64	TRW 3	PNDC48A	90 DEGREE COVER, 48H (for TA Panels)		\$	\$
		.G1D	GRD 1 MOMENTUM MEANDER			
		.B48	AGATE TAUPE			
		.L	LIGHT GRAY			
		.1	WILL MATCH TRIM COLOR			
T-65	TRW 3	LFS536	LATERAL FILE W/ STORAGE CABINET, 36W, 64H	FILING	\$	\$
		.T2	TEXTURED TRIM COLORS			
		.TL	TEXTURED LIGHT GRAY			
		.L	LIGHT GRAY (SMOOTH)			

Freight Charge to:  
**GROW Program**  
**1291 Torpey Dr.**  
**Troy, MI 48083**

Installation

TOTAL

\$ \_\_\_\_\_

\$ \_\_\_\_\_

\$ \_\_\_\_\_

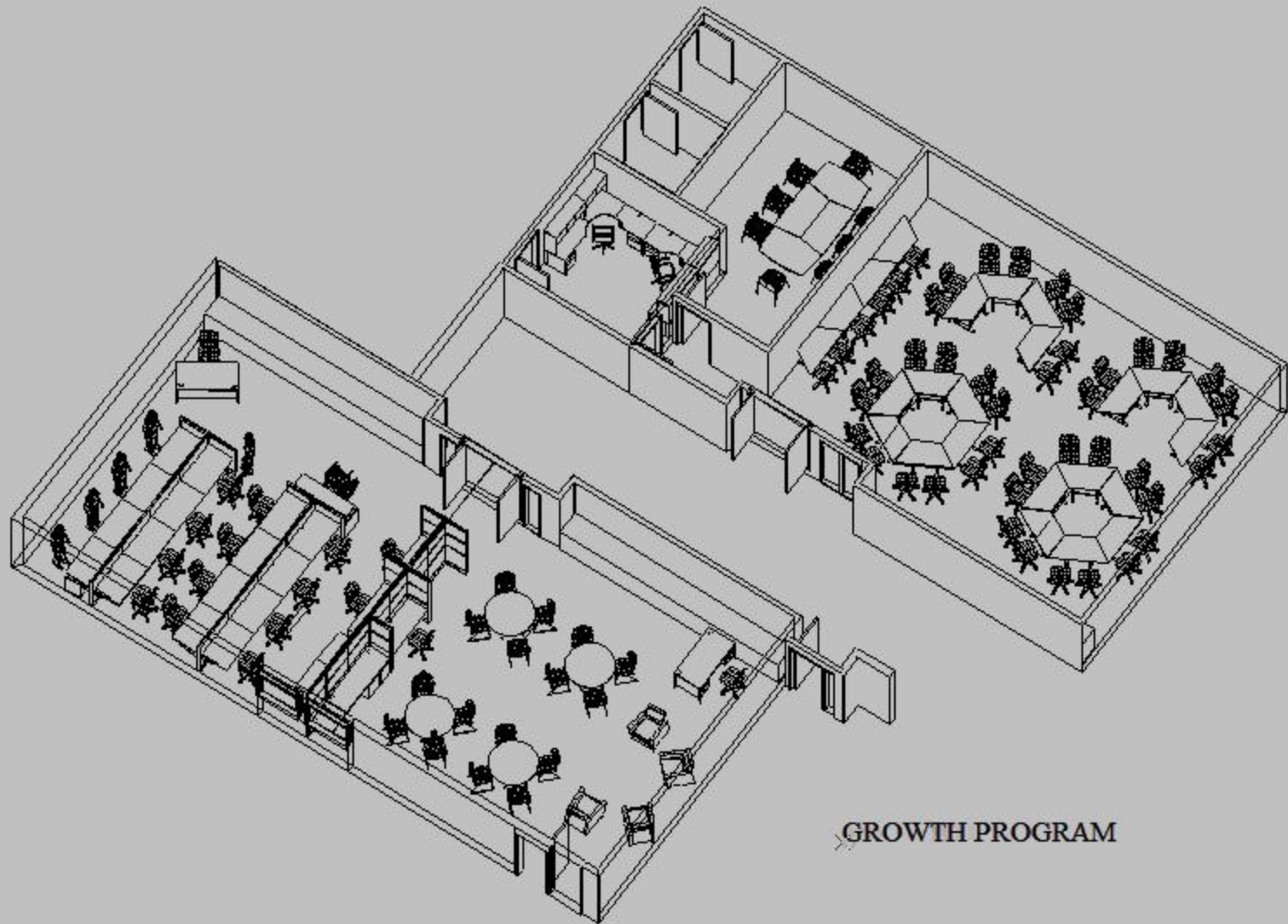
<p>Troy School District          Bid 9532 - GROW Program Furniture  <b>Miscellaneous</b></p>
--

Item	Qty	Mfg	Part Number	Part Description	Unit Price	Total
M-1	1	GHENT	2010-5	60W X 40H X 20D MERCHANDISER DISPLAY CASE ALUM/LIGHT OAK	\$ _____	\$ _____
M-2	4	COMMUNITY	EN920IT-R	ARMLESS CHAIR W/ RIGHT TABLET FABRIC: BEE04/INDIGO	\$ _____	\$ _____
M-3	1	ROYAL	3722	FIRST AID COUCH / NAVY	\$ _____	\$ _____
M-4	1	COMMUNITY	EN9710	OTTOMAN - GRADE D	\$ _____	\$ _____
M-5	1	Montisa	IP150	Standard full size divided mail file	\$ _____	\$ _____

Freight Charge to:  
**GROW Program**  
**1291 Torpey Dr.**  
**Troy, MI 48083**

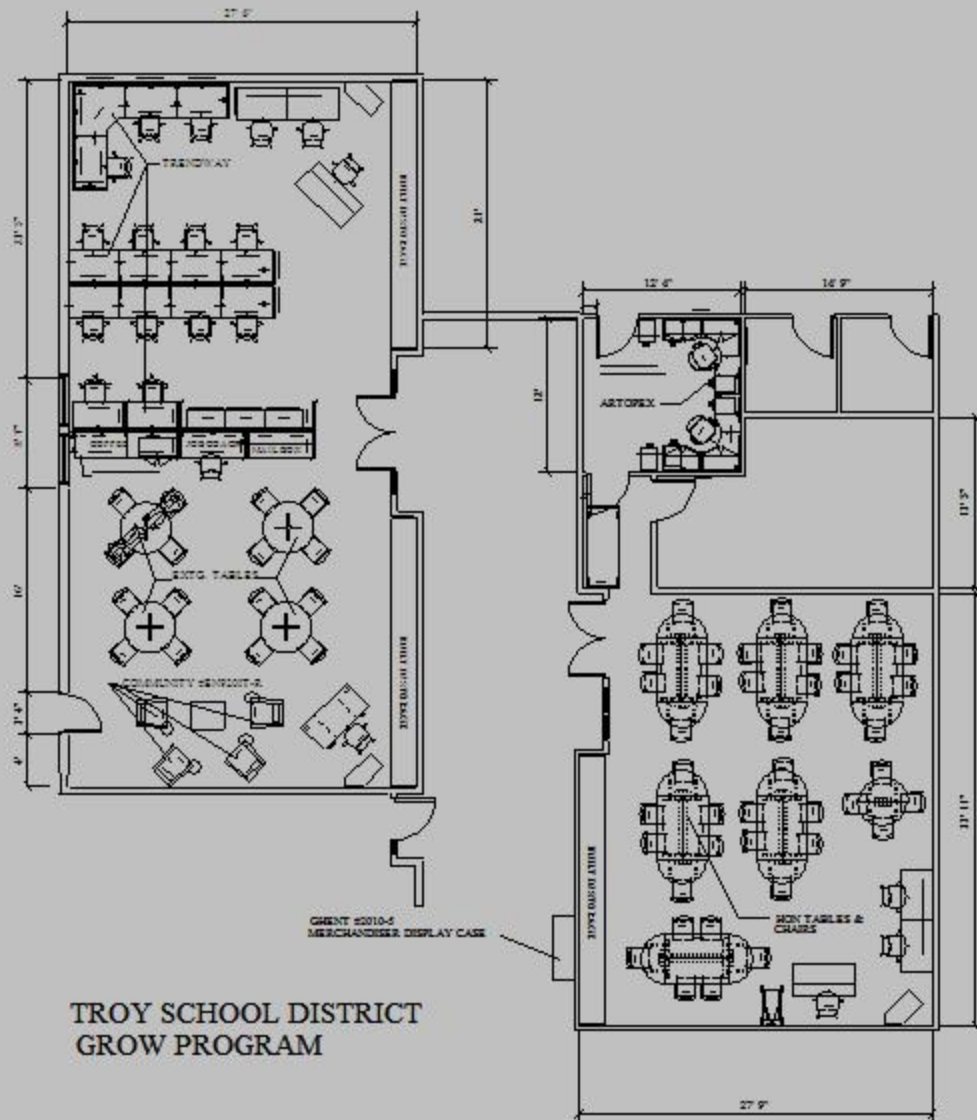
Installation \$ \_\_\_\_\_

**TOTAL** **\$ \_\_\_\_\_**

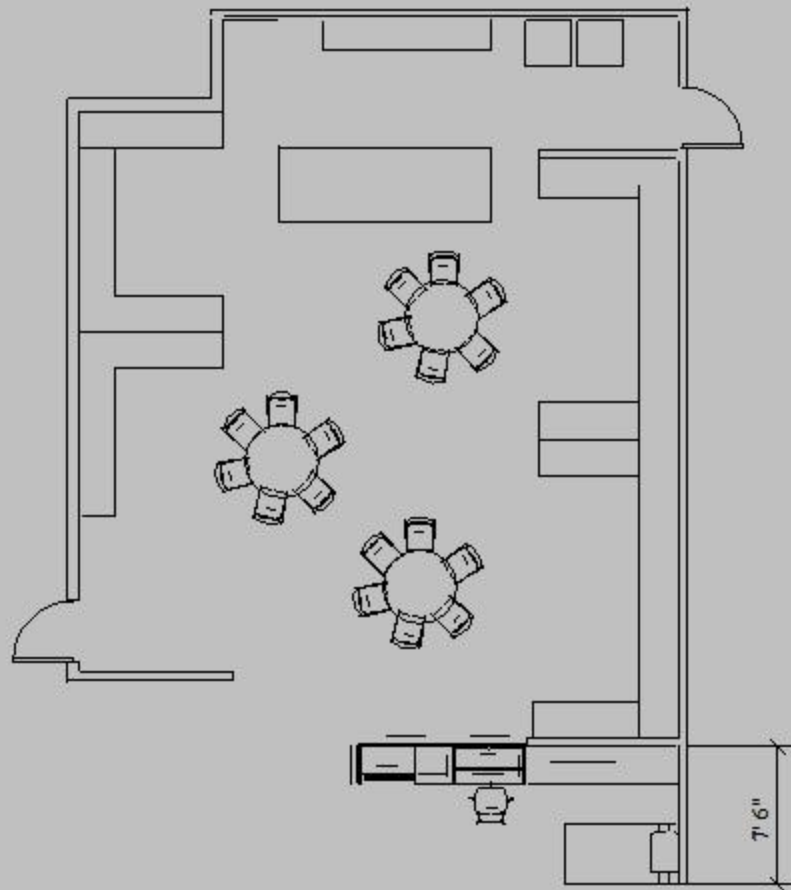


GROWTH PROGRAM





**TROY SCHOOL DISTRICT  
GROW PROGRAM**



TROY SCHOOL DISTRICT  
LIFE SKILLS ROOM

Troy School District											
GROW Program Furniture											
Bid 9532											
		Great Lakes Furn Supply Inc.		School Specialty		Learning Consultants			Corporate Express		
Qty	Description	Unit	Total	Unit	Total	Alt.	Unit	Total	Alt.	Unit	Total
	<b>Artopex</b>										
2	Corner Tble		no bid		no bid	Abco			Hon	408.70	817.40
2	Dual-Dpt Tbl Chg R		no bid		no bid	Abco			Hon	156.57	313.14
1	Dual-Dpt Tbl Chg L		no bid		no bid	Abco			Hon	156.57	156.57
4	FS Drawer Pedestal		no bid		no bid	Abco			Hon	157.24	628.96
2	Mobile Pedestal Casters		no bid		no bid	Abco			Hon	123.02	246.04
4	Wall-Mount Hutch		no bid		no bid	Abco			Hon	132.51	530.04
8	Wall Mount Bracket		no bid		no bid	Abco			Hon		Inc.
1	Dual-Dpt Tbl Chg L		no bid		no bid	Abco			Hon	184.69	184.69
1	Tackboard		no bid		no bid	Abco			Hon	37.62	37.62
	Freight		no bid		no bid	Abco					-
	Installation		no bid		no bid	Abco					200.00
	<b>ARTOPEX TOTAL</b>		<b>no bid</b>		<b>no bid</b>	Abco		<b>4,079.46</b>			<b>3,114.46</b>
	<b>HON</b>										
8	Task/lab Stool, armless		no bid	127.08	1,016.64		134.60	1,076.80		121.33	970.64
2	Teacher/Task Chair, armles		no bid	100.03	200.06		105.89	211.78		239.56	479.12
2	Low-Back Dual Action		no bid	298.10	596.20		319.53	639.06		284.10	568.20
9	Task, Swivel		no bid	76.38	687.42		81.42	732.78		72.00	648.00
1	Cart for Stacking chairs		no bid	151.18	151.18		164.71	164.71		143.56	143.56
25	Stack chair, armless		no bid	226.68	5,667.00		240.95	6,023.75		215.99	5,399.75
3	Task/lab Stool w/arms		no bid	370.89	1,112.67		153.89	461.67		137.96	413.88
1	Table Truck		no bid	626.40	626.40		674.83	674.83		597.09	597.09
14	Half-Round Table		no bid	232.41	3,253.74		249.42	3,491.88		220.73	3,090.22
12	Rectangle Table		no bid	237.71	2,852.52		256.00	3,072.00		226.33	2,715.96
	Freight		no bid		-			385.00			-
	Installation		no bid		780.00			500.00			535.00
	<b>HON TOTAL</b>		<b>no bid</b>		<b>16,943.83</b>			<b>17,434.26</b>			<b>15,561.42</b>

Troy School District											
GROW Program Furniture											
Bid 9532											
		Great Lakes Furn Supply Inc.		School Specialty		Learning Consultants			Corporate Express		
Qty	Description	Unit	Total	Unit	Total	Alt.	Unit	Total	Alt.	Unit	Total
	Trendway										
1	Acoustical Panel 24x66	131.27	131.27		no bid			no bid	Hon	119.29	119.29
1	Acoustical Panel 48x66	180.62	180.62		no bid			no bid	Hon	159.62	159.62
1	Adj Wall Starter Rail	44.42	44.42		no bid			no bid	Hon	28.13	28.13
1	Storage Tower	533.64	533.64		no bid			no bid	Hon	518.78	518.78
1	Work Surface, Rectangular	76.99	76.99		no bid			no bid	Hon	115.22	115.22
2	End Panel Work Top	69.42	138.84		no bid			no bid	Hon	51.17	102.34
1	90 Degree Cover	25.66	25.66		no bid			no bid	Hon	38.63	38.63
1	Flipper Door Storage Unit	134.89	134.89		no bid			no bid	Hon	143.55	143.55
1	Lateral file 4-drawer	349.07	349.07		no bid			no bid	Hon	439.83	439.83
1	Acoustical Panel 60x66	206.61	206.61		no bid			no bid	Hon	172.83	172.83
1	Wall Starter Rail	27.31	27.31		no bid			no bid	Hon	38.29	38.29
4	Systems Frame	120.41	481.64		no bid			no bid	Hon	192.83	771.32
4	Power Data Tile w/bracket	56.92	227.68		no bid			no bid	Hon		inc
4	Power Data Tile	20.07	80.28		no bid			no bid	Hon		inc
4	Smart Tile 30x30	21.71	86.84		no bid			no bid	Hon		inc
4	Smart Tile 30x30	21.71	86.84		no bid			no bid	Hon		inc
4	Acoustical Tile 30x24	30.93	123.72		no bid			no bid	Hon		inc
4	Acoustical Tile 30x24	30.93	123.72		no bid			no bid	Hon		inc
4	Acoustical Tile 30x24	30.93	123.72		no bid			no bid	Hon		inc
4	Acoustical Tile 30x24	30.93	123.72		no bid			no bid	Hon		inc
1	Work Surface, Rectangular	92.78	92.78		no bid			no bid	Hon	134.54	134.54
5	Work Surface Support Brack	6.25	31.25		no bid			no bid	Hon	9.15	45.75
6	Systems Frame 85x24	117.45	704.70		no bid			no bid	Hon	180.63	1,083.78
6	Power Data Tile w/bracket	35.86	215.16		no bid			no bid	Hon		inc
6	Power Data Tile	18.10	108.60		no bid			no bid	Hon		inc
6	Smart Tile 24x30	17.77	106.62		no bid			no bid	Hon		inc
6	Smart Tile 24x30	17.77	106.62		no bid			no bid	Hon		inc
6	Acoustical Tile 24x24	26.98	161.88		no bid			no bid	Hon		inc
6	Acoustical Tile 24x24	26.98	161.88		no bid			no bid	Hon		inc
6	Acoustical Tile 24x24	26.98	161.88		no bid			no bid	Hon		inc
6	Acoustical Tile 24x24	26.98	161.88		no bid			no bid	Hon		inc
2	Worktop Support Left	15.79	31.58		no bid			no bid	Hon		inc

Troy School District											
GROW Program Furniture											
Bid 9532											
		Great Lakes Furn Supply Inc.		School Specialty		Learning Consultants			Corporate Express		
Qty	Description	Unit	Total	Unit	Total	Alt.	Unit	Total	Alt.	Unit	Total
11	Work Surface Rectangular	90.15	991.65		no bid			no bid	Hon	123.36	1,356.96
5	Contrada Powerpac Connec	23.69	118.45		no bid			no bid	Hon		inc
4	Powerpac Block	27.31	109.24		no bid			no bid	Hon	47.78	191.12
1	Base Feed 20-amp plug	38.49	38.49		no bid			no bid	Hon	61.68	61.68
2	Systems Frame 85x48	145.42	290.84		no bid			no bid	Hon	249.42	498.84
2	Power Data Tile w/bracket	62.51	125.02		no bid			no bid	Hon		inc
2	Power Data Tile	26.65	53.30		no bid			no bid	Hon		inc
2	Smart Tile 48x30	26.98	53.96		no bid			no bid	Hon		inc
2	Smart Tile 48x30	26.98	53.96		no bid			no bid	Hon		inc
2	Acoustical Tile 48x24	35.86	71.72		no bid			no bid	Hon		inc
2	Acoustical Tile 48x24	35.86	71.72		no bid			no bid	Hon		inc
2	Acoustical tile 48x24	35.86	71.72		no bid			no bid	Hon		inc
2	Acoustical Tile 48x24	35.86	71.72		no bid			no bid	Hon		inc
1	Special Worksurface	115.15	115.15		no bid			no bid	Hon	120.98	120.98
3	Work Surface Rectangular	76.99	230.97		no bid			no bid	Hon	115.22	345.66
2	Powerpac Block	27.31	54.62		no bid			no bid	Hon	50.49	100.98
1	Work Surface Support Right	22.37	22.37		no bid			no bid	Hon		inc
4	Work Surface Support Right	15.79	63.16		no bid			no bid	Hon		inc
1	Dbl Door Storage Cabinet	222.40	222.40		no bid			no bid	Hon	245.39	245.39
3	Work Surface Support Left	15.79	47.37		no bid			no bid	Hon		inc
9	Acoustical Panel 48x48	159.24	1,433.16		no bid			no bid	Hon	100.65	905.85
1	Worktop Support Right	15.79	15.79		no bid			no bid	Hon	9.15	9.15
9	Worktop Support Right	22.37	201.33		no bid			no bid	Hon		inc
4	Acoustical Panel 30x48	127.32	509.28		no bid			no bid	Hon	107.77	431.08
1	Adj Wall Starter Rail	36.85	36.85		no bid			no bid	Hon	27.79	27.79
1	4-Way Connector Kit	50.67	50.67		no bid			no bid	Hon	42.70	42.70
3	3-Way Connector Kit	50.67	152.01		no bid			no bid	Hon	42.70	128.10
6	Panel End Cover	28.95	173.70		no bid			no bid	Hon	7.12	42.72
1	Corner Work Surface	156.28	156.28		no bid			no bid	Hon	196.22	196.22
1	Work Surface Support Brack	2.96	2.96		no bid			no bid	Hon		inc
1	Three-Way Cover	24.35	24.35		no bid			no bid	Hon		inc
3	90 Degree Cover	24.68	74.04		no bid			no bid	Hon	30.16	90.48
3	Lateral file w/storage cabine	694.19	2,082.57		no bid			no bid	Hon	557.67	1,673.01
	Freight		131.83		no bid			no bid			-



Troy School District									
GROW Program Furniture									
Bid 9532									
		Office Express		Interior Environments		Global Office Solutions			
Qty	Description	Unit	Total		Unit	Total	Alt.	Unit	Total
	<b>Artopex</b>								
2	Corner Tble	350.00	700.00		281.71	563.42	Inline Systems Latitude	246.12	492.24
2	Dual-Dpt Tbl Chg R	215.00	430.00		170.59	341.18	Inline Systems Latitude	175.86	351.72
1	Dual-Dpt Tbl Chg L	215.00	215.00		170.59	170.59	Inline Systems Latitude	175.86	175.86
4	FS Drawer Pedestal	275.00	1,100.00		310.98	1,243.92	18x27	288.98	1,155.92
2	Mobile Pedestal Casters	290.00	580.00		304.12	608.24	Laminate Top No cushion seat	275.72	551.44
4	Wall-Mount Hutch	185.00	740.00		196.65	786.60	doors/non locking	260.26	1,041.04
8	Wall Mount Bracket	12.00	96.00			incl	Inline Systems Latitude	9.28	74.24
1	Dual-Dpt Tbl Chg L	210.00	210.00		170.59	170.59	Inline Systems Latitude	175.86	175.86
1	Tackboard	105.00	105.00		125.30	125.30	68x16	132.56	132.56
	Freight		-			incl			-
	Installation		120.00			450.00			400.00
	<b>ARTOPEX TOTAL</b>		<b>4,296.00</b>			<b>4,459.84</b>			<b>4,550.88</b>
	<b>HON</b>								
8	Task/lab Stool, armless	111.00	888.00		128.60	1,028.80		129.70	1,037.60
2	Teacher/Task Chair, armles	89.00	178.00		101.05	202.10		102.03	204.06
2	Low-Back Dual Action	262.00	524.00		302.19	604.38		307.92	615.84
9	Task, Swivel	66.00	594.00		76.71	690.39		78.45	706.05
1	Cart for Stacking chairs	130.00	130.00		152.95	152.95		158.72	158.72
25	Stack chair, armless	198.00	4,950.00		230.12	5,753.00		232.19	5,804.75
3	Task/lab Stool w/arms	126.00	378.00		146.98	440.94		148.29	444.87
1	Table Truck	549.00	549.00		636.14	636.14		650.30	650.30
14	Half-Round Table	203.00	2,842.00		235.16	3,292.24		240.35	3,364.90
12	Rectangle Table	207.00	2,484.00		241.14	2,893.68		246.70	2,960.40
	Freight		-			incl			-
	Installation		120.00			500.00			850.00
	<b>HON TOTAL</b>		<b>13,637.00</b>			<b>16,194.62</b>			<b>16,797.49</b>

Troy School District									
GROW Program Furniture									
Bid 9532									
		Office Express		Interior Environments		Global Office Solutions			
Qty	Description	Unit	Total		Unit	Total	Alt.	Unit	Total
Trendway									
1	Acoustical Panel 24x66	131.27	131.27	Allsteel				164.03	164.03
1	Acoustical Panel 48x66	180.62	180.62	Allsteel				225.70	225.70
1	Adj Wall Starter Rail	44.42	44.42	Allsteel				55.50	55.50
1	Storage Tower	523.77	523.77	Allsteel				654.49	654.49
1	Work Surface, Rectangular	76.99	76.99	Allsteel				96.20	96.20
2	End Panel Work Top	69.42	138.84	Allsteel				86.74	173.48
1	90 Degree Cover	25.66	25.66	Allsteel				32.07	32.07
1	Flipper Door Storage Unit	131.60	131.60	Allsteel				164.44	164.44
1	Lateral file 4-drawer	345.78	345.78	Allsteel				432.08	432.08
1	Acoustical Panel 60x66	206.61	206.61	Allsteel				258.18	258.18
1	Wall Starter Rail	27.31	27.31	Allsteel				34.12	34.12
4	Systems Frame	120.41	481.64	Allsteel				150.47	601.88
4	Power Data Tile w/bracket	56.92	227.68	Allsteel				71.12	284.48
4	Power Data Tile	20.07	80.28	Allsteel				25.08	100.32
4	Smart Tile 30x30	18.75	75.00	Allsteel				27.13	108.52
4	Smart Tile 30x30	18.75	75.00	Allsteel				27.13	108.52
4	Acoustical Tile 30x24	30.93	123.72	Allsteel				38.64	154.56
4	Acoustical Tile 30x24	30.93	123.72	Allsteel				38.64	154.56
4	Acoustical Tile 30x24	30.93	123.72	Allsteel				38.64	154.56
4	Acoustical Tile 30x24	30.93	123.72	Allsteel				38.64	154.56
1	Work Surface, Rectangular	92.78	92.78	Allsteel				115.93	115.93
5	Work Surface Support Brack	6.25	31.25	Allsteel				7.81	39.05
6	Systems Frame 85x24	117.45	704.70	Allsteel				146.77	880.62
6	Power Data Tile w/bracket	35.86	215.16	Allsteel				44.81	268.86
6	Power Data Tile	18.10	108.60	Allsteel				22.61	135.66
6	Smart Tile 24x30	15.13	90.78	Allsteel				22.20	133.20
6	Smart Tile 24x30	15.13	90.78	Allsteel				22.20	133.20
6	Acoustical Tile 24x24	26.98	161.88	Allsteel				33.71	202.26
6	Acoustical Tile 24x24	26.98	161.88	Allsteel				33.71	202.26
6	Acoustical Tile 24x24	26.98	161.88	Allsteel				33.71	202.26
6	Acoustical Tile 24x24	26.98	161.88	Allsteel				33.71	202.26
2	Worktop Support Left	15.79	31.58	Allsteel				19.73	39.46



Troy School District									
GROW Program Furniture									
Bid 9532									
	Office Express			Interior Environments			Global Office Solutions		
Qty	Description	Unit	Total		Unit	Total	Alt.	Unit	Total
11	Work Surface Rectangular	90.15	991.65	Allsteel				112.64	1,239.04
5	Contrada Powerpac Connec	23.69	118.45	Allsteel				29.60	148.00
4	Powerpac Block	27.31	109.24	Allsteel				34.12	136.48
1	Base Feed 20-amp plug	38.49	38.49	Allsteel				48.10	48.10
2	Systems Frame 85x48	145.42	290.84	Allsteel				181.71	363.42
2	Power Data Tile w/bracket	62.51	125.02	Allsteel				78.11	156.22
2	Power Data Tile	26.65	53.30	Allsteel				33.30	66.60
2	Smart Tile 48x30	22.04	44.08	Allsteel				33.71	67.42
2	Smart Tile 48x30	22.04	44.08	Allsteel				33.71	67.42
2	Acoustical Tile 48x24	35.86	71.72	Allsteel				44.81	89.62
2	Acoustical Tile 48x24	35.86	71.72	Allsteel				44.81	89.62
2	Acoustical tile 48x24	35.86	71.72	Allsteel				44.81	89.62
2	Acoustical Tile 48x24	35.86	71.72	Allsteel				44.81	89.62
1	Special Worksurface	115.15	115.15	Allsteel				115.93	115.93
3	Work Surface Rectangular	76.99	230.97	Allsteel				96.20	288.60
2	Powerpac Block	27.31	54.62	Allsteel				34.12	68.24
1	Work Surface Support Right	22.37	22.37	Allsteel				27.96	27.96
4	Work Surface Support Right	15.79	63.16	Allsteel				19.73	78.92
1	Dbl Door Storage Cabinet	219.11	219.11	Allsteel				273.80	273.80
3	Work Surface Support Left	15.79	47.37	Allsteel				19.73	59.19
9	Acoustical Panel 48x48	159.24	1,433.16	Allsteel				198.98	1,790.82
1	Worktop Support Right	15.79	15.79	Allsteel				19.73	19.73
9	Worktop Support Right	22.37	201.33	Allsteel				27.96	251.64
4	Acoustical Panel 30x48	127.32	509.28	Allsteel				159.10	636.40
1	Adj Wall Starter Rail	36.85	36.85	Allsteel				46.04	46.04
1	4-Way Connector Kit	50.67	50.67	Allsteel				63.31	63.31
3	3-Way Connector Kit	50.67	152.01	Allsteel				63.31	189.93
6	Panel End Cover	28.95	173.70	Allsteel				36.18	217.08
1	Corner Work Surface	156.28	156.28	Allsteel				195.28	195.28
1	Work Surface Support Brackl	2.96	2.96	Allsteel				3.70	3.70
1	Three-Way Cover	24.35	24.35	Allsteel				30.42	30.42
3	90 Degree Cover	24.68	74.04	Allsteel				30.83	92.49
3	Lateral file w/storage cabine	694.19	2,082.57	Allsteel				867.44	2,602.32
	Freight		-	Allsteel					132.00

