

REQUEST FOR QUOTATION	<p style="text-align: center;">TROY SCHOOL DISTRICT</p> <p style="text-align: center;">1140 RANKIN, TROY, MICHIGAN 48083</p> <p style="text-align: center;">248-823-4052</p> <p style="text-align: center;">FAX: 248-823-4077</p>	REQUISITION
No. 9509		
DUE DATE NO LATER THAN 4-14-08 3 p.m.		DATE 3-31-08

REQUEST FOR QUOTE – NOT AN ORDER

THIS FORM MUST BE UTILIZED WHEN RESPONDING TO THIS REQUEST
BID ENVELOPE ENCLOSED

THE RFQ NUMBER MUST APPEAR ON ALL QUOTATIONS AND RELATED CORRESPONDENCE, THIS IS NOT AN ORDER

Quantity	DESCRIPTION	UNIT PRICE	AMOUNT
	<p>Please supply us with your bid to furnish the Troy School District with Wall Cabinets for Smith Middle School.</p> <p style="text-align: center;">Copies of the bid are available at: www.troy.k12.mi.us/purchasing/items_out_for_bid.htm</p> <p style="text-align: center;">Bid recaps will be available at: troy.k12.mi.us/purchasing/index.htm</p> <p style="text-align: center;"><u>FACSIMILE BID IS NOT ACCEPTABLE</u></p> <p>Bids will not be accepted if submitted after the deadline specified (local time) in the advertisement to bid or in the information to bidders. The late submission of a bid makes the bid nonrepsonsive and is a material defect which shall not be waived by the Board of Education. Delays in the mail will not be considered. All Late bids in the mail will be returned to the bidder unopened.</p> <p>Proposal for the submission of alternatives by vendors will be accepted and reviewed. However, if any substitution or departure is not clearly noted and described, it will be understood that the bid intends to exactly meet the specifications.</p> <p>The Board of Education shall be the sole judge as to whether the proposed goods are "equal" or "approved". Quotations must be mailed or delivered to the Purchasing Office, 1140 Rankin, Troy, MI 48083 no later than 3 p.m. on the date shown above. Michigan State Sales and Use Taxes and Federal Excise Taxes do not apply unless otherwise indicated. Exemption certificates will be furnished when necessary. This request imposes no obligations on the buyer. The Board of Education reserves the right to accept or reject any or all bids or to split awards by items or to accept bids, which will best serve the Board of Education.</p>		

THIS AREA MUST BE FILLED IN

DELIVERY TIME	PRICES FIRM FOR	NAME OF COMPANY	TELEPHONE NO.
TERMS		NO. & STREET	FAX #
FOB DELIVERED	ALL DELIVERY CHARGES MUST BE INCLUDED IN PRICES SHOWN	CITY, STATE & ZIP CODE	E-MAIL
CONTACT PERSON (PLEASE PRINT)		SIGNATURE	DATE

AFFIDAVIT OF BIDDER

The undersigned, the owner or authorized officer of _____
(the "Bidder), pursuant to the familial disclosure requirement provided in the _____
_____ (the "School District") advertisement for construction bids, hereby
represent and warrant except as provided below, that no familial relationships exist
between the over(s) or any employee of
_____ and any member of the Board of Education of the
School District or the Superintendent of the School District.

List any Familial Relationships:

BIDDER:

By: _____

Its: _____

STATE OF MICHIGAN)
)ss.
COUNTY OF _____)

This instrument was acknowledged before me on the _____ day of _____, 2008,
by _____.

,Notary Public

_____ County, Michigan

My Commission Expires: _____

Acting in the County of: _____

Troy School District
Bid# 9509
Wall Cabinets – Smith Middle School

Cabinets	\$ _____
Installation	\$ _____
Freight	\$ _____
Any Other Charges (MUST identify)	\$ _____

Troy School District
Bid# 9509
Wall Cabinets – Smith Middle School

The Troy School District is seeking qualified bids for the construction of wall cabinets at its Smith Middle School. The cabinets are to be fabricated and installed by awarded contractor.

Cabinets are to be wall mounted, 2 hinged doors, 1 adjustable shelf with clear inside dept of 12". Cabinets are to be lockable with one master key. Cabinet style shall be either of the following:

- LSI Style # 3052
- TMI Style # W2052
- Case Style # W0101
- Stevens Style # 15129

Cabinet size shall be 36"W x 14" D x 24" H

REFER TO TAG "W-3" ON THE ATTACHED DRAWING.

Each bid shall be accompanied by a certified check, cashier's check, money order or a bid bond made payable to the Troy School District in an amount not less than five percent (5%) of the base bid as a bid guarantee.

Bid proposals will be publicly opened immediately following receipt of bids by the Troy School District, and evaluated by the District, with awards subsequently made by Troy School District.

The District shall not open, consider, or accept a Bid Proposal that is received after the date and time specified for bid submission in this Advertisement for Bids.

Bid specifications will also be available for free download at the District's website:
www.Troy.k12.mi.us/Purchasing/Items_Out_for_bid.htm

Bid proposals shall be on forms furnished by Troy School District. Bidders will be required to submit with their Bid Proposals, a notarized Familial Relationship Disclosure Form included within this bid document, a Bid Security by a qualified surety authorized to do business in the State of Michigan where the Project is located, an OSHA Form 300 for the most recent completed year, their worker's compensation Experience Modification Rate (EMR) factor, and any other information required in the Instructions to Bidders. Bidder shall not withdraw a Bid Proposal for a period of **forty-five (45) Days** after date for receipt of Bid Proposals.

All Bid Proposals shall be accompanied by the sworn and notarized statement included, disclosing any familiar relationship that exists between the District or any employee of the bidder and any member of the School Board or the superintendent of the School District. Bid proposals that do not include this sworn notarized disclosure statement will not be considered accepted.

Site Review:

To avoid disruption to the educational program NO contractors will be allowed on site. Bidders are advised to utilize the measurements provided within the bid documents.

Awarded vendor only will be allowed access to buildings to verify final measurements.

Proposal Submittal:

All proposals for the work outlined hereunder are due no later than 3:00 pm on Monday, April 14, 2008 at the Troy School District's Purchasing Office, 1140 Rankin, Troy, MI 48083. NO PROPOSALS WILL BE ACCEPTED AFTER THIS TIME. All proposals MUST be in a sealed envelope clearly marked "Smith Middle School Cabinetry BID# 9509". Facsimile bids are NOT acceptable.

All proposals must include a signed and notarized "Statement of Familial Disclosure". Any proposal which does not include this statement signed and notarized will be considered incomplete and will be rejected.

The successful bidder and its subordinate parties shall comply with the Prevailing Wage requirements for all work as required by the State of Michigan Public Act 166 dated 1965 as amended.

Cabinets shall comply with the additional following specifications:

SECTION 12355
INSTITUTIONAL CASEWORK

PART 1 - GENERAL

1.1 RELATED DOCUMENTS

- A. Drawings and general provisions of the Contract, including General and Supplementary Conditions and Division 1 Specification Sections, apply to this Section.

1.2 SUMMARY

A. Section Includes:

1. Plastic-laminate-faced wood cabinets of stock design.
2. Plastic-laminate countertops.
3. Wall shelving.
4. Wood-faced cabinets of stock design.

B. Related Sections:

1. Division 6 Section "Interior Architectural Woodwork."
2. Division 9 Section "Resilient Wall Base and Accessories" for resilient base applied to manufactured wood casework.

1.3 DEFINITIONS

- A. MDF: Medium-density fiberboard.
- B. Exposed Portions of Cabinets: Surfaces visible when doors and drawers are closed, including bottoms of cabinets more than 48 inches above floor, and surfaces visible in open cabinets.
- C. Semiexposed Portions of Cabinets: Surfaces behind opaque doors, such as interiors of cabinets, shelves, dividers, interiors and sides of drawers, and interior faces of doors. Tops of cases 78 inches or more above floor are defined as semiexposed.
- D. Concealed Portions of Cabinets: Surfaces not usually visible after installation, including sleepers, web frames, dust panels, and ends and backs that are placed directly against walls or other cabinets.

- E. Hardwood Plywood: A panel product composed of layers or plies of veneer, or of veneers in combination with lumber core, hardboard core, MDF core, or particleboard core, joined with adhesive, and faced both front and back with hardwood veneers.

1.4 SUBMITTALS

- A. Product Data: For each type of product indicated.
- B. Shop Drawings: Include plans, elevations, sections, details, and attachments to other work. Show fabrication details, including types and locations of hardware. Show installation details, including field joints and filler panels. Indicate manufacturer's catalog numbers for casework.
- C. Qualification Data: For qualified Installer.

1.5 QUALITY ASSURANCE

- A. Manufacturer Qualifications: A qualified manufacturer that is certified for chain of custody by an FSC-accredited certification body.
- B. Installer Qualifications: Manufacturer's authorized representative who is trained and approved for installation of units required for this Project.
- C. Source Limitations: Obtain manufactured wood casework from single source from single manufacturer.
- D. Quality Standard: Unless otherwise indicated, comply with requirements for modular cabinets in AWT's "Architectural Woodwork Quality Standards."
- E. Product Designations: Drawings indicate sizes, configurations, and finish material of manufactured wood casework by referencing designated manufacturer's catalog numbers. Other manufacturers' casework of similar sizes and door and drawer configurations, of same finish material, and complying with the Specifications may be considered. Refer to Division 1 Section "Product Requirements."

1.6 DELIVERY, STORAGE, AND HANDLING

- A. Deliver manufactured wood casework only after painting, utility roughing-in, and similar operations that could damage, soil, or deteriorate casework have been completed in installation areas. If casework must be stored in other than installation areas, store only in areas where environmental conditions meet requirements specified in "Project Conditions" Article.
- B. Keep finished surfaces covered with polyethylene film or other protective covering during handling and installation.

1.7 PROJECT CONDITIONS

- A. Environmental Limitations: Do not deliver or install manufactured wood casework until spaces are enclosed and weathertight, wet work in spaces is complete and dry, work above ceilings is

complete, and temporary HVAC system is operating and maintaining ambient temperature and humidity conditions at occupancy levels during the remainder of the construction period.

- B. Environmental Limitations: Do not deliver or install manufactured wood casework until building is enclosed, wet work is complete, and HVAC system is operating and maintaining temperature between 60 and 90 deg F and relative humidity at occupancy levels during the remainder of the construction period.
- C. Field Measurements: Verify actual dimensions of construction contiguous with manufactured wood casework by field measurements before fabrication.

1.8 COORDINATION

- A. Coordinate layout and installation of framing and reinforcements in walls and partitions for support of manufactured wood casework.

1.9 WARRANTY

- A. Special Warranty: Manufacturer's standard form in which manufacturer agrees to repair or replace components of manufactured wood casework that fail in materials or workmanship within specified warranty period.
 - 1. Failures include, but are not limited to, the following:
 - a. Delamination of components or other failures of glue bond.
 - b. Warping of components.
 - c. Failure of operating hardware.
 - d. Deterioration of finishes.
 - 2. Warranty Period: Ten years from date of Substantial Completion.

1.10 EXTRA MATERIALS

- A. Furnish complete touchup kit for each type and finish of manufactured wood casework provided. Include scratch fillers, stains, finishes, and other materials necessary to perform permanent repairs to damaged casework finish.

PART 2 - PRODUCTS

2.1 MANUFACTURERS

- A. Basis-of-Design Product: Subject to compliance with requirements, provide product indicated on Drawings or comparable product by one of the following:
 - 1. Plastic-Laminate-Faced Manufactured Casework:
 - a. Case Systems Inc.

- b. Stevens Industries, Inc.
- c. TMI Systems Design Corporation.
- d. Strata.

2. Wood-Faced Manufactured Casework:

- a. Campbell Rhea.
- b. TMI.
- c. Architect's pre-approved equal.

2.2 MATERIALS, GENERAL

- A. Low-Emitting Materials: Provide manufactured wood casework, including countertops, made with adhesives and composite wood products containing no urea formaldehyde.
- B. Maximum Moisture Content for Lumber: 7 percent for hardwood and 12 percent for softwood.
- C. Hardwood Plywood: HPVA HP-1, either veneer core or particleboard core unless otherwise indicated.
- D. Softwood Plywood: DOC PS 1.
- E. Particleboard: ANSI A208.1, Grade M-2.
- F. Hardboard: AHA A135.4, Class 1 Tempered.
- G. Plastic Laminate: High-pressure decorative laminate complying with NEMA LD 3.
 - 1. Manufacturers: Subject to compliance with requirements, provide products by one of the following:
 - a. Formica Corporation.
 - b. Nevamar Company, LLC; Decorative Products Div.
 - c. Wilsonart International; Div. of Premark International, Inc.
- H. Edgebanding for Plastic Laminate: Rigid PVC extrusions, through color with satin finish, 3 mm thick at doors and drawer fronts, 1 mm thick elsewhere.
- I. Edgebanding for Wood-Veneered Construction: Minimum 1/8 inch thick, solid wood of same species as face veneer.
 - 1. Select wood edgebanding for grain and color compatible with face veneers.

2.3 CABINET MATERIALS

- A. Exposed Cabinet Materials:

1. Wood Species: Red oak.
2. Plywood: Hardwood plywood with face veneer of species indicated, selected for compatible color and grain. Grade A exposed faces at least 1/50 inch thick, and Grade J crossbands. Provide backs of same species as faces.
 1. Face Veneer Cut: To match existing.
3. Plastic Laminate: Grade VGS.
4. Unless otherwise indicated, provide specified edgebanding on all exposed edges.

B. Semiexposed Cabinet Materials:

1. Plastic Laminate: Grade VGS.
 - a. Provide plastic laminate for semiexposed surfaces unless otherwise indicated.
 - b. Provide plastic laminate for interior faces of doors and drawer fronts and where indicated.

C. Concealed Cabinet Materials:

1. Plastic Laminate: Grade BKL.

2.4 DESIGN, COLOR, AND FINISH

A. Design: Provide manufactured wood casework of the following design:

1. Flush overlay with wire pulls.
2. For wood casework, match existing style.

B. Plastic-Laminate Colors, Patterns, and Finishes: As indicated in Schedule.

C. PVC Edgebanding Color: As indicated in Schedule.

2.5 CABINET FABRICATION

A. Plastic-Laminate-Faced Cabinet Construction:

1. Bottoms and Ends of Cabinets, and Tops of Wall Cabinets and Tall Cabinets: 3/4-inch particleboard, plastic-laminate faced on exposed surfaces, melamine faced on semiexposed surfaces.
2. Shelves: 3/4-inch particleboard, plastic-laminate faced on exposed surfaces, melamine faced.
3. Backs of Cabinets: 1/2-inch particleboard, plastic-laminate faced on exposed surfaces, melamine faced on semiexposed surfaces.
4. Drawer Fronts: 3/4-inch particleboard, plastic-laminate faced.
5. Drawer Sides and Backs: 1/2-inch melamine faced particleboard, with glued dovetail or multiple-dowel joints.

6. Drawer Bottoms: 1/4-inch melamine faced particleboard glued and dadoed into front, back, and sides of drawers. Use 1/2-inch material for drawers more than 24 inches wide.
 7. Doors: 3/4-inch particleboard or MDF, plastic-laminate faced.
- B. Filler Strips: Provide as needed to close spaces between cabinets and walls, ceilings, and indicated equipment. Fabricate from same material and with same finish as cabinets.

2.6 FINISH FOR WOOD FACED MANUFACTURED CASEWORK

- A. Preparation: Sand lumber and plywood for manufactured wood casework construction before assembling. Sand edges of doors and drawer fronts and molded shapes with profile-edge sander. Sand casework after assembling for uniform smoothness at least equivalent to that produced by 220 grit sanding and without machine marks, cross sanding, or other surface blemishes.
- B. Staining: Remove fibers and dust and apply wash-coat sealer and stain to exposed and semiexposed surfaces as required to provide uniform color and to match approved samples.
- C. Finishing Closed-Grain Woods: Apply manufacturer's standard two-coat, baked, clear finish consisting of a thermosetting catalyzed sealer and a thermosetting catalyzed conversion varnish. Sand and wipe clean between applications of sealer and topcoat. Topcoat may be omitted on concealed surfaces.
- D. Finishing Open-Grain Woods: Apply manufacturer's standard three-coat, baked, clear finish consisting of a thermosetting catalyzed sealer and two coats of a thermosetting catalyzed conversion varnish. Sand and wipe clean between applications of sealer and topcoat and between topcoats. Topcoats may be omitted on concealed surfaces.

2.7 CASEWORK HARDWARE AND ACCESSORIES

- A. Hardware, General: Unless otherwise indicated, provide manufacturer's standard satin-finish, commercial-quality, heavy-duty hardware.
 1. Use threaded metal or plastic inserts with machine screws for fastening to particleboard except where hardware is through-bolted from back side.
- B. Butt Hinges: Powder-coated, semiconcealed, 5-knuckle hinges complying with BHMA A156.9, Grade 1, with antifriction bearings and rounded tips. Provide 2 hinges for doors less than 48 inches high and 3 hinges for doors more than 48 inches high.
- C. Pulls: Solid aluminum wire pulls, fastened from back with two screws. Provide 2 pulls for drawers more than 24 inches wide. Provide satin finish.
- D. Pulls: Semirecessed plastic pulls. For sliding doors, provide recessed plastic flush-pulls. Provide 2 pulls for drawers more than 24 inches wide.
- E. Door Catches: Powder-coated, nylon-roller spring catch or dual, self-aligning, permanent magnet catch. Provide 2 catches on doors more than 48 inches high.
- F. Drawer Slides: BHMA A156.9, Type B05091.

1. Heavy Duty (Grade 1HD-100 and Grade 1HD-200): Side mounted; full-extension type; zinc-plated, steel ball-bearing slides.
 2. Box Drawer Slides: 150 lbf.
 3. File Drawer Slides: 200 lbf.
- G. Drawer and Hinged Door Locks: Cylindrical (cam) type, 5-pin tumbler, brass with chrome-plated finish, and complying with BHMA A156.11, Grade 1.
1. Provide a minimum of two keys per lock and six master keys.
 2. Provide locks on all doors and drawers.
- H. Adjustable Shelf Supports: 2-pin locking plastic shelf rests complying with BHMA A156.9, Type B04013.
- I. Grommets for Cable Passage through Countertops: 1-1/2-inch OD, black, molded-plastic grommets and matching plastic caps with slot for wire passage.
- J. At Smith Middle School Home Skills Room all existing hardware and accessories are to be checked. Damaged or faulty hardware, including, but not limited to drawer slides, door hinges, and pulls are to be replaced. Verify in field.

2.8 COUNTERTOPS

- A. Countertops, General: Provide smooth, clean exposed tops and edges in uniform plane free of defects. Provide front and end overhang of 1 inch over base cabinets.
- B. Plastic-Laminate Tops: Plastic-laminate sheet, shop bonded to both sides of 1-1/8-inch plywood or particleboard. Sand surfaces to which plastic laminate is to be bonded.
1. Plastic Laminate for Flat Tops: Grade HGS.
 2. Plastic Laminate for Backing: Grade BKL.
 3. Provide 3-mm PVC edging on front edge of top, on top edges of backsplashes and end splashes, and on ends of tops and splashes.
 4. Construct top and backsplash from one piece of plastic laminate with rolled edges and coved intersection. Where indicated, provide separate end splashes fitted to top.
 5. Use exterior plywood or exterior glue particleboard for countertops containing sinks.

2.9 WALL SHELVING

- A. Plastic-Laminate Shelving: Plastic-laminate sheet, Grade HGL or HGP, shop bonded to both sides of particleboard. Sand surfaces to which plastic laminate is to be bonded.
1. Shelf Thickness: 1 inch.
 2. Edge Treatment: Finish both edges with rigid PVC extrusion, through color with satin finish, 3 mm thick.
- B. Adjustable Shelf Supports: Zinc-plated steel standards and shelf brackets, complying with BHMA A156.9, Types B04102 and B04112, surface mounted.

PART 3 - EXECUTION

3.1 EXAMINATION

- A. Examine areas, with Installer present, for compliance with requirements for installation tolerances, location of framing and reinforcements, and other conditions affecting performance of manufactured wood casework.
- B. Proceed with installation only after unsatisfactory conditions have been corrected.

3.2 CASEWORK INSTALLATION

- A. Install level, plumb, and true; shim as required, using concealed shims. Where manufactured wood casework abuts other finished work, apply filler strips and scribe for accurate fit, with fasteners concealed where practical.
- B. Base Cabinets: Set cabinets straight, level, and plumb. Adjust subtops within 1/16 inch of a single plane. Fasten cabinets to masonry or framing, wood blocking, or reinforcements in walls and partitions with fasteners spaced 24 inches o.c. Bolt adjacent cabinets together with joints flush, tight, and uniform. Align similar adjoining doors and drawers to a tolerance of 1/16 inch.
 - 1. Where base cabinets are not installed adjacent to walls, fasten to floor at toe space with fasteners spaced 16 inches o.c. Secure sides of cabinets to floor, where they do not adjoin other cabinets, with not less than two fasteners.
- C. Wall Cabinets: Hang cabinets straight, level, and plumb. Adjust fronts and bottoms within 1/16 inch of a single plane. Fasten to hanging strips, masonry, or framing, blocking, or reinforcements in walls or partitions. Align similar adjoining doors to a tolerance of 1/16 inch.
 - 1. Fasten through back, near top and bottom, at ends, and not more than 16 inches o.c.
 - 2. Use expansion anchors at solid masonry.
 - 3. Use No. 10 wafer-head screws sized for 1-inch penetration at wood hanging strips.
 - 4. Use No. 10 wafer-head screws sized for 1-inch penetration into wood framing or blocking at wood-framed partitions.
- D. Install hardware uniformly and precisely. Set hinges snug and flat in mortises unless otherwise indicated. Adjust and align hardware so moving parts operate freely and contact points meet accurately. Allow for final adjustment after installation.
- E. Adjust casework and hardware so doors and drawers operate smoothly without warp or bind. Lubricate operating hardware as recommended by manufacturer.

3.3 INSTALLATION OF TOPS

- A. Field Jointing: Where possible make in the same manner as shop jointing, using dowels, splines, adhesives, and fasteners recommended by manufacturer. Prepare edges to be joined in shop so Project-site processing of top and edge surfaces is not required. Locate field joints where shown on Shop Drawings.

1. Secure field joints in plastic-laminate countertops with concealed clamping devices located within 6 inches of front and back edges and at intervals not exceeding 24 inches. Tighten according to manufacturer's written instructions to exert a constant, heavy-clamping pressure at joints.
- B. Secure tops to cabinets with Z- or L-type fasteners or equivalent, using two or more fasteners at each front, end, and back.
- C. Abut top and edge surfaces in one true plane, with internal supports placed to prevent deflection.
- D. Secure backsplashes and end splashes to tops with concealed metal brackets at 16 inches o.c. and walls with adhesive.
- E. Seal junctures of tops, splashes, and walls with mildew-resistant silicone sealant or another permanently elastic sealing compound recommended by countertop material manufacturer.

3.4 INSTALLATION OF SHELVING

- A. Securely fasten shelf standards to masonry, partition framing, wood blocking, or reinforcements in partitions.
 1. Fasten shelf standards at ends and not more than 12 inches o.c.
 2. Use toggle bolts at hollow masonry.
 3. Use expansion anchors at solid masonry.
 4. Use toggle bolts in metal framing or metal backing at metal-framed partitions. Do not use wall anchors in gypsum board.
- B. Install shelf standards plumb and at heights to align shelf brackets for level shelves. Space standards not more than 30 inches o.c.
- C. Install shelving level and straight, closely fitted to other work where indicated.

3.5 CLEANING AND PROTECTING

- A. Repair or remove and replace defective work as directed on completion of installation.
- B. Clean finished surfaces, touch up as required, and remove or refinish damaged or soiled areas to match original factory finish, as approved by Architect.
- C. Protection: Provide 6-mil plastic or other suitable water-resistant covering over countertop surfaces. Tape to underside of countertop at a minimum of 48 inches o.c. Remove protection at Substantial Completion.

3.6 PLASTIC LAMINATE SCHEDULE

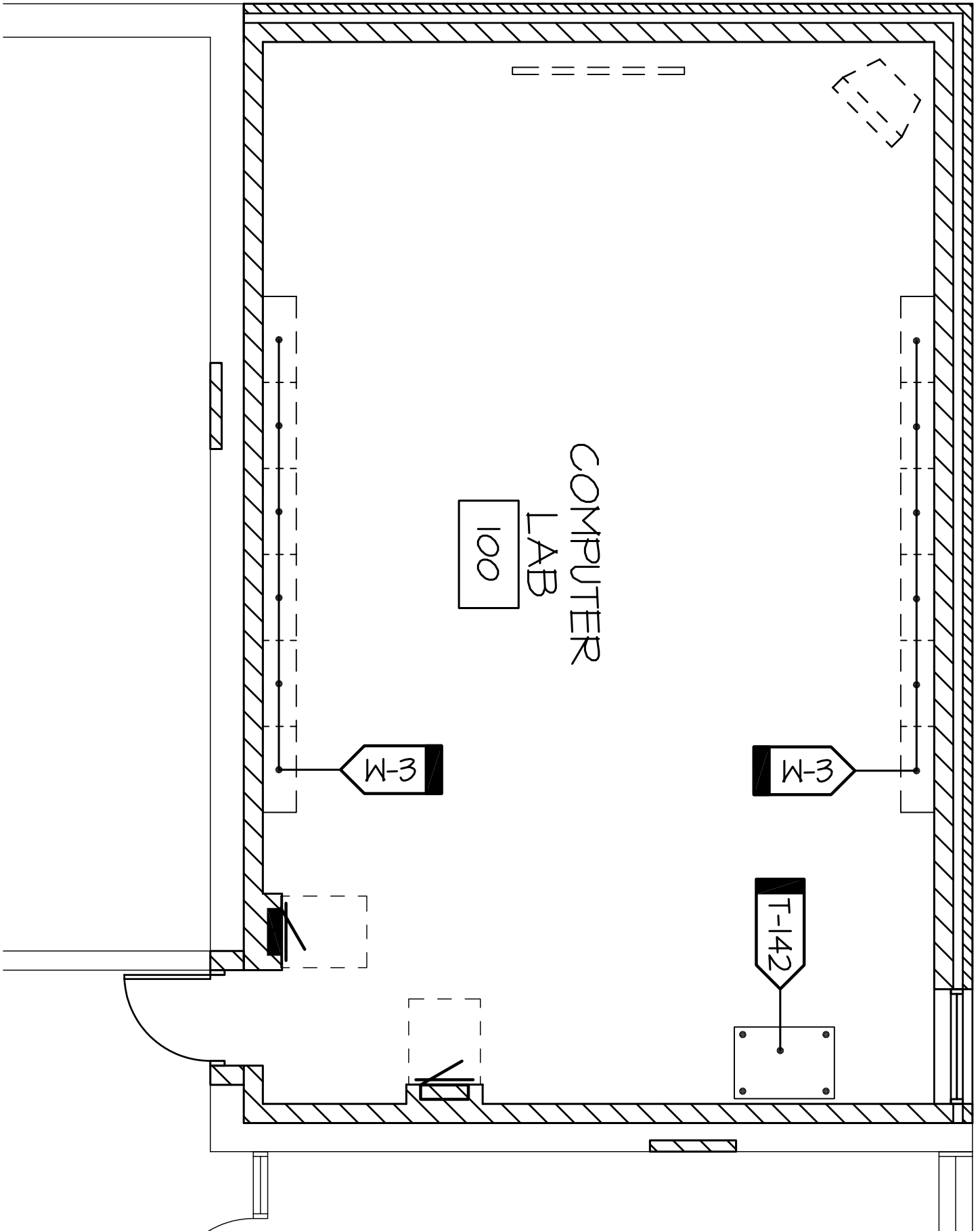
A. **Boulan:** Plastic Laminate as selected by Architect from full range of Wilsonart, Pionite, Nevamar and Formica.

B. **Smith:**

Vertical Surfaces: Wilsonart, Desert Zephyr, #4841-60.

Horizontal Surfaces: Wilsonart, Green Legacy, 4657-60

TAG SCHEDULE FOLLOWS





JENNIFER M. GRANHOLM
GOVERNOR

KEITH W. COOLEY
DIRECTOR

Informational Sheet: Prevailing Wages on State Projects
General Information Regarding Fringe Benefits

Certain fringe benefits **may** be credited toward the payment of the Prevailing Wage Rate:

- If a fringe benefit is paid directly to a construction mechanic
- If a fringe benefit contribution or payment is made on behalf of a construction mechanic
- If a fringe benefit, which may be provided to a construction mechanic, is pursuant to a written contract or policy
- If a fringe benefit is paid into a fund, for a construction mechanic

When a fringe benefit is not paid by an hourly rate, the hourly credit will be calculated based on the annual value of the fringe benefit divided by 2080 hours per year (52 weeks @ 40 hours per week).

The following is an example of the types of fringe benefits allowed and how an hourly credit is calculated:

Vacation	40 hours X \$14.00 per hour = \$560/2080 =	\$.27
Dental insurance	\$31.07 monthly premium X 12 mos. = \$372.84 /2080 =	\$.18
Vision insurance	\$5.38 monthly premium X 12 mos. = \$64.56/2080 =	\$.03
Health insurance	\$230.00 monthly premium X 12 mos. = \$2,760.00/2080 =	\$1.33
Life insurance	\$27.04 monthly premium X 12 mos. = \$324.48/2080 =	\$.16
Tuition	\$500.00 annual cost/2080 =	\$.24
Bonus	4 quarterly bonus/year x \$250 = \$1000.00/2080 =	\$.48
401k Employer Contribution	\$2000.00 total annual contribution/2080 =	\$.96
Total Hourly Credit		\$3.65

Other examples of the types of fringe benefits allowed:

- Sick pay
- Holiday pay
- Accidental Death & Dismemberment insurance premiums

The following are examples of items that **will not** be credited toward the payment of the Prevailing Wage Rate

- Legally required payments, such as:
 - Unemployment Insurance payments
 - Workers' Compensation Insurance payments
 - FICA (Social Security contributions, Medicare contributions)
- Reimbursable expenses, such as:
 - Clothing allowance or reimbursement
 - Uniform allowance or reimbursement
 - Gas allowance or reimbursement
 - Travel time or payment
 - Meals or lodging allowance or reimbursement
 - Per diem allowance or payment
- Other payments to or on behalf of a construction mechanic that are not wages or fringe benefits, such as:
 - Industry advancement funds
 - Financial or material loans



STATE OF MICHIGAN

JENNIFER M. GRANHOLM
GOVERNOR

DEPARTMENT OF LABOR & ECONOMIC GROWTH
LANSING

KEITH W. COOLEY
DIRECTOR

REQUIREMENTS OF THE PREVAILING WAGES ON STATE PROJECTS ACT, PUBLIC ACT 166 OF 1965

The Michigan Department of Labor & Economic Growth determines prevailing rates pursuant to the Prevailing Wages on State Projects Act, Public Act 166 of 1965, as amended. The purpose of establishing prevailing rates is to provide minimum rates of pay that must be paid to workers on construction projects for which the state or a school district is the contracting agent and which is financed or financially supported by the state. By law, prevailing rates are compiled from the rates contained in collectively bargained agreements which cover the locations of the state projects. The official prevailing rates provide an hourly rate which includes wage and fringe benefit totals for designated construction mechanic classifications. The overtime rates also include wage and fringe benefit totals. Please pay special attention to the overtime and premium pay requirements. Prevailing wage is satisfied when wages plus fringe benefits paid to a worker are equal to or greater than the required rate.

State of Michigan responsibilities under the law:

- The department establishes the prevailing rate for each classification of construction mechanic **requested by a contracting agent** prior to contracts being let out for bid on a state project.

Contracting agent responsibilities under the law:

- If a contract is not awarded or construction does not start within 90 days of the date of the issuance of rates, a re-determination of rates must be requested by the contracting agent.
- Rates for classifications needed but not provided on the Prevailing Rate Schedule, **must** be obtained **prior** to contracts being let out for bid on a state project.
- The contracting agent, by written notice to the contractor and the sureties of the contractor known to the contracting agent, may terminate the contractor's right to proceed with that part of the contract, for which less than the prevailing rates have been or will be paid, and may proceed to complete the contract by separate agreement with another contractor or otherwise, and the original contractor and his sureties shall be liable to the contracting agent for any excess costs occasioned thereby.

Contractor responsibilities under the law:

- Every contractor and subcontractor shall keep posted on the construction site, in a conspicuous place, a copy of all prevailing rates prescribed in a contract.
- Every contractor and subcontractor shall keep an accurate record showing the name and occupation of and the actual wages and benefits paid to each construction mechanic employed by him in connection including certified payroll, as used in the industry, with said contract. This record shall be available for reasonable inspection by the contracting agent or the department.
- Each contractor or subcontractor is separately liable for the payment of the prevailing rate to its employees.
- The prime contractor is responsible for advising all subcontractors of the requirement to pay the prevailing rate prior to commencement of work.
- The prime contractor is secondarily liable for payment of prevailing rates that are not paid by a subcontractor.
- A construction mechanic shall only be paid the apprentice rate if registered with the United States Department of Labor, Bureau of Apprenticeship and Training and the rate is included in the contract.

Enforcement:

A person who has information of an alleged prevailing wage violation on a state project may file a complaint with the Wage & Hour Division. The department will investigate and attempt to resolve the complaint informally. During the course of an investigation, if the requested records and posting certification are not made available in compliance with Section 5 of Act 166, the investigation will be concluded and a referral to the Office of Attorney General for civil action will be made. The Office of Attorney General will pursue costs and fees associated with a lawsuit if filing is necessary to obtain records.

A violation of Act 166 will result in the contractor's name being added to the Prevailing Wage Act Violators List published on the division's website. This list includes the names and addresses of contractors and subcontractors the division has found in violation of Act 166 based on complaints from individuals and third parties. The Prevailing Wage Act Violators List is intended to inform contracting agents of contractors that have violated Act 166 for use in determining who should receive state-funded projects.

WAGE & HOUR DIVISION
P.O. BOX 30476 • LANSING, MICHIGAN 48909-7976
www.michigan.gov/wagehour • (517) 335-0400 • FAX (517) 335-0077



Michigan Department of Labor & Economic Growth *Wage & Hour Division*
OVERTIME PROVISIONS for MICHIGAN PREVAILING WAGE RATE SCHEDULE

1. Overtime is represented as a nine character code. Each character represents a certain period of time after the first 8 hours Monday thru Friday.

	Monday thru Friday	Saturday	Sunday & Holidays
First 8 Hours		4	8
9th Hour	1	5	
10th Hour	2	6	
Over 10 hours	3	7	

Overtime for Monday thru Friday after 8 hours:

the 1st character is for time worked in the 9th hour (8.1 - 9 hours)
the 2nd character is for time worked in the 10th hour (9.1 - 10 hours)
the 3rd character is for time worked beyond the 10th hour (10.1 and beyond)

Overtime on Saturday:

the 4th character is for time worked in the first 8 hours on Saturday (0 - 8 hours)
the 5th character is for time worked in the 9th hour on Saturday (8.1 - 9 hours)
the 6th character is for time worked in the 10th hour (9.1 - 10 hours)
the 7th character is for time worked beyond the 10th hour (10.01 and beyond)

Overtime on Sundays & Holidays

The 8th character is for time worked on Sunday or on a holiday

The last character indicates if an optional 4-day 10-hour per day workweek can be worked without paying overtime after 8 hours worked.

2. Overtime Indicators Used in the Overtime Provision:

H - means TIME AND ONE-HALF due
X - means TIME AND ONE-HALF due after 40 HOURS worked
D - means DOUBLE PAY due
Y - means YES an optional 4-day 10-hour per day workweek can be worked without paying overtime after 8 hours worked
N - means NO an optional 4-day 10-hour per day workweek *can not* be worked without paying overtime after 8 hours worked

3. EXAMPLES:

HHHHHHHDN - This example shows that the 1½ rate must be used for time worked after 8 hours Monday thru Friday (*characters 1 - 3*); for all hours worked on Saturday, 1½ rate is due (*characters 4 - 7*). Work done on Sundays or holidays must be paid double time (*character 8*). The N (*character 9*) indicates that 4 ten-hour days is not an acceptable workweek at regular pay.

XXXHHHHDY - This example shows that the 1½ rate must be used for time worked after 40 hours are worked Monday thru Friday (*characters 1-3*); for hours worked on Saturday, 1½ rate is due (*characters 4 - 7*). Work done on Sundays or holidays must be paid double time (*character 8*). The Y (*character 9*) indicates that 4 ten-hour days is an acceptable alternative workweek.

ENGINEERS - CLASSES OF EQUIPMENT LIST

UNDERGROUND ENGINEERS

CLASS I

Backfiller Tamper, Backhoe, Batch Plant Operator, Clam-Shell, Concrete Paver (2 drums or larger), Conveyor Loader (Euclid type), Crane (crawler, truck type or pile driving), Dozer, Dragline, Elevating Grader, End Loader, Gradall (and similar type machine), Grader, Power Shovel, Roller (asphalt), Scraper (self propelled or tractor drawn), Side Broom Tractor (type D-4 or larger), Slope Paver, Trencher (over 8' digging capacity), Well Drilling Rig, Mechanic, Slip Form Paver, Hydro Excavator.

CLASS II

Boom Truck (power swing type boom), Crusher, Hoist, Pump (1 or more 6" discharge or larger gas or diesel powered by generator of 300 amps or more, inclusive of generator), Side Boom Tractor (smaller than type D-4 or equivalent), Tractor (pneu-tired, other than backhoe or front end loader), Trencher (8' digging capacity and smaller), Vac Truck.

CLASS III

Air Compressors (600 cfm or larger), Air Compressors (2 or more less than 600 cfm), Boom Truck (non-swinging, non-powered type boom), Concrete Breaker (self-propelled or truck mounted, includes compressor), Concrete Paver (1 drum, ½ yard or larger), Elevator (other than passenger), Maintenance Man, Mechanic Helper, Pump (2 or more 4" up to 6" discharge, gas or diesel powered, excluding submersible pump), Pumpcrete Machine (and similar equipment), Wagon Drill Machine, Welding Machine or Generator (2 or more 300 amp or larger, gas or diesel powered).

CLASS IV

Boiler, Concrete Saw (40HP or over), Curing Machine (self-propelled), Farm Tractor (w/attachment), Finishing Machine (concrete), Firemen, Hydraulic Pipe Pushing Machine, Mulching Equipment, Oiler (2 or more up to 4", exclude submersible), Pumps (2 or more up to 4" discharge if used 3 hrs or more a day-gas or diesel powered, excluding submersible pumps), Roller (other than asphalt), Stump Remover, Vibrating Compaction Equipment (6' wide or over), Trencher (service) Sweeper (Wayne type and similar equipment), Water Wagon, Extend-a-Boom Forklift.

HAZARDOUS WASTE ABATEMENT ENGINEERS

CLASS I

Backhoe, Batch Plant Operator, Clamshell, Concrete Breaker when attached to hoe, Concrete Cleaning Decontamination Machine Operator, Concrete Pump, Concrete Paver, Crusher, Dozer, Elevating Grader, Endloader, Farm Tractor (90 h.p. and higher), Gradall, Grader, Heavy Equipment Robotics Operator, Hydro Excavator, Loader, Pug Mill, Pumpcrete Machines, Pump Trucks, Roller, Scraper (self-propelled or tractor drawn), Side Boom Tractor, Slip Form Paver, Slope Paver, Trencher, Ultra High Pressure Waterjet Cutting Tool System Operator, Vactors, Vacuum Blasting Machine Operator, Vertical Lifting Hoist, Vibrating Compaction Equipment (self-propelled), and Well Drilling Rig.

CLASS II

Air Compressor, Concrete Breaker when not attached to hoe, Elevator, End Dumps, Equipment Decontamination Operator, Farm Tractor (less than 90 h.p.), Forklift, Generator, Heater, Mulcher, Pigs (Portable Reagent Storage Tanks), Power Screens, Pumps (water), Stationary Compressed Air Plant, Sweeper, Water Wagon and Welding Machine.

Regular Crane Operators rate shall include: Mechanics, Crane Operators, Dragline Operators, Boom Truck Operators, Power Shovel Operators and Concrete Pumps with booms.

Revised: 03/25/08

Official Request 435
Requestor: TROY SCHOOL DISTRICT
Project Description: CABINETRY
Project Number: SMITH MIDDLE SCHOOL

Oakland County
Official 2008 Prevailing Wage Rates for State Funded Projects

Issue Date: 3/26/2008
Contract must be awarded by: 6/24/2008

Page 1 of 22

<u>Classification</u>			Last Updated	Straight Hourly	Time and a Half	Double Time	Overtime Provision
Asbestos & Lead Abatement Laborer							
Asbestos & Lead Abatement Laborer	MLDC		7/31/2007	\$32.65	\$43.39	\$54.13	H H H X X X D Y
Asbestos & Lead Abatement, Hazardous Material Handler							
Asbestos and Lead Abatement, Hazardous Material Handler	AS207		11/28/2007	\$32.65	\$44.75	\$56.85	H H H X X X D Y
Boilermaker							
Boilermaker	BO169		11/5/2007	\$51.27	\$76.00	\$100.74	H H H H H H D Y
Apprentice Rates:							
1st 6 months			\$38.12	\$56.28	\$74.44		
2nd 6 months			\$39.17	\$57.86	\$76.54		
3rd 6 months			\$40.23	\$59.45	\$78.66		
4th 6 months			\$41.29	\$61.04	\$80.78		
5th 6 months			\$42.33	\$62.60	\$82.86		
6th 6 months			\$44.44	\$65.76	\$87.08		
7th 6 months			\$46.54	\$68.91	\$91.28		
8th 6 months			\$48.65	\$72.08	\$95.50		
Bricklayer							
Bricklayer, stone mason, pointer, cleaner, caulker	BR1		12/20/2007	\$48.96	\$73.44	\$97.92	H H D H D D D N
Apprentice Rates:							
First 6 months			\$29.49	\$44.24	\$58.98		
2nd 6 months			\$31.31	\$46.97	\$62.62		
3rd 6 months			\$33.13	\$49.70	\$66.26		
4th 6 months			\$34.95	\$52.43	\$69.90		
5th 6 months			\$36.77	\$55.16	\$73.54		
6th 6 months			\$38.59	\$57.89	\$77.18		
7th 6 months			\$40.41	\$60.62	\$80.82		
8th 6 months			\$42.23	\$63.35	\$84.46		

Official Request #: 435
 Requestor: TROY SCHOOL DISTRICT
 Project Description: CABINETRY
 Project Number: SMITH MIDDLE SCHOOL
 County: Oakland

Official Rate Schedule
Every contractor and subcontractor shall keep posted on the construction site, in a conspicuous place, a copy of all prevailing wage and fringe benefit rates prescribed in a contract.

Official 2008 Prevailing Wage Rates for State Funded Projects

Issue Date: 3/26/2008

Contract must be awarded by: 6/24/2008

Page 2 of 22

<u>Classification</u>	Name	Description	Last Updated	Straight Hourly	Time and a Half	Double Time	Overtime Provision
-----------------------	------	-------------	--------------	-----------------	-----------------	-------------	--------------------

Carpenter

Carpet and Resilient Floor Layer, (does not include installation of prefabricated formica & parquet flooring which is to be paid carpenter rate)	CA1045	1/9/2008	\$42.24	\$59.86	\$77.47	H H H H D D D D N
--	--------	----------	---------	---------	---------	-------------------

Apprentice Rates:

1st 6 months	\$21.10	\$28.15	\$35.19
2nd 6 months	\$24.62	\$33.42	\$42.23
3rd 6 months	\$26.38	\$36.07	\$45.75
4th 6 months	\$28.15	\$38.72	\$49.29
5th 6 months	\$29.91	\$41.36	\$52.81
6th 6 months	\$31.67	\$44.01	\$56.33
7th 6 months	\$33.42	\$46.63	\$59.83
8th 6 months	\$35.19	\$49.28	\$63.37

Carpenter	CA687Z1	1/14/2008	\$46.58	\$66.30	\$86.02	H H D H D D D D Y
-----------	---------	-----------	---------	---------	---------	-------------------

Apprentice Rates:

1st Year	\$28.84	\$39.69	\$50.54
3rd 6 months	\$30.81	\$42.64	\$54.48
4th 6 months	\$32.78	\$45.60	\$58.42
5th 6 months	\$34.75	\$48.56	\$62.36
6th 6 months	\$36.73	\$51.53	\$66.32
7th 6 months	\$38.70	\$54.49	\$70.26
8th 6 months	\$40.66	\$57.43	\$74.18

Cement Mason

Cement Mason	CE514	7/20/2007	\$43.95	\$61.87	\$79.78	H H D H H H H D N
--------------	-------	-----------	---------	---------	---------	-------------------

Apprentice Rates:

1st 6 months	\$25.64	\$34.60	\$43.56
2nd 6 months	\$27.45	\$37.31	\$47.18
3rd 6 months	\$31.02	\$42.68	\$54.32
4th 6 months	\$34.61	\$48.05	\$61.50
5th 6 months	\$36.40	\$50.74	\$65.08
6th 6 months	\$39.99	\$56.13	\$72.26

Official Request #: 435
 Requestor: TROY SCHOOL DISTRICT
 Project Description: CABINETRY

 Project Number: SMITH MIDDLE SCHOOL
 County: Oakland

Official Rate Schedule
Every contractor and subcontractor shall keep posted on the construction site, in a conspicuous place, a copy of all prevailing wage and fringe benefit rates prescribed in a contract.

Official 2008 Prevailing Wage Rates for State Funded Projects

Issue Date: 3/26/2008

Contract must be awarded by: 6/24/2008

Page 3 of 22

<u>Classification</u>	Last Updated	Straight Hourly	Time and a Half	Double Time	Overtime Provision
Name Description					

Drywall					
Drywall Taper	PT-22-D		\$38.45	\$50.90	\$63.35 H H D H D D D D N

9/1/2006

Apprentice Rates:

First 3 months	\$26.00	\$32.23	\$38.45
Second 3 months	\$28.49	\$35.96	\$43.43
Second 6 months	\$30.98	\$39.69	\$48.41
Third 6 months	\$33.47	\$43.43	\$53.39
4th 6 months	\$34.71	\$45.29	\$55.87

Electrician

Road Way Electrical Work	EC-17		\$45.37	\$65.63	\$85.90 H H H H H H H D Y
Double time due after 16 hours on any calendar day and all hours Sunday.					

11/19/2007

Apprentice Rates:

1st 6 months	\$29.17	\$41.34	\$53.50
2nd 6 months	\$31.19	\$44.36	\$57.54
3rd 6 months	\$33.21	\$47.40	\$61.58
4th 6 months	\$35.23	\$50.43	\$65.62
5th 6 months	\$37.25	\$53.46	\$69.66
6th 6 months	\$41.32	\$59.57	\$77.80

Subdivision of county Holly not included
Inside Wireman

	EC-58-IW		\$53.62	\$71.49	\$89.36 H H H H H H H D N
--	----------	--	---------	---------	---------------------------

1/7/2008

Apprentice Rates:

0-1000 hours	\$32.18	\$39.33	\$46.48
1000-2000 hours	\$33.97	\$42.02	\$50.06
2000-3500 hours	\$35.75	\$44.68	\$53.62
3500-5000 hours	\$37.54	\$47.38	\$57.20
5000-6500 hours	\$41.12	\$52.74	\$64.36
6500-8000 hours	\$44.68	\$58.08	\$71.48

Sound and Communication Installer/Technician	EC-58-SC		\$32.54	\$44.20	\$55.86 H H H H H H H D N
--	----------	--	---------	---------	---------------------------

1/7/2008

Apprentice Rates:

Period 1	\$20.88	\$26.71	\$32.54
Period 2	\$22.04	\$28.46	\$34.86
Period 3	\$23.21	\$30.21	\$37.20
Period 4	\$24.38	\$31.96	\$39.54
Period 5	\$25.55	\$33.72	\$41.88
Period 6	\$26.71	\$35.46	\$44.20

Official Request #: 435
 Requestor: TROY SCHOOL DISTRICT
 Project Description: CABINetry
 Project Number: SMITH MIDDLE SCHOOL
 County: Oakland

Official Rate Schedule
 Every contractor and subcontractor shall keep posted on the construction site, in a conspicuous place, a copy of all prevailing wage and fringe benefit rates prescribed in a contract.

Official 2008 Prevailing Wage Rates for State Funded Projects

Issue Date: 3/26/2008

Contract must be awarded by: 6/24/2008

Page 4 of 22

Classification Name Description	Last Updated	Straight Hourly	Time and a Half	Double Time	Overtime Provision
Elevator Constructor					
Elevator Constructor	EL 36		\$56.46		\$94.99 D D D D D D D Y
Elevator Constructor	8/7/2007				
Apprentice Rates:					
1st Year Apprentice		\$37.74	\$58.93		
2nd Year Apprentice		\$41.90	\$66.94		
3rd Year Apprentice		\$43.98	\$70.95		
4th Year Apprentice		\$48.14	\$78.96		
Glazier					
Glazier	GL-357		\$42.60	\$56.83	H H H H H H H Y
	1/7/2008				
Apprentice Rates:					
1st 6 months		\$28.37	\$35.48		
2nd 6 months		\$29.80	\$37.63		
3rd 6 months		\$32.64	\$41.89		
4th 6 months		\$34.07	\$44.03		
5th 6 months		\$35.49	\$46.16		
6th 6 months		\$36.91	\$48.29		
7th 6 months		\$38.33	\$50.42		
8th 6 months		\$41.18	\$54.69		
Heat and Frost Insulator					
Spray Insulation	AS25S		\$20.14	\$29.14	H H H H H H H N
	3/5/2007				
Heat and Frost Insulator and Asbestos Worker					
Heat and Frost Insulators and Asbestos Workers	AS25		\$48.20	\$62.86	\$77.52 H H H H H H D Y
	3/5/2007				
Apprentice Rates:					
1st Year		\$29.59	\$37.66	\$45.72	
2nd Year		\$37.60	\$47.13	\$56.66	
3rd Year		\$39.40	\$49.66	\$59.92	
4th Year		\$42.34	\$54.07	\$65.80	
Ironworker					
Fence Erecting	IR-25-F		\$41.03	\$61.26	\$81.49 H H D H H H D D Y
	10/4/2007				
Glazing	IR-25-GZ1		\$48.48	\$72.64	\$96.65 H H D H H H D D Y
	2/7/2007				
Mesh Iron Work	IR-25-MR		\$42.25	\$60.43	\$78.60 H H D H D D D D N
	2/7/2007				

Official Request #: 435
 Requestor: TROY SCHOOL DISTRICT
 Project Description: CABINETRY
 Project Number: SMITH MIDDLE SCHOOL
 County: Oakland

Official Rate Schedule
 Every contractor and subcontractor shall keep posted on the construction site, in a conspicuous place, a copy of all prevailing wage and fringe benefit rates prescribed in a contract.

Official 2008 Prevailing Wage Rates for State Funded Projects

Issue Date: 3/26/2008

Contract must be awarded by: 6/24/2008

Page 5 of 22

Classification Name Description	Last Updated	Straight Hourly	Time and a Half	Double Time	Overtime Provision
Pre-engineered Metal Work	IR-25-PE-Z1-Z2 10/4/2007	\$40.94	\$51.62	\$62.29	H H H X X X X D Y
Apprentice Rates:					
1st level		\$23.36	\$28.54	\$33.72	
2nd level		\$24.63	\$30.32	\$36.02	
3rd level		\$25.92	\$32.13	\$38.35	
4th level		\$27.19	\$33.92	\$40.65	
5th level		\$28.47	\$35.72	\$42.97	
6th level		\$29.75	\$37.52	\$45.28	
Reinforced Iron Work	IR-25-RF 10/4/2007	\$48.78	\$72.95	\$97.11	H H D H D D D D N
Rigging Work	IR-25-RIG 10/4/2007	\$53.98	\$80.75	\$107.52	H H H H H H D N
Apprentice Rates:					
Level 1&2		\$30.11	\$44.83	\$59.56	
Level 3		\$32.79	\$48.86	\$64.92	
Level 4		\$35.46	\$52.86	\$70.26	
Level 5		\$38.15	\$56.90	\$75.64	
Level 6		\$40.82	\$60.90	\$80.98	
Decking	IR-25-SD 10/4/2007	\$46.40	\$69.32	\$92.23	H H D H H H D D Y
Structural, ornamental, conveyor, welder and pre-cast Apprentice rates apply to structural, conveyor, fence, glazing, reinforced, rigging, & siding decking	IR-25-STR 10/4/2007	\$54.11	\$80.88	\$107.65	H H D H H H D D Y
Apprentice Rates:					
Level 1		\$27.34	\$40.73	\$54.11	
Level 2		\$30.02	\$44.74	\$59.47	
Level 3		\$32.70	\$48.77	\$64.83	
Level 4		\$35.37	\$52.77	\$70.17	
Level 5		\$38.05	\$56.80	\$75.53	
Level 6		\$40.73	\$60.81	\$80.89	
Level 7		\$43.39	\$64.80	\$86.21	
Level 8		\$46.08	\$68.83	\$91.59	
Industrial Door erection & construction	IR-25-STR-D 2/8/2007	\$34.69	\$46.09	\$57.48	H H D H H H D D Y

Official Request #: 435
 Requestor: TROY SCHOOL DISTRICT
 Project Description: CABINETRY
 Project Number: SMITH MIDDLE SCHOOL
 County: Oakland

Official Rate Schedule
Every contractor and subcontractor shall keep posted on the construction site, in a conspicuous place, a copy of all prevailing wage and fringe benefit rates prescribed in a contract.

Official 2008 Prevailing Wage Rates for State Funded Projects

Issue Date: 3/26/2008

Contract must be awarded by: 6/24/2008

Page 6 of 22

Classification Name Description	Last Updated	Straight Hourly	Time and a Half	Double Time	Overtime Provision
Laborer					
Construction Laborer, Mason Tender, Carpenter Tender, Drywall Handler, Cement Finisher tender, concrete chute and concrete Bucket Handler, Concrete Laborer, Demolition Laborer	L1076-A-A 6/5/2007	\$37.62	\$53.35	\$69.07	H H D H D D D D Y
Apprentice Rates:					
	0-1,000 work hours	\$31.98	\$44.89	\$57.79	
	1,001-2,000 work hours	\$33.11	\$46.58	\$60.05	
	2,001-3,000 work hours	\$34.24	\$48.28	\$62.31	
	3,001-4,000 work hours	\$36.49	\$51.66	\$66.81	
Signal man (on sewer & caisson work); air,electric or gasoline tool operator (including concrete vibrator operator,acetylene torch & air hammer operator); scaffold builder, caisson worker	L1076-A-B 6/5/2007	\$37.88	\$53.74	\$69.59	H H D H D D D D Y
Lansing Burner, Blaster & Powder Man	L1076-A-C 6/5/2007	\$38.37	\$54.47	\$70.57	H H D H D D D D Y
Furnance battery heater tender, burning bar & oxy- acetylene gun, expediter man, top man and/or bottom man (blast furnace work)	L1076-A-D 6/5/2007	\$38.12	\$54.10	\$70.07	H H D H D D D D Y
Cleaner/ sweeper laborer, furniture laborer	L1076-A-E 6/5/2007	\$32.17	\$45.17	\$58.17	H H D H D D D D Y
Demolition Laborer	L1076-D 6/5/2007	\$37.62	\$53.35	\$69.07	H H D H D D D D Y
Plasterer Tender, Plastering Machine Operator	LPT-1 7/3/2007	\$39.00	\$55.42	\$71.83	H H D H D D D D N
Apprentice Rates:					
	0 - 1,000 hours	\$31.99	\$44.90	\$57.81	
	1,001 - 2,000 hours	\$33.11	\$46.58	\$60.05	
	2,001 - 3,000 hours	\$34.24	\$48.28	\$62.31	
	3,001 - 4,000 hours	\$36.49	\$51.66	\$66.81	

Official Request #: 435

Requestor: TROY SCHOOL DISTRICT

Project Description: CABINetry

Project Number: SMITH MIDDLE SCHOOL

County: Oakland

Official Rate Schedule

Every contractor and subcontractor shall keep posted on the construction site, in a conspicuous place, a copy of all prevailing wage and fringe benefit rates prescribed in a contract.

Official 2008 Prevailing Wage Rates for State Funded Projects

Issue Date: 3/26/2008

Contract must be awarded by: 6/24/2008

Page 7 of 22

<u>Classification</u>	Name	Description	Last Updated	Straight Hourly	Time and a Half	Double Time	Overtime Provision
-----------------------	------	-------------	--------------	-----------------	-----------------	-------------	--------------------

Laborer - Hazardous

Class A Laborer - performing work in conjunction with site preparation and other preliminary work prior to actual removal, handling, or containment of hazardous waste substances not requiring use of personal protective equipment required by state or federal regulations; or a laborer performing work in conjunction with the removal, handling, or containment of hazardous waste substances when used of personal protective equipment level "D" is required.	LHAZ-Z2-A		10/11/2007	\$37.62	\$53.35	\$69.07	H H H H H H H D Y
---	-----------	--	------------	---------	---------	---------	-------------------

Apprentice Rates:

0-1,000 work hours	\$31.98	\$44.89	\$57.79
1,001-2,000 work hours	\$33.11	\$46.58	\$60.05
2,001-3,000 work hours	\$34.24	\$48.28	\$62.31
3,001-4,000 work hours	\$36.49	\$51.66	\$66.81

Class B Laborer - performing work in conjunction with the removal, handling, or containment of hazardous waste substances when the use of personal protective equipment levels "A", "B" or "C" is required.	LHAZ-Z2-B		10/11/2007	\$38.62	\$54.85	\$71.07	H H H H H H H D Y
---	-----------	--	------------	---------	---------	---------	-------------------

Apprentice Rates:

0-1,000 work hours	\$32.74	\$46.03	\$59.31
1,001-2,000 work hours	\$33.91	\$47.78	\$61.65
2,001-3,000 work hours	\$35.09	\$49.56	\$64.01
3,001-4,000 work hours	\$37.44	\$53.08	\$68.71

Laborer Underground - Tunnel, Shaft & Caisson

Class I - Tunnel, shaft and caisson laborer, dump man, shanty man, hog house tender, testing man (on gas), and watchman.	LAUCT-Z1-1		9/6/2007	\$33.54	\$44.30	\$55.05	H H H H H H H D Y
--	------------	--	----------	---------	---------	---------	-------------------

Apprentice Rates:

0-1,000 work hours	\$28.70	\$37.04	\$45.37
1,001-2,000 work hours	\$29.67	\$38.49	\$47.31
2,001-3,000 work hours	\$30.64	\$39.95	\$49.25
3,001-4,000 work hours	\$32.57	\$42.85	\$53.11

Class II - Manhole, headwall, catch basin builder, bricklayer tender, mortar man, material mixer, fence erector, and guard rail builder.	LAUCT-Z1-2		9/6/2007	\$33.65	\$44.46	\$55.27	H H H H H H H D Y
--	------------	--	----------	---------	---------	---------	-------------------

Apprentice Rates:

0-1,000 work hours	\$28.79	\$37.17	\$45.55
1,001-2,000 work hours	\$29.76	\$38.74	\$47.71
2,001-3,000 work hours	\$30.73	\$40.09	\$49.43
3,001-4,000 work hours	\$32.68	\$43.01	\$53.33

Official Request #: 435
 Requestor: TROY SCHOOL DISTRICT
 Project Description: CABINetry
 Project Number: SMITH MIDDLE SCHOOL
 County: Oakland

Official Rate Schedule

Every contractor and subcontractor shall keep posted on the construction site, in a conspicuous place, a copy of all prevailing wage and fringe benefit rates prescribed in a contract.

Official 2008 Prevailing Wage Rates for State Funded Projects

Issue Date: 3/26/2008

Contract must be awarded by: 6/24/2008

Page 8 of 22

Classification Name Description	Last Updated	Straight Hourly	Time and a Half	Double Time	Overtime Provision
Class III - Air tool operator (jack hammer man, bush hammer man and grinding man), first bottom man, second bottom man, cage tender, car pusher, carrier man, concrete man, concrete form man, concrete repair man, cement invert laborer, cement finisher, concrete shoveler, conveyor man, floor man, gasoline and electric tool operator, gunnite man, grout operator, welder, heading dinky man, inside lock tender, pea gravel operator, pump man, outside lock tender, scaffold man, top signal man, switch man, track man, tugger man, utility man, vibrator man, winch operator, pipe jacking man, wagon drill and air track operator and concrete saw operator (under 40	LAUCT-Z1-3 9/6/2007	\$33.71	\$44.55	\$55.39	H H H H H H D Y

Apprentice Rates:

0-1,000 work hours	\$28.83	\$37.23	\$45.63
1,001-2,000 work hours	\$29.81	\$38.71	\$47.59
2,001-3,000 work hours	\$30.78	\$40.16	\$49.53
3,001-4,000 work hours	\$32.73	\$43.09	\$53.43

Class IV - Tunnel, shaft and caisson mucker, bracer man, liner plate man, long haul dinky driver and well point man.	LAUCT-Z1-4 9/6/2007	\$33.89	\$44.82	\$55.75	H H H H H H D Y
--	------------------------	---------	---------	---------	-----------------

Apprentice Rates:

0-1,000 work hours	\$28.97	\$37.45	\$45.91
1,001-2,000 work hours	\$29.95	\$38.91	\$47.87
2,001-3,000 work hours	\$30.94	\$40.40	\$49.85
3,001-4,000 work hours	\$32.91	\$43.35	\$53.79

Class V - Tunnel, shaft and caisson miner, drill runner, keyboard operator, power knife operator, reinforced steel or mesh man (e.g. wire mesh, steel mats, dowel bars)	LAUCT-Z1-5 9/6/2007	\$34.14	\$45.20	\$56.25	H H H H H H D Y
---	------------------------	---------	---------	---------	-----------------

Apprentice Rates:

0-1,000 work hours	\$29.16	\$37.73	\$46.29
1,001-2,000 work hours	\$30.15	\$39.21	\$48.27
2,001-3,000 work hours	\$31.15	\$40.71	\$50.27
3,001-4,000 work hours	\$33.14	\$43.70	\$54.25

Class VI - Dynamite man and powder man.	LAUCT-Z1-6 9/6/2007	\$34.47	\$45.69	\$56.91	H H H H H H D Y
---	------------------------	---------	---------	---------	-----------------

Apprentice Rates:

0-1,000 work hours	\$29.40	\$38.09	\$46.77
1,001-2,000 work hours	\$30.42	\$39.62	\$48.81
2,001-3,000 work hours	\$31.43	\$41.13	\$50.83
3,001-4,000 work hours	\$33.46	\$44.18	\$54.89

Official Request #: 435
 Requestor: TROY SCHOOL DISTRICT
 Project Description: CABINetry
 Project Number: SMITH MIDDLE SCHOOL
 County: Oakland

Official Rate Schedule

Every contractor and subcontractor shall keep posted on the construction site, in a conspicuous place, a copy of all prevailing wage and fringe benefit rates prescribed in a contract.

Official 2008 Prevailing Wage Rates for State Funded Projects

Issue Date: 3/26/2008

Contract must be awarded by: 6/24/2008

Page 9 of 22

<u>Classification</u>	Name	Description	Last Updated	Straight Hourly	Time and a Half	Double Time	Overtime Provision
=====							
Class VII - Restoration laborer, seeding, sodding, planting, cutting, mulching and topsoil grading and the restoration of property such as replacing mail boxes, wood chips, planter boxes and flagstones.	LAUCT-Z1-7		9/6/2007	\$27.75	\$35.61	\$43.47	H H H H H H H D Y

Apprentice Rates:

0-1,000 work hours	\$24.36	\$30.53	\$36.69
1,001-2,000 work hours	\$25.04	\$31.55	\$38.05
2,001-3,000 work hours	\$25.72	\$32.57	\$39.41
3,001-4,000 work hours	\$27.07	\$34.59	\$42.11

Landscape Laborer

Landscape Specialist includes air, gas, and diesel equipment operator, lawn sprinkler installer on landscaping work where seeding, sodding, planting, cutting, trimming, backfilling, rough grading or	LLAN-Z1-A		7/3/2007	\$24.38	\$33.81	\$43.24	X X H X X X H D Y
--	-----------	--	----------	---------	---------	---------	-------------------

All work pertaining to landscaping where seeding, sodding, planting, cutting, trimming, backfilling, rough grading or maintaining of landscape projects occurs which may include small power tool operator, lawn sprinkler installer helper, material mover, & truck driver.	LLAN-Z1-B		7/3/2007	\$20.16	\$27.48	\$34.80	X X H X X X H D Y
--	-----------	--	----------	---------	---------	---------	-------------------

Marble Finisher

Marble Finisher	TT32-MF		7/25/2007	\$39.57	\$49.90	\$60.23	H H D H D D D D N
-----------------	---------	--	-----------	---------	---------	---------	-------------------

Apprentice Rates:

Level 1	\$19.30	\$24.91	\$30.52
Level 2	\$20.40	\$26.56	\$32.72
Level 3	\$24.67	\$31.27	\$37.87
Level 4	\$26.01	\$33.28	\$40.55
Level 5	\$27.38	\$34.86	\$42.34
Level 6	\$28.85	\$36.70	\$44.56
Level 7	\$30.39	\$38.30	\$46.21
Level 8	\$31.75	\$39.92	\$48.09

Official Request #: 435

Requestor: TROY SCHOOL DISTRICT

Project Description: CABINETRY

Project Number: SMITH MIDDLE SCHOOL

County: Oakland

Official Rate Schedule

Every contractor and subcontractor shall keep posted on the construction site, in a conspicuous place, a copy of all prevailing wage and fringe benefit rates prescribed in a contract.

Official 2008 Prevailing Wage Rates for State Funded Projects

Issue Date: 3/26/2008

Contract must be awarded by: 6/24/2008

Page 10 of 22

<u>Classification</u> Name Description	Last Updated	Straight Hourly	Time and a Half	Double Time	Overtime Provision
Marble Mason					
Marble Mason	TT32-MM	\$45.76	\$59.19	\$72.61	H H D H D D D D N
	7/25/2007				
Apprentice Rates:					
Level 1		\$24.86	\$31.89	\$38.93	
Level 2		\$27.65	\$35.43	\$43.21	
Level 3		\$30.50	\$38.57	\$46.64	
Level 4		\$33.00	\$41.96	\$50.92	
Level 5		\$35.10	\$44.33	\$53.56	
Level 6		\$38.52	\$49.39	\$60.27	
Level 7		\$39.37	\$50.53	\$61.69	
Level 8		\$40.22	\$51.81	\$63.39	
Operating Engineer					
Crane with boom & jib or leads 120' or longer	EN-324-A120 6/5/2007	\$49.26	\$65.97	\$82.68	H H D H D D D D Y
Crane with boom & jib or leads 140' or longer	EN-324-A140 6/5/2007	\$50.08	\$67.20	\$84.32	H H D H D D D D Y
Crane with boom & jib or leads 220' or longer	EN-324-A220 6/5/2007	\$50.38	\$67.65	\$84.92	H H D H D D D D Y
Crane with boom & jib or leads 300' or longer	EN-324-A300 6/5/2007	\$51.88	\$69.90	\$87.92	H H D H D D D D Y
Crane with boom & jib or leads 400' or longer	EN-324-A400 6/5/2007	\$53.38	\$72.15	\$90.92	H H D H D D D D Y
Compressor or welding machine	EN-324-CW 6/5/2007	\$38.41	\$49.70	\$60.98	H H D H D D D D Y
Forklift, lull, extend-a-boom forklift	EN-324-FL 6/5/2007	\$45.72	\$60.66	\$75.60	H H D H D D D D Y
Fireman or oiler	EN-324-FO 6/5/2007	\$37.38	\$48.15	\$58.92	H H D H D D D D Y
Regular crane, job mechanic, concrete pump	EN-324-RC 6/5/2007	\$48.40	\$64.68	\$80.96	H H D H D D D D Y

Official Request #: 435
 Requestor: TROY SCHOOL DISTRICT
 Project Description: CABINETRY
 Project Number: SMITH MIDDLE SCHOOL
 County: Oakland

Official Rate Schedule
Every contractor and subcontractor shall keep posted on the construction site, in a conspicuous place, a copy of all prevailing wage and fringe benefit rates prescribed in a contract.

Official 2008 Prevailing Wage Rates for State Funded Projects

Issue Date: 3/26/2008

Contract must be awarded by: 6/24/2008

Page 11 of 22

<u>Classification</u>	Name	Description	Last Updated	Straight Hourly	Time and a Half	Double Time	Overtime Provision
	Regular engineer, hydro-excavator, remote controlled concrete breaker	EN-324-RE	6/5/2007	\$47.43	\$63.23	\$79.02	H H D H D D D D Y

Apprentice Rates:

Period 1	\$37.85	\$48.90	\$59.96
Period 2	\$39.43	\$51.28	\$63.12
Period 3	\$41.02	\$53.66	\$66.30
Period 4	\$42.59	\$56.01	\$69.44
Period 5	\$44.17	\$58.39	\$72.60
Period 6	\$45.76	\$60.77	\$75.78

Operating Engineer - Marine Construction

Diver/Wet Tender, Engineer (hydraulic dredge)	GLF-1	1/8/2008	\$51.76	\$67.91	\$84.06	X X H H H H H D Y
---	-------	----------	---------	---------	---------	-------------------

Holidays paid at \$100.21 per hour

Subdivision of county all Great Lakes, islands therein, & connecting & tributary waters

Crane/Backhoe Operator, Mechanic/Welder, Assistant Engineer (hydraulic dredge), Leverman (hydraulic dredge), Diver Tender	GLF-2	1/8/2008	\$50.26	\$65.66	\$81.06	X X H H H H H D Y
---	-------	----------	---------	---------	---------	-------------------

Holidays paid \$96.46 per hour

Subdivision of county All Great Lakes, islands therein, & connecting & tributary waters

Deck Equipment Operator, Machineryman, Maintenance of Crane (over 50 ton capacity) or Backhoe (115,000 lbs. or more), Tug/Launch Operator, Loader, Dozer and like equipment on Barge, Breakwater Wall, Slip/Doc or Scow, Deck Machinery	GLF-3	1/8/2008	\$46.91	\$60.64	\$74.36	X X H H H H H D Y
---	-------	----------	---------	---------	---------	-------------------

Holidays paid at \$88.08 per hour

Subdivision of county All Great Lakes, islands therein, & connecting & tributary waters

Deck Equipment Operator, (Machineryman/Fireman), (4 equipment units or more), Deck Hand, Deck Engineer, & Crane Maintenance 50 ton capacity and under or Backhoe weighing 115,000 lbs or less, Assistant Tug Operator	GLF-4	1/8/2008	\$42.26	\$53.66	\$65.06	X X H H H H H D Y
---	-------	----------	---------	---------	---------	-------------------

Holidays paid at \$76.46 per hour

Subdivision of county All Great Lakes, islands therein, & connecting & tributary waters

Official Request #: 435
 Requestor: TROY SCHOOL DISTRICT
 Project Description: CABINETRY

Project Number: SMITH MIDDLE SCHOOL
 County: Statewide

Official Rate Schedule

Every contractor and subcontractor shall keep posted on the construction site, in a conspicuous place, a copy of all prevailing wage and fringe benefit rates prescribed in a contract.

Official 2008 Prevailing Wage Rates for State Funded Projects

Issue Date: 3/26/2008

Contract must be awarded by: 6/24/2008

Page 12 of 22

Classification	Name	Description	Last Updated	Straight Hourly	Time and a Half	Double Time	Overtime Provision
----------------	------	-------------	--------------	-----------------	-----------------	-------------	--------------------

Operating Engineer Hazardous Waste Class I

Level A - Fully encapsulating chemical resistant suit w/ pressure demand, full face piece SCBA or pressure demand supplied air respirator w/ escape SCBA. The highest available level of respiratory, skin and eye	EN-324-HWCI-Z1A 3/20/2008	\$47.34	\$63.11	\$78.87	H H H H H H D Y
--	------------------------------	---------	---------	---------	-----------------

Apprentice Rates:

1st 6 months	\$37.78	\$48.81	\$59.85
2nd 6 months	\$39.36	\$51.19	\$63.01
3rd 6 months	\$40.94	\$53.56	\$66.17
4th 6 months	\$42.52	\$55.92	\$69.33
5th 6 months	\$44.09	\$58.28	\$72.47
6th 6 months	\$45.67	\$60.66	\$75.63

Level B & C protection. B - Pressure demand, full face SCBA or pressure demand supplied air respirator w/ escape SCBA w/chemical resistant clothing. C - Full face piece, air purifying canister-equipped respirator w/chemical resistant clothing.	EN-324-HWCI-Z1B 12/20/2006	\$46.39	\$61.68	\$76.97	H H H H H H D Y
---	-------------------------------	---------	---------	---------	-----------------

Apprentice Rates:

1st 6 months	\$37.11	\$47.82	\$58.51
2nd 6 months	\$38.64	\$50.11	\$61.57
3rd 6 months	\$40.17	\$52.40	\$64.63
4th 6 months	\$41.70	\$54.70	\$67.69
5th 6 months	\$43.23	\$57.00	\$70.75
6th 6 months	\$44.76	\$59.29	\$73.81

Level D - Coveralls, safety boots, glasses or chemical splash goggles and hard hats.	EN-324-HWCI-Z1D 3/24/2008	\$45.09	\$59.73	\$74.37	H H H H H H D Y
--	------------------------------	---------	---------	---------	-----------------

Apprentice Rates:

1st 6 months	\$36.20	\$46.45	\$56.69
2nd 6 months	\$37.68	\$48.67	\$59.65
3rd 6 months	\$39.14	\$50.86	\$62.57
4th 6 months	\$40.60	\$53.05	\$65.49
5th 6 months	\$42.06	\$55.23	\$68.41
6th 6 months	\$43.53	\$57.44	\$71.35

Official Request #: 435
 Requestor: TROY SCHOOL DISTRICT
 Project Description: CABINETRY

 Project Number: SMITH MIDDLE SCHOOL
 County: Oakland

Official Rate Schedule
Every contractor and subcontractor shall keep posted on the construction site, in a conspicuous place, a copy of all prevailing wage and fringe benefit rates prescribed in a contract.

Official 2008 Prevailing Wage Rates for State Funded Projects

Issue Date: 3/26/2008

Contract must be awarded by: 6/24/2008

Page 13 of 22

Classification Name Description	Last Updated	Straight Hourly	Time and a Half	Double Time	Overtime Provision
Level D When Capping Landfill Coveralls, safety boots, glasses or chemical splash goggles and hard hats.	EN-324-HWCII-Z1DCL 3/24/2008	\$44.84	\$59.36	\$73.87	H H H H H H D Y
Apprentice Rates:					
1st 6 months		\$36.03	\$46.19	\$56.35	
2nd 6 months		\$37.48	\$48.37	\$59.25	
3rd 6 months		\$38.93	\$50.54	\$62.15	
4th 6 months		\$40.38	\$52.72	\$65.05	
5th 6 months		\$41.84	\$54.91	\$67.97	
6th 6 months		\$43.29	\$57.08	\$70.87	
Operating Engineer Hazardous Waste Class II					
Level A - Fully encapsulating chemical resistant suit w/ pressure demand, full face piece SCBA or pressure demand supplied air respirator w/ escape SCBA. The highest available level of respiratory, skin and eye	EN-324-HWCII-Z1A 12/20/2006	\$43.11	\$56.76	\$70.41	H H H H H H D Y
Level B & C protection. B - Pressure demand, full face SCBA or pressure demand supplied air respirator w/ escape SCBA w/chemical resistant clothing. C - Full face piece, air purifying canister-equipped respirator w/chemical resistant clothing.	EN-324-HWCII-Z1B 3/24/2008	\$42.16	\$55.34	\$68.51	H H H H H H D Y
Level D - Coveralls, safety boots, glasses or chemical splash goggles and hard hats.	EN-324-HWCII-Z1D 3/24/2008	\$40.86	\$53.39	\$65.91	H H H H H H D Y
Level D When Capping Landfill Coveralls, safety boots, glasses or chemical splash goggles and hard hats.	EN-324-HWCII-Z1DCL 3/25/2008	\$40.61	\$53.01	\$65.41	H H H H H H D Y
Operating Engineer Hazardous Waste Crane w/ Boom & Jib leads 140' or longer					
Level A - Fully encapsulating chemical resistant suit w/ pressure demand, full face piece SCBA or pressure demand supplied air respirator w/ escape SCBA. The highest available level of respiratory, skin and eye	EN-324-HW140-Z1A 12/20/2006	\$49.99	\$67.08	\$84.17	H H H H H H D Y
Level B & C protection. B - Pressure demand, full face SCBA or pressure demand supplied air respirator w/ escape SCBA w/chemical resistant clothing. C - Full face piece, air purifying canister-equipped respirator w/chemical resistant clothing.	EN-324-HW140-Z1B 3/24/2008	\$49.04	\$65.66	\$82.27	H H H H H H D Y
Level D Coveralls, safety boots, glasses or chemical splash goggles and hard hats.	EN-324-HW140-Z1D 3/24/2008	\$47.74	\$63.71	\$79.67	H H H H H H D Y

Official Request #: 435
 Requestor: TROY SCHOOL DISTRICT
 Project Description: CABINetry
 Project Number: SMITH MIDDLE SCHOOL
 County: Oakland

Official Rate Schedule
 Every contractor and subcontractor shall keep posted on the construction site, in a conspicuous place, a copy of all prevailing wage and fringe benefit rates prescribed in a contract.

Official 2008 Prevailing Wage Rates for State Funded Projects

Issue Date: 3/26/2008

Contract must be awarded by: 6/24/2008

Page 14 of 22

Classification Name Description	Last Updated	Straight Hourly	Time and a Half	Double Time	Overtime Provision
Level D When Capping Landfill Coveralls, safety boots, glasses or chemical splash goggles and hard hats.	EN-324-HW140-Z1DCL 3/25/2008	\$47.49	\$63.33	\$79.17	H H H H H H H D Y
Operating Engineer Hazardous Waste Crane w/ Boom & Jib leads 220' or longer					
Level A - Fully encapsulating chemical resistant suit w/ pressure demand, full face piece SCBA or pressure demand supplied air respirator w/ escape SCBA. The highest available level of respiratory, skin and eye	EN-324-HW220-Z1A 12/20/2006	\$50.29	\$67.53	\$84.77	H H H H H H H D Y
Level B & C protection. B - Pressure demand, full face SCBA or pressure demand supplied air respirator w/ escape SCBA w/chemical resistant clothing. C - Full face piece, air purifying canister-equipped respirator w/chemical resistant clothing.	EN-324-HW220-Z1B 3/24/2008	\$49.34	\$66.11	\$82.87	H H H H H H H D Y
Level D Coveralls, safety boots, glasses or chemical splash goggles and hard hats.	EN-324-HW220-Z1D 3/24/2008	\$48.04	\$64.16	\$80.27	H H H H H H H D Y
Level D When Capping Landfill Coveralls, safety boots, glasses or chemical splash goggles and hard hats.	EN-324-HW220-Z1DCL 3/25/2008	\$47.79	\$63.78	\$79.77	H H H H H H H D Y
Operating Engineer Hazardous Waste Regular Crane, Job Mechanic, Dragline Operator, Boom Truck Operator, and Concrete Pump with Boom Operator					
Level D - Coveralls, safety boots, glasses or chemical splash goggles and hard hats.	EN-324-HWRC-Z1D 3/24/2008	\$46.06	\$61.19	\$76.31	H H H H H H H D Y
Operating Engineer Hazardous Waste Regular Crane, Job Mechanic, Dragline Operator, Boom Truck Operator, Power Shovel Operator and Concrete Pump with boom					
Level D When Capping Landfill Coveralls, safety boots, glasses or chemical splash goggles and hard hats.	EN-324-HWRC-Z1DCL 3/25/2008	\$45.19	\$59.88	\$74.57	H H H H H H H D Y
Operating Engineer Hazardous Waste Regular Crane, Job Mechanic, Dragline Operator, Boom Truck Operator, Power Shovel Operator and Concrete Pump with booms					
Level B & C protection. B - Pressure demand, full face SCBA or pressure demand supplied air respirator w/ escape SCBA w/chemical resistant clothing. C - Full face piece, air purifying canister-equipped respirator w/chemical resistant clothing.	EN-324-HWRC-Z1B 3/24/2008	\$47.36	\$63.14	\$78.91	H H H H H H H D Y

Official Request #: 435
 Requestor: TROY SCHOOL DISTRICT
 Project Description: CABINETRY
 Project Number: SMITH MIDDLE SCHOOL
 County: Oakland

Official Rate Schedule
 Every contractor and subcontractor shall keep posted on the construction site, in a conspicuous place, a copy of all prevailing wage and fringe benefit rates prescribed in a contract.

Official 2008 Prevailing Wage Rates for State Funded Projects

Issue Date: 3/26/2008

Contract must be awarded by: 6/24/2008

Page 15 of 22

Classification Name Description	Last Updated	Straight Hourly	Time and a Half	Double Time	Overtime Provision
Operating Engineer Hazardous Waste Regular Crane, Job Mechanic, Dragline Operator, Boom Truck Operator, Power Shovel Operators and Concrete Pump with booms					
Level A - Fully encapsulating chemical resistant suit w/ pressure demand, full face piece SCBA or pressure demand supplied air respirator w/ escape SCBA. The highest available level of respiratory, skin and eye	EN-324-HWRC-Z1A 12/20/2006	\$48.31	\$64.56	\$80.81	H H H H H H D Y
Operating Engineer Steel Work					
Crane w/ 120' boom or longer	EN-324-SW120 8/11/2006	\$51.51	\$69.80	\$88.08	H H D H H H D D Y
Crane w/ 120' boom or longer w/ Oiler	EN-324-SW120-O 8/11/2006	\$52.51	\$71.30	\$90.08	H H D H H H D D Y
Crane w/ 140' boom or longer	EN-324-SW140 8/11/2006	\$52.69	\$71.57	\$90.44	H H D H H H D D Y
Crane w/ 140' boom or longer W/ Oiler	EN-324-SW140-O 8/11/2006	\$53.69	\$73.07	\$92.44	H H D H H H D D Y
Boom & Jib 220' or longer	EN-324-SW220 8/11/2006	\$52.96	\$71.97	\$90.98	H H D H H H D D Y
Crane w/ 220' boom or longer w/ Oiler	EN-324-SW220-O 8/11/2006	\$53.96	\$73.47	\$92.98	H H D H H H D D Y
Boom & Jib 300' or longer	EN-324-SW300 8/11/2006	\$54.46	\$74.22	\$93.98	H H D H H H D D Y
Crane w/ 300' boom or longer w/ Oiler	EN-324-SW300-O 8/11/2006	\$55.46	\$75.72	\$95.98	H H D H H H D D Y
Boom & Jib 400' or longer	EN-324-SW400 8/11/2006	\$55.96	\$76.47	\$96.98	H H D H H H D D Y
Crane w/ 400' boom or longer w/ Oiler	EN-324-SW400-O 8/11/2006	\$56.96	\$77.97	\$98.98	H H D H H H D D Y
Crane Operator & Job Mechanic	EN-324-SWCO 8/11/2006	\$51.15	\$69.26	\$87.36	H H D H H H D D Y

Apprentice Rates:

0-999 hours	\$40.04	\$52.72	\$65.39
1,000-1,999 hours	\$41.85	\$55.43	\$69.01
2,000-2,999 hours	\$43.66	\$58.14	\$72.63
3,000-3,999 hours	\$45.48	\$60.88	\$76.27
4,000-4,999 hours	\$47.28	\$63.58	\$79.87
5,000 hours	\$49.10	\$66.31	\$83.51

Official Request #: 435
 Requestor: TROY SCHOOL DISTRICT
 Project Description: CABINETRY
 Project Number: SMITH MIDDLE SCHOOL
 County: Oakland

Official Rate Schedule

Every contractor and subcontractor shall keep posted on the construction site, in a conspicuous place, a copy of all prevailing wage and fringe benefit rates prescribed in a contract.

Official 2008 Prevailing Wage Rates for State Funded Projects

Issue Date: 3/26/2008

Contract must be awarded by: 6/24/2008

Page 16 of 22

Classification Name Description	Last Updated	Straight Hourly	Time and a Half	Double Time	Overtime Provision
Crane w/ Oiler	EN-324-SWCO-O 8/11/2006	\$52.15	\$70.76	\$89.36	H H D H H H D D Y
Compressor or Welder Operator	EN-324-SWCW 8/11/2006	\$43.70	\$58.08	\$72.46	H H D H H H D D Y
Hoisting Operator	EN-324-SWHO 8/11/2006	\$50.51	\$68.30	\$86.08	H H D H H H D D Y
Oiler	EN-324-SWO 8/11/2006	\$42.29	\$55.97	\$69.64	H H D H H H D D Y
Tower Crane & Derrick where work is 50' or more above first level	EN-324-SWTD50 8/11/2006	\$52.24	\$70.89	\$89.54	H H D H H H D D Y
Tower Crane & Derrick 50' or more w/ Oiler where work station is 50' or more above first level	EN-324-SWTD50-O 8/11/2006	\$53.24	\$72.39	\$91.54	H H D H H H D D Y
Operating Engineer Underground					
Class I Equipment	EN-324A1-UC1 10/8/2007	\$44.84	\$59.33	\$73.82	H H H H H H H D Y
Apprentice Rates:					
0-999 hours	\$36.05	\$46.20	\$56.34		
1,000-1,999 hours	\$37.50	\$48.37	\$59.24		
2,000-2,999 hours	\$38.94	\$50.53	\$62.12		
3,000-3,999 hours	\$40.39	\$52.71	\$65.02		
4,000-4,999 hours	\$41.84	\$54.88	\$67.92		
5,000-5,999 hours	\$43.29	\$57.06	\$70.82		
Class II Equipment	EN-324A1-UC2 10/8/2007	\$40.11	\$52.24	\$64.36	H H H H H H H D Y
Class III Equipment	EN-324A1-UC3 10/8/2007	\$39.38	\$51.14	\$62.90	H H H H H H H D Y
Class IV Equipment	EN-324A1-UC4 10/8/2007	\$38.81	\$50.29	\$61.76	H H H H H H H D Y
Master Mechanic	EN-324A1-UMM 10/8/2007	\$45.09	\$59.71	\$74.32	H H H H H H H D Y

Official Request #: 435
 Requestor: TROY SCHOOL DISTRICT
 Project Description: CABINetry
 Project Number: SMITH MIDDLE SCHOOL
 County: Oakland

Official Rate Schedule
 Every contractor and subcontractor shall keep posted on the construction site, in a conspicuous place, a copy of all prevailing wage and fringe benefit rates prescribed in a contract.

Official 2008 Prevailing Wage Rates for State Funded Projects

Issue Date: 3/26/2008

Contract must be awarded by: 6/24/2008

Page 17 of 22

<u>Classification</u>	Name	Description	Last Updated	Straight Hourly	Time and a Half	Double Time	Overtime Provision
-----------------------	------	-------------	--------------	-----------------	-----------------	-------------	--------------------

Painter

Painter (8 hours of repaint work performed on Sunday shall be paid time & one half rate)	PT-22-P		5/26/2006	\$38.01	\$50.24	\$62.47	H H D H D D D D N
--	---------	--	-----------	---------	---------	---------	-------------------

Apprentice Rates:

First 6 months	\$25.78	\$31.89	\$38.01
Second 6 months	\$29.45	\$37.40	\$45.35
Third 6 months	\$30.67	\$39.23	\$47.79
Fourth 6 months	\$31.89	\$41.06	\$50.23
Fifth 6 months	\$33.12	\$42.91	\$52.69
Final 6 months	\$34.34	\$44.73	\$55.13

Sandblasting & spraywork performed, on highway bridges, overpasses, tanks or steel, OR spraywork & sandblasting done with a scaffold height of 40' above the floor level	PT-22-S		6/1/2006	\$38.81	\$51.44	\$64.07	H H D H D D D D N
--	---------	--	----------	---------	---------	---------	-------------------

Pipefitter

Pipefitter	PF-636		6/1/2007	\$55.06	\$74.14	\$89.96	H H D H D D D D N
------------	--------	--	----------	---------	---------	---------	-------------------

Apprentice Rates:

1st & 2nd periods	\$26.28	\$34.63	\$41.63
3rd period	\$28.28	\$37.63	\$45.63
4th period	\$29.53	\$39.51	\$48.13
5th period	\$30.78	\$41.38	\$50.63
6th period	\$32.03	\$43.25	\$53.13
7th period	\$33.28	\$45.13	\$55.63
8th period	\$34.28	\$46.63	\$57.63
9th period	\$35.28	\$48.13	\$59.63
10th period	\$36.71	\$50.27	\$62.49

Plasterer

Plasterer	BR1P		12/19/2007	\$42.89	\$64.34	\$85.78	H H H H H H D N
-----------	------	--	------------	---------	---------	---------	-----------------

Apprentice Rates:

1st 6 months	\$21.97	\$32.96	\$43.94
2nd 6 months	\$25.46	\$38.19	\$50.92
3rd 6 months	\$28.95	\$43.42	\$57.90
4th 6 months	\$32.43	\$48.65	\$64.86
5th 6 months	\$35.92	\$53.88	\$71.84
6th 6 months	\$39.40	\$59.10	\$78.80

Official Request #: 435
 Requestor: TROY SCHOOL DISTRICT
 Project Description: CABINETRY
 Project Number: SMITH MIDDLE SCHOOL
 County: Oakland

Official Rate Schedule
 Every contractor and subcontractor shall keep posted on the construction site, in a conspicuous place, a copy of all prevailing wage and fringe benefit rates prescribed in a contract.

Official 2008 Prevailing Wage Rates for State Funded Projects

Issue Date: 3/26/2008

Contract must be awarded by: 6/24/2008

Page 18 of 22

Classification Name Description	Last Updated	Straight Hourly	Time and a Half	Double Time	Overtime Provision
Plasterer	PL67	\$42.87	\$58.16	\$73.45	H H H X D D D D N

6/4/2007

Apprentice Rates:

1st 6 months	\$24.52	\$30.63	\$36.75
2nd 6 months	\$27.58	\$35.23	\$42.87
3rd 6 months	\$30.64	\$39.81	\$48.99
4th 6 months	\$33.70	\$44.41	\$55.11
5th 6 months	\$36.75	\$48.98	\$61.21
6th 6 months	\$39.81	\$53.57	\$67.33

Plumber

Plumber	PL-98	\$53.68	\$71.45	\$87.21	H H D H D D D D Y
---------	-------	---------	---------	---------	-------------------

6/20/2007

Apprentice Rates:

Period 1	\$17.11	\$23.41	\$29.71
Period 2	\$17.11	\$23.41	\$29.71
Period 3	\$26.78	\$35.13	\$43.47
Period 4	\$27.41	\$36.07	\$44.73
Period 5	\$28.57	\$37.81	\$47.05
Period 6	\$29.72	\$39.53	\$49.35
Period 7	\$30.87	\$41.26	\$51.65
Period 8	\$32.04	\$43.01	\$53.99
Period 9	\$33.19	\$44.74	\$56.29
Period 10	\$34.35	\$46.48	\$58.61

Roofer

Commercial Roofer	RO-149-WOM	\$46.81	\$60.92	\$75.02	H H D H H H D D N
-------------------	------------	---------	---------	---------	-------------------

Straight time is not to exceed ten (10) hours per day or forty (40) hours per week.

9/4/2007

Apprentice Rates:

Apprentice 1	\$30.97	\$39.16	\$47.34
Apprentice 2	\$35.15	\$43.42	\$51.70
Apprentice 3	\$36.57	\$45.56	\$54.54
Apprentice 4	\$37.60	\$47.10	\$56.60
Apprentice 5	\$38.82	\$48.93	\$59.04
Apprentice 6	\$40.22	\$51.03	\$61.84

Official Request #: 435
 Requestor: TROY SCHOOL DISTRICT
 Project Description: CABINetry
 Project Number: SMITH MIDDLE SCHOOL
 County: Oakland

Official Rate Schedule
 Every contractor and subcontractor shall keep posted on the construction site, in a conspicuous place, a copy of all prevailing wage and fringe benefit rates prescribed in a contract.

Official 2008 Prevailing Wage Rates for State Funded Projects

Issue Date: 3/26/2008

Contract must be awarded by: 6/24/2008

Page 19 of 22

Classification Name Description	Last Updated	Straight Hourly	Time and a Half	Double Time	Overtime Provision
Sheet Metal Worker					
Sheet Metal Worker	SHM-80	\$55.37	\$73.66	\$91.95	H H D H D D D D Y
	10/2/2007				
Apprentice Rates:					
First Year		\$36.96	\$46.34	\$55.71	
Second Year		\$38.37	\$48.45	\$58.53	
Third Year		\$39.80	\$50.60	\$61.39	
Fourth Year		\$42.65	\$54.87	\$67.09	
Fifth Year		\$45.52	\$59.18	\$72.83	
Siding & Decking					
Siding & Decking	SHM-80-SD	\$37.10	\$49.16	\$61.22	H H H H H H H D Y
	10/1/2007				
Sprinkler Fitter					
Sprinkler Fitter	SP 704	\$55.92	\$75.26	\$94.60	H H D H D D D D Y
	12/5/2007				
Apprentice Rates:					
1st Period		\$22.82	\$30.55	\$38.29	
2nd Period		\$34.65	\$43.36	\$52.06	
3rd Period		\$36.58	\$46.25	\$55.92	
4th Period		\$38.51	\$49.14	\$59.78	
5th Period		\$40.45	\$52.06	\$63.66	
6th Period		\$42.38	\$54.95	\$67.52	
7th Period		\$44.32	\$57.86	\$71.40	
8th Period		\$46.25	\$60.76	\$75.26	
9th Period		\$48.18	\$63.65	\$79.12	
10th Period		\$50.12	\$66.56	\$83.00	
Terrazzo					
Terrazzo Finisher	TT32-TRF	\$39.97	\$50.50	\$61.03	H H D H D D D D N
	7/25/2007				
Apprentice Rates:					
Level 1		\$20.29	\$26.40	\$32.50	
Level 2		\$21.00	\$27.46	\$33.92	
Level 3		\$24.60	\$31.17	\$37.73	
Level 4		\$25.94	\$33.17	\$40.41	
Level 5		\$27.31	\$34.76	\$42.20	
Level 6		\$28.78	\$36.40	\$44.02	
Level 7		\$30.32	\$38.32	\$46.32	
Level 8		\$31.68	\$39.94	\$48.20	

Official Request #: 435
 Requestor: TROY SCHOOL DISTRICT
 Project Description: CABINETRY
 Project Number: SMITH MIDDLE SCHOOL
 County: Oakland

Official Rate Schedule
 Every contractor and subcontractor shall keep posted on the construction site, in a conspicuous place, a copy of all prevailing wage and fringe benefit rates prescribed in a contract.

Official 2008 Prevailing Wage Rates for State Funded Projects

Issue Date: 3/26/2008

Contract must be awarded by: 6/24/2008

Page 20 of 22

Classification	Name	Description	Last Updated	Straight Hourly	Time and a Half	Double Time	Overtime Provision
----------------	------	-------------	--------------	-----------------	-----------------	-------------	--------------------

Terrazzo Worker	TT32-TRW			\$45.29	\$58.48	\$71.67	H H D H D D D D N
-----------------	----------	--	--	---------	---------	---------	-------------------

7/25/2007

Apprentice Rates:

Level 1	\$24.76	\$31.75	\$38.73
Level 2	\$27.55	\$35.28	\$43.01
Level 3	\$30.40	\$38.42	\$46.44
Level 4	\$32.90	\$41.81	\$50.72
Level 5	\$35.00	\$44.31	\$53.61
Level 6	\$38.34	\$49.13	\$59.91
Level 7	\$39.44	\$50.63	\$61.83
Level 8	\$40.29	\$51.91	\$63.53

Tile

Tile Finisher	TT32-TF			\$39.59	\$49.93	\$60.27	H H D H D D D D N
---------------	---------	--	--	---------	---------	---------	-------------------

7/25/2007

Apprentice Rates:

Level 1	\$19.20	\$24.76	\$30.32
Level 2	\$20.30	\$26.41	\$32.52
Level 3	\$24.57	\$31.12	\$37.67
Level 4	\$25.91	\$33.13	\$40.35
Level 5	\$27.28	\$34.71	\$42.14
Level 6	\$28.75	\$36.56	\$44.36
Level 7	\$30.29	\$38.15	\$46.01
Level 8	\$31.65	\$39.77	\$47.89

Tile Layer	TT32-TL			\$45.19	\$58.33	\$71.47	H H D H D D D D N
------------	---------	--	--	---------	---------	---------	-------------------

7/25/2007

Apprentice Rates:

Level 1	\$24.76	\$31.75	\$38.73
Level 2	\$27.55	\$35.28	\$43.01
Level 3	\$30.40	\$38.42	\$46.44
Level 4	\$32.90	\$41.81	\$50.72
Level 5	\$34.95	\$44.10	\$53.26
Level 6	\$38.29	\$49.05	\$59.81
Level 7	\$38.89	\$49.81	\$60.73
Level 8	\$39.74	\$51.09	\$62.43

Truck Driver

on all trucks of 8 cubic yard capacity or less	TM-RB1			\$34.76	\$36.44		H H H H H H H H Y
--	--------	--	--	---------	---------	--	-------------------

7/24/2007

of all trucks of 8 cubic yard capacity or over	TM-RB1A			\$34.86	\$36.59		H H H H H H H H Y
--	---------	--	--	---------	---------	--	-------------------

7/24/2007

on euclid type equipment	TM-RB1B			\$35.01	\$36.81		H H H H H H H H Y
--------------------------	---------	--	--	---------	---------	--	-------------------

7/24/2007

Official Request #: 435
 Requestor: TROY SCHOOL DISTRICT
 Project Description: CABINETRY
 Project Number: SMITH MIDDLE SCHOOL
 County: Oakland

Official Rate Schedule
Every contractor and subcontractor shall keep posted on the construction site, in a conspicuous place, a copy of all prevailing wage and fringe benefit rates prescribed in a contract.

Official 2008 Prevailing Wage Rates for State Funded Projects

Issue Date: 3/26/2008

Contract must be awarded by: 6/24/2008

Page 21 of 22

Classification Name Description	Last Updated	Straight Hourly	Time and a Half	Double Time	Overtime Provision
Underground Laborer Open Cut, Class I					
Construction Laborer	LAUC-Z1-1	\$33.39	\$44.07	\$54.75	H H H H H H D Y
	9/6/2007				
Apprentice Rates:					
0-1,000 work hours	\$28.59	\$36.87	\$45.15		
1,001-2,000 work hours	\$29.55	\$38.31	\$47.07		
2,001-3,000 work hours	\$30.51	\$39.75	\$48.99		
3,001-4,000 work hours	\$32.43	\$42.63	\$52.83		
Underground Laborer Open Cut, Class II					
Mortar and material mixer, concrete form man, signal man, well point man, manhole, headwall and catch basin builder, guard rail builders, headwall, seawall, breakwall, dock builder and fence erector.	LAUC-Z1-2	\$33.50	\$44.24	\$54.97	H H H H H H D Y
	9/6/2007				
Apprentice Rates:					
0-1,000 work hours	\$28.68	\$37.01	\$45.33		
1,001-2,000 work hours	\$29.64	\$38.45	\$47.25		
2,001-3,000 work hours	\$30.60	\$39.89	\$49.17		
3,001-4,000 work hours	\$32.54	\$42.80	\$53.05		
Underground Laborer Open Cut, Class III					
Air, gasoline and electric tool operator, vibrator operator, drillers, pump man, tar kettle operator, bracers, rodder, reinforced steel or mesh man (e.g. wire mesh, steel mats, dowel bars, etc.), cement finisher, welder, pipe jacking and boring man, wagon drill and air track operator and concrete saw operator (under 40 h.p.), windlass and tugger man, and directional boring man.	LAUC-Z1-3	\$33.55	\$44.31	\$55.07	H H H H H H D Y
	9/6/2007				
Apprentice Rates:					
0-1,000 work hours	\$28.71	\$37.05	\$45.39		
1,001-2,000 work hours	\$29.68	\$38.51	\$47.33		
2,001-3,000 work hours	\$30.65	\$39.97	\$49.27		
3,001-4,000 work hours	\$32.58	\$42.86	\$53.13		
Underground Laborer Open Cut, Class IV					
Trench or excavating grade man.	LAUC-Z1-4	\$33.63	\$44.43	\$55.23	H H H H H H D Y
	9/6/2007				
Apprentice Rates:					
0-1,000 work hours	\$28.77	\$37.15	\$45.51		
1,001-2,000 work hours	\$29.74	\$38.60	\$47.45		
2,001-3,000 work hours	\$30.72	\$40.07	\$49.41		
3,001-4,000 work hours	\$32.66	\$42.98	\$53.29		

Official Request #: 435
 Requestor: TROY SCHOOL DISTRICT
 Project Description: CABINETRY
 Project Number: SMITH MIDDLE SCHOOL
 County: Oakland

Official Rate Schedule
 Every contractor and subcontractor shall keep posted on the construction site, in a conspicuous place, a copy of all prevailing wage and fringe benefit rates prescribed in a contract.

Official 2008 Prevailing Wage Rates for State Funded Projects

Issue Date: 3/26/2008

Contract must be awarded by: 6/24/2008

Page 22 of 22

<u>Classification</u>	Name	Description	Last Updated	Straight Hourly	Time and a Half	Double Time	Overtime Provision
Underground Laborer Open Cut, Class V							
	Pipe Layer		LAUC-Z1-5 9/6/2007	\$33.69	\$44.52	\$55.35	H H H H H H D Y
Apprentice Rates:							
		0-1,000 work hours	\$28.82	\$37.22	\$45.61		
		1,001-2,000 work hours	\$29.79	\$38.67	\$47.55		
		2,001-3,000 work hours	\$30.77	\$40.15	\$49.51		
		3,001-4,000 work hours	\$32.72	\$43.07	\$53.41		
Underground Laborer Open Cut, Class VI							
	Grouting man, top man assistant, audio visual television operations and all other operations in connection with closed circuit television inspection, pipe cleaning and pipe relining work and the installation and repair of water service pipe and appurtenances.		LAUC-Z1-6 9/6/2007	\$31.14	\$40.70	\$50.25	H H H H H H D Y
Apprentice Rates:							
		0-1,000 work hours	\$26.90	\$34.34	\$41.77		
		1,001-2,000 work hours	\$27.75	\$35.61	\$43.47		
		2,001-3,000 work hours	\$28.60	\$36.89	\$45.17		
		3,001-4,000 work hours	\$30.29	\$39.43	\$48.55		
Underground Laborer Open Cut, Class VII							
	Restoration laborer, seeding, sodding, planting, cutting, mulching and topsoil grading and the restoration of property such as replacing mail boxes, wood chips, planter boxes, flagstones etc.		LAUC-Z1-7 9/6/2007	\$27.76	\$35.63	\$43.49	H H H H H H D Y
Apprentice Rates:							
		0-1,000 work hours	\$24.37	\$30.55	\$36.71		
		1,001-2,000 work hours	\$25.05	\$31.57	\$38.07		
		2,001-3,000 work hours	\$25.73	\$32.59	\$39.43		
		3,001-4,000 work hours	\$27.08	\$34.61	\$42.13		

Official Request #: 435
 Requestor: TROY SCHOOL DISTRICT
 Project Description: CABINENTRY
 Project Number: SMITH MIDDLE SCHOOL
 County: Oakland

Official Rate Schedule
 Every contractor and subcontractor shall keep posted on the construction site, in a conspicuous place, a copy of all prevailing wage and fringe benefit rates prescribed in a contract.

**TROY SCHOOL DISTRICT
 BID# 9509
 SMITH CABINETRY**

	Flairwood Industries, Inc	L.A. Drouillard & Sons
Cabinets	\$ 1,996.00	\$ 4,190.00
Installation	880.00	420.00
Freight	400.00	-
Other	<u>128.00</u>	<u>240.00</u>
	\$ 3,404.00	\$ 4,850.00

Architect Millwork Specialists - No Response
 Aria Custom Cabinetry - No Response
 Greenfield Cabinetry - No Response
 K&D Innovations - No Response
 Leutz Cabinets -No Response
 Maplewood Custom Millwork - No Response
 Morrcraft Woodworking - No Response
 North Oakland Trim - No Response
 Real Face Cabinetry - No Response
 Rich Wall Custom Cabinet - No response
 Walbridge Woodworks - No Response
 Willow Woodworking - No Response