

REQUEST FOR QUOTATION	<h1>TROY SCHOOL DISTRICT</h1> <p>1140 RANKIN, TROY, MICHIGAN 48083</p> <p>248-823-4052</p> <p>FAX: 248-823-4077</p>	
No. 9641		
DUE DATE NO LATER THAN 11/2/09 3 p.m.		DATE 10/19/09

REQUEST FOR QUOTE - NOT AN ORDER

THIS FORM MUST BE UTILIZED WHEN RESPONDING TO THIS REQUEST
BID ENVELOPE ENCLOSED

THE RFQ NUMBER MUST APPEAR ON ALL QUOTATIONS AND RELATED CORRESPONDENCE, THIS IS NOT AN ORDER

Quantity	DESCRIPTION	UNIT PRICE	AMOUNT
	<p>Please supply us with your bid to furnish the Troy School District with FURNITURE AT INTERNATIONAL ACADEMY EAST</p> <p style="text-align: center;">Copies of the bid are available at:</p> <p style="text-align: center;">www.troy.k12.mi.us/purchasing/items_out_for_bid.htm (left column)</p> <p style="text-align: center;">Bid recaps will be available at:</p> <p style="text-align: center;">www.troy.k12.mi.us/purchasing/items_out_for_bid.htm (right column)</p> <p><i>FACSIMILE BID IS NOT ACCEPTABLE</i></p> <p>Bids will not be accepted if submitted after the deadline specified (local time) in the advertisement to bid or in the information to bidders. The late submission of a bid makes the bid nonrepsonsive and is a material defect which shall not be waived by the Board of Education. Delays in the mail will not be considered. All Late bids in the mail will be returned to the bidder unopened.</p> <p>Proposal for the submission of alternatives by vendors will be accepted and reviewed. However, if any substitution or departure is not clearly noted and described, it will be understood that the bid intends to exactly meet the specifications.</p> <p>The Board of Education shall be the sole judge as to whether the proposed goods are "equal" or "approved". Quotations must be mailed or delivered to the Purchasing Office, 1140 Rankin, Troy, MI 48083 no later than 3 p.m. on the date shown above. Michigan State Sales and Use Taxes and Federal Excise Taxes do not apply unless otherwise indicated. Exemption certificates will be furnished when necessary. This request imposes no obligations on the buyer. The Board of Education reserves the right to accept or reject any or all bids or to split awards by items or to accept bids, which will best serve the Board of Education.</p>		

THIS AREA MUST BE FILLED IN

DELIVERY TIME	PRICES FIRM FOR	NAME OF COMPANY	TELEPHONE NO.
TERMS		NO. & STREET	FAX #
FOB DELIVERED	ALL DELIVERY CHARGES MUST BE INCLUDED IN PRICES SHOWN	CITY, STATE & ZIP CODE	E-MAIL
CONTACT PERSON (PLEASE PRINT)		SIGNATURE	DATE

Note: All bidders are specifically reminded that a completed Affidavit of Bidder (Familial Disclosure) MUST be completed and submitted with the bid response. Failure to include a completed copy will be grounds for disqualification of bid. The Affidavit of Bidder is required to be notarized for construction bids only. All others only require completion and signature.

AFFIDAVIT OF BIDDER

The undersigned, the owner or authorized officer of _____ (the "Bidder), pursuant to the familial disclosure requirement provided in the _____ (the "School District") advertisement for construction bids, hereby represent and warrant except as provided below, that no familial relationships exist between the over(s) or any employee of _____ and any member of the Board of Education of the School District or the Superintendent of the School District.

List any Familial Relationships:

BIDDER:

By: _____

Its: _____

STATE OF MICHIGAN)
)ss.
COUNTY OF _____)

This instrument was acknowledged before me on the _____ day of _____, 2009, by _____.

,Notary Public

_____ County, Michigan

My Commission Expires: _____

Acting in the County of: _____

**TROY SCHOOL DISTRICT
FURNITURE – INTERNATIONAL ACADEMY EAST
BID 9641**

The Troy School District is seeking qualified bids for various furniture to be placed at International Academy East. The following points are integral to this bid. Respondents not adhering to these parameters are subject to disqualification.

- Bidding of complete package is not required, though highly recommended. The District would PREFER to award to one vendor to ease delivery, installation, etc.
- All responses will be regarded as bid to specification unless **SPECIFICALLY** indicated on bid response. Any alternates being proposed **MUST** include complete cut sheet. Failure to include cut sheet with bid submission will be grounds for disqualification of entire bid.
- All bidders **MUST** complete the enclosed Familial Disclosure form and include with bid submission. Bids not containing this form will be automatically disqualified. The Familial Disclosure form is **NOT** required to be notarized for non-construction bids.
- Bidders are reminded that all furniture listed on this bid will require installation by the awarded vendor. Bids for items where vendor does not provide complete installation will be deemed incomplete and will be disqualified.
- Installation includes unloading from shipping vehicle, unpacking and placing into designated room. Any assembly is the sole responsibility of the awarded vendor.
- School personnel will not assist with unloading, unpacking, assembly or cleanup of items or packing materials.
- Awarded vendors are completely responsible for cleanup and removal of all packing materials. The school district will **NOT** provide dumpster space for packaging materials.
- School does not have loading docks, pallet lifts or forklifts. Bidders are specifically reminded that all unloading of purchased items is the sole responsibility of awarded vendor.
- Awarded vendors **MUST** coordinate with shipper to insure that all delivered products are installed **DAY OF DELIVERY**. Schools do **NOT** have storage space available for product.
- Minimum of 48 hours notice is required prior to the delivery of any items awarded on this bid.
- Delivery may be made from 7:30 am until 2:00 pm, Monday through Friday.
- To avoid interruption of classes, all items on this bid must be delivered and installed during one of the periods indicated below:
 - December 21 thru December 24, 2009
 - December 28 thru December 31, 2009
 - February 15 thru February 16, 2010

Schools may be accessible after 2:00pm on these days provided awarded vendor provides minimum one week notice prior to commencing installation.

- Bid prices are requested on a **PER UNIT BASIS**. Unit cost for delivery and installation are to be included on bid response. Quantities listed below are **MINIMUM** quantities to be ordered for. The district reserves the right to order additional quantities **PER these BUILDINGS and/or other district owned locations**. Bidders must specify the length of time they will hold pricing. The district will consider the timeline vendors will hold pricing when determining bid award.

- **Delivery address:**

**International Academy East
1291 Torpey
Troy, MI 48083**

Troy School District
Furniture - International Academy East
Bid 9641

Tag	Mfg	Part #	Part Description	Building	Qty	Alt	Unit Cost
			MAIN OFFICE				
1-A		NCI	90 Degree Baseraill Cover	AREA 1	1		
1-B	HON	19723R	Flagship Series Pedestal "R" Pull Freestanding B/B	AREA 1	2		
		.Q	PAINT: Light Gray				
1-C	HON	19823R	Flagship Series Pedestal "R" Pull Freestanding F/F	AREA 1	2		
		.Q	PAINT: Light Gray				
1-D	HON	NRW42	Raceway Wall Starter 42H	AREA 1	2		
		.Q	PAINT: Light Gray				
1-E	HON	NEP2429	End Panel Non-Handed 24D 29H	AREA 1	2		
		.Q	PAINT: Light Gray				
1-F	HON	9173R	30W 3-Drawer "R" Pull Lateral 30W 39-1/8H 18D	AREA 1	1		
		.Q	PAINT: Light Gray				
1-G	HON	9170R	30W 2-Drawer "R" Pull Lateral 30W 28H 18D	AREA 1	2		
		.Q	PAINT: Light Gray				
1-H	HON	919460	60W 18D Square Edge Laminate Top For Lateral File	AREA 1	1		
		.Q	Lam: Light Grey				
1-I	HON	919430	30W 18D Square Edge Laminate Top For Lateral File	AREA 1	1		
		.Q	Lam: Light Grey				
1-J	HON	HKB900	Maestro Keyboard	AREA 1	2		
		.P	Color: Black				
1-K	HON	NWT66	66H Wall Track	AREA 1	2		
		.Q	PAINT: Light Gray				
1-L	HON	38242N	60x36-1/4H Stack-on Full Clearance w/o Doors	AREA 1	1		
		.Q	PAINT: Light Gray				
1-M	HON	38247	2 30"W x 16"H Flipper Doors w/Lock For 60"W Stack-on	AREA 1	1		
		.Q	PAINT: Light Gray				
1-N	HON	NDSL29	Shared Leg	AREA 1	2		
		.Q	PAINT: Light Gray				
1-O	HON	NDSP29	Support Leg, non-handed, 29 1/2"H	AREA 1	1		
		.Q	PAINT: Light Gray				
1-P	HON	NREC	Panel Raceway End Cover	AREA 1	1		

Troy School District

Furniture - International Academy East

Bid 9641

Tag	Mfg	Part #	Part Description	Building	Qty	Alt	Unit Cost
		.Q	PAINT: Light Gray				
1-Q	HON	NRC42	Universal Connector 42H	AREA 1	1		
		.Q	PAINT: Light Gray				
1-R	HON	NWV93AARP	72" x 36" x 24" x 24" Right Corner Cove Worksurfac	AREA 1	1		
		.K1	LAM: Shadow Zephyr				
		.Q	EDGE: Light Gray				
1-S	HON	NCS1572P	3 MM COUNTERTOP 72W X 15D	AREA 1	2		
		.K1	LAM: Shadow Zephyr				
		.Q	EDGE: Light Gray				
1-T	HON	NWV93AALP	72" x 36" x 24" x 24" Left Corner Cove Worksurface	AREA 1	1		
		.K1	LAM: Shadow Zephyr				
		.Q	EDGE: Light Gray				
1-U	HON	NWR2436P	PVC Rectangular Worksurface 24D x 36W	AREA 1	1		
		.K1	LAM: Shadow Zephyr				
		.Q	EDGE: Light Gray				
1-V	HON	NWR2466P	PVC Rectangular Worksurface 24D x 66W	AREA 1	1		
		.K1	LAM: Shadow Zephyr				
		.Q	EDGE: Light Gray				
1-W	HON	NWR2442P	PVC Rectangular Worksurface 24D x 42W	AREA 1	1		
		.K1	LAM: Shadow Zephyr				
		.Q	EDGE: Light Gray				
1-X	HON	6213	Low-Back,Dual Action,Lumbar,Pneu Synchro,Arms	AREA 1	2		
		.@	CASTER: (Standard)				
		\$(M1)	GRADE: M1 UPHOLSTERY				
		.X1	UPH: Hon Smart Textile M1				
		A220	COLOR: Basis Amethyst				
		.T	FRAME: Black				
1-Z	HON	NP4236F	Cableway Fabric Panel 42H 36W	AREA 1	4		
		\$(4)	GRADE: Fabric Grade IV				
		.TW	FABRIC: Twigs				
		14	COLOR: Sycamore				
		.Q	Trim: Light Gray				

Troy School District

Furniture - International Academy East

Bid 9641

Tag	Mfg	Part #	Part Description	Building	Qty	Alt	Unit Cost
1-AA	HON	T60	20H Tackboard for 60W Stack-on	AREA 1	1		
		\$(4)	GRADE: Fabric Grade IV				
		.TW	FABRIC: Twigs				
		14	COLOR: Sycamore				
		.Q	PAINT: Light Gray				
1-BB	HON	NP4224F	Cableway Fabric Panel 42H 24W	AREA 1	1		
		\$(4)	GRADE: Fabric Grade IV				
		.TW	FABRIC: Twigs				
		14	COLOR: Sycamore				
		.Q	Trim: Light Gray				
			CONFERENCE ROOM				
2-A	HON	LB4896G	96"L x 48"W Boat Shaped Laminate Top	AREA 2	1		
		.Z	LAM: Columbian Walnut				
2-B	HON	BLS02	Slab base for 144"L, 120"L, OR 96"L TOP	AREA 2	1		
		.Z	LAM: Columbian WALnut				
2-C	HON	4703	Mang., Mid-Back, Pneumatic, Swivel Inverse Synch	AREA 2	6		
		.@	CASTER: (Standard)				
		\$(M1)	GRADE: M1 UPHOLSTERY				
		.TX	UPH: Context				
		17	COLOR: Jam 17				
		.T	FRAME: Black				
			IB COORDINATOR				
3-A	HON	10502	Floorstanding Full Height Ped B/B/F 15-5/8W x 22-3/4D	AREA 3	2		
		.Z	LAM: Columbian Walnut				
3-B	HON	10579	Desk Shell 66W x 30D x 29-1/2H	AREA 3	2		
		.ZZ	LAM: Columbian Walnut				
3-C	HON	105681	Return Shell 29-1/2H x 41W x 24D	AREA 3	2		
		.ZZ	LAM: Columbian Walnut				
3-D	HON	10504	Floorstanding Full Height Ped F/F 15-5/8W x 22-3/4D	AREA 3	2		
		.Z	LAM: Columbian Walnut				

Troy School District

Furniture - International Academy East

Bid 9641

Tag	Mfg	Part #	Part Description	Building	Qty	Alt	Unit Cost
3-E	HON	10534K	72 x 37 1/8" Stack-On Storage,4-Door,Locking,ETA	AREA 3	2		
		.ZZ	LAM: Columbian Walnut				
3-F	HON	105856	Back enclosure for 72"W Stack on Storage	AREA 3	2		
		.Z	LAM: Columbian Walnut				
3-G	HON	HKB900	Maestro Keyboard	AREA 3	2		
		.P	Color: Black				
3-H	HON	6212	High-Back,Dual Action,Lumbar,Pneu Synchro,Arms	AREA 3	2		
		.@	CASTER: (Standard)				
		\$(M1)	GRADE: M1 UPHOLSTERY				
		.X1	UPH: Hon Smart Textile M1				
		A220	COLOR: Basis Amethyst				
		.T	FRAME: Black				
3-I	HON	90056	Tackboard for 72"W Stack on Storage Back Enclosure	AREA 3	2		
		\$(4)	GRADE: Fabric Grade IV				
		.TW	FABRIC: Twigs				
		14	COLOR: Sycamore				
			ASSISTANT PRINCIPAL				
4-A	HON	10502	Floorstanding Full Height Ped B/B/F 15-5/8W x 22-3/4D	AREA 4	1		
		.Z	LAM: Columbian Walnut				
4-B	HON	10504	Floorstanding Full Height Ped F/F 15-5/8W x 22-3/4D	AREA 4	1		
		.Z	LAM: Columbian Walnut				
4-C	HON	10542	Credenza Shell 66W x 24D x 29-1/2H	AREA 4	1		
		.ZZ	LAM: Columbian Walnut				
4-D	HON	10570	Bridge 47W x 24D x 29-1/2H	AREA 4	1		
		.ZZ	LAM: Columbian Walnut				
4-E	HON	10579	Desk Shell 66W x 30D x 29-1/2H	AREA 4	1		
		.ZZ	LAM: Columbian Walnut				
4-F	HON	10534K	72 x 37 1/8" Stack-On Storage,4-Door,Locking,ETA	AREA 4	1		
		.ZZ	LAM: Columbian Walnut				
4-G	HON	105856	Back enclosure for 72"W Stack on Storage	AREA 4	1		
		.Z	LAM: Columbian Walnut				

Troy School District

Furniture - International Academy East

Bid 9641

Tag	Mfg	Part #	Part Description	Building	Qty	Alt	Unit Cost
4-H	HON	HKB900	Maestro Keyboard	AREA 4	1		
		.P	Color: Black				
4-I	HON	6216	Guest, Sled Base, Arms	AREA 4	2		
		\$(M1)	GRADE: M1 UPHOLSTERY				
		.TX	UPH: Context				
		17	COLOR: Jam 17				
		.T	FRAME: Black				
4-J	HON	6212	High-Back,Dual Action,Lumbar,Pneu Synchro,Arms	AREA 4	1		
		.@	CASTER: (Standard)				
		\$(M1)	GRADE: M1 UPHOLSTERY				
		.X1	UPH: Hon Smart Textile M1				
		A220	COLOR: Basis Amethyst				
		.T	FRAME: Black				
4-K	HON	90056	Tackboard for 72"W Stack on Storage Back Enclosure	AREA 4	1		
		\$(4)	GRADE: Fabric Grade IV				
		.TW	FABRIC: Twigs				
		14	COLOR: Sycamore				
			COUNSELING RECEPTION AREA				
5-A	HON	19723R	Flagship Series Pedestal "R" Pull Freestanding B/B	AREA 5	1		
		.Q	PAINT: Light Gray				
5-B	HON	19823R	Flagship Series Pedestal "R" Pull Freestanding F/F	AREA 5	1		
		.Q	PAINT: Light Gray				
5-C	HON	NRW42	Raceway Wall Starter 42H	AREA 5	1		
		.Q	PAINT: Light Gray				
5-D	HON	NEP2429	End Panel Non-Handed 24D 29H	AREA 5	1		
		.Q	PAINT: Light Gray				
5-E	HON	9190R	42W 2-Drawer "R" Pull Lateral 42W 28H 18D	AREA 5	1		
		.Q	PAINT: Light Gray				
5-F	HON	919442	42W 18D Square Edge Laminate Top For Lateral File	AREA 5	1		
		.Q	Lam: Light Grey				
5-G	HON	HKB900	Maestro Keyboard	AREA 5	1		

Troy School District

Furniture - International Academy East

Bid 9641

Tag	Mfg	Part #	Part Description	Building	Qty	Alt	Unit Cost
			COUNSELING OFFICE #1				
6-A	HON	LD42G	42" dia Round Laminate Top	AREA 6	1		
		.Z	LAM: Columbian Walnut				
6-B	HON	10502	Floorstanding Full Height Ped B/B/F 15-5/8W x 22-3/4D	AREA 6	1		
		.Z	LAM: Columbian Walnut				
6-C	HON	10504	Floorstanding Full Height Ped F/F 15-5/8W x 22-3/4D	AREA 6	1		
		.Z	LAM: Columbian Walnut				
6-D	HON	105327	Stack on Storage 78"W for 78D Workstations	AREA 6	1		
		.ZZ	LAM: Columbian Walnut				
6-E	HON	10561	Return Shell 29-1/2H x 47W x 24D	AREA 6	1		
		.ZZ	LAM: Columbian Walnut				
6-F	HON	105857	Back enclosure for 78"W Stack on Storage	AREA 6	1		
		.Z	LAM: Columbian Walnut				
6-G	HON	BLX02	"X" Base for 144"L, 120"L, 96"L, 48", 42" Round To	AREA 6	1		
		.Z	LAM: Columbian WALnut				
6-H	HON	10579	Desk Shell 66W x 30D x 29-1/2H	AREA 6	1		
		.ZZ	LAM: Columbian Walnut				
6-I	HON	HKB900	Maestro Keyboard	AREA 6	1		
		.P	Color: Black				
6-J	HON	6216	Guest, Sled Base, Arms	AREA 6	2		
		\$(M1)	GRADE: M1 UPHOLSTERY				
		.TX	UPH: Context				
		17	COLOR: Jam 17				
		.T	FRAME: Black				
6-K	HON	90057	Tackboard for 78"W Stack on Storage Back Enclosure	AREA 6	1		
		\$(4)	GRADE: Fabric Grade IV				
		.TW	FABRIC: Twigs				
		14	COLOR: Sycamore				
6-L	HON	6213	Low-Back,Dual Action,Lumbar,Pneu Synchro,Arms	AREA 6	1		
		.@	CASTER: (Standard)				
		\$(M1)	GRADE: M1 UPHOLSTERY				
		.X1	UPH: Hon Smart Textile M1				

Troy School District

Furniture - International Academy East

Bid 9641

Tag	Mfg	Part #	Part Description	Building	Qty	Alt	Unit Cost
		A220	COLOR: Basis Amethyst				
		.T	FRAME: Black				
			COUNSELING OFFICE #2				
7-A	HON	LD42G	42" dia Round Laminate Top	AREA 7	1		
		.Z	LAM: Columbian Walnut				
7-B	HON	10502	Floorstanding Full Height Ped B/B/F 15-5/8W x 22-3/4D	AREA 7	1		
		.Z	LAM: Columbian Walnut				
7-C	HON	10504	Floorstanding Full Height Ped F/F 15-5/8W x 22-3/4D	AREA 7	1		
		.Z	LAM: Columbian Walnut				
7-D	HON	105327	Stack on Storage 78"W for 78D Workstations	AREA 7	1		
		.ZZ	LAM: Columbian Walnut				
7-E	HON	10561	Return Shell 29-1/2H x 47W x 24D	AREA 7	1		
		.ZZ	LAM: Columbian Walnut				
7-F	HON	105857	Back enclosure for 78"W Stack on Storage	AREA 7	1		
		.Z	LAM: Columbian Walnut				
7-G	HON	BLX02	"X" Base for 144"L, 120"L, 96"L, 48", 42" Round To	AREA 7	1		
		.Z	LAM: Columbian WALnut				
7-H	HON	10579	Desk Shell 66W x 30D x 29-1/2H	AREA 7	1		
		.ZZ	LAM: Columbian Walnut				
7-I	HON	HKB900	Maestro Keyboard	AREA 7	1		
		.P	Color: Black				
7-J	HON	6216	Guest, Sled Base, Arms	AREA 7	2		
		\$(M1)	GRADE: M1 UPHOLSTERY				
		.TX	UPH: Context				
		17	COLOR: Jam 17				
		.T	FRAME: Black				
7-K	HON	90057	Tackboard for 78"W Stack on Storage Back Enclosure	AREA 7	1		
		\$(4)	GRADE: Fabric Grade IV				
		.TW	FABRIC: Twigs				
		14	COLOR: Sycamore				
7-L	HON	6213	Low-Back,Dual Action,Lumbar,Pneu Synchro,Arms	AREA 7	1		

Troy School District

Furniture - International Academy East

Bid 9641

Tag	Mfg	Part #	Part Description	Building	Qty	Alt	Unit Cost
		.@	CASTER: (Standard)				
		\$(M1)	GRADE: M1 UPHOLSTERY				
		.X1	UPH: Hon Smart Textile M1				
		A220	COLOR: Basis Amethyst				
		.T	FRAME: Black				
			Freight (Areas 1-7)				
			Installation (Areas 1-7)				
TOTAL (AREAS 1-7)							
TEACHER WORKROOM							
8-A	HON	34002R	45-1/4"W x 24"D x 29-1/2"H Single Pedestal Desk - 2R	AREA 8	24		
		.M	LAM: Medium Oak				
		.Q	PAINT: Light Gray				
8-B	HON	5901	Task, Swivel, Pneumatic	AREA 8	24		
		.@	CASTER: (Standard)				
		\$(2)	GRADE: II UPHOLSTERY				
		.BK	UPH: Classic				
		85	COLOR: Blue				
		.T	FRAME: Black				
			Freight (Area 8)				
			Installation (Area 8)				
TOTAL (AREA 8)							
MUSIC FURNITURE							
9-A	NPS	8210TA82BR82	Music Chair with Tablet Arm		80		
9-B	Wenger	1020000	Bravo™ Music Stand, Black/Black		40		
			Freight				
			Installation				
TOTAL MUSIC FURNITURE							

Troy School District
Furniture - International Academy East
Bid 9641

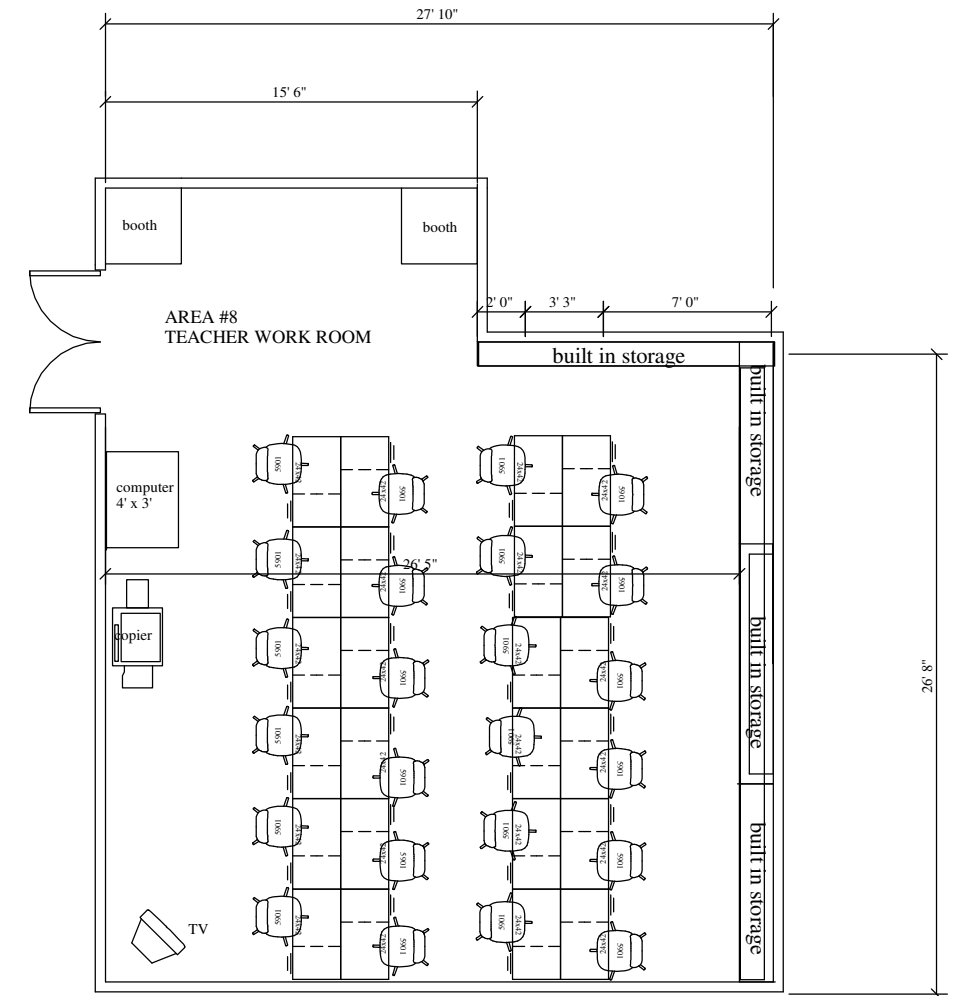
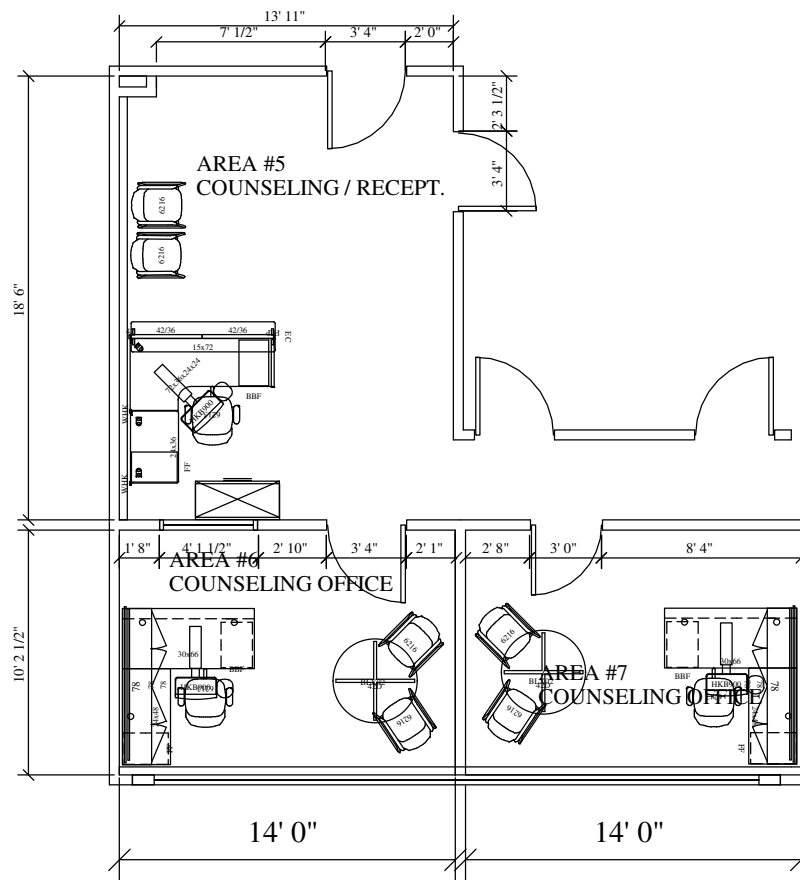
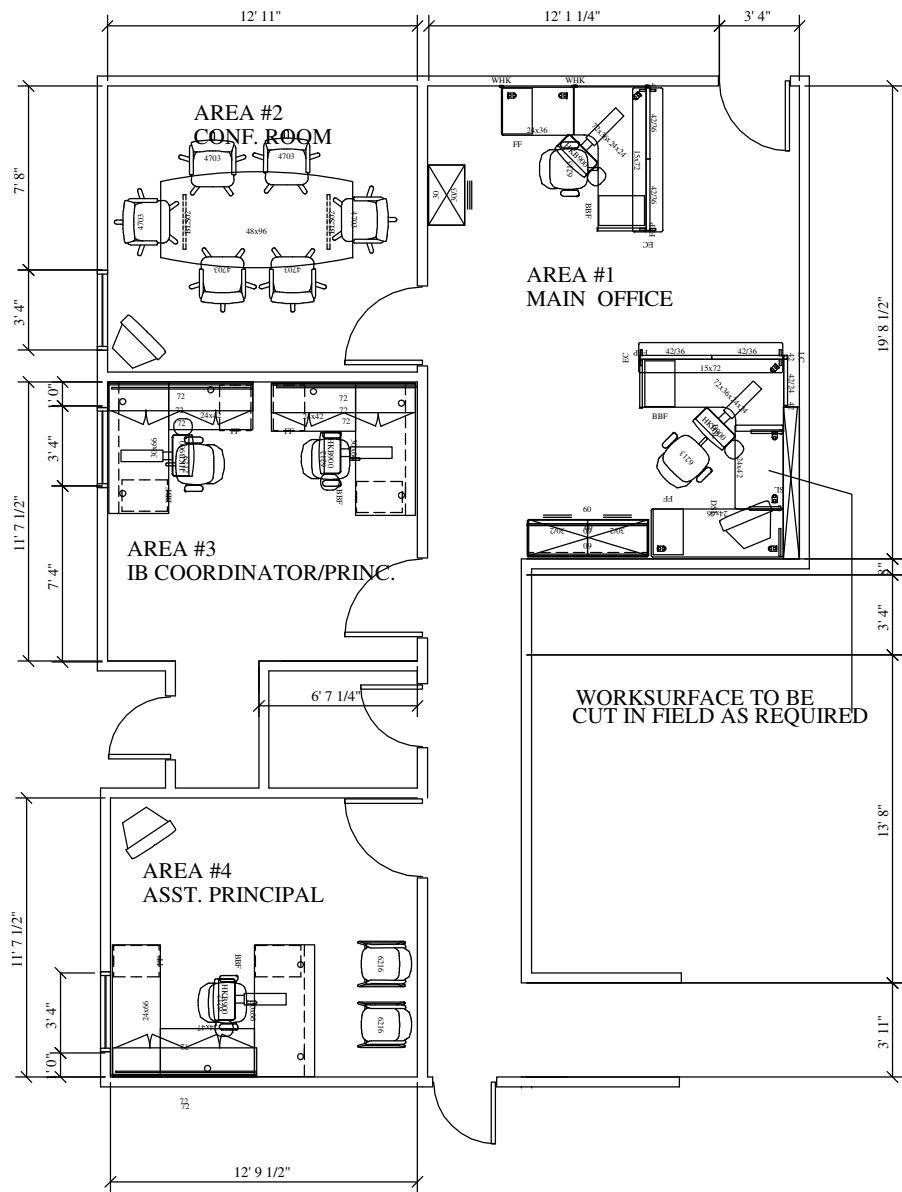
Tag	Mfg	Part #	Part Description	Building	Qty	Alt	Unit Cost
			PHYSICS FURNITURE				
10-A	Silver Street		60" Round Octagon Table with Drawer Storage		1		
			Top: HPL 1 1/4" Worksurface				
			Frame color to match existing cabinetry				
			Top color: Black				
			Banding: 3MM PVC Edgeband				
			Height of unit: 36" high				
			Drawer Units: 4 units consisting of 5 drawers each unit 17 1/3"W x 15 3/16"D with 4" toe kick				
10-B	Silver Street		Science Tables 30" x 72" x 36"H		10		
			Top: HPL 1 1/4" Worksurface				
			Standard Wood H Frame Base				
			Top Color: Black				
			Frame color to match existing cabinetry				
			Freight				
			Installation				
TOTAL PHYSICS							

Company: _____

Address: _____

City: _____ State: _____ Zip: _____

Phone: _____ Fax: _____



T ROY SCHOOL DISTRICT
International Academy East

Scale: 1/8" = 1' - 0"

date:

Troy School District																
Furniture IAE																
Bid 9641																
			Great Lakes Furniture & Supply		Great Lakes Furniture Supply Inc.			Business Interiors by Staples			Global Office Solutions		Office Express - A			
Qty	Tag	Description	Unit Cost	Total	Alt	Unit Cost	Total	Alt	Unit Cost	Total	Unit Cost	Total	Alt.	Unit Cost	Total	
1	1-A	Baserail Cover	9.70	9.70			-			-	9.23	9.23		-	-	
2	1-B	Flagship Pedestal B/B	235.78	471.56			-			-	224.35	448.70		208.00	416.00	
2	1-C	Flagship Pedestal F/F	235.78	471.56			-			-	224.35	448.70		208.00	416.00	
2	1-D	Raceway Wall Starter	39.67	79.34			-			-	37.74	75.48		34.00	68.00	
2	1-E	End Panel	72.72	145.44			-			-	65.00	130.00		59.00	118.00	
1	1-F	3-Drawer Lateral	400.60	400.60			-			-	381.19	381.19		350.00	350.00	
2	1-G	2-Drawer Lateral	304.97	609.94			-			-	290.19	580.38		268.00	536.00	
1	1-H	60W Square Laminate Top	182.45	182.45			-			-	173.61	173.61		159.00	159.00	
1	1-I	30W Square Laminate Top	104.89	104.89			-			-	99.81	99.81		92.00	92.00	
2	1-J	Maestro Keyboard	182.45	364.90			-			-	173.61	347.22		159.00	318.00	
2	1-K	Wall Track	38.34	76.68			-			-	36.48	72.96		33.00	66.00	
1	1-L	Stack-on w/o doors	238.86	238.86			-			-	227.29	227.29		209.00	209.00	
1	1-M	Flipper Doors	142.79	142.79			-			-	135.87	135.87		125.00	125.00	
2	1-N	Shared Leg	109.74	219.48			-			-	104.42	208.84		95.00	190.00	
1	1-O	Support Leg	60.82	60.82			-			-	57.87	57.87		52.00	52.00	
1	1-P	Raceway Cover	9.70	9.70			-			-	9.23	9.23		8.00	8.00	
1	1-Q	Universal Connector	42.75	42.75			-			-	40.68	40.68		36.00	36.00	
1	1-R	Right Cove Worksurface	267.07	267.07			-			-	254.13	254.13		234.00	234.00	
2	1-S	Countertop	169.67	339.34			-			-	161.45	322.90		147.00	294.00	
1	1-T	Left Cove Worksurface	267.07	267.07			-			-	254.13	254.13		234.00	234.00	
1	1-U	36W Rectangular Worksurface	142.79	142.79			-			-	135.87	135.87		124.00	124.00	
1	1-V	66W Rectangular Worksurface	206.25	206.25			-			-	196.26	196.26		182.00	182.00	

Troy School District																
Furniture IAE																
Bid 9641																
			Great Lakes Furniture & Supply		Great Lakes Furniture Supply Inc.			Business Interiors by Staples			Global Office Solutions		Office Express - A			
Qty	Tag	Description	Unit Cost	Total	Alt	Unit Cost	Total	Alt	Unit Cost	Total	Unit Cost	Total	Alt.	Unit Cost	Total	
1	1-W	42W Rectangular Worksurface	156.01	156.01			-			-	148.45	148.45			135.00	135.00
2	1-X	Low Back Lumbar	382.09	764.18			-			-	363.58	727.16			335.00	670.00
4	1-Z	36W Cableway Fabric Panel	178.49	713.96			-			-	153.06	612.24			155.00	620.00
1	1-AA	Tackboard	127.37	127.37			-			-	166.90	166.90			110.00	110.00
1	1-BB	24W Cableway Fabric Panel	232.69	232.69			-			-	133.35	133.35			135.00	135.00
		AREA 1 TOTAL		6,848.19				<i>AIS E3</i>		4,868.03		6,398.45				5,897.00
1	2-A	Laminate Top	274.56	274.56			-			-	256.65	256.65			235.00	235.00
1	2-B	Slab Base	181.13	181.13			-			-	173.61	173.61			159.00	159.00
6	2-C	Mang., Mid -Back, Swivel	283.81	1,702.86			-			-	270.06	1,620.36			249.00	1,494.00
		AREA 2 TOTAL		2,158.55				<i>AIS E3</i>		2,339.04		2,050.62				1,888.00
2	3-A	Floorstanding Pedestal B/B/F	224.32	448.64			-			-	213.45	426.90			195.00	390.00
2	3-B	Desk Shell	237.10	474.20			-			-	225.61	451.22			207.00	414.00
2	3-C	Return Shell	159.98	319.96			-			-	152.23	304.46			140.00	280.00
2	3-D	Floorstanding Pedestal F/F	224.32	448.64			-			-	213.45	426.90			195.00	390.00
2	3-E	Stack on, 4 door	366.67	733.34			-			-	348.90	697.80			320.00	640.00
2	3-F	Back Enclosure	75.80	151.60			-			-	72.13	144.26			65.00	130.00
2	3-G	Maestro Keyboard	182.45	364.90			-			-	173.61	347.22			159.00	318.00
2	3-H	High Back Lumbar	404.13	808.26			-			-	384.55	769.10			355.00	710.00
2	3-I	Tackboard	95.20	190.40			-			-	90.58	181.16			84.00	168.00
		AREA 3 TOTAL		3,939.94				<i>AIS E3</i>		4,607.28		3,749.02				3,440.00

Troy School District																
Furniture IAE																
Bid 9641																
			Great Lakes Furniture & Supply		Great Lakes Furniture Supply Inc.			Business Interiors by Staples			Global Office Solutions		Office Express - A			
Qty	Tag	Description	Unit Cost	Total	Alt	Unit Cost	Total	Alt	Unit Cost	Total	Unit Cost	Total	Alt.	Unit Cost	Total	
1	4-A	Floorstanding Pedestal B/B/F	224.32	224.32			-			-	213.45	213.45		195.00	195.00	
1	4-B	Floorstanding Pedestal F/F	224.32	224.32			-			-	213.45	213.45		195.00	195.00	
1	4-C	Credenza Shell	221.68	221.68			-			-	210.94	210.94		194.00	194.00	
1	4-D	Bridge	120.32	120.32			-			-	114.48	114.48		105.00	105.00	
1	4-E	Desk Shell	237.10	237.10			-			-	225.61	225.61		204.00	204.00	
1	4-F	Stack on, 4 door	366.67	366.67			-			-	348.90	348.90		320.00	320.00	
1	4-G	Back Enclosure	75.80	75.80			-			-	72.13	72.13		65.00	65.00	
1	4-H	Maestro Keyboard	182.45	182.45			-			-	173.61	173.61		159.00	159.00	
2	4-I	Guest Chair	190.83	381.66			-			-	181.58	363.16		165.00	330.00	
1	4-J	High Back Lumbar	404.13	404.13			-			-	384.55	384.55		355.00	355.00	
1	4-K	Tackboard	95.20	95.20			-			-	90.58	90.58		84.00	84.00	
		AREA 4 TOTAL		2,533.65			-	AIS E3		3,179.97		2,410.86			2,206.00	
1	5-A	Flagship Pedestal B/B	235.78	235.78			-			-	224.35	224.35		208.00	208.00	
1	5-B	Flagship Pedestal F/F	235.78	235.78			-			-	224.35	224.35		208.00	208.00	
1	5-C	Raceway	39.67	39.67			-			-	37.74	37.74		34.00	34.00	
1	5-D	End Panel	72.72	72.72			-			-	65.00	65.00		59.00	59.00	
1	5-E	2-Drawer Lateral	390.90	390.90			-			-	371.97	371.97		340.00	340.00	
1	5-F	Square Edge Laminate Top	143.67	143.67			-			-	136.71	136.71		125.00	125.00	
1	5-G	Maestro Keyboard	182.45	182.45			-			-	173.61	173.61		159.00	159.00	
2	5-H	Wall Track	38.34	76.68			-			-	36.48	72.96		32.00	64.00	
1	5-I	Raceway End Cover	9.70	9.70			-			-	9.23	9.23		8.00	8.00	
1	5-J	Right Cove Worksurface	267.07	267.07			-			-	254.13	254.13		234.00	234.00	

Troy School District																
Furniture IAE																
Bid 9641																
			Great Lakes Furniture & Supply		Great Lakes Furniture Supply Inc.			Business Interiors by Staples			Global Office Solutions		Office Express - A			
Qty	Tag	Description	Unit Cost	Total	Alt	Unit Cost	Total	Alt	Unit Cost	Total	Unit Cost	Total	Alt.	Unit Cost	Total	
1	5-K	Countertop	169.67	169.67			-			-	161.45	161.45			148.00	148.00
1	5-L	Rectangular Worksurface	142.79	142.79			-			-	135.87	135.87			124.00	124.00
2	5-M	Guest Chair	190.83	381.66			-			-	181.58	363.16			165.00	330.00
1	5-N	Low Back Lumbar	382.09	382.09			-			-	363.58	363.58			335.00	335.00
2	5-O	Cableway Fabric Panel	178.49	356.98			-			-	153.06	306.12			124.00	248.00
		AREA 5 TOTAL		3,087.61			-	<i>AIS E3</i>		2,713.16		2,900.23				2,624.00
							-									
1	6-A	Round Laminate Top	146.32	146.32			-			-	139.23	139.23			128.00	128.00
1	6-B	Floorstanding Pedestal B/B/F	224.32	224.32			-			-	213.45	213.45			195.00	195.00
1	6-C	Floorstanding Pedestal F/F	224.32	224.32			-			-	213.45	213.45			195.00	195.00
1	6-D	Stack On Storage	373.28	373.28			-			-	355.19	355.19			327.00	327.00
1	6-E	Return Shell	170.55	170.55			-			-	162.29	162.29			149.00	149.00
1	6-F	Back Enclosure	83.30	83.30			-			-	79.26	79.26			72.00	72.00
1	6-G	X-Base	134.86	134.86			-			-	115.32	115.32			118.00	118.00
1	6-H	Desk Shell	237.10	237.10			-			-	225.61	225.61			207.00	207.00
1	6-I	Maestro Keyboard	182.45	182.45			-			-	173.61	173.61			159.00	159.00
2	6-J	Guest Chair	190.83	381.66			-			-	181.58	363.16			165.00	330.00
1	6-K	Tackboard	100.48	100.48			-			-	95.61	95.61			87.00	87.00
1	6-L	Low Back Lumbar	382.09	382.09			-			-	363.58	363.58			335.00	335.00
		AREA 6 TOTAL		2,640.73			-	<i>AIS E3</i>		3,165.36		2,499.76				2,302.00
							-									
1	7-A	Round Laminate Top	146.32	146.32			-			-	139.23	139.23			128.00	128.00
1	7-B	Floorstanding Pedestal B/B/F	224.32	224.32			-			-	213.45	213.45			195.00	195.00
1	7-C	Floorstanding Pedestal F/F	224.32	224.32			-			-	213.45	213.45			195.00	195.00
1	7-D	Stack On Storage	373.28	373.28			-			-	355.19	355.19			327.00	327.00

Troy School District																
Furniture IAE																
Bid 9641																
			Great Lakes Furniture & Supply		Great Lakes Furniture Supply Inc.			Business Interiors by Staples			Global Office Solutions		Office Express - A			
Qty	Tag	Description	Unit Cost	Total	Alt	Unit Cost	Total	Alt	Unit Cost	Total	Unit Cost	Total	Alt.	Unit Cost	Total	
1	7-E	Return Shell	170.55	170.55			-			-	162.29	162.29		149.00	149.00	
1	7-F	Back Enclosure	83.30	83.30			-			-	79.26	79.26		72.00	72.00	
1	7-G	X-Base	134.86	134.86			-			-	115.32	115.32		118.00	118.00	
1	7-H	Desk Shell	237.10	237.10			-			-	225.61	225.61		207.00	207.00	
1	7-I	Maestro Keyboard	182.45	182.45			-			-	173.61	173.61		159.00	159.00	
2	7-J	Guest Chair	190.83	381.66			-			-	181.58	363.16		165.00	330.00	
1	7-K	Tackboard	100.48	100.48			-			-	95.61	95.61		87.00	87.00	
1	7-L	Low Back Lumbar	382.09	382.09			-			-	363.58	363.58		335.00	335.00	
		AREA 7 TOTAL		2,640.73			-	<i>AIS E3</i>		3,056.81		2,499.76			2,302.00	
		Freight Areas 1-7		-			-			-		1,900.00			-	
		Installation		-			-			-					525.00	
		Total Areas 1-7		47,698.80			-			23,929.65		24,408.70			21,184.00	
24	8-A	Single Pedestal Desk	247.24	5,933.76			-			-	235.26	5,646.24		215.00	5,160.00	
24	8-B	Task Chairs	78.01	1,872.24			-			-	74.23	1,781.52		68.00	1,632.00	
		Freight Area 8		-			-			-					-	
		Installation		-			-			-		1,000.00			150.00	
		Total Area 8		7,806.00			-	<i>AIS E3</i>		8,866.76		8,427.76			6,942.00	
80	9-A	Music Chair w/Tablet Arm,no bkrk	50.00	4,000.00		88.17	7,053.60			-				115.00	9,200.00	
40	9-B	Music Stand	37.00	1,480.00	Manhasset	27.00	1,080.00			-			NPS 82MS	42.00	1,680.00	
		Freight		-			600.00			-					350.00	
		Installation		-			400.00			-					-	
		Total Music		5,480.00			9,133.60			-		-			11,230.00	
				-								-				

Troy School District			Great Lakes Furniture & Supply			Great Lakes Furniture Supply Inc.			Business Interiors by Staples			Global Office Solutions		Office Express - A		
Furniture IAE			Unit Cost			Unit Cost			Unit Cost			Unit Cost		Unit Cost		
Bid 9641			Total			Total			Total			Total		Total		
Qty	Tag	Description	Unit Cost	Total	Alt	Unit Cost	Total	Alt	Unit Cost	Total	Unit Cost	Total	Alt.	Unit Cost	Total	
1	10-A	Octagon Table	2,495.00	2,495.00	Diversified Woodcrafts	2,870.15	2,870.15			-		-	Diversified Woodcrafts 1641KF-MOD	2,800.00	2,800.00	
10	10-B	Science Tables	384.95	3,849.50	Diversified Woodcrafts	445.58	4,455.80			-		-	Diversified Woodcrafts P7151K36S-MOD	435.00	4,350.00	
		Freight		325.00		450.00	-			-		-			450.00	
		Installation		-		350.00	-			-		-			-	
Total Physics				6,669.50		7,325.95				-		-			7,600.00	

Troy School District			Furniture IAE			Bid 9641														
Qty	Tag	Description	Office Express - B			A-1 Business Products		Wenger Corp.			Flairwood Industries		ISCG							
			Alt	Unit Cost	Total	Unit Cost	Total	Alt.	Unit Cost	Total	Unit Cost	Total	Alt	Unit Cost	Total					
1	1-A	Baserail Cover		-	-	-	-		-	-	-		Yes		3,856.16					
2	1-B	Flagship Pedestal B/B	Hon 33723R	194.00	388.00	231.84	463.68		-	-	-				-					
2	1-C	Flagship Pedestal F/F	Hon 33823R	194.00	388.00	231.84	463.68		-	-	-				-					
2	1-D	Raceway Wall Starter		34.00	68.00	39.00	78.00		-	-	-				-					
2	1-E	End Panel		59.00	118.00	67.16	134.32			-	-				-					
1	1-F	3-Drawer Lateral		350.00	350.00	393.90	393.90			-	-				-					
2	1-G	2-Drawer Lateral		268.00	536.00	299.86	599.72			-	-				-					
1	1-H	60W Square Laminate Top		159.00	159.00	179.40	179.40			-	-				-					
1	1-I	30W Square Laminate Top		92.00	92.00	103.13	103.13			-	-				-					
2	1-J	Maestro Keyboard	Hon HKB700	129.00	258.00	179.40	358.80			-	-		Lacasse LGC-AKDMO2	194.95	389.90					
2	1-K	Wall Track		33.00	66.00	37.70	75.40			-	-				-					
1	1-L	Stack-on w/o doors		209.00	209.00	234.86	234.86			-	-				-					
1	1-M	Flipper Doors		125.00	125.00	140.40	140.40			-	-				-					
2	1-N	Shared Leg		95.00	190.00	107.90	215.80			-	-				-					
1	1-O	Support Leg		52.00	52.00	59.80	59.80			-	-				-					
1	1-P	Raceway Cover		8.00	8.00	9.53	9.53			-	-				-					
1	1-Q	Universal Connector		36.00	36.00	42.03	42.03			-	-				-					
1	1-R	Right Cove Worksurface	Hon NWX93AART	219.00	219.00	262.60	262.60			-	-				-					
2	1-S	Countertop	Hon NCS1572T	106.00	212.00	166.83	333.66			-	-				-					
1	1-T	Left Cove Worksurface	Hon NWX93AART	219.00	219.00	262.60	262.60			-	-				-					
1	1-U	36W Rectangular Worksurface	Hon NWR2436T	98.00	98.00	140.40	140.40			-	-				-					
1	1-V	66W Rectangular Worksurface	Hon NWR2466T	147.00	147.00	202.80	202.80			-	-				-					

Troy School District																
Furniture IAE																
Bid 9641																
			Office Express - B			A-1 Business Products		Wenger Corp.			Flairwood Industries		ISCG			
Qty	Tag	Description	Alt	Unit Cost	Total	Unit Cost	Total	Alt.	Unit Cost	Total	Unit Cost	Total	Alt	Unit Cost	Total	
1	1-W	42W Rectangular Worksurface	Hon NWR2442T	113.00	113.00	153.40	153.40			-		-			-	
2	1-X	Low Back Lumbar		335.00	670.00	375.70	751.40			-		-	United Chair Onyx RD6	172.00	344.00	
4	1-Z	36W Cableway Fabric Panel		155.00	620.00	175.50	702.00			-		-			-	
1	1-AA	Tackboard		110.00	110.00	125.23	125.23			-		-			-	
1	1-BB	24W Cableway Fabric Panel		135.00	135.00	151.23	151.23			-		-			-	
		AREA 1 TOTAL			5,586.00		6,637.77			-		-			4,590.06	
1	2-A	Laminate Top		235.00	235.00	265.20	265.20			-		-	Lacasse 71- B96.2	415.00	415.00	
1	2-B	Slab Base		159.00	159.00	178.10	178.10			-		-	Lacasse LGC- P30.7296	179.00	179.00	
6	2-C	Mang., Mid -Back, Swivel		249.00	1,494.00	279.06	1,674.36			-		-	Safco 3477	272.00	1,632.00	
		AREA 2 TOTAL			1,888.00		2,117.66			-		-			2,226.00	
2	3-A	Floorstanding Pedestal B/B/F		195.00	390.00	220.56	441.12			-		-	Yes	483.00	966.00	
2	3-B	Desk Shell		207.00	414.00	233.13	466.26			-		-			-	
2	3-C	Return Shell		140.00	280.00	157.30	314.60			-		-	Yes	215.00	430.00	
2	3-D	Floorstanding Pedestal F/F		195.00	390.00	220.56	441.12			-		-	Yes	281.00	562.00	
2	3-E	Stack on, 4 door		320.00	640.00	360.53	721.06			-		-	Yes	405.00	810.00	
2	3-F	Back Enclosure		65.00	130.00	74.53	149.06			-		-			-	
2	3-G	Maestro Keyboard	Hon HKB700	129.00	258.00	179.40	358.80			-		-	Yes	195.00	390.00	
2	3-H	High Back Lumbar		355.00	710.00	397.36	794.72			-		-	United Chair Radar RD11	204.00	408.00	
2	3-I	Tackboard		84.00	168.00	93.60	187.20			-		-		132.00	264.00	
		AREA 3 TOTAL			3,380.00		3,873.94			-		-			3,830.00	

Troy School District																
Furniture IAE																
Bid 9641																
			Office Express - B			A-1 Business Products		Wenger Corp.			Flairwood Industries		ISCG			
Qty	Tag	Description	Alt	Unit Cost	Total	Unit Cost	Total	Alt.	Unit Cost	Total	Unit Cost	Total	Alt	Unit Cost	Total	
1	4-A	Floorstanding Pedestal B/B/F		195.00	195.00	220.56	220.56			-		-	Yes	502.00	502.00	
1	4-B	Floorstanding Pedestal F/F		195.00	195.00	220.56	220.56			-		-	Yes	281.00	281.00	
1	4-C	Credenza Shell		194.00	194.00	217.96	217.96			-		-	Yes	281.00	281.00	
1	4-D	Bridge		105.00	105.00	118.30	118.30			-		-	Yes	170.00	170.00	
1	4-E	Desk Shell		207.00	207.00	233.13	233.13			-		-			-	
1	4-F	Stack on, 4 door		320.00	320.00	360.53	360.53			-		-	Yes	405.00	405.00	
1	4-G	Back Enclosure		65.00	65.00	74.53	74.53			-		-			-	
1	4-H	Maestro Keyboard	Hon HKB700	129.00	129.00	179.40	179.40			-		-	Yes	195.00	195.00	
2	4-I	Guest Chair		165.00	330.00	187.63	375.26			-		-	Yes	124.00	248.00	
1	4-J	High Back Lumbar		355.00	355.00	397.36	397.36			-		-	United Chair Radar RD11	204.00	204.00	
1	4-K	Tackboard		84.00	84.00	93.60	93.60			-		-	Yes	132.00	132.00	
		AREA 4 TOTAL			2,179.00		2,491.19			-		-			2,418.00	
1	5-A	Flagship Pedestal B/B	Hon 33723Q	194.00	194.00	231.83	231.83			-		-			-	
1	5-B	Flagship Pedestal F/F	Hon 33823Q	194.00	194.00	231.83	231.83			-		-			-	
1	5-C	Raceway		34.00	34.00	39.00	39.00			-		-			-	
1	5-D	End Panel		59.00	59.00	67.16	67.16			-		-			-	
1	5-E	2-Drawer Lateral		340.00	340.00	384.36	384.36			-		-			-	
1	5-F	Square Edge Laminate Top		125.00	125.00	141.26	141.26			-		-			-	
1	5-G	Maestro Keyboard	Hon HKB700	129.00	129.00	179.40	179.40			-		-	Yes	195.00	195.00	
2	5-H	Wall Track		32.00	64.00	37.70	75.40			-		-			-	
1	5-I	Raceway End Cover		8.00	8.00	9.53	9.53			-		-			-	
1	5-J	Right Cove Worksurface	Hon NWV93AART	219.00	219.00	262.60	262.60			-		-			-	

Troy School District															
Furniture IAE															
Bid 9641															
			Office Express - B			A-1 Business Products		Wenger Corp.			Flairwood Industries		ISCG		
Qty	Tag	Description	Alt	Unit Cost	Total	Unit Cost	Total	Alt.	Unit Cost	Total	Unit Cost	Total	Alt	Unit Cost	Total
1	5-K	Countertop	Hon NCS1572T	106.00	106.00	166.83	166.83			-		-			-
1	5-L	Rectangular Worksurface	Hon NWR2436T	98.00	98.00	140.40	140.40			-		-			-
2	5-M	Guest Chair		165.00	330.00	187.63	375.26			-		-	Yes	124.00	248.00
1	5-N	Low Back Lumbar		335.00	335.00	375.70	375.70			-		-	Yes	172.00	172.00
2	5-O	Cableway Fabric Panel		124.00	248.00	175.50	351.00			-		-	Yes		1,364.77
		AREA 5 TOTAL			2,483.00		3,031.56			-		-			1,784.77
1	6-A	Round Laminate Top		128.00	128.00	143.86	143.86			-		-	Yes	195.00	195.00
1	6-B	Floorstanding Pedestal B/B/F		195.00	195.00	220.56	220.56			-		-	Yes	502.00	502.00
1	6-C	Floorstanding Pedestal F/F		195.00	195.00	220.56	220.56			-		-	Yes	281.00	281.00
1	6-D	Stack On Storage		327.00	327.00	367.03	367.03			-		-	Yes	405.00	405.00
1	6-E	Return Shell		149.00	149.00	167.70	167.70			-		-	Yes	228.00	228.00
1	6-F	Back Enclosure		72.00	72.00	81.90	81.90			-		-			-
1	6-G	X-Base		118.00	118.00	132.60	132.60			-		-	Yes	158.00	158.00
1	6-H	Desk Shell		207.00	207.00	233.13	233.13			-		-			-
1	6-I	Maestro Keyboard	Hon HKB700	129.00	129.00	179.40	179.40			-		-	Yes	195.00	195.00
2	6-J	Guest Chair		165.00	330.00	187.63	375.26			-		-	Yes	124.00	248.00
1	6-K	Tackboard		87.00	87.00	98.80	98.80			-		-	Yes	154.00	154.00
1	6-L	Low Back Lumbar		335.00	335.00	375.70	375.70			-		-	Yes	172.00	172.00
		AREA 6 TOTAL			2,272.00		2,596.50			-		-			2,538.00
1	7-A	Round Laminate Top		128.00	128.00	143.86	143.86			-		-	Yes	195.00	195.00
1	7-B	Floorstanding Pedestal B/B/F		195.00	195.00	220.56	220.56			-		-	Yes	502.00	502.00
1	7-C	Floorstanding Pedestal F/F		195.00	195.00	220.56	220.56			-		-	Yes	281.00	281.00
1	7-D	Stack On Storage		327.00	327.00	367.03	367.03			-		-	Yes	405.00	405.00

Troy School District															
Furniture IAE															
Bid 9641															
			Office Express - B			A-1 Business Products		Wenger Corp.			Flairwood Industries		ISCG		
Qty	Tag	Description	Alt	Unit Cost	Total	Unit Cost	Total	Alt.	Unit Cost	Total	Unit Cost	Total	Alt	Unit Cost	Total
1	7-E	Return Shell		149.00	149.00	233.13	233.13			-		-	Yes	228.00	228.00
1	7-F	Back Enclosure		72.00	72.00	233.13	233.13			-		-			-
1	7-G	X-Base		118.00	118.00	132.60	132.60			-		-	Yes	158.00	158.00
1	7-H	Desk Shell		207.00	207.00	233.13	233.13			-		-			-
1	7-I	Maestro Keyboard	Hon HKB700	129.00	129.00	179.40	179.40			-		-	Yes	195.00	195.00
2	7-J	Guest Chair		165.00	330.00	187.63	375.26			-		-	Yes	124.00	248.00
1	7-K	Tackboard		87.00	87.00	98.80	98.80			-		-	Yes	154.00	154.00
1	7-L	Low Back Lumbar		335.00	335.00	375.70	375.70			-		-	Yes	172.00	172.00
		AREA 7 TOTAL			2,272.00		2,813.16			-		-			2,538.00
		Freight Areas 1-7			-		-			-		-			-
		Installation			525.00		-			-		-			-
		Total Areas 1-7			20,585.00		23,561.78			-		-			20,119.83
24	8-A	Single Pedestal Desk		215.00	5,160.00	230.00	5,520.00			-		-	Yes	263.00	6,312.00
24	8-B	Task Chairs		68.00	1,632.00	72.66	1,743.84			-		-	Yes	123.00	2,952.00
		Freight Area 8			-		-			-		-			200.00
		Installation			150.00		-			-		-			-
		Total Area 8			6,942.00		7,263.84			-		-			9,464.00
80	9-A	Music Chair w/Tablet Arm,no bkrk		115.00	9,200.00		-	#0930000 / #0939014		7,835.00		-			-
40	9-B	Music Stand		42.00	1,680.00		-		55.00	2,200.00		-			-
		Freight			-		-			300.00		-			-
		Installation			350.00		-			334.00		-			-
		Total Music			11,230.00		-			10,669.00		-			-
															-

Troy School District																
Furniture IAE																
Bid 9641																
			Office Express - B			A-1 Business Products		Wenger Corp.			Flairwood Industries		ISCG			
Qty	Tag	Description	Alt	Unit Cost	Total	Unit Cost	Total	Alt.	Unit Cost	Total	Unit Cost	Total	Alt	Unit Cost	Total	
1	10-A	Octagon Table		2,800.00	2,800.00		-			-	1,628.00	1,628.00			-	
10	10-B	Science Tables		435.00	4,350.00		-			-	477.00	4,770.00			-	
		Freight			450.00		-			-		400.00			-	
		Installation			-		-			-		560.00			-	
		Total Physics			7,600.00		-			-		7,358.00			-	

Troy School District																	
Furniture IAE																	
Bid 9641																	
Qty	Tag	Description	School Specialty			Kerr Albert Office Supply		Dew-El Corp.			Brainard Enterprises Inc.		Pepco Inc.				
			Alt	Unit Cost	Total	Unit Cost	Total	Alt.	Unit Cost	Total	Unit Price	Total	Alt.	Unit Price	Total		
1	1-A	Baserail Cover		-	-	8.77	8.77					-				-	
2	1-B	Flagship Pedestal B/B		254.86	509.72	213.42	426.84		240.45	480.90		-				-	
2	1-C	Flagship Pedestal F/F		254.86	509.72	213.42	426.84	Hon pricing based on \$12,000 min. order	240.45	480.90		-				-	
2	1-D	Raceway Wall Starter		42.87	85.74	35.90	71.80		40.45	80.90		-					-
2	1-E	End Panel		73.84	147.68	61.84	123.68			74.15	148.30		-				-
1	1-F	3-Drawer Lateral		433.02	433.02	367.55	367.55		408.55	408.55		-				-	
2	1-G	2-Drawer Lateral		329.65	659.30	279.80	559.60		311.00	622.00		-				-	
1	1-H	60W Square Laminate Top		197.22	197.22	167.40	167.40		186.05	186.05		-				-	
1	1-I	30W Square Laminate Top		113.38	113.38	96.24	96.24		106.95	106.95		-				-	
2	1-J	Maestro Keyboard		197.22	394.44	165.15	330.30		186.05	372.10		-				-	
2	1-K	Wall Track		41.45	82.90	34.71	69.42		39.10	78.20		-				-	
1	1-L	Stack-on w/o doors		258.20	258.20	219.15	219.15		243.60	243.60		-				-	
1	1-M	Flipper Doors		154.35	154.35	131.01	131.01		145.60	145.60		-				-	
2	1-N	Shared Leg		118.62	237.24	99.33	198.66		111.90	223.80		-				-	
1	1-O	Support Leg		65.74	65.74	55.05	55.05		62.00	62.00		-				-	
1	1-P	Raceway Cover		10.48	10.48	8.77	8.77		9.85	9.85		-				-	
1	1-Q	Universal Connector		46.21	46.21	38.70	38.70		43.60	43.60		-				-	
1	1-R	Right Cove Worksurface		288.69	288.69	241.74	241.74		272.35	272.35		-				-	
2	1-S	Countertop		183.40	366.80	153.59	307.18		173.00	346.00		-				-	
1	1-T	Left Cove Worksurface		288.69	288.69	241.74	241.74		272.35	272.35		-				-	
1	1-U	36W Rectangular Worksurface		154.35	154.35	129.25	129.25		145.60	145.60		-				-	
1	1-V	66W Rectangular Worksurface		222.95	222.95	186.70	186.70		210.35	210.35		-				-	

Troy School District																
Furniture IAE																
Bid 9641																
			School Specialty			Kerr Albert Office Supply		Dew-El Corp.			Brainard Enterprises Inc.		Pepco Inc.			
Qty	Tag	Description	Alt	Unit Cost	Total	Unit Cost	Total	Alt.	Unit Cost	Total	Unit Price	Total	Alt.	Unit Price	Total	
1	1-W	42W Rectangular Worksurface		168.63	168.63	141.22	141.22		159.10	159.10		-			-	
2	1-X	Low Back Lumbar		413.01	826.02	350.57	701.14		389.65	779.30		-			-	
4	1-Z	36W Cableway Fabric Panel		192.94	771.76	161.57	646.28		182.00	728.00		-			-	
1	1-AA	Tackboard		137.78	137.78	116.86	116.86		129.90	129.90		-			-	
1	1-BB	24W Cableway Fabric Panel		166.25	166.25	139.22	139.22		156.85	156.85		-			-	
		AREA 1 TOTAL			7,297.26		6,151.11			6,905.60		-			-	
										-		-			-	
1	2-A	Laminate Top		291.53	291.53	247.46	247.46		275.00	275.00		-			-	
1	2-B	Slab Base		195.78	195.78	166.18	166.18		184.75	184.75		-			-	
6	2-C	Mang., Mid -Back, Swivel		306.78	1,840.68	260.40	1,562.40		289.45	1,736.70		-			-	
		AREA 2 TOTAL			2,327.99		1,976.04			2,196.45		-			-	
										-		-			-	
2	3-A	Floorstanding Pedestal B/B/F		242.47	484.94	203.04	406.08		228.75	457.50		-			-	
2	3-B	Desk Shell		256.28	512.56	214.62	429.24		241.80	483.60		-			-	
2	3-C	Return Shell		172.92	345.84	144.80	289.60		163.15	326.30		-			-	
2	3-D	Floorstanding Pedestal F/F		242.47	484.94	203.04	406.08		228.75	457.50		-			-	
2	3-E	Stack on, 4 door		396.34	792.68	331.89	663.78		337.90	675.80		-			-	
2	3-F	Back Enclosure		81.94	163.88	68.61	137.22		77.30	154.60		-			-	
2	3-G	Maestro Keyboard		197.22	394.44	165.15	330.30		186.05	372.10		-			-	
2	3-H	High Back Lumbar		387.76	775.52	370.78	741.56		412.15	824.30		-			-	
2	3-I	Tackboard		102.89	205.78	86.16	172.32		97.10	194.20		-			-	
		AREA 3 TOTAL			4,160.58		3,576.18			3,945.90		-			-	
										-		-			-	

Troy School District															
Furniture IAE															
Bid 9641															
			School Specialty			Kerr Albert Office Supply		Dew-El Corp.			Brainard Enterprises Inc.		Pepco Inc.		
Qty	Tag	Description	Alt	Unit Cost	Total	Unit Cost	Total	Alt.	Unit Cost	Total	Unit Price	Total	Alt.	Unit Price	Total
1	4-A	Floorstanding Pedestal B/B/F		242.47	242.47	203.04	203.04		228.75	228.75		-			-
1	4-B	Floorstanding Pedestal F/F		242.47	242.47	203.04	203.04		228.75	228.75		-			-
1	4-C	Credenza Shell		239.61	239.61	200.65	200.65		226.05	226.05		-			-
1	4-D	Bridge		130.04	130.04	108.90	108.90		122.70	122.70		-			-
1	4-E	Desk Shell		256.28	256.28	214.62	214.62		241.80	241.80		-			-
1	4-F	Stack on, 4 door		396.34	396.34	331.89	331.89		337.95	337.95		-			-
1	4-G	Back Enclosure		81.94	81.94	68.61	68.61		77.30	77.30		-			-
1	4-H	Maestro Keyboard		197.22	197.22	165.15	165.15		186.05	186.05		-			-
2	4-I	Guest Chair		206.27	412.54	175.09	350.18		194.60	389.20		-			-
1	4-J	High Back Lumbar		387.76	387.76	370.78	370.78		412.15	412.15		-			-
1	4-K	Tackboard		102.89	102.89	86.16	86.16		97.10	97.10		-			-
		AREA 4 TOTAL			2,689.56		2,303.02			2,547.80		-			-
										-		-			-
1	5-A	Flagship Pedestal B/B		179.59	179.59	213.42	213.42		240.45	240.45		-			-
1	5-B	Flagship Pedestal F/F		190.08	190.08	213.42	213.42		240.45	240.45		-			-
1	5-C	Raceway		42.87	42.87	35.90	35.90		40.45	40.45		-			-
1	5-D	End Panel		73.84	73.84	61.84	61.84		74.15	74.15		-			-
1	5-E	2-Drawer Lateral		422.54	422.54	358.65	358.65		398.65	398.65		-			-
1	5-F	Square Edge Laminate Top		155.29	155.29	131.82	131.82		146.50	146.50		-			-
1	5-G	Maestro Keyboard		197.22	197.22	165.15	165.15		186.05	186.05		-			-
2	5-H	Wall Track		41.45	82.90	34.71	69.42		39.10	78.20		-			-
1	5-I	Raceway End Cover		10.48	10.48	8.77	8.77		9.85	9.85		-			-
1	5-J	Right Cove Worksurface		357.75	357.75	241.74	241.74		272.35	272.35		-			-

Troy School District																
Furniture IAE																
Bid 9641																
			School Specialty			Kerr Albert Office Supply		Dew-El Corp.			Brainard Enterprises Inc.		Pepco Inc.			
Qty	Tag	Description	Alt	Unit Cost	Total	Unit Cost	Total	Alt.	Unit Cost	Total	Unit Price	Total	Alt.	Unit Price	Total	
1	5-K	Countertop		183.40	183.40	153.59	153.59		173.00	173.00		-			-	
1	5-L	Rectangular Worksurface		154.35	154.35	129.25	129.25		145.65	145.65		-			-	
2	5-M	Guest Chair		206.27	412.54	175.09	350.18		194.60	389.20		-			-	
1	5-N	Low Back Lumbar		413.01	413.01	350.57	350.57		389.65	389.65		-			-	
2	5-O	Cableway Fabric Panel		192.94	385.88	161.57	323.14		182.00	364.00		-			-	
		AREA 5 TOTAL			3,261.74		2,806.86			3,148.60		-			-	
										-					-	
1	6-A	Round Laminate Top		158.15	158.15	134.24	134.24		149.20	149.20		-			-	
1	6-B	Floorstanding Pedestal B/B/F		242.47	242.47	203.04	203.04		228.75	228.75		-			-	
1	6-C	Floorstanding Pedestal F/F		242.47	242.47	203.04	203.04		228.75	228.75		-			-	
1	6-D	Stack On Storage		403.49	403.49	337.88	337.88		380.65	380.65		-			-	
1	6-E	Return Shell		184.36	184.36	154.38	154.38		173.95	173.95		-			-	
1	6-F	Back Enclosure		90.03	90.03	75.39	75.39		84.95	84.95		-			-	
1	6-G	X-Base		145.77	145.77	123.73	123.73		137.50	137.50		-			-	
1	6-H	Desk Shell		256.28	256.28	214.62	214.62		241.80	241.80		-			-	
1	6-I	Maestro Keyboard		197.22	197.22	165.15	165.15		186.05	186.05		-			-	
2	6-J	Guest Chair		206.27	412.54	175.09	350.18		194.60	389.20		-			-	
1	6-K	Tackboard		108.61	108.61	90.96	90.96		102.50	102.50		-			-	
1	6-L	Low Back Lumbar		413.01	413.01	350.57	350.57		389.60	389.60		-			-	
		AREA 6 TOTAL			2,854.40		2,403.18			2,692.90		-			-	
										-					-	
1	7-A	Round Laminate Top		158.15	158.15	134.24	134.24		149.20	149.20		-			-	
1	7-B	Floorstanding Pedestal B/B/F		242.47	242.47	203.04	203.04		228.75	228.75		-			-	
1	7-C	Floorstanding Pedestal F/F		242.47	242.47	203.04	203.04		228.75	228.75		-			-	
1	7-D	Stack On Storage		403.49	403.49	337.88	337.88		380.65	380.65		-			-	

Troy School District																
Furniture IAE																
Bid 9641																
			School Specialty			Kerr Albert Office Supply		Dew-El Corp.			Brainard Enterprises Inc.		Pepco Inc.			
Qty	Tag	Description	Alt	Unit Cost	Total	Unit Cost	Total	Alt.	Unit Cost	Total	Unit Price	Total	Alt.	Unit Price	Total	
1	7-E	Return Shell		184.36	184.36	154.38	154.38		173.95	173.95		-			-	
1	7-F	Back Enclosure		90.03	90.03	75.39	75.39		84.95	84.95		-			-	
1	7-G	X-Base		145.77	145.77	123.73	123.73		137.50	137.50		-			-	
1	7-H	Desk Shell		256.28	256.28	214.62	214.62		241.80	241.80		-			-	
1	7-I	Maestro Keyboard		197.22	197.22	165.15	165.15		186.05	186.05		-			-	
2	7-J	Guest Chair		206.27	412.54	175.09	350.18		194.60	389.20		-			-	
1	7-K	Tackboard		108.61	108.61	90.96	90.96		102.50	102.50		-			-	
1	7-L	Low Back Lumbar		413.01	413.01	350.57	350.57		389.60	389.60		-			-	
		AREA 7 TOTAL			2,854.40		2,403.18			2,692.90		-			-	
		Freight Areas 1-7					-			-		-			-	
		Installation					1,085.00			1,122.50		-			-	
		Total Areas 1-7			25,445.93		22,704.57			25,252.65		-			-	
												-			-	
24	8-A	Single Pedestal Desk		267.24	6,413.76	226.84	5,444.16		252.15	6,051.60		-			-	
24	8-B	Task Chairs		84.32	2,023.68	71.57	1,717.68		79.55	1,909.20		-			-	
		Freight Area 8			-		-			-		-			-	
		Installation			-		360.00			420.00		-			-	
		Total Area 8			8,437.44		7,521.84			8,380.80		-			-	
												-			-	
80	9-A	Music Chair w/Tablet Arm,no bkrk	no bkrack / w/bookrack	77.20 / 99.65	6,176.00 / 7,972.00		-		90.85	7,268.00	116.75	9,340.00			-	
40	9-B	Music Stand	National 82MS	34.80	1,392.00		-	Must be purchased with chairs	15.00	600.00		-			-	
		Freight			-		-			320.00		595.00			-	
		Installation			-		-			400.00		-			-	
		Total Music			7,568.00 / 9,364.00		-			8,588.00		9,935.00			-	
												-			-	

Troy School District																
Furniture IAE																
Bid 9641																
			School Specialty			Kerr Albert Office Supply		Dew-El Corp.			Brainard Enterprises Inc.		Pepco Inc.			
Qty	Tag	Description	Alt	Unit Cost	Total	Unit Cost	Total	Alt.	Unit Cost	Total	Unit Price	Total	Alt.	Unit Price	Total	
1	10-A	Octagon Table	Fleetwood 99937-79	2,467.75	2,467.75	-	-						Pepco PB363636	2,107.00	2,107.00	
10	10-B	Science Tables	Fleetwood 70.3700	382.13	3,821.30	-	-						Pepco CS307236	352.00	3,520.00	
		Freight			-	-	-								175.00	
		Installation			-	-	-								300.00	
Total Physics					6,289.05										6,102.00	

Troy School District														
Furniture IAE														
Bid 9641														
			Creative Office Interiors			SBD Commercial Interiors			Interior Environments - A			Interior Environments - B		
Qty	Tag	Description	Alt	Unit Price	Total	Alt.	Unit Price	Total	Alt.	Unit Price	Total	Alt.	Unit Price	Total
1	1-A	Baserail Cover		-	-			-		-	-			-
2	1-B	Flagship Pedestal B/B		230.00	460.00	HLF Components	160.00	320.00		228.31	456.62	Allsteel		-
2	1-C	Flagship Pedestal F/F		230.00	460.00	HLF Components	146.00	292.00		228.31	456.62	Allsteel		-
2	1-D	Raceway Wall Starter		39.00	78.00			-		38.41	76.82	Allsteel		-
2	1-E	End Panel		67.00	134.00	HLF Components	96.00	192.00		66.15	132.30	Allsteel		-
1	1-F	3-Drawer Lateral		390.00	390.00	HLF Components	338.00	338.00		393.20	393.20	Allsteel		-
2	1-G	2-Drawer Lateral		297.00	594.00	HLF Components	266.00	532.00		299.33	598.66	Allsteel		-
1	1-H	60W Square Laminate Top		178.00	178.00	HLF Components	94.80	94.80		179.08	179.08	Allsteel		-
1	1-I	30W Square Laminate Top		102.00	102.00	HLF Components	56.80	56.80		102.95	102.95	Allsteel		-
2	1-J	Maestro Keyboard		178.00	356.00	HLF Components	45.00	90.00		176.67	353.34	Allsteel		-
2	1-K	Wall Track		38.00	76.00	HLF Components	21.00	42.00		37.13	74.26	Allsteel		-
1	1-L	Stack-on w/o doors		233.00	233.00			-		234.44	234.44	Allsteel		-
1	1-M	Flipper Doors		139.00	139.00	HLF Components	296.00	296.00		140.15	140.15	Allsteel		-
2	1-N	Shared Leg		107.00	214.00	HLF Components	38.00	76.00		58.90	117.80	Allsteel		-
1	1-O	Support Leg		59.00	59.00	HLF Components	72.00	72.00		58.90	58.90	Allsteel		-
1	1-P	Raceway Cover		10.00	10.00			-		9.38	9.38	Allsteel		-
1	1-Q	Universal Connector		42.00	42.00			-		41.40	41.40	Allsteel		-
1	1-R	Right Cove Worksurface		260.00	260.00	HLF Components	196.00	196.00		247.94	247.94	Allsteel		-
2	1-S	Countertop		165.00	330.00	HLF Components	101.00	202.00		164.30	328.60	Allsteel		-
1	1-T	Left Cove Worksurface		260.00	260.00	HLF Components	196.00	196.00		247.94	247.94	Allsteel		-
1	1-U	36W Rectangular Worksurface		139.00	139.00	HLF Components	64.00	64.00		127.59	127.59	Allsteel		-
1	1-V	66W Rectangular Worksurface		201.00	201.00	HLF Components	106.00	106.00		189.05	189.05	Allsteel		-

Troy School District														
Furniture IAE														
Bid 9641														
			Creative Office Interiors			SBD Commercial Interiors			Interior Environments - A			Interior Environments - B		
Qty	Tag	Description	Alt	Unit Price	Total	Alt.	Unit Price	Total	Alt.	Unit Price	Total	Alt.	Unit Price	Total
1	1-W	42W Rectangular Worksurface		152.00	152.00	HLF Components	72.00	72.00		140.40	140.40	Allsteel		-
2	1-X	Low Back Lumbar		372.00	744.00	9 to 5 Seating	432.00	864.00		375.02	750.04	Sit on It		-
4	1-Z	36W Cableway Fabric Panel		174.00	696.00	HLF Components	162.00	648.00		172.84	691.36	Allsteel		-
1	1-AA	Tackboard		124.00	124.00	HLF Components	102.00	102.00		136.26	136.26	Allsteel		-
1	1-BB	24W Cableway Fabric Panel		150.00	150.00			-		148.93	148.93	Allsteel		-
AREA 1 TOTAL					6,581.00			4,851.60			6,434.03			3,939.02
					-						-			
1	2-A	Laminate Top		263.00	263.00	Mayline Brighton	335.00	335.00		264.72	264.72	Artopex	427.94	427.94
1	2-B	Slab Base		176.00	176.00		-	-		177.78	177.78			-
6	2-C	Mang., Mid -Back, Swivel		276.00	1,656.00	9 to 5 Seating	230.00	1,380.00		278.57	1,671.42	Sit on It 681TA77	242.35	1,454.10
AREA 2 TOTAL					2,095.00			1,715.00			2,113.92			1,882.04
					-						-			
2	3-A	Floorstanding Pedestal B/B/F		218.00	436.00	Mayline Brighton	214.00	428.00		217.21	434.42	Artopex	425.74	851.48
2	3-B	Desk Shell		231.00	462.00	Mayline Brighton	195.00	390.00		229.59	459.18			-
2	3-C	Return Shell		156.00	312.00	Mayline Brighton	119.40	238.80		154.91	309.82	Artopex	315.45	630.90
2	3-D	Floorstanding Pedestal F/F		218.00	436.00	Mayline Brighton	192.60	385.20		217.21	434.42			-
2	3-E	Stack on, 4 door		323.00	646.00	Mayline Brighton	289.00	578.00		355.05	710.10	Artopex	349.41	698.82
2	3-F	Back Enclosure		74.00	148.00		-	-		73.40	146.80			-
2	3-G	Maestro Keyboard		178.00	356.00	Mayline Brighton	45.00	90.00		176.67	353.34	Artopex	181.06	362.12
2	3-H	High Back Lumbar		394.00	788.00	9 to 5 Seating	456.00	912.00		396.65	793.30	Sit on It 40AEA17	373.65	747.30
2	3-I	Tackboard		93.00	186.00	Mayline Brighton	87.00	174.00		92.17	184.34	Artopex	120.88	241.76
AREA 3 TOTAL					3,770.00			3,196.00			3,825.72			3,532.38
					-						-			

Troy School District															
Furniture IAE															
Bid 9641															
				Creative Office Interiors			SBD Commercial Interiors			Interior Environments - A			Interior Environments - B		
Qty	Tag	Description		Alt	Unit Price	Total	Alt.	Unit Price	Total	Alt.	Unit Price	Total	Alt.	Unit Price	Total
1	4-A	Floorstanding Pedestal B/B/F			219.00	219.00	Mayline Brighton	214.00	214.00		217.21	217.21	Artopex	425.74	425.74
1	4-B	Floorstanding Pedestal F/F			219.00	219.00	Mayline Brighton	192.00	192.00		217.21	217.21	Artopex	277.51	277.51
1	4-C	Credenza Shell			216.00	216.00	Mayline Brighton	174.00	174.00		214.65	214.65	Artopex	226.76	226.76
1	4-D	Bridge			117.00	117.00	Mayline Brighton	107.00	107.00		116.50	116.50	Artopex	116.92	116.92
1	4-E	Desk Shell			231.00	231.00	Mayline Brighton	195.00	195.00		229.59	229.59		-	-
1	4-F	Stack on, 4 door			323.00	323.00	Mayline Brighton	289.00	289.00		355.05	355.05	Artopex	349.41	349.41
1	4-G	Back Enclosure			74.00	74.00		-	-		73.40	73.40		-	-
1	4-H	Maestro Keyboard			178.00	178.00	Mayline Brighton	45.00	45.00		176.67	176.67	Artopex	181.06	181.06
2	4-I	Guest Chair			186.00	372.00	9 to 5 Seating	186.00	372.00		187.30	374.60	Sit on It 18Swirl	153.88	307.76
1	4-J	High Back Lumbar			394.00	394.00	9 to 5 Seating	456.00	456.00		396.65	396.65	Sit on It 40AEA17	373.65	373.65
1	4-K	Tackboard			93.00	93.00	Mayline Brighton	87.00	87.00		92.17	92.17	Artopex	120.88	120.88
		AREA 4 TOTAL				2,436.00		2,131.00			2,463.70			2,379.69	
						-					-				
1	5-A	Flagship Pedestal B/B			230.00	230.00	HLF Components	160.00	160.00		228.31	228.31	Allsteel	-	-
1	5-B	Flagship Pedestal F/F			230.00	230.00	HLF Components	146.00	146.00		228.31	228.31		-	-
1	5-C	Raceway			39.00	39.00	HLF Components	-	-		38.41	38.41		-	-
1	5-D	End Panel			67.00	67.00	HLF Components	96.00	96.00		66.15	66.15		-	-
1	5-E	2-Drawer Lateral			381.00	381.00	HLF Components	318.00	318.00		383.67	383.67		-	-
1	5-F	Square Edge Laminate Top			140.00	140.00	HLF Components	67.00	67.00		141.01	141.01		-	-
1	5-G	Maestro Keyboard			178.00	178.00	HLF Components	45.00	45.00		176.67	176.67		-	-
2	5-H	Wall Track			37.00	74.00			-		37.13	74.26		-	-
1	5-I	Raceway End Cover			10.00	10.00			-		9.38	9.38		-	-
1	5-J	Right Cove Worksurface			260.00	260.00	HLF Components	196.00	196.00		247.94	247.94		-	-

Troy School District														
Furniture IAE														
Bid 9641														
			Creative Office Interiors			SBD Commercial Interiors			Interior Environments - A			Interior Environments - B		
Qty	Tag	Description	Alt	Unit Price	Total	Alt.	Unit Price	Total	Alt.	Unit Price	Total	Alt.	Unit Price	Total
1	5-K	Countertop		165.00	165.00	HLF Components	101.00	101.00		164.30	164.30			-
1	5-L	Rectangular Worksurface		139.00	139.00	HLF Components	64.00	64.00		127.59	127.59			-
2	5-M	Guest Chair		186.00	372.00	9 to 5 Seating	186.00	372.00		187.30	374.60	Sit On It		-
1	5-N	Low Back Lumbar		372.00	372.00	9 to 5 Seating	432.00	432.00		375.02	375.02			-
2	5-O	Cableway Fabric Panel		174.00	348.00	HLF Components	162.00	324.00		172.84	345.68	Sit On It		-
		AREA 5 TOTAL			3,005.00			2,321.00			2,981.30			1,981.34
-														
1	6-A	Round Laminate Top		143.00	143.00	Mayline Brighton	190.00	190.00		143.60	143.60	Artopex	204.71	204.71
1	6-B	Floorstanding Pedestal B/B/F		219.00	219.00	Mayline Brighton	214.00	214.00		217.21	217.21	Artopex	425.74	425.74
1	6-C	Floorstanding Pedestal F/F		219.00	219.00	Mayline Brighton	192.00	192.00		217.21	217.21	Artopex	324.71	324.71
1	6-D	Stack On Storage		363.00	363.00	Mayline Brighton	289.00	289.00		361.45	361.45	Artopex	448.68	448.68
1	6-E	Return Shell		166.00	166.00	Mayline Brighton	119.00	119.00		165.15	165.15		-	-
1	6-F	Back Enclosure		81.00	81.00			-		80.65	80.65		-	-
1	6-G	X-Base		131.00	131.00			-		132.36	132.36		-	-
1	6-H	Desk Shell		231.00	231.00	Mayline Brighton	195.00	195.00		229.59	229.59		-	-
1	6-I	Maestro Keyboard		178.00	178.00	Mayline Brighton	45.00	45.00		176.67	176.67	Artopex	181.06	181.06
2	6-J	Guest Chair		186.00	372.00	9 to 5 Seating	186.00	372.00		187.30	374.60	Sit on It 18 Swirl	153.88	307.76
1	6-K	Tackboard		98.00	98.00	Mayline Brighton	87.00	87.00		97.30	97.30	Artopex	131.04	131.04
1	6-L	Low Back Lumbar		372.00	372.00	9 to 5 Seating	432.00	432.00		375.02	375.02	Sit on It 40AA17	332.24	332.24
		AREA 6 TOTAL			2,573.00			2,135.00			2,570.81			2,355.94
-														
1	7-A	Round Laminate Top		143.00	143.00	Mayline Brighton	190.00	190.00		143.60	143.60	Artopex	204.71	204.71
1	7-B	Floorstanding Pedestal B/B/F		218.00	218.00	Mayline Brighton	214.00	214.00		217.21	217.21	Artopex	425.74	425.74
1	7-C	Floorstanding Pedestal F/F		218.00	218.00	Mayline Brighton	192.00	192.00		217.21	217.21	Artopex	324.71	324.71
1	7-D	Stack On Storage		364.00	364.00	Mayline Brighton	289.00	289.00		361.45	361.45	Artopex	448.68	448.68

Troy School District														
Furniture IAE														
Bid 9641														
			Creative Office Interiors			SBD Commercial Interiors			Interior Environments - A			Interior Environments - B		
Qty	Tag	Description	Alt	Unit Price	Total	Alt.	Unit Price	Total	Alt.	Unit Price	Total	Alt.	Unit Price	Total
1	7-E	Return Shell		166.00	166.00	Mayline Brighton	119.00	119.00		165.15	165.15	Artopex	-	-
1	7-F	Back Enclosure		81.00	81.00			-		80.65	80.65	Artopex	-	-
1	7-G	X-Base		131.00	131.00			-		132.36	132.36	Artopex	-	-
1	7-H	Desk Shell		231.00	231.00	Mayline Brighton	195.00	195.00		229.59	229.59	Artopex	-	-
1	7-I	Maestro Keyboard		178.00	178.00	Mayline Brighton	45.00	45.00		176.67	176.67	Artopex	181.06	181.06
2	7-J	Guest Chair		186.00	372.00	9 to 5 Seating	186.00	372.00		187.30	374.60	Sit on It 18 Swirl	153.88	307.76
1	7-K	Tackboard		98.00	98.00	Mayline Brighton	87.00	87.00		97.30	97.30	Artopex	131.04	131.04
1	7-L	Low Back Lumbar		372.00	372.00	9 to 5 Seating	432.00	432.00		375.02	375.02	Sit on It 40A A17	332.24	332.24
		AREA 7 TOTAL			2,572.00			2,135.00			2,570.81			2,355.94
		Freight Areas 1-7			-			-			-			1,200.00
		Installation			1,380.00			-			1,200.00			1,200.00
		Total Areas 1-7			24,412.00			18,484.60			24,160.29			20,826.35
					-			-			-			-
24	8-A	Single Pedestal Desk			-	HLF Components	216.00	5,184.00		242.66	5,823.84		251.81	6,043.44
24	8-B	Task Chairs			-	9 to 5 Seating	108.00	2,592.00		76.56	1,837.44		79.44	1,906.56
		Freight Area 8			-			-			-			-
		Installation			-			-			650.00			650.00
		Total Area 8			8,356.00			7,776.00			8,311.28			8,600.00
					-			-			-			-
80	9-A	Music Chair w/Tablet Arm,no bkrk	Wenger	157.00	12,560.00		95.00	7,600.00		110.00	8,800.00		110.00	8,800.00
40	9-B	Music Stand		74.00	2,960.00	NPS	37.00	1,480.00	NPS 82	39.98	1,599.20	NPS 82	39.98	1,599.20
		Freight			1,172.00			-			359.00			359.00
		Installation			460.00			-			400.00			400.00
		Total Music			17,152.00			9,080.00			11,158.20			11,158.20
					-			-			-			-

Troy School District														
Furniture IAE														
Bid 9641														
			Creative Office Interiors			SBD Commercial Interiors			Interior Environments - A			Interior Environments - B		
Qty	Tag	Description	Alt	Unit Price	Total	Alt.	Unit Price	Total	Alt.	Unit Price	Total	Alt.	Unit Price	Total
1	10-A	Octagon Table			-	HLF Casework	2,525.00	2,525.00	Diversified 1642KF-MOD	3,423.00	3,423.00	Diversified 1642KF-Mod	3,423.00	3,423.00
10	10-B	Science Tables			-	Shain Shop Built	352.00	3,520.00	Diversified P7151K36N	370.99	3,709.90	Diversified P7151k36N	370.99	3,709.90
		Freight			-			-			500.00			500.00
		Installation			-			-			400.00			400.00
Total Physics					-		6,045.00			8,032.90			8,032.90	

The following companies were also sent invitations to bid:

E-Quip Company: No Response

Highsmith: No Bid

NBS: No Response

Office Depot: No Response

Office Products Outlet: No Response

West Michigan Office Interiors: LATE