

Hunters Creek Elementary School

Replacement School PAT Meeting #4 – 02.20.19



pfluger

Hunters Creek Elementary School

PAT Charge

The goal of the PAT is to ensure that parents, staff and community members have the opportunity to take part in the planning and design of the new school.

The PAT members will serve as communicators to and from the community during the schematic design and design development phases of the project and participate in discussions that will lead to recommendations. The PAT concludes its work once construction begins.

All recommendations must be in alignment with the District's Educational Specifications and Design and Construction Standards.



Hunters Creek Elementary School

PAT Charge (continued)

The PAT will **reach a proposed recommendation through consensus**.

Any concerns identified by the PAT members should immediately be brought to the attention of the SBISD Project Manager.

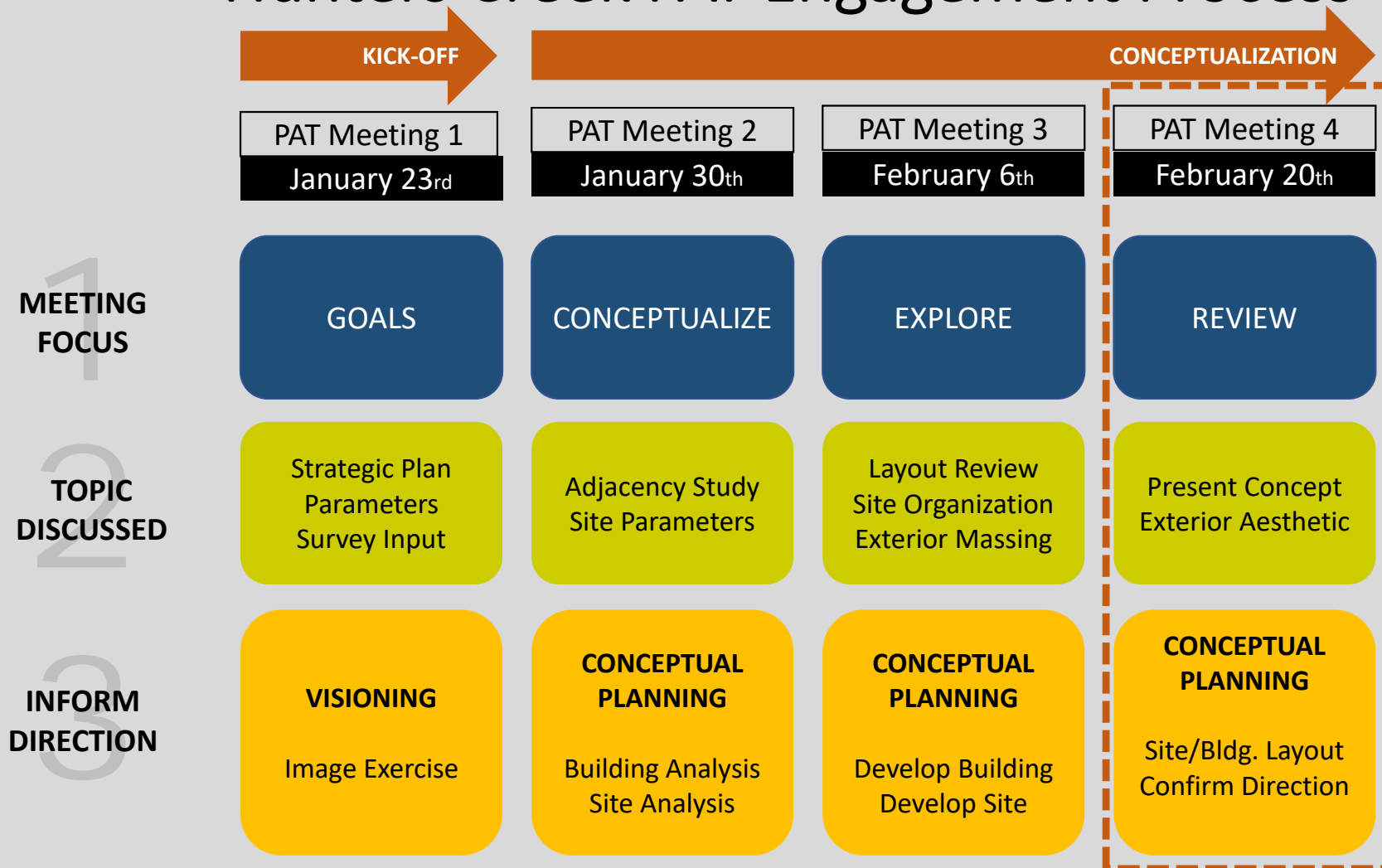
These **recommendations will be presented** by the project's architects:

1. to the **Superintendent of Schools**, and based on approval from the Superintendent,
2. to the **Board of Trustees** for their approval.

The Board of Trustees may act upon the recommendations developed with PAT input by approving, amending, altering or not approving all or any part of the recommendations.



Hunters Creek PAT Engagement Process



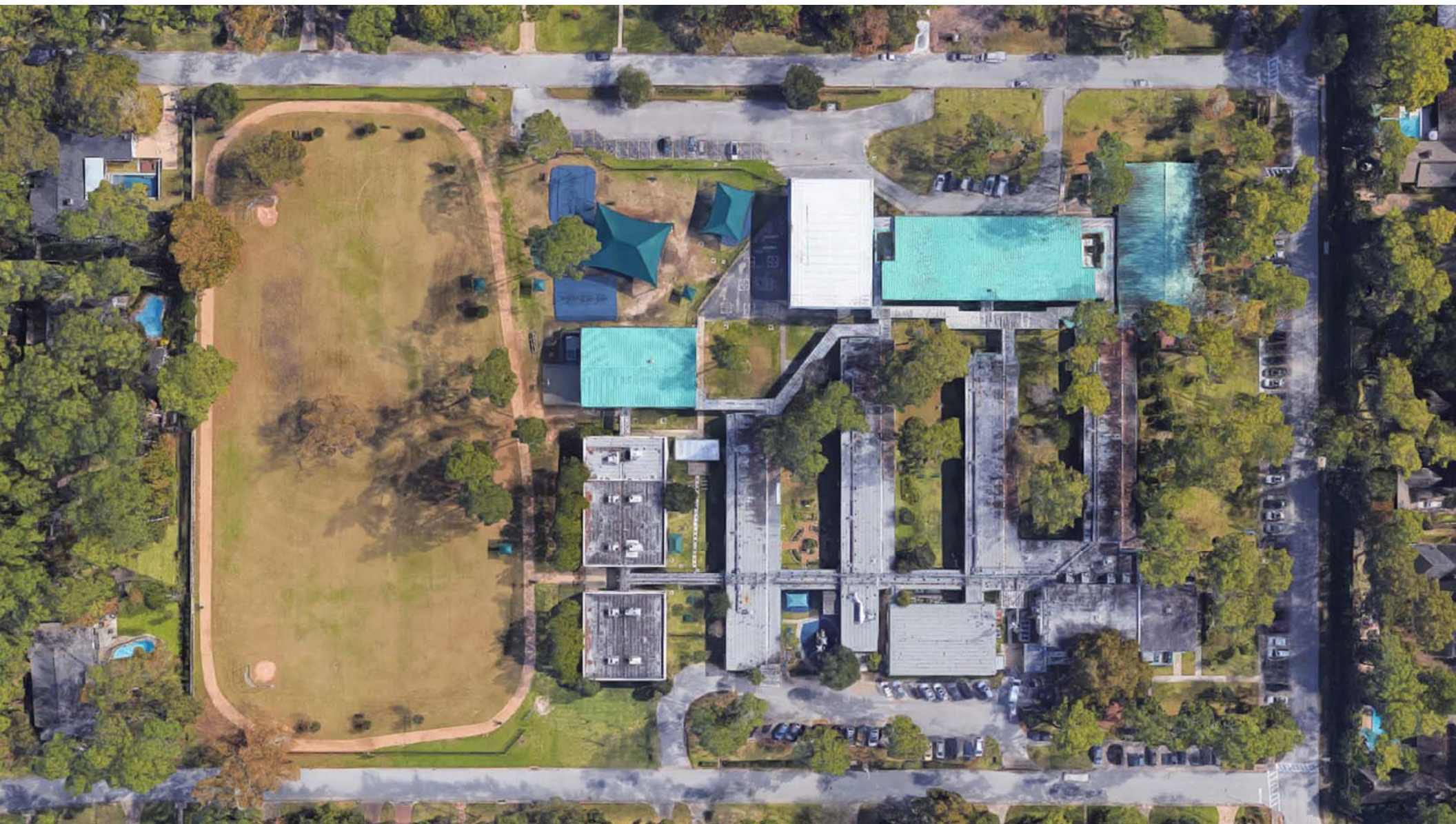
Hunters Creek PAT Engagement Process



Hunters Creek Elementary School

PAT Meeting #4

- Meeting #3 feedback - recap
- Review new layout options (4)
- Define design direction
- Building exterior concept



Option 1

Pros

- Courtyard zones
- Re-use of gym structure
- Possible after hours Library usage

Cons

- Play field trail got smaller
- Parking far from main entrance
- South portion of site under utilized
- Classrooms facing directly at drop-off areas



Option 2

Pros

- All classrooms together
- Library good for after hours use

Cons

- Library not integrated in academics
- Not as much play fields/track
- New Gymnasium
- Distance to Parent Drop-off
(Detached from classroom wings)
- Beinhorn Rd. not addressed
(Front of the School?)



Option 3

Pros

- Lower Scale/Height
- All Classrooms on Ground Level
- Centralized Shared Areas
(Library, Flex rooms, Arts & Science)

Cons

- Most Expensive Option
(will require additional reductions)
- Smaller Courtyard
- Limited Exterior Views
- Not all Classrooms have Windows
- Restrictive Parking – not enough



Option 4

Pros

- Centralized Shared Areas
(Library, Flex rooms, Arts & Science)
- Connection of Courtyard to Fields
- Kinder Playground integrated in Courtyard (safe and central)

Cons

- New Gymnasium - cost
- Dining and Gymnasium are separated (no overflow option)
- Sp. Ed. detached from Admin.



Option 5

Pros

- Centralized Shared Areas
(Library, Flex rooms, Arts & Science)
- Direct Courtyard Access
- Controlled used of Library
(after hours)
- Re-Use of Existing Gym
- Circulation through grade
level project areas

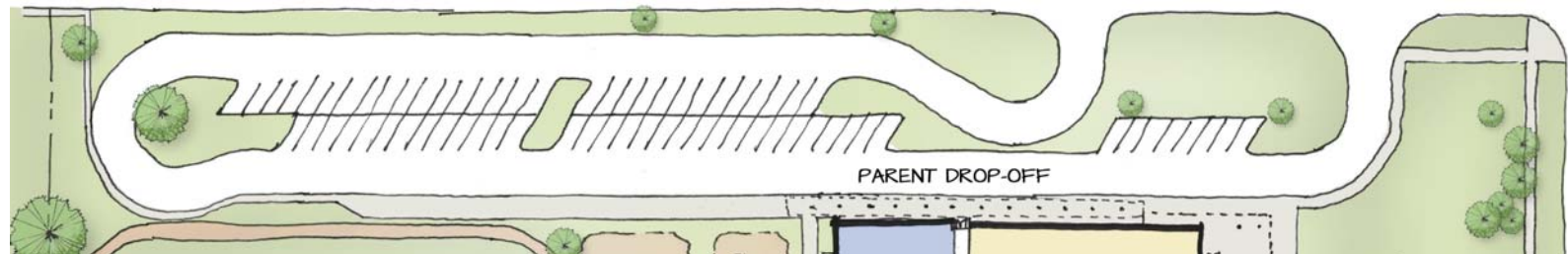
Cons

- Scale within Courtyard
- Distance from Parking to
Administration/Entry

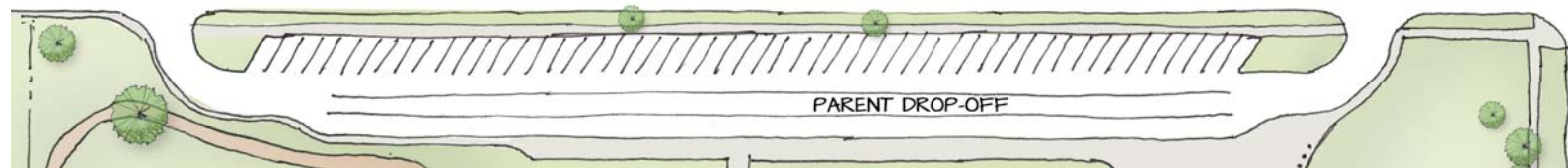


Drop-off

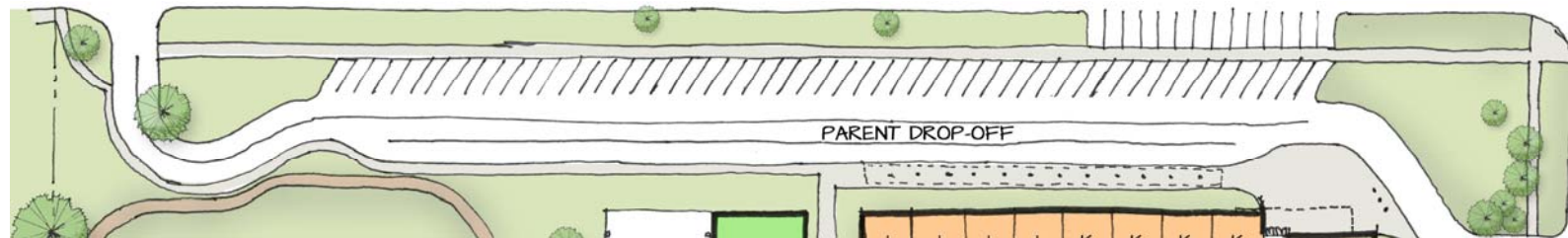
Option 2



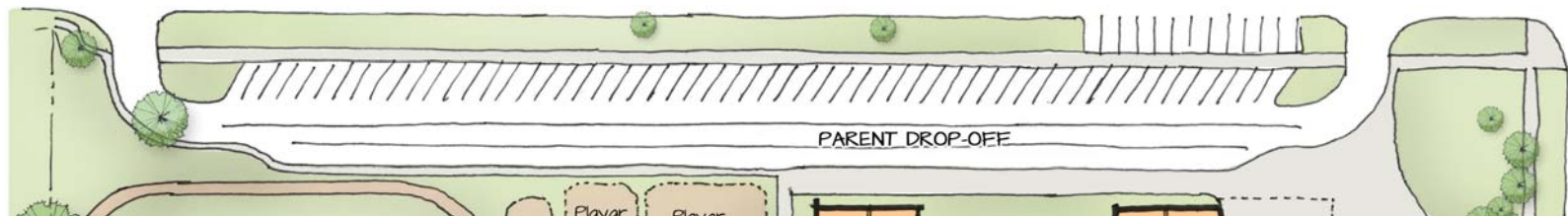
Option 3



Option 4



Option 5



Cafeteria and Gymnasium

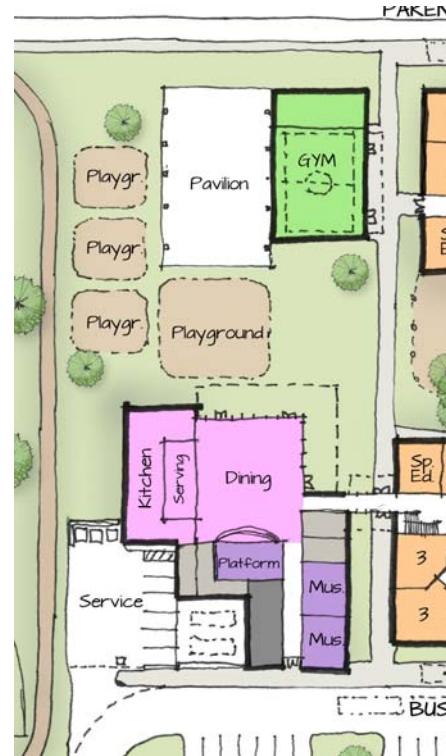
Option 2 – (New Gym)



Option 3 – (Exist. Gym)



Option 4 – (New Gym)



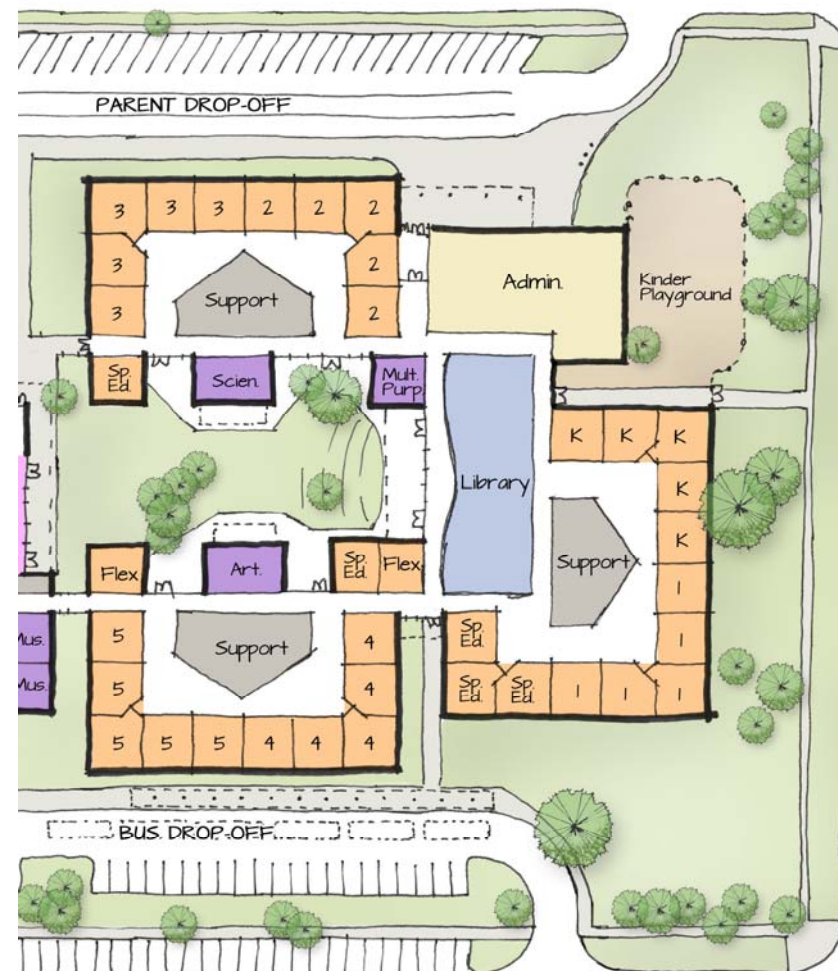
Option 5 – (Exist. Gym)



Academics



Option 2



Option 3

Academics

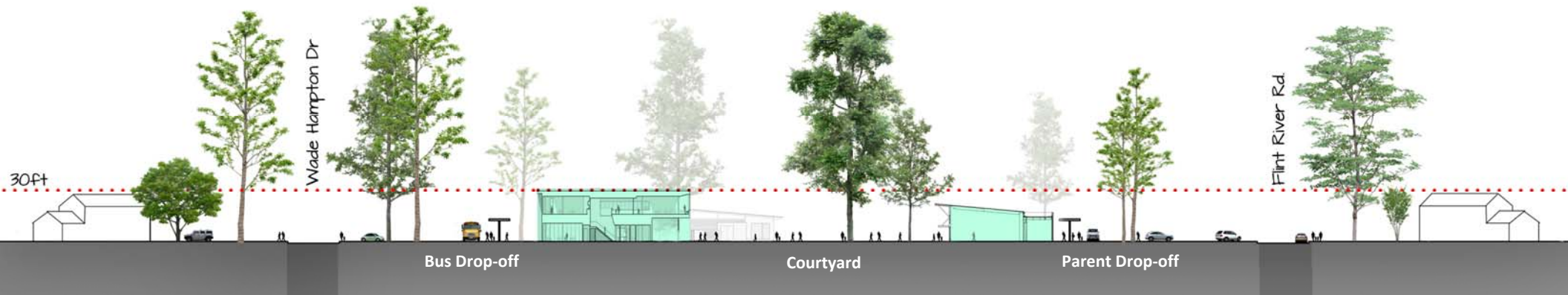


Option 4

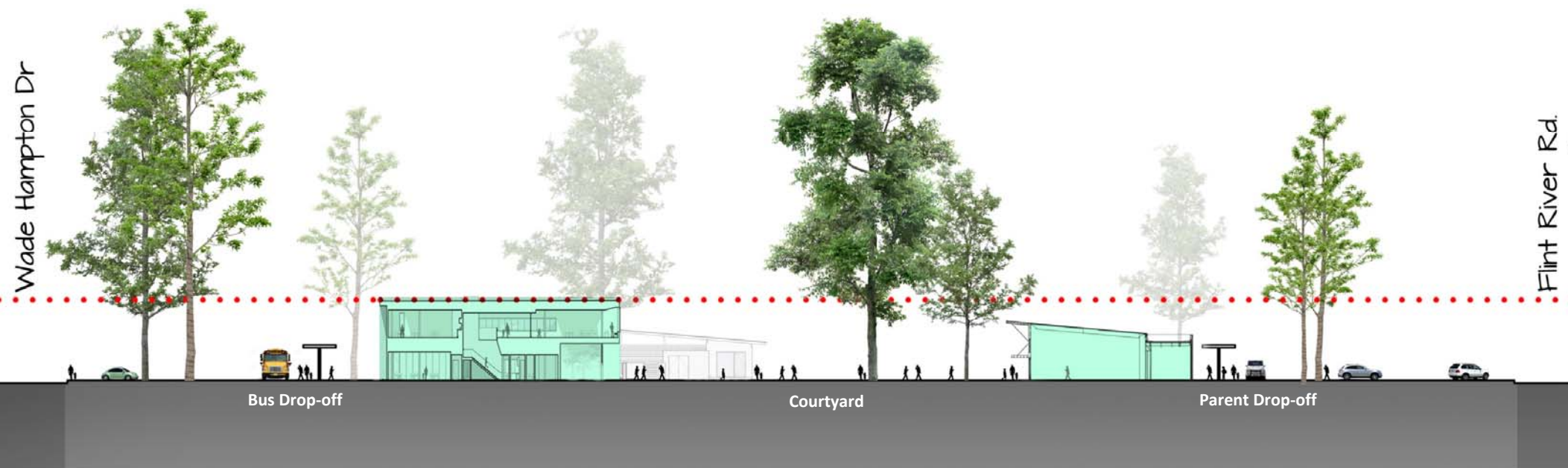


Option 5

Site Section



Site Section Enlarged



Exterior Materials and Feel



Exterior Materials and Feel



Exterior Materials and Feel



Hunters Creek Elementary School

Next Steps

PAT Meeting Schedule: all meetings are at 3:15pm at HCE

■ Meeting #4	February 20, 2019	Final Design Concept Presentation
■ Meeting #5	March 20, 2019	Schematic Progress Update
■ Meeting #6	May 15, 2019	Design Development Update
■ Meeting #7	August 14, 2019	Construction Documents Update
■ Meeting #8	November 6, 2019	Final Review Presentation



QUESTIONS?

pfluger