

# Hunters Creek Elementary School

## Replacement School PAT Meeting #3 – 02.06.19



**pfluger**

# Hunters Creek Elementary School

## PAT Charge

The goal of the PAT is to ensure that parents, staff and community members have the opportunity to take part in the planning and design of the new school.

The PAT members will serve as communicators to and from the community during the schematic design and design development phases of the project and participate in discussions that will lead to recommendations. The PAT concludes its work once construction begins.

All recommendations must be in alignment with the District's Educational Specifications and Design and Construction Standards.



# Hunters Creek Elementary School

## PAT Charge (continued)

The PAT will **reach a proposed recommendation through consensus**.

Any concerns identified by the PAT members should immediately be brought to the attention of the SBISD Project Manager.

These **recommendations will be presented** by the project's architects:

1. to the **Superintendent of Schools**, and based on approval from the Superintendent,
2. to the **Board of Trustees** for their approval.

**The Board of Trustees may act upon the recommendations developed with PAT input by approving, amending, altering or not approving all or any part of the recommendations.**



# Hunters Creek PAT Engagement Process



# Hunters Creek PAT Engagement Process



# Hunters Creek Elementary School

## PAT Meeting #3

- Cube Exercise - Analysis
- Design Considerations
- Design Approach
- Proposed Schematic Layout

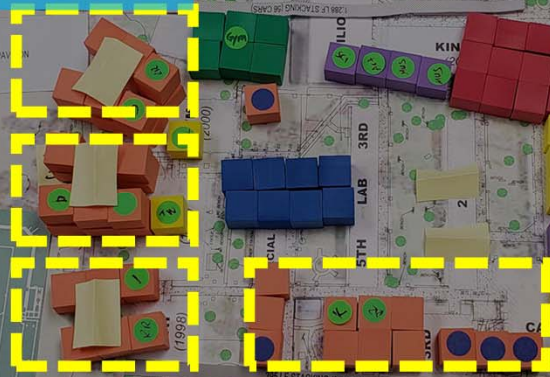








## Academics



### SCHEME A – Academic features

- 4 academic “pods”
- 2-story away from street edge
- Kinder + Sp. Ed closer to admin
- In-between project areas
- Centered courtyard
- In-between courtyards
- Student + Faculty support within pod

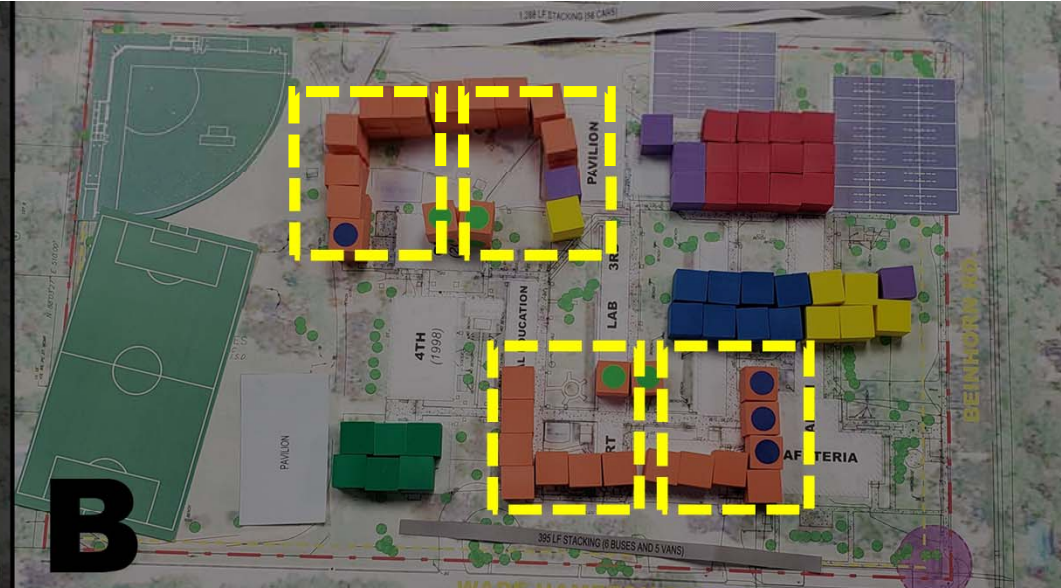




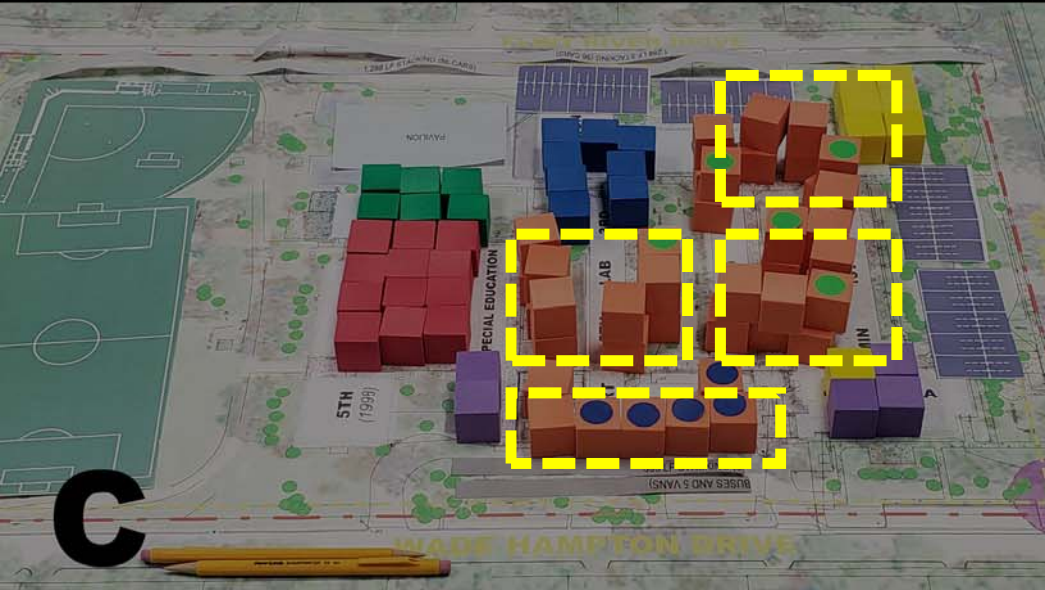
## Academics

### SCHEME B – Academic features

- 4 academic “pods”
- 4<sup>th</sup> and 5<sup>th</sup> grades on second level
- Paired pods for flexibility
- Student + Faculty support within pod
- Classrooms surrounding project area
- Classrooms facing courtyard

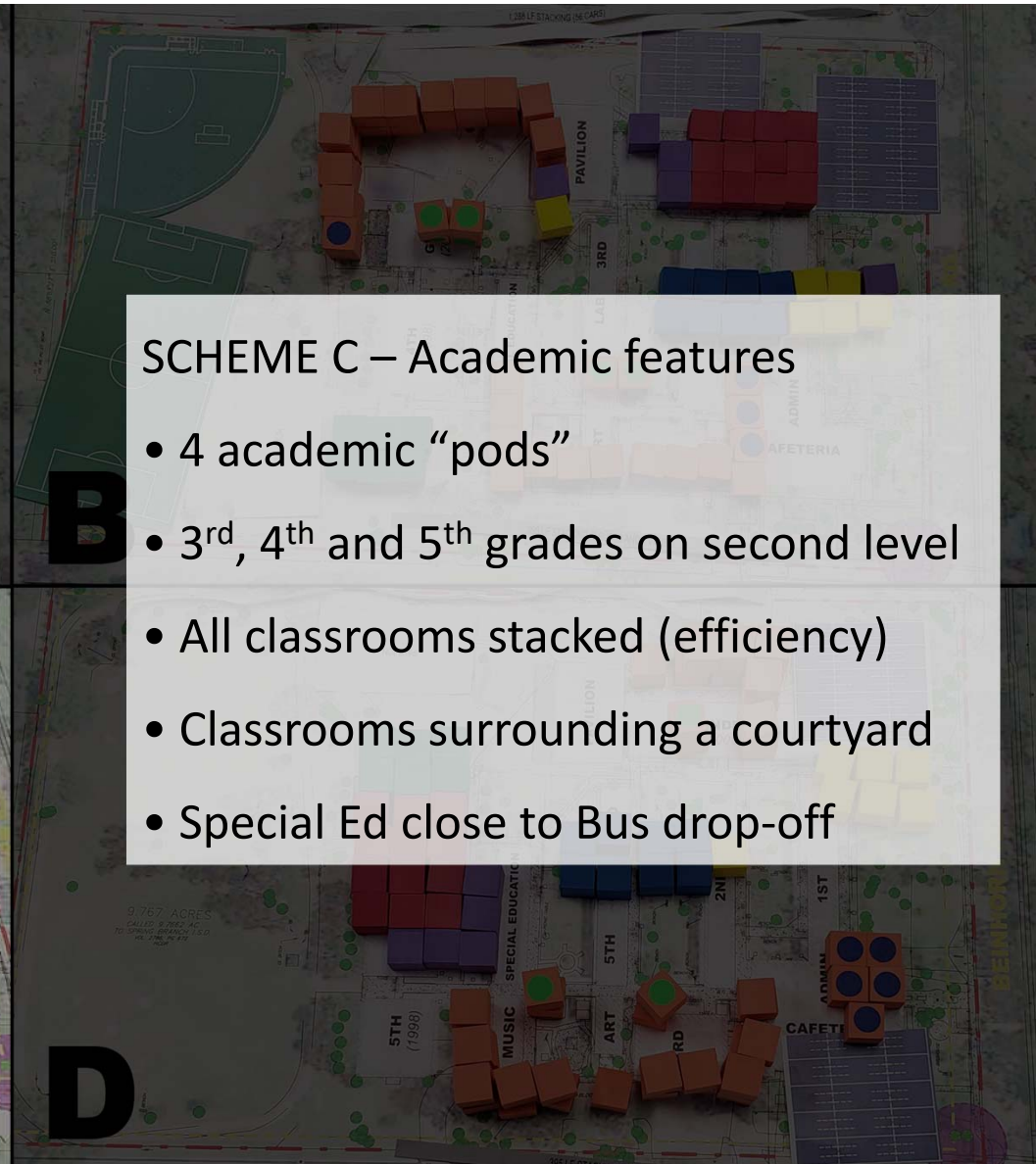


## Academics



### SCHEME C – Academic features

- 4 academic “pods”
- 3<sup>rd</sup>, 4<sup>th</sup> and 5<sup>th</sup> grades on second level
- All classrooms stacked (efficiency)
- Classrooms surrounding a courtyard
- Special Ed close to Bus drop-off

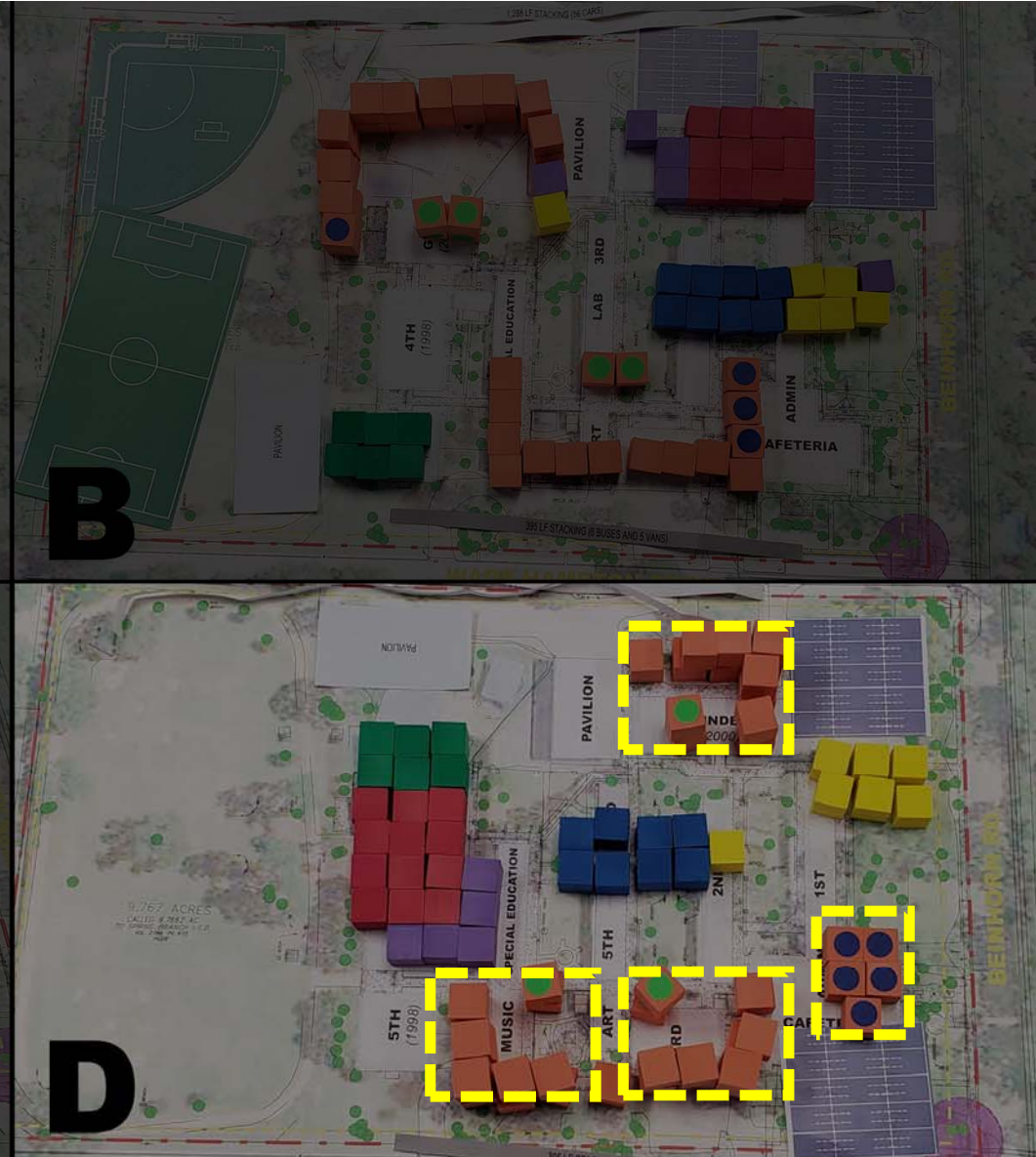




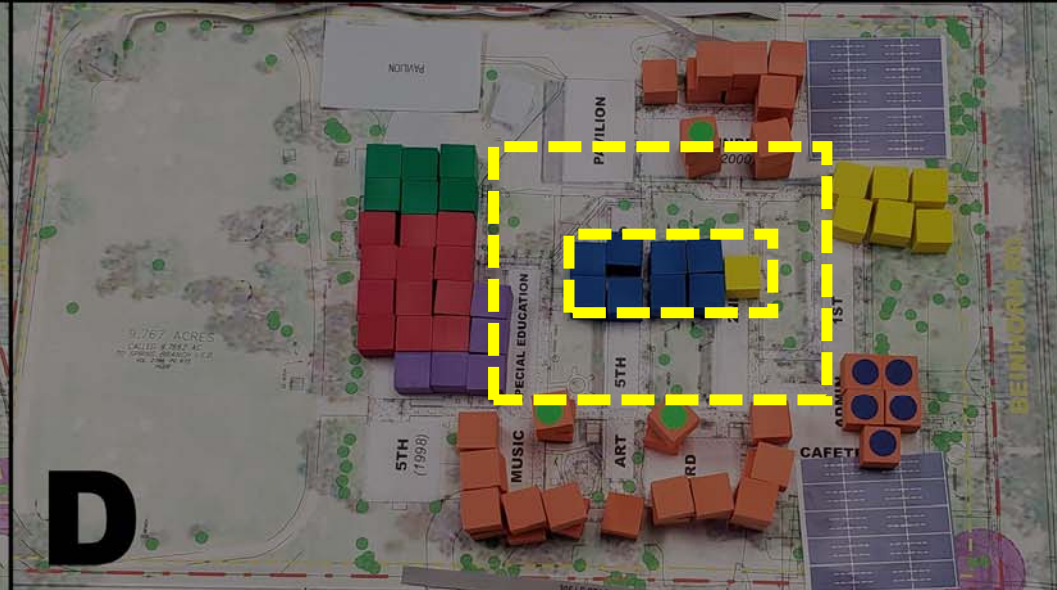
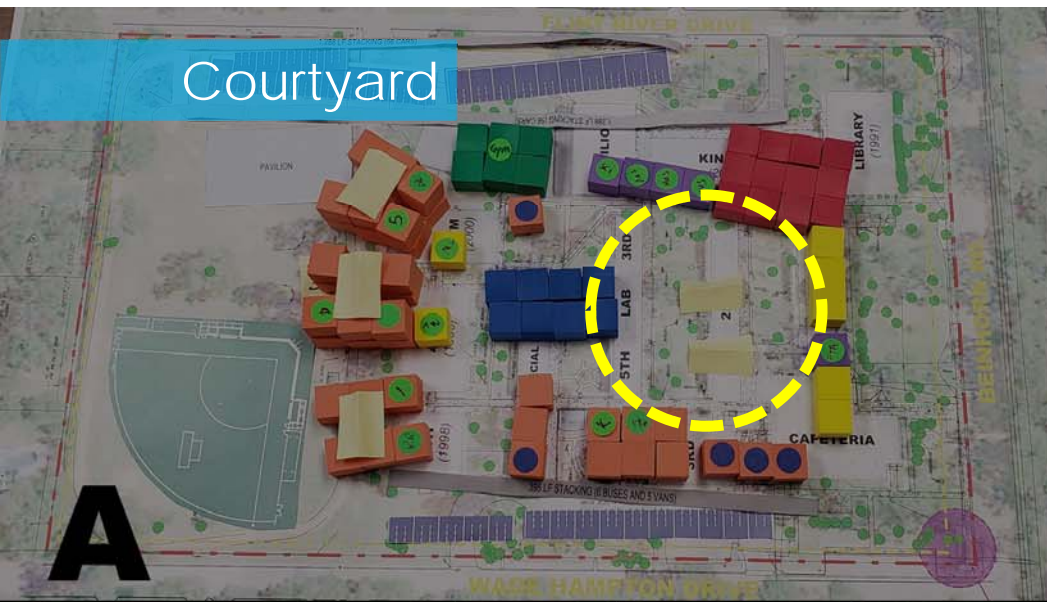
## Academics

### SCHEME D – Academic features

- 4 academic “pods”
- 3<sup>rd</sup>, 4<sup>th</sup> and 5<sup>th</sup> grades on second level
- All classrooms stacked (efficiency)
- Paired pods for flexibility
- Student + Faculty support within pod
- Classrooms surrounding project area
- Classrooms surrounding the courtyard









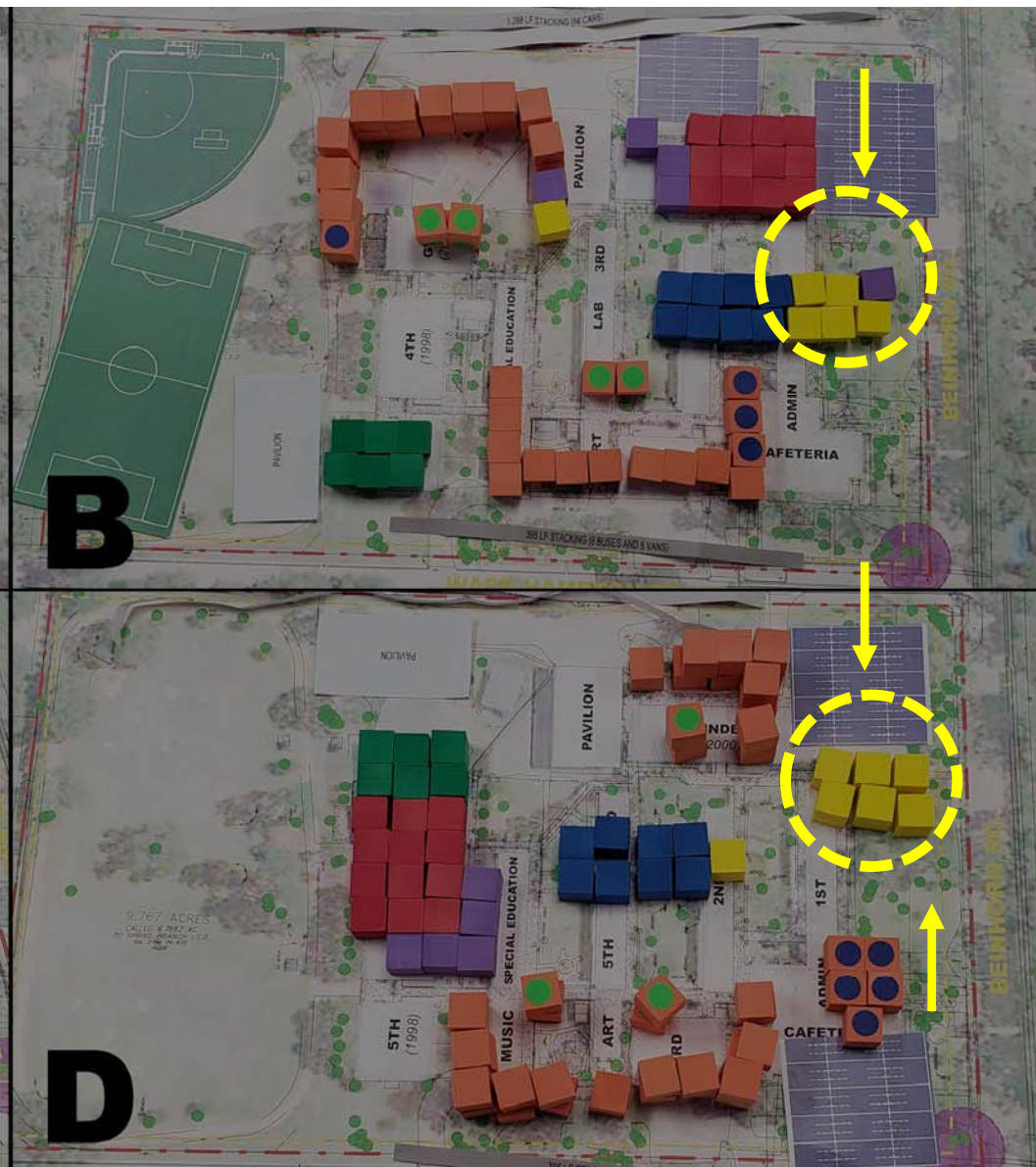
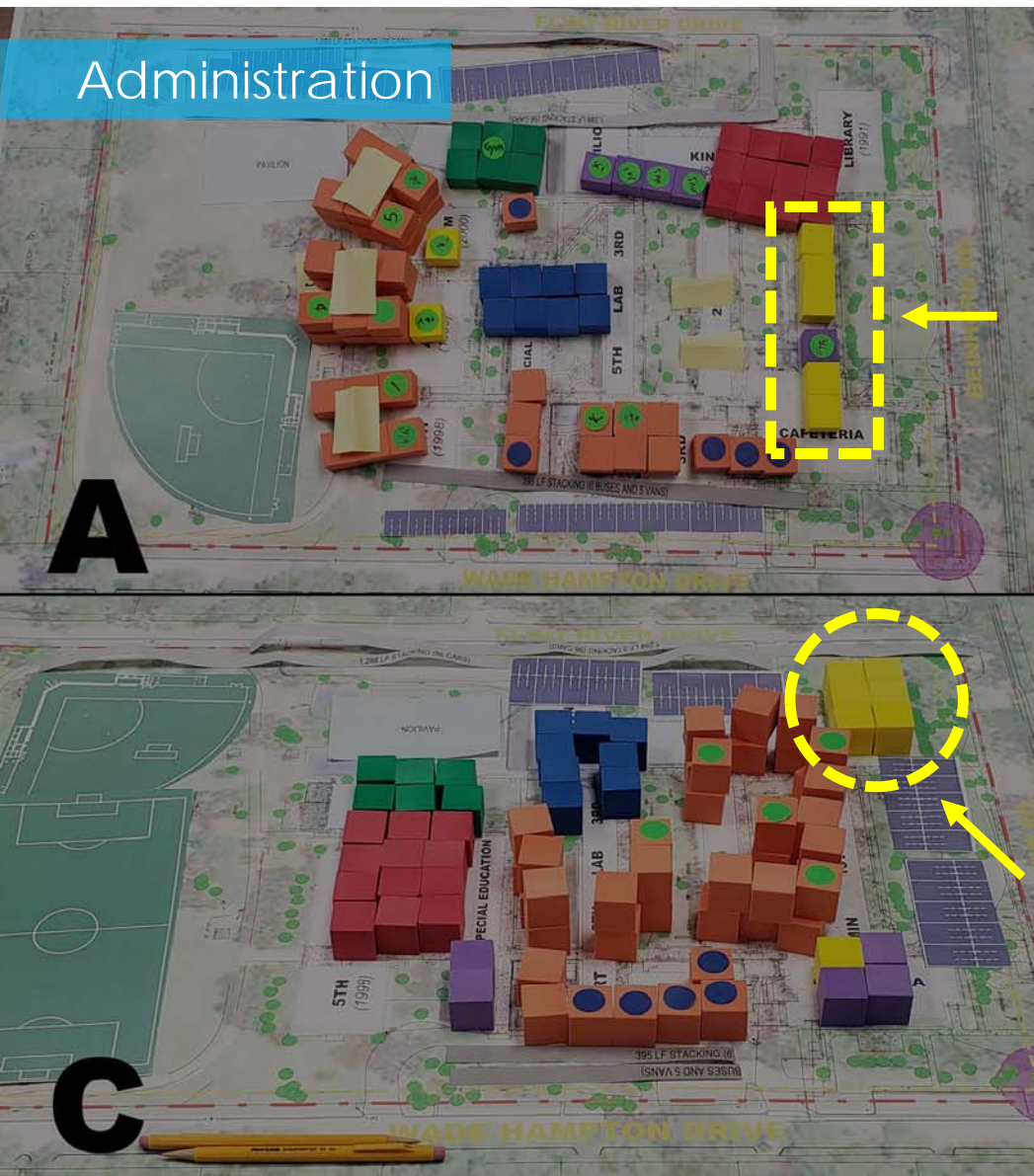
Administration

A

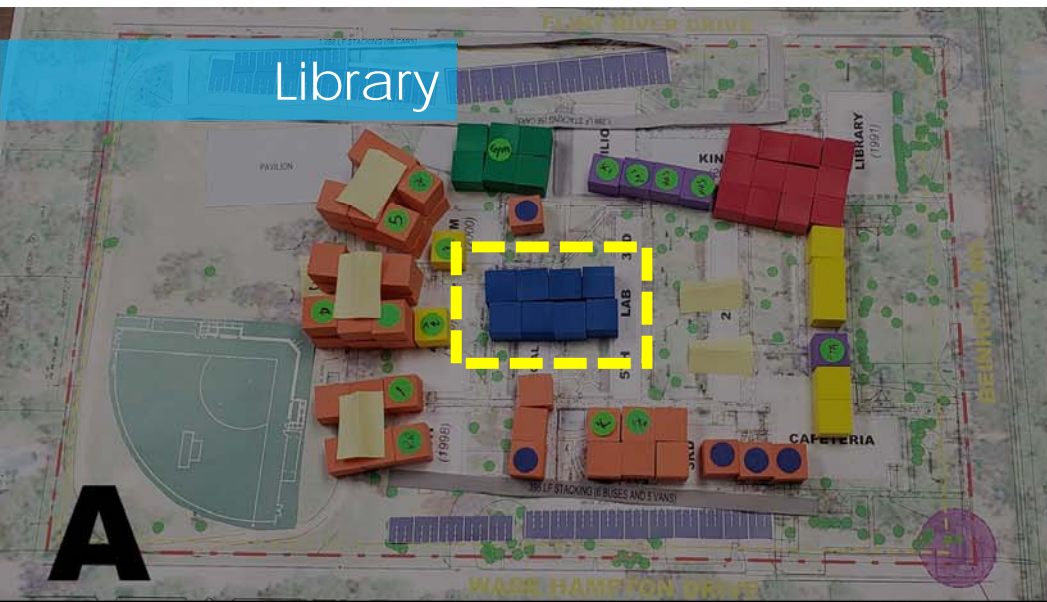
B

C

D









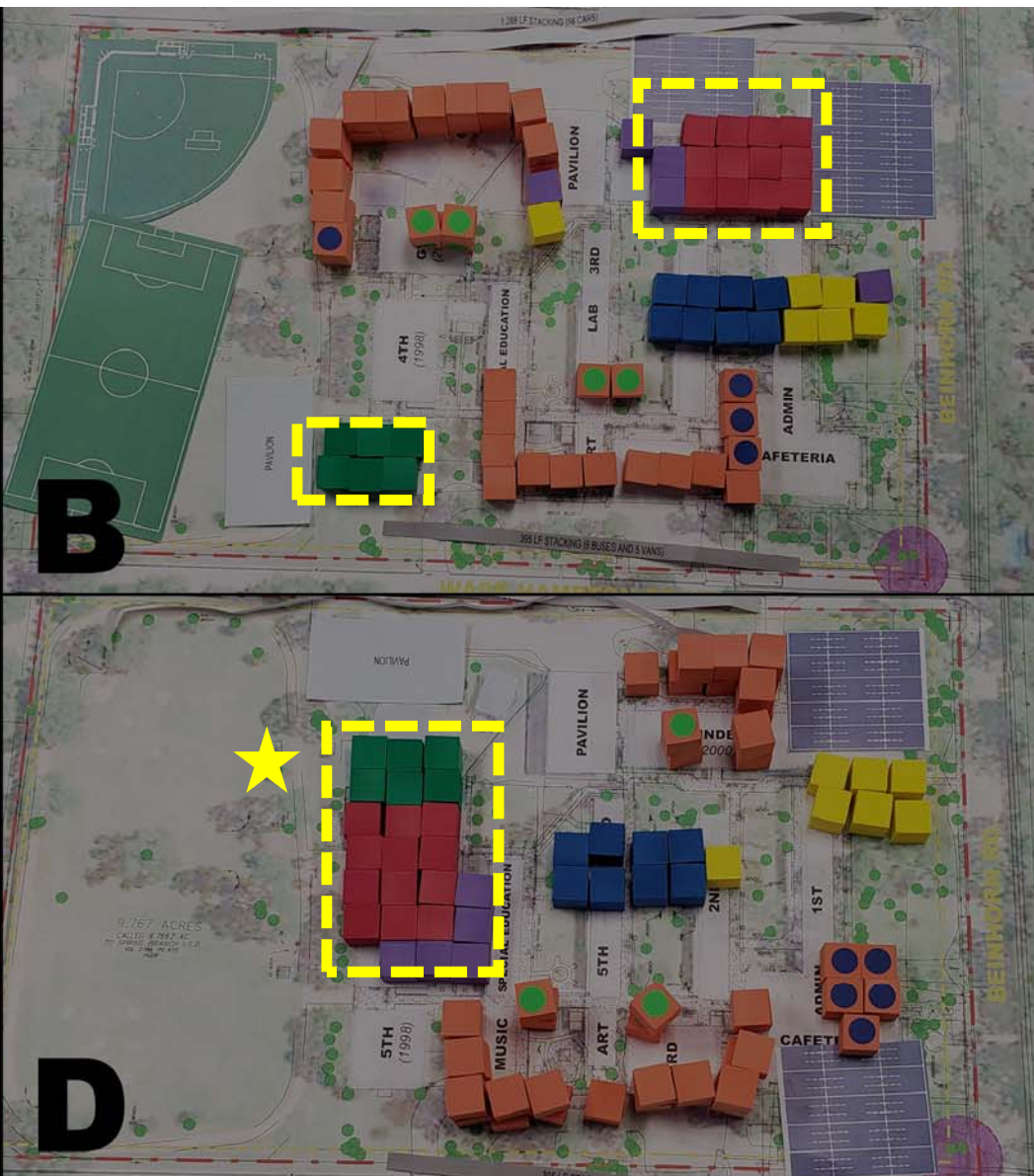
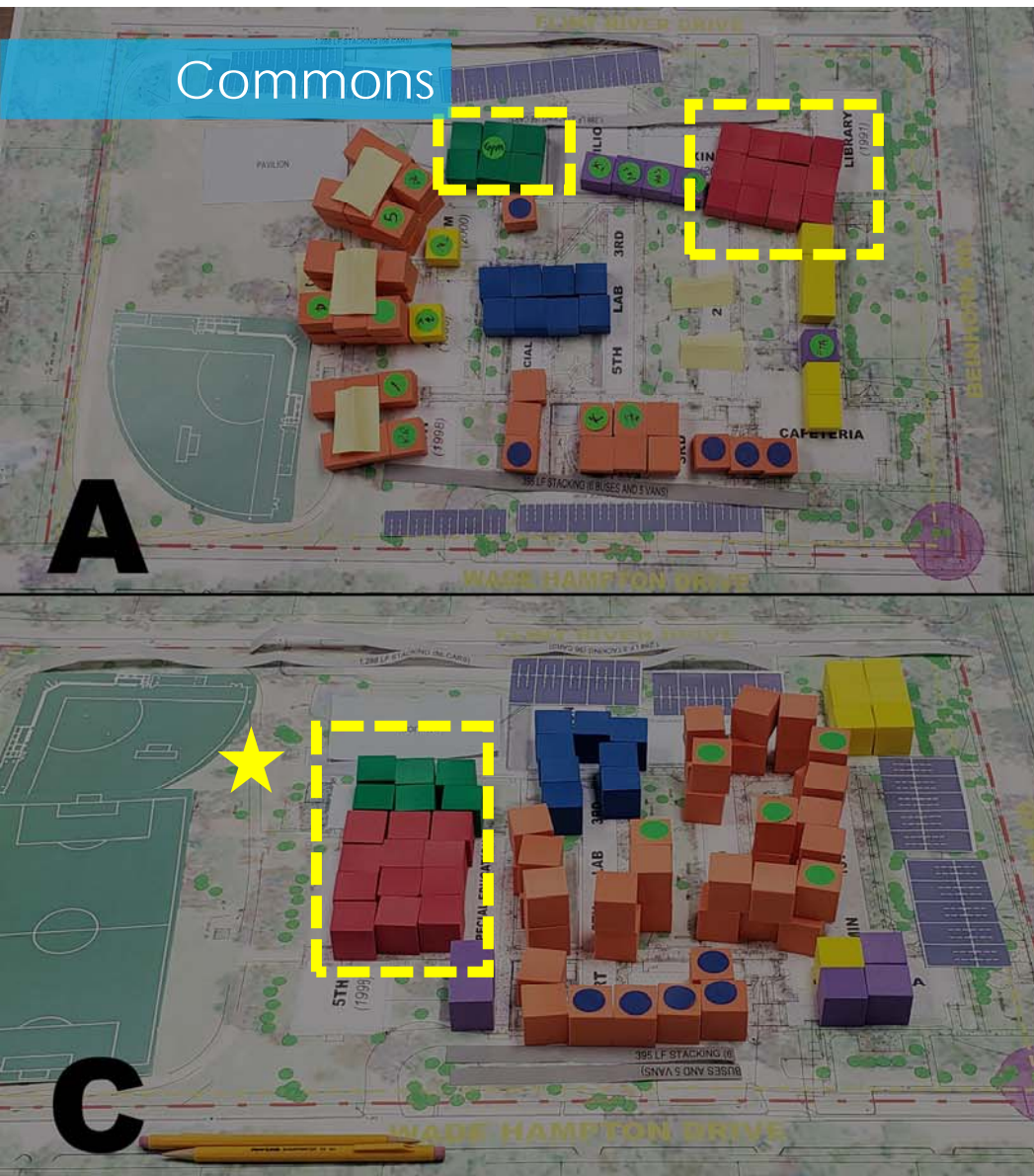
Commons

A

B

C

D



# Hunters Creek Elementary School

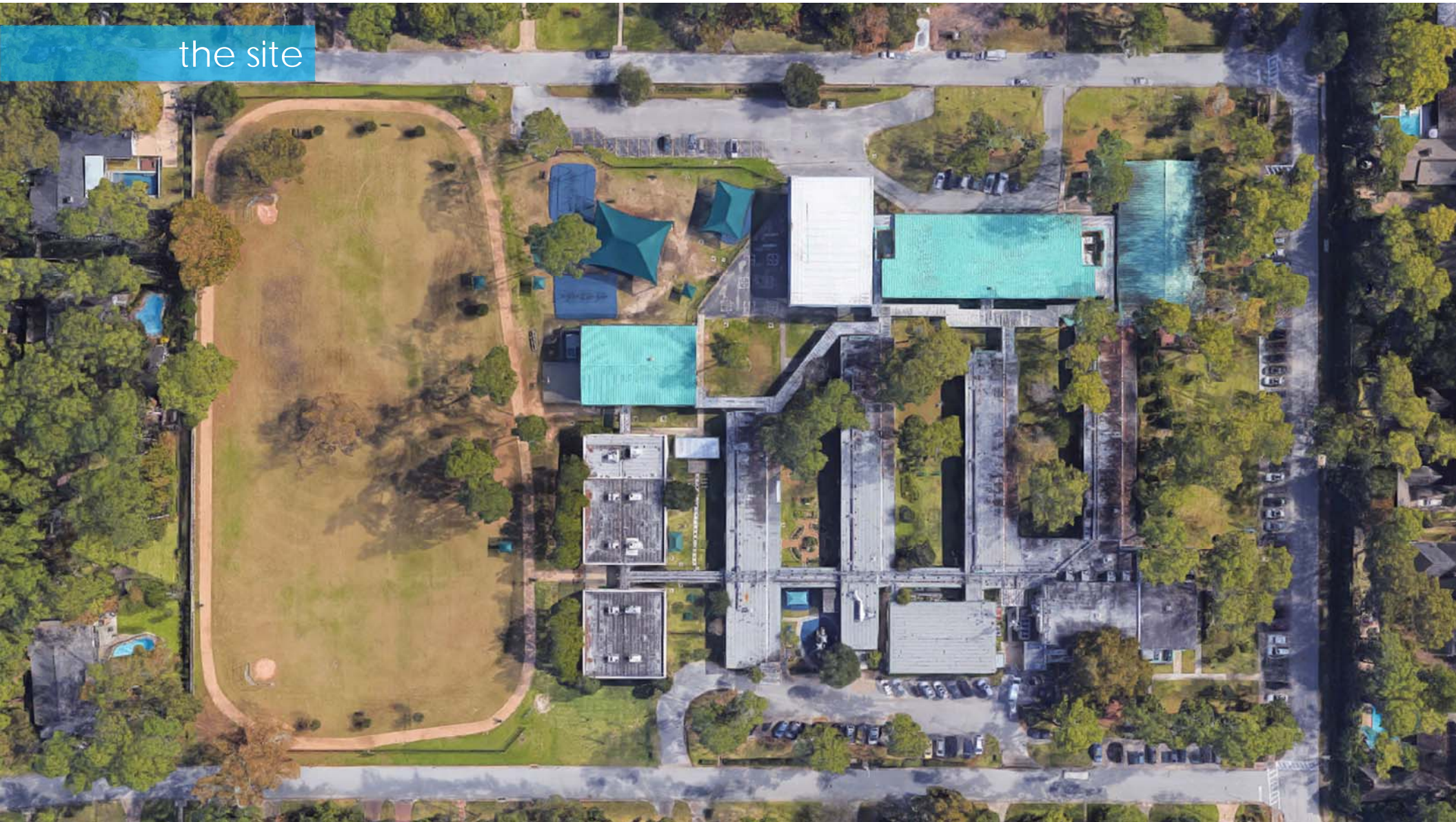
## Design Considerations

- SBISD Educational Specifications
- Site Parameters and Restrictions
- Staff Survey Feedback
- School Visioning Exercise
- Cube Exercise





the site





trees



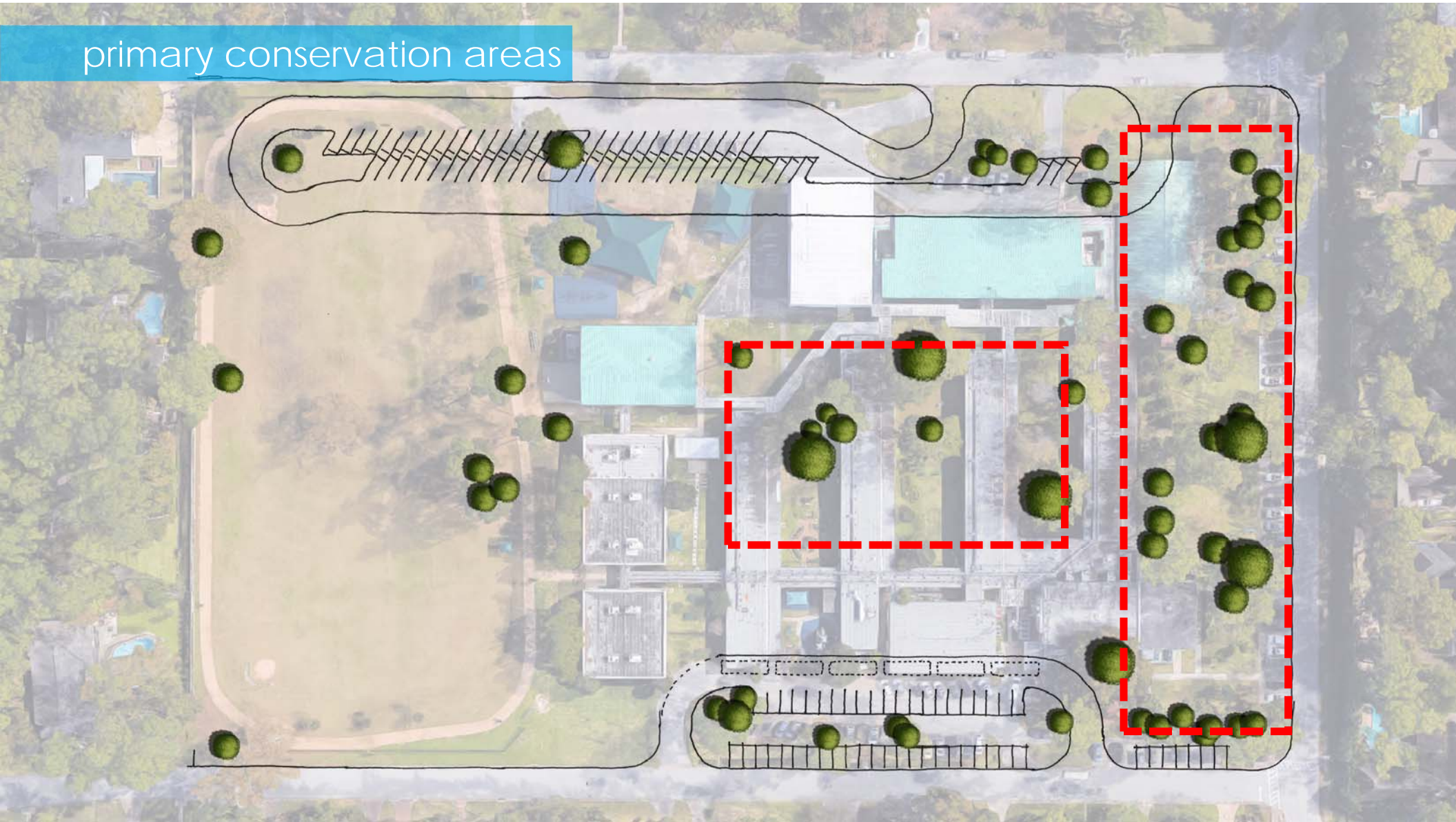


parking + queuing





primary conservation areas





# academics





school front





commons





# commons





# commons



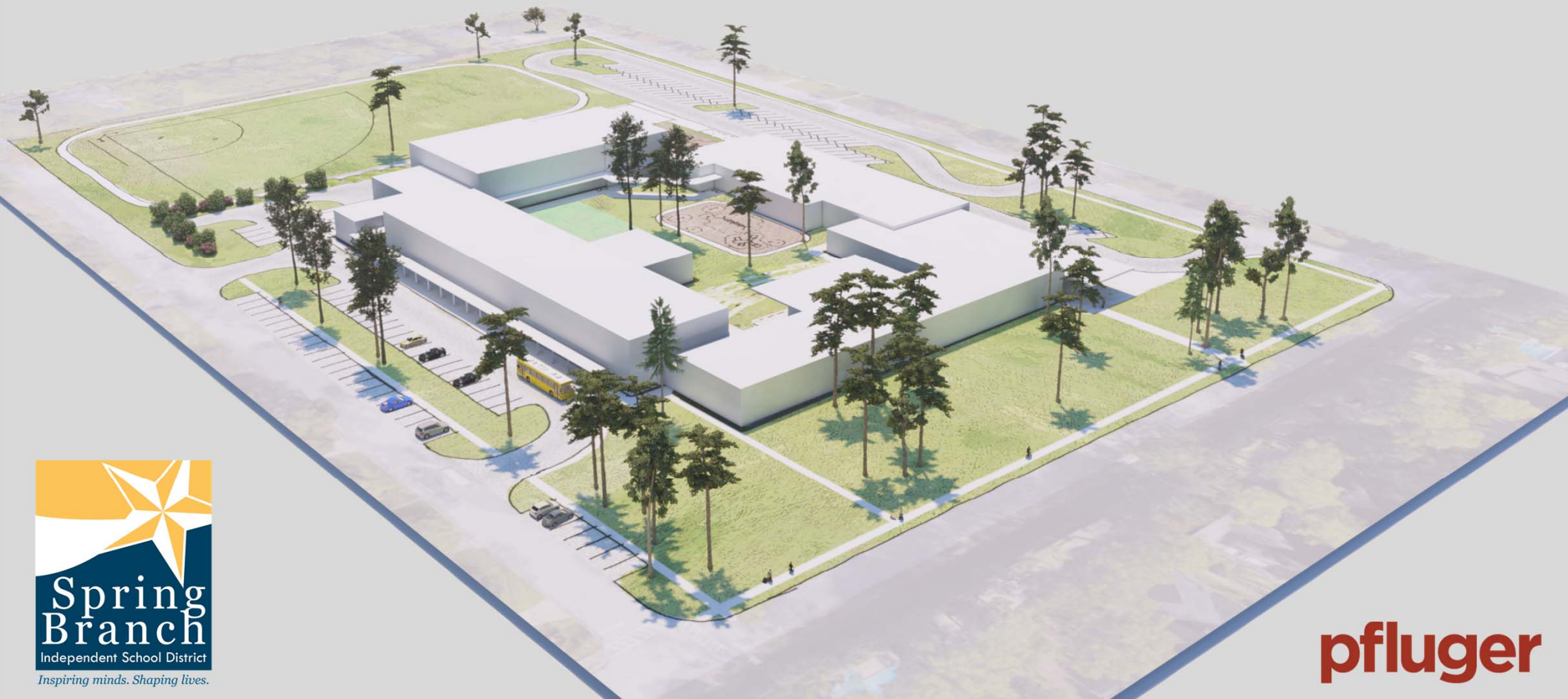


# proposed layout





proposed massing



# Hunters Creek Elementary School

## Next Steps

PAT Meeting Schedule: all meetings are at 3:15pm at HCE

■ <b>Meeting #4</b>	<b>February 20, 2019</b>	<b>Final Design Concept Presentation</b>
■ Meeting #5	March 20, 2019	Schematic Progress Update
■ Meeting #6	May 15, 2019	Design Development Update
■ Meeting #7	August 14, 2019	Construction Documents Update
■ Meeting #8	November 6, 2019	Final Review Presentation



## QUESTIONS?

**pfluger**