



ONTEORA CENTRAL SCHOOL DISTRICT

# 2019-20 Budget Presentation Capital Project Updates

January 8, 2019  
Woodstock School



## What Drives School Construction Costs?

### **Specialized Building Code** – Set by State Education Department (SED)

- Higher wind-loading requirements, fire-rated corridors, more stringent ventilation, fire alarm, and electrical systems, etc.
- Higher initial durability standards that save maintenance and replacement costs over the long run.

### **State Public Works Laws**

- Prevailing Wages – Regulated payroll and wages.
- Wicks Law – Must bid multiple prime contractors.

### **Supply and Demand**



# Funding Sources

## General Fund Budget

### Transfer to Capital

1. Capital Outlay Exception
  - \$100,000
  - Building aid received in following year
  
2. Additional Transfer to Capital Funds
  - Must include construction costs in order to be eligible for building aid
  - Building aid paid by NYSED to District over the course of 15 years



# Work To Be Done

## General Fund Budget

- Maximum \$750,000 currently in draft budget
- Field Hockey Field/Baseball Field Drainage
- HS Doors/Security Entrance
- Alternates to the Press Box/Bleacher Project



# Funding Sources Con't

## Repair Reserve

- \$1.6 Million currently in account
- Purpose: to pay for costs of repairs to existing capital improvements
- Un-allowed: to replace capital improvements instead of repairing items
- Requires a Public Hearing
- Requires approval of 2/3 of the Board of Education
- Not eligible for Building Aid



# Work To Be Done Con't

## Repair Reserve Potential Projects

- Repointing Bricks
- HS Roof
- Drainage under the Track and Football field
  - Modifications to field to allow for uses other than football
- Estimated cost up to \$1million



# Funding Sources Con't

## Capital Project Funding Options

1. Capital Reserve
    - \$6.1 million currently in Capital Reserve account
  2. Bonding
    - Debt from Bennett project payments ending in 2022-2023
    - Replacing current debt would keep Building Aid payments stable
    - Allows us to hold on to Reserve to use for Future Planning
- Both Require Voter Approval



# Work To Be Done Con't

## Capital Project Components

1. ADA Commitment Letter to State Education Department
  - HS/MS Bathrooms
  - Approx. \$1.1 Million
  - HS/MS Locker Rooms
  - Still to be determined
2. Replacing Bennett Roof (partial)
  - Approximately \$1.0 Million
  - Incorporating new requirements for a school building roof project

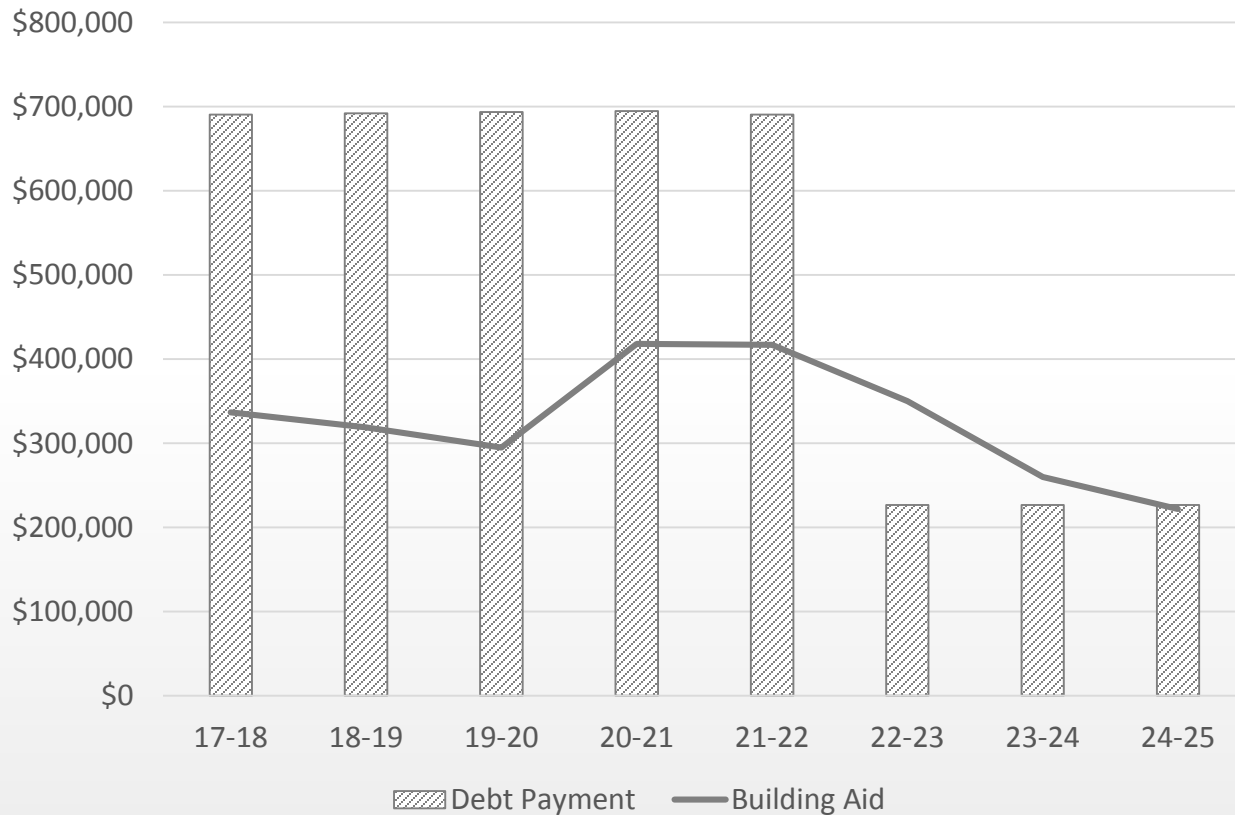




# ONTEORA CENTRAL SCHOOL DISTRICT

## Debt Pmts. vs. Bldg Aid

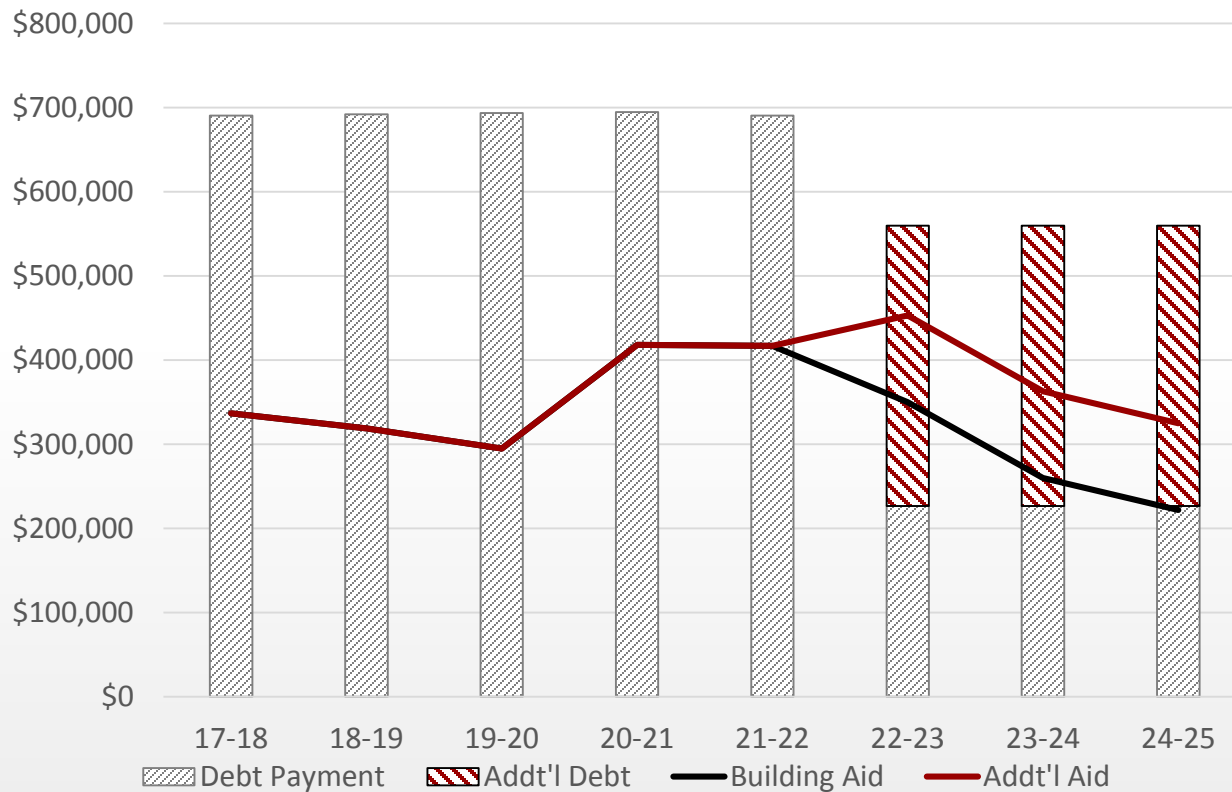
**Current**





# ONTEORA CENTRAL SCHOOL DISTRICT

## Potential Future Debt/Aid Impact





# ONTEORA CENTRAL SCHOOL DISTRICT

## Summary

### **Budget**

FH Field/Baseball Field  
Doors  
Lower Level Safety

### **Repair Reserve**

Repointing Bricks  
MS/HS Roof  
Drainage Lining Repair

### **ADA Capital Project**

Commitment Letter to SED  
MS/HS Locker rooms  
MS/HS Bathrooms  
Bennett Roof (partial)



# Capital Project

## Next Steps

- Discussions with Cabinet, Facilities Committee, Community and Architect
- Refine project scope
- Refine costs