



Program Report

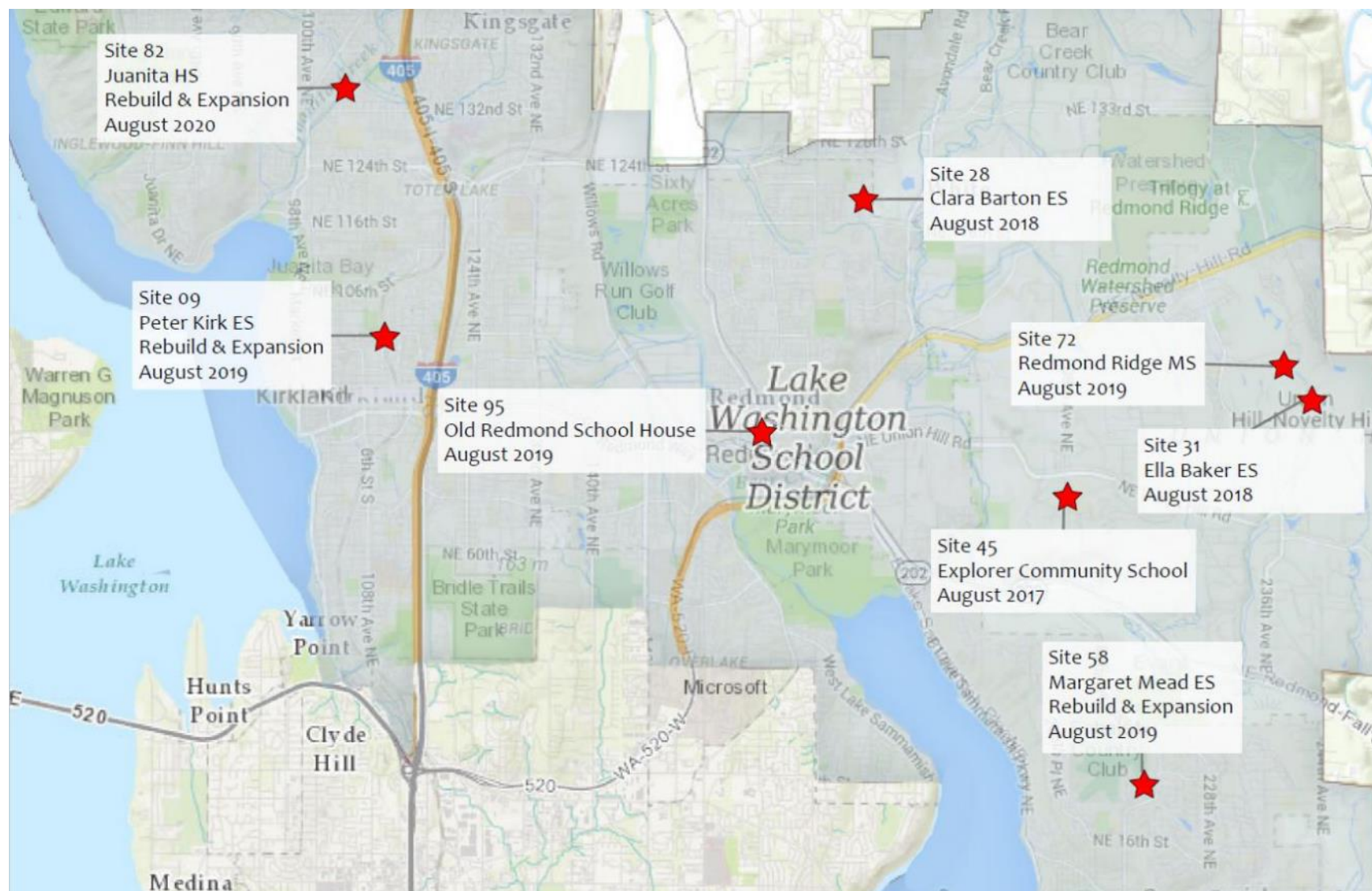
Facilities: 2016 Bond Projects Update



2

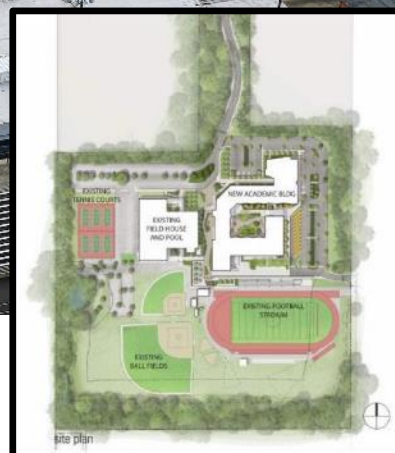
2016 Bond Project Update







Finished
Site Plan



Juanita High School

Location: 10601 NE 132nd Street, Kirkland

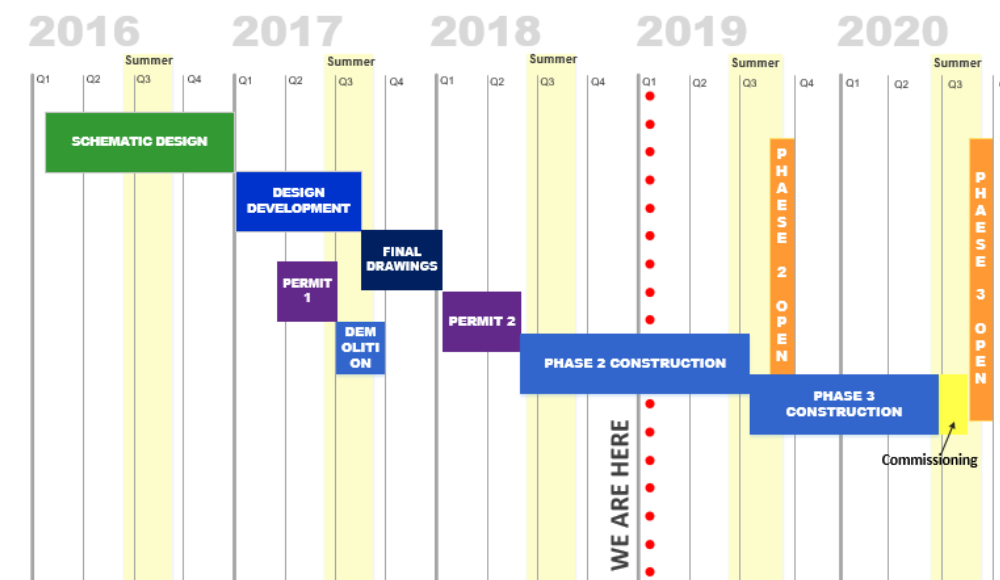
Square Footage: 219,364

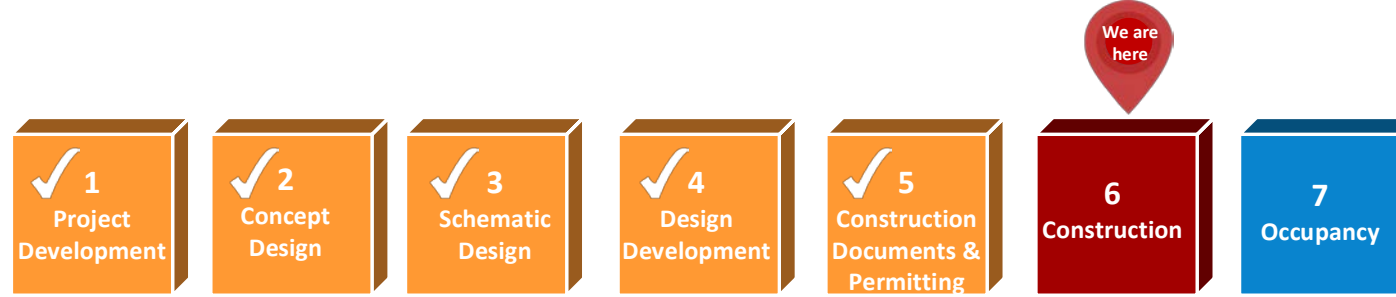
*Field House & Pool remain "as is"

Capacity: 1,800 students (increase of 504)

Spaces: 36 standard classrooms plus science labs, art, CTE, special education, instrumental & vocal music, library, theater, cafeteria

Planned Opening: September 2020 - one year early





□ Accomplishments

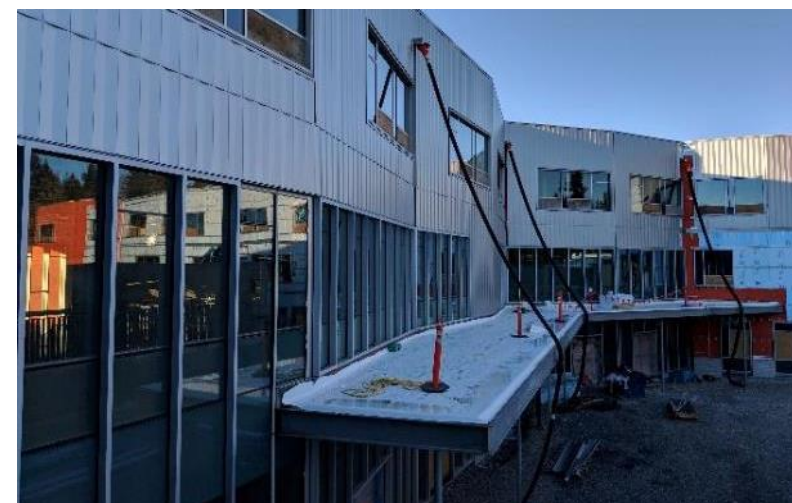
- Exterior building envelope complete – December 2018
- Casework installation began – December 2018
- Roof complete – January 2019
- Concrete burnishing and polishing began – January 2019

□ Upcoming

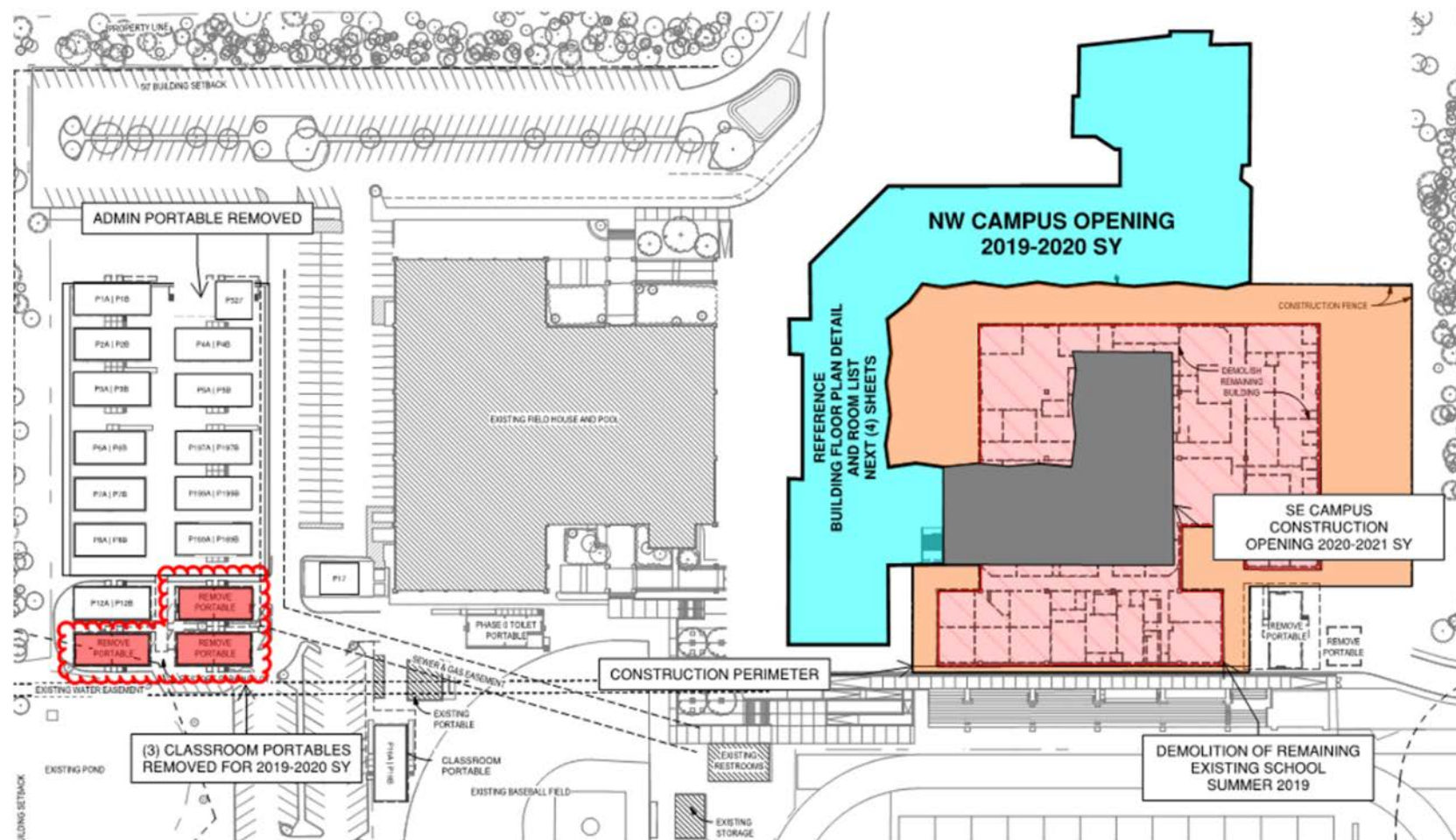
- Elevator installation complete – February 2019
- Geo-well drilling complete – February 2019
- Sheet rock installation complete – March 2019



Juanita High School



Juanita High School





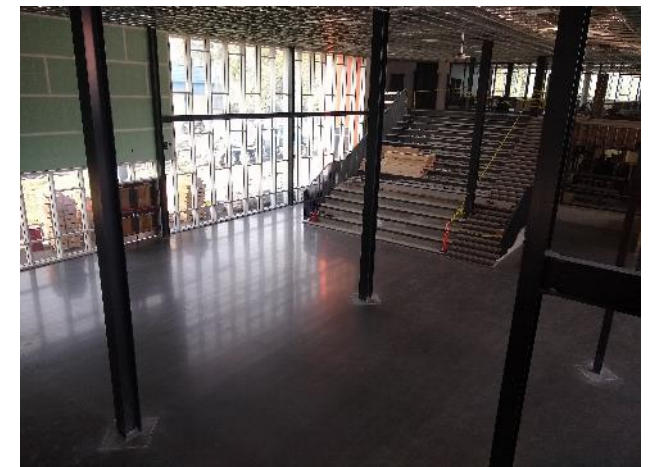
Juanita High School





Juanita High School

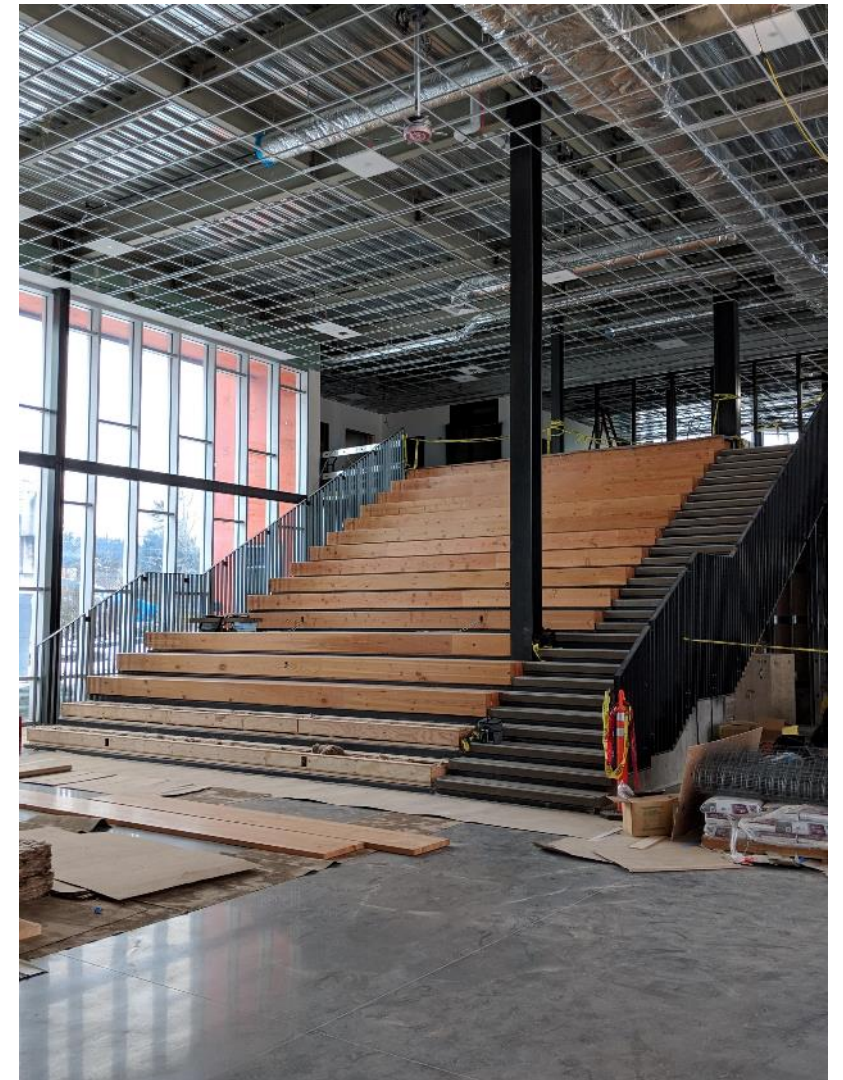
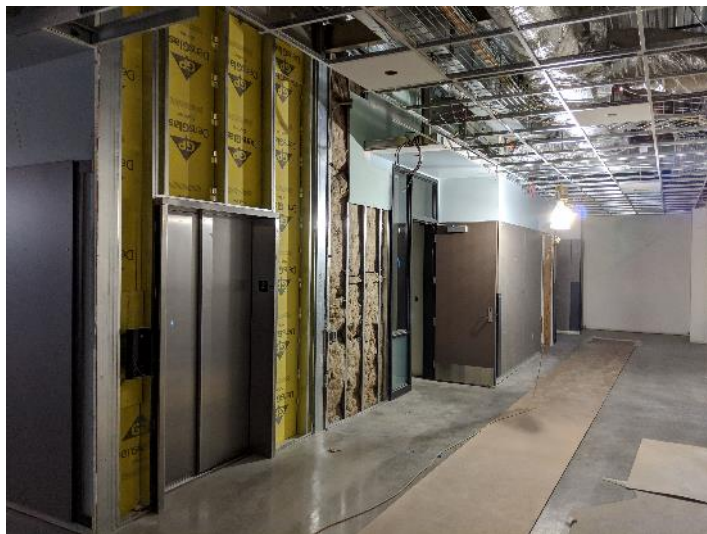
9





Juanita High School

10





Timberline Middle School

(New Middle School Redmond Ridge)



Finished
Site Plan

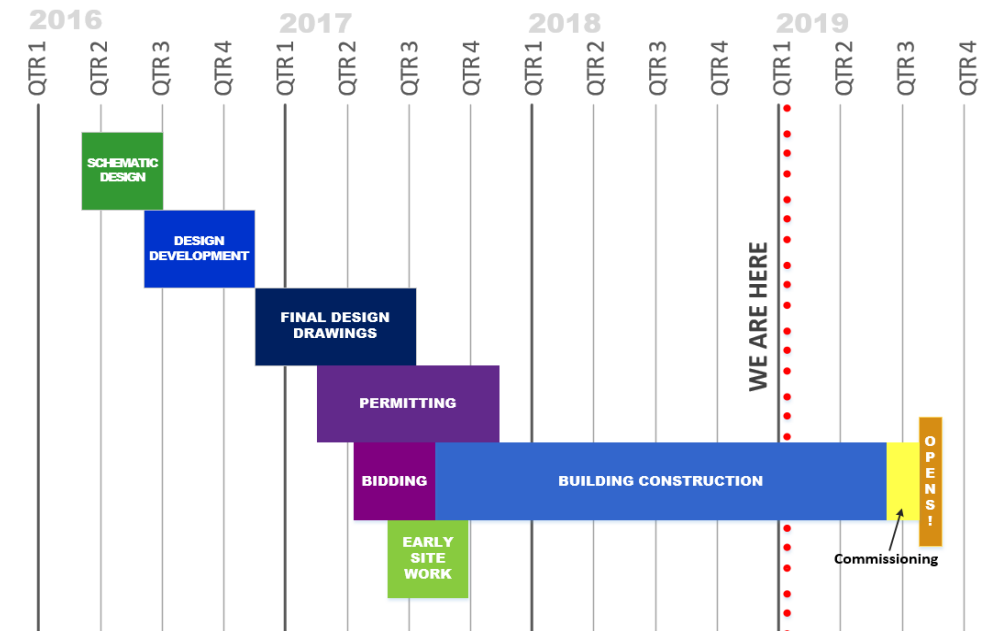
Location: 9900 Redmond Ridge Drive NE, Redmond

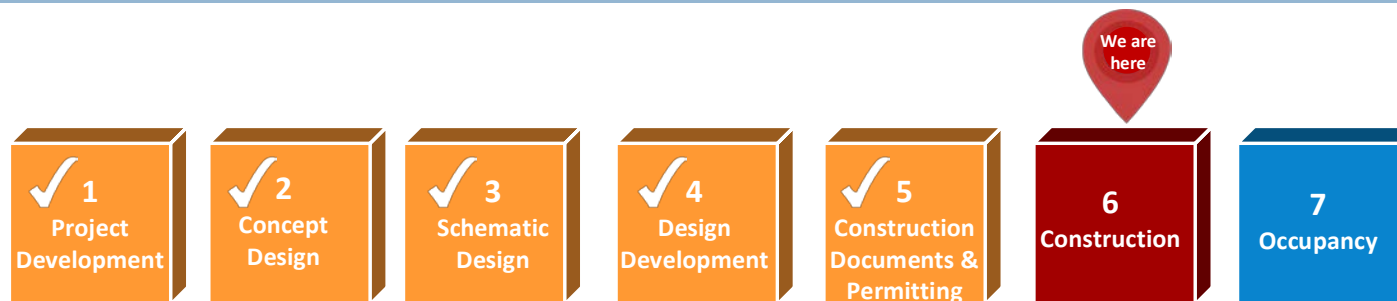
Square Footage: 134,762

Capacity: 900 students

Spaces: 24 standard classrooms plus instrumental and vocal music, special education, art, lab science, CTE, library, cafeteria/commons with stage, & gymnasium

Planned Opening: September 2019 - on schedule





□ Accomplishments

- ▣ Kitchen equipment installed – January 2019
- ▣ Gym wood floor complete – January 2019
- ▣ Lockers installed – January 2019

□ Upcoming

- ▣ Gym bleachers installation– February 2019
- ▣ Admin and library casework installation – April 2019
- ▣ Elevator operational – May 2019



Timberline Middle School

(New Middle School Redmond Ridge)

13

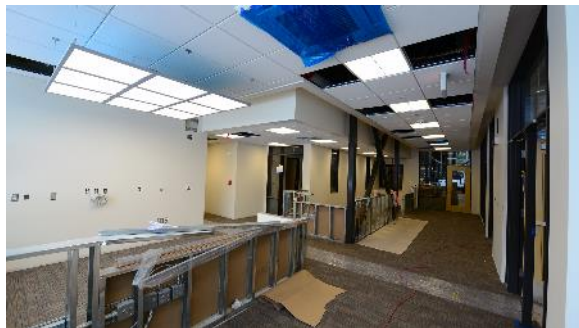
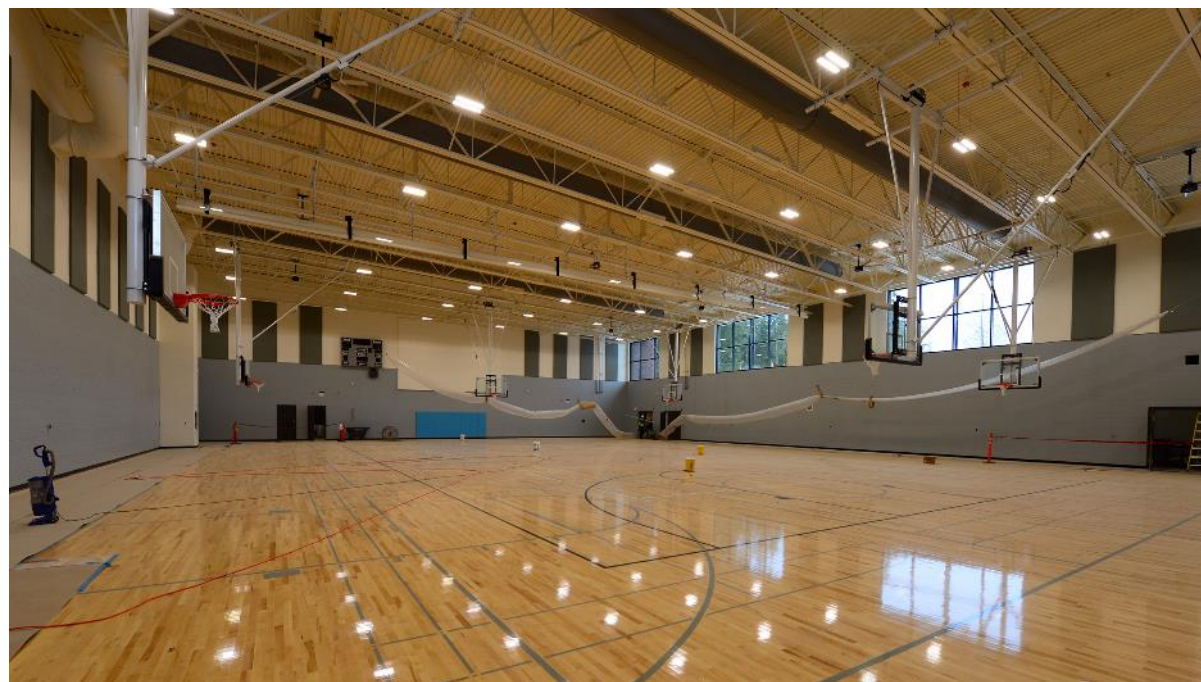




Timberline Middle School

(New Middle School Redmond Ridge)

14

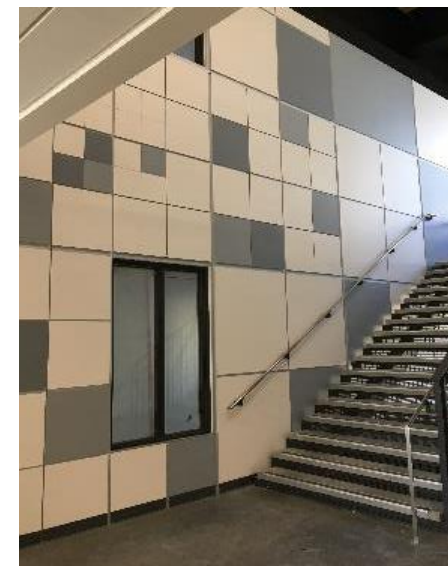
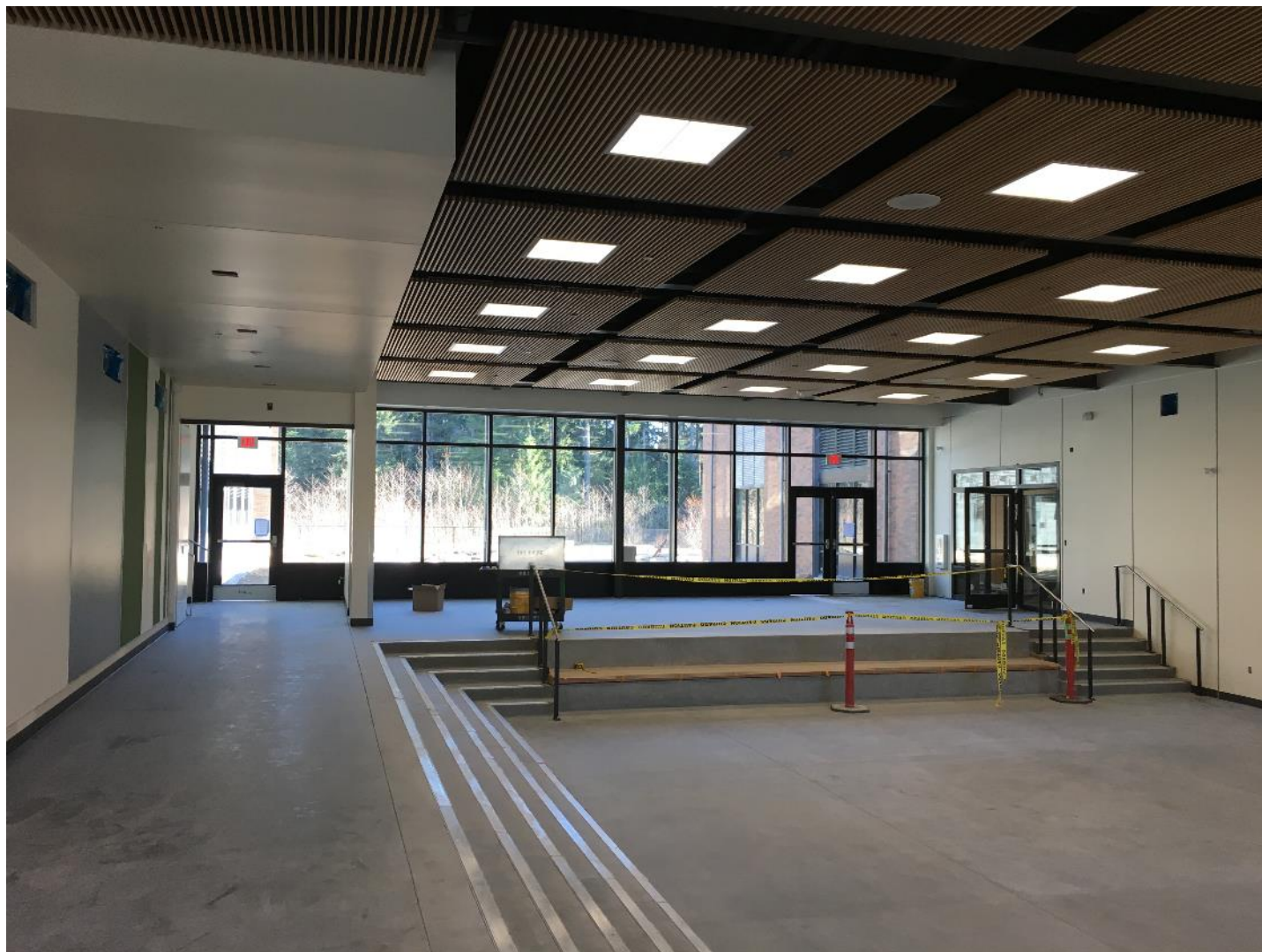




Timberline Middle School

(New Middle School Redmond Ridge)

15



Peter Kirk Elementary School

Rebuild & Enlarge



Finished
Site Plan



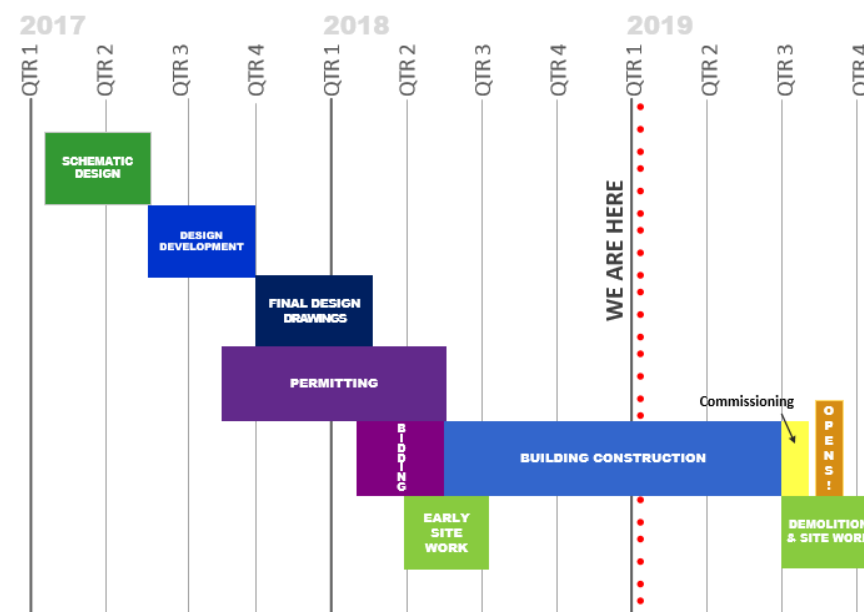
Location: 1312 - 6th Street, Kirkland

Square Footage: 78,236

Capacity: 690 (current student-teacher ratio)

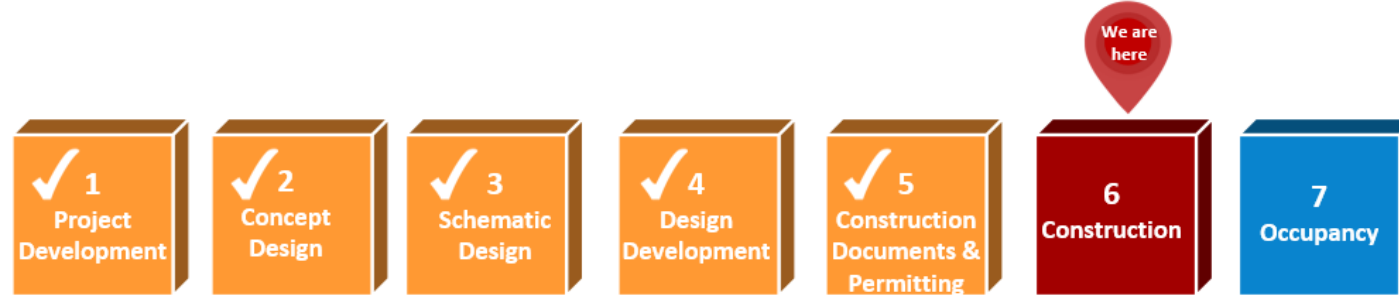
Spaces: 30 standard classrooms plus music, art/science rooms, ELL/SN/special education, library, cafeteria/commons, gymnasium, & outdoor covered play area

Planned Opening: September 2019 - on schedule



Peter Kirk Elementary School Rebuild & Enlarge

17



□ Accomplishments

- Structural steel installation completed – November 2018
- Exterior wall framing completed – January 2019
- Roof installation began – January 2019

□ Upcoming

- Building weatherproofing complete – February 2019
- Drywall installation begins – February 2019
- Exterior building envelope completed – March 2019



Peter Kirk Elementary School Rebuild & Enlarge



Margaret Mead Elementary School

Rebuild & Enlarge

19



Finished
Site Plan



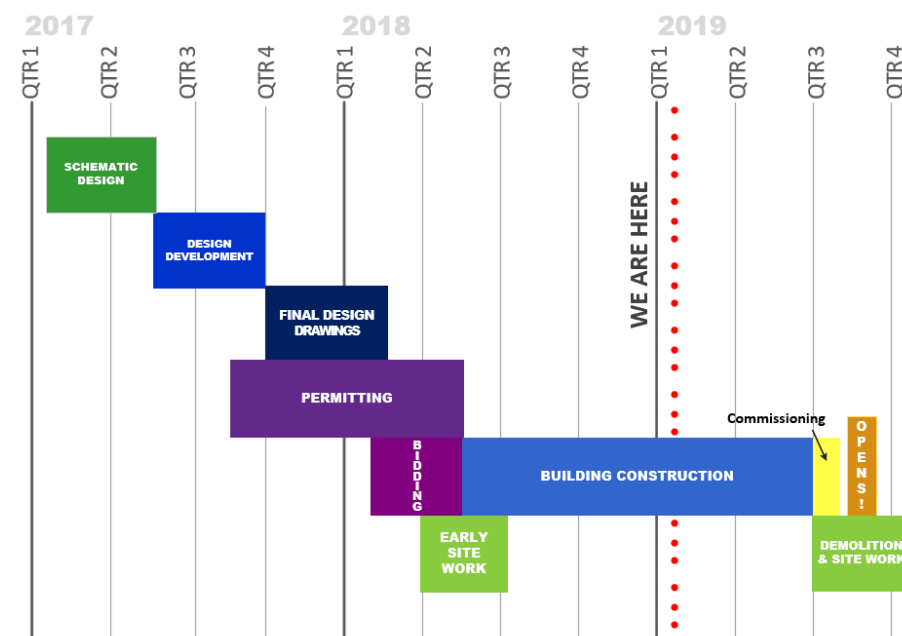
Location: 1725 - 216th Ave NE, Sammamish

Square Footage: 78,236

Capacity: 690 (current student-teacher ratio)

Spaces: 30 standard classrooms plus music, art/science rooms, ELL/SN/special education, library, cafeteria/commons, gymnasium, & outdoor covered play area

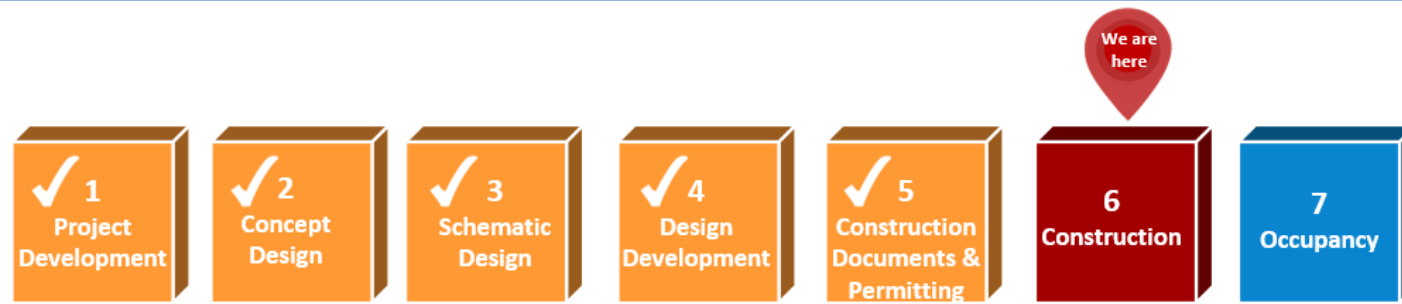
Planned Opening: September 2019 - on schedule





Margaret Mead Elementary School Rebuild & Enlarge

20



□ **Accomplishments**

- ▣ Structural steel installation completed – November 2018
- ▣ Exterior wall framing completed – January 2019
- ▣ Roof installation began – January 2019

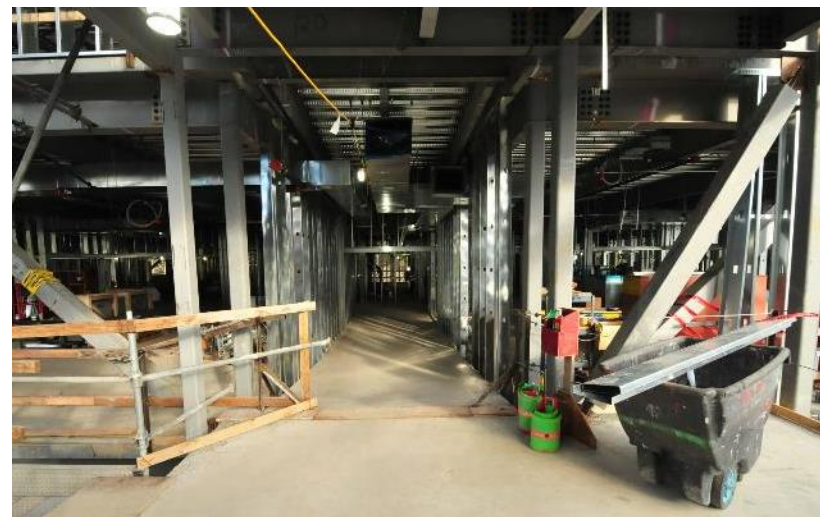
□ **Upcoming**

- ▣ Building weatherproofing complete – February 2019
- ▣ Drywall installation begins – February 2019
- ▣ Exterior building envelope completed – March 2019



Margaret Mead Elementary School Rebuild & Enlarge

21





Old Redmond School House



Site Plan

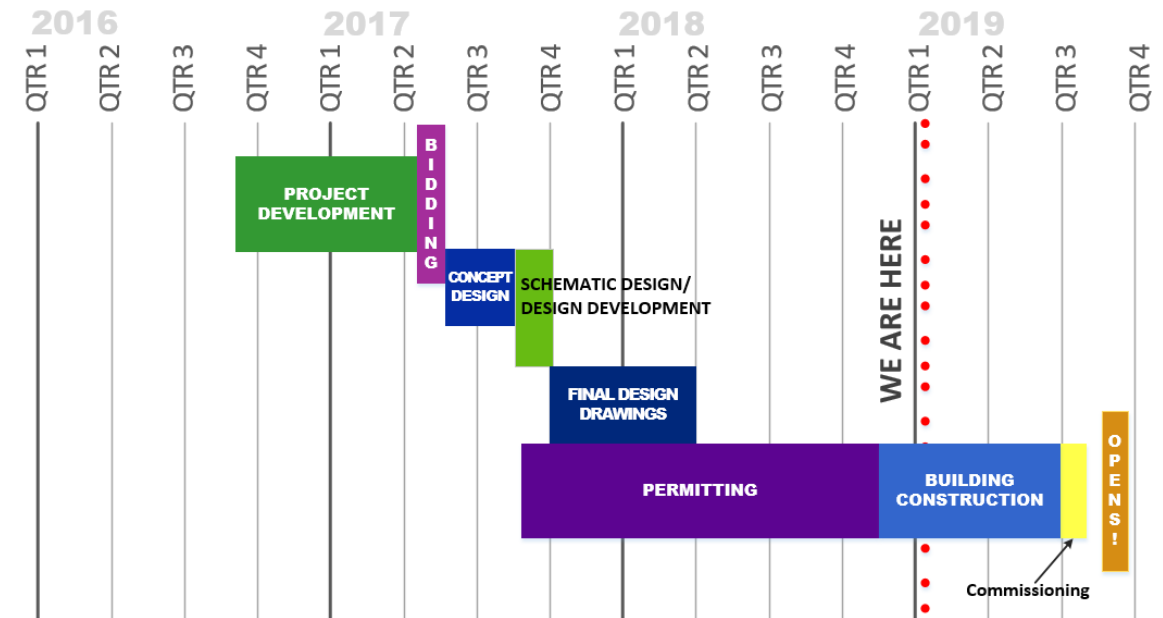


Location: 16600 NE 80th Street, Redmond

Square Footage: 40,000

Spaces: 10 preschool classrooms, gymnasium, cafeteria and commons

Planned Opening: September 2019 – on schedule





□ **Accomplishments**

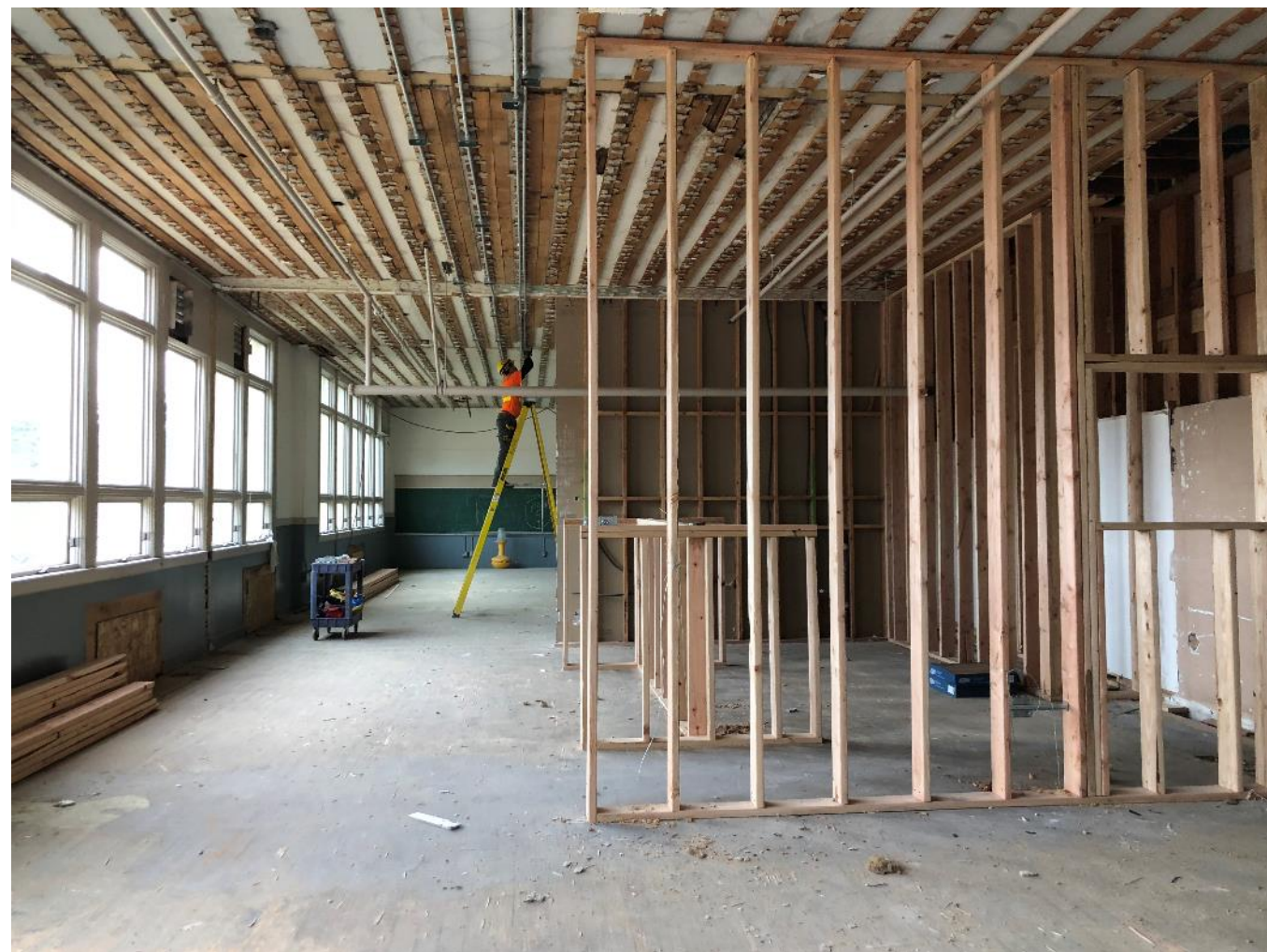
- Demolition complete – January 2019
- Wood framing began – January 2019

□ **Upcoming**

- Electrical and mechanical rough-in begins – February 2019
- Drywall and insulation installation begins – February 2019
- Painting and casework installation begins – March 2019



Old Redmond School House



25

Completed Projects

Clara Barton Elementary School

(New Elementary in North Redmond)



Finished
Site Plan

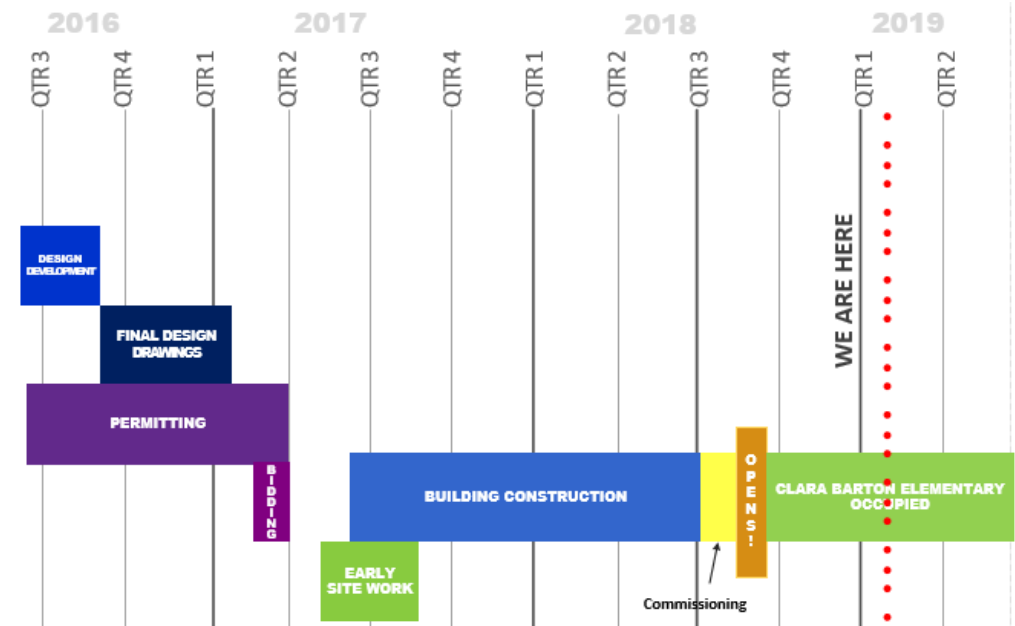
Location: 12101 - 172nd Avenue NE, Redmond

Square Footage: 78,236

Capacity: 690 students (current student-teacher ratio)

Spaces: 30 standard classrooms plus music, art/science rooms, ELL/SN/special education, library, cafeteria/commons, gymnasium, & outdoor covered play area

Planned Opening: September 2018 – Opened on schedule

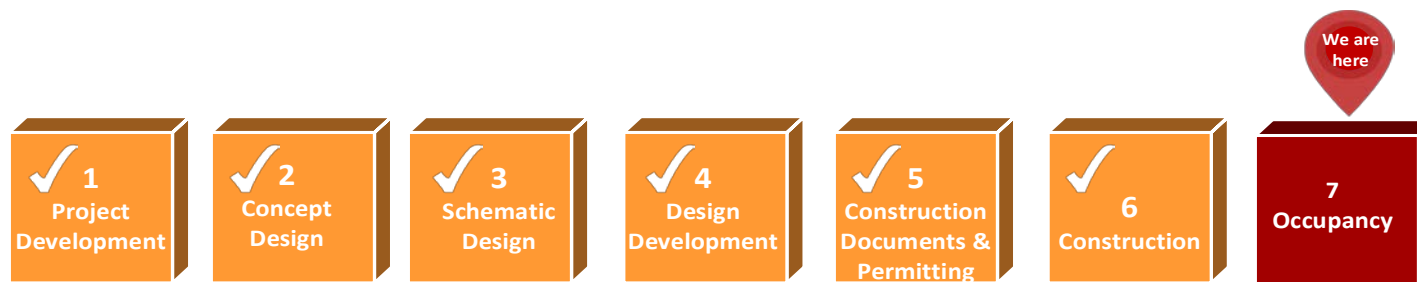




Clara Barton Elementary School

(New Elementary in North Redmond)

27



□ Accomplishments

- ▣ Commons projector installation – December 2018
- ▣ Building commissioning transition phase – February 2019

□ Upcoming

- ▣ Contractor warranty walk – June 2019



Clara Barton Elementary School

(New Elementary in North Redmond)

28



Ella Baker Elementary School

(New Elementary in Redmond Ridge East)



Finished
Site Plan



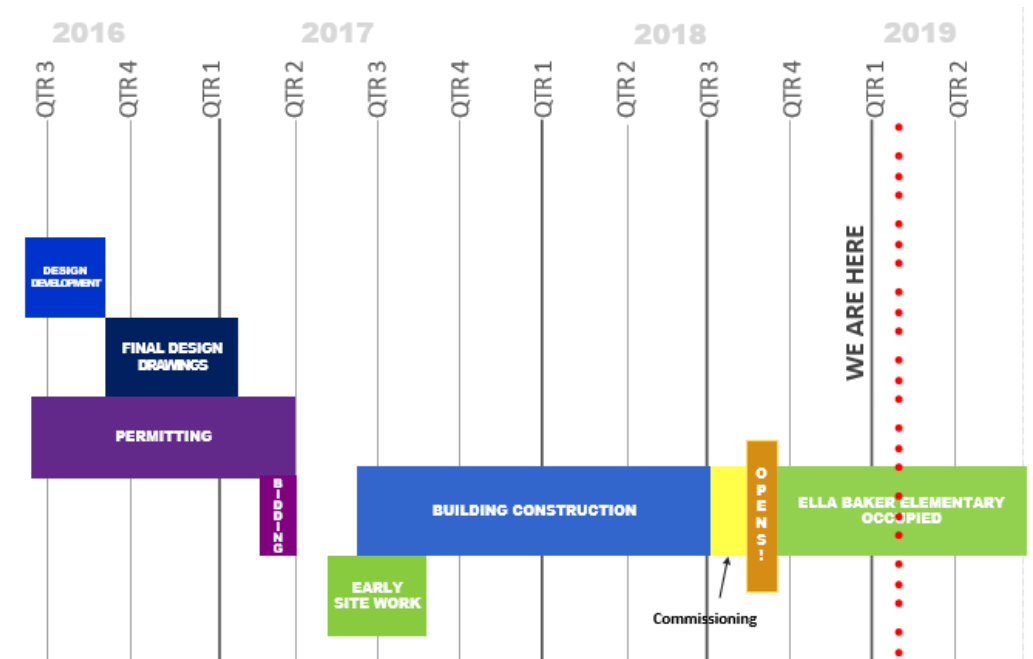
Location: 9595 Eastridge Drive NE, Redmond

Square Footage: 78,236

Capacity: 690 students (current student-teacher ratio)

Spaces: 30 standard classrooms plus music, art/science rooms, ELL/SN/special education, library, cafeteria/commons, gymnasium, & outdoor covered play area

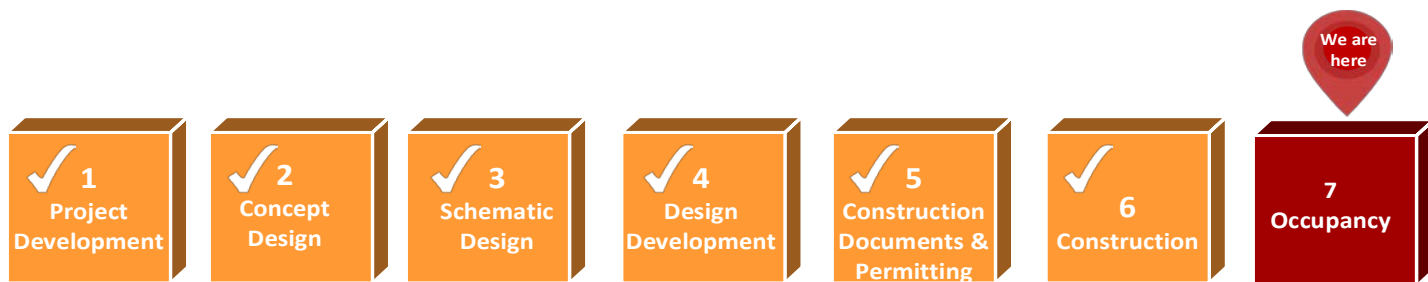
Planned Opening: September 2018 – Opened on schedule



Ella Baker Elementary School

(New Elementary in Redmond Ridge East)

30



□ Accomplishments

- Commons projector installation – December 2018

□ Upcoming

- Finalized traffic plan implemented – February 2019
- Sand playfield regrade – June 2019
- Contractor warranty walk – June 2019



Ella Baker Elementary School

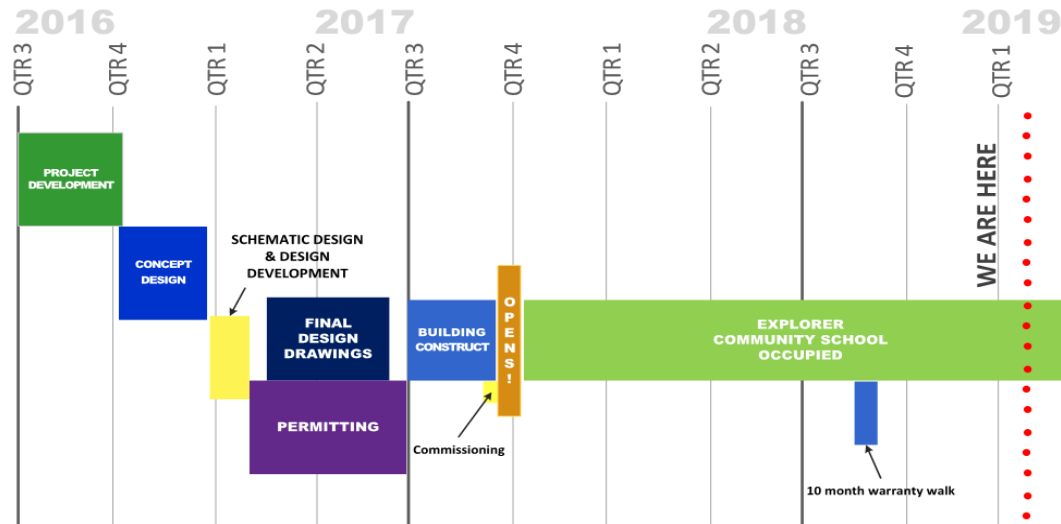
(New Elementary in Redmond Ridge East)

31



Explorer Community School

32



Location: 7040 - 208th Ave NE, Redmond

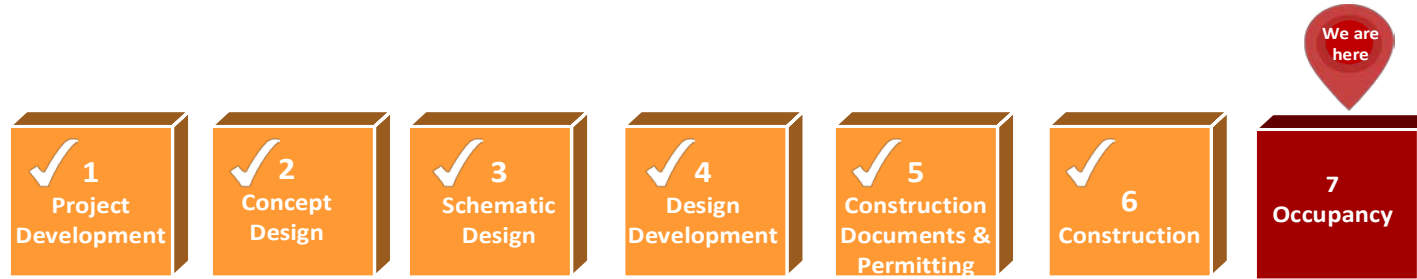
Square Footage: 3,000

Capacity: 75 students

Spaces: 4 modular buildings, including 3 standard classrooms, support space, restrooms and outdoor covered play area

Planned Opening: September 2017 –
Opened on schedule





□ Accomplishments

▣ Project Close – December 2018

34

Construction Program Update



Program Cost Update

35

- Bond Project Costs vs. estimates are monitored on a regular basis
- The Puget Sound marketplace is the 3rd most expensive construction market in the nation and 6th in the world
- LWSD and GC/CM partners actively value engineering cost savings to mitigate some of this escalation
- Intentional cost control measures and rigorous oversight have offset increasing costs from current market
- The LWSD Building on Success program as a whole is 100% bid out, so project costs are locked-in and risk from the market volatility is low.



Program Cost Update

36

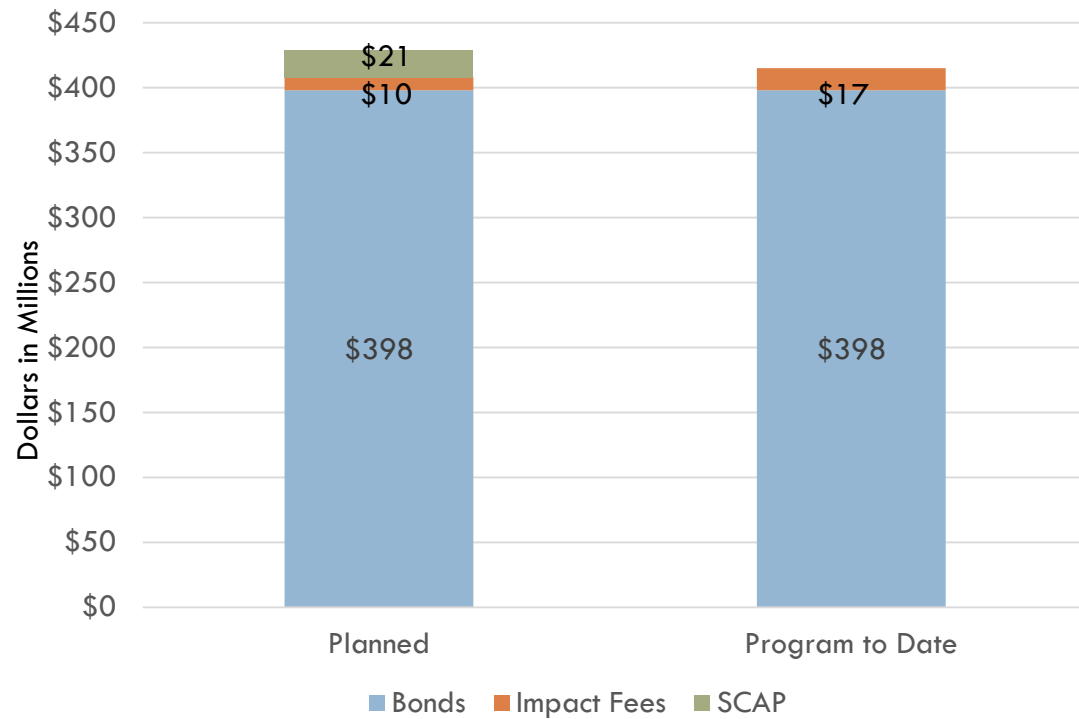
- April 2016 voter approved bonds of \$398 million have all been sold
 - ▣ \$165 Million – sold August 2016
 - ▣ \$165 Million – sold November 2017
 - ▣ \$68 Million – sold November 2018
- Districts bonds receive the highest credit rating assigned to any school district in the state which helps keep interest rates low
 - ▣ S&P Global AA+
 - ▣ Moody's Aaa



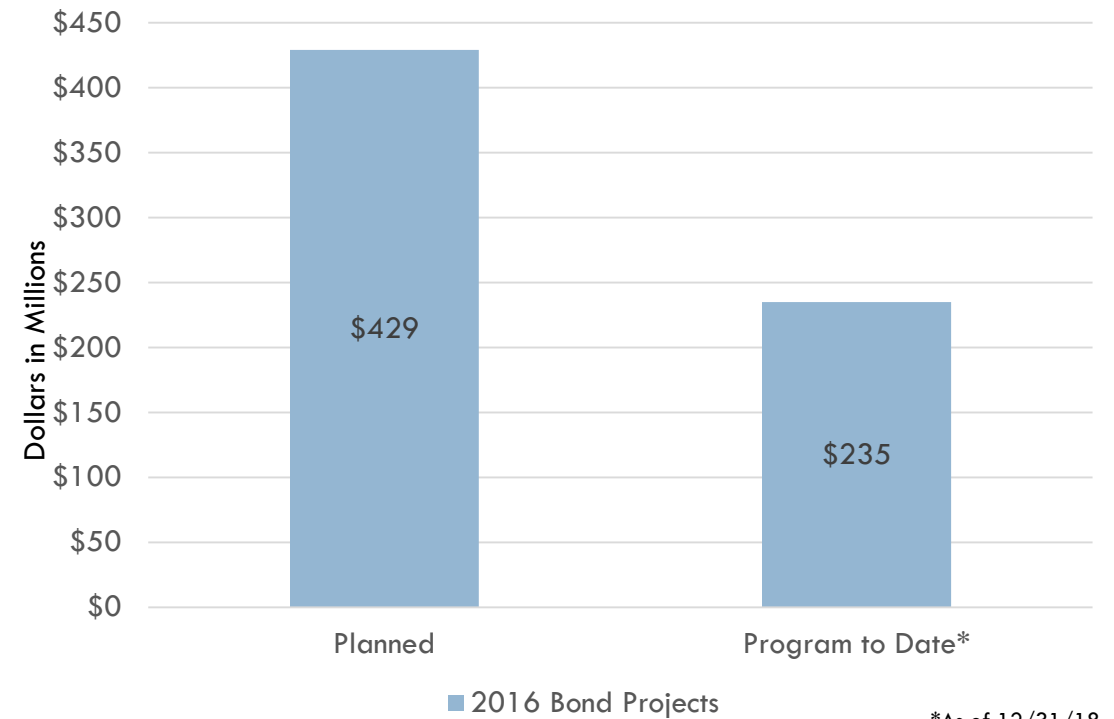
Program Cost Update

37

Program Revenues



Program Expenditures



*As of 12/31/18



Program Cost Update

38

- State Construction Assistance Funds (SCAP) planned at \$21 million
 - ▣ Program funding depends on receipt of State Construction Assistance Funds for Kirk, Mead and JHS projects
 - Approval from OSPI received July 2018
 - Funds are received at end of projects which could create a cash flow challenge
- Bond Program included \$19.9 million of program contingency
 - ▣ These funds are being used to offset jurisdictional requirements, market conditions and unforeseen project impacts



Program Cost Update

39

- ❑ Weather Impacts
 - ❑ Snowstorms in the last two weeks made it difficult for construction crews to get to sites and materials deliveries were delayed
 - ❑ Impacts to exterior site work
 - ❑ District will work with GC/CM partners to ensure projects stay on schedule





Communication

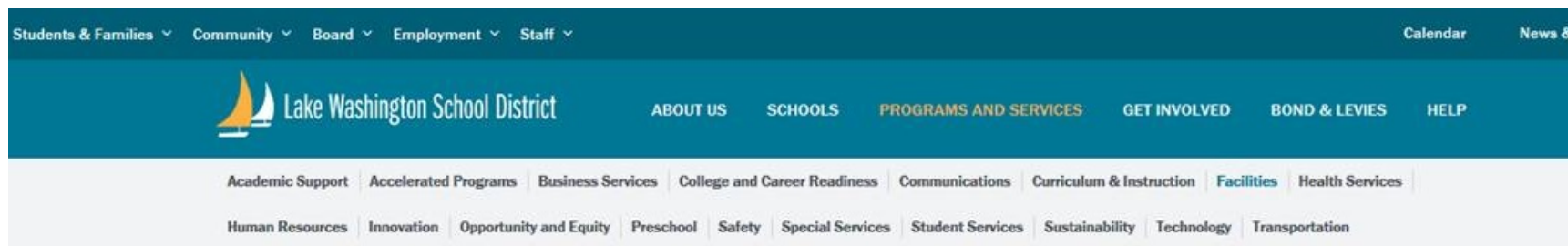
40

- Monthly Bond e-news updates
- Continued photography and video stories on projects posted on website, social media, etc.
- 18 Facebook Live broadcasts showing milestones of construction have received over 53,000 views
- Annual Bond progress information mailer sent to all district households in November 2018



More information

41



[HOME](#) > [PROGRAMS AND SERVICES](#) > [FACILITIES](#) > [CURRENT CONSTRUCTION PROJECTS](#) > [BUILDING ON SUCCESS](#)

Building on Success

Community support provides the resources for quality learning environments, experiences

Lake Washington School District (LWSD) is a high performing and successful public school district by many measures. The district's growing enrollment is evidence that LWSD attracts families to the area it serves in Kirkland, Redmond and Sammamish, Washington. To serve that growing enrollment, the district is "Building on Success." That's the district's long-term plan to continue to build schools and to provide quality learning environments and experiences.

A community-based Long-Term Facilities Planning Task Force developed a set of [recommendations](#) to reduce overcrowding and accommodate growing enrollment. They were adopted by the district's Board of Directors in December 2015. One recommendation included a [Design and Construction Advisory Committee](#). This committee of industry experts are reviewing each project to ensure alignment with district design standards and its goal of effective and efficient design, construction and operation.



HAVE QUESTIONS? LET'S TALK!
[CLICK HERE TO ASK QUESTIONS](#)

**Building on Success
Progress Report**

www.lwsd.org/buildingonsuccess