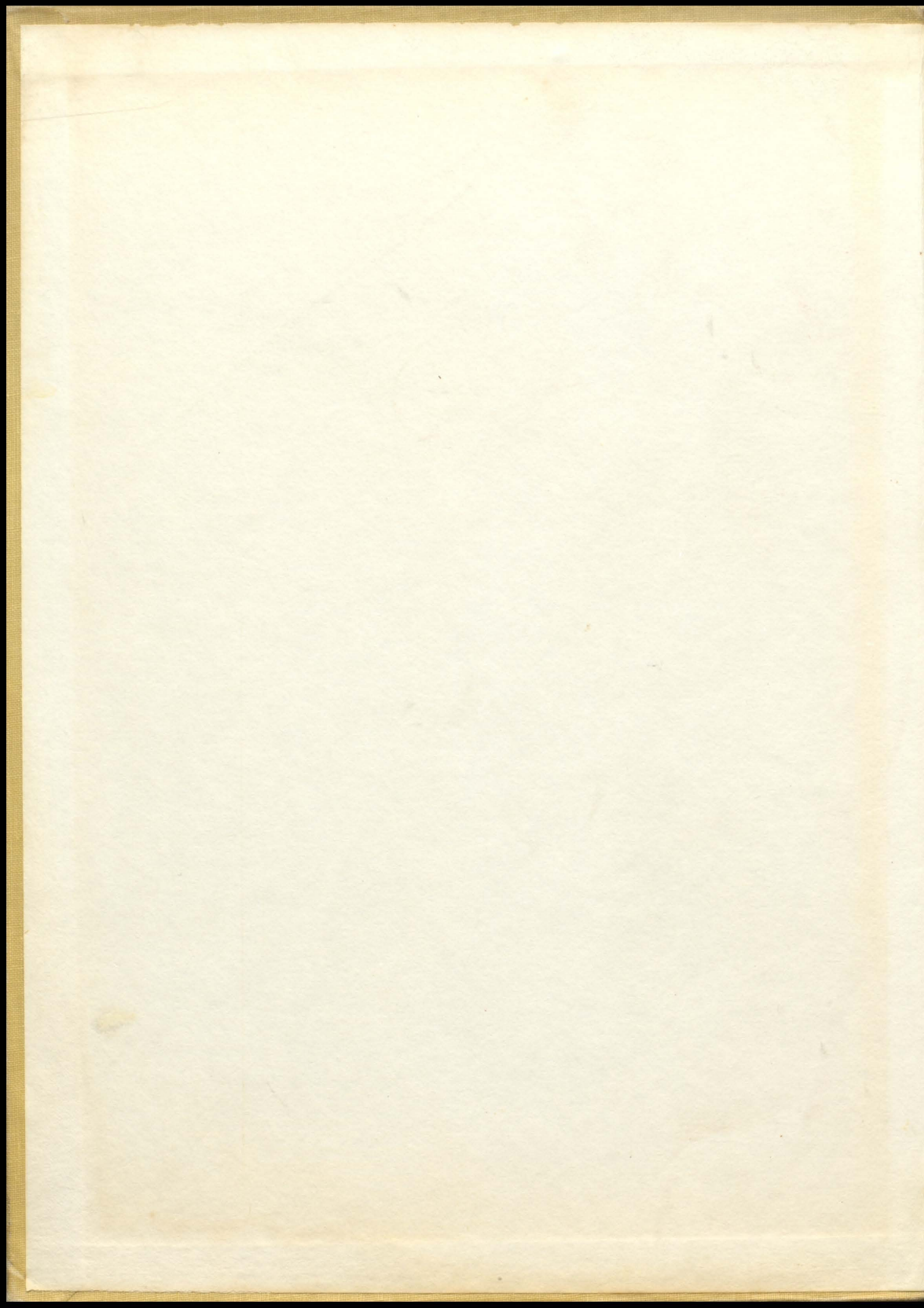
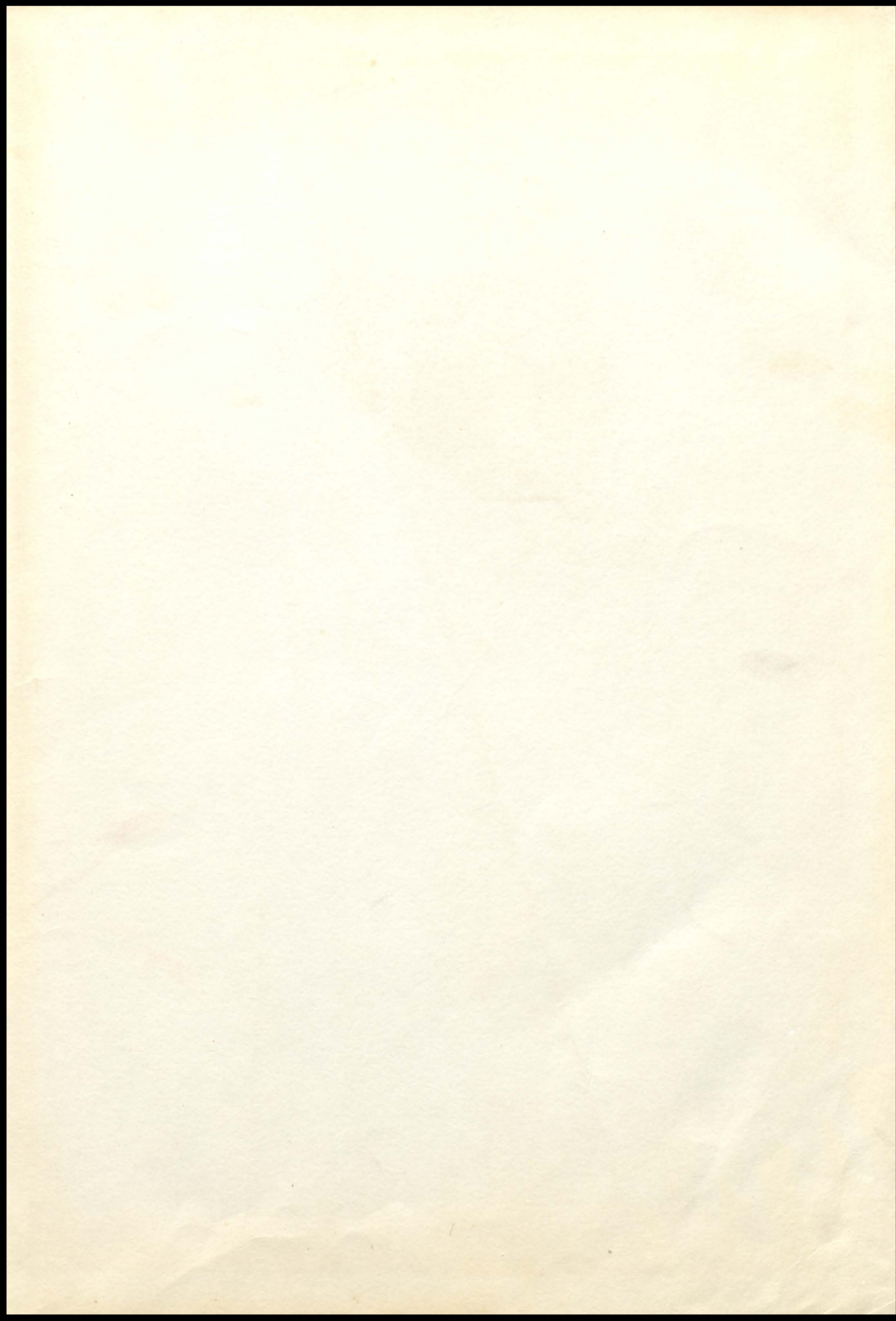
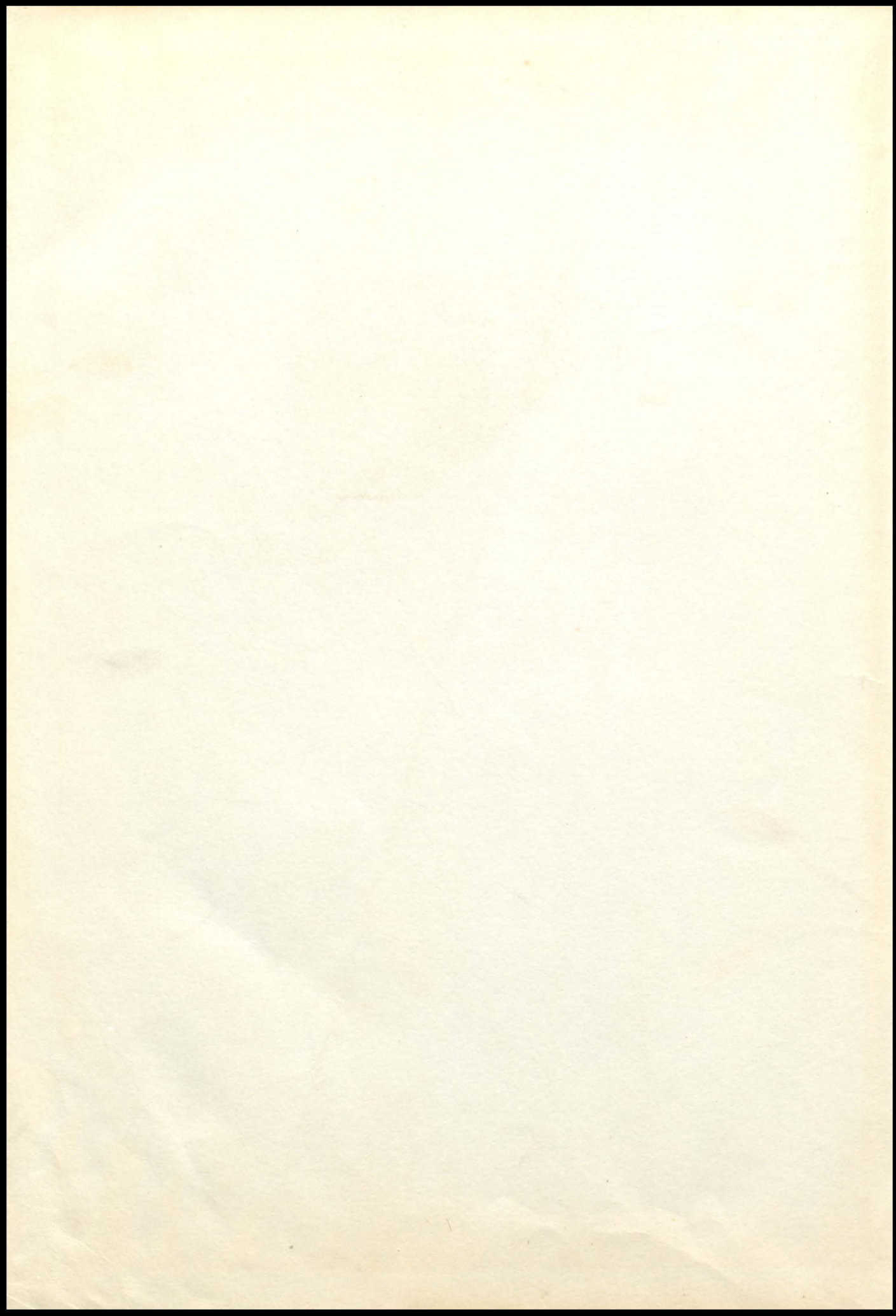


1958  
BURR OAK







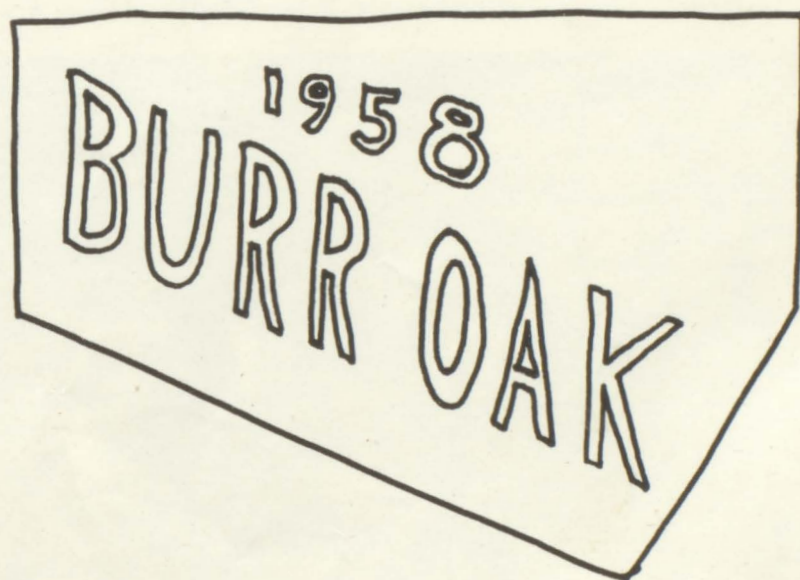




CHATFIELD HIGH SCHOOL

CHATFIELD—MINNESOTA

Presents





# Dedication

We, the senior class of 1958, wish to express our humblest appreciation to the people who have helped us the most -- OUR PARENTS.

They, who have provided for our material needs, have also shown us excellent examples, morally and spiritually. They have encouraged us when we needed encouragement and disciplined us when we needed discipline. In short, all we are we owe you, MOM and DAD.





# School Administration



G. R. HALVORSON  
St. Cloud State College and U.  
of Minn. Superintendent of  
Schools.



DALE HAUGEN  
Luther College and Iowa State,  
Senior High Principal.



MARIAN MORRISROE  
Winona State College, Elemen-  
tary Principal.



GERALD BERNATZ  
Luther College, Junior High  
Principal, Orientation, Basket-  
ball.

## School Board

STANDING: G. R. Halvorson, Superintendent, Dr. H. M. Skaug, Arthur Hoffman, H. P. Thurber, Treasurer, E.S. Gordon, President, R.A. Stokes. SEATED: M. C. Schroeder, Clerk.



# School Faculty



BURT ANDERSON  
Social Studies  
Mathematics  
Mankato State College



JOAN BARTON  
Mathematics  
College of St. Teresa



ALYCE BERNATZ  
Phy. Ed.  
English  
Luther College



LILLIAN HEALY  
Social Studies  
U. of Minn.

ROBERT HURLEY  
Science  
Winona State College

JANET KELLY  
English  
College of St. Teresa

ANN LAKE  
Home Economics  
St. Olaf and U. of Minn.

CAROL MARTIN  
English  
Art  
Winona State College



MARY MORTEN-  
SON  
Vocal Music  
St. Olaf and Luther  
College



RUBY OKERSTROM  
Spanish  
Library  
U. of Minn.



ESTELLA PEIPER  
English  
Speech  
St. Olaf



ROBERT SAVRE  
Mathematics  
Baseball  
Luther College



MARVIN SEIM  
Science  
St. Olaf



JOHN SKOOG LUN  
Social Studies  
St. Cloud State College



WAYNE STEPHENS  
Industrial Arts  
Moorhead State College



MAXINE SWIGGUM  
Commercial  
Luther College





# School Faculty



JOHANNES TALL  
Instrumental Music  
U. of Minn.



ROBERT TOPPIN  
Social Studies  
Speech  
Mankato State Col-  
lege



WILLIAM ZIEBELL  
Commercial  
Phy. Ed.  
Wrestling  
Football Track  
Winona State Col-  
lege



ELSIE MAE ANDER-  
SON  
Second Grade  
Luther College

JESSIE BLABAUM  
Fourth Grade  
Winona State Col-  
lege

BEVERLY BRYAN  
Third Grade  
Winona State Col-  
lege

ALTA HEYDON  
Fifth Grade  
Winona State College

ARDYS HURLEY  
Sixth Grade  
Winona State Col-  
lege



CECILE KAMNETZ  
Third Grade  
Winona State Col-  
lege



HELEN MARTIN  
First Grade  
Winona State Col-  
lege



AUDREY  
McCREADY  
Second Grade  
Mankato State Col-  
lege



DORTHY McCON-  
NELL  
Sixth Grade  
Winona State Col-  
lege



GLEND A SENJEM  
Fourth Grade  
Luther College



MARIAN TURNER  
Fifth Grade  
Winona State Col-  
lege



MARGUERITE  
WESTPHAL  
First Grade  
Winona State Col-  
lege



AVIS ANDERSON  
Rural School  
Preston Normal  
Training



# School Faculty



BETTY BJORTOMT  
Winona State  
College  
Rural School



HELEN BORGEN  
Winona State  
College  
Rural School



SERENA JESKE  
Preston Normal  
Training  
Rural School



MARGARET  
MANAHAN  
Rochester Normal  
Training  
Rural School

WINIFRED  
MULVIHILL  
Winona State  
College  
Rural School

FRANCES  
RICHARDS  
Preston Normal  
Training  
Rural School

MARJORIE SCOTT  
Winona State  
College  
Rural School

ALICE SIMPSON  
Secretary



BERNICE MILAND  
Assistant Secretary



LEILA McRAE  
Cook



BILL HERVEY  
Engineer



WENDELL  
ANDERSEN  
Assistant Engineer



WARREN MEAD  
Custodian



ROBERT COE  
Custodian



ALTA SMALLEY  
Cook

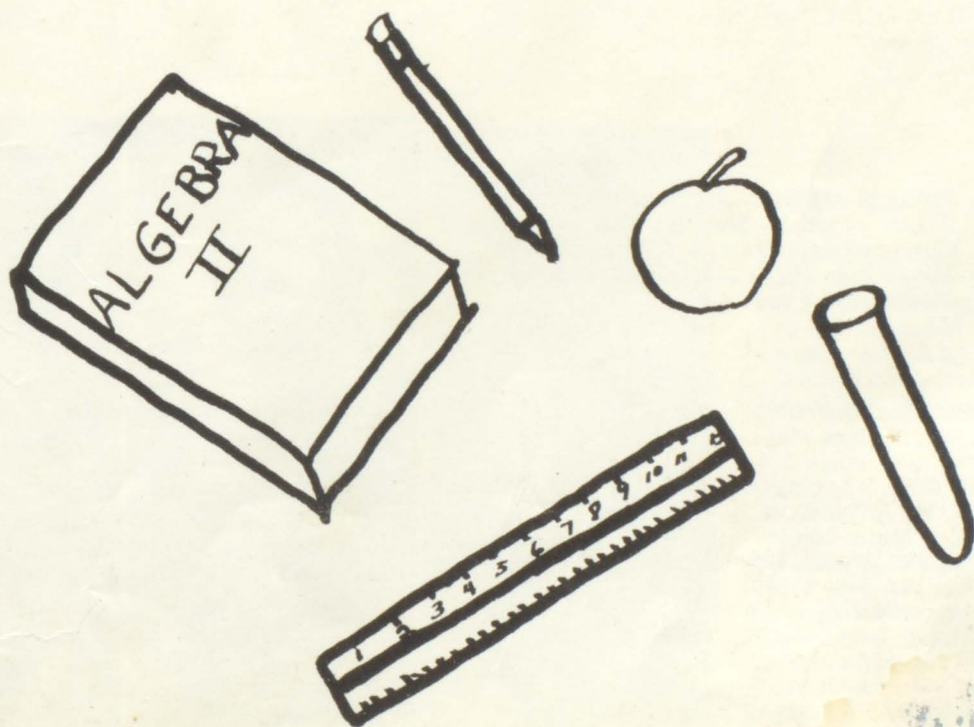


Mrs. ROBERT ROSE  
Custodian





# CLASSES





## Class Officers

President  
LUCILLE BARNES

Vice-President  
HAROLD BECKER

Secretary  
ELSIE TOLLEFSON

Treasurer  
JOHN BERGMAN

Adviser  
Mrs. PIEPER

## Class Motto

Our guide: WISDOM

Our goal: SUCCESS

## Class Colors

Wine and silver

## Class Flower

Baby Rose

## Seniors

PHYLLIS ALLEN -- Art Club 3; SHARON ALLEN -- Library Staff 3,4; Magazine Sales Chairman 4; Declam. 2; Trio 4; Chorus: Mixed 2-4; Girls's 2-4; Solo 4; Soprano Madrigal 2; B Band 1,2;

JOHN AMUNDSON -- Film Staff 3,4; Class Officer 2; Prom Comm. Chr. 3; Class Play 3; Football 1-4; Basketball 1-4; Track 2-4; Baseball 1-4; Letterman's Club 1-4; Chorus: Mixed 2,3; Boys' 2; KARLEEN ANDERSON -- Her Hi-Life Staff 1,2; Music Editor Student Senate 4; Tumbling Team 4; 3; Declam 1-4; GAA 1-4; Trio e Trio 4; Accompanist 2-4; e' 2-4; Girls' 2-4; Band 1-4; loist 1-4; Ensemble 2-4; Clu' 1-4; Swing Band 1-4; D. ASHER -- Film cer 2; Assistant Annar 3,4; Football Track 1,2,4; Baseball 2-4; Boys' Chorus 2





CAROL ASLESON--Gopher Hi-Life: Staff 2, Junior Editor 3, Editor 4; Junior High Editor 1; Library Staff 3; Student Senate 3; Office Staff 4; Class Officer 2,3; Prom Comm. Chr. 3; Class Play 3; Declam. 1-4; Nat'l Honor Society 3,4; Chorus: Mixed 2-4; Girls' 2-4; Band 1-4; Ensemble 2-4; FTA 3,4; Swing Band 2-4. BEVERLY AYER--Declam. 3,4; Majorette 3,4; GAA 1-4; Chorus: Mixed 2-4; Girls' 2-4; Madrigal 3; Triple Trio 4; B Band 1,2. MYRNA BAKER--Burr Oak Copy Ed. 4; Prom Comm. Chr. 3; GAA 2; Girls' Chorus 2,3.



LUCILLE BARNES--Student Senate 1,3; Office Staff 4; Class Officer 4; Prom Comm. Chr. 3; Tumbling Team 4; Declam. 1,3; GAA 1-4; Chorus: Mixed 2-4; Girls' 2-4; Band 1-4; Ensemble 4; FTA 2-4. HAROLD BECKER--Class Officer 1,4; Class Play 3; Declam. 2-4; Football 1-4; Captain 4; Basketball 1; Track 1-4; Letterman's Club 1-4; Sextet 2; Chorus: Mixed 2,4; Boys' 2. JOHN BERGMAN--Basketball 1-4; Baseball 3,4.



## Seniors



FRANK BERNARD--Football 1-4; Letterman's Club 3,4. NORMAN BEST--Burr Oak Business Ed. 4; Film Staff 1-4; School Patrol 1-4; Class Officer 3; Chorus: Mixed 2,3; Boys' 2. JOHN BRADT--Film Staff 4; Football 3,4; Chorus: Mixed 2-4; Boys' 2.



PETER BUNGUM--Burr Oak Photo Ed. 4; Class Officer 1; Prom Comm. 4; Football 1-4; Captain 4; Basketball 1-4; Band 1-4; Instrument 1; Ensemble 3,4. MARJORIE CONWAY--GAA 2; Mixed Chorus 2. ELIZABETH CONWAY--Library Staff 4; Student Officer 4; Prom Comm. 4; Declam. 1-4; Teacher Aid 3.

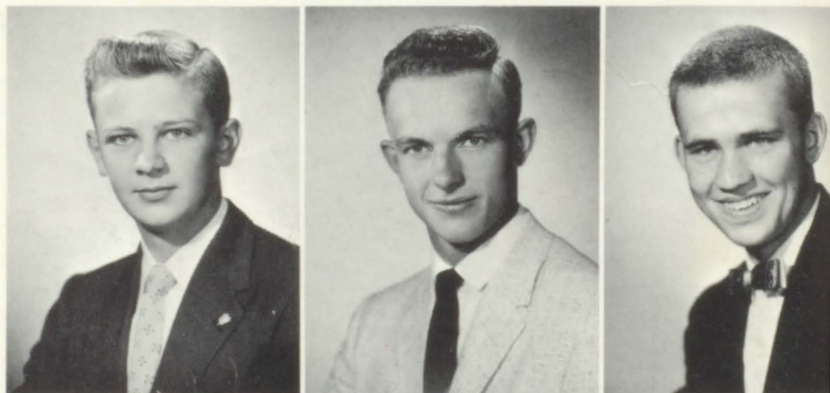


SHIRLEY DAILEY--Gopher Hi-Life Typing Ed. 4; Tumbling Team 4; GAA 1-4; Chorus Mixed 2-4, Girls 2-4; Band 1-4; Ensemble 2,3; Swing Band 2-4. ELIZABETH DAVID--Prom Co-Chr. 3; Declam. 2; GAA 1-3; Chorus Mixed 2-4, Girls 2-4; Band 1-4; FTA 3,4. DIANE DORN--Lewiston High School 1-3; Burr Oak Typing Ed. 4; Trio 4; Chorus Mixed 4, Girls 4.

MARY FRITZ--Office Staff 4; Mixed Chorus 1. PHYLLIS GAMMELL--Chorus Mixed 1,2, Girls' 1,2. JOANNE HALL--Lanesboro 1,2; Homecoming Comm. 3,4, Attendant 3; Class Play 3; Declam. 3; Majorettes 3,4; GAA 3; Trio 4; Sextet 3; Chorus Mixed 3,4, Girls' 3,4; Band 3,4; Burr Oak Staff 4.

## Seniors

HERBERT HALVORSON--Gopher Hi-Life Sports Ed. 3,4; Burr Oak Ed. 4, Staff 3; Student Senate 3; Homecoming Chr. 3, Comm. 3; Class Play 3; Declam. 1-3; National Honor Society 3,4; Mixed Chorus 3,4; Band 1-4; Instrument Soloist 1,2,4. CHARLES HEIKES--Burr Oak Assist. Make-Up Ed. 4; Film Staff 1-4; School Patrol 1-4; Chorus Mixed 2,3, Boys' 2. PAUL HELGERSON--Film Staff 2; School Patrol 3,4; Class Officer 3; Declam. 3; Football 1-4; Track 4; Baseball 2-4; Letterman's Club 3,4; Band 1-4; Instrument Soloist 3,4; Ensemble 2.



ALES HEROFF--Football 1-4; Track Letterman's Club 3,4. ANNA MAE TS--DOMINA JOHAN--Gopher Hi-Staff 2,4; Student Senate 3; Office 3,4; Homecoming Attendant 2; Tumbling 3,4; Chorus 3,4, Girls' 3,4.





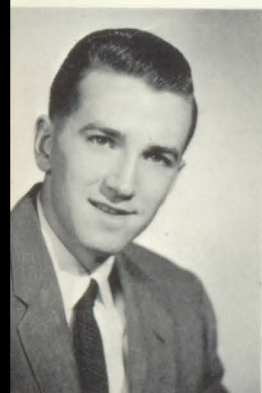
SHARON HORAN--Homecoming Comm. 1;  
GAA 1,2; Chorus Mixed 2-4, Girls' 2-4; FTA  
1-4. MALLORY JEFFERIS--School Patrol  
3,4; Football 4. MARLENE JEFFERIS--Burr  
Oak Assist. Ed. 4; Prom Comm. Chr. 3;  
Homecoming Chr. 4, Comm. 3; Tumbling  
Team 1; GAA 1,2; National Honor Society  
3,4; Girls' State Delegate; Girls' Chorus 2,3;  
Band 1-4; Instrument Soloist 1,2; Ensemble  
1,3,4; FTA 2-4, Pres. 4; Teacher Aid 3,4.



DUANE KLOMPS--VIVIAN LOTH--Chorus  
Mixed 2, Girls' 2-4. SHARON MILLER--  
Gopher Hi-Life Staff 1,2; Typist 4; Home  
Economics Ed. 3; Library Staff 3,4; Camera  
Club 1; Homecoming Comm. Chr. 3; Stu-  
dent Director 3; Chorus Mixed 2-4, Girls'  
2-4; FTA 3,4.



## Seniors



JERRY NARVESON--Burr Oak Advertising  
Ed. 4, Staff 3; Student Senate 4, Officer 4;  
Film Staff 2-4; Homecoming Chr. 4;  
Comm. 4, King; Football 1-4, Captain 4;  
Basketball 1-4; Track 1-4; Baseball 1-4;  
Letterman's Club 1-4. PAUL NICKLAY--  
Film Staff 4; Class Play 3; Band 1,2. NA-  
DINE NIELSEN--Office Staff 4; Prom Comm.  
Chr. 3; Chorus Mixed 2-4, Girls' 2-4; Band  
1,2; FTA 3.



KENNETH NORTHWAY--Football 2-4, MIO  
Track 2; Letterman's Club 3,4. GEORGE  
PAGNO--Student Senate 4; Honorary  
Homecoming Att. 4; Mixed Chorus 4.  
SHARON PATTRICK--Office Staff 4;  
Chorus Mixed 2-4, Girls' 2-4; Teacher  
Aid 3.



ALICE PRESTON--Library Staff 3; Girls' Chorus 1-3; Playground Supervisor 3,4. RUTH ANN RAIN--Gopher Hi-Life Staff 1-4; Junior High Ed. 1; Exchange Ed. 3,4; Burr Oak Ass't Typing Ed. 4; Student Senate 2; Office Staff 4; Class Officer 1; Prom Comm. Chr. 3; Homecoming Comm. 2,3; Class Play 3; Declam. 1,2,4; Triple Trio 4; Sextet 3; Chorus: Mixed 2-4; Girls' 2-4; Band 1-4; Ensemble 1-4. DAVID SCHINDLER--Film Staff 3,4; Football 1-3.

LANNY SEVERSON--Burr Oak Art Ed. 4; School Patrol 3; Basketball 1-4; Letterman's Club 3,4; Chorus: Mixed 2; Boys' 2; Rifle Club 1-4. KATHLEEN STOKES--Library Staff 1; GAA 1; Band 2. PETER SULLIVAN--Football 3,4; Basketball 4; Track 2-4; Baseball 4; Letterman's Club 2-4.

## Seniors

BETTY THEEL--Class Officer 1; Homecoming Comm. 1; Chorus: Mixed 2; Girls' 2,3. ELSIE TOLLEFSON--Gopher Hi-Life Staff 1-3; Burr Oak Make-Up Ed. 4; Student Senate 4; Office Staff 4; Class Officer 1,4; Homecoming Queen; Cheerleader 1,3,4; GAA 3,4; Chorus: Mixed 2-4 Girls' 2-4; Band 1-4; Ensemble 2,3; Swing Band 3. JERRY TOOGOOD--Student Senate 1; Homecoming Comm. 1.



ELIZABETH TUOHY--Gopher Hi-Life Staff 1-4; Burr Oak Ass't Copy Ed. 4; Camera Club 1; Homecoming Comm. 1,2; Class Play 3; Declam. 1-3; GAA 1,2; Chorus: Mixed 2-4; Girls' 2-4; Band 2-4; FTA 2-4; Teacher Aid 3. SARA TUOHY--Burr Oak Staff 3; Student Senate 3,4; Officer 3,4; Office Staff 4; Prom Chr. 3; Homecoming Chr. 3,4; Class Play 3; Declam. 1-3; Cheerleader 4; Trio 1,3,4; Sextet 2; Chorus: Mixed 2-4; Girls' 2-4; Band 1-3; FTA 4. ELIZABETH WOREFN--Gopher Hi-Life Typing Ed. 4; Declam. 2; Girls' Chorus 2,3; and 1-4.





# Class History

Twelve short years ago, in the fall of 1946, thirteen members of the class of 1958 were students at Chatfield for the first time. JOHN AMUNDSON, KARLEEN ANDERSON, BEVERLY AYER, NORMAN BEST, ELIZABETH DAVID, MARY FRITZ, MALLORY JEFFERIS, MARLENE JEFFERIS, JERRY NARVESON, DAVID SCHINDLER, BETTY THEEL, SARA TUOHY and ELIZABETH WORDEN found themselves in the care of Miss York.

The next year PAUL HELGERSON was waiting to join the class which was taught by Mrs. Bernard.

In the third grade the group was ably guided by Miss Duane and Mrs. Chase.

The class, with the addition of ALICE PRESTON, learned the necessity of cleanliness from Miss Morrisroe in the fourth grade.

Miss Daniels steered us through fifth grade as three more students were added--SHARON ALLEN, HERBERT HALVORSON and ANNA MAE HOLETS.

JERRY ASHER was the only newcomer in the sixth grade when our teachers were Miss Sellevold and Miss Halloran.

Then came the day we entered Junior High! In that year CAROL ANN ASLESON, LUCILLE BARNES, HAROLD BECKER, FRANK BERNARD, PETER BUNGUM, MARJORIE BUSHMAN, ELIZABETH CONWAY, SHIRLEY DAILEY, CHARLES HEIKES, SHARON MILLER, RUTH ANN RAIN, LANNY SEVERSON, ELSIE TOLLEFSON, and ELIZABETH TUOHY increased our numbers.

In the eighth grade we went all out under the direction of Miss Barton to win in magazine sales. JOHN BERGMAN, DONNA HORAN, SHARON HORAN, and DUANE KLOMPS were there to help.

As green freshmen we welcomed PHYLLIS ALLEN, MYRNA BAKER, JOHN BRADT, PHYLLIS GAMMELL, CHARLES HEROFF, VIVIAN LOTH, PAUL NICKLAY, NADINE NIELSON, KENNETH NORTHWAY, SHARON PATTRIDGE, KATHLEEN STOKES, and JERRY TOO-GOOD.

In the tenth grade PETER SULLIVAN joined the class in the fun of initiating the freshmen. We also had the honor of our first Homecoming attendant.

As juniors we welcomed JOANNE HALL. We were thrilled to present the class play, "You're Telling Me." Our prom, "Moonlight Excursion," was a wonderful success.

At last the big year arrived! DIANE DORN and GEORGE PAGNO, our AFS foreign exchange student, completed the class of '58. The year seemed to fly by. We were filled with sentiment as Baccalaureate and Commencement arrived all too soon.

# Officers

## Juniors



Marguerite Lucas, Vice President, Mr. Hurley, Advisor, Lester Galbraith, Secretary, Arla Olson, Treasurer, Bob Walker, President.



Donna Asleson  
Archie Asleson  
Kenneth Baier



Wayne Baker  
James Buchanan  
LaDonna Buss  
Rita Butler  
Sharon Butler  
Leonard Colvin  
William Conway



Linda Copeman  
Carl Dailey  
Sharon Dunn  
Ronda Easler  
Ronald Fay  
Bridget Fritz  
Lester Galbraith



Wayne Gammell  
Lois Greenlee  
Lyman Grieve  
Dennis Gunderson  
Mary Hedberg  
Charlotte Heikes  
Eugene Horsman



Dennis Hove  
Teresa Hunfield  
Lois King  
Shirley Loth  
Susan Lowrie  
Marguerite Lucas  
William Means



Katherine Meunier  
Jean Mitchell  
Arla Olson  
Patrick O'Neill  
Gene Rehling  
Gorden Richards  
Jerry Richter



Larry Rogers  
Robert Rose  
Ronald Shoeppner  
Barbara Schrader  
Rosemary Scott  
Richard Severson  
Beata Shaw



Bonnie Stecker  
Laurie Stephens  
Karen Stephens  
Doris Strande  
Robert Walker  
Robert Warner  
Sharon Willie





# Officers

Mr. Skooglun, Advisor, Mr. Savre, Advisor, Becky Holets, Treasurer, Lois Bernard, Secretary, Jeanine Pattridge, Vice President, John Bungum, President, Miss Swiggum, Advisor.

## Sophomores

Ronald Allen  
Phyllis Amundson  
Ronald Anderson  
Wayne Anderson  
Larry Applen



Dean Arnold  
Gerald Asleson  
Steven Bailey  
Robert Baker  
Ruth Barnes



Lois Bernard  
Phyllis Borgen  
John Bungum  
William Burnap  
Virginia Bushman



Vernon Clark  
Judy Chase  
Judy Denny  
Sharlene Dressler  
Sonova Egge



James Ellis  
Charlotte Finley  
Michael Finley  
Paula Fisher  
Dan Gathje



William Gwilt  
William Hall  
Duane Hanson  
Geraldine Hanson  
Lurine Hare



Lucille Hare  
Amy Heikes  
Carol Hermanson  
Donald Heroff  
Marilyn Hisey



# Sophomores

Becky Holets  
Dixie Horsman  
Neva Horsman  
Gary Houghtelin  
Judith Hutton



Karen Johnson  
Paulette Kinnear  
Kenneth Lacey  
James Lobland  
Willis Martin  
Patricia Matousek



Peter Matousek  
Thomas McMahon  
Ronald Miland  
Janice Northway  
Carol Ober  
Carmen Odegarden



Joanne Owens  
Jeannine Pattridge  
Betty Lou Pavliss  
Gale Priebe  
Carolyn Raveill  
Marvin Richer



Darrell Richter  
Erika Schieffelbein  
Irmgard Schieffelbein  
Gary Schrader  
Donald Severson  
Judith Spelhaug



David Stemp  
James Strande  
Judith Strande  
Robert Sullivan  
James Thieke  
David Tuohy



Donald Turner  
Karen Vrieze  
Mildred Waadevig  
Patricia Ward  
Janet Winslow  
Duane Worden







## Ninth Grade

FIRST ROW, L. to R.: A. Goldsmith, K. Vesey, M. Winslow, M. Lynch, R. Ellis, B. Stokes, M. Horan, J. Jefferis, T. Lowrie, R. Dailey, M. Dahley, C. Nelson, R. Ellis, D. Danielson. SECOND ROW: B. Anderson, K. Greenlee, D. Dahl, L. Jackson, D. Olson, M. Martin, K. Klomps, R. Peters, J. Owens, T. Tuohy, S. Meyer, D. Halvorson, M. Evans, O. Wright. THIRD ROW: G. Plank, K. Wurtzler, A. Batt, W. Egge, A. McConnell, J. Rathbun, P. Toogood, W. Cope-  
man, L. Heikes, T. Nagel, R. Harwood, J. Thieke, W. Ward, R. Schoeppner, Mrs. Healy, advisor. FOURTH ROW: Mr. Bernatz, advisor, K. Dorn, K. Trulson, R. Sexton, R. Vreize, H. Kalstabakken, L. King, L. Gathje, S. Amundson, R. Hemker, G. Baier, J. Sparrow, R. Cramer.

## Eighth Grade

FIRST ROW, L. to R.: R. Zinke, J. Birch, M. Waadevig, M. Street, R. Rehbein, P. Cravath, S. Holets, A. Nicklay, R. Arnold, R. Baker, R. Sample, J. Conway, T. French, T. Yust, M. Daily, N. Nielson. SECOND ROW: Miss Barton, Advisor, R. Vesey, J. Daniels, J. Tuohy, R. Stemp, N. Turner, J. Severson, S. Hall, T. Schroeder, J. Niemeyer, S. Annis, B. Dailey, M. Barnes, B. Siegel, V. Nagel, J. Narveson, J. Lobland. THIRD ROW: S. Finley, B. Williams, J. Sullivan, A. Gunderson, S. Eisenman, A. Strange, S. Heikes, M. McConnell, R. Heroff, C. Worden, K. Helgersen, T. Tragstad, A. Reese, J. Bernard, V. Baier, D. Jacobson, W. Clark. FOURTH ROW: C. Egge, D. Miller, F. Strain, S. Lowrie, A. Bernard, J. Jacobson, G. Bamlet, D. Deyo, E. Prigge, R. Rain, D. Schoeppner, R. Schrader, M. Walker, W. Dailey, M. Hanson, M. Ayer, Mr. Anderson, Advisor.







FIRST ROW, L. to R.: E. Button, J. Birch, J. Asleson, G. Colvin, K. Heroff, B. Dailey, M. Horsman, D. Hanson, W. Anderson. SECOND ROW: B. Follensbee, L. Asher, R. Bock, G. Bamlet, R. Goldsmith, J. Fritz, G. Hoffman, J. Galbraith, L. Arnold, W. Anderson. THIRD ROW: N. Amundson, S. Hanson, R. Ferguson, S. Horsman, B. Holtegard, D. Harwood, R. Bradt, C. Bernard, S. Crowson, D. Borgen. FOURTH ROW: Miss Kelly, advisor, L. Grieve, P. Herrick, R. Brogan, J. Giehtbrock, D. Bailey, J. Burnap, C. Beatty, M. Amundson, L. Hoiseth.

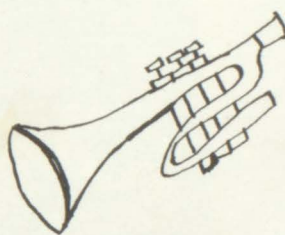
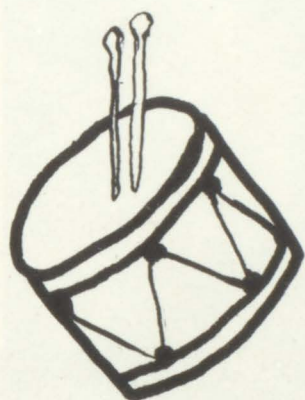
## Seventh Grade

FIRST ROW, L. to R.: D. Horsman, R. Sutherland, V. Tuohy, M. Strain, R. Smith, T. Schroeder, M. Richer, G. Stemp, E. Lynch, L. Strande. SECOND ROW: K. Lacey, R. Nelson, S. Horsman, R. Smock, G. Narveson, D. Shaw, E. Metzger, I. Meland, D. Tuohy, J. Mundell. THIRD ROW: Mrs. Bernatz, advisor, D. Horman, D. Stephens, P. Jacobson, M. Martin, C. Kohlmeyer, M. Rudlong, A. Skruknud, E. Wright, D. Pease, M. Kalstabakken. FOURTH ROW: J. Riddle, J. Keefe, K. Olson, L. Krueger, G. Kruell, J. Sparrow, D. Hutton, K. Warner, S. Worden, Mr. Toppin, advisor.





# MUSIC



# A Band



FIRST ROW, L. to R.: R. Rain, R. Ellis, V. Nagel, J. Hall, M. Finley, R. Barnes, N. Turner, S. Egge, R. Severson, C. Odegarden, E. Tollefson, J. Hockema, C. Asleson, K. Anderson. SECOND ROW: A. McConnell, D. Asleson, E. Worden, D. Jacobson, M. Jefferis, H. Halvorson, S. Dailey, L. Applen, D. Turner, K. Baier, M. Barnes, E. Davis, L. King, M. Evans, P. Bungum. THIRD ROW: J. Lobland, J. Strande, L. Greenlee, K. Trulson, S. Bailey, R. Warner, R. Anderson, L. Barnes, L. King, L. Rogers, T. Nagel, W. Andersen. STANDING: B. Holets, L. Stevens, P. Helgersen, E. Tuohy, M. McConnell, B. Andersen, Mr. Tall, Director, J. Jefferis.





## B Band

FAR LEFT, L. to R.: R. Ellis, J. Lobland, E. Bernard; V. Baier, W. Stokes, S. Hall, W. Andersen, T. French, D. Bailey, S. Strange, J. Gardner, W. Hall. MIDDLE: A. Strange, D. Halvorson, W. Andersen, S. Brogan, B. Siegel, P. Martin, B. Fenske. RIGHT: D. Bernard, J. Daniels, E. Metzger, B. Ward, J. Severson, K. Greenlee. Mr. Tall, Director.

## Swing Band

1st ROW, L. to R.: K. Anderson, C. Asleson, C. Odegarden, R. Severson, S. Dailey. 2nd ROW: R. Rose, M. Evans. 3rd ROW: W. Anderson, T. Nagel, L. Rogers. 4th ROW: J. Jefferis, R. Warner.





## Woodwind Trio

LEFT to RIGHT: Ruth Barnes, Sonova Egge, Nancy Turner.



## Brass Quartet

LEFT to RIGHT: Peter Bungum, Wayne Andersen, Terry Nagel, Mickie Evans.

## Soloists

LEFT to RIGHT: Vickie Nagel, Robert Ellis, Karleen Anderson, Sonova Egge, Mickie Evans, Nancy Turner. BACK ROW: Ruth Barnes, Lucille Barnes, Robert Rose, Herbert Halvorson, Wayne Andersen, Terry Nagel.





# Woodwind Quartet

LEFT to RIGHT: Robert Rose, Robert Ellis,  
Vickie Nagel, Marlene Jefferis.



# Majorettes

LEFT to RIGHT: Trudy Schroeder, Doris  
Swande, Joanne Hall, Beverly Ayer, Ronda  
Easler.



# Ensemble

LEFT to RIGHT: Robert Ellis, Vickie Nagel, Herbert Halvorson, Sonova Egge, Nancy Turner, Marlene  
Jefferis.





## Girls' Chorus

FIRST ROW, L. to R.: K. Johnson, P. Borgen, K. Meunier, D. Asleson, S. Dailey, D. Strande, L. Stephens, B. Ayer, D. Horan, C. Ober, L. Barnes, K. Anderson, S. Horan, S. Allen, M. Waadevig, B. Shaw, K. Stephens, B. Holets. SECOND ROW: S. Tuohy, J. Spelhaug, J. Northway, D. Horsman, S. Butler, B. Pavlish, S. Egge, E. Tuohy, R. Rain, J. Hall, C. Heikes, P. Ward, C. Asleson, S. Dressler, L. King, J. Chase, E. David, L. Buss. THIRD ROW: R. Butler, K. Vrieze, E. Tollefson, L. Bernard, D. Dorn, R. Barnes, B. Schrader, P. Fisher, N. Horsman, J. Pattridge, C. Ode garden, R. Scott, S. Miller, S. Loth, A. Heikes, L. Greenlee, V. Loth, B. Theel, S. Pattridge.



Karleen Anderson, James  
Lobland, Betty Lou Pavlish-  
Accompanists.

## Senior Trio

Diane Dorn, Sharon Allen, Joanne Hall



## Triple Trio

Shirley Dailey, Karleen Anderson, Charlotte Heikes, Rosemary Scott, Barbara Schrader, Beverly Ayer, Ruth Ann Rain, Laurie Stephens, Sara Tuohy.







1st ROW, L. to R.: M. Waadevig, J. Birch, M. Daily, K. Wurtzler, M. Rudlong, M. Barnes, J. Niemeyer, C. Worden, B. Andersen, J. Jefferis, A. Goldsmith, J. Ilgen, G. Stemp. 2nd ROW: J. Galbraith, D. Borgen, D. Jacobson, C. Bernard, M. Amundson, J. Sullivan, G. Baier, M. McConnell, R. Arnold, M. Lynch, N. Turner, M. Horan, V. Nagel. 3rd ROW: J. Asleson, D. Stephens, G. Narveson, S. Eisenman, M. Walker, R. Hemker, H. Kalstabakken, K. Klomps, T. Nagel, A. McConnell, J. Bernard, R. Ellis, M. Strain, R. Tuohy.

## Junior High Chorus

1st ROW, L. to R.: R. Zinche, M. Street, L. Arnold, J. Riddle, E. Metzger, B. Williams, M. Martin, J. Sparrow, P. Jacobson, I. Meland, W. Andersen, R. Smith, C. Sullivan, B. Lynch. 2nd ROW: K. Greenlee, S. Crowson, K. Helgersen, S. Horsman, S. Hall, T. Schroeder, M. Martin, C. Beatty, J. Severson, V. Baier, J. Daniels, D. Shaw, R. Vesey. 3rd ROW: W. Andersen, T. French, T. Yust, E. Wright, B. Siegel, D. Halvorson, O. Wright, S. Worden, A. Strange, B. Ward, B. Egge, R. Ellis, T. Schroeder, C. Goldsmith.







Sophomore Trio-Sharlene Dressler, Becky Holets, Ruth Barnes.

Double Mixed Quartet-1st ROW, L. to R.: L. Barnes, N. Horsman, S. Miller, N. Nielson. 2nd ROW: J. Asher, H. Becker. S. Bailey, H. Halvorson.

Boys Quartet-L. to R.: Jerry Richter, Richard Severson, Wayne Andersen, Herbert Halvorson.

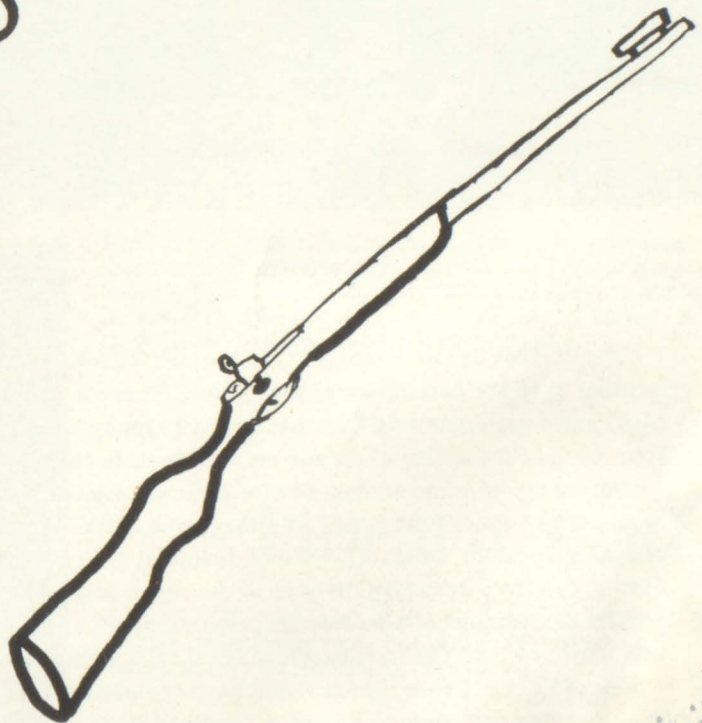
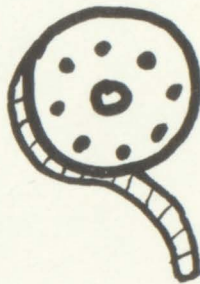
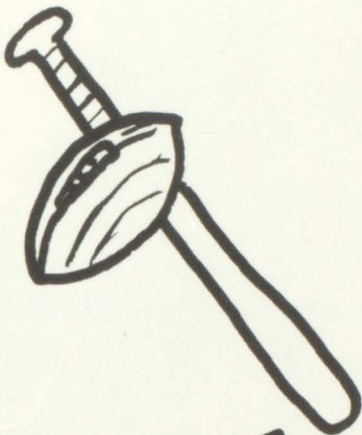
## Mixed Chorus

1st ROW, L. to R.: L. Stephens, B. Holets, B. Shaw, S. Horan, S. Allen, S. Pattridge, N. Nielson, K. Anderson, A. Olson, L. Barnes, D. Horan, C. Heikes, D. Strande, S. Dailey, K. Stephens, D. Asleson, K. Meunier. 2nd ROW: M. Lucas, L. Bernard, B. Theel, L. Greenlee, C. Asleson, S. Miller, R. Scott, J. Hall, B. Schrader, P. Fisher, S. Loth, N. Horsman, D. Dorn, R. A. Rain.





# ACTIVITIES



# Student Senate



SEATED, L. to R.: K. Anderson, E. Tollefson, J. Narveson, Secretary-Treasurer, S. Tuohy, President, E. Conway, Vice-President, B. Burnap, R. Stemp, M. Evans. STANDING: Mr. Haugen, Advisor, K. Greenlee, L. Buss, N. Horsman, J. Toogood, G. Pagno, M. McConnell, L. Barnes, D. Borgen, (not pictured-R. Rose)

The Student Senate consists of representatives from the student body who make helpful suggestions as to the betterment of the school. There is a boy and a girl from each class in senior high, and a representative from each class in junior high. In addition, there are representatives from each of the active clubs and organizations in the school.

During the year the Student Senate assumes responsibility for many of the school activities, among which are Homecoming, the Magazine Drive, the Christmas Party, and the direction of the class elections. They also extend financial aid to groups if the need should arise. A good example is the purchasing this year of the senior high cheerleading outfits.

The Student Senate also represents the school in various civic activities. Two of the members participate on the foreign student exchange committee. Active support was given toward a proposed Civic Center which would have included a youth center. This year the group has been studying and working toward a Teen-age code of behavior and a code of dress.

Officers this past year were: Sara Tuohy, president; Elizabeth Conway, vice-president; and Jerry Narveson, secretary-treasurer.

We would like to mention the final fruits of last year's Student Senate in connection with the Magazine Drive. Ninety-four percent of the student body is fully protected against paralytic polio.



# Office Staff



SEATED, L. to R.: B. Holets, S. Tuohy, C. Asleson, N. Nielson, S. Pattridge, R. Scott. STANDING: P. Borgen, L. Grøenlee, D. Horan, M. Fritz, E. Tollefson, L. Buss, L. Barnes, S. Dresler.

# F. T. A.



SEATED, L. to R.: S. Horan, L. Barnes, K. Anderson, Vice-President, M. Jefferis, President, L. Buss, Treasurer, L. King, Secretary, E. David. STANDING: E. Tuohy, E. Conway, D. Horan, K. Vrieze, J. Chase, P. Ward, R. Barnes, S. Miller, C. Asleson, B. Shaw, D. Asleson, S. Tuohy.

# Library Staff

L. to R.: K. Stokes, B. Shaw, S. Allen, S. Wille, S. Loth, S. Miller, Miss Okerstrom, E. Conway, C. Ahern, J. Mitchell, M. Hedberg, C. Heikes, D. Strande.





# Homecoming

Jerry and Elsie

The Homecoming Activities of 1957 got into full swing with the annual snake dance and bonfire. This created much enthusiasm, and the excitement reached a peak as Fairy Godmother Jeanette Thieke waved her magic wand over all the candidates.

Jerry Narveson and Elsie Tollefson were chosen to reign over the activities as King and Queen. Their attendants were Kay Meunier as Junior Attendant and Jeannine Pattridge as Sophomore Attendant. Our exchange student, George Pagno, was chosen as Honorary Prince.

The day of Homecoming we held our parade with all grades participating. The eighth grade float won first prize and the F.T.A. float placed second.

Despite the rain, the Gophers came out on top and won the game against Plainview. After the game, a dance was held with music furnished by the Naturals. This ended a successful Homecoming for another year.

1st ROW, L. to R.: Charles Bernard, crown bearer; Cheryl Mertz, flower girl; Diane Allen, flower girl; Chris Brekke, crown bearer. 2nd ROW: Harold Becker, Co-Captain; George Pagno, Honorary Prince, Jerry Narveson, King; Elsie Tollefson, Queen; Kay Meunier, Junior Attendant; Jeannine Pattridge, Sophomore Attendant.







"The Big Moment"



1st Prize - 8th Grade



2nd Prize - FTA

It will be a hot game tomorrow

"Royalty"





## Film Staff

SEATED, L. to R.: N. Best, C. Heikes, G. Rehling, E. Horsman, P. O'Neill, D. Turner, M. Finley, V. Clark. STANDING: W. Hall, J. Denny, J. Strande, J. Richter, D. Hove, J. Asher, J. Amundson, B. Walker, J. Narveson, D. Schindler, J. Buchanan, L. Colvin, P. Nicklay, J. Bradt.

## School Patrol

FIRST ROW, L. to R.: D. Stemp, J. Richter, S. Bailey, K. Trulson, N. Best, B. Burnap. SECOND ROW: J. Denny, D. Richter, M. Jeffris, C. Heikes, G. Rehling.





# Burr Oak



Miss Kelly  
Advisor  
Herbert Halvorson  
Editor  
Marlene Jefferis  
Assistant Editor



Jerry Narveson  
Advertising Editor



Myrna Baker  
Copy Editor  
Elizabeth Tuohy  
Assistant Copy Editor



Peter Bungum  
Photography Editor  
Elsie Tollefson  
Make-Up Editor  
Charles Heikes  
Assistant Make-Up Editor



Diane Dorn  
Typing Editor  
Ruth Rain  
Assistant Typing Editor  
Norman Best  
Business Editor  
Lanny Severson  
Art Editor



# Gopher



# Hi Life

Miss Swiggum, advisor, and Carol Asleson, editor.

EDITORS: 1st. ROW: R. Rain, Exchange, C. Asleson, Editor; S. Dailey, Typing. 2nd. ROW: K. Anderson, Music; H. Halvorson, Sports.

ASSISTANT EDITORS: 1st. ROW: D. Asleson, Exchange, L. King, Editor; S. Egge, Music. 2nd. ROW: L. Greive, Sports; B. Schrader, Typing.



TYPISTS: E. Worden, R. Scott, S. Miller, B. Shaw, L. Barnes.

REPORTERS: 1st. ROW: I. Meland, A. Goldsmith, J. Spelhaug, M. Hedberg, D. Turner, S. Dresler, J. Bernard, N. Turner. 2nd. ROW: S. Tuohy, L. Buss, D. Strande, L. Bernard, H. Kalstabakken, D. Horan, B. Pavlish, P. Ward, W. Conway.







The satisfied cast

# The Boarding House Reach

"The Boarding House Reach," a three-act comedy, was the entertaining presentation of the Junior Class.

Wilbur Maxwell (Jim Buchanan) and Hercules Nelson (Bill Conway) stirred up amusing situations in their attempts to raise money for a motor bike for Wilbur. Taking advantage of the absence of Mr. and Mrs. Maxwell (Gene Rehling and Mary Hedberg), the boys open a boarding house to such eccentric people as: Lucy Burns, a walking encyclopedia (LaDonna Buss); Mrs. Mott, who never speaks (Jean Mitchell); Herman "Ninety-Volt" Jones, a punch-drunk pug (Gene Horsman) and his wrestling wife, Ruby (Barbara Schrader); Mr. Potter, an insurance salesman (Lester Galbraith); Limpy McGuire, a shifty character (Larry Rogers) and his wife (Lois King). Wilbur's sisters Connie (Donna Asleson) and Betty Lou (Sharon Willie) find themselves serving as unwilling cooks and maids.

The resolution of the situations that arise from the Maxwells' unexpected return, and Mr. Maxwell's false arrest as a bank robber by Detective Connolly (Jerry Richter) provided much enjoyment.

The play was directed by Mr. Robert Toppin who was assisted by Ronda Easler and Kay Meunier as student directors.

Now wait just a minute!

One. . two. . three. . four. . one. . two

Do you think it will work?

That money is hidden somewhere. . .







## Art Club

Barbara Andersen, Nancy Turner, Tom French, Bob Cramer, Anne McConnell, Mary McConnell, Ruth Vesey.

Elizabeth Metzger, Linda Arnold, Rodney Rehbein, Bill Siegel, Rita Arnold, Mary Ann Martin.



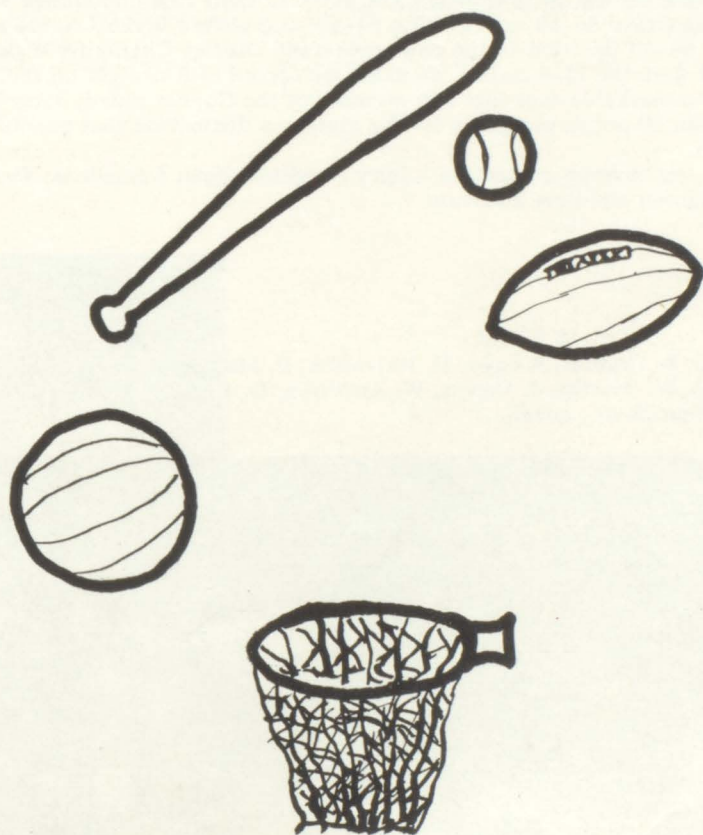
## Junior Rifle Club

1st ROW, L. to R.: G. Stemp, R. Vesey, T. French, B. Holets, L. Stephens, T. Yust, W. Uling, T. Schroeder, S. Strange, C. French. 2nd ROW: R. Stemp, N. Turner, B. Pavlish, A. Strange, K. Anderson, D. Harwood, R. Harwood, D. Stemp, K. Olson, K. Stephens, D. Stephens, R. Rehbein. 3rd ROW: S. Egge, S. Dresler, W. Egge, D. Turner, W. Andersen, L. Severson, W. Gwilt, D. Severson, B. Burnap, J. Burnap, M. Ayer, E. Button.





# SPORTS





#### A TEAM

1st ROW, L. to R.: Pete Sullivan, Jerry Asher, Jerry Narveson, Pete Bungum, Lester Galbraith. 2nd ROW: Gerald Bernatz, coach, Larry Rogers, John Bungum, Bob Walker, John Amundson, Lanny Severson, Bob Rose, Don Turner, manager.

## Basketball

The 1957-58 Gophers rolled to a 15-4 season mark and a 2nd place finish in the tightest District One Conference race in several years. In district tournament play the Gophers were eliminated in the quarter-finals by an inspired Spring Valley team 63-50.

Bernatz's Gophers opened the season with wins over Eyota, 62-51, and Spring Valley, 66-63, before being handed their first defeat by Owatonna 61-54. They then rolled to ten straight victories beating Lanesboro 71-69, Houston 81-61, St. Charles 59-54, Mabel 54-50, Spring Grove 88-70, Canton 58-57, Harmony 58-46, Stewartville 63-43, Caledonia 70-61, and Rushford 98-73. The Gophers then suffered their first conference loss to Peterson 72-69, rebounded against Spring Grove 86-68, and Preston 69-50, and visited Wykoff in the season finale for the title game only to drop a 68-60 decision to the conference and District Champion Wykats.

Among the Gopher accomplishments were the 15-4 record, an unbeaten record of 8 straight on their home floor, the ten game win streak, and the remarkable fact that two member of the Gopher squad, Jerry Narveson and Bob Walker, both averaged more than 20 points per game for the season, a distinction that possibly no other high school team in the state can claim.

Seven members of the squad will be lost through graduation--Jerry Narveson, John Amundson, Jerry Asher, Pete Bungum, Lanny Severson, John Bergman and Pete Sullivan.

#### B TEAM

1st ROW, L. to R.: T. Tuohy, D. Worden, B. Cramer, B. Egge, D. Halvorson, P. Matousek, B. Hall, M. Evans, D. Danielson. 2nd ROW: J. Ellis, T. Nagel, W. Martin, J. Owens, W. Andersen, D. Richter, L. King, D. Severson, R. Anderson, D. Tuohy, R. Harwood, Robert Savre, coach.





Pete Bungum  
Guard



Bob Walker  
Center

Jerry Narveson  
Forward

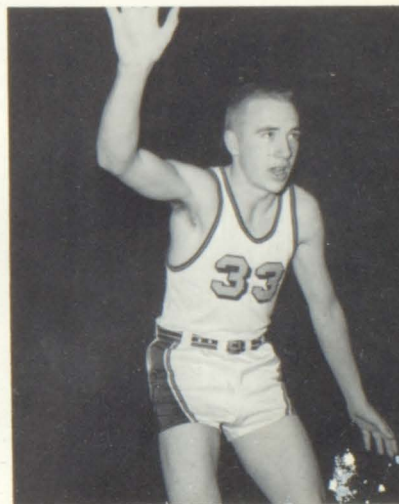


## Basketball



Lanny Severson  
Forward

John Amundson  
Forward

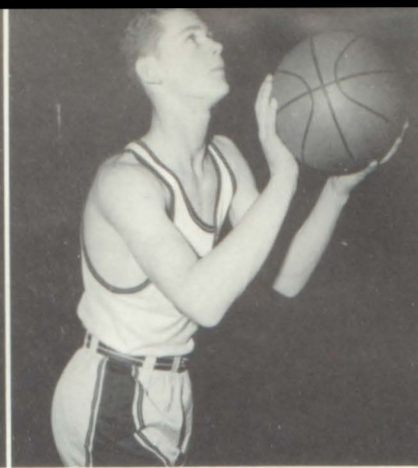


Jerry Asher  
Guard

John Bergman  
Center



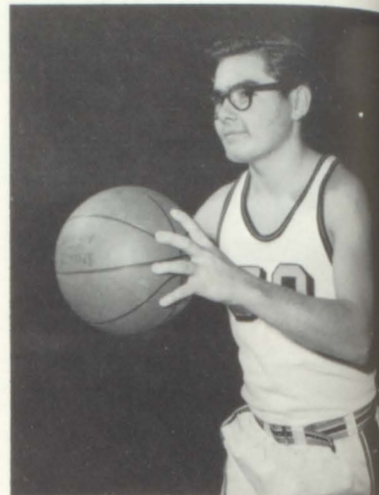
Pete Sullivan  
Guard



Larry Rogers  
Forward



Lester Galbraith  
Guard



## Junior High Basketball

1st ROW, L to R.: L. Strande, W. Andersen, T. French, T. Yust, R. Stemp, J. Conway, R. Rehbein, L. Asher, J. Tuohy, N. Nielson. 2nd ROW: J. Lobland, T. Schroeder, G. Narveson, R. Tuohy, M. Ayer, C. Egge, D. Goede, T. Tragstad, D. Stephens, B. Siegel. 3rd ROW: D. Miller, F. Strain, A. Reese, J. Jacobson, S. Lowrie, A. Bernard, E. Prigge, L. Krueger, D. Harwood, M. Hanson, Burt Anderson, Coach.







1st ROW, L. to R.: J. Narveson, P. Sullivan, H. Becker, D. Hove, J. Amundson, J. Bungum, D. Gunderson, J. Asher, P. Bungum, J. Buchanan. 2nd ROW: Mr. Ziebell, coach, M. Evans, R. Harwood, V. Clark, F. Bernard, B. Walker, D. Richter, L. King, J. Bradt, P. Helgerson, E. Horsman. 3rd ROW: D. Turner, Manager, R. Ellis, S. Amundson, M. Jefferis, J. Ownes, L. Colvin, W. Gwilt, D. Tuohy, W. Copeman, Mr. Savre, Ass't. coach.

## A Team Football

The fortunes of the football Gophers took many bounces as coach Bill Ziebell's eleven rolled to a tie for the Whitewater conference title and an overall record of 4-3-1.

Injuries and illness plagued the Gophers, whose reserve strength was so severely tapped by season's end, that one-touchdown losses to Wykoff and Preston could well have been victories. The Gopher offense was especially slowed when Chatfield's top ball carriers, Jerry Narveson and Jim Buchanan, could not escape the casualty lists.

The highlight of the season was the victory over unbeaten Stewartville, 13-2, which enabled the Gophers to share in the conference championship. The game saw Chatfield get a two touchdown lead, one on a brilliant 85 yard sideline dash by fullback Jim Buchanan. Narveson received a shoulder injury early in the game and the last half saw the Gophers defense successfully contain a strong Stewartville offense.

Only two teams scored more than one touchdown against the line play of Harold Becker, Dennis Gunderson, Frank Bernard, Bob Walker, Jerry Asher, Pete Sullivan, Chuck Herooff, John Bungum, and the other Gopher linemen. All-Conference honors went to Narveson for the second time, sophomore John Bungum, and Harold Becker, his third such honor. Buchanan was the Junior representative for this honor.

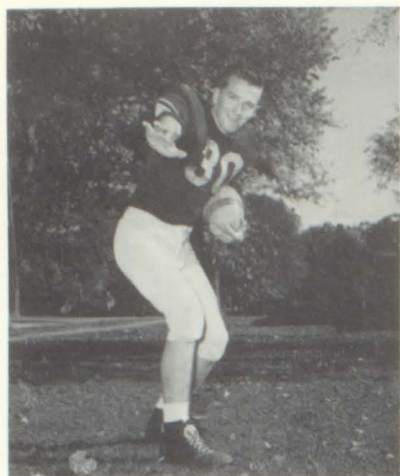
Playing their last season for CHS were senior regulars John Amundson, center, Jerry Asher, end, Harold Becker, tackle, Frank Bernard, tackle, Pete Bungum, quarterback, Chuck Herooff, end, Jerry Narveson, halfback, Ken Northway, halfback and Pete Sullivan, end. Also lost were two senior reserves, back Jack Bradt and lineman Mallory Jefferis.

## Junior High

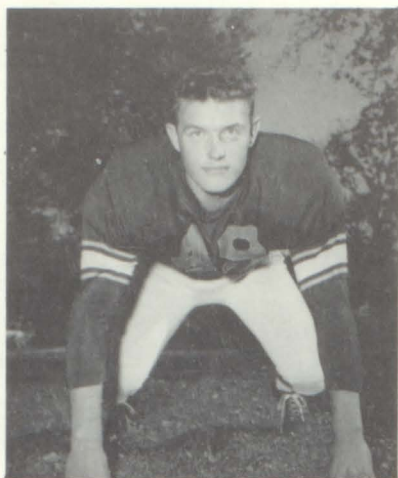
1st ROW: E. Wright, T. Schroeder, C. Goldsmith, D. Hanson, T. French, L. Asher, E. Button, J. Narveson, Mr. Anderson, coach. 2nd ROW: A. Reese, J. Fritz, K. Warner, G. Narveson, D. Stephens, D. Pease, B. Siegel, M. Hanson.







Jerry Narveson  
All-conference back



Harold Becker  
All-conference tackle



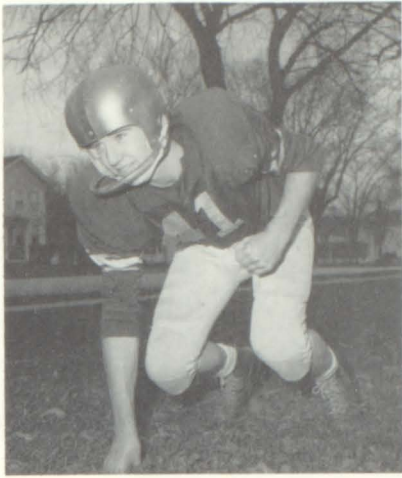
Pete Bungum

## Football Captains

Mr. Savre, assistant coach, Harold Becker, Jerry Narveson, Pete Bungum, Mr. Ziebell, coach.





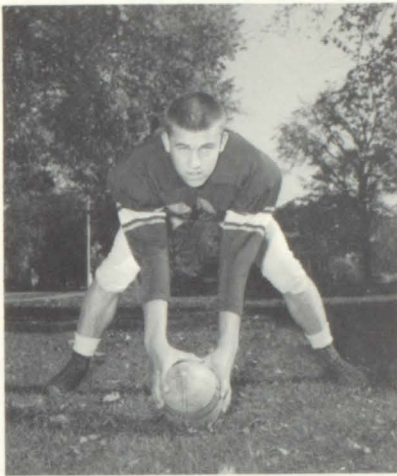


Jerry Asher



Jack Bradt

## Seniors



Paul Helgerson

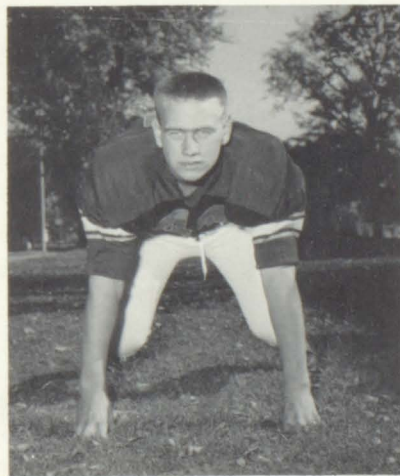


Mallory Jefferis

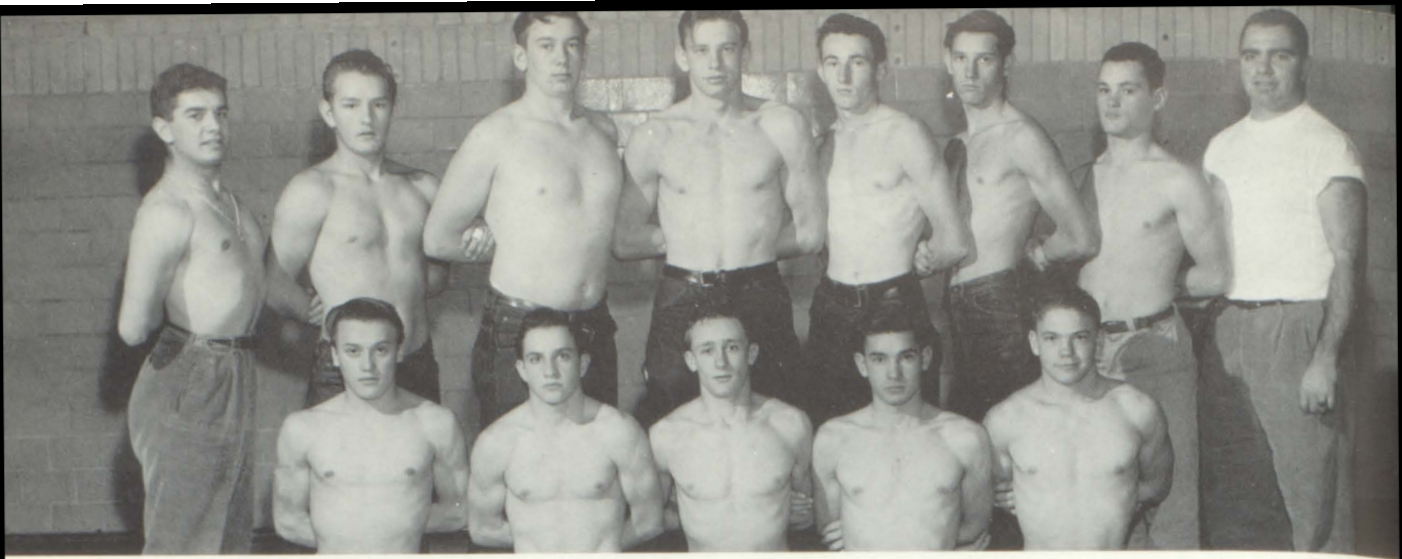
Pete Sullivan

Frank Bernard

John Amundson







## Wrestling

KNEELING: J. Thieke, J. Bradt, E. Horsman, G. Bamlet, D. Deyo. STANDING: G. Pagno, W. Copeman, G. Rehling, D. Gunderson, W. Gwilt, O. Matzke, R. Sullivan, Mr. Ziebell, Coach.

## District Champs 1956-57

The 1957 baseball season found the Gophers enjoying one of their most spectacular seasons in history. The Gophers advanced to the finals in Region One only to bow to Austin 3-2. Sandwiched between an opening error-ridden loss to St. Charles, 11-10, and the final against Austin, the Gophers rang up seven straight wins, many of them comeback performances.

The highlight of the season was the Regional game when Chatfield upset Rochester 6-5 and then, after a two-run homer by Jerry Narveson, dropped the extra inning contest to the veteran Austin team 3-2. Narveson was the tourney's outstanding performer with a two-run homer in both games.

The Gophers started conference play by beating favored Harmony 5-1, Wykoff 9-8 on a bases loaded homer by Narveson and a four-bagger by Rod Copeman, and Preston 6-1. Spring Valley fell by a 3-2 score and the Gophers' blazing bats pounded Lanesboro to submission by a 16-6 count, the win giving Chatfield the western half championship.

Chatfield won district honors in a bitterly contested game with Caledonia on a wet Harmony diamond. Chatfield's win was again highlighted by a three-run homer by Narveson and a five hits in five trips performance by Harley Olstad.

Coach Bob Savre fielded a hustling, base-running team with above average strength. Narveson pitched every inning for the Gophers and led the team at the plate. His catcher was Peter Bungum and the infield had Bob Walker at first, Jerry Asher at second, Harley Olstad at shortstop, and Rodney Copeman at third. John Amundson played left field, Bob Rose was in center, and freshman John Bungum was the rightfielder over the last games of the season. Connie Fingerson played the outfield during the season, but missed the regional to take up a summer job.

Seniors lost from the squad were Olstad, Copeman, Fingerson, and Philip D. Niemeyer. However, a strong squad returned to defend the District One title in 1958.

KNEELING: B. Walker, J. Asher, J. Amundson, P. Bungum, J. Narveson, B. Rose, H. Olstad, R. Copeman. STANDING: Mr. Savre, Coach, P. Helgersen, P. D. Niemeyer, J. Bungum, C. Waters, C. Fingerson, L. Grieve, W. Hall, J. Bergman.







## Junior High Cheerleaders

Doris Shaw, Olivia Wright, Sharon Hall.

## G. A. A.

1st ROW, L. to R.: C. Sullivan, B. Andersen, J. Jefferis, D. Shaw, M. Barnes, M. Horan, J. Strande, N. Amundson, P. Matousek, B. Follensbee, R. Vesey. 2nd ROW: S. Dailey, L. Barnes, M. Walker, D. Strande, R. Barnes, D. Horan, President, E. Tollefson, Vice-President, B. Pavlish, Secretary, K. Anderson, Student Senate Representative, P. Jacobson, B. Shaw, M. Amundson. 3rd ROW: A. McConnell, L. Bernard, P. Fisher, M. McConnell, C. Odegarden, H. Kalstabakken, K. Klomps, R. Arnold, S. Dresler, T. Schroeder, S. Horan.



# Senior High Cheerleaders



Sara Tuohy, head cheerleader



Elsie Tollefson



Sara Tuohy, Sonova Egge, Lois Bernard, Elsie Tollefson, Becky Holets

Becky Holets

Sonova Egge

Lois Bernard







# Snaps

Where's the ball?

Up and in

Strrr--etch



Two points

Let's go, go, go!





"Victory"



"Almost - but not quite!"



"Traffic Jam"



"Ah! Food!"

"The Rhythm Rockets"



"Sput and Nik"





## THE CHATFIELD NEWS

Your Home Town Newspaper

Eugene Lehman

Publisher

"102 Years of Service"

## SILVER GRILL

Home Cooked Meals and Pastries

Fried Chicken and Seafoods

Carry Out Orders Available

Manager

VELLA NARVESON

## OLIVER

"Finest in Farm Machinery"

## OLSTAD STANDARD SERVICE

Chatfield

Minnesota

Sales - Service

## PARTRIDGE

## LUMBER COMPANY

"Best Wishes

to the

Graduates"

## JOHN MANAHAN CO.

Grinding and Mixing

Grains and Feeds

"Seeds and Feeds that fit your needs"

Chatfield Maid Feeds

Minnesota Twine

Our 35th Anniversary

1923-1958

*Lynch's*

Chatfield's Shopping Center

*Give to the world the best that you have  
And the best will come back to you.*

## WIEDENHEFTS SUPER FOOD MARKET

## OUR OWN HARDWARE

Hardware and Supplies

Super Mix Paint and Varnishes

Phone 191

**REX CAFE**

Home Cooked Meals and Pastries  
Fountain Service

Owner Daryle Michelson

**DIETZ  
BARBER  
SHOP**

**CHATFIELD CLEANERS**

Dry Cleaning – Tailoring  
All Kinds of Alterations

Phone 244-J

Personalized care means longer wear

**CHATFIELD IMPLEMENT AND  
TRUCK CO.**

Oldsmobile – Case Machinery  
GMC Trucks

Phone 193

*Best Wishes  
from*

**NAGEL'S GARAGE**

Dale Nagel Owner

**CHATFIELD MOTOR CO.**

Chevrolet  
Sales – Service  
New Idea – Allis-Chalmers  
Farm Machinery  
D-X Lubrication Motor Fuel Oil

Phone 25  
Chatfield Minnesota

**SKELLY OIL SERVICE**

“For the best in car service come in at  
the sign of Skelly”

Bulk Service – Wally Mitchell  
Station—  
Harold Buchanan and Robert Owens

Chatfield Minnesota

**KIVELL HARDWARE**

Marshall Wells Store  
Your Complete Hardware Store  
Satisfaction Guaranteed

Phone 80 Chatfield



*Congratulations to  
Class of '58*

PAVLISH LUMBER COMPANY

SECURITY MUTUAL FIRE INSURANCE  
COMPANY

Legal Reserve – Non-assessable

Serving Since 1898

Home Office – Chatfield

*Congratulations  
to  
Class of '58*

Your Frozen Food Center

DREWES LOCKER

*Congratulations  
to  
Class of '58*

CHATFIELD LUMBER COMPANY

Compliments  
of

**BOETZER'S**

**BOATEL**

Gull Lake

Nisswa, Minn.

**F**urniture  
uneral Service  
Chatfield, Minn.

NORTHWEST UNDERWRITERS, INC.

Thurber – Lake – Strange

Chatfield

Minnesota

MITCHELL'S

*Best Wishes  
for the  
Class of '58*

Gordon Mitchell

Owner

BOB'S  
FEED AND COAL

*Compliments  
of*  
CHATFIELD CO-OP CREAMERY

EGGE IMPLEMENT

Phone 38  
Chatfield Minn.

New Holland – Minneapolis-Moline

Drink more milk . . . Eat more meat  
for a healthy America and  
a strong Agriculture

*Congratulations  
Class of '58*

SISSON'S GROCERY

Where the food prices are lower everyday  
on quality foods

MILLER LIVESTOCK

Phone 687

*Best Wishes*

ISENSEE'S STANDARD SERVICE

W. G. CLES

5¢ – \$1.00

Candy and Gifts – Everyday Needs

P. H. LAIVELL

Clothing Store

Store established in early March, 1854

Member of  
Allied Clothiers



**BREKKE'S**

**Silverware — Watches — Jewelry**

For gifts you give with pride  
Let your jeweler be your guide

**Conrad E. Brekke, Jeweler**

*Congratulations  
to  
Class of 1958*

**LEO'S BAKERY**

Phone 227

**FENSKE PURE OIL SERVICE**



Phone 393

Chatfield

Minnesota

**ROOT RIVER**

**STATE BANK**

**Member**

**Federal Reserve System**

**Member**

**Federal Deposit**

**Insurance Corporation**

**1958—Our 102nd Year**

**LAWLER'S**

**Bulk Truck — Service Station**

**Tires — Batteries — Washing**

**Greasing — Gas — Oil**

Phone 150

Chatfield

**ERDMAN'S SUPER MARKET**

**Self-Serve — Cash — Carry**

**Complete Line of  
Meats, Fruits, Vegetables, and Groceries**

**We Give S & H Green Stamps**

Phone 211

## WELHAVEN MUSIC COMPANY

228 South Broadway

Rochester

Minnesota

Selmer — Besson — King

Band Instruments

Baldwin — Thomas — Pianos — Organs

## HOLLAND'S

of

Rochester

Favorite Family Food

Since 1907



### *Compliments of Rochester Concerns*

Lincoln Shoe Store

O & B Shoe Store

Cronin and Peterson

Richmond's Bootery

Julius Estes

Woolworth's

Baker's Shoe Store

Monte's Gift & Stationery

Anderson's Men's Wear

Adam's Bookstore

Massey's

Dayton's

*Best Wishes  
from*

## NORTHWESTERN BELL TELEPHONE

Elmore Olson, Manager

Chatfield

Minn.

*Best Wishes  
to  
Class of '58*

## MARIGOLD DAIRY

Rochester

Minn.

## PANTRY GROCERY

Quality at a fair price

Open daily 8:00 A.M. to 9:30 P.M.

Open Sundays and Holidays:

8:00 A.M. to 12:30 P.M.

5:00 P.M. to 8:00 P.M.

## LENZ FAMILY SHOES

"Put yourselves in our shoes"

Shoes and Repairing





**CHATFIELD DAIRY**

**Pasteurized – Homogenized**

**You can whip our cream but  
you can't beat our milk**

Phone 26-W-3

**NIEMEYER'S**

**Plumbing and Heating**

Chatfield

Minnesota

**COAST-TO-COAST STORE**

**Hardware – Housewares**

**Automotive – Electrical Supplies**

**Sporting Goods – Toys – Paints**

**ABC Washers and Dryers**

**For all your insurance needs**

**Business, Home, Auto**

**Place with Confidence**

**MARSHALL SCOTT**

**COOPERATIVE OIL CO.**

**"Pays You the Savings"**

Phone

Station 249 – Bulk Del. 168

*Congratulations  
to  
'58 Class*

**CRAMER'S DIRECT SERVICE**

**Welding Shop**

*Compliments  
of*

**INTERSTATE POWER COMPANY**

Chatfield

Minnesota

**Live better electrically**

**CHATFIELD HATCHERY**

Phone 382

Chatfield

Minn.

**Hy-line Chicks**

**Jamesway Poultry and Livestock Equipment**

# Autographs





Carol A.



Lanny S.



Frank B.



Elizabeth T.



Sharon M.



Jerry A.



Lucille B.



John B.



Sharon A.



Sharon H.





Elsie T.



Elizabeth D.



Mallory and Marlene



Kenneth N.



Peter B.



Paul H.



Joanne H.



Mary F.



Duane K.



Nadine N.



Alice P.



Sharon P.





Herbert H.



Ruth Ann R.



Kathleen S.



Beverly A.



Karleen A.



Phyllis A.



Myrna B.



Donna H.



Vivian L.



Anna Mae H.



Marjorie B.



Diane D.



Betty T.



Elizabeth W.



Norman B.

# Autographs



