

**BURR**

**OAK**

**1946**





**BURR**

**OAK**

**1946**







## Dedication



We dedicate this Burr Oak of 1946 to Miss Ann J. Gallagher of our teaching staff who through her untiring efforts, has guided us through our junior high years.



# Burr Oak Staff



*Left to right: J. Lawson, Associate Editor; P. Halloran, Editor; C. McConnell, Business Mang.*



*Top row: left to right: C. Haven, C. Tuohy, J. Mattern, C. McConnell, A. Jacobson, Miss Sawyer (advisor), J. Lawson, M. Tangen, M. Sorenson, P. Halloran. Second row: B. Glover, J. Kelley, J. Ward, E. Bothun, J. Ferguson, J. Fahlgren, C. Manahan, D. Judd, P. Lynch, F. Shimer. Bottom row: L. Battey, E. Asleson, P. Hanley, L. Kadlec, J. Olson, G. Brown, M. Grieve, G. Asleson, D. Spelhaug, K. Healy, M. Becker.*



## School Board



DR. O. W. HAUCK  
President



H. P. THURBER  
Treasurer



L. J. KIVELL  
Secretary



I. L. ERDMAN  
Director



G. F. HALLORAN  
Director



Our superintendent, Mr. C. P. Mickelson, manages the school efficiently and has a supply of ready wit on all occasions.

B. A. Macalester College  
M. A. University of Minnesota

## Administration

Principal W. A. Quenett watches the students with a keen eye and expresses well his knowledge of physics and chemistry to all of his science students.

B. Ed. Winona State Teacher's College  
M. A. University of Minnesota





# F A C U L T Y



MRS. WAYNE JOHNSON  
B. A. College of St. Teresa  
Mathematics, Physical Edu-  
cation



MARY MARGARET  
SAWYER  
B. S. College of St. Teresa  
English, Latin, Biology



NORMA WESTMAN  
B. S. Winona Sate Teacher's  
College  
English Social Science



MRS. ALLEN COLE  
B. S. Mankato State Teach-  
er's College  
Social Studies  
History



LORRAINE KEEGAN  
B. S. University of Wiscon-  
sin  
Home Economics



RACHEL SOLI  
St. Olaf College  
Economic Geography  
Social Studies  
Physical Education





CLARENCE ARSERS  
B. Mus. MacPhail School of  
Music Instrumental.



MARIAN HEINEN  
B. A. College of St. Teresa  
Commercial.



MRS. CHARLES PAVLISH  
B. S. University of Minne-  
sota  
Vocal Music, Jr. Business  
English



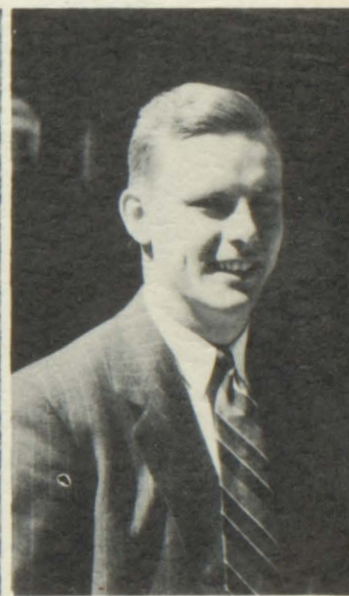
CLIFFORD DRILL  
B. E. Duluth State Teacher's  
College  
Junior High Principal  
Science



WAYNE STEPHENS  
B. E. Moorhead State  
Teacher's College  
Industrial Arts  
Coach-Basketball



ANN J. GALLAGHER  
St. Cloud Teacher's College  
English



HARLAN OLSON  
B. A. Luther College  
Physical Education  
Mathematics  
Coach- Football,  
Baseball



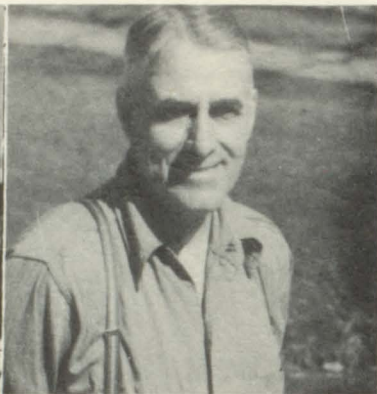
# Grade Faculty



*Top row: left to right: R. Laumb, G. Bigalk, Mrs. Olson. Bottom row: Flemming, Mrs. Quenett, M. Morrisroe, M. York.*



Mrs. James Wilson  
Assistant Librarian



Mr. Warren Mead  
Custodian



Mr. William Hervey  
Engineer

Mrs. Austin  
Mankato State Teacher's  
College  
Social Studies Physical  
Education



Mrs. Virginia Kremer  
School Secretary



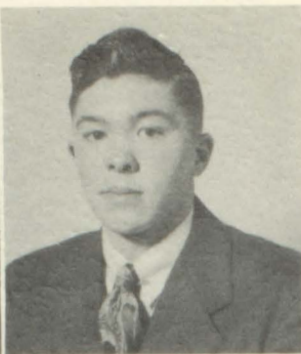




# SENIORS



DORIS ALLEN  
Jr. Girls' Chorus 1; Sr. Girls' Chorus 2-3-4; Mixed Chorus 2-3; One-Act Plays 3.



WESLEY ALLEN "Porky"  
School Police 3-4; Football 3-4; Burr Oak Staff 4; Boys' Chorus 4.



ELAINE ASLESON  
Jr. Girls' Chorus 1; Sr. Girls' Chorus 2; Mixed Chorus 2; Class Secretary 3; Class Play 3-4; Thespian Society 3-4; One-Act Plays 4. Burr Oak Staff 3-4.



PHYLLIS BACON  
Burr Oak Staff 3-4.



MARJORIE BAKER  
"Margie"  
Jr. Girls' Chorus 1; Class Play 4.



MAVIS BALCOME  
"Maisie"  
Jr. Girls' Chorus 1; Gopher-Hi-Life Staff 4.



LAVONNE BATTEY  
"Bonnie"  
Jr. Girls' Chorus 1; Band 1-2-3-4; Class Play 3; Student Director 4; Clarinet Trio 3; Woodwind 4; Prom Refreshments Chairman 3; Kopy Kats 4; Homecoming Attendant 4; Burr Oak Staff 4; Thespian Society 3-4; Class Treasurer 4. One-Act Plays 4; Nat'l Honor Society 4;



GERALD BICKNESE  
"Jerry"  
Burr Oak Staff 4.



ELROY BOTHUN  
"Booty"  
Football 1-3-4; One-Act Plays 3; Burr Oak Staff 4; Basketball 1-4; Lettermen's Club 4.



ROBERTA BURK  
"BobbieLou"



JOHN FAHLGREN  
"Buddy"  
Nat'l Honor Society 3-4; Burr Oak Staff 3-4; Nat'l Ath. Sch. Soc. 3-4; Mixed Chorus 2-3; Boys' Chorus 4; Band 1-2-3-4; Football Manager 3-4; Basketball 1-2-3-4; Clarinet Trio 3; Mixed Octet 2, 4; Gopher-Hi-Life 4; Kopy Kats 4; Lettermen's Club 3-4.



JOHN FERGUSON  
"Fergy"  
Burr Oak Staff 3-4; Basketball 1-2-3-4; Football 1-2-3-4; Baseball 1-2; Lettermen's Club 3-4; Mixed Chorus 2-3; Boys' Chorus 4; One-Act Plays 4.





PAULINE FINLEY  
"Johonic"



ROBERT GLOVER  
"Bob"  
Basketball 1-2-3-4; Football 1-2-3-4; Capt. 4; Baseball 1-2-3-4; School Police 3-4; Capt. 4; Mixed Chorus 3; Boys' Chorus 4; One-Act Plays 4; Class Play 4; Lettermen's Club 3-4; Burr Oak Staff 4.



KEITH GORDON "Buck"  
Thespian Society 3-4; Class Play 3; Burr Oak Staff 3-4; Football 1-2-3-4; Basketball 1-2-3; Baseball 1-2.



MILDRED GRIEVE  
"Milly"  
Class Treasurer 3; Secretary 4; One-Act Plays 3-4; Class Play 3-4; Thespian Society 3-4; Thespian Secretary 4; Burr Oak Staff 3-4; Homecoming Attendant 4; Nat'l Honor Society 4.



PAT HALLORAN  
Band 1-2-3-4; Thespian Society 2-3-4; Thespian Secretary 3; Pres. 4; Basketball 3-4; Football 3-4; Burr Oak Staff 3; Editor 4; Class Pres. 3; Vice-Pres. 2; Class Play 3-4; Nat'l Honor Society 4; Baseball Manager 2-3-4; Gopher Hi-Life 3-4; Nat'l Ath. Sch. Soc. 3-4; One-Act Plays 3-4; Kopy Kats 4.



PAULINE HANLEY  
"Queenie"  
Thespian Society 3-4; Class Play 3-4; One-Act Plays 3-4; Cheerleaders 2-3-4; Jr. Girls' Chorus 1; Sr. Girls' Chorus 2; Burr Oak Staff 3-4.



STANLEY HANSON  
"Stan"  
Football 3; Declam 2.



KATHLEEN HEALY  
"Kate"  
Burr Oak Staff 3-4; Gopher Hi-Life 3-4; Mixed Chorus 2-3; Sr. Girls' Chorus 2-3; Jr. Girls' Chorus 1; Class Play 4.



PEARL HOFF  
Jr. Girls' Chorus 1; Sr. Girls' Chorus 2; Mixed Chorus 2.



EDNA HOLGER  
Jr. Girls' Chorus 1; Sr. Girls' Chorus 2; Mixed Chorus 2.



GLADYS HORSTMANN  
"Oij"



ARLENE JACOBSON  
"Jake"  
Jr. Girls' Chorus 1; Burr Oak Staff 4; One-Act Plays 3; Student Director 4; Class Play 3-4; Thespian Society 3-4; Mixed Chorus 2; Sr. Girls' Chorus 2.





BETTY LOU JORGENSEN  
"Jorgie"  
Jr. Girls' Chorus 1; Gopher-Hi-Life 4; Class Play 4.



DON JUDD "Zack"  
Baseball 1-2-3-4; Football 2-3-4; Basketball 1-2-3-4; Capt. 4; Nat'l Ath. Sch. Soc. 2-3-4; Lettermen's Club 3-4; Boys Chorus 4; Prom General Chairman 3; Class Play 3-4; Class Vice-Pres. 3; One-Act Plays 3-4; Class Pres. 2; Burr Oak Staff 3-4; Thespian Society 3-4; Thespian Vice-Pres. 4.



LOUISE KADLEC  
National Honor Society 3-4; Thespian Society 4; Gopher-Hi-Life Staff 1-3-4; Mixed Chorus 2-3; Senior Girls' Chorus 2-3-4; Junior Girls' Chorus 1; Declamation 2-3-4; One-Act Plays 4; Class Play 4; Burr Oak Staff 4; Prom Program Chairman 3.



JOE KELLEY "Big Buddy"  
Football 2-4; Basketball 4; Baseball 3-4; Capt. 4; School Police 3-4; One-Act Plays 3-4; Declam 2-4; Burr Oak Staff 4; Class Play 4.



JOANNE LAWSON "Jo"  
Gopher-Hi-Life Staff 3-4; Declamation 3; Burr Oak Staff 3-4; Associate Editor 4.



CARLTON LEWIS "Cage"  
National Honor Society 4; Burr Oak Staff 4; Basketball 1-2-3-4; Football 1-2-3-4; Lettermen's Club 3-4; Nat'l Ath. Sch. Soc. 4.



PAT LYNCH "Denny"  
Football 1-2-3-4; Basketball 1-2-3-4; Baseball 1; Lettermen's Club 3-4; Burr Oak Staff 4; Boys' Chorus 4.



CONSTANCE McCONNELL "Connie"  
Jr. Girls' Chorus 1; Mixed Chorus 2-3; Sr. Girls' Chorus 2-3-4; Mixed Octet 2; Sextet 3; Triple Trio 2; Class Secretary Treasurer 3; Burr Oak Staff 3-4; Business Manager 4; One-Act Plays 4; Thespian Society 3-4; Thespian Treasurer 4; Student Director Class Play 3.



CHARLES MANAHAN  
"Chuck"  
Burr Oak Staff 3-4; Nat'l Ath. Sch. Soc. 3-4; Football 3-4; Basketball 3-4; Capt. 4; Baseball 3-4; Student Assembly Board 3; Prom Decorations Chairman 3; Boys' Chorus 4; One-Act Plays 4; Gopher-Hi-Life Staff 4; Class Play 4.



MARY ELLEN MANAHAN  
Jr. Girls' Chorus 1; Sr. Girls' Chorus 2-3; Mixed Chorus 2.



GORDON OVERLAND  
"Gordie"  
Thespian Society 3-4; Class Play 3-4; One-Act Plays 3-4; Mixed Chorus 4; Boys' Chorus 4; Burr Oak Staff 4.



MARJORIE SORENSON  
"Nixie"  
Jr. Girls' Chorus 1; Sr. Girls' Chorus 2-3-4; Mixed Chorus 2-3; Class Play 4; Class Secretary 4; Burr Oak Staff 4.





MARIAN TANGEN  
Burr Oak Staff 4.



EVA TUCKER "Bliss"  
Burr Oak Staff 3; Gopher-Hi-Life 1-2-3-4; Assistant Editor 3; Editor 4; Mixed Chorus 3.



CHARLOTTE TUOHY  
"Chotse"  
Burr Oak Staff 3-4; Declam 3; Sr. Girls' Chorus 2-3; Mixed Chorus 2-3; Gopher-Hi-Life 1-2-4; Jr. High Editor 1; One-Act Plays 4; Jr. Girls' Chorus 1; Class Play 3-4.



JAMES WARD "Jim"  
School Police 3-4; Declam 2-4; Boys' Chorus 4; Burr Oak Staff 4.



MARY ELLEN YETTER  
Sr. Girls' Chorus 3; Gopher-Hi-Life 4.



VELMA ZIEGENHAGEN

No Picture

CAROL PRUITT  
Mixed Octet 4; Boys' Chorus 4.

## Senior Class Officers

Left to right: M. Sorenson, Secretary; L. Battey, Treasurer; Gordon, Vice-President; J. Ferguson, President.







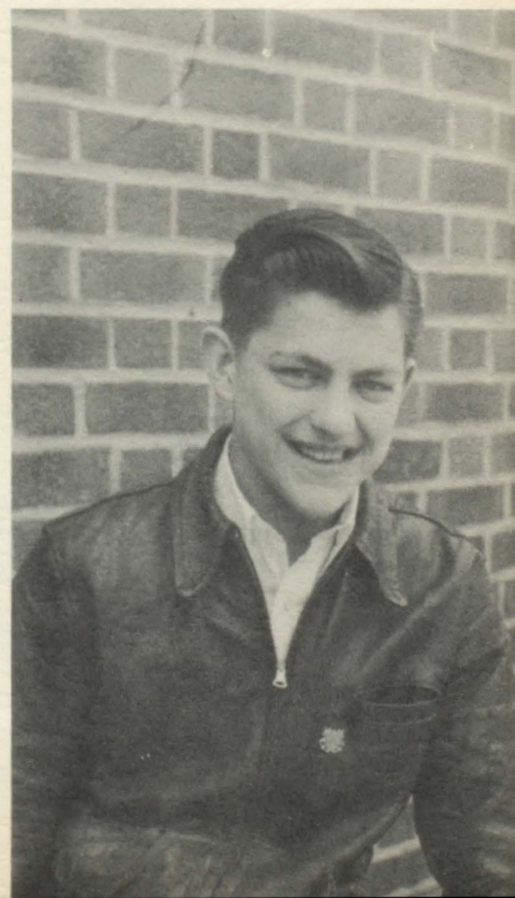
## Junior Class

*Top row:* Mrs. Cole, W. Reese, S. Banker, J. Manahan, L. Peterson, G. Bandel, W. Amundson, F. Shimer, L. Balcome, G. Crowson. *Second row:* R. Holets, B. David, C. Haven, J. Sorenson, B. Pease, R. Bailey, V. Sanford, T. Manahan, M. Baker, L. Ferguson. *Third row:* B. Brogan, E. Mitchell, R. Trogstad, M. Bradt, G. Haas, G. Brown, J. Keefe, A. Sharpe, J. King. *Bottom row:* M. Baker, J. Herrick, G. Asleson, J. Olson, M. Wehrenberg, M. Walsh, Y. Bicknec, B. Follensbec, L. Cunningham, E. Kester.



Junior Class President  
JEAN OLSON

Sophomore Class President  
KENNETH ARSERS







## 10th Grade

*Bottom row:* left to right: L. Gardner, E. Dunn, J. Peterson, J. Langevin, V. Hemker, V. Kester, M. D. Wurtzler, D. Spelhaug, V. Bernard, M. Barth, G. Banker, C. Lynch. *Second row:* M. McConnell, C. Eide, T. Manahan, E. Warber, S. Oliver, M. Kadlec, L. David, J. Schroeder, J. Marum, H. Thompson, J. Mattern, J. King. *Third row:* B. Bolles, A. Erickson, D. Bothun, B. Kester, S. Cocker, J. Rogers, R. Finseth, B. Oldenberg, P. Busher, L. Crowson, D. Bailey, R. Trosin. *Top row:* M. Baker, T. McKeown, D. Engle, P. Garry, D. Hoiseth, R. Marshall, K. Arsers, L. Ferguson, M. Mulvihill, M. Bernard, Miss Sawyer (adviser).



## 9th Grade

*Bottom row:* left to right: D. Jervis, D. Herrick, D. Tangen, M. Connelly, M. Knutsen, M. Harrington, G. Stokes, M. Evans, J. Follensbee, L. Balcome, L. Manahan, V. Eide, B. Overland, H. Halloran, K. Flynn. *Second row:* I. Dempsey, I. Cocker, L. Tucker, B. Trogstad, R. Kadlec, A. Greenlee, M. Balcome, H. Baker, N. Rose, H. Flathers, G. Worden, G. Kendel, B. Coutier, H. Anderson, T. Olson, N. Gordon. *Third row:* W. Erickson, V. Healy, D. Brown, H. Anderson, A. Sabatke, C. Holger, I. Asleson, J. Engle, J. Trauffer, R. Finn, W. Ryther, E. Amundson, F. Clark, B. Gaffron, R. Holets, P. Delaney, G. Ferguson. *Top row:* Mr. Drill, M. McConnell, S. Finstuen, M. Jefferis, G. Grieve, R. Healy, B. Lynch, B. McRae, A. Sharpe, P. Redalen, G. Harwood, K. Rogers, L. Manahan, C. Manahan, J. Jackson, H. Holets, E. Mitchell.





## 8th Grade

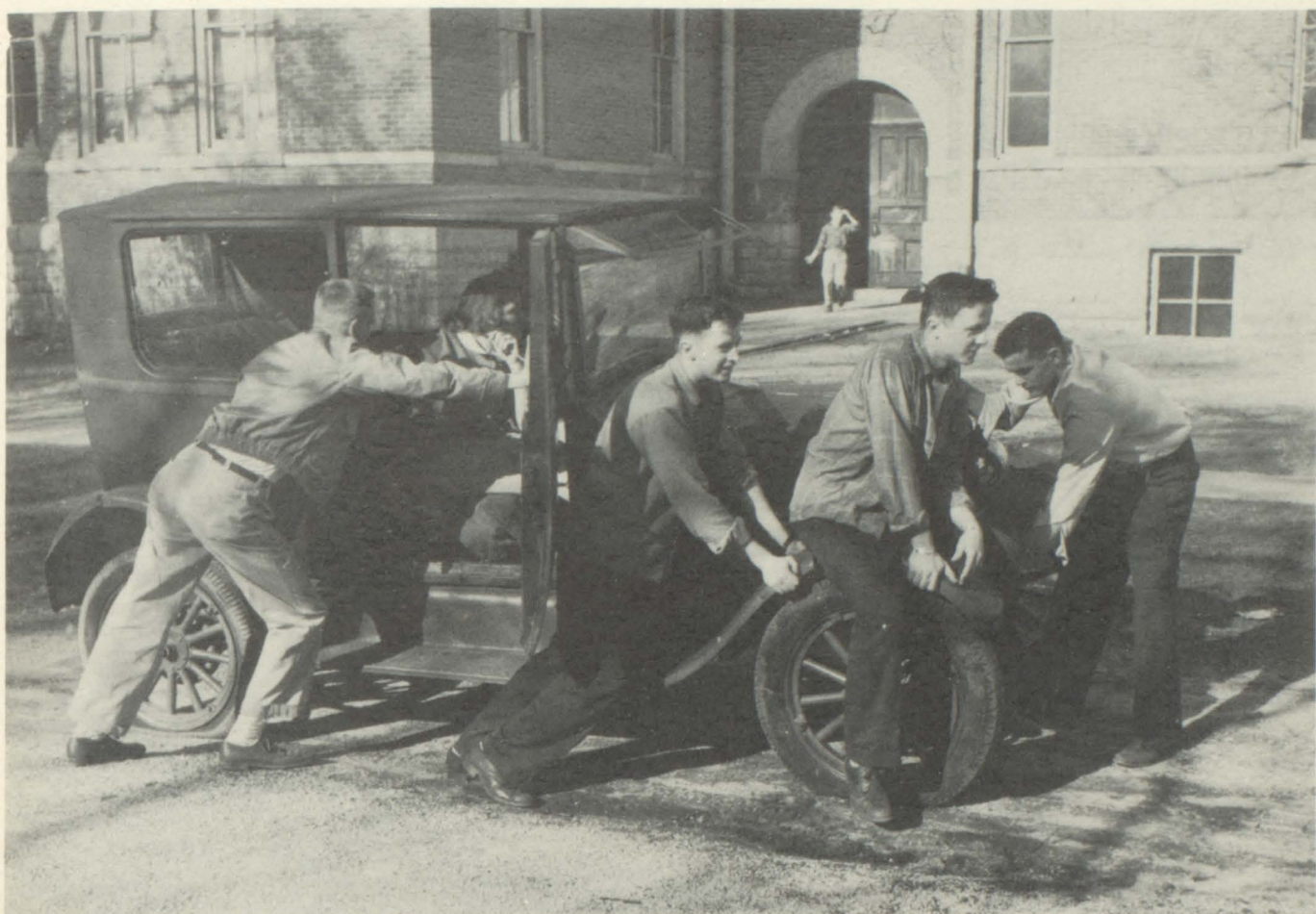
*Bottom row:* Left to Right: M. Lynch, P. Petersen, L. Griffin, M. Lynch, V. Fenske, L. Narveson, D. Sabatke, C. Goldsmith, G. Pease, J. Banker. *Second row:* B. Elton, D. Haven, R. Grubb, M. Yust, M. Peters, T. Waller, S. Luedke, K. Coutier, B. Hesby, C. Manahan, Miss Gallagher. *Third row:* Arsers, D. Childs, D. Jacobson, B. Dunn, S. Barth, H. Anderson, R. Lundt, B. Follensbee, L. Baker. *Top row:* D. Crowson, L. Holtegard, M. Herrick, L. Mundell, J. Larson, J. Wheeler, D. McBroom, L. Garry, L. Isensee.



## 7th Grade

*Bottom Row:* B. Skaug, S. Caw, M. McConnell, E. Barth, L. Lynch, E. Manahan, M. Eide, J. Wheeler, M. Anderson, D. Glynn. *Second row:* A. Meade, E. Holets, M. Fix, J. Follensbee, B. Rongley, B. Narvenson, C. Cunningham, S. Bothun, D. Baiers. *Third row:* W. Scott, D. Johnson, H. Lewis, R. Mohawk, M. Monette, D. Kohlmeyer, D. Leonard, P. Lawler, L. Bradt, J. Baker. *Top row:* Miss Soli, B. Busher, D. Olson, J. Larson, T. Hanson, J. Sample, G. Coe, B. Sutherland, E. Worden.





## ACTIVITIES



# SPEECH



Chatfield High School was represented at the sub-district speech contest at Harmony on March 11, and at the district contest at Rushford, March 25. The regional was held in Chatfield on April 1.

*Top row:* left to right: G. Haas, T. Manahan, B. Brogan, J. Ward, G. Bandel, J. Kelley, J. Sorenson, Miss Sawyer, (advisor). *Second row:* Miss Westman, (advisor), M. Baker, L. Ferguson, J. Rogers, G. Asleson, M. Becker, L. Kadlec, G. Crowson. *Bottom row:* Mrs. Cole, (advisor), A. Erickson, J. King, L. Gardner, M. McConnell, M. Wurtzler, J. Herrick, G. Brown.

Not pictured: Mickelson, (advisors)



*Left to right:* J. Manahan, B. Glover, W. Allen, J. Ward, J. Kelley, G. Bandel, L. Balcome.



# Gopher Hi-Life Staff

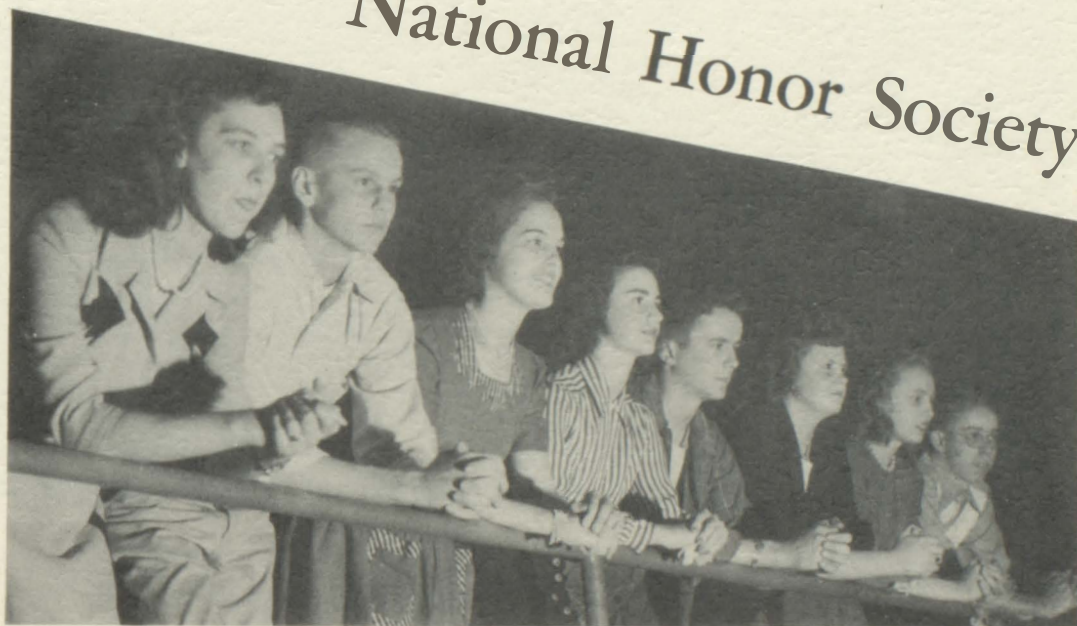


*Top row:* Left to right: G. Ferguson, J. Lawson, J. Peterson, J. Mattern, K. Healy, M. Balcome, Miss Sawyer (advisor), J. Fahlgren, P. Halloran, C. Manahan, M. Becker, L. Isensee. *Second row:* T. Manahan, C. Tuohy, B. Hesby, D. Tangen, H. Halloran, M. McConnell, B. McRae, B. Lynch, N. Rose, L. Tucker, B. Follensbee. *First row:* L. Ferguson, V. Healy, E. Tucker, M. Yetter, L. Griffen, B. Jorgenson, M. McConnell, E. Manahan, B. Skaug, N. Gordon, L. David, L. Kadlec.

The Gopher Hi-Life is published by and for the students and tries to give a complete picture of what is happening in school. Anyone who is interested may join for membership is voluntary. Each year the 6 members who hold the longest record are sent to Minneapolis. The trip is financed by the sale of Gopher tags from homecoming.

Membership in the National Honor Society, a nationwide organization, is one of the highest achievements offered in high school. To qualify, candidates must be in the upper one-third of the class in scholarship, and must rank high in character, leadership, and service. Each year several seniors are elected to the society by the faculty, and the highest ranking girl and boy in the junior class are automatically given admittance. Members were awarded a pin and a scroll for their achievements.

## National Honor Society



left to right: L. Battey, J. Fahlgren, L. Kadlec, M. Grieve, P. Halloran, G. Asleson, J. Olson, C. Lewis.





## Thespians

The Thespian Dramatic Society, troop 550, is composed of students who have earned ten points or more through participation in plays. The following are members:

*Top row:* L. Peterson, K. Gordon, J. Kelley, G. Bandel, G. Overland, D. Judd (Vice President), P. Halloran (President). *Second row:* Miss Westman (advisor), J. Sorenson, C. McConnell (Secretary), A. Jacobson, E. Asleson, P. Hanley, L. Battey (Treasurer). *Bottom row:* J. Keefe, G. Haas, L. Ferguson, G. Asleson, M. Grieve, L. Kadlec, J. Herrick.



## One Act Play

Three one-act plays, "Bobby Sox", "Hugo in a Hurry", and "I'm a Fool" were directed by Miss Westman and presented in October by the following cast:

*Top row:* left to right; D. Judd, L. Peterson, B. Glover, G. Bandel, G. Overland, P. Halloran. *Second row:* C. Tuohy, J. Ferguson, C. Manahan, L. Battey, P. Hanley, J. Kelley, J. Sorenson, Miss Westman (advisor). *Bottom row:* C. McConnell, J. Herrick, L. Kadlec, P. McConnell, M. Grieve, J. Peterson, E. Asleson.

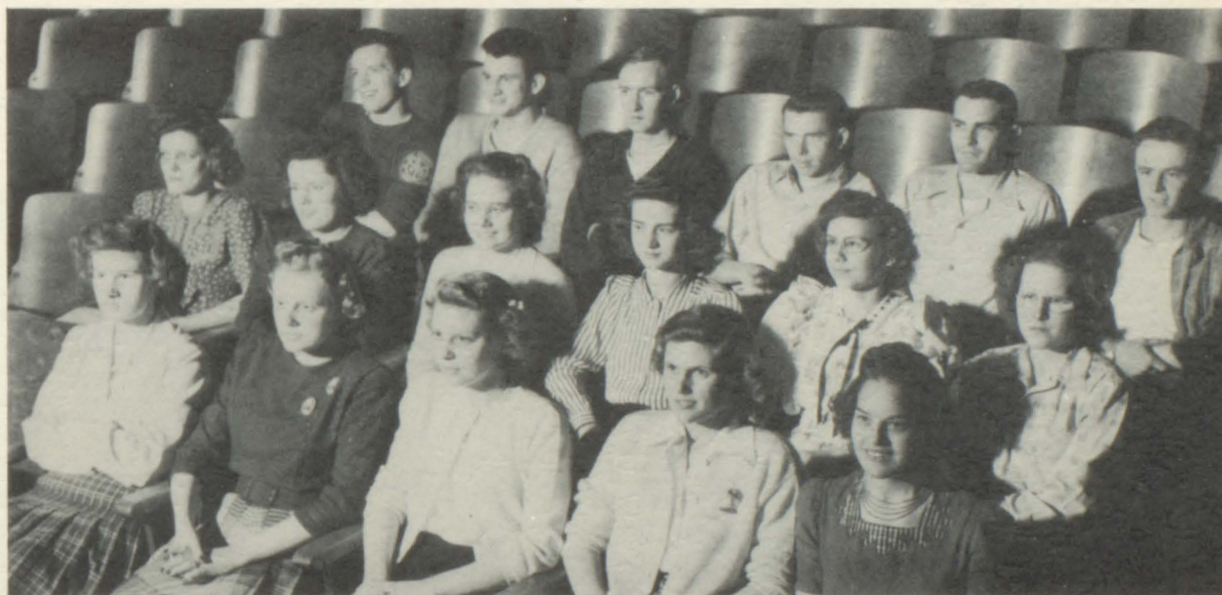


## Junior Class Play



The junior class presented a three act play, "A Little Honey", on December 5, under the direction of Miss Westman. The cast included the following:  
*Back row:* left to right: J. Olson, G. Haas, G. Brown, G. Asleson, J. Herrick, L. Ferguson, J. Keefe, Miss Westman (advisor), M. Bradt. *Front row:* J. Sorenson, L. Peterson, G. Bandel.

## Senior Class Play



Top Row left to right: C. Manahan, B. Glover, J. Kelley, G. Overland, D. Judd, P. Halloran.  
 Second Row: N. Westman (director) K. Healey, M. Baker, M. Grieve, M. Sorenson, B. Jorgenson.  
 First Row: C. Tuohy, E. Asleson, A. Jacobson, P. Hanley, L. Kadlec.

The senior class presented a three act comedy, "Strictly Formal," on May 10, under the direction of Miss Norma Westman, assisted by the student director, Lavonne Battey.



## Senior Girls Chorus



*Fourth row:* left to right: L. David, J. Rogers, M. Becker, D. Bailey, M. Kadlec, R. Finseth, J. Shroeder, M. Baker. *Third row:* D. Bothun, J. Olson, G. Asleson, B. Oldenberg, C. McConnell, S. Cocker, M. Sorenson, D. Allen, J. King. *Second row:* G. Brown, D. Spelhaug, J. Mattern, G. Haas, L. Ferguson, J. Petersen, J. Langevin, H. Thompson, E. Warber. *First row:* M. Wurtzler, A. Erickson, E. Dunn, M. Wehrenberg, R. Bailey, J. Herrick, L. Kadlec, L. Gardner, M. McConnell.



DOROTHY PAVLISH  
Director



## Junior Girls Chorus

*Fourth row:* left to right: G. Haas, I. Asleson, H. Anderson, A. Greenley, B. Lynch, B. Trogstad, K. Flynn, T. Olson, V. Healy. *Third row:* I. Dempsey, A. Sabatke, I. Cocker, M. McConnell, V. Eide, G. Stokes, C. Holger, D. Jarvis, G. Warden. *Second row:* E. Barth, M. McConnell, B. Overland, E. Barth, V. Eide, M. E. Fix, B. Skaug, A. Mead, D. Baier. *First row:* E. Holets, B. Balcome, S. Finstuen, R. Connelly, L. Lynch, S. Bothun, J. Follensbee, B. Narvenson.



## Mixed Octet



*Top row:* left to right: C. Pruitt, L. Peterson, J. Mattern, J. Fahlgren, J. Sorenson. *Bottom row:* M. Wurtzler, G. Haas, E. Dunn, J. Olson.

## Triple Trio



*Second row:* left to right: G. Brown, H. Thompson, S. Finstuen, J. Mattern, G. Haas. *First row:* D. Spelhaug, M. Wurtzler, E. Dunn, J. Olson.



# Senior Boys Chorus



*Top row:* J. Sorenson, K. Arsers, R. Engle, R. Marshall, L. Peterson, G. Bandel, J. Manahan, T. McKeown..  
*Second row:* F. Shimer, R. Trosin, C. Pruitt, P. Garry, C. Manahan, J. Ferguson, G. Overland, J. Fahlgren.  
*Bottom row:* E. Bothun, P. Lynch, W. Allen, D. Hoiseth, R. Holets, J. Kelley, J. Ward, D. Judd.

RALPH THORSON  
 Director



# Woodwind



*Left to right:* H. Thompson, L. Battey, D. Tangen, K. Arsers, J. Mattern.



# Band



*Third row:* L. Mundell, M. Jeffries, J. Sorenson, F. Shimer, J. Wheeler, M. Evans, R. Healy, K. Arsers, J. Holets, R. Altes. *Second row:* B. Bolles, L. Baker, G. Harwood, F. Clark, J. Trauffer, S. Arsers, J. Olson, G. Asleson, P. Halloran, P. Smith, S. Caw, Mr. Arsers (Director). *First row:* M. McConnell, H. Halloran, S. Luedke, E. Dunn, M. Baker, J. Wheeler, V. Bernard, M. Barth, B. McRae, L. Battey, J. Fahlgren, J. Mattern, D. Spelhaug, H. Thompson, D. Tangen, D. Haven, N. Rose, B. Elton.

CLARENCE ARSERS  
Director

Chatfield High School is proud of its past record in the vocal and instrumental groups. During the past thirteen years the music department has won thirteen first places, two being Division I and Division II in National Competition.

This year the band was composed of forty-five members with the different instruments well distributed. On February 15, it participated in the annual winter music concert and from then on rehearsed for the District I music contest which was held on April 27.

In addition to the concert band a B band of thirty-five pieces is used as a training medium for potential members of the A band.

The school board retains Mr. Arsers on a twelve month basis, so, the instrumental department is continued all through the year.







## Kopy Kats

*Back row:* P. Halloran, J. Wheeler, B. Healy, J. Sorenson, G. Asleson, J. Olson, L. Battey, J. Fahlgren, K. Arsers, F. Clark, S. Arsers.

The Kopy Kats is the school orchestra made up entirely of members of the high school band. They have played at some of the school dances and the basketball games. Although they didn't get organized until late in the year, they played at several social gatherings during the year.



## Brass Quartet

F. Shimer, K. Arsers, J. Trautler, S. Arsers.





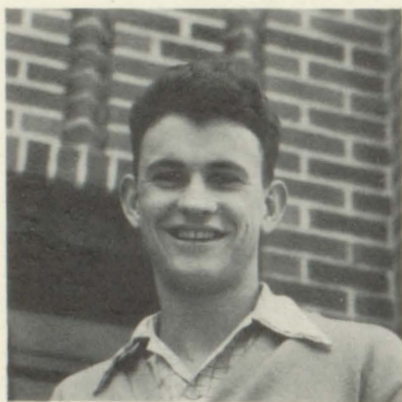
S  
P  
O  
R  
T  
S





# FOOTBALL CHAMPIONS

1945

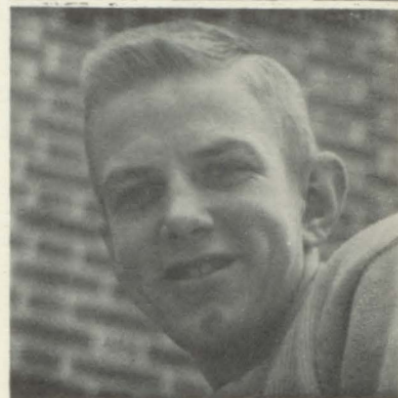


ROBERT GLOVER  
Back  
23



CHUCK MANAHAN  
BACK  
33

DON JUDD  
BACK  
20



PAT HALLORAN  
GUARD  
25

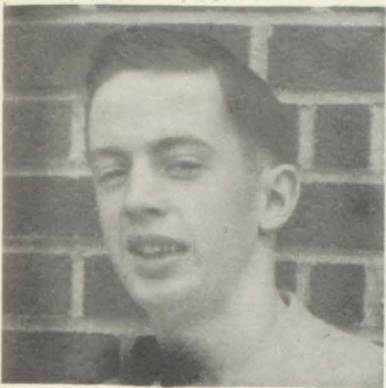
DON HOISETH  
CENTER  
21

JOHN FERGUSON  
BACK  
26





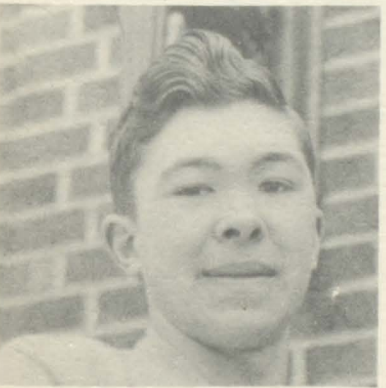
Wally Amundson  
End  
31



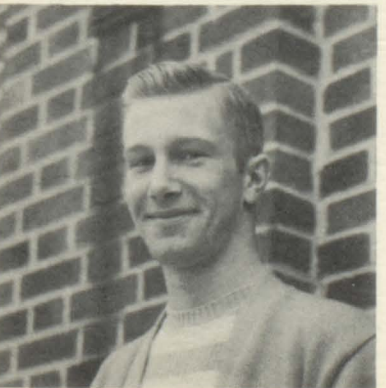
Pat Lynch  
Tackle  
34



Joe Kelley  
Guard  
30



Wesley Allen  
Tackle  
32



Keith Gordon  
End  
22

UNDEFEATED

UNTIED

UNSCORED UPON

UNDEFEATED	UNTIED	UNSCORED UPON	Opponents
Chatfield			
40.....	Harmony.....	0	
24.....	Lanesboro.....	0	
45.....	Spring Grove.....	0	
38.....	Mabel.....	0	
40.....	Preston.....	0	
18.....	Rushford.....	0	
43.....	Stewartville.....	0	
6.....	St. Charles.....	0	

Not pictured  
Paul Garry  
Guard  
35

Benton Wimmer  
Tackle  
24



# FOOTBALL



*Top row left to right:* M. Bernard, R. Healy, F. Clark, S. Banker, G. Harwood, L. Ferguson, G. Grieve, C. Lewis, E. Bothun.  
*Second row:* J. Fahlgren (Manager) M. Mulville, P. Halloran, P. Garry, D. Hoiseth, B. Wimmer, P. Lynch, W. Allen, J. Kelley.  
*First row:* W. Stephens (Assistant Coach) W. Amundson, D. Judd, C. Manahan, B. Glover, J. Ferguson, K. Gordon, H. Olson (Coach).

The football team of '45 was the hardest hitting best balanced team to be had at Chatfield High, led by Co-captains Keith Gordon and Bob Glover, this team ran up an admirable record that will be remembered for sometime.

While scoring 254 points, it stopped every opponent from crossing their goal line. Four Gophers made the All-Conference First Team. Don Judd—Back, Bob Glover—Back, Keith Gordon—End, Benton Wimmer—Tackle, while Chuck Manahan—Back, and Joe Kelley—Guard, made the Second Team.

Glover, the States individual high scorer (165) was awarded a well deserved position on the All-State Team as a back.

Eleven Seniors are leaving the team this year, with nine lettermen remaining to defend the Championships.

The season was started strong by a easy 40-victory over Harmony which showed the boys that they had a team that was to be reckoned with in the remaining games of the season. Lanesboro, a better team, was polished off the following week by a score of 24 - 0. Although it was raining and mud covered the field, the gophers continued to roll and added Spring Grove to their list of victims' by a score of 45 - 0. The Gophers next ran up against Mabel which they set down in defeat by a score of 38 - 0. Mabel was the one school that really came close to our goal line, but that same stubbornness that stopped all their opponents, showed itself again and Chatfield came through.

Revenge for other years was what was in the hearts of the boys as they next trampled Preston on their field by a margin of 40 - 0.

The toughest Conference game of the season was next, but with so much at stake, the boys really put out to stop Rushford for the Championship by a score of 18-0. A record crowd witnessed this game.

In preparation for the St. Charles game, the gophers rolled over Stewartville by a score of 43 - 0. With Chatfield holding the Championship of District 1 and St. Charles the Whitewater League Championship, the next game meant the Championship of Southeastern Minnesota. With snow in the air and the field frozen, the team journeyed to St. Charles for the final game of an outstanding season. With the game seesawing back and forth and no score for the first half, the gophers came back to score in the third period; Chatfield was unable to score again, but prevented St. Charles from scoring, and so won by a small margin of 6 - 0. With eleven seniors finishing their high school football career, this was a brilliant conclusion to an outstanding season.

Much credit for this successful season goes to Coach Olson whose expert coaching led the team to its victorious standing.

**HARLAN OLSON**  
Coach





# Basketball A and B



Top row: left to right: K. Rogers, L. Garry, G. Harwood, J. Larson, B. Healy, E. Amundson, F. Clark, L. Isensee, Second row: P. Halloran, P. Garry, W. Amundson, P. Lynch, C. Lewis, F. Shimer, E. Bothun, J. Kelley, Bottom row: R. Glover, D. Hoiseth, C. Manahan, Mr. Stephens (Coach), D. Judd, J. Ferguson, J. Fahlgren.

## Seasons Record:

Chatfield	Opponents
38	Eyota 20
48	Dover 45
25	Wykoff 31
29	Rushford 36
33	Lanesboro 24
46	Harmony 12
46	Houston 20
61	Preston 24
41	Rushford 29
33	Mabel 28
36	Wykoff 28
50	Houston 18
50	Preston 16
59	Spring Valley 13
51	Lanesboro 22
56	Harmony 15
29	Caledonia 27
49	Peterson 31
50	Mabel 32



# BASKETBALL



*First row:* left to right: R. Glover, D. Hoiseth, C. Manahan, D. Judd, J. Ferguson, J. Falhgren. *Second row:* Supt. C. P. Mickelson, P. Garry, W. Amundson, P. Lynch, C. Lewis, F. Shimer, Mr. Stephens (Coach).

The Chatfield Basketball team finished its season with the best record in the history of C.H.S., winning 17 of 19 games. They finished the District 1 Conference games in first place, winning 14 of 16 games for a percentage of 43 to the opponents' 25. Led by Co-captains Chuck Manahan and Don Judd they gained second place in the District Tournament beating Rushford and Caledonia before falling to Mabel in the Championship game, 35 to 33. Chuck Manahan led the scoring with 217 points.

Don Judd and Chuck Manahan were elected guard and forward respectively on the All-Conference Team. Don Hoiseth was placed on the second team.

The "B" Team was victorious seventeen times in nineteen starts losing only to Wykoff and Rushford B's, by very narrow margins.



WAYNE STEPHENS  
Coach



## Cheerleaders



*Left to right: G. Brown, P. Hanley, R. Holets, M. McConnell.*

## Homecoming



## Queen

Doris Spelhaug



# National Athletic Scholarship Society



*Top row:* left to right: C. Lewis, D. Judd, F. Shimer. *Bottom row:* C. Manahan, P. Halloran, J. Fahlgren.

Members of this organization must earn a letter in athletics and obtain high scholastic achievements.

## Lettermen



*First row:* left to right: M. Mulvihill, P. Halloran, D. Hoiseth, R. Glover, K. Gordon, D. Judd, J. Kelley. *Second row:* Mr. Stephens (advisor), W. Allen, L. Ferguson, E. Bothun, C. Lewis, P. Lynch, Mr. Olson (advisor). *Top row:* W. Amundson, F. Shimer, J. Fahlgren, J. Ferguson, P. Garry, C. Manahan.











For Better Foods  
**WIEDENHEFTS**  
SUPER FOOD STORE

Phone 181

Chatfield

## **CAPITOL THEATRE**

**ALL THE PRODUCTS**

Shown from Studios

**M-G-M PARAMOUNT**

**Warner Bros.**

**20th Century Fox**

**R.K.O. and United Artists**

## **GAMBLE STORE**

Dealer, Otto Altes

Hardware and Auto Supplies

Paints, Varnishes, Wallpaper and Insulation

Radios and Refrigerators

Compliments of

**MISS ANNA MANAHAN**

POSTMASTER

CHATFIELD, MINNESOTA

## **Chatfield Variety Store**

Headquarters for

**SCHOOL SUPPLIES**

**HOUSEHOLD SUPPLIES**

and **CANDIES**

**N. O. FAHLGREN**

**—Shoes—**

For Every Member of the Family

The Best Place for Shoe Repairing

## **Chatfield Cooperative**

**Creamery**

Manufacturers and Shippers of

**FANCY BUTTER**

**BRICK AND BULK**

**MEALS**

**LUNCHES**

**SILVER GRILL CAFE**

**FOUNTAIN SERVICE**

**NO BEER**

Mr. and Mrs. Geo. H. Potter

**MARTIN'S**

**Standard Service**

**WASHING - GREASING**

**TIRES - BATTERIES**

**AUTO NECESSITIES**

**CHATFIELD BEAUTY**

**SHOP**

**SPECIALIZING IN PERMANENTS**

Manda Vinje, Prop.

Phone 197

**THE CHATFIELD NEWS**

**YOUR HOME TOWN NEWSPAPER**

Merlin Matzke, Publisher

"90 Years of Service to Chatfield"



MEMBER FEDERAL RESERVE SYSTEM



MEMBER FEDERAL DEPOSIT  
INSURANCE CORPORATION

## OUR OWN HARDWARE

HARDWARE AND SUPPLIES

Sporting Goods  
Fishing Tackle, etc.

COMPLIMENTS OF

**Northwest  
Underwriter's, Inc.**



Security Building—Chatfield, Minnesota

Preferred Rates for Preferred Risks

*Security Mutual*  
FIRE INSURANCE CO.

Home Office: Chatfield, Minn.

A Legal Reserve Company

"SERVING SINCE 1898"

*Annual Savings  
to Policyholders*

## INTERSTATE POWER SYSTEM

For Better Light  
Better Sight

—AT YOUR SERVICE—

## HOTEL CHATFIELD

THE MINNESOTA ROOM

for

Better Food—

Best Beverages



### **Chatfield Cleaners**

Wear Clean Clothes  
and  
You're Well Dressed

Phone ..... 130

### **Pantry Grocery**

Groceries, Fruits and Meats  
Open Evenings and Sundays

Phone 241

Mr. and Mrs. H. W. Siegel

### **Coast-to-Coast Store**

Auto Supplies -- Radios  
Paints -- Hardware  
Sporting Goods

R. M. Finstuen, Owner

Phone ..... 88

### **ART BERNARD TRUCKING**

Livestock Hauled to Austin and  
South St. Paul  
Safe Service

**CASE FARM MACHINERY**

Phone 33-F-31

### **LYNCH'S**

### **Department Store**

Chatfield, Minnesota

### **Donald R. Stemp Druggist**

PHONE 30

Chatfield

Minnesota

### **Richter Drug Company**

THE CORNER STORE

Drugs - Prescriptions- School  
Supplies - Fountain Service

Phone 81

### **DIETZ & LUEDTKE Barber Shop**

First Class Work

First, Last and Always

### **OLSTAD**

### **Standard Service**

Sales-Oliver Implement-Service

Phone 296

Chatfield

Minnesota

### **CAPITOL BARBER SHOP**

J. L. Rogers

COMPLIMENTS OF

**Denny Lane and Swede Olson**

**Les Isensee**

**Stanley Burg**

## **PROFESSIONAL DIRECTORY**

**T. A. Clifton M.D.**

**O. W. Hauck, D.D.S.**

**H. M. Skaug, M.D.**

**C. J. Healy, D.D.S.**

**G. W. Bartle, Atty.**

**C. T. Perkins, Atty.**



**LEONE'S  
BEAUTY SHOP**

Come in Often and Look  
Your Best

For Safe, Dependable  
Transportation

**C. & N. W. Railroad  
and  
Railway Express**  
E. J. Lampe, Agent

**Egge Implement**

MINNEAPOLIS-MOLINE

Farm Machinery

Home Appliances

SALES — SERVICE

**Chatfield Electric  
Service**

Radios and Electrical Appliances  
Radios and Appliances  
Repaired

Phone ..... 144

**SISSON'S**

Offer Most for Your Money  
Every Day

GROCERIES      MEATS  
VEGETABLES

**Chatfield Motor Co.**

Sales — Chevrolet — Service

Allis Chalmers

D-X

Lubricating Motor Fuel  
760 Motor Oil

Chatfield, Minn.      Phone 25

**Hervey Implement  
Company**

Everything in Farm  
Machinery

SEE US BEFORE YOU BUY

**Red Owl Agency**

QUALITY FOODS

at Everyday Low Prices

Phone 287

Chatfield      Minnesota

**Decorah Produce  
Company**

Petty and Brogan, Managers

Buyers of Cream, Eggs  
and Poultry

**John Manahan Co.**

Feed Grinding and Mixing

FLOUR, FEED, SEEDS

GRAIN, STOKERS, COAL

MINNESOTA MACHINERY

Chatfield, Minnesota

**GOODRICH and  
SEARCY**

HIGHEST PRICES

ALWAYS

For Farm Produce

**NAGEL GARAGE**

General Repair-Wrecker Service

FORD SALES and SERVICE

Phone 102R

**PODEIN  
Skelly Service**

Joe Ward

BULK DELIVERIES

Phone 15 or 237

**D. W. BOETZER**

FURNITURE

and

FUNERAL SERVICE

**P. H. LAIVELL**

CLOTHING

Gent's Furnishings—Shoes

ALLIED CLOTHING

Phone 21

Chatfield

Compliments  
of  
**The Chatfield Dairy**

Owner  
**CARL EIDE**

**ERDMAN'S  
GROCERY**

Self-Serve — Cash-Carry  
Complete Line of Meats, Fruits  
and Groceries

Kasson  
Chatfield

Stewartville  
Mantorville

**Kivell Hardware**

Your Complete Hardware  
Store

Satisfaction Guaranteed



# *Autographs*



# *Autographs*







