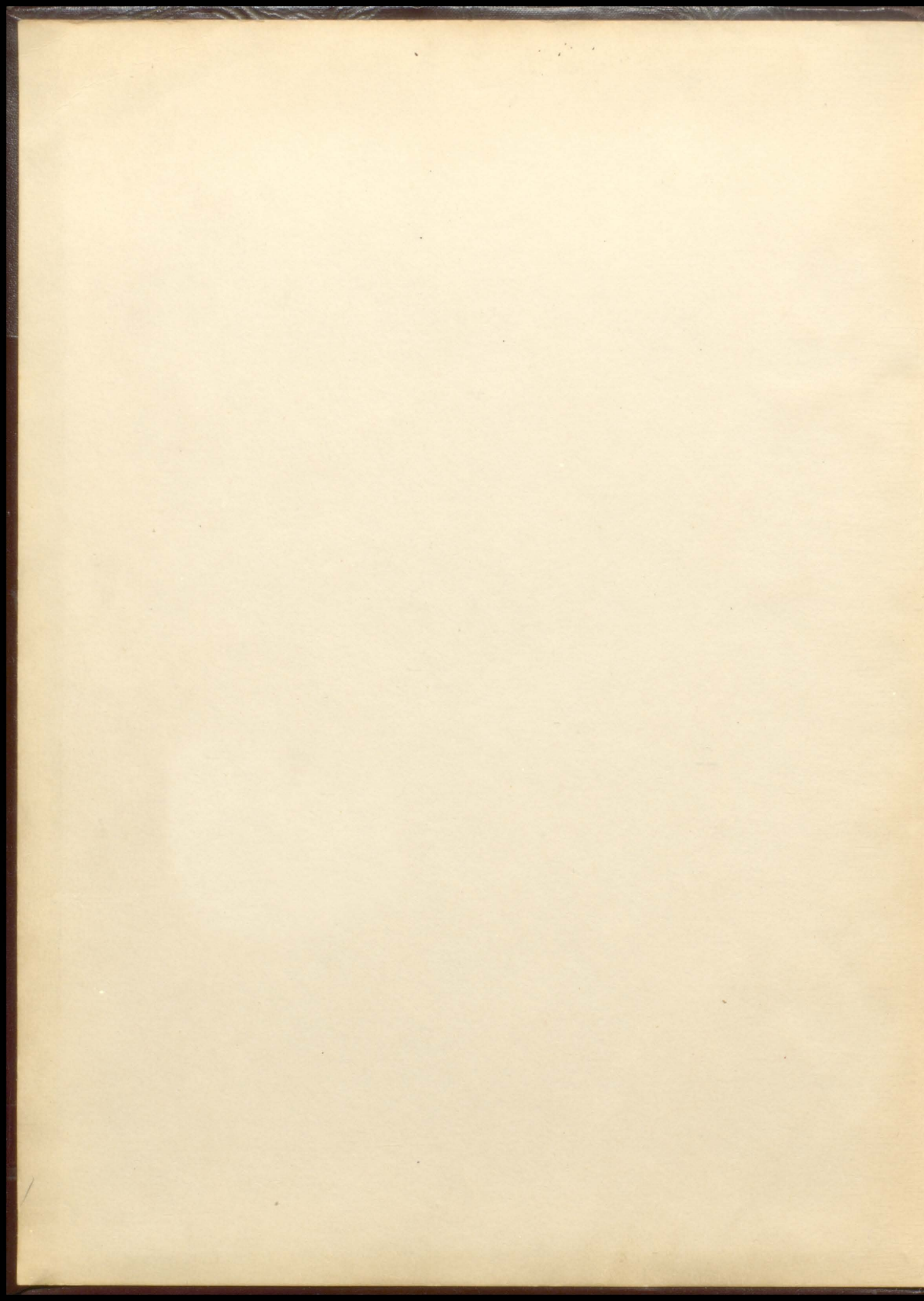
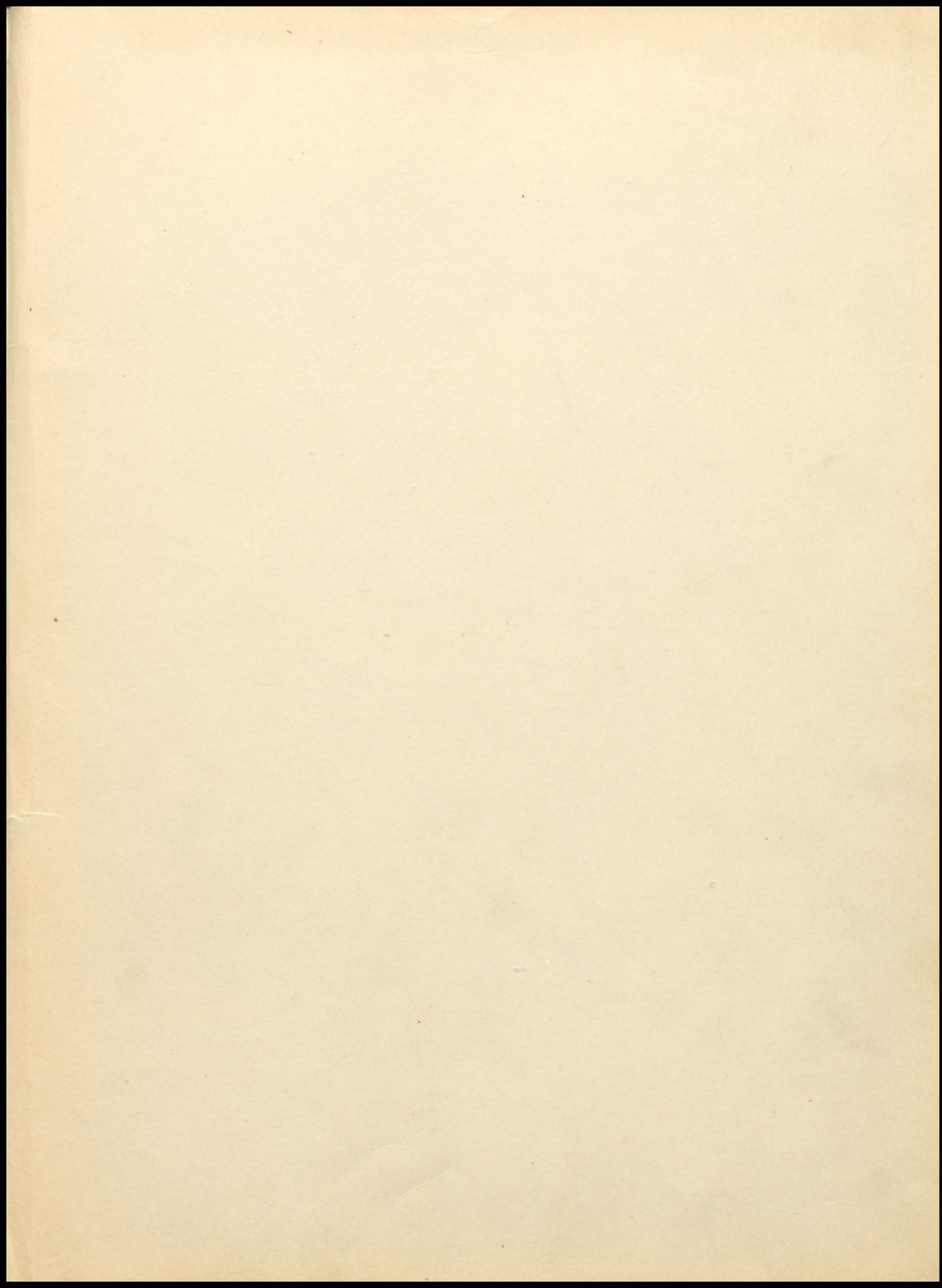
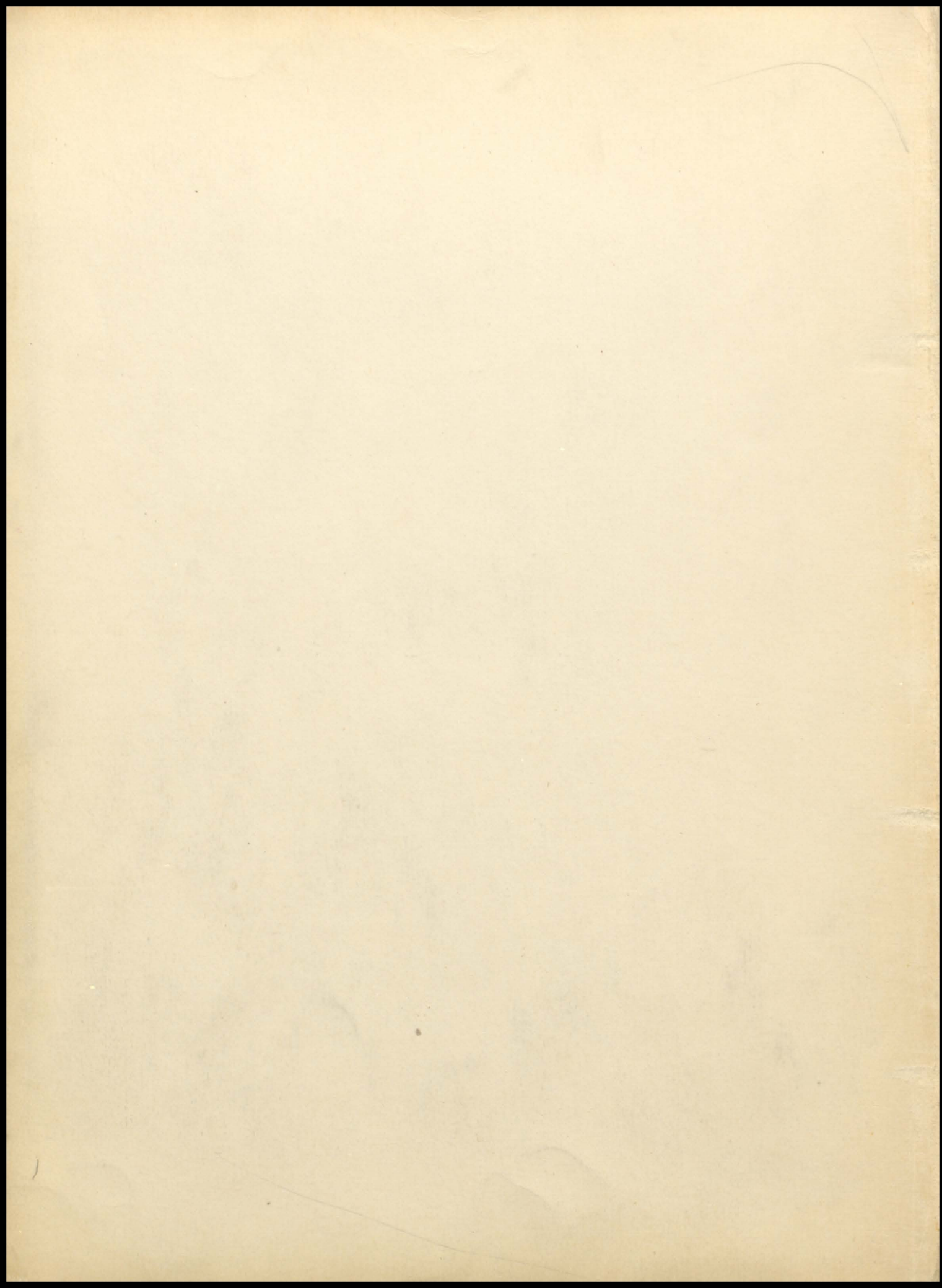


1949
Burn Oak









Administration



ADMINISTRATION



OLIVER P. BAKKEN
Superintendent

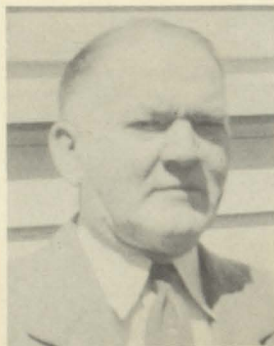


BENNETT HUSBY
Senior High Principal



CLIFFORD DRILL
Junior High Principal

School



DR. O. W. HAUCK



L. J. KIVELL

Board



H. P. THURBER



G. F. HALLORAN



G. H. POTTER

HIGH SCHOOL FACULTY



Estella Pieper



Elmer Salvog



Anna Vegdahl

Vegdahl



Alice Wall



Elizabeth Anderson

Shoemaker



Marie Kraus



Bernice Eklund



Wilmer Fure



Wayne Stephens



Ann Gallagher



Wesley Flanery



Clarence Arsers



Patricia Long



Cleanthes Zotalis



Alice Simpson



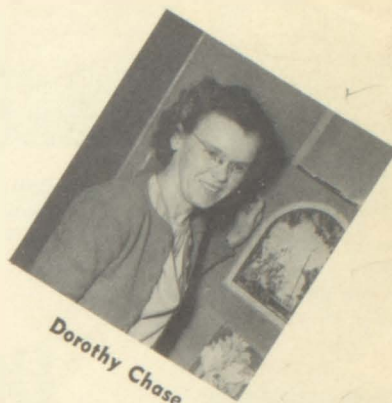
Mrs. James Wilson



Ella Elstad



Louise Duane



Dorothy Chase

Grade Faculty



Marion Morrisroe



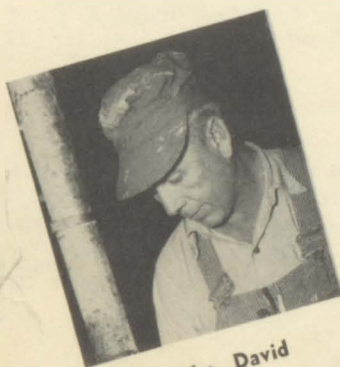
Dorine Daniels



Annabelle Neumann



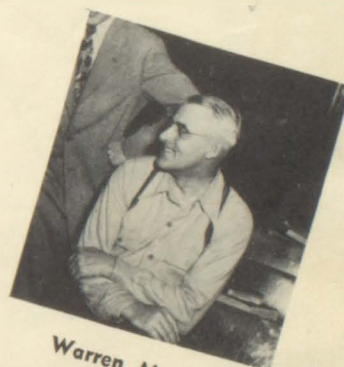
Mary Demmer



Wm. David



Wm. Hervey



Warren Mead



Cooks—A. Smalley, F. Krueger



Agriculture—A. Groen, I. Lambert



Features Committee: C. Walker, E. Holets, D. Baier, R. Grubb, E. Gils-ter, chairman.



Music Committee: H. Hal-loran, chairman; K. Flynn, S. Luedke, S. Arsers.



Dramatic Committee: S. Fin-stuen, M. Lynch, D. Brown, chairman; L. Boker.



Classes Committee: G. Stokes, J. Larson, L. Manahan, chairman; P. Delaney, M. Evans.

Burr Oak



Activities Committee: R. Finn, S. Cow, J. Fol-lensbee, N. Gardon, chairman.



Sports Committee: E. Horwood, co-chairman; L. Garry, E. Amundson, R. Follensbee, K. Rogers, co-chairman.



Photography Commit-tee: B. Skaug, L. Isensee, chairman.



Editorial Staff: Miss Wall, advisor; B. McRae, editor; R. Healy, associate editor, Mr. Husby, advisor.

The Annual Staff progressed under the supervision of Miss Wall, editorial advisor, and Mr. Husby, business advisor. Betty Ann McRae, editor, and Bob Healy, associate editor, chose committee chairmen from the senior class and they in turn appointed individual groups from the senior high for different activities. These committees worked exceedingly hard to finish the annual by the appointed time.



Art Committee: M. Knutson, N. Rose, chairman, J. Wheeler, I. Dempsey.



Typing Committee: M. Har-rington, R. Kadlec, D. Tangen, chairman; B. Overland, M. Peters.



Business Committee: J. Bak-er, B. Gaffron, F. Clark, bus-iness manager; L. Mundell, R. Yates.



Seniors



SALUTATORIAN

Shari Finstuen

Class Officer 4; National Honor Society 3, 4; Girls' Chorus 1, 2, 3, 4; Mixed Chorus 3, 4, Triple Trio 1, 2, 3, 4; Vocal Soloist 4; Triple Quartet 2; Class Play 3; One Act Play 3, 4; Burr Oak 2, 3, 4; Gopher Hi-Life 4; Pep Club 2, 4.



VALEDICTORIAN —

Maurice Harrington

National Honor Society 3, 4; Burr Oak 3, 4; Office Staff 4.



SALUTATORIAN

Robert Healy

National Honor Society 3, 4; Bond 1, 2, 3, 4; Brass Sextet 2, 3, 4; Orchestra 1, 2, 4; Mixed Chorus 3, 4; Baseball 1, 2, 4; Basketball 1, 2, 3, 4; Football 1, 2, 3, 4; Lettermen's Club 2, 3, 4; Pep Club 4; Burr Oak 2, 3; Associate Editor 4; Gopher Hi-Life 1, 3, 4; Stage Mgr. 4.



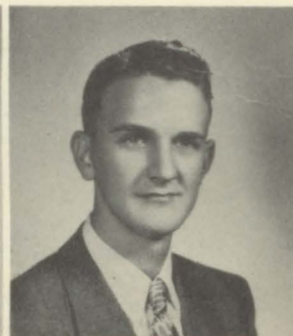
Edward Amundson

National Honor Society 4; Class Officer 3; Football 1, 2, 3, 4; Basketball 1, 2, 3, 4; Lettermen's Club 2, 3, 4.



Harriet Anderson

Mixed Chorus 3, 4; Girls' Chorus 1, 2, 3, 4; Gopher Hi-Life 4; Home Ec. Club 3; Office Staff 4.



Harry Anderson

Mixed Chorus 2, 3, 4; Boys' Sextet 3, 4; Junior Boys' Chorus 1; Triple Quartet 2; Basketball 2, 3, 4; Football Mgr. 4; Gopher Hi-Life 2, 3, 4; Film Staff 3, 4; Tumbling Team 1, 2; Class Play 4.



Irene Asleson

Girls' Chorus 1, 2, 3, 4; Mixed Chorus 2, 3, 4; Class Play 3; Declom Play 4; Declamation 3, 4; Gopher Hi-Life 1, 2, 3, 4; Cheerleader 2, 3, 4; Pep Club 3, 4.



Harlan Baker

Boys' Chorus 1; Film Staff 4.



Mildred Balcome

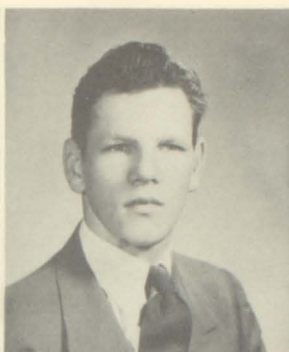
Girls' Chorus 1, 2, 3, 4; Mixed Chorus 3, 4; Gopher Hi-Life 4.



Dale Brown



Denis Brown
South Bend, Ind. 1, 2;
National Honor Society 4;
Class Officer 4; Band 3,
4; Mixed Chorus 3, 4;
Declom Plays 3, 4; Dec-
lamation 3, 4; Vocal So-
loist 3, 4; Gopher Hi-
Life 3, 4; Burr Oak 3, 4;
Boys' Sextet 3, 4; Or-
chestra 3, 4; Pep Club 4;
Class Play 4.



Francis Clark
Class Officer 2; Mixed
Chorus 2; Boys' Chorus
1; Basketball 1, 2, 3, 4;
Baseball 1, 2, 3, 4; Foot-
ball 1, 2, 3, 4; Declam
Play 4; Gopher Hi-Life
4; Burr Oak 4; Letter-
men's Club 2, 3, 4; Class
Play 4.



Inez Cocker
Girls' Chorus 1, 2, 3, 4;
Mixed Chorus 3, 4; Go-
pher Hi-Life 4.



Rita Connelly
Girls' Chorus 1, 3, 4;
Mixed Chorus 2, 3, 4;
Gopher Hi-Life 2, 3; Pep
Club 4.



William Coutier
Football 2, 3, 4; Basket-
ball Mgr. 3, 4; Baseball
Mgr. 2, 3; Lettermen's
Club 3, 4; Gopher Hi-
Life 3, 4.



Patrick Delaney
Class Officer 1; Mixed
Chorus 3, 4; Class Play
3, 4; Declam Play 3;
Burr Oak 4; Film Staff 4;
School Patrol 3, 4.



Irene Dempsey
Girls' Chorus 1, 2; Mixed
Chorus 3, 4; Gopher Hi-
Life 4; Burr Oak 3, 4;
Pep Club 4; G.A.A. 4.



Virginia Eide
Band 3, 4; Girls' Chorus
1, 2, 3, 4; Mixed Chorus
2, 3, 4; Gopher Hi-Life
3, 4; Pep Club 4; Home
Ec. Club 3.



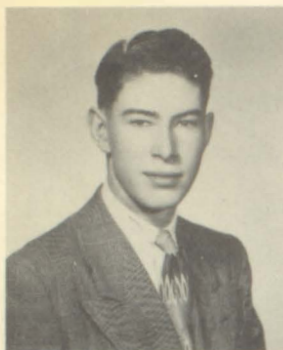
Jo Mae Engel
Girls' Chorus 1, 2, 3, 4;
Mixed Chorus 2, 3, 4.



Myra Evans
Band 1, 2, 3, 4; Girls'
Chorus 1, 4; Triple Trio
1; Accompanist 4; Or-
chestra 3, 4; Mixed
Chorus Accompanist 4;
Gopher Hi-Life 1, 2, 3,
4; Burr Oak 2, 3, 4; Pep
Club 4; Class Play 4.

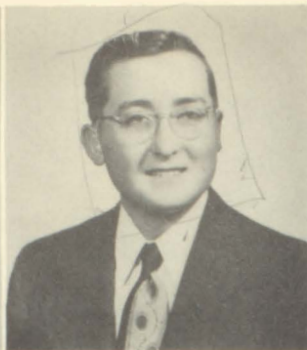
(I THINK)
coming

2 kids



Roy Finn

National Honor Society 4; Class Officer 3; Mixed Chorus 2, 3, 4; Burr Oak 4; Senate 4; Film Staff 4; School Patrol 3, 4.



Harley Flathers

Boys' Chorus 1; Mixed Chorus 2, 3, 4; Film Staff 4; Declam Play 3, 4; Class Play 3, 4.



Kathryn Flynn

Class Officer 3; Girls' Chorus 1, 2, 3, 4; Mixed Chorus 2, 3, 4; Declom Play 3, 4; Burr Oak 3, 4; Gopher Hi-Life 2, 3, 4; Pep Club 4; Home Ec. Club 3; GAA 4; Tumbling 1, 2, 3; Class Play 4.



Joanne Follensbee

Notional Honor Society 4; Girls' Chorus 1, 4; Mixed Chorus 2, 3, 4; Declamation 1, 2, 3, 4; Burr Oak 3, 4; Gopher Hi-Life 1; Senate 4; Constitution Comm. 3; Tumbling Team 1; GAA 4; Home Ec. Club 3; Pep Club 4.



Bernard Goffron

Boys' Chorus 1; Basketball 1, 3, 4; Mgr. 2; Football 2, 3, 4; Lettermen's Club 3, 4; Burr Oak 4; Tumbling 1, 3.



Rosemary Gardner

Preston 1, 2.



Eugene Gilster

Class Officer 2; Mixed Chorus 3, 4; Burr Oak 4; Gopher Hi-Life 4; Senate 4; Film Staff 4; School Patrol 3, 4.



Alice Moe Greenlee

Girls' Chorus 1, 2, 4; Mixed Chorus 3, 4.



Helen Halloran

Bond 1, 2, 3, 4; Girls' Chorus 1, 2, 3, 4; Mixed Chorus 3, 4; Burr Oak 3, 4; Gopher Hi-Life 1, 2, 3, 4; Prom Choirmon 3; Home Ec. Club 3, 4; Pep Club 4; Class Play 4.



Eugene Harwood

Mixed Chorus 2; Baseball 1, 2, 3, 4; Football 1, 2, 3, 4; Basketball 1, 2, 3, 4; Basketball Captain 4; Lettermen's Club 1, 2, 3, 4; Class Play 3, 4; Declam Play 3, 4; Burr Oak 3, 4; Gopher Hi-Life 3, 4; Senate 4; Pep Club 4.



Veronica Healy
Band 2, 3; Girls' Chorus
1, 2, 3, 4; Mixed Chorus
2, 3, 4; Class Play 3;
Burr Oak 1, 2, 3; Gopher
Hi-Life 1, 2, 3, 4; Cheer-
leader 2, 3, 4; Pep Club
2, 3, 4; G.A.A. 4; Home
Ec. Club 4.



Howard Holets
Tumbling Team 1.



Robert Holets
National Honor Society
4; Class Officer 4; Mixed
Chorus 2, 3, 4; Boys'
Sextet 3, 4; Triple Quar-
tet 2, Burr Oak 2, 3, 4;
Associate Editor 3; Editor
4; Film Staff 4; Office
Staff 2.



Carol Holger
Girls' Chorus 1, 2, 4;
Mixed Chorus 2, 3, 4;
Home Ec. Club 3.



John Jackson
Film Staff 3.



Mary Ellen Jefferis
Band 1, 2, 3, 4; Brass
Sextet 2, 3, 4; Instru-
mental Soloist 3; Gopher
Hi-Life 4; Pep Club 4.



Robert Kadlec
Mixed Chorus 2, 3;
Baseball 2, 3, 4; Bas-
ketball 3; Lettermen's
Club 3, 4; Burr Oak 4.



Glenn Kendall



Maxine Knutson
Burr Oak 2, 4; Office
Staff 3, 4.



Betty Lynch
Girls' Chorus 1, 2, 3,
Mixed Chorus 2, 3,
Gopher Hi-Life 1.



Leo Monahan
School Patrol 3, 4.



Lucille Monahan
Mixed Chorus 2, 3, 4;
Girls' Chorus 1, 2, 3, 4;
Triple Trio 4; Burr Oak
3, 4; Gopher Hi-Life 4;
Pep Club 4; Home Ec.
Club 3; Class Play 4.



Betty Ann McRae
National Honor Society
4; Band 1, 2, 3, 4;
Woodwind Quintet 2, 3,
4; Orchestra 4; Mixed
Chorus 4; Girls' Chorus
1, 3; Class Play 3; Burr
Oak 2, 3; Editor 4; Go-
pher Hi-Life 1, 2, 3, 4;
Pep Club 4; Home Ec.
Club 3, 4; Camera
Club 3.



Robert Mossing
Crosby, N. D. 1; Winona
2; Wabasha 3.



Beverly Overlund
Mixed Chorus 2, 3, 4;
Girls' Chorus 1, 2, 3, 4;
Burr Oak 4; Gopher Hi-
Life 4; Homecoming
Queen 4; Home Ec. Club
3; Office Staff 3.



Keith Rogers
Class Officer 2; Football
1, 2, 3, 4; Captain 4;
Basketball 1, 2, 3, 4;
Baseball 1, 2, 3, 4 Class
Play 3; Declam Play 3, 4;
Burr Oak 3, 4; Gopher
Hi-Life 2, 3, 4; Letter-
men's Club 1, 2, 3, 4;
Pep Club 4; Class Play 4.



Nancy Rose
Class Officer 2, 4; Band
1, 2, 3, 4; Instrumental
Soloist 4; Orchestra 3, 4;
Class Play 3; Declam Play
4; Senate 3; Homecoming
Attendant 3; G.A.A. 4;
Pep Club 4; Home Ec.
Club 3; Burr Oak 2, 3,
4; Gopher Hi-Life 1, 2,
3, 4; Camera Club 3.



Inno Moe Sobatke
Mixed Chorus 3, 4; Girls'
Chorus 1, 4; Office
Staff 2.



Genevieve Stokes . . .
Class Officer 1; Band 2,
3, 4; Orchestra 4; Burr
Oak 4; Gopher Hi-Life 3,
4; Homecoming Attendant
2; Girls' Chorus 1,
2, 3, 4; Mixed Chorus 2,
3, 4; Home Ec. Club 3;
Tumbling Team 1; Pep
Club 4.



Doris Tangen
Class Officer 1 Band 1,
2, 3, 4; Woodwind Quintet
1, 2, 3, 4; Girls' Chorus
1; Mixed Chorus 4; Burr
Oak 4; Gopher Hi-Life 1,
2, 3, 4; Home Ec. Club 3;
Pep Club 4; Office Staff 2;
Class Play 4.

**CLASS
COLORS**
Blue and
Silver



John Traufler
Band 1, 2, 3, 4; Brass
Quartet 1, 2; Brass Sex-
tet 3, 4; Mixed Chorus
4; Declamation 4; Class
Play 4.



Betty Trogstad
Girls' Chorus 1, 2, 4;
Mixed Chorus 2, 3, 4;
Gopher Hi-Life 4; Home
Ec. Club 3.

Charlotte Waller
San Diego, Calif. 1, 2,
Girls' Chorus 3, 4; Mixed
Chorus 3, 4; Gopher Hi-
Life 4; Home Ec. Club 3;
Pep Club 4; G.A.A. 4.

**CLASS
FLOWER:**
Pink Carnation

CLASS MOTTO: The Best Is Yet to Come

Last Will and Testament of the '49ers

We, the Seniors of Chatfield High School, Class of 1949, desiring to show generosity and good will toward friends and enemies, do hereby present the following gifts and bequests:

To Helen Anderson goes Harriet Anderson's flirtatious eyes.

Lorry Garry and Jerry Pease are the fortunate recipients of Harry Anderson's and Denny Brown's chorus seats.

Eddie Amundson leaves his comb to Lyle Baker. Irene Asleson simply leaves Gene.

Harlan Baker wills his dimples to Donald Sabatke.

Irene Dempsey's artistic ability is bequeathed to Jim Wheeler.

Rita Connelly leaves her typing efficiency to Violet Subra.

Jerald Banker receives Franny Clark's hitch-hiking thumb.

Gerald Ferguson leaves his wavy hair to Lyle Mundell.

Bill Coutier's mathematical knowledge moves on to Leland Warber upon special request of Miss Vegdahl.

Shari Finstuen wills her soprano voice to Deborah Haven.

Ginny Stokes, Ginny Eide, and Myra Evans forsake their good times to Rita Grubb, Theresa Waller, and Lila Kerby.

To Lyle Narveson goes Harley Flothers' yo-yo in hopes he keeps it moving.

Rosemary Gardner and Maxine Knutson leave their office duties to Helen Keefe and Catherine Manahan.

Helen Halloran, Kate Flynn, and Bonnie Healy leave their "gab sessions" to Kate Coutier, Maggie Lynch, and Mary Pauline Lynch.

Nancy Gordon needs her sense of humor but leaves it anyway, along with her laughter.

Bernie Gaffron wills his white sweat-shirt to anyone who can fill it.

Joanne Harwood is bequeathed Alice Moe Greenlee's pleasant nature.

Bob Holets departs from the GOPHER HI-LIFE, passing it on to Toots Lynch.

Carol Holger gives her shorthand book to Barbara Dunn along with her best wishes.

Gene Horwood leaves his locks to anyone lucky enough to receive them.

Maurice Harrington gives her "A's" to some lucky soul.

Howard Holets wills his jeans and overalls to Chuck Walker.

Bob Healy leaves nothing; Doris has all.

Mysterious Virginia Fenske receives Betty Joyce Lynch's mystery books.

Nancy Rose leaves her jokes to anyone who can stand them.

The famous grin of Keith Rogers is passed on to Sam Arsen, and his corduroys find their way to Bob Follensbee.

Betty Ann McRae departs from the honor roll to make way for Sylvia Luedke.

John Jackson gives his pocket books to Ronald Krueger.

Mildred Balcome and Betty Trogstad feel Doris Childs and Shirley Borth will be happy to have their duties as hall monitors given to them.

Leo Monohan wishes all the chemistry odors he so wisely manufactured to be given to Lowell Isensee to be distributed about the halls next year.

Chris Monohan and Dale Brown will their motorcycle boots to Freemon Welch and Jim Koperski in hopes they use them to best advantage.

Joanne Follensbee leaves her position as Student Senate secretary to Lilos Hanley feeling it ought to give her good reason to rush around.

Lucille Manahan requeathes her bubbling vitality to Mary Pat Peters and her Irish loyalty to Beverly Finseth.

To Jim Larson goes Johnny Traufler's quiet nature.

Beverly Overland wills her homecoming crown to any lucky girl who achieves it.

Mary Ellen Jefferis wishes to bestow her "locker-room blues" upon Rita Griffin.

Glenn Kendall passes on his ability to sleep in class after a bad night to Robert Yates.

Doris Tangen bequeathes her bangs to Barbara Hesby.

Bob Kadlec would leave his motorcycle to Jerry Finley, but he thinks that Jerry has managed so far that he will keep it.

Warren Ryther leaves his Ford to Jerry White, and his brother Wayne for pick-ups.

Charlotte Waller willingly wills her fountain pen to Janice Finley. (You'll need a barrel of ink for it, Janice.)

Eugene Gilster wills her car to Merlin Bandel so he won't have to walk to school on days the bus doesn't come.

Bob Mossing departs from his plaid shirts to leave them for Chuck Goldsmith. (Hope they fit, Chuck.)

Anna Mae Sabatke and Jo Mae Engel leave their partnership to Rosemary Lundt and Doris Jacobson.

Inez Cocker wills her position at the Red Owl store to Barbara Elton.


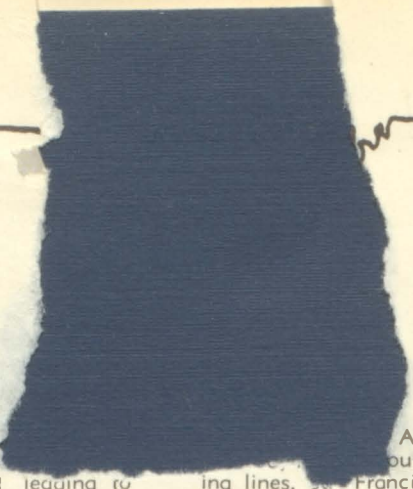
Gene, Keith, Franny, Eddie, Bernie, and Bob transmit their athletic skills to the athletes of the junior class in hopes they use them to full capacity.

Roy Finn and Pot Deloney give their spectacles to anyone who can't see straight.

And last, but not least, the Senior Class leaves to Mrs. Pieper the opportunity to enjoy her summer vacation.

This document declared legal upon approval of attending attorney, Miss Alice Wall, and witnesses B. H. Husby and O. P. Bakken.

Signed: Senior Class of '49



In the fall of 1937 a bar pioneers set out westward wagon, along a dusty old trail, leading to what is known as "Graduation". Under the superior guidance of Miss Pfiefer, there were few hardships on the first length of our journey, with the exception of a few drills during the late hours of the afternoon in the essentials of learning to remain quiet.

The wagon wheels creaked on and we found ourselves on the second lap of our journey under the instruction of Miss Hahn. It was here we first learned that four and four were seven—er—we mean eight!

Well, regardless, we rolled into third grade and found Miss Olson guiding our little band along. We all remember her unusual ideas for punishment, especially the boys. To her we bestow the credit for training us into the well-behaved, angelic senior class we are today.

On the fourth lap of our journey we trooped behind Miss Morrisroe to the auditorium every morning, where we little Fred Astaires and Gingers went through a period of "bow to your partner, bow to your neighbor". We really become quite talented, and once we even performed during an operetta. We were extremely disappointed though, when we found out the only scouts in the audience were boy scouts and not talent scouts.

In the fall of 1941 our covered wagon pulled into fifth grade where we found Miss Pfister waiting for us. The feature attraction this year was a fire escape right outside our window. The class considered it the fifth grade's private exit, and we never did get our fill of fire drills.

In Miss Ekstrand's sixth grade class we developed chivalrous natures (for which the senior class is well-known) in our study of the Middle Ages. We thrilled to stories of gallant knights on trusty steeds and fair ladies. The girls dressed dolls in the dress of the period, while the boys displayed their skill in ferociously designed shields.

It was 1943 when we forded the gap between grade school and junior high and found ourselves in Mr. Olson's seventh grade. We especially liked the changing of rooms for each class, even though we were sometimes embarrassed when we strolled into a wrong room, sat down, and looked around with despair into a roomful of strange faces.

In the eighth grade Miss Gallagher helped us prepare a talent show for the rest of the high school. One of the features was a play about a family's distress at a rich

All went well until near the end. We could remember their closing lines, so Francis Clark saved the day by yelling "Hurrah for the honeymoon!" until the curtains closed.

We pulled into ninth grade where Mr. Drill was waiting for us with some new travelers to add to our load. This increased our number to sixty-six. We believe we are safe in saying the most remembered task of our freshman class was making our *Ivanhoe* booklets.

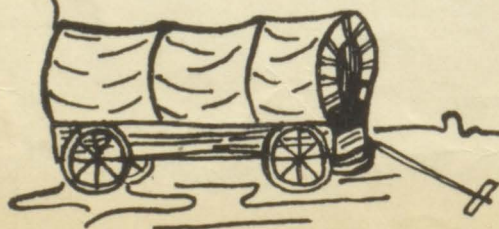
Well, here we are—sophomores, and the babies of the senior high with Miss Wall as our advisor. Ginny Stokes was our homecoming attendant this year, and the famous class of '49 again, the second year in a row, took top honors in our high school homecoming float competition.

The end of our journey nears as our wagon creaks its way into our junior year with Miss Vegdohl aiding us in the big event of the year—the junior-senior prom. It seemed as if everything went wrong from glue spilling all over the programs to some prankster calling at the last minute to say the orchestra couldn't come. Everything turned out alright though, and the juniors and seniors spent an enjoyable evening under palm trees in the Hawaiian Isle, dancing to the music of Henry Charles and his Orchestra. Our Homecoming attendant for this year was Nancy Rose.

Here we are almighty seniors, at the top of the ladder, with Mrs. Pieper, to guide us on the last lap of our journey. Queen Beverly Overland reigned over homecoming festivities, and for the fourth successive year the seniors took first prize in float competition.

The seniors can be more than proud of their accomplishments as its members have been part of the best athletic teams Chatfield has ever turned out and twelve of our seniors have helped the bond in keeping its usual high standards of musical accomplishments.

We find that sixteen of the original 1937 band are still with us today. They are Edward Amundson, Harriet Anderson, Harry Anderson, Myra Evans, Bernard Gaffron, Nancy Gordon, Helen Holloran, Gene Horwood, Bob Healy, Howard Holets, Mary Ellen Jeffris, Betty Joyce Lynch, Betty Ann McRae, Keith Rogers, Nancy Rose, and John Trouflet. Our objective "Graduation" can be seen on the horizon and it's time to climb back in our covered wagon and roll on if we're to reach it by June 3rd.





News Flash!

Some local news that might be of interest to Chatfield citizens is the grand opening of Bernie's Bakery. **Bernard Gaffron** is the owner and promises a choice variety of bakery goods. **Robert Massing** has sent word home that he is to leave on an army expedition to the South Pole sometime soon. **Irene Asleson** and her husband have moved to a ranch in the San Fernando Valley in California. When Miss Virginia Eide is not busy running her huge dairy farm, she gives piano lessons. **Keith Rogers**, former Chatfield athlete and former St. Thomas football star, now with the Chicago Bears, recently signed a contract for a reported \$25,000. In the latest edition of the *Form Journal* is an article on the average American farmer. The most interesting part of the article is the fact that **Chris Manahan** is picked as the typical American farmer. **Irene Dempsey** is employed as an artist, drawing pictures for magazine covers. **Betty Ann McRae**, editor of the new magazine, "Informed" declares it is fast becoming one of the most popular magazines on the market. **Doris Tangen** has taken a liking to secretarial work since becoming a personal secretary to the U. of M.'s Athletic Director, **Bob Healy**, **Beverly Overland** and **Betty Trogstad** are planning on opening a nite club in Pilot Mound.

Edward Amundson is spending the winter vacationing in Florida. Ed has found farming a most successful profession. The *Hollywood News* reports engineer **Harry Anderson** has revolutionized motion pictures with his recent invention of an entirely new movie projector. Fight promoter, **Ray Waller**, announced yesterday that Chatfield's own **Harlan Baker** will meet **Roxy Raymond** in Madison Square Garden for the Middleweight Championship of the world. In a recent survey **Mildred Balcome** has been named the outstanding woman chemist of the University of Minnesota's new Medical Center. Due to his recent successes in choral directing **Denis Brown** has been named director of the Metropolitan Choral Society. A local citizen reports seeing **Dale Brown** and **Lea Manahan** riding through Chicago on a freight train. These two boys have been missing since June 1949, when they were last seen hitchhiking out of Chatfield. **Harriet Anderson** and **Inez Cocker** are the new co-owners of the Red Owl Agency in Chatfield.

Francis Clark, Chatfield's contribution to the 1949-50 baseball, made baseball history by hitting a no-hit, no-run ball in the World Series. **Bill**

ton's famous accordion band which was recently rated the number one spot in America. Just back from his tour of the U. S. on a motorcycle, **Robert Kadlec** says he will enter the annual motorcycle climb at Whitewater State Park next week. Light-heavy weight boxer **Warren Ryther**'s decision to turn pro has been a topic of much conversation among sport fans in this area. **Helen Halloran**, **Bonnie Healy**, and **Kate Flynn** report a higher than average attendance at their famous "Three Musketeer" swimming and fishing summer resort. It seems that the nationally known **Eugene Gilster** has been working on a new racer type jet plane and plans to have his factory going at its peak by December. A local dispatch informs us that **Rita Connelly** is spending the summer and fall months visiting some distant relatives in Ireland.

We would like to inform you that three Chatfield girls are entering the national 4-H contest at Boston, Mass. in July. They are **Rosemary Gardner**, **Maurice Harrington** and **Jo Mae Engle** who have lived on farms near Chatfield for years. Success at last! **Lucille Monahan** has just been given a job as vocalist and soloist on the "O'Mollie's Irish Hour Show," which can be heard Mon., Wed., and Sat. evenings over many local stations. **Maxine Knutson**, formerly of Chatfield, and **Alice Greenlee**, rural resident of Chatfield, have been appointed by the National 4-H Board to travel abroad in foreign countries and report what 4-H clubs are doing to help the rural communities of Europe. **Nancy Gordon** of Chatfield has been given the position of Secretary of Maintenance at the General Motor's Plant in St. Paul.

Howard Holets and **Gerald Ferguson**, partners in the now famous Stay-a-While night club, are enjoying a thriving business. They are open three nights a week and hire only top flight orchestras. **Ray Finn**, formerly an agriculture teacher at Chatfield High School and a graduate from the class of 1949, is now teaching soil conservation at the University of Minnesota. The newly appointed manager of the Coast-to-Coast stores in Chatfield, Rochester and Kasson, is **Shari Finstuen**. If you have read the latest edition of the *Popular Mechanics*, you couldn't have missed the article on **Harley Flathers**, a graduate of Chatfield High School, and now President of an expanding yo-yo factory. He builds yo-yo's on a mass production basis to keep up with the ever increasing demand.

Mary Ellen Jefferis and **Betty Lynch** have opened their new lunch counter at the Hotel Chatfield. The new commercial teacher of Chatfield is Miss **Coral Halger**. The new president of Chatfield's P.T.A. is Mrs. W. Allen. **Anna Mae Sabatke**, Rochester, has announced its new editor **Howard Holets**, former editor of Chatfield's *Life*.

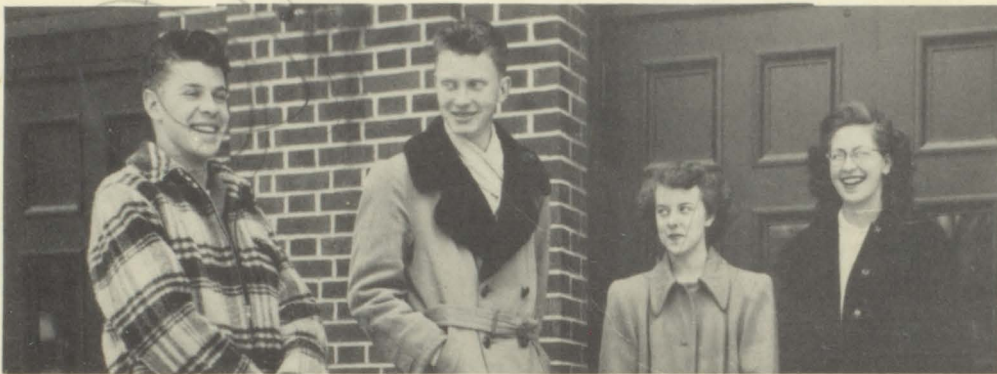
...reasons the Minneapolis ... of the BAA basketball ... all-around play of their ... **Harwood**. A former Uni ... and all Big Nine ... points last night to ... 190-94 win over the ... and Bailey-Ring ... in Minneapolis ... **Jackson's** spectac ... it's hard to be ... **Kendall** won ... dway classic ... for an av ... **Glenn** has ... the great ... first one ... senior at



JUNIORS



First row: L. Griffin, V. Fenske, D. Childs, Mr. Salvog, H. Anderson, S. Barth, J. Finley, J. Harwood.
Second row: B. Dunn, L. Hanley, B. Finseth, D. Haven, B. Hesby, R. Grubb, K. Coutier, B. Elton. **Third row:** S. Arsers, R. Follensbee, L. Garry, M. Bandel, L. Isensee, L. Baker, J. Banker, J. Finley.



Robert Follensbee,
President

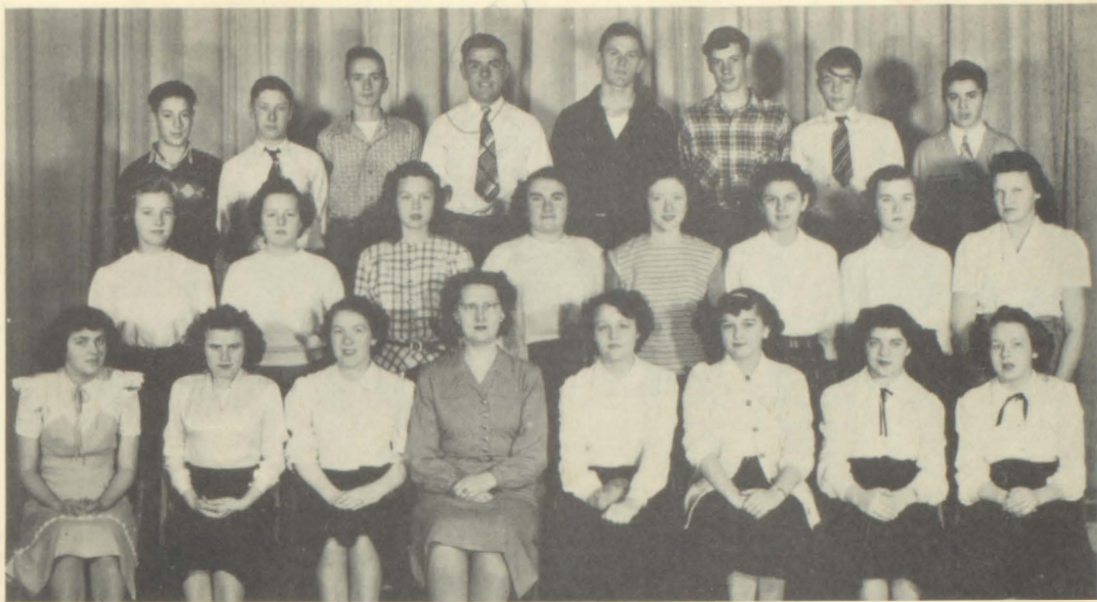
James Wheeler,
Vice-President

Helen Anderson,
Secretary

Deborah Haven,
Treasurer



First row: D.
J. Koperski, R.
Third row: L. N.
R. Yates.



First row: J. Follensbee, D. Danielson, S. Bothun, Miss Wall, M. Eide, E. Holets, E. Borth, M. Hanley **Second row:** D. Baier, C. Cunningham, M. Groby, F. Bailey, M. Fix, S. Cow, M. Anderson, H. Hemker. **Third row:** E. Dahl, H. Borgen, G. Danielson, L. Greenlee, M. Herrick, P. Denny, J. Baker, J. Holloran.

Jon Baker,
President



Carol Cunningham,
Secretary

Jack Larson,
Vice-president

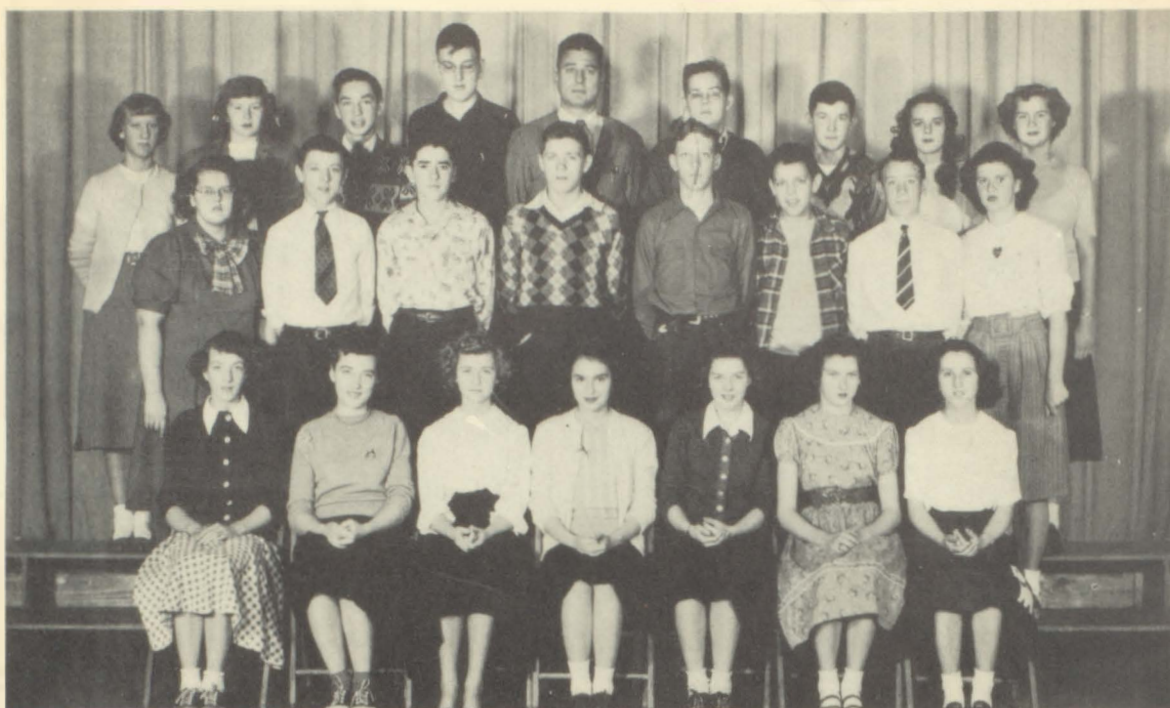
Sally Caw,
Treasurer



First row: A. Mead, L. Monahan, L. Rathbone, M. Stata, L. Lynch, E. Manahan, D. Priebe, B. Skaug. **Second row:** J. Larson, D. Oliver, B. Manning, J. Wheeler, M. Marshall, L. Lynch, B. Narveson, N. Redolen. **Third row:** E. Worden, B. Sutherland, R. Mohawk, D. Kohlmeyer, D. Olson, J. Sample, W. Mercer, E. Plank, M. Rain.

SOPHOMORES

FRESHMEN



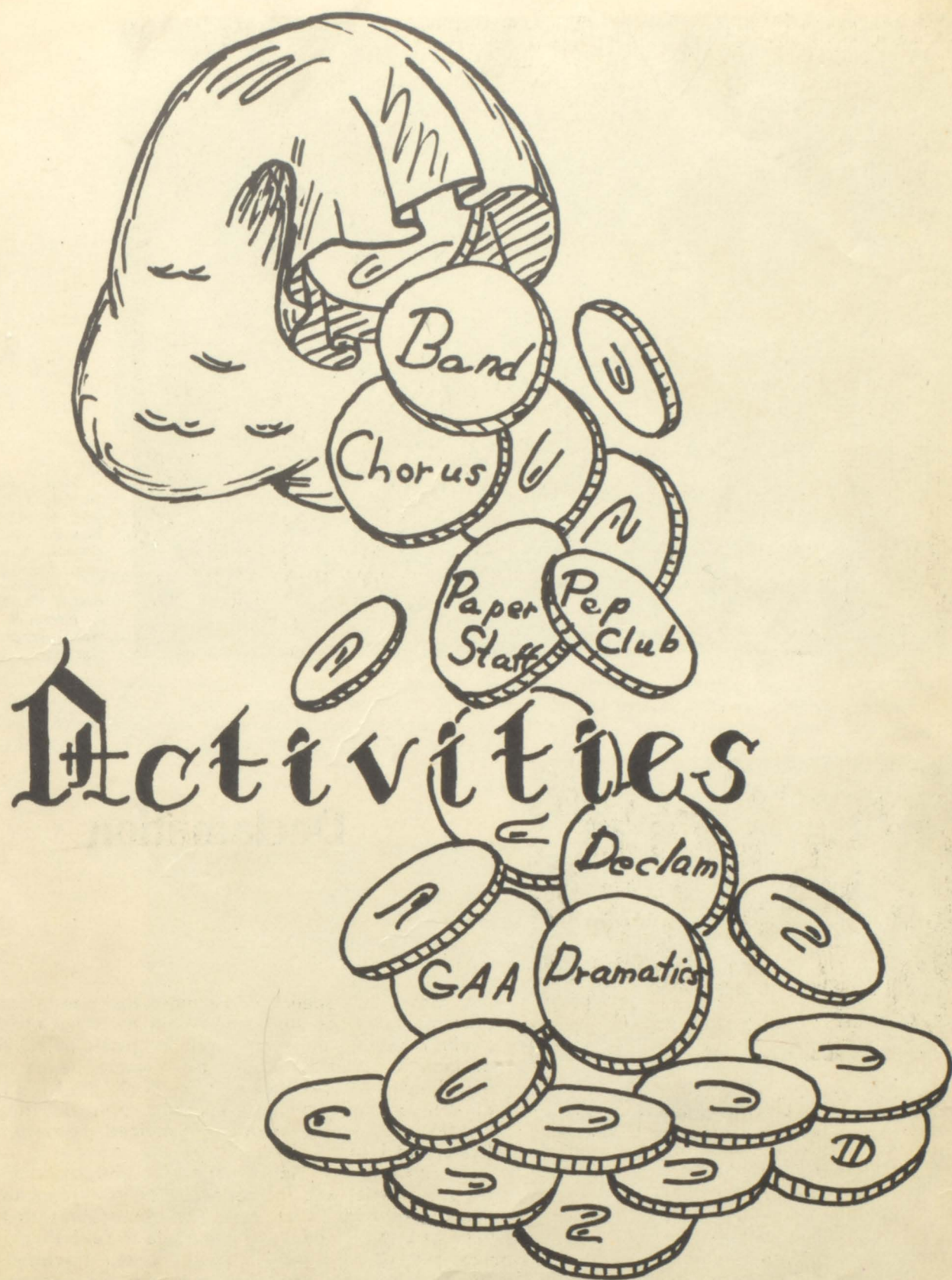
First row: J. Annis, J. Komnetz, I. Amundson, L. Greenlee, S. Fallensbee, J. Fix, M. Hollenbach. **Second row:** M. Haas, J. Holets, E. Dempsey, D. Eide, M. Kolstad, H. Jahns, L. Batterson, M. Herrick. **Third row:** L. Caffrey, B. Hisey, D. Elton, H. Kivell, Mr. Stephens, R. Haughtelin, R. Felt, J. Harwood, J. Borgen.



First row: A. Tuohy, B. Lundt, D. McRae, P. Payne, Mr. Fure, N. Lynch, P. Sabatke, J. McKeown, G. Overland. **Second row:** L. Lambert, M. Sissan, D. Sween, S. Lake, J. Manning, C. Lynch, B. Rangle, J. Patzner, A. Sutherland. **Third row:** L. Manahan, R. Wright, P. Lawler, D. Simpson, D. Plank, M. Manette, E. Speer, R. White, J. Tuohy, W. Scott, L. Narveson.

**PAGE
MISSING**

**PAGE
MISSING**



National Honor Society



First row: B. McRae, J. Follensbee, B. Hesby, B. Finseth, M. Harrington, S. Finstuen. **Second row:** E. Amundson, D. Brown, R. Holets, R. Healy, R. Finn. **Not pictured:** L. Hanley.



First row: L. Griffin, A. Mottern, K. McRae, R. Scott, H. Bakken, J. Halloran, P. Payne. **Second row:** J. Follensbee, F. Bailey, J. Thompson, C. Blumers, L. Amundson, L. Greenlee, D. Danielson. **Third row:** M. Evons, G. Stokes, I. Asleson, D. Brown, J. Lorson, J. Troufler, J. Harwood, J. Borgen.

Declamation

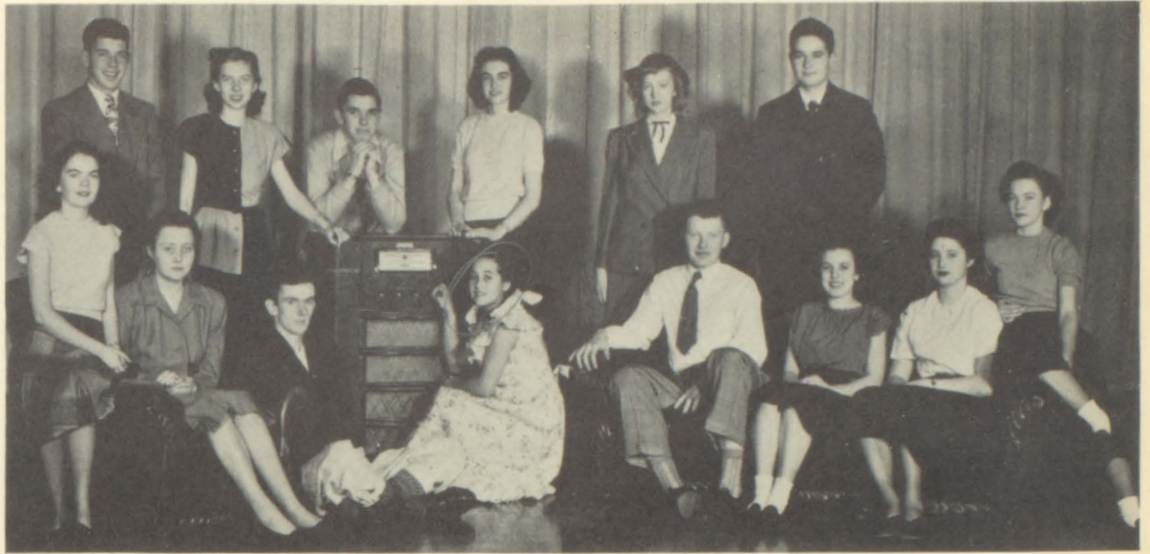
Chatfield's speech department had one of its most successful seasons this year. About twenty students, including several junior high pupils, participated in the declamation contest under the capable leadership of Mrs. Pieper, Miss Gallagher, Miss Wall, and Mr. Flanery. La Rita Griffin received a superior rating at the State Contest for her dramatic memorized reading, "The Murder of Lidice".

The one act play which represented Chatfield at the sub-district was "Minor Miracle" in which four men, half crazed with thirst, fear, and desperation, drift in a lifeboat awaiting death or a miracle to save them. Hale,

the youngest (James Wheeler) is the one who cannot control himself. Jordan (Gene Harwood), the mate, turns to God in prayer; McLane (Keith Rogers) becomes bitter, then cracks and becomes hysterical. Laslos (Bob Follensbee), the man with the gun, spoils one of their best chances for safety. When all hope is gone, a miracle saves them. Miss Eklund was the director of the play and Barbara Hesby was the student director.

"We Shook the Family Tree"

First row: M. P. Lynch, L. Hanley, L. Garry, J. Finley, J. Wheeler, R. Griffin, R. Grubb, M. Lynch. **Second row:** R. Follensbee, B. Hesby, L. Boker, Miss Ecklund, B. Finseth, L. Mundell.



The Junior Class Play "We Shook the Family Tree" by Hildegard Dobson was presented on the evening of Nov. 10 under the very able direction of Miss Bernice Ecklund and student director Barbara Hesby, was very well presented and received. The cast was as follows: Hildegard, Mary Pauline Lynch; Sally, Margaret Lynch; Bob, James Wheeler; Jimmy, Lyle Baker; Mother, Lilas Hanley; Father, Bob Follensbee; Freddie, Larry Garry; Paige, Janice Finley; Mrs. Shermer, Beverly Finseth; Mr. Shermer, Lyle Mundell; and the two more popular girls, Rita Grubb and Rita Griffin.

On the evening of May 20, the senior class presented as their class play, the very unusual western play, "Mollie O'Shaughnessy." A very nice job was done, and the play was presented in a very realistic background. The play was under the direction of Miss Bernice Ecklund with the assistance of Denis Brown, student director. Those in the cast are as follows: Harley Flathers, Lucille Manahan, Pat Delaney, Harry Anderson, John Traufler, Doris Tange, Gene Harwood, Keith Rogers, Francis Clark, Nancy Gordon, Myra Evans, Helen Halloran, and Kate Flynn.

"Molly O'Shaughnessy"

First row: Miss Ecklund, D. Tange, N. Gordon, K. Flynn, H. Halloran, M. Evans, L. Manahan. **Second row:** H. Anderson, H. Flathers, P. Delaney, J. Traufler, F. Clark, K. Rogers, G. Harwood, D. Brown.





Betty McRae, Exchange Ed.



Robert Holets, Editor



Mary P. Lynch, Asst. Editor



Denis Brawn, Sports Ed.

Gopher

Hi-Life



Miss Kraus, Advisor



Mary Sisson, Jr. High Ed.



Nancy Gordon, Senate Rep.



Lois Amundson, Jr. High Ed.



First row: J. Tuohy, S. Arsers, J. Holets, L. Greenlee, P. Connelly, S. Bothun, E. Holets, M. Pease, A. Ferguson, L. Bailey, B. Olstad, D. McRae, T. Madison, H. Bakken, T. Nagel. **Second row:** B. Olstad, S. Ober, M. Haas, J. Finley, J. Harwood, L. Griffin, P. Pavlish, S. Lake, I. Cocker, B. Dunn, S. Luedke, L. Rathbone, B. Skoug, M. Eide, L. Manahan, I. Dempsey, C. Blumers, D. Baier, E. Manahan, J. Follensbee, M. Hanley, C. Matzke, L. Rasmussen, E. Barth. **Third row:** D. Childs, V. Subra, M. Anderson, J. Harwood, F. Bailey, M. Stata, I. Asleson, M. Lynch, B. Finseth, B. Hesby, H. Keefe, H. Anderson, G. Stokes, J. Thompson, V. Eide, M. Evans, K. Coutier, N. Rose, D. Tangen, M. Marshall, M. Jefferis, N. Gordon, C. Waller, C. Manahan. **Fourth row:** L. Hanley, M. Bolcome, V. Healy, H. Holloran, K. Flynn, J. Halloran, E. Harwood, L. Garry, J. Wheeler, J. Larson, J. Larson, R. Healy, K. Rogers, B. Coutier, E. Gilster, B. Overland, B. Trogstad, S. Finstuen, M. Peters.

FILM

S T A F F



Seated: L. Boker, H. Anderson, H. Boker, D. Soborke, R. Yates, R. Finn, L. Mundell, E. Gilster, H. Flathers, W. Ryther, M. Bandel. **Standing:** J. Boker, F. Welch, Mr. Drill, P. Delaney.

SCHOOL

P A T R O L



First row: L. Manahan, R. Finn, Mr. Husby, P. Delaney, E. Gilster. **Second row:** R. Yates, L. Mundell, M. Bandel, D. Sobotke.

C. H. S. Band



First row: B. McRae, S. Luedke, L. Amundson, C. Arsers, T. Nagel, L. Rasmussen, P. Johnson, H. Holloran, V. Eide, J. Wheeler. **Second row:** S. Cow, S. Lake, D. Erdman, J. Holets, D. Tangen, A. Mottern, H. Anderson, J. Thompson, D. Haven, N. Rose, B. Elton, D. Brown, E. Holets. **Third row:** D. Simpson, M. Sisson, S. Arsers, F. Clark, J. Traufler, L. Boker, G. Wheeler, T. Lake, J. Holloran. **Fourth row:** V. Healy, J. Touhy, G. Stokes, M. Jefferis, D. Elton, L. Mundell, M. Evans, J. Wheeler, R. Healy, C. G. Arsers, Director.



C. G. Arsers
Director



N. Rose—Soloist



S. Arsers—Soloist



WOODWIND

Left to right: H. Anderson, B. McRae, J. Holets, D. Tangen, A. Mottern.

Under the capable leadership of Mr. C. G. Arsers, the band, comprised of forty students has played at pep fests, football and basketball games, and homecoming activities. The annual winter concert was held February 17, and a spring concert preceded the District Music Contest which was held April 23 in Chatfield. The band's selection for the contest was "Merry Wives of Windsor," an overture.

Other smaller organizations which took part in the contest were the Woodwind Quintet, which played "Ballet Egyptian" and the Brass Sextet playing "La Fiesta."

Soloists this year were Nancy Rose, tenor saxophone, who played "Estil-ian Caprice" and cornetist Sam Arsers playing "Phenomenal."

BRASS SEXTET

First row: S. Arsers, J. Holets, J. Trauffer. Second row: J. Tuohy, M. Jefferis, R. Healy.



CHORUS

Mixed
Senior Girls



First row: S. Bothun, A. Mead, V. Subra, M. P. Lynch, R. Connelly, Miss Long, director; E. Gilster, J. Holloran, D. Brown, B. Skoug, M. Eide, L. Manahan, E. Borth, A. Sobatke, L. Kirby. **Second row:** M. Anderson, V. Fenske, C. Manahan, B. Dunn, R. Grubb, B. Hesby, D. Jacobson, S. Caw, H. Holloran, H. Flathers, J. Troufler, D. Tangen, I. Asleson, D. Baier, L. Monahan, M. Hanley, C. Woller, G. Stokes. **Third row:** L. Rathbone, I. Cocker, S. Finstuen, C. Holger, B. Trogstad, B. Finseth, H. Keefe, M. McRae, H. Anderson, P. Deloney, H. Anderson, L. Lynch, H. Anderson, S. Luedke, M. Peters, V. Healy, V. Eide, M. Evans, J. Follensbee. **Fourth row:** M. Marshall, J. Ergel, B. Overland, B. Elton, A. Greenlee, T. Woller, B. Lynch, K. Flynn, R. Healy, J. Lorson, R. Finn, M. Bolcome, D. Hoven, L. Hanley, N. Gordon, I. Dempsey.



The vocal music department is comprised of the Mixed Chorus, Senior Girls' Chorus, Junior Girls' Chorus, Senior Girls' Triple Trio, and Junior Girls' Triple Trio. These groups are under the direction of Miss Patricia Long, pictured at left.

Soloists for the music contest were Denis Brown, baritone, and Shari Finstuen, soprano.

The Boys' Sextet, which was organized by the boys themselves, has sung at different social events during the year.



First row: R. Connelly, S. Bothun, M. P. Lynch, A. Mead, V. Eide, G. Stokes, Miss Long, director; L. Monahan, B. Skoug, M. Eide, I. Asleson, D. Baier, E. Barth. **Second row:** L. Rathbone, A. Sobatke, L. Manahan, I. Cocker, L. Monahan, B. Hesby, C. Holger, L. Lynch, B. Healy, H. Keefe, C. Woller, J. Follensbee, K. Manahan, S. Borth. **Third row:** H. Anderson, A. Greenlee, B. Lynch, J. Engel, B. Trogstad, B. Overland, M. Bolcome, K. Flynn, H. Halloran, D. Haven, S. Finstuen, M. Peters, B. Manning, N. Gordon.

Senior Girls' Triple Trio

First row: M. Evans, E. Borth, M. Lynch, B. Skaug, L. Monahan. **Second row:** D. Boier, B. Hesby, B. Finseth, S. Finstuen, D. Hoven.



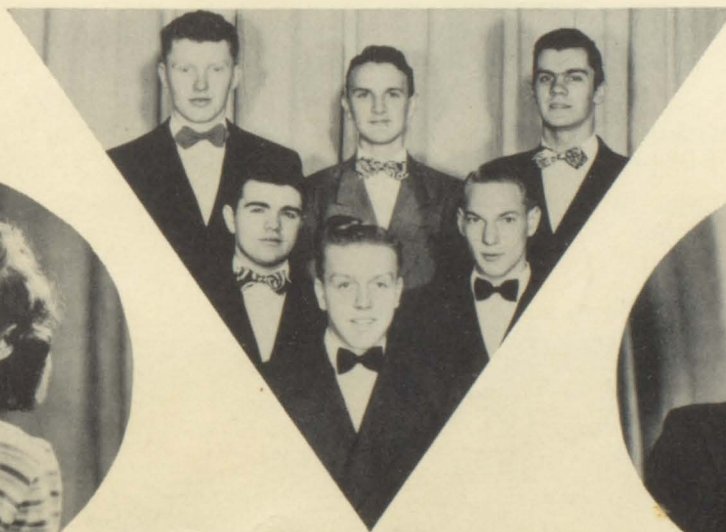
Junior Girls' Triple Trio

Left to right: L. Amundson, S. Lake, M. Sisson, P. Pavlish, J. Horwood, J. Thompson, B. Olstad, C. Blumers, L. Rasmussen, P. Tuohy.

Boys' Sextet



Shari Finstuen, Soloist



First row: D. Brown, R. Holets, E. Gilster. **Second row:** J. Wheeler, H. Anderson, J. Larson.



Denis Brown, Soloist

fairy

Homecoming



First row: Patsy Matousek, Charlotte Finley, Sharlene Dresler. **Second row:** Peter Matousek, Donald Turner. **Third row:** Beth Manning, Keith Rogers, Queen Beverly Overland, M. P. Lynch.



Queen Beverly Overland reigned over the homecoming festivities on October 15. The queen and her attendants, Mary Pauline Lynch and Beth Manning, were crowned by football captain, Keith Rogers, assisted by Sharlene Dresler, Donald Turner, Charlotte Finley, and Patsy and Peter Matousek as pages and gift bearers.



Following the coronation, the homecoming parade preceded the Harmony-Chatfield football game which the Gophers won 12-0. Prize winning floats were made by the seniors and seventh grade.

The climax of the day's activities was the homecoming dance in the school auditorium.



49ers strike it rich

Sports



UNDEFEATED

SCORES

31—Chatfield
7—Spring Valley

14—Chatfield
0—Spring Grove

20—Chatfield
0—Caledonia

12—Chatfield
0—Harmony



Gene Harwood



Kieth Rogers



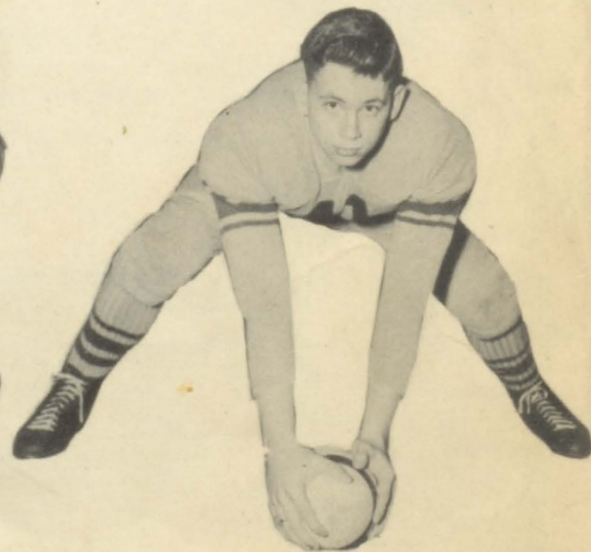
Larry Garry



Jim Wheeler



Ed Amundson



Bernie Gaffron

CHAMPS



Lowell Isensee



Francis Clark

Chatfield44
Mabel0

Chatfield13
Preston6

Chatfield18
Lanesboro0

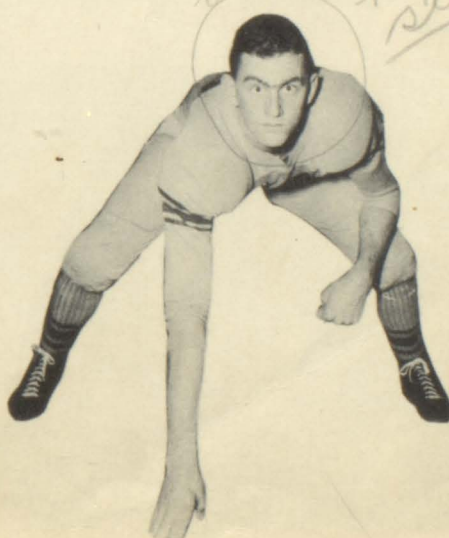
Chatfield7
- St. Charles6



Bill Coutier



Bob Healy



Jim Larson



Coach Salvog

FOOTBALL



First row: D. Sobatke, J. Hesby, R. Scott, K. McRae, H. Garry, asst. manager; A. Mottern, L. Botterson, J. Holloran, G. Austin. **Second row:** L. Isensee, B. Goffron, K. Rogers, captain; G. Horwood, L. Garry, J. Larson, E. Amundson, J. Wheeler, R. Healy. **Third row:** Mr. Salvog, coach; F. Clark, G. Coe, M. Herrick, D. Olson, R. Mohawk, L. Greenlee, W. Coutier, R. Follensbee, Mr. Fure, asst. coach. **Fourth row:** J. Witte, J. Boker, L. Narveson, H. Anderson, C. Healy, J. Banker, R. Yates.

Chatfield under the coaching of Elmer Salvog and his assistant, Wilmer Fure, started what was destined to be a perfect season by drubbing Spring Valley 31-7. The Gophers showed a potent passing attack and power through the line.

In the Spring Grove and Caledonia games, the Gophers were content to stick to the ground and rely on power. Chatfield was victorious in both encounters, winning 14-0 over Spring Grove and 20-0 over Caledonia.

The big Harmony club proved to be the Gopher's first real test. Two quick thrusts in the first half put the Gophers ahead 12-0, and brilliant line play in the last half held Harmony scoreless. There was no rest for the Gophers the next Friday afternoon as they took on a highly-touted Preston aggregation. The Maroon and Gold hit pay dirt twice in the first half to lead 13-6 at the half. The score didn't change any as both teams played tough defensive ball the last half.

The Gophers turned the tide on Mabel and spoiled the Wildcat's homecoming by thrashing them 44-0. Lanesboro fell the next week 18-0, the game being played in a downpour of rain. This game gave the Gophers the District 1 championship having rolled up 121 points to their opponents' 6.

The annual Armistice Day game with St. Charles brought together two unbeaten teams. Chatfield



won 7-6 in one of the most bitterly fought games of the long rivalry between the two schools. Seven seniors played their last game that day. They were: Captain Keith Rogers, Gene Harwood, Francis Clark, Eddie Amundson, Bill Coutier, Bernie Gaffron, and Bob Healy. Captain Rogers led the team in ground gaining, while Lowell Isensee, George Coe, and Francis Clark also picked up important yardage. Rogers and Harwood did most of the passing with ends, Garry and Larson, on the receiving end. Very little yardage was made through the Gopher's line which was led by Eddie Amundson at guard.

The co-captains elected for the 1949-50 football season are Larry Garry and Jim Wheeler.

BASKETBALL



First row: J. Tuohy, J. Boker, J. Halloran, L. Batterson, D. Simpson. **Second row:** Mr. Fure, F. Clark, K. Rogers, Capt. Horwood, J. Larson, L. Garry, Mr. Solvog. **Third row:** W. Coutier, manager; L. Isensee, E. Amundson, R. Healy, D. Olson, B. Goffron, E. Dempsey, asst. manager. **Fourth row:** J. Holets, L. Narveson, C. Healy, J. Wheeler, H. Anderson, G. Wheeler, J. Hesby.

The 1948-49 basketball season brought Chatfield its second District I tournament championship. The season's record, including tournament play, gave the Gophers 18 victories in 21 encounters. Chatfield had won 4 straight games when they ran into a tough Harmony club and were down 34-32. In a return engagement in the semi-finals of the tournament, the Gophers avenged their defeat by edging Harmony 42-39.

The Gophers stepped out of the conference and defeated two good teams. St. Charles and Lake City fell by scores of 47-35 and 46-30, and in the last home game the Maroon and Gold dropped the favored Kasson team 52-45 to keep their home-floor slate clean.

Coach Fure's men drew Wykoff in the opening round of the tournament and defeated them 56-28. In the quarterfinals they dropped Lanesboro 48-29, and then knocked off Harmony for the right to enter the finals. Mabel proved no match for the Gophers as they fell 43-27 to give Chatfield its second straight crown. Much credit should go to Coach Fure, who in his first year of coaching led the team to the championship. High point men for the year were Jim Larsen and Captain Gene Harwood.

The six seniors who will be lost to next year's team by graduation are Gene Harwood, Keith Rogers, Franny Clark, Eddy Amundson, Bob Healy, and Bernie Gaffron.

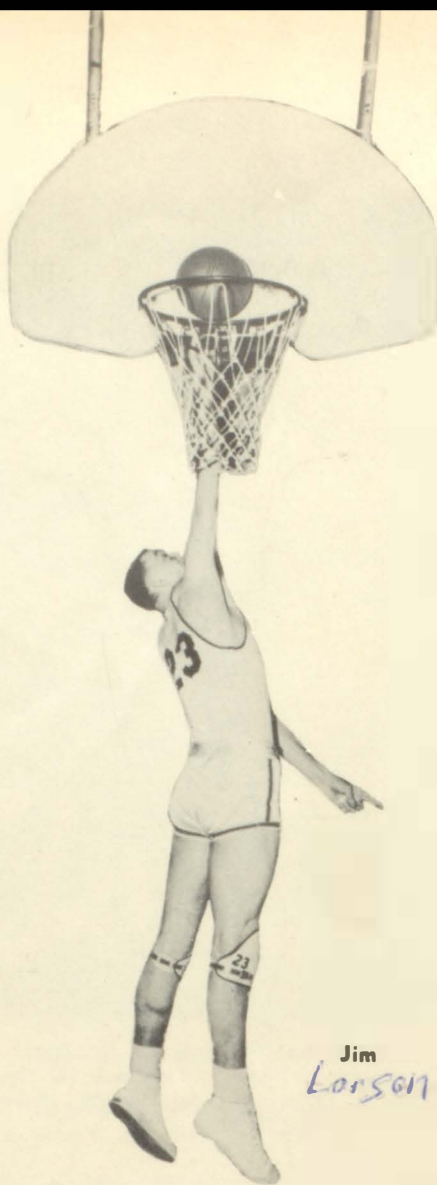


Coach Fure

CHAMPS



Gene



Jim
Larson



Larry



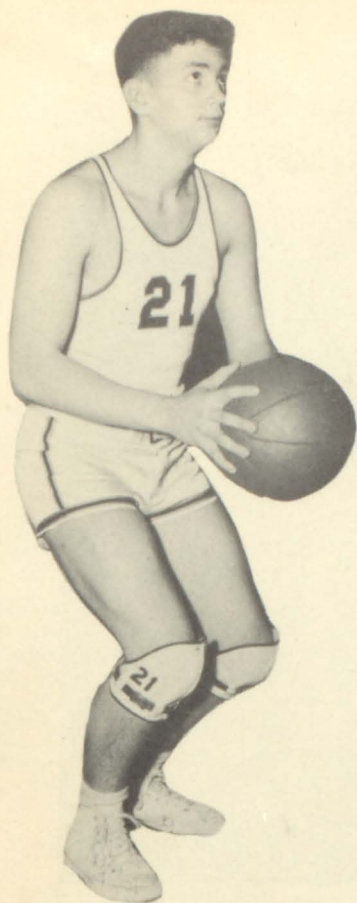
Francis

SCORES

C.H.S.....37	Rushford29
C.H.S.....73	Lanesboro43
C.H.S.....41	Wykoff26
C.H.S.....65	Houston33
C.H.S.....32	Harmony34
C.H.S.....46	Lake City30
C.H.S.....78	Peterson40
C.H.S.....47	St. Charles35
C.H.S.....51	Caledonia49
C.H.S.....61	Wykoff38
C.H.S.....72	Spring Grove ...31
C.H.S.....41	Mabel39



Keith



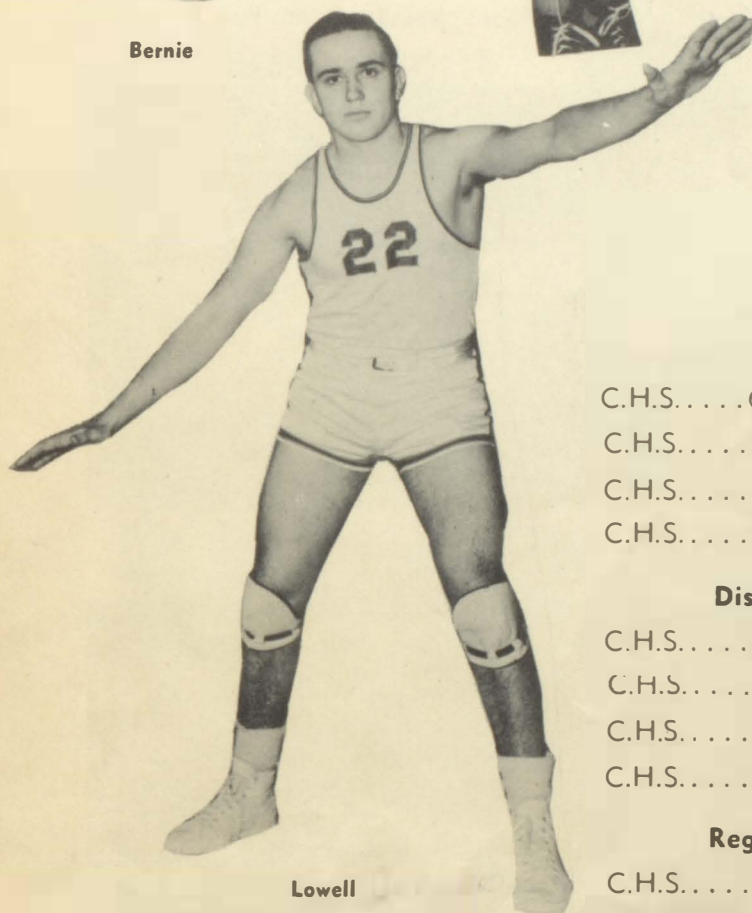
Bernie



Ed



Bob



Lowell

SCORES

C.H.S.....62	Preston50
C.H.S.....52	Kasson45
C.H.S.....59	Canton54
C.H.S.....34	Luther Res..44

District Tourney

C.H.S.....56	Wykoff28
C.H.S.....48	Lanesboro ..29
C.H.S.....42	Harmony ...39
C.H.S.....43	Mabel27

Regional Tourney

C.H.S.....44	Rochester ..64
--------------	----------------



Jerry

Baseball



First row: F. Clark, R. Healy, J. Larson, G. Harwood, L. Garry, K. Rogers. **Second row:** Mr. Fure, L. Batterson, J. Baker, J. Wheeler, R. Kadlec, J. Holets, J. Halloran.

CHEER



Left to right: B. Skaug, M. Eide, V. Healy, R. Grubb, I. Asleson.

LEADERS



Left to right: C. Matzke, J. Manohan, P. Tuohy, D. Priebe.

PEP CLUB



First row: P. Tuohy, C. Matzke, B. Skoug, M. Eide, V. Healy, R. Grubb, I. Asleson, J. Monahan, D. Priebe. **Second row:** Miss Eklund, P. Wiedenheft, J. Holloran, L. Dempsey, C. Peters, D. Lampe, M. Pease, M. Hulke, M. Worden, B. Olstad, C. Blumers, B. Olstad, R. Connelly. **Third row:** L. Lambert, M. Lynch, C. Woller, I. Dempsey, V. Eide, L. Monahan, M. Evans, I. Monahan, D. Tangen, G. Stokes, L. Greenlee, B. Hulke, N. Rose, N. Gordon, J. Follensbee, D. Danielson. **Fourth row:** K. McRae, S. Lake, L. Amundson, M. Lynch, M. Jefferis, L. Lynch, P. Payne, D. McRae, S. Bothun, S. Cow, K. Coutier, R. Griffin, S. Finstuen, B. Finseth, S. Luedke, B. Dunn, M. Haas, C. Cunningham. **Fifth row:** B. McRae, J. Harwood, M. Sisson, V. Fenske, B. Hesby, J. Thompson, M. Peters, F. Bailey, J. Larson, D. Brown, R. Healy, P. Pavlish, T. Woller, K. Flynn, H. Holloran, D. Hoven, B. Elton, J. Follensbee, D. Sween.

Girls' Tumbling Team

First row: L. Kerby, S. Harwood, J. Gordon, P. Wiedenheft, S. Tuohy. **Second row:** J. Komnetz, R. Ober, P. Payne, L. Greenlee, L. Rasmussen, P. Wiedenheft. **Third row:** T. Waller, J. Harwood, N. Gordon, J. Thompson, R. Grubb, V. Fenske, L. Amundson, B. Olstad.

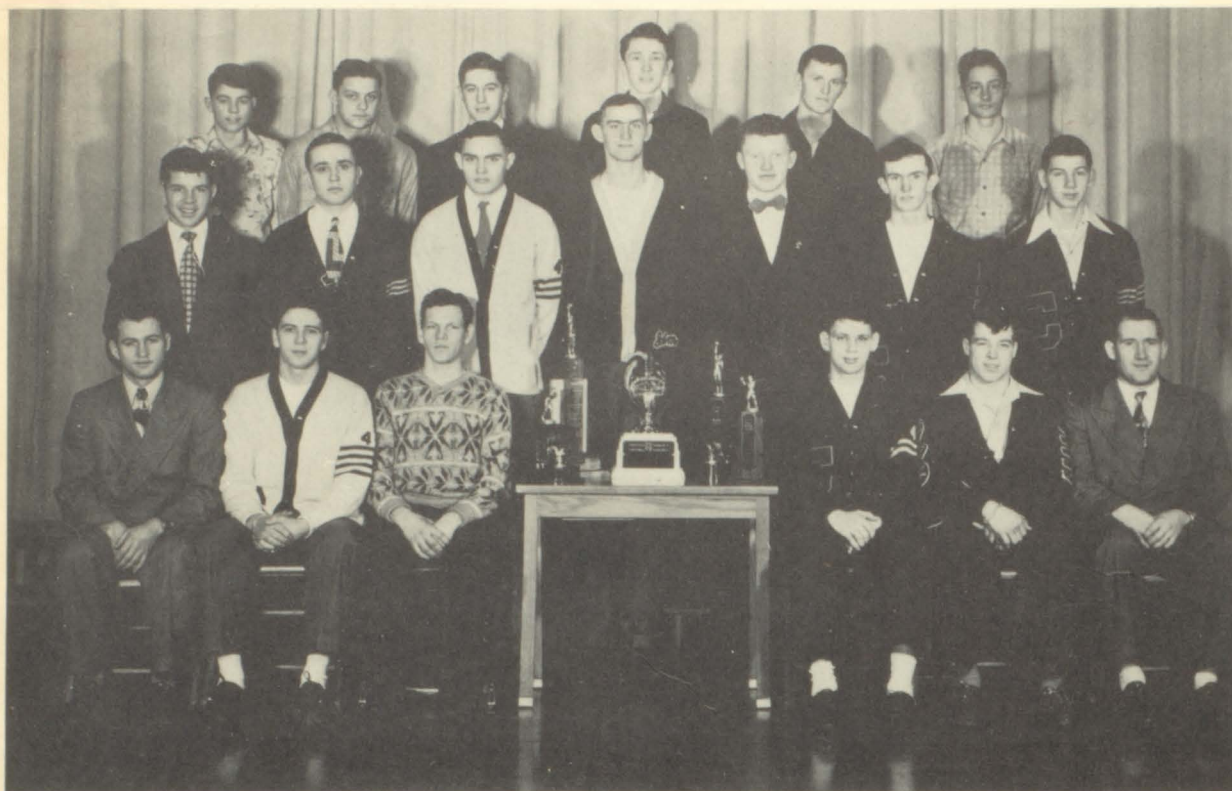


G. A. A.



First row: J. Follensbee, P. Wiedenheft, J. Monahan, B. Hulke, M. Pease, M. Hulke, D. Priebe, M. Worden, J. Holloran. **Second row:** P. Payne, J. Komnetz, B. Olstad, B. Kinneer, B. Speer, B. Skoug, R. Griffin, C. Cunningham, J. Follensbee, C. Peters, M. Hollenbach. **Third row:** V. Fenske, S. Lake, B. Rongley, D. Sween, D. McRae, R. Grubb, N. Gordon, C. Waller, I. Dempsey, L. Amundson, M. Haas. **Fourth row:** M. Sisson, B. McRae, J. Harwood, J. Monning, V. Healey, K. Flynn, H. Holloran, T. Waller, N. Rose, B. Monning.

Letterman's Club



First row: Mr. Fure, G. Horwood, F. Clark, B. Gaffron, K. Rogers, Mr. Solvog. **Second row:** R. Follensbee, L. Isensee, R. Healy, J. Larson, J. Wheeler, L. Garry, E. Amundson. **Third row:** J. Boker, R. Mohawk, W. Coutier, D. Olson, M. Herrick, R. Kodlec.

The Huddle



Features





Going someplace, Bob ?



Bottlenecks of 1949



The pause that refreshes



Time out



Great day



Ladies Aid



Royalty



Cold?



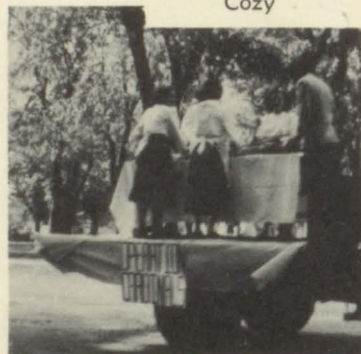
Cozy



Watch the birdie



Brrrr!



Homecoming



Before the game



Cousins



Cute



Love somebody



Locker Room?



More Homecoming



The Half



Posing?



What o life!



Fire Drill



Smile, please



Boys' Dorm



Acting natural



K. P.



Kermie



Lowell



Bernie

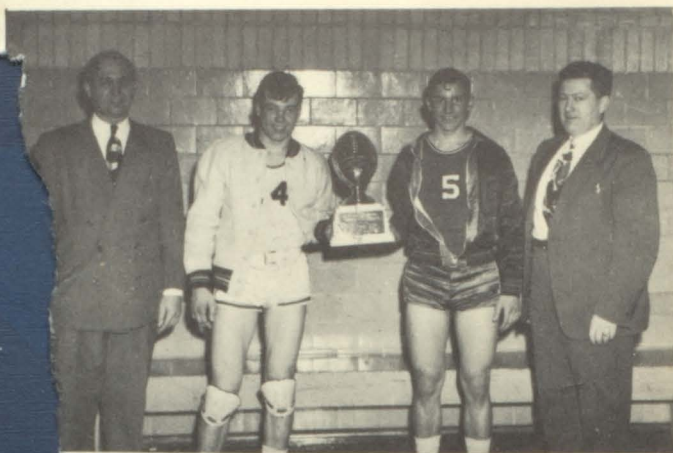


Sisters



Tune Up

We Got It!



Too Man

Future Soloist



REAL
cute

Professional Directory

T. A. Clifton, M. D.

C. J. Healy, D. D. S.

M. J. Ohlrogg, Atty.

H. M. Skaug, M. D.

O. W. Hauck, D. D. S.

C. T. Perkins, Atty.

Chatfield Motor Co.

Sales — Chevrolet — Service

Allis Chalmers

D-X

Lubricating Motor Fuel

and Motor Oil

Chatfield, Minn.

Phone 25

Gamble's

"The Family Store"

Chatfield

Hotel

Chatfield Implement & Transfer Co.

Case Machinery G. M. C. Trucks

Tel. 193

KAISER-FRAZER CARS

We Specialize in
Long Distance Hauling

We Buy and Sell Livestock

Gopher Recreation

Billiards

Bowling

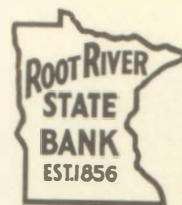
Pop

Hamburgers

Ice Cream

N. I. Nelson, Prop.

MEMBER FEDERAL RESERVE



**MEMBER FEDERAL DEPOSIT
INSURANCE CORPORATION**

Security Mutual Fire Insurance Co.

Home Office: Chatfield, Minn.

A Legal Reserve Company

"Serving Since 1898"

Annual Savings to Policyholders

Interstate Power Co.

Chatfield

Minnesota

P. H. LAIVELL

Clothing
Gent's Furnishings — Shoes
Allied Clothing

Phone 21

Chatfield

Congratulations!

REX CAFE

"Where the Gophers Go"

The Browns

Our Own Hardware

Hardware and Supplies
Johnson Outboard Motors

Lynch's

PANTRY GROCERY

Groceries, Fruits and Meats
Open Evenings and Sundays

Phone 241
Mr. and Mrs Paul Wurtzler

Compliments of

The Chatfield Dairy

Owner, Verne L. Taylor

NAGEL GARAGE

General Repair — Wrecker Service
Ford Sales and Service
Phone 102-R

Hervey Implement Co.

Farm Machinery
PLYMOUTH and DESOTO
Motor Trucks
Home Appliances

Halloran's Co-op Service

Tires

Batteries

Appliances

Washing — Greasing

Tire Repairing

Capitol Theatre

**All the Products
from**

M-G-M—PARAMOUNT

WARNER BROS.

20TH CENTURY FOX

R.K.O. and United Artists

**Compliments of
Miss Anna Manahan**

Postmaster

Chatfield, Minnesota



**"May Each of You Achieve
Ultimate Success"**

Erdman's Grocery

Self-Serve — Cash-Carry

**Complete Line of Meats, Fruits
and Groceries**

Kasson

Chatfield

Stewartville

Mantorville

Minneapolis Moline

Sales and Service

Phone 38

Dwaine Egge

Chatfield, Minn.

Silver Grill Cafe

Meals

Lunches

Fountain Service

No Beer

Mr. and Mrs. G. M. Mossing

Compliments of

Northwestern Bell

Telephone Co.

John Manahan Co.

Grain, Flour, Feed and Coal
Minnesota Machinery and Twine

The House of Time

Diamonds — Jewelry — Silverware
Dependable Watches and Repairing

Conrad E. Brekke, Jeweler

Dietz and Luedtke Barber Shop

First Class Work
First, Last and Always

Wartham Body Shop

Pure Oil Station
Wrecker Service

Phone 298 Chatfield

SISSON'S

Offers Most for Your Money
Every Day
Groceries Meats
Vegetables

The Chatfield News

Your Home Town Newspaper
Merlin Matzke, Publisher
"90 Years of Service
to Chatfield"

"It's Not That We Know More. It's
the Quality We Use."

PETE'S BAKERY

Chatfield, Minnesota



OLSON IMPLEMENT

Sales and Services
Phone 331

Kivell Hardware

Your Complete Hardware
Store

Satisfaction Guaranteed

Phone 80

Chatfield

Coast-to-Coast Store

Auto Supplies — Radios
Paints — Hardware
Sporting Goods

R. M. Finstuen, Owner
Phone 88

Northwest

Underwriters, Inc.

Thurber — Lake — Strange
Chatfield, Minnesota

Preferred Rates
for
Preferred Risks

Phone 50-R

Courtesies of

Chatfield Cleaners

Phone

130

For Better Foods

WIEDENHEFT'S

Super Food Store

Phone 181

Chatfield

Boetzer and Martin

FURNITURE
and
FUNERAL SERVICE

**Chatfield Variety
Store**

Candy and Gifts
Everyday Needs

W. G. Cles

**Richter Drug
Company**

The Corner Store
Drugs — Prescriptions — School
Supplies — Livestock Remedies
Phone 81

Autographs

Autographs of the members of the

Autograph Club of the

Autograph Club of the

Autograph Club of the

Autograph Club of the

Autograph Club of the

Autograph Club of the

Autograph Club of the

Autograph Club of the

Autograph Club of the

Autograph Club of the

Autograph Club of the

Autograph Club of the

Autograph Club of the

Autograph Club of the

Autograph Club of the

Autograph Club of the

Autograph Club of the

Autograph Club of the

Autograph Club of the

Autograph Club of the

Autograph Club of the

Autograph Club of the

Autograph Club of the

Autograph Club of the

Autograph Club of the

Autograph Club of the

Autograph Club of the

Autograph Club of the

Autograph Club of the

Autograph Club of the

Autograph Club of the

Autograph Club of the

Autograph Club of the

Autograph Club of the

Autograph Club of the

Autograph Club of the

Autograph Club of the

