

TOKAY HIGH SCHOOL - NEW GYM BUILDING

1111 W, CENTURY BLVD
LODI, CALIFORNIA 95240

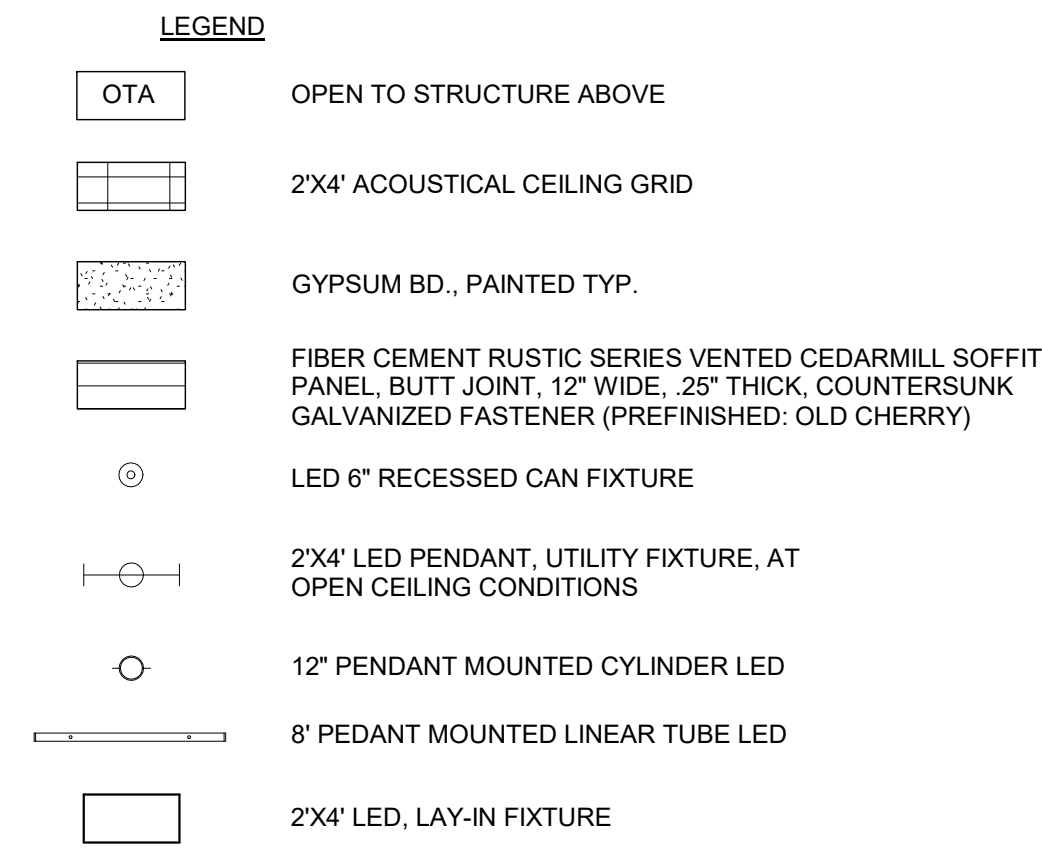


FOR REFERENCE ONLY

SHEET INDEX		
ISSUE DATE	SHEET NUMBER	SHEET NAME
GENERAL		
1/7/19	G0.0	TITLE SHEET
ARCHITECTURE		
1/7/19	A2.20	FLOOR PLAN
1/7/19	A2.40	REFLECTED CEILING PLAN
1/7/19	A2.50	ROOF PLAN
1/7/19	A3.10	EXTERIOR ELEVATION
1/7/19	A3.20	BUILDING SECTION
1/7/19	A5.01	INTERIOR ELEVATIONS
1/7/19	A5.02	INTERIOR ELEVATIONS
TECHNOLOGY		
1/7/19	T1.01	TECHNOLOGY SYMBOL SHEET
1/7/19	T2.02	TECHNOLOGY GYM

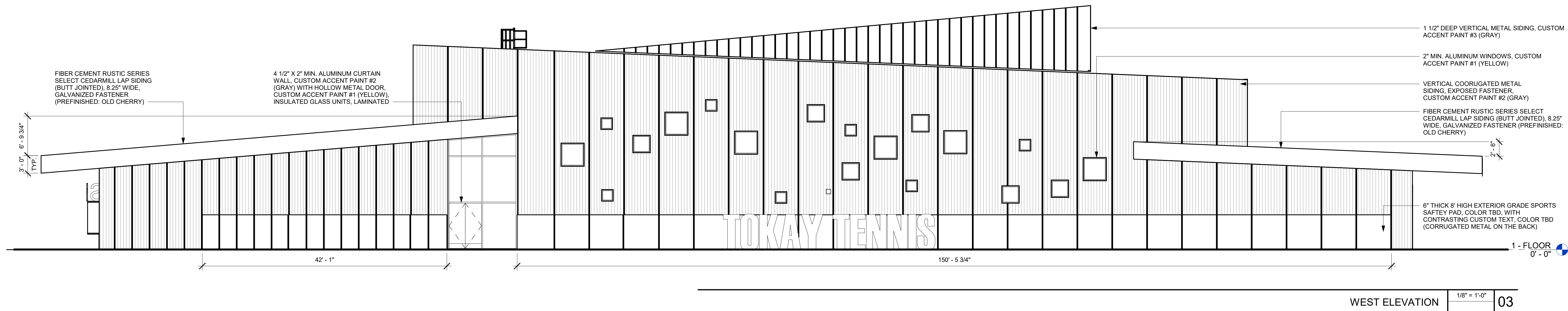
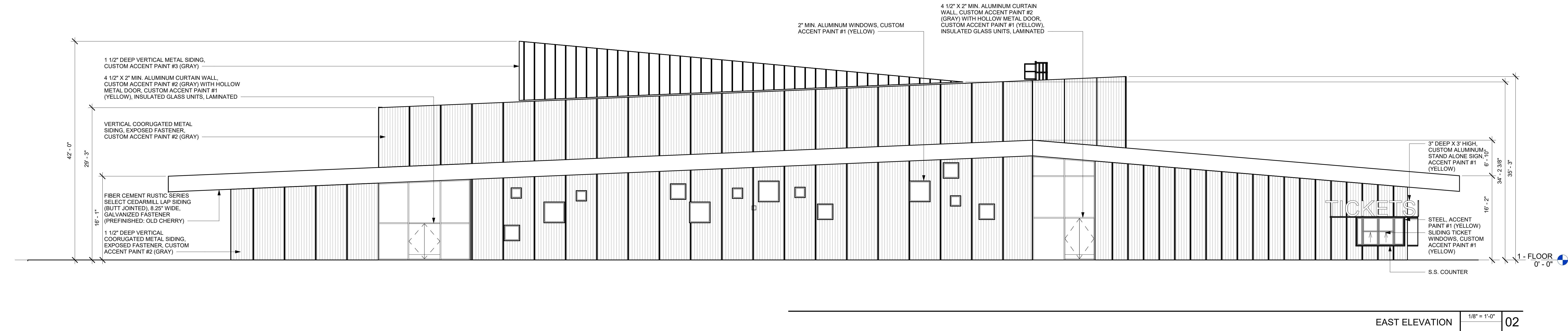
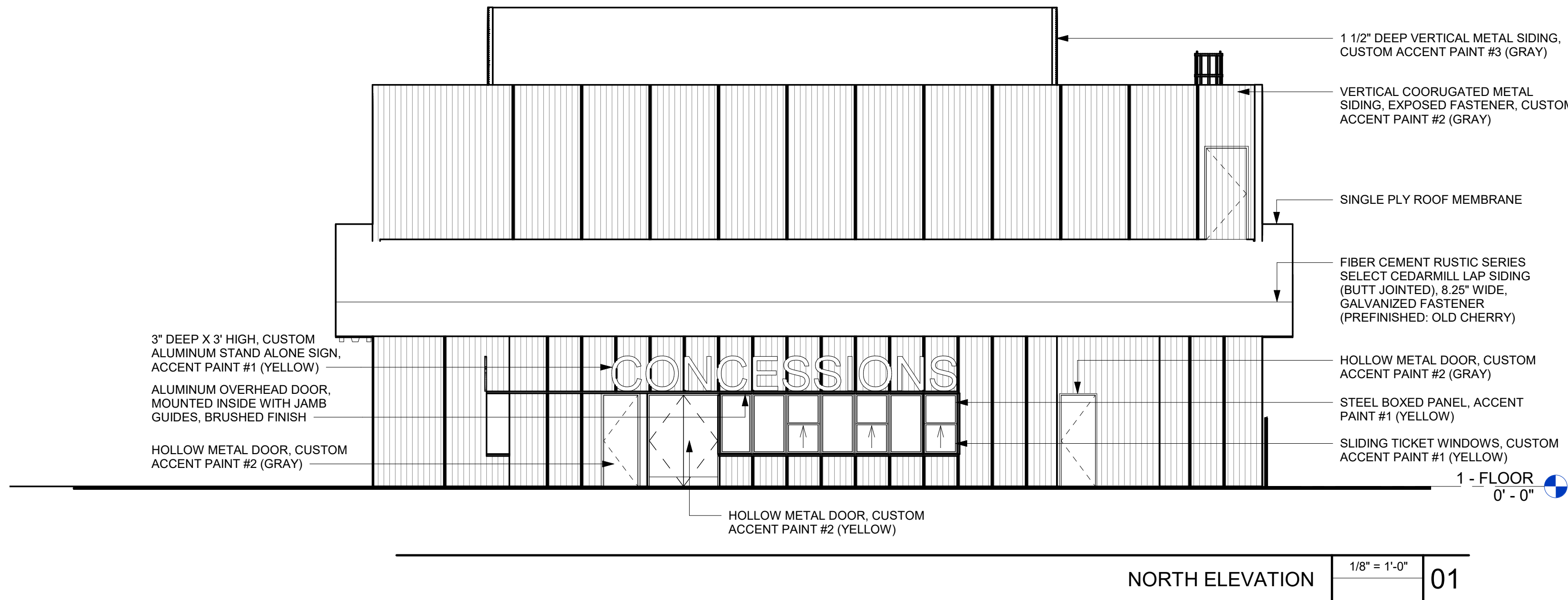
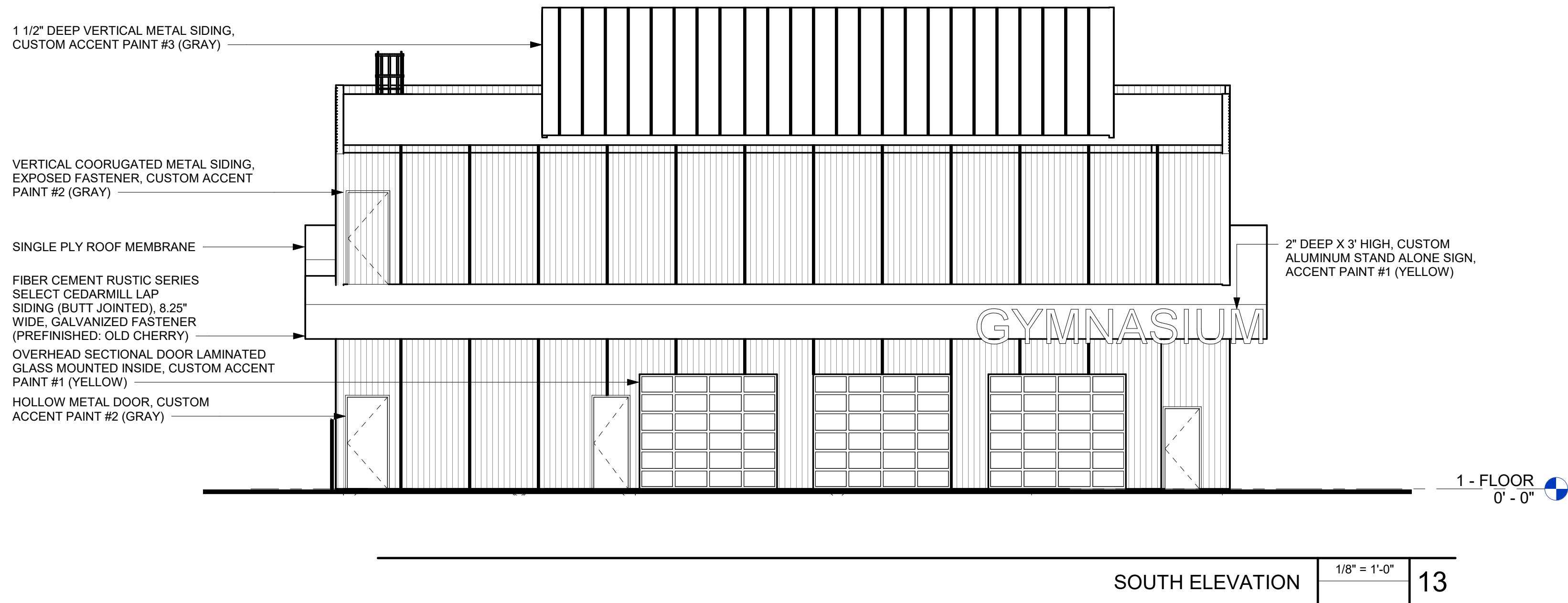
ADDITIVE ALTERNATES
#1 PROVIDE MECHANICALLY GRINDED POLISHED CONCRETE (LOBBY, TEAM ROOM 1, TEAM ROOM 2), GRADE A - LIGHT SAND (CREAM); POLISHING ONLY THE PORTLAND CEMENT PASTE AT THE SURFACE WITHOUT EXPOSING SMALL, MEDIUM, OR LARGE AGGREGATES. DYES ARE NOT ALLOWED AS AN ACCEPTABLE LEVEL OF GRINDING. LEVEL 2 SHEEN: SATIN FINISH (MODERATE GLOSS) AS DETERMINED BY A GLOSS READING OF 11-25 (150 GRIT METAL BONDED DIAMONDS, 50, 120, 220, 400 GRIT RESIN DIAMONDS). TWO COATS OF HARDENER COEFFICIENT OF FRICTION 0.6 MINIMUM.
#2 MECHANICAL SCREEN ON LOWER ROOF AT EACH END OF THE PRACTICE GYM ROOM.





01

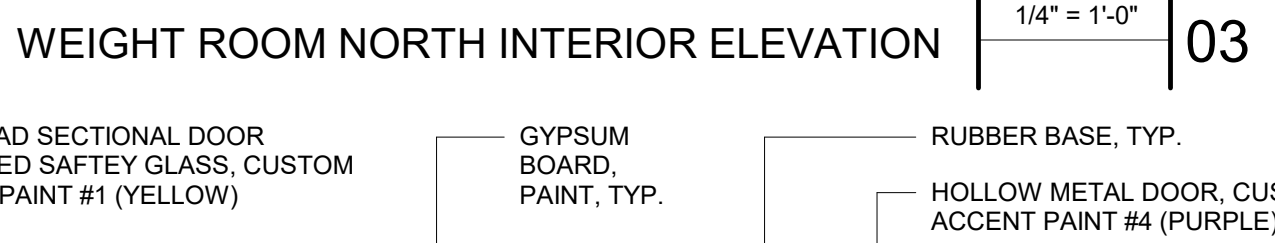
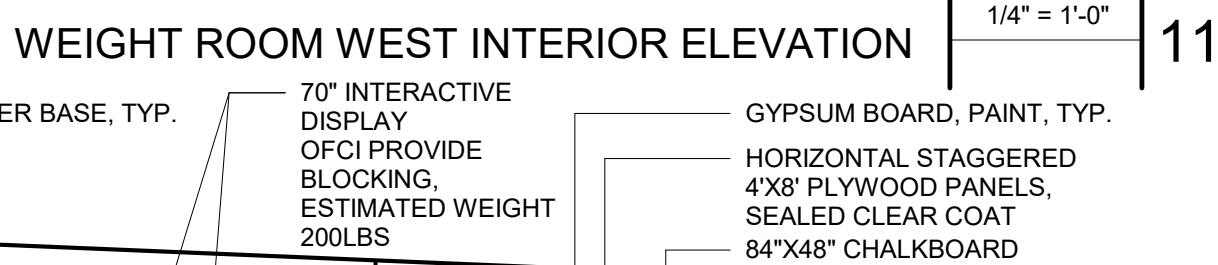
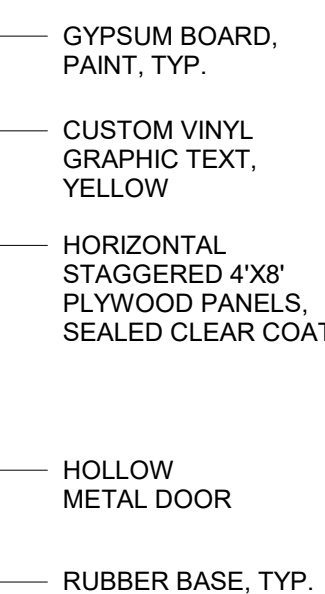
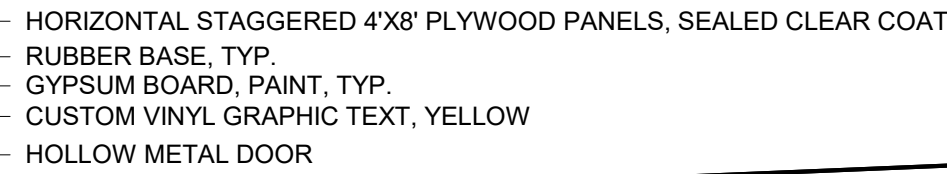
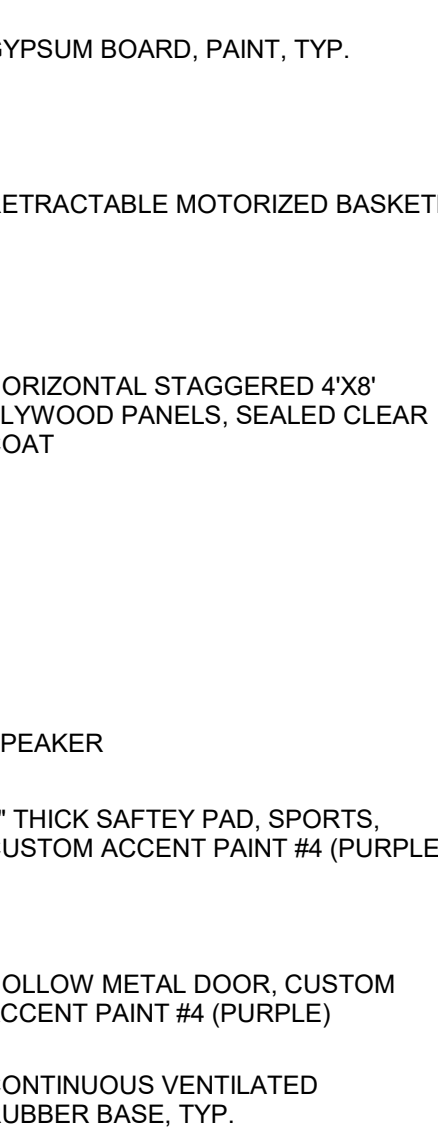
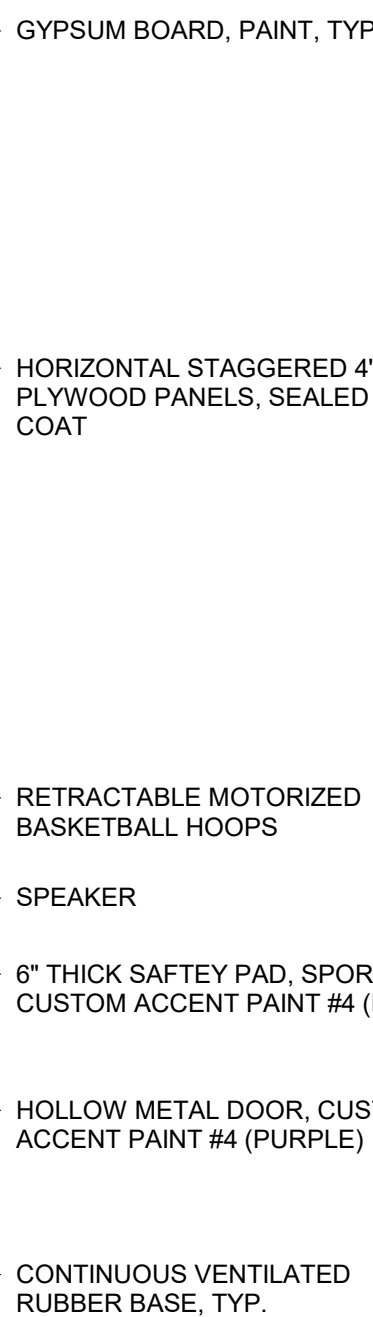
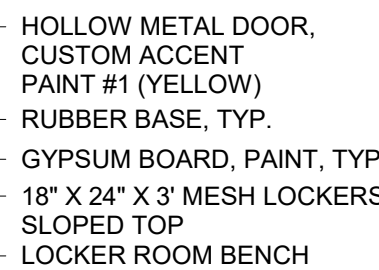
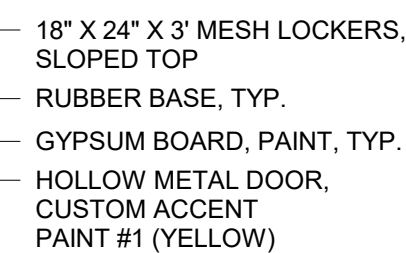
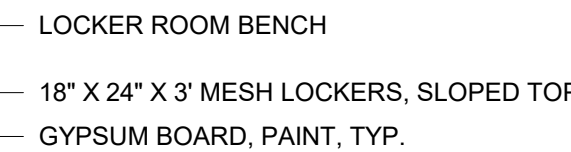
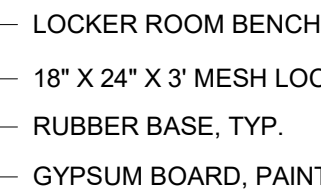


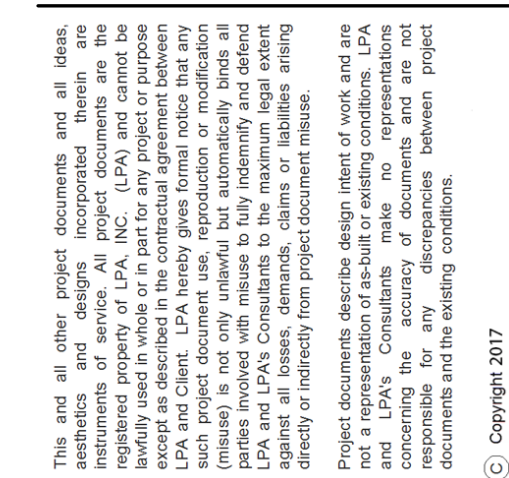


EXTERIOR MATERIALS

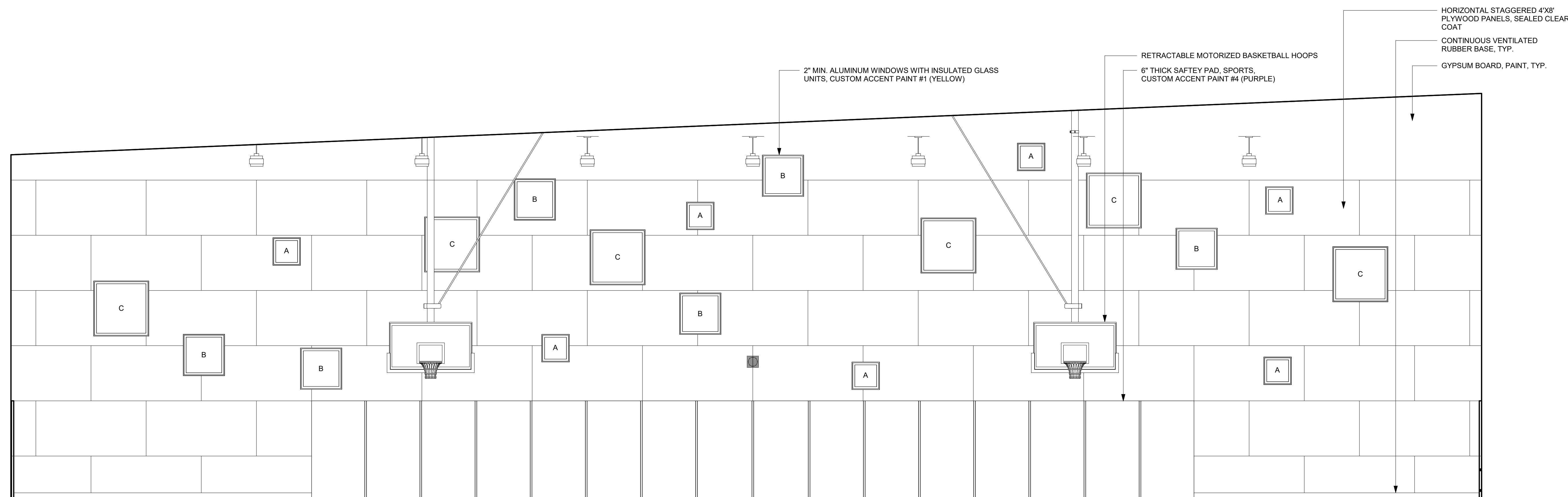
- WALLS**
- VERTICAL COORUGATED METAL SIDING, EXPOSED FASTENER, CUSTOM ACCENT PAINT #2 (GRAY)
 - 1 1/2" DEEP VERTICAL METAL SIDING, EXPOSED FASTENER, CUSTOM ACCENT PAINT #3 (GRAY)
- FASCIA**
- FIBER CEMENT RUSTIC SERIES SELECT CEDARMILL LAP SIDING (BUTT JOINTED), 8.25" WIDE, GALVANIZED FASTENER (PREFINISHED: OLD CHERRY)
- WINDOWS/DOORS**
- 4 1/2" X 2" MIN. ALUMINUM STOREFRONT, CUSTOM ACCENT PAINT #2 (GRAY) WITH HOLLOW METAL DOOR, CUSTOM ACCENT PAINT #1 (YELLOW)
 - 2" MIN. ALUMINUM WINDOWS, CUSTOM ACCENT PAINT #1 (YELLOW)
 - OVERHEAD SECTIONAL LAMINATED GLASS DOORS, CUSTOM ACCENT PAINT #1 (YELLOW)
 - HOLLOW METAL DOOR, CUSTOM ACCENT PAINT #2 (GRAY)
 - HOLLOW METAL DOOR, CUSTOM ACCENT PAINT #1 (YELLOW)
 - SLIDING TICKET WINDOWS, CUSTOM ACCENT PAINT #1 (YELLOW)



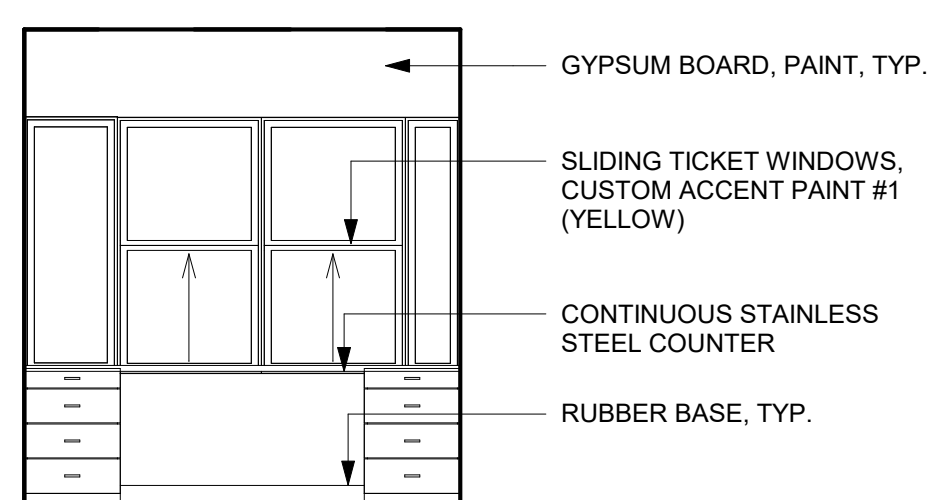


[illegible][illegible]

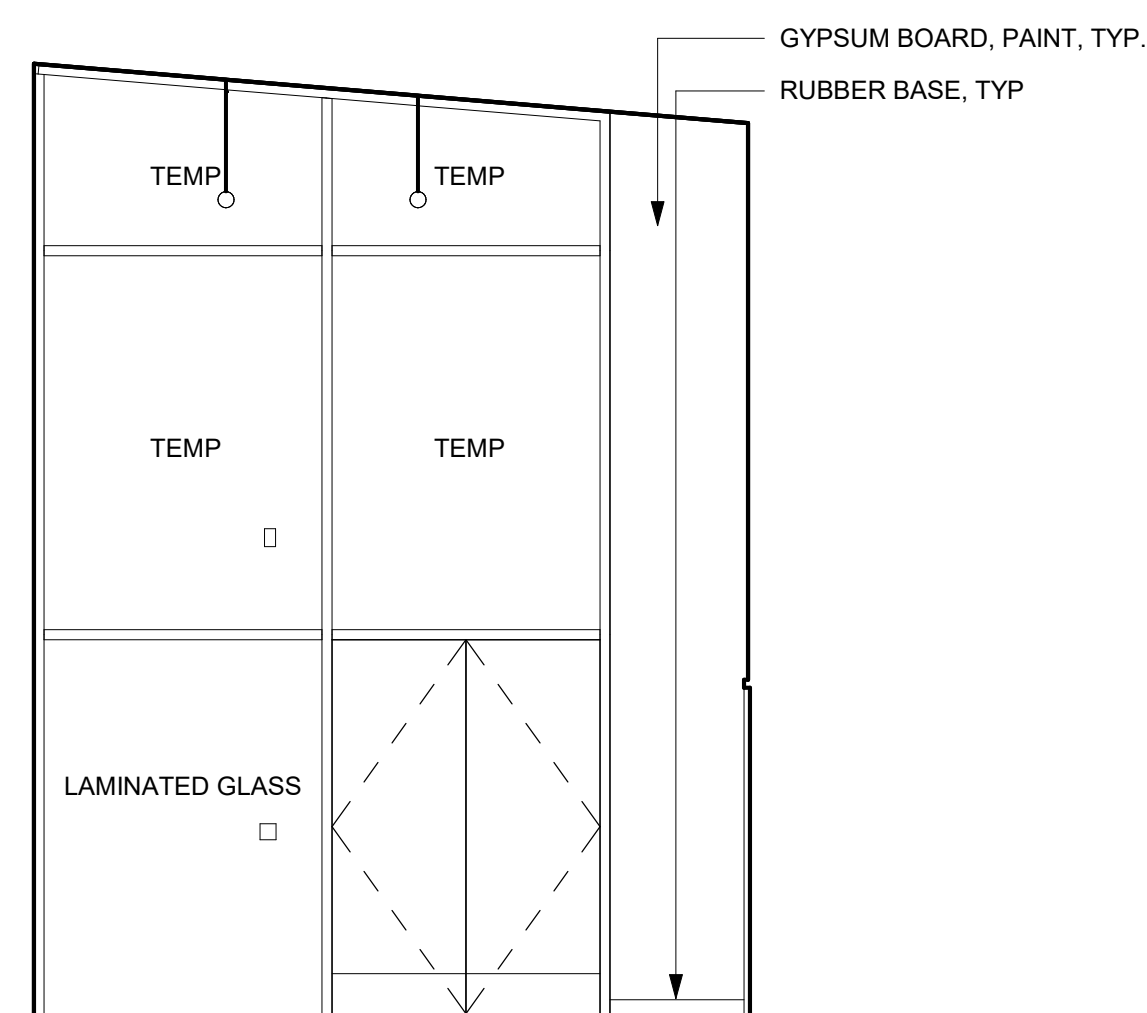
Job. No.	1818010
Date	JAN 07, 2019
Checked by	Checker
Scale	1/4" = 1'-0"



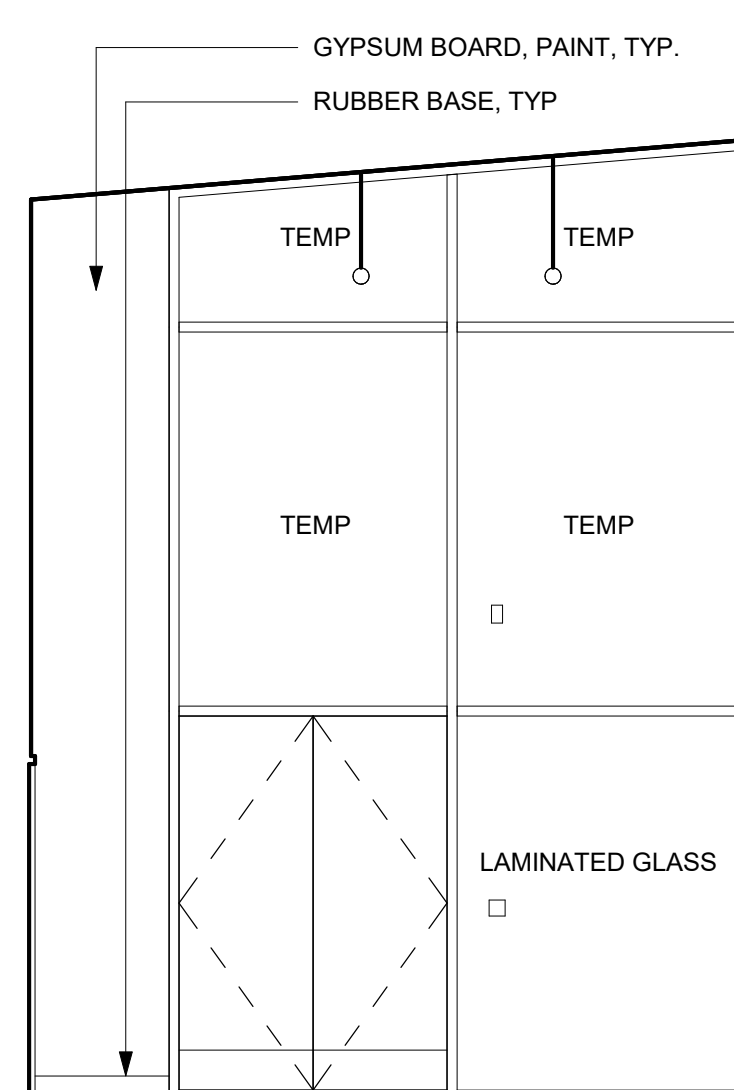
PRACTICE GYM WEST INTERIOR ELEVATION	1/4" = 1'-0"	01
--------------------------------------	--------------	----



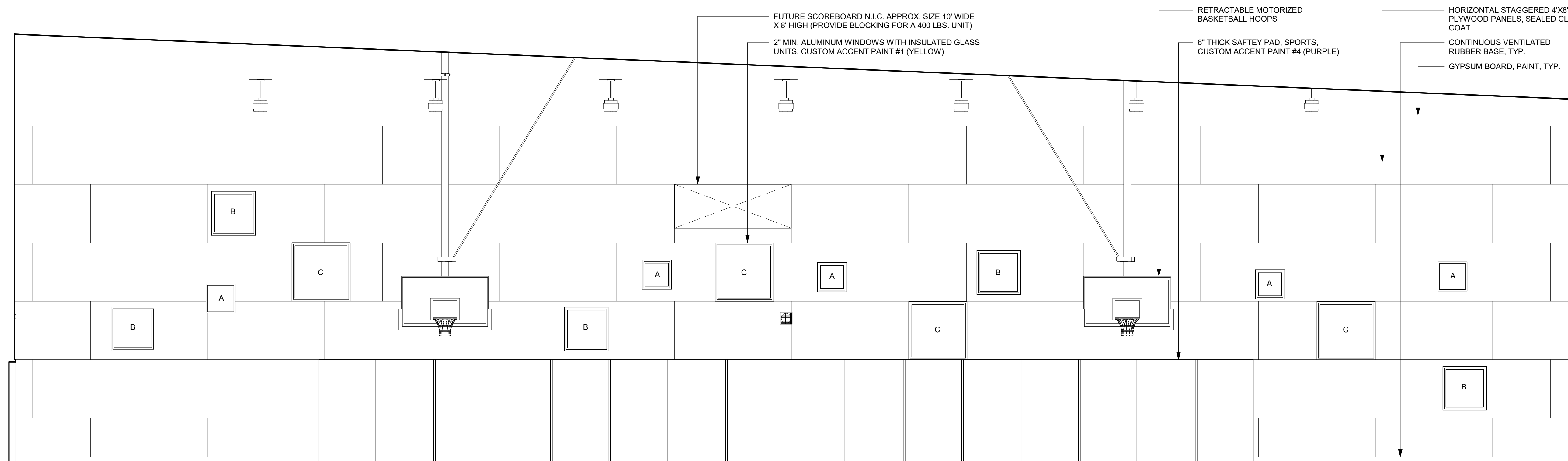
TICKET OFFICE	$1/4" = 1'-0"$	4
---------------	----------------	---



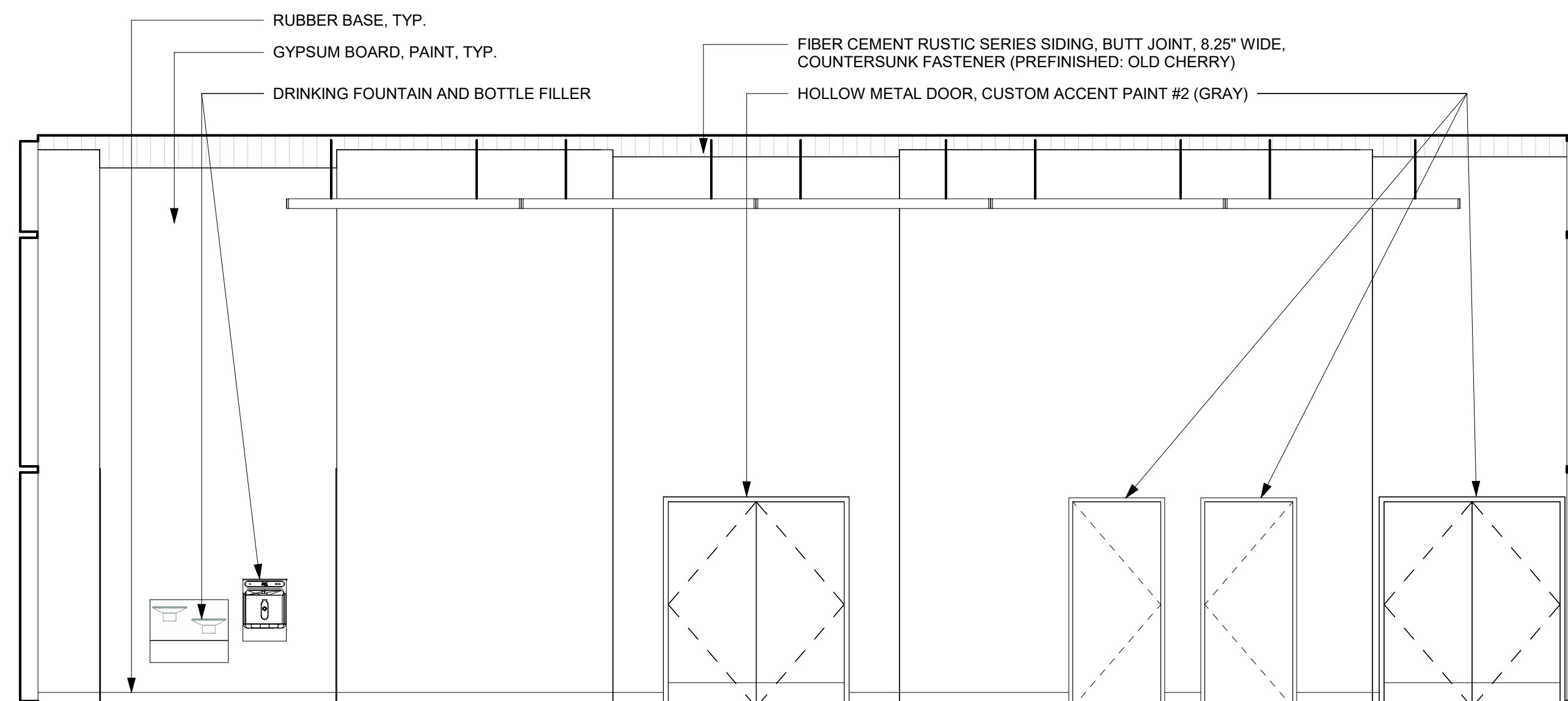
LOBBY WEST INTERIOR ELEVATION	1/4" = 1'-0"	23
-------------------------------	--------------	----



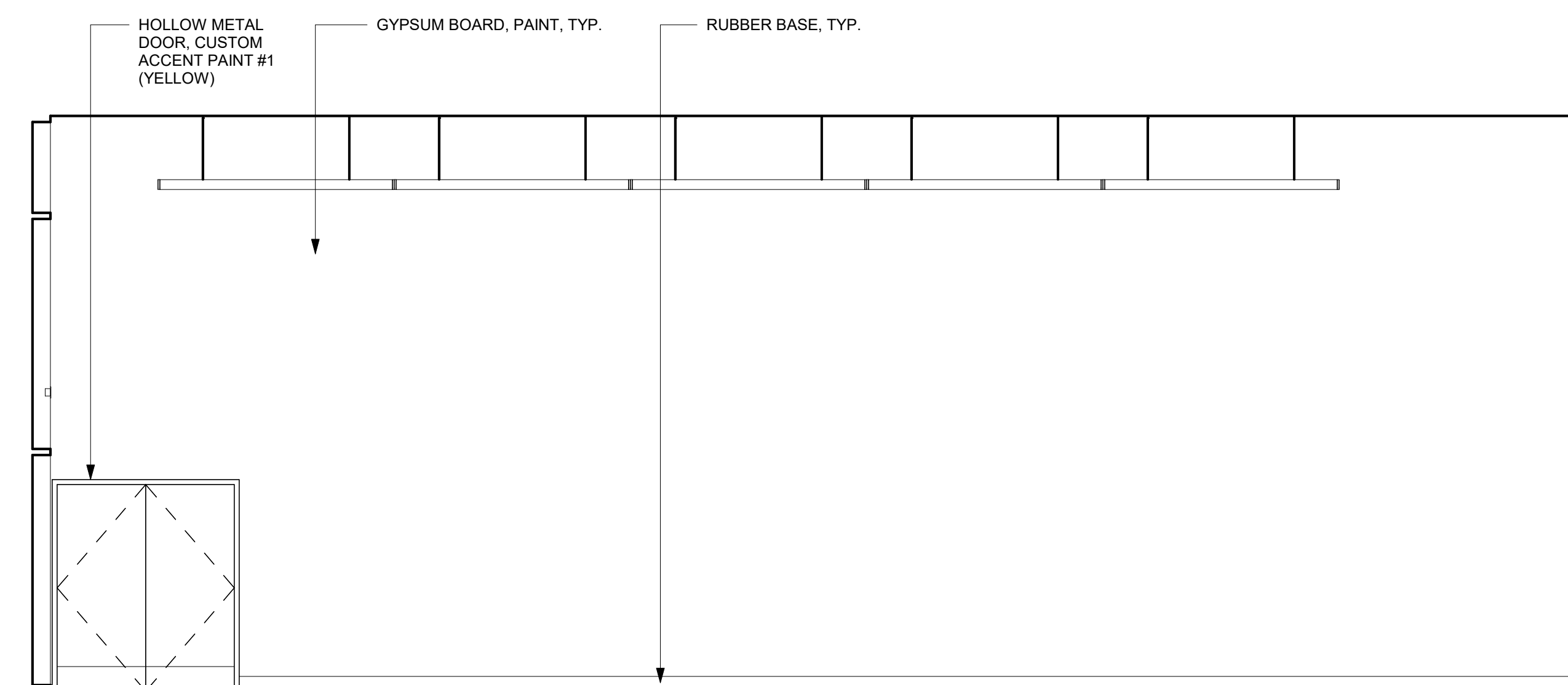
LOBBY EAST INTERIOR ELEVATION	1/4" = 1'-0"	24
-------------------------------	--------------	----



PRACTICE GYM EAST INTERIOR ELEVATION	1/4" = 1'-0"	02
--------------------------------------	--------------	----



LOBBY NORTH INTERIOR ELEVATION	1/4" = 1'-0"	12
--------------------------------	--------------	----



LOBBY SOUTH INTERIOR ELEVATION	1/4" = 1'-0"	03
--------------------------------	--------------	----

ABOVE FINISHED COUNTER TOP
ABOVE FINISHED FLOOR
ABOVE FINISH GRADE
ACCESS POINT
ARCHITECTURAL
AMERICAN WIRE GAUGE
AUDIO VISUAL

BACK BONE

CONDUIT
CATEGORY
CONTRACTOR FURNISHED OWNER INSTALLED
CONTRACTOR FURNISHED CONTRACTOR INSTALLED
CENTERLINE
CIRCUIT
CEILING
CABLE TRAY
COPPER

AFc	ABOVE FINISHED COUNTER TOP
AFf	ABOVE FINISHED FLOOR
AFg	ABOVE FINISH GRADE
AP	ACCESS POINT
ARCH	ARCHITECTURAL
AWG	AMERICAN WIRE GAUGE
AV	AUDIO VISUAL
BB	BACK BONE
C	CONDUIT
CAT	CATEGORY
CFOI	CONTRACTOR FURNISHED OWNER INSTALLED
CFPI	CONTRACTOR FURNISHED CONTRACTOR INSTALLED
CK	CENTERLINE
CKT	CIRCUIT
CLG	CEILING
CT	CABLE TRAY
CU	COPPER

(E)	EXISTING TO REMAIN
EC	EMPTY CONDUIT
EF	ENTRANCE FACILITY
EG	EQUIPMENT GROUND
ELEC	ELECTRICAL
ELEV	ELEVATOR
EMT	ELECTRICAL METALLIC TUBING
EV	ELECTRIC VEHICLE
FA	FIRE ALARM
FACP	FIRE ALARM ANNUNCIATOR PANEL
FACF	FIRE ALARM CONTROL PANEL
FATC	FIRE ALARM TERMINAL CABINET
FARF	FIRE ALARM REMOTE ANNUNCIATOR
FB	FLOOR BOX
FCB	FIRE ALARM CONTROL AND INDICATING PANEL
FO	FIBER OPTIC
FOC	FIBER OPTIC CABLE

GFCI	GROUND FAULT CIRCUIT INTERRUPTING
G, GND	GROUND
HT	HEIGHT
IT	INFORMATION TECHNOLOGY
IDF	INTERMEDIATE DISTRIBUTION FACILITY

MDF	MAIN DISTRIBUTION FRAME
MECH	MECHANICAL
MFG	MANUFACTURER
MM	MULTI-MODE
MPOE	MAIN POINT OF ENTRANCE
MTG	MOUNTING

NEC	NATIONAL ELECTRICAL CODE
NEMA	NATIONAL ELECTRICAL MANUFACTURERS ASSOCIATION
NTS	NOT TO SCALE

OFCI	OWNER FURNISHED CONTRACTOR INSTALLED
OFOI	OWNER FURNISHED OWNER INSTALLED
OSP	OUTSIDE PLANT

PAS	PUBLIC ADDRESS SYSTEM (PAGING)
PB	PULL BOX
Ø, PH	PHASE
PNL	PANEL
POS	POINT OF SALE
PP	PATCH PANEL
PR	PAIR
PRT	PORT
PVC	POLYVINYL CHLORIDE CONDUIT
PWR	POWER
RIO	ROUGH IN ONLY
SLV	SLEEVE
SM	SINGLE MODE
RMC	RIGID METAL CONDUIT

SCS	STRUCTURED CABLING SYSTEMS
SMH	SPECIAL MOUNTING HEIGHT
SPEC	SPECIFICATION
SYS	SYSTEM





TEL	TELEPHONE
TELE	TELECOMMUNICATIONS
TGB	TELECOMMUNICATIONS GROUNDING BUS BAR
TGMB	TELECOMMUNICATIONS MAIN GROUNDING BUS BAR
TP	TAMPER PROOF
TR	TELECOMMUNICATIONS ROOM
TYP	TYPICAL
TV	TELEVISION

V	VOICE
VC	VOLUME CONTROL














UON UNLESS OTHERWISE NOTED
UPB UNDERGROUND PULL BOX

W	WALL
WAP	WIRELESS ACCESS POINT
WP	WEATHERPROOF



	BACK BOX	MTG. HT. TO CL	POWER
	G	15' AFF. UON	N/A
(1)	PER MFG. SPEC.	CEILING	N/A
	PER MFG. SPEC.	46" AFF	N/A
N	PER MFG. SPEC.	PER VENDOR DETAIL	N/A

SYMBOLS	INTERCOM, PAGING SYMBOLS	BACK BOX	MTG. HT. TO CL.	POWER
	FLUSH WALL MOUNTED PAGING SPEAKER	G	15" AFF. UON	N/A
	CEILING MOUNTED PAGING SPEAKER, INSTALL (1) CATEGORY 6 CABLE.	PER MFG. SPEC.	CEILING	N/A
	VOLUME CONTROL	PER MFG. SPEC.	46" AFF	N/A
 (I)	INTERCOM STATION, (D)=DOOR STATION (M)=MASTER STATION (S)=SUBMASTER STATION	PER MFG. SPEC.	PER MFG. SPEC.	PER MFG. SPEC. DETAIL

PROVIDE 1" CONDUIT STUB-UP WITH BUSHING 6" ABOVE ACCESSIBLE CEILING UON

SYMBOLS	SECURITY SYMBOLS	BACK BOX	MTG HT. TO CL.	POWER
	WALL MOUNTED MOTION DETECTOR	PER MFG. SPEC.	10' AFF	N/A
	CEILING MOUNTED MOTION DETECTOR	PER MFG. SPEC.	FINISHED CEILING	N/A
	KEYPAD	PER MFG. SPEC.	46" AFF	N/A
	INTRUSION SECURITY HORN	PER MFG. SPEC.	11" AFF	N/A
	CARD READER, INSTALL (1) 3/4" CONDUIT STUB UP 6" ABOVE ACCESSIBLE CEILING SPACE.	A	46" AFF	N/A
	CARD READER LOCK	PER MFG. SPEC.	PER VENDOR DETAIL	N/A
	EMERGENCY HELP PUSHBUTTON	B	46" AFF	N/A
	EMERGENCY HELP BUTTON ANNUNCIATOR	PER MFG. SPEC.	46" AFF	N/A
	DOORBELL PUSHBUTTON	PER MFG. SPEC.	46" AFF	N/A
	PANIC BUTTON	PER MFG. SPEC.	SEE PLANS	N/A
	DOOR CONTACT ALARM SENSOR, COORDINATE WITH DOOR HARDWARE, PROVIDE PATHWAY TO DOOR JAMB	PER MFG. SPEC.	PER VENDOR DETAIL	N/A
	CARD READER WITH KEYPAD	PER MFG. SPEC.	PER VENDOR DETAIL	N/A
	CCTV CAMERA, INSTALL (1) CATEGORY 6 CABLE	G	9' AFF, UNDER SOFFIT, UNO	PER MFG. SPEC.

PROVIDE 1" CONDUIT STUB-UP WITH BUSHING 6" ABOVE ACCESSIBLE CEILING UON

SYMBOLS	CLOCK SYMBOLS	BACK BOX	MTG. HT. TO CL	POWER
	DIGITAL IP CLOCK: (1) CATEGORY 6 CABLE.	PER MFG. SPEC.	8" AFF	N/A
	BATTERY CLOCK OPERATED OFCI PART NO. E56BAGD304BF-118. PAS SPEAKER (1) CATEGORY 6 CABLE. INSTALL (1) "C" CONDUIT TO ACCESSIBLE CEILING SPACE	PER MFG. SPEC.	8" AFF	N/A

PROVIDE 1" CONDUIT STUB-UP WITH BUSHING 6" ABOVE ACCESSIBLE CEILING UON

REFERENCE	TECHNOLOGY SYSTEMS BACKBOX LEGEND
A	RACO #6995 OR EQUAL: 1-GANG BACKBOX, 3-3/4" HIGH, 1-3/32" WIDE & 3-1/2" DEEP.
B	RACO #6996 OR EQUAL: 2-GANG BACKBOX, 3-3/4" HIGH, 3-3/8" WIDE & 4-1/2" DEEP.
C	RACO #6997 OR EQUAL: 3-GANG BACKBOX, 3-3/4" HIGH, 5-19/32" WIDE & 3-1/2" DEEP.
D	RACO #6998 OR EQUAL: 4-GANG BACKBOX, 3-3/4" HIGH, 7-1/32" WIDE & 3-1/2" DEEP.
E	RACO #6999 OR EQUAL: 5-GANG BACKBOX, 3-3/4" HIGH, 9-7/32" WIDE & 3-1/2" DEEP.
F	STEEL CITY #72171 OR EQUAL: 4-1/16" HIGH, 4-1/16" WIDE & 2-1/8" DEEP.
G	STEEL CITY WITH STEEL CITY #772-C 1X SINGLE DIE CAST ALUMINUM COVER.
H	RANDAL #78B-50657: 5 IN. SQUARE X 2.675 IN. DEEP METAL TELECOM BRACKET BOX RANDAL #78B-51024: 5 IN. SQUARE X 2.675 IN. DEEP METAL TELECOM BRACKET BOX
J	SPIDER BOX AFB-501 & GANG FLOOR BOX. PROVIDE (1) 1-1/2" CONDUITS FOR LOW VOLTAGE SYSTEMS CABLEING.

ALL SYMBOLS ARE NOT NECESSARILY SHOWN ON DRAWINGS.

COMMUNICATION AND ELECTRICAL CONTRACTORS TO CONFORM TO STATE AND LOCAL CODES FOR THE ROUGH-IN AND INSTALLATION OF COMMUNICATION SYSTEMS. THIS INCLUDES, BUT NOT LIMITED TO, MEETING CODES CONCERNING CONDUIT, CABLE (PLENUM OR NON-PLENUM), CABLE INSTALLATION, DEVICE LOCATIONS, WALL PENETRATIONS, AND FIREPROOFING SLEEVES AND CONDUITS.

ELECTRICAL CONTRACTOR TO CONFIRM ALL ROUGH-IN, AND EQUIPMENT LOCATION REQUIREMENTS WITH THE COMMUNICATION CONTRACTOR.

- ALL SYMBOLS ARE NOT NECESSARILY SHOWN ON DRAWINGS.

 2. COMMUNICATION AND ELECTRICAL CONTRACTORS TO CONFORM TO STATE AND LOCAL CODES FOR THE ROUGH-IN AND INSTALLATION OF COMMUNICATION SYSTEMS. THIS INCLUDES, BUT NOT LIMITED TO, MEETING CODES CONCERNING CONDUIT, CABLE (PLENUM OR NON-PLENUM), CABLE INSTALLATION, DEVICE LOCATIONS, WALL PENETRATIONS, AND FIREPROOFING SLEEVES AND CONDUITS.
 3. ELECTRICAL CONTRACTOR TO CONFIRM ALL ROUGH-IN, AND EQUIPMENT LOCATION REQUIREMENTS WITH THE COMMUNICATION CONTRACTOR.
 4. GENERAL CONTRACTOR TO COORDINATE STRUCTURAL MOUNTING REQUIREMENTS WITH COMMUNICATION CONTRACTOR. THIS INCLUDES, BUT IS NOT LIMITED TO, CEILING, WALL, AND FLOOR MOUNTED EQUIPMENT.
 5. GENERAL CONTRACTOR TO COORDINATE INSTALLATION SCHEDULE WITH COMMUNICATION CONTRACTOR.
 6. COMMUNICATION CONTRACTOR TO RECEIVE AND STORE ALL EQUIPMENT AND MATERIALS AND DELIVER THEM TO THE CONSTRUCTION SITE ON A JUST-IN-TIME BASIS. PROVIDER PROVIDES COMMUNICATIONS EQUIPMENT THAT NEEDS TO REMAIN ON-SITE.
 7. ELECTRICAL CONTRACTOR TO PROVIDE AND INSTALL GROUNDING AND BONDING SYSTEM IN COMMUNICATION EQUIPMENT ROOMS AND IT EQUIPMENT SERVER ROOMS. USE A MINIMUM #6 AWG STRANDED COPPER BONDING CONDUCTOR TO BE INSTALLED AROUND THE PERIMETER OF THESE ROOMS.
 8. BACKBOX REQUIREMENTS ARE FOR PLANNING PURPOSES ONLY. GENERAL CONTRACTOR TO COORDINATE ACTUAL BACKBOX REQUIREMENTS WITH VENDOR SHOP DRAWINGS.
 9. COORDINATE WITH ARCHITECTURAL ELEVATIONS.
 10. CONDUITS TO: (a) CONTAIN NO CONTINUOUS SECTIONS LONGER THAN 30M (98 FT.), AND (b) CONTAIN NO MORE THAN (2) 90° BENDS OR (1) REVERSE BEND WITHOUT INSTALLING A PULLBOX. CONDUITS IN PLACE OF PULLBOXES ARE UNACCEPTABLE.
 11. CONDUITS TO CONTAIN PLASTIC OR NYLON PULL TAPE RATED AT 200 LBS. WITH A MINIMUM OF 5 FEET OF EXTRA PULL TAPE COILED AT EACH END.
 12. CONDUIT BEND RADIUS TO BE (a) A MINIMUM OF 6 TIMES THE INTERNAL CONDUIT DIAMETER FOR CONDUITS 2" IN DIAMETER OR LESS, AND, (b) 10 TIMES THE INTERNAL CONDUIT DIAMETER FOR CONDUITS MORE THAN 2" IN DIAMETER.
 13. TERMINATE CONDUITS AND SLEEVES THAT PROTRUDE THROUGH STRUCTURAL FLOORS 2'-3" ABOVE FLOOR SURFACE.
 14. INSTALL BUSHINGS AND BELL ENDS ON CONDUITS, AS REQUIRED .
 15. FLEX CONDUIT IS GENERALLY UNACCEPTABLE FOR USE AS COMMUNICATIONS CONDUIT EXCEPT AT SEISMIC JOINTS AND AS APPROVED IN WRITING BY ENGINEER.
 16. SLAB OR IN-SLAB CONDUITS TO BE INSTALLED IN A MANNER THAT PREVENTS WATER INFILTRATION OF CONDUIT. IT IS CONTRACTOR'S RESPONSIBILITY TO ENSURE GROUND WATER, RAIN WATER OR CONSTRUCTION WATER IS PREVENTED FROM ENTERING AND/OR REMOVED FROM THE CONDUITS PRIOR TO PLACEMENT OF COMMUNICATIONS CABLES. SEE SITE UTILITY PLAN NOTES FOR ADDITIONAL UNDERGROUND COMMUNICATIONS CONDUIT SEALING REQUIREMENTS.
 17. PULLBOXES TO BE SIZED AND INSTALLED PER ANSITIA 569C. PULLBOXES FOR UNDER FLOOR CONDUIT RUNS ARE NOT PERMITTED UNLESS OTHERWISE NOTED. PULLBOXES FOR OVER-HEAD CONDUIT RUNS TO BE LOCATED ABOVE ACCESSIBLE CEILINGS WITHIN THE ACCESSIBLE CEILING SPACE AND SUPPORTED INDEPENDENTLY FROM STRUCTURE. CONDUIT SUPPORTS/PULLBOXES FOR ROOF MOUNTED OR EXTERIOR ABOVE GRADE APPLICATIONS TO BE NEMA 3 RATED. PULLBOXES TO BE SIZED ACCORDING TO THE FOLLOWING:

CONDUIT SIZE	WIDTH	LENGTH	DEPTH	WIDTH INCREASE PER ADDITIONAL CONDUIT
1"	4"	16"	3"	2"
2"	8"	36"	4"	5"
3"	12"	48"	5"	6"
4"	15"	60"	8"	8"

FOR OTHER CONDUIT SIZES REFER TO ANSITIA 569C (LATEST PUBLISHED EDITION).

 18. CONDUITS TO EXIT PULLBOX ON THE WALL OPPOSITE THE WALL ENTERED.
 19. PROVIDE LABELLING OF EACH CONDUIT PER GENERAL ELECTRICAL SPECIFICATIONS.
 20. COORDINATE MOUNTING DIMENSIONS FOR ELECTRICAL DEVICES AND SWITCHES WITH ARCHITECTURAL INTERIOR ELEVATIONS PRIOR TO ROUGH-IN.
 21. COORDINATE PENETRATIONS WITH STRUCTURAL PLANS AND DETAILS.
 22. ATTACH CEILING MOUNTED DEVICES TO FINISHED CEILING. REFER TO REFLECTIVE CEILING PLAN FOR HEIGHT. U.O.N.

CONDUIT SIZE	WIDTH	LENGTH	DEPTH	WIDTH INCREASE PER ADDITIONAL CONDUIT
1"	4"	16"	3"	2"
2"	8"	36"	4"	5"
3"	12"	48"	5"	6"
4"	15"	60"	8"	8"

FOR OTHER CONDUIT SIZES REFER TO ANSI/TIA 569C (LATEST PUBLISHED EDITION).

18. CONDUITS TO EXIT PULLBOX ON THE WALL OPPOSITE THE WALL ENTERED.
20. PROVIDE LABELING OF EACH CONDUIT PER GENERAL ELECTRICAL SPECIFICATIONS.
21. COORDINATE MOUNTING DIMENSIONS FOR ELECTRICAL DEVICES AND SWITCHES WITH ARCHITECTURAL INTERIOR ELEVATIONS PRIOR TO ROUGH-IN.
22. COORDINATE PENETRATIONS WITH STRUCTURAL PLANS AND DETAILS.
23. ATTACH CEILING MOUNTED DEVICES TO FINISHED CEILING. REFER TO REFLECTIVE CEILING PLAN FOR HEIGHT. U.O.N.

