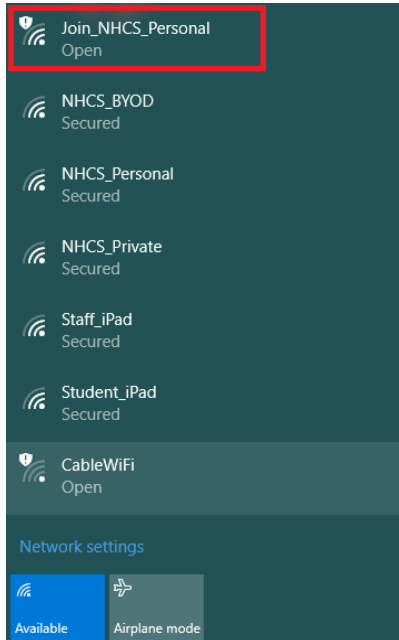
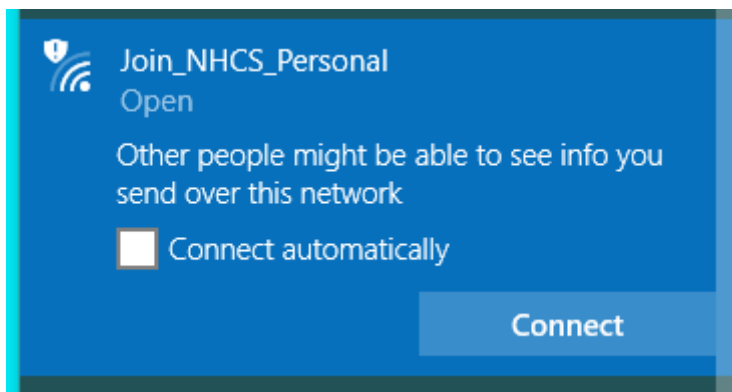


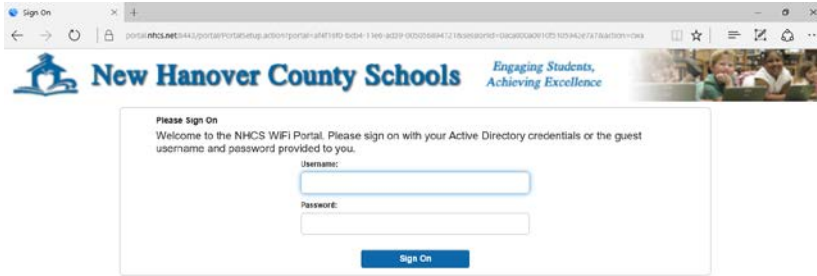
Open your WiFi options by clicking on the icon in the bottom right hand corner and click on Join_NHCS_Personal.



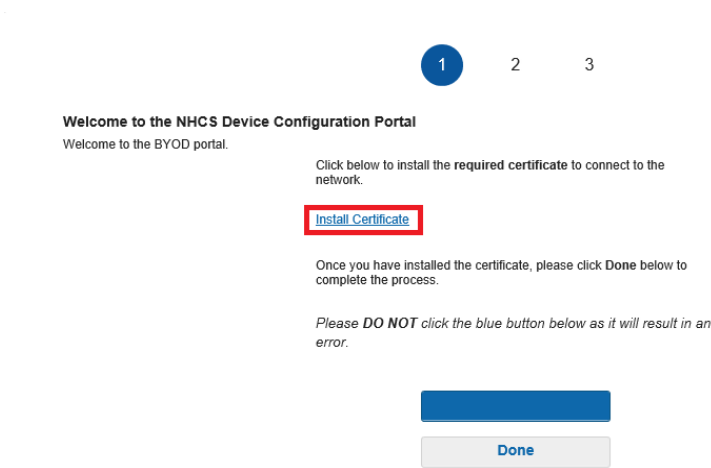
Ensure the connect automatically box is **unchecked** and click connect



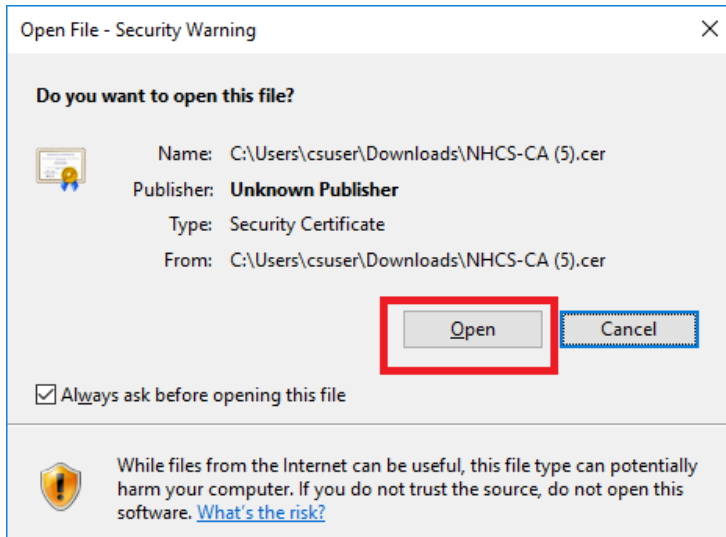
Enter your credentials when prompted in the screen below and click sign on



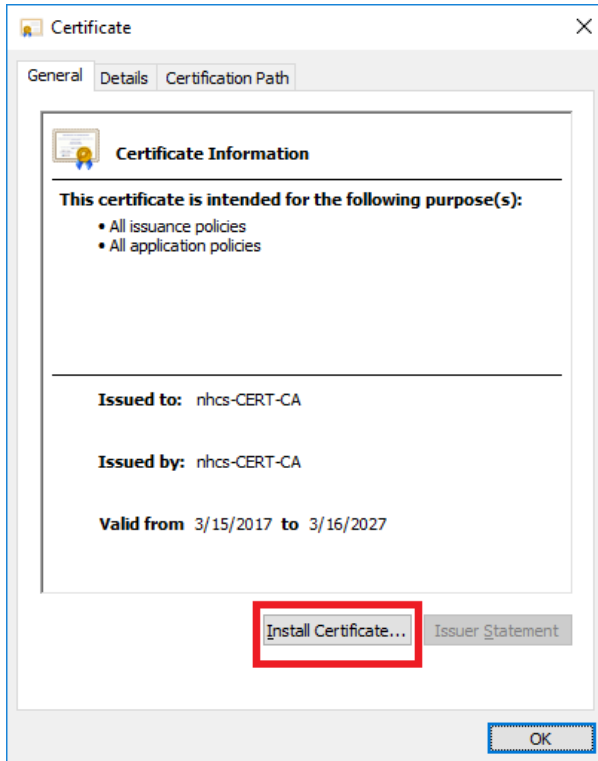
Click on the **install certificate** link.



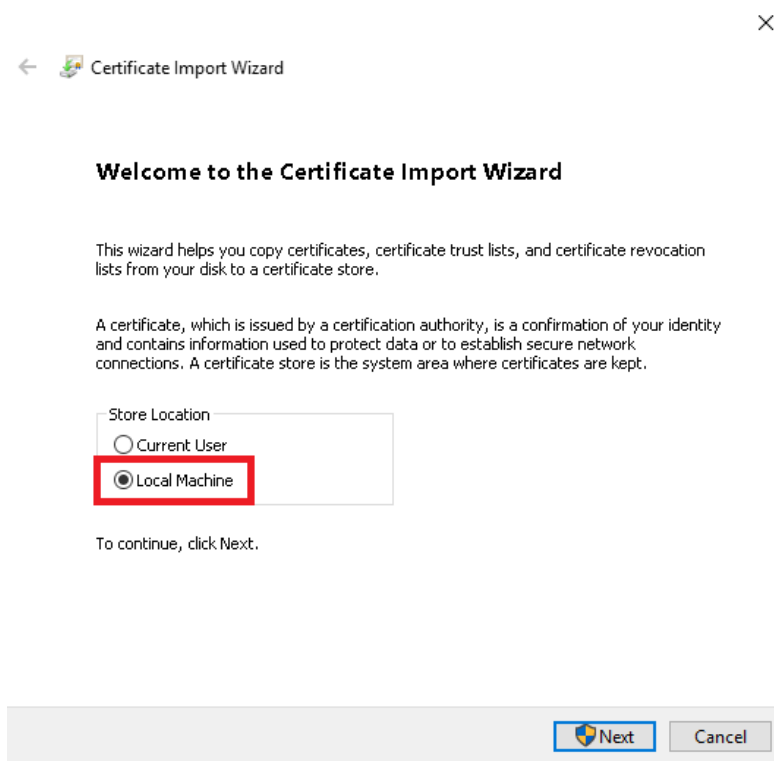
Next open the file and select open as shown highlighted in red.



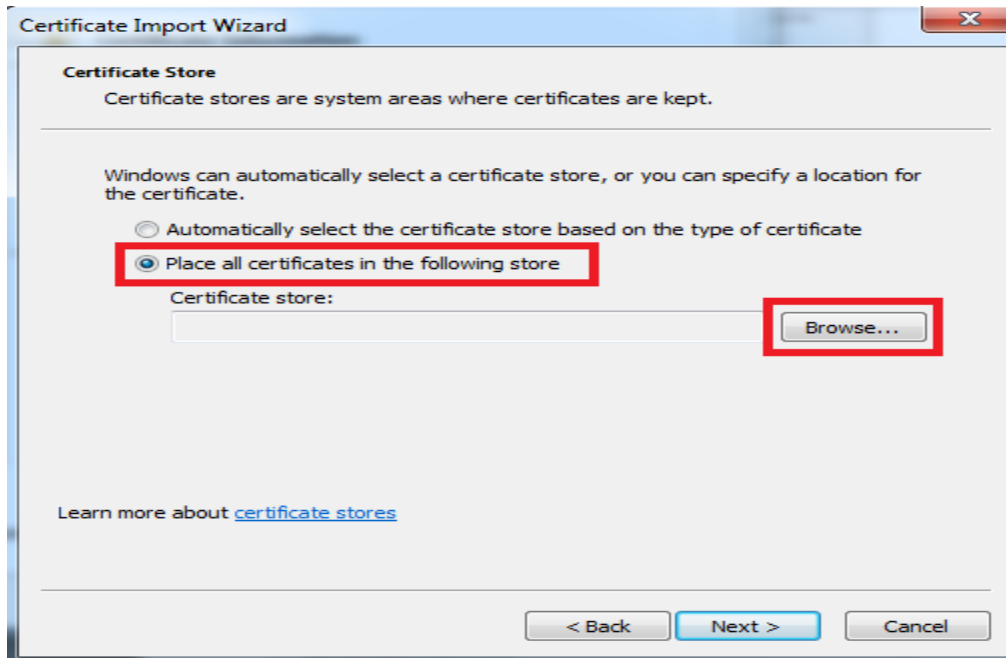
Click on Install Certificate



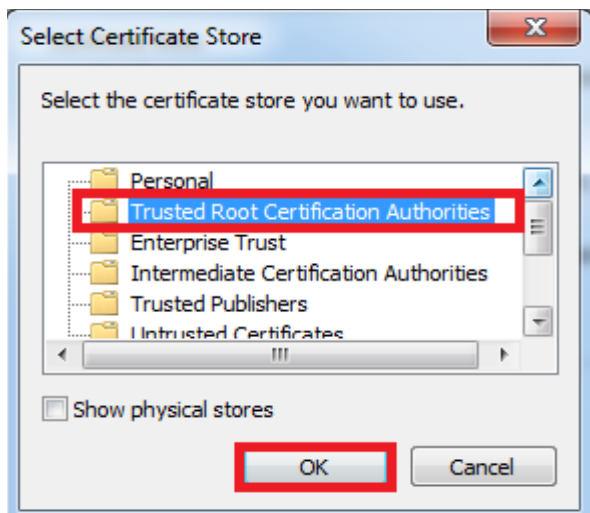
Select Local Machine and select Next



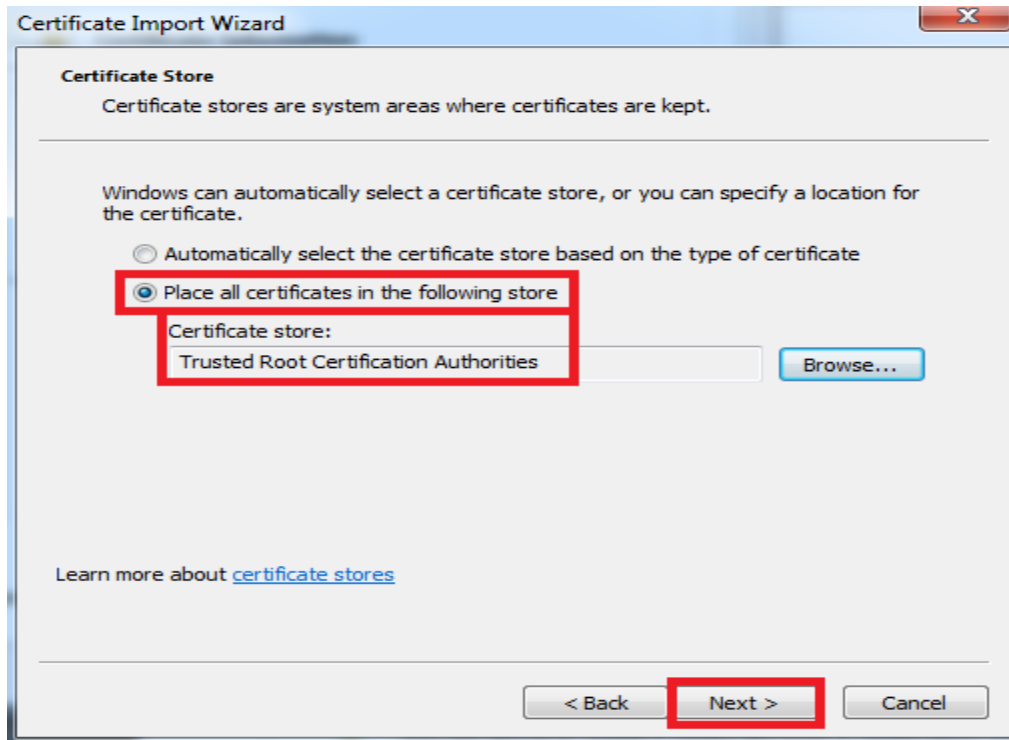
Click the button Place all certificates in the following store, then click browse



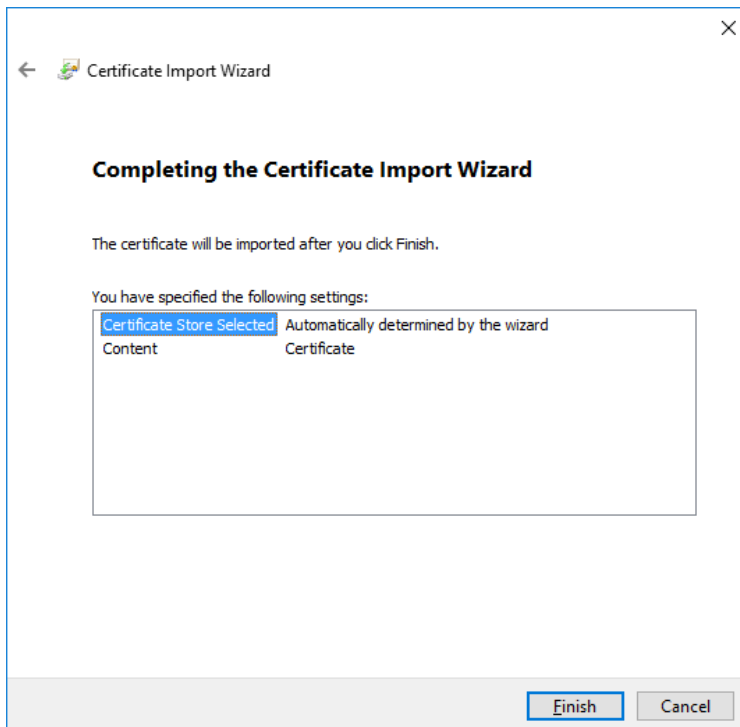
In the Select Certificate Store, click on Trusted Root Certification Authorities then click Ok



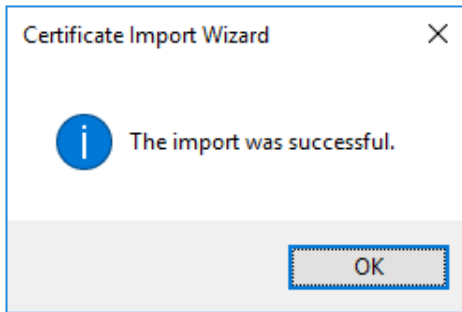
Back at the Certificate Import Wizard screen, Click Next



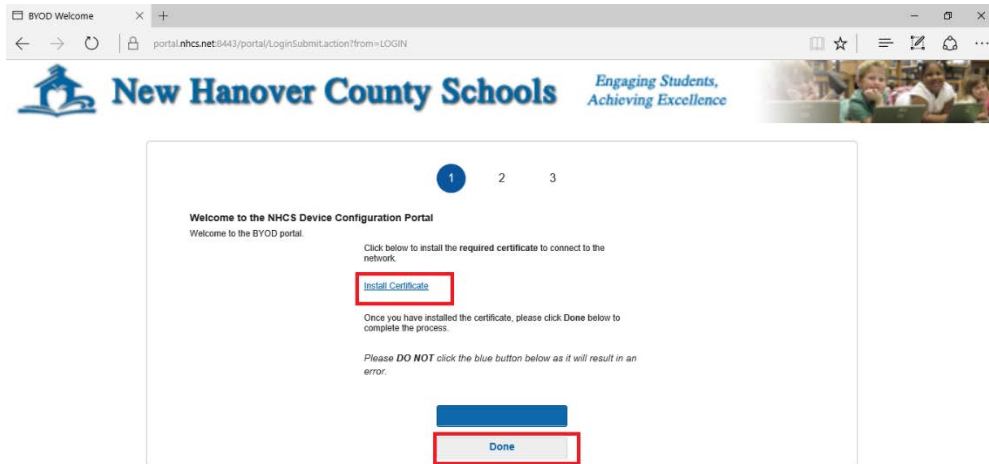
Click Finish as shown below



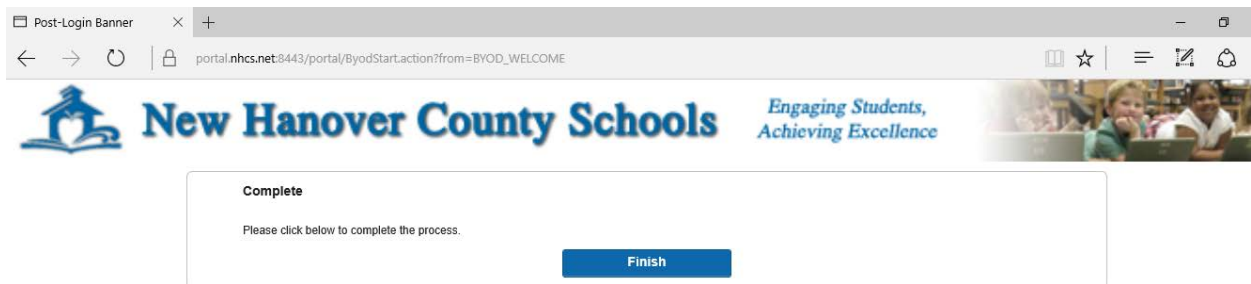
Click OK



Once the certificate has installed select Done as shown below. **DO NOT CLICK THE BLUE BUTTON!**

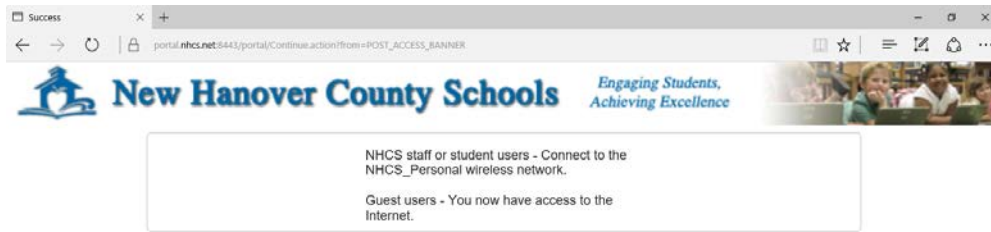


Click Finish

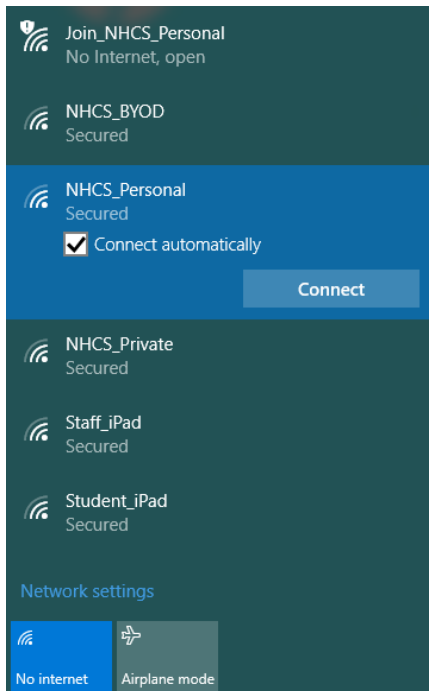


NHCS_PERSONAL WIFI INSTRUCTIONS

Once you have clicked on Finish you will follow as prompted below

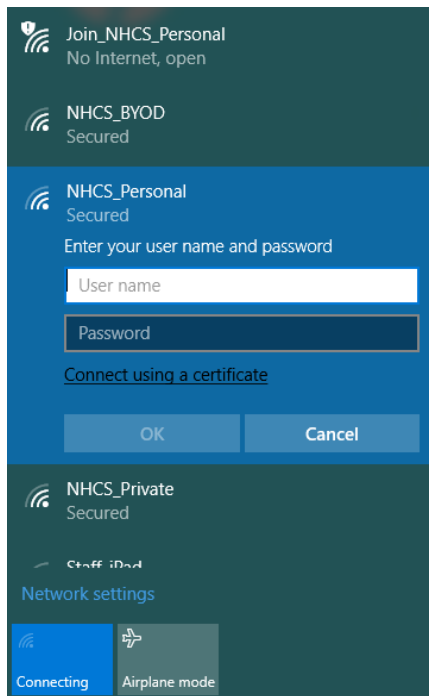


Click on the WiFi connections icon in the bottom right hand corner, select **NHCS_PERSONAL**, check connect automatically and click Connect



NHCS_PERSONAL WIFI INSTRUCTIONS

When prompted as show below enter your active directory credentials (First.Last) once again for the username and select OK.



Finally, when prompted as shown below you will click on connect and you are now connected to the **NHCS_Personal** Wireless Network. To ensure connectivity, please logon to www.nhcs.net or any acceptable website.

