



NEW LEBANON ELEMENTARY SCHOOL BUILDING COMMITTEE

Community Update – February 2019

About the School Building Project

This intra-district elementary International Baccalaureate magnet school will serve students in grades PreK-5. The centrally located learning commons, equipped with flexible furnishings & adaptable technological infrastructure, allows for multiple zones of simultaneous learning. The building is designed to meet the sustainability goals established by the Educational Specifications and to achieve a gold-level LEED rating from US Green Building Council.

- The building is being completed in preparation of the opening for students on February 20, 2019.
 - Final cleaning is ongoing as classrooms and areas as completed.
 - Furniture is being delivered and installed
 - Teacher and staff contents are scheduled to be packed and moved over February break

Work anticipated for the coming weeks:

- Interior finishes to be completed: Progressing from 2nd floor to 1st floor areas
- Remaining Ceiling tiles will be installed
- Corridor flooring is progressing
- Gym equipment and flooring is ongoing
- Smartboards are being installed
- Staff training of equipment and systems has begun

The project has received its 4th reimbursement from the state, \$3,495,815, totaling \$15,738,167 to date.

If you have a concern, please contact the Gilbane Project Manager, Daniel Phillips at (914) 246-4862.

Please join us to hear more about New Lebanon School and see the new building:

NLS Community Open House and Tour – February 23, 10:00am – 12:00pm

NLS Magnet Program Open House and Tour – February 23, 1:00pm - 3:00pm

Media Center Glass – 1/29/19



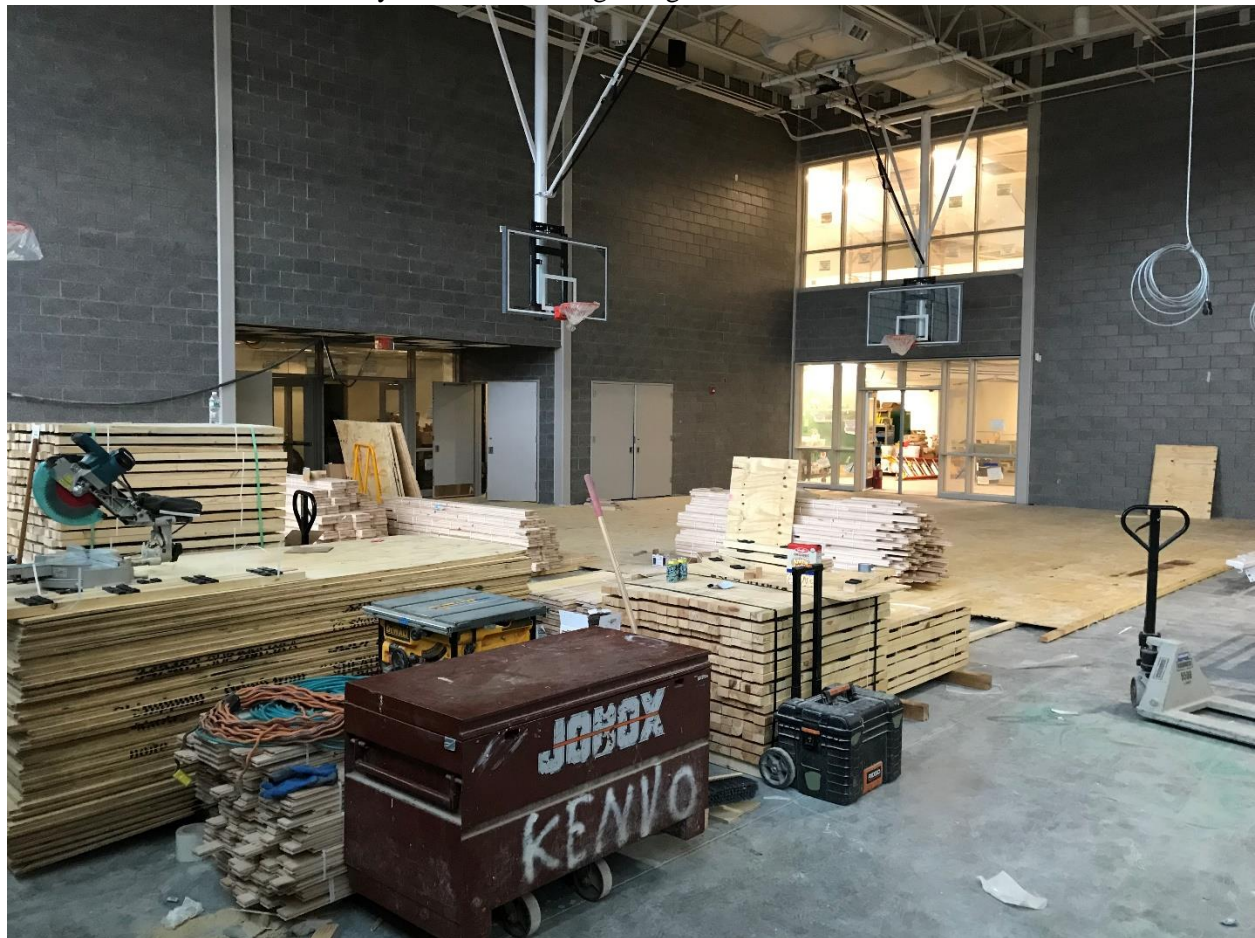
Kitchen Servery – 1/29/19



Cafeteria Flooring layout and installation – 1/29/19



Gymnasium Flooring being installed – 1/29/19



Classroom Furniture to be Distributed – 1/29/19



Classroom Furniture to be Distributed – 1/29/19



Pre-K Classroom – 1/29/19



Kindergarten Classroom – 1/29/19



Main Office Reception - 1/28/19



Visit our website: www.greenwickschools.org/NLSBC