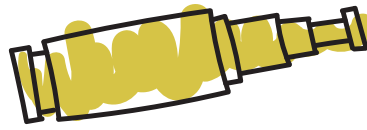


FIND YOUR



Adventure

ST. FRANCIS EPISCOPAL SCHOOL

SUMMER ON THE POINT 2019



AT A GLANCE

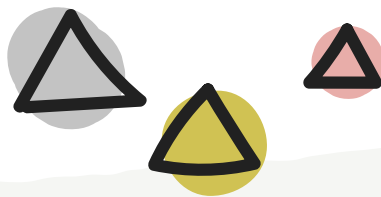
JUNE 3-28 / JULY 8-AUG 2

FOR COURSE DESCRIPTIONS AND REGISTRATION, VISIT
WWW.STFRANCISHOUSTON.ORG/SUMMER-CAMPS

ST. FRANCIS IS PROUD TO PRESENT SUMMER ON THE POINT 2019

For 25 years, children have been investigating, discovering, and delighting in St. Francis Episcopal School's Summer on the Point camps. This year, we're thrilled to present another amazing lineup. Within these pages, you'll find information about innovative new courses and returning favorites—all of which use hands-on, real-world exploration to help students discover new horizons brimming with curiosity and excitement.

Offering morning, afternoon, and full-day camps for eight weeks in June, July, and early August, Summer on the Point welcomes students ages three and up.



JOIN US FOR A SUMMER OF FUN AND ADVENTURE!



REGISTRATION

Children should be registered based on the grade they are entering in the 2019–20 school year. Please complete a separate registration for each student. Registration is on a first-come, first-served basis and is available online at www.StFrancisHouston.org/summer-camps. All pending registrations will be reviewed by the St. Francis Business Office, and will only be considered complete when payment is received by credit card or e-check and all the family's student accounts at St. Francis are current. Registration for students with outstanding account balances will be considered pending. All courses must meet minimum enrollment figures, and St. Francis reserves the right to cancel programs that are underenrolled.

Registration for all Dan L. Duncan Clinic Reading and Math Camps must be received by May 27, 2019. Classes fill quickly, so we encourage you to register early.

CONFIRMATION

When you register successfully, you will receive an automatic e-mail reply. Your registration is not complete until you receive this e-mail. **This automatic reply contains no camp details and is only an acknowledgement that we have received your registration.** Follow-up e-mails with camp-specific information are sent approximately seven to ten days prior to the start of individual sessions.

REFUND POLICY

Tuition will only be refunded through a written request submitted to Margaret Newsom, director of Explore and Extend. A 10 percent cancellation fee will be retained. After May 31, 2019, for June courses and after July 4, 2019, for July courses, no refund of fees will be made to any student who withdraws or is dismissed from a course or section. St. Francis reserves the right to dismiss any child who does not comply with the expectations of the program. Fees will be refunded in full if St. Francis cancels a course offering.

NONDISCRIMINATION POLICY

St. Francis Episcopal School admits qualified students of any race, color, nationality, or ethnic origin to all the rights, privileges, programs, and activities generally accorded or made available to students at the school. It does not discriminate on the basis of race, color, nationality, or ethnic origin in the administration of its educational policies, admissions policies, scholarships, or athletics or other school-administered programs. St. Francis is an equal opportunity employer.

EXTENDED CARE

Extended care, both before and after camps, is available beginning at 7:30 a.m. and ending at 5:30 p.m. during the weeks that summer programs are offered. To register, please contact the Explore and Extend Office at 713.458.6467 or MNewsom@StFrancisHouston.org. The fee for extended care is \$40 per day or \$150 per week.

AT A GLANCE SUMMER ON THE POINT 2019

JUNE 3–7		PI	PII	K	1 st	2 nd	3 rd	4 th	5 th	6 th	7 th	8 th	9 th	10 th
3-D Design and Prototypes	9-12(2 week)								•	•	•	•	•	
A to Z Woodworking Level I, Session II	1-2:30			•	•	•								
A to Z Woodworking Level I, Session I	10:30-12			•	•	•								
Baseball Identification	8:30-10			•	•	•								
Baseball Identification	10:30-12:15						•	•	•					
Baseball Identification	1-3								•	•	•	•		
Basketball (M-Th only)	9-12			•	•	•	•	•						
Charcoal Drawing	9-12					•	•	•	•	•				
DIY Engineering Camp	1-4				•	•	•							
A Fairy Fantasy Ballet	1-3			•	•	•	•							
Fairytales Happily Ever After Challenge	9-12			•	•	•	•							
Fashionistas & Designing Divas	9-12				•	•	•							
Fundamentals of Kickboxing	1-4					•	•	•	•					
Let's Pretend! Creative Drama	1-2:30			•	•	•	•							
Mini Stars Soccer	1-3	•	•											
Mystery Camp	2:30-4			•	•	•	•							
Outdoor Survival Challenge	1-2:30			•	•	•	•							
Pencil Drawing	1-4								•	•	•	•	•	
Reading Camps	9-12			•	•	•	•	•						
Reading Intensives	9-11/ 1-3			•	•	•	•	•	•					
Sleeping Under the Stars	9-12/9-3	•	•											
Speaking for Success	10-11:30								•	•	•	•	•	
Tech Spectacular	1-4								•	•	•			
Volleyball (Gr 2-5)	8:30-10					•	•	•	•					
Volleyball (Gr 6-10)	10:30-12:30								•	•	•	•	•	•
JUNE 10–14		PI	PII	K	1 st	2 nd	3 rd	4 th	5 th	6 th	7 th	8 th	9 th	10 th
3-D Design and Prototypes	9-12(2 week)								•	•	•	•	•	
7 on 7 Football	10-12							•	•	•	•	•	•	•
A to Z Woodworking Level II, Session I	10:30-12			•	•	•	•	•						
A to Z Woodworking Level II, Session II	1-2:30			•	•	•	•	•						
Acrylics 1: Pets and More	1-4					•	•	•	•					
Acrylics I: Painting Basics	9-12					•	•	•	•					
Board Game Camp	1-4			•	•	•	•	•	•	•	•	•		
Field Hockey	10-12								•	•	•	•	•	
Going on a Safari	9-12/9-3	•	•											
Gymnastics for PS	1-3	•	•											
Lego Robotics	1-3:30(M-Th)					•	•	•	•					
Let's Pretend! Creative Drama	1-2:30			•	•	•	•							
Multi Sport	9-12			•	•	•	•	•						
Multi Media Art	9-12/9-3								•	•	•	•	•	•
Photography I	9-12								•	•	•	•	•	•
Pre Ballet	9-10:30		•											
Reading Camps	9-12			•	•	•	•	•						
Reading Intensives	9-11/1-3			•	•	•	•	•	•					
Speaking for Success	10-11:30								•	•	•	•	•	
Speed and Agility Camp	8-9:30							•	•	•	•	•	•	•
Variety Dance Camp	1-4			•	•	•	•	•						
Wolf Ninja Warriors	1-4					•	•	•	•	•				

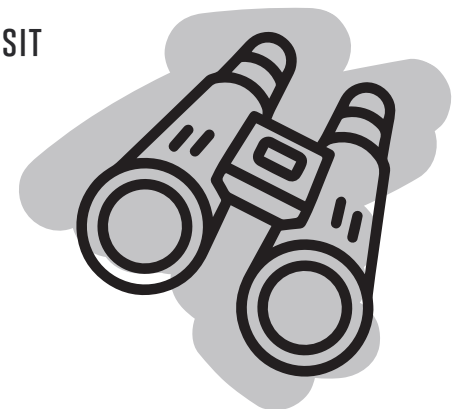
AT A GLANCE SUMMER ON THE POINT 2019

JUNE 17–21		PI	PII	K	1 st	2 nd	3 rd	4 th	5 th	6 th	7 th	8 th	9 th	10 th
7 on 7 Football	10–12							•	•	•	•	•	•	•
A to Z Woodworking Advanced	1–2:30					•	•	•	•					
A to Z Woodworking Advanced	10:30–12					•	•	•	•					
Basketball	9–12			•	•	•	•	•						
Critical Thinking Bootcamp (PII)	1–3		•											
Decades and Dolls	9–12			•	•	•	•							
Degas’s Ballerinas	1–4						•	•	•	•				
Dodgeball Challenge	1–4				•	•	•	•	•					
Express and Explore Art	9–12			•	•	•	•							
Fashion Trends and Sewing Skills	9–12						•	•	•	•				
Hip Hop and Classical Jazz	12–1:30			•	•									
Howlers’ Cheer Camp	1–4				•	•	•	•	•					
In the Pet Shop	9–12/9–3	•	•											
Lego Creations Design Camp	1–4			•	•	•								
Let’s Pretend! Creative Drama	1–2:30			•	•	•	•							
Movement Exploration	1–3	•	•											
Reading Camps	9–12			•	•	•	•	•						
Reading Intensives	9–11/1–3			•	•	•	•	•	•					
Soccer Around the World	10–12						•	•	•	•	•	•	•	•
Speaking for Success	10–11:30								•	•	•	•	•	
Speed and Agility Camp	8–9:30							•	•	•	•	•	•	•
JUNE 24–28		PI	PII	K	1 st	2 nd	3 rd	4 th	5 th	6 th	7 th	8 th	9 th	10 th
All About the Arts	9–12	•	•											
Basketball Shooting and Passing	10–12								•	•	•	•	•	•
Grappling Games	1–3					•	•	•	•	•	•			
Indoor Field Hockey	1–4			•	•	•	•	•						
Kitchen Chemistry	9–12				•	•	•	•						
Let’s Pretend! Creative Drama	1–2:30			•	•	•	•							
Mini-Stars All Sport	9–12	•	•											
Mis Amigos (PII Only)	9–12/9–3		•											
Multi Sport Camp	9–12			•	•	•	•	•						
Reading Camp	9–12			•	•	•	•	•						
Reading Intensives	9–11/1–3			•	•	•	•	•	•					
Self Portraits: Charcoal & Pencil	1–4							•	•	•	•	•	•	•
Self Portraits: Acrylics	9–12			•	•	•	•							
Speaking for Success	10–11:30								•	•	•	•	•	
Speed and Agility Camp	8–9:30							•	•	•	•	•	•	•
Survival 101	9–12								•	•	•	•	•	•
Tae Kwon Do Fun PS	9–12	•	•											
Video Design: Modding & Networking	9–12						•	•	•	•	•	•	•	•
Video Design: Kodu	1–4						•	•	•	•	•	•	•	•
USA Chess	9–12/1–4			•	•	•	•	•	•	•	•	•	•	•

AT A GLANCE SUMMER ON THE POINT 2019

JULY 8–12	PI	PII	K	1 st	2 nd	3 rd	4 th	5 th	6 th	7 th	8 th	9 th	10 th
Board Game Camp 1–4			•	•	•	•	•	•	•	•	•		
Critical Thinking Boot Camp 9–12			•	•	•								
Fashion Design: Figure & Clothes 9–12								•	•	•	•	•	
Lemonade Stand Entrepreneur 1–4						•	•	•					
Mixed Media Art 1–4							•	•	•	•	•	•	
SportStravaganza 9–12			•	•	•	•	•						
USA Chess 9–12/1–4			•	•	•	•	•	•	•	•	•		
Video Design: Arcade 9–12						•	•	•	•	•	•	•	•
Video Design: Modding & Networking 1–4						•	•	•	•	•	•	•	•
JULY 15–19	PI	PII	K	1 st	2 nd	3 rd	4 th	5 th	6 th	7 th	8 th	9 th	10 th
Charcoal Drawings 9–12						•	•	•	•				
Coding Trailblazers 1–2:30			•	•	•	•							
Foundations of Algebra 9–12											•	•	
Hands-on Math for Grades 5&6 9–11								•	•				
Indoor Soccer 9–12			•	•	•	•							
Lego Design Camp 9–12			•	•	•	•							
Math Fact Review 9–12						•	•	•					
Mis Amigos 9–12/9–3	•	•											
Movement Exploration Workshop 1–4			•	•	•								
Movement Exploration Workshop 9–11	•	•											
Rev Up for Reading 9–12			•	•	•								
Fundamentals of Kickboxing 1–4					•	•	•	•	•				
Whizz! Bang! Splat! 2:30–4			•	•	•	•	•						
Wolf Ninja Warriors 1–4						•	•	•	•				
JULY 22–26	PI	PII	K	1 st	2 nd	3 rd	4 th	5 th	6 th	7 th	8 th	9 th	10 th
Gymnastics for PS 1–3	•	•											
Jump Into Lower School 9–12			•	•	•	•	•						
Jump Into Math for Rising 5th 9–10:30								•					
Jump Into Math for Rising 6th 10:30–12									•				
Jump Into MS Spanish 10:30–12								•	•	•			
Jump Into MS Writing 1 10:30–12								•	•				
Jump Into MS Writing 2 9:00–10:30										•	•		
Jump Into Primary School 9–12	•	•											
Jump Into Technology: Keyboarding 9–10:30								•	•	•	•		
Speed and Agility Camp 8–9:30							•	•	•	•	•	•	•
Tae Kwon Do Fun Camp 1–4			•	•	•	•	•	•					

FOR COURSE DESCRIPTIONS AND REGISTRATION, VISIT
www.StFrancisHouston.org/summer-camps



AT A GLANCE SUMMER ON THE POINT 2019

JULY 29–AUGUST 2		PI	PII	K	1 st	2 nd	3 rd	4 th	5 th	6 th	7 th	8 th	9 th	10 th
7 on 7 Football	10-12							•	•	•	•	•	•	•
Dodgeball Challenge	1-4				•	•	•	•	•					
Foundations of Algebra	9-12											•	•	
Tumbling Ninjas	1-4			•	•	•	•	•						
Jump Into Lower School	9-12			•	•	•	•	•						
Jump Into Math for Rising 5th	10:30-12								•					
Jump Into Math for Rising 6th	9-10:30									•				
Jump Into MS Spanish	10:30-12								•	•	•			
Jump Into MS Writing 1	9-10:30								•	•				
Jump Into MS Writing 2	10:30-12										•	•		
Jump Into Pre-Algebra	9-10:30													
Jump Into Primary School	9-12	•	•											
Jump Into Technology: Keyboarding	10:30-12								•	•	•	•		
Mini-Stars All Sport	1-3	•	•											
Practical Self-Defense	1-3										•	•	•	•
Spanish I Review	9-12											•	•	
Tae Kwon Do Fun Camp	9-12	•	•											
Volleyball (Gr 2-5)	8:30-10					•	•	•	•					
Volleyball (Gr 6-10)	10:30-12:30									•	•	•	•	•
USA Chess	1-4			•	•	•	•	•	•	•	•	•	•	•
Video Design: Modding & Networking	1-4						•	•	•	•	•	•	•	•

